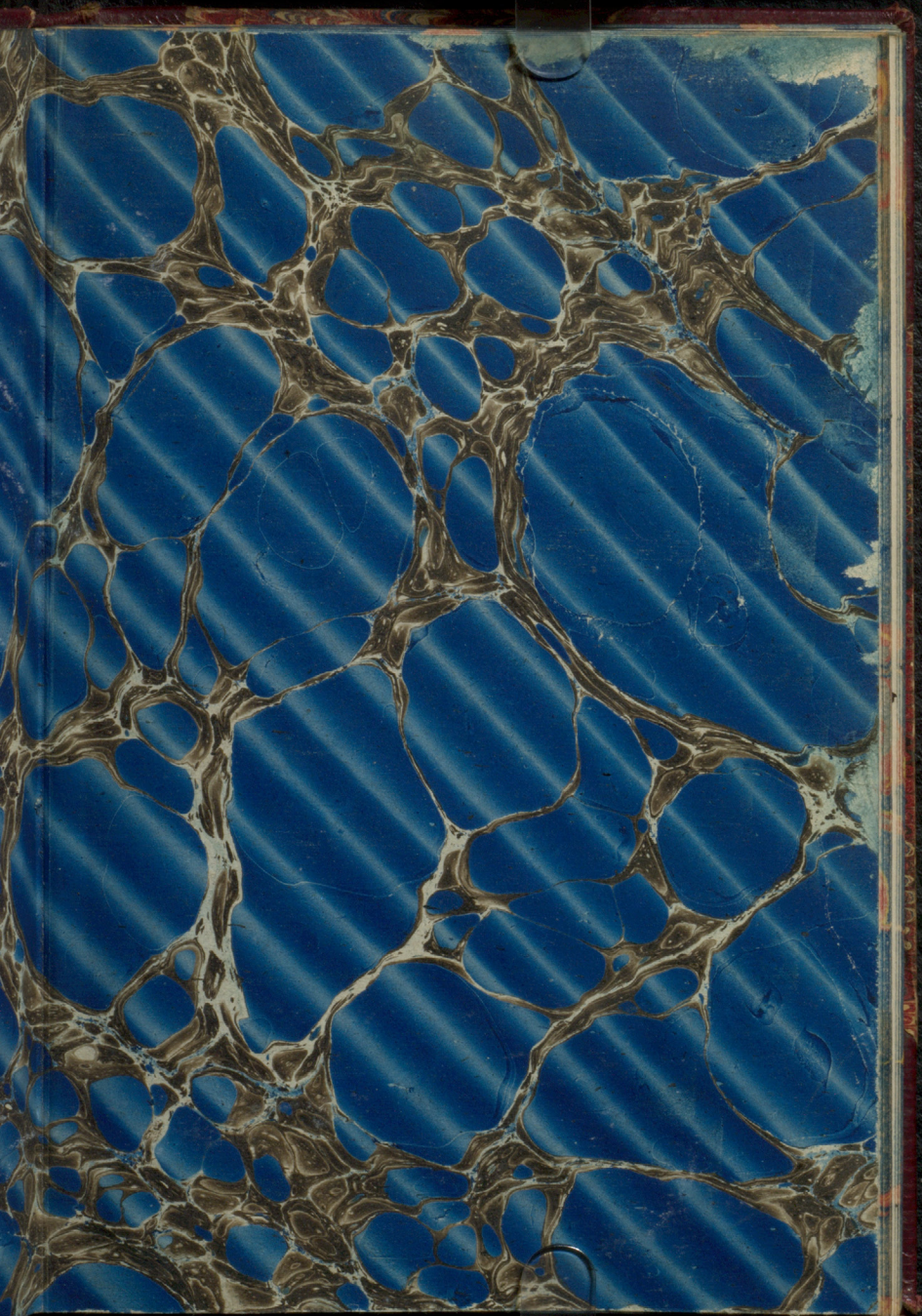


JOHN G. KING, 26 & 46 GOSWELL STREET LONDON, E.C.

BOOKSELLER,
BOOKBINDER,
STATIONER, ENGRAVER & PRINTER,
MANUFACTURER of ACCOUNT BOOKS,
POCKET BOOKS, CARD CASES & PURSELS,
BINDING FOR THE TRADE.



Prof. Bell.

1 Belmont Street.

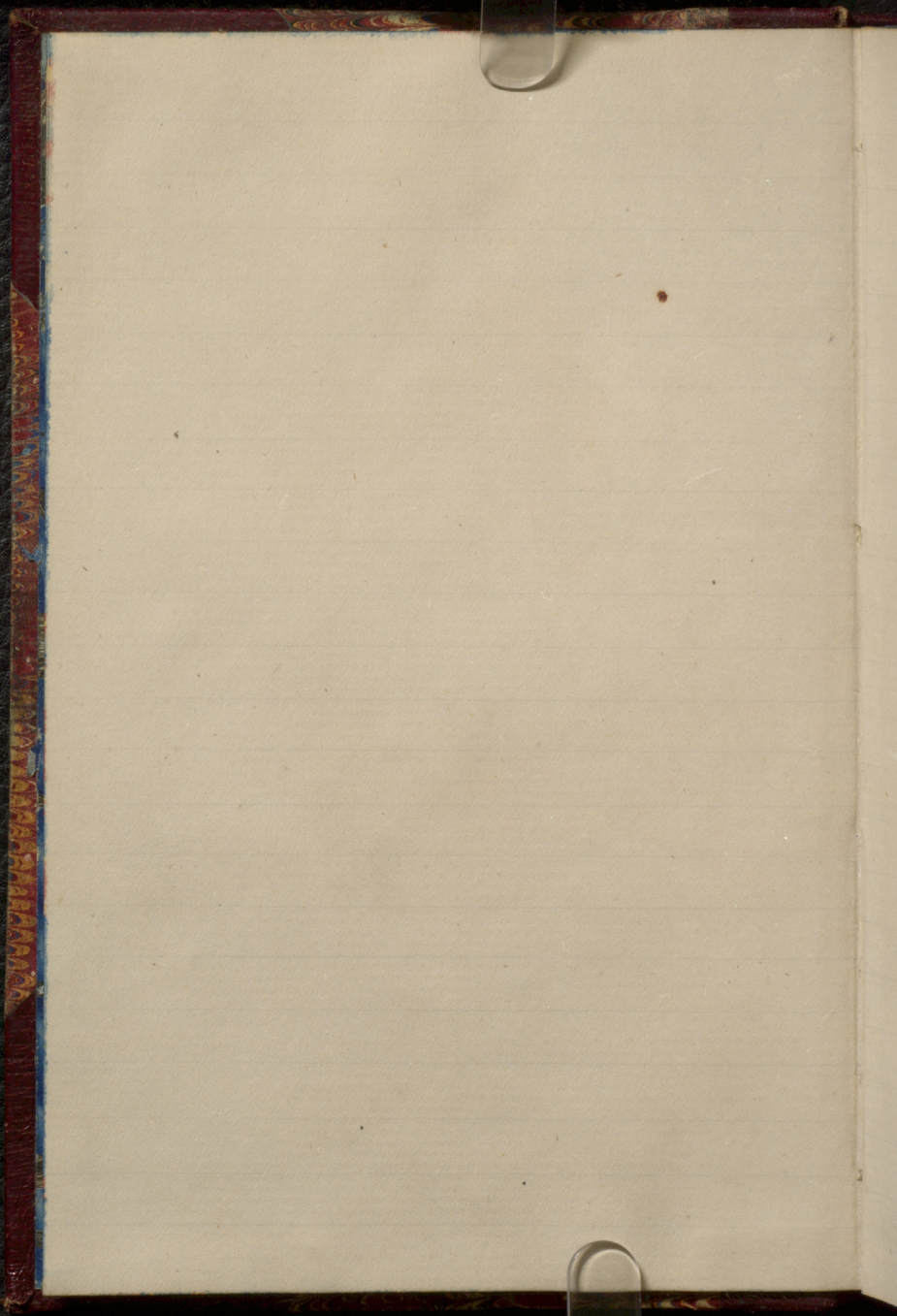
Montreal.

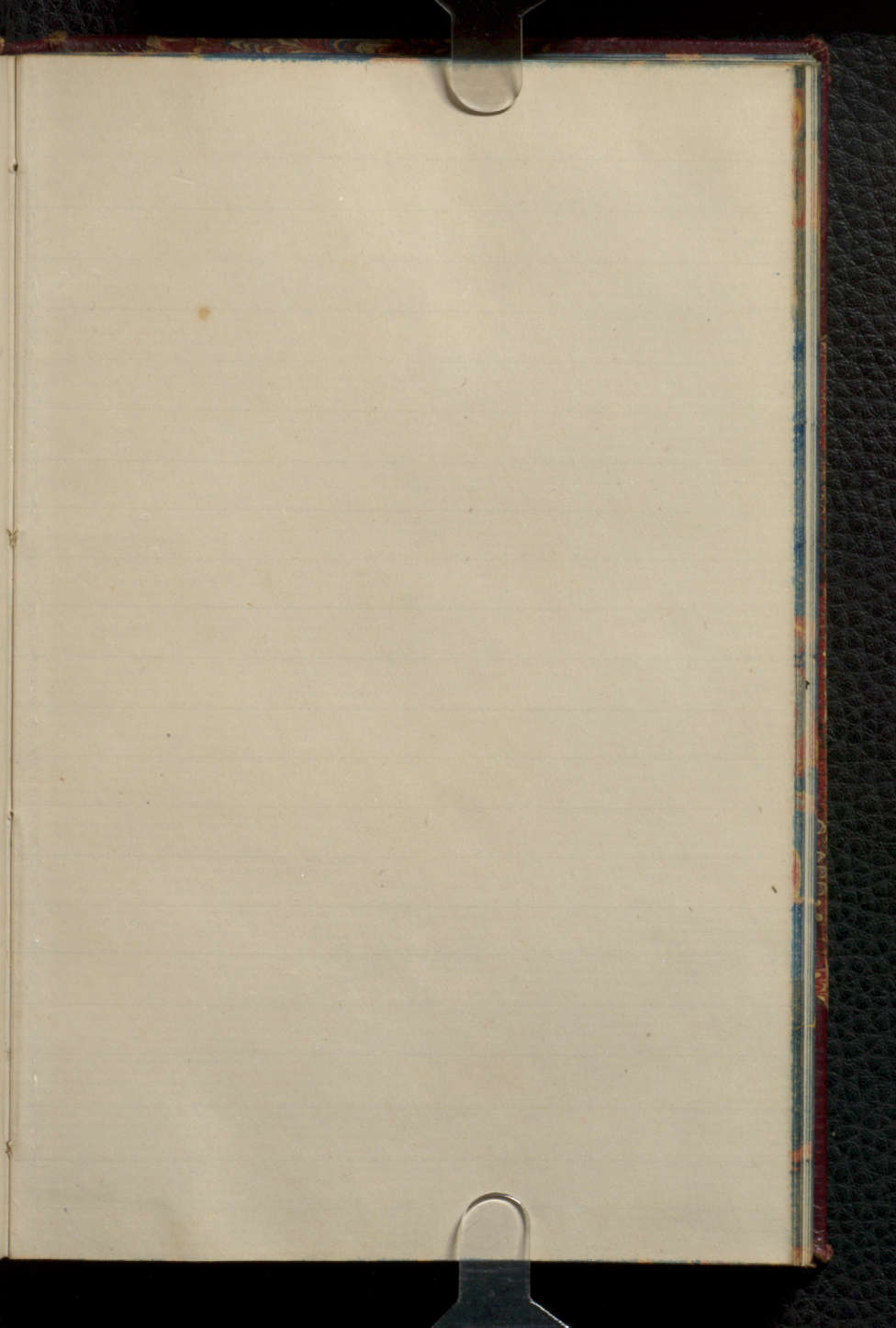
Materia Medica

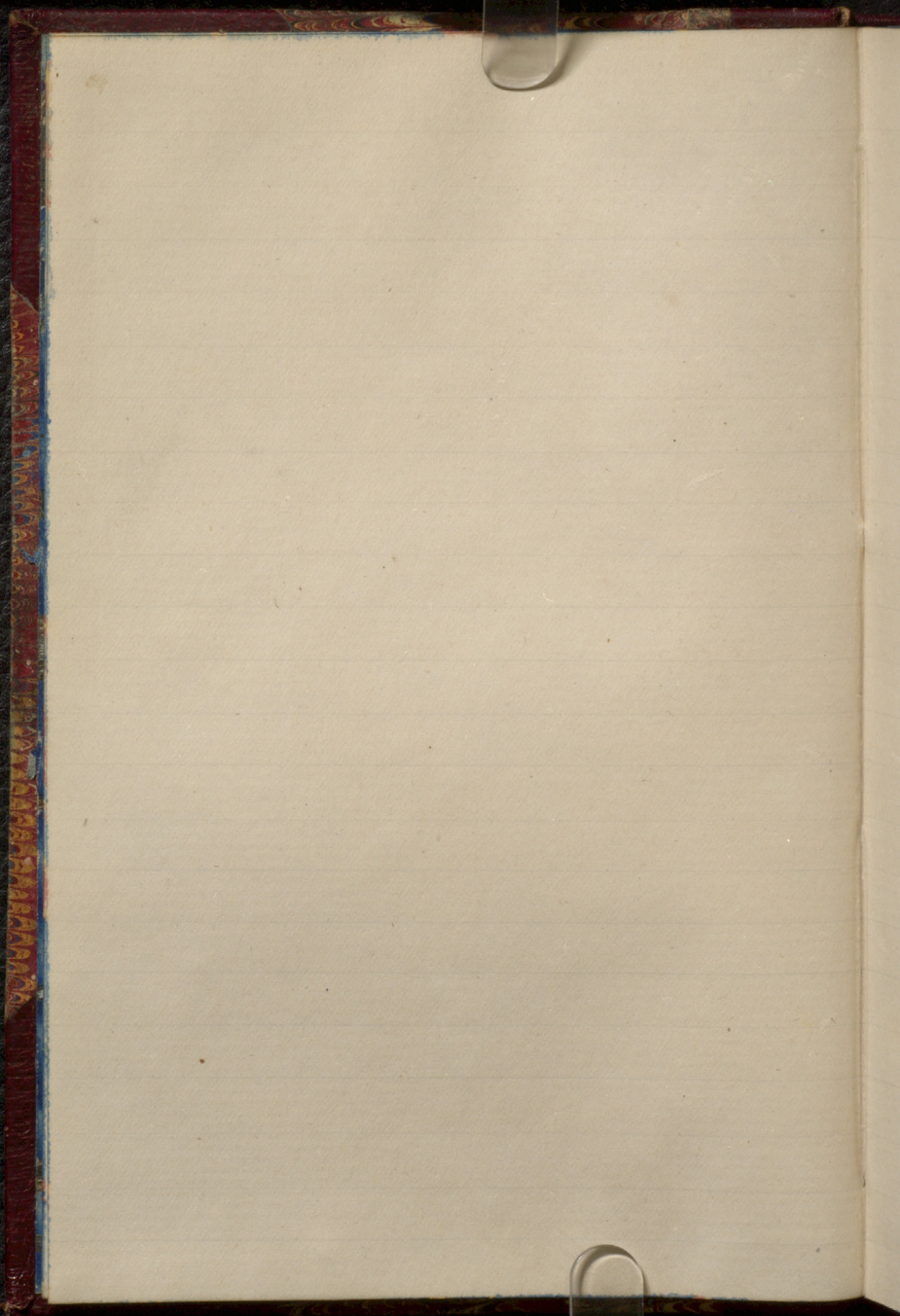
Mc Gill College.

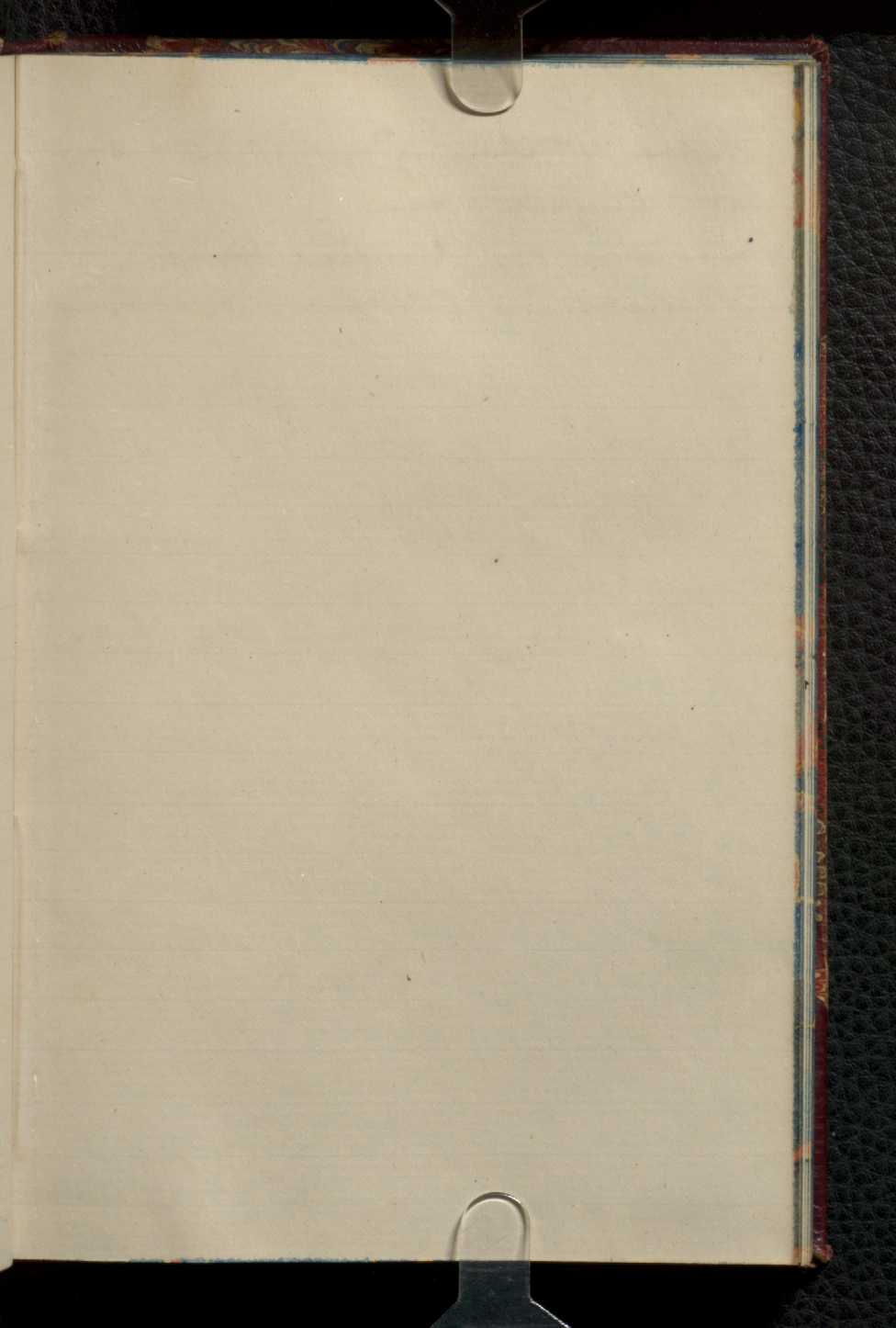
Dr. Wm Wright.

Book - II. Jan^y 1876.









Before 13th - January '76 - about 2 days
at Kingston on

Lectures on: Indian Hemp.

Belladonna & Atropia - Hyoscyamus.

Thursday, January 13th 1846.

In hyaemia there is also
hyosciamia. Wh. if taken intally
promotes comfort & quiescence
Not so certain to produce sleep
as Op. yet gives same effects
sleep - dilates pupil - No
marked effect in retarding the
secretions - as a mild opium.
Like action of camphor.

Hyoscinum in large doses
produces nausea - prostration &c.
Along with Op. instead of contract
it dilates pupils - no check
of sense no dryness of eye &c.
Not so active on children as Op.
10 grs. just by. = 1 gr. Op. When it
promotes sleep - gives rise to
delirium - phantoms in eye -
enlarged pupil & arteries - sleep
morose. Pupil appears red.

Lulium in camp forig
same as in belladonna.

Uses allay pain. neuralgia.
er. erisipelas. Rheumatism.
For head aches. D. J. is 3 tracts
by. Let pt. have dose at 8 p.m.
if no sleep give a 2^d.
For sun stroke = Full dose = 1
Dose. if face swollen &
For headaches. For throat.
cough at bed time. stops cough.
Latter period of dysuria. &
for hiccups. For abdominal
pains a colic. For counteracting
poisonation -

Preparations

Extract - from fresh leaves
of strong pressure - w. pure
& pills made - add - if free
extract - for 100 lbs = 4 or 5
lbs. of the product. dose 5-
to 10 grs.

116
Linctus - purp. pap. v. ita. 40
5-6 of leaves
Pills collyria & lynam (cup)
Combustion on purple that dries
r.

Stramonium:

Datura Stramonium (meaning
of the 2 words - Datura =

Stramonium = overthrowing & rending
inward)

Sapp'd to be indigenous - from 4
ft. high. ^{Simple} flowers
apple" - 4 cavities hairy with
spine outside.

When dry by an brown core much
of taste, smell &c.

Datura = the alkaloid - resembles
atropia - is named in its action.

Looks like straw but wooden.

Pyrodatura by destructive
distillation - very ac.

Actonis. Mild influence on nervous
system especially in carditis.

It increases the secretions.

In large doses produces
dysuria of uric acid. Nausea -
green color to stools -
piddies - sleep.

In poisoning, first indication =
effusion urine - actum &
suppression - the the opp^o =
incontinence - Convulsions -
pains in epigastrium -
18 grs. of extract destroy life.
No harm from fishes being
eaten.

Uses. For actum - smokit.
in pipe as so much water
1 scruple to 1/2 dr. suffi, have
before going to bed. No use in
actum due to heart disease
or in emphysema, only in
pneumonia. By loss
eff^o & ^{now} blood renders it
more efficacious. For bronch

caloria. Le manus affl. conea-
cold bath & Stramonium. For
issuing in full dose at bed
time. Full dose.

Preparations

~~Extract~~
~~Stramonium~~ cup. Dose 5 to 12 grs.
Dose 1/4 to 1/2 dram. 20 powder.
Tincture as strong if powdered said
as leaves.

Tincture for seeds & proof spirit.
Dose for 5 to 15 ans 3 times a day.
Mugwort Stramonium now
collected by 1/2 lb. leaves & 1 lb. card
bottle with 10 min. & with
& strong. cooling remedy.

Anesthetics =

Neurotic wh. act on nerve of
sensitivity. May not lose cream
or sensitivity. but working on
loss of sensibility
N.O. S₂ ether & Chloroform
Oths not sufft. nerves,

100: Nitrous acid or portion of
N. from Nit. acid. & placed
in glass vessel & heated - for
coll. in receiver. Care to
keep heat low enough not
to fracture. but if too low
the products.

Take about 5 in. in drain.
& in tin-lined box - with
a door - & then uniform temp.

Water forms & remain in
recept & as steam with the
gas - collect over hot water.

Char. of gas $\text{O}_2 = 1.527$.

For med. purposes. should be
extensive for opt. of put. as
Cloves are as for chloroform.
Long enough to get for stored &
bought from $\frac{1}{2}$ or $\frac{3}{4}$ of water of brack.
or from a fountain.
Mentholum & end of tubes.

In giving N. include all atropine
air. not so in the other anesthetic.

Mouth pain and be furnished with
valve to exclude what is excluded
in another bag & used again.
Let pt. breathe naturally. You
behave more kind - Eye staring.
If touch eyeball & no vomiting
time for 30th may begin -
So adapted to 30th of short
pains for as extra of teeth -
as can't keep pt. by eye under
for duration - If found by
twisting of fingers. Not safe to
go beyond or curls & eye close.
In such cases as being above.
If air with it. not same at all
but exists as "Laughing gas".
fontaine impulses. Pt. felt all
of it more quickly than with
the amethystis. a few seconds
of deep remembrance ^{the} _{or} ^{and}
with. Headache may follow
or hysteresis. rare. & emotional eyes
safe if air admitted

Drooping is being then weak
false - danger to life - Error
that no case of death -
Action supposed to be due to
stopping supply of oxygen &
supply of blood - extracts all of
it - Parts of brain & nerves
paralytic & succumb.

Sulphuric Ether

SO_2 & red. of part. Distilled water,
Change supply air. Deliquescent
spirit. Spirit. as follows - that
various ether gets as CaCl. takes
any water & put under glass then
no such effect. again that SO_2 does
not yield it. whereas it yields better.
3^d that during course process water
forms over. Process is not
so simple. that a new chem
comp^o - sulphur - rains air =
2 eqs air & 1 of alcohol. & after this
the decomposition takes place. Then eq?
as Ca Cl for exp. and red. part

sulphuric acid. water is abundant.

The Ether is at first impure
or retained of shaking with is an
wt of water = weight ether. The
residue the residue = Sp. G. of spirit
is Phosphorus.

For ether = clear, simple, sp. G. = 0.
735. Slightly less - Refraction &
inflamm - C_2H_6 & H_2O = product of
comb. non. chlorine boils at 96.85°
Free at 76.6° Boils to air. sends
acetic acid & = acetic ether.

Ether is soluble in spirit, suspended
in H_2O of spermaceti volatile.

During exp. acid, odor, but on truffle - 90.

J. Br. P. & S. Mm. crotonch. Cor.
subst. Adulterated by Alch. or H_2O . Determ

clear of albumen. 50 measure of ether
shaken with water and over 5 & 5 mm.

Actions vapor = anesthetic, taken
interiorly - stimulant, but does not
aff. temp. Is a powerful antispasmodic
anodyne - No cases of poisoning.

27. has been taken since
for a long time. In spirit
- 100% of for cause -
~~Subsiding~~ like alcohol.
Increase rotation.

Pulse at first slow & soft
surface rise, vein full of
dark blood. - Increase talk
then sleep.

Minute details and check for.

Friday Jan. 14th 1876.

Much done of op. = 5 gr. = poisons
in most cases. Names of
Powders wh. contain op.
Contraindicated as write up to prevent
action of op. on brain.

With hygiens - 3 medicines =
"dilatants" for effect on pupil =
Op. belladonna & calomel -

After having had full effect of op.
with dose need only a $\frac{1}{3}$ of 1/4
Powder of op. in certain well known
compounds

1 gr. ^{op.} of 25 drops of Laudanum
Compositum tincture of op. = "comp. c. tinct."
Parts of belladonna used. Amer. spirit.

But comes from Germany.

Atropia used to dilate pupil
to operate for cataract. pt. may
get better sight in this disease.
In diabetes in order to break up
any lesion that might form.

Doses powder - 9 in pills for
expectorant - 9 in compound op. pill
20 m. extract = 30 m. tinct. - "black
drop." 303 opium to 2 pint spirit
to make tr. prop. of solvent with
9522 pt. of the gross wt. & trace
remain in the residue.

Atropia may be detected in urine
of pt. in full dose up to 3 hours
after taking it. Good atropia
has no smell but when
partly decomposed has smell.

Dose of tinct. of belladonna = ?
Aetium opii - how made. Mention
Semi solid preparations of opium.
Unguentum - & other compound
made by 3 separate infusions &
coupled all together.

Tinct. of accacia sweetened with liquor
to make lozenges.

When wd. you find belladonna
Its action is on estomach of - uterus
In rheumatic gouty affections also.

In erysipalis, in head affections -
sore throat.

How is atropia got?

"Atropism" = poisoning by atropia -
What are the symptoms - Skin
same as in scarlatina. In very
large doses effect on mind - deterioration
of what kind? Differs between dilata
& belladonna applied locally ^{to one eye} &
internally ~~to both~~. Clearness of vision.
After dilatation pt. becomes "long-
sighted". Remedy for poisoning by
belladonna & atropia = Calabar
bean & Hg. Lintr. of belladonna =
103 leaves to 1 pt. spirit. 1 pint tr.
from 20 g of root & 30 g of alcohol
used. Hyoscyamus niger. Differs
between hyoscyamus and scopolamine. effect
on pupil. on secretions.

Headache, vertigo. Differs in dose.
Datum stramonium - similar to
hyoscyamus & belladonna. In few seeds. Other
separations

Combination of alkalis with
belladonna & atropin. objectionable.
also some objection to the ^{alk.} combination.

Str. for asthma. - seen due to neurosis =
dose of tr. str = Plant ^{fresh} ^{100%} Capsicum
"Hashish". Resin = Purish brown
color. Greyish. 103 5) pint opit.
Water also dissolves it out. Must
give large dose 10 to 20 times more
than in the extract's native cont.

Action of belladonna on system in odr.
Paralysis much set 22 or - nerves, -
gland. ^{Hyocine} Depression of rate of circulation
down to 14 pulsations to minute.
Av. to 50. Compared to op. belladonna
dose of hyocine

Influence of atropin in the oxidizing
processes.

That is an anesthetic? used for the
removal of sensitivity. Administration of
N. S. with air efft = "laying gas". If face
put blue or purple - condition = when eyeballs
fixed in position for operation - Adaptation
Symptoms of danger.

Monday, January 17th 1876.

Sulphuric Ether, review of its
character, &c. Is a good stimulant
& - as well as anesthetic.

As an antispasmodic for
asthma but not used by all Drs.
Produces headache. Dose 20 m
5/2 dr with op. Aid when no
op. disease present. For some
cases. As stim. in dependent
system - from fever &c. where
symptoms call for wine &c.
for colera. For local spasm of alveolar
canal &c. For flatulencies &
for flat of ducts of liver - For
local purposes - can use a
few drops at full in & a few
little cotton-wool in - For
deafness - by dissolv^g wax in ear.
occasionally dropped in. Strangulated
hernia - by producing cold to
contracted tissues.

As an antiparasitic
as a wash
Dose 10 m. 5/4 dr.

Pharmaceut. Preparation.

Dose. Dr.

2^d Sulphur ether of Pumpin
applying = abs. of S. ether &
water ^{shake} & thus you get rid
of the alk. & stratum mucosum
& decantate & distill it.
Ca Cl. Sp. gr. now = 0.420 - best
for anaesthetic.

3^d Sol. = Gum Cotton.
Dye of the cotton must not
exceed 3 units. Press
out bal. of liquid &
1/3 cotton in ether & 2 parts
spirit. & liquid = collodion
Its character. It is a thin
vol. purdus fl. off & leaves
pencil. Apt to crack.

Taken 60 of above
120 parts of Balsam of Peru

of carbon oil & manure etc.

Can use it with degree of
sinking on denudation.

Used for burrs (excluding air)
& roads of suppuration. Useful
for bringing together wet surfaces
of wounds. Bring margins very
nearly together & treat raw
surfaces. That no food is in
out of joints. Strap with rubber
plates & apply the collodion
a sort of gauze, the found.
If wound deep narrow surfaces
on each side. This applⁿ gives
a trapezoidal pellicle that will
see. Turn out of it -
For cutaneous skin diseases - Rashed
sipples or. & scrotum in orchitis
& the hydrocele in young boys.

Chloroform = chlorinated lime

Tea-chande of formal. Substⁿ ^{with} ^{water}
coll. 50% of 5. 23 cc Cl. 9%
Acetate ^{with} ^{water} ^{for} ^{use}

Dissolve Ag_2SO_4 with water &
as with ether, except send
the lower stratum to the

Then shake with bulk of
 P_2O_5 . Fully dried with
 CaCl_2 & CaO . When
food = liquid, clean, taste
agreeable & taste like
ripe fruit (apples). Made of
food quantity in Edinburgh.
Made at home on a scale of
duty. 1.50 = approx. same
as H_2SO_4 . Try it. If it
down bone & if will float
food - it = mix of SO_2 & H_2O .
It will sink in this.

Powerful solvent. D. Br. Calc. tests
on as SO_2 sulphur ether = 1
in 200 parts water. more
in spirit. Sending volatile
Heav & times as much as
air. Approx. = 4.2

Of 100 lbs.

In an atmosphere ⁵ of parts of
Cl. - at 45° F. 30 parts.

In creating a great cold - freeze
with as spray. In Cl. has
been used. In an extra chunk

its exp. = spirits of exp. 5
sun light. = Cl. H. C. H.

Usually Cl. & H'Cl. known
not by mental as on it &

longer with last. acid from
spirit out of it. & add of Ag

or ppt. of pure more.

Let first in blood. John

Homer flock & send to

2 stems up & down of
heat to contents - set. for

spirit lamp at middle of

tube & Cl. & H'Cl. find bubbles

paper soaked in Ag. N. & H.

whopose or I. & H'Cl. & H'Cl.

blue discoloration for pure

of the Cl. & H'Cl.

Many of the fatal cases due
to impure Cl. so used here
which you or not
Alcohol most common
impure adulterated its
sp. gr. Impure odor & taste.
If dropped into ag. divid into
globules wh. fall. If alcohol
the worm at. or opaque &
pink & smaller. Shekhaite
water & does not drink
but if all. drink &
mix with the water.

Chromi acid & pure
Cl. no effect but if alcohol
a franklini form. Or
take 2 gr. of bi. cr. No. 2
to 1/2 & same effect.
Sulfuric ether known
& - Not used it
forms & so on white.
Not so with Methyl

Nov. Disagreeable odor. fl. pts
headache, nausea &c. Known
of S.D. when mixed with cream, turp
& brown - Full same & an
oil dept. sinks. Margarine
for the time used -

Use. As a toxic agent. On
skin - blanches - & repressing
blood - Fall in temp. loss
of sensitivity. Caries out
of tooth clean out & Ch put
in - stops toothache -
Used locally diluted. apply 2
dr. of Ch with 2 & 1/2 oz of
susp. liniment. for breast - for
pyelitis - situate &c. - A
stye on e r dr. Ch & 1/2 oz. oil
oil for cornea or St. Vitus dance
for & has a d. V. for is
anesthetic & injected under skin
same - Swallow seldom - It
absorpt in Ch by nausea &
nausea - or opposite.

It writes of irritat. with
mucosus membrane
not so. For see sections &
moving sections &. For
Cause of stomach - in tumor
stage. The main centre is
an antrum with P. illo
& water - Arterial action
accelerates as acidity does.

Ch. in eye does for pain
of cancer & for sleep - In
one case fatal - 18 hrs. kills
by 5 yrs old in 5 hrs. April
203. It name record of the
incompleting cold paper with
paler some on

Shatation - Paper produces
stages = 4 - 1st - 2nd - 3rd - 4th -
& empty. may eat good
same as after of wine, flushed
face & strongly at exertion &
little loss of common security.
In labor pain with much

66
Cpl. & being fear. Continues with
rotary to about ¹⁵ "the wide awake
period."

2^d Paris illness of the spinal
cervix. taking of a watch = a
hammer. light but firm
Discoloration of face - pt. talks
of pits, wrists, & it up - feature
reminds irrelevant. Arises
of hands is firm on - many
more. Dreams to "dreamy
stage". Plunging - scents. pits -

3^d stage - face pale, eyes fixed
pupils coned & upward - pt.
now insensible - limbs
soft & flaccid. but before this
evening a rigidity. Stiffness of
back may be a forerunner
of death.

~~X~~ To sensation - can cut
can, prick, scrape or. Yet
at first cut some twitch.

4th eye. It's face livid.
Should not be forced to
this. The 3rd is effort.

At times pt. not
continues under effort.

In a few cases incontinence
yet common secondary
retard. Also hysteria &
epilepsy & also depression
of heart. Delirium of a
wild char. very common.

Mode of Administration.

Intubed before insensibility.
5 minuts for being wide
awake. under asleep then
current in grain volume.
If one 5 p.c. of the vapor
be present exposure &
ever explosion occur.
Partly shuttly out oxygen
& it has been found that
vomit of vomiting ~~is~~
by about partial anaesthesia.

~~Highly fatal anesthesia.~~

Tuesday, January 18th 76.

Chloroform first acts by excluding air
then it enters the blood & becomes
the acting of the blood corpuscles.
Excludes oxygen air with blood &
part of the O is absorbed - but if
using chl. less O is absorbed.

20 to 40 only units of 70 in 200 lbs

The red corpuscles not allowed to act
in nutrition of body - Experiment -
Seems blood on within etc -

2 effects of anesthesia - brain &
peripheral - Central.

Case of a man who lost part of skull.
Gave him chl. & brain became
anemic as in sleep - Not

confused, on contrary comatose.

As circulation being affected the
anesthesia is produced -

Central point & peripheral 2^o.
{ Stopping it short. the central
may pass off while the peripheral
will remain. { } pig little
& prolonging it this may produce
1^o the hemiparesis. 2^o the

embellish 3^o - ganglia & the
spinal cord to the medulla oblongata.
They. If one sense be tired all
all others fall in & sleep comes
& if to the sense of smell
is now paralyzed & the others
follow. Another theory. Chemical
formic acid in blood from deposits
of chl. & = formation of iron.
this must be proven.

Locomotor. Death by is at
heart. 2 vms. 1^o = cardiac
syncope & examine pl. &
if find cardiac lesion
don't use chl. it produces
shock which stops circulation

P.M. comes, bent off. traces of tissue
changed & fat. Mononuclear blood
in both animals & both vertebrates.

Or ^{heart} may be firing continued, no
blood at all. rather than last.
May kill by leakage of Ca^{++}
over Ca^{++} & opening of heart & vessels.
& narrow set closed. just as with
 CO_2 . pt. may die & it not a further
has into lungs.

Again the may get into lungs
& drown as Frank put it.

Some have suff^o of pt. idiosyncrasy.
= say don't know how.

Amstr. may call into action
a disease which had been latent
or unsuspected. especially in kidney
when fatty deg. & he follows.

Draw tongue well out & with
wide pen etc.

P.M. usually great excretion
Lungs cut - fragments.

Chl. supp. & prevent blood from
coagulating. Usually dark color
or rich color. Ept. & austin
great effect. At first causes
contr. of minute arteries.
but in large dose. vessels
dilated & tendency of conpulsions
to form into rolls. Feet
redder in color & change in
shape - $\text{Ept} \text{ conu} = \text{ven}$.
 $\text{bi-conu} = \text{arterial}$. Crystals
of ~~chry~~^{antacid} shapes. Cord = plant
varies from mode of death.
fully more in right than left
coron. Brain not as conp.
as right output. Also ~~very~~
eff. in ventricles. Membranes
of spleen cord cyst. Putrefaction
sets in soon.

Treatment - Feet - fine pt.
fine blood - Artificial respiration
Open windows. Howard plan,

of bellows - take Dr. McDaniel
method - use pressure on sides
and abdomen & suddenly take off
the pressure. Marshall Hall's
plan scarcely abandoned.

Sylvester's plan used now - Dr.
Emits in ventral arms & down
again. St. on back etc.

Next indication - Stimulant -
electricity from battery current
along phrenic nerve. Positive
pole at nostril & current to
negative at epigastrium, current
for 4 seconds & 15 second interval.
Another plan - positive pole over
phrenic nerve - Dr. St. once cut
down on ~~epigastrium~~ pneumogastric
nerve & supplied electricity but pt. died.
Use of air. to nostrils, injection
per rectum etc. - Important to
preserve for some time - Dr.
Skill can get 3 hours.

Again mouth flaps to see
not shut - just scarcely
hard between teeth & throat.
One of firm of ment wh.
had been in stomach.

Look out for haemage.
Lie arteris.

Administration of Chloroform
Simpson plan best. Not
necessy to have open affarts.
Lungs with sponge tied in
bottom. Cone of starched
towel - ^{don't} plan in vertically at
first entry of asept. pt. airtight.
Air sub-ⁱⁿ tation in head - no
long sub-ⁱⁿ tation 5 minutes.
at 2^d stage withdrawn.

Don't talk or fuss around pt.
ears at it by in plunging
Keep all quiet & dark - no
strong medicine - any pain a
flaps firm but no exertion

before admittance - by post-mortem
ex. by him in a separate room
after being rendered insensible.
Drops in 1/2 dram & acted 1/2 dr. to
travel at a time. in obstetric
cases one 1st stage need be
reached -

Diff. between Chlor. & S. ether according
In comparing, find Am. nit.
ether & European Chlor. Said that
no case fatal case from ether.
1000 of Gross now 25000
in St. Crutcher was no fatal
case. In view of 49 cases of
death 30 from Chlor. & 19 from ether.
ether is safer. because 1st
rather more stimulant 2^d no
cumulative effect Augmentation
given on for 20 sed. 3^d does not produce
the heart. expt. when of large quantity.
On entering chlor. pleasant, easily
admitted, no opil afft. may be

the moment to find
a copy of you after it.

A diff. in the personal
and entire efforts.

As which with quite a few
the more so than all.

Wednesday - January 19th 1876.

Preparation of Chloroform -
1st Spirit of Cal. by mixing
part of Cal. & 2 of rect. aq. s.
chloroform in a earthen vessel
with water & almost any ext.
Dose = 20 to 30 m.

Liriodendron Chloroformi = fruit
of *Carya*

Crop thick of Cal.

Dose = 10 to 30 m. as stimult.

Styx Vomica.

Strenus vomica known by *Styx*
& *Arabis* but not fruit, or
Roman - name for *Styx* =
to over throw. *Vomica* = vom.

Saxum = Rat. bone or rat poison.
That the *Styx* may be taken
by them and to it. Indri use
seed 10 or 20 of as prophagant
bit of serpents. Eggs of *Styx*
low am.

Form in - - - Fruit size
of orange. Yellow brown
exterior. Pulp with seeds inside
each seed a flat disc-like
exopl: red blood compound.
size of still stick as 50 cent
I cut of fruit is similar
with min. Seed - grey color
soft velvety feel. odor like
leisure. Diff. of powder
heat steam it fruit then
dry & powder. Bark =
"false angustatum bark"
adulate the bark. The
seed = smooth, no out date
to smooth. Seeds pin like:
Strielum = tetivie - Dried
in 1878 (C X N O 2) - - -
1 lb seeds 1st pulvise a above
ground & dry mill. Now
in sub. of fruit in water
& alb. round of fruiting leaf

add 180 gr. act. lead & reum ppt.
12 hours after decant & add acetic
acid. Ppt. the impure stibium.
Further boil till no more white
& opaque. Melt to concentrate
wt. crant & yellow matter
again. use of 2 parts of
water as usual. Repeat &
purify. Theory is that the
alkali is in comb. with air
Hydroxide. The lead may remove
colored matter.

Character - silver color if sample
etc. - Cryst. 3 form. = plates like
mica? Rhomboid. 8 sided
prisms - each edge size as
for Sol. in Chlor. Sol. in
diff. menstrua. 15500
cold & 2000 hot water is cold
350 each as other. Bitter
con 55000 & water water
1 pt. bitter / fallen water. Neutral.

Detachable gears after firing.
1st of color test - Matte glass
& rod. to ring n. shade & center.

Plan on vit - SO_2 & $\frac{1}{100} NO_2$::
100 SO_2 & 1 Me ^{20/100} ~~dup~~ ¹⁰⁰ ~~of~~ Lead - &
rich blue color - unan.

followed } purple violet
red orange yellow - this
play of color - the test
simply superior, says he
rare & not likely to occur.

Prox. of reg. into of the
pore lead & n. also - on
Prich. of Kon Chem. ind. But
do not work so well as
reg. counts. as test n.

2^d test - small galvoni cell
& pair of plates shaped like
cup. Neg. pole & with
and a glass cover.

3^d - Physiological - to frog n.
1/100 & small hypodermally - legs
will act by battery.

Simpler but not so valuable.

1. The thons. from amber yellow ppt.

Positively under mic.

2 — acid

3 Am Cl. $HgCl_2$ & H_2O .

In acid & dilute it in aq. liquid.

blond &c. Take it in water &

heat & concentrate. add acetic
acid to render it free from salt.

Next decolorize by straining thro
cups of MgO or being in
contact with animal charcoal.

For Liquor Str. of R. Plan.

A. pr. str. 6 m. HCl.

2 doses of pot & a water.

Dose 5 to 15-ans. Intently it
may also be used hypodermally

to relieve of a pain. Layer
and water primis syrupus.

Dose accordingly to effect wanted.

$\frac{1}{2}$ to $\frac{1}{10}$ of gr except as mercuri

for $\frac{1}{6}$ to $\frac{1}{12}$ c. mean amount.

One may be produced in
Eggs 5 1/2 gr. - a day later 3 gr.
without vitellus. + one of gr.
but upon or adults.

Strong action on surface
of blunts & ducts on it
is rapid about 1/2 word &
shorts life - this seen in
to a cumulative medium.
To a young female Str. in
for weeks. no acty - and 2
week of stiff neck & feet
time for are bent
Lys - Chills plus 2 6
weeks - due to accumulation of
Str.:

Blusia also in max. volume
may be dilute Str. Males
artificial than Str. Same
effct. to 1/2 centesim.
Dors. yolk. penic. diff. for
two of Str. also better &

non sol. in ap. Not off. same
y^e h. bill. y^e K. May be st^d &
yellow coloring matter - N^o 3 same
eff^{ct} in yellow coloring matter
& is thus a means of disting^u
it from str. Hypocyanin also
& Hypocyan or str^{ict} acid.

Yellow coloring matter in
pith of the wood.

Actions. in small doses
tonic effect & inc^{re}ases pers^{pir}
& peristaltic mov^{ts} of int^{est}
walls. appetite sharpened less
weak. Slight haem^{orrh} - Sept^{ic}.
G^{en}erally better understood.

Eff^{ct} = pur^gative effect in small
of st. has found in little child
at first of stuffiness in limbs
or face head. After a little which
giving a little. with constit
slight cough, pink, pink a storm
the greenish. Cold & skin. appears
& more & more.

Of log ^{opus} ~~catu~~ common in that
cause - Swelling of pharynx
impaird - tingling & itchy -
Pith - Bitter taste on one
side of tongue - Not much
fruit - with ^{them} of gas &
life as of *Amelanchier* ^{interlob.}

Pain in epigastrium - Dribble.
Anxiety. nervous in hand.

Want of sleep - inobtus of
nose. slight

Acts to increase sexual desire.

Setinus precedes head pain -
Stomach - Differs from *oidg* -

lock - pain which is always

preceded wound or frost bite
&c. By *Setinus* now such.

& due only to their structure
Stiff about chest - Diff. respiration
jaws shut & crown open &
murch of pain.

So in *Set.* at part & after

all muscles ~~of the~~ off
of the - horizontal tubercles, rigid
cond. apt. apt. cond. not
do - in alt.

4th of expand & perp apt. str.
5th of cond. lit. bow back or
fwd. or to one side (call
her name) not in str.

6th of unli tel. not just
till cond days. It - 12
hours.

Muscles are those that just feel
the stiffness. Marshall Hall
describes diff. of spinal flex.
spot true that there is the diff.

The act of str. is centre. &
is dist for new centre &
own muscles not off.

Spinal cord on anterior or
posterior trunk & extends full
parts in the vertebrae
not comp bit to apply in ways
the expansors - in the dearly alt.

Sensory ganglia also, as
lymphatic nodes or cords to skin
etc. Patient part or sensory
tract of spinal cord also
also but in 2 day or sub-
ordinate. but in continuing
of contact with rest of the
nervous system.

Sub. P. M. Effuses - not
numerous. marks, number of dots
blended. so some no initial not
except brain etc.

Treatment. Anyth. containing
tannin or gallic acid. all
good. it. so alloy resist.
but no unity already absent.

I. Pr. Cl. etc. Compd but
now time & are fun to play
Ibaco so painful that sensory
etc. not be intruded in if possible
etc. I have ample food etc. in
the time. quantities it get is eating
a portion. so up to hospital.

Thursday July 25. 1846

Leaves of young *Strigium*
but use hypodermis mean
as stomach pump of *Cryptus*
and plays on its stream.

Test for str. powder of N^o 40
Nuxvomica powder create but
still dest. life. even 3 pr. 1/5 pr.
found - yet no unben. return.

Utes - In paralysis. If under
any form str. or nuxvomica
they get not always irrit.
str. require into case exhausted
pni. In. No use if paralysis
depend on structural change of
men. cortex - no cerebral

excitation into substance of brain
are in follow. Some cause
attract & kept up a habit 200
were. & in apoplexy pure
clot is attached. In powder as
lead over mercury.

Of the rheumatism - hyperemia
fere etc. - In several
form vertic oculi - 1/12 of
An in 1 dose in 24 hrs but
ful in 203 dose begining
with 1/20 - send 2 1/2 (3 1/2)
1/12. Of any acute form,
bites, taste on side.
For dose it for a while - All
muph in local form, as
loss of sight of retina - apply
phils & temple - then 1/20
3 for. applied on raw part.
first apply a soft cotton
for 20 annts. In several
form of local form, as of
retinor tendin of unit -
black for. arm & the to
border 1/100 & 1/200 apply
in ptid and skin. phid -
Of the Nerv. excent as act.
excess - 5 to 10 m. 203
a day - Form to contin

or at same time. In tremors
of animals (of Amur & S). Inorea
In epilepsy not for use
of doubtful use.

Swampy, broken ramayitis
weak nervous ps. loss of
appetite, water-brush, also for
morning sickness of pregnancy.

Chronic diarrhoea, dysentery &c.
menstrual troubles, also in
constipation & diabetes. For
promoting circulation in fever
As Lewis' remedy also -
Depressor motor.

Preparations.

Dose 1/4 to 1/2 gr. 3 or 4 times a
day.

Linctus from 203 seed & spirit
of oil dose 5-10 an.

Physostigma viridulum?

Calabar Bean from west
bank of old Calabar River
Auric foliage - butterfly ^{alg.}
flowers. Stigma - cap - has
one stigma.

Propit size of grape from
bean - round shape, in
length $3/4$ inch - rounded surface,
flatter than top. 2 broad
lobes, rounded - central
margin, rounded & pro-
trudes by prominent ribs. 2
stipes - not to full length
when eaten with vent
ribs. 2 parts - shell &
nucleus - shell and a club
brown color - & pyramidal.
arrang. to eye. Purple ^{flowers}
set ^{fruit} ^{look} had ^{creamy}
Nucleus whitish color soft
of flesh. Odd like half
libum seed - not ^{be} ⁱⁿ
look.

Actum prout = ~~the~~ sanguine,
with in diff. of super. Alch. tr.
and - S. etto exp - alkaline
reming - purifd. Found in
1883 only - In liquid form like
drops of oil. Best used as
framing - in wood. in water but in
acid & alk. & in alcohol
found - more in ether -

It sets an red & blue in color
Alch. vapor if heated. Weak for
2, beam have only a trifling effect.

Actions - at sub. pt.

falls as if had impurities went,
2 to 4 am - no part sympin-
of more pulse weaker &
smaller - pt. complains of
weakness - throat - weakness -

Pupil of eye contracted - ~~at~~ Eff.
in health not marked. But
in disease marked on spinal
cord. spine chiefly on this.
Poisoning by Monar? & conia?

Poisoning & Calcium beans. In
children at some thousand
of sup with ballast - 2
sorts of toxicity - 1 Rapid
2 slow. (1) weakness, thirst
loss of weight, loss of vision
squamous contraction of pupil.
2) sup of sugar of
p) sup of salt. nausea
loss of strength, vertigo -

Dysuria, numbness, salivary
glands flow for months.
Excretion. Rapid swallow &
Thallus - faint & dies for
syncope -

Purging thick empy contents
epilepsy - copy of bean eaten
entire. If pt vomit very
nauseous - p.m. few appears
no irritant been taken - result
fluid in internal canal. out.
substance - sup p. & m. owing to
the bean itself ~~part of it~~

Little feculent subm. blood,
soft & placid. If any acid
water found to act them for
the poison chop up &c.

Leads - Acid (Syring) yellow,
green etc. blue -

Acid - same effect as on a
salt of this

H₂O₂ & allu₂ blue & red as
strychnine. yet seems to be

caused as symptoms & ppt. blue
also fewer colors (if any) -

Treatment - Induce vomit.

or energe it - pt. cannot

swallow. * The stomach pump
won't remove impacted matter.

The pump best for liquids on
Nax vomine good could do.

By order usually 5 to 10 m. of
tincture ind. skin of arm etc

1 or 2 m. every 5 m. till

impacted masses ^{then} - Suspend on
surface. Atm. or transf. ^{then} per rectum

C. Bean as an ophthalmic op:
very simple - must dilate
the pupil. & its acti on is
of ~~eye~~ iris. & clear of pupil - the
radiating. & ~~is~~ around margin
of ~~eye~~ pupil. C.B. paralyzes
the radiating fil. & the other
having not to ~~open~~ ^{open} the
shut up in 20 min. but
beginning in 20 second. Pt.
has cont. extent of iris. is short
sighted, put etc. & 4 of water
& of tea 1 or 2 drops dropped
in or semilunar pit of pellucid
eye of piper root & with tea
it dissolves any & eff. pupil
as oph. spec. for catarr. the
view of the atropine. over
etc. For long. squintus of
old people - eff. accing. to get
of ~~the~~ tann. - Paralysis
much with the eye

This is perhaps most import.
Color of iris pale the opst. eye.
Cornea trans - conjunctiva. Brach
tendr. over lid & tearing excretes.
Ecstasy. 1 eye into of both. Exulting
on the anterior surface. Dizziness
on x.

Effect on the muscles - a paralysis
condition - The person still
posses volition but no ability
to carry out his wills at first.
Act on motor tract, opst. way for
stimulus. Muscles affected are
still contractile as shown by the
electricity. Blood not to be with it.
Part next part flow of blood
lost opst. legs first apud to
pye arms shuld with face
at du chest. aplexia & deact.
Voluntary muscles first affected. U
Increased secretions following the beam
Perspiration & flow of urine. In delugent
state of pulsing circulation -

Friday, January 21st 1876.

Examination on:

Preparation, facts, properties - uses
in medicine - Reasons for its physical
and medicinal action - Doses - Effects
of respiration - compare with Chloroform.

Density of $\text{C}_2\text{H}_2\text{Cl}_4$ vapor. Mode of administration.

Effect of overdose of vapor. Sp. c. & condensation.

In applying chloroform, where plan to follow

How often discharge - Ether, what solution is

discussed - M₃ ether & ether $\text{C}_2\text{H}_5\text{O}$ Physiological effects.

Proportions of ingredients in making chl. Try

where pt. coughs under chl. to aft. pinch

touch eye or. Ch. more agreeable than ether.

If pt. is sinking how long will he continue to breathe.

How Chl. causes death - p.m. signs

after killing by chl. Treatment where

death is threatened - Pt. on a slope - fresh

air or. draw out tongue - Stages of anesthesia

in ^{using} chl. - pt. senses - mewing - pinched ears -

heavy sight or. With ether pt. wants to

get up & spit or. 2 kinds of anesthesia

central & peripheral -

Effects of cal on red blood corpuscles. ^{fresh} Blood
mixed with cal. & shaken in air took up
less O than without it.

Excito motors = stricnina & mus v.

Depresso motors = Calabar bean - Strychnine pyridine?

What part of plant is stricnina derived from.
Describe the seeds. Used in paralysis. Lumps
on brain not. Ref in functional cases.

Proph of str. to teeth water bitter. Lact for
str. in blood. ^{oil} Dissolve crystals with acetic
acid. period of color matter of NaO SO_3 or
amide content. Dose. as nerve. astruc.

Largest dose in nervous exhaustion $\frac{1}{2}$ to $\frac{1}{4}$ gr.

How is str. part. Color of str. Lact - physiol.

Color test for str. Lact and physiol of color.

Part on mus. str. acta - motor tract. pyridine.

Antidote = Calabar bean & rice water. Absorb
action of ^{the} poison (str.) ^{as ant} for lead & mercury poisoning.

Dose of ^{the} mus vom. ^{of} str. ^{by} str. how diff.
from str. ^{from} ^{the} stricnina. str. terminates more rapidly
system diff. How eff on brain & cerebellum
as well as spl. cord & on parasymp. - Galvanic
test for str: str. dissolves in cal. ^{of} str. = ant. & str.
Microton imp good but dangerous - Ethyl & Methyl
comp of str. ethyl good antidote. ^{of} str. ^{of} mus vom.
Brazilian is it a good alk. str. alk. is empoison - Calabar
bean - size, shape color, eff. on eye - Mus.

Monday, January 24th 1866.

To derive any benefit from Calabar
bean must see that it is
a proper case for it. And
when there is extreme nervous
debility. Must be given
boldly - to cause ineipient
toxication - When pupils are
slightly contracted know it is
taking effect. If contr. excessive
& vomiting added to nausea
& mucus retained, palatable
small then taken too much.
Best mixture hypodermic, com.
of Fracis' t_{ix}, and ash. in a
few min^{ts} see evidence of
its action - Admin in 1/2 hour
relents & hour & passes off.
One dose little eff. 2 to 3 m.
sh^d be repeated by 1 or 2 hours
& repeated by just 1/2 dr. as to

pt. strength &c. So virtuent.
I am felt & lower along
~~must~~ nerves efft., a little
odd with the pains & effects.

Pt. may take it - then usually.
Innate tetis is one case that is
useful -

Epitaphy also not Br. or better.
As antidote & Strucine - Efforts
in frogs &c. have been tetanized
& the spasms prevented - Yet many
of the animals died - Str. holds
on its effect by the C. Bean
so the lact must be continued
and sub-let to corn -

Inflam. of spinal chord & Spinal
Tritis

For muscular rheumatism & in
Coma.

As an antiphlogistic.

Preparations of C. Bean

Extract & oil of the beans as they are
shall & all - Rice & Synt.

in 3 parts of spirit - 2 square
sadd & pour liquid. Then
thicken = thick treacle dark
reddish brown -

Dose $\frac{1}{2}$ to $\frac{3}{4}$ gr. Pills &
mixtures - with water = w. of sugar
thick on eff. a mix. days -

Lincture - 1st ^{of Edin.} ^{2nd ^{of Lond.}}

1st = 100 to 150 grains of 100

2^{oz.} of beans. Decorticated clasp
& 1^{oz.} in 2^{oz.} alcohol - color
4th of clay with = Dose 5-10 m.
but 10 in tetanus as minor

an unripe (cutin bean)

2nd 2^{oz.} C.B. & 8^{oz.} Rect. sp.

Dose = 10 m. -

Decoctum & infusion -

for inputs & app^{to} surface
Paper made of paper web
in the pot

Suppositories ^{1/4 grs} of ^{10 grs} with Comp.
Watery extract inferior to alcohol.

Bromide of Potassium = a
depressant - motor

Pr. K_2O & Fe (filys) & water - heat.
Clear green forms - add more
more K_2O & salt etc.

2 or 3 Pr. K_2O & Fe & K_2CO_3 &

1 or 2 Fe (filys)

New holds to Pr. but by adding
the alk. salts - Fe & CO_2 falls
down being the K_2O in soln.
May be made double of K & Fe .
This used for the Pr. K_2O .

Heat to drive off oxygen -

Character - ^{etc.} - Fe but perfect in color
or with Fe present is of green & red. Deliquescent.
Degradeable taste, bitter flavor. Sol in aq.
Sulphuric.

Tests - soln. - red then for K & red for Fe .

$Fe-Cl_2$ yellow - other tests.

For K . violet tinge in flame - Pr.
if recognized by presence of the K & more
by ~~strong~~ starch get the orange color
if I print blue

Adulterants of Carb & Sulph. of K
known as Ball.

KCl diff. to recognize. The
salt found in aq. add S_2
Ain - in a warm heat &
if pure the Ain liquid will
remain but if not yellow &

Break up fine ^{of particles} on
flat surface & dip in S_2 &
~~slight~~ search for blue color.

Actonin - Dragm. 1000 & 1000 ft.
with water. Atterative in small
int. dose. - prevents pleuroton
coughs. & also of proctus.
Increases secretion. Effect on
enlarged spleen. No better effect
iron. Specific agt. on uterus
& exerts sedative influence
on that organ per nervous
system. Effect on lower
animals tetanoid action not
always followed by great relaxation.

Frog becomes very soft & limbs lie
any way plain, get now & then
jilts or - ~~is~~ ^{on} a ~~effluent~~ ^a ~~mus.~~
& sensation lost.

Action on heart decide - & regulate
the number & after death blood in
all parts of heart.

Put it on decussate heart of lower
animal & ~~tridentin~~ ~~series~~ ~~off.~~

Cliff on stupor & ~~or~~ ~~mus.~~
Differ from C. Beau & ~~etc.~~ ~~more~~ ~~on~~
effluent ~~mus.~~ ~~with~~ ~~C. B.~~ ~~on~~ ~~the~~
motor ~~mus.~~ ~~or~~ ~~suppld~~ ~~a~~
want. ~~Ready~~ ~~abundant~~ ~~&~~
increase ~~the~~ ~~curations~~. ~~deltd~~
in saliva & - ~~in~~ ~~brain~~ ~~live~~ ~~in~~.

I urinate soon after caty &
eliminated slowly 2 weeks & 4
weeks ~~more~~. Temperature of
body - ~~Cl~~ ~~for~~ ~~days~~ ~~effluent~~ -

Spasm of ~~non~~ motor ~~centr~~ ~~of~~
~~below~~ ~~capillary~~ ~~contract~~. In hind leg of
frog - if cut off both front & hind &

free stream of blood for
the mind (i.e. total efflu).
Bromism = Letting of pt.
passive - By the loss of security
of all nervous membranes.

Dilatation of force does not
produce security. Pt. loses
special senses. can't see,
hear, taste, feel, speak, swallow.

Face pale, limbs emaciated
or bowels diarrhoea. ^{then} ~~constipation~~
Emblem of intelligence, intelligence.

Part treated.

Use of KBr. For cerebral
excitement - if ~~not~~ for mental
anxiety or apathy or sleeplessness
for long time. Dose. 100
to 200 gr. by roots two or three
times.

For epilepsy, is best that
can be given. But not for
petit mal. Best for severe

or general disease - violent paroxysms
certain cure.

Not sure again right as Spina
a Cerebrum - Brain.

5 to 15 grs. 4 times a day with little
to - as eye ball or columns
Am. Br. or Kd along with it.

Day -

In D.T. + cerebral matter -

Loss of sensitivity - Irritability
connected with stomach or
liver. Local loss of sensitivity
or local paralysis - or apoplexy
for trifly seen

For females 10 to 45 - 2 grs
mania, menorrhagia - Gravit
et.

Do 5 to 1/2 drams More of some
neutralized preparations, Dangers.

Chloral - $\frac{1}{2}$ scr. alc. vit.

Chloral - ^{second time 100 803} - $\frac{1}{2}$ scr. alc. vit.

Liquid. Used as ~~the~~ Chloral
hydrate - Preparation of Chloral.

Chlor - irregular shaped prism
fine beads of crystals.

Clear - translucent to opaque like
wh. sugar. Sp. - $\frac{1}{2}$ = 1.502
Sol. in water - Foliate.

Smells like melon taste
like bad bitter orange.
Formate & chloride } its
decomposition

Said to be ¹sober ²pure & ³quick
in effect than Opium.

(1) Does not produce dyspnea
& vomiting, constipation &c.
no injurious effect on system.
In Cancer of the prostate. Op.
relieves pain, yet is injurious
by its obstructive nature.
Chloral no such objects -

3' Sp. depresso minor. Cassitude ex
off. Chl. ^{to} fresh in exact head also -

Tuesday, January 25th '76.
Chloral continued.

When sp. is correct indicated - as when
it is off - system disadvantage -
Larger range of adaptability than
sp. Ureth. function in variety of
circ. - number in delum & more
disperse in room - disturbed & off -
all ages - Certain progress according
to circumstances. Time just before
hour of sleeping - not in day time.
I saw pt. great after it; in dark.
Full dose. Sh. be pure. Alcohol =
Communit impurity. 2 Chloral = (1)
Chl. alcoholate. (2) Hy. water - (1) is 1/4
pre. stage than (2). Chloral is
More quick. 20 minuts for its adratⁿ
& pt. thk. even more. fall
asleep immediately after it sleep
3 to 5 hours, not like nat. sleep

No bad dreams or. unless
suddenly disturbed when awake
prelim. Weakness - if faint
sleep again. During sleep
pupils constrict & turn up
as in non-sleep - No wild
terror if waking up pt.

Given to pt. in phthisis woke
up in terror - thought of accth
wounded ear - eyes & injured
Hysterical in peculiar connection.

Heart not much dist^d
as on brain only - Temp^r raised
or depressed a little, no rule
between pulsations & heat.
Abund^t of blood & tend^r to chloremia;
this is true. But if so are
shd detect odor in breath but
not so. Again, quite true ^{that} when
chol. left in alk. solⁿ is true
to salt of the alk. & U^l. yet
may not be as stated above.

Cells in blood at temp of 90° of
blood. but alk. of blood is 8.5
phosphate of soda - Cells in spleen
is decoup? into formic acid &
Cells & decouped & formiate of soda
& NaCl. found in urine. Again
the efft of Cell & Cells. continued
~~off~~ the indiff. D. M. found
not same degree of centro-
spirals - ^{ex} lucid sensitivity
in nerves while chloroform much
common sensitivity. Exits
after action so that efft. greater.
In a few instances cells. patients
action of chloroform. Was supp.
if pot. with Cell also chloroform
would do - not so proven, on exper.
under D. M.
May prescribe Cell. for all kind
of wakefulness - no nausea
also for dry course of
fever patients delirium & delirium.

In D. to. & rheumatism (clay
evand) for pains, especially
in stomach a cramp &c.

In dyspepsia useful in some
does with little to. with water
Cancer good except for the
ulcerated period.

For diarrhea & dysentery, but
not so good as op. for these.

As an antispasmodic
paroxysm - Epilepsy
apt. had attack very night
kept off for weeks & attended
by light.

In intermittent fever was good
sometimes not so.

For hiccough affec. - phlegm
& chon. br. - Assays enough
as op. does.

After injuries with pain & ill
po. to sleep.

Does not seem to be in any

Alumina. 1/2 dram. 1/2

with acacia mix^d & conceal
taste - 1/2 dr. does for d. to. not
safe for more or Prurin.
120 grs = 2 drs. in 24 hours
was more Dr. H. ever gave.

When Chills is toxic - great defect
of dis. of exhalantia - Alumina
ends, Dema follows -

Po. who have taken much skin
diseases, eruptions & eruptions to
avoid treatment. Not depens-
mota. **Cnicus**

C. actae = hemlock - nat. fam.
~~Scroph~~ umbellifer - Seed - com.

Root also - Root like Ginseng -
Sweet taste - Leaves numerous.

Always suff. ant. - prur. prur. - cold
in odor, taste bitter, acid flav.

Best from Britain - Recheul
an elyae actus pupa caria.

Is remarkable for being a sign.
Clear, suppl. in like water but
Kupij spils. 1/2 dr. profites =

Weak brown - smells of urine
& straws - empytic. 1 drop
on eyelid of wit - killed -
to 3 units - injd to view of 72
dog killed in 3 seconds -

Extract from ^{herb} bellus - for rolls.
of fruit 2 1/2 oz of liquid cornua
too large a portion. Rubbed
extract with water & distilled.
Jalter it in a rep of water.

Leads 1.0. with weak acid
blue then red. 2? Saffron &
an ell. yellow compound. If a
little be had with the air
vapor.

In small doses eff. muscular
system - impair contractility -
palsy. Quick in its action
with some extracts. Voluntary
muscles first - diffy of paralyzing.
Eye more or less contracted and
extinct.

Vol. oil also - odour. Rub leaves into
1/2 oz oil - strong - good sample
3^d another oil. Dark tarry &
dissimilar action to Coria.
Effects - tetel of male & mamma
in female - atrophy of both.
Redness both of eye & sterility.
Any emul. of water &c.
As a narcotic - surge antispasmodic
& sedative aft.

Specifically in strabismus habit.

Crusts ulceration of cornea
kind. Any emul^o of water like
Coria - It. ate leaves. Ayo pure
way helps. Amaloss of amun-
sinitis - Arus nob, chest-
nob & diff. body, vice nob.
 pupil emul. toxic or irritant
& raise eye lid - Died in 3 hours.
Action of Coria on brain - Diff.
For the narcotic - based Alton
Kent Coria irritant - the

Alae - in creta, rumalphia (in
fr of bud stylis) for anulus
epilipij &c - Mentions of perianth
Preparations - Powder = dry leaves
of the buds from 18 but on
fine No 3 apterid killed pt.

Bojitiq as inert substance
intd to stomach - dose 5 to
15 ps.

2^d Extract - from ^{fresh} leaves - brewed
in water preser (as hypericum)

3rd 55 p.c. of juice in cream
dose 5 ps. Some sports in
6 to 8 weeks. Dr. - swollen

72 ps. of latter. Res-frag
does not pour - 57 3 - juic
of Lloyd to apt. dry ill.

Poultice Linseed meal Cris
sooty anodyn - for abscesses.

3^d - fine extract - cream in water
Spiked with spirit, or mixed
with pt. opus 58 of juic dose

355 ms.

Linnæus 2 1/2 g seed to 7 pint
spirit. Down 5 to 15 m. for
each 9 unit spirit with
ether. Much expense - water =
Nitrate of Ammonia.

Fruit oil yielded it. was
discovered in 1844.

Chambers = flav. oil ethyl -
volatile - orange red vapor -
Bo. Ph. says boils at 205
°C but it was 85°.

Sp. g. = 0.877. Do not mix
with water but with alk. or
potassium permanganate solution.

Thursday January 27-576.
Wiped yesterday - Review of lects.
Minute of etypl. Uses in various
effects on sensor nerves in
the opacuous retina.

As₂O₃ - Prepared in Bohemia, Sillesia
Germany - also for wt. analysis.
Crystalline form of powder - Sol^{ly}
Reduction to metallic As. Tests
in solⁿ color of ppt. Crystals noted
at base of a piece of metallic
copper - Ground charcoal.
Obtain on acct. of its volatility
with ^{ortho}phosphic acid, K₂Cr₂O₇ for
small quantities - 300 of 1 gr.
fine dust crumbly or sublimates
with all the chrs. Fil of
part of tube evacuated weigh
dust high to rim of crucible
weigh again - Diff = wt of dust
Phosphorus (which may be raised) = Ag.
from sublimation. The Ag. clings

found of globules - wt. & brilliant
but in As. no globules. Cd too
very fine crest but has brown
border. I ascertained that glass
they carried is due to lead
in the glass which is in the
glass itself & is indelible. I
again stated As. itself used in
making glass. True that As. is
used but is all driven off again
in making the glass.

As H (ascumated H.) test was
referred to speaking of St. 40, 50,
& 3rd day. write As. in solution
The H. combis write to As. = pos
triple system, blue with luminous
smoke such ground on glass
vitreous or sea fan of rings 3
concentrically grey brown & wt. fan
is outlined (shows opt. in small
Hauke's apparatus) Clean after
using so that the very next specimen also
test 3rd as that it may not be affected.

As. 3 rings, ^{but} the 2 rings black
sooty - Evolve off & test in
moist way, ^{find} as long as the
diff. rings produced.

If the foam be mixed with
butter - see Reiche's test.

Uses in medicine - Fracture
of a pair as a tonic.
Accumulate in system &
had. he now supposed him
to tighten fibres in skin of
face. Heat on about epiglottis
mainly fixing cartilage, at
tongue. Parts used for first
set dark - Cryptin. Appli-
cation in eye. Main tube &
secreting. Order ^{of growth} change.
In large doses = irritant.
In intermittent form - see
Nights habituated to it & that
may take other forms does
in Australia, Styria - see

form went up to 4 ft. does.
In anal. state - constant.

Weak as antiseptic - Prevents
putrefaction.

Prisening 3 kinds - (1) death
in 24 to 72 hours (100 days) (2)
5 to 8 hours (3) Indefinitely protracted
for weeks to 2 years in one case.

Symptoms differ - (1) commonest
Inflammⁿ of stomach. Inflammⁿ of
mucous membrane severely
Specific effⁿ. Great distress ^{pain} heart
at about pit of stomach & up
abdomen & chest. Increased
pressure. Vomiting - complete
nausea - blood occasionally.
much mucus. Tongue stringy
& very hard ^{as} board. Color of secretion
in Du. passⁿ is taken as low
in Eye must be sold with presⁿ
blue, or salt. Pain in large
n - dysentery, perhaps of retention
wind red color. bright in color.

Desire to urinate, scalding
pain in penis. Pt. sinks from
exhaustion.

(2) no pain during or change
in shape, but is in nervous
system - Head symptoms -
Drowsiness delirium convulsions
coma -

(3) Compliments start like chronic
fatigue - Loss of sensitivity
on surface, loss of hair,
local palsy, loss of memory,
paralysis of wrist. Anemia
edema - meningitis - Time
of dying = $\frac{1}{2}$ to 1 hour after
taking it but even in a
few minutes & hours. At
24 to 36 hours - 1 case in $\frac{1}{2}$
hour, or life may be extended
2 years -

P.M. Abscesses Septic virus will
find a staph. mass under

more thick than usual - ^{2 cups} Prussian
color. Extensive of blood. Gangrene
not often. Discharge bluish pale
ulcerated toward pyloric orifice.

Perforation rare. Influx as early
as 2 & ulceration in 4 hours.

In old cases case deep yellow
from action of HS on the Co. ulc.
is diff^d in the membrane.

Treatment - Promote & produce
vomiting. Stomach pump -

Antidote - old way - lime.

Get small cups² & peroxide.
Dose - mg. - 10. hyd² peroxide into
of its wt. Fresh & must not
be more wet. If dry of neutralizing
to part of its wt. 2^d Magnesium.

20 part curium mg neutralized / Co.
= ~~Antidote~~ is solid - Hyd = 1005

Pruss^{ic} - No form or color as.

HS & chemical food - Prussian
up system which the Prussian & being
clearly - Disrupts secretion.

Preparation of AsO_3 - powder:
Dose $\frac{1}{2}$ to $\frac{1}{8}$ gr.

Liquor As potass as. proportions
of ingredients to pint water. Add
lavender & green in well stopp'd
bottles. Dyst. emp^d better to alk
etc. AsO_3 true - doubtful. No
loss of CO_2 in impure (?)

Dose 5 to 20 m. for adult

Lung 2 dose 1 gr. AsO_3 -
May be given to infant.

See cal^d As - Dose for AsO_3

2 dose & cl. & 1 pint of

The acid mixed. The AsO_3 water
found in. en^d flask - heat off

Dose - same as above. Same syst.

Advantage of test - more knowledge
to system. For AsO_3 & c.

NaAsO_3 . Take AsO_3 out & calc
side - not & heat till

effe fuse & pour over stone to

harden, residue soap. Crystals.
small crystals - Dyst. AsO_3

Optd wly Ba. C. Call. & 3rd S₃
At 300' low - at 300' low, 40 p.e.
Dose (prev), $\frac{1}{2}$ to $\frac{1}{2}$ gr.
Sol = Ligin today at 4 p. 503
rate = dose 11 to 20 m.

Monday, January 31-1876

Genl. rules in p^{re} as. - profan
& p^{re} a p^{re}ptive. 22
now p^{re} on emp^{re} straitly.
 $\frac{1}{2}$ to 1 hour up to m. - Genl.
with small dose 5-10. food
to be closed. D^{re} of emp^{re}
of as. of Cop^{re}tion & p^{re}
u. u. p^{re} up - of p^{re}.
found to be, & can urine
with Act adm. stop. Safe
to stop for 2 days at end of 2
weeks -

Uses for int. p^{re} u = 5 &
& advantage of weaker & p^{re}

When spleen enlarged with pain
5 m. 4 times a day during period
of presence - & also to be
with some Q -

For neuralgia from malaria.
Periodic pains. Useful in
hectic malarial - also
with Q. at same time
may use narcotics -

Against fits of serpens in
E. Indis. No support
the Dr. 2 drs of Fowler
solv. with half of
water & lemon juice. 4 or 2
times. 3 or 4 times -

Styptic food & collapse
follow.

For skin diseases. Gen. rules
apply to this & may some. Also
note that do. did not be
find some of acute inflam.
symptoms. They must be

Reduced series

2^o - number could long
in chronic cases, rapidly
dropped entire to eyes
disease entire proving to put
it returning. I am not surprised
in such series also in Xema

For cramps & cramps
divides - locally & usually, also,

2 Rules vs. with very
strong as essential or a² very
weak. reason by that of
chills part & drops about.
& a² if about to weak
provision.

Also for Chronic Rheumatism.
Mentally & -

In local affs as toothache, can
not cause & mix also, morphine
excess 1/8 gr. etc, 1/2 gr. in &
1 drop sweet.

For sore eye - Conjunctivitis in Strains
Culicis - Catarrh. Chest affections

For asthma in cigarettes. for
old caloric & embolism
with stuff. 8 or 10 times a day.
For chronic dyspepsia & for
cure of spleen.

Mercury = Hydrogenum. ves.

Metal crushed. of. 13.5 - 4.6 -
Divalent. part of of purity of
floures - Lead. Bi. Zn. St.
= adulation - floures have tails.
Print. paper no stain Lead a
bluish stain. 100 million corpus
in impurities - bits in
Fridge at ^{38°} 39° ~~38°~~ Paper.
With water bits. By equal in
up for 5-7 days & dry
for 8 or 10 days for burning
fresh for barometer. 15-in. !
15- degrees. wont where -
80 in cup is surface in cup.

Part of its silvery spot mixed
with copper. may be killed by
by treatment with Saccharine
or with fatty substances, especially with
Not-silvery HCl or with
nit & sulph acid.

Used with part over of elements,
also amalgams with metals.

Spain, & Hungary - Spanish
120 fathoms deep - jets of dry glass
out. Also as limonite (with S)
by decomposition, easily by reducing
apparatus. Ammonia & lime in a
retort heat cogal in water -

Sp. gr. of imp: 6.976. The crust in the
CaS is formed. Ept. is iron bottles or
in bags of goat skin 3 or 4 pieces
thick. Boils for 6 or 10 hrs = crude
quicksilver. Refine to Hg us. puriss.
Take 3 lbs. in retort & distill 2 1/2
lbs. Iron 3 lbs. HCl & a little
water. Clean for s-u. & decent
wash Hg with codage & lime.

Does not always succeed.
Reasons which are given are
nature of Hg. Foreign matter
and of the fatty base or charcoal
matter. Uses. on surface of
body but seldom any profit.

Internally was a good cocculus
for constipation. Deregulation
of intestinal canal. Rectum
disorganized. & mucous glands
depressed. Entoderm.

Metallic Hg. taken for 203
576. It is to overcome
mucous case, as involution
of bowels a probe which is
pushed up or down. Suffer
the Hg. drive out the poison.
the configuration may be depressed
& so bad as affects ^{the} disease.

A teaspoonful for stools &
for dissolving silver coin in molar
of stomach - Water in use. By New

boiled for worms. Case was.

Vapor of Hg for lungs &
use of. as bar & the. matter
mixed in Hg. mixed. Derranged
"fornication" as ants creep on skin.
Numbness wrists, deels feet. the
tremor in muscles = "mercurial
tremor" - most intense in ext. of
legs. & the up & the down. Inflex
curves. To walk with pt. pos
on elbows & knees. Stammering &c.

Pain of neuralgia - tic dolorem
& spasmodic. Elypt. of liver. Dark
hue of skin. Rheumatic pains &c.

Antidote = Hyocisina.
Prepo saturated with Hg. brass
or tin tray water with Hg.

Internally - now only after
though subdum as ^{wordy} being dim
& "Priming" (under Hg.) Effects total
as attention in small quantities
in long time - In mercurial
as symptoms.

As a sulphoglycine in inflamed
drains.

On liver - Effects are in heart
Kops diff. for in drains in man

It is a weak sedative
to the ~~of~~ of. sub. & very
weak. acts on structure
of liver. When any of these
is in very small doses.

Bile is viscid. The urine
system absorbs fat from
urine tissue - ~~its~~ under
its influence weakly & cold or
are irritable. ~~More~~

On Kidneys - a diuretic
urine has excess of albumen
at. phosphate & uric. Smalts
and effl.

As to Absorbents - Stimulant
also. fluids. beneficial in
stimulating the secretions. Pure
longer ~~and~~ impairs appetite.

weakness & rig. Diarrhea - emaciation
loss of fat - & edema of
lower extremities. If pt. has
a fracture of jaw & old cicatrix
open gain - hemorrhages also
Rt blood, occasionally as in influenza
If learn the blood to stand would
show a buff coat & capped
spur - If lay tube thru thin
& dark sig. at in vessel.

Clot imperfect - as can be
see hollow. By pin eye
does blood encircle & destroy.

Attends its elaboration and
of blood for use of tissue & for
char.

On the Secretions. Urine, bile,
urine, sweat. Of pain with a
diminution, Diarrhea effects - also of
fasted, aliment - indeed all
secretions are. In females increases
the menstrual flow.

Mercurial salivation, as known
by acid taste, capillary, on working
or using silver - by time.
Gums swollen, swollen
tubercles rose color & also other
brim ulceration. face & neck
swollen - pressure behind
of jaw purple - pt. samples
of acid taste & factor. Gums
swollen in side cheeks &
purple & teeth impression.

One person 16 lbs. & follows
of saliva - 24 hours.

Seldom seen now a days.

The saliva auto oxidized as
rather potent in coagulation
album globules etc. Alkali
reaction -

Other causes of salivation
may be taken by & get not
the best. K₂ SO₄ and
Ag. Ag₂ take auto in

fox gland, sp. coats - oil the
inspiration of the patient also.

Case of a man who thought
he had syphilis & made us
swear for his pills (of his)
& salivaria pills in taking
them safe.

Tuesday, Feb 1st 1846 -

Salivaria may be used? & for
substance in water or a good quantity
of cotton wool. Small fox also.
Liable to recur if one salivaria
was when not by a 2^d time.
This is imp. as a bad case of
salivaria may be said to be
over & over in course. It has
a remarkable eff. in metallic forms
in the system - prevent setting &
salivaria = ~~K₂S~~ H₂S + K₂S -
"Regular Salivaria" & by in any form
of mode of administration.

Quantity depends on the idiosyncrasy
of individuals. Irregular forms
= 1 acute febrile — = violent
Comet, clam, red gums, loquacity.
Soreness & protruded tongue. Throat
pains for - diff. in amount.
Pain in dilatation, swelling of
upper part of neck. Heat
throat. quick pulse.

Treatment. Stop in the febrile
state may be copied and soon
a pint of wine with strong
(20 530 grs 53) Agt, N^o 1 -
Lotions - Acet. salts as 3 and 8, 3,
Acet lead &c. Sallic acid.

In nausea. Lead blocks with
Alum & sallic acid — with
a tit. myrrh. — pond. Scleris.
Rug & Cal potash - Cream
of tartar - Sulphur 100 to
4 of treacle - K^o & guaiacum.

Ureazic form of solution -

Act of lead & sp. in body -
white - cold fermentations - Hg.

ferment in an other form -

Confid? with other ferment -

differs =, it - universal ferment

any ge - also in early life. & 2

the f. in any disease - also

usually of the upper division of scale
as degran system & exceptive process.

3^d - Hg. more diffused - nature of

more limited in extent - as

side of tongue - inside of cheek

Order in the extent - in Hg.

in gums first, foliate of the cheeks -

then to the inside and proceed inward -

Left - Hg. first of breath -

passing taste in mouth proceed

it & also diffused all over.

see history shows exhibition

of Hg. & distinction has seen the

various as c of pair - rare -

Administration of Hg.

See if pt. have Hg. idiosyncy -
3 fam. ^{Do} full child - 3 doses of
M. purpur.

2^d not when acute inflamⁿ
only after return of saliv.

Not in unhealthy char of
les drug suppurate sweat
in pyemia - Disord bone re-

Useful promotes formation
of pus. That is seen in suppu^s
is coexistent of the disease -

Not in extensive pyemia.

It is improper in ~~pyemia~~

6. ^{the use} not in Scary - Disord suppu^s

7. In scrophula & ptyphoid oris

Cults are called up of Hg
8. When tending to form fat as
a morbid product or heat
killing.

9. Anti edemi. hemorage
& Act of red corpuscles.

10th not in rheumatic disease -

11th not in spleen disease.

12th - habits & kidney affs.

Preparatus 1. Mucilage & 2. Chalk.

1st Ag. cum creta, triturate $\frac{1}{2}$ of chalk
in a mortar till particles of $\frac{1}{2}$ of chalk have
disappeared except few powder adhering to
walls. with lactum & d. m.

1 part $\frac{1}{2}$ of chalk ad in
3 parts = 1 $\frac{1}{2}$ of $\frac{1}{2}$ in fine sieve
 $\frac{1}{2}$ p.c. being $\frac{1}{2}$ of $\frac{1}{2}$.

Pills of impurity with gum &
wax & oil you will get a
flattening of $\frac{1}{2}$ in center. Double
suff. with $\frac{1}{2}$ and $\frac{1}{2}$ of $\frac{1}{2}$ line -

So prevents comp. Enig taken
up by stomach. is a mild form

of $\frac{1}{2}$ - is used for children & c.

as with = parts $\frac{1}{2}$ to $\frac{1}{2}$ of $\frac{1}{2}$ of chalk

Seems to be for children & c. to relieve

billions in adults. V. m. m.

Use with lactum & d. m.

5 to 10 grs. at bed time &
aperit in morning (Lactar
water &c.) Laudan. & eye.
Their hope " " - 3 grs. doses
at night - & - yields faeces.

Useful in some cases of exophthalmos
& in some a day eye discharge
set in add op.

So many cases of diplopia - all
may be cured without it.

No use where no hard cleavage

^{Wm. H. W.}
& fibrinous deposit & had been
may be used - fine pt.

Chemurgant 22 & 24 grs.

& in some forms of 22 grs.

fine till pt. comes down
wants - pt. said he keeps in
of writ. don't put it - The
give clearing substance.

The idea is to first arrest
the exophthalmos & so

after the latter is felt it is
now directed against all involved

Oil of Sassafras - $\frac{2}{3}$ 3 parts
 roses - ^{1 part of} essence of roses -
 unity by trituration with water.
 Same style as last is. 103 -
 or 2 gr. of in 6. Put in sun
 & soft of some simulant in
 water & blue fill or filulati
ceruleum. No of. globule
 shd be seen magnifier -
 To test - rub between finger & thumb
 & put on glass & hold up to light.
 $99\frac{1}{4}$ Melanthin by $\frac{3}{4}$ of 1/2 of 1/2.
 of. Red when old. take say
~~to~~ rub it - of hand beat
 by steam - fit for hand - Is
 adust of Prase blue or indigo -
 very weak in it. Sulphur being
 in common - If it is not
 as a purple - in form in it in a
 2nd way very fine S₂ added to
 the red roses & brighten appears.
 Is a very fine salt.

Blue pills act same as Cum Creta - but I same
Decies - except for chronic
inflamⁿ: attended with clays
of str. as hardening or copious
effluⁿ now 3 or 4 fr. of pill
not 3 times a day for a
week will ^{usually} resolve.

Dropsy of some kind - not
in local d. as hydroceph.
or pressure of tumor.

That suitable in Dropsy
in healthy persons. fine
aly water, ^{1/2}grs. Digitalis & gills.
Cortex = 3 grs. Blue pill 5
1/2 gr. Dig & 1/2 Sgills -

Pugmentum Hydrargyri. Sops
Oment. 1 lb of. 1 lb lead
& 1 of Suet. mix Suet & lead
aft with Prob. of Sops -

Smaller proportions will do
good in cures of wood.

Propagated from a part of ^{beauty} "flax"
 a very fine - old wood
 leafy appearance - and had
 a crown - blue color -
 blue interior - of. in fine rain
 89 p.c. 1 p.c. oxide. Sp. gr. =
 1.78 - Can extract by a small
 bit with a shell. the strata
 of by descent. Decant & wash
 in aqua potassa but sellen
 by - Was once thought to be
 by was the real action in part of -
 but found not to be so. To test
 for ox. by pass steam of H₂ through the
 matter put in a glass of H₂S. liquid
 with turpentine as a preservative - Burn
 & fitment of each. Used as a matter
 1/2 d. to 1 d. rubbed on it about 2
 introduced into blood. In some persons of H₂S. &
 writers. bleed by pt. stream of H₂S. & vapors &
 flowers of sulphur found in the.

Liniment of H₂S. blue out. Comp
 Camphor & sol. of Am. used for
 various &c.

Supporters of Hg. cerise color
Hand - for dysentery -
Dr. B. Brodie said best medicine
for dysentery - Rubbed inside
aria pits. Many Rites
useful as dressing after
bleeds. For Whitlow in
intermittent state. Rub in
in Fevers for hours 5 to 10 ps.
ant. Resolution common.
For Varicella or Small
pox to prevent it -
For killing vermin.

Wednesday, Feb. 2^d - 1846 -
Mucous plants for study & -
Sulphur lead ^{comp} (Hg. Sulphur)
Plaster Amⁱⁿ with amucous -
Am 803 with 12 oz of L

employed for indolent tests. So
much like the last.

Mercury Salts. Add 1000 ^{times} ~~parts~~
its wt. of alkali or alk carb.
Am - & a sublimate film of
Lead add nit acid to sol. - add
Amulater copper heat & Hg of Hg.
on drop sol. of salt over sheet
of copper id nit acid & spirit.
Other tests an for to 2 elem
of Hg salt - 1st fixed alkali
with pot ^{or} am a purple test.
with the pot salt = lemon-yellow
color wh. change on standing.
2^d - KJ in sub salt = purple yellow
HCl - sol. of Hg. with the pot = red
H₂O.

1843 for paper red to go.

Ext. Chloride = Calomel. also as
white clay of sand. In the
form of cones & in the side
pyramids. Made of (1) in comb
its elements. (2) from Cor. subh.
(3) of pflin for sub. intr. & the Cl. when
the Cl. is exp. The phenomenon from
10 of deep by. 73 the 78 the Cl.
The deep by. made one = substance
of 7. Pub in another & supply
the Cl. at. 17 no. one & order
on resin = Calomel. The
decomp. diff. to explain. Change
either in the tribulation or in the
sublimation of a function
both. The appearance of calomel exp.
on vessels made in. no smaller
is hemispherical or corners, in 75
trough: percolation. And when
present on surface. Of made

in a copraeni vessel is impalpable
powder = buff or yellow ashen.
Support the edges to have Calomel
in fine state of powder - This done
by pouring in or steam the rest.
In its way Jewell's calomel is
made - Apples = 2 retorts
meeting on opposite sides of bell jar -
Calomel in one retort & water
in other - A vent hole in bottom
of jar to allow dry & calomel
to get dry - The cover is better
for metal than fine wire paper.

Properties. Sp. gr. = 7.15 to 7.40.
No taste or smell at: water insoluble.
but if heat long yellow - heated in
dark in glass jar - By light - yellow
orange & red. Nature of change not
understood. It should be kept in
dark. If a little heated in test tube
at first - condense - change it about
in tube - no change. Quilla alba =
wh. case supp to be mildew.

Alk. sublim & again certain
in water & by chye it fly
to Con. salt: Ad. ordnd 5 for Calomel.
Am & sugar. pt. ill, died &
was found that Con. salt found
to shd not be given. By heat
of body &c. Deco pⁿ cats, plane
at tempⁿ of 200 to 220 (roast)
Chye - Liment with op. salts
of body found decⁿ pⁿ.

A sailor got Calomel per month
& in presence of Na. Cl per
retinⁿ water - eff. of con. salt
followed. H. G. with in 2 hours
found H. G. & H. Cl -

Eff. of $S\frac{1}{2}$, $S\frac{1}{2}$ & H. Cl. on H. G.
Cl. water also incompatible - Am
& Calomel = black soup? water
compⁿ H. G. &c.

Adulterants: = wh. eye - plant of Paris
Chalk. Calomel sed, is perfectly
sublimable - None of all

is Com. salt. which tho' not
purposely added forms. Lent-
of cold water made drink in
also the Calumel. S. etc. still
better. Lent also the water
of an extract of Com. salt.
brought out.

Actions - on surface or toxic apt.
Morris's circle is also sensory
nerve. It takes away itching if
applied on surface. Skin - drives
also eye cures. Some a little (in
first state) into a small globe into
eye, or on candle hair pencil &
knock off into eye. for affec-
of cornea when ulcers not ripe
for chronic granular lid of eye.

Use of Calumel for chronic
conjunctivitis. for inflammation.

Internally, along intestine. Propulivent.
203 for ^{puts} certain purgative. acts on
line & on wall of bowels - Seen for
pancreas & increased cap in chylus.

green streaks like chopped spinach,
Spleen at outlet & powder of alto
blood -

Wt. 20 grs. = main sedative.
now seldom purges much -
Stools dark and color. powder
all edemic ^(bloated) ends of intestine -

Morbid, 1st. Mercury curvum -
weak. acute. acute pulse
small, egg-shaped. palp
of heart, in m. bleached base
of appetite. pt. dies suddenly, esp.
if he exert himself. 2^d

Mercurius mercurialis - Lower
line. by strangled; Rotates
of blue color on seign pressure -
Hemorrhages for nose & gums.

Stomach above part of white
Mercurius dypterygius or diambocia
Twisty pain in umbilicus. few
frequent stools = ab. tough like fat.
Salivary fluid -

Propose severity & active leading &
Billings fever -

Salty in meadows or bogy tatty
conjecture affts & glands &
peristalsis & bow, earis.

Uses. As an antiphlogistic. and
Drops in 2 pr doses, ^{each} 2, 3, or 4,
hours & 1/2 pr. powdered Opium for
viscere & ana tunds & diarrhoea.

For confusion of seras anemia.
Grain 1/2 to 1/4 pr. 3 or 4 times a
day, for old thin dies for
Aphritia tant.

With jillaf

With Na_2CO_3 2 drs. & 2 pr. calomel
For purpose act on re -

Useful in intestinal affs. for cholera
for example at Bellet from Dr. Boyer

A. ^{Boyer} Dr. Boyer plan ^{of} 1 pr. calomel
& 5 drops tr. Opium 5-10 15 or 20
units. Then 20 drops Opium
omit any more -

Also in Country Colera -
also dilge. etc. extant
wants by units & ans -
1/8 pr. cal to Opim. - pills
and added food -

Colerul in any case a run
runs obstructive for any
cause. For number where
stones are frequent & a run
average volume of 200 - 300
To elude 1/20 & 1/30 pr. also
or units each soda. & chalk
food by 200 & 300 in 2000.

Also for Chem. off. purors
system. B.P. = pills already
described: plus food. 2d =
black wash & 1/2 dr. & 10 oz
lin water stand till dept.
subsides. add 1/2 ounce of scum
Thoplit for purifying. food for
various uses. for an
brinjal kind -

Thursday, February 8th 1846.

Corrosive Sublimata & Mercuric
chloride of Cl. or per Chlor. of Hg.

Made of 2 parts of chloride of mercury
coming from Sulph. of Hg. & 1 part
red sulphur & heat. If certain
amount is added with peroxide
& sublimed again. Nature of
compound - $HgO_2 + HgCl_2$. Precautions
in making it. Brick-work furnace
entirely from & sublim. part lined
with clay. Cor. sub. Sol. Calc. int.
Properties. Solid crys. of 2
no odor or taste. Effy.
flavor. Crysd. for work sol. in
Aq. alk. crys. 1 to 3 but only 1 of
col. 1 in 7 cold aq. 2 1/2 only alk
Not affy. of min. acids without
effy. Sol. chlorine & acid reaction.
Units with Haller. 5 from double
salts. Expt. of light decomposition &

As acid. Sept. 1891. Colic & vomiting
Ag. All soluble & is soluble
in water. Organic substance made
it diff. to distill - Not not fixed
Cucurbit, Catechu, Coluba,
rhubarb, Secumia etc
substance etc. Added to
Albumen with sugar & solidified
as in albumen urine. Comp.
with water = Albumen of sugar.
Sol. in water of water substance -
As albumen is antiseptic - Don't
give too much - Also combine
with fibrin & casein substance
So emp^d to prevent species
especially of brain & nerve.
Tests in water & glycerine
tests for protosalt & in acid: 1 or
2 others! (1) With the ^{fixed} alkalies yellow
& much alk is pink and = mucous
oxide with water (2) Acid = white ppt
= am^l chl. mercury (3) K^l S. Sept

on proportion. sol. in aqueous solution.

(4) Small. small quantity of, more dark.

(5) H.S. small quantity of, more black = H.S. (6)

Process of the H.S.

Again put a little of the salt in a test-tube heat & a ring of metallic

of forms in cold part of the tube.

Then take a pin of gold drop Cor. st.

in it & touch with a key & at the

pt. of contact the H.S. is deposited. This

is valuable when combined.

A weak concentrate & then test.

Effects of Cor. Subl. (1) on large doses.

Constituent. 2 or 3 gm. upward fatal

Prof. Anatomy of this university gave

to me & to do so a few minutes after

from albumen.

Case of poisoning & head. Acid taste

in mouth. rest in throat. Diff.

in swallowing. from red vomiting

depression, high fever, various symptoms.

Albumen, rest in albumen, specific.

1. In Con. Sol. symptoms earlier
than As_2O_3 (2) As_2O_3 of taste in
mouth. (3) face swollen - pale
& anuric in As_2O_3 . (4) Diff.
in swelling present (5) blood
non-pigment in excreta by me
& stool. (6) Nervous symptoms present.
(7) Renal excret. more purplish
than Con. Sol. (8) Subt.
more amenable to treatment.

In Chronic poisoning Affy
with mouth - red gums -
ling. in mouth of chills w.
tongue edged & anuric.
P^{ts} bowels in. emaciation
bloodless - edema of ext^s
& paralysis. hair falls off
pains in bones. present in
night.

P.M. Apphans most toxic
in acute poisoning. Stomach
slaty colored for metallic Ag.

enclosed in mucous substance.
Oto think it a p. th. mass.
That found alg. penter came
& found both extremes, thick
subacute tissue red - perhaps being
Ulcera rare. perforate never.
Bovels also - the tissue is soft
Soft of albumin plastic matter.
Heart hard - rigid - dark. Liver
compact - white of face.

Treatment - Antidote - best
= Albumin - wt. of eggs. One
egg to 4 grs. Milk or flour bread
& water - good. Metallic iron 5
parts & zinc 1 part - This
soft. Metallic quinine.
Hydrogen Sulphide of Iron - weak
evolve above taste & ^{small in} breath. Has
been tried on animals. Op. been
given.

Action - similar to ^{met} $\frac{1}{2}$ Hg. - Leads
to iron secretion of kidney & skin

Shd not be given to a child
for a kidney disease - Proliferation
of pulmonary venous - Not
so likely to relieve as other things.
It too may form stones.

Decidua - Sigillata (in all
stages were tried) best for the
2nd & 3rd signs best 2 days -
1/16 to 1/8 gr 2 or 3 times a day
in pills as sub. and or Sol.
am. of pt complex of the
top of comb with the
for skin disease as

for venereal taint - for
of thalassaemia in Strains, Scrophula
er. 1/8 to 2/3 turbs. curiosa
10 lb. 2 or 3 times a day -

Sau-tu-Q-erol. it.

For impurities of cornea. Been
used for tumors (of uterus)
& for clean. thickening of
wounds.

As a bowel oppr. as a cautery
 painful & irritable. Sub. Solu.
 In pretty much broken - sup.
 skin & freckles etc but this
 on & replace freckles etc a
 few days. To remove discolorations
 from skin & freckles &
 for green spots stains &
 Nit. Silic. stains -
 1/2 oz. Cond. Dh. l. am. & 8 oz
 distilled w.

An alkaline Solu. of Am. salt for
 warts, corns, & for use off &
 tooth, or 2 lbs. adg.

Dose 1/16 to 1/6 gr - Bo Ph. Solu.
 = (1) 1/2 simple salt do Sol.
 am & 1/2 pt. w.

Yellow wash 12 gr. C. S. & 10 oz
 lemon water for ulcers & for
 improving obstinate warts.

Whipp's = ^{am} Hg. Am - made from
 Cor. Solu. 6 oz & 6 pint - Dist. w.
 & 8 oz. Sol. am. add. last.

After dephos filters down to all
no change by agt of H₂O.

Suppl. Du Compit of Cl & Al₂O₃
of Hg - a solid - in part
or ^{no} of chalk powder - no taste
small si. bird in eye - yellow
also if bird in ^{eye} H₂O.

In Clu can bird about in
metal. Dist. for charcoal
drop am & calc br. absp.
remains at.

Advantages - chalk lime in
in are not volatile & wh.
type is Wavely so.

Not used in med. but as a poison
salvage agt. - Mergate. H₂O
in air - 84 per. nit. 103 nit.
To fall like ^{same} as blue vit.

(DSubox (& Nitric Ox))

(1) = numerous ox. or the ox of Hg.

Shark Hg. in air by enough or
subit. with sulfur or better

or by paper from a sub salt
F. Hg... the Hg process =
Calom & lime water. Falls as the
best. In preparing it, don't add
too much of base and also
forms.

Known as oak powder. soft pale
amorphous smell. insol in aq.
& alk aq. - but by heat a white
H₂O. from then using the same
of alk. at 500° gives off H₂ (mistaken)
& lower heat ox. for. In light
a thin blue or olive red rise.
Occasionally ductile with flame
& can fit wood for fuel.

HCl. tests it for H₂O. St. & no
H₂O. got from it. But was a
mist. using only a small amount of water
low instead of blue nitric.

Used for removal of tartar - with
salicylic acid other purposes

5 to 10 wt. - 1/16 Examined to date ready
Friday - July 4th 1876

Monday, ~~to~~ Feb 7th 8 1/2.

Red Ox. Hg. = Hydroxylic Nitro-
oxidum. is really a red ox
& nitrate of Hg.

83 Hg 3 N₅ - 92 ag -
1/2 the N₅ added & heat
up till adz receive the
the 2 1/2 & a water till
wax & am w/ - heat
as long as any red
brown disc - history of
making it by play all at
once -

4th N₅ - Cya to nitrate
of Hg & 2 1/2 ag & heat
down to N₅ & brown
Red Ox - with all the
Nitrate -

Chas. red scale, last
strong temp. fine print
life quantity of the upon.

See Book II (miscellaneous paper placed)
Materia Medica.

Monday Jan 15th 1774

Aloes - resin - Siamensis, Indicum.
Hepatic aloes. Barbadoes aloes forms
an olive yellow powder. Today =

Cape Aloes, Aloe ferox &
a — all Siliacina.

In large masses. in buds
all in seal cases. aloes
thumb - "thing" & social
with each - for brown
color - green & ripe light
not so frequent as Socotrina
& even dried leaves.

In p^r = for yellow & {
p^r can tell an sps.

Redness on disintegration of
W. says after long time fell off
not as in the aloes.

Var. Ballina alone - become
suff'd when kept in
to horses out of as
it is to Borbad but
not use.

7. Dull. rough. dark
Color all in leaves
taps or seed inside.
all kind of alone
yield in common.

1st bitter purple = Advice
suff'd to the saponum.

Pop² for Deers by adg¹
P¹ A & string & rope
= Salin br. of green

eggs being. my bitter
Salin aqua at being &
also in for Optic but

not in absolute but in
in ether. Suppl. to give
the pyruvic acids

2^d = Resin? Aloes

pp^d = spontaneously for dec.
in water = drugs.

Sol. in hot aq. vol. in
cold water with alcohol.

Ran = Raff. or. Dye
take no other complex

Cerupya beside resin = apothem.
given alone starts to
motions.

3^d = Aloine. Present at all
in entire state. Smell
of E. Dugh, though sweet
& power to B. Al. not
so - In run of leaves

of many sps. Is a
solid - neutral to purple.
Middle sharp eyes & 5
stars - ^{Sulphur} yellow color.
Sol in weak acid, hot
alcohol - hot aq -
in water if cold. 2 vases.
{ aff. - Nuss (1) Baker
aloin & Soc. Abine.
Dit. { SO_3 - Sol (1) Currier
red dentul. fruit in (2)

At first Boyle 1/2 &
2 yrs. suff. & purple but
found more necessary
& 55 yrs. but little action
no purging - Robin took
15 yrs. & no action whatever.

(4) Aloetic acid -
With $\frac{1}{2}$ SO_2 = cit. pale
and -

(5) Vol. oil. When 100
lb. distilled oil 103
pound. Light & sp
= 0.863. From odor
taste & fr. it.

Action of NO_2 acid on bill,
pr. of acid to yellow &
further new comp^s
= Aloetic, trisamin. &
trisostramin. Actions
 $\frac{1}{2}$ to 2 gr. twice for
Dyspepsia. helps chrysope
I take some time before

work - will take more food
but if to prevent symptoms
take 9 to 12 long after

In eye 2000 = apical
dyserectil = dooster -
now thin nerve -

Rough sup^d for these -
full swell. as time &

Sp. eff. on eye
intestines - more blood
to capillaries - So much
heat & tension's eye
taking it - (the dysentery)

So pyridil & piles. diff.
May be them on -

If one has never seen
from piles not find

but if has seen may
approve it. Not

diff. proof that is
cause -

Serous Piles and the heads
of alves.

On rectum of female
irritable uterus. It =
unhappy & may
restore Calamaria.

Contra indicated in
pregnancy. risk of miscarriage
to woman overgrown or
On men also substitute
for needle work. accide
verruca - Also as

sunburn for 5th work.

Acts on kidneys }
symptoms for prostate
So difficult in small

Does 7257 for eye 2
to 3 hours. all ppl. per?

In age does ^{will} not on kidneys
Lunged KO. Co. 2000
alkalis -

In duodenum. to be in
action & so there is
reaction. the bile - a
holagogue. Open the
duodenum - Supter for
being double in its action.

As a pyatle on
muc. ant. small
dose (2 grs) not painful
by (4 to 5) liquid &
muc.

In gr (10 grs) much serum.
Slow in acty taking 12 to
24 hours. This is due to
slowness of action.

Contrast to fambogue.

Does not irritate but
specific effect - differs -
this effect independent of
mode of administration - as
when injected or on skin
acts just as swallow
scales of a pill as an
irritant on skin.

If no bile in alimentary
canal also vomit out.

So too if hyper secⁿ of
bile a small quantity
act singly no re ve na.

To use in jaundice -

"Warm" class of
meds sent in abdomen.

also "Repulsive" agents -

flow to abdomen & so
relin head if cysts
Symphysis = excretory
pairs & heat in abd
frontal in right hypochondrium
frontal in abd
2 to 4 cuts send a
dose -

Best Coulin with
pawlye, seaweed,
& sea-buckthorn
& sea-buckthorn - Both not
tonic in more acute.

Uses

re. constipation in
elderly & debile,
of old persons - who
live alone.

Comp. with dyspepsia
feels with a morose
& headache.

For lead symptoms of apoplexy
Dose. 2 grains anct
& bleed if stopped.

For uterine discharges

For Dropsical dist.

Preparation

3 Rad (1/2) Locust

Extract.

1 lb. Seals

1 gallon body of

Must be put on
stir & rest 12 hours.

Now strain off liquid &

scap to consistency.

Dose - 2 to 5 grs. ~~gr~~

2 Alves strand melt &
strain to cloth exp. to
air - fine head dark.

2^d Alves in powder - Rpt
inasmuch as used & bitter
Dose 2 to 8 grs.

Pills, as P. alm. suatima
& Alves, Soap. Comp. of red
root & oil of turp.
5 grs. pills. 153 grs.

Pilula Alves. Asa foetida
Soap & red root - for
stomachic of cold &
for violent fevers -
15 or pills a day.

Rufus's pill, 200
years ago - Myrrh
saffron & compound resin
(4 Soap at night)

= altit, ^{apert} unygs, 2c

Tricheta A

Des, 1 to 2 lbs.

Vermine Aens

A. cedria ^{slu} ^u ^u

Des 1 to 2 lbs.

Compd also a bit more

A. KOC₂ eff. lignum

hot water. boil

evapor to 1/2 to 1 pint.

Loss add exp brof
cedria.

Dam = 2 to 4 oz. (or 1

win glass) mixed

fasciata now a

fung.) Inaprot

with acid salt.

Eden alm. ^{knowledge &} with skull
& KO₂ CO₂

— Auroa type =
Extraction compd of Colimith
Green alone. Jan 55
15 yrs.

— Compd soluble pils
r. mysh, also, soap
& tapeworm = mild +
for Drapeau.

— also compd w/ of
benzoin for
Dypterozyl
Jan 25 2000.

Pppus of Barbuda alone
than Analyses & form
about same way &
occur. found to

3² The same

Pills diff. also some
crude of red wax oil of
Caesium

In with K_2O, SO_3 -

Boiled in water engelen. 100
parts per 75- sol. with
Succinic acid 50 p.c.

In compⁿ of felling.

Pills electrolytic. compⁿ?

Similar to extract. but

K_2O, SO_3 in addn -

also on with hyocyan
used -

also fruiting same.

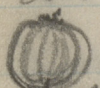
Gambogia (= gamboge)

From Siam - sent to Europe by

Dutch admiral 1863. 2 vants.

(1) Spain (2) Ceylon.
(1) unknown source - from the
Ph. uam is pin.

(2) from Lepidoderm pumbyum
Plant grows in Malabar & Luc

distinct fruit, size of orange. Shd.
 crown-shaped. Pinned from

boils - drops & juice yields
gum. New large pieces or
cut out with knife. Call -

Shallan dish, & stand from from
chest - Weeks to sell - how

it thick & is cooked better
hand to shape with ^{little} round mass
solid like butter - or may
be run into mould

stick of it. So (1) pipe over
cylindrical sticks - cut in bamboo
hollow or solid.

(2) Series (3^d), which with shape
= coglt. of small pieces.

Heat ~~not~~ coz could not
examine. Little pain as
it is rubbed down in way it

add of milk - sent ² milk

is not volatile. Again it
can be rid of O gas & Hg.

Mind strong over cup
yellowish as part of it
decolor. Invol. in ag. metallic
taste. Invol. for the red
sulphur. & no H₂S in
it with H₂S.

Use as with stimulating
agent. Take 60 ps. to make
Ointment. should have no
fruit. with ample lead
with no H₂O. The not
have any resin as it forms
Mempho shows any other.
Long been used in blow eye
A little of it (size of pea) &
some of the dried cap of the
fungus adhesion is.

Useful in chronic cases
of amenorrhoea &
& for dressing ulcers &
springs under name
of rectifd. Op. intally
to 30 days life or with
Pulsatilla act
its abortive power.

Subdivide or green
or yellow or Mercurius lodid.
{ trite of Hg & I - Take
rub together till union.
103 Hg & 270 p. I. Use
alcohol. rectifd. drop in
time & turn. Keep moist
as a paste. op. in small
quantities at a time. Sprout
Sulphate.
Clear. yellow color. of paper
dark. green tint. By
H. - Sp. 270 - or
in it colour -

Double in age. Spent etc. etc.
No. 1000. with Chloro
of K(?) humbi and.

Humbred out cool, a royal
color - may be used for many
of ~~writing~~ regard for
PSS. with black My. & in
and into As. etc. or St.
of H. Cl. in bulb of Solid
St. in Pod. of heat &
pinus & Acacia and Folia &
a few supra of lead.

Uses good - Antisepitic &
Scrofula & tubercle &
strumas. Specific eff. on
skin - In large doses ripes
stomach. Good for erysipelas
(throat & skin) as pill or
with gentian tonic. Also
for absorption of growth. $\frac{1}{2}$
or $\frac{1}{4}$ for 3 or 4 times a day.
skin off. - for uterine comp.

2 p. 100 Plan

(1) Pill of (Phenocopy). very
5 gr = 1 gr of salt.

(2) Mixture of 4 parts of white
whisky & laid.

Agst or tie a paper red
Nitin - gum & resin
A quantity of 2 cups of dirt.
Better for of C & K 3 & double
the quantity. Die with a part of
the mix.

4 3 of C & B - K 3 & 4 parts
of. all laid in 3 pints.

Color red but soft, in water.

Of to make by C, B, K, & L
& mixed with by C - Dissolves
in water. Ad - with yellow by C
from wh. it is obtained. Of
found but the yellow is taken up
& the remains. Is mixed any of
else in Phenocopy. Of tinted thin
yellow. of found red find. of
part of yellow by C.

Of yellow crystals he ^{is} ~~is~~ ^{by} ~~is~~ ^{substantive}
treated - Rhombic prisms,
Octahedra of solen. for Na Cl.
or for salt solen of K D - hot. on
Coalain - M.S. of 10 of fr. = 16.5
Kalt - rope = ~~12~~ 15.6. - Metastatic
tact - sol. in water easily in acid
of K D or Na Cl. Also - alkali or
ether. Data for remission of pig
of color red to yellow or on
hutz. Powder of acetat of lead
Kam of sunset tint.

Uses - as a alternate with cor. sub.
with some 480 grains - Dose
1/16 to 1/8 gr. more twice.

As a topical aq: & a counter
irritant. Aft. exp. animal, edentis
and fr pain heat & contraction of
itely pimples - Admixture one
only one - units - is certain
& decided & permanent.

Objections - fit - the skin & the
fit - the effect of the powder for children.

for Opium, Comminution,
Cross. For some analysis -
For Stire noting better -
see paper by Capt. Cunningham
Rumboldt appt. - India.

10 pm. red. 5 to 13 laid on
the exposure to sun's rays
as by a process at 1 pm
a 2d appon when skin not
died - rang a 3d - required.

cut casines. Attended but
not so good. Similarly in
this course - to use some
enlight. is for cyst or various.

Simple hypertrophy of
Effects of. Chlorine
inflamm. of eye. a pluming
or old. Cur. course.

For Lacerta's ulas (3 free) are
a weak value of ftes. In
obstinate ophthalmia - 2 go. 2 set
4 1/3 laid.

In separate decs - usually
 2 ps. Hg
 2 soln KO
 & Jaspulla & water
 Magnesia -
 16 ps & 1/2 cit. outint.

Red Sulfate of ^{Hydrogen} Alumina.
 of Roman. Ammonia Sulfide
 Hg & bi-sulf.
 Native in Spain. 2 lbs. Hg
 503 sulph. - with 10 S. add
 Hg & heat - fumes with
 dyes my eyes - so only
 small amt - some fumes
 close with towel. With
 heat - place in vessel to
 sublimate. (2 process). Residue
 = black - 2nd eye to diminish color.
 To obtain it of fine quality out on
 large amt, 2 heat shd. be made
 & sub^l by series. In offay
 excess & fuel.

Bent fin paid. Chuvic hat. Sat
Syr = 8.1. Books Struad willt
Lunen fubel. Kap no f
lypt. fub born - 8th
unpreparat powder. no
Luna no smell. 1st Sol.
in water. Hat 8. 8 Hg.
Opel. with red. at. in
Charcoal. Vermillion in
Kum for Red body Hcl.
Used as pig. not intell.
but as a fumigant for
Vola. for Pul. some throat.
Red Cauda pond = tallo
with vermilion. The fumes
are irritat; not a good
way - For cancer of glands.
A female died a jump breast
with 3 drs of Hg 8. some help
with blentat. fever, violent
salutatio. edema of arm
no cure of ven.

fatly.
Kun & acid set free & set
out to dry. If good acid, he says
no sulfur is made & unim-
ped. yellow color - often
brown or too thin or hard
& striated color & sometimes
as hard as to grind it.

This he calls an essence
of Mg . Co_2 & Mg_2 gases
come off. & a large amt of
material sticks to cup - temp.
= 140° to 180° F. & causing stink
of the long lignification from copper
Useful much prescribed. Useful
in eye cases between ball & lid.
for Alun corunctio, conjunctivitis & etc.
For Scrup disease as for sale. 2
part and 1 of this. For ring-worm
wash skin with as clear as if it is also
about to use, use this. Prof. Syden used
it on tongue. For old Alun with other
uses.

Tuesday, Feb. 8th 1846

Iodine & Iodum Iodine
found in 1812 } - a suff.
Chemist.

Found in sprays of - Bunt
spray as an attendant. In
spray an mist with a
yellow-lav on it.

In sea-weeds - names of 4 or 5 -
In deep water also - in
some land plants
Among units. Ag. Pl. C. - Ag. units
In sea water with the Iodine
& Mg. In mineral waters
of Germany - rock salt
of Szol - In Clifton water
Madeira Kelp = found some
of sea-weeds. Add S_2 & H_2 . SO_2
HS in set for to my friend's
Lent to 140' & Alu_2 added &
distilled when comes over.

I not liable to adults. Water
may be distilled & the residue acting
to white. Hold in bitules paper
or dry in Ash under glass jar
Coal plumbur, bk sand &c.
It is not volatile. Test.

39 gr. with 9 grs lime & 3 flid
of water a perfect cure.

Actions of I. - Indulged in small
doses = attractum & tonic & a
Sp. for scrofula = antistrumon.
Acts on the Secretions. gums full
& increase of saliva. incurs cure
of bowels & is an aperient. On
Lunatic. As a diuretic.

As an expectorant in dry Diseases.
In females = a venereal.
As an abortif. Prevents
of effusion in some Diseases. In
a few cases emaciation, but
fewer get confluent or
lose no weight. Acts to produce
atrophy of testicles of male & mammae
in female.

So come on with me I.

Spine complete - Dark
yellow skin.

As infant. Large cerebro-
spinal fluid - head abn.

Coniza - head abn, energy
cutant. Iodism - a
severe affe. trinito. faint.

Pain at pt of palms, fingers
nausea, cramps, and
symptoms. fever, swelling of
legs & feet. dies soon after.

Acute forebrain of I

Contra of throat, pain in abdomen

Trinito. color deep on chest

or none. Blood rare, fatty
supernat. 10 to 30 grs. protein

per. point ducts of lung
membr. Mucosa corum.
around pylorus enlarged. Yellow
ring on areola.

Treatment & Prognosis as the case

found in rivul. - soft. can
take 24 gr of I rubd up in
state as mudge.

John to antiseptic as ordy
can state in pencil or picture.

Album is beneficial as
an excellent. found in every
or same paper. Ask cuts.
of my K. N. the compound act
as cortex & powder.

Ulex - in flavor of fennel
Paint oki 1 a dg of tr. I. At
some time in Italy small ones.

For scrophes ulu - as a comb
over K. I. For draci of bones. I
useful in cutting to cut. In
strains conjunctiva

For rheumatism & pain. it
on. for small - for painted
over face. print pittig if early
white rock is - for. no use
when has formed. I painful but
not for long.

Useful in scaly aff^{ns}
- after sprain knees or
suppl joints. where there is a
For surface of tubercles. Noting
skin thin or never on
scrofula or scum's
For erysipels suff^d to prevent
to spread. As an injection
for hydrocele - Take 2 tea-
spoonfuls tap swell & draw
off fluid & inject about amount
of I with plain eye - pain
at first. Linnæa & quinine
fills with serum but forms
away - prevent adhesion of
the sides.

1079 to 2488 of sp. record
For ovarian dropsy - diff^{ly}
that eyes may form.
For effusion of serum into
as pleuritis - Is pt used for
eyes or veins. Sup: squeeze
out entire & diluted.

For warts & wens - faint -

Internally for leys, wens
obscure or -

Preparations. Some 1/16th of gr.
Super. empl. or oil.

R. Leg. 2.

1 Dr. R. 2

8 oz wnt.

1 lb of simple or 3 lbs a
day. New falls p. for Decem.

No 1 = 3/4 p. 2 1 1/2 R. 2.

No 3 = 1 1/2 " 3 "

No 2 = R " 2 "

Linctura Eodi = 12 3 2 + 1/2 p. ^{Pr.}
Spirit of the - Bron. ligid - Decem.
by Kuping -

See = 10 to 15 in. Dropp. it aq.
at time of taking -

This is the best use.

A stone on water 10 days of fruit

Compl to J.

$\frac{1}{2}$ gr J * 2 drs K & 1 ph(?)
spirit. Dr $\frac{1}{2}$ & 2 drs
Mugwort & Jodi

32 gr J & 32 K & added
together. Color fades & expels
air.

Linamentum Jodi

$1\frac{1}{2}$ oz J $\frac{1}{2}$ oz K & 5 oz
alcohol.

Vapor of J

1 dr J to 2 oz water
good for chronic plethysis.

2^d for chronic cough.

~~Use~~ a weaker soln & breathe
for 5 minutes.

J. inhalation good for pts. who
are apt to cough an exp. to
air & get sore throats.

Jodi Acid J & K to J.

till just white up & evaporate -
then solid left with J & K in water
Act beta J

Dore # 82003 pm.

S.D. easily made & passed 47 S in
Flora flask.

So solved the, strato crystalline
like S.D. if 100 part in flask.
short 20 part for S will sept.

Used for Chemi skin Decis -
1/2 & 1/60 of 1 pm dose intely
but too late.

had no contact for so outint.

Ind. of state of ruby 24 2 47 03
state for 1/2 03 47 03 from 10 2
away - Dr. Badi. of Flora

K.D. is made of sand
from K.P. - 10th J. H. & G.

Heats to get till pt from soln. &
add K.O. & K.D. in early air.

one for ppt. K.D.

of J & K.O. Liquid K.O. to D till
dark liquid - evap to dryness, fuse 40.
from water & find all plant geth &
3 that a opt punked Pt.

Wednesday, February 9th 1876.

Inside of K & Inside of K D both
found in the K D & I found
the heavy cap covers all
to K D.

Character of K D - Lundy &
Oleaginea in upper sample -
Sharp solid taste - Volatility of
high temp. - Accepitah to K D.

Try sol. in water & in spirit
K D tests of K D as above.

2² for D. (as before by Cl. = sent
Ant. acid = yellow. Sub salt of H₂
pale to yellow (H₂O). Nit Silica
light yellow. By dropping -
H₂O₃ & touch = blue color.

In solid state. Purple from
of D.

For adulteration - water of being
a sawtful sticky bottles -
The ant. lay. In one
Sample 74² K D Ch 772 water

is a sample of Prof. Christian-

The crystalline form obtained

It is soluble in Alcohol. and in

water of the K₂O also soluble.

By mixing and eff. of water

KCl, as a substitute of AgNO₃

The nat. p.p. diff. in depth of color

I or Cl. either Am. for pure

K₂O not sol. but soluble in

sol in Am. Br. as a substitute

Sulphate of Copper & of Iron test.

Pure Cl. third Solⁿ

Soluble in water. known by looking at it

has a lemon yellow tint & smell

of free iodine.

Dissolve in water &c. Iodine

samples smell like aspidodida

from organic matter Sulphurated

In heat & Concentrating in 1883

found -

Actions In small doses is Cl₂

D. = in 8 to 10 grm doses is a

sedative. Some patients' Saliva, urine,

Tested in theory HCl & starch.
Impairs the contractility
of albumen protein etc.

KO = a strong diuretic, increases
water of urine.

In upper resp & passages.
Nominous. Conspicuous red
as in measles. All of ethyl
medicines.

$7\frac{1}{2}$ grs. dried - 3 or 24
hours have produced striking
yet 3 doses have been
taken in a day - probably aborts.

When striking symptoms are
like those of S. Vomiting.

Vomiting & starch - Union
with starch & water - ant.

Uses - For syphilitic diseases.
Action similar to Hg. but more
benign & irritative
purifying blood. Best for
2 $\frac{1}{2}$ & 3 $\frac{1}{2}$ symptoms -

In affes of bones & throat for
rheumatism.

For pain & more eruptions
10 grs. doses 3 times a day ^{or 5 grs.}

Sarsapilla and its. for
S. of Hg & Sarsapilla. For pain =
face ache like neuralgia -

For sciatica - if acute with fever
add a little acornth. But if

chronic. Sarsapilla. In other
forms of neuralgia & acute

hydrocephalus wh. depend on
depression of tubercles in brain. Fr.

Digitalis good & combine with it.

Also for headache from Syphilis

or use mercury -

For getting rid of lead in brain
for system - Saffron out 20.

Also chronic eye squints, &c.

For acute of rheumatism of foot.

For some eye cases - varieties of
ophthalmia. 20 grs 2 to 20 grs.

2 or 3 times a day -

Preparation - Muyunta potasi 3000.

made from -

64 m salt of (K₂O)

1 oz water.

1 oz curd

Cod Liver Oil.

Oil Morrhue

from liver of cod - The oil of
the fish is like the liver - Same
of sharks &c.

Md process. Tub with
opening. Spruce bryls
inside. Liver sliced up
small - Tub suspended
for a tra - Acids in
sun & strain the bryls
into resin.

At Newhaven near Edinburgh

Boil liver & squeeze in
cloths.

Br. Ph. by steam heat of 180°
2 kinds = pale & brown.

A. as turin is best. Comps
of the 2 diff. really 3 subs =
1 pale - 2 ² yellow & 3 ³ dark brown.

1 = *Alum pallidum* B. Sp. = 0.923
Syrup. no smell. slight bitter
taste. Turin as well as being as
cold as usual. Forms soap with
KNO₃. In cold turin forms
fat.

2 = Sp. 0.924. Yellow red color.
transp. less ^{part} soluble in cold. 1/2
turin as well. Bitter and a little
bitter or. slight unpleasant odor from
rancid of turin.

3 = *Alum fuscum*. like wine
tint. reddish br. color - granular
by transp. Sp. 0.925 - Gally
sol. in hot & cold alcohol.

Composition small, very bitter or.

All contain diff. principles.
Organic acid - Oxalic lignosol.

SO_2 a good test = dark red liquid, being
formed. odor like acetic acid.

Made of ~~the~~ saponification
the oil, this is the test for acetic
acid the SO_2 is the test for lead
being clear and in. after of soda
= blisters of soda + this principle left
free in solution.

Besides the fatty being and an
acetic + butyric acid.

Collins oil decomposes by the
butyric acid. Falsine & trifluorine
suffice to cont. to the action of
the oil. I. Br. & emb. with
the P. in. The SO_2 = red. 0.05 per.
more apt to be used. Cal, Mad, etc.
also.

#8, SO_2 = test for cod oil. Take
thin & let drop of oil the of
 SO_3 & ^{vinegar} upon pour off a brown
color. Same reaction of bile. SO_2 =
test for turpentine in the oil. No
sapon reqd. in the cod oil a white

as this is acute and already there.
By adding scents & fixing agent
of dext. Not-much if artificial
only acervol. & scents.

Actions - Blood to surface &
perfor. For cold extremities.

Valuable re-energetic & attractant.
Its action. In venereal diseases
loss of appetite, head ache & -
less. Good for:

pt. Scrupula. Engl. of gland
infection. Bone pain, &c.

Begin with 100℥. 3 times a day,
then up to 200℥. & 4 times a day.

Improve taste. Take pure extract
before & after each dose.

Best diet for a person of this
kind. Acute Acute, or Soda.

but objectionable. Better treatment
100℥. of orange peel. Lime juice

also a good corrective & quantity
of each

For Phyria life protracted & pain
curd. esp^{ly} when taken early.
Of encephal symptoms in
cordis. Not much use if
soften & caries.

Objections - biliousness.
Respite 2 to 4 days - stop
again with small quantities.

In some determinations
blood & parts. & hemorrhage
results. if too much

Not over 1/2 oz at a dose.

For Laryngismus Stridulus -

For Diabetes. Diminishes both water
and sugar. skin softens & face
fuller.

Not to be used for diabetes -

In Cancer or

In Rheumatism old remedy - &

high joint - choice.

In Dietia. or. esp^{ly} old
broken down pt

Thursday, Feb. 10th 1876.

Colchicum from A. officinale =
"Meadow Saffron" - The active
principle is not in fruit etc.
is 3-lobed in utero small seeds
The bulb or corm is what is
used. Flowers after leaves fallen
off. The bulb is close to flower stalk.
Period of growth at in spring - no
change all summer except with
sudden rotting & swell to size of
a small chestnut, full size
in Aug: Lost it in June
preceding. Prof. Christen thinks
Sept. ^{the} time. As the young corm
forms the old diminish - the
corm is rounded ^{or coniform} - 2 skins outside
one thin & remains light, succulent
one thin & delicate. On under surface
is a disk from where the true roots
strike down - is 1 in \times $\frac{1}{2}$ in. soft
succulent, bitter taste & astringent changes

to send taste & much starchy -
Seldom used entire. Might
be mistaken for squills or onions
but these are in Caynes while
the colchicin is solid. Is found
in slices, which have been dried
at 75°. The outer or leathery
skin off. Slices known
one side rounded or 2
indentures. Latex = 2 years growth
one known root herb.

Abundant - written on colchicin
in 6th century - a monograph.

The seed of colchicin are
small, rounded, brown with a
detrimental tint on keeping. Signs
for mustard seed of bitter but
not pungent - 3 times by its than
digitalis seeds. Whole seed also
be used as the active principle is in
them over.

Colchicina = alkaloid of drying

balls or seeds in boiling alcohol.
Drain & add Mg. The ppt. is
distilled out with spirit & exptd
out. It is like paracetamol but
diff. by exptd. in boiling
paracetamol. c. dist. in
water, or in alcohol. c. in water
it is. Tests: NO_3^- & SO_3^{2-} (1) play
of color v. b. f. yellow. (2)
a yellow tint.

Units & gm salts. $\frac{1}{6}$ c. fr.
will destroy life of a cat, usually
dormant. + giving death. fr.
in an. vividly inflamed & blood
under it.

Civarin acid also in alduric
Acetic, usually as an acetate.
a small quantity used here.

In large is a decided pepsin
slowly digested or stops. Ejecta
solid or liquid like pea soup.
Dont much bile. very powerful
efft. a secret bile.

C. also produces vomiting
acts as a diet. sedative -
relaxes the arterial tension
Is a sedative to the fibrous
tissues & here it shows its
best eff. as in rheumatism
joint. The sedative eff.
does not depend on purg
vomiting & purg. may have
purg. eff. if we over purg.

In kidneys excretes urea.
So acts on tissues. Urin
then urine contains excess of
lithate clears of urine.

In uterus supps & induces
action said calm. Mountain
as abortion medicine.

Poisoning 1/2 dr. dried
in 24 hours poison. throat.
vomiting, purg. stools scarce
char. by mouth - same as above.
Edents get cold - voice fails.

Uremi supp. or bloody - of course
large pt. might not have chance
to vomit. Dr. Henderson on a
case in Edinburgh. pt. swam and
odd.

Artichoke = ^{soft alkali} MgO in water - Complan
2 op. capill. water.

Uses - Gout supp. = a specific.
Not suitable in weak old. &
eff. - lessens urtic. prur. in use.

Shd. never be used in any form
pt. - opt. fruit of herb, dist. &
mild saline aperient. & when
port established. use wine in 1/2

Dose. & after 15 min. dose every
2 hours. Oil or extract of Art.
and water in. also with a cast
leaves on & care with cold sick.

Give pt. etc. evening 2 83m.
of wine 2 or 3 a day after cure.

Also for rheumatism but
not in broken down pt. best in
vymis 83.

For rheumatic fever in by pills
& shifting about.

Some recommend large doses till
pains - stop to avoid this &
let it act as a febrile in system

Best as a dirt-remover. If
find it for rheumatism its effects
in urine stop & pain suddenly
give up giving it. or if present
usually - or pain.

For Inflammations especially. Dr. Williams
in 1850. Saw have had Rheumatism.
Structures for Cystitis & pyelitis.
& for prostate gland - for
tape worm.

Preparation - 1st - for pills & 2^d
seeds - 1st - 3rd - 7th - urine
slurry 4 oz slices dyed in 1 pint
of slurry, macerated for 2 weeks
Dose 20 to 40 in 2 or 3 days.
2^d - extract of 2 grains of pills in
weak acetic acid or vinegar.

(squill also the cog) const. to thick
covering. Caps well - dose 1/4 to
1/2 for 3 or 4 times a day. Lead in
antibiotic pill.

3^d Extract: juice, scrupled weeks 1/4 to

1/2 for. - water

(2^d) for seed. 2 1/2 oz seeds 47 part
of pint. Dose = 20 to 30 m.

Guyacum

for the = in N. Indies & S.
America - Wood of Guaiacum both kinds.
Bark also. The wood = lignum
vitae. Hard & compact. Used
for rulers. Little or no pith. No
concentric circles. Fibres disp. Each
has fibres running diagonally
& radial in by way.

Heart & ⁽²⁾ ribs or albumen 1 =

firm & dark (2) wh of yellow & soft.

Reason that the internal wood cuts
easier - if tried in a small long
piece of wood & also emery, 50
cuts - water to 20.

Guzaci Resin - Resin of Jugosa
 Dark resin comes out naturally or
 by dint incision - A cut up
 trunk & bark hole then cuts &
 place the end in fire & charcoal
 at the end dips out, & slide
 up wood & boil in water &
 common salt. Collected in cups
 as seen. 2 kind. Tear =
 olive shape, size of pea & weight.
 smooth & glossy, condenses
 bloom, greenish color.
 & the ant pyren. brittle
 shiny, variegate. in. fibers -
 broken has resin & glassy look.
 every vacuum & vents - bit
 of leaves wood & bark - an put
 in. Balsamic smell - set in
 fire & grease smell. both
 acid salts & salts - rubbed in
 water ^{but} or w/ mix. but not
 - with alk, in air & -

Cyano acid - sol. in alk. & some acids -
Sol. in HCl. Eff. on Chunks = glutin
deep blue - not on starch. Symp
arabic blue not upon trypan blue.
On raw pretreated blue - cannot do.
also fresh pps. Expt. slight green
color. Not aff. by O₂

Actin. Internally 'alteration' - diuretic
Diaphanite. (?) incand. & air pl
Kupf. - indoors - also on suodine.
Dryness, thin & unenfitte
to epizant - modif. alterus.

Chronic rheumatism in old
laying people. In cyphali-
one in my var. bent in 2 day
form - Ento into Comp. art.
Sarnapilla.

In menorrhoea & dismenorrhoea
easily when wk. membranes fresh.
Should be fine for 7 weeks.

See 1/2 cent 5/12 for some thought
& Bell - pretty - stress. 9
For skin disease.

Peppercorns 2 in lbs.
1/2 lb. green 1/2 lb. white &
white - 1/2 lb. of peppercorns - aromatic - sp
Luteo 1/2 lb. f. to Am & acetic
Dose 1/2 to 1 dr.

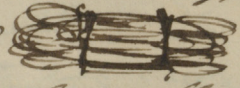
Friday, Feb. 11th 1876. Examⁿ
prevot

Monday, Feb. 14th 1876.

Sarsa = Sarsaparilla - Name
of S. America & N. Indies.

Bitter when fresh. Root =
(1) chaly & iron - medic -
(1) gr - only = good & amp - filla.
Make trans. section & pits
= 2 or 3 times wood gone
1/2 - times only wood gone
& purple black appear
Much stems - & her name
Decoction = tr. S. blue -
2^d divided into 3 sub-species
in Ind - fortune - it - best
& with Claca & amp - filla

18 in by



in bundles, double row
 2^d var = Brazilian - small
 seldom over 15 lbs. & roots unpaired
 reddish color in buds with
 strips of leather between rows -
 3^d = Honduras 2 1/2 feet bundles
 12 in. in diam. stems 1/4
 fig & brown color - the crown
 like part of the root gravel &
 also to increase weight -
 2^d var = Non heavily =
 reddish color - most val.
 in used. but this & wood
 from 3 times diam. of pet. 80,
 type with. Bird, shy - blue
 with stark. No notes etc.
 Crumminants little taste of
 1st Damaea Sarapruin.
 Tho' not found, but esp. the
 cross for Mosquito shore of
 S. Am. some sp. of Simulax =
officinalis var. artica

In bundles for 1 pot to 3 - fold
& bound of April two. Red
brown color - bitter - saline
and - no point of use -

Always clean & valued for
eye & ... for the root
like ... the fibrils ...

Leima Sarrapilla -

Bundle 2 1/2 to 3 lb -
folded ... & resemble
Lancea to Honduras ...

1570 in - drawn 2 colors
Brown & gave a grey - thick
part of root - adults -
3^d var - but

thin - folded - Sanwell root
Little of the active principle -

for Similar subarnea
Spilacium, or Sarrapilla -

Ex. H₅ - 0 - dried ... powder
= active principle - Heat to
let cool. ~~...~~
much ... fibrils of

Liquid & drachm - alcohol.
 In tannin small pills
 taste of it in eye more so
 in hot air & in S. etc. &
 vol. oil. A SO_2 (red), violet-
 yellow NO_2 or HCl & brown
 color - heated with HCl yellow
 Simulacrum is a neutral salt
 of potassium & sodium. with water
 clear - but gets in appearance
 the same as in doing $1/2$ &
 2 pts. do a proper full attention
 same eff. as in pills. Same
 & very - by dose.

Vol. oil in small quantities
 the oil is not of a good drop yet
 fine to odd flavor.

The plants will be a proper
 kind in isolated ^{forms too} & as plants
 eye & sup. plants. same color
 yellow aqueous. In parts = NO_2
 Analiz. 1 re. taste. no flavor. in water

of best most bitter. Follow
the scale the course & v. v.
Cut across & scale fly
out - I am a no dent
or all of I.

3^d (as above)

Actions - = tonic - Spasm. Ind.
given when can do no good
at all - so not necessary -

At one time supposed
that the more ~~the~~ purged
the body the more active
but the opp. is true so
emulacine is volatile & at
same time starts to extract.

In good cond. = good medi-
pt. purgative & scrupled = injur
& remove disease. Act on
the extreme tissues in analitis.

Uses. For syphilis in 2
or 3 y from purg. also do 4th
or 5th with the 1st & 2d
or with 3d -

For ulcerated sore throat.

For Chronic Exhaustive disease.

~~For~~ alone or with Q or S or C^o Oil.

For tubercular diathesis.

For Chronic Skin diseases with
the remedies.

For cough - if chronic with soft
sputa & elongate vocal cord with
N^o 3.

For Chronic live disease with
N^o 2 mucine and

For Rheumatism.

Preparation.

Decoct 2 g^{ss} - roots 5 oz.

root. in Oil 8 1/2 - Dose

2 to 4 oz. 3 times a day.

or Comp^d Decoⁿ of S. add.

Sanseparos r. add to simple

brandy. other things & strain

same dose. 1 to 2 wine glasses

Glycerum was its acty to retain

it cannot work the. & oil of

Sarcop^o from the. Alserian shell

2 lb liquor, sweet oil.

Fluid extract

Put root & $\frac{1}{2}$ of oil water.
Slice, bot ways, boil till
reduced to $\frac{1}{2}$ bulk is 7 parts
or of oil: 1.13. then add
1 part rect. spirit. This
make up. Dose add with
spage with the extract.

In summer extract
over of K.C.

Dose $\frac{1}{2}$ to 1 dr 2 or 3 times
a day -

Excretory Agents

By using blood & parts so that
fluid may be taken from it
In using this extract
... ..
... ..
... ..
... ..
... ..

1st Emetics = causing vomiting
indirectly by tickle or irritation of
2 classes - (1) immediate =
mediate 20 to 30 min. = direct
indirect. Reason, that some
sp. ~~are~~ on surface direct. as irritation
of stomach, or nerve. posterior
part of p. s. & 1st medulla.
2 - not in stomach but abroad to
blood & system generally & so affl.
the medulla of allanto for entire
part -

Direct = metallic as ferrous & Lead
Indirect = nuxvomica & opium & quinine
senna & - but the
an emetic. - co. Lactarum
wh. is absorbed -

Before vomiting some nausea =
sense of what coming, cold skin de.
lips purple - pulse small, muscular
force gone. white cornus reaction
eyes closed, pupils constricted.

Tuesday, Feb. 15th 1876.

Spicae, solid, ph in 1817 - also
salts faintly expt. Not very
sol. in water more if acidulated
the alkaloids
Diff^r for Morsum in water
+ being aff. of ~~84~~ iron & with
I give a diff. color.

to test. for made an old man
vomit $\frac{1}{2}$ 57 gr. = 1 scruple
found 10 gr. killed obj. day.
to $\frac{1}{2}$ 12 gr. & attention drawn
to. vomit $\frac{1}{6}$ a gr.

Spicame acid diff. for gallic
and by per salt of iron - h.,
acid test.

42 p.e. starts in diff.

Adulterations 2 other roots
1st striated & strychn. 2^d
undulated & along points.
vulgar effs.

Acteosus in $\frac{1}{8}$ to $\frac{1}{4}$ gr. = attention
vulgar discepta case.

put up in purgative pills.
good appetite up to it. In
some pts.

Effect of pouring about 200
reins intended. Also the same.
Goes off after copious expectorating
or the attack of suffocating
asthma - $\frac{1}{4}$ to 1 gr. Sp.
act as diuretic - better with
camphor.

As an expectorant in full doses
not known how but is in
the m. m.

Diminution of blood & Broussin
Dr. become relaxed.

On spinal cord ^{or} on medulla of
22 on lower part of do

& thus produces extreme
contraction. May thus stop uterine
hemorrhage.

In 15 grs is a narcotic -
5 to 20 grs. is an emetic - spray
safe & certain. 15 to 30 m. 5 grs.

Of our 500 lbs at 10 5/8
m. intrab. protracted
vomiting. It will now take
only or oatmeal.

Diffs for mucus, not eluti.
for mild surplus of nut
so violent.

Diffs for squills in not big
diarrhea.

Softs for children - no fatal
proton as tart emetic.

Uses for spasm in children.
Five during paroxysm. best
full dose as 10 to 20 grs.
fullly relieves spasm -

During intervals of seizure
grs 1/2 to 2 grs. with Adul. Cal.
or starch.

Leaves exp. br. & for br of
any degree. grs 10 to 20
produce nausea - also with
nut for. Cotanker with comp.
tr. op. &c.

For relaxⁿ of intestine. Best
by Indian method = 1 full
dose. no food for hours. then
with sugar & milk in ^{tea} spoon.
Taken in a dry way - 1 dose
will stop the drift. stop
blood in stools &c.
In large quantities in this disease
not a nausea or emetic.
It sleeps - well tolerated. It
permits the peristaltic action
of the intestine.
As a direct astringent but only
when it be injurious if given
2 or 3 grs. every 2 or 3 hrs. 1 gr.
dose on in 24 hrs & 1/2 grs.
of opium. 12 or 15 grs. & 1/2 grs.
for dysentery. 2 or 3 doses will
stop it. It has been found
freed it of castor oil.
In dyspepsia = loss of app. flatulency
or ^{pin} antientic in small doses, 5 or
10 grs 2 or 3 times a day -

Dr. M. scaptes what variety
when it has failed 5 m.
Doses of wine 3 times a day -
For Febrile & for
febrile diseases. For hemoptysis
not good but is - it is
2 or 3 grs doses. on out of the
Sp. in it comes.

As a counter-irritant
103 Sp. & some oil. together
& placed upon scap. brigs
out an eruption

Pupus - 1st Julis Sp.

Dose = 1 scruple for an.

$\frac{1}{4}$ for for dentin or.

$\frac{1}{8}$ for dyspepsia.

Dones powder = Sp. of 2

Kel 3 - 1 gr. Sp. of 1/2 4

10 of us.

5 or 75 grs. Dose -

Wine of wine and for 1/2
not so spirit - every for

14 days -

Dose = 40 m. for acute 1/2
or 3 for acute.

In acute cases low dose still
1/2 teaspoon full for under 1 year
for over 1 yr - simple
by 1/2 hour. In little is
retained & acts as narcotic.
Pt. must eat well & drink.

{ Do. to. squills ip. =
Pills.

Lozenges (see Phr.) if not given
of gum acacia. 1/13 m. ip
each lozenge.

Pills containing ip = complete emetic.
acacia etc. for early pulmonary
comp. & for

Squills = (Pilla, maritima
= Sen orion)

Hypocistis used it

Pthagoras. Modern name =

Full sized bulb = size of walnut

and in submerged plate covered
with wt. & red. skin - 2 kind of red.
Squills - Lutea soft fleshy -



Dried squills - Lilla ussica
such that it is firm - if not
partly decayed? decays
fruit in head. sub not
be moved nor eaten
{ minus. Dried = scales,
tough frag. head but not
break. thin layer distans.
bitter nauseous smell. exp.
pink. Under mic. made up
of 2 cells & some layers & they
form - in mts of them are
acicular crystals = ox. lime
8 or 10 pr. of all -
Leaves for fresh sample. Saturated
= active purple - if pure
is solid & wt. exp. sol. in
water 1 pr. killed a dog.
Operations - full on 10 pr.
under sun & exp. stoves
heat stoves pulse. Lower
heat. $\frac{1}{4}$ to 1 pr. = diuretic

if no other to see of Isa
dir. irritant. Multa Digitalis -
quills on organ life organ &
dy. on animal life.

Mentha as a diuretic. It
be used only for chronic cases.
of phlegm is to be used -
24 gr. powder for use. rough
pain in stomach & vomiting &
purging - Suppress urine.

Antidote - emergency vomiting.
For emesis in br. if expired
soon get put of. quills &
if vomit & - eyes in to.

For pneumonia croup after
acute symptoms passed with
cough -

In acute pneumonia for acute cough
with sp. wine. & H_2O , CO_2

With blue pill & dy. for
droopy & for hydrocephalus.

For hydrocephalus (locally) with
antidote & put in secretion.

Preparation - powder $\frac{1}{4}$ lb
m. seed & soft. resin.

By 23 Troy spays of glass
yellow color -

Acetic 595 $2\frac{1}{2}$ oz squills &
1 pint - resin. 20 m =
one.

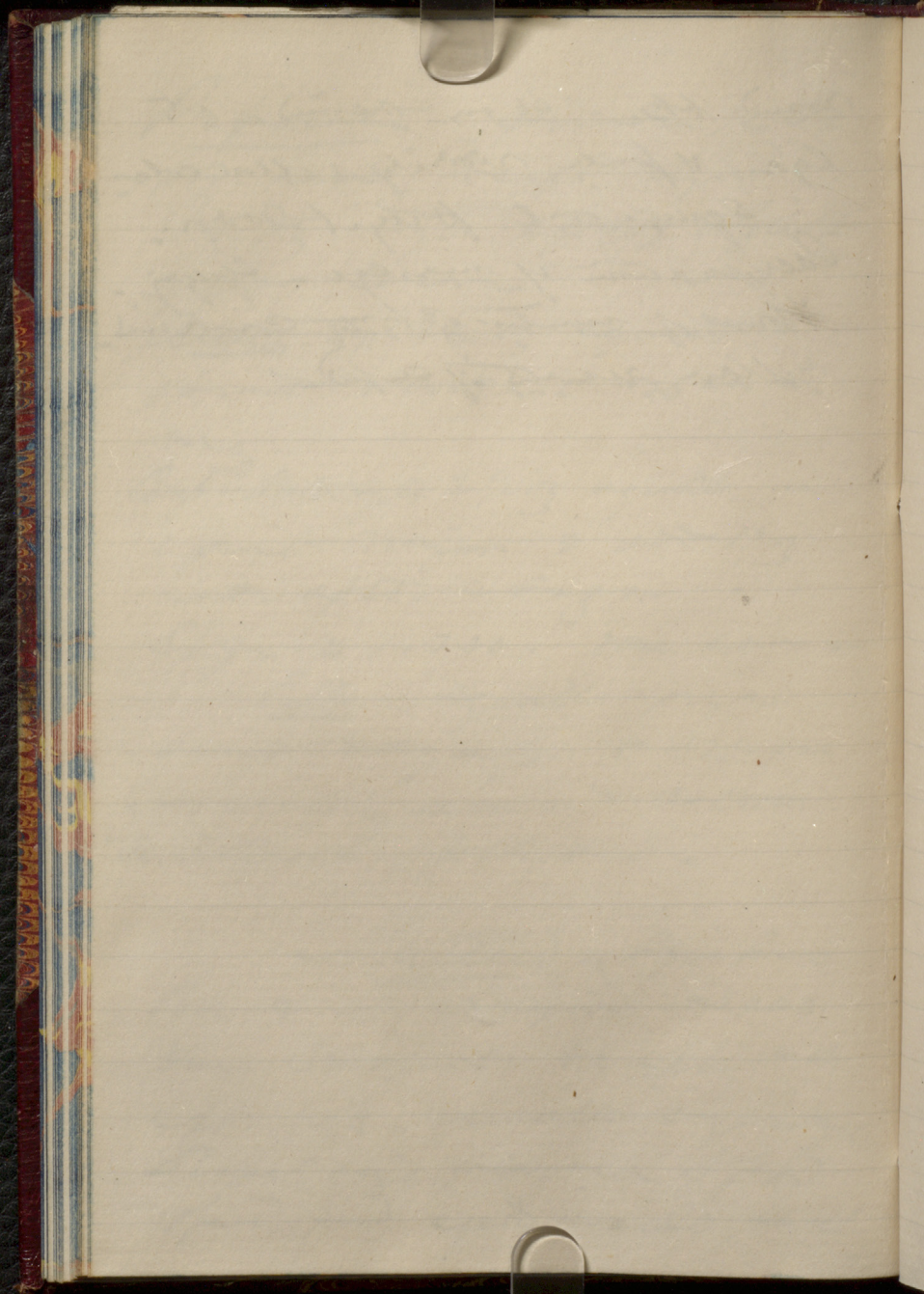
Comp^d Acetic 595 $2\frac{1}{2}$ oz squill in
1 pint - resin & add 1 lb
nut. soft. & sugar.

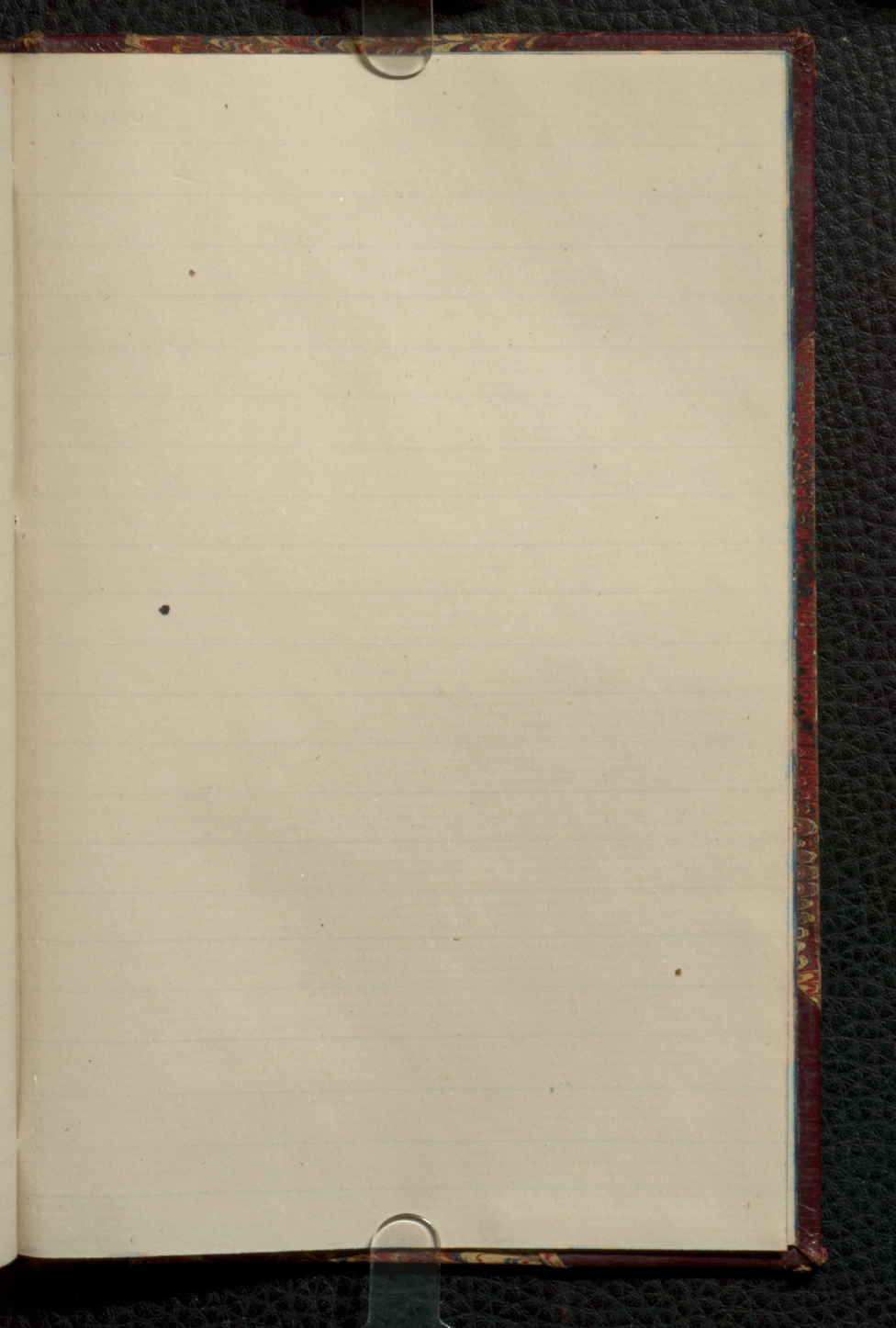
Spgr. = 1.380. dose same -

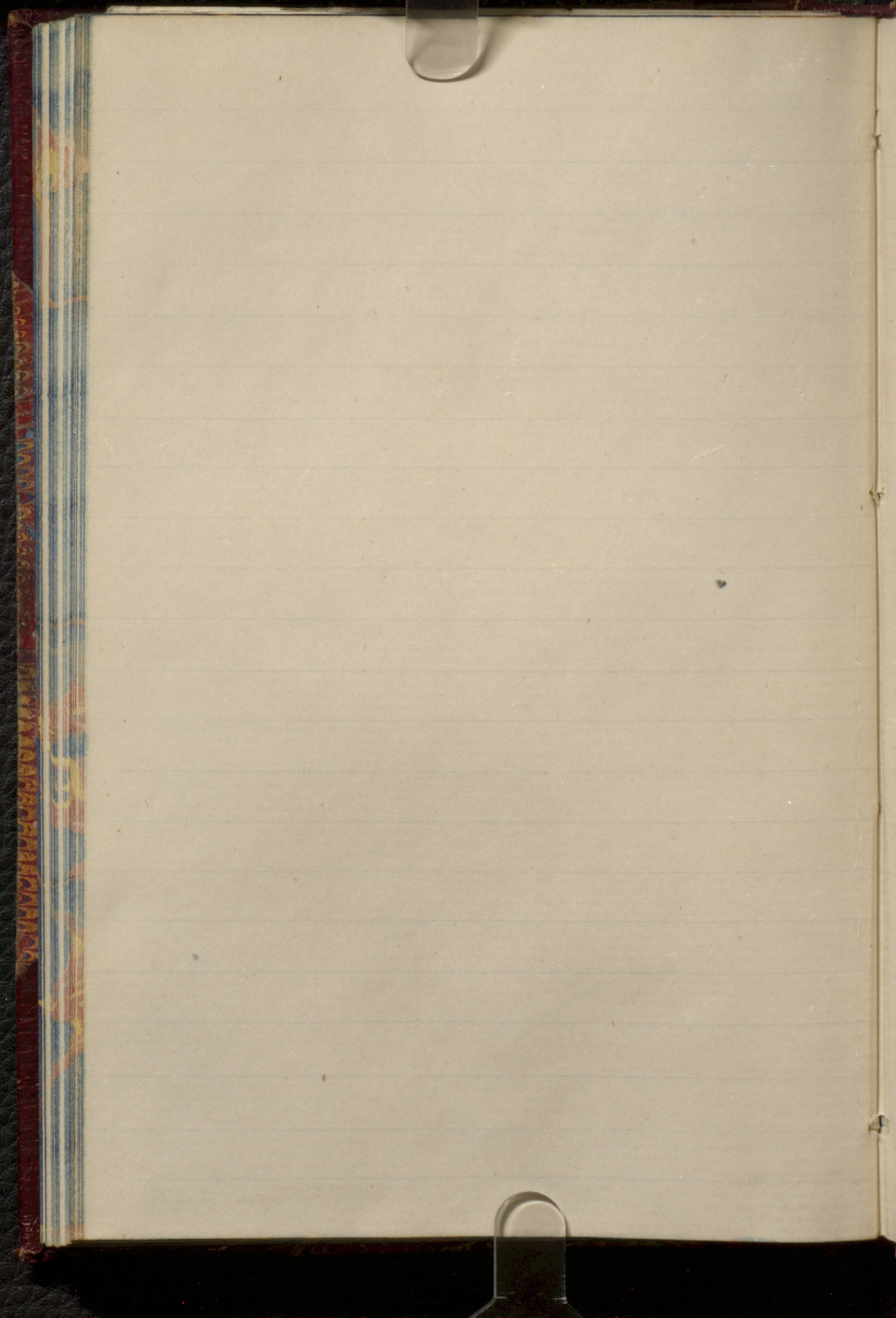
Pills - squills resin
soap & syrup. 5 675 for
for emphysema & asthma.
Ch. Antient. ptyosis.

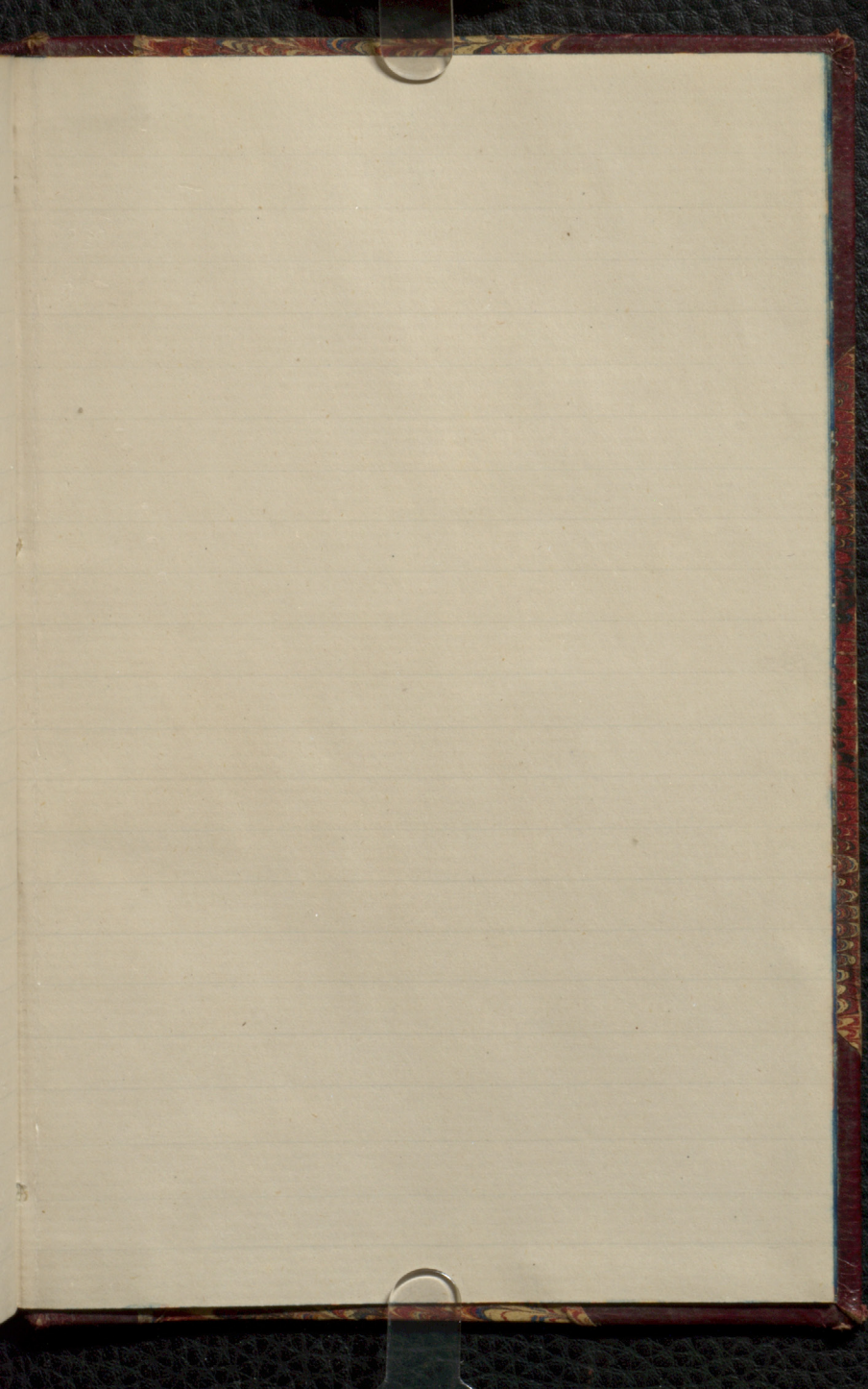
Mustard = (^{cc} Sinapis)
Roh & wt. = Sinapis & Saba
Fen. Cruciferae. bh. soft & wh.
soft. light. smaller can vary.
Shape, size, color of food
hard, hard seed inside, small

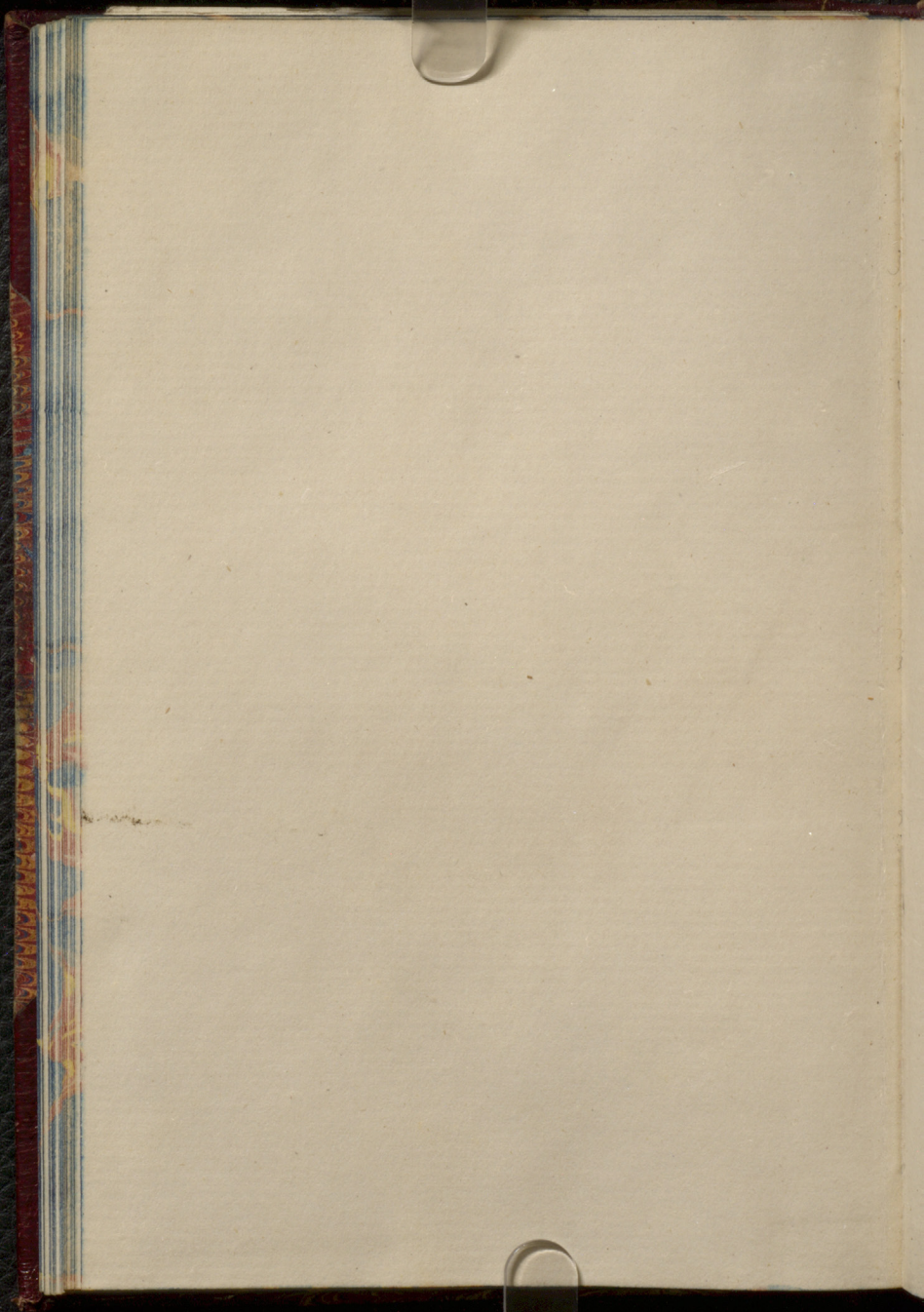
round bk. - bk. my. round. at
eye - & pale reddish yellow color.
Squeeze out purg. over.
"Caerophatum" if no eye - Squeeze.
Flour of mixture of both combined.
yellow results if sifted.











Acc. 612
v. 25

