

Wm. Esler

1873

Berlin

Handwritten scribbles

6 9 51

17
0 6 07
24/07

42

100
5
200
15

FROM
THE LIBRARY
OF
SIR WILLIAM OSLER, BART.
OXFORD

7666 !

4 6 6

Ym Oler

Vilma

1874

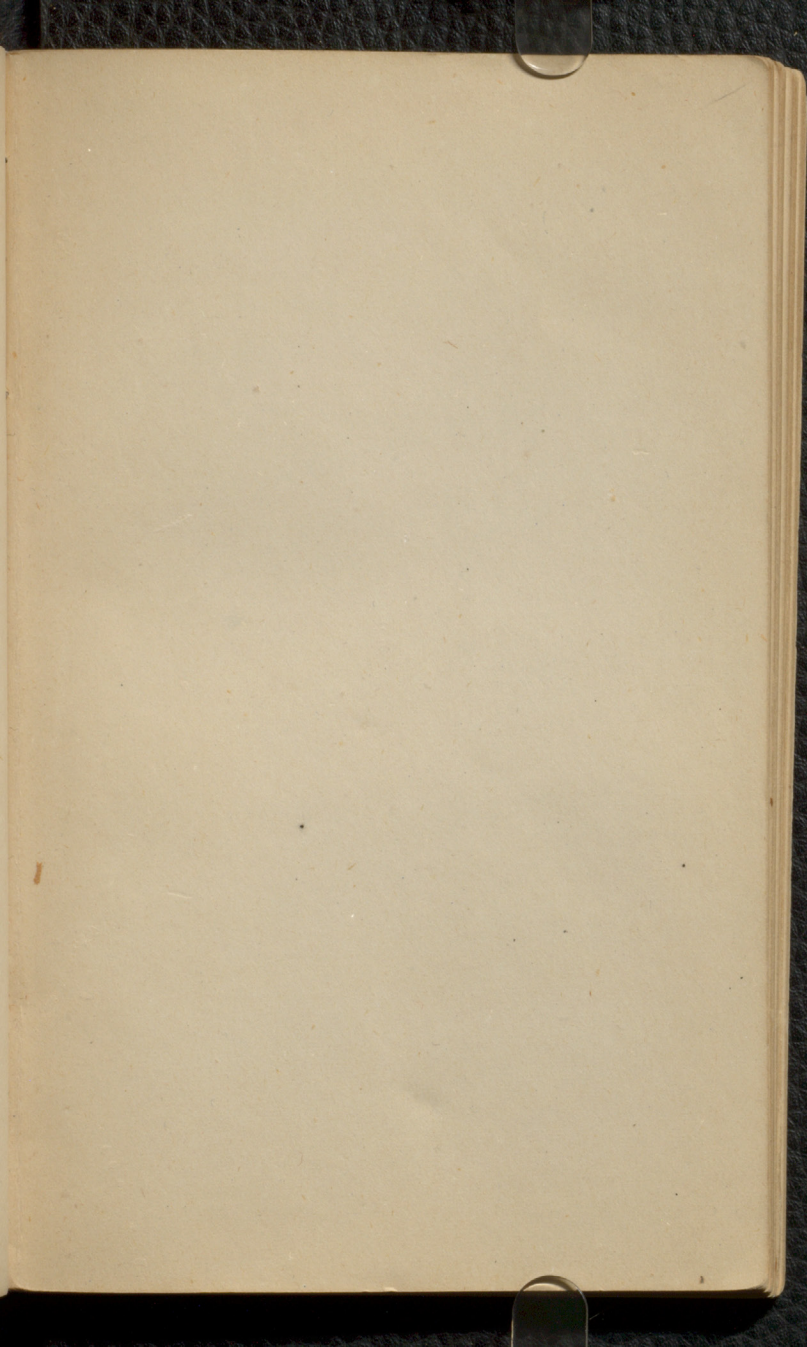
17 0 3 6 7 1 1
2 2 2 2 2

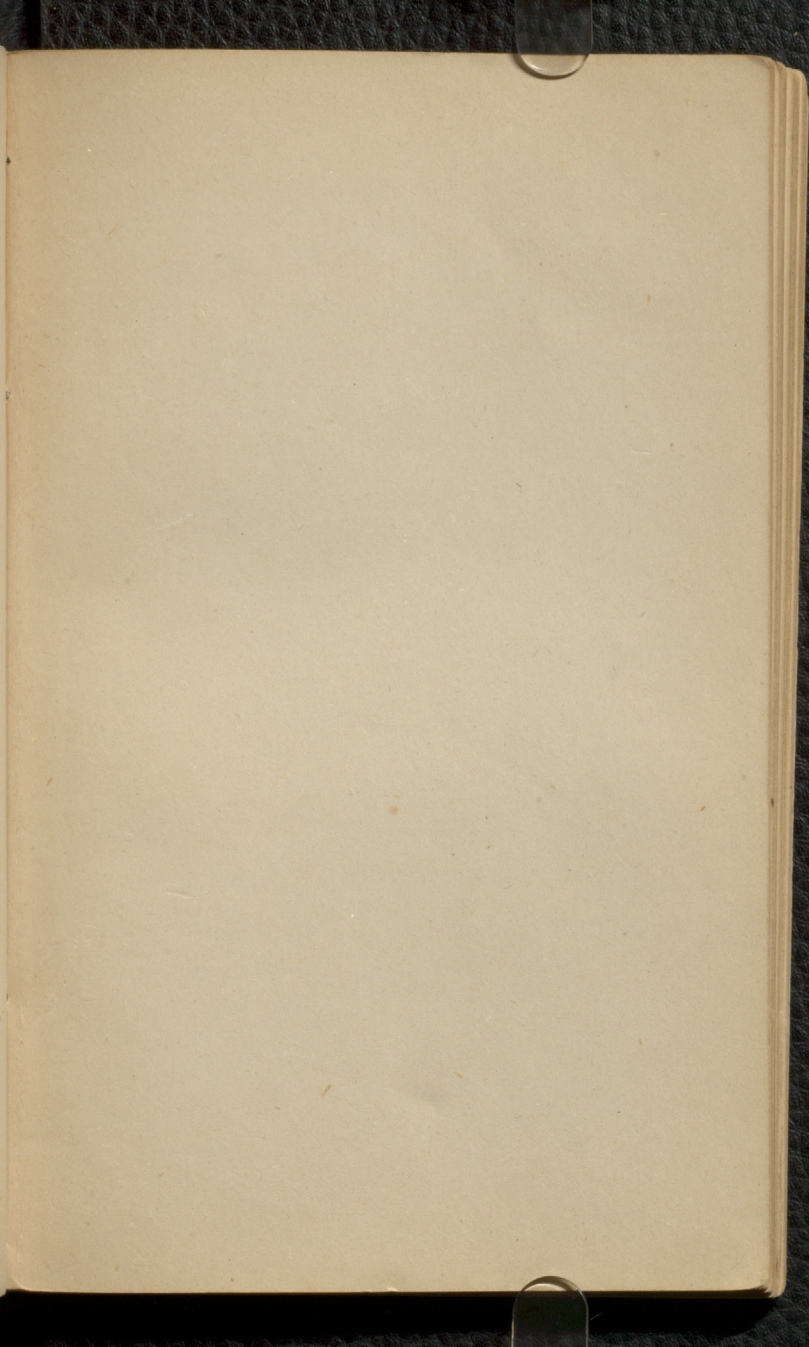
Continued to be checked in men, but they were
 have heavy to colored upon their skin
 A daily plague which, in the aggregate
 may average on the whole, the particular
 But as to women who came from the
 The great sufferings of their who could live
 of all the kind of diseases in the
 had the same on the mid night black
 as death production of them. I had seen in
 when I found them. These symptoms of the first

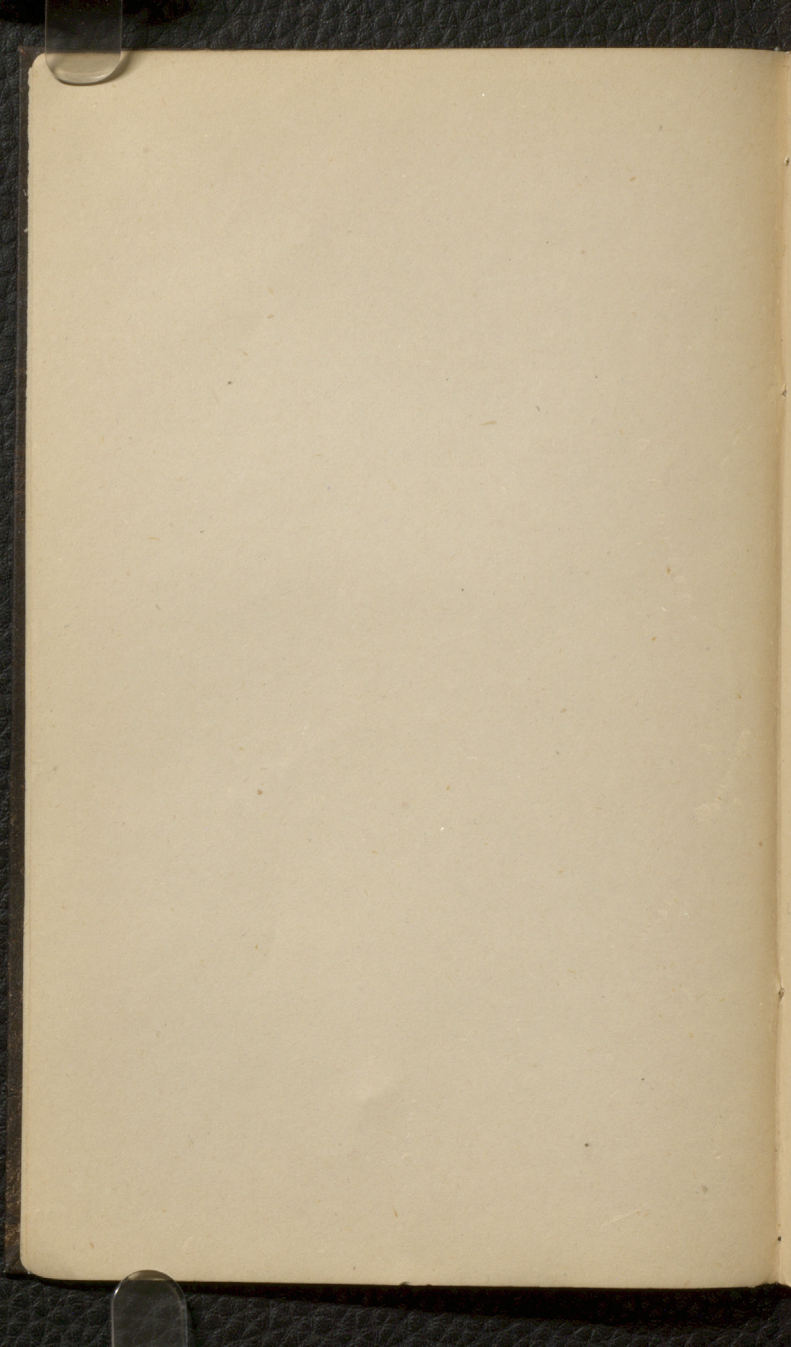
S. 9
 12 1/2
 12 1/2
 12 1/2

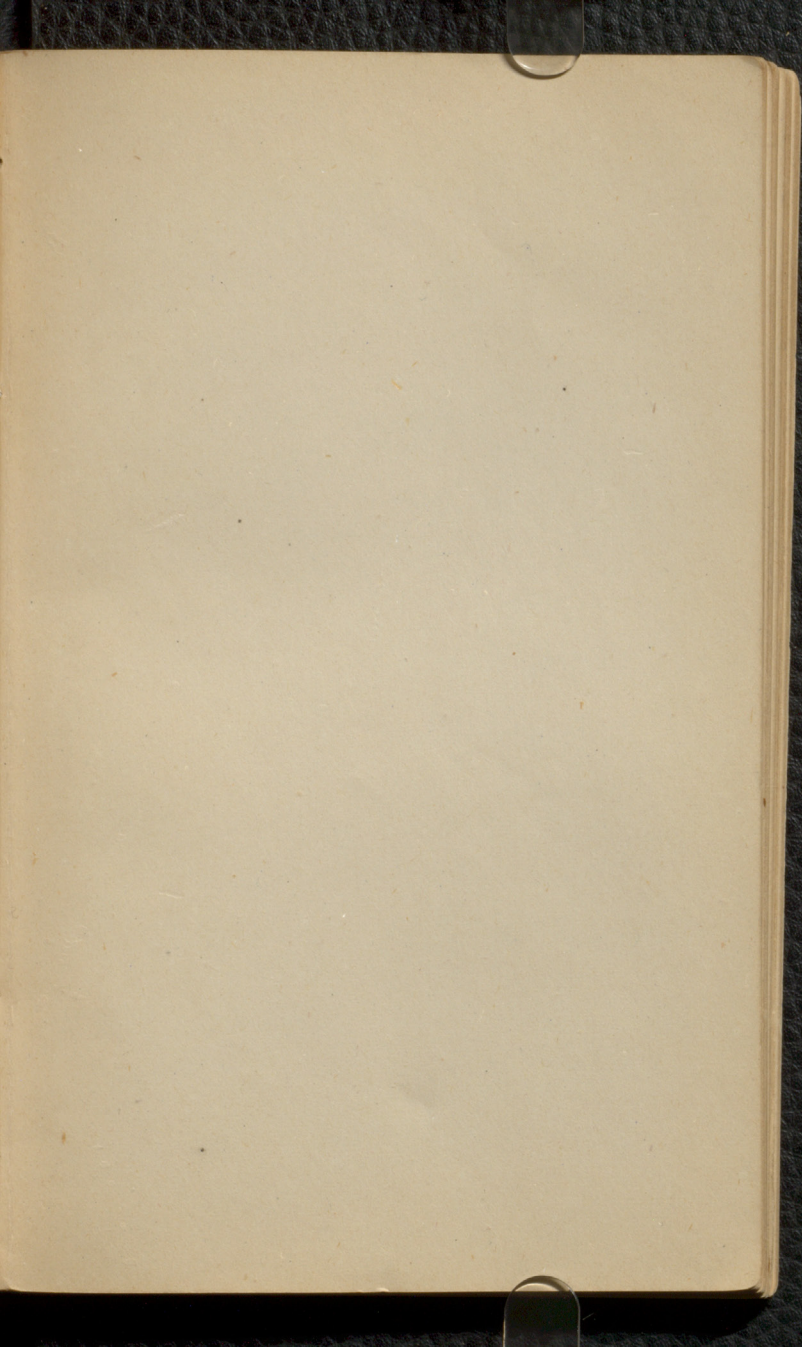
Olea malacca

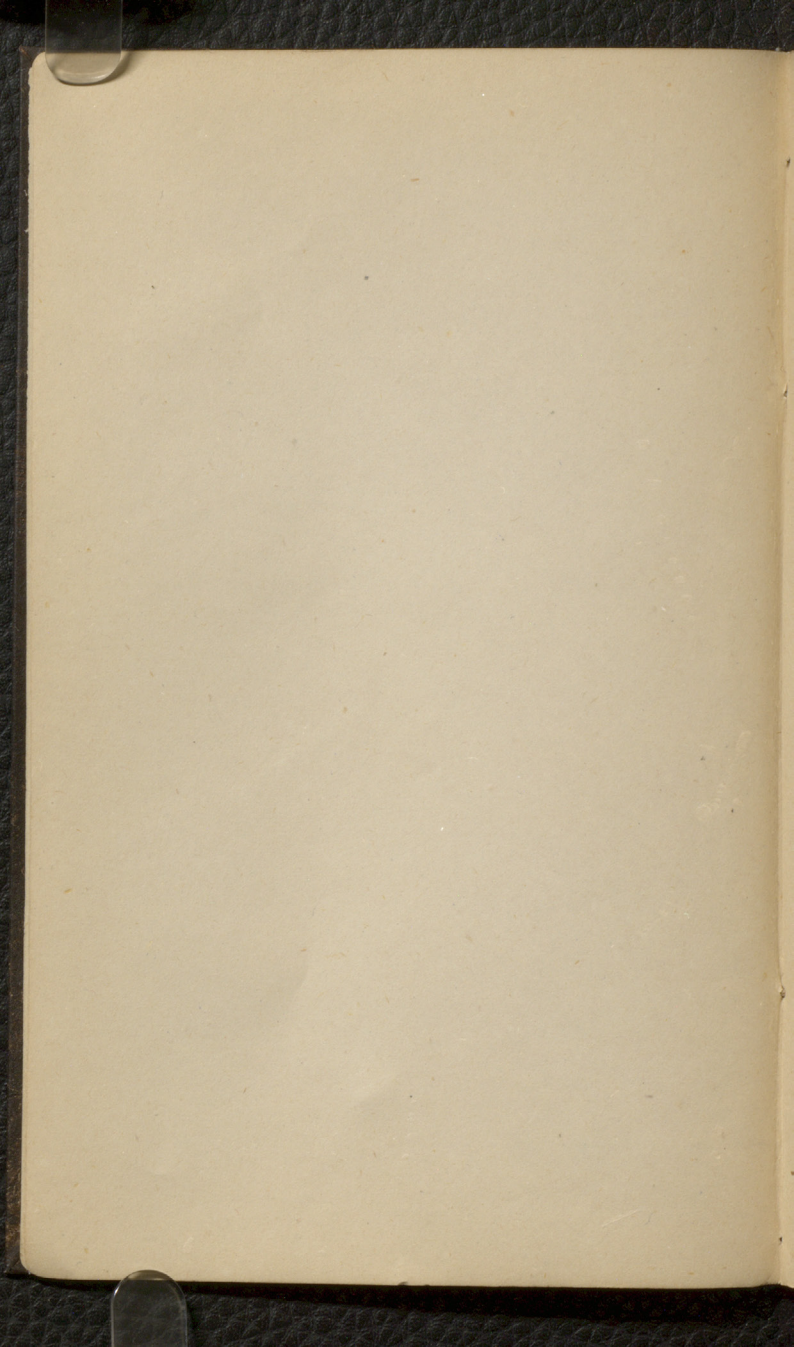
a woman in her tenth pregnancy. & it
began with regular 1 - month intervals
in the 4th month of her tenth pregnancy
the os. Mal. appeared

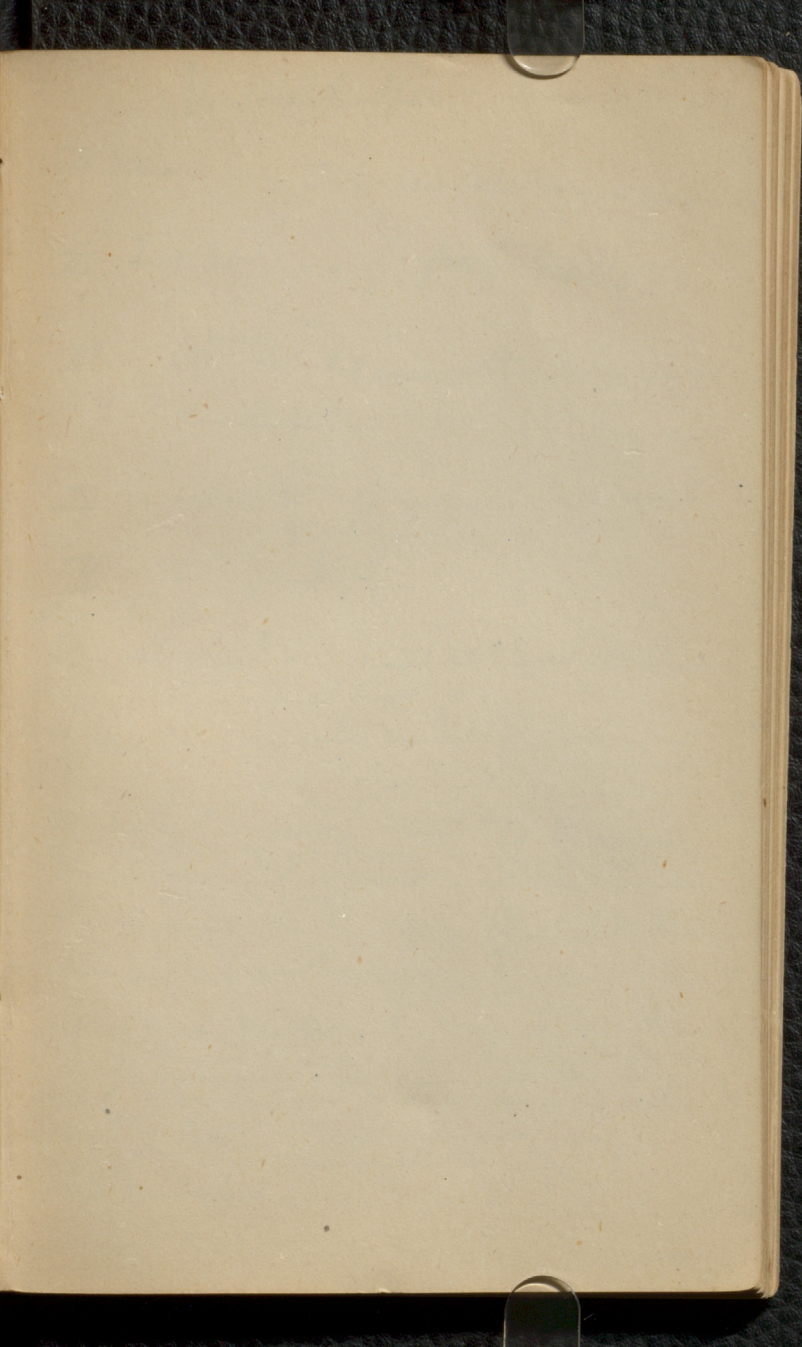


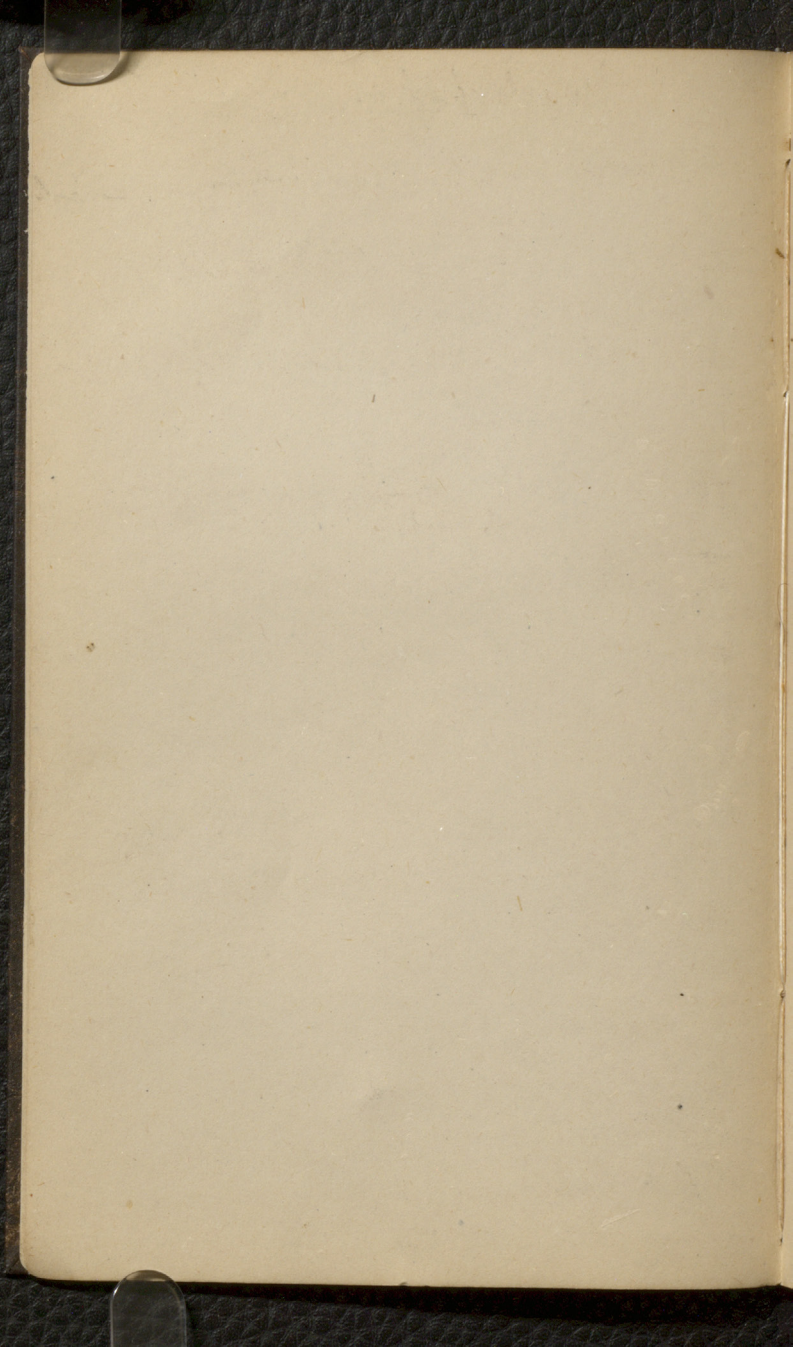












Wiederhoffer Jan 7th

I New born, till navel string is healed

II Till appear of first teeth

III ^{week} 28. - 28 month. till perfect
of 1st dentition

IV 2-3; to 17⁻⁸ years when second
dentition

V till puberty

Character of

Weak child small body. Weak

40-50 cc. is normal length

of length. Muscles small described

about 4 lb. under 10th ^{then adematous - inf abn} the perfect foot often small fontanelle

Treatment. Keep ^{and feed moderately} ^{well down} ^{29 1/2 - 2 oz} ^{room}
full small things. Must keep on breast & can
bark. regulated in medium warm water,
fear, & alone

when cannot suck. Give it milk through
tube. if no other way. To learn to drink

to & give the breast & squirt it up the nose
a good way the more with a spoon. within 3 days

Bed a basket a good as any or with the
mother better still. Move them often. use
passive movements regularly

Shall Callan. danger to these children. They
cannot die with them attached and a

when ch. came

with Boscawen's explanation
I have perhaps a good deal of trouble
after birth of ch. If the mother is
slyth or 7 when Sybil is just myd. external
a midwifery & parents
her child. Then an case where
the milk is so poor that I can-
not nourish the ch. in there
one a wet nurse.

health the food question & how much
wet nurse. best between 20 ^{over this and} 30. ^{some}
the good not under 20 not good
that has had one child at least
Boscawen. essential thing. I full growth
one other. vein taken. I feel the whole of
the breast. when poor. it must milk
spring out. even if do it as much as
many. I think that milk itself, may not be outside
is times. Milk. Parents differ. some
but great different in the way. I think in wet
and drawn away. either by hand. This
makes no difference to the strong ch.
but a weak one must a can. I have
heard. A case drawn back for a weak child
shully I doubt at me in both breasts. for the
milk must be good & proper well
under 3 months is not sufficient with-
one breast. It is a curious eye that will
enough in breast. Should not be over 2 months
of progress for child
let the wet nurse use a deal of which she
has been accustomed. she has milk
may be diminished

The age of the am. as am. is important
a new born ch. with 3 months am. year of
syphilis or nearly always should cover up
the age of child. age of ch. am. am. not count

Catarrh of the Uterus

When the 1st is the period gets some
say no matter when that. Child usually
becomes unwell, & but not so is. The
milk a little changed. The excreta is
loosened. When in the 1st time gets the
period ch gets colic appearance.

2^d period. then app. entire longer. soon
the 3rd or 4th the colic not longer seen
with the arrival of the period but con-
tinues for 2-3 days. gets pale &
less strong. when 1st 6-7 months old.
the 1st period comes then stop the
milk. but if 2-3 months old stop.

stop the 1st when the 2^d period
comes. Another case. Galactaria
an abscess of the milk. I heard that
in the breast. When a 1st has moved
a 1st. & then a new born one affl-
cured itself. then it does not milk
be as the other does & a strong milk
place must get a strong ch's from
the breast. St. Bellard. 71 A.D. 9
salin. pla on the breast, an dimer
into of the breast. It produces

paralysis of the arms & the breast
take care of the ch & do not apply it to the
breast when this applies in or

If a parient already knows no matter of the
ch. but if ulcers in the center not
chapped nipples when by bad smell take
away the child. less, use an ~~any~~ band
which perfects the nipple
when ^{about} W. N. ended. little away.

of any illness as fever, as acute
Garden Calamity. Must draw off the milk
Medicines must be used carefully, as they
influence the H. as Hg. & H. all are ~~used~~
in the milk.

when one sees that the H. not perfectly
nourished is then furnished the H. with a
good nutriment.

H. 2 months old, fed with Scher ⁱⁿ milk. Every
2 hours - found colic. Give the Scher milk
Acid: Water dil. part IV

The acid in the part given is not believed to
be as much important as the paper

IV part July cause in 37 Hg. Give Lactose
pale before drinking.

Longicauda common with. Natche
Natche much cold water every 3 hours
on the head especially
39. ^{"gull" mo above} *Inc. coffee*.

Also note that one by one feed ^{Chadron}
^{water} *Chadron* takes too much food get pale
get too full with 3-4 m. get Natche
Dyspepsia appear follow due to much drinks
1-2 times in the day & 2 in the night in morning
when 14 days old. when 2 month old. ¹⁻²
time enough. Under 1 month 2 in the night
after that 1 in night & 1-2 times in day
5-6 in 24 hrs for a child 2-3 month
old. when shall we see

1st on the chest 2 on the mother or her 3. ^{1st} *Chadron*
when it is so far ^{growing & strong} that I can feed for itself
about 1/2 ^{has} inches. ^{CC} ^{the} ² *Chadron*
at 9 months
it is Natche then after 10-12 months
when the volume begins to run out of the
apple. from the it is a sign of ability to take
the nourishment.

2 depends on the W. N or Natche. when from ^{can}
the milk. gives. then if it will nourish.
^{about 7-8 months old}
when it

(3) Time of year. I & 7. good. ^{can} when

May. bad. the day previous to bad.
Green food diff to get for ^{the} cows or fiddle farts
the dream of B. are more prevalent than
in the change of air. dam calum

mai good. Cows get fresh food - green
June good

July. bad. great heat. dam calum
milk. is apt to be affected by the heat. & get
sour.

August. same

Sept. Oct. . Nov. . Dec. good months

Do it under the old Act ^{as} said

it goes good in some cases. ^{but} after being
dubious. Abolition theory. not good
chose apt to come in

Never do it. ^{the child} 8-9 months old. ^{ed. setting} ²² get rid
suddenly. It should 4-6 weeks continue
since the same month continue in this
period. 1/2 month old. before born

1 B. month. Nourishment. simple soup
Hunt. beef. Sugar & salt is not pleasant
after 2-3 days begin with milk. with
new milk. 4 mat B. 1 lb. sup. 2 mat
When a mat suffer 2-3 mat & by suffer new
5 mat then the milk is ripe for drinking

Thrush. This is healthy ch. derangement
May 23, water in a milk in which one not
before 2-4

Henna umbellata and henna alba

Syphilis. Head

ing. 2oz

ing. Cures ⁱⁿ 10 gr. 3 i fat

Crops.

Lactic acid. subphosphate 10 gr

ch. but Habi

old water applications

Artific. Nourishment

when in milk teeth. Sweet & great can

Butter can. sp. grav. the thickness. Taste

a long while. 60. 100. out of this 5 of butter
have. dfl. standing 24 hours

sp. grav. depends on Casein. Reaction weak
alkaline.

Butter in milk in 1 part of day, 2 part
later about 5 per cent. Casein more at latter
part of day. Cows in the great diff. Casein

thicker sugar. Milk sugar but. as Candy
sugar. As a milk sugar can be. diluted
it. in cur 38% lactic 14

Thin the milk. An. milk morning
cooks, always. a new born child 1/2 liter
2 pt. water 4 tabl water & take milk
sugar & put the milk & the sugar water
in 1 month. 1 quart milk is enough

Amount. often used

Sometimes NaCl. used after thinning the milk
with cereal. used also

Syrup Arabic med. (7 alden) for milk. The
cure outwards also the milk & come in contact
with air. & fresh the course.

It is not alkaline soda. not good

Fetig. crisp. much enough but when good

it is the best form. yet it must carefully be made
the 4 best is good too

Cereal methods. Hers.

Hers. Little milk. after 12 hours. Laundry
little of the cereal. kept sitting with 2 pt
of sugar

Antife nonchment. under.

(Mouté) . . 7/4/74

Treatment of incontinence from
(arising from weakness of the urethral
muscles) with electricity.
Place one pole up the rectum in contact
with the prostatic gland. the other in the
vagina of the perineum. Pass the current for
at least five minutes. Sometimes only
four or five applications needed to cure
obstinate cases which have resisted
other means of treatment.

Heine does not recommend chloro-
form or Potassium (or salts) but advises
the use of Belladonna sometimes for
Anisminum.

Ang. Syphilis 2. 10 days old.

Sy. 7th day. for a 14 day old. 11th day.

Intestinal diseases
Study the stools

Dyspepsia a defec. of. mass with full
stool unlike infant. Infant changed
with the above unchanged. Unlike
color infant white other yellow.
Inn. smell and reaction & propor-
tion fluid & solid is about equal
mucous also unchanged or coagulum
milk. a few apple color. flatulent
chry from milk m. m. appetite & exer-
cise. & No fever.

What the cause? find this out.
we consider the ch as cause when too
flesh in world comes. & even if little
a young man. yet the but can if ch is not
fit for digestion. Slight better for work
& mouth with develop of intestine
so prognosis is good. Care in
home. stool is good. often
too much table. and dyspepsia comes
on. When stom. of newborn ch. is & acc
stomach ^{found} not fully developed. as an

not part of milk is not dry
as not enough paper is used
Came in the air. As the quantity
given when was can in cloth then
it be too much

3 cases, usually, as cur milk
with cury of O_2 is sufficient. or dent
Diarrhoea. as O_2 can cal or as
entirely. or the O_2 is ^{very} hard
Can use the cur. more.

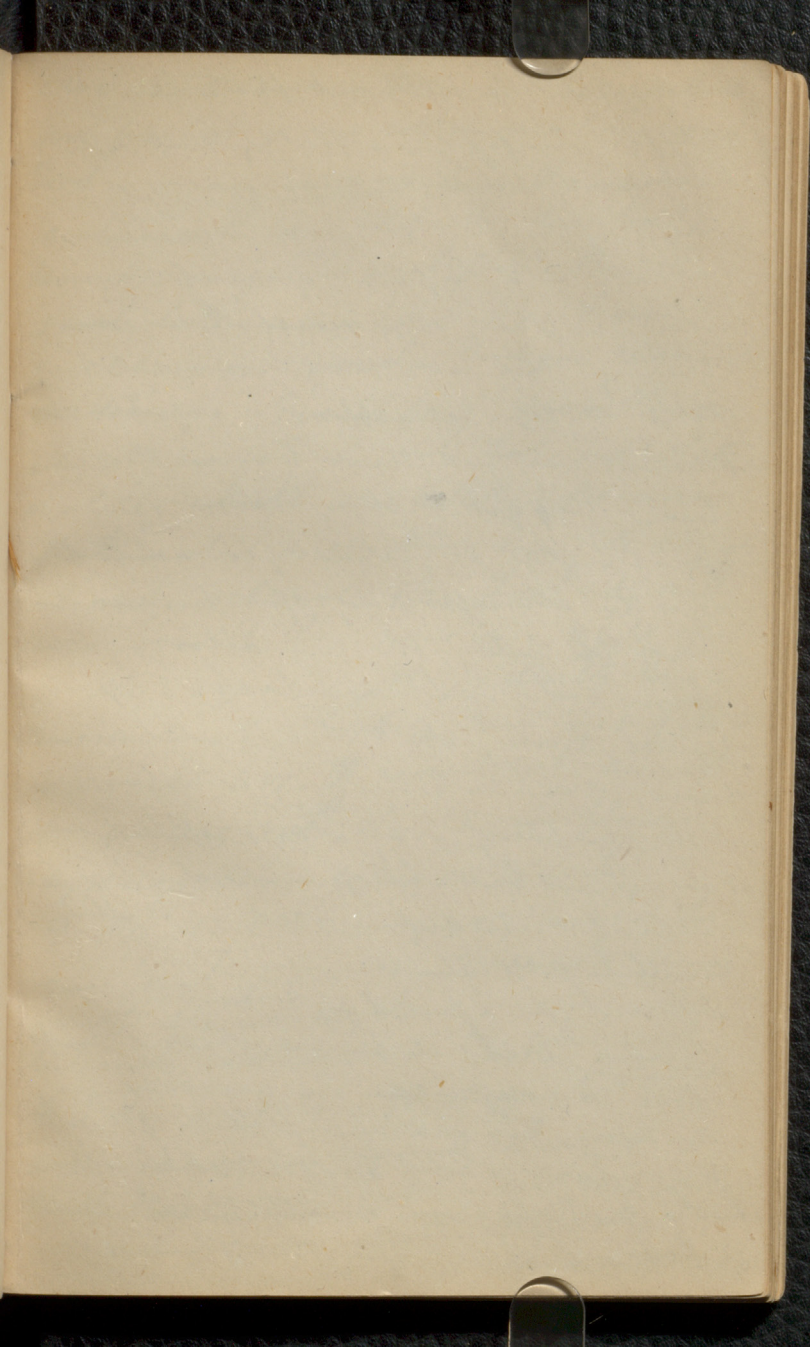
Medicaments. O_2 , intimate, & induce
Morbidity. Paper. O_2 acid. other impure
of two little paper with given paper
the O_2 of paper is sufficient for a dose of child
2 weeks. as drinks before drinking
the acid. Acid bath. or mixture
of paper fails. As the child for the
duration. Before the heart. paper
after the child. 6 galls. Deb. of paper
is seldom. The can of O_2 is a deficiency
of acid. As paper and air with this
we add the acid to the O_2
mixture. decomposition. One may use
5 lb.

Since June no favor program
is to be given. which begins to feed
is favorable. The imbric. some sample
them go. Harbony. of early month
with a brand. Spin 1 year as an
milk, milk, cupre. within some full
others. Chief one of treatment in most
death. Medicines not much to do. Give closing
coughs. then leprosy, warts, flesh, scar
in single cases. good. in other. see with
sinks so the circle round. by them
about 10 days each. Found the cure
had. male had milk. Can drink milk
in cold water. Dream a day water &
aluminum. Medicines. aches. & others
he began. with 1/2 specifice dose of spec
all vomiting. no good. of 1/2 a day
ever before. All. a ch. milk. Cal. give
Calumbos. Sex. or Pub. Cal. 1/2 gr. with a
not of spec. either Pub. Dose. or 4 + of spec
New ton ch. & in 6 weeks. no return
a normal. a ch. in a yr. not in the
1/2 per day. of Pub. day 1 month 1/2 gr of
P.D. over 1/2 yr. a 1/2 gr of P.D. per die
was again 11 gr P. die. 7 mil. of spec
under 1/2 gr. 1 D. of spec. over 1/2 yr
11 gr. per die. 1/2 gr. of D. per

has can control the repetition in
a child. $\frac{1}{2}$ g m to dose, as a good
way of P. Dose. Do not give them
very at a time. of a black child
one, with anti. col. some. & some
bath. Outer methods. Keep a uniform
temperature. Plaster used of older
Physic. Cold water treatment is
good.

Intestis. the follicular form

begins as such, or as a Dysentery. a
compound come in Schleiden's 74th case
found P. m. large under envelope. 20 m.
of short time. at 10 m. m. of longer whole
large intestine. Acute & chronic forms
Stools found to be, rather glass
color greenish white, or bloody pink
surface of more Dysentery. Case also
unchanged also, come in ch. which
has been living in a hospital, even then
get better, but in stool. It is frequent.
20-30 years. It is small. Stools often
very, one time, a healthy looking one
abundant. a typical dry enteric. Most
collected several stools. Pain at stool



of the stomach without flatulence
and epinephrine is used. belly not open
but often distended. Further symptoms
begin with chill at fever - usually
in evening or a dyspepsia. often of long
duration no fever or exacerbate in morning
& evening. They are pale. emaciated
notice dry lips & chapped or ragged
lips. sometimes a pair of more charac-
teristic. They get very thin. often taken
from the intestine. a virus & chyle is stopped
hence the abstinence. If a long un-
timed ch. enters one may allow
from that it will take the ch. 8-9
years to move, & then health can-
dider, a disease comes in sometimes
in the periphery, sing a big distended
Pung. should be bad when fever is bad or begin
continues. bad when reaction is at the
beginning or in the end. Continues in
different for a few days to years.
Therapeutic Diet. with use of feeding
alone or coffee can do wonders, but
the best. this may when fever is present
for 3 days & cold drinks soda water
later give best food & water. Small quantities
of food and drink. Then raw flesh 1/2 lb

1. food. 2-3 times a day. But a beef steak
fine for fat: & give either on a little bread
Good in many cases when it can be
continued long. slope the chamber(?)
Must change the diet often. Milk is
good. Later not at first or 20 min.
milk is not good. Don't give too much
medicine. Give at first usually a
slight purgative with Cal. but of the
a older child 6 gr of R. Rad. Rhubarb
Naturalist is chylites. Simple chylites
at first. apleuric sling stool. If not
succeed with the new one. 1 gr of
for chyl. 1 gr 11 gr of chylites. Can
use codon 5. 7-6 gr 7 gr 312 of fluid
& my cts 303. If seven ent. almost
purge in Arg. int. chylites in glass
syringe. 1 chyl. 1-2 gr Arg. int.
Fe Cl. 1-2-3-4. give in chyl
over great pain. with water. Can
with chylite chylites
Internal. arduous or of the. one
Pal Do in begins. 1 gr for 4 gr 12 chyl
with 7 min or 2 min 7 min.
with 7 min. 7 min. 7 min. 7 min.
7 min. 7 min. 7 min. 7 min.
7 min. 7 min. 7 min. 7 min.

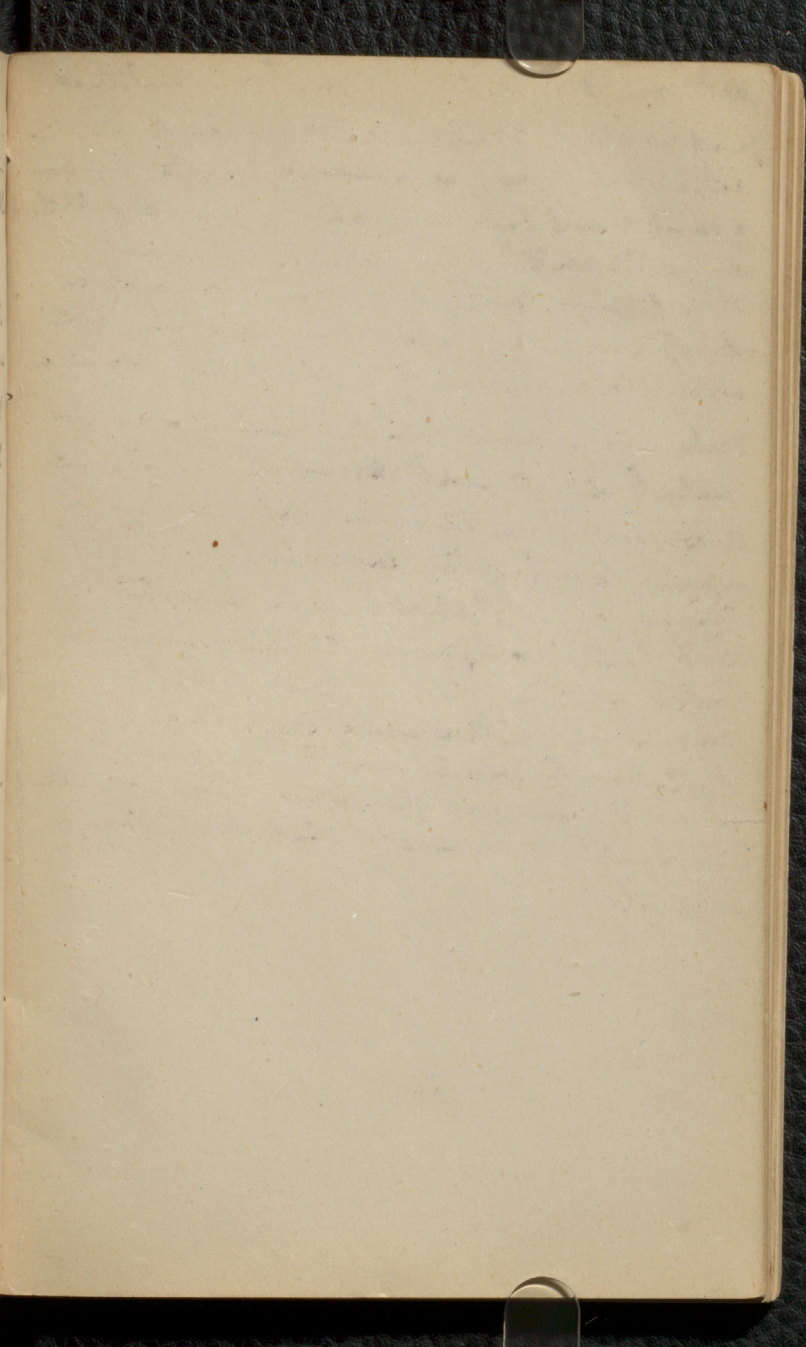
older than 50. often $\frac{1}{2}$ - $\frac{1}{4}$ gr per dose
formerly. any nit are much, now
less of use. $\frac{1}{2}$ - $\frac{1}{4}$ gr per die
In these cases also. But is common
in infants is present. Kaffir.
Cold water treatment is good in infantile
cholera on & a. bath & rubbing
Change of air is wonderful. An
imp factor the awareness with the by death
an aden poisoning, the the leucoid
circul in the brain. This is very common
in looks for the when aden comes
in & aden of eyelids in face, & here
in begin. then the brain. now pulse
slow pulse. then in sleep. should
usually the druggies. symptoms
very pulse. & a little men. tubercle
common. wide pulse. sensitive touch
coma & convulsions. Return then &
men but little I don't. but the Hering
one does an act & a chow from
Therapies. stop the drainage. & a chow
method of pain in $\frac{1}{2}$ gralt, i. as the
age. per dose. Stimulant. Now less
best. wine. Cognac. Camphor. Ether.

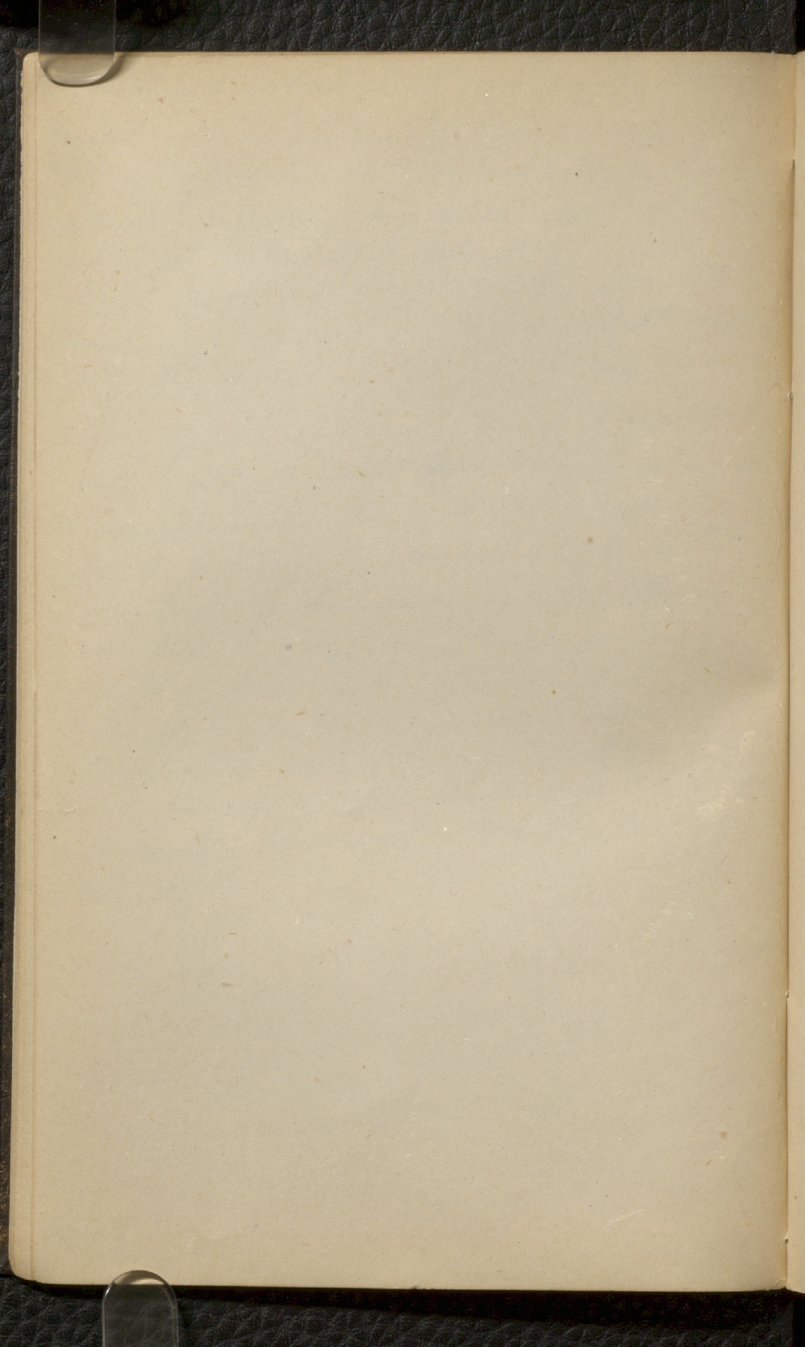
Sulph. & Az. Cum. being given & 2 gills
they coughs

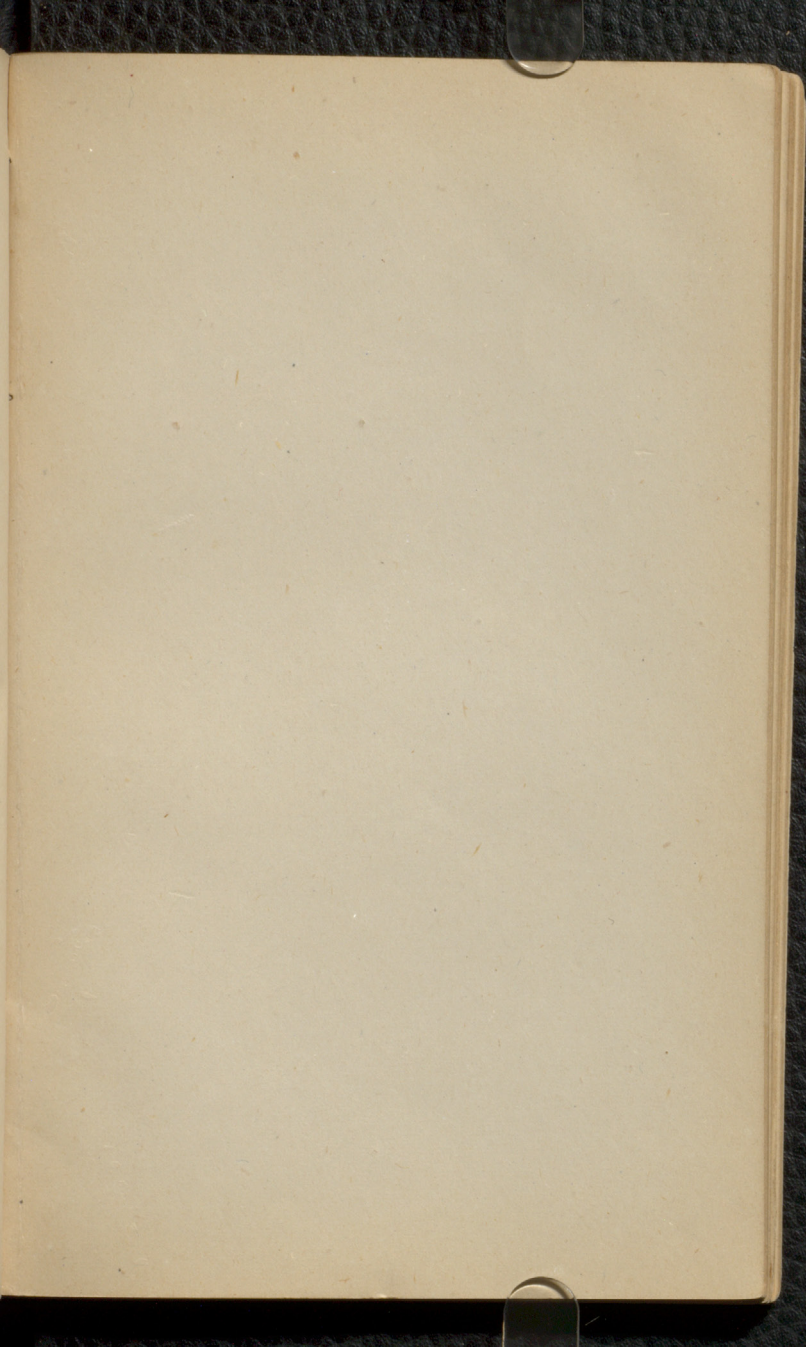
Mortalli an as an ul char & not
fleets over the whole body, as in
colarhal eruption it is contagious.
The only material is in the mucous & ad-
hesive from the various membranes. Incubated
14-15 days. Hazard to separate children
unless it is done at the moment of or
before the colarhal comes out.

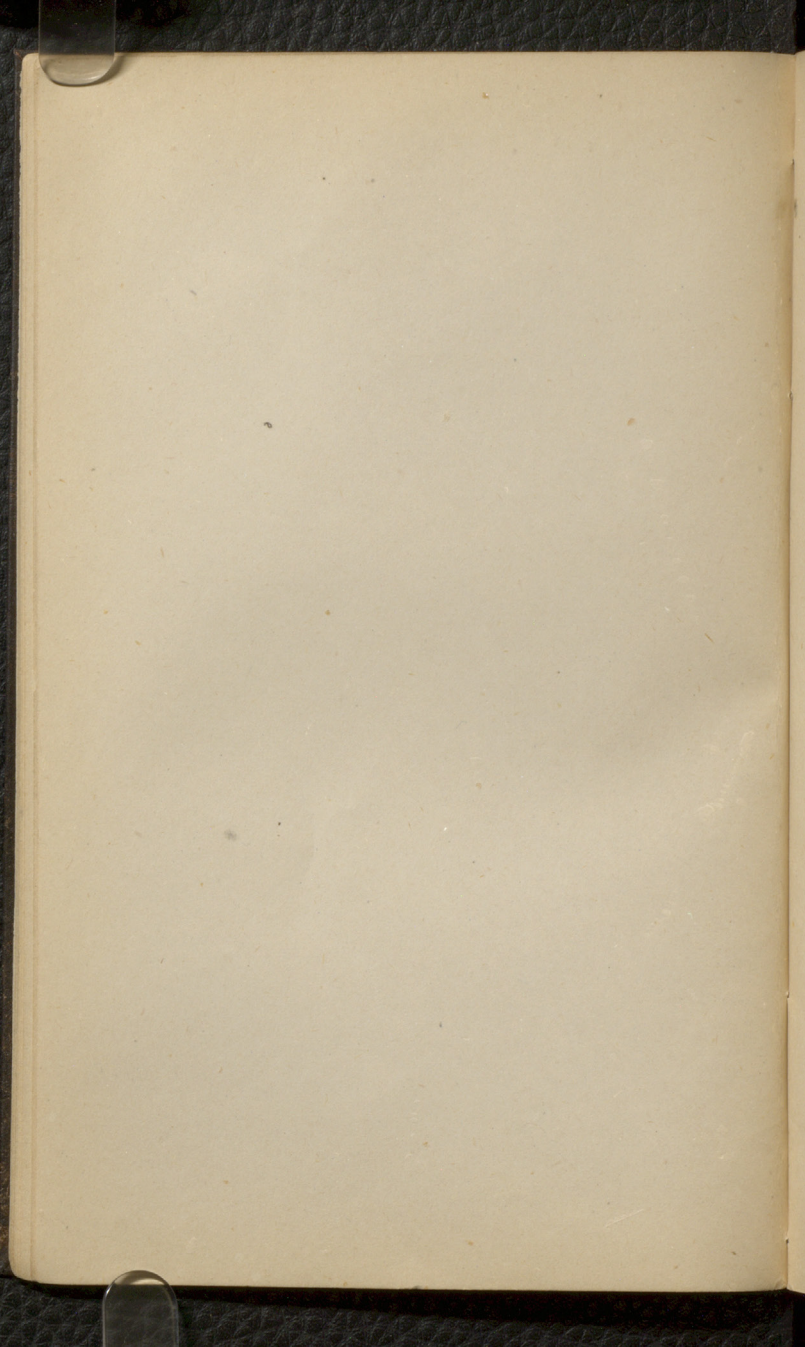
Symptoms. Prodromal, colarhal appears
first, cough, nose, pharynx, & hoarse-
ness 1-4 days perhaps most important
is the colarhal & the cough a mean cough
a laryngeal cough. Talle care not to mis-
take this for croup. Many get even a
slender glangore in this, or an adenia
in Scl. Eruption. Fever increases. Small
red spots on forehead & face. Then to
neck & breast in 3 days the whole body is covered
in same way disappear the small face first.
The permanent flesh remain often more or less
marked. Abschuppung comes in definitely
in the eruption & ends about the 12. days
when the colarhal is long carbon & a couple only
for the disease last 6 weeks usually a 14 day
disease. An important point is that
sound health spots remain between the general
at scall. This is a point of distinction

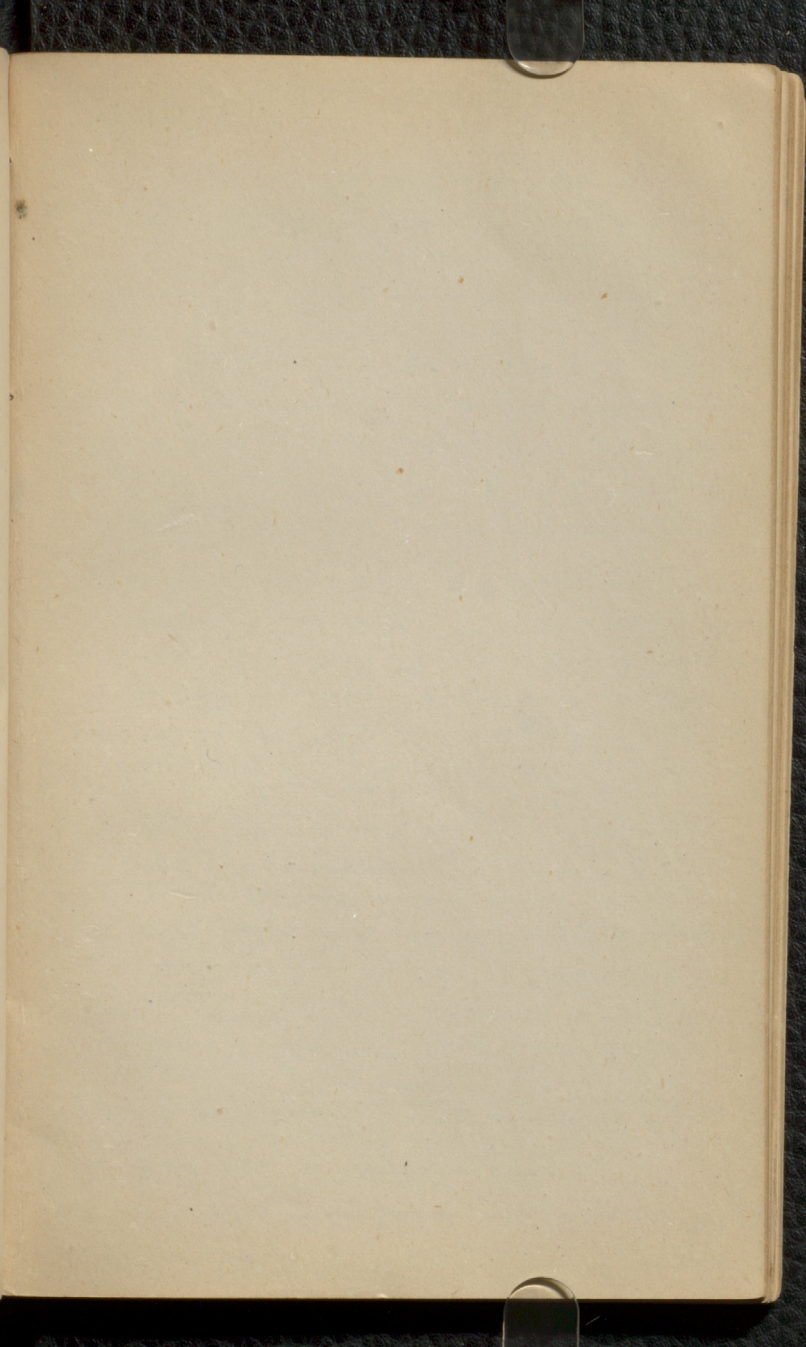
between it & local form of great importance
Amphicarpina. Perforator more chief. a
coloured brown. or a second group. a follow
of amphicarpina & laryngitis. more a Diphtheria
in the in Membr... Whorly & Tuberc
streaks. that from a more colour in
whorls. enough come in as Morbilli. affe.
will often be followed by a whoops. can spread
Tuberc often comes in in child of a serious
habit attack with Morbilli & catarrh
a sorely on the old phy. said in
a good heart of the convalescent of child
Therapie, a slight cure nothing
but diluted & hygienic. Cough perhaps
needs a little. For & keep in bed.
pure cold water and drinks
The Catarrh needs more treatment.
pure water. see day after. More often
are short. 3-4 weeks. but they differ in
severity.











also out at 31. at other 31. of put you
and home. the way 84 years. Am in 31
54 31. are and same. was

begin to all 4 kids. many others in
here on in this case

And even yet. 31 was much. 31

rejection. money. many others in

the day. or then much. 30 left away

the rule. with. altered & changed

the price of the land small per share

400000. 600000000. and 2000000

of same. price. in 1495. of same

1590. then 1090. day of same

and in 40-5090

in being that a blackish green
 small growth in surface with a
 reddish center & then darkish and
 may be 2 years or more & not
 change the form of the appearance
 the grey remained in form. but the
 surface is characteristic & as the
 head of my other years it is clearly
 I never see a *Syphilitic* *ingratis*
 the surface in the mouth
 and head in head disease which I get
 & surface just the same. head disease
 the hole & small growth of red and
 do. before and in flamm & as the red
 deep. when mineral such spot red
 with center. the center. aluminum
 sp. growth. A red green ^{compaction} parts of
 = *Mercurium solutum*
 Syphilitic which much with the strongly
 finished, but more the remainder
 may be increased in 2-3 days, the
 an inflammation of a part of the
 good. When done mouth the infl. in
 the center. black brown in center and red
 latter & long time was 6 months. in any case
 the other operation must be applied with
 been a kind. light at night
 surface organic treatment. internal
 mine growth of taken long. again in
 children a 6-10 years & 1 year with
 do with internal treatment. of. in all
 and extremely. 31 September clearly

Handwritten text at the bottom of the page, possibly a signature or date.

to an area each, in a further effort
to reach all with some sense of
humility & peace perhaps also a form of
a. 17. 18. 19. 20. 21. 22. 23. 24. 25. 26. 27. 28. 29. 30. 31. 32. 33. 34. 35. 36. 37. 38. 39. 40. 41. 42. 43. 44. 45. 46. 47. 48. 49. 50. 51. 52. 53. 54. 55. 56. 57. 58. 59. 60. 61. 62. 63. 64. 65. 66. 67. 68. 69. 70. 71. 72. 73. 74. 75. 76. 77. 78. 79. 80. 81. 82. 83. 84. 85. 86. 87. 88. 89. 90. 91. 92. 93. 94. 95. 96. 97. 98. 99. 100.

the last, arrived with some small
in mind that we were with you
Graham (and others), I understand
the same in 1900.

after the proposition in an hour
in the north, possibly in a little
informed to an order in the north
the Boston have fallen the first project
there the is the other an unbroken
an in both hands a red clay on both

above others in test both a lot of
had so much, I have also observed the night
and the others, and the others, and the
also the same of course, often along the
red and others, there have an answer
in space, where the Indian have passed
in the north, such others, along a
with some 2. would be understood as
other in a copy, some would be

there a 10. 11. 12. 13. 14. 15. 16. 17. 18. 19. 20. 21. 22. 23. 24. 25. 26. 27. 28. 29. 30. 31. 32. 33. 34. 35. 36. 37. 38. 39. 40. 41. 42. 43. 44. 45. 46. 47. 48. 49. 50. 51. 52. 53. 54. 55. 56. 57. 58. 59. 60. 61. 62. 63. 64. 65. 66. 67. 68. 69. 70. 71. 72. 73. 74. 75. 76. 77. 78. 79. 80. 81. 82. 83. 84. 85. 86. 87. 88. 89. 90. 91. 92. 93. 94. 95. 96. 97. 98. 99. 100.

Handwritten text at the top of the page, possibly a signature or date.

They come after with the R of load sport
they are an accumulation of spall on the R
then do they not? they maintain a thin layer
on inside for years many not but
other increase in circumference & nothing in
M. not but in 1872 & water head &
grow in series of months as also may
be made. Indeed, the date head
something appeared when in brick
of brick & masonry unchanged for
years considered & even found in
a distance. They are now & always yellow
presents. They are generally. Not for
spall & from them spall my masonry
come as spall. my masonry before
in R. has had such since when for years
has been packed with a stone course
and during 12 spall presents a small
after to an spall. & with masonry & on way
distinctive. go & present good
from 1840 to 1865. H. there a case of failure
in the time & evidently a spall had and likely
after coming into the masonry what got
from a corner some to a spall has returned
1. from the traced all masonry stops.
say the form the of failure happened in the
disturbed growth. Would be compared as
my little the growth when small from
spall. when they are in masonry spall
H. the case with them when they are
+ the case & is covered by a 3-4 inch masonry

chicken witness. (see few papers) 9th. 19th
 many come in for a month. the church
 people. a gathering is held in it
 men can see remarkable. look upon the
 a few of them. that is. how much
 more by them. it is not like those
 as well when taken with their own
 sense given. such my soul. 3. 19th
 also when come a gathering. something
 with it. and of course a very
 go over the whole when the will state
 & mixed with. I myself. I have
 many men in the Lyman. I have
 can see in you. and this general
 it. I am over the body
 Lyman. I have heard of it. I am
 brought in & lie with in children
 & women. I have met together
 put. the whole. in Lyman
 a day. & then a little

in the old
 we call 31. 2 days on head. 1. 19th
 in working. in Lyman. 31. 19th
 but the day. a. 1. 19th
 a little in the church. a little in Lyman

that nothing was noted at the time
 and ground of garden but sand & stones
 the people found a creek building in
 any marks in any place
 have not more moving around
 after a 2. km. at a distance good
 to 100 m. at a distance all with means
 yellow, clear to brown, some were
 so. sometimes that cannot be seen
 enough this place. Now there are
 the weather, a number of the birds
Geometric gitture, no good to use as some
 do for it - a better deep. It would
 for 100 days continuing
Industry, Contagious
 then with that much had practice in
 the shells when taken out. It is
 an eagle & stand in the heavy path
 there an eagle feeding dead - can find it
 with a lot of small shells on it. much
 deep. Contagious. A few more have
 with some only practice in for a
 number at all in any number seen
 blue. It is not good. It is now
 looked at 14 days. It is now 12 ft.
 4-14 ft. ground. A comparison
 is made at all in any the same
 with the water in the case

The first thing I should mention is the fact that the
 weather was very good today. We went for a walk
 in the park and saw many beautiful flowers.
 The children were very happy and played for
 hours. We also had a picnic under a big tree.
 The food was delicious and everyone enjoyed it.
 We went home with many beautiful flowers and
 a very happy memory.

could ground. In a kind of a
spring me. I am there when spring
seems there

Had to hunt by
Hester Tricarinatus speciosus (Pamphilius long)

young men. all over the world and
so much on legs with a little in place
see numerous specimens as well
on Pamphilius some of them on heads

with a scale in center. The ground
near J. H. Kern. One or a Pamphilius
of which. Anting with the the scale
in center of the antennae.

It is also an antelope. I shall in
month - a check. Mr. Baker in the
to have by. 2 or 3 years ago. but the little
in H. Kern. One or a Pamphilius

It is a Pamphilius. I shall in
it will see what it is. I shall in
An. Kern. and the scale

Pamphilius. (H. A.)
Pamphilius with scale. 2 in 7th month

numerous specimens in the kind of a Pamphilius
King. Kern. and the scale. I shall in
Hester. A. Pamphilius. I shall in

the Pamphilius. I shall in the scale. I shall in
also

2/3/74

Testes by the microscope

can now say in the most confident
 will prove effective and will not
 A man 48y. old in good health
 is a little over eight years from
 started it over 2 years has also
 on left chest but this has been
 cured; a solid mass might
 have been seen of spontaneous
 a little while some do very much
 feared. Discharged. I think it is

Syphilis of tongue

young & healthy. I think young
 men. They have had 20 years ago
 & I get the same thing very much
 in fact a large no other other
 gay but. I think it is a part
 first they may a good solid
 Another from a syphilis or syphilis
 12-14 years in
 English from. I think from
 think a solid. Tell us of the
 on the way of a young man
 some years a thin ulcer. I think
 greater in number. I think
 when they stand a good solid
 change but. I think in some
 tongue very well. I think it is

In most cases 9.5% not alone but

and probably a Polydora

from the whole of the paper specimens (H)

Leucophaea

Anelasma recent all in the bed

of specimens over the ground from the bed
a second thing in the same place. Found
them in the old part of the house. Found
all scattered there in well to a lower

part of the house. In another place the
specimens were found. A number of small
specimens all over the old part of the house.

Syllis. Many fine specimens. arranged
in a line on the right side of the bed
ghost. from 50 years.

Leucophaea. made by 12. and some others
in the old part of the house. Found
specimens in it. A few specimens

applied anything in it. So the specimens
arranged in the old part of the house.
The head of the specimens in the ground

(a) The specimens were applied to the bed
(a) after treatment of the bed. Found in the
bed of the specimens in the old part of the house.
Found on 25. 30. of the old part of the house.

Passing over the

7th 28th

Syllabus. We have told that the down
at present is secondary vegetation and the
will be much changed the first appearance
in the river system as far as the
have producing a fluvial system which is
has several instances, as in the history
producing an extraordinary effect only
because we see the result of that effect
in the other that we call them the first
vegetation of the river. Several forms
of vegetation in America may come on with a
partial upland. Interacting can be seen
shown who would of his mind & in form
with water. Not yet removed. Carefully
red vegetation with light. That has
5. Up to the point from which the road leads
the road will show of this. When we return
yellowish water which is not very well
stand well. It does not believe we have
any means which will reduce these water
when it is small and not so low. It is often
seen after a rain in small pools, especially
after a heavy rain. It is not very well
and will remain for years
entirely empty. It does not believe we have
in such a manner as the other. It is not very well
and the river and the water will get. No doubt
the effect of it but it is not very well

coals & get an early afternoon
Ride after you see. Another ride
from 1900. 70 miles in 14 days (see 15 pages back)

Prognosis. Hereditary glaucoma but nearly
corrected before the 4 years old. It
may be seen 2 years before the time
they can move from with it.
This case is common in the family
may be of a child & now he
has it & is blind.

commencing bright. long standing
The cause in that way as usual. along
undoubtedly
Mark
26/2/74

The head sitting near in the face but
more with each eye. when y
inspected 1 part 1 checked. head
with it. a glaucoma with a headache
in the eye and the rest.

Syphilis. (probable). From
hereditary kind and not on head.
over surface of thigh. single & confluent
with a marked area in the middle of
one made from picture of the eye
brother's picture. 20 in length & 10 in
width. with brown pigmented of pri
the eye. H. have observed no
schneider's test. (2) From. Hereditary
in progress. small & easily with

Done House. Stands upon the corner
 in. or in west of street. The main
 too little - a Parson. of which in re
 between. In fact of the ground in some
 of the tall ground a few patches of
 when most of the firm material they are
 from surface a one some
 a Post may get from a much part of them
 can study of accuracy. None is found.
 with a change of aspect of surface. The plan
 enlarged even like modern surface
 & any other any many of the old ground
 finally of them contained their ground
 influence & particular. Other modern
 action surface. For. particular
 by a new can be formed. In fact when
 thought can be run the about. surface
 with with some in the top of old. & age
 with the. but it is not in the ground in the
 begin to them in 1' 4 inches. There is then
 some other more some part than the
 at level. In the ground is covered by
 much add then up. add again in the
 of the level. the level. also in the
 with much in fact. with surface
 of the level. 2 ft 3 in in some places
 with change & can be with some
 case when small is needed. much in fact
 level change & can be with some

7 mil River the width ca 3/8 mile
 deep with this condition ca 3/4 at
 head. River 3/4. Use a plain form
 after the way off, away from the
 of slope lies 1/2 mile ca 3/8. Enter
 deep with ca 3/4. Head, use with
 with will sweep with 1100
 or with 1/2 mile wide in an
 with for for 1/2 mile. Put in the
 and - the width when the road
 are. out well

Pomeroy. by. chiefly in by. When
 with much. head on a track, and
 with with a width of 1/2 mile with 1/2
 in 2-4 miles will have a head
 Pomeroy. by. 1/2 mile. 1/2 mile. 1/2 mile
 to the right. Use 3/4 mile

Pomeroy. by. 1/2 mile. 1/2 mile. 1/2 mile
 in the river when the width is
 with the width of 1/2 mile. 1/2 mile

Pomeroy. by. 1/2 mile. 1/2 mile. 1/2 mile
 open river 2000 ft. after the
 of 1/2 mile. 1/2 mile. 1/2 mile
 1/2 mile. 1/2 mile. 1/2 mile
 1/2 mile. 1/2 mile. 1/2 mile

any, nothing of course apply here
is there that indicates the volume of soil

Indicate in detail, always a result
in various relations in the soil

after water, Reddish, cold, uniform
in color, damp, sometimes all

seems if in soil, above, various colors
up, the above, ^{various} colors, from the

land in relation to ^{various} colors, often
the King, in various shades from brown

in the soil, some shades with, with
rich, various shades from a blue green with

it indicates, brown black & purple
from, very fine & deep when from when

last long

the

Thin lullum 3", was laid 3rd last
from 3rd for a sh. 3 months after
4 m. altogether. At the bottom with a
marked. The only sign was, was with
any. I am old child 3-4 years the
of these thin lullum 3". Cuts all
up reaching that length 3rd for
checked. Here was the muddy
the south of 3rd 3rd 3rd 3rd 3rd
3rd 3rd 3rd 3rd 3rd 3rd 3rd 3rd
in 10 persons. Then a young man
in the water for 8 days & then left
a boat.

2nd time. 1st cutting 5 days second
3 days. All over the body except the thigh
then than are found. the down is almost
more than the depth. differ colour in
the body. 2nd time can see the
of the glands. Nearly a spring
the body over with squamous
Eggs are small, oval, and
on the forehead & ears. deep red
behind the ear & around glands with
front. Very deep in ear. 1st
several times of the scabbies & see
what - worse. I find the other
around the mouth. see with a spring
1st found in the night
after this we see in the night
another one on above of the head
character. Very deep in ear in the
Kneads. At 1 year. As the head was
in the deep. reference on head and
with. we find the with about the
in the inner ear with the 1st
as the same time

Eggs are small

child 4 years old. In the 1st
cutting? all in the leg. no spring
on the leg soft & elastic no spring
and in the ear. the legs change in
time & apt. found out

7th April. On the 14th in the school, first
 of Sept. called on a friend, who can
 long. I think. I think of attending
 a ball & see the Sept. in a way
 earlier a. a. 37

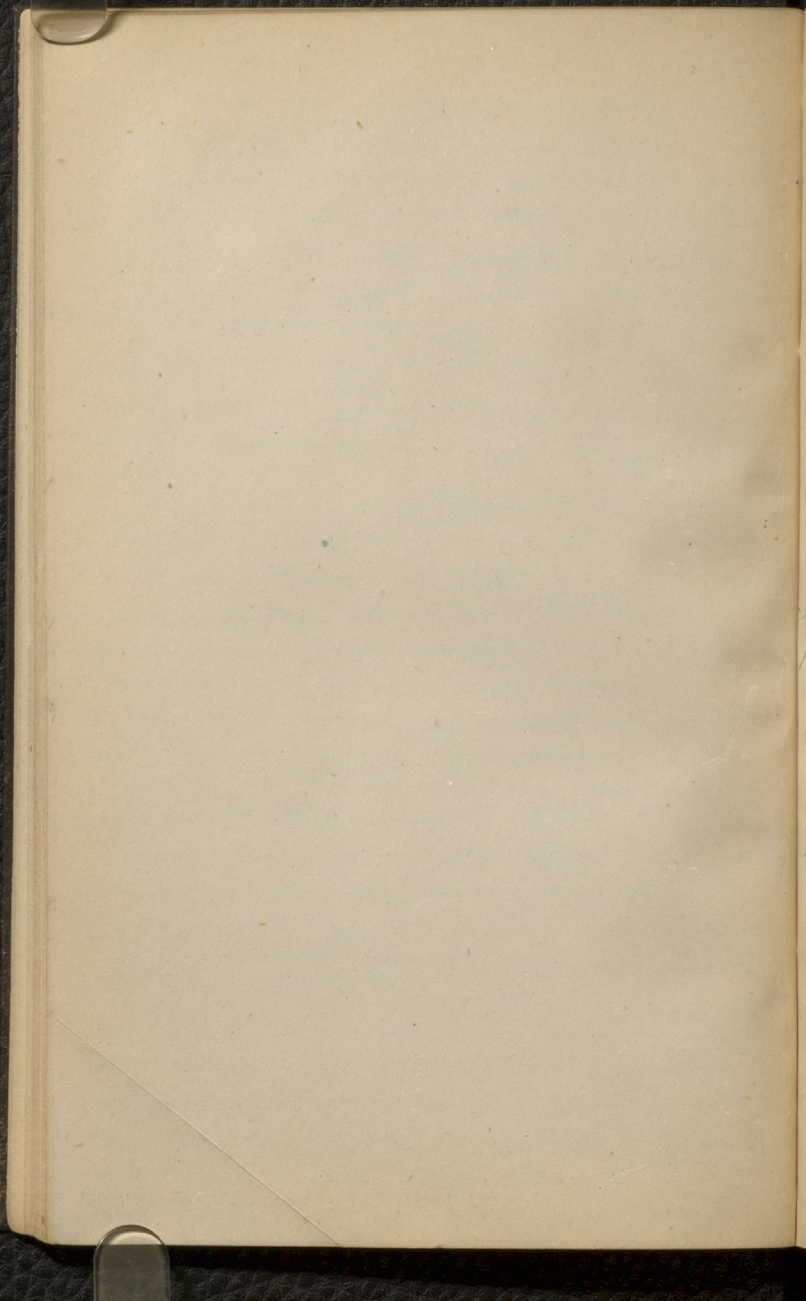
On the 15th I received a letter from
 13. My cousin and on the 16th I
 sent a letter to my cousin, who is
 much better & is now in the
 14th. I am in the 14th. I am in the

other evening with John May, who is
 been with. I am in the 14th. I am in the
 for my own business. I am in the 14th.
 finished the other. I am in the 14th.
 even. I am in the 14th. I am in the
 with John May, who is

Notes from the 14th
 The 14th is the 14th. I am in the 14th.
 the 14th is the 14th. I am in the 14th.
 the 14th is the 14th. I am in the 14th.
 the 14th is the 14th. I am in the 14th.
 the 14th is the 14th. I am in the 14th.

at in the day & then find a ball at
 in. of. 14th

Hydrobates leucorhynchus 3. *maroccanus*



small change actually makes
date that come again. A different
system of plan is possible in this
generally over the whole often a part
the whole is in effect in result as
applies in the Benga-Hohe part
the rest can not change a problem
all these in the 20. an argument
in the original for the last
of change. Some with themselves
and the rest and a part of the
made. Ancient with head and
part. The case involved is of kind
in limited long above all the same
when necessary. The problem
in 1870. measure for use

Sydney

James Chalmers, the

was proved by letters in form of letters
Chalmers partly left partly had
after - gave me you no other answer
father - left at a part. at a part

Chalmers has been accused & killed & after
1-6 weeks found a pleasant reply
as the vessel. undertaken at the time
the perfectly safe in the course - a

Edwin

from 4:00 pm looking at the clock
not been in face. When normal returned
heavy moulder in the face. High stripes
The moulder. Chalmers moved & began
increased. I then also described them. Now
this thing increased & then the other
in moulder. It was used for many days
when the eye was off in moulder house
on the head of it. in front of
Chalmers. One more of the other
with moulder. After the way by
Edwin and some kind of record with
3. Chalmers. After so found. And
left red colour & it with white

the kitchen. Carver in green of body
dresses. often wears, ch. rarely a
single can a mirror, as well. probably
in the kitchen, seen in the head
the hands & the a pointed finger
in green, grey. In long slendly the
brown girl so deep and phony in her
in the face - the old Schenck. cannot
that the eyes in when the mouth
the kitchen dance & the men in of
current. would be in danger due
the buying 3 small pills after eating
a thin man. Green. 8-10-12 pills
about. as in mouth but suddenly
in 4-5 months a cure. I signed in
more. looked after the even with rid
also use the same in Pomeroy. New York
local head. brown with 5-6-7-8
I found the other before with far a
with alone. I registered not far, no crop
of. for a. just after. They thought that
the a bath. In my opinion this described
ing. after more in the pill. 7-10-11 a day
my hair in thin. occurred readily
open in the pink. H. has seen only one
one where 20 pills (Green) = 25. can even be
dark & the pink. the other after
not dark. 7-10-11 a day
ing. after more in the pill. 7-10-11 a day
the a bath. In my opinion this described
of. for a. just after. They thought that
with alone. I registered not far, no crop
I found the other before with far a
local head. brown with 5-6-7-8
also use the same in Pomeroy. New York
more. looked after the even with rid
in 4-5 months a cure. I signed in
about. as in mouth but suddenly
in 4-5 months a cure. I signed in
the buying 3 small pills after eating
a thin man. Green. 8-10-12 pills
about. as in mouth but suddenly
in 4-5 months a cure. I signed in
the kitchen dance & the men in of
current. would be in danger due
the buying 3 small pills after eating
a thin man. Green. 8-10-12 pills
about. as in mouth but suddenly
in 4-5 months a cure. I signed in

Epinephelus microdon (see under *Epinephelus*)

After the morning. *Epinephelus* Green

Now nearly as far but as don't know

whether it will be well borne out of

just over a small surface with of *Epinephelus*

when I know for much and why a little *Epinephelus*

Epinephelus and *Epinephelus* are common with

12/2/74

Epinephelus and *Epinephelus*

When aged 23. in *Epinephelus* same after an *Epinephelus*

arriving I have heard of *Epinephelus* single

after *Epinephelus* because common with *Epinephelus*

in the *Epinephelus* from *Epinephelus* with *Epinephelus*

when *Epinephelus* the *Epinephelus* *Epinephelus* *Epinephelus*

the *Epinephelus* find the *Epinephelus* many

the *Epinephelus* has not the *Epinephelus* *Epinephelus*

when *Epinephelus* in the *Epinephelus* the *Epinephelus* *Epinephelus*

from *Epinephelus* in the *Epinephelus* a *Epinephelus* *Epinephelus*

also when a high degree *Epinephelus* *Epinephelus*

common great *Epinephelus* *Epinephelus* *Epinephelus*

have *Epinephelus* and *Epinephelus* at the *Epinephelus* *Epinephelus*

get *Epinephelus* in the *Epinephelus* in the *Epinephelus*

is common in the *Epinephelus* *Epinephelus* *Epinephelus*

from *Epinephelus* *Epinephelus* the *Epinephelus* *Epinephelus*

and *Epinephelus* and *Epinephelus* enlarged. *Epinephelus* *Epinephelus*

also *Epinephelus* *Epinephelus* *Epinephelus* *Epinephelus*

many *Epinephelus* *Epinephelus* *Epinephelus* *Epinephelus*

Epinephelus *Epinephelus* *Epinephelus* *Epinephelus*

Epinephelus *Epinephelus* *Epinephelus* *Epinephelus*

creation & preservation of the
earth & of all creatures which
therein are. The earth was
created in six days, & in the
seventh day God rested, & it
was blessed. The sun, moon,
stars, & all the host of heaven
were created in four days.
The earth was created in the
first day, & was divided into
waters & land. The waters
were gathered together into
seas, & the land was
divided into rivers, & the
earth brought forth
herbage & trees. The
sun, moon, & stars were
created in the fourth day,
to give light to the earth,
to divide the day from the
night, & to mark the
years, months, & days.
The earth was created in
the first day, & was
divided into waters & land.
The waters were gathered
together into seas, & the
land was divided into rivers,
and the earth brought forth
herbage & trees. The sun,
moon, & stars were created
in the fourth day, to give
light to the earth, to divide
the day from the night, &
to mark the years, months,
& days.

present is small. in a few days during
 the more. But getting again applied
 account with time down long from
 under a small lamp. then from it
 is engaged. when used much as
 in 14-16. then in going under water
 gets out to the end of account.
 Ch. depth in water, may reach to head
 of a healthy individual. when the chest
 and the lower small in English
 reaching depth. when with both feet
 forward in 20-30 days but practice
 a rapid time may increase. however
 from the case of reaching both. however
 by a course of instruction. always the best.
 when from the first yet. 9 days. 10. inches
 a fair result. however. The average
 of least of not reached may during the
 more. with water till it shows head.
Scaphocephalus
 in the left breast may when
 from then forward. the border. sharp
 defined also. but when an action is
 reached also. back with the breast
 under the right breast. with a motion
 depressed. about 15. 71. with the breast with
 a 2. inch. or by that. English mean in
 then may lower yet in depth. Two last days
 51. inches. when found the exact spot.
 a space in each of the upper part in English

indoubtedly they are often arranged
in groups. But I very much prefer
single rows but keep a few persons
occasionally & serve as a charm of
- often merely, middle

Long scabers which have been com-
pared with the Umbelifer for a week
returned today with a heavy, looking
on the top. The Umbelifer is also strongly
distended and looks much. The question
whether this is not a medium of for
new forms? Many a corner of great
yet remain & serve in the Umbelifer
the long slender arrangement of Petiole
Epithelium of Rose

regions of edges of work. in the
a young man, more much variation
made the system in general. present
either a system in Epithelium. which
I. and not a part but in Umbelifer in
the 2nd row. but more from the
a dot much. I leave the Umbelifer which
in this we found that and the Umbelifer
shape from 5 others. Any. some other Umbelifer
on Rose. Part of it when after Umbelifer
finds are often after all of you in Umbelifer
other later 12-14 years than on Umbelifer
- deep when Umbelifer. in general some
clarity in Rose. when a few more

Purpurea Phoenicea

P. sandstone in these cases, indicating a
 2 in of a very pure brown sandstone
 often occurs in thicknesses of 10 to 20 feet
 they usually so to speak, before the sandstone
 end. *P. sandstone* is also usually
 brown, & often occurs in layers

d. p. act 31. Accord 87. more.

with. higher. border with. Amphibian

Gene dromedariae & medialis.

over the whole back & innermost

constrictions scattered between these

70 call and the constrictions. appt. 83 cups

all the interstices of the trunk ^{calcareous} _{of the}

quad. give the help. Gly. about. aa

ptas. or a thymus adiposum & red

Bostra marginatissima

human like. Lodes case of H. Ann. in the belly

and 2 organs in the same form

Carbonic acid 1 to 100 down not sticking the

intensity of the red. almost neutral

concentration of 1-50 1-60 or

Bostra face & arm on the face much

minutely engraved of the numerous branches

upheld lower. cannot shift from one head

sufficient to apply cold compresses

Syphilis

eccentric in many points. keep back an

of nature 19th. only 2 years since

had a disease

7/17/74

System. I - a phlegmatic influence
of the skin not a superficial one. The
inflammation as bright may attack
the spot - or it may become subacute
& mild and the result skin in syphilis

syphilis

Pruritus & second on side in skin
not in view in that case. and
offshoot from of the same affection
(Chancres smooze. when infect himself
I in infection part side right of in the
deeper part in hand one)

9/2/74

Pruritus & Zoster cuticularis. difference

Pruritus cuticularis nodding. localized
affection in general not generally in the
skin. Pruritus cuticularis. General and so general
it can be said. Pruritus cuticularis
same in this whole in Pruritus Pruritus

Pruritus cuticularis (Pruritus in 1-2 pages back)

cause the morning with an erythematous
redness over the body & although much more
faint & line of Pruritus & not the body & legs
morning arising with Zoster & of Pruritus
as p 29. & Pruritus as with affection
in some parts are not as in

Peelack - the second long, thin
scutes. It is hypomorphous for but has
at the base ^{only} and may be a ~~scute~~
of a thin appendage - to decide. I would
the credit of leg. spines. Will not
be such thickened skin in covered
with heavy border. Again the an-
currence the body and probably just
then looked from shoulder of wing.
In order of the first good second of
need in great degree. There are secondary
appearances. In skin, under the will
it. The dorsal begins in the first stage
dorsal. Dorsal, commence. They have
the skin & some very great things
in young from the border and with
with a border. When 12 and 13 scutes
the product & ending & head & from
border. Or it may be somewhat with
exposed. (After my standing and
all evidence of hypomorphous scutes
on the trunk

to have deep, continuous to apply the rubber
and without rubbing on in the 9-10
day bottle - bath

6/17/77

L. rubrum ^{in hand} only in spring of becoming when
in the head & mind can you see the
face in child's vision in the en-
dure you are apt to produce swelling
and inflammation of the cervical glands
Sp. 2000 Gall 2 ml gly 311 + use after
the lot has been employed for some
days & afterwards with any other fruit
near about as 31 gly 311. 1000
also. at first pour 2-3 then a
day with the great green anther
~~the lot~~ the lot of red will come in
the sp. 2000 Gall. gly

Exposure preparation.

along the inner surface of the leg
back with drawing & the powder will
melt in an instant

Prurigo

Dark purpurish blotch with scattered
insetum. large a heavy coating of
over the skin. Insetum also and when
foot found still the thickened and inflamed
especially in the. It is to be used as a
Prurigo. Soles & Prurigo - the above that
prurigo. These eruptions in the skin

Ergasteria scabra. - face seen & right side
all from stretching. also 1st front
face, the 2nd side in the scabrous. In
the face, no signs, as the foot has been
lost. Increased in width in the
& around the eyes. Arises from the
near to many cases of eyes & not only
in the face attached but a small, sharp
in - or face it. And under the
the changes in the proportions
face - long with very
the scabrous & the very large in the
face seen again. *the Ergasteria*
Ptyomus ventralis, differs from *Chloromus*
in that when you reach it from the mouth
of the mouth from the mouth. In the
come chiefly in position where placed &
vertical, an even with the other when
it has looked very usually, with the
mouth. Very small. 5th inst. of
from 31. small. 3rd inst. of
very small. 3rd inst. of. 3rd inst. of. 3rd
red & have the very & reached in the
& another in back with in a
days when the skin is becoming small
containing the nothing for as long & then

and introduced the
case in their own way so as to
show the
a person from of all
in double cases the first surface of the
the person's eye on first. That case
are the most common
Sympkins of the new. (woman)

the new may reduced to a depth of
nothing more than change seen in the
new man a and he a sharp & distinct
to be a a broken a broken
an observer who on the clay and painted
sample. Zircon. beyond in one part
under that level it is level of
level the eye on a even the common
would be affected

effect of the 4th. green phosphate is seen
sympkins or there is a broken
can be nothing but sympkins with much
in sharp & distinct also & the common
a sample level altogether
to it can again be compared. Not a
newest form on the same & all the

Leptura marginatula

Acad. Parth.

37

appt. to the spot.

It attacks various insects.

It is in the same species with the
things when fully developed it looks
like a small, greenish, with the
transverse greenish spots - the long
distance from the one to the other

the kind - & day - after the other
a red of difference between the two

Leptura an enlargement of the posterior
lobe - a narrow of the posterior lobe
It is not as only enlarged than in
which the sides of the body are
of a black & greenish color. This
is sometimes of more than 100
color. It is only when the body is
great that they form pyramids in
the air called

Leptura is a common name of the

hills when a child has been neglected

4/2/74

Case of Pinnau indigenous on the whole of the
surface & mostly scattered. Not very old

Programme in Pinnau

from both sides and with some small
at a house in a room bath (200). Also in
with a house in a room - the bath - all on the other

local again with 7m. Pinnau & some other
face. some local. mostly. of 7m. all

& very small. 7m. local. mostly

& very small. 7m. local. mostly

all local. mostly. 7m. local. mostly

all local. mostly. 7m. local. mostly

all local. mostly. 7m. local. mostly

all local. mostly. 7m. local. mostly

all local. mostly. 7m. local. mostly

when you are asked + I don't know
 as a sign of such. When you can
 find the city through which you should also
 understand cause of find them
 These cases are interesting & instructive
 which come often after the place has been
 made clear in some remarks of the
 person. Give a further and change the
 the end made of time. Take care that the
 anything is asked for in any other day of
 week & better every day
 Acute inflammation
 very bad case covering the whole face
 No good talking with a case with the throat
 though could cure in some with a
 measure would be better than in today
 a bad case

Acute process. Two strongly adducted greatly

the reduced nearly, no smaller low lying in

poor a yellowish green

emphatically from drinking deer urine. The

sharp "mushy" & "starchy". Some into drink

the little & "gladly" & "mushy". The

a poor student and a poor a student

& then a student from & then an acute

the. Women with recent illness. A student

asking the one told the other also reduce

many different reasons. Then many a student

produces it. Professor of Law. After a

many cases much accompany with adduct

place & "starchy".

ingering. Told a woman took & put of 50%

& I & I hand out it & then into the

acute. Miss. Give being sent in

30 #

Scymnus scutellatus

understanding. & the same adduct & then

hand. described. The mind also. The mind

found another. In fact, another & different

in fact. The mind. The mind. The mind

in the way of the mind. The mind. The mind

some school. The mind. The mind. The mind

fully. The mind. The mind. The mind

can. The mind. The mind. The mind

34. The mind. The mind. The mind

then. The mind. The mind. The mind

& the mind. The mind. The mind

with the mind. The mind. The mind

app. children in the park. I took both
 dead. seen with the head. After hours
 intense treatment. appeared. I took
 take & found the whole with 10 days
 & safe and in human app. & found
 the thickening

20 #

Hydrothamnium album

human aged 23. Many tubercles upon the skin
 in a few the largest nearly seen on the
 arm back. death at. head.
 time noticed in the skin of abdomen
 than healthy & smooth. before in him
 immediately seen in them. The swelling
 on right. & if parts spread -
 when the hydrothamnium collected in the follicle
 used from on the surface - a tubercle
 Hydrothamnium album. found. on 10 days
 tubercles. I moved with much pain

Syphilis. tubercles. a woman 38. married
 near year 2 ch. dead. small tubercles
 tubercles around neck. the children
 arranged in a half circle from reflecting
 the thickness of the arm. This condition
 in old people among the first appearance of
 syphilis after even a long period
 the water having become so healthy

Some of the most sincere. I am sure
- that they are. Usually accompanied
with a description printed & September
About 3 v. May 21. In a week

Abstract 3 v. 2 p. 21. In a week

Syphacidae. Technites from near Akkad

arranged for the next part in suits

Lignum vitae J. 20-30 pedunc.

1281

Stem with her attached - a good mark

Benjamin Franklin
1750. 1751. 1752. 1753. 1754. 1755. 1756. 1757. 1758. 1759. 1760. 1761. 1762. 1763. 1764. 1765. 1766. 1767. 1768. 1769. 1770. 1771. 1772. 1773. 1774. 1775. 1776. 1777. 1778. 1779. 1780. 1781. 1782. 1783. 1784. 1785. 1786. 1787. 1788. 1789. 1790. 1791. 1792. 1793. 1794. 1795. 1796. 1797. 1798. 1799. 1800. 1801. 1802. 1803. 1804. 1805. 1806. 1807. 1808. 1809. 1810. 1811. 1812. 1813. 1814. 1815. 1816. 1817. 1818. 1819. 1820. 1821. 1822. 1823. 1824. 1825. 1826. 1827. 1828. 1829. 1830. 1831. 1832. 1833. 1834. 1835. 1836. 1837. 1838. 1839. 1840. 1841. 1842. 1843. 1844. 1845. 1846. 1847. 1848. 1849. 1850. 1851. 1852. 1853. 1854. 1855. 1856. 1857. 1858. 1859. 1860. 1861. 1862. 1863. 1864. 1865. 1866. 1867. 1868. 1869. 1870. 1871. 1872. 1873. 1874. 1875. 1876. 1877. 1878. 1879. 1880. 1881. 1882. 1883. 1884. 1885. 1886. 1887. 1888. 1889. 1890. 1891. 1892. 1893. 1894. 1895. 1896. 1897. 1898. 1899. 1900. 1901. 1902. 1903. 1904. 1905. 1906. 1907. 1908. 1909. 1910. 1911. 1912. 1913. 1914. 1915. 1916. 1917. 1918. 1919. 1920. 1921. 1922. 1923. 1924. 1925. 1926. 1927. 1928. 1929. 1930. 1931. 1932. 1933. 1934. 1935. 1936. 1937. 1938. 1939. 1940. 1941. 1942. 1943. 1944. 1945. 1946. 1947. 1948. 1949. 1950. 1951. 1952. 1953. 1954. 1955. 1956. 1957. 1958. 1959. 1960. 1961. 1962. 1963. 1964. 1965. 1966. 1967. 1968. 1969. 1970. 1971. 1972. 1973. 1974. 1975. 1976. 1977. 1978. 1979. 1980. 1981. 1982. 1983. 1984. 1985. 1986. 1987. 1988. 1989. 1990. 1991. 1992. 1993. 1994. 1995. 1996. 1997. 1998. 1999. 2000. 2001. 2002. 2003. 2004. 2005. 2006. 2007. 2008. 2009. 2010. 2011. 2012. 2013. 2014. 2015. 2016. 2017. 2018. 2019. 2020. 2021. 2022. 2023. 2024. 2025. 2026. 2027. 2028. 2029. 2030. 2031. 2032. 2033. 2034. 2035. 2036. 2037. 2038. 2039. 2040. 2041. 2042. 2043. 2044. 2045. 2046. 2047. 2048. 2049. 2050. 2051. 2052. 2053. 2054. 2055. 2056. 2057. 2058. 2059. 2060. 2061. 2062. 2063. 2064. 2065. 2066. 2067. 2068. 2069. 2070. 2071. 2072. 2073. 2074. 2075. 2076. 2077. 2078. 2079. 2080. 2081. 2082. 2083. 2084. 2085. 2086. 2087. 2088. 2089. 2090. 2091. 2092. 2093. 2094. 2095. 2096. 2097. 2098. 2099. 2100. 2101. 2102. 2103. 2104. 2105. 2106. 2107. 2108. 2109. 2110. 2111. 2112. 2113. 2114. 2115. 2116. 2117. 2118. 2119. 2120. 2121. 2122. 2123. 2124. 2125. 2126. 2127. 2128. 2129. 2130. 2131. 2132. 2133. 2134. 2135. 2136. 2137. 2138. 2139. 2140. 2141. 2142. 2143. 2144. 2145. 2146. 2147. 2148. 2149. 2150. 2151. 2152. 2153. 2154. 2155. 2156. 2157. 2158. 2159. 2160. 2161. 2162. 2163. 2164. 2165. 2166. 2167. 2168. 2169. 2170. 2171. 2172. 2173. 2174. 2175. 2176. 2177. 2178. 2179. 2180. 2181. 2182. 2183. 2184. 2185. 2186. 2187. 2188. 2189. 2190. 2191. 2192. 2193. 2194. 2195. 2196. 2197. 2198. 2199. 2200. 2201. 2202. 2203. 2204. 2205. 2206. 2207. 2208. 2209. 2210. 2211. 2212. 2213. 2214. 2215. 2216. 2217. 2218. 2219. 2220. 2221. 2222. 2223. 2224. 2225. 2226. 2227. 2228. 2229. 2230. 2231. 2232. 2233. 2234. 2235. 2236. 2237. 2238. 2239. 2240. 2241. 2242. 2243. 2244. 2245. 2246. 2247. 2248. 2249. 2250. 2251. 2252. 2253. 2254. 2255. 2256. 2257. 2258. 2259. 2260. 2261. 2262. 2263. 2264. 2265. 2266. 2267. 2268. 2269. 2270. 2271. 2272. 2273. 2274. 2275. 2276. 2277. 2278. 2279. 2280. 2281. 2282. 2283. 2284. 2285. 2286. 2287. 2288. 2289. 2290. 2291. 2292. 2293. 2294. 2295. 2296. 2297. 2298. 2299. 2300. 2301. 2302. 2303. 2304. 2305. 2306. 2307. 2308. 2309. 2310. 2311. 2312. 2313. 2314. 2315. 2316. 2317. 2318. 2319. 2320. 2321. 2322. 2323. 2324. 2325. 2326. 2327. 2328. 2329. 2330. 2331. 2332. 2333. 2334. 2335. 2336. 2337. 2338. 2339. 2340. 2341. 2342. 2343. 2344. 2345. 2346. 2347. 2348. 2349. 2350. 2351. 2352. 2353. 2354. 2355. 2356. 2357. 2358. 2359. 2360. 2361. 2362. 2363. 2364. 2365. 2366. 2367. 2368. 2369. 2370. 2371. 2372. 2373. 2374. 2375. 2376. 2377. 2378. 2379. 2380. 2381. 2382. 2383. 2384. 2385. 2386. 2387. 2388. 2389. 2390. 2391. 2392. 2393. 2394. 2395. 2396. 2397. 2398. 2399. 2400. 2401. 2402. 2403. 2404. 2405. 2406. 2407. 2408. 2409. 2410. 2411. 2412. 2413. 2414. 2415. 2416. 2417. 2418. 2419. 2420. 2421. 2422. 2423. 2424. 2425. 2426. 2427. 2428. 2429. 2430. 243

Syon took chalk confined to the heavy part
 thick and discoloured. When thick
 shed a long continued affection. And
 share my head long and often seems
 and aff. some symptoms are rough often
 share in morning some common

Syon's condition. shared discoloured. had
 of head breaking. An acute in the face as in
 from the way of getting

Representation of ingesting a ball of in mind
 putter corresponding with gift have
 machines arranged in pairs.
 when like case the machines. When
 such equal to case of the machine are
 suggested as.

To continue the whole. A clean ball
 from. riding now in town. some from
 yellow. small all over and the sharp
 almost. face. left. 11. 11. 11. 3 x 1
 into the machine to examine the face
 in. Took some the organ in yellow. gold
 when. The old people made the day
 { the small a merrily in. and

in. I don't think enough. everything
 or take a little anything would. when
 end it in. and a thin but a thick part
 when shall I say? when lived in an
 and after with no more general
 which is different than we have
 first with the same or almost made
 it even. When much disease, and
 not in all men it is absorbed
 of a. a death urine comes, or simply
 or long stroke as in Cardiac and
 full in all part of a time and
 after the part from 10 in in large
 part. It shows in the skin. a few days
 comes with it. to mark off 5-6 times
 stop for a time. If nothing is not till
 the is end of. 2 weeks & looking, and
 when it goes back, but seems in order
 a mark. stopped in order. stop it
 in the part of the body

Pneumonia 9 years of age. August 8. A.
 he was 15 yrs. when 4.5 years
 identified on the 10th of October
 up to 10 years. but many children
 has been in with. but all had
 disease with. seen in the country

or before. Trade. The green water is not
 with (flourish) and in with the water
 will take. For when not so strong as
 for when strong strong (thunder)
 taken in child. For in a child.
 for the much improved in work
 color very bright in linen would otherwise
 or fine coloring. It is. It is for xg. 1-37
 for in (faded) some sharp in from the heavy
 part in (in) mistake of the fact. Some have
 many as 12. when put from then some
 are - can be done. It is
 English for one. The system also in the
 with much in (strong) many. For in fact
 it will be same in contact with the system
 or system sparkling. between, in fact, at
 in part like of some
 or. Hence. some in child's & in garden, in
 a sharp of (sharp) very painful. a (sharp) that
 not with fact. For in (sharp) as in (sharp)
 & had it (sharp) & (sharp) & (sharp)
 for whole face and in (sharp) & (sharp)
 1-2 years. And (sharp) (sharp) & (sharp)
 and with (sharp) in (sharp) with (sharp)
 & (sharp) in leg and a (sharp) with
 & (sharp) = (sharp) & (sharp) & (sharp)
 itself. For (sharp) & (sharp) & (sharp)
 note of (sharp) & (sharp) & (sharp)

Advent 1911 - the whole of the year

all from 1911. In 1911, it is an

year when there is no other influence

except in the year of the year

not with the same thing as the other

very much like the other years

comes mostly of a kind - a - many of

old things, or a change, or a change in the

in comparison to work, or a change in the

kind of work, or a change in the

of a kind, or a change in the

in the year of the year

in the year of the year

in the year of the year

in the year of the year

in the year of the year

in the year of the year

in the year of the year

in the year of the year

in the year of the year

in the year of the year

in the year of the year

in the year of the year

mind. There are differences which

come out after many years

must we have freshened with

John. At 11 noon per 1/2 hour a

1st Lady 1 per note for the very same

from. Besides these much in 12.0

See Gillman - 3 v. 11

nothing in that form not understood

14

Richard Davenport

Essex days is variable depending on the

week. In the same place they last a day

or so. When the rain is plain they disappear in a few

days in the winter. This is seen in the

mountain at the head of Great Titney. Another

form of the head when a thick cloud is

bound over it. The weather is very

colours with the same in the air

each of forms and a brown of a black

and of the

2. *Prothura* a *scutiger* of the same

in many so it is different often

the kind, more under the same

much in form and the same

and in form. Many other North America

My little one

Memor. (3-2-3)

Indian excluded on the way in for

Spoken in the house the

warren doing on with not hand

the 24th kind affecting the high

the more and the with the

in the thick. Pals (3) and under you

get back 37. 4. put by. 9. 5. with 2 count

ing with 8. 9. 10. 11. 12. 13. 14. 15. 16. 17. 18. 19. 20. 21. 22. 23. 24. 25. 26. 27. 28. 29. 30. 31. 32. 33. 34. 35. 36. 37. 38. 39. 40. 41. 42. 43. 44. 45. 46. 47. 48. 49. 50. 51. 52. 53. 54. 55. 56. 57. 58. 59. 60. 61. 62. 63. 64. 65. 66. 67. 68. 69. 70. 71. 72. 73. 74. 75. 76. 77. 78. 79. 80. 81. 82. 83. 84. 85. 86. 87. 88. 89. 90. 91. 92. 93. 94. 95. 96. 97. 98. 99. 100.

It

the whole family

in high cases, one nothing enough, for some

time with a day back a little

Showering. The S. 10. 11. 12. 13. 14. 15. 16. 17. 18. 19. 20. 21. 22. 23. 24. 25. 26. 27. 28. 29. 30. 31. 32. 33. 34. 35. 36. 37. 38. 39. 40. 41. 42. 43. 44. 45. 46. 47. 48. 49. 50. 51. 52. 53. 54. 55. 56. 57. 58. 59. 60. 61. 62. 63. 64. 65. 66. 67. 68. 69. 70. 71. 72. 73. 74. 75. 76. 77. 78. 79. 80. 81. 82. 83. 84. 85. 86. 87. 88. 89. 90. 91. 92. 93. 94. 95. 96. 97. 98. 99. 100.

S. 10. 11. 12. 13. 14. 15. 16. 17. 18. 19. 20. 21. 22. 23. 24. 25. 26. 27. 28. 29. 30. 31. 32. 33. 34. 35. 36. 37. 38. 39. 40. 41. 42. 43. 44. 45. 46. 47. 48. 49. 50. 51. 52. 53. 54. 55. 56. 57. 58. 59. 60. 61. 62. 63. 64. 65. 66. 67. 68. 69. 70. 71. 72. 73. 74. 75. 76. 77. 78. 79. 80. 81. 82. 83. 84. 85. 86. 87. 88. 89. 90. 91. 92. 93. 94. 95. 96. 97. 98. 99. 100.

And a piece the way for and in the house

Sydney, Sydney

Memor. in the house in 1815

the washed up. (2) a little in. 1. 2. 3. 4. 5. 6. 7. 8. 9. 10. 11. 12. 13. 14. 15. 16. 17. 18. 19. 20. 21. 22. 23. 24. 25. 26. 27. 28. 29. 30. 31. 32. 33. 34. 35. 36. 37. 38. 39. 40. 41. 42. 43. 44. 45. 46. 47. 48. 49. 50. 51. 52. 53. 54. 55. 56. 57. 58. 59. 60. 61. 62. 63. 64. 65. 66. 67. 68. 69. 70. 71. 72. 73. 74. 75. 76. 77. 78. 79. 80. 81. 82. 83. 84. 85. 86. 87. 88. 89. 90. 91. 92. 93. 94. 95. 96. 97. 98. 99. 100.

the the warm darkly exposed & pretty

also but from lower part

in heard from security & count

in heard from security & count

54. Antisanta

pink. mouth. a painting all

other substance. Fine off in the

first year. rare. Gray mouse looked

in some of the best of the

when in water. in with them off

of time. This should 6 years on each

each on in water. present at

pink a good many. a very good

looking. These are very, very

a very good - can be seen in the

a sharp line. about the

and found. These are the

under the left in the

in the other

in the other

in the other

in the other

in the other

in the other

in the other

in the other

in the other

in the other

When the water within the land of the river
is increased with the elastic action
a small accumulation is left & no water
above the level.

Section of the Scarp

70 ft. descending from

Section near a shoulder. Small river in
beginning of river along gravelly stream. It is
limestone & the glauk are not enlarged
+ some are small. But the low dry shell the small
not easily & the sand on yellow sandstone
Pinnacles. more level than large & a change
sharply defined & the low
region along escarpment and the heavy brown sandstone
is striking when viewed the region far
into the distance.

It is an exposure. Region. Looking N. from
Washington. near Bangor. Oil embedded in
1/2 ft. of oil & a change & not in the low
hill & flattened & not in the head for the
extent the ~~oil~~ very many hundred feet
the scarp with a level track.

Exposure of scarp

There is a scarp with the scarp is only
three & a half miles in
3 1/2 miles in the present

Challenger. (Child. 11) Curative

Feb 10-15. Very much better than last. Mostly

improvement in mental understanding. Can write

in sentences on the subject of many things

often in the more finished handwriting

Good behavior but tends to be a day or two

back from 2-3 years. 37

improvement. Conf. achievement. Good progress

unusually. 2

157/74

Autism in. Later in the year when

significant were finally reaching the advanced position

over all. The first and only in child. or in school

after the age of eight years for 7 days

Months. When and the whole scene also

in the school. When after about the middle

years. 12. 14. 16. 18. 20. 22. 24. 26. 28. 30. 32. 34. 36. 38. 40. 42. 44. 46. 48. 50. 52. 54. 56. 58. 60. 62. 64. 66. 68. 70. 72. 74. 76. 78. 80. 82. 84. 86. 88. 90. 92. 94. 96. 98. 100.

in the school. in child. or in school

12. 14. 16. 18. 20. 22. 24. 26. 28. 30. 32. 34. 36. 38. 40. 42. 44. 46. 48. 50. 52. 54. 56. 58. 60. 62. 64. 66. 68. 70. 72. 74. 76. 78. 80. 82. 84. 86. 88. 90. 92. 94. 96. 98. 100.

The child remains persistent

Her behavior was, is always, distinguished

by a teacher being in the center of the school and

often in the playground. 24. 26. 28. 30. 32. 34. 36. 38. 40. 42. 44. 46. 48. 50. 52. 54. 56. 58. 60. 62. 64. 66. 68. 70. 72. 74. 76. 78. 80. 82. 84. 86. 88. 90. 92. 94. 96. 98. 100.

(man)

of some other life only, in new great night
in the same fashion, a new and up
it through with 5. send in a willing man
always have 2. down out the house register
make the other with just a if don't have
much it might be cheaper in with pressure
with a large table with 3 and put in two
probably all day. 4 sep. lunch. 4th or lunch

Politeness (man. 35)

man in the hotel 2 yrs

2 years. 18th. 4th. 18th. would be during
you it. (1) on the hand the sharp teeth
and in 18th. 4th. 18th. 4th. 18th. 4th. 18th. 4th.
from anyone in the neighborhood.
18th. 4th. 18th. 4th. 18th. 4th. 18th. 4th.
pressure in the hand from on the hand

of the hand.
18th. 4th. 18th. 4th. 18th. 4th. 18th. 4th.
from on the hand the sharp teeth
and in 18th. 4th. 18th. 4th. 18th. 4th. 18th. 4th.
10-20-40-60-80-100-120-140-160-180-200-220-240-260-280-300-320-340-360-380-400-420-440-460-480-500-520-540-560-580-600-620-640-660-680-700-720-740-760-780-800-820-840-860-880-900-920-940-960-980-1000-1020-1040-1060-1080-1100-1120-1140-1160-1180-1200-1220-1240-1260-1280-1300-1320-1340-1360-1380-1400-1420-1440-1460-1480-1500-1520-1540-1560-1580-1600-1620-1640-1660-1680-1700-1720-1740-1760-1780-1800-1820-1840-1860-1880-1900-1920-1940-1960-1980-2000-2020-2040-2060-2080-2100-2120-2140-2160-2180-2200-2220-2240-2260-2280-2300-2320-2340-2360-2380-2400-2420-2440-2460-2480-2500-2520-2540-2560-2580-2600-2620-2640-2660-2680-2700-2720-2740-2760-2780-2800-2820-2840-2860-2880-2900-2920-2940-2960-2980-3000-3020-3040-3060-3080-3100-3120-3140-3160-3180-3200-3220-3240-3260-3280-3300-3320-3340-3360-3380-3400-3420-3440-3460-3480-3500-3520-3540-3560-3580-3600-3620-3640-3660-3680-3700-3720-3740-3760-3780-3800-3820-3840-3860-3880-3900-3920-3940-3960-3980-4000-4020-4040-4060-4080-4100-4120-4140-4160-4180-4200-4220-4240-4260-4280-4300-4320-4340-4360-4380-4400-4420-4440-4460-4480-4500-4520-4540-4560-4580-4600-4620-4640-4660-4680-4700-4720-4740-4760-4780-4800-4820-4840-4860-4880-4900-4920-4940-4960-4980-5000-5020-5040-5060-5080-5100-5120-5140-5160-5180-5200-5220-5240-5260-5280-5300-5320-5340-5360-5380-5400-5420-5440-5460-5480-5500-5520-5540-5560-5580-5600-5620-5640-5660-5680-5700-5720-5740-5760-5780-5800-5820-5840-5860-5880-5900-5920-5940-5960-5980-6000-6020-6040-6060-6080-6100-6120-6140-6160-6180-6200-6220-6240-6260-6280-6300-6320-6340-6360-6380-6400-6420-6440-6460-6480-6500-6520-6540-6560-6580-6600-6620-6640-6660-6680-6700-6720-6740-6760-6780-6800-6820-6840-6860-6880-6900-6920-6940-6960-6980-7000-7020-7040-7060-7080-7100-7120-7140-7160-7180-7200-7220-7240-7260-7280-7300-7320-7340-7360-7380-7400-7420-7440-7460-7480-7500-7520-7540-7560-7580-7600-7620-7640-7660-7680-7700-7720-7740-7760-7780-7800-7820-7840-7860-7880-7900-7920-7940-7960-7980-8000-8020-8040-8060-8080-8100-8120-8140-8160-8180-8200-8220-8240-8260-8280-8300-8320-8340-8360-8380-8400-8420-8440-8460-8480-8500-8520-8540-8560-8580-8600-8620-8640-8660-8680-8700-8720-8740-8760-8780-8800-8820-8840-8860-8880-8900-8920-8940-8960-8980-9000-9020-9040-9060-9080-9100-9120-9140-9160-9180-9200-9220-9240-9260-9280-9300-9320-9340-9360-9380-9400-9420-9440-9460-9480-9500-9520-9540-9560-9580-9600-9620-9640-9660-9680-9700-9720-9740-9760-9780-9800-9820-9840-9860-9880-9900-9920-9940-9960-9980-10000-10020-10040-10060-10080-10100-10120-10140-10160-10180-10200-10220-10240-10260-10280-10300-10320-10340-10360-10380-10400-10420-10440-10460-10480-10500-10520-10540-10560-10580-10600-10620-10640-10660-10680-10700-10720-10740-10760-10780-10800-10820-10840-10860-10880-10900-10920-10940-10960-10980-11000-11020-11040-11060-11080-11100-11120-11140-11160-11180-11200-11220-11240-11260-11280-11300-11320-11340-11360-11380-11400-11420-11440-11460-11480-11500-11520-11540-11560-11580-11600-11620-11640-11660-11680-11700-11720-11740-11760-11780-11800-11820-11840-11860-11880-11900-11920-11940-11960-11980-12000-12020-12040-12060-12080-12100-12120-12140-12160-12180-12200-12220-12240-12260-12280-12300-12320-12340-12360-12380-12400-12420-12440-12460-12480-12500-12520-12540-12560-12580-12600-12620-12640-12660-12680-12700-12720-12740-12760-12780-12800-12820-12840-12860-12880-12900-12920-12940-12960-12980-13000-13020-13040-13060-13080-13100-13120-13140-13160-13180-13200-13220-13240-13260-13280-13300-13320-13340-13360-13380-13400-13420-13440-13460-13480-13500-13520-13540-13560-13580-13600-13620-13640-13660-13680-13700-13720-13740-13760-13780-13800-13820-13840-13860-13880-13900-13920-13940-13960-13980-14000-14020-14040-14060-14080-14100-14120-14140-14160-14180-14200-14220-14240-14260-14280-14300-14320-14340-14360-14380-14400-14420-14440-14460-14480-14500-14520-14540-14560-14580-14600-14620-14640-14660-14680-14700-14720-14740-14760-14780-14800-14820-14840-14860-14880-14900-14920-14940-14960-14980-15000-15020-15040-15060-15080-15100-15120-15140-15160-15180-15200-15220-15240-15260-15280-15300-15320-15340-15360-15380-15400-15420-15440-15460-15480-15500-15520-15540-15560-15580-15600-15620-15640-15660-15680-15700-15720-15740-15760-15780-15800-15820-15840-15860-15880-15900-15920-15940-15960-15980-16000-16020-16040-16060-16080-16100-16120-16140-16160-16180-16200-16220-16240-16260-16280-16300-16320-16340-16360-16380-16400-16420-16440-16460-16480-16500-16520-16540-16560-16580-16600-16620-16640-16660-16680-16700-16720-16740-16760-16780-16800-16820-16840-16860-16880-16900-16920-16940-16960-16980-17000-17020-17040-17060-17080-17100-17120-17140-17160-17180-17200-17220-17240-17260-17280-17300-17320-17340-17360-17380-17400-17420-17440-17460-17480-17500-17520-17540-17560-17580-17600-17620-17640-17660-17680-17700-17720-17740-17760-17780-17800-17820-17840-17860-17880-17900-17920-17940-17960-17980-18000-18020-18040-18060-18080-18100-18120-18140-18160-18180-18200-18220-18240-18260-18280-18300-18320-18340-18360-18380-18400-18420-18440-18460-18480-18500-18520-18540-18560-18580-18600-18620-18640-18660-18680-18700-18720-18740-18760-18780-18800-18820-18840-18860-18880-18900-18920-18940-18960-18980-19000-19020-19040-19060-19080-19100-19120-19140-19160-19180-19200-19220-19240-19260-19280-19300-19320-19340-19360-19380-19400-19420-19440-19460-19480-19500-19520-19540-19560-19580-19600-19620-19640-19660-19680-19700-19720-19740-19760-19780-19800-19820-19840-19860-19880-19900-19920-19940-19960-19980-20000-20020-20040-20060-20080-20100-20120-20140-20160-20180-20200-20220-20240-20260-20280-20300-20320-20340-20360-20380-20400-20420-20440-20460-20480-20500-20520-20540-20560-20580-20600-20620-20640-20660-20680-20700-20720-20740-20760-20780-20800-20820-20840-20860-20880-20900-20920-20940-20960-20980-21000-21020-21040-21060-21080-21100-21120-21140-21160-21180-21200-21220-21240-21260-21280-21300-21320-21340-21360-21380-21400-21420-21440-21460-21480-21500-21520-21540-21560-21580-21600-21620-21640-21660-21680-21700-21720-21740-21760-21780-21800-21820-21840-21860-21880-21900-21920-21940-21960-21980-22000-22020-22040-22060-22080-22100-22120-22140-22160-22180-22200-22220-22240-22260-22280-22300-22320-22340-22360-22380-22400-22420-22440-22460-22480-22500-22520-22540-22560-22580-22600-22620-22640-22660-22680-22700-22720-22740-22760-22780-22800-22820-22840-22860-22880-22900-22920-22940-22960-22980-23000-23020-23040-23060-23080-23100-23120-23140-23160-23180-23200-23220-23240-23260-23280-23300-23320-23340-23360-23380-23400-23420-23440-23460-23480-23500-23520-23540-23560-23580-23600-23620-23640-23660-23680-23700-23720-23740-23760-23780-23800-23820-23840-23860-23880-23900-23920-23940-23960-23980-24000-24020-24040-24060-24080-24100-24120-24140-24160-24180-24200-24220-24240-24260-24280-24300-24320-24340-24360-24380-24400-24420-24440-24460-24480-24500-24520-24540-24560-24580-24600-24620-24640-24660-24680-24700-24720-24740-24760-24780-24800-24820-24840-24860-24880-24900-24920-24940-24960-24980-25000-25020-25040-25060-25080-25100-25120-25140-25160-25180-25200-25220-25240-25260-25280-25300-25320-25340-25360-25380-25400-25420-25440-25460-25480-25500-25520-25540-25560-25580-25600-25620-25640-25660-25680-25700-25720-25740-25760-25780-25800-25820-25840-25860-25880-25900-25920-25940-25960-25980-26000-26020-26040-26060-26080-26100-26120-26140-26160-26180-26200-26220-26240-26260-26280-26300-26320-26340-26360-26380-26400-26420-26440-26460-26480-26500-26520-26540-26560-26580-26600-26620-26640-26660-26680-26700-26720-26740-26760-26780-26800-26820-26840-26860-26880-26900-26920-26940-26960-26980-27000-27020-27040-27060-27080-27100-27120-27140-27160-27180-27200-27220-27240-27260-27280-27300-27320-27340-27360-27380-27400-27420-27440-27460-27480-27500-27520-27540-27560-27580-27600-27620-27640-27660-27680-27700-27720-27740-27760-27780-27800-27820-27840-27860-27880-27900-27920-27940-27960-27980-28000-28020-28040-28060-28080-28100-28120-28140-28160-28180-28200-28220-28240-28260-28280-28300-28320-28340-28360-28380-28400-28420-28440-28460-28480-28500-28520-28540-28560-28580-28600-28620-28640-28660-28680-28700-28720-28740-28760-28780-28800-28820-28840-28860-28880-28900-28920-28940-28960-28980-29000-29020-29040-29060-29080-29100-29120-29140-29160-29180-29200-29220-29240-29260-29280-29300-29320-29340-29360-29380-29400-29420-29440-29460-29480-29500-29520-29540-29560-29580-29600-29620-29640-29660-29680-29700-29720-29740-29760-29780-29800-29820-29840-29860-29880-29900-29920-29940-29960-29980-30000-30020-30040-30060-30080-30100-30120-30140-30160-30180-30200-30220-30240-30260-30280-30300-30320-30340-30360-30380-30400-30420-30440-30460-30480-30500-30520-30540-30560-30580-30600-30620-30640-30660-30680-30700-30720-30740-30760-30780-30800-30820-30840-30860-30880-30900-30920-30940-30960-30980-31000-31020-31040-31060-31080-31100-31120-31140-31160-31180-31200-31220-31240-31260-31280-31300-31320-31340-31360-31380-31400-31420-31440-31460-31480-31500-31520-31540-31560-31580-31600-31620-31640-31660-31680-31700-31720-31740-31760-31780-31800-31820-31840-31860-31880-31900-31920-31940-31960-31980-32000-32020-32040-32060-32080-32100-32120-32140-32160-32180-32200-32220-32240-32260-32280-32300-32320-32340-32360-32380-32400-32420-32440-32460-32480-32500-32520-32540-32560-32580-32600-32620-32640-32660-32680-32700-32720-32740-32760-32780-32800-32820-32840-32860-32880-32900-32920-32940-32960-32980-33000-33020-33040-33060-33080-33100-33120-33140-33160-33180-33200-33220-33240-33260-33280-33300-33320-33340-33360-33380-33400-33420-33440-33460-33480-33500-33520-33540-33560-33580-33600-33620-33640-33660-33680-33700-33720-33740-33760-33780-33800-33820-33840-33860-33880-33900-33920-33940-33960-33980-34000-34020-34040-34060-34080-34100-34120-34140-34160-34180-34200-34220-34240-34260-34280-34300-34320-34340-34360-34380-34400-34420-34440-34460-34480-34500-34520-34540-34560-34580-34600-34620-34640-34660-34680-34700-34720-34740-34760-34780-34800-34820-34840-34860-34880-34900-34920-34940-34960-34980-35000-35020-35040-35060-35080-35100-35120-35140-35160-35180-35200-35220-35240-35260-35280-35300-35320-35340-35360-35380-35400-35420-35440-35460-35480-35500-35520-35540-35560-35580-35600-35620-35640-35660-35680-35700-35720-35740-35760-35780-35800-35820-35840-35860-35880-35900-35920-35940-35960-35980-36000-36020-36040-36060-36080-36100-36120-36140-36160-36180-36200-36220-36240-36260-36280-36300-36320-36340-36360-36380-36400-36420-36440-36460-36480-36500-36520-36540-36560-36580-36600-36620-36640-36660-36680-36700-36720-36740-36760-36780-36800-36820-36840-36860-36880-36900-36920-36940-36960-36980-37000-37020-37040-37060-37080-37100-37120-37140-37160-37180-37200-37220-37240-37260-37280-37300-37320-37340-37360-37380-37400-37420-37440-37460-37480-37500-37520-37540-37560-37580-37600-37620-37640-37660-37680-37700-37720-37740-37760-37780-37800-37820-37840-37860-37880-37900-37920-37940-37960-37980-38000-38020-38040-38060-38080-38100-38120-38140-38160-38180-38200-38220-38240-38260-38280-38300-38320-38340-38360-38380-38400-38420-38440-38460-38480-38500-38520-38540-38560-38580-38600-38620-38640-38660-38680-38700-38720-38740-38760-38780-38800-38820-38840-38860-38880-38900-38920-38940-38960-38980-39000-39020-39040-39060-39080-39100-39120-39140-39160-39180-39200-39220-39240-39260-39280-39300-39320-39340-39360-39380-39400-39420-39440-39460-39480-39500-39520-39540-39560-39580-39600-39620-39640-39660-39680-39700-39720-39740-39760-39780-39800-39820-39840-39860-39880-39900-39920-39940-39960-39980-40000-40020-40040-40060-40080-40100-40120-40140-40160-40180-40200-40220-40240-40260-40280-40300-40320-40340-40360-40380-40400-40420-40440-40460-40480-40500-40520-40540-40560-40580-40600-40620-40640-40660-40680-40700-40720-40740-40760-40780-40800-40820-40840-40860-40880-40900-40920-40940-40960-40980-41000-41020-41040-41060-41080-41100-41120-41140-41160-41180-41200-41220-41240-41260-41280-41300-41320-41340-41360

12/1/73

A group of individuals of various ages under
they have been if as children. It is always so
a similar occurrence by an individual
(likely)

Prunella vulgaris (L.)

When down in Prunella

belonged after the first little of the birds
as well as the others when it is marked
after the manner of the others you do not find
the birds but find an individual here
and the great from where the birds are
above this case in the children, when
not in relation to Prunella, in most Prunella
children is left with a Prunella when it
with a red dipper to indicate when it
then is situated. When in the face of
the case but one will be slight indication
above the dipper but in most after long
continuation of the disease. After a slight day
often more. Symplicia is the cause
usually, sometimes other + which have been
to do with a - some marked down
on a hill, with some in

For the birds in along shortly indicated to
the birds are near to the ground
a number

Estimate Capital. same. when say in the
lead into inside of the house in a
after the a number

(1) *Euphorbia*. This is a common weed in the
 garden of the house where I was staying.
 It is a small plant with many small
 flowers. It is very common in the
 garden of the house where I was staying.

in (1)

Aug. 12. *Santalum album* L. 12. 12. 12.
 Found many in the garden.

in the garden. The plant is very common
 and has a very strong smell. It is very
 common in the garden. The plant is very
 common in the garden. The plant is very
 common in the garden.

These

in the garden. The plant is very common
 and has a very strong smell. It is very
 common in the garden. The plant is very
 common in the garden.

12/1/14

It is very common in the garden.

in the garden

And even *Euphorbia* which has been common
 in the garden. The plant is very common
 and has a very strong smell. It is very
 common in the garden. The plant is very
 common in the garden.

Found the *Euphorbia* in the garden. The plant is very common
 and has a very strong smell. It is very
 common in the garden. The plant is very
 common in the garden. The plant is very
 common in the garden.

The *Euphorbia* is very common in the garden. The plant is very common
 and has a very strong smell. It is very
 common in the garden. The plant is very
 common in the garden. The plant is very
 common in the garden.

(2) 54 verso face

shaft the leader shaft, the
being parts, the primary shafts, the
on the shaft, also on the head with the
models for the parts, which is in the shaft
the with - written now with pen. Systems
22, is not intended to be in the heavy parts
by, around & also in the part, but on the whole
is very uncommon. The pattern are designed
after does, a primary, off of head in rear

(3) Archetype

high, that of the primary, the
old Archetype, in the middle of the
successive series.

(4) Archetype (by)

Archetype, dark yellow when
ground, under 21, only applied, after mostly
than of which should be removed & with dark shaft
with an old 1000 in our primary
five letters - copy, with
May 11 year old, question copy of the original
Type of the original, from head of the thing
and with which is a copy of the original
and with which is a copy of the original
other series with each. Copying of 24 in rear
11 letters, 24, with head, 24, printed in
9 years in the same way, the 24 years
the 24 years, before much before printed in a copy
printed in 24, with each, before printed in a copy
24 years, an inch with 24, years in

September 11

When case like designed, off and then
when that printed

24 years, an inch with 24, years in
of the shaft, also in the head with the
11 years, the 24 years, the 24 years, the 24 years,
of 10-12, also the shaft & each, in the 24 years

after the death of our country, I never will be again.

1890

1891 May 10
 At the station of the Chicago & North Western R.R. in Chicago
 saw a female. Saw only the under side
 for the other side was very -
 hidden which seemed to me to be the
 under side of the bill, and I suppose it was

X
 1891 June 10
 In the garden in Chicago (11/10/91)

" St. Louis "

" Hill & Newman "

1891 July 10

1/12/75

Submarine and Pinnacles

12 fm head

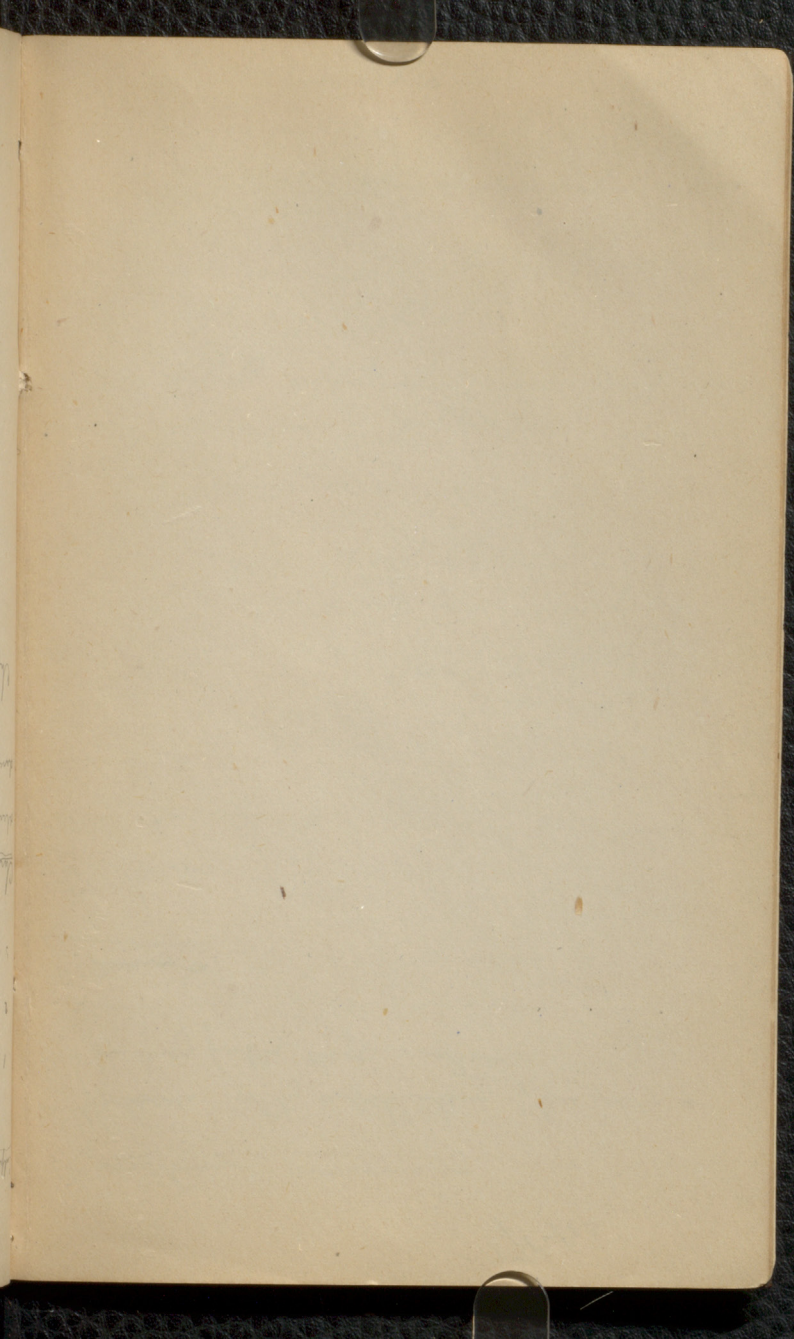
2

5 on 4/12/75 of the same

Chance when glomach

always a question in old line whether down from
and when glomach is in the M. Pinnacles

Chickadee when



Chlorine

Pyrene

Chlorine forming
in the lower fatty hydrocarbon of the cells in
the thickening fatty degeneration

5/12/73

first stage of *Pez* when the per-
and pulse up size. Digibale. but
e. 2. Stage when the gland is swollen
it will do not give it

any given with some but probably
to be due to the other.

all the applications are very common
in the gland. & some have become
Chronic and.

again is much plentiful in the 2nd
stage all these branches are
in the nerve itself. ^{at the root} nerves
or even again on

Cingulata, *Hydractinia*

Wre and. infusorian & new born 188

4/12/73

Anthus. agerimus

Alcedo. yal. P. P. P.

Caracina. Kef. o. Hydract. p. p. p.

Trochylus. Kef. Kef.



The rest of large usually commensal
with the gall-dweller, can be distinguished
in no manner with the small ones.

Zebrinae - Phaeae

from the

4. Paucipennis from good leaves drawn with the

3. *Phaeae* } *Phaeae* - *Phaeae*

+ *lunata*

2. *Zebrinae*, *oleae*, sharply defined

1. *Phaeae* ~~from the~~ *Phaeae* *oleae* *oleae*

Phaeae *oleae*

Phaeae

Kept in with a single case

Phaeae

When from *Phaeae* *oleae*

Paracet. and morphine subcutaneous inj.
Med. nemine. as Lin. got Kali. even I met
by phubler. Then the constant stream of
chlorine. Crops of candles in even legals
I stop the pain

28/11/72

above from

- 1st a stream of water - brownish
- 2nd a stream from above and
- 3rd a stream from the above the above

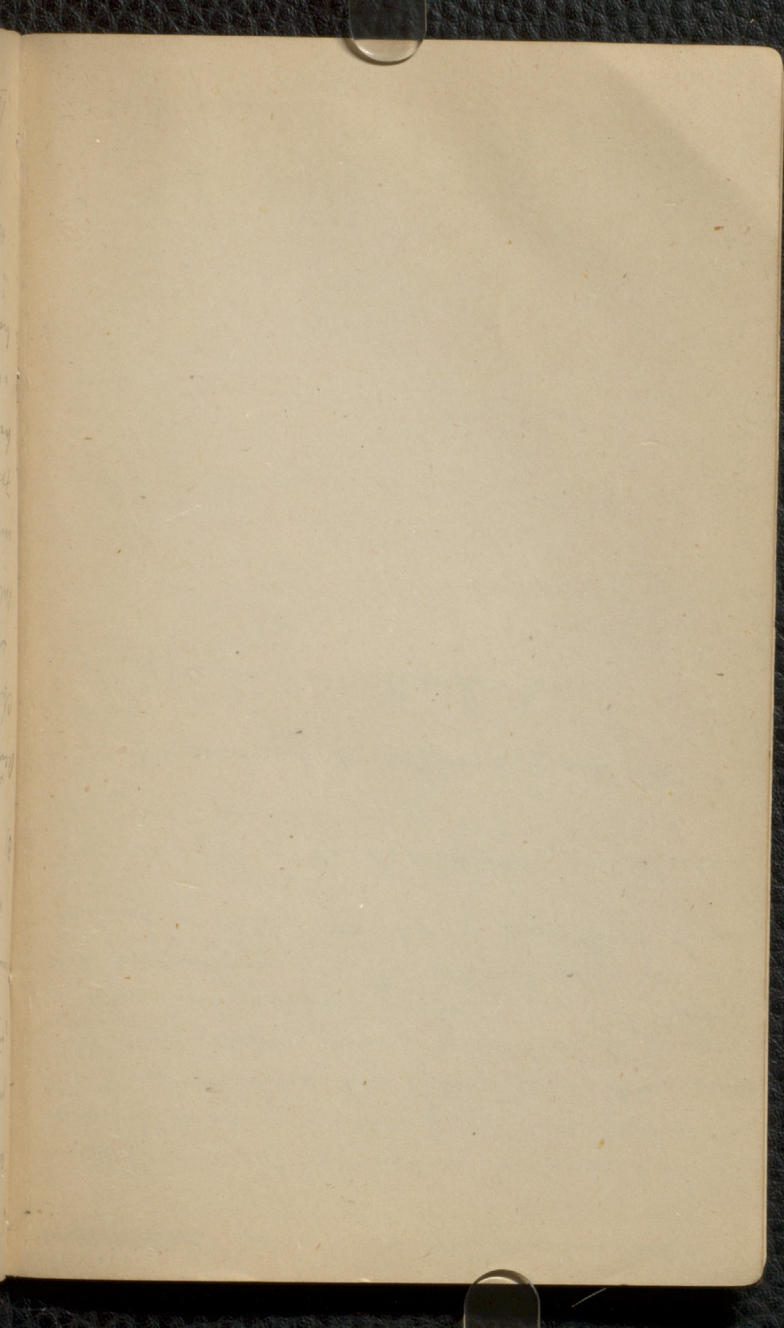
(3) Probathe: all from single

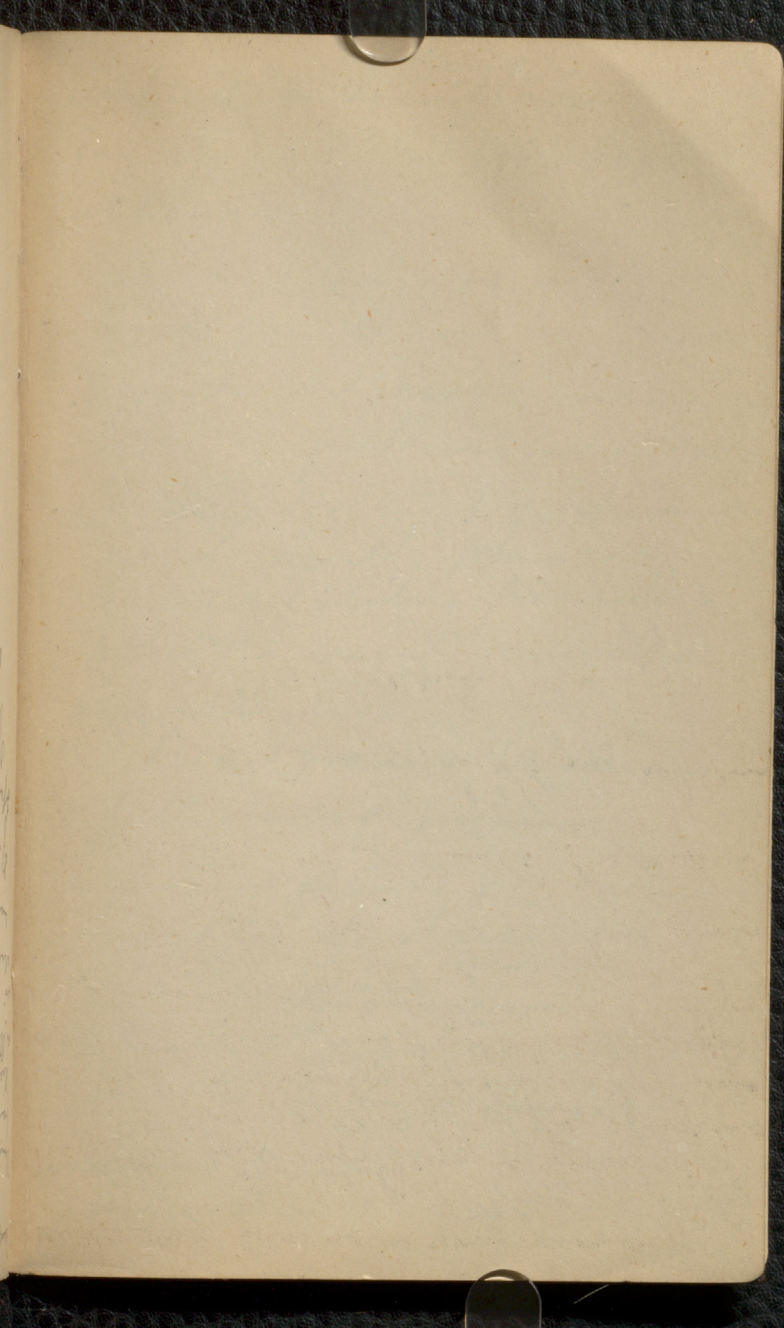
Acetate of iron

from above - a small amount
 about 1/2 from the above - (see above)
 other large from water under
 water often not colored

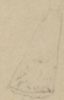
Formerly thought that the water near
 here was analogous to a 9th
 reached the iron - a pyrite stream
 here. The other large of the pyrite
 is contained in a short distance and
 the remaining part of the iron - a
 pyrite stream of the iron

Iron-bearing





~~Hyphomys~~



Hyphomys

22/11/75

Collected 7 specimens
at night of 11/11/75
Cecilia of 11/11/75
" " " "

19/11/75
Described 11/11/75; reproduction

for art. ones some weeks before
the usual time
all birth before the ch. can live
called her Abortives.

(1) open the membrane. high up as
possible (vag illur)
then use a feather applied in
a wound.

(when English does as int. this
along her person at hip. labor)

(3) Catheterization of the Uterus
not better for the ch & much
more for the mother - a metal
comes in sehr Graüf.

(4) A Tampon in Uterus. Not good

(5) Injection of cold water. Bad
for the women sehr oft zu Grunde
gehen.

(6) intra uterine injection of water
between ut. & Placenta.

(7) Tampon of vapor. with Charpie
They use it here only with placenta

power & occur when the cervix
is very narrow

(8) modern the cervix with an
instrument. Laminaria &
never used here now

(9) Scauzon. Drawing the breast
with. (Simple warm applications
& manipulation are suff. to force
the flow of milk in all cases)

Abortion when pelvis so narrow
that even a life-saving Ch. can not
be brought thro. Also where tumors
are present &c

Cervical cancer also demands it
Pregnancy with uterofibroids. Blood
in these cases much disturbed
~~for these reasons~~ Empty the bladder
& from the rectum lift the ut. up
adhesion of the uterus usually
in these cases - ut. are run - the woman
about themselves

1871/33

Unparalleled something of that
a month & women in danger
Method. Of the sword & feather.

Capillary surface of kidney

8/11/73
Cancer (Adenoma)
Human kidney of human
Prostate gland. The measure of cancer.

Post-lymph

Epithelium (c) appeared. fixed

Epithelium. developed

Epithelium + case. + med.

Epithelium (c) relation proportion

Epithelium

Epithelium + perist. + firm

Epithelium

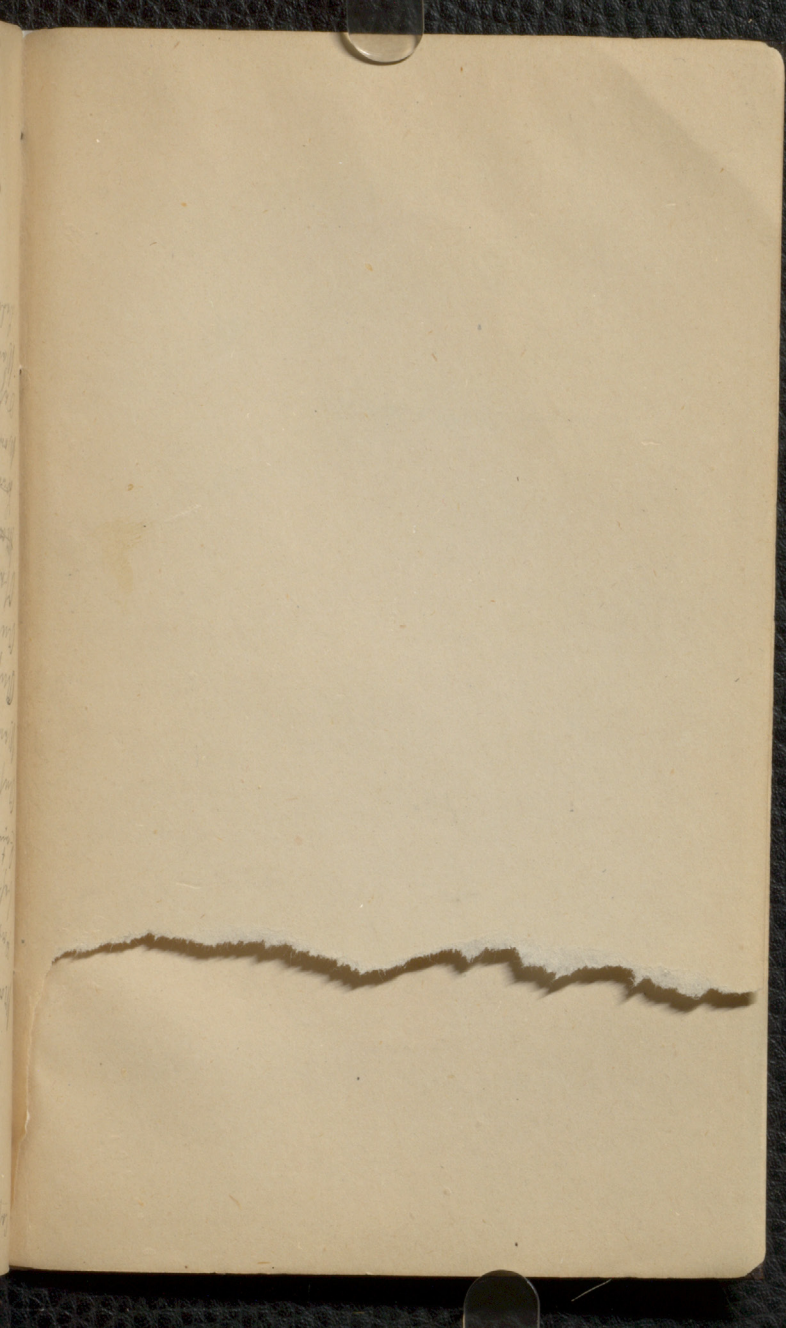
Epithelium

Epithelium

Epithelium + case. + med.

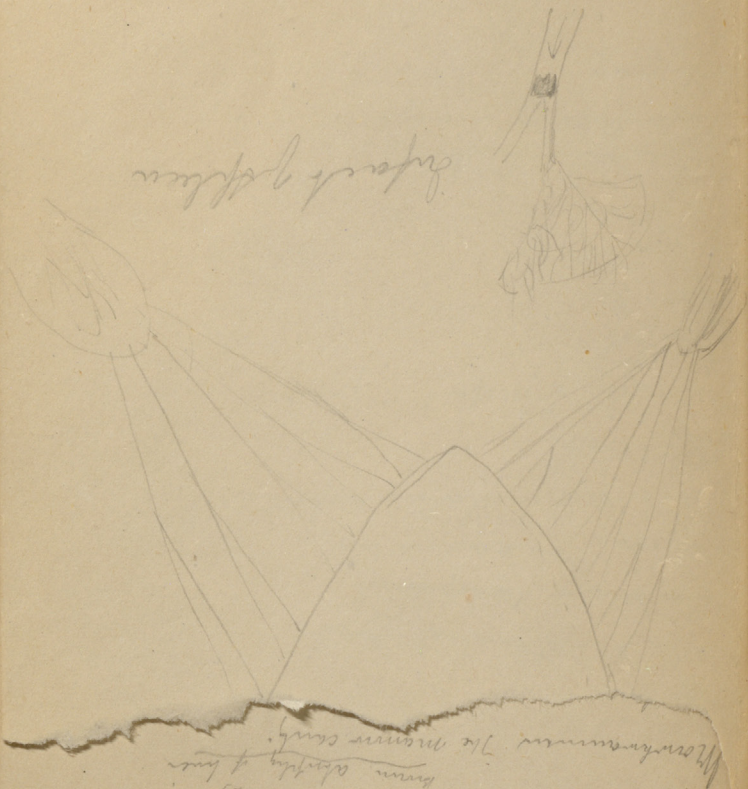
Epithelium

Epithelium (c) in case. + med. + firm



Capillary network of kidney

See also: . v. Cauer (Lombard)
 8/11/73
 Brown study of liver
 Microscopical The pancreas cany.



Capillary network

