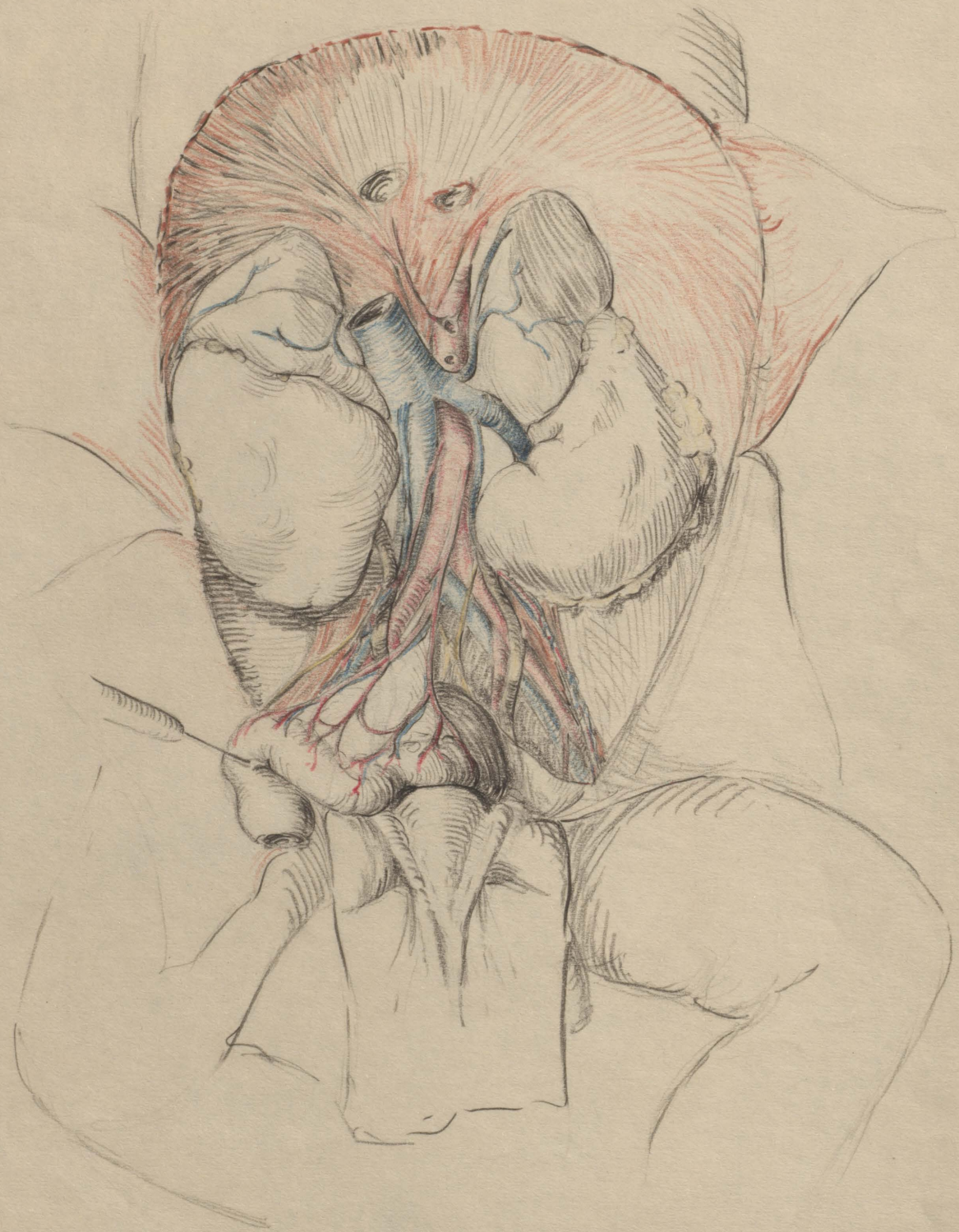


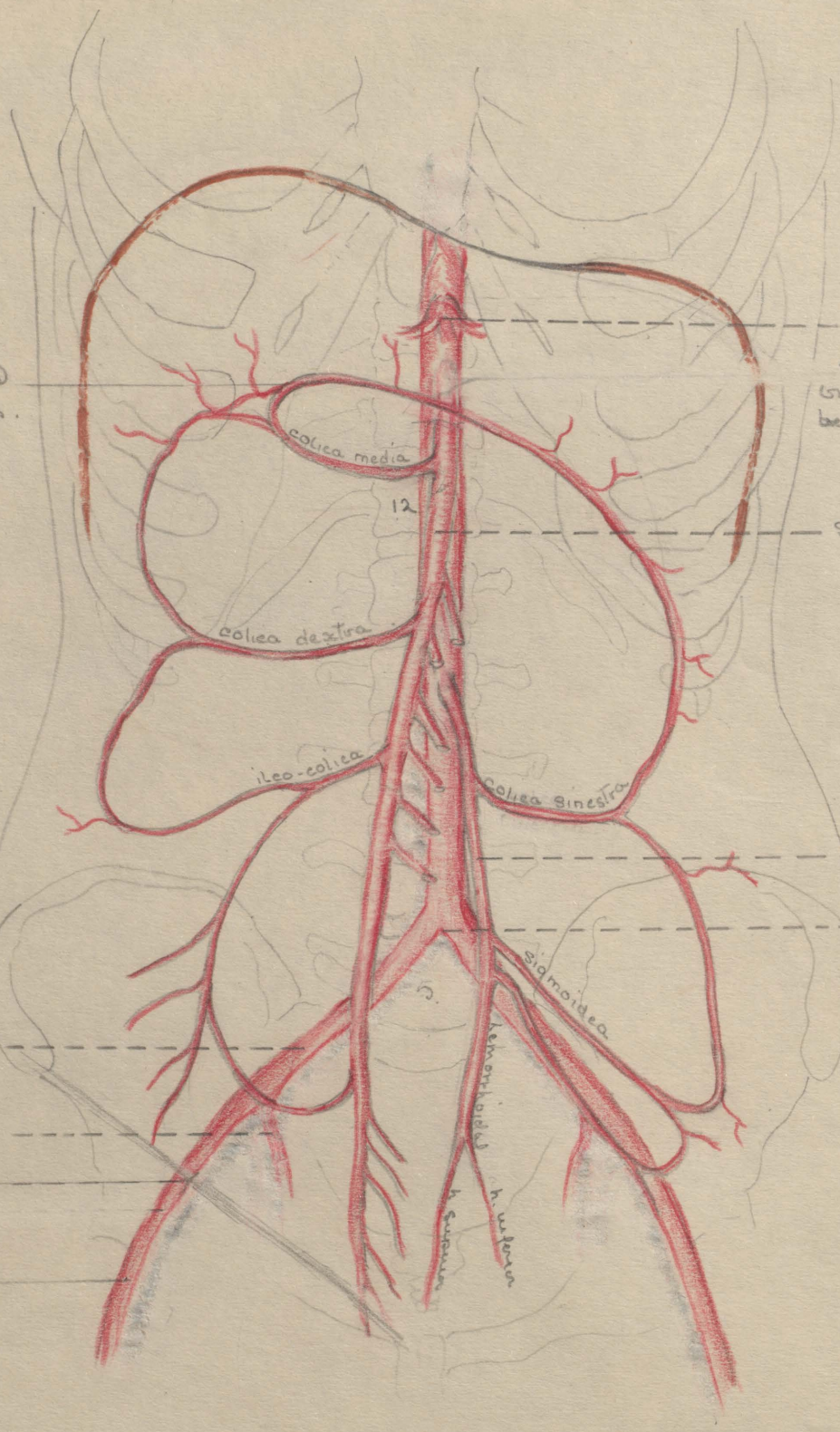
Female baby. - 52 days old.  
Feb. '32.





Male Baby - still born -  
Feb. '32.





The colica media and sinistra are lifted up.

colica arais. A. colica arais branches below 12<sup>th</sup> rib.

Superior mesenteric branches off from the aorta below the 12<sup>th</sup> vertebra.

Superior mesenteric

Inferior mesenteric

Location of the aorta below 4<sup>th</sup> lumbar

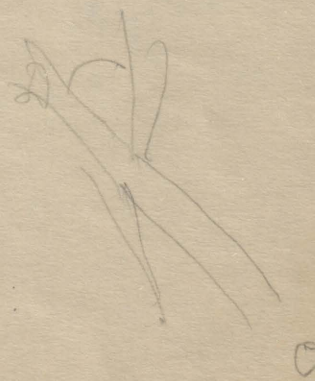
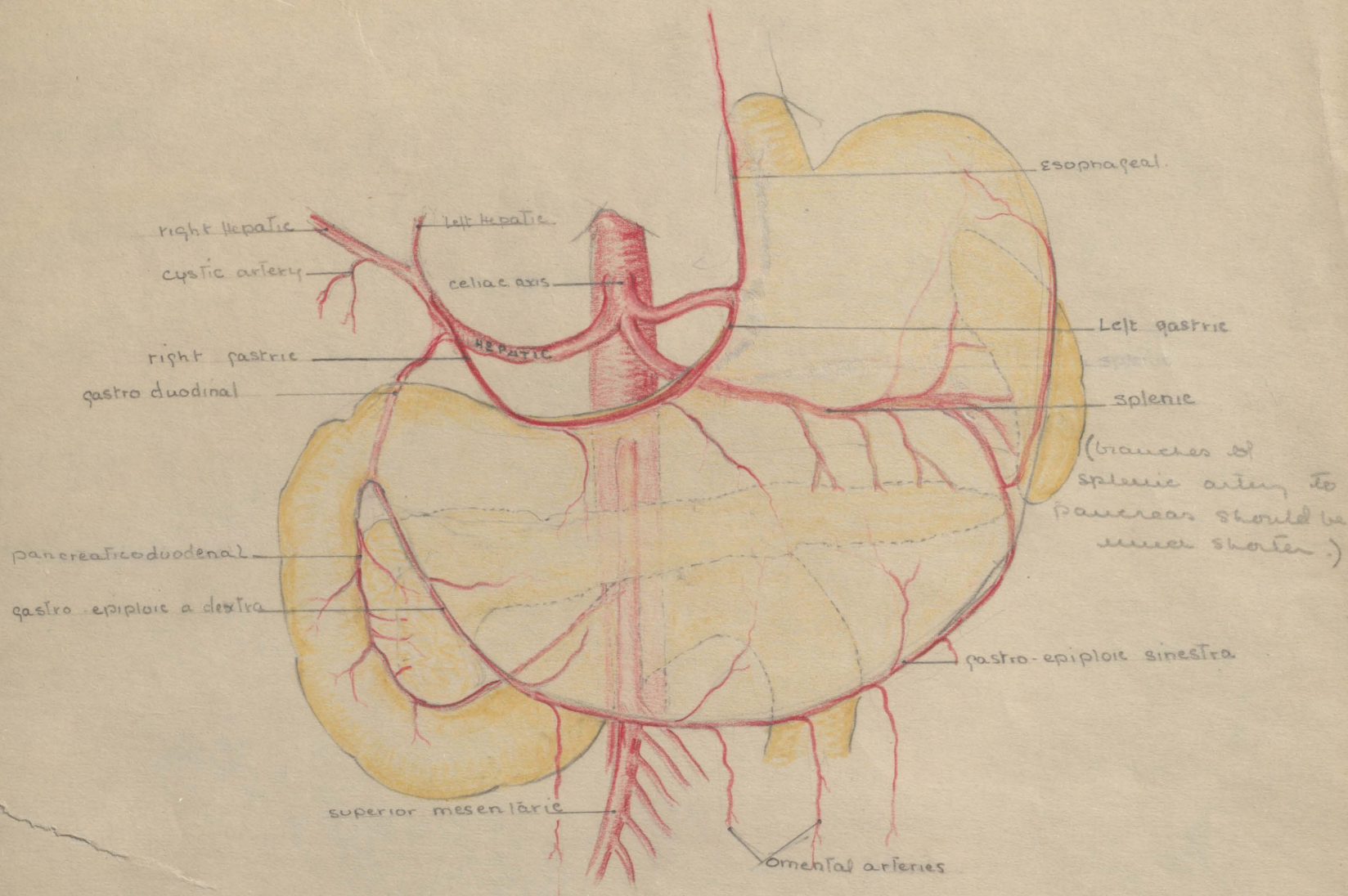
common iliac

Internal iliac or hypogastric artery  
External iliac

femoral

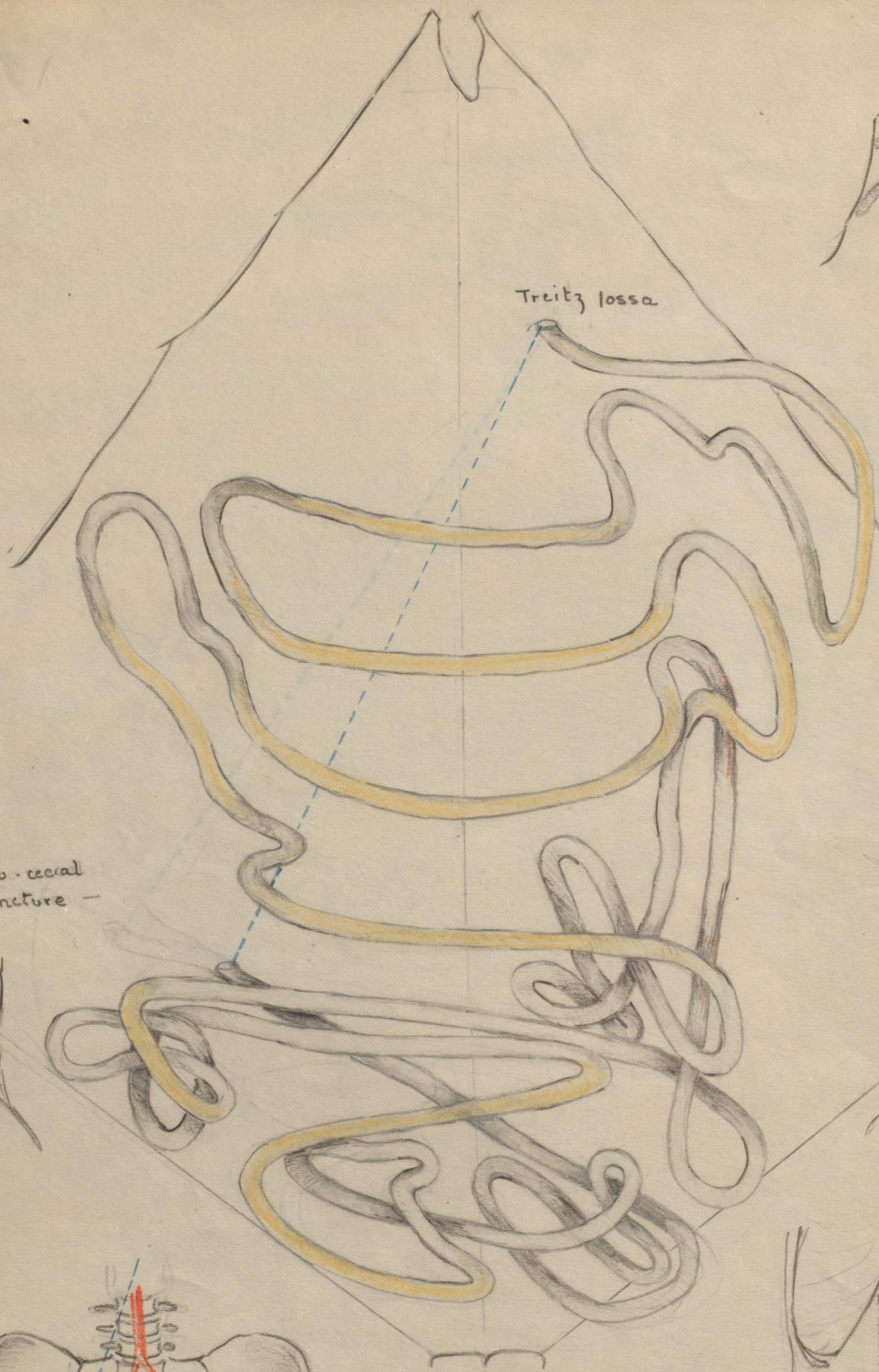
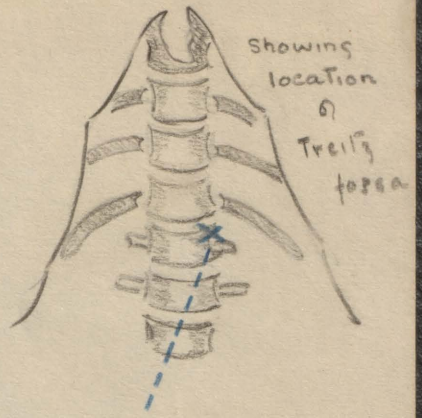
The medial hemorrhoidal artery branches from the hypogastric, and anastomoses with the inferior & superior hemorrhoidals at the rectum.





©

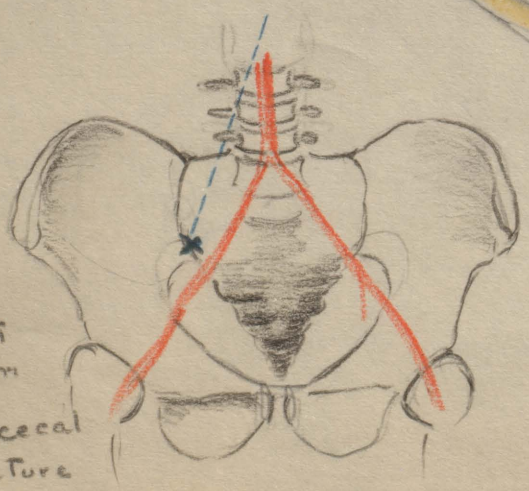




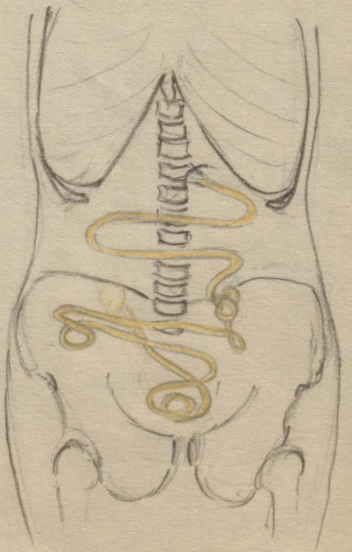
Treitz forsa



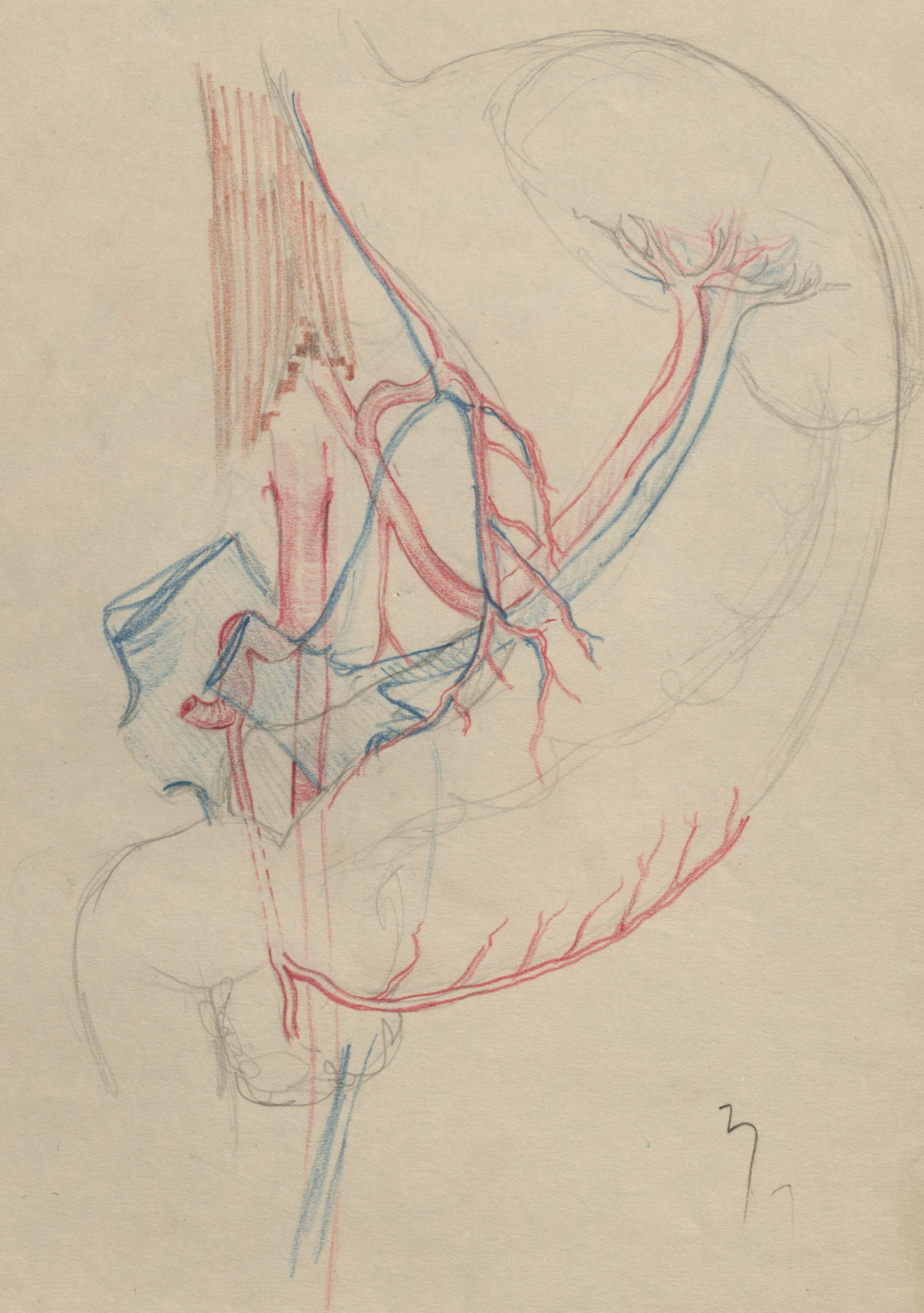
Ileocecal junction



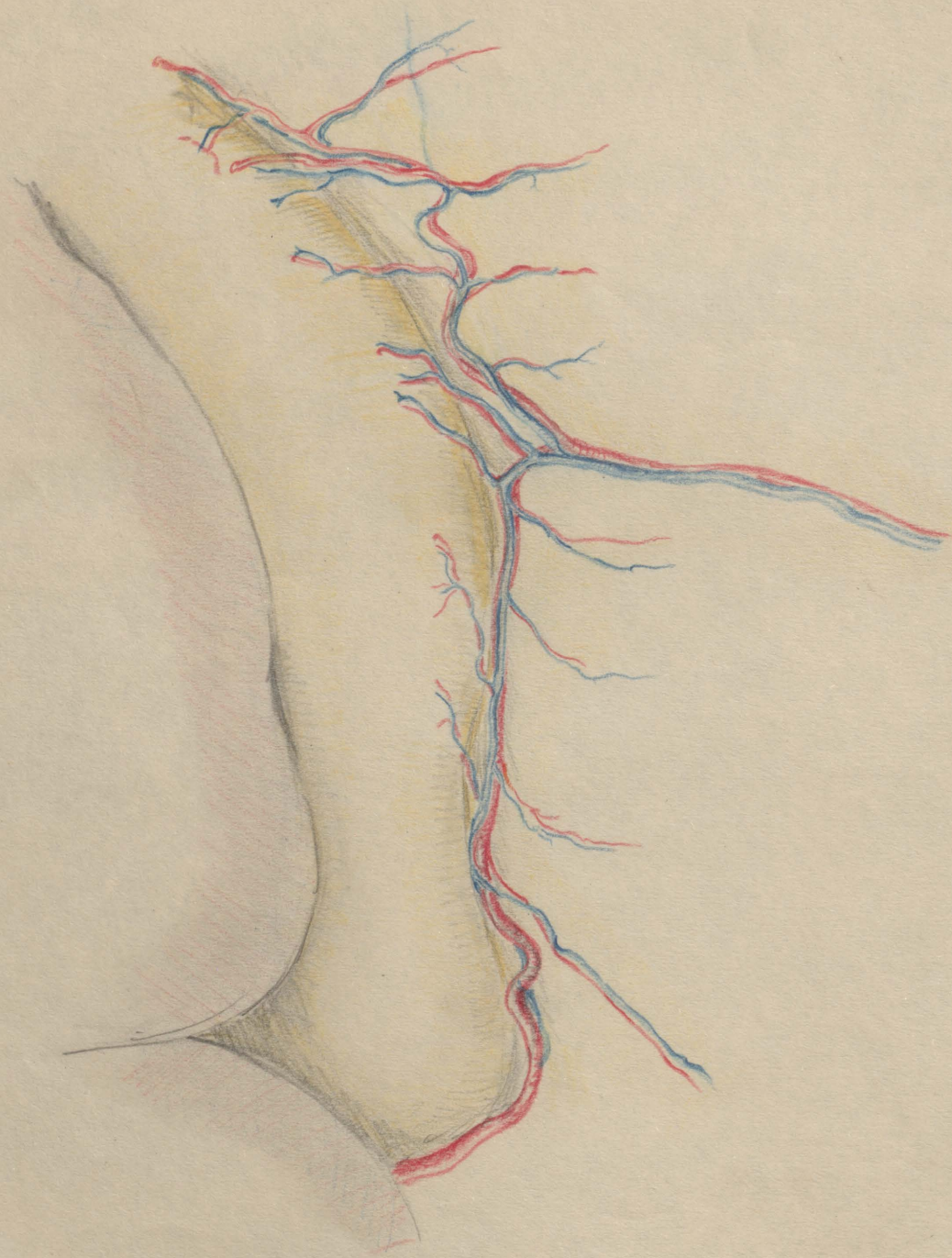
Showing location of ileocecal junction



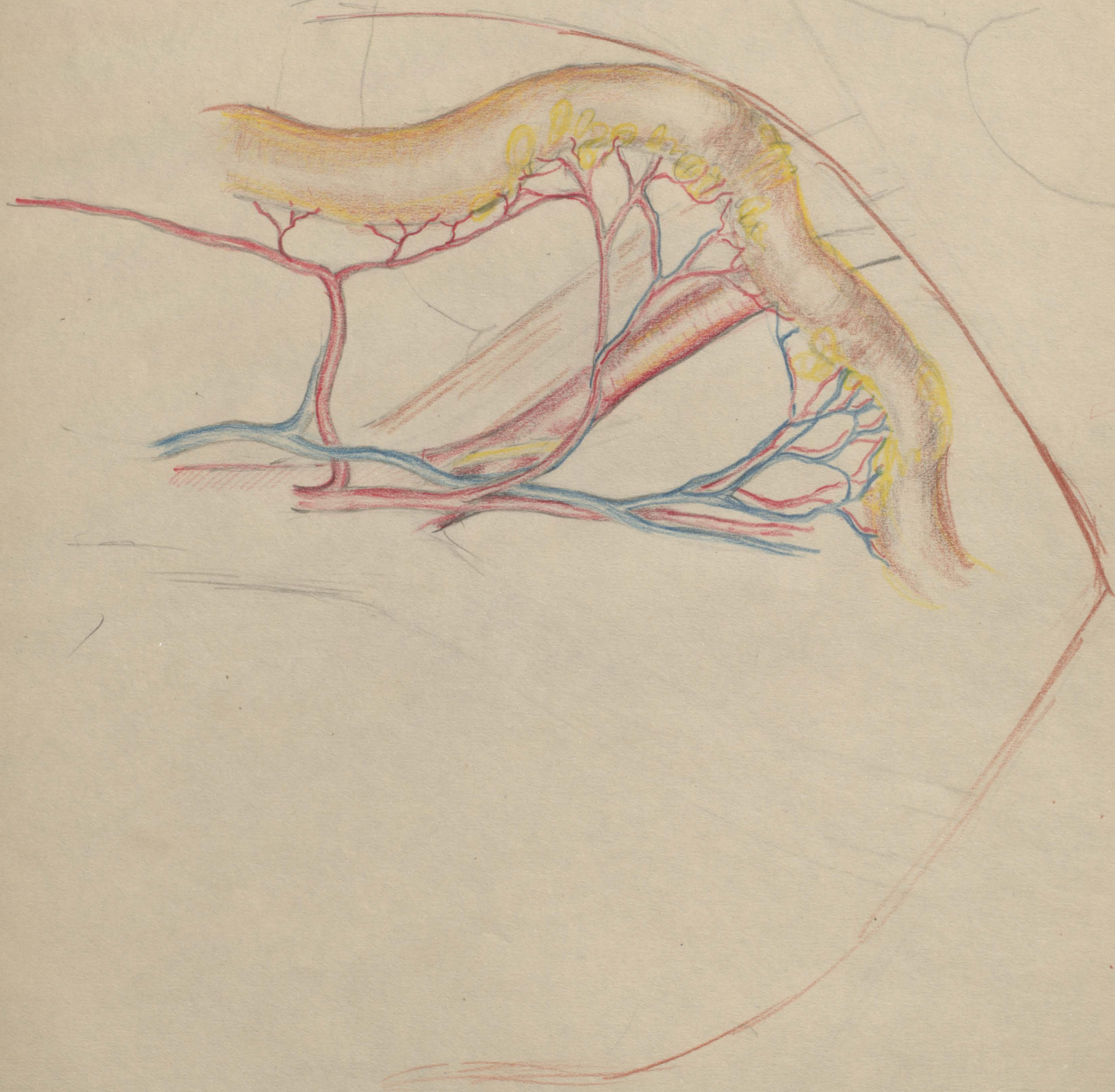






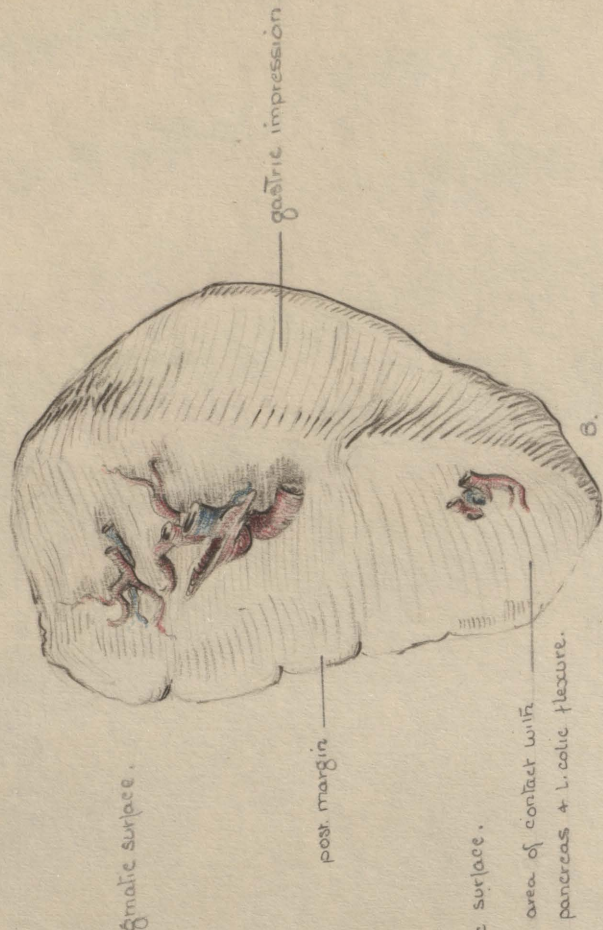
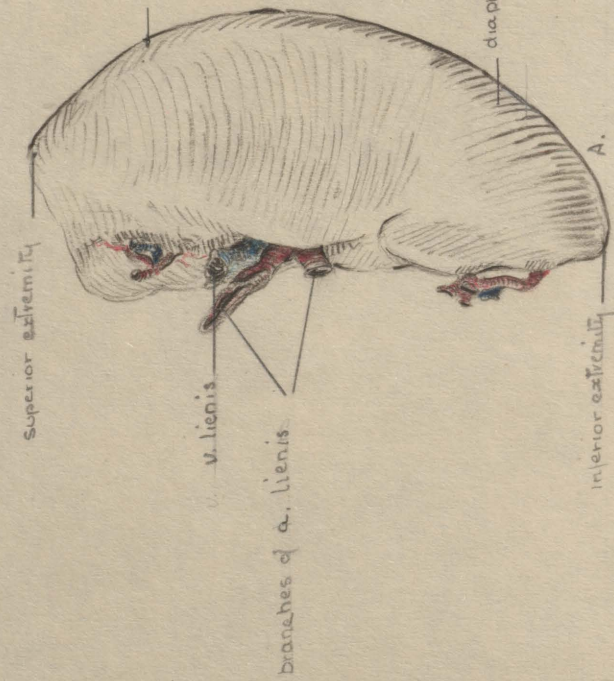




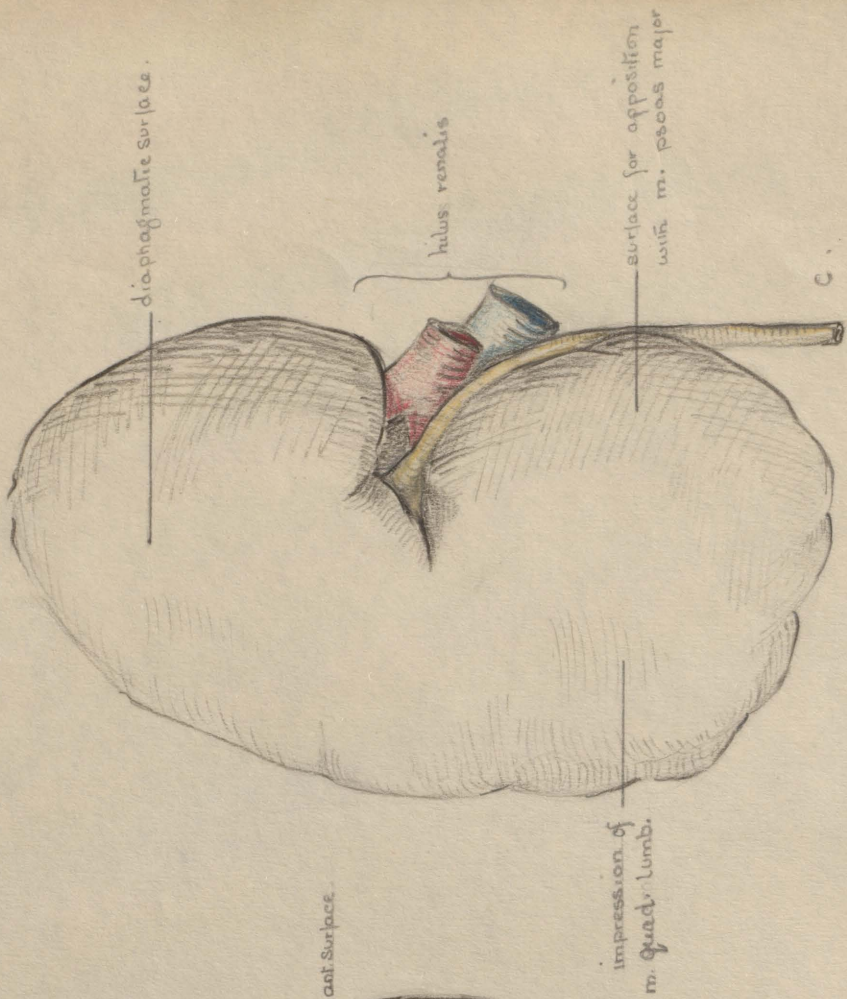
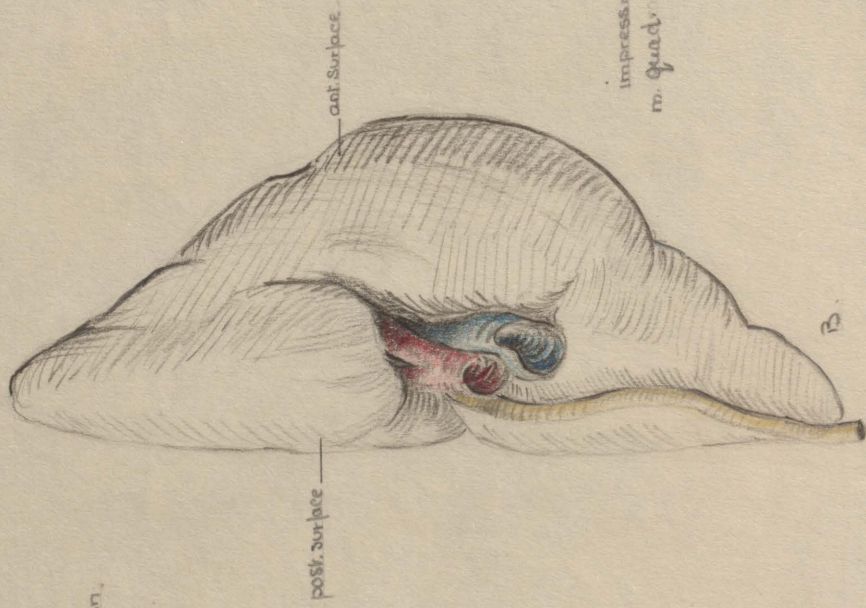
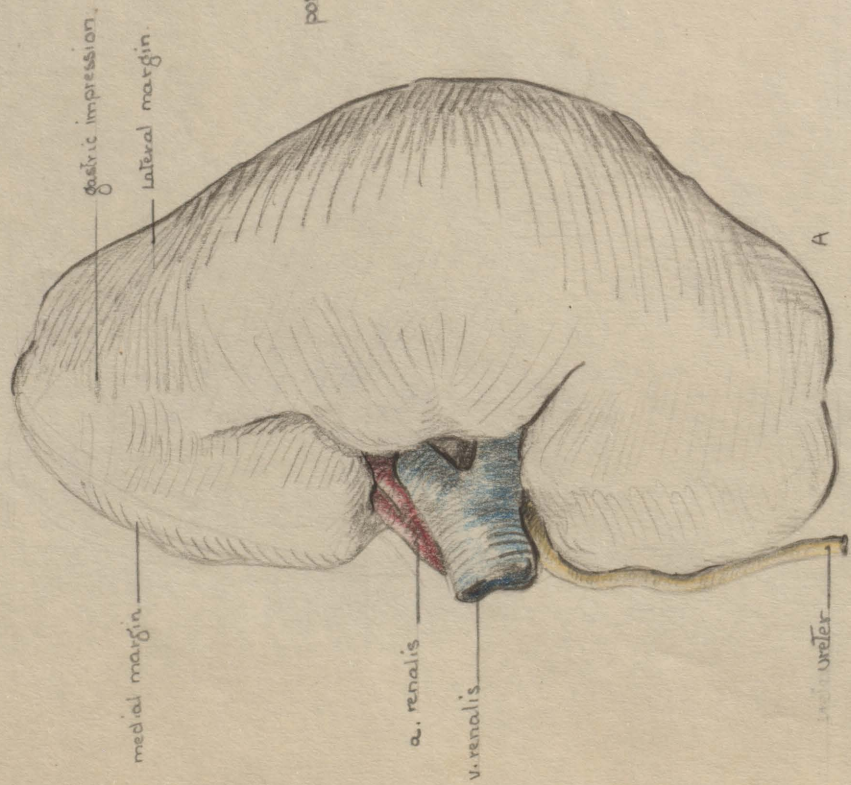




Spleen — A. ventral view. (position in body) B. medial view.  
 Pl. 32.

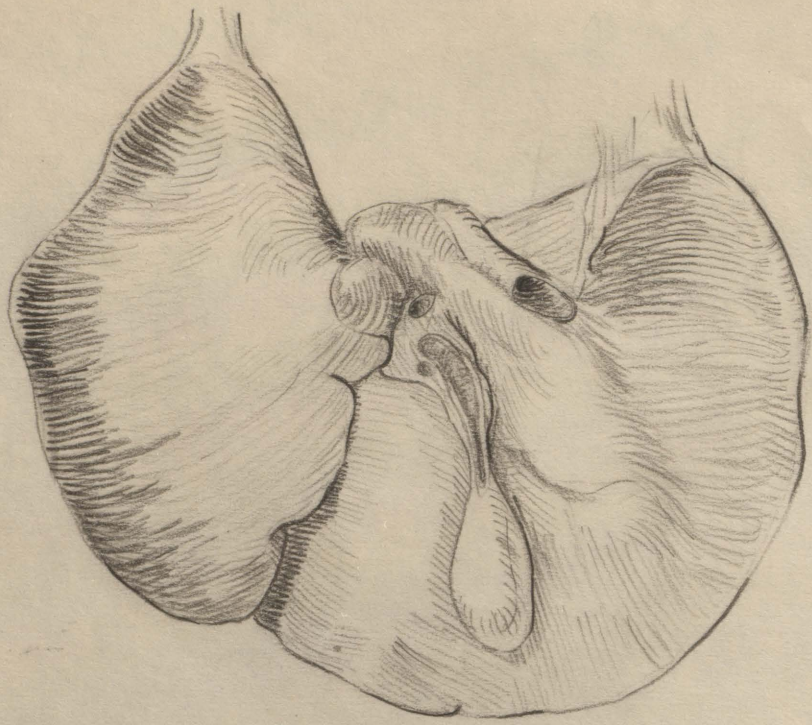




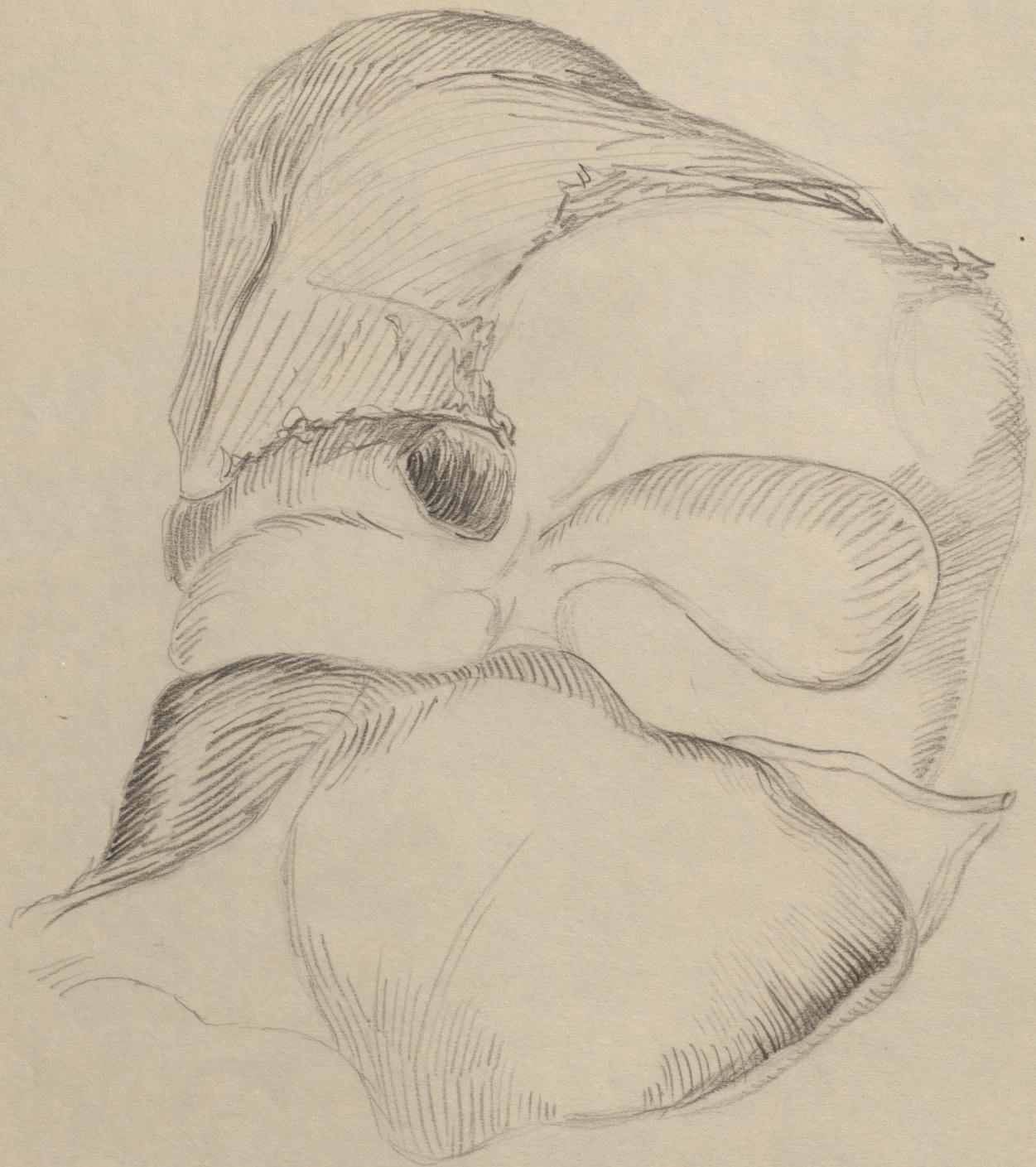


Left kidney A ventral B medial C dorsal view  
 II. 32.

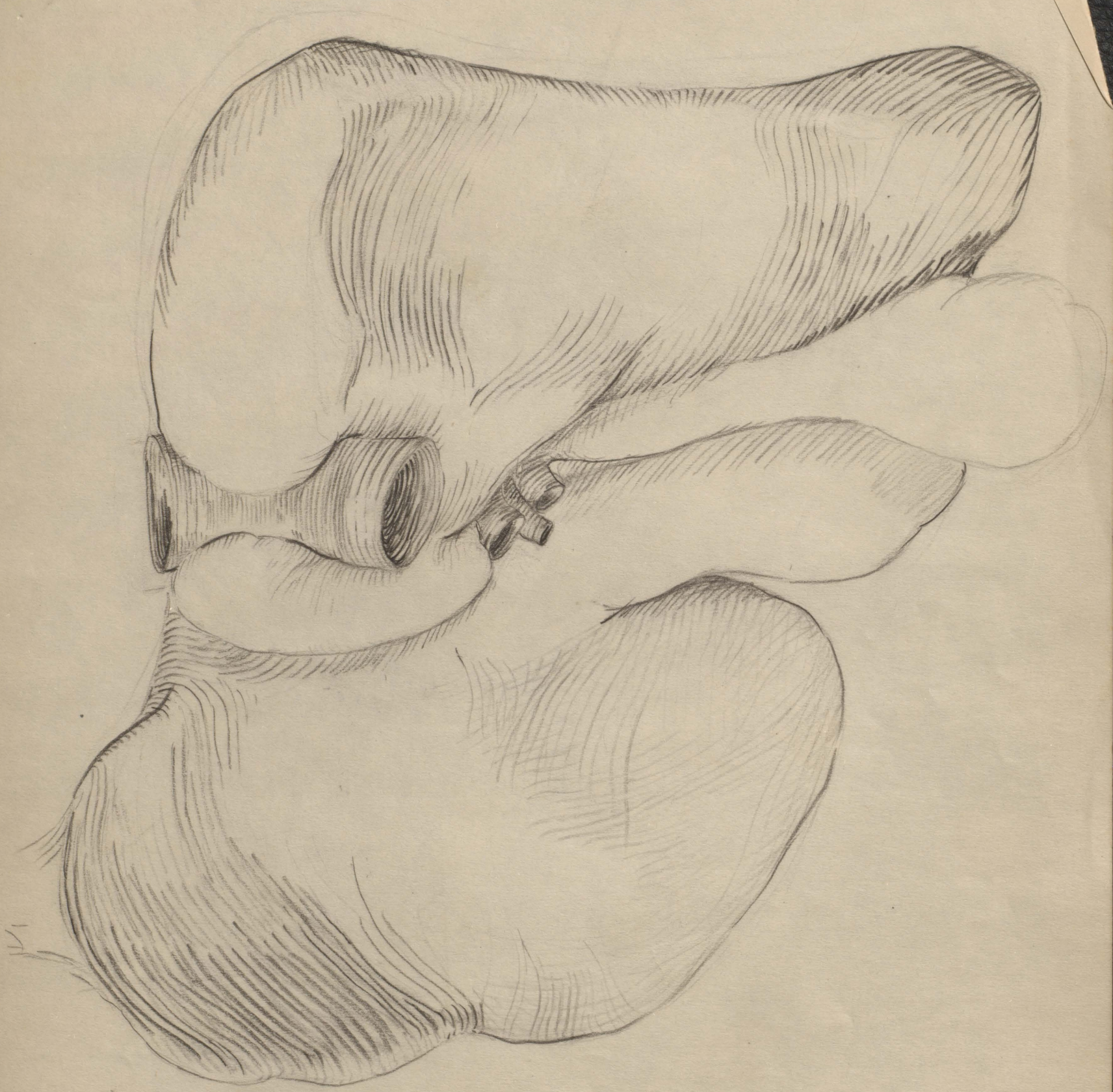




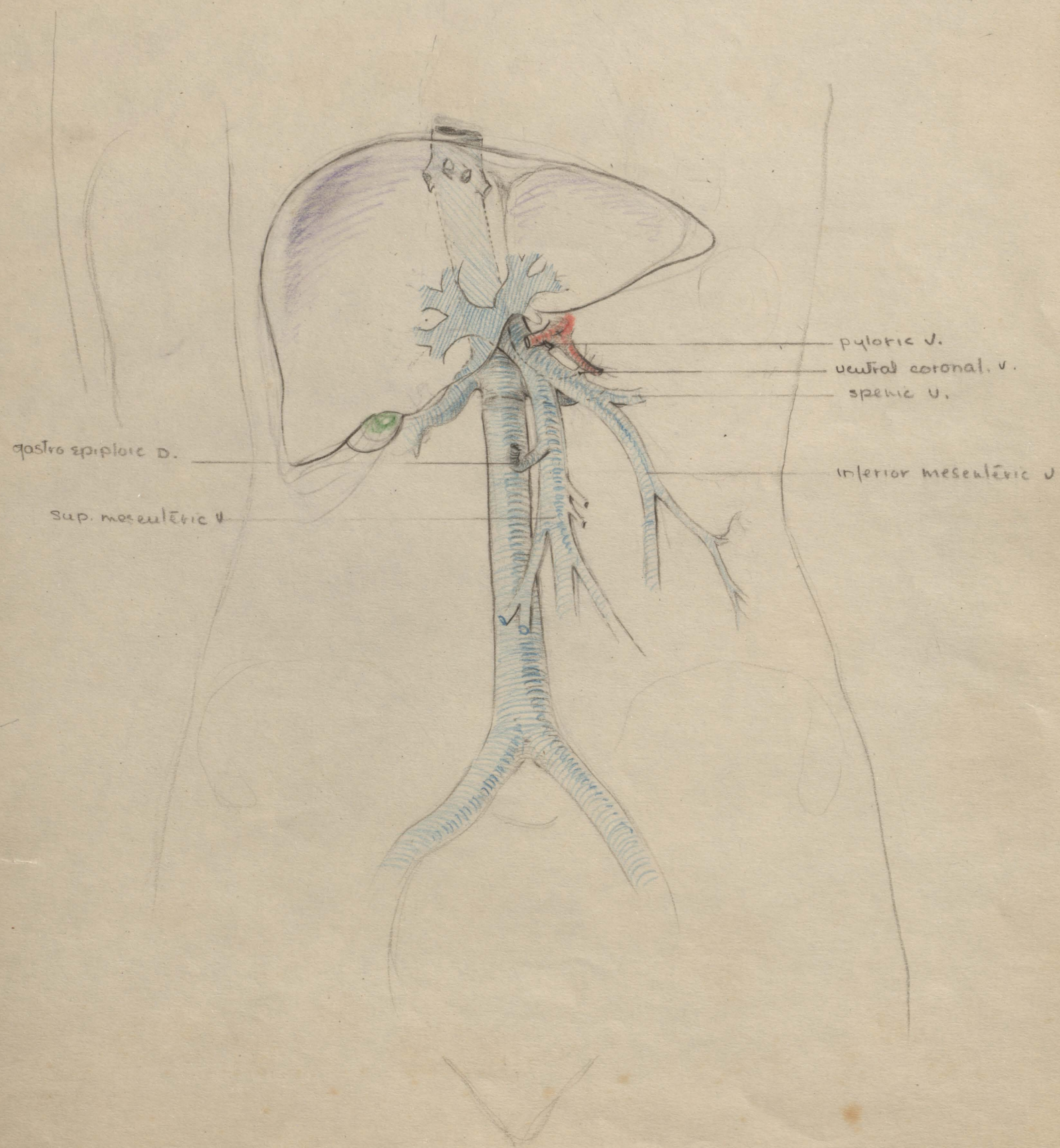














Specimen no 12764 VIII Female White 14 days.

Dr. Blashman -

Clinical. Unable to retain food for day  
of birth.

C. Impression. Duodenal atresia, dehydration.

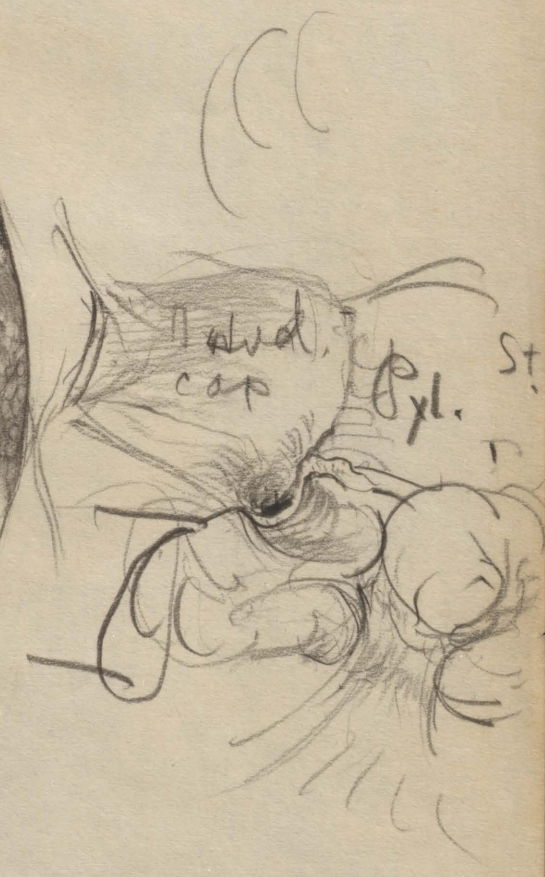
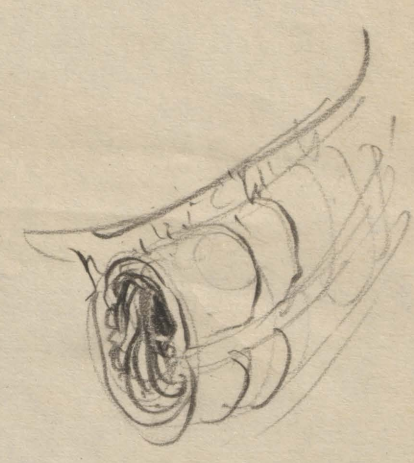
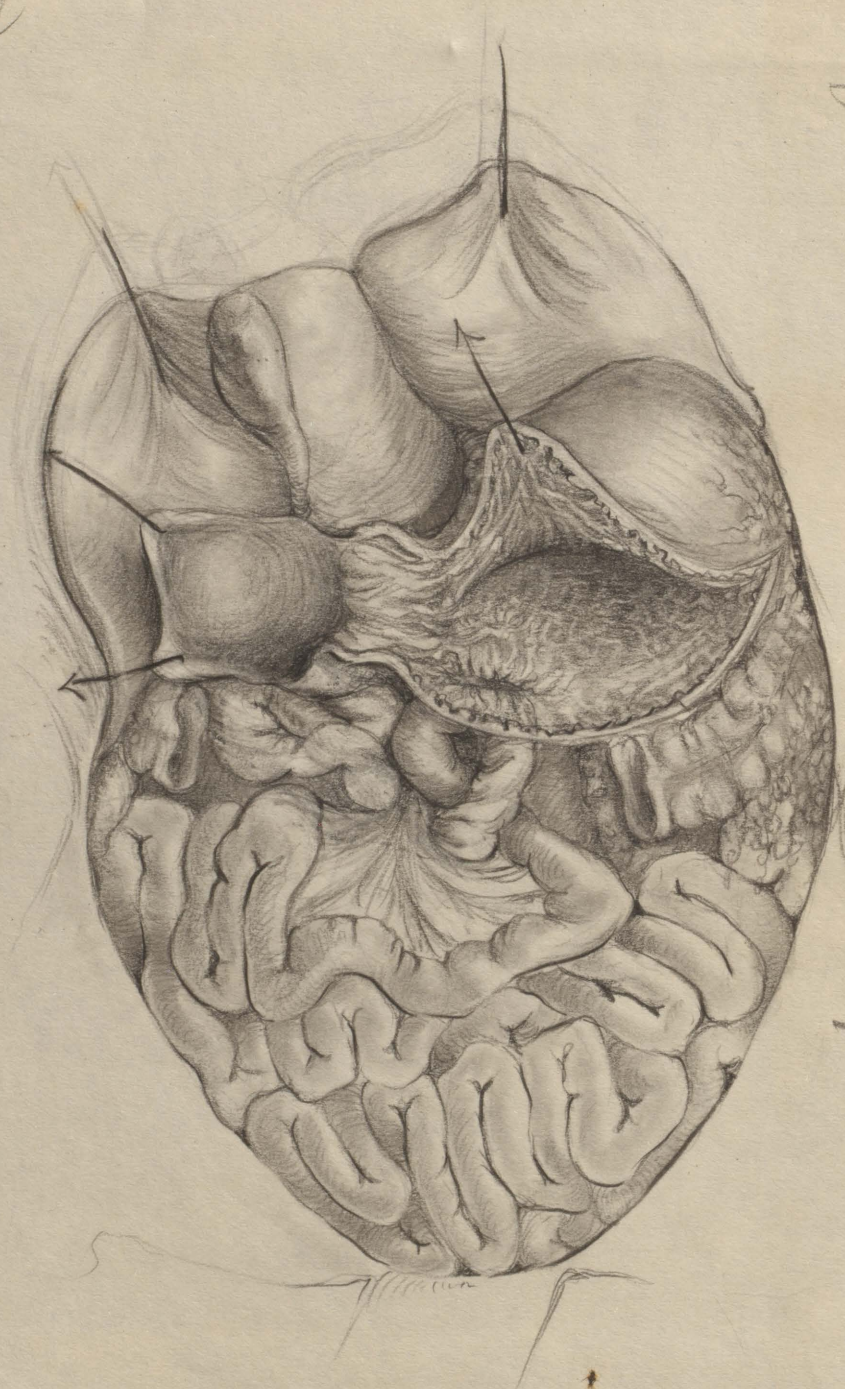
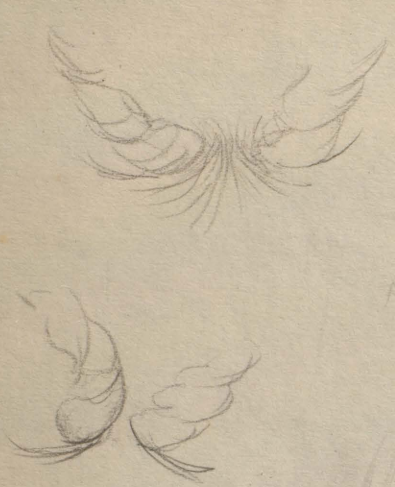
Abdominal cav. no peritonitis  
Necrotic omentum -

First part of jejunum - arrested. with post wall  
of st. above pylorus. behind greater curve. Small  
perforation above suture line  
caecum lies in midline over mesentery  
and 5 intestines. passes at base of  
mesentery <sup>ascending</sup>, duodenum making complete  
obstruction.

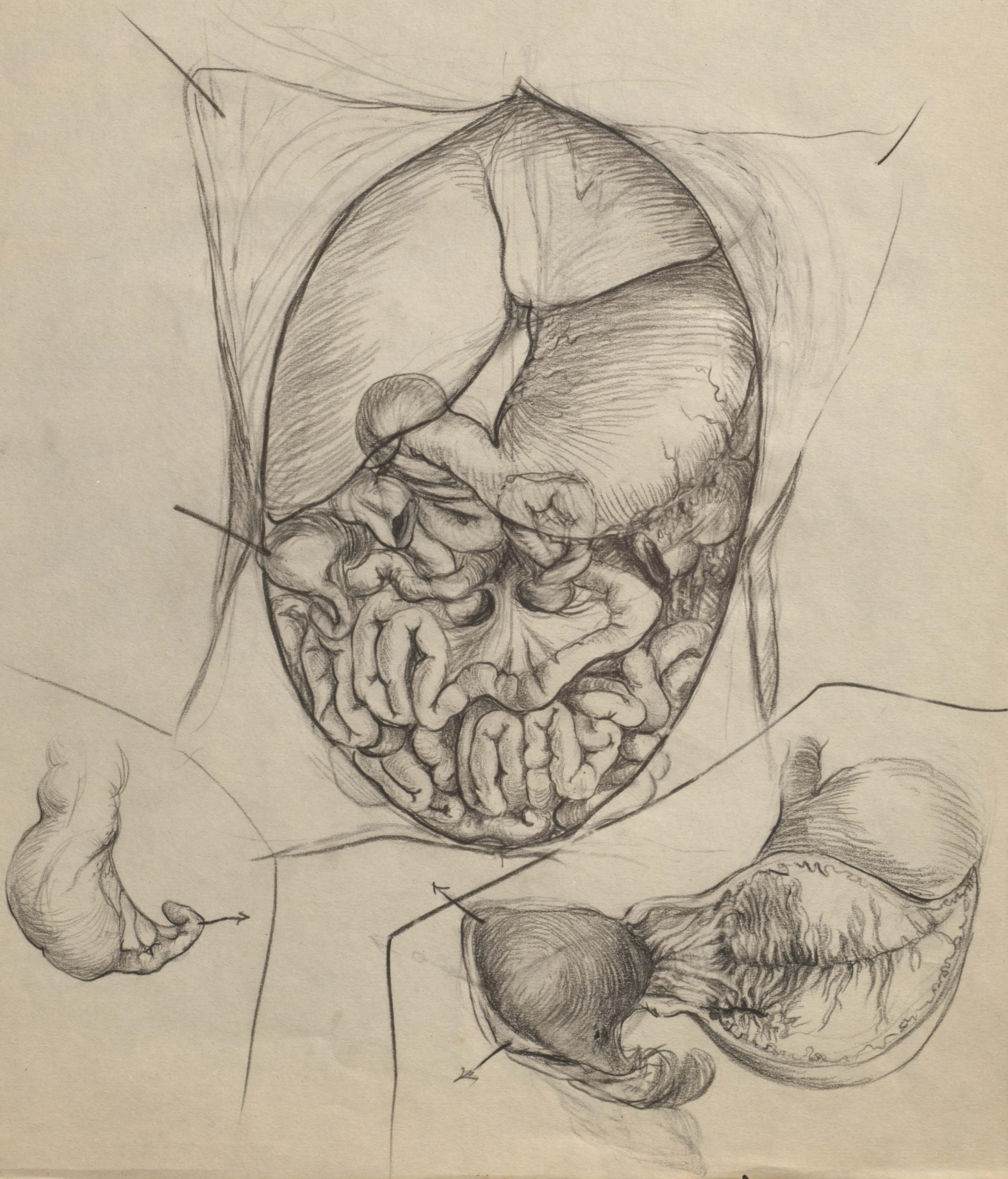
above obstruction duo = 2 cm.

The whole of the duodenum seen to have  
passed thru a hole in the base of mesentery  
been open of perit. cavities

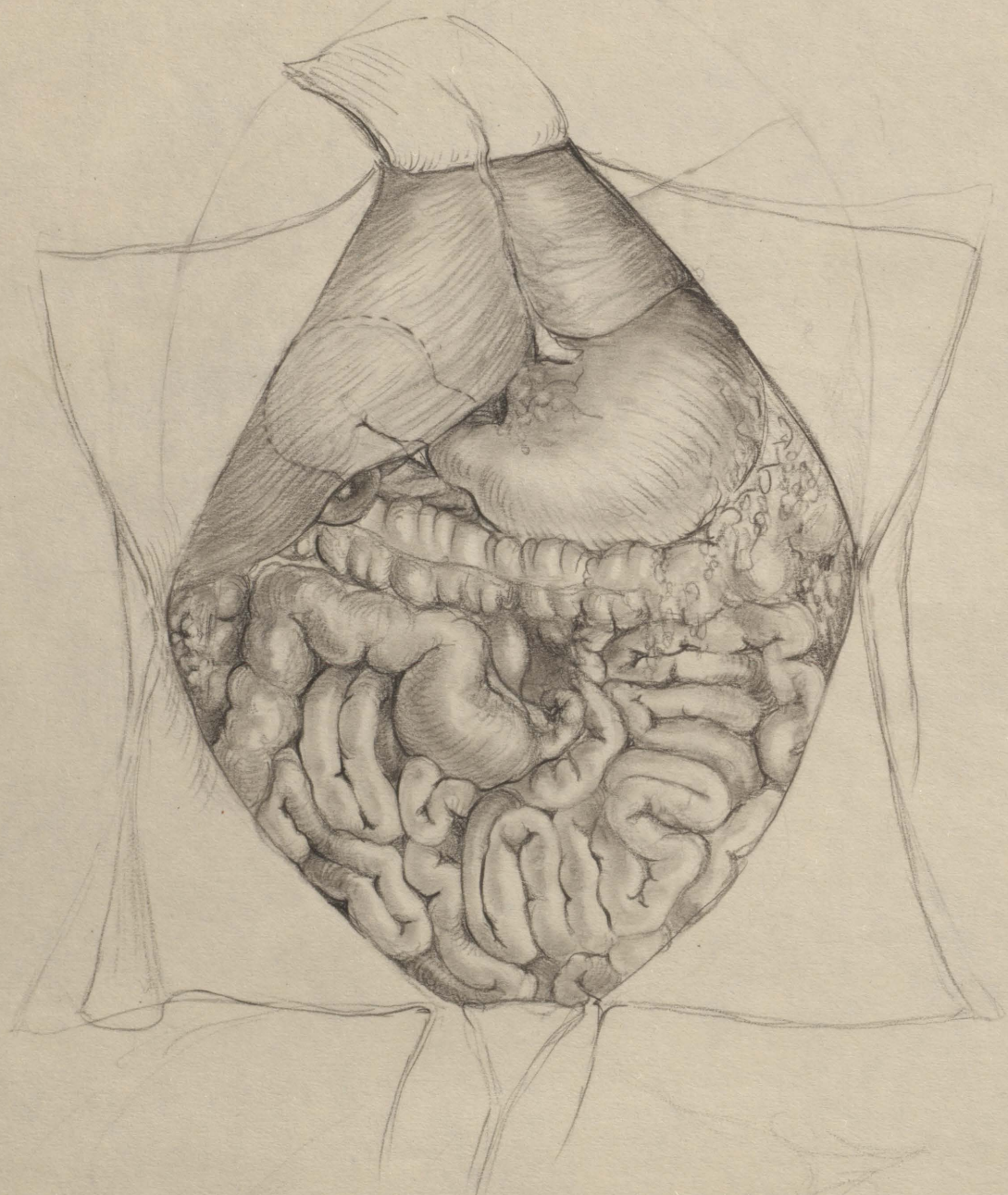




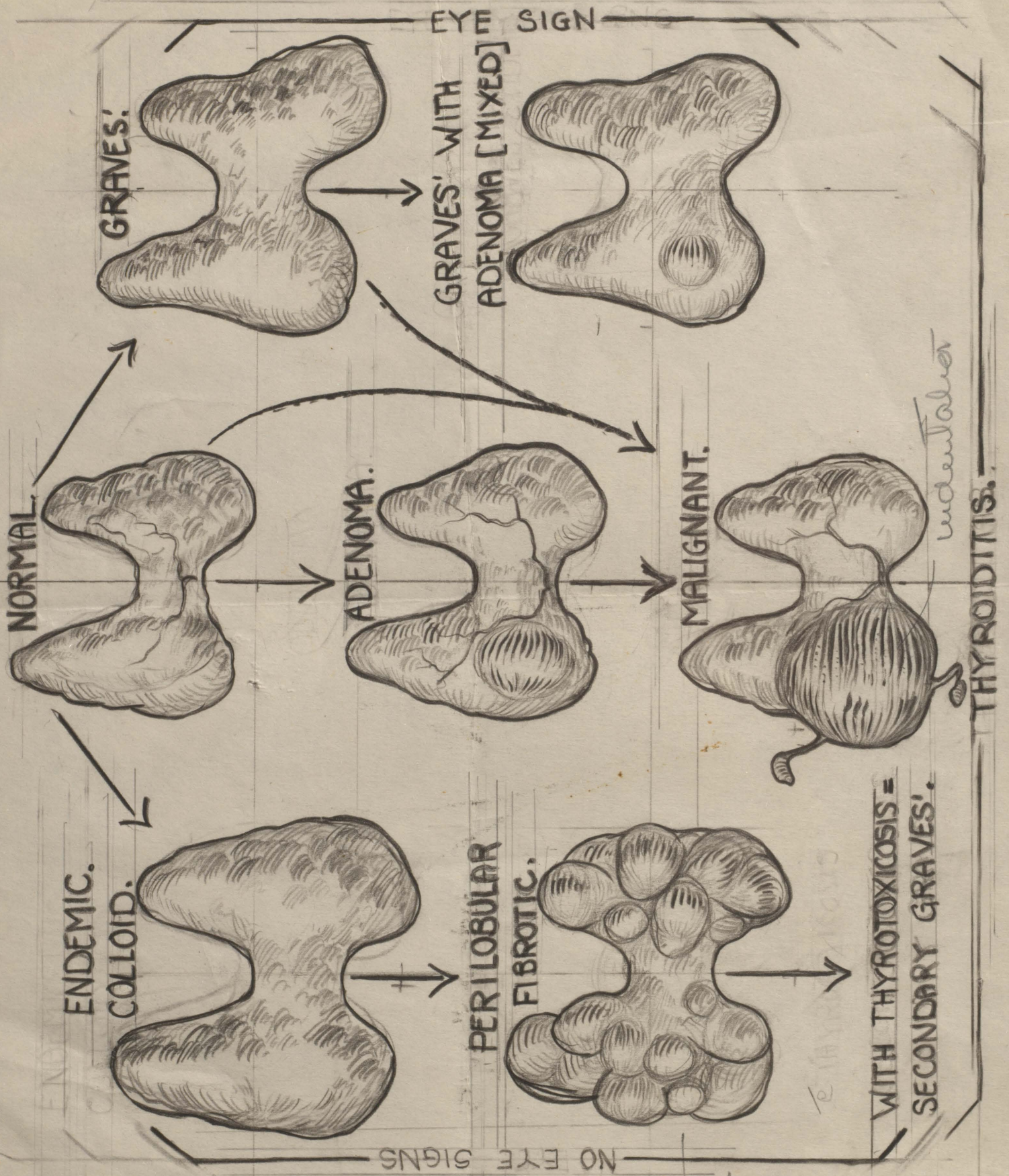








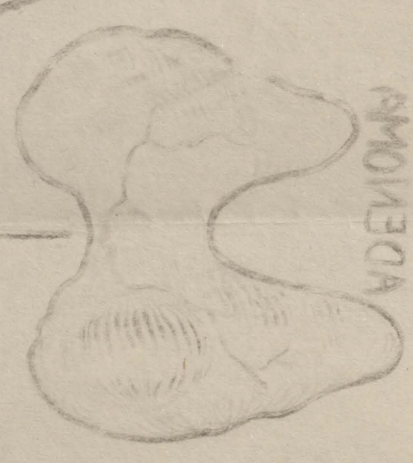
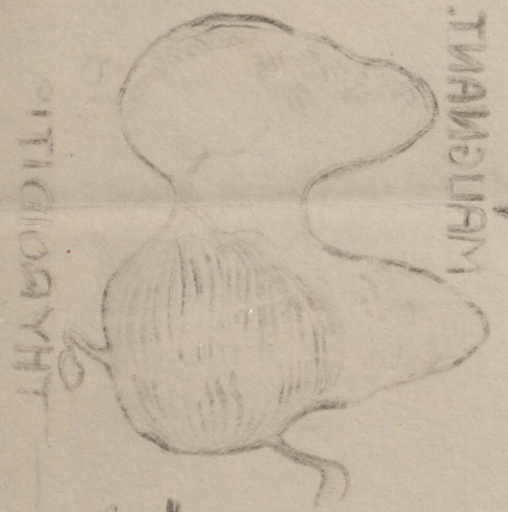
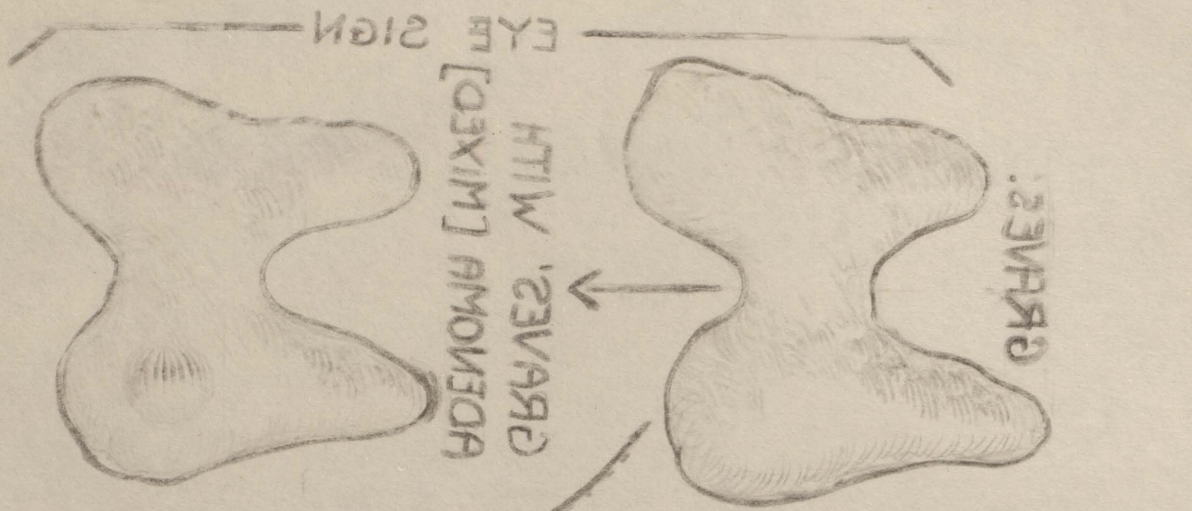




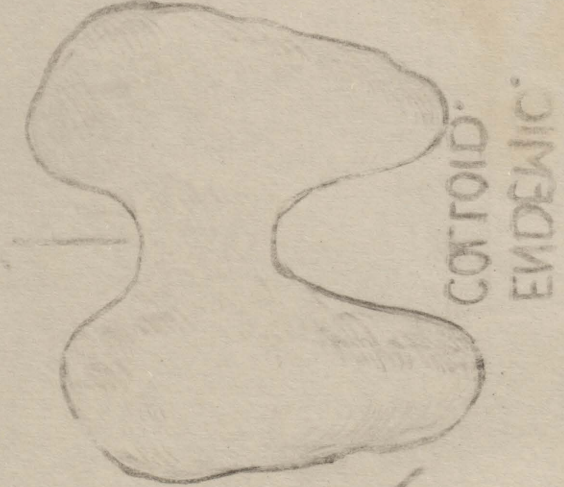
Shorter  
Bradets

Ward  
Megala





SECONDARY GRAVES WITH THYROIDITIS



NO EYE SIGN





hand cupped,  
+ babies face shorter.







Shoulder  
out soon  
further

and  
behind  
arm.





