



MSO 1080

1



CC&F. 142 LONGUE POINTE PLANT. CANADIAN CAR & FOUNDRY CO., LIMITED.

6 1080

1



CC&F. 141

LONGUE POINTE PLANT. CANADIAN CAR & FOUNDRY CO., LIMITED

6 1080

1



CC&F. 140

LONGUE POINTE, PLANT. CANADIAN CAR & FOUNDRY CO., LIMITED

6 1080



CC&F.139 LONGUE POINTE PLANT. CANADIAN CAR & FOUNDRY CO., LIMITED

6 1080

1

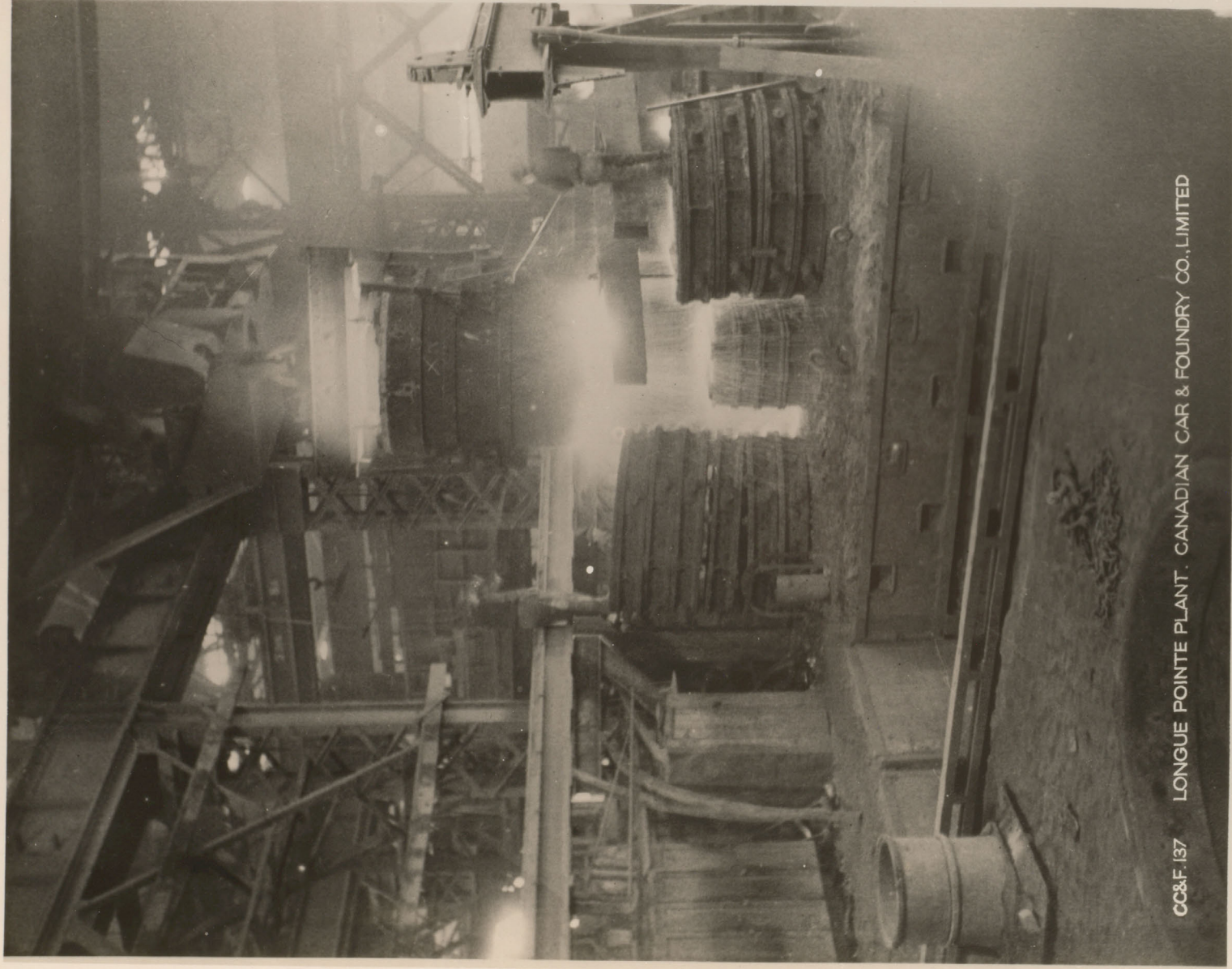


CC&F. 138

LONGUE POINTE PLANT. CANADIAN CAR & FOUNDRY CO., LIMITED

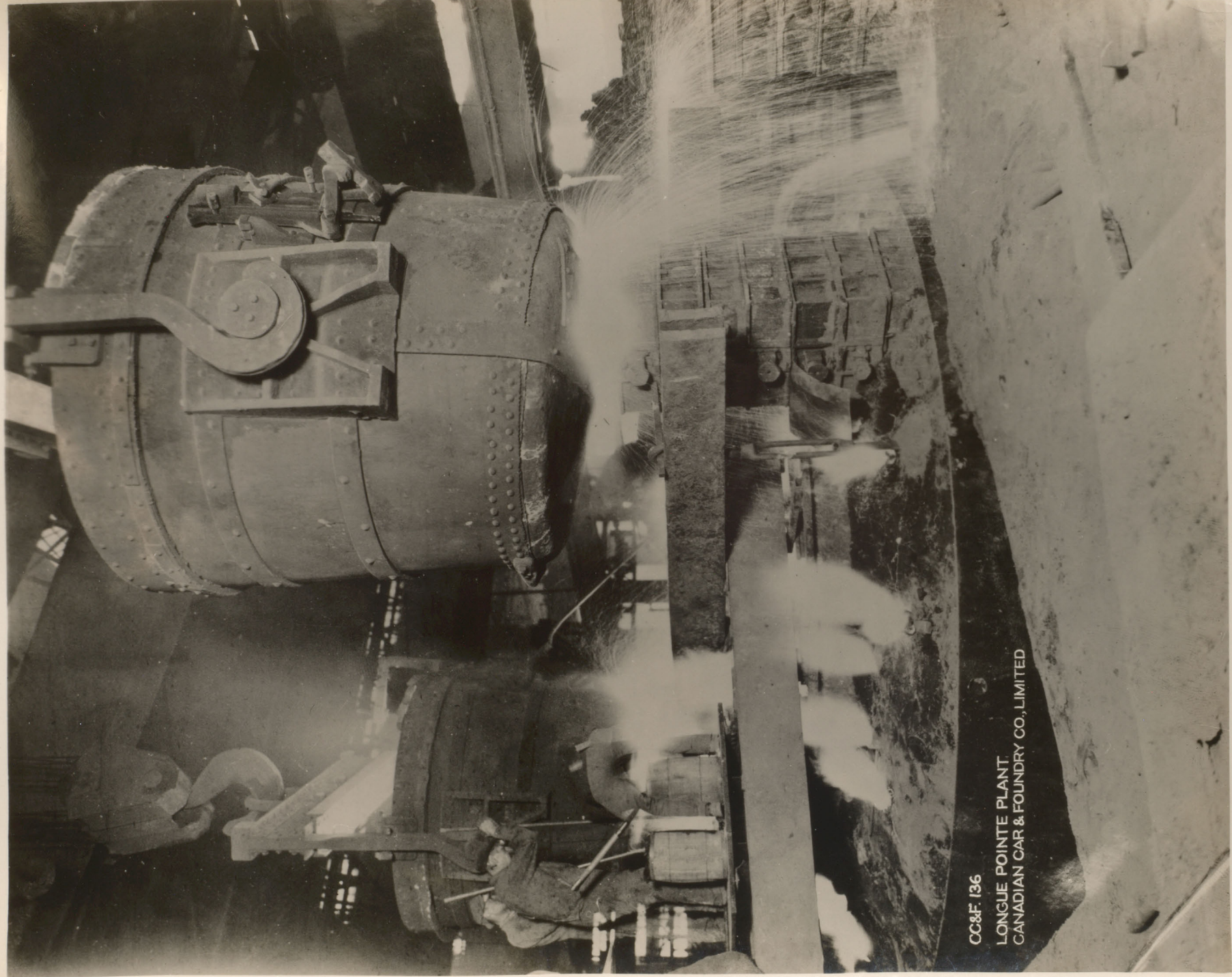
6 7080

1



CC&F. 137 LONGUE POINTE PLANT. CANADIAN CAR & FOUNDRY CO., LIMITED

6 1080

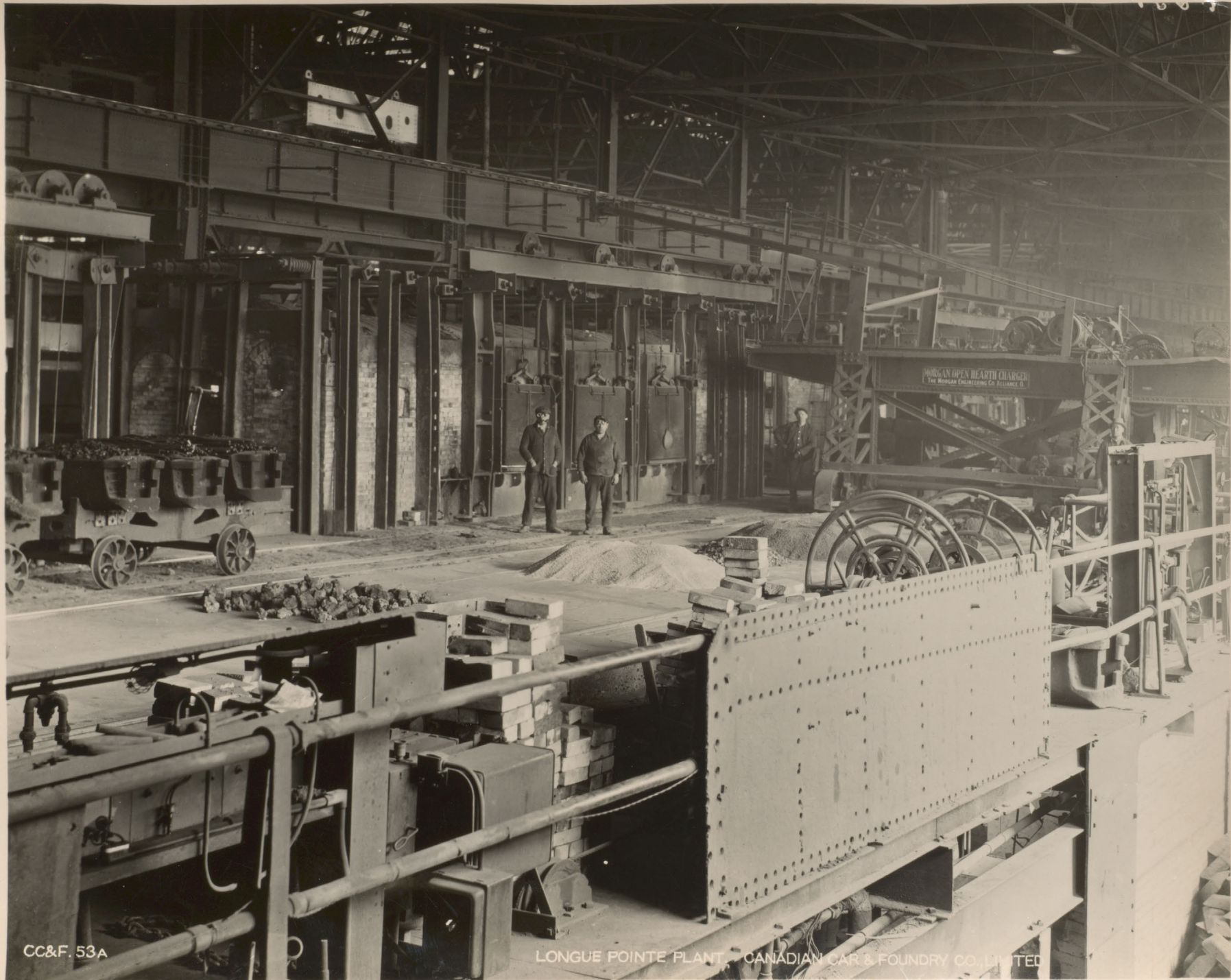


CC&F. 136

LONGUE POINTE PLANT.
CANADIAN CAR & FOUNDRY CO., LIMITED

6 1080

1



CC&F. 53A

LONGUE POINTE PLANT, CANADIAN CAR & FOUNDRY CO., LIMITED

6 708



CC&F. 53

LONGUE POINTE PLANT. CANADIAN CAR & FOUNDRY CO., LIMITED

6708



6 108

1



68

Progress photo. taken August 27, 1912
Canadian Steel Foundries Plant, Tongue Pointe

Interior view in Foundry Building, showing charging platform.



69

Progress photo. taken August 27, 1912
Canadian Steel Foundries Plant, Longue Pointe

Interior view in Foundry Building, looking across center aisle
from charging platform, showing two of the drying ovens.



65

Progress photo. taken August 27, 1912
Canadian Steel Foundries Plant, Longue Pointe

Interior view of Pattern Shop.



610
1

Progress photo. taken August 27, 1912
Canadian Steel Foundries Plant, Longue Pointe

View inside machine shop, at Noon hour, showing a portion of the interior.



#10
7/4/12

#10

634

Progress photo. taken July 4 1912
Canadian Steel Foundries Plant Longue Pointe
showing condition of sewer line



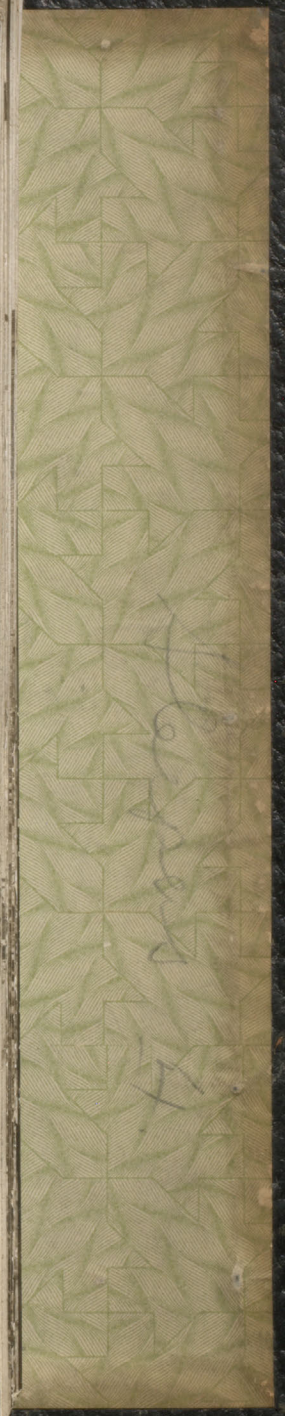
6 10
1
#8.

64
Progress photo. taken July 4 1912
Canadian Steel Foundries Plant Longue Pointe

showing condition of sewer line.



#7
1/4) 12



64

#7.

Progress photo. taken July 4 1912
Canadian Steel Foundries Plant Longue Pointe
showing condition of sewer line.



67

#6.

Progress photo. taken July 4 1912
Canadian Steel Foundries Plant Longue Pointe
showing condition of sewer line



#5.

67

Progress photo. taken July 4 1912
Canadian Steel Foundries Plant Longue Pointe

showing condition of sewer line.



#4
7/4/12

67

#4.

Progress photo. taken July 4 1912
Canadian Steel Foundries Plant Longue Pointe
showing condition of sewer line



64

#3.

Progress photo. taken July 4 1912
Canadian Steel Foundries Plant Longue Pointe

showing condition of ^{sewer}~~water~~ line.



#2
7/12/12

64

#2.

Progress photo. taken July 4 1912
Canadian Steel Foundries Plant Longue Pointe

showing condition of sewer line



7/4/12



64

#1.

Progress photo. taken July 4 1912
Canadian Steel Foundries Plant Longue Pointe

showing condition of sewer line



63

June
Progress photo. taken ~~July~~ 13, 1912
Canadian Steel Foundries Plant, Longue Pointe

Interior view in Power House



62

June
Progress photo. taken ~~July~~ 13, 1912
Canadian Steel Foundries Plant, Longue Pointe

Interior view in Power House



66

Progress photo, taken June 13, 1912
Canadian Steel Foundries Plant, Longue Pointe

View of two Babcock & Wilcox boilers installed and in operation
in Power House



60

Progress photo. taken June 13 1912
Canadian Steel Foundries Plant Longue Pointe

Exterior view of Pattern Shop



59

Progress photo. taken June 13, 1912
Canadian Steel Foundries' plant, Longue Pointe.
Showing Main building, from roof of office building.



58

Progress photo. taken June 13, 1912
Canadian Steel Foundries' plant, Longue Pointe

Showing portion of sand storage building, North end of Main
building, etc.



57

Progress photo. taken June 13, 1912
Canadian Steel Foundries plant, Longue Pointe

Exterior view of office building.



56

Progress photo. taken June 13 1912
Canadian Steel Foundries' plant, Longue Pointe

Exterior view of Pattern Storage Building.



#55

Progress photo. taken June 13, 1912
Canadian Steel Foundries Plant, Longue Pointe

Exterior view of Power House



#54

Progress photo. taken June 13, 1912
Canadian Steel Foundries' plant, Longue Pointe

Exterior view of Machine Shop.



Feb. 26/12

53

Progress photo taken Feb. 26, 1912
Canadian Steel Foundries Plant, Longue Pointe

showing condition of work on Office Building.



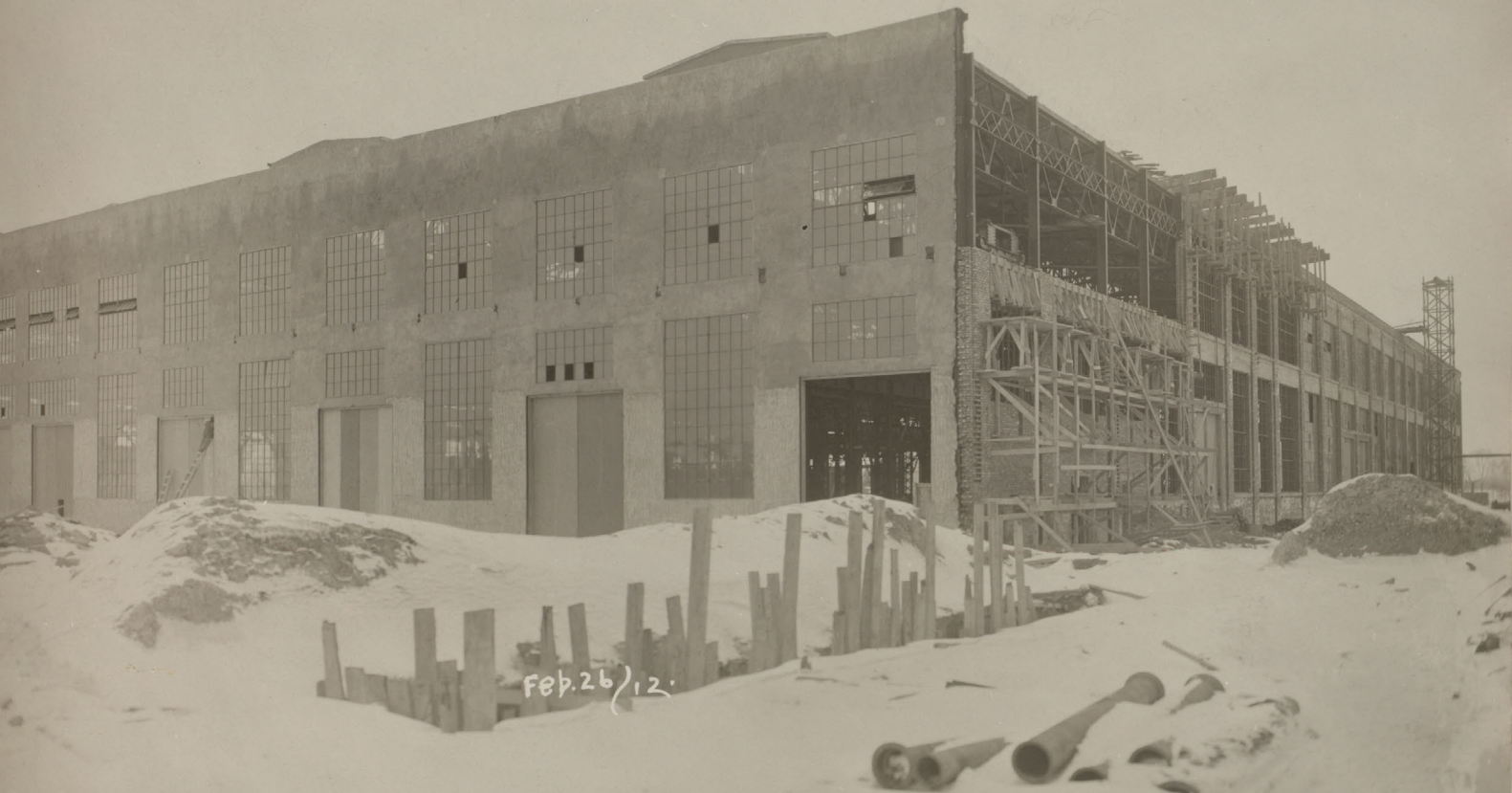
Feb. 26 / 12

52

Progress photo. taken Feby. 25, 1912

Canadian Steel Foundries Plant Longue Pointe

showing corner of Pattern Storage building, condition of
work on Power House, and small brick Transformer House (just
beyond and almost beneath water tank).



Feb. 26 / 12.



#51

Progress photo. taken Feby. 26, 1912
Canadian Steel Foundries Plant Longue Pointe

showing condition of Main Building, looking towards North
West corner.



Feb. 26 / 12



50

Progress photo. taken Feby. 26, 1912
Canadian Steel Foundries Plant, Longue Pointe

showing brickwork in progress on Machine Shop.



FEB. 12 / 12



49

Progress photo. taken Feby. 12, 1912
Canadian Steel Foundries Plant, Longue Pointe

Showing progress on Office Building. Behind the office building can be seen the Pattern Shop with window sash in place and roof laid. Installation of piping has been progressing all over the plant.



Feb. 12 / 12

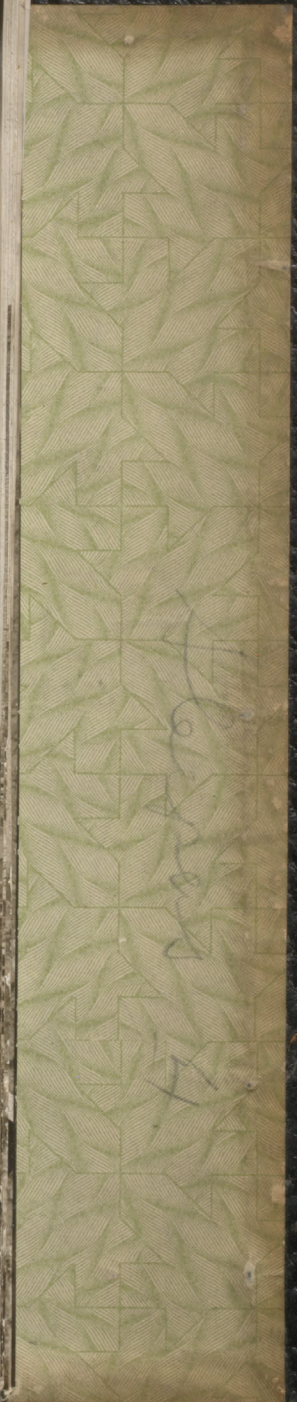
78

Progress photo. taken Feby. 12, 1912
Canadian Steel Foundries Plant, Longue Pointe

Showing brickwork in progress on Store House. Behind the Store House is the Chimney Stack and Power House, while behind can be seen a corner of the Pattern Storage Building.



Jan. 29 / 12



47

Progress photo. taken Jany. 29 1912
Canadian Steel Foundries Plant, Longue Pointe

View inside Main Shop, looking West from South East corner.
In the foreground can be seen the forms in place for one of the
furnaces.



JAN 29

46
Progress photo. Taken Jany. 29, 1912
Canadian Steel Foundries Plant, Longue Pointe

East corner. View inside main Shop, looking North from South

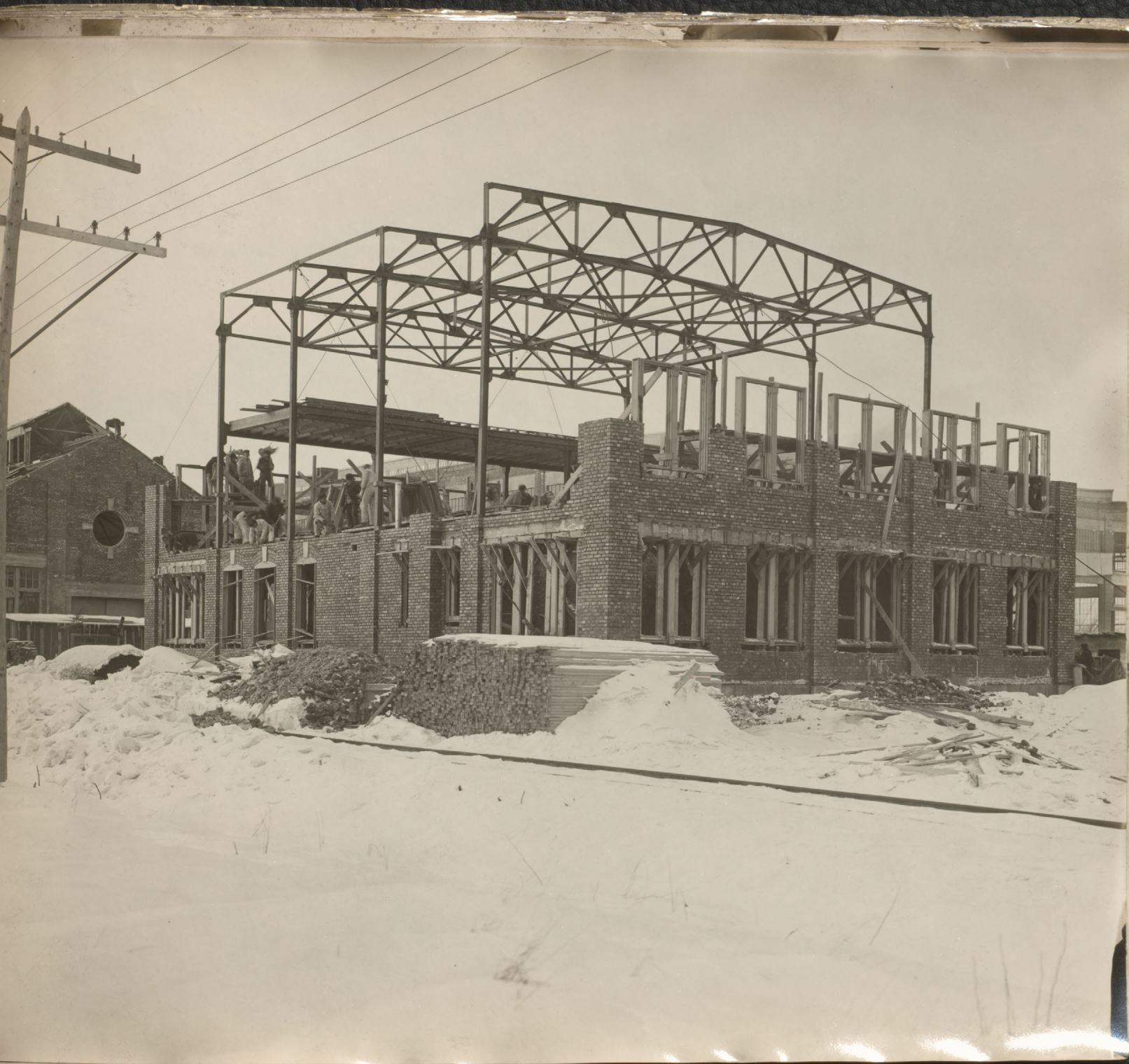


JAN. 29 / 12

45

Progress photo. taken Jany. 29, 1912
Canadian Steel Foundries' Plant, Longue Pointe

View inside Main Shop, looking South from North West Corner



44
Progress photo. taken January 22, 1912
Canadian Steel Foundries' Plant, Longue Pointe.

Showing condition of work on office building.

e Pointe.



JAN. 22 / 12



MSO
1
43
Progress photo. taken January 22, 1912
Canadian Steel Foundries Plant, Longue Pointe

showing condition of work on Pattern Shop

Pointe



JAN 22/12

COKE



42

MSO
1

Progress photo. taken January 22, 1912
Canadian Steel Foundries Plant, Longue Pointe

Showing condition of work on Power House.

inte



JAN. 22 / 12

41

MSO
1

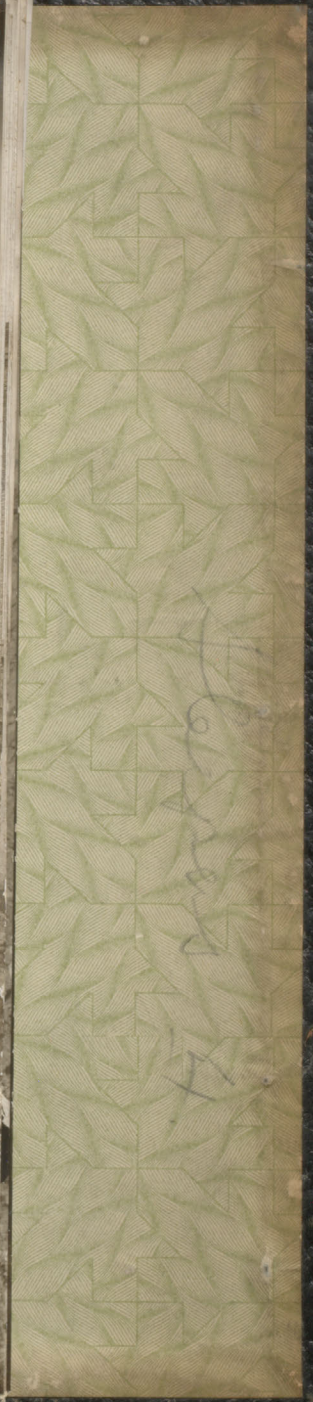
Progress photo. taken January 22, 1912
Canadian Steel Foundries Plant, Tongue Pointe

showing condition of work on Machine Shop

Pointe



Dec. 27 / 11



MSG

1

70.40

Progress photo. taken Dec. 27, 1911

Canadian Steel Foundries Plant, Longue Pointe

Showing condition of work on Power House, etc.

le Pointe

c.



Dec 27 /

00

No 39

Progress photo. taken Dec. 27, 1911
Canadian Steel Foundries' Plant, Longue Pointe

Showing condition of work on Pattern Shop and Office Building.

gue Point

e Bui



Dec. 27 / 11



No. 38

Progress photo. taken Dec. 27, 1911
Canadian Steel Foundries Plant, Longue Pointe

Showing condition of work on Sand Storage Building



Dec. 27
11



No. 38

Progress photo. taken Dec. 27, 1911
Canadian Steel Foundries Plant, Longue Pointe

Showing condition of work on Sand Storage Building

No. 37

Progress photo. taken Dec. 27, 1911
Canadian Steel Foundries' Plant, Longue Pointe

Showing steelwork being unloaded from cars on site of
Machine Shop.



Dec. 18 / 11



No. 36

Progress photo. taken Dec. 18, 1911
Canadian Steel Foundries Plant, Longue Pointe

Showing condition of work on Power House



Dec. 18 / 11



35

Progress photo. taken Dec. 18, 1911
Canadian Steel Foundries Plant, Longue Pointe

Showing condition of work on Pattern Storage Building,
Pattern Shop and Office Building.



Dec. 11 / 11

#34

Progress photo. taken Dec. 11, 1911
Canadian Steel Foundries Plant, Longue Pointe

Showing brickwork progressing on Pattern Shop, etc.



Dec. 11 / 11

MSO

33

Progress photo. taken Dec. 11, 1911
Canadian Steel Foundries Plant, Longue Pointe

showing condition of work on Power House.



DEC. 4, 11



MS

#32

Progress photo. taken Dec. 4, 1911
Canadian Steel Foundries Plant, Longue Point.

Showing condition of work on steelwork of Power House; chimney
stack erected, etc.

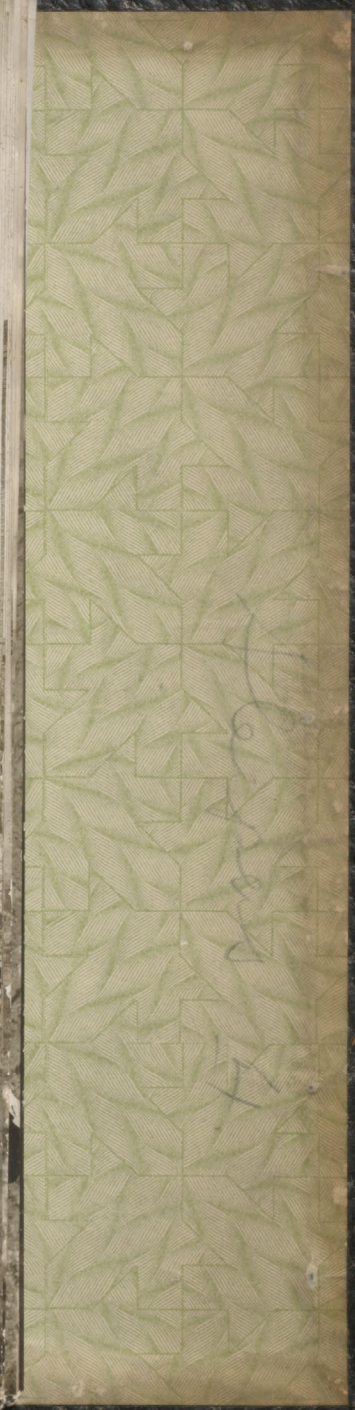


#31

Progress photo. taken Dec. 4, 1911
Canadian Steel Foundries plant, Longue Pointe

showing condition of work on Pattern Shop. South of Pattern
Shop can be seen the steelwork of office building partly erected.

tern
prech



#30

Progress photo. taken Dec. 4, 1911
Canadian Steel Foundries Plant, Longue Pointe

showing condition of work on Pattern Storage Building.



Nov. 27/11.

289

Progress photo. taken Nov. 27, 1911
Canadian Steel Foundries plant, Longue Pointe

Showing condition of work on Power House, Longue Pointe.

Point



Nov. 27/11



28

Progress photo. taken Nov. 27, 1911
Canadian Steel Foundries plant, Longue Pointe.

Showing condition of work on office building, etc.



Nov. 27/11.

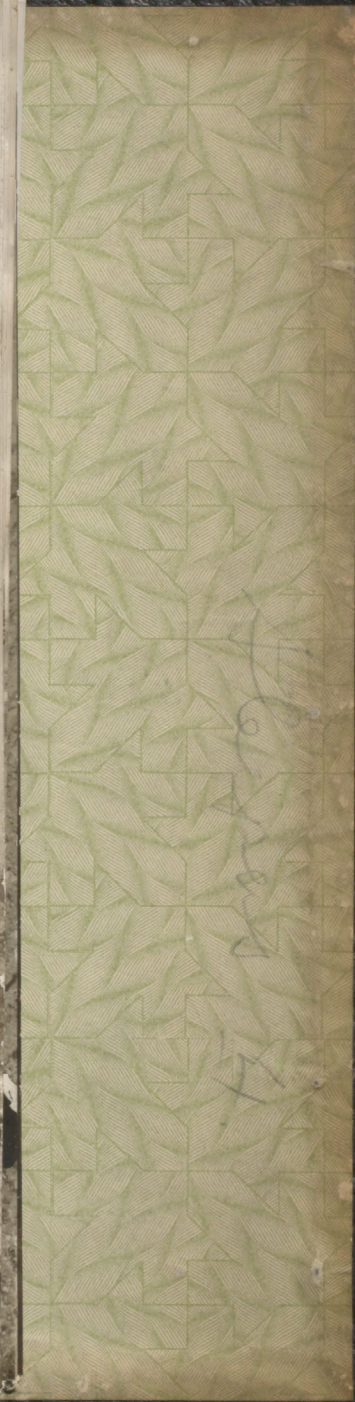
#29

Progress photo. taken Nov. 27, 1911
Canadian Steel Foundries' plant, Longue Pointe

Showing progress of work on Pattern Shop.



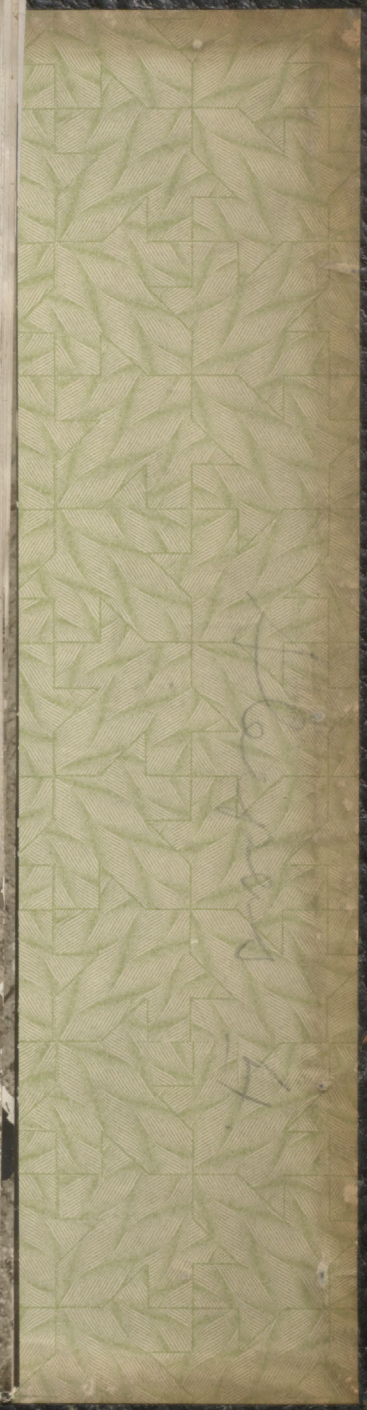
Nov. 20/11.



#26

progress photo. taken Nov. 20, 1911
Canadian Steel Foundries Plant, Longue Pointe

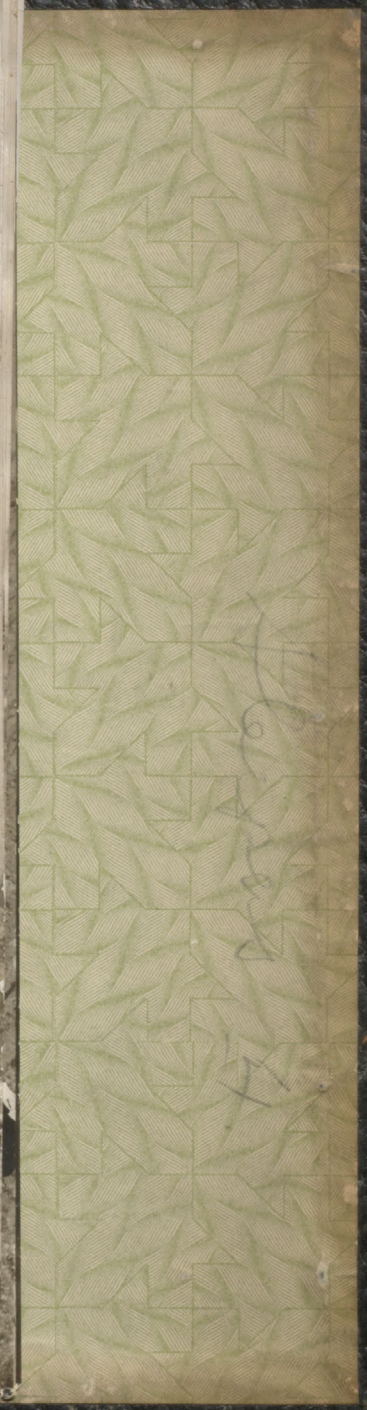
showing condition of work on South and West sides of
main Building; steel water tank roofed over, etc.



28

Progress photo. taken Nov. 20, 1911
Canadian Steel Foundries Plant, Longue Pointe

showing erection of steel work commenced on Pattern Shop;
brickwork on Pattern Storage Shop about half completed, etc.



MS
Progress photo, taken Nov. 20, 1911
Canadian Steel Foundries Plant, Longue Pointe

#24

showing commencement of erection of steel work on
Power House; progress on chimney stack and Store House. North
of Store House and not shown on photo. the foundations for
machine shop are in the ground and forms are being removed.



Nov. 13/11.



23

Progress photo. taken Nov. 13, 1911

showing plant as seen from Notre Dame St. In the foreground is shown condition of work at this end of pipe line. The steelwork on office building cannot be seen as this was blown down during the gale on Sunday night.

In the
line.
as blue



Nov. 13/11.

MS

22

Progress photo. taken Nov. 13, 1911

showing North end of Main Building, and, to the
left, concrete piers partly completed for sand storage.



Nov. 13/11.

21

Progress photo. taken Nov. 13, 1911

showing progress made on Store House, chimney stack, steel water tank, pattern storage building. North of Store House, not shown on photo., the foundations are partly completed for Machine Shop, while South of Pattern Storage building the erection of steel has been commenced on Pattern Shop.



Nov. 6/11.

stach
re
fur

MS

20

Progress photo. taken Nov. 6, 1911
Canadian Steel Foundries' Plant, Longue Pointe.

showing, in foreground, forms in place for foundations
of Pattern Shop, while beyond can be seen the West side of
Main Building, condition of work on Pattern Storage Building,
and steel water tank.



Nov. 4/11.

MS
#19
Progress photo. taken Nov. 6, 1911
Canadian Steel Foundries Plant, Longue Pointe.

~~showing, in foreground, forms in place for foundations of
Pattern Shop, while beyond can be seen the West Wall of main
shop, conditi~~

showing condition of work on Power House, chimney stack,
etc.



Nov. 1/11

#18

Progress photo. taken Nov. 1, 1911
Canadian Steel Foundries plant, Longue Pointe.

showing (to the left) condition of work on office building,
and (to the right) South and West sides of Main Building.



Nov. 1/11.



MS

17

Progress photo. taken Nov. 1, 1911
Canadian Steel Foundries Plant, Longue Pointe.

showing condition of work on water tank, North and **West** sides
of Main Building, and (to the right) Pattern Storage Building. In
the foreground can be seen the foundations for Power House.



Nov. 1/11.

East side
Building
use.



MS

Progress photo. taken Nov. 1 1911
Canadian Steel Foundries Plant, Longue Pointe.

16

showing, in foreground, foundations for Power House in place
with forms partly removed; chimney stack partly erected, and (behind
stack) condition of work on Store House.



Oct. 23/11.



MS

Canadian Steel Foundries Plant, Longue Pointe.

#15

Progress photo. showing, in foreground, foundations for office building, and in background, South and West sides of Main Building, and condition of work on Pattern Storage Building.



Oct 23/11.



MS

#14

Progress photo. taken Oct. 23, 1911, looking at North
West corner of main Building.



Oct. 23/11.



13

Canadian Steel Foundries Plant, Longue Pointe.

Progress photo. taken Oct. 23, 1911, showing erection of water tank commenced, excavation for power house in progress and some of the forms in place, and Pattern Storage Building in the background.



#12

Progress photo. taken Oct. 16 1911

Shows North and Western sides of Main Building. In the foreground is some of the material for Water Tank, and photograph also shows the new railway siding running into building.



Progress photos. taken Oct. 16 1911

Top picture, taken looking North, shows progress on Oil Storage Building. The foundations of Storage House cannot be distinguished but are completed and forms have been removed.

Lower picture shows progress made in excavating for Power House, and also condition of work on Pattern Storage Building.

#11

MS



#10

Progress photo. taken Oct. 16

Shows a general view of plant from the South. In the foreground, at the left, are seen the foundations for office building, from which the forms are just being removed. Further back is the Pattern Storage Building, while to the right is seen the Main Building.



9.

Progress photo. taken Oct. 9, 1911, showing condition of Main Building, Canadian Steel Foundries plant, Longue Pointe.



Nov. 9/11.

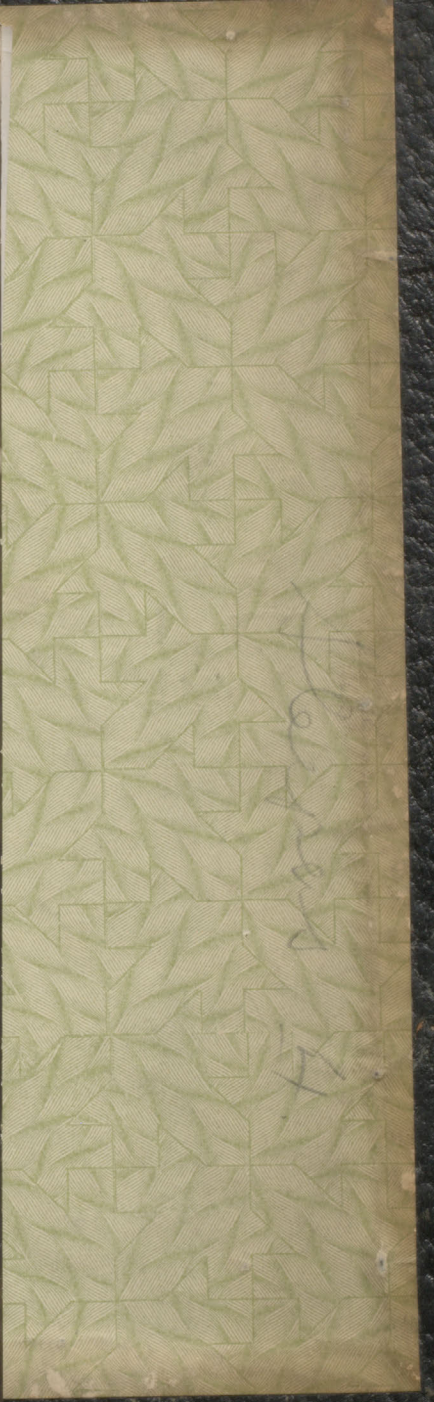


No. 8.

Progress photo. taken Noon Oct. 9 1911 looking South from site of Water Tank. To the right can be seen the progress made on Pattern Storage Building, while further beyond can be seen the forms in place for foundation of office building and partly filled with concrete.



Oct. 1/11



102
7

Progress photo. taken Oct. 9, 1911, looking North from site of Water Tank. To the left, in the foreground, can be seen the commencement of excavation for foundation of Power House. Further back, behind the machine covered with tarpaulins, can be seen the forms for foundation of Storehouse, the forms being filled with concrete. To the right the brickwork of Oil Storage Building can be seen rising some distance above the ground.



Longue Pointe. In the top picture, a
workmen removing the forms from the completed foundation for
oil storage house while at the left are seen the forms in place
for foundation of storehouse. The lower picture shows
foundation for pattern storage building partly completed, the
forms being removed from two sides while the workmen are throwing
concrete into the forms on the other two sides.



Oct. 2/11.

Progress photo. taken Oct. 2, 1911, looking towards South East
corner of Main Building, showing progress made on South and East sides

#3



Oct. 2/11



Progress photo. taken Oct. 2 1911 showing North West corner of
Main Building of Canadian Steel Fdry's. plant, Longue Pointe. In the
foreground, a little to the right, can be seen the four completed
foundation piers for water tank.

+



第3-9/26/11



第4-9/24/11



Progress Photo. taken Sept. 26, 1911

Showing Progress made to date on Stack foundation,
Tank, Storehouse, Oil House.

3
#



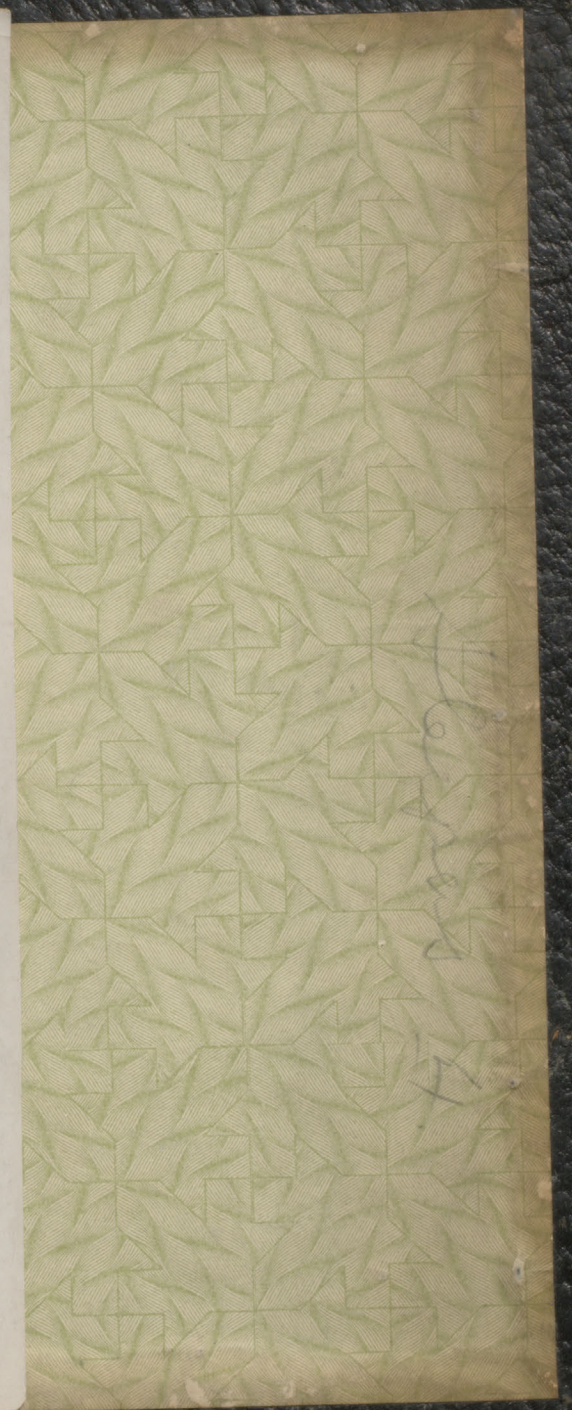
#1-128-11

#2-926-11

Storage building.

22
*

PHOTOGRAPH BY J. H. ...



View showing progress made on Main building
Canadian Steel Foundries' plant at Longue Pointe
Photographed Sept. 18, 1911 (Noon)

#1



