





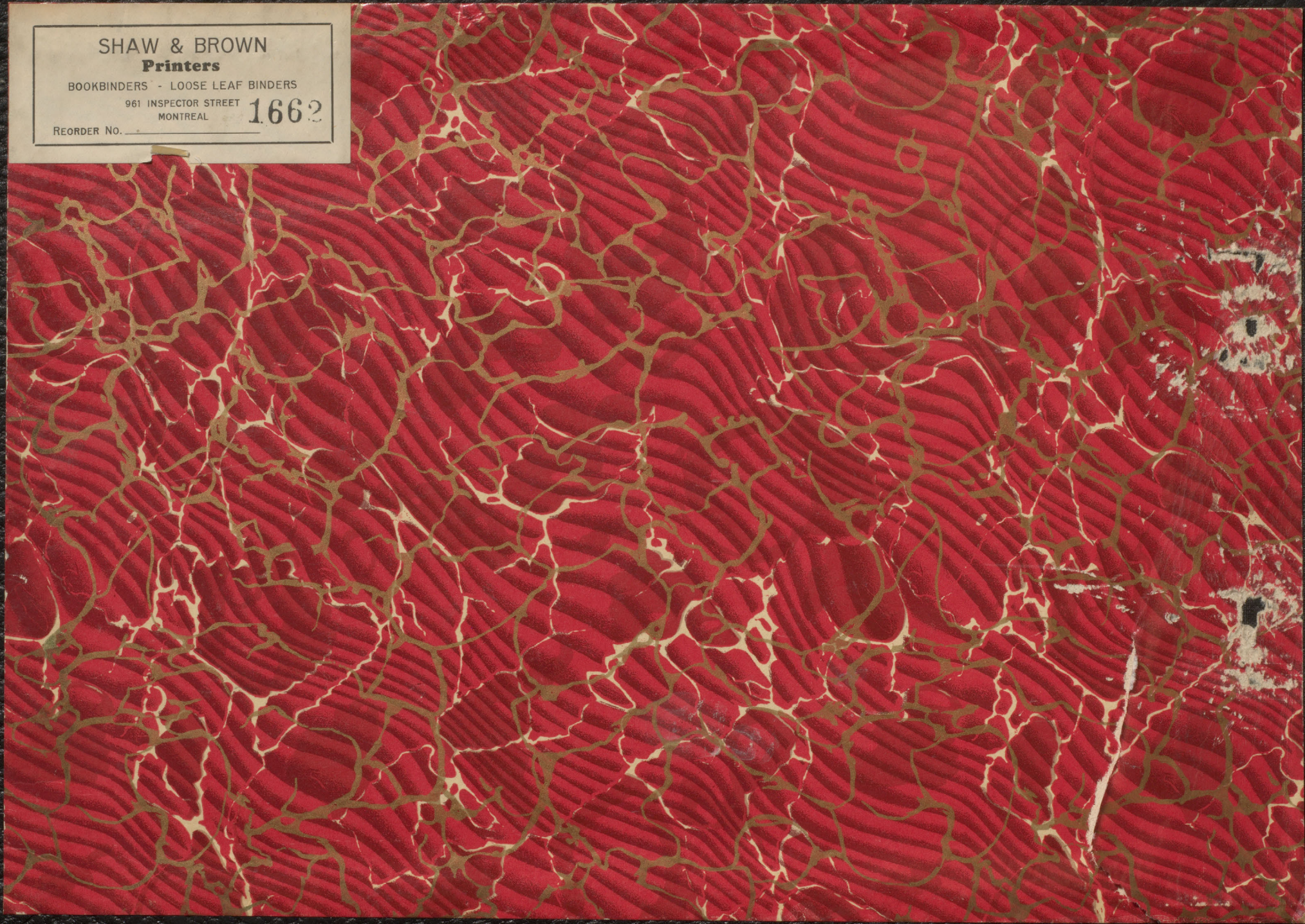
SHAW & BROWN  
**Printers**

BOOKBINDERS - LOOSE LEAF BINDERS

961 INSPECTOR STREET  
MONTREAL

**1662**

REORDER No. \_\_\_\_\_







SOLID MANGANESE-STEEL SPECIAL TRACK LAYOUT  
King, Queen, Roncesvalles and Lake Shore Road  
TORONTO  
Manufactured by  
CANADIAN STEEL FOUNDRIES, LIMITED  
MONTREAL  
1923



SHAW & BROWN

**Printers**

BOOKBINDERS - LOOSE LEAF BINDERS

961 INSPECTOR STREET  
MONTREAL

1662

REORDER No. \_\_\_\_\_





36

**MONTREAL STEEL WORKS LIMITED**  
OFFICE COR. ST. PATRICK & ST. ETIENNE STS.



E.S. 19



SHAW & BROWN

**Printers**

BOOKBINDERS - LOOSE LEAF BINDERS

961 INSPECTOR STREET  
MONTREAL

**1662**

REORDER No. \_\_\_\_\_



CSF-19

Cast steel truck columns







SHAW & BROWN  
Printers

BOOKBINDERS - LOOSE LEAF BINDERS

961 INSPECTOR STREET  
MONTREAL

1662

REORDER No. \_\_\_\_\_



CSF-27

Intersection of St. James Street & Atwater  
Ave.



29



65E 29





SHAW & BROWN

Printers

BOOKBINDERS - LOOSE LEAF BINDERS

961 INSPECTOR STREET  
MONTREAL

1662

REORDER No. \_\_\_\_\_



CSF-29

Intersection of Sherbrooke St. & Sargent Ave.  
Winnipeg Electric Ry.





6561





SHAW & BROWN  
**Printers**

BOOKBINDERS - LOOSE LEAF BINDERS

961 INSPECTOR STREET  
MONTREAL

1662

REORDER No. \_\_\_\_\_



CSF-1

Intersection for Winnipeg treet Ry.







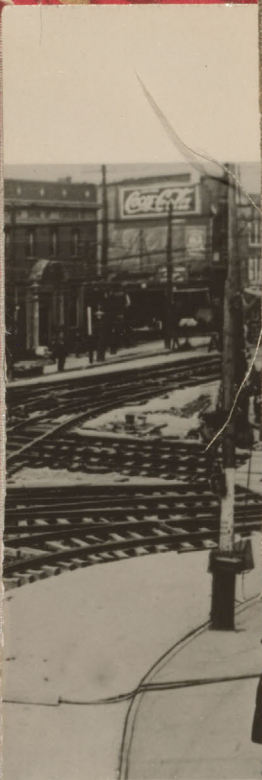
SHAW & BROWN  
Printers

BOOKBINDERS - LOOSE LEAF BINDERS

961 INSPECTOR STREET  
MONTREAL

1662

REORDER No. \_\_\_\_\_

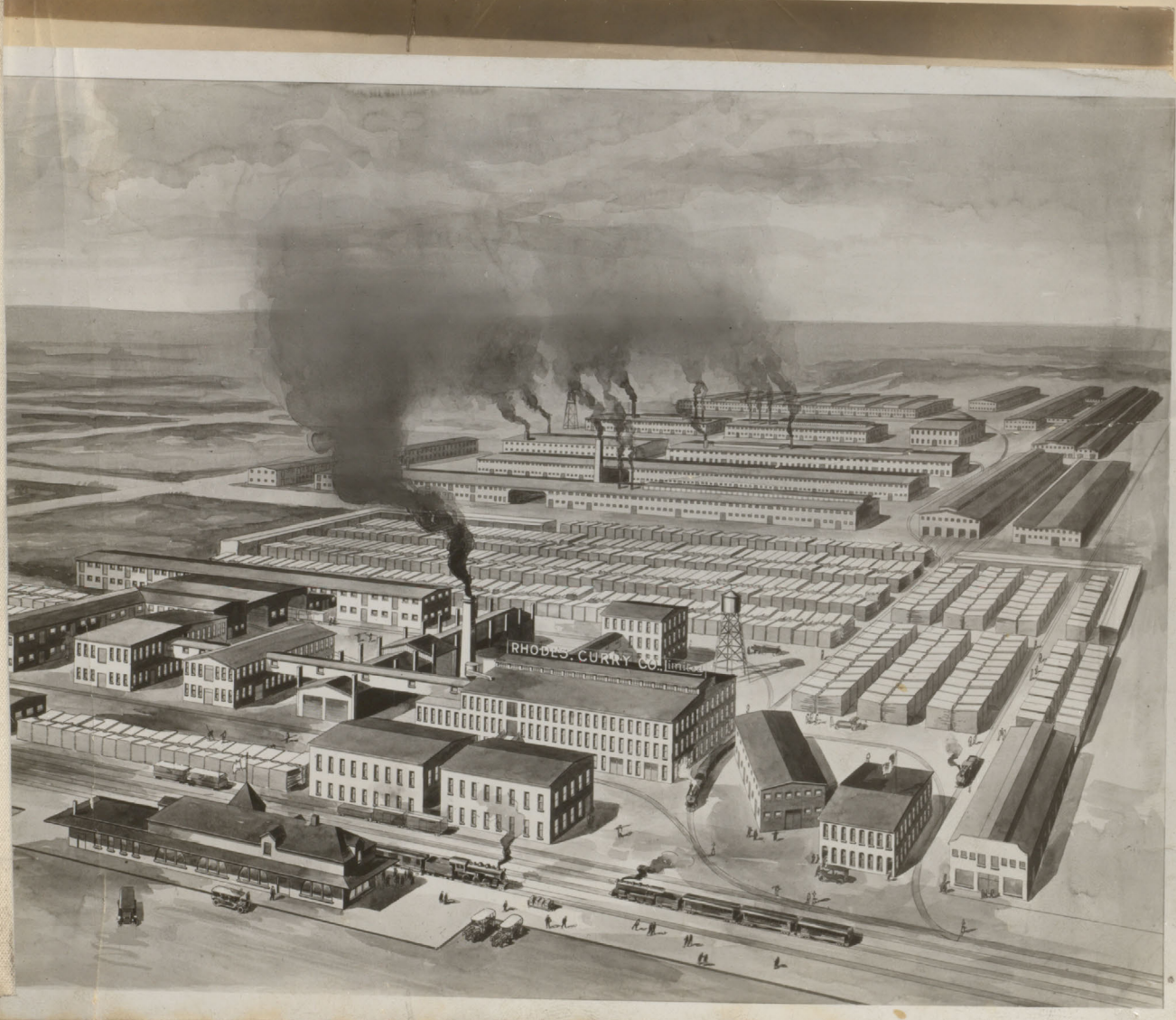


CSF-1

CSF-2

Intersection for Winnipeg Street Ry.  
showing manganese steel center







SHAW & BROWN  
Printers

BOOKBINDERS - LOOSE LEAF BINDERS

961 INSPECTOR STREET  
MONTREAL

1662

REORDER No. \_\_\_\_\_



*Amherst Plant*

*R. Woodes Curry*

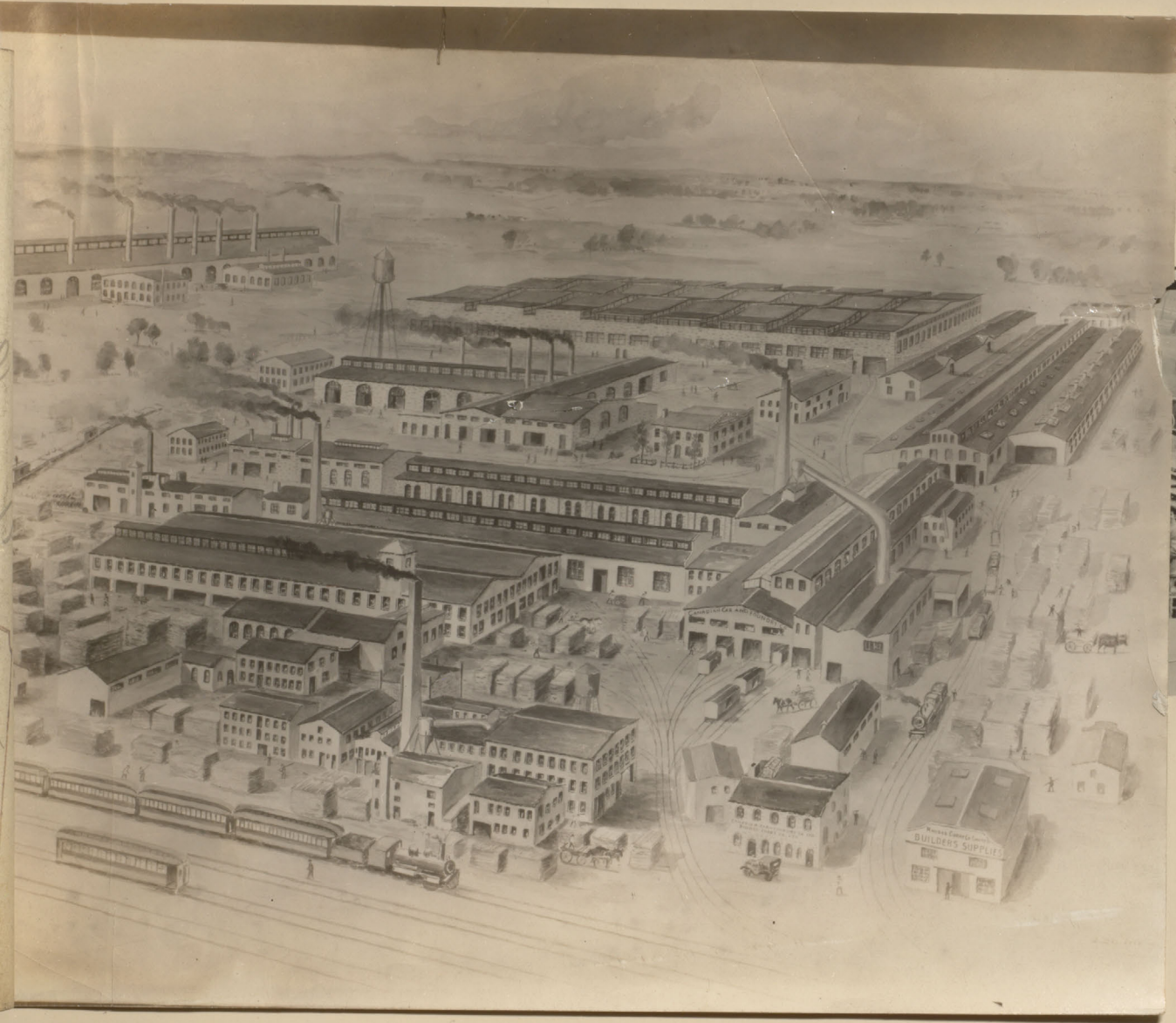
*Amherst*

*HC*

CSF-2

7898





NOVEMBER, 1925.





SHAW & BROWN  
Printers

BOOKBINDERS - LOOSE LEAF BINDERS  
961 INSPECTOR STREET  
MONTREAL

1662

REORDER No. \_\_\_\_\_



CSR-2



26

CSF 237A MONTREAL TRAMWAYS CO. PEEL, WINDSOR AND DORCHESTER STREETS INTERSECTION. NOVEMBER, 1925.

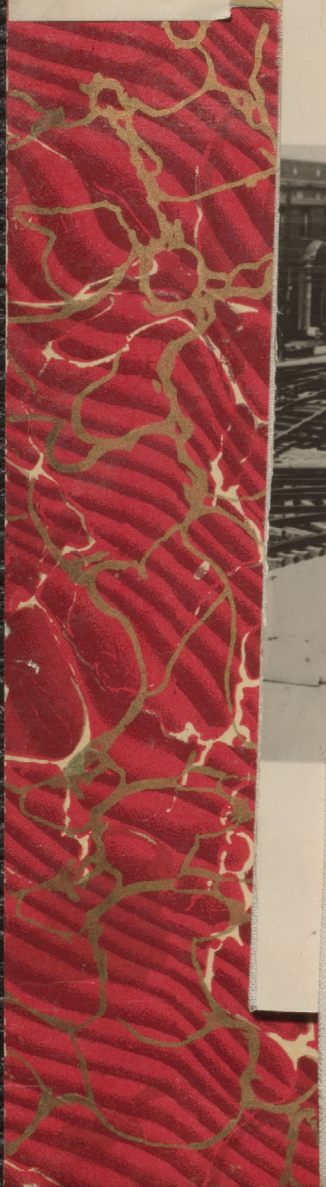




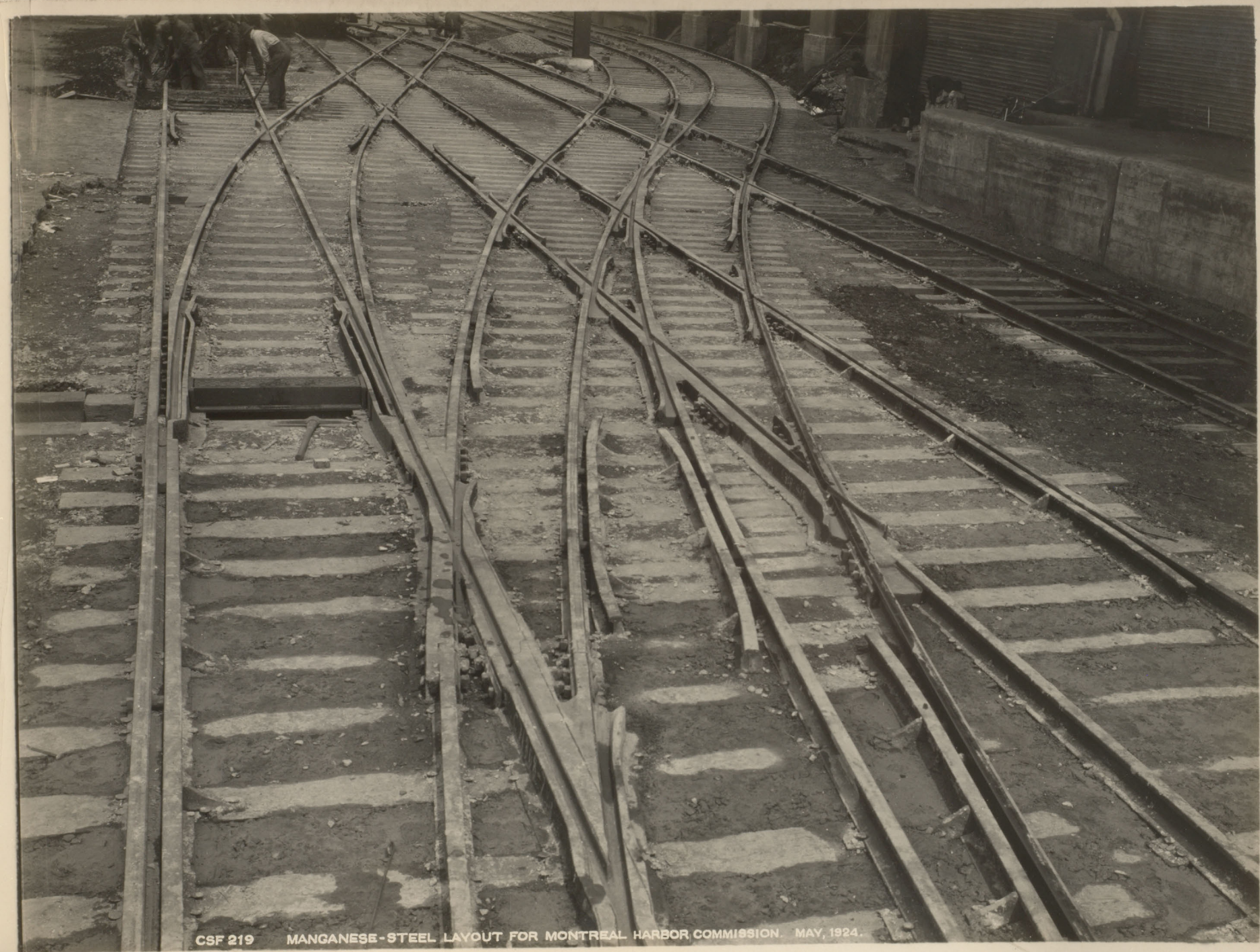
SHAW & BRO  
**Printers**

BOOKBINDERS - LOOSE LE  
961 INSPECTOR STRE  
MONTREAL

REORDER No. .







CSF 219 MANGANESE-STEEL LAYOUT FOR MONTREAL HARBOR COMMISSION. MAY, 1924.



SHAW

BOOKBINDERS  
961

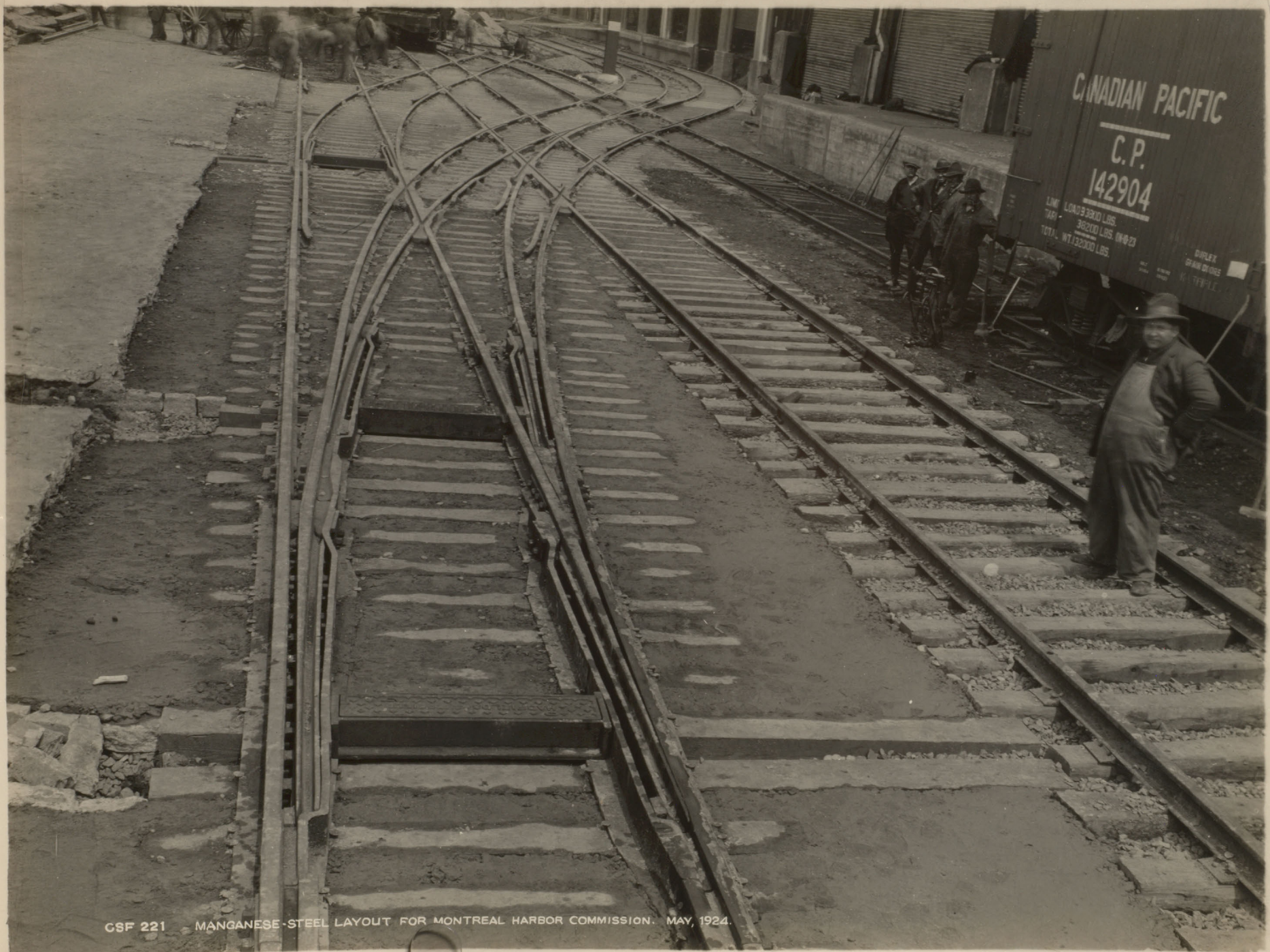
REORDER No. \_\_\_\_\_



CSF 220

MANGANESE-STEEL LAYOUT FOR MONTREAL HARBOR COMMISSION. MAY, 1924.





CSF 221 MANGANESE-STEEL LAYOUT FOR MONTREAL HARBOR COMMISSION. MAY, 1924.



SH

BOOKBIN

REORDER NO



CSF 222 MANGANESE-STEEL LAYOUT FOR MONTREAL HARBOR COMMISSION. MAY, 1924.





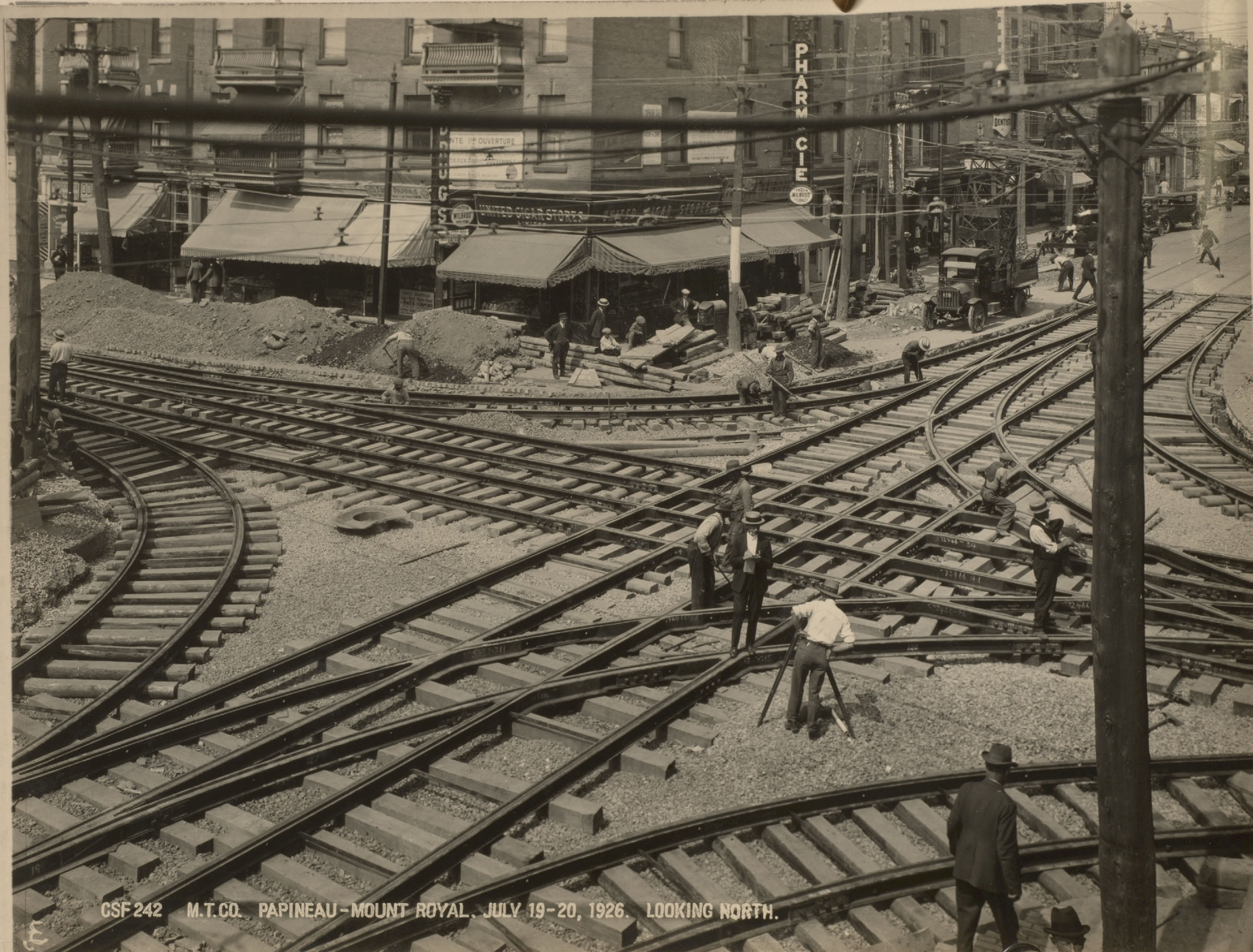
CSF 241 M.T.CO. PAPINEAU - MOUNT ROYAL JULY 19 - 20, 1926. LOOKING SOUTH



SH

BOOKB

REORDER N



CSF 242 M.T.CO. PAPINEAU-MOUNT ROYAL. JULY 19-20, 1926. LOOKING NORTH.





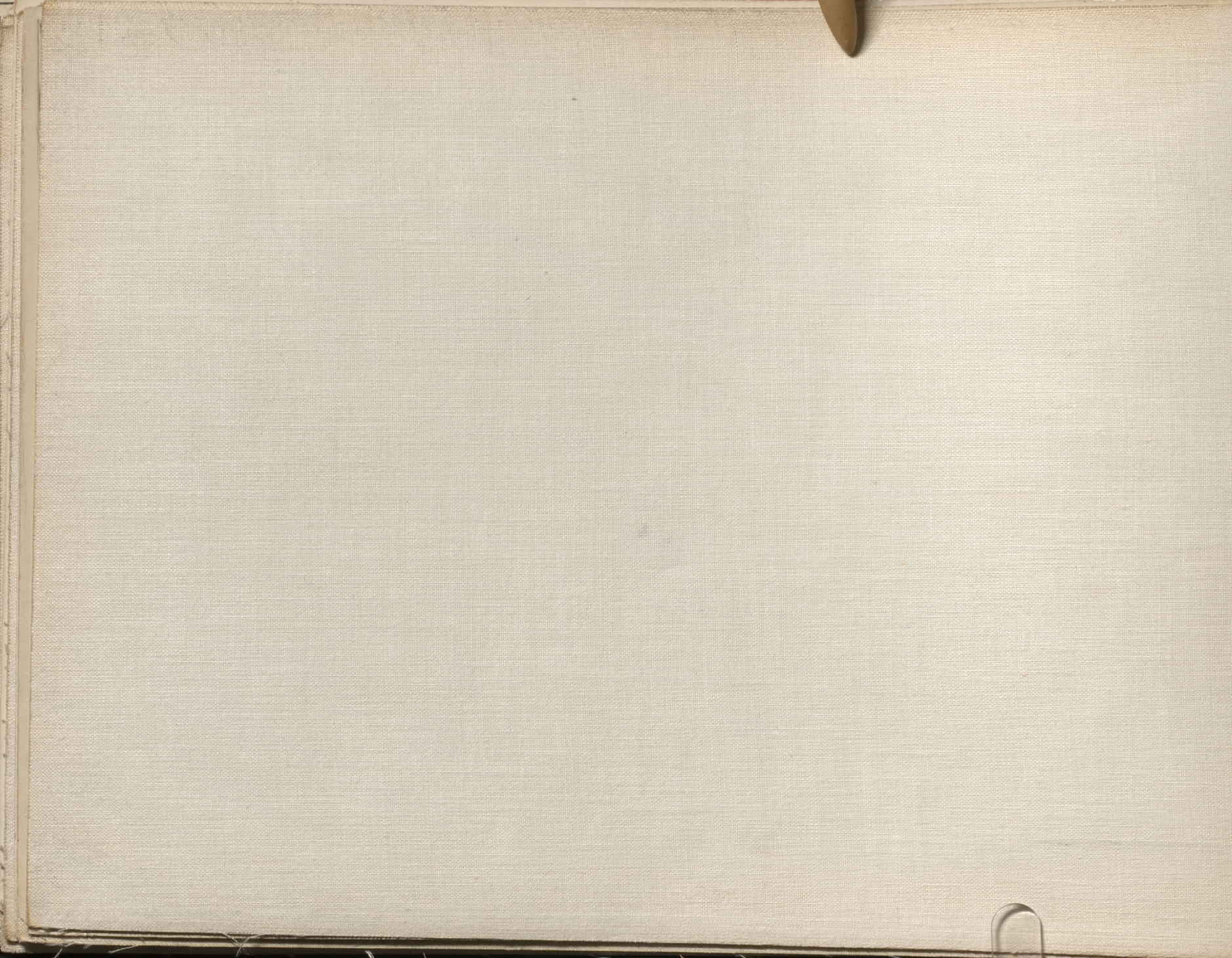
CSF 243 M.T.CO. PAPINEAU-MOUNT ROYAL. JULY 19-20, 1920. LOOKING NORTH AND EAST



S

BOOKBI

REORDER N







CSF 251

GRAND UNION, ONTARIO AND DELORIMIER, APRIL 1928. MONTREAL TRAMWAYS CO.



SHAW & BROWN

BOOK

REORDER



CSF 252

PT. ST. CHARLES WORKS. MARCH, 1928. GRAND UNION FOR ONTARIO - DELORIMIER. MONTREAL TRAMWAYS CO.





CSF 263 OCTOBER 1929. MONTREAL TRAMWAYS CO. COTE ST. PAUL CAR BARN.



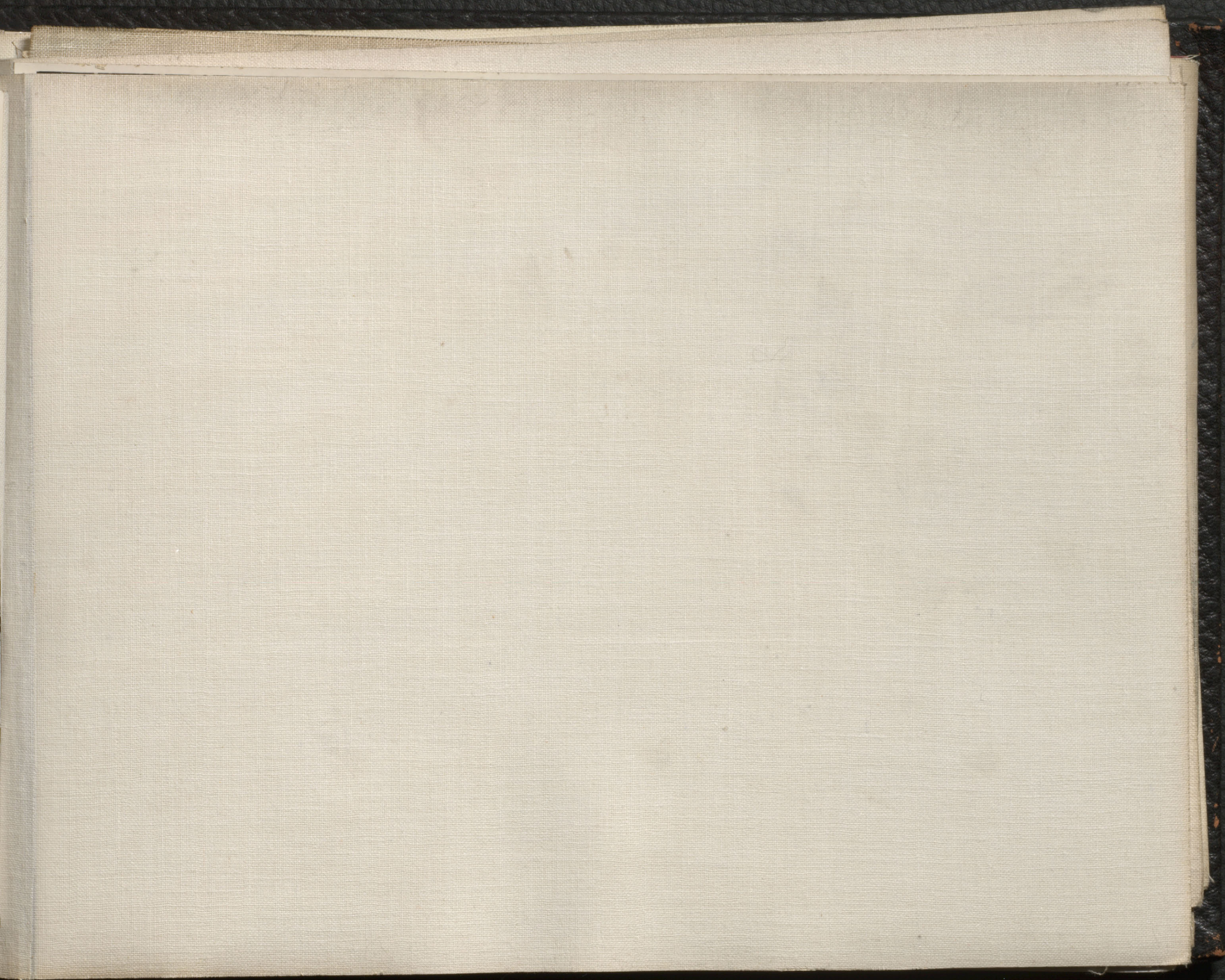
BOOK

REORDER



PHOTO BY DIVISION DELORMIER. MONTREAL TRAMWAYS CO.







BOO

REORDE



CSF 264 OCTOBER, 1929. MONTREAL TRAMWAYS CO. COTE ST. PAUL CAR BARN.





CSF 265 OCTOBER 1929. MONTREAL TRAMWAYS CO. COTE-ST. PAUL CAR BARN



BOC

REORD



CSP 266 OCTOBER 1929. MONTREAL TRAMWAYS CO. COTE ST. PAUL CAR BARN. SOUTH SIDE.





CSF 267 OCTOBER 1929 MONTREAL TRAMWAYS CO. COTE ST. PIERRE CAR BARN NORTH SIDE



BO

REOR



CSF 268 OCTOBER, 1929, MONTREAL TRAMWAYS CO. COTE ST. PAUL CAR BARN. NORTH SIDE.



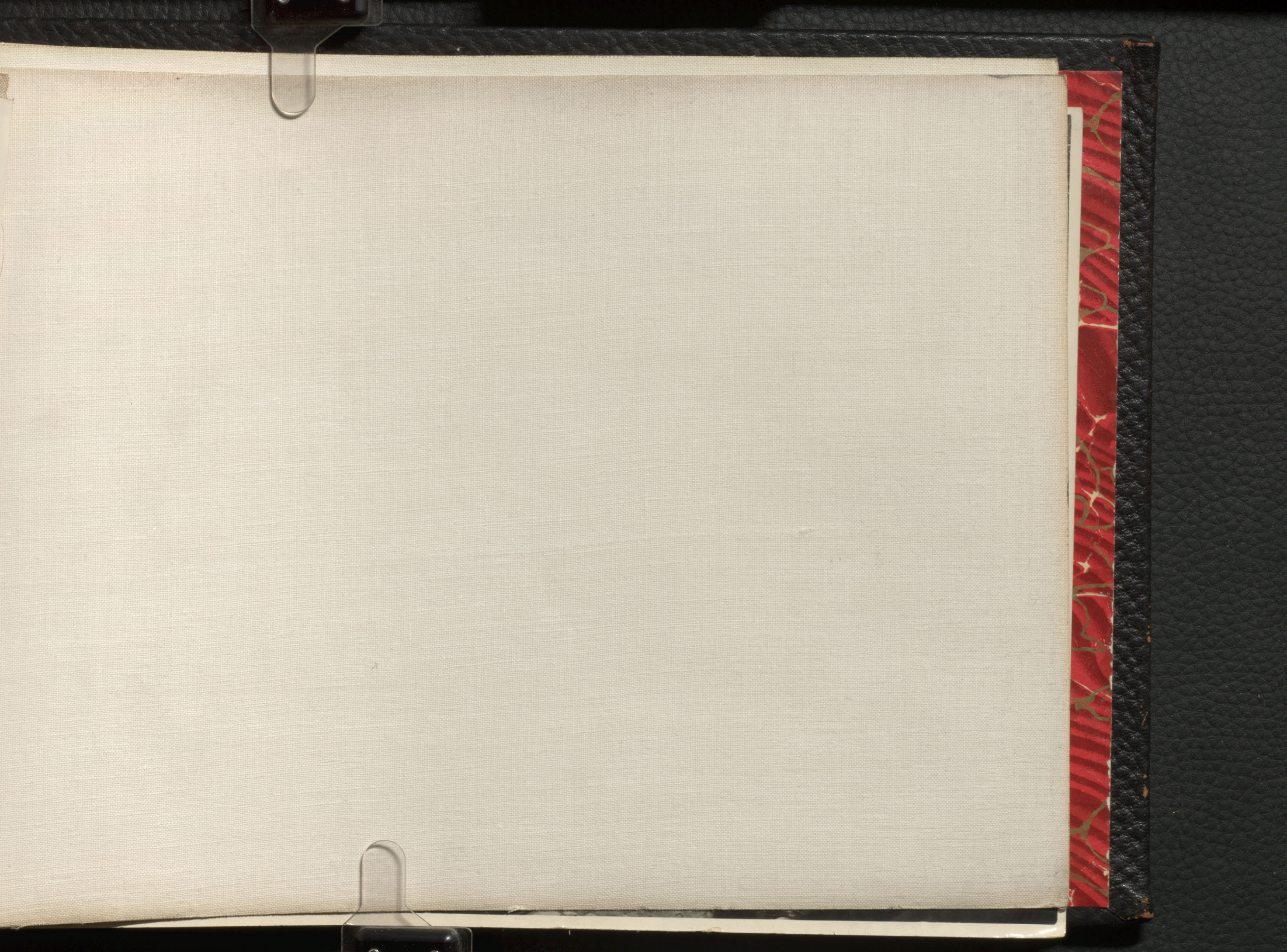


CSF 269 - OCTOBER, 1929. MONTREAL TRAMWAYS CO. COTE ST. PAUL CAR BARN, NORTH SIDE

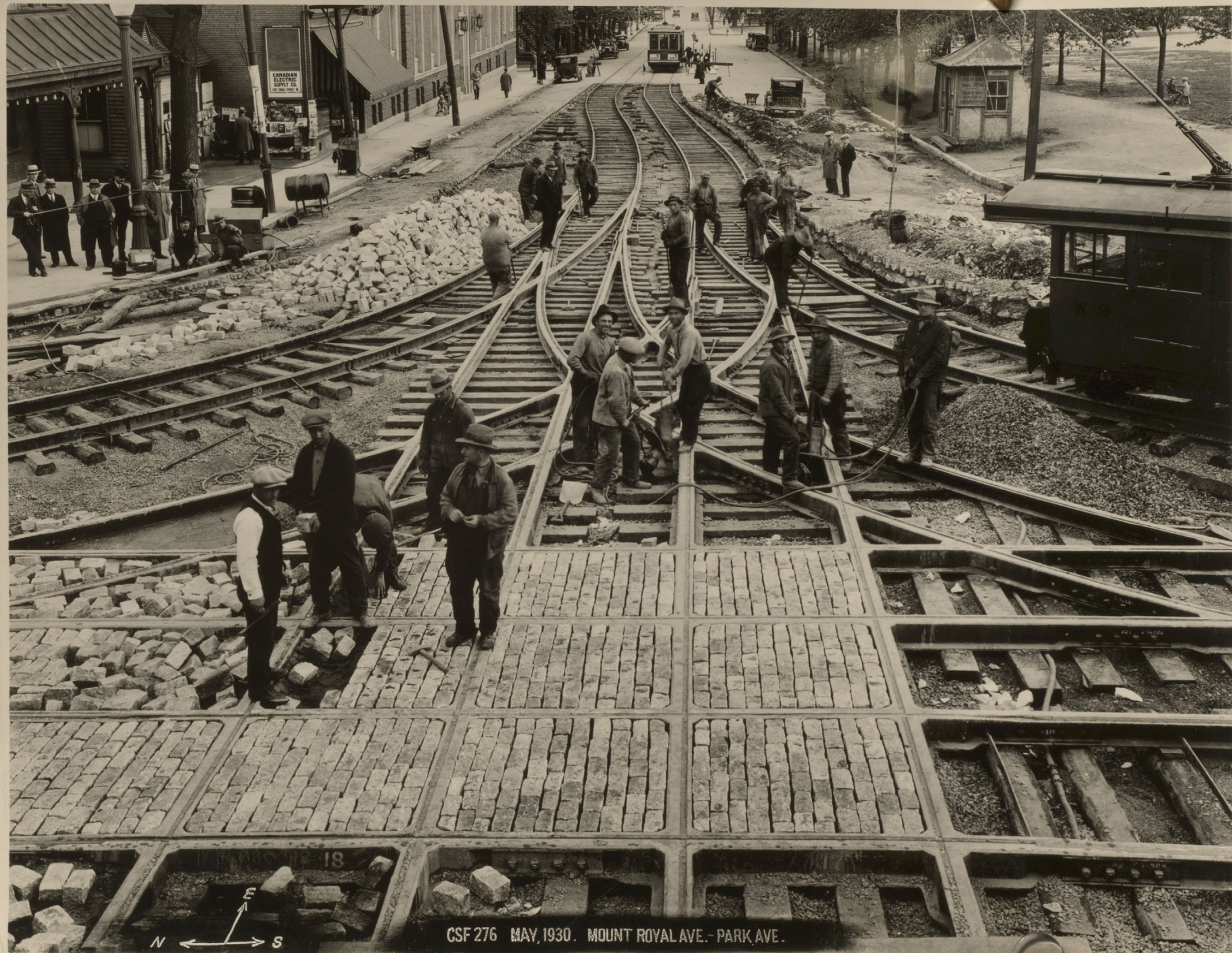












CANADIAN  
ELECTRIC  
SUPPLY CO.  
INC. TORONTO, ONT.



CSF 276 MAY, 1930. MOUNT ROYAL AVE. - PARK AVE.





Loop Track on Mountain Line. (Under construction)

CSF 277 MAY 1930. PARK AVE. - MOUNT ROYAL AVE.







CSF 310 AUGUST, 1935. ST. JAMES STREET - VICTORIA SQUARE. M.T.CO.





CSF 311 AUGUST, 1935. ST. JAMES STREET - VICTORIA SQUARE. M.T.CO.





CSF 312 SEPTEMBER, 1935. ST. JAMES - MCGILL STREETS. M. T. CO.





CSF 313 SEPTEMBER, 1935. ST. JAMES - MCGILL STREETS. M.T.CO.





