

CANADIAN CAR & FOUNDRY COMPANY  
LIMITED

MISCELLANEOUS

MONTREAL  
CANADA



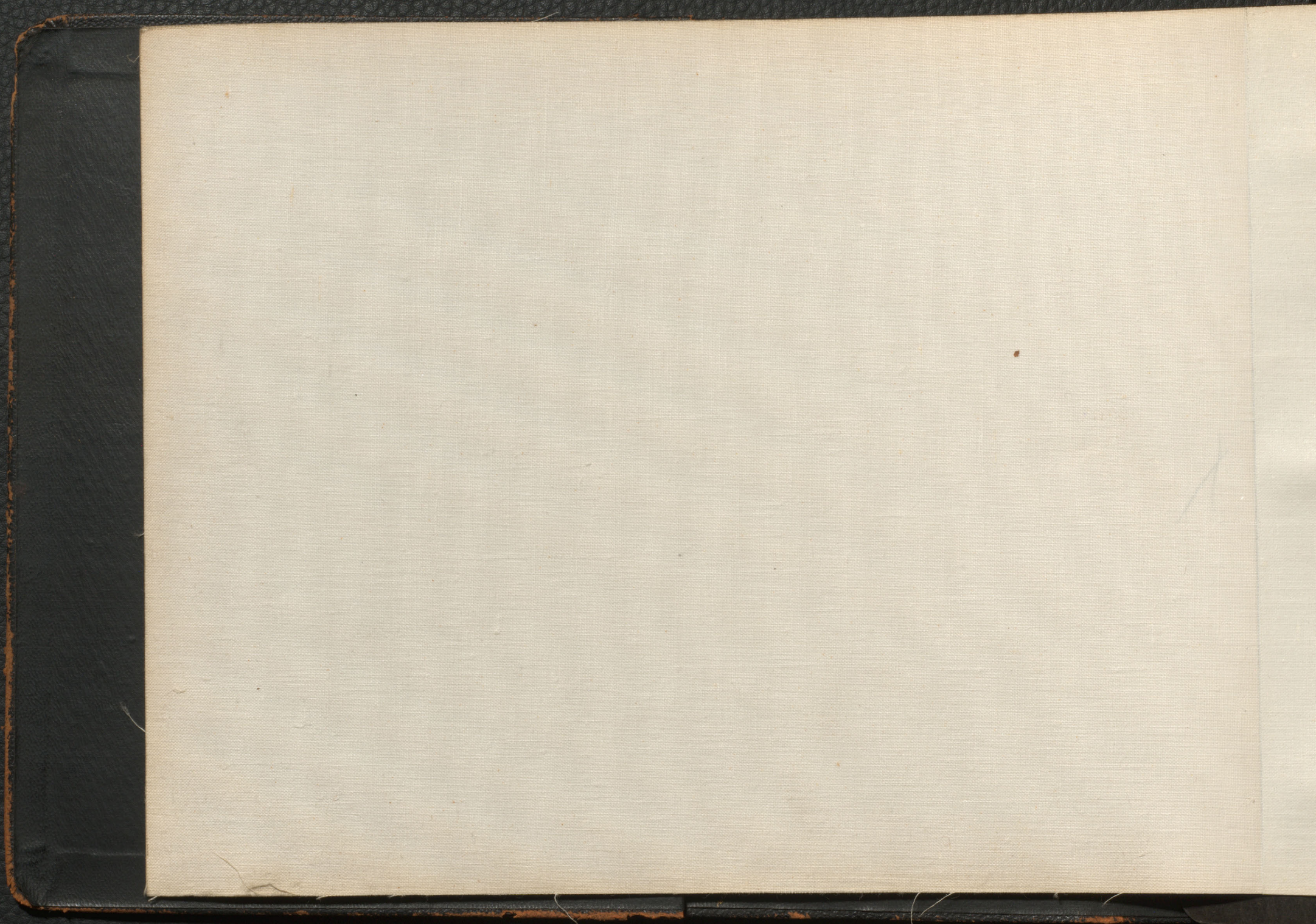






F.P-2 RIGHT-CAR SHOP. CENTER-SHIP PLANT. LEFT-WHEEL FOUNDRY. FORT WILLIAM PLANT









F.P.I. - FORT WILLIAM - OFFICE BUILDING





CANADIAN CAR & FOUNDRY CO.  
STEEL FOUNDRY DIVISION

LONGUE POINTE PLANT - CANADIAN CAR & FOUNDRY CO., LIMITED

L.P.I





COPYRIGHT  
A I M A P S  
LIMITED

WELLAND PLANT. CANADIAN CAR & FOUNDRY CO., LIMITED



WELLAND PLANT. 1936.

6/10 724  
29-3-36





BRANTFORD PLANT. CANADIAN CAR & FOUNDRY CO., LIMITED



BRANTFORD PLANT. 1936.

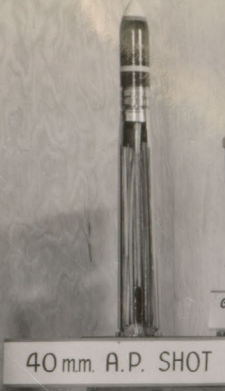
C/0714  
17-5-36



SECTIONED AMMUNITION



4" NAVAL Mk XVI



40 mm. A.P. SHOT



GRENADE No 68



75 mm SMOKE



GRENADE No 69



ANTI-TANK MINE MK V



GRENADE No 36



40 m.m. H.E. A.A.



75 m. SHOT



25 Pounder H.E.



25 PDR A.P. SHOT



25 Pounder SMOKE



A.P. SHOT



3.7" ANTI-AIRCRAFT H.E.

4" NAVAL Mk XIX

4.2" BOMB TRENCH MORTAR

2 PDR A.P. SHOT

P.I.A.T.

2" NAVAL ROCKET

17 PDR A.P.C. SHOT

12  
p. 1921 v.



BRANTFORD PLANT 1025



SECTIONED AMMUNITION

GRENADE No 68

GRENADE No 69

ANTI-TANK MINE MK V

GRENADE No 36

40 mm. A.P. SHOT

40 m.m. H.E. A.A.

25 Pounder H.E.

25 PDR A.P. SHOT

25 Pounder SMOK

75 mm SMOKE

A.P. SHOT

75 m. SHOT

25 Pdr. CARTRIDGE

4" NAVAL Mk XVI

3.7" ANTI-AIRCRAFT H.E.

4" NAVAL Mk XIX

4.2" BOMB TRENCH MORTAR

2 PDR A.P. SHOT

P.I.A.T.

2" NAVAL ROCKET

17 PDR A.P.C. SHOT

12  
p. 1921 v.



DD AMIRCOON DE 1888

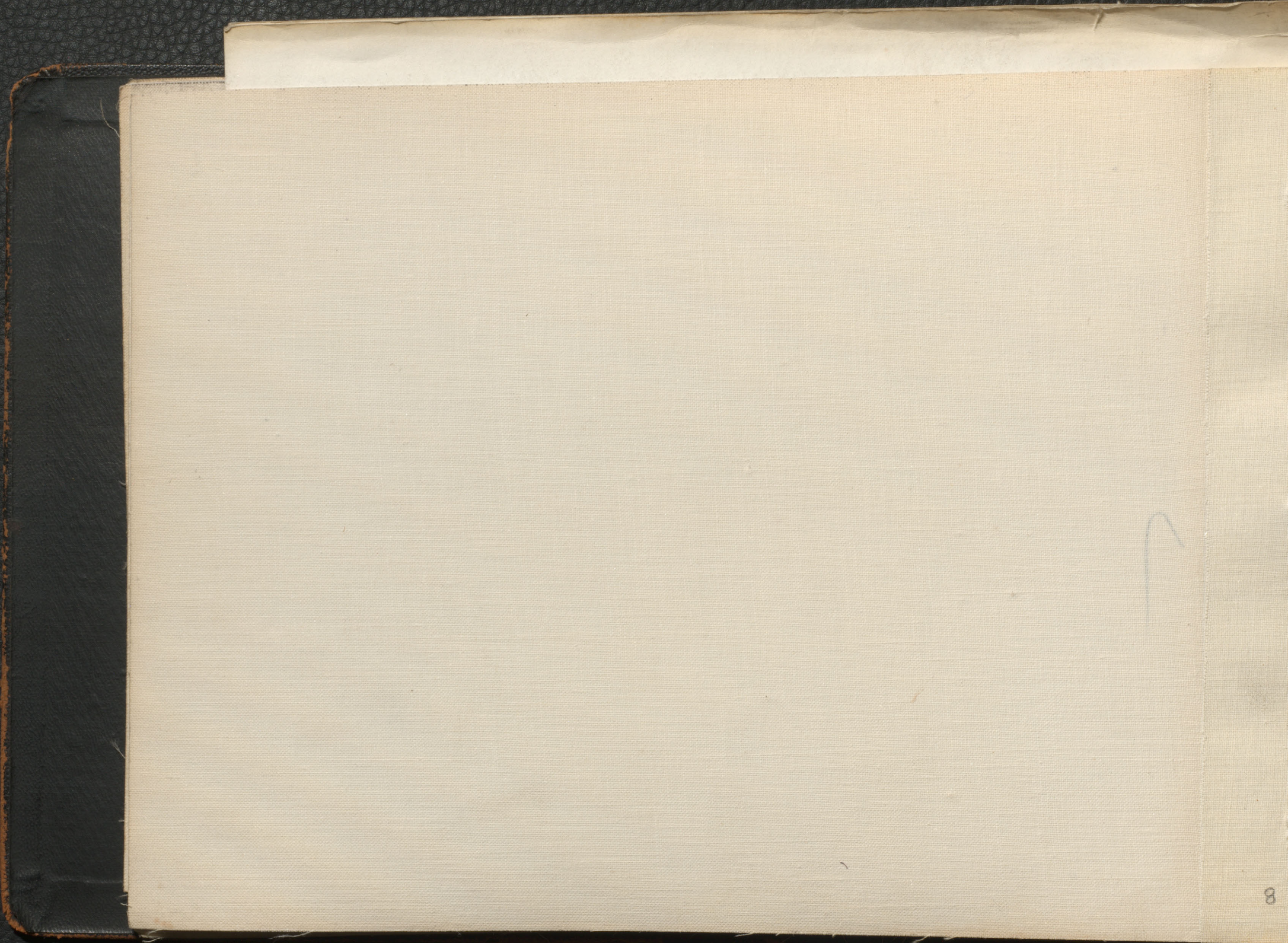




C 1404. RUSSIAN TANK CARS PACKED FOR SHIPMENT - AT CANADIAN CAR & FOUNDRY Co. TURCOT PLANT - OCT 21<sup>ST</sup> 1921

Русские вагоны-цистерны погруженные на Американские вагоны для отправки на пароход с завода Канадиан Кар энд Фрундри Ко. в Монреале Канада. Октябрь. 1921 г. 12.





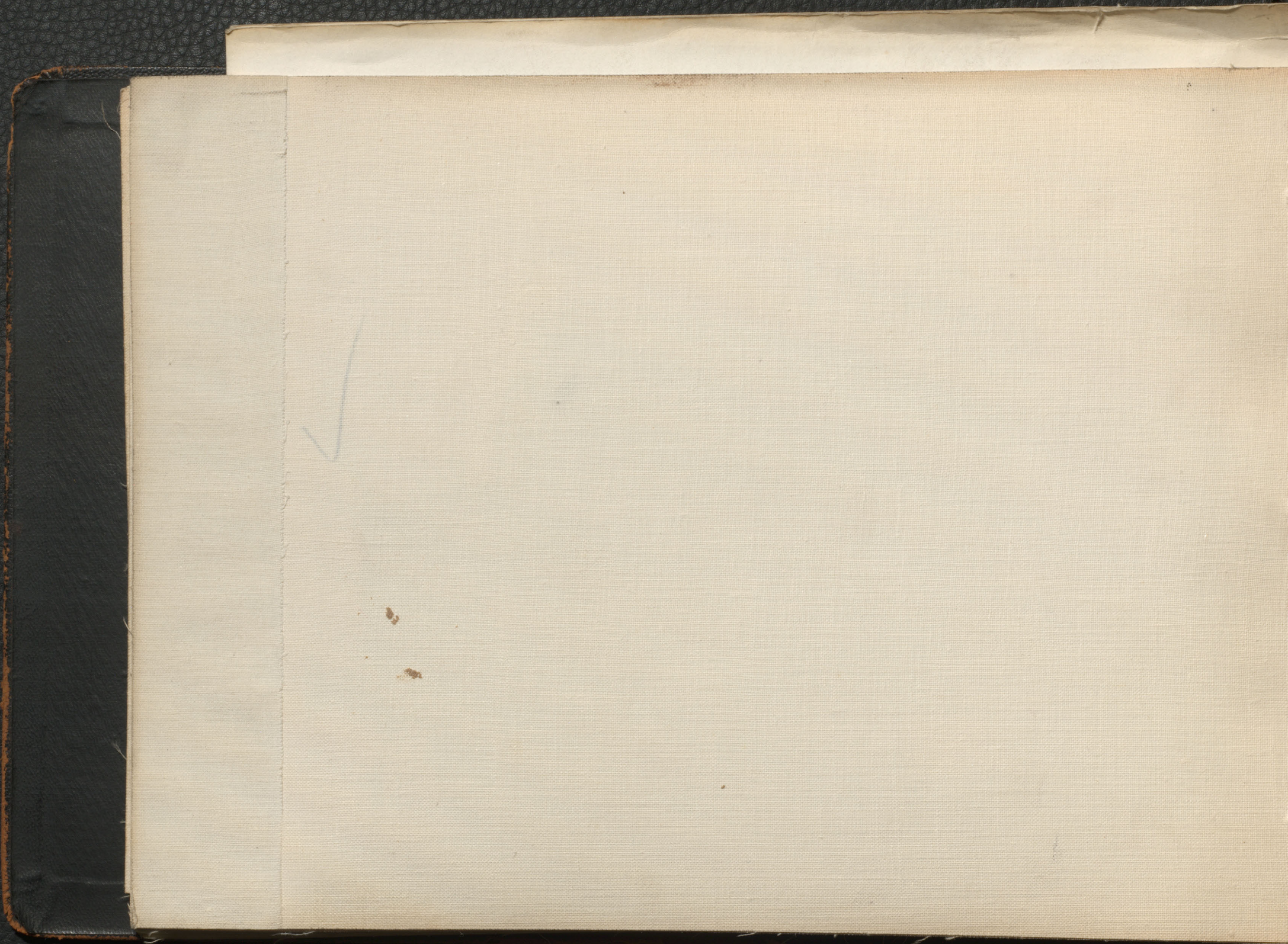




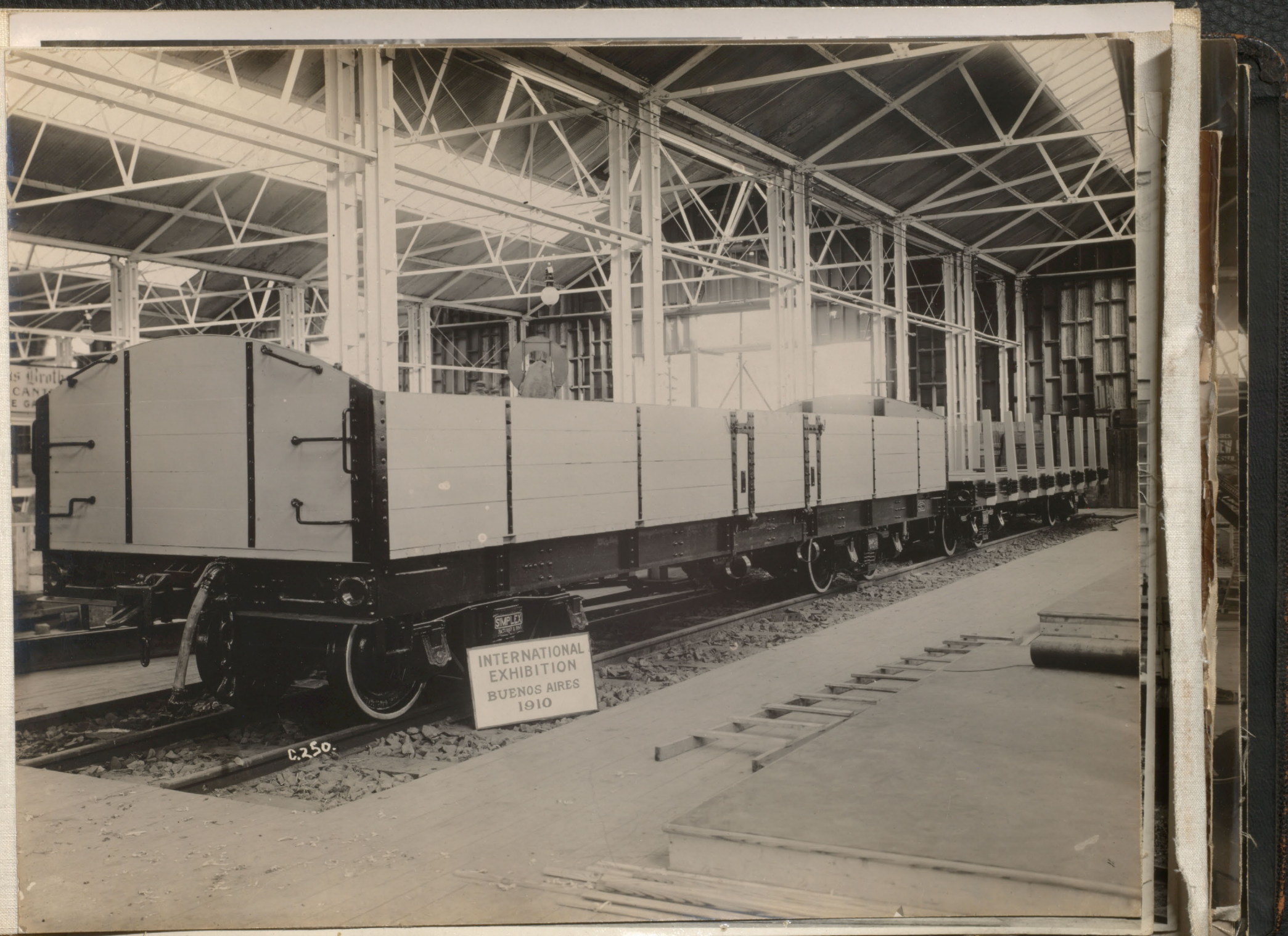
C1394. MONTREAL WORKS - CC & FG - OCT 1921 - 8000 WINE GALL TANK CAR FOR RUSSIAN SOVIET GOVERNMENT

Постройка русских вагонов-цистерн на заводе Канадских  
железных дорог в Монреале







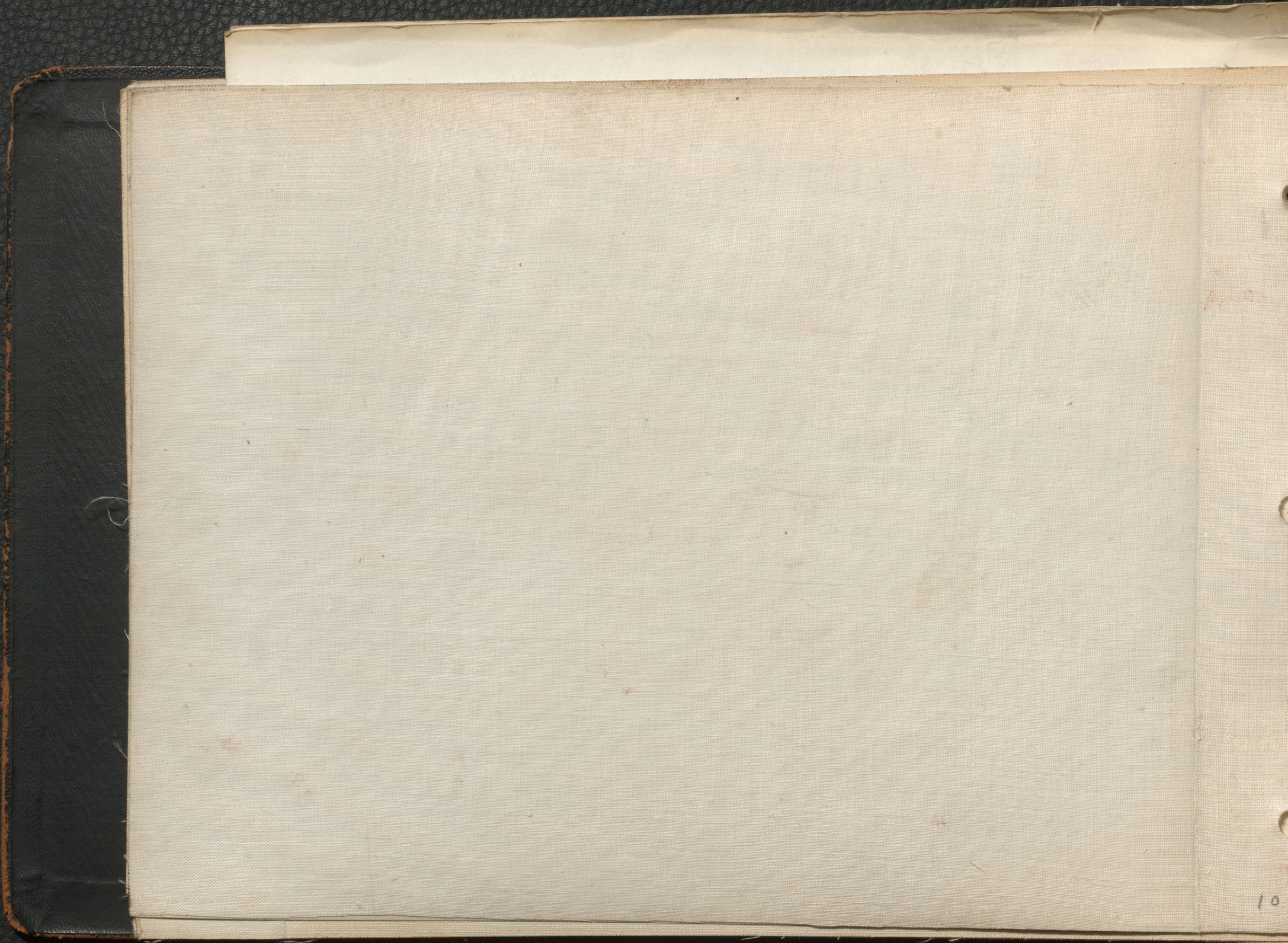


INTERNATIONAL  
EXHIBITION  
BUENOS AIRES  
1910

0250

SIMPLEX  
FACTORY & CO.









Ник. Ж. Д.

365200

1200

365200

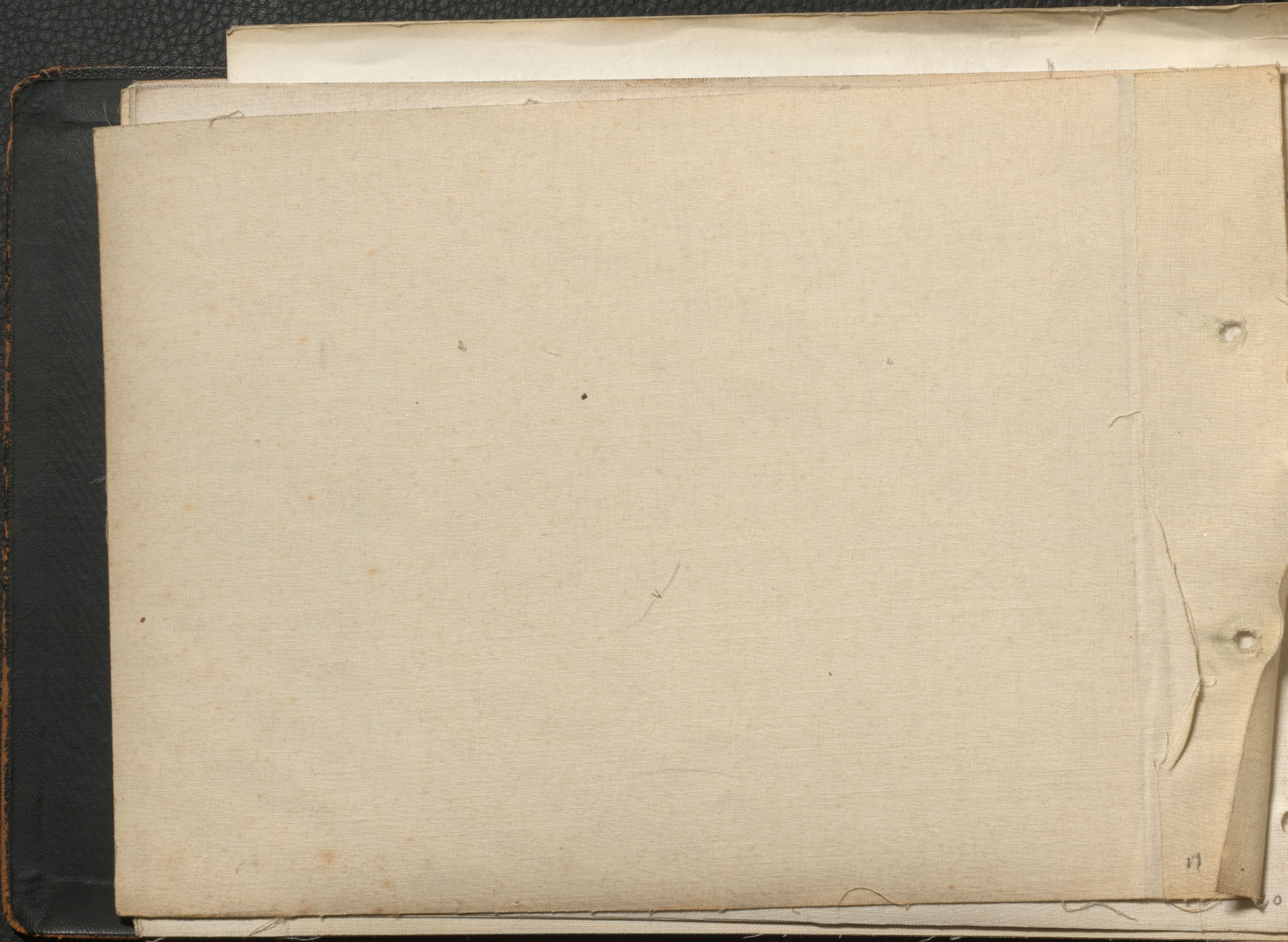
КАНАДСКИЙ  
ВАГОНСТРОИТЕЛЬНЫЙ  
ИЛИТЕНЬИЙ ЗАВОДЪ.  
МОНТРЕАЛЬ, КАНАДА  
1917 г.

200365

А 664 ПУ

ГР-1200 П

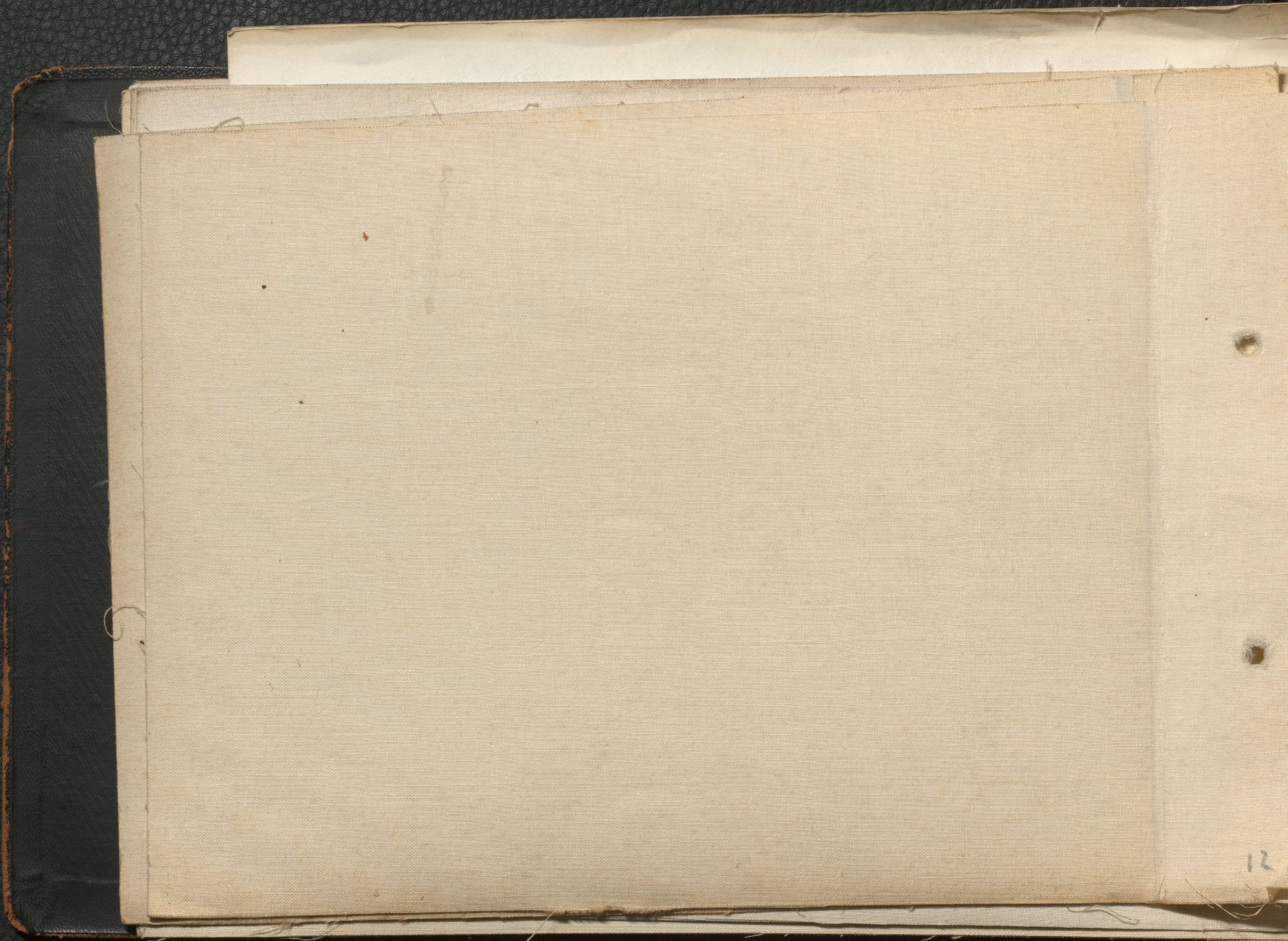
















CANADIAN  
CAR & FOUNDRY CO. LTD  
MONTREAL

CARGA MAXIMA 30000 KILOS

SIMPLEX  
PATENT & TRADE

INTERNATIONAL  
EXHIBITION  
BUENOS AIRES  
1910

C.148.









CANADIAN CAR  
MUNITIONS LIMITED

EXPLOSIVES

OBSERVE CLEAN CONDITIONS

C.C.M.  
11

CAPY 37000  
LD.LMD. 37400  
LT.WT. 14100  
CU.FT. 1104

BLT 6-41

CANADIAN CAR & FOUNDRY  
LIMITED  
BUILDERS  
OF MONTREAL, QUEBEC

C 5843. C.C.F.C.O. JUNE 1940 - LOT 1470 - 10 TON BOX CAR FOR CANADIAN CAR MUNITIONS LIMITED









C-9338 C.C.&F.CO.LTD. NOV. 1952 LOT 1935 MULTIPLE UNIT MOTOR COACH FOR C.N.R.





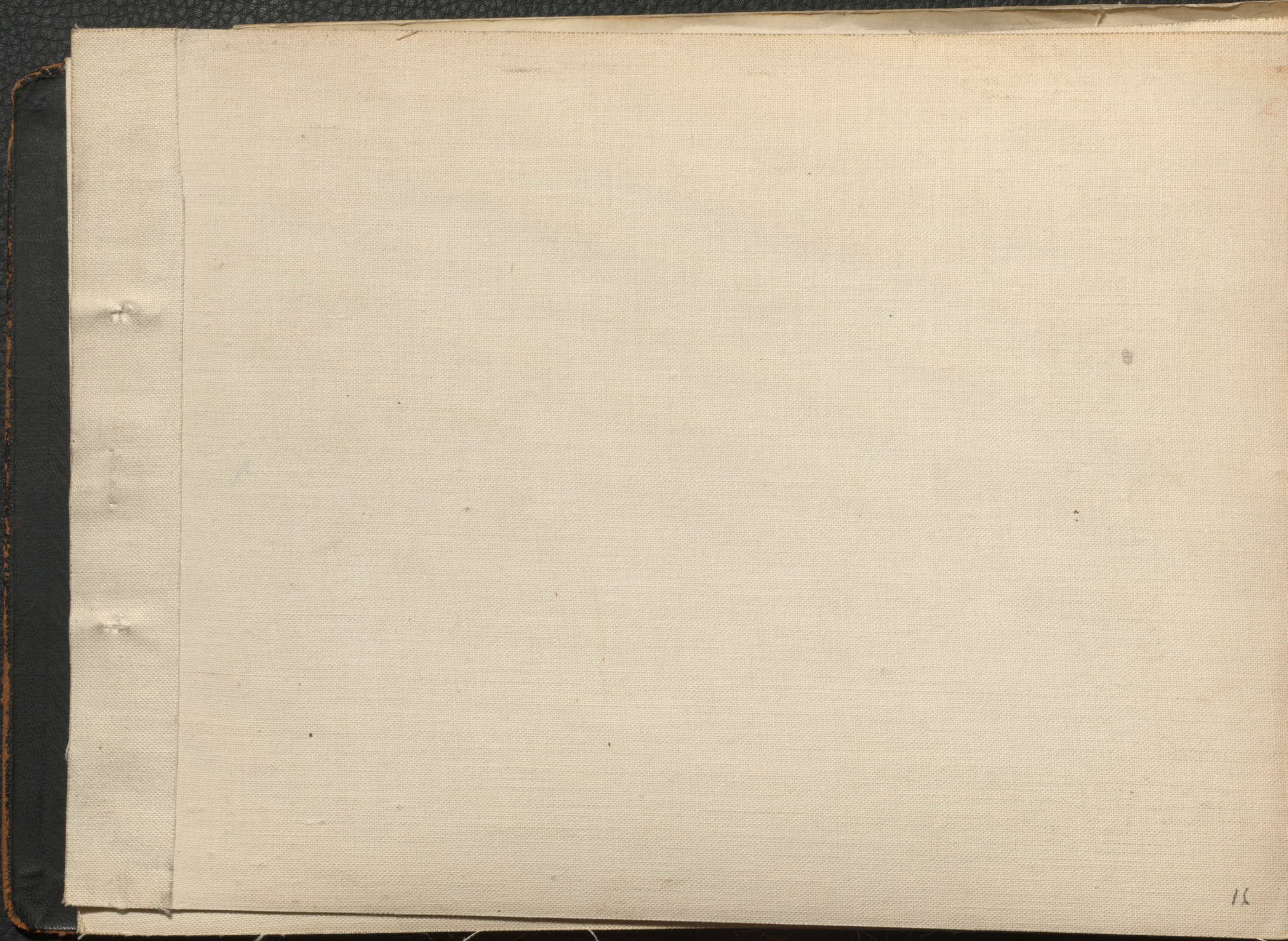




C-9335

C.C.&F.CO.LTD. NOV. 1952 LOT 1935 MULTIPLE  
UNIT MOTOR COACH FOR C.N.R.









C-5007 C.G.F.CO.LTD. SEPT. 1937-LOT. 1168. 36' 30-TON ALL STEEL U'FRAMES & TRUCKS-TRINIDAD. GOVT. RY









CANADIAN  
CAR & FOUNDRY CO. LTD  
MONTREAL

CARGA MAXIMA 30000 KILOS

INTERNATIONAL  
EXHIBITION  
BUENOS AIRES  
1910

THE DEVELOPERS  
OF THE  
INTERNATIONAL EXHIBITION  
BUENOS AIRES  
& THE  
MANAGEMENT









CANADIAN  
CAR & FOUNDRY CO. LTD  
MONTREAL

CARGA MAXIMA 30000 KILOS

INTERNATIONAL  
EXHIBITION  
BUENOS AIRES  
1910

SIMPLEX  
TRUCKS & B.V.









C.681 TURCOT, JAN'Y. 1916 LOT 342  
CANADIAN CAR & FOUNDRY CO. LIMITED  
ENGINE PULLING TRAIN OF CRATED BELGIAN CARS









CANADIAN  
CAR & FOUNDRY CO. LTD  
MONTREAL

CARGA MAXIMA 30000 KILOS

INTERNATIONAL  
EXHIBITION  
BUENOS AIRES  
1910

C.247

THE REPAIRWORKS CO.  
HERZOG & NEHRW  
& ENGINEERS  
MANCHESTER









CANADIAN  
CAR & FOUNDRY CO. LTD  
MONTREAL

CARGA MAXIMA 30000 KILOS

INTERNATIONAL  
EXHIBITION  
BUENOS AIRES  
1910

SIMPLEX

C-248.



Photo. C-248

DC&F Lot 31

Sample box car for Argentine Exhibition





C. 64.



Photo. C-64  
DC&F Lot 31

Sample box car for Argentine Exhibition in process  
of erection







Photo. C-247

Dominion Lot 31

Sample Box car for Argentine Exhibition





Ник. Ж. Д.

200365

1200

200365

КАНАДСКИЙ  
ВАГОНСТРОИТЕЛЬНЫЙ  
ИЛИТЕНЬИЙ ЗАВОДЪ.  
МОНТРЕАЛЬ. КАНАДА  
1917 г.

ТАРА 625 ПУДОВЪ

ГРУ 371200 П

CANADIAN CAR & FOUNDRY CO.  
LIMITED  
MONTREAL, QUEBEC  
CANADA

C. 1000 TURCOT, NOV. 1917 LOT 386  
CANADIAN CAR & FOUNDRY CO. LIMITED  
BOX CAR RUSSIAN GOV'T











