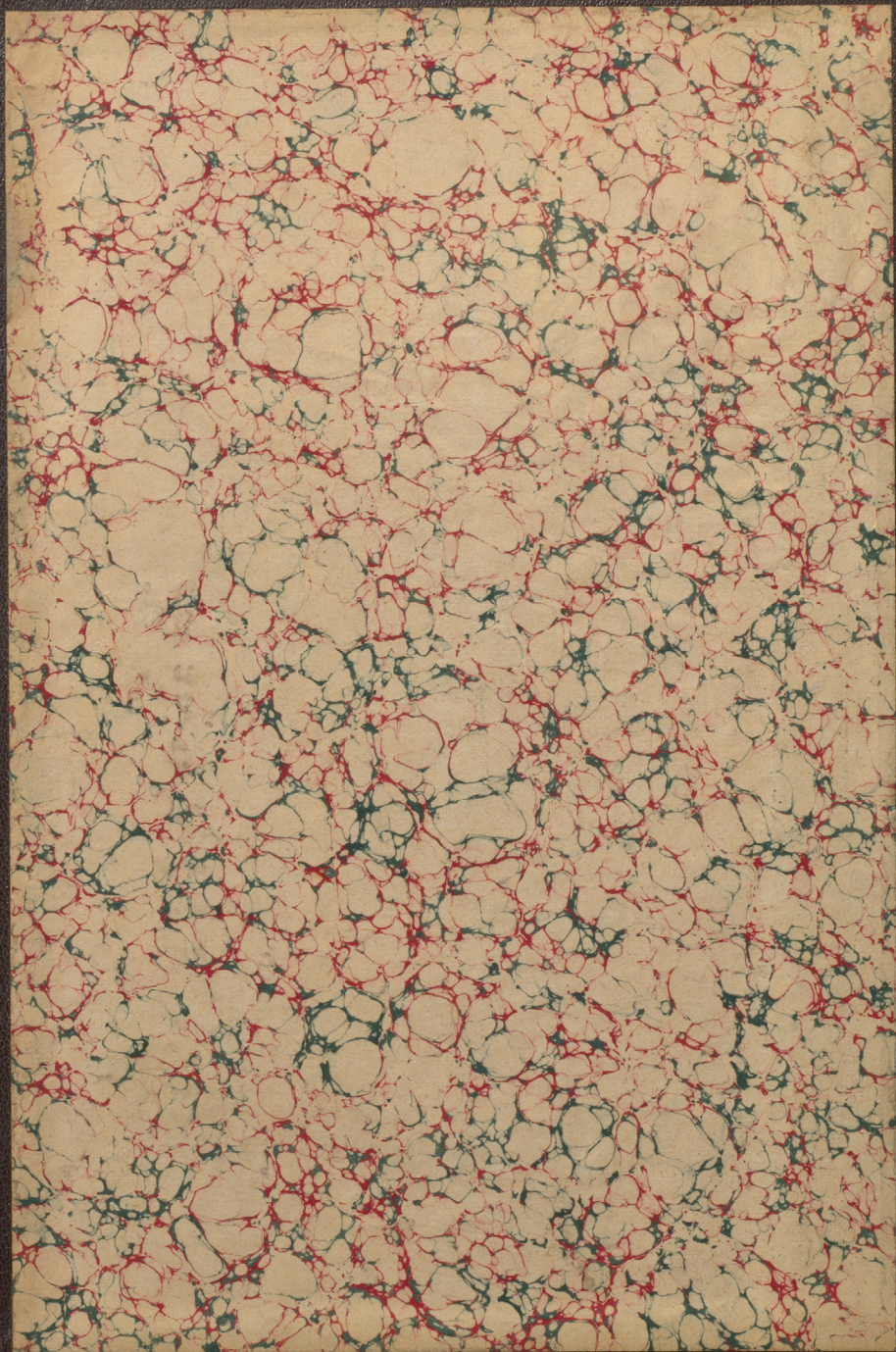


Seige of
Port Arthur





Examining an unexploded 12" Green
shell thrown into Japanese position.



The Colonel of the 3rd Battalion 7th Regiment
+ his staff - taken in front of the
bombproof - on the E. facing fortification.



In the report of the St. Anthonis Fort.



for the negotiations for surrender
are on an Almshouse Cottage
and came from Japanese headquarters
at a large fire had broken out in
Arthur — the Jap. Commissioner
continued to break off negotiations
then General Steele promised
more reinforcements — Reepatch
remain orderly to Steele



Japanese Army transport in the streets
of Wabun.



The War Correspondents listening to
official lecture upon the operations

"



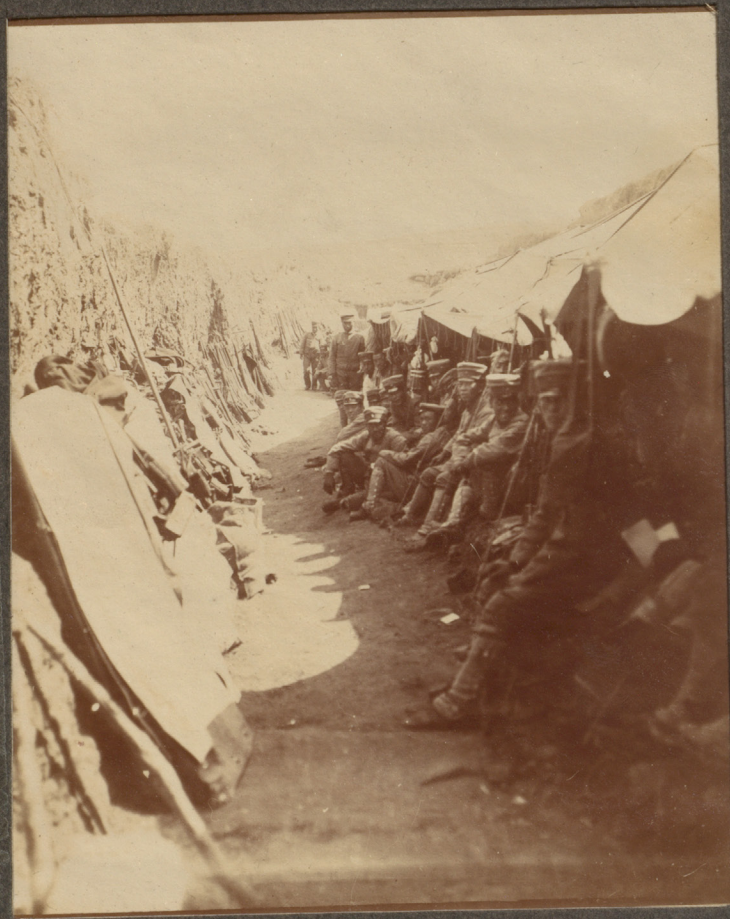
The arrival of the Japanese Korean
delegates at the village of Shunshu
to discuss + decide terms of surrender.



A bombardment of the Eastern Forts
taken from the crest of Hong-Kong-Shan.



The leading trenches on the way to
the front Japanese lines in front of
the N. German fort.



Don't be on the way to the
E. Lansing, Mich. - where the
supports of the Japanese
should be & more



Japanese battery position being
heavily shelled - smoke of
bursting shells rising up over
hills.







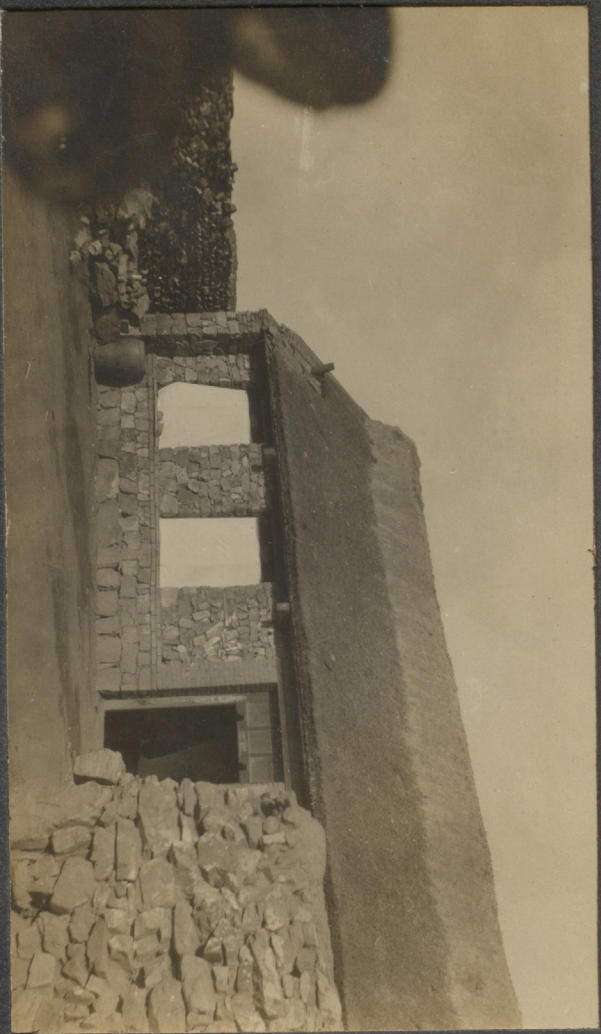




A small tin roof building
just upon the right side
of known Battery position
is known by Japanese
as well as that it was called
"Kaminari" village.



A typical Japanese Camp scene in
near of the lines.



Plumtree Cottage - Shushki Village -
where terms of surrender were signed.



When correspondents questioning the
Hesperian articles about conditions
in Port Arthur.



The most advanced trench line in front
of the E walking Fort - Both walls
are built of sandbags & the flooring
of the trench is covered with straw
to prevent the enemy in the Fort
hearing the movements of the troops.



The most of the North Korean
Fort - taken when the Japanese
were fighting in the capones
galleries, & the enemy held the fort.



A typical scene in the trenches:

troops of the 9th Division in
trenches leading to the German
Make entrance here will







One of the Japanese "Big Bobs"
the 11 "Hovers".



The main transport road through
the Fong-hoang-shan hills.



General Steeple arriving at
Chang-king-ly railway station
on his way from Fort Arthur
to Fuzhou.



The daily shipment of Japanese
wounded to Hainan from the front.



Japanese sanitary corps examining
dead bodies in front of Plumtree
Cottage, while the peace
negotiations were in progress.



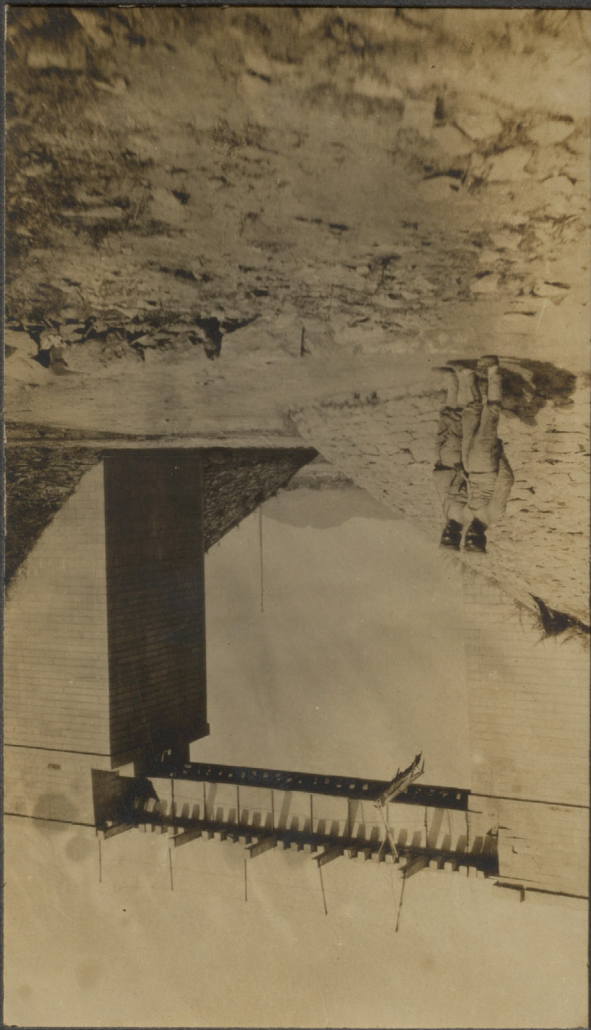
The shelter tents used by the
Japanese Infantry.



The March past of the victorious
Japanese Army in Fort Arthur.



USE that was left of the New England
York after it was blown up and
to Garrison's number 200



One of the railway bridges
close to the front line.



The Japanese War Ballroom



The most dangerous bit of the line
is 7 miles of Fort Arthur close
to Paku-chuang at the foot of
the E. Wuklung Fort -
then cut to pass with shells
& bullets.



General Stearns's arrival at Plunkett
cottage in the village of Shinnoh
to meet General Hoop.



Watching the fight for the capture
of Kamoakiyama Ridge _____



General to the officer & men of the
Japanese Army who were killed upon
the E. G. L. Hill Oct. 30th, 1904.



A Camp scene - Japanese Army -
Showing how the shelter tents
are arranged.



Mrs. Stearns and her adopted
children arriving at Chang-king-tye
from Fort Arthur.



The Yang-hong-shan hills where
the Japanese Artillery positions
were located.

Acc. No

CLASS MK.

DATE

062.249

DATE REC'D

VOL.

3

AGENT

JAN 20 1948

FUND

COST

NOTIFY

SEND TO

PRESENTED Estate of the late
Mrs. Constance R. Smith.

BINDER

BINDING

COST

MCGILL UNIVERSITY LIBRARY
ROUTINE SLIP

