

C
o
,

Aves Passeres. Ampelis

610

Ampelis. L. S. N. 298

585

587

590

Passerina.

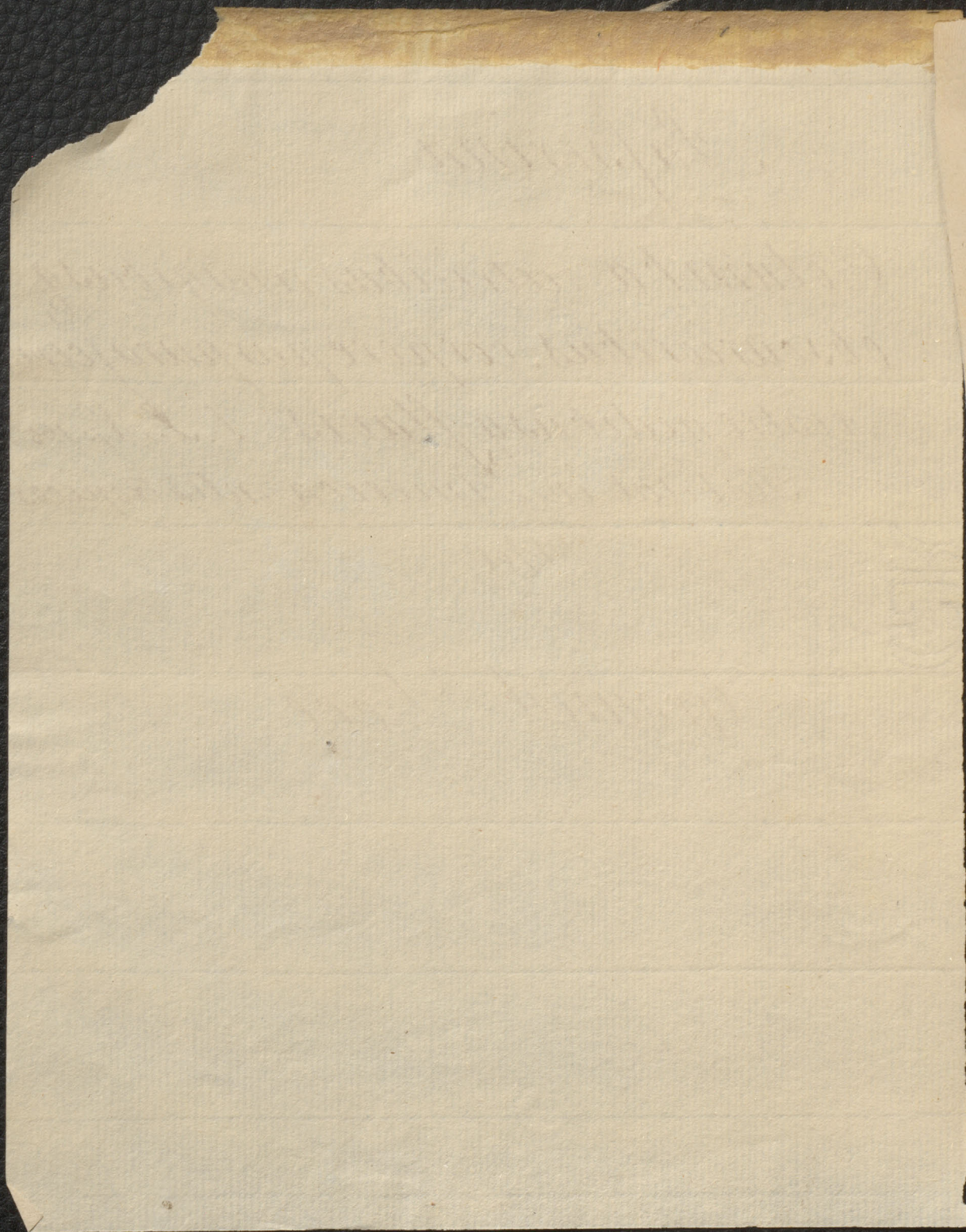
rectum,

lus,

Columba. reatricibus remigibusq
obscurioribus. corpore purpurascente
, rostro pedibusq flavis. L. S. N. 105 ^{gior}
Habitat in America inter tropicos

The

Ground Dove



Aves Passeres. Ampelis

670

587
Cyanocephala

Columba. capite caeruleo.

Habitat in America

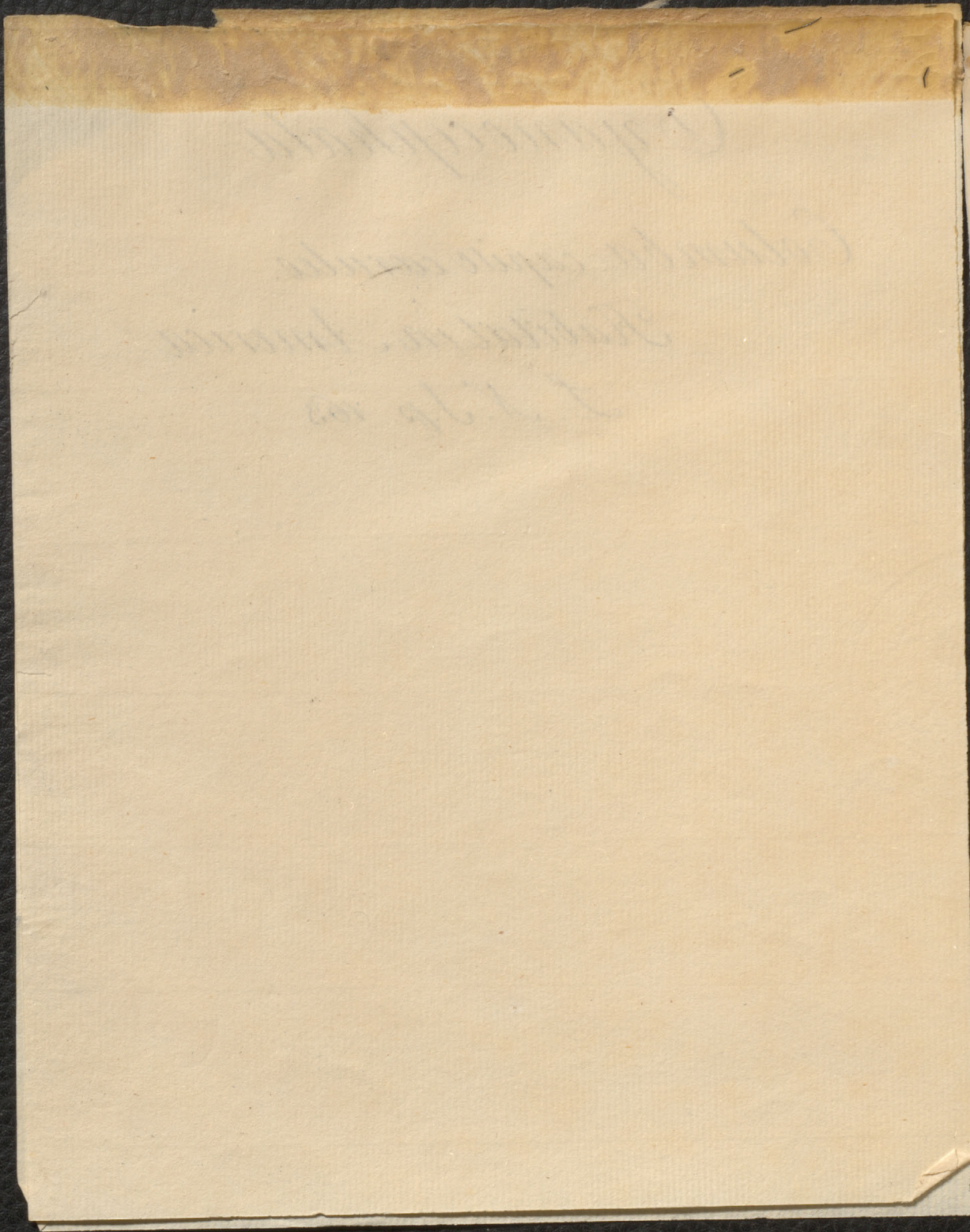
L. N. S. p. 163

590

rectum,

lus,

ngior,



Aves Passeres. Ampelis

610

Nicobarica

~~586~~
588

590

rectum,

lus,

Columba. cauda alba. corpore nigro,
remigibus caruleis, dorso viridi-
niterite, pennis colli elongatis.

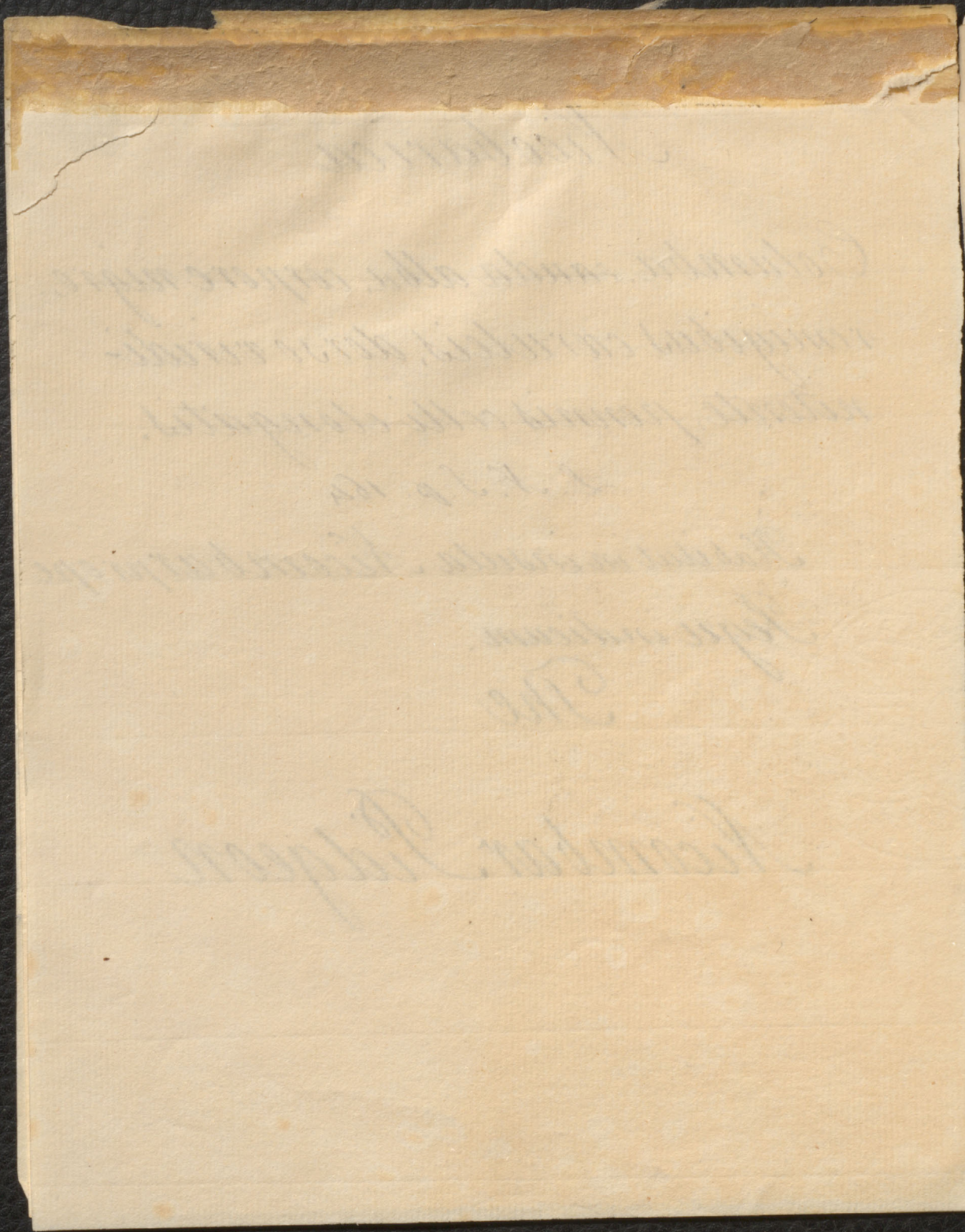
ngior

L. N. S. p. 164

Habitat in insula Nicombas prope
Pegu indicum.

The

Nicombar Pidgeon



Aves Passeres. Ampelis

610

AVES PASSERES ALAUDA

590

590

105 AVES PASSERES ALAUDA

n, rectum,
libus,

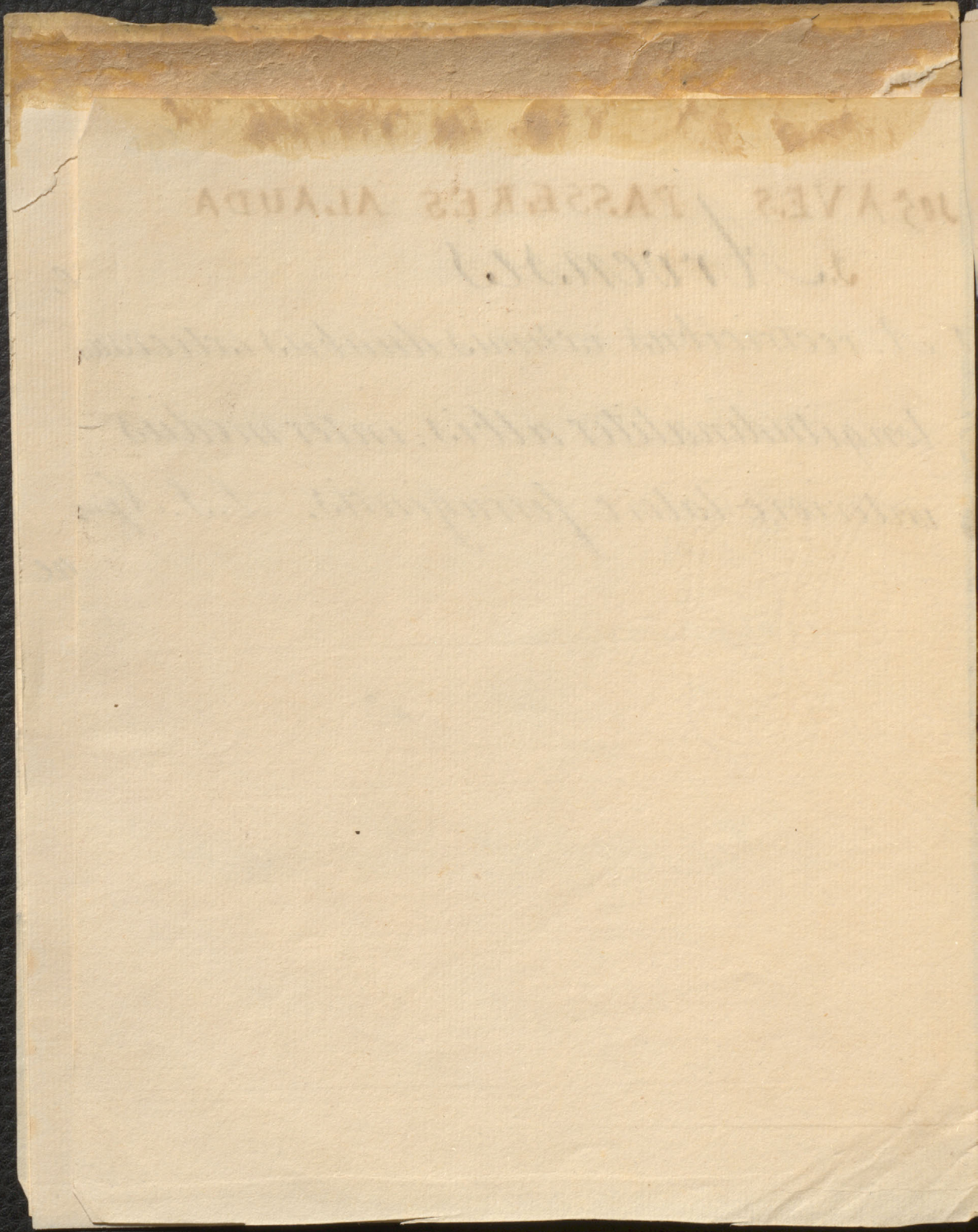
A. crvensis

A. reatricibus extimis duabus extrorsum

longitudinaliter albis: intermediis

longior,

interiore latere ferrugineis. L. S. N. p. 165



USAYES / TASSERES ALAUDA

J. / F. / 1877

Aves Passeres. Ampelis

610

AVES PASSERES ALAUDA

590

105

Alauda

Rostum cylindrico-subulatum, rectum,
recta protensum: mandibulis equalibus,
basi deorsum dehiscentibus.

Lingua bifida.

unguis posticus rectior, digito longior,
L.S.N. 165.

The Lark

for the Discovery of the Longitude
over and above the several sums
we have received for the Funds
of Superintending relations thereto.
Therefore I hope you will excuse
all the trouble you may have had
in this affair & an offer

- N^o 1. The Chick-lark.
2. The Tit-lark.
3. The Wood-lark.

Aves Passeres. Ampelis

610

596

591

AVES PASSERES ALAUDA

4. *Pratensis*

2. *Arectricibus extremis duabus exterioribus*

albis Linea Superciliorum alba

Habitat in Europa L. S. N. p. 166

in 65.

about

e. coll.

- N^o 1. The Chickadee.
2. The Tit-lark.
3. The Wood-lark.

Aves Passeres. Ampelis

610

596

593

AVES PASSERES ALAUDA.

4 *Campestris*

4 *A. rectricibus fuscis inferiore*

medietate, exceptis inter medius
duabus, albis, gula pectoris
flavescente. L. S. N. p. 166

Habitat in Europa

in 65.

about

e. coll.

- N^o 1. The Chick-dark.
2. The Tit-lark.
3. The Wood-lark.

[Faint, mirrored handwriting from the reverse side of the paper, including the name 'G. G. G. G.' and other illegible text.]

Aves Passeres. Ampelis

610

~~AVES PASSERES AMPELIS~~

596

AVES PASSERES STURNUS

594

Vulgaris

Sturnus rostro flavescente. corpore nigro punctis albis. L. S. N. 167

w. 65.

The Common Starling

about

e. Collo

- N^o 1. The Chick-lark.
2. The Tit-lark.
3. The Wind-lark.

[Faint, illegible handwriting on aged paper, possibly bleed-through from the reverse side.]

Aves Passeres. Ampelis

610

AVES PASSERES

596

AVES PASSERES STURNUS

595

106. *Sturnus*

Rostrum subulatum, angulato depresso
obtusiusculum. mandibula superiore
intergerrima, marginibus patentiusculis.
Nares supra marginatæ.
Lingua emarginata, acuta.

The Starling.

w. 65.

about

e. Collo

- N^o 1: The Chick-lark.
- 2: The Pit-lark.
- 3: The Wind-lark.

YVES, TASCHEZ, STRENGE
1860

[Faint, illegible handwriting on lined paper]

Aves Passeres. Ampelis

610

596
AVES PASSERES STURNUS

4 *Contra*

4. *S. fuscus. macula oculo fasci
alori abdomineque albis. L.S.N. p. 67
Habitat in India*

*The Black and White
Benghall Starting*

w. 65.

about

e. Collo

N^o 1. The Chick-lark.

2. The Tit-lark.

3. The Wind-lark.

Aves Passeres. Ampelis

610

597

Luteolus

*Sturnus luteus. capite fusco, pectore maculato
, alis fusco-luteis. L. S. N. p. 167*

Habitat in India

The Yellow Bengal Starling

Ed. . . p. 106

about

e. coll.

- N^o 1. The Chick-lark.
2. The Tit-lark.
3. The Wind-lark.

[Faint, illegible handwriting on the main sheet of paper, possibly bleed-through from the reverse side.]

Aves Passeres. Ampelis

610

599
AVES PASSERES TURDUS

3. *Hiacius.*

3 *Turdus alis subtus flavescens
rectricibus tribus lateralibus
apice utringue albis.*

³
Habitat in Europa.

The Redwing

i,
w. 65.
about
e. Collo

No 1. The Chick-lark.

2. The Tit-lark.

3. The Wind-lark.

Aves Passeres. Ampelis

610

AVES PASSERES. TURDUS

603

11. Orpheus

11 Turdus dorso, pectore retribusq
lateralibus albidis, alis fascia
alba.

L. S. N. p. 167

Habitat in America

w. 65.

about

e. Collo

- N^o 1: The Chick-lark.
- 2: The Tit-lark.
- 3: The Wind-lark.

AVIS TASSERES TURBIS
Cipitellus
The Chick-lark
The Tit-lark
The Wind-lark

Aves Passeres. Ampelis

610

606
605
AVES PASSERES TURDUS

15. *Rosellus*

15. *Turdus Subincarnatus*, capite
alis caudaque nigris, occipite
cristato.

L. S. N. p. 172

habitat in Europa

The Carnation Ouzle

i,

w. 65.

about

e. Collo

N^o 1. The Chick-lark.

2. The Tit-lark.

3. The Wind-lark.

Aves Passeres. Angelis

610

606

AVES PASSERES TURDUS.

22

Merula

22. *Turdus. ater rostro palpebrisque
fulvis.*

L. S. Sp. 170

Habitat in Europa

The Black Bird

about

e. Colla

- N^o 1: The Chickadee.
- 2: The Tit-lark.
- 3: The Wind-lark.

THE CHICKADEE
THE TIT-LARK
THE WIND-LARK

Aves Passeres. Ampelis

610

607
AVES PASSERES TURDUS

23

Torquatus

23 T. nigricans, torque albo.

Linn. s. n. 170. n. 13.

i,
w. 65.

about

e. colla

N^o 1: The Chickadee.

2: The Tit-lark.

Aves Passeres. Ampelis

610

109 AVES PASSERES AMPELIS.

609

Garrulus.

L. remigibus secundariis apice membranaceo

w. 65.

colorato, cauda integra.

L. S. Np. 95

Habitat in Europa.

The Bohemian Chatterer

about

e. Collo

N^o 1: The Chickadee.
2: The Tit-lark.

[Faint, mirrored handwriting from the reverse side of the paper, including the word "The" and "Chickadee"]

Aves Passeres. Ampelis

610

Ampelis. L. J. N. 298

Cotinga. 4. Ampelis nitidissima carulea.

subtus purpurea, alis Pandag nigris,

Cotinga Bris. av. 2. p. 340, ~~34~~ f. 1

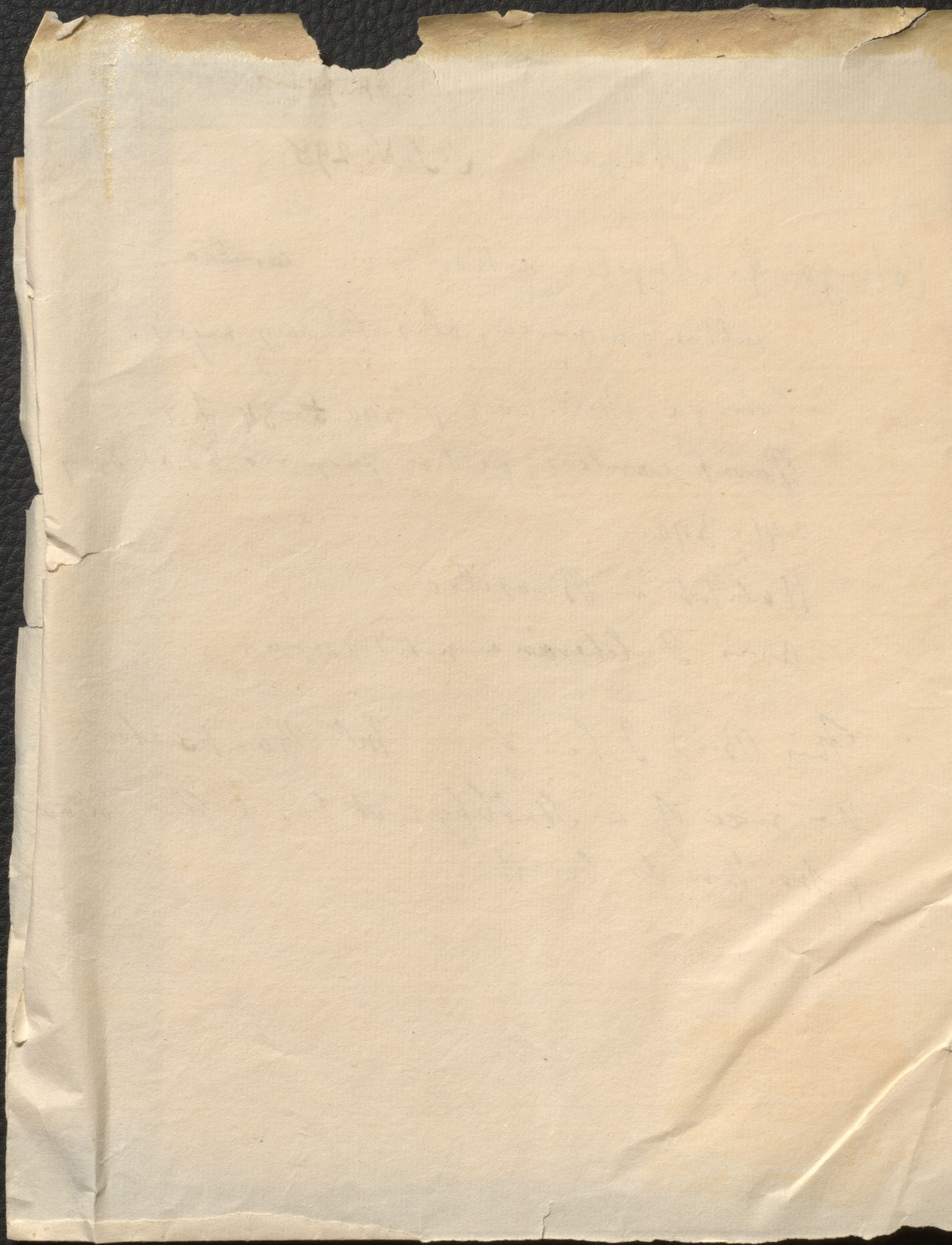
~~Parus~~ caruleus, pectore purpureo. Ed. av. 65.

241. 340.

Habitat in Brasilia.

Avis Pulcherrima nitidissima.

This Bird I had from Mr Banks about
the size of a Starling. it has a blue collar
passes thro its breast.



AVES PASSERES TURDUS

611

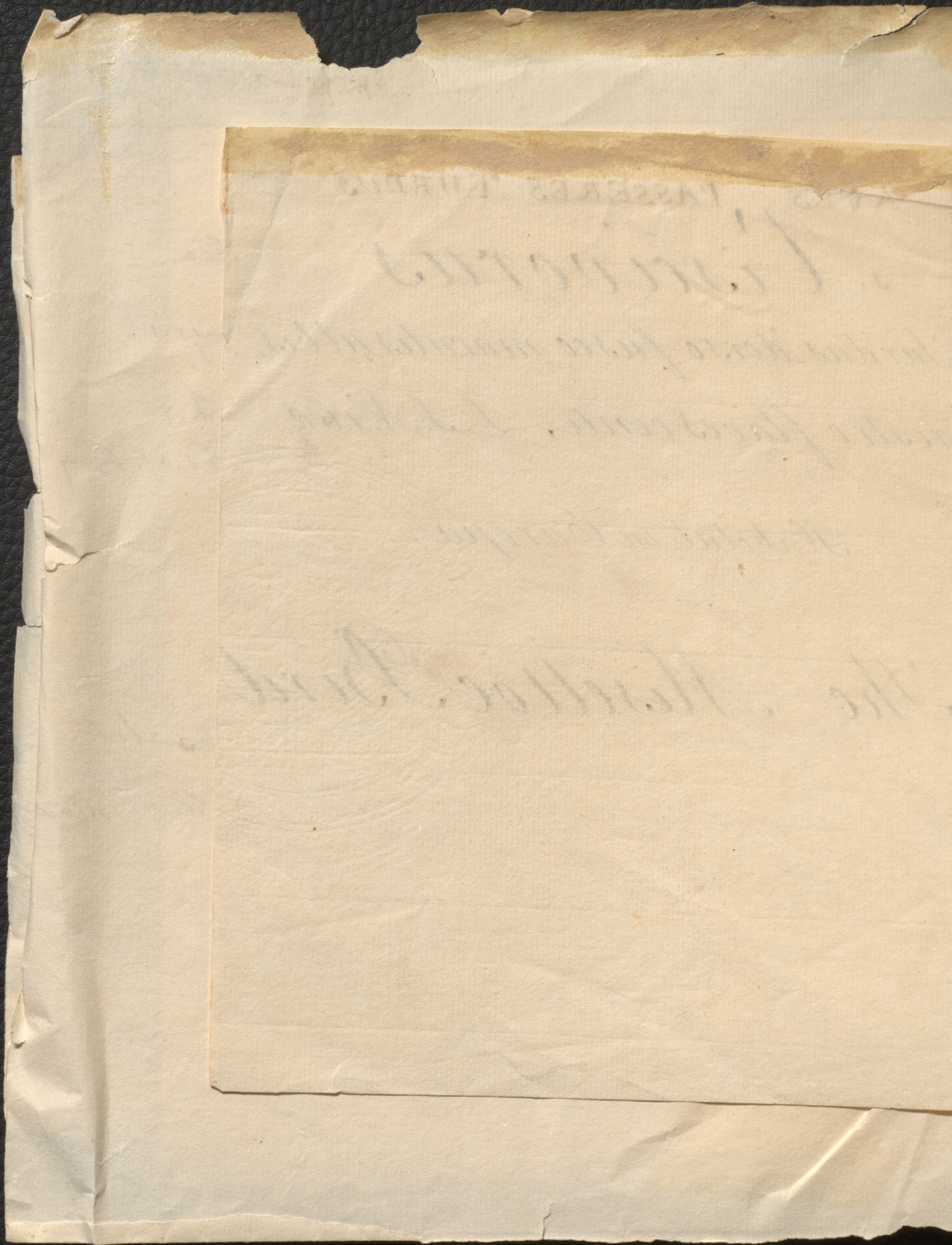
s. *Ciscivorus*

s. *Turdus dorso fusco maculis albis,*
rostris flavescente, L. S. N. 160

Habitat in Europa.

The Miseltoe Bird

under names.



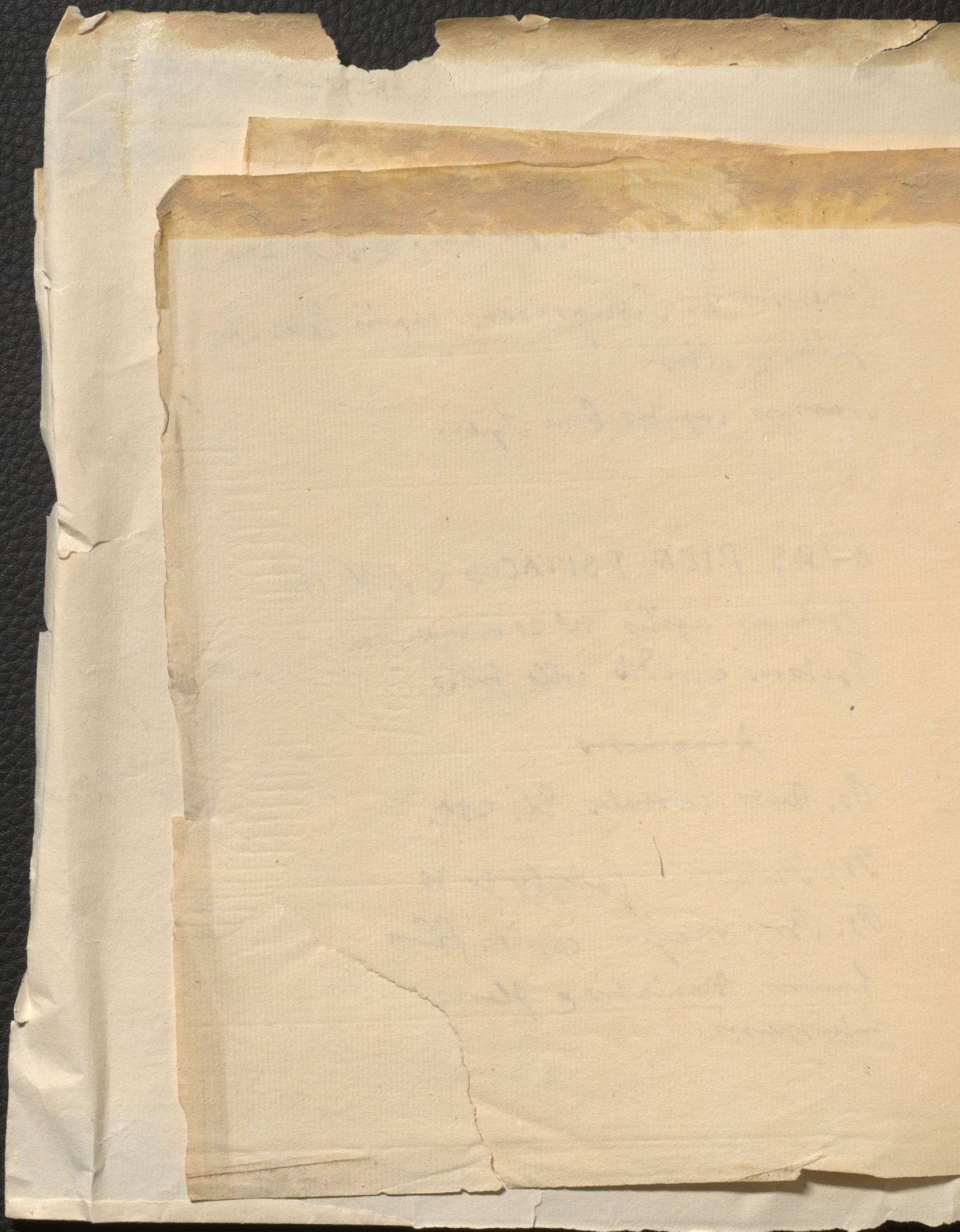
618
612

Aves Papaveres Turnus. L.S. N. 290
 Capensis 2. J. nigricans capitis lateribus
 rubris & albus,
 humerus capitis boni speciei.

AVES PICEAE PSITACUS L.S. N. 146
 Psittacus agilis no 20 in mus. Brit. &
 Psittacus viridis collo fusco.

Aruginosus

Ps: Auro. coronatus Ed: 255.
 Ps: Paradisii Lathby 1-10
 Ps: Br: Major. capite flava
 humeris striatis & flavis
 interspersis.



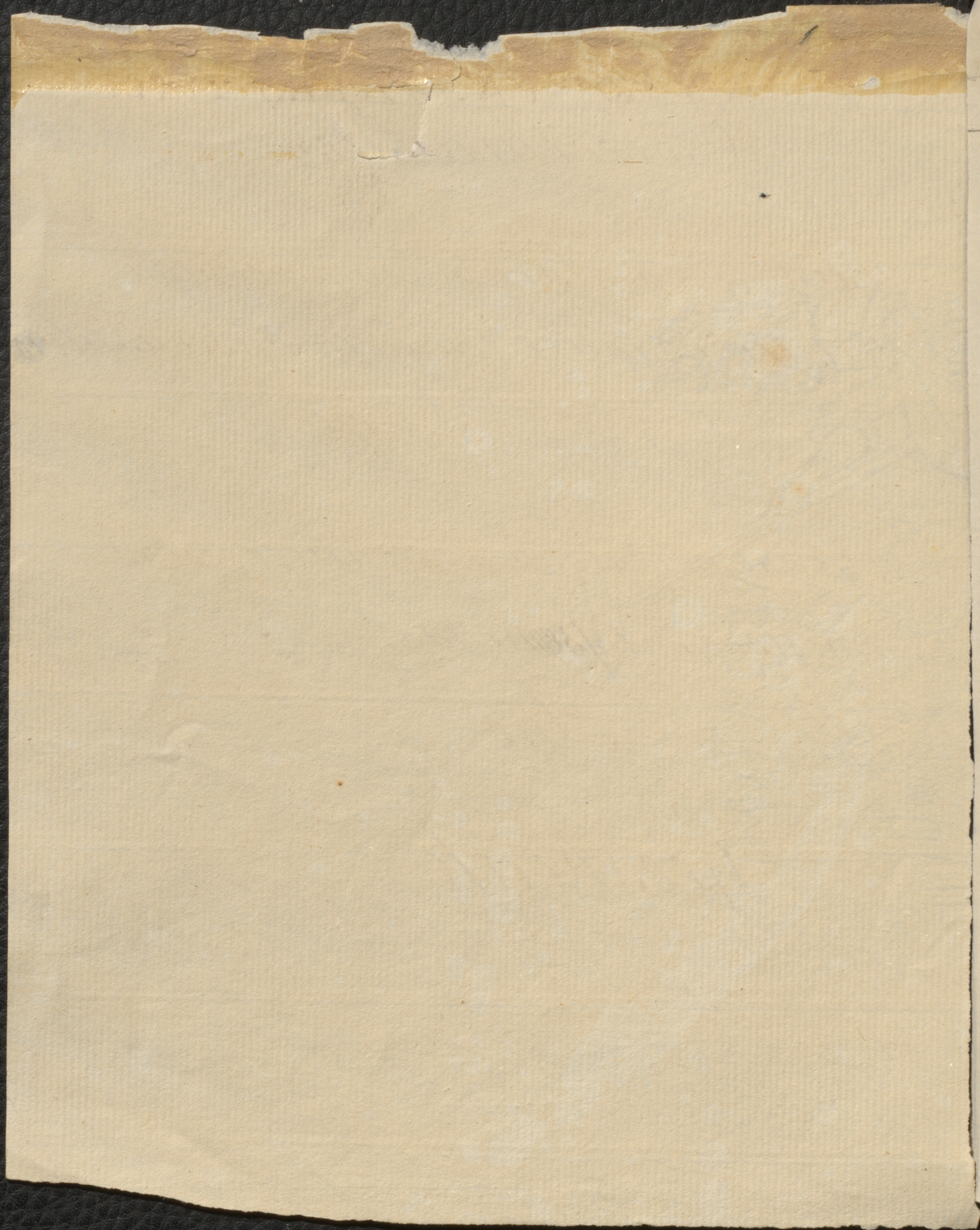
AVES PASSERES Loxia
Coccothraustes

*Loxia. linea alarum simplicia alba,
 rectricibus latere tenuiore baseo us albis*

L. N. S. p. 171

*Habitat in Europa australiori, cerasa
 enucleans, disseminat.*

The
 Grosbeak



678
614?

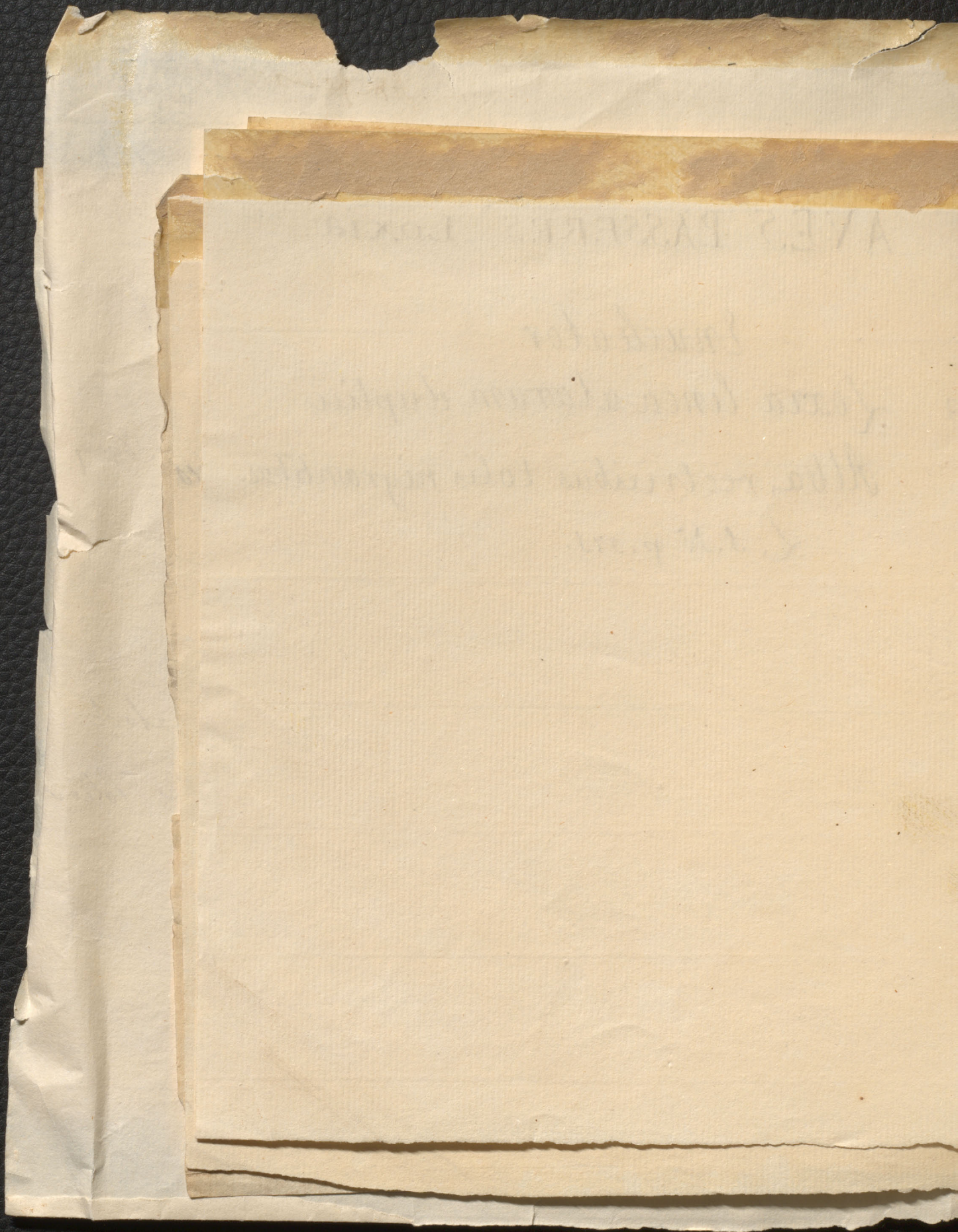
AVES PASSERES Loxia.

Enucleator

3 Loxia linea alarum duplici

Alba, rectricibus totis nigrantibus.

L. S. N. p. 175.



AVES LOXIA.

AVES PASSERES LOXIA

617

AVES PASSERES LOXIA.

616

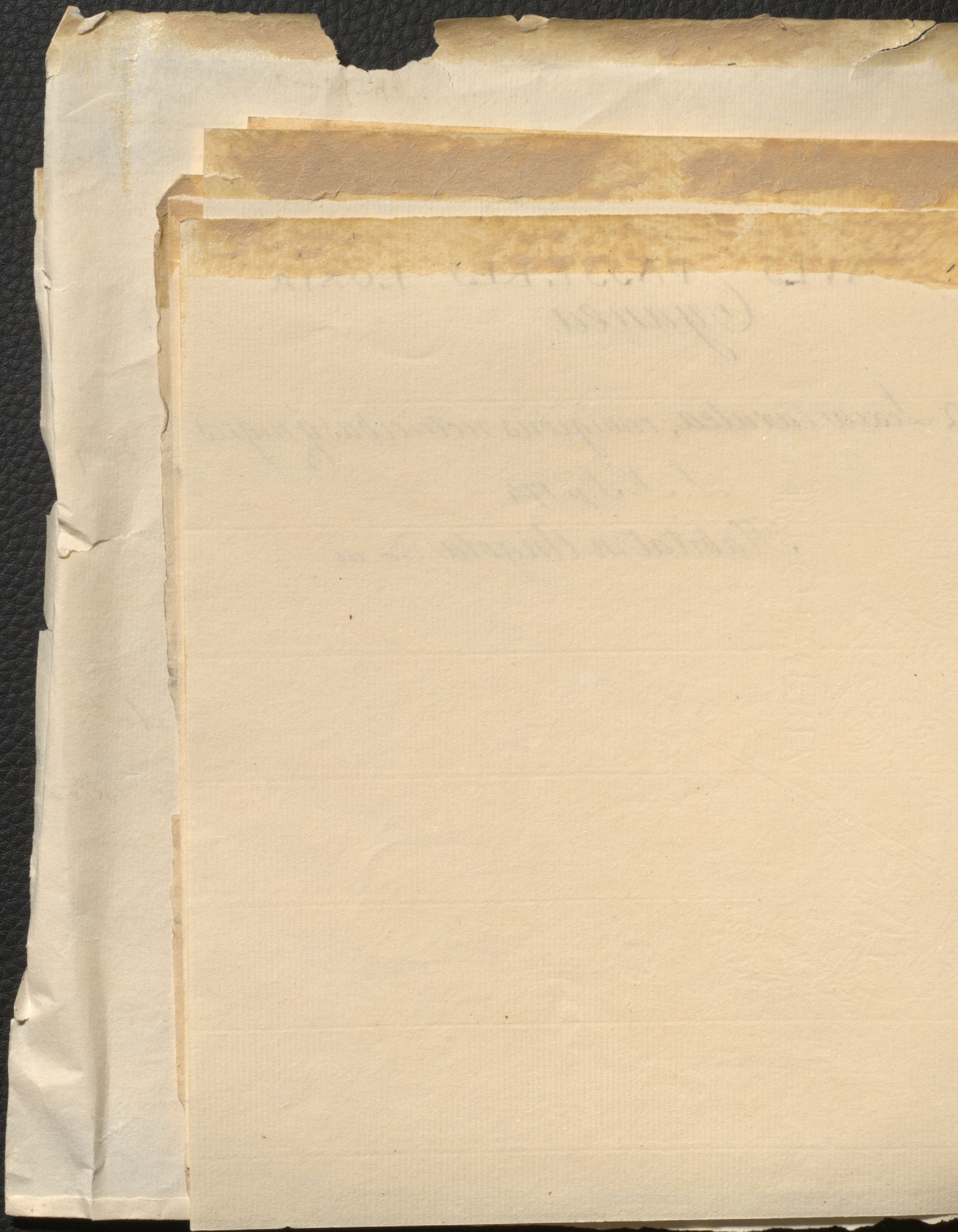
Cyanea

22 *Loxia caerulea*, remigibus rectricibusque nigris

L. N. S. p. 174

Habitat in Angola! Edw. 125

The Virginian Nightingale



AVES PASSERES Loxia.

Cardinalis

5 Loxia rubra, facie nigra. L.S.N. p. 172

Habitat in Virginia &
in America Septentrionali

The Virginean Nightingale.

The Hen winking

17th Dec 1841

Cardinalis


of the order of the ...

Habitat in ...

The ...

Aves Passeres Loxia

618

♂.  Dominicana.

Loxia nigra, capite gulaq; ^{coeruleis,}
pectore abdomine regionumque
marginibus albis.

Habitat in Brasilia.

LOXIA.

619

AVES . PASSERE . LOXIA

Tyrthula

*Loxia arbutus nigris letricibus caudae
remigum posticarum albis. L. N. S. p. 171*

Habitat in Europa sylvis,

fr. sorbi disseminator

The

Bul-finch

WATER . PASSER . 1861

[Faint, illegible handwriting]

[Faint, illegible handwriting]

LOXIA.

620

AVES . PASSERES . LOXIA

Erycephala

10 *Loxia cinerascens*, capite purpurascente pectore albo maculato. N. S. N. 172

Habitat in Angola in Africa

The Sparrow of
Paradise Edw. p. 150

The Hen warbling

AVES. LABORER. 1848

Photograph

In a letter from the Secretary of the
Board of Education, dated 1848, it is
stated that the Board of Education
has decided to purchase a lot of
land in the city of New York for
the purpose of erecting a school
house for the colored people of
the city.

The location of
the school house is
in the city of New York.

623

COXIA.

620
620
621
?

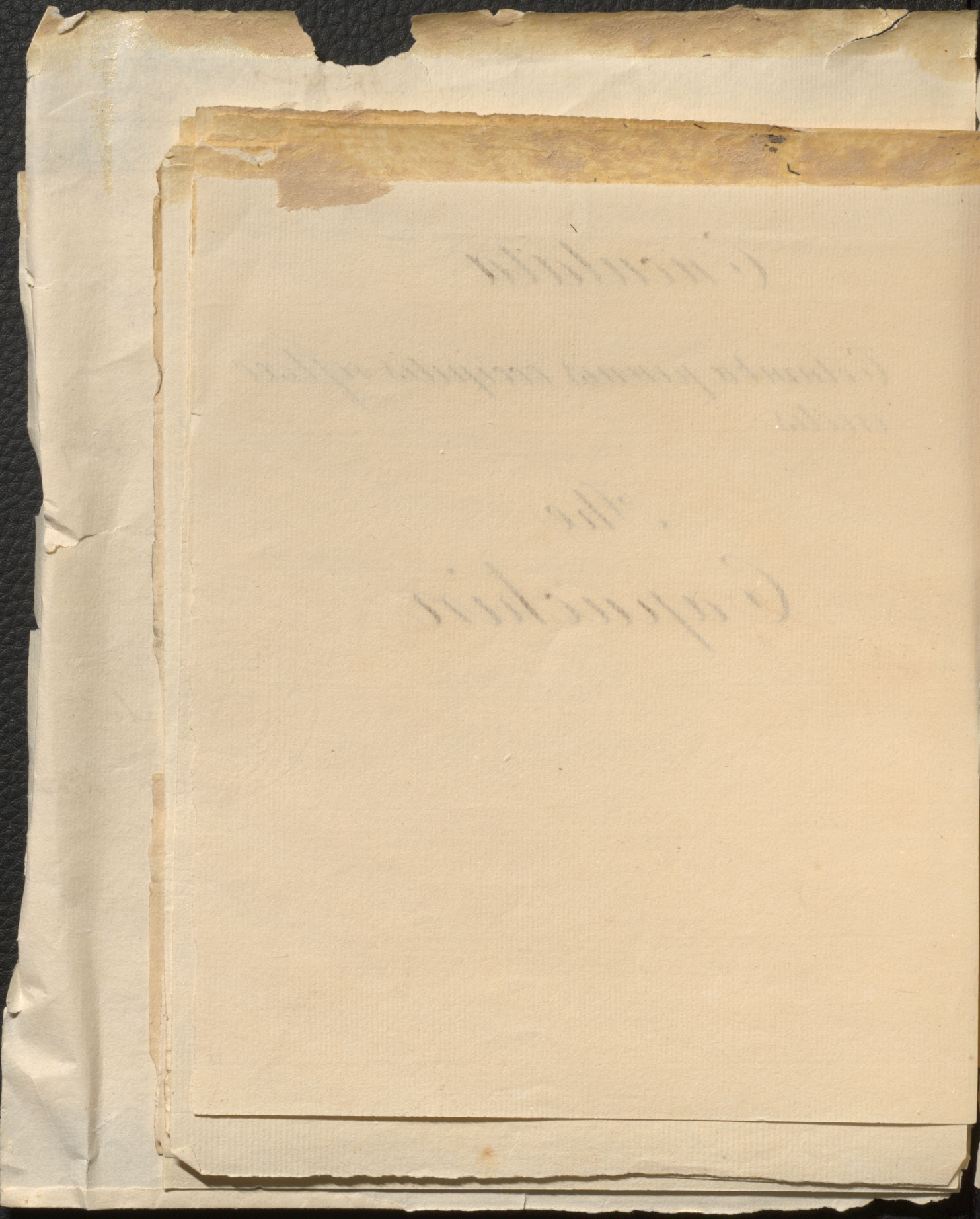
Cuculata

*Columba pennis occipitis reflexo
erectis*

a

*The
Capuchin*

621



623

COXIA.

Cucullata

620

*Columba pennis occipitis reflexo-
-erectis.*

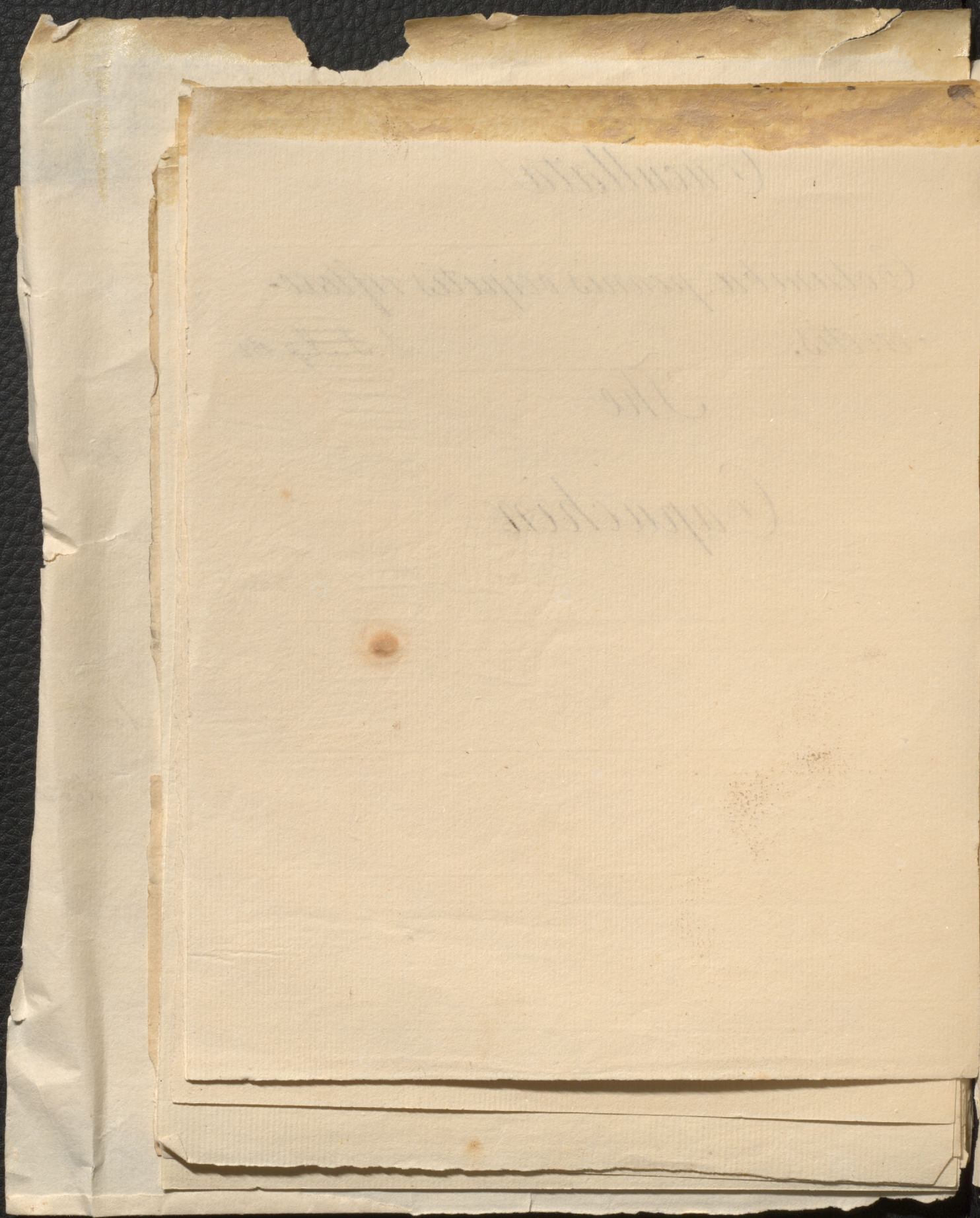
L. J. N. p. 182

The

Capuchin

ve
02
s
ra

621



AVES. PASSERES. LOXIA.

Montana

Columba. obscure rufa subtus
flava, orbita oculorum rufesca
sanguinea.

L. N. S. p. 163

Habitat in Jamaica

623

620

675?

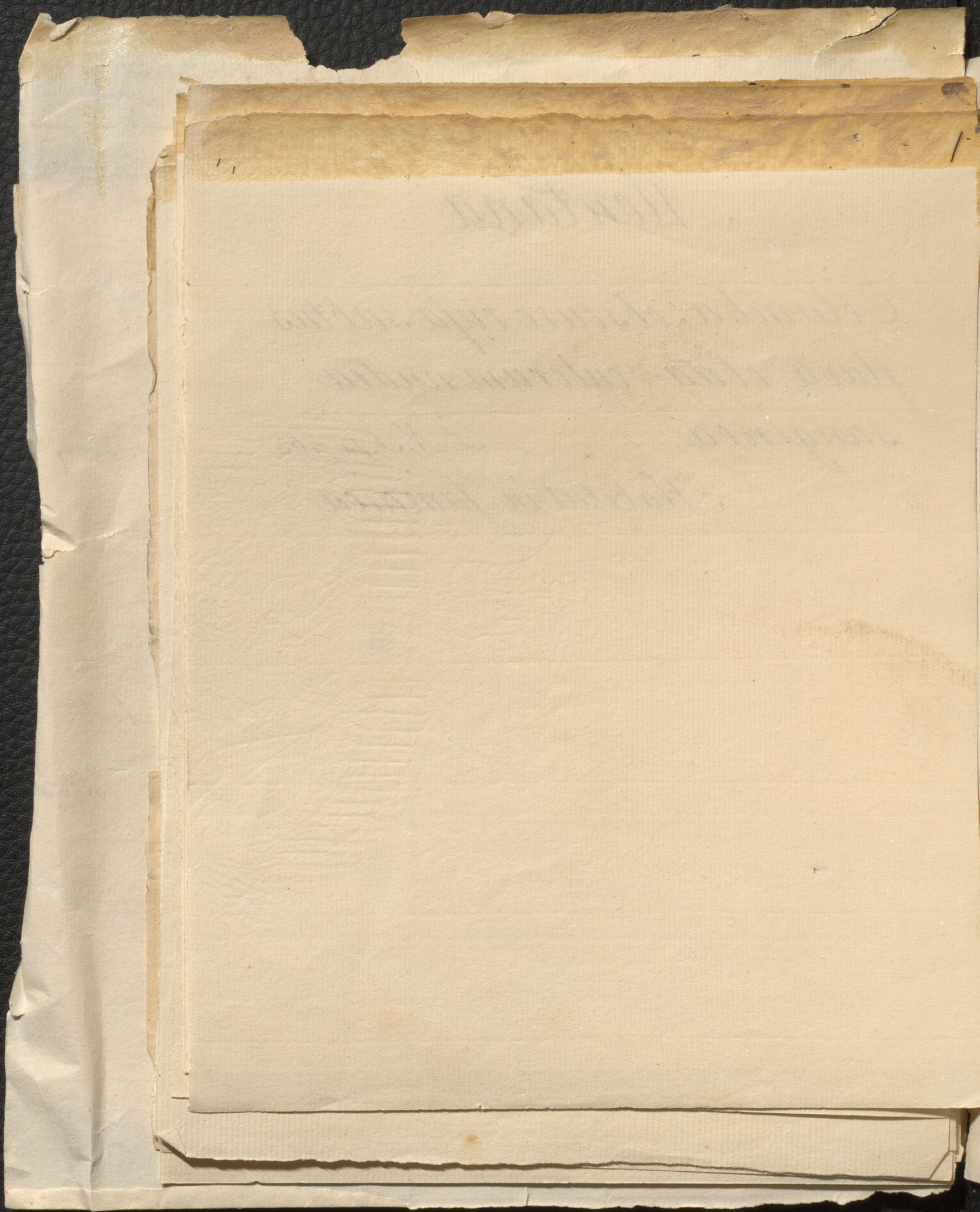
ne

02

s

ra

621



AVES, PASSERES, LOXIA.

AVES PASSERES LOXIA

622

ne

302

AVES

PASSERES

LOXIA

Moya

621

||

Loxia fusca, capite albo

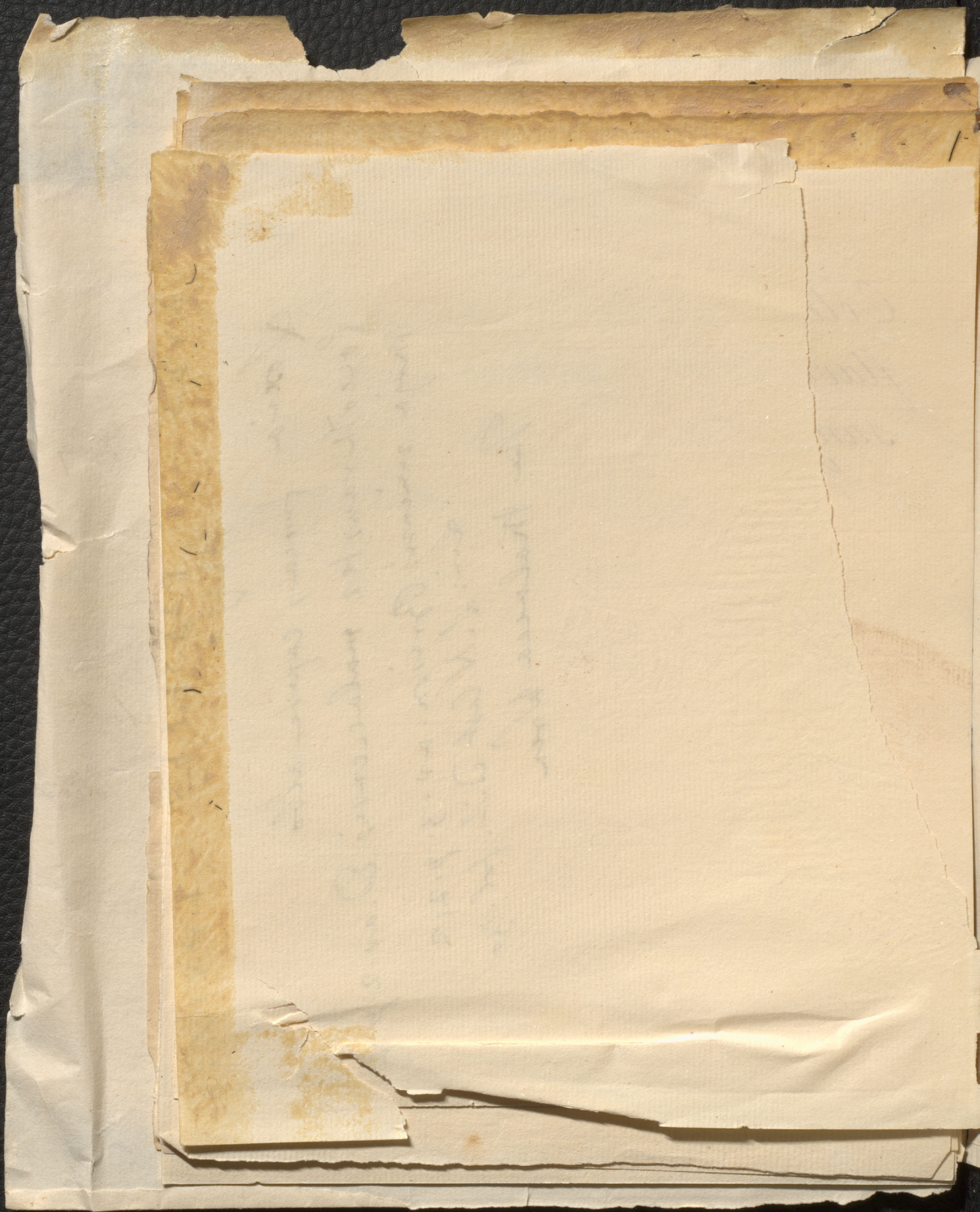
Coccothraustes malaccensis B. av. 2. p. 22

Moya minor; Brisson. av. 3. p. 212

Lin: J. N. Syst. Nat. vol. 301

The Malacca War

Pro.
sub
mar
Na
Lix



623
AVES, PASSERES. LOXIA.

AVES PASSERES LOXIA

622

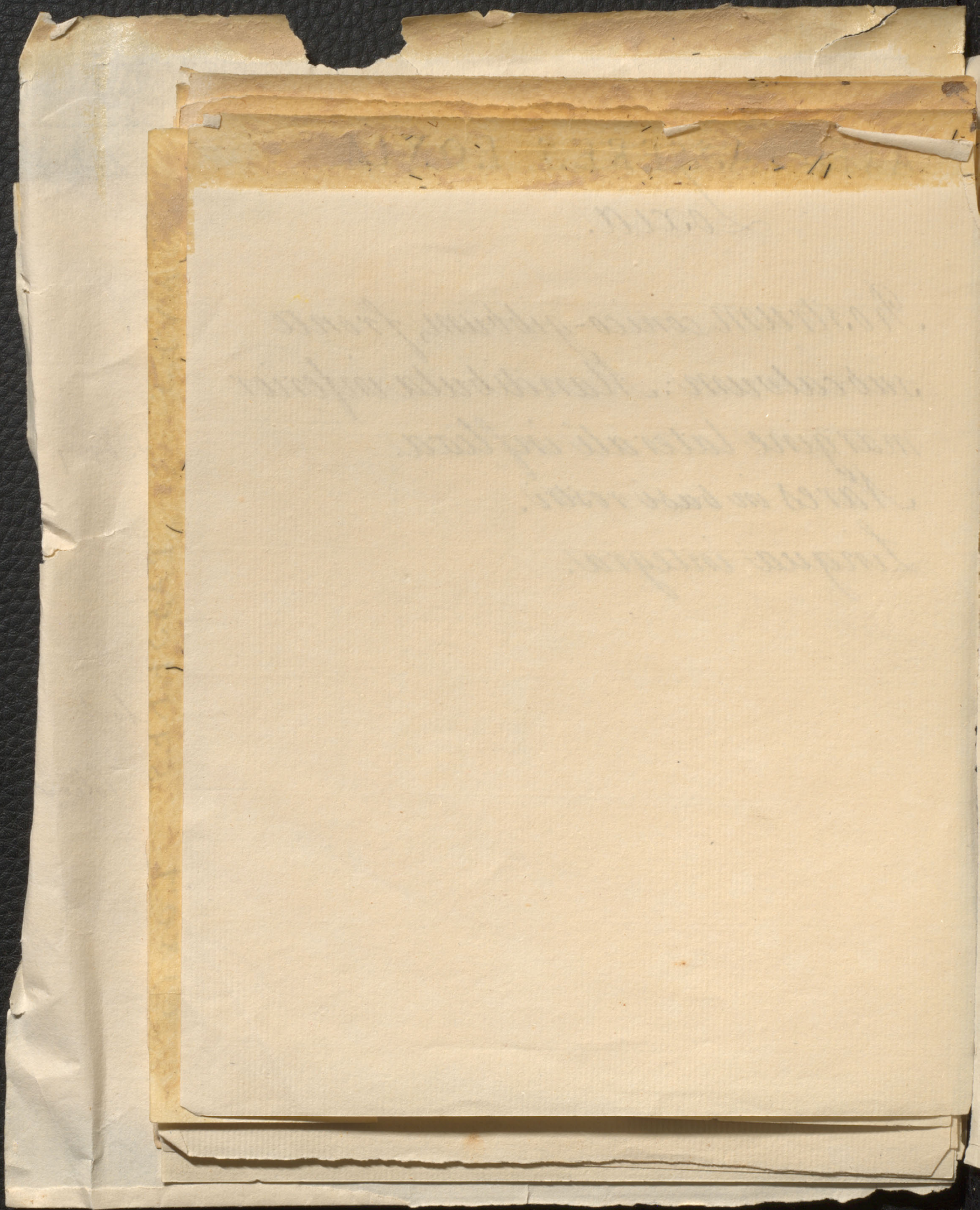
Loxia

612?

302
ne
us
gra
*Rostrum conico-gibbum, fronte
subcalvum. Mandibula inferior
margine laterali inflexa.*

Nares in basi rostri.

Lingua integra.



623
AVES. PASSERES. LOXIA.

~~C. MALACCA~~

622
102
ne
10
ra
14
AVES. PASSERES. LOXIA.

Oryzivora

14 *Loxia fusca* temporibus albis. rostro
rubro.

L. L. N. p. 173

Habitat in Asia e Ethiopia inter
oryzam.

The
Rice Bird

AYRES, PASSERES, COXIA

623
AVES. PASSERES. LOXIA.

16. MALACCA

16. *Loxia ferruginea*, capite et Abdomine
nigris, Rostro Ceruleo. *L. N. ed. nov p 302*

Habitat in China. Java. Malacca.

Dorsum, Ala, cauda ferruginio-ruffa Pectus
& Hypochondria alba; reliqua nigra

~~The Malacca gros beak.~~

