

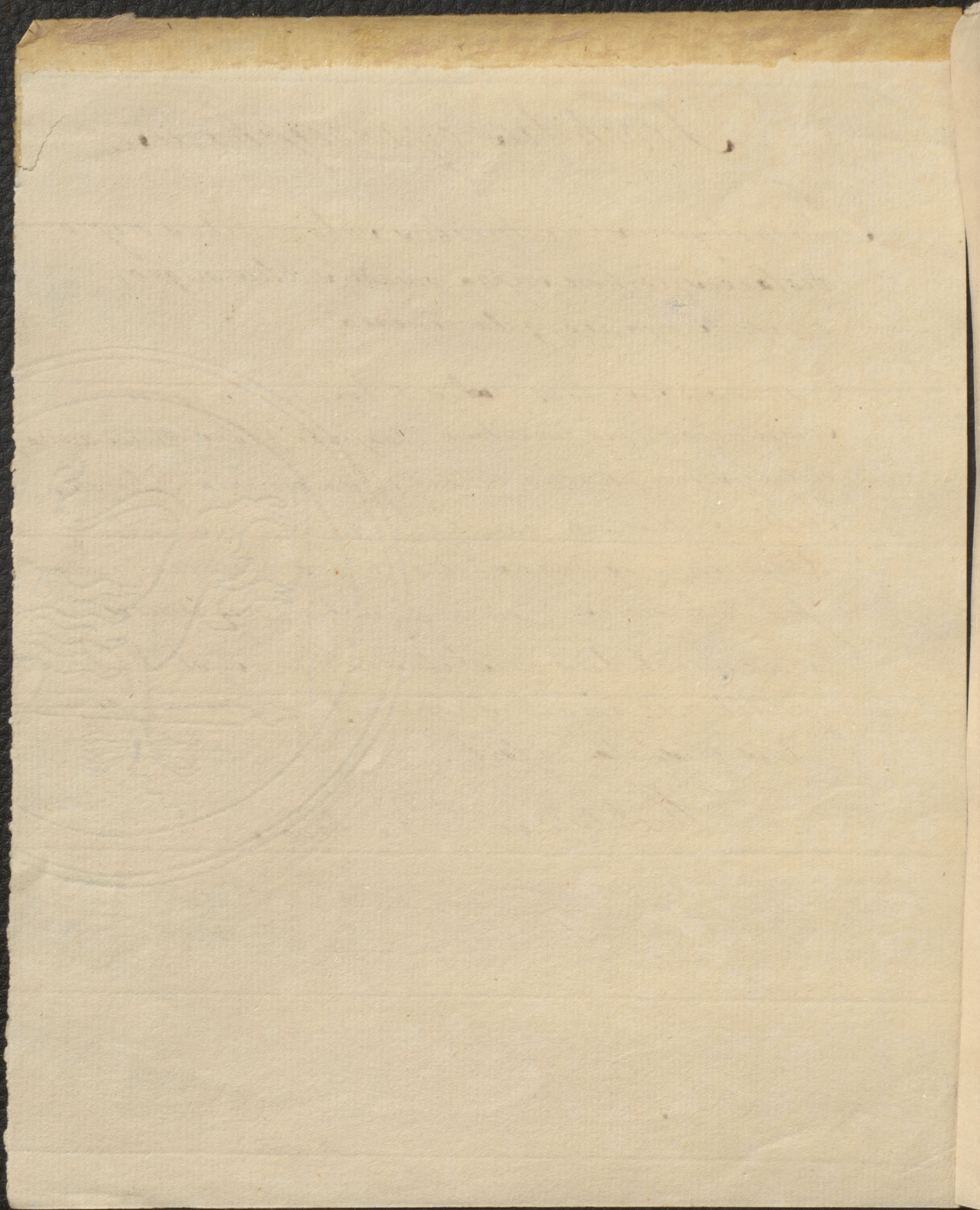
Trochilus cyanocephalus.

Brachyurus / *rectricibus subequalibus nigris*
violaceis, corpore supra viridi sublevis nigro,
occipite cyaneo, gula cinerea.

Emisoribus, hiuncialis. Rostrum nigrum,
semiunciale, vix curvatum. Capitis frons viridi-aurea,
nitidissima, nucha cyanea, gula cinerea. Dorsum,
Tectrices Alarum caudaeque aures viriscentia
Abdomen nigricans. Ala nigra violacea, cauda
paulo breviores. Cauda aequalis, nigro-violacea.

Forse *Trochilus cristatus* Linn: *Syst. Nat.*
 p. 121. n. 17. omnibus convenit, modo nostra
avis cristata esset.

Habitat in Barbadoes.



708

Trochilus subulatus.

T. brachyurus, rectirostris, rectricibus aequalibus
nigris, corpore supra viridi-aureo, subter albedo,
alio nigro.

Parvus, Quas cum dimidia unciis longus ab
apice rostri ad apicem cauda. Rostrum nigrum,
rectum, subulatum, sex quatuor lineas longum.
Totus supra e viridi aureus, subter a gula ad
caudam albicans, plumis virescentibus hinc
inde sub abdomine sparsis. Cauda aequalis,
nigra, subter parum nitens. Ala nigricans
longitudine cauda.

Habitat in Jamaica.

.....

.....

.....

.....

.....

.....

.....

.....

.....

.....

.....

.....

.....

.....

.....

.....

Trochilus holosericeus

709

Trachyrus rectricibus aequalibus nigro-violaceis
corpore viridi-aureo, abdomine nigricante, antice
subcyaneis, remigibus nigris.

Linn. Syst. Nat. p. 120. 9.

Valde affinis *Trochilo Auriflua* L. L. N. p. 120. 7.
sed differt abdomine antice & postice subviolaceo.
E majoribus hujus generis, ab apice rostri ad
apicem cauda uncias quatuor cum dimidia
longus. Rostrum nigrum, parum incursum,
unciale. Caput, Collum, Gula, Dorsum &
Tectrices alarum aures viridia nitentia.

Abdomen antice & postice viridi-cyaneum,
nitens, medio nigricans. Cauda aequalis,
nigro-violacea, corpore brevior. *Alae* nigricantes,
cauda paulo longiores.

Habitat in Barbadoes.

[Faint, illegible handwriting, likely bleed-through from the reverse side of the page.]

*Molosericeus**T. curvirostris rectricibus aequalibus**supra nigris, corpore supra viridi,**pectore caeruleo, abdomine nigro**L. S. N. p. 120**Habitat in America*

Philadelphia

3.

... ..

... ..

...

... ..

710

Trochilus nectarivagus

T. (brachyurus) rectricibus nigroviolaceis, subaequalibus, inferioribus apice albis; corpore supra virescente subtus albido, rostro longitudine capitis.

Et minoribus, tres uncias longus. Rostrium nigrum, semiunciale, apice paulo incurvum. Tarsus supra virescens, nitens, subtus a gula ad caudam e griseo albidus. Pter: Omnes pluma albida basi nigricant. Ala nigro-fusca cauda paulo breviores. Cauda subaequalis supra viridi-subviolacea, subtus nigro-violacea, rectricibus duabus intermediis immaculatis, inferioribus omnibus apice albidis, pauloque brevioribus.

Trochilo Tomineoni Linnaei salte affinis.

Habitat in Barbadoes.

[Faint, illegible handwriting at the top of the page]

[Extensive block of very faint, illegible handwriting covering the middle section of the page]

Trochilus Tomineo.

712

*T. (Brachyurus) rectricibus nigro-violaceis inferio-
ribus apice albidis, corpore supra viridi-aureo,
subtus albido rostro capite longiore.*

Linn: Syst: natura p. 121. 11.

Edwardsi Aves T. 38.

*Differ! a T. nectarivugo Moor: non modo rostro
capite longiore, sed etiam colore saturatius viridi-
aureo, quodque rectrices duas intermedia reli-
quis paulo breviores; Pennaeque capitibus in
haec arce imbricate, breves.*

*Habitat in America prope fluvium
Ohio.*

[Faint, illegible handwriting on aged, stained paper]

Trochilus fuscatus.

712

T. (brachyurus) reticibus aequalibus nigro-violaceis, corpore fusco-viridi nitenti, abdomine alioq. nigris.

Est majoribus hujus generis, quatuor & semiuuncialis.

Rostrum nigrum, unciatè, parum incurvum.

Caput supra, Collum, Dorsum, Tectrices alarum

& cauda e fusco-viridia, nitentia. Capitis latera

magis nitent, purpureo-anea. Gula nigro-

viridis. Alae nigricantes, cauda paulo longiores.

Cauda supra nigra-violacea, subtus e pur-

pureo-violacea. Apices rectricum margine

pallescunt.

Habitat in Jamaica.

Porphyry-tailed Parakeet

Torfiscatus.

*T. curvirostris, rectricibus lateralibus
longissimis, corpore viridi, pileo rectricibusq;
caeruleis.*

L. S. N. p. 120

Habitat in Jamaica

Josephus

Josephus

Josephus

Josephus

Josephus

Josephus

714

Hirundo

Rostrum, minimum, incurvum
subulatum, basi, depressum.

Rictus capite Amplius.

The Swallow

Thomson

Robertson, William, Esq.

London, Great Britain

Richardson, James

Edinburgh

Urbua

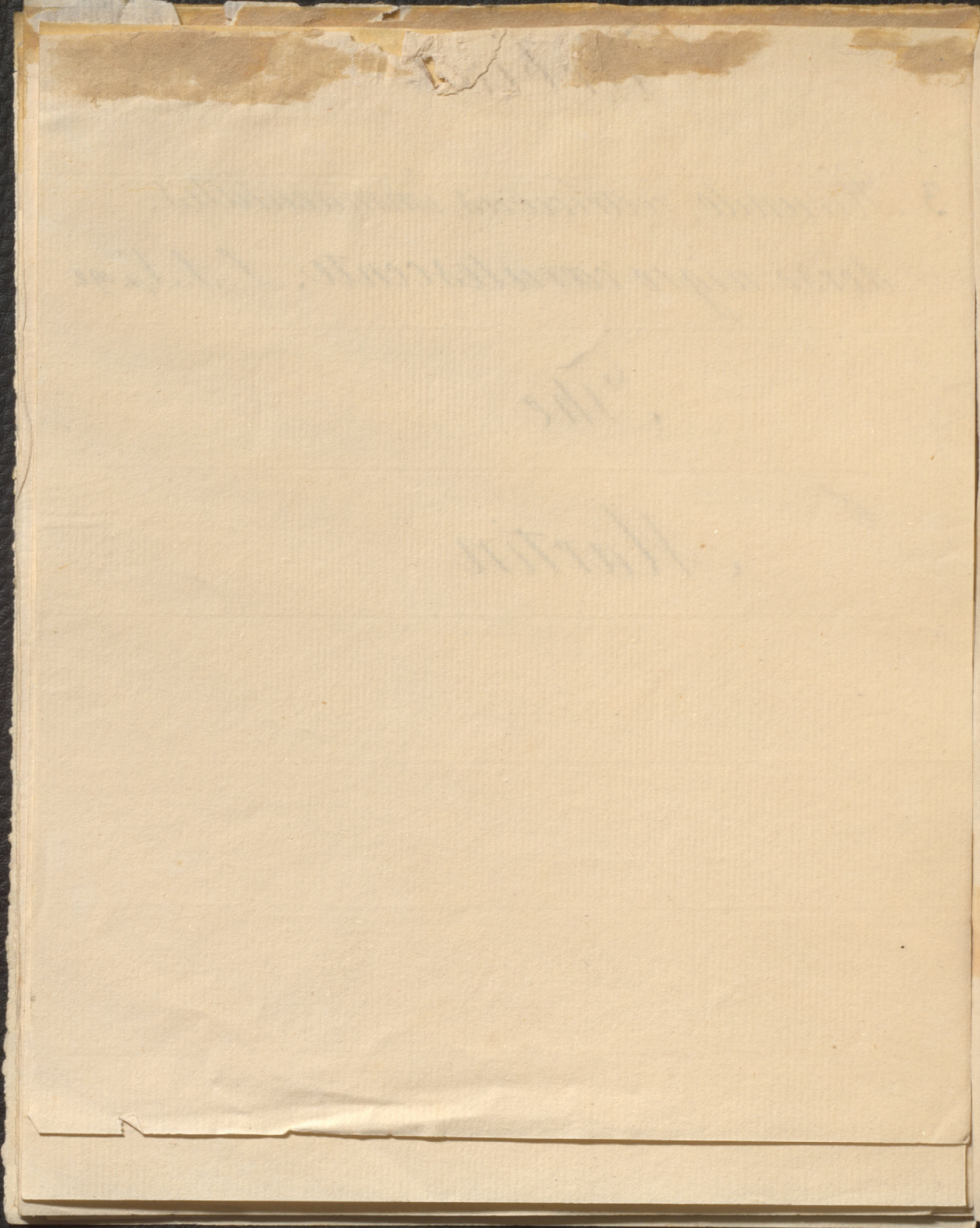
714

714

3 *Hirundo, rectricibus, immaculatis,*
dorso nigro caerulescente. L. S. N. p. 192

The

Martin

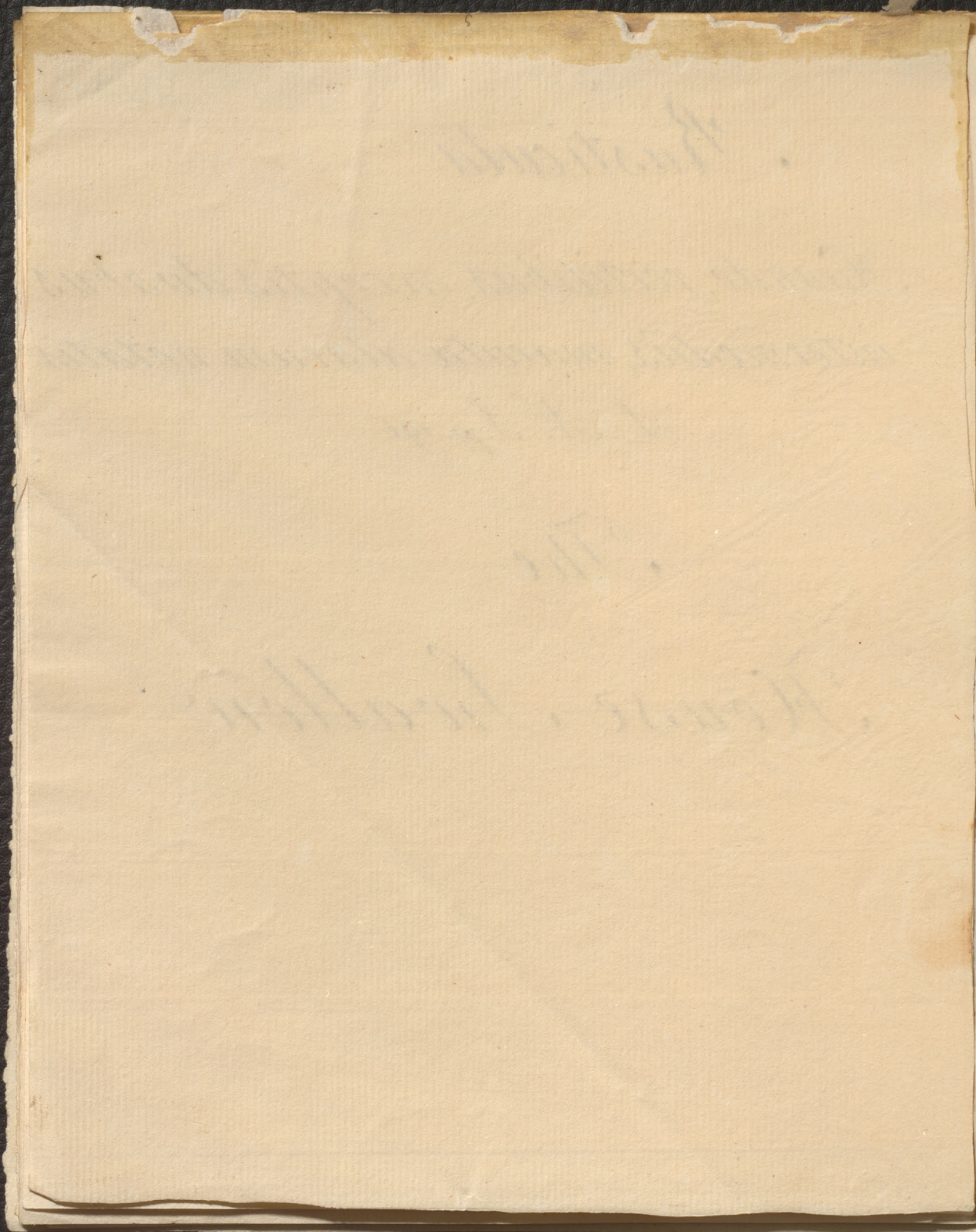


Rusticula

*Hirundo, recticibus, exceptis duabus
intermediis, macula alarum notatis*

L. N. S. p. 191

*The
House Swallow*



715

Aves. Passeres. Hirundo

12. Praticola.

Hirundo femoribus seminudis. L. S. N

last dit pp. 345

habitat ad litora Europae australioris

In Austria Pratis Apricis.

^{Descriptio}
media quasi inter Hirundes & Grallas.

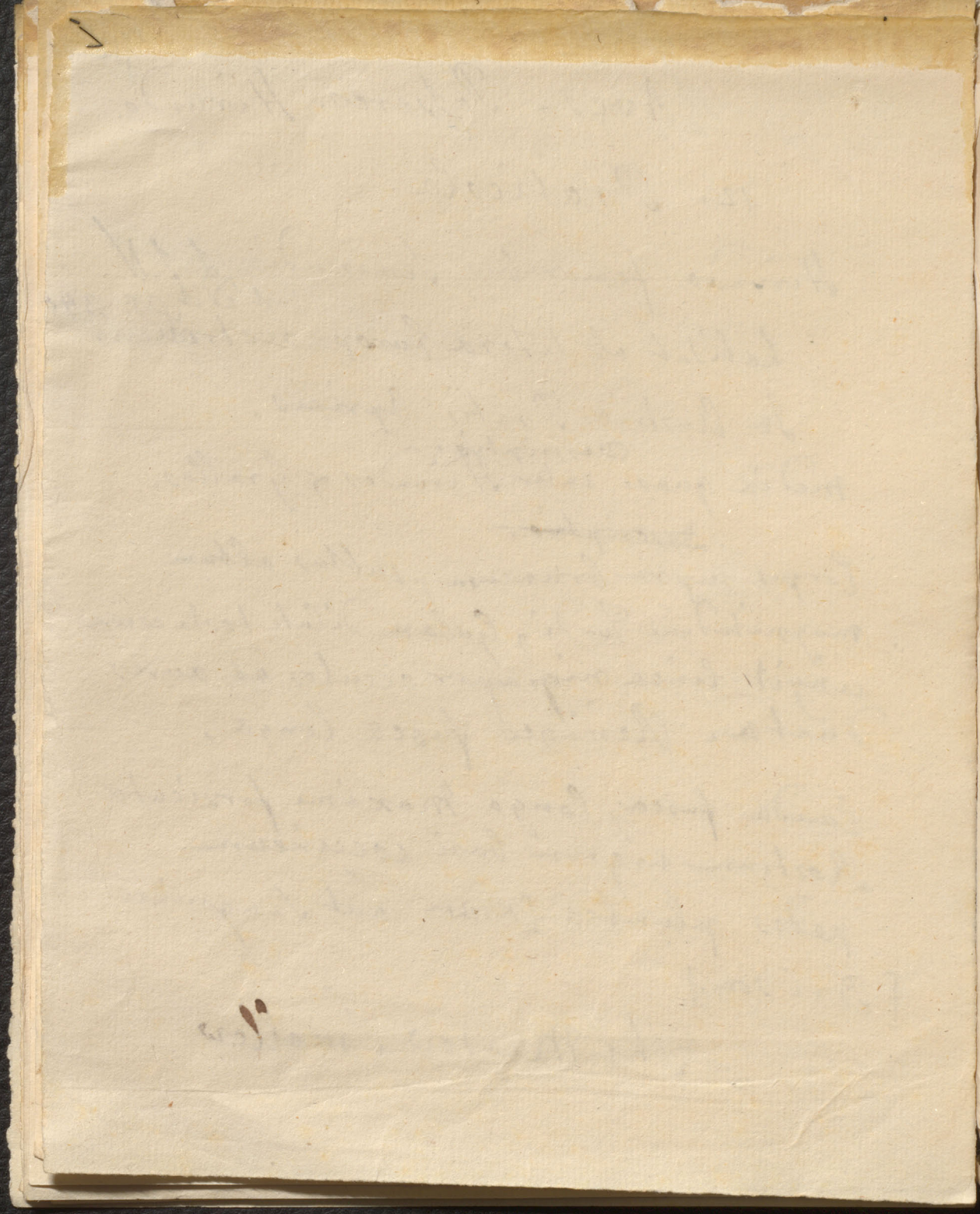
^{Descriptio}

Corpus supra bruneum, subtus album
magnitudine Tardi, Gularum dilute testaceum
cingit linea nigra per oculos ad aures
ducta. Remiges fuscae longae.

Cauda fusca, longa maxime forscata
Rostrum nigrum basi coccineum
pedes plumbei [Kram aut sanguinea

[Brisson.]

The Meadow Swallow



716

Caprimulgus Europaeus

Caprimulgus narium tubis obsoletis

L. J. N. p. 193

Habitat in Europa

The Goatsucker

Copyrighted Copy

Copyrighted Copy

L. J. [unclear]

Copyrighted Copy

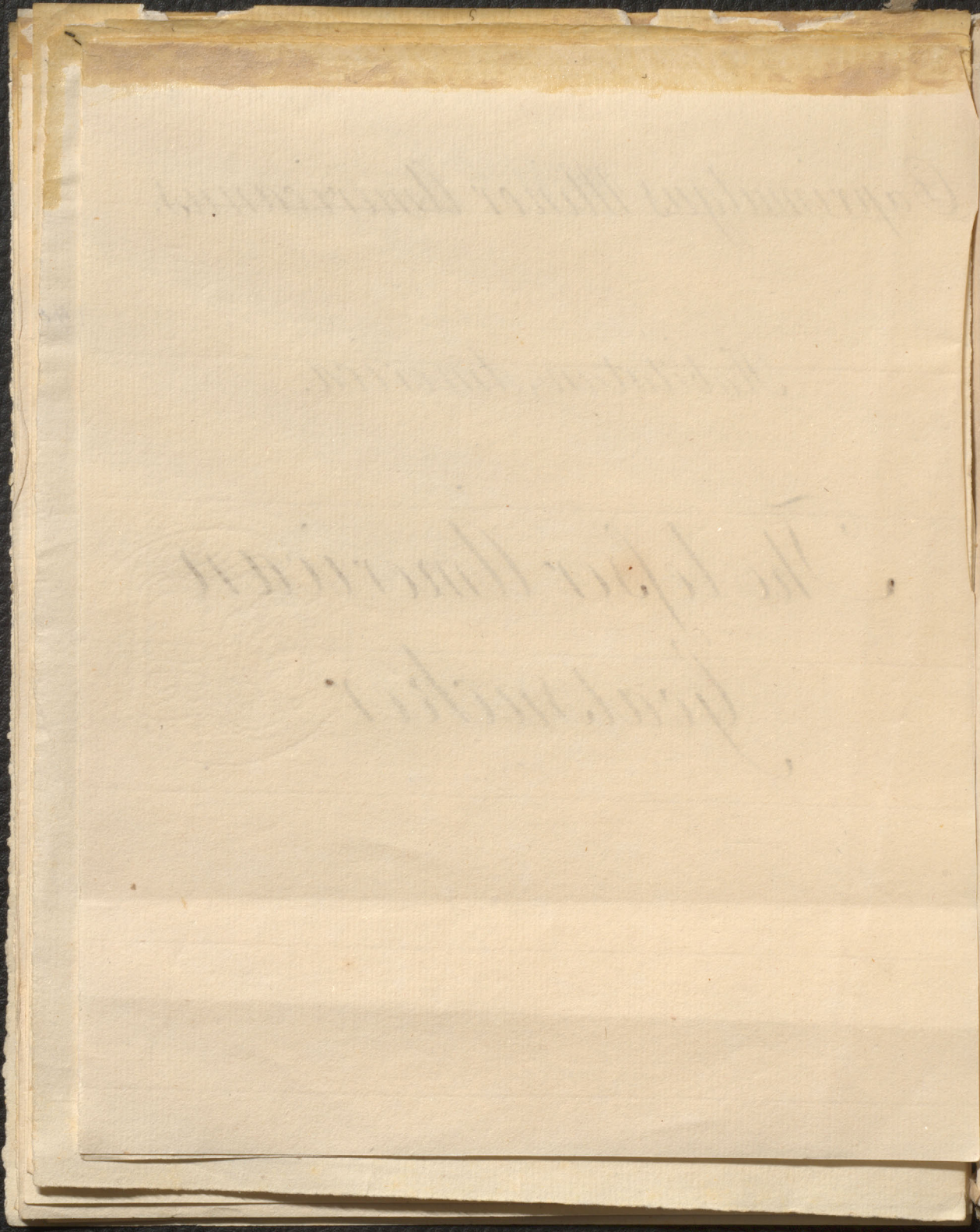
Copyrighted Copy

717

Caprimulgus Minor Americanus.

Habitat in America.

*The lesser American
Goatsucker*

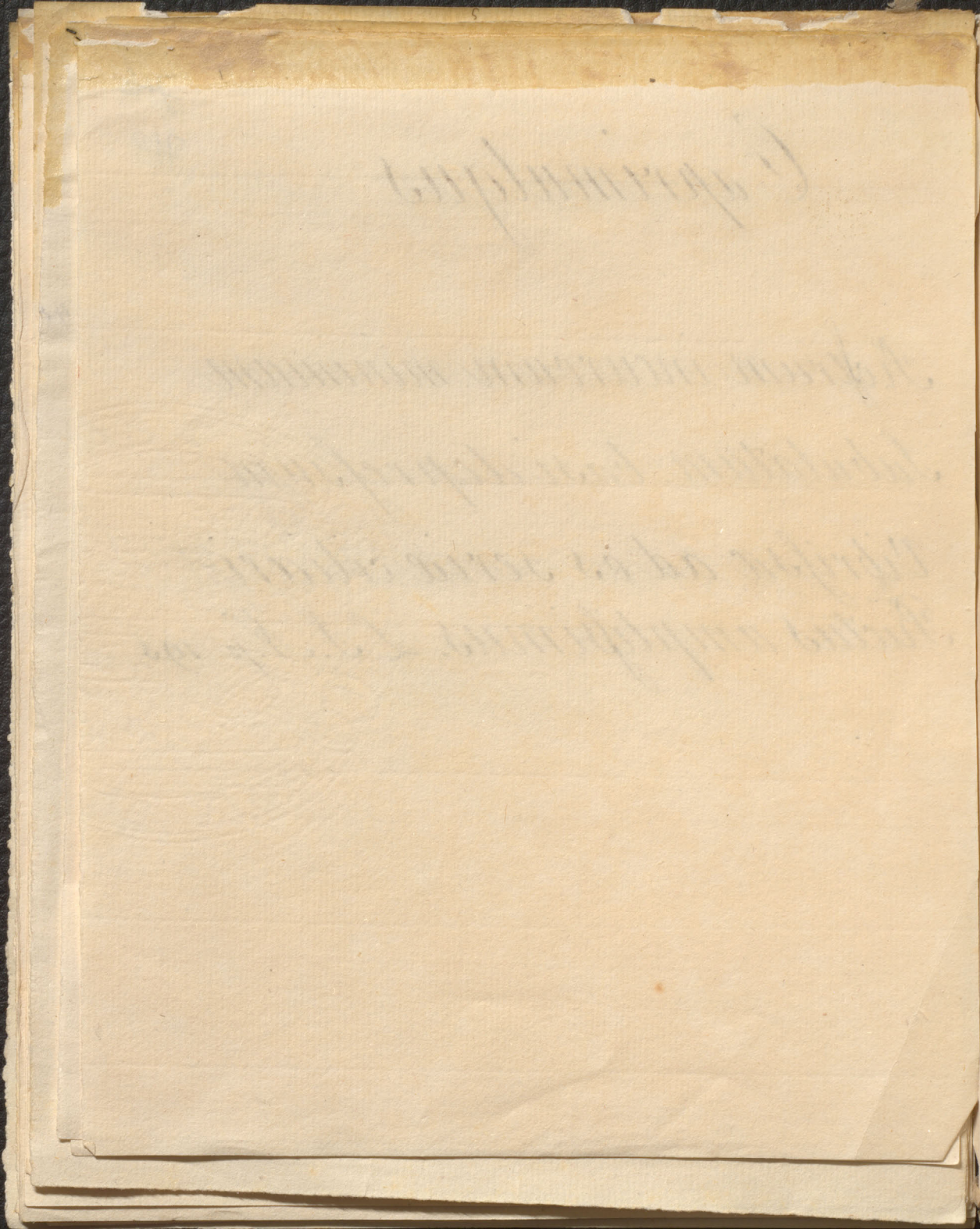


Caprimulgus

716

718

Rostrum incurvum, minimum
Subulatum, basi depresso
Vibrissæ ad os seriæ ciliari
Pictus amplissimus. L. S. N. p. 193



Colubris

719

I. rectricibus nigris: litteralibus tribus

apice albus gula rubra. L.S.N. p 120

Habitatio America

1777

Received of the Treasurer of the

of the sum of

for

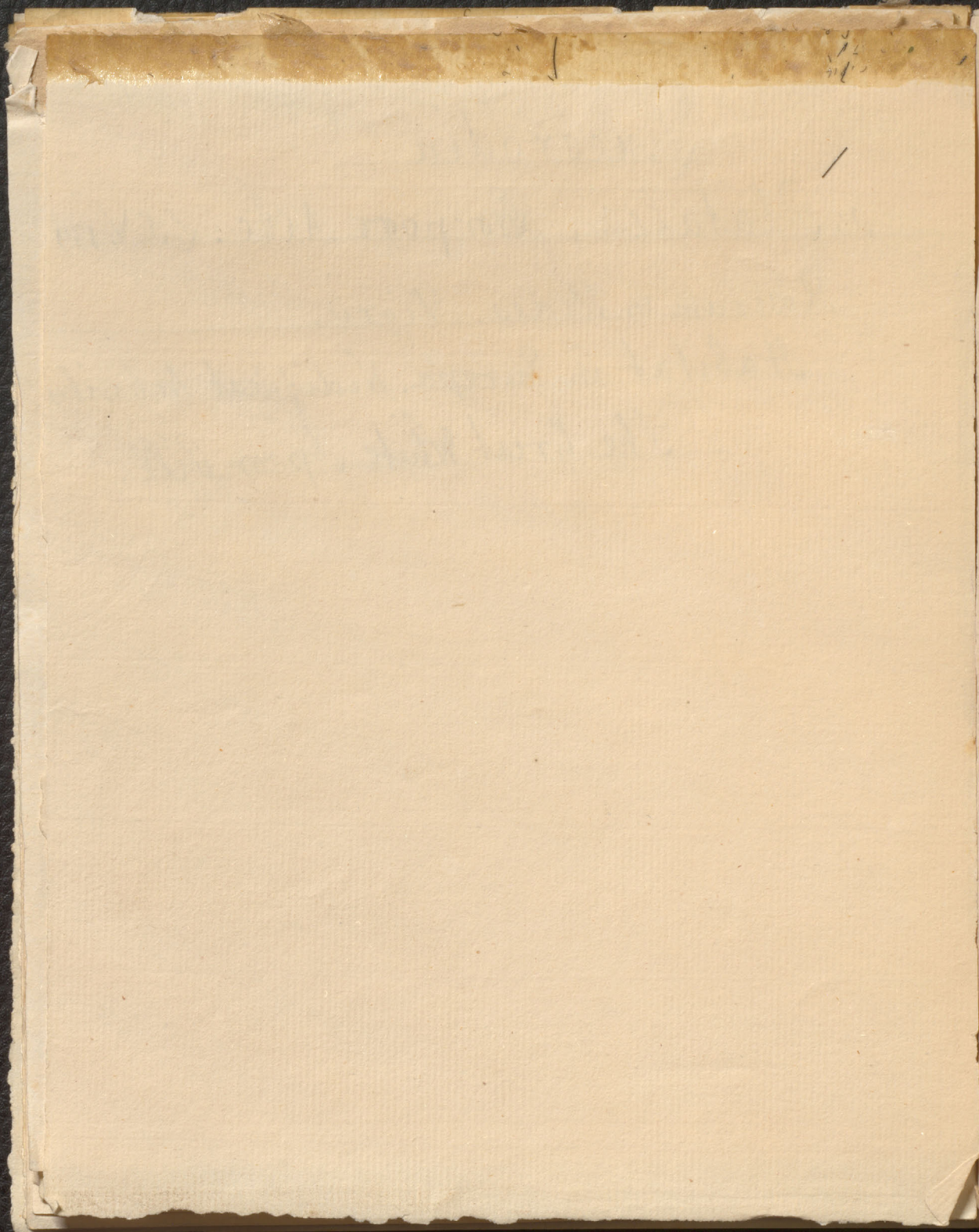
Leucorodia

1. Platalea, Corpore Albo. L.S.V. 139

Rostrum & Pedes. Nigri.

Habitat in Europa. Nidificat Arboribus

The Great White Spoonbill.

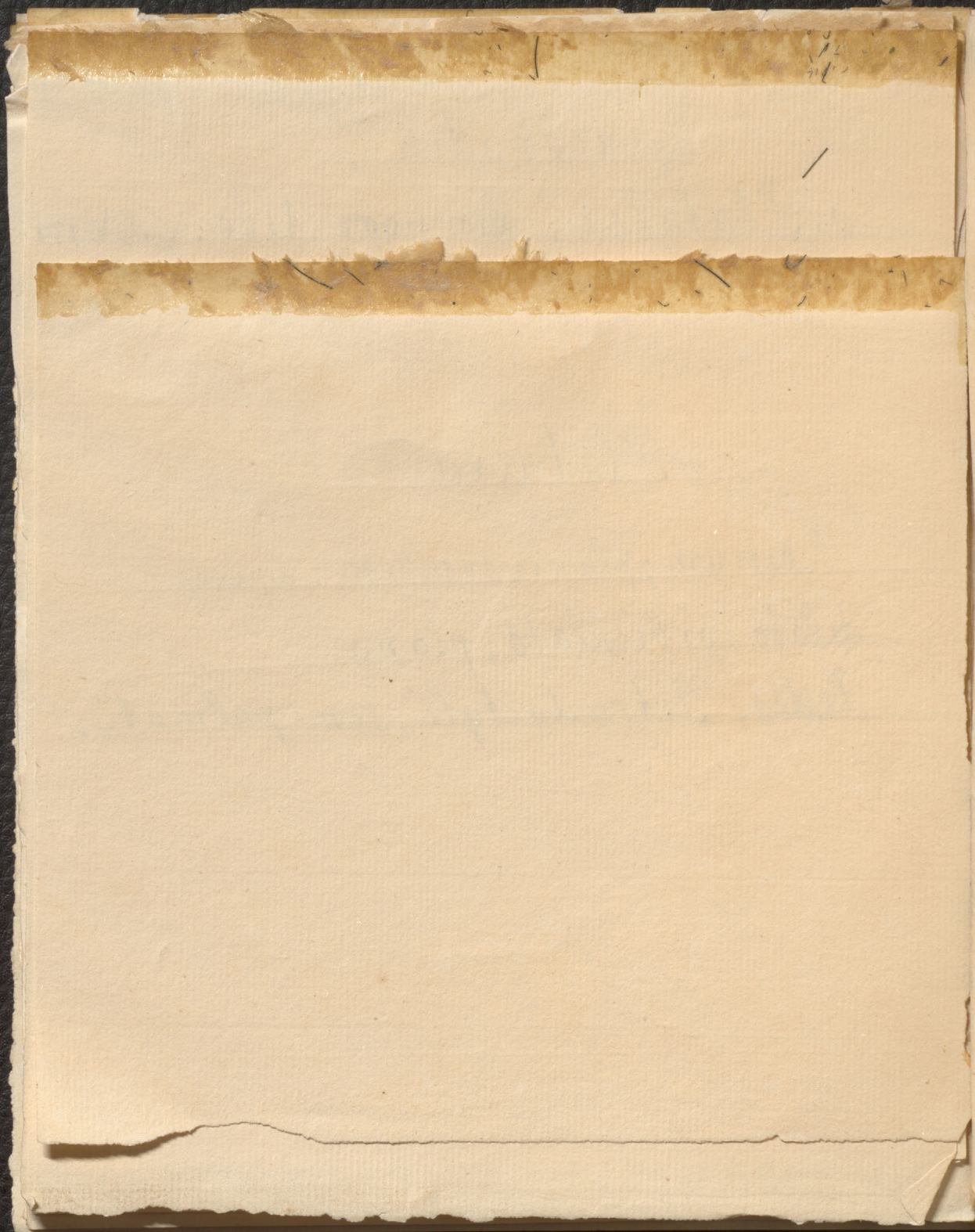


~~Paucimanus~~

Platalea

Rostrum; planiusculum: apice
dilato orbiculato, plano.

Pedes, Tetradactyli, semipalmati.



Pavonina.

Ardea crista setosa erecta,

*Temporibus palearibusq³ binis
nudis. L. S. N. p. 141.*

Grus balearica. Will. orn. 201.

habitat in Africa.

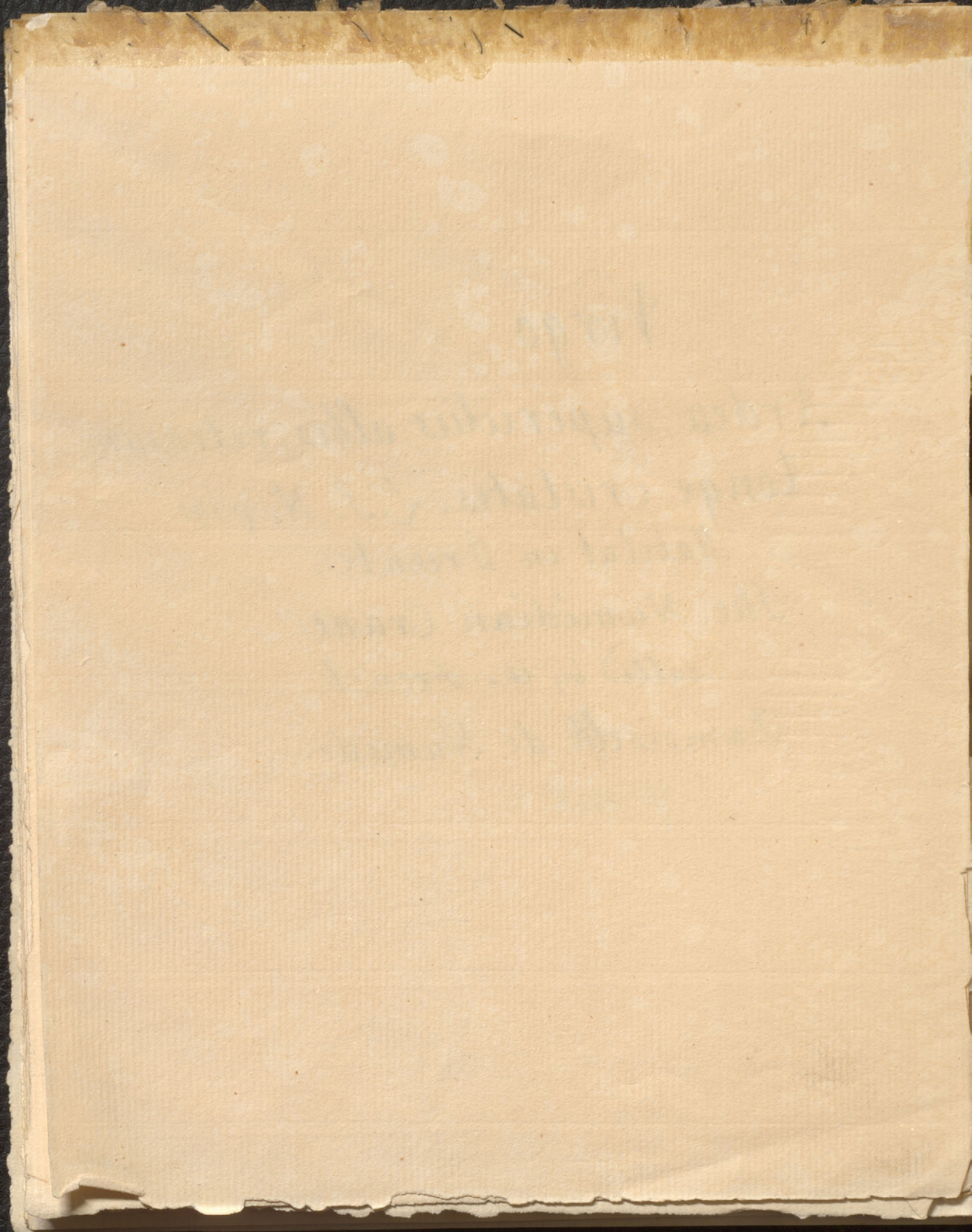
*The Balearick Crane
or Crown Bird.*

Savonlinna

Virgo

Ardea, superciliis albis, retrosum
longe cristatis. L. S. N. p 141
Habitat in Oriente.

The Numidian Crane.
called by the French
Damoiselle de Numide.



Ardea

Antigone

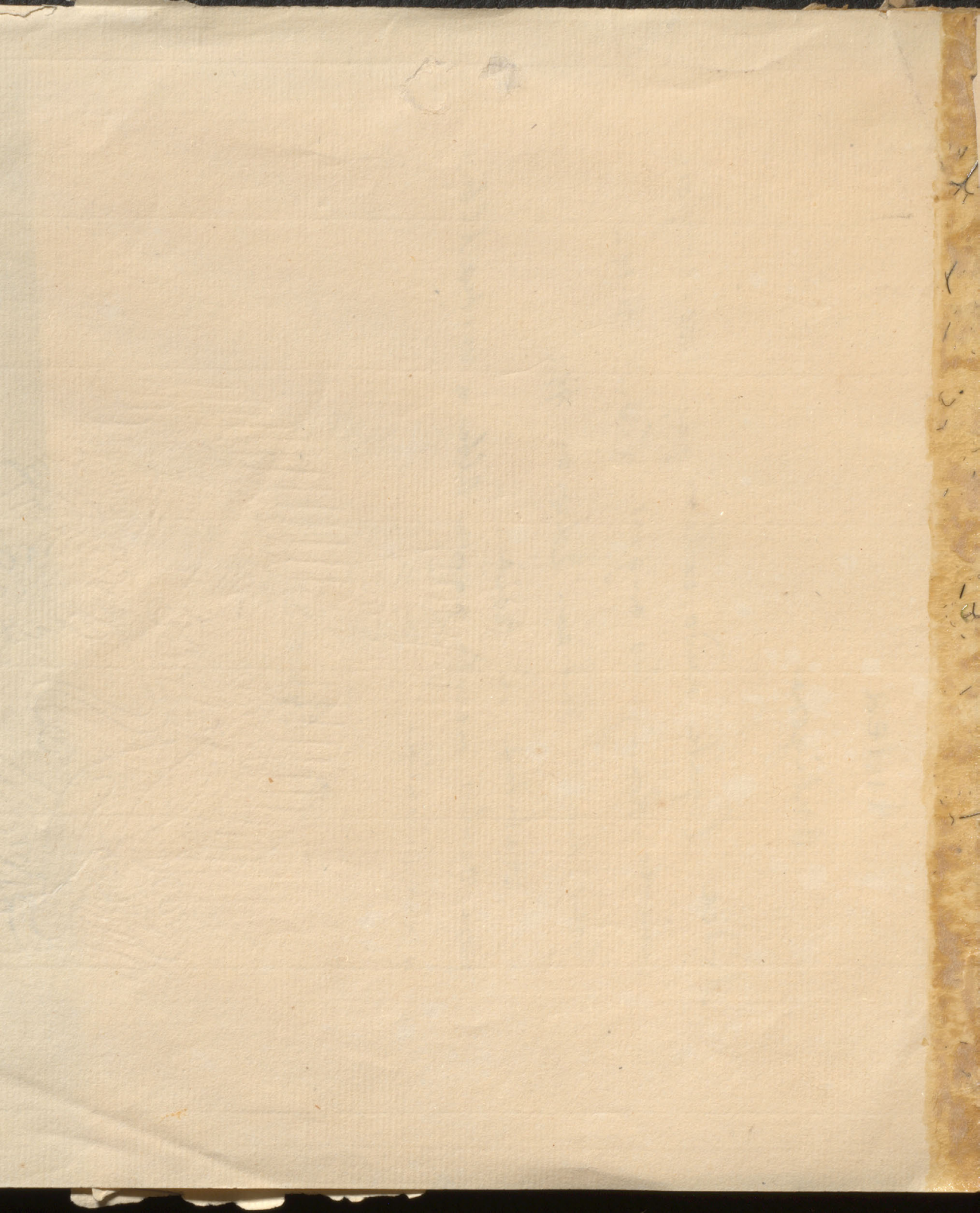
Ardea. Capite nudo. collari papilloso, corpore
cinereo; Remigibus nigris. L.S.N. p. 142

Grus major Indica. Edw. av. 45.

Habitat in Asia.

per oculos macula parva alba & vertice albus
* * * Ciconia

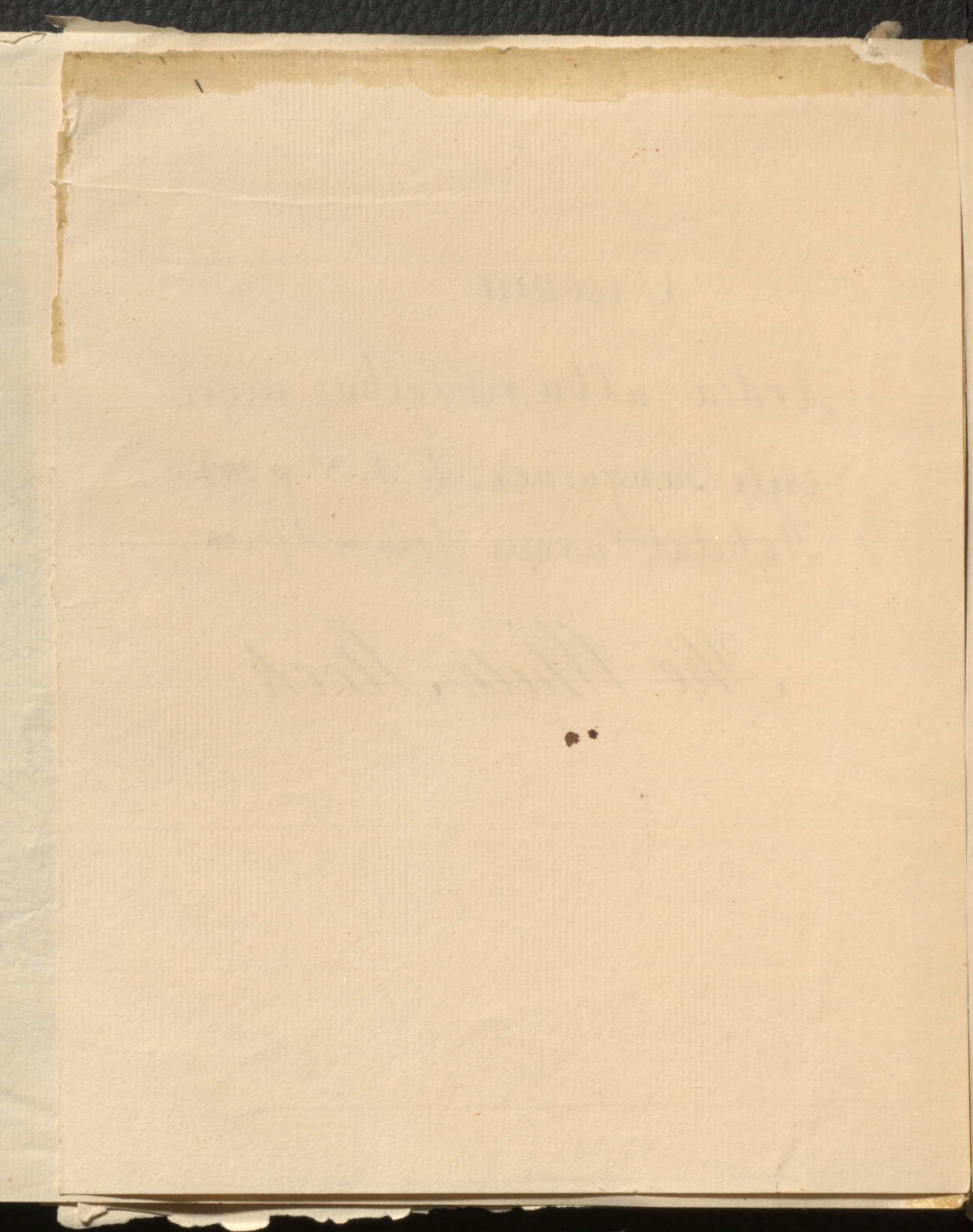
The Cygnus.



Ciconia

Ardea alba, remigibus nigris
cute sanguinea. L. S. N. p. 142.
Habitat, in Europa Asia & Africa.

The White Stock



Nycticorax

Ardea crista occipitalis tripenni
dependente, dorso nigro, abdomine
flavescente. L. S. N. p 142

The Night Raven.

Cinerea

*Ardea, occipite crista pendula
 dorso caerulescente, subtus albida,
 pectore maculis oblongis nigris.*

*Habitat in Europa; L.S.N.p. 143
 significant in aboribus plures simul.*

The

Common Ash Coloured

Heron.

1840

Dear Mother

I received your kind letter

and was glad to hear from you

and hope you are all well

I am well at present

Yours

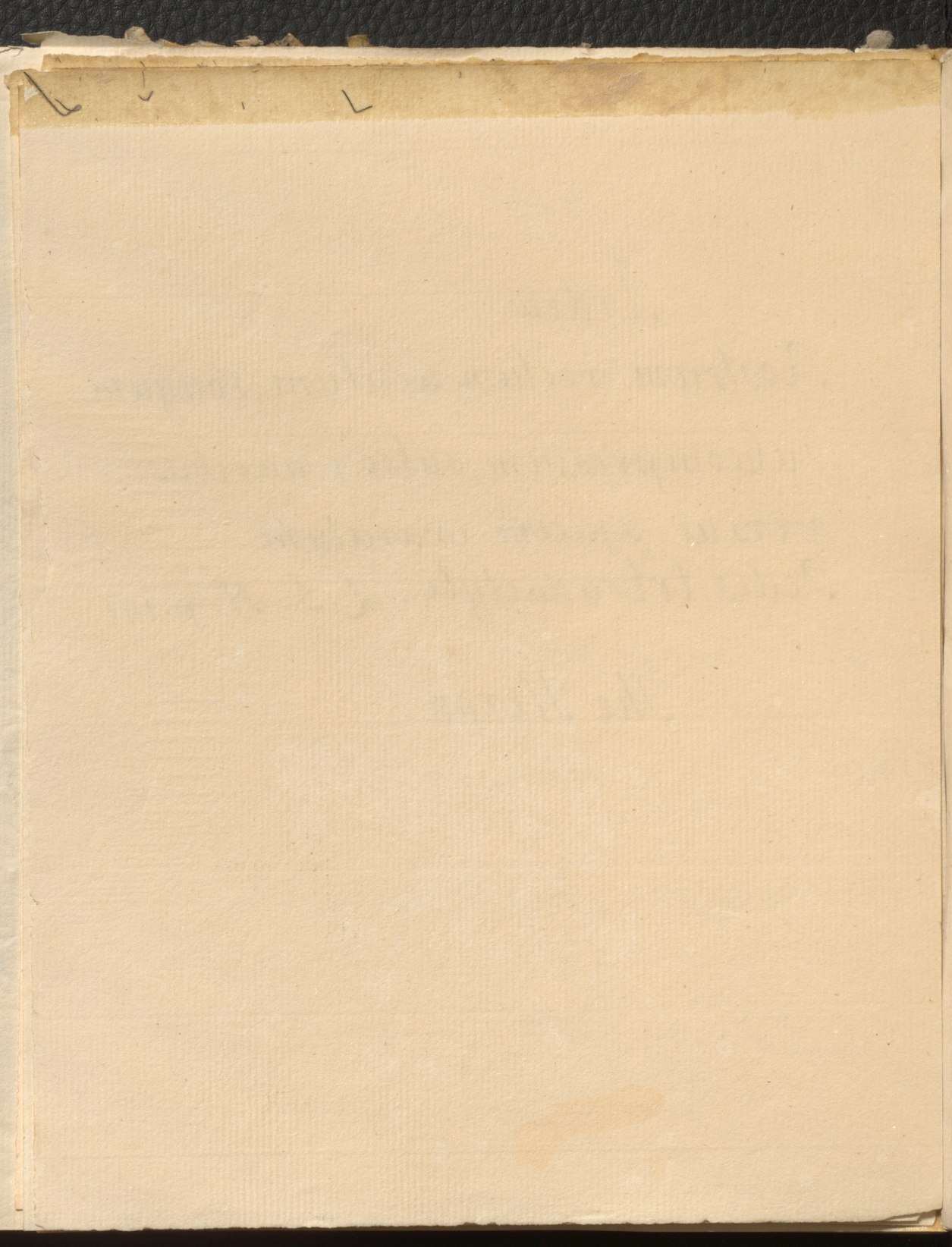
John

1840

Ardea

Rostrum rectum acutum, longum
subcompressum, sulco e naribus
versus apicem exaratum.
Pedes tetradactyli. L. S. N. p. 141.

The Heron.



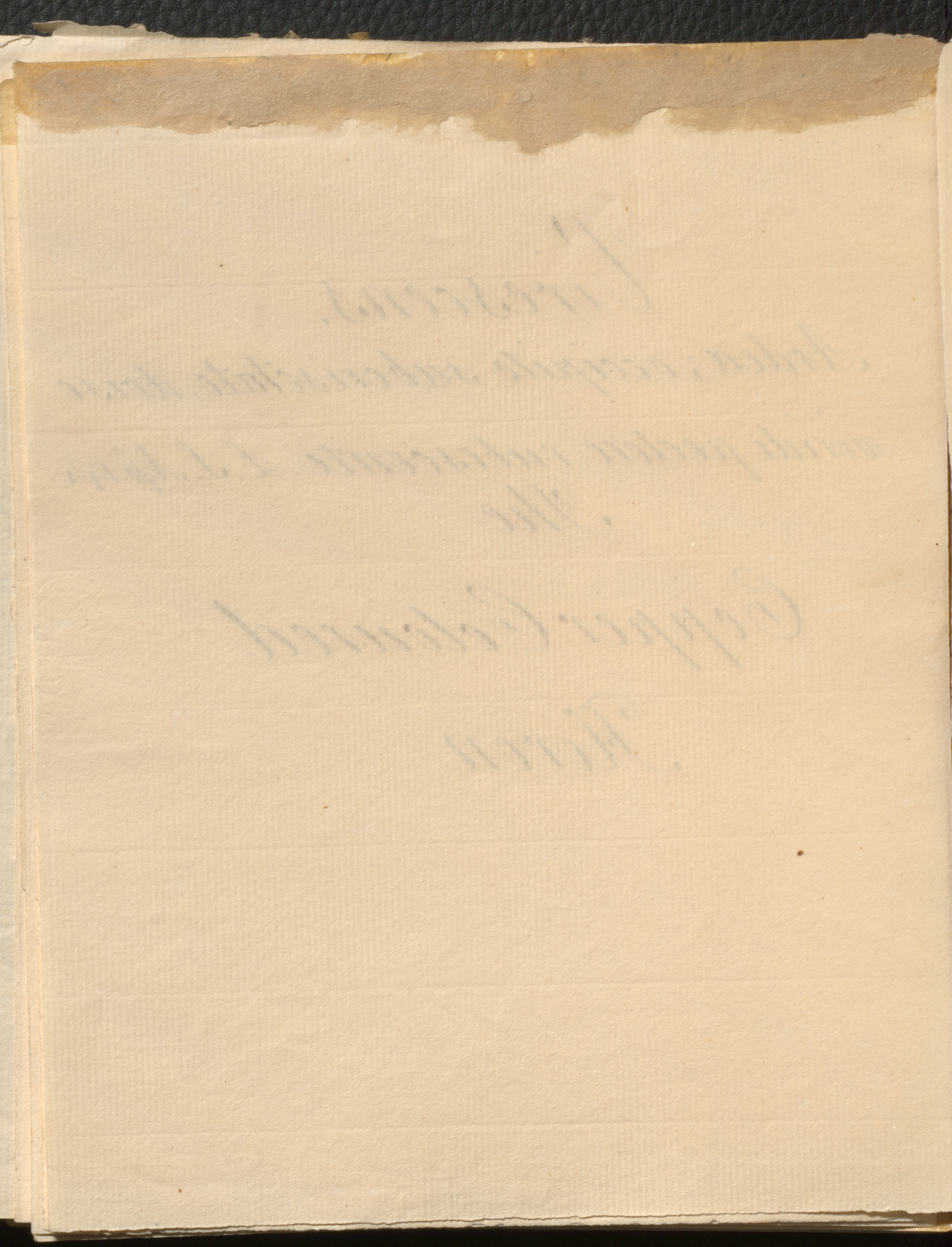
Virescens.

*Ardea; occipite subcristato, dorso
viridi pectore rubescente. L. S. N. p. 144*

The

Copper Coloured

Heron



Ardea virescens.

Linn: Syst: Natur: 144. 15.

Ardea Granadilla differt a *caroliniana* quod
Collum canescat et quod remiges a pice
alba. An sexus Varietas?

John ...

...

...

Brasiliensis
Ardea Brasiliensis Minima
Will. orn. p. 205.

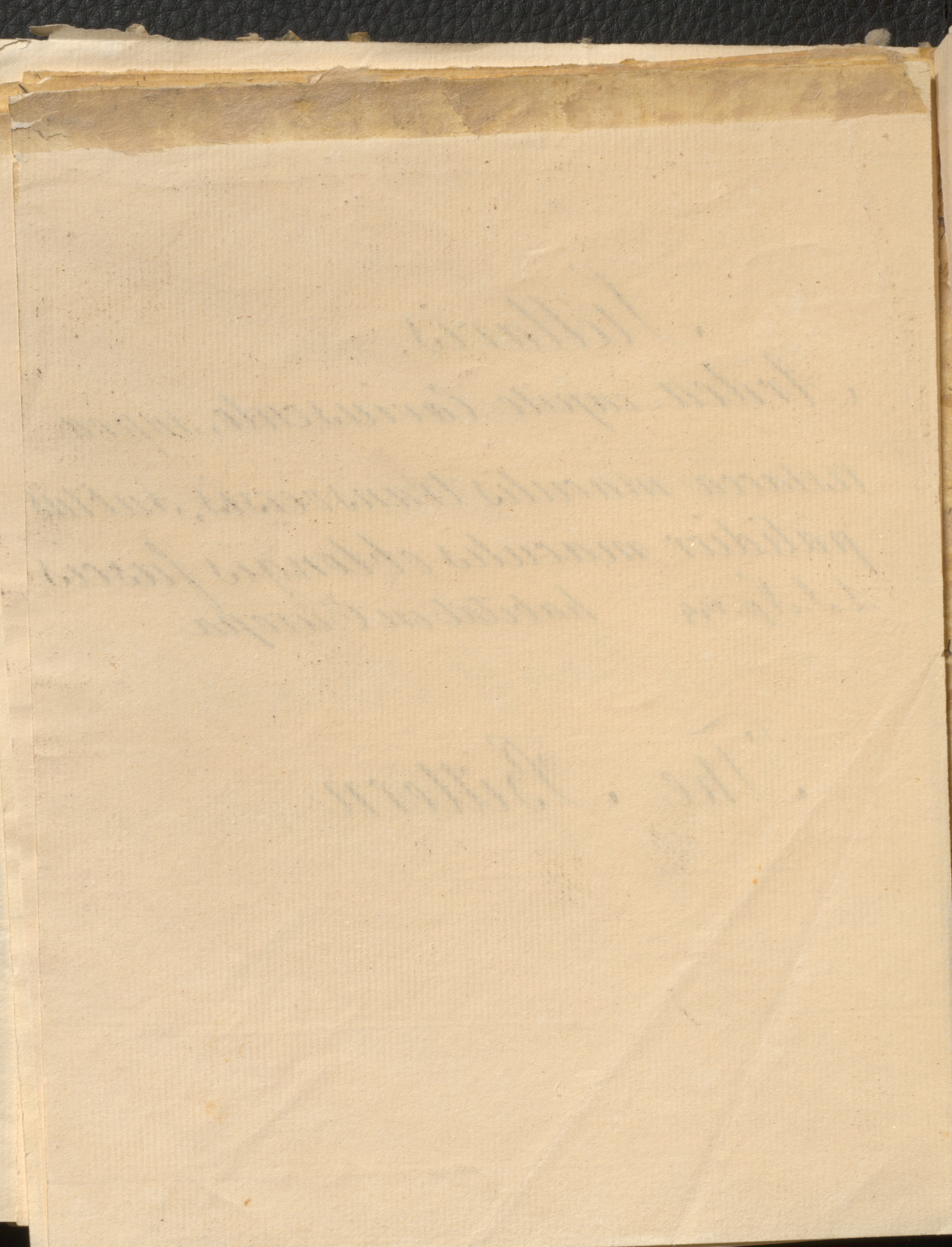
The Small Brazilian
Heron of Marggrave.

[Faint, illegible handwriting, likely bleed-through from the reverse side of the page.]

Stellaris.

*Ardea. capite leviusculo, supra
testacea maculis transversis, subtus
pallidior maculis oblongis fuscis*
L.S. N.p. 144 *habitat in Europa*

The Bittern



736 744
Ardea fasciata.

*A. capite leviusculo, supra ferrugineo maculis transver-
sis nigris, subtus nigra maculis transversis albis.*

*Ardea stellaris paulo minor. Caput, Collum, Dorsum &
Tectrices Alarum ferrugineo maculis seu fasciis
transversalibus nigris. Obs: Collum subtus dilutius
coloratum ut Caput supra saturatius, non autem
nigricans ut in Ardea stellaris. Abdominis latera
& Ala subtus genuaque extus albida fasciis trans-
versalibus nigris. Obs: Secundum medium Abdominis
Penna longiores ex ferrugineo albida a collo ad cau-
dam currunt, ubi etiam genua sequunt. Genua semi-
nuda inferne ut & Tibia fusca. Ala nigricantes:
Remigibus 22 apice albidis, et ad marginem exter-
nem maculis tribus l. quatuor parvis subtriangula-
bus ex ferrugineo albidis notata. Rostrum capite
paulo longius, pallide flavescens. Tarsus lineares, obli-*

*Obs: Penna capitis in mare subreflexa, penaeque
pectoris longiores quam in femina.*

Habitat in Insulis Granadis.

Aves. Gralla
Tantalus

744

Ardea

739

pectore striato. Vertice

Crista nigra ^{compe} ~~partes~~
^{superiore parte}

~~Dorso~~ Fusco inferiore

Striato femoribus luteis
pedibus nigris.

ventricibus nigris.

magnitudinis Columbae

rostris
pedibus Viridis =

41. 2. edit.

coccineis. Bris:
t. 1. 2.

. av. 1 p. 84. t. 84.

Stu.

Handwritten text, possibly a name or title, partially obscured by tape.

*Obs: Penna. capitis in mare subreflexo, pennaque
pectoris longi*

Habita

Faint, illegible handwritten text visible through the paper from the reverse side.

86
Aves. Grallae

744

Tantalus

Ruber

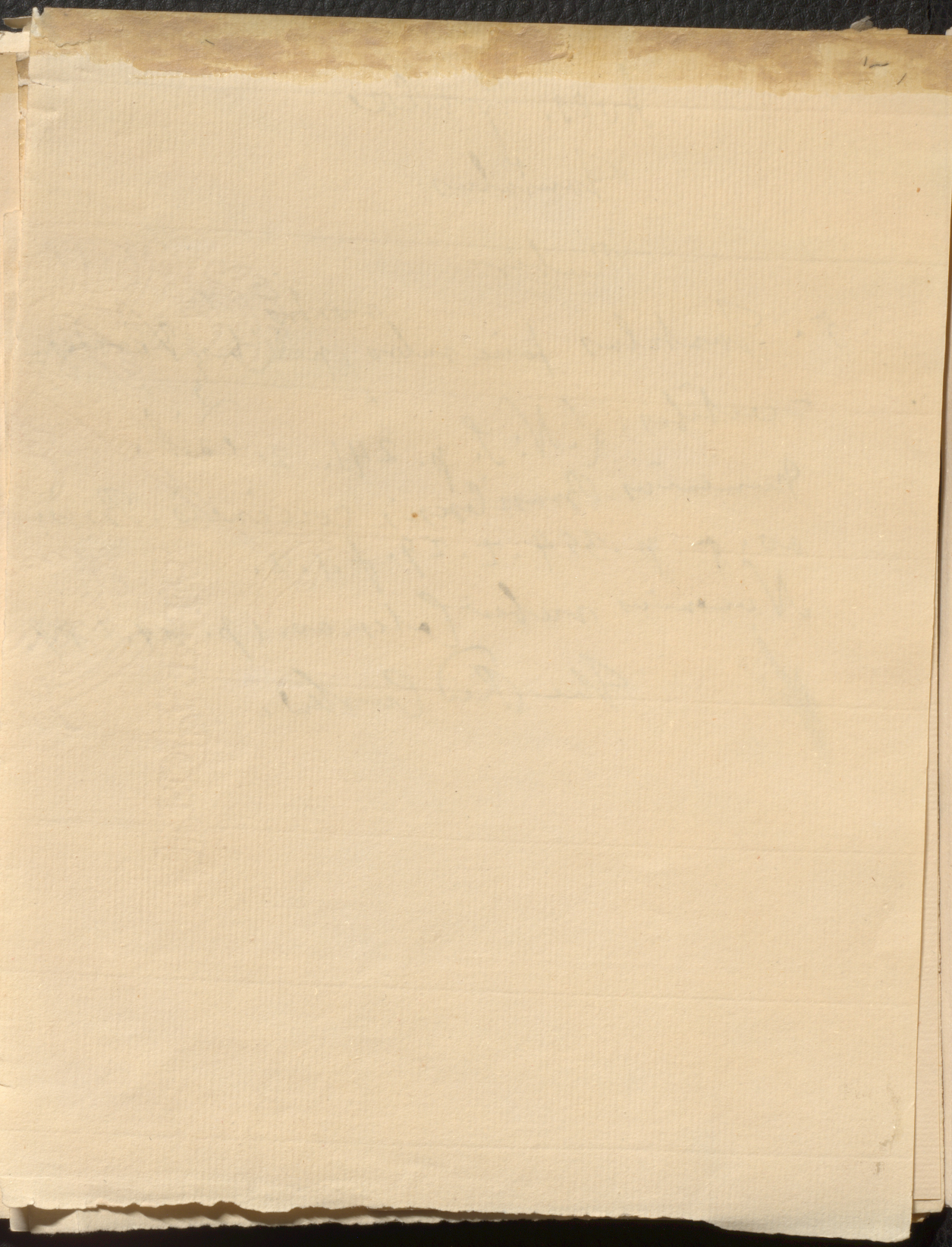
5. Tantalus facie rubro, ^{rostris} pedibus, Viridis =

= certibus. L. N. S. p. 241. 2. col.

Nomenclus Brancipeni; coccineis. Bris:
av. 5. p. 354. t. 29. f. 1. 2.

Nomenclus ruber Latr. av. 1 p. 84. t. 84.

The Red Curlew.



72
Ispida.

1. *Alcedo. brachyura, supra caerulea,*

subtus fulva.

L. I. N. p. 115

Habitat ad maris littora in Europa

The Kingfisher.

Spindel

1. Hebe die Buchstaben, welche in dem

Wort stehen.

2. Hebe die Buchstaben, welche in dem

Wort stehen.

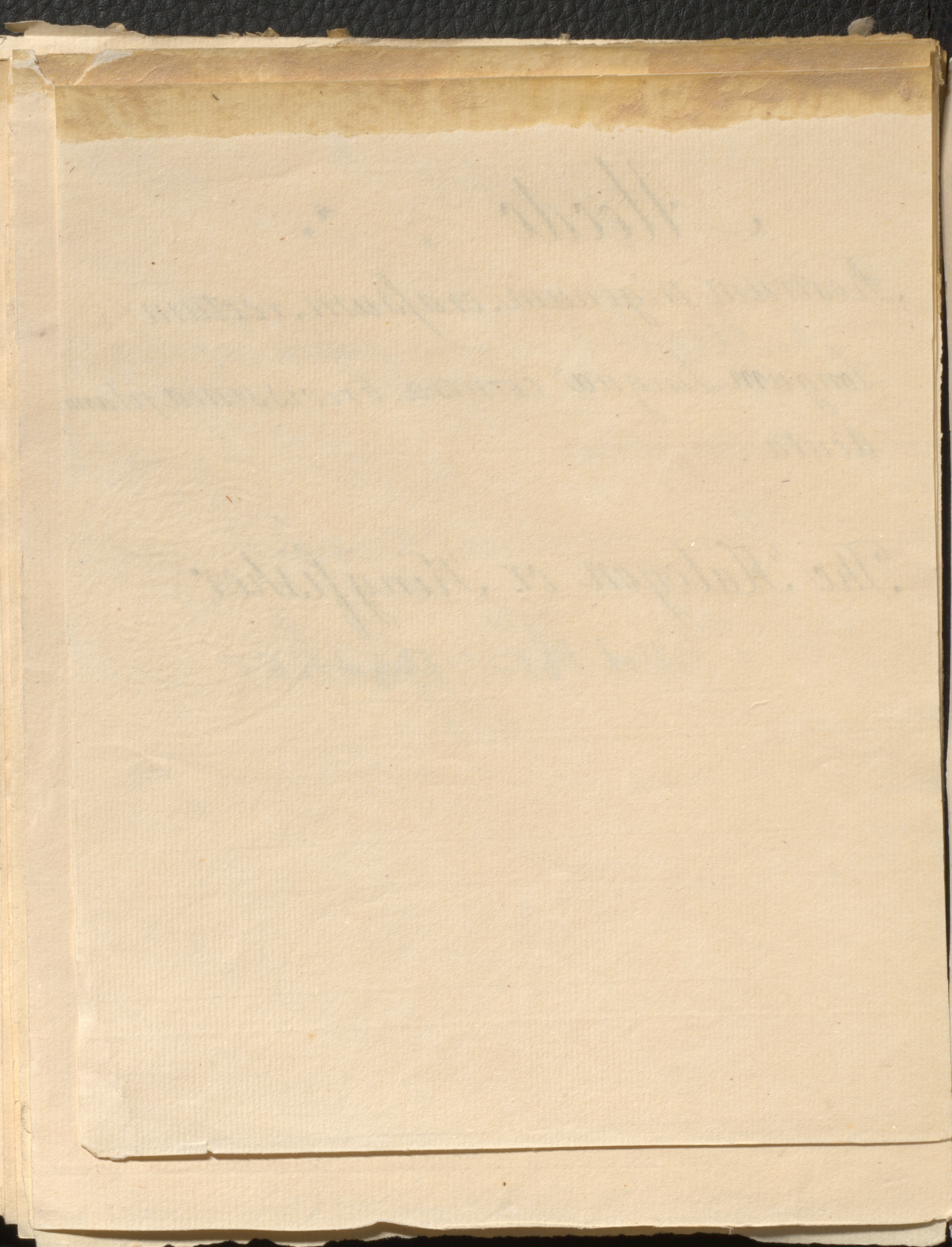
747
746
Alcedo

Rostrum trigonum, crassum, rectum

Longum Lingua cornosa, brevissima plana.
Acuta.

The Halcyon or Kingfisher

Vol 13 — Page 26



Smyrnensis

A. macroura ferruginea, alis cauda dorsoque

viridibus.

L. S. N. p. 116

Habitat in Africa et Asia

The Smyrna King-
fisher.

Handwritten text, likely bleed-through from the reverse side of the page.

Handwritten text, likely bleed-through from the reverse side of the page.

Handwritten text, likely bleed-through from the reverse side of the page.

Handwritten text, likely bleed-through from the reverse side of the page.

Handwritten text, likely bleed-through from the reverse side of the page.

Handwritten text, likely bleed-through from the reverse side of the page.