

Rudis

A. macroura fusca albido varia. L.S.N. p. 116

Habitat in Persia & Egypto.

The Persian Kingfisher

Vol 13

Page 29

1
Mittels

Das Manuscript ist nicht mehr zu lesen.

Die handschriftliche Notiz ist ebenfalls nicht mehr zu lesen.

Die handschriftliche Notiz ist ebenfalls nicht mehr zu lesen.

750

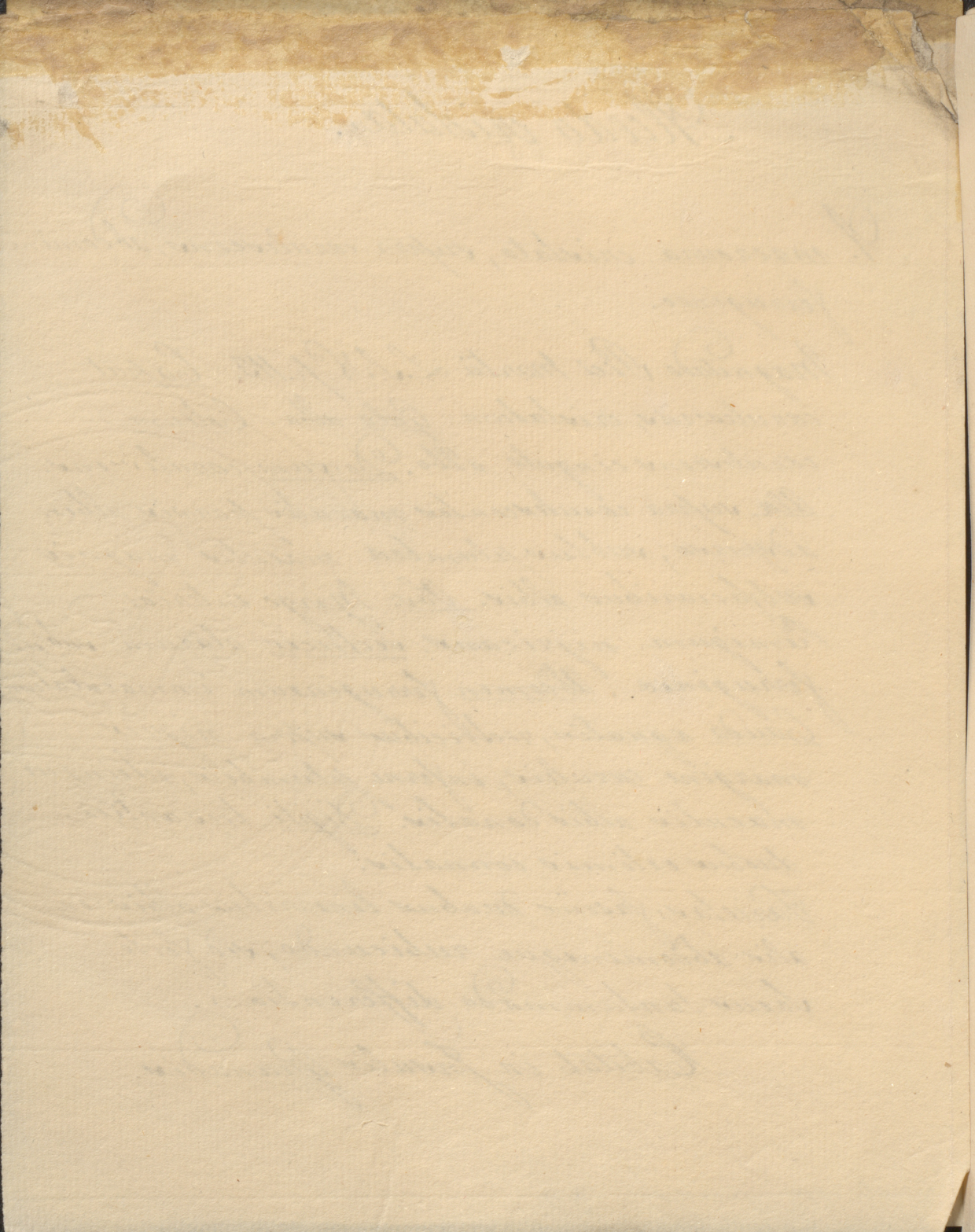
Alcedo cristata.

A. macroura cristata, supra caeruleo-ens, abdomine ferrugineo.

Magnitudo Pici Martii L. S. N. p. 113. Caput caeruleo-ens, cristatum. Gula alba. Collum caeruleo-ens cingulo albo. Dorsum caeruleo-ens. Ala supra caeruleo-ens maculis parvis albis adspersa; subtus plumbea maculis magnis subfaciariis albis. Obv. Margo interior Remigum nigricans. Rectrices alarum subtus ferrugineae. Abdomen ferrugineum immaculatum. Cauda aequalis, rectricibus supra nigris margine caeruleis, inferne plumbeis, utrinque maculis albis donatis. Digiti tres antici: duobus extremis connatis.

Varietas: fasciis duabus linearibus albis in alis abdomineque rubicundo; sed forte sexus tantummodo differentia.

Habitat in Insulis Granadis.



752
Apiaster.

s. *Merops*. dorso ferrugineo, abdomine
caudaque viridi-caerulescente, rectricibus

duabus longioribus. L. S. N. p. 117

Habitat in Europa

The Bee Eater

Spencer

A. M. 1840. New York, N. Y.

My dear Sir,

I have the honor to acknowledge the receipt of your letter of the 11th inst.

in relation to the above.

I have the pleasure to inform you that the same has been forwarded to the proper authorities for their consideration.

753
Viridis.

*M. dorso ferrugineo, abdomine atisque
viridibus, gula caudaque caeruleis. L.S. N.p. 117*

Habitat in Benghala

The Bamboo Bird

1773.

Attest in presence of the above named witnesses

and the undersigned Secretary of the said Society

at the City of New York

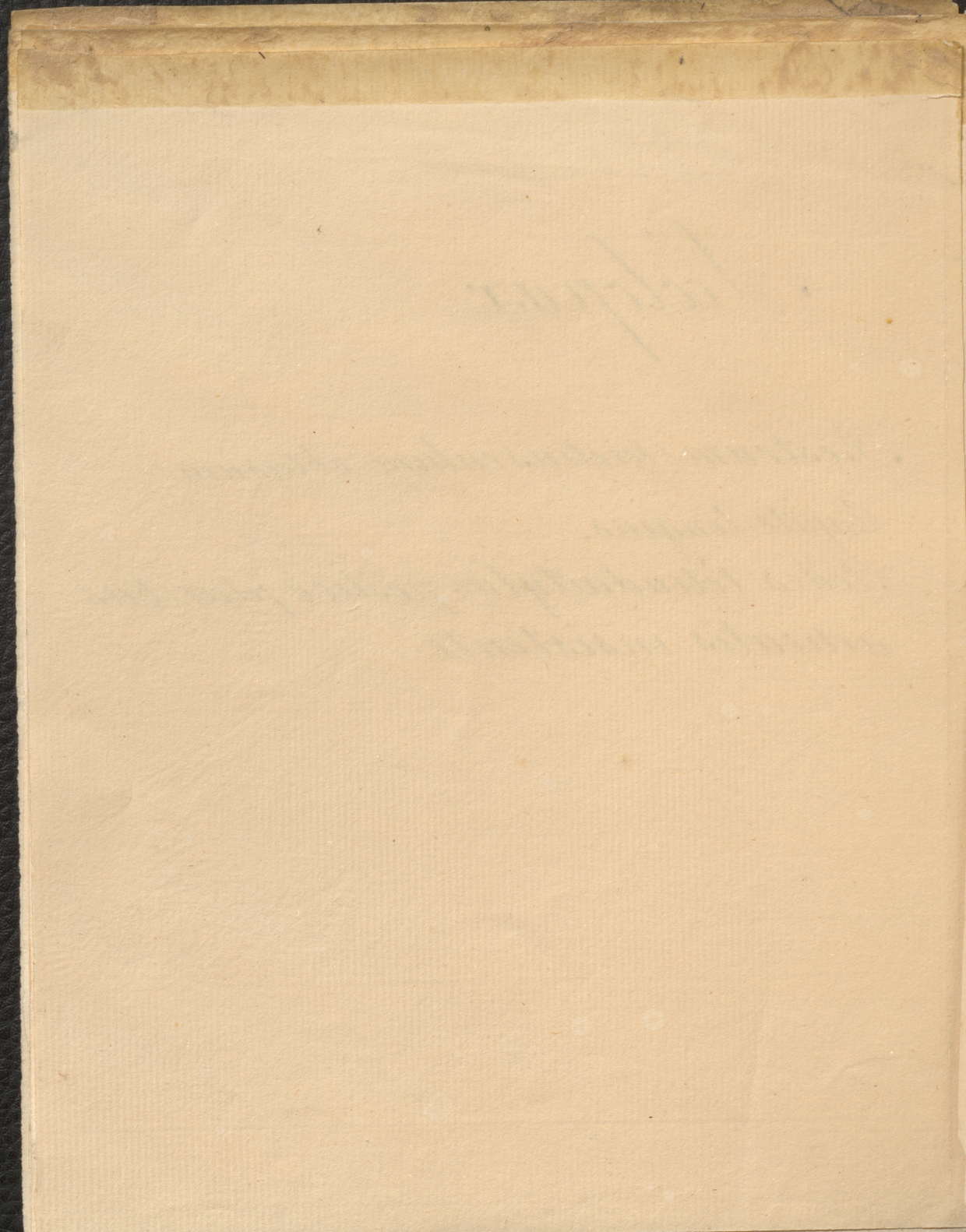
The Secretary of the Society

Scolopax

Rostrum teretiusculum obtusum

Capite longius.

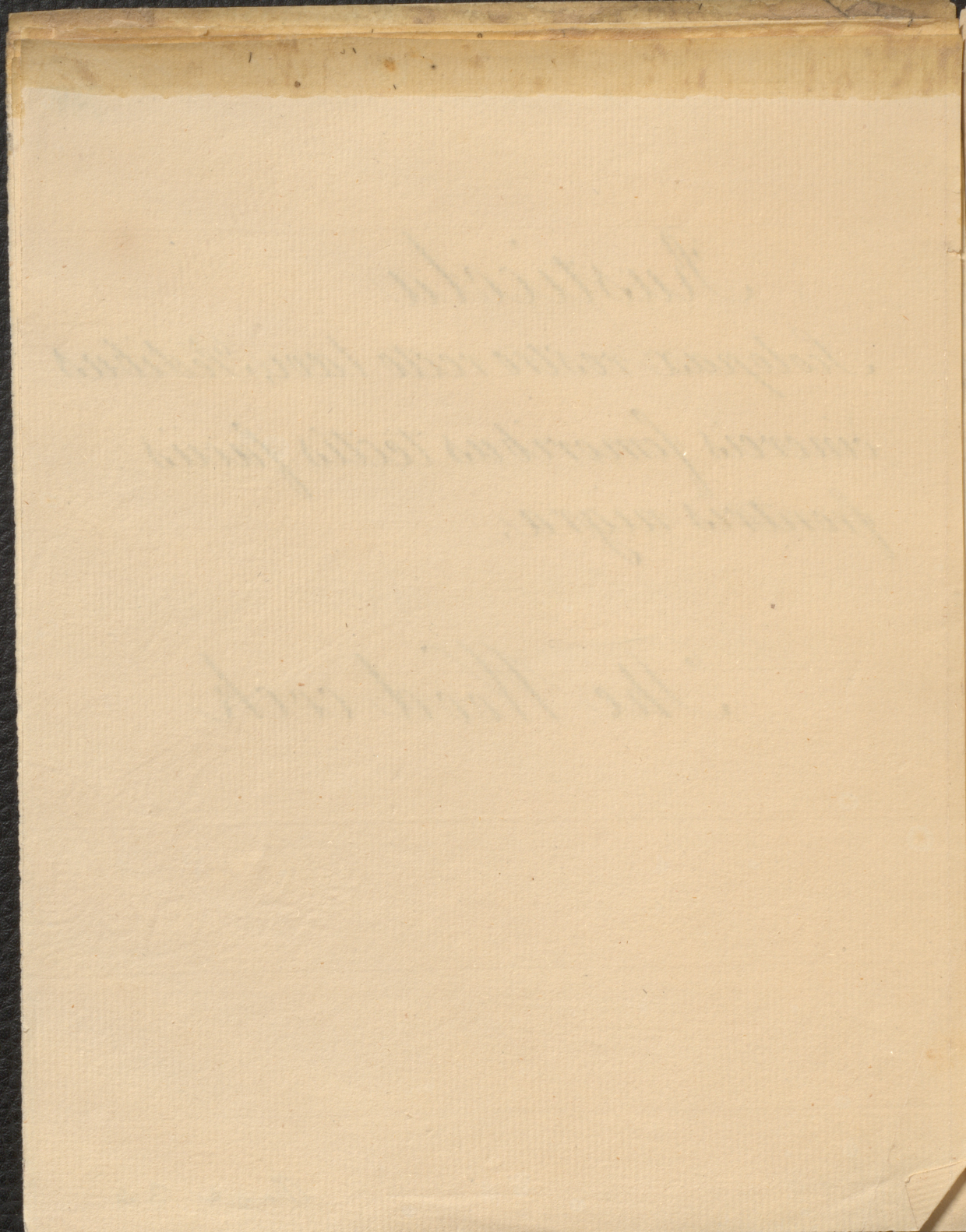
Pedes tetradactyli. postico pluribus articulis insistente



Rusticola

*Scolopax rostro recto laevi. Pedibus
cinereis femoribus tectis facies
frontis nigra.*

The Wood cock



Gallinago

Scolopax rostro recto apice

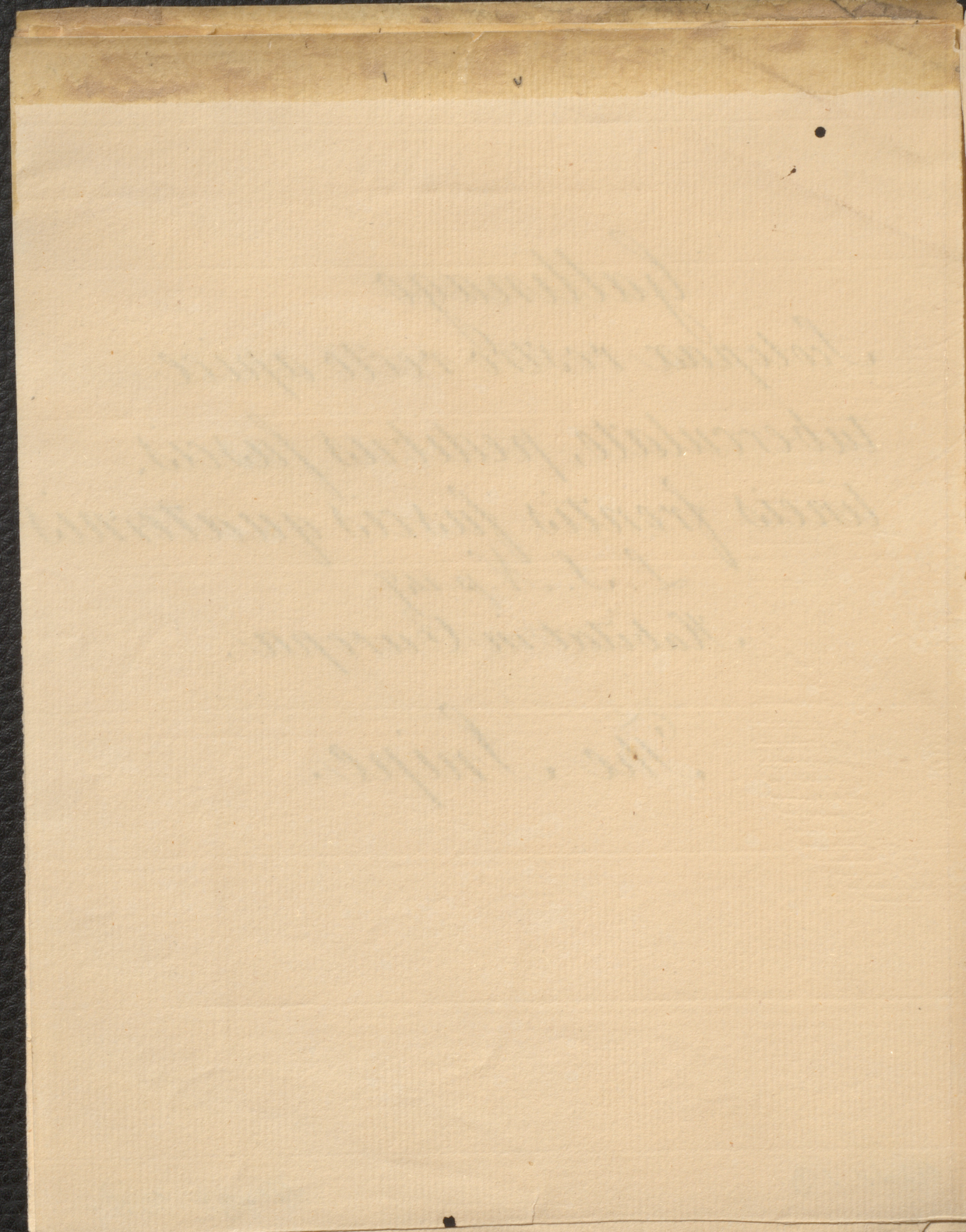
tuberculato, pedibus fuscis.

lineis frontis fuscis quaternis

L. S. N. p. 147

Habitat in Europa.

The Snipe.

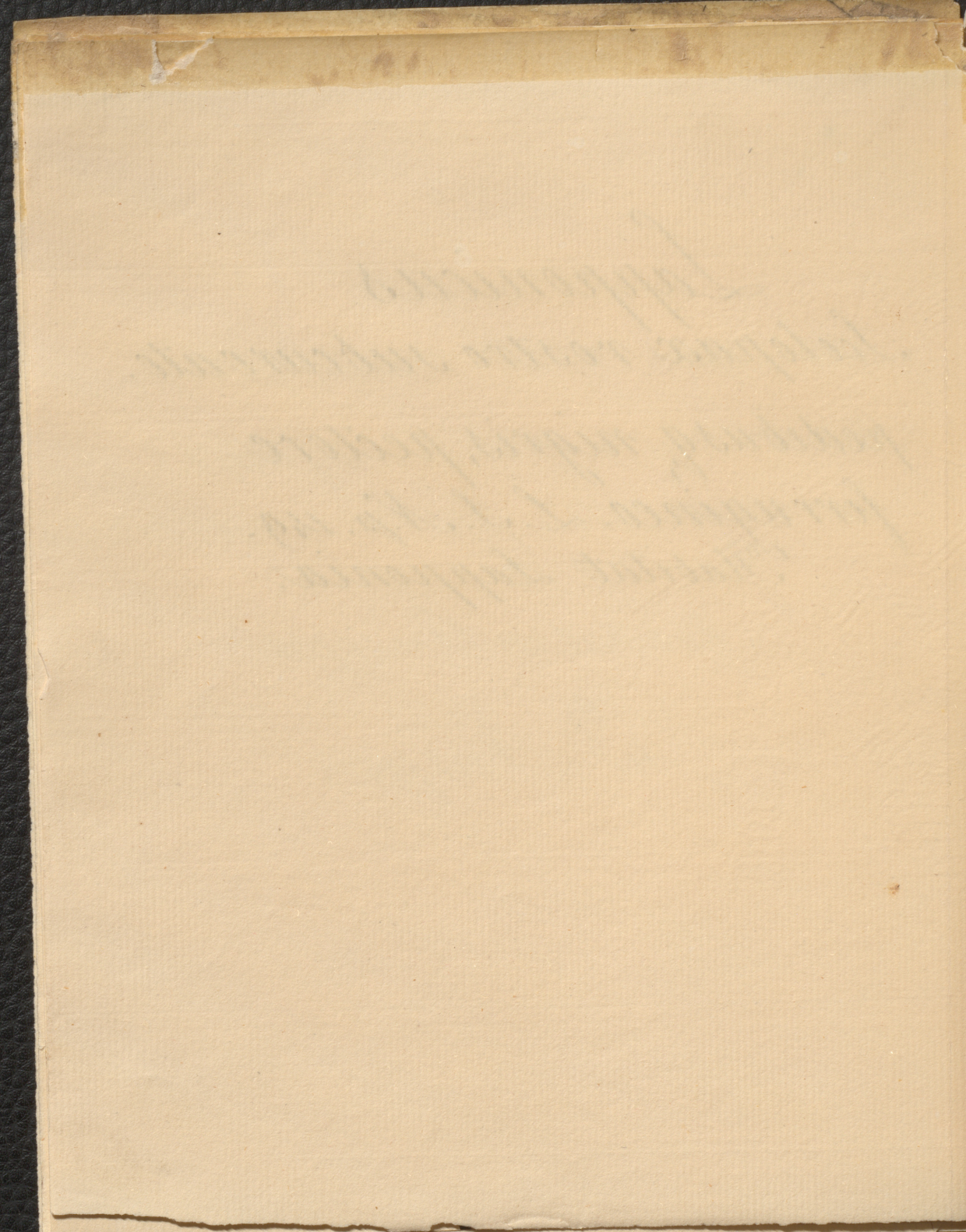


Lapponicus

Scolopax rostro subcurvato.

pedibusq; nigris, pectore
ferrugineo. L. S. N. p. 149.

Habitat Lapponia.



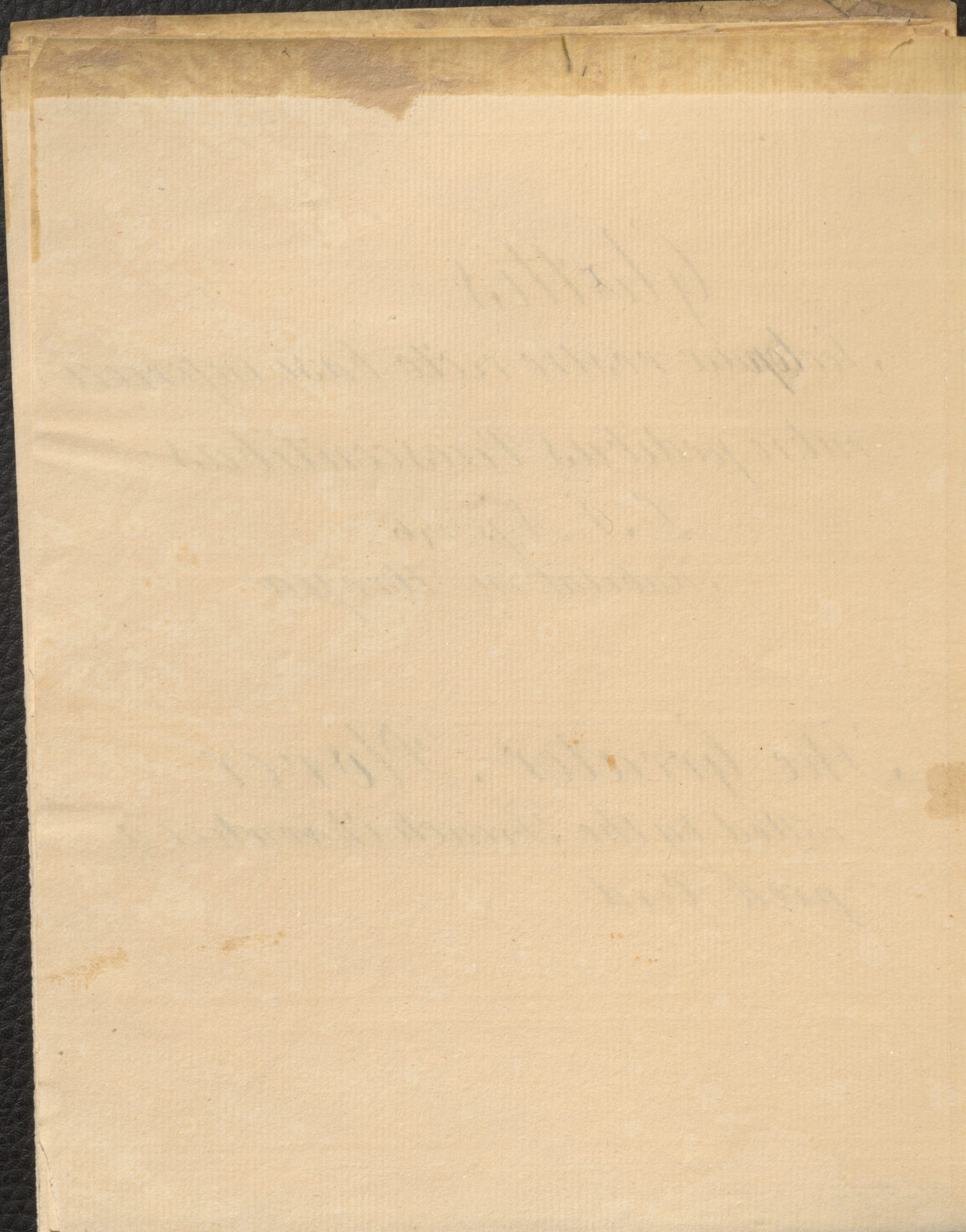
Glattis

*Scolopax rostro recto basi inferiori
rubro pedibus virescentibus.*

L. S. N. p. 146.

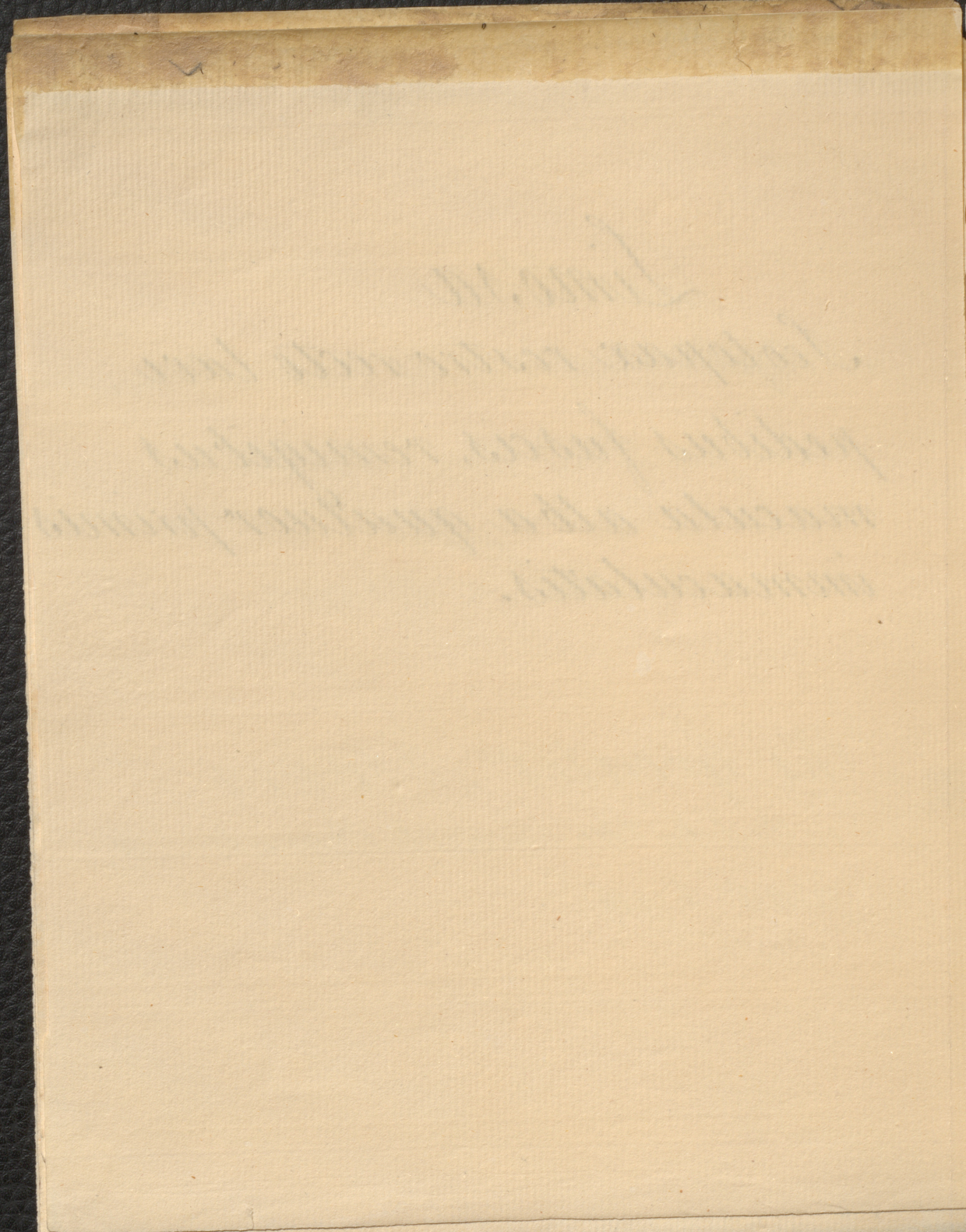
Habitat in Uropa

*The Greater Plover
called by the French Chevalier a
pied Verd*



Limosa

*Scolopax vestro recto lavi
pedibus fuscis, remigibus
macula alba quatuor primis
immaculatis.*

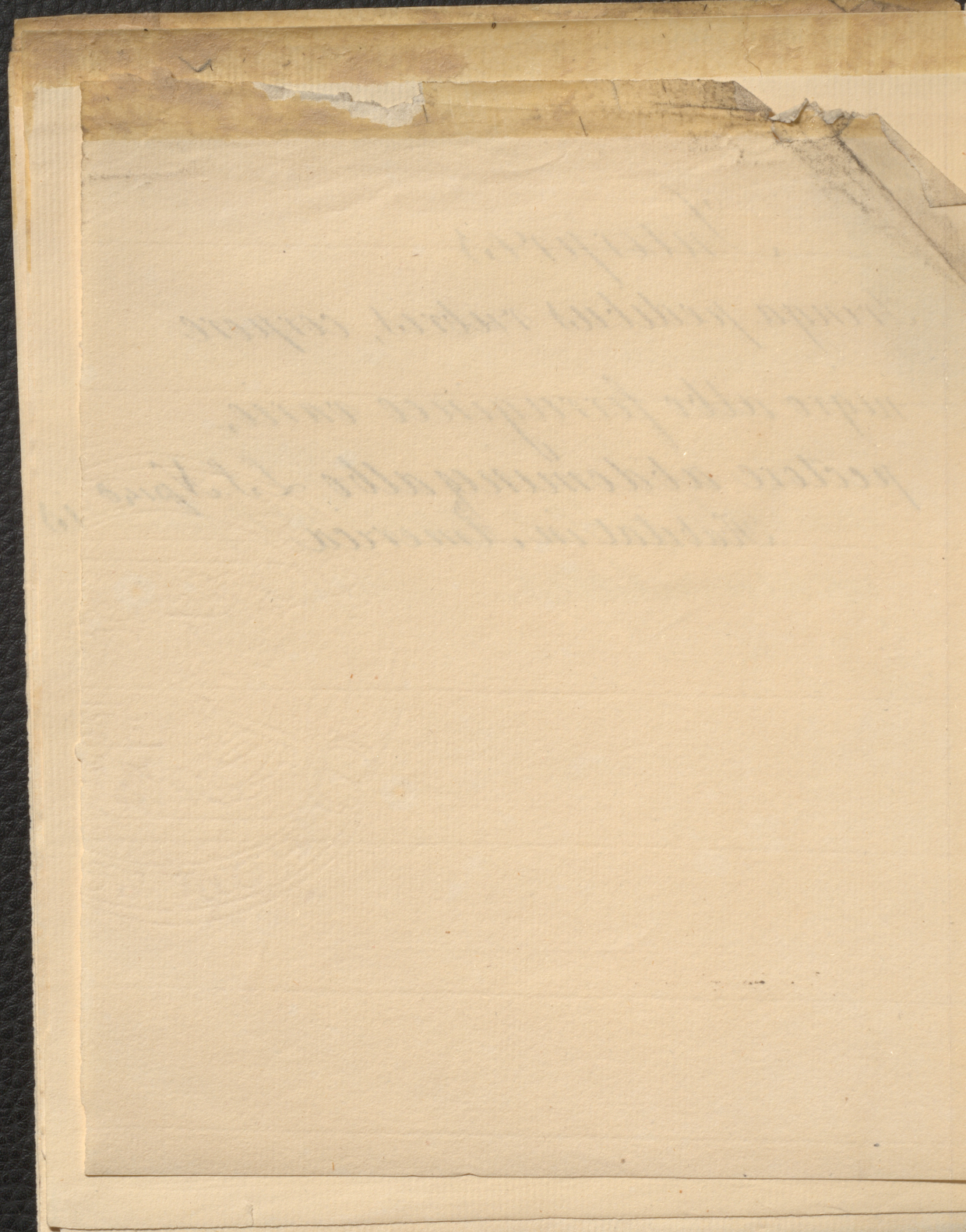


763
762

761

Interpres

*Tringa pedibus rubris, corpore
nigro albo ferrugineo vario,
pectore abdomineq; albo L. S. N. p. 140
Habitat in America*



263
762

Agrocephala

Scolopax rostro recto, pedibus
virescentibus, capite colloque
rufescentibus, remigibus
tribus nigris basi albis. L. S. N. p. 147
Habitat in Europa

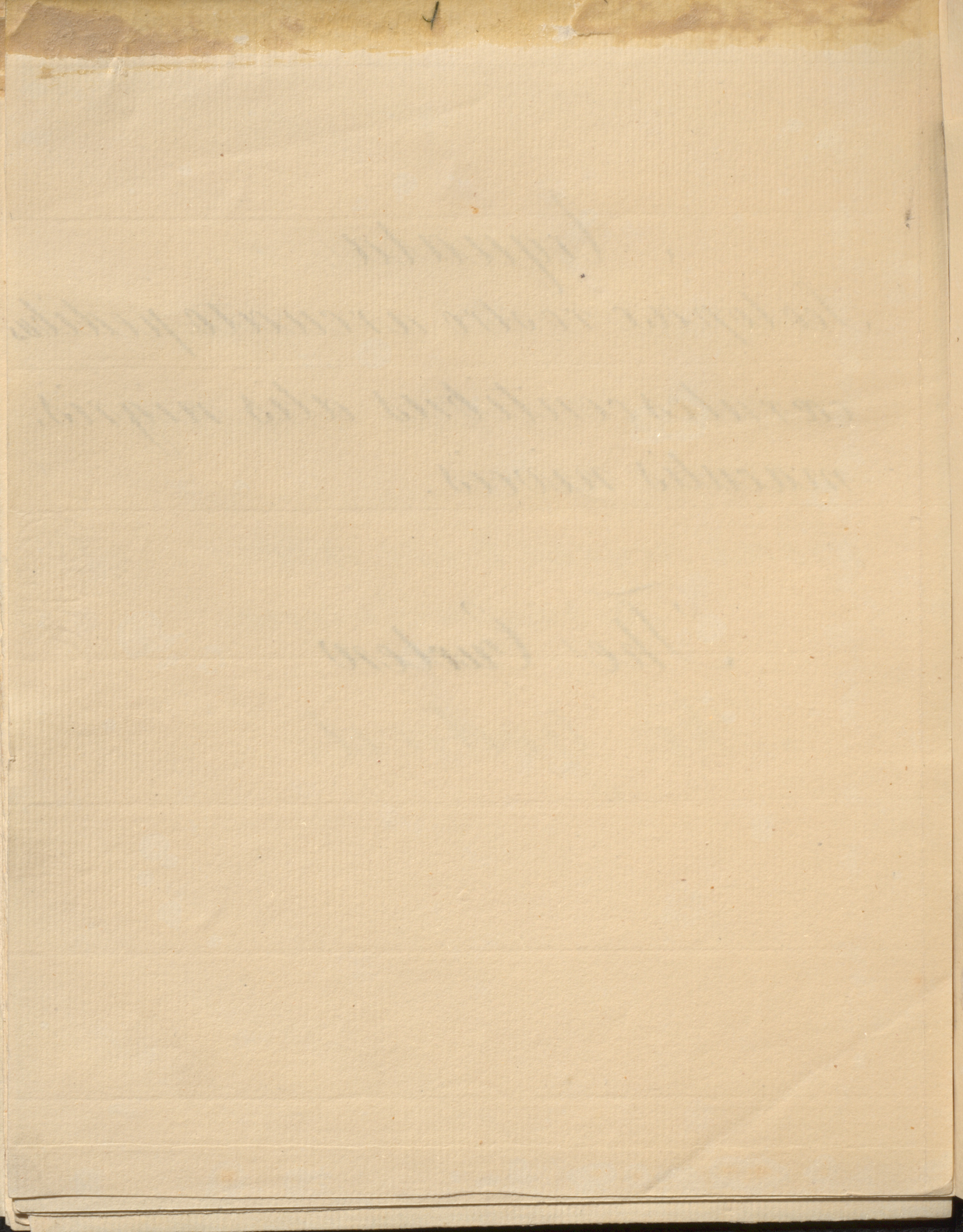
The Godwit.

[Faint, illegible handwriting, likely bleed-through from the reverse side of the page.]

Arquata

*Scolopax rostro arcuato pedibus
cærulescentibus alis nigris,
maculis niveis.*

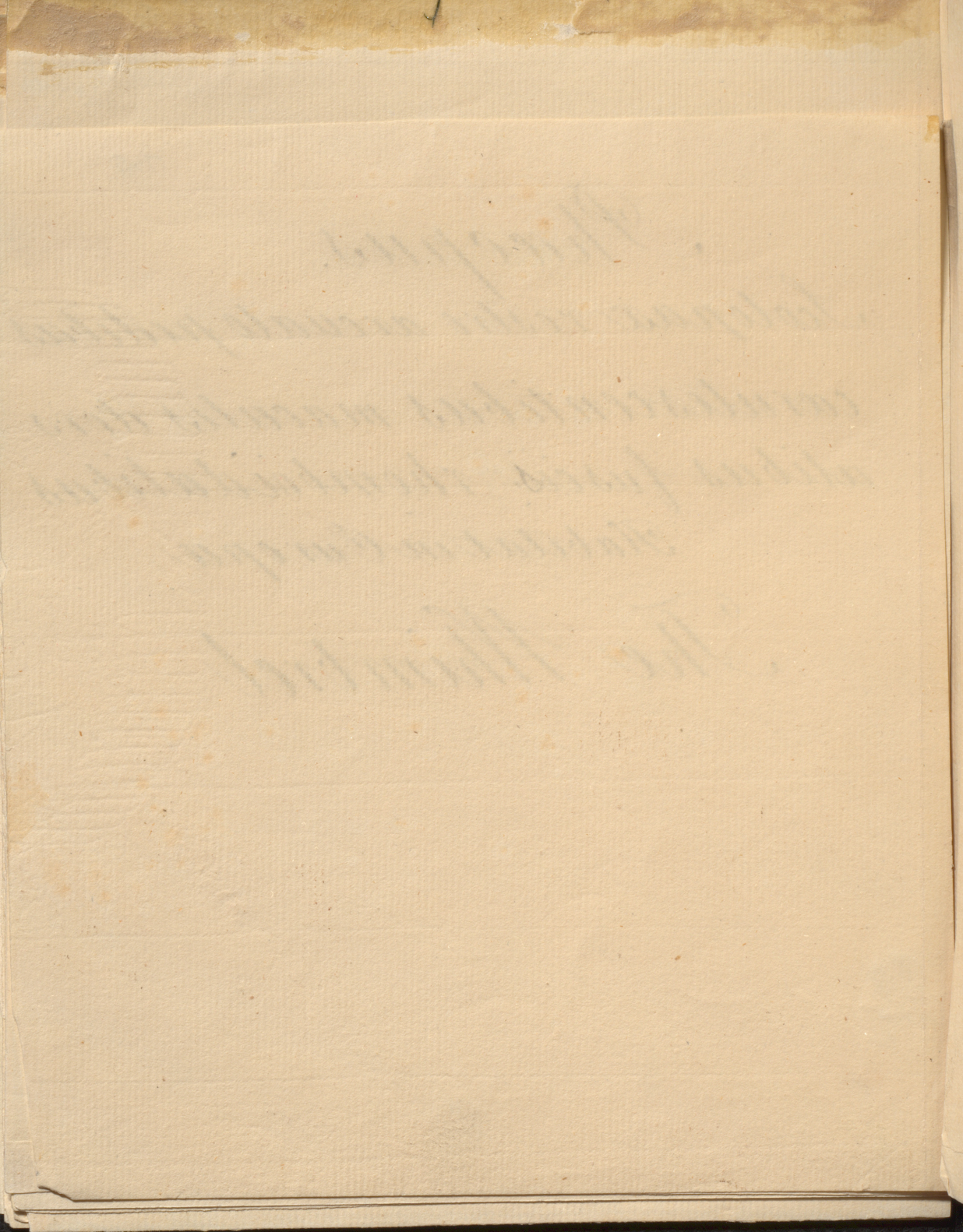
The Curlew



Picaopus.

*Scolopax rostris arcuato pedibus
caerulescentibus maculis doris
alibus fuscis rhomboïdalibus
Habitat in Europa*

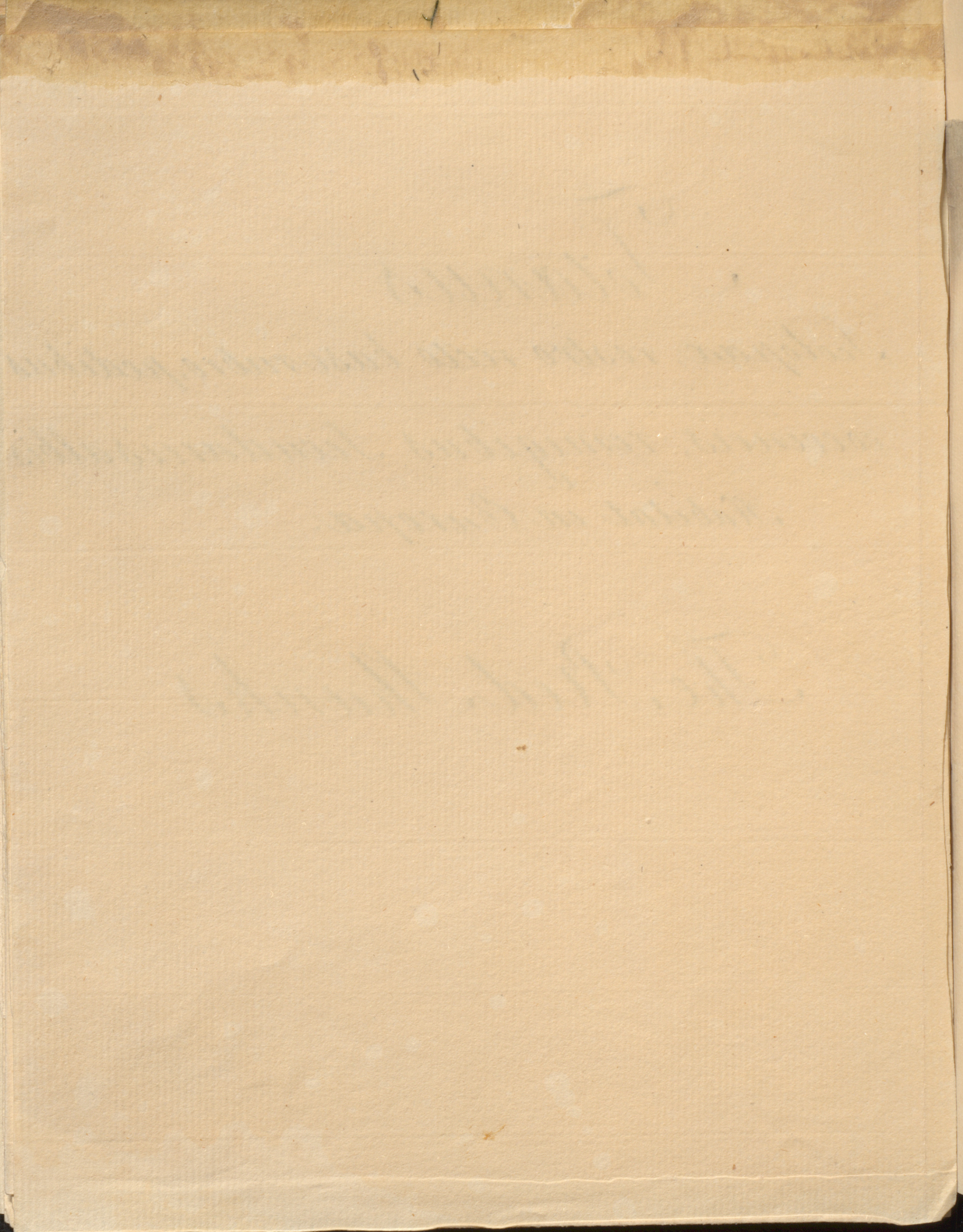
The Whimbrel



Totanus

*Scotopax. rostro recto basi rubro, pedibus
coccineis, remigibus Secundariis albis
Habitat in Europa.*

The Red Shanks

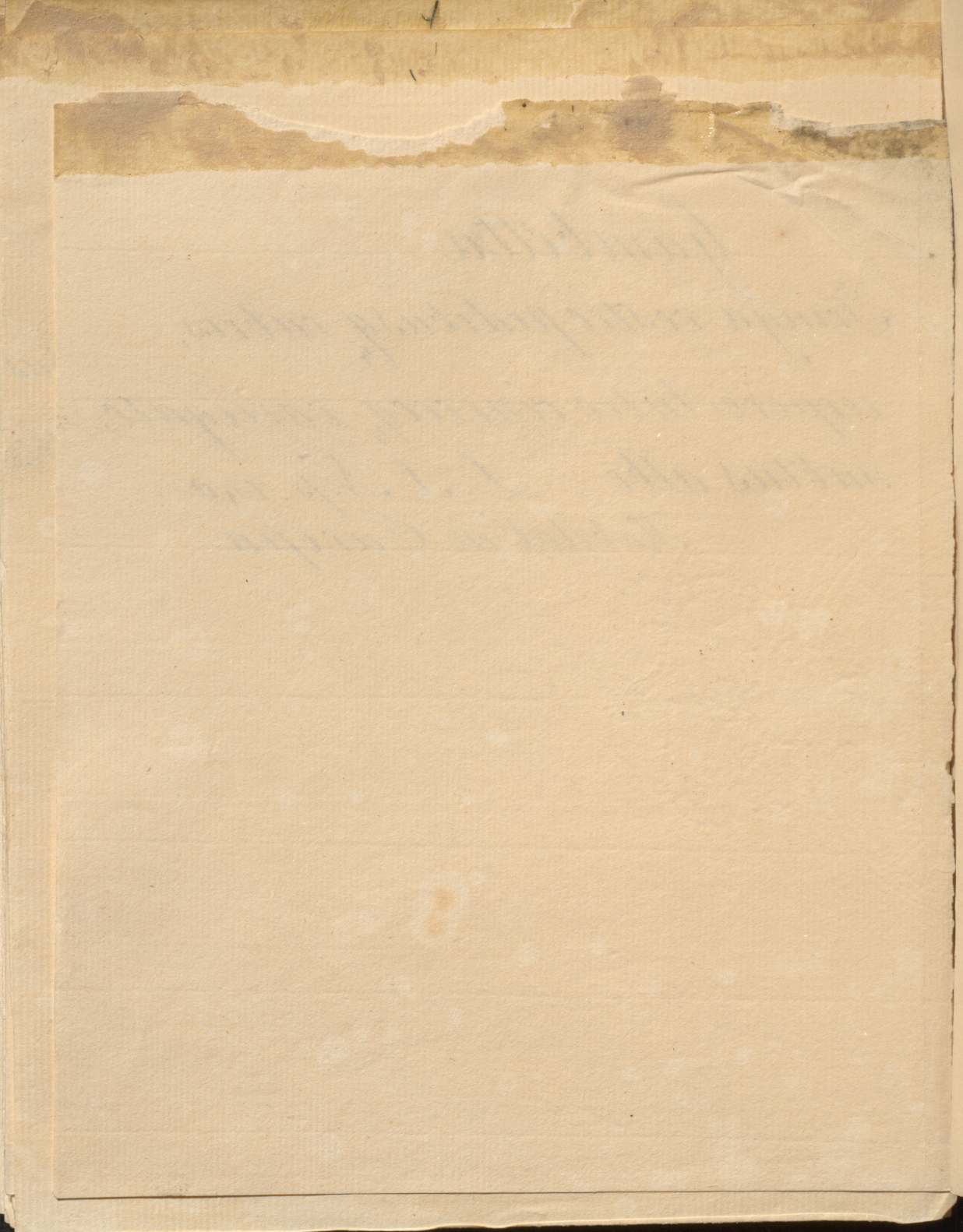


770

769

Gambetta

Tringa rostro pedibusq; rubris,
corpore luteo cinereq; variegato,
subtus albo. L. S. N. p. 140
Habitat in Europa

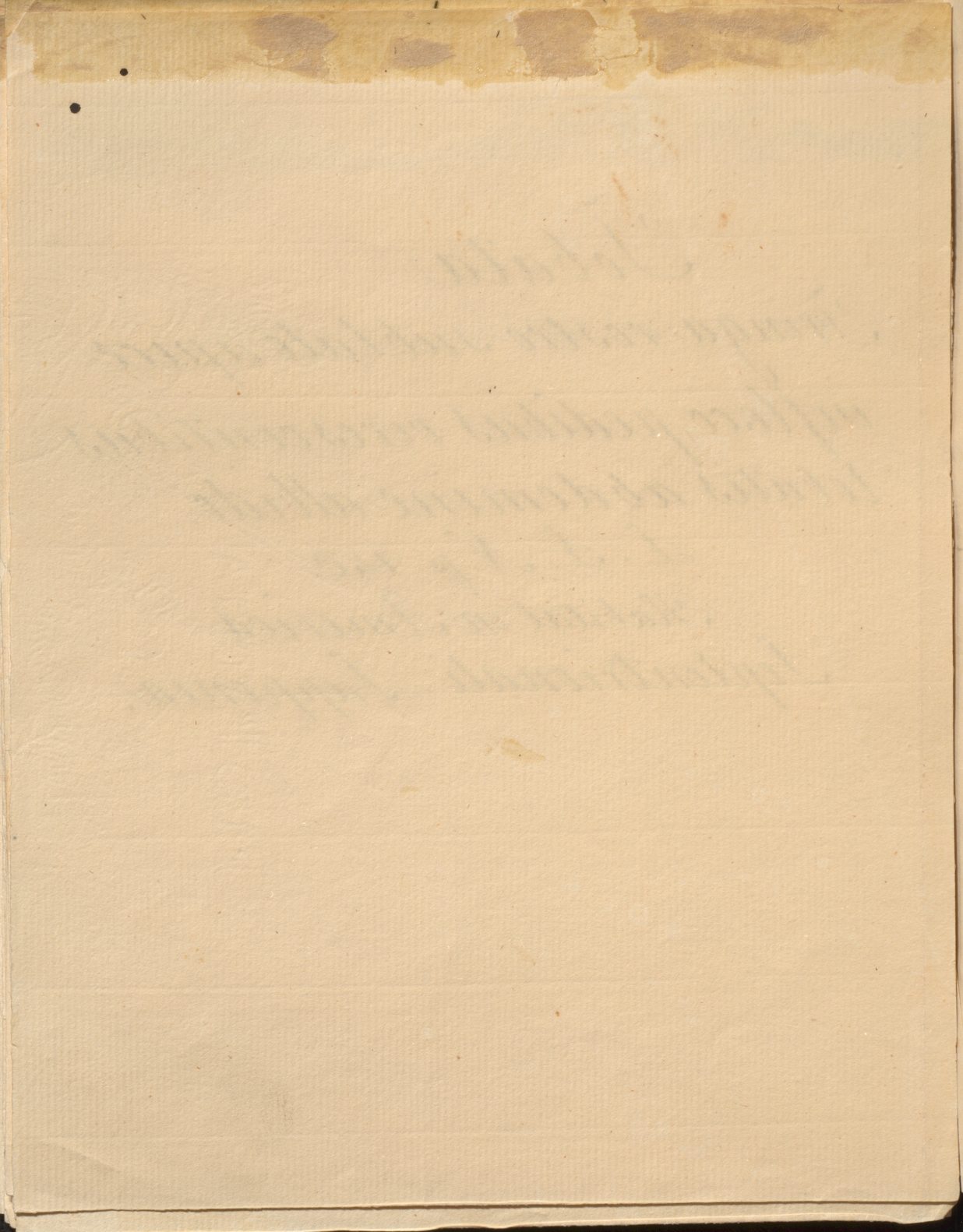


Tobata

Tringa rostro subtrato apice
inflexo, pedibus virescentibus
lobatis abdomine albido.

L. S. N. p. 140

Habitat in America
Septentrionali. Lapponia.



Morinellus Marinus

The
Turn Stone
or
Sea Pottrel.

Handwritten text, likely bleed-through from the reverse side of the page.

Handwritten text, likely bleed-through from the reverse side of the page.

Handwritten text, likely bleed-through from the reverse side of the page.

Handwritten text, likely bleed-through from the reverse side of the page.

Fulicaria

*Fringa rostro recto pedibus, ^{lobatis} sub
fuscis abdomine ferrugineo.*

Habitat in America

is

Faint, illegible handwriting, possibly bleed-through from the reverse side of the page.

Faint handwritten mark or signature in the bottom right corner.

Canutus

*Tringa rostro laevi, pedibus
 cinerascens, remigibus
 primoribus serratis. L. S. Np. 149^{is}
 Habitat in Europa*

The Knot

1

6

Counties

County of ...

County of ...

County of ...

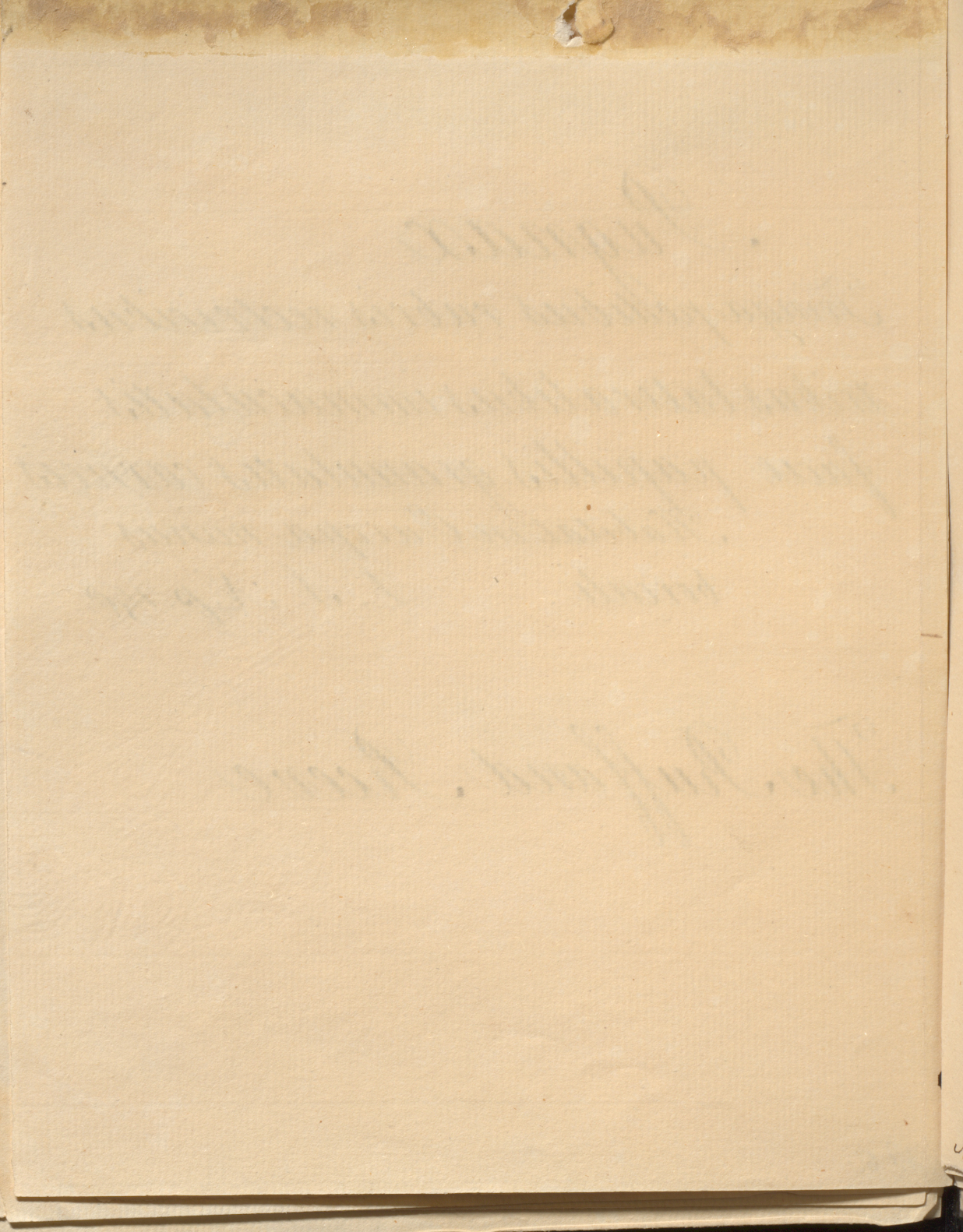
County of ...

County of ...

Pugnax

*Fringa pedibus rubris rectricibus
tribus lateralibus immaculatis
facie papillis granulatis carnis
Habitat in Europa minus
boreali. L. S. N. p. 140*

The Ruffard Reeve

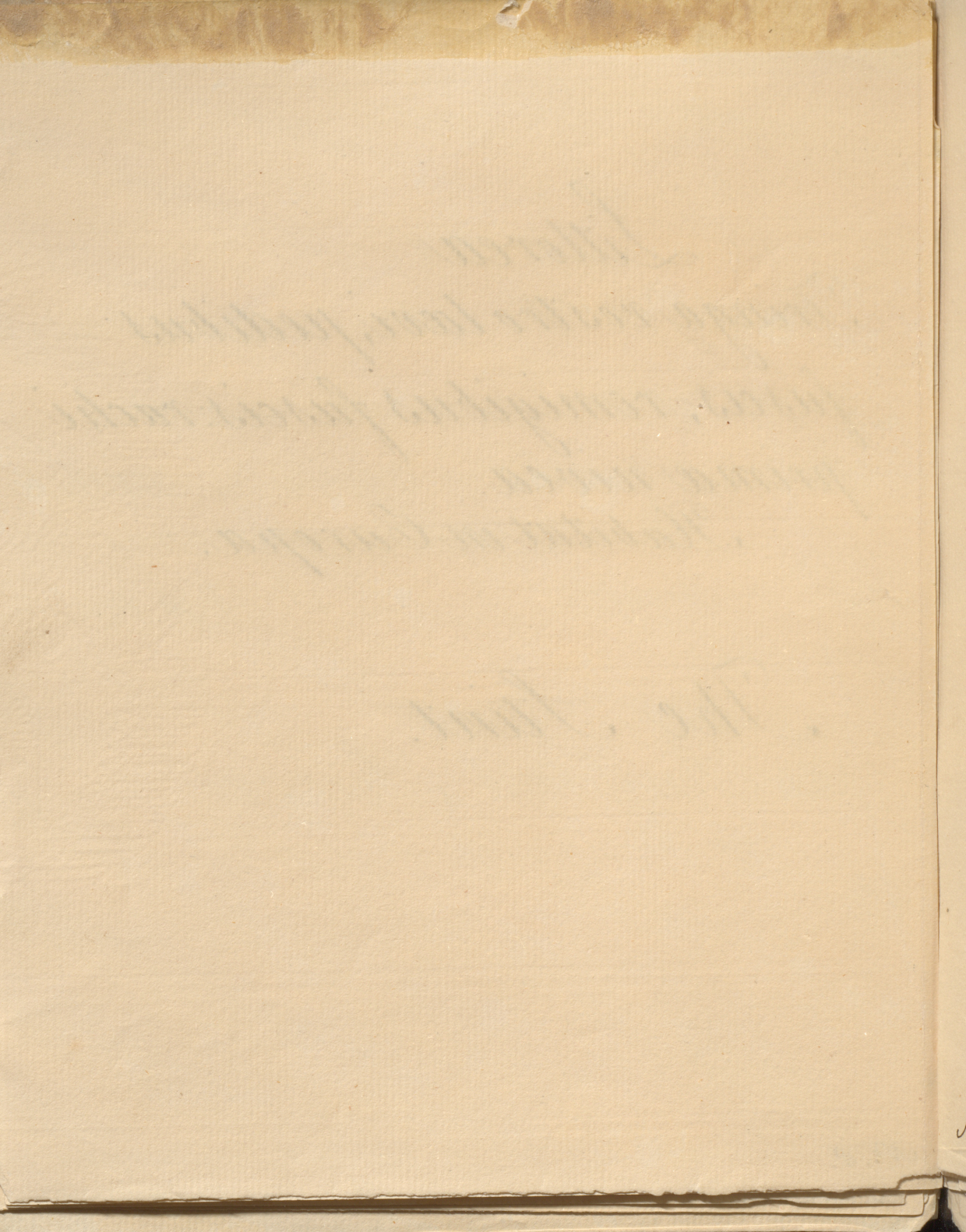


Littorea

Tringa rostro laevi, pedibus
fuscis, remigibus fuscis: rachi
prima nivea.

Habitat in Europa.

The Stint.

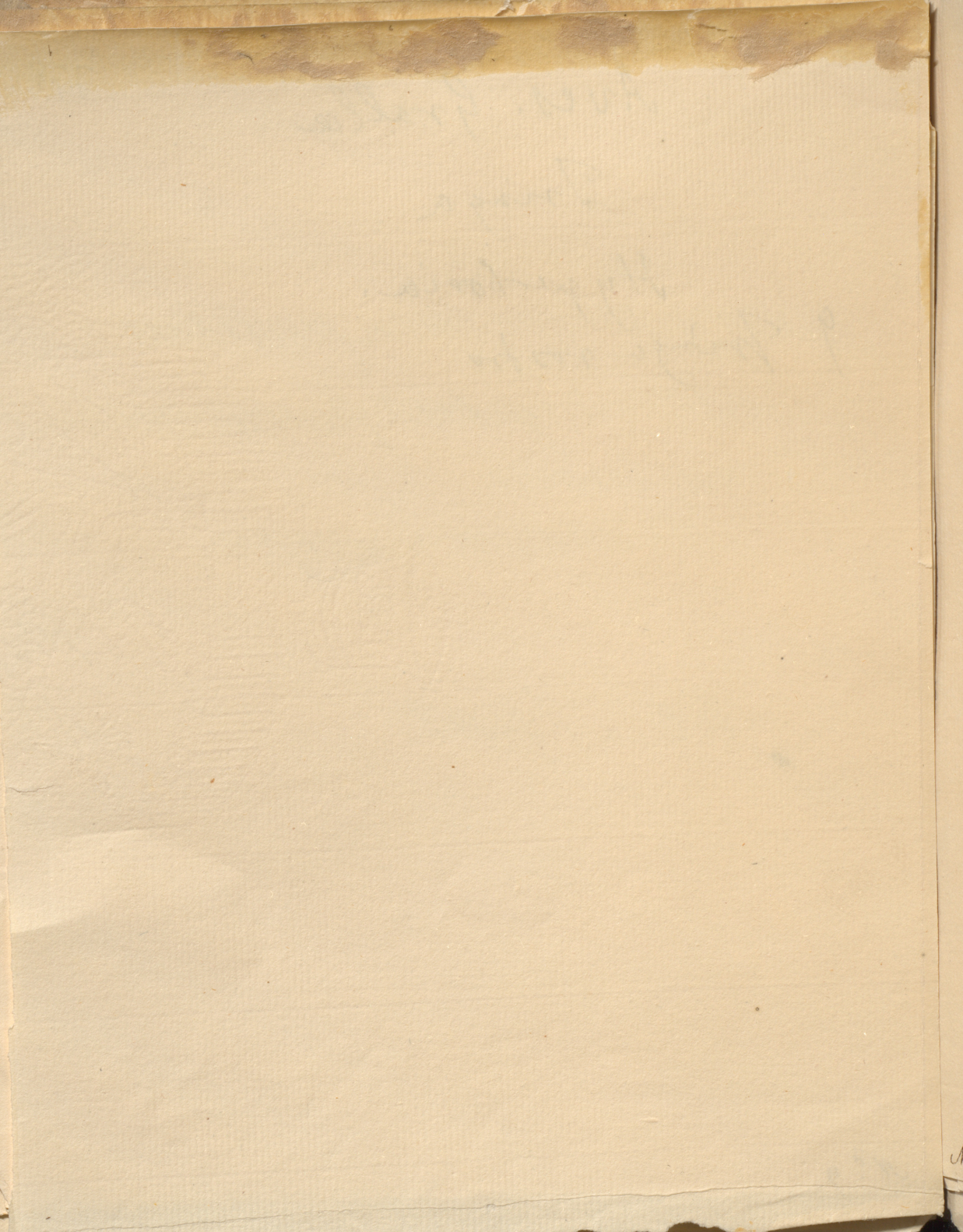


Aves. Gralla

Tringa

Hyperborea.

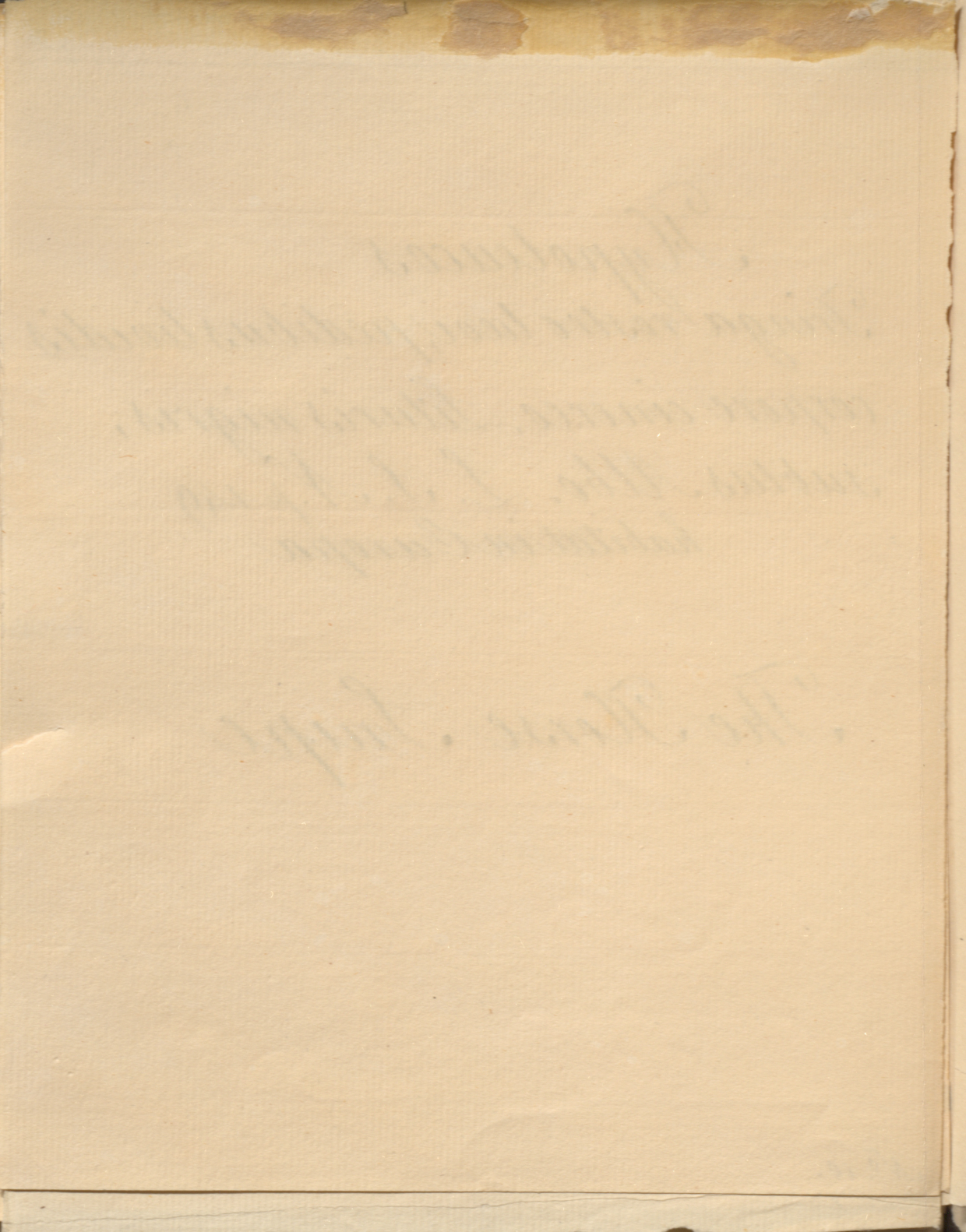
9 Tringa rostrata



Hypoleucos

Fringa rostro levi, pedibus lividis
corpore cinereo, Tituris nigris;
subtus Albo. L. S. N. p. 149
habitat in Europa

The Horse Snipe



*Oedienemus**Charadrius, griseus, remigibus**primoribus duabus nigris, medio
albis, rostro acuto, pedibus cinereis.**Habitat in Anglia. L. S. N. p. 355.**The Stone Curlew.*

Chlorophyll

Chlorophyll is a green pigment

found in plants and algae

which captures light energy

for photosynthesis

The main function

Varellus

*Tringa pedibus rubris, crista dependente
pectore nigro.*

Habitat in Europa et Africa.

The Lapwing

Carroll

My dear father

My dear father

My dear father

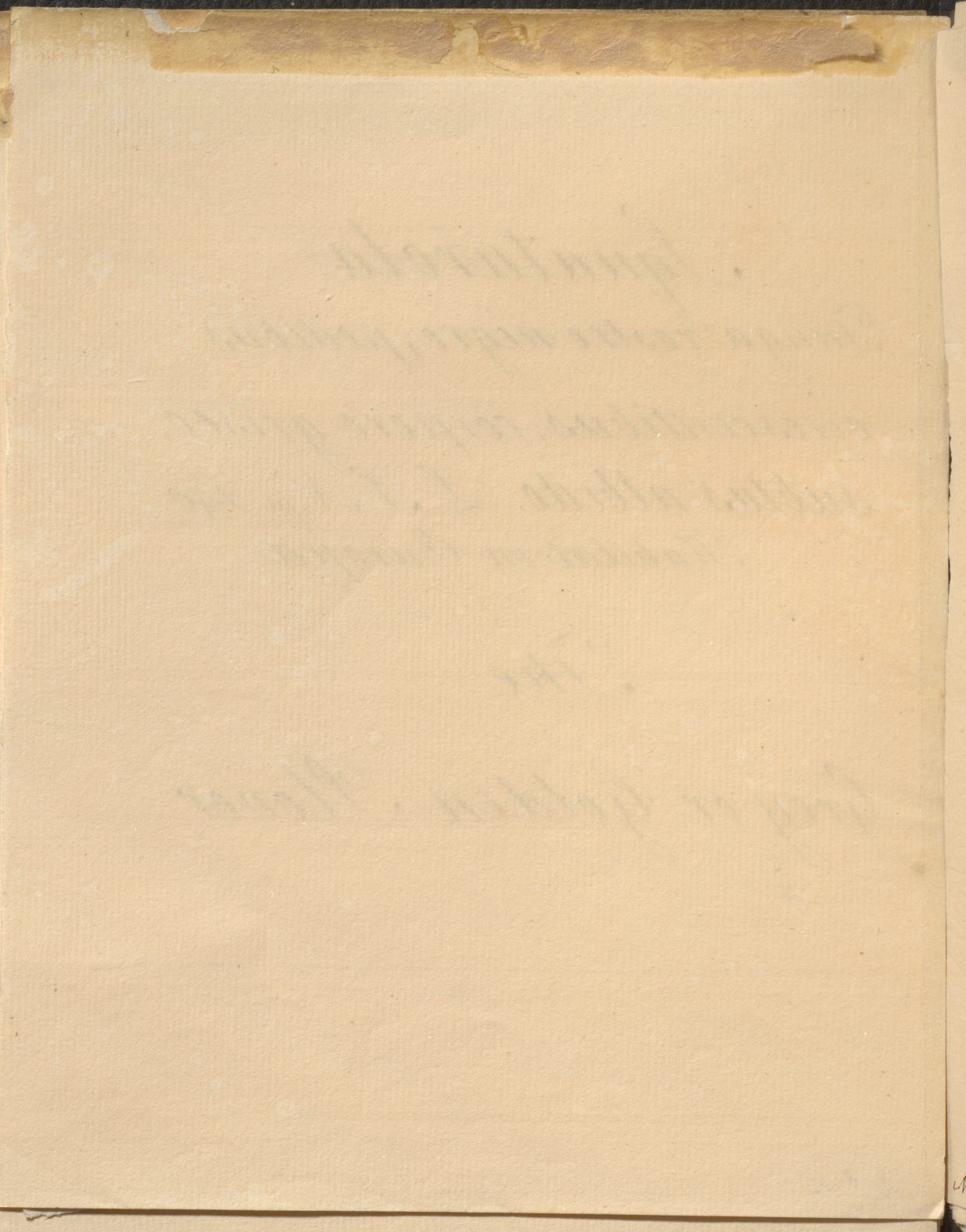
My dear father

1811

Squatarola

Fringa rostro nigro; pedibus
virescentibus, corpore griseo,
subtus albido. L. S. N. p. 140
Habitat in Europa

The
Grey or Golden Plover



Least Curlew
in

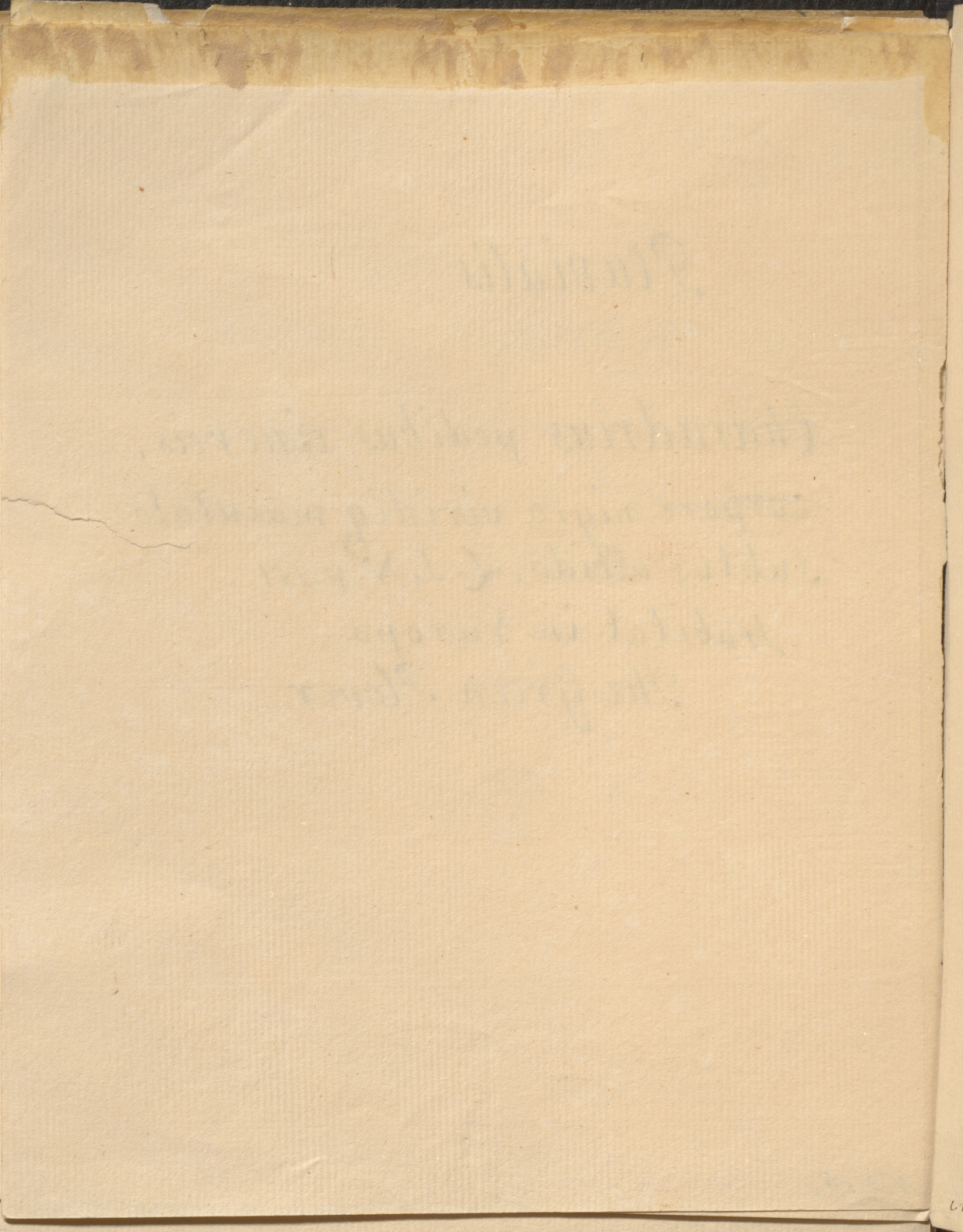
785

Pluvialis

Charadrius pedibus cinereis,
corpore nigro viridique maculato
subtus albido. L. S. N. p. 151

Habitat in Europa.

The Green Plover.



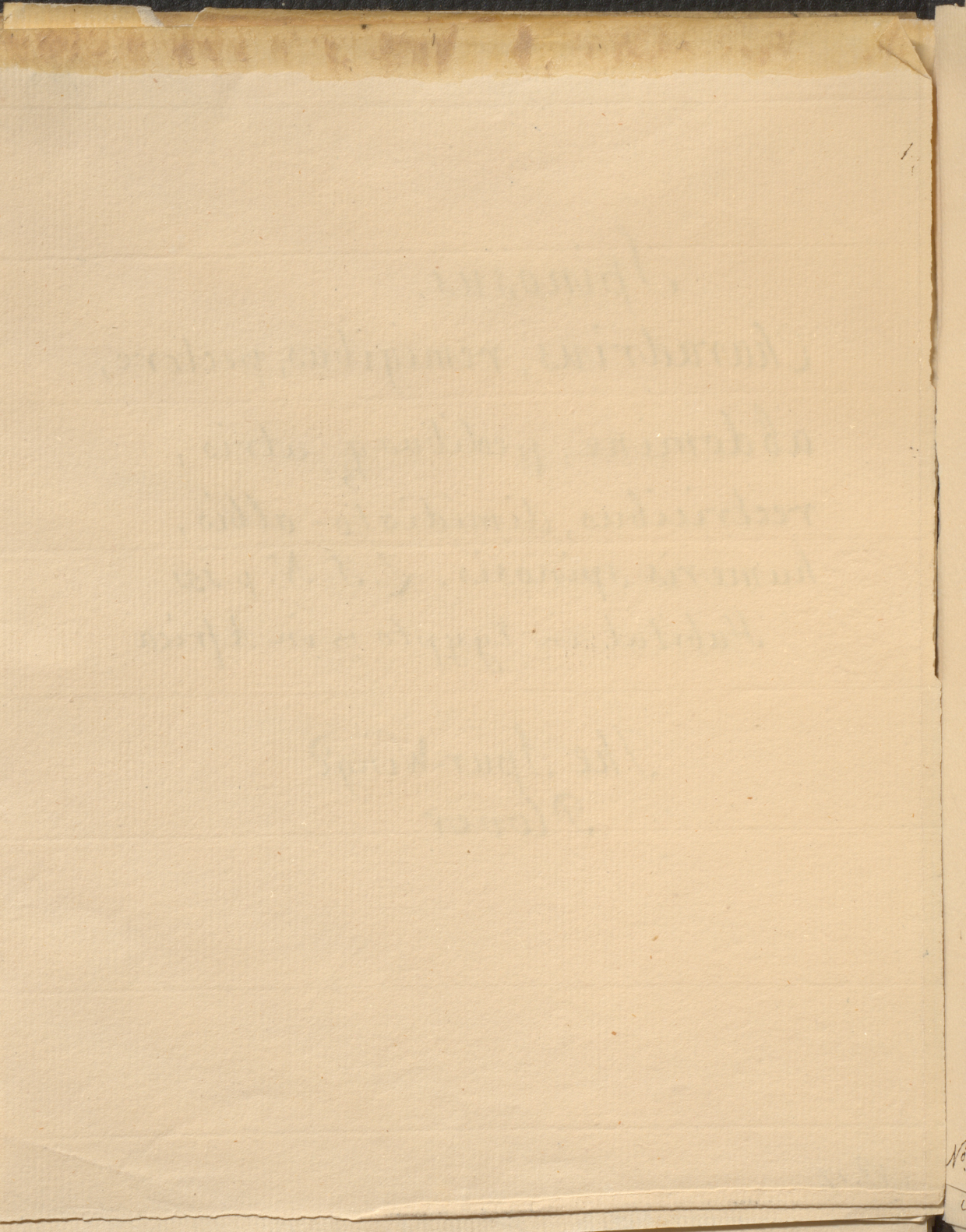
Least Curlew
in ...

Spinosus.

*Charadrius, remigibus, pectore,
abdomine, pedibus q₃ atris,
rectricibus, dimidiato-albis,
humeris spinosis. L. J. N. p. 151*

Habitat in Egypto & in Africa

*The Spur-wing'd
Plover*



least Curlew

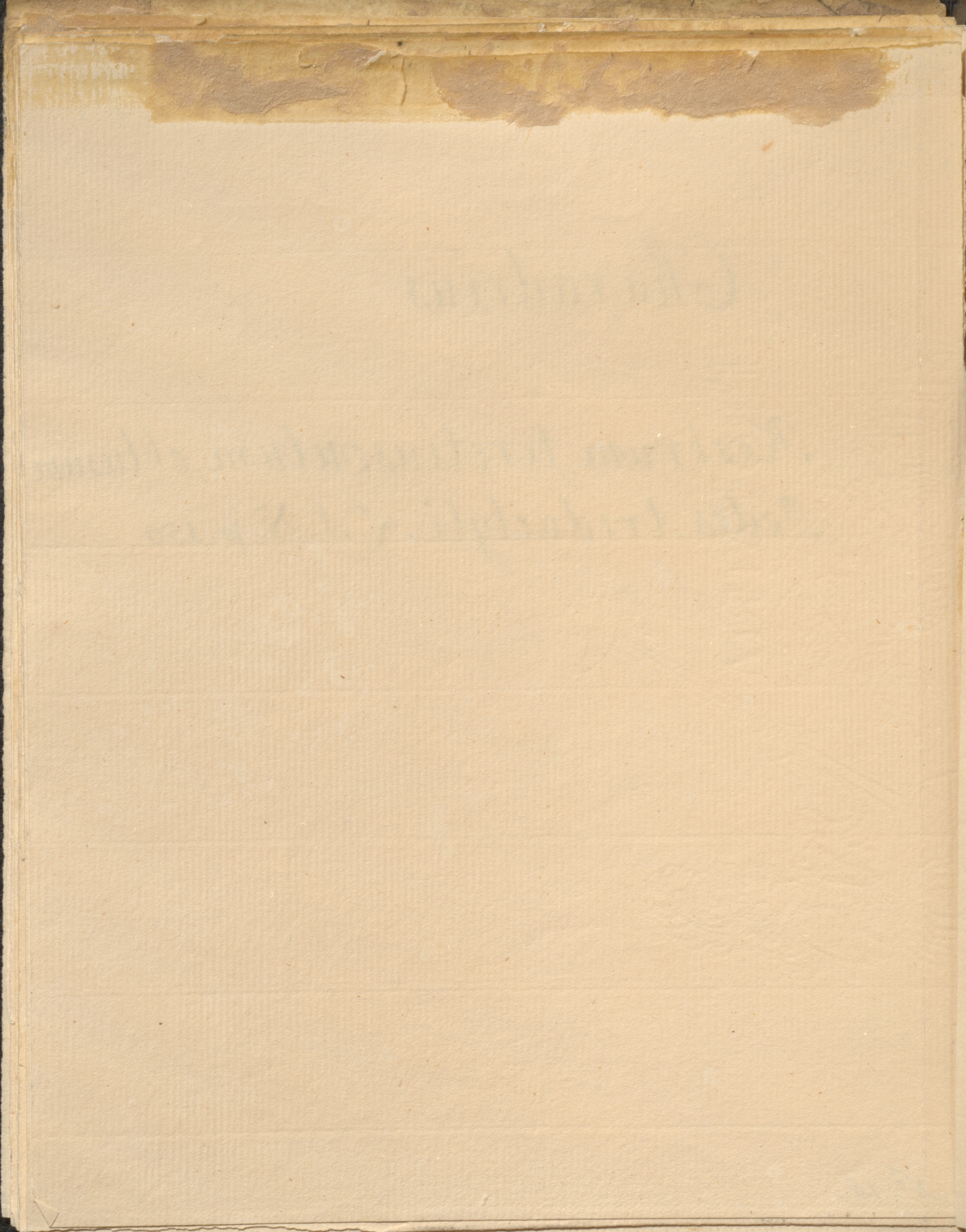
787

Charadrius

Rostrum, teretiusculum, obtusum
Pedes, tridactyli. L. S. N. p. 150

No. 10.

No. 10



Morinellus

*Charadrius pectore ferrugineo,
fuscia superciliarum pectorisq
lineari alba, pedibus nigris*

L. J. N. p. 150

Habitat in Europa

The Pottrel

Hiaticula

*Charadrius, pectore nigro, fronte
Nigricante fusciola alba, vertice
fusco, pedibus luteis. L. S. N. p. 150
Habitat in Europa
ad ripas.*

The Sea Lark

[Faint, illegible handwriting, likely bleed-through from the reverse side of the page.]

[Faint, illegible handwriting, likely bleed-through from the reverse side of the page.]

Bill $2 \frac{1}{2}$ upper Mandible Black in

790

Avosetta

R. albo nigroque varia. L. N. Sp. 151

Habitat in Europa

N^o 21.

Oct 13

Page

Recurvirostra

Rostrum depresso planum,
acuminatum, recurvatum.

Pedes palmati, tetradactyli.

[Faint, illegible handwriting, likely bleed-through from the reverse side of the page.]

[Faint handwritten notes or numbers in the bottom right corner.]

Least Curlew

Bill ⁱⁿ 2 $\frac{1}{2}$ upper Mandible Black under
mandible partly red.

length from point of the Bill to the tail
15 inch $\frac{1}{2}$

the distance of the tips of the Wings when
open 25 inches. the Wings are longer than
the tail

the length of the legs from the top of thigh
to the end of the middle toe 6 inch $\frac{1}{2}$

This Bird agrees in colour with the
former except the ^{dark} Black line drawn from
the bill over the Eyes are wanting
of the Body of this is much less.

I know not whether this differs in Sex
only or is a Different Species.

Ardea Galla
Scelopax
Namenius minor

Pheopus minor.

S. rostro arcuato, pedibus nigricantibus.
penoribus peni nudis.
~~Superiore~~ parte superiore corpore fusco.

margine plumarum pallidis & in dorso & superiore
parte alarum seratis. quae parte inferiore pallida
maculis tenuifusis fuscis notata.

habitat in Terra Nova.

The Small New foundland Curlew.

Its Bill hooked, in length 2 inch $\frac{1}{2}$

the feet dark coloured almost Black

the thighs are half naked as in most birds of this species

The length of the body from the extremity of
from point the Bill to the Tail is sixteen inches

The extent of the Wings when open 2 foot 6 inches
length of the legs 6 inch 3 qts

The colour of the upper part of the Body
Dark brown each feather Edged with a pale or light
brown these edges in the feathers which cover the
Back are indented like a saw. The belly White

This Bird with many others were brought me
from the North America by my ~~country~~ ^{land} friend
Hodgkins a Banks Esq