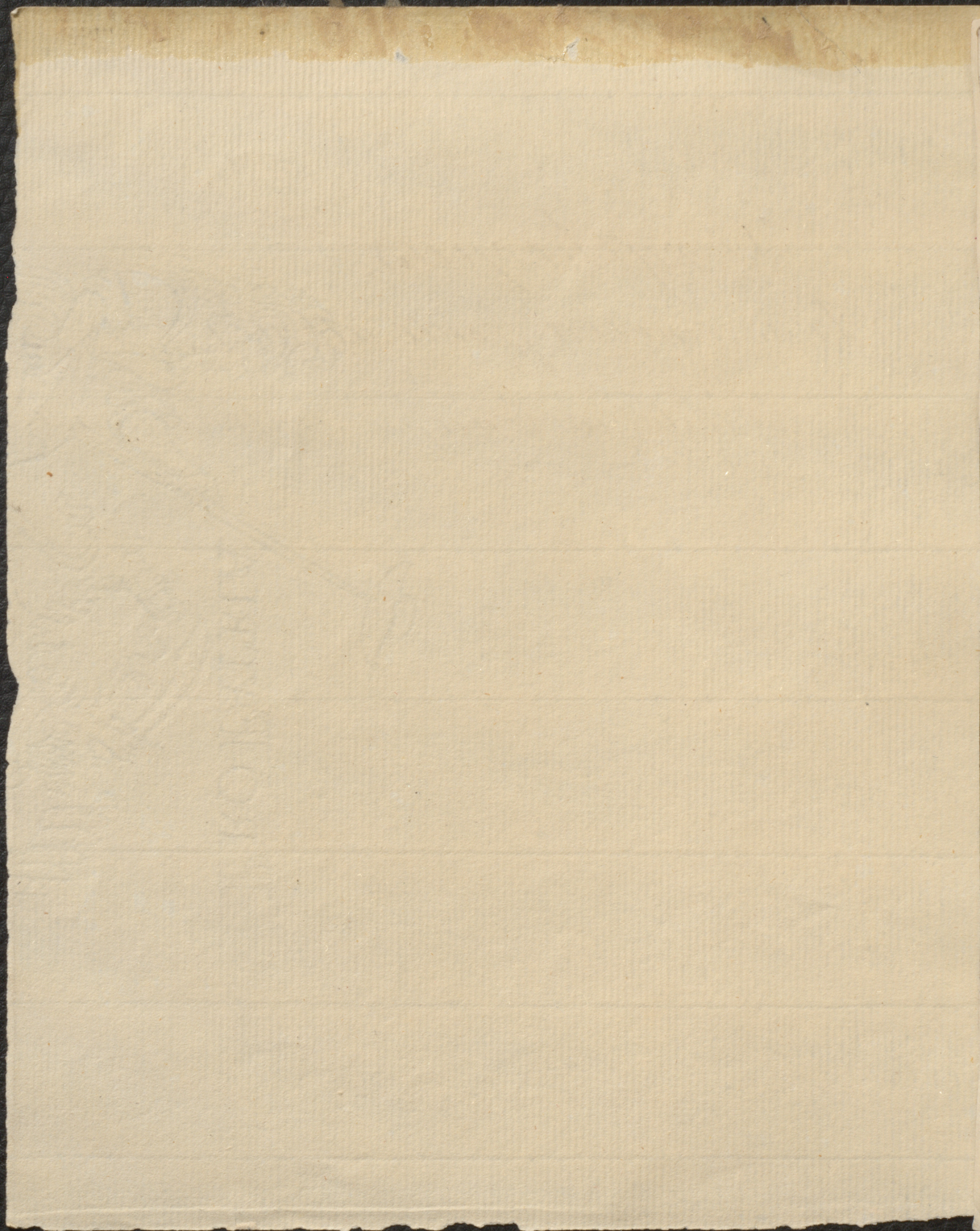


Erythropus.

Anas, cinerea fronte alba. L. S. N. p. ~~120~~

123

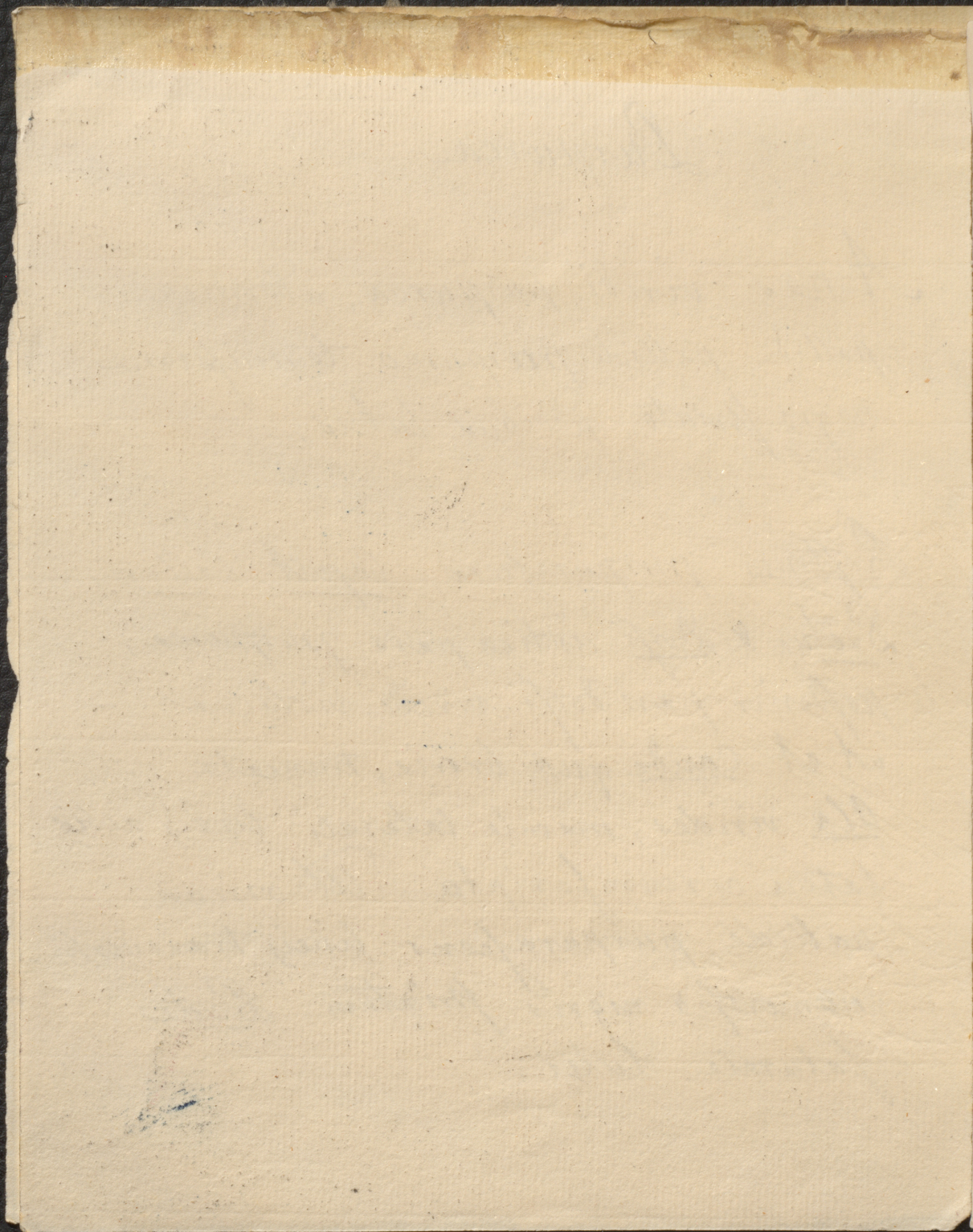
Habitat in Europa Septentrionali.



Purpurea

Anas viridi purpurea, abdomine
pallide pallide purpureo tenuissime
nigro striato, pedibus luteis.

Rostrum purpurascens. Caput, Collum,
Pectus & Dorsi antica pars purpurea;
posterior pars dorsi viridi-violacea. —
ut et Cauda quae brevis, truncata.
Ala virides, macula laterali lineae albae
latere circumscripta. Abdomen
pallide purpurascens lineis transversis
numerosis nigris striatum. Pedes
saturate lutei.



Bernicla.

Anser, capite collo pectore nigro
 ventre albo, sicut etiam Genae &
 nucha. Regimibus fuscis, Dorsis &
 & alis cineris nigro & albo transver-
 -sale striatis.

The Bernacle.

Note. This Goose is by Linnaeus con-
 -founded with the Brent Goose
 tho a very different bird.
 it is better described by Will. orn. p. 359.

Bernilla

A tree, capite albo pedunculato
virescente albo, in fructu
virescente. Repens in frons, vix
in alio numero vixit. In frons
vixit. Bernilla.

Tree, Bernilla.

Note: this tree is in frons
- frons in the frons.
The very different tree
it is frons in the frons.

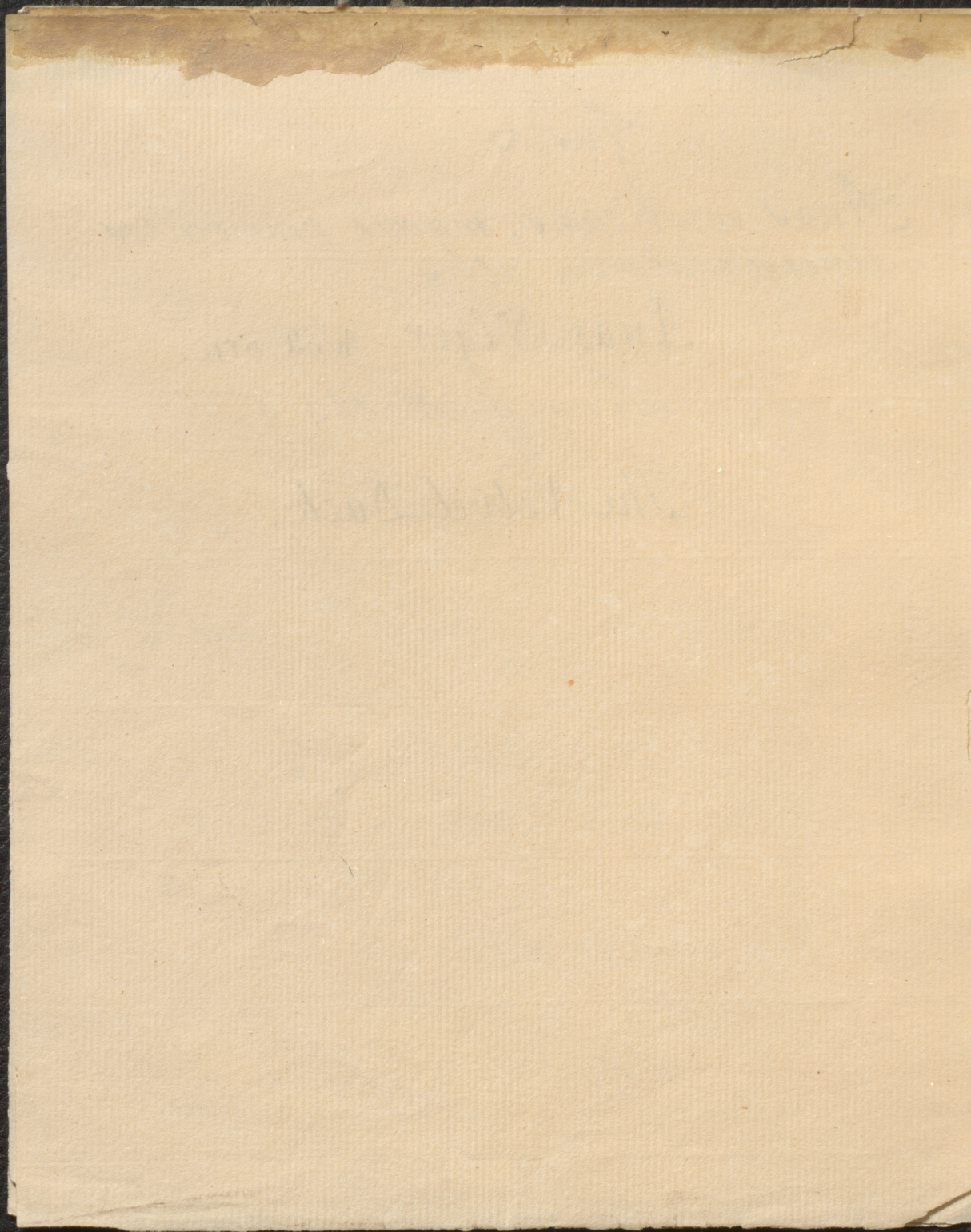
Fusca

Anas nigricans, macula pone oculos
lineaque alarum albis.

Anas Niger. Will. orn.

Linn - S - N. 123. 5

The Velvet Duck.



Tadorna.

*Anas. rostro sinuo, fronte compresso,
corpore albo variegato. L. J. N. p. 122
Habitat in Europa maritimis*

The
Shell Drake, or
Burrough Duck.

Johann

Kabinet in Europa
Kabinet in Europa
Kabinet in Europa

1788
1788
1788

Fuligula

*Anas. crista dependente, corpore
nigro, ventre maculæque alarum
albis*

L. S. N. p. 120

Habitat in Europæ maritimis

The Black Crested

Duck.

1841

of the

the

the

the

the

The

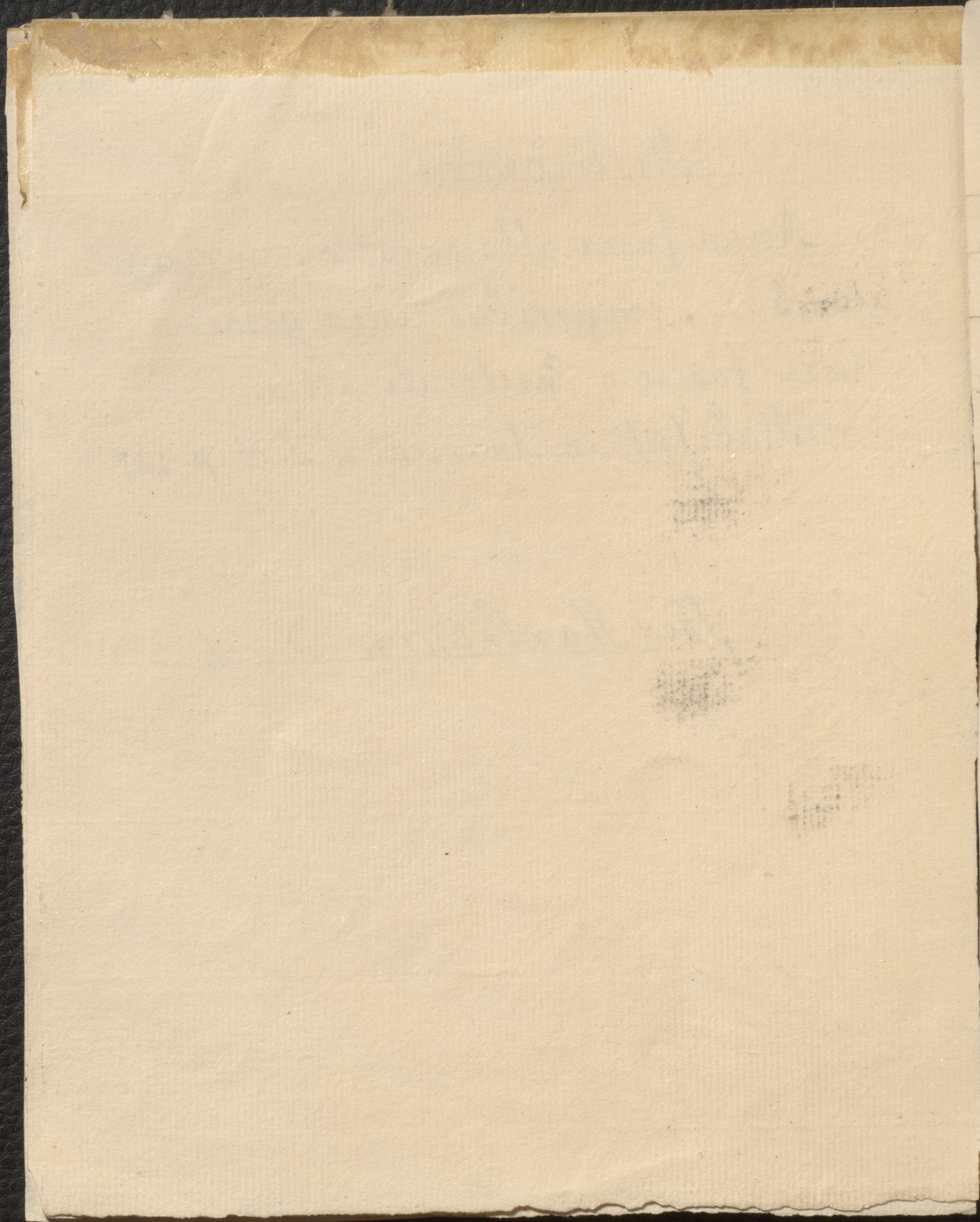
of

Austrionica

30 *Anas fusca* albo, caeruleoq; varia;
auribus, Temporibus linea gemina,
colari fasciâq; pectorali albis.

Habitat in America. L.S.M p. 127

The Harlequin Duck



Minuta

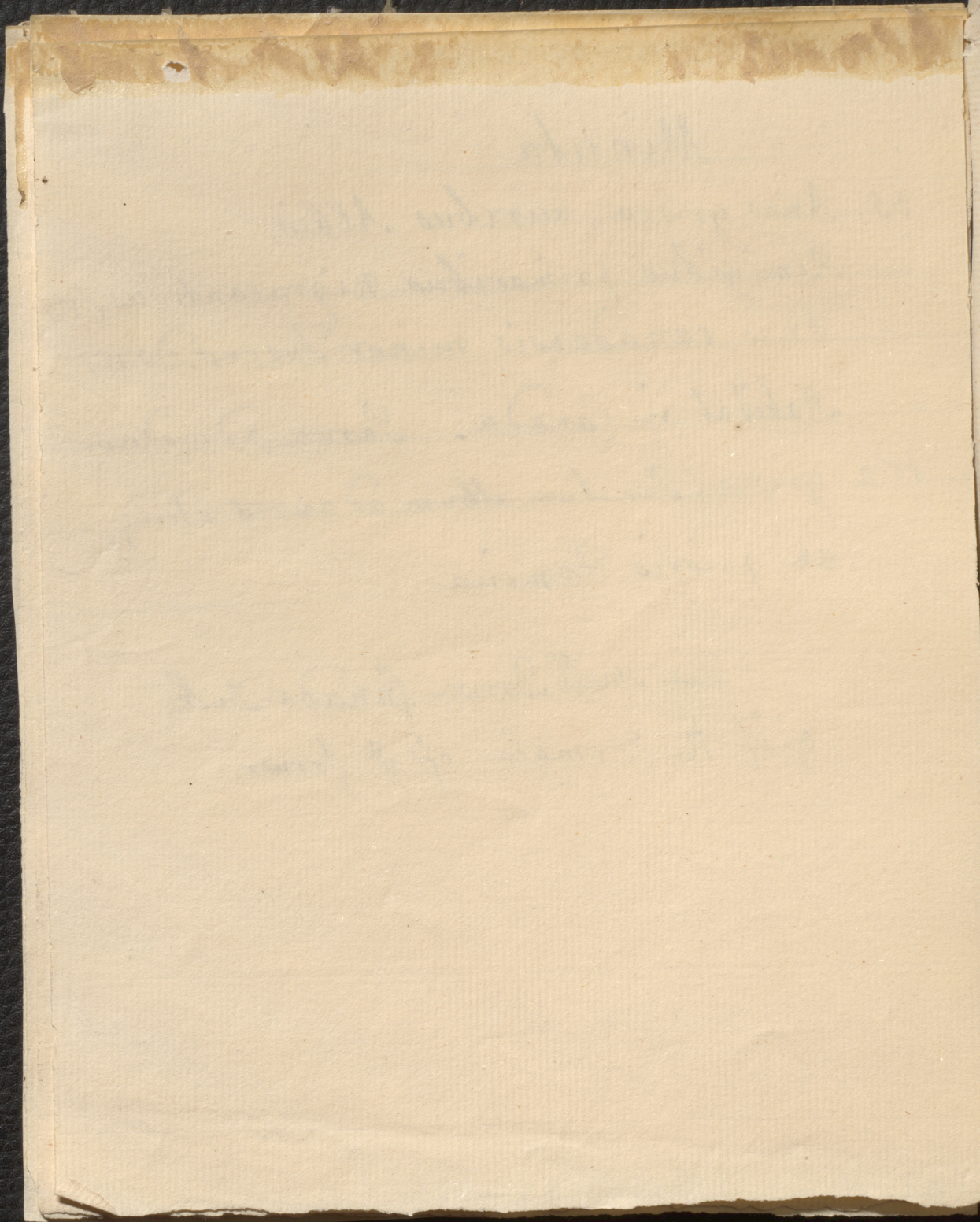
35. *Anas grisea*, auribus Albis,
Remigibus primoribus nigraeantibus. L. 129

Anas canadensis minor Fuscus. D. 157

Habitat in Canada. Larva admodum

tota grisea. Punctum album ad aures utriusq.
an prioris Femina

The small Brown Canada Duck
q. if the Female of y former



Albeola

15 *Anas alba*, dorso remigibusque
nigris, capite caeruleo, occipite
albo. L. S. N. 124.

Habitat in America

The Little Black & White Duck

Edw. p. 100

Albion

Albion, Ohio, 1854

Dear Mother

Oct. 10. 1854

Received of Mother

The sum of \$100

Yours affectionately

100

Arborea

*Anas. grisea, capite subcristato,
abdomine albo nigroq₃ maculato.*

L. N. Sp. 120

habitat in America

1840

My dear Sir

I have the honor to acknowledge the receipt of your letter of the 17th inst.

and in reply to inform you that

the same has been forwarded to the proper authorities.

Sponsa

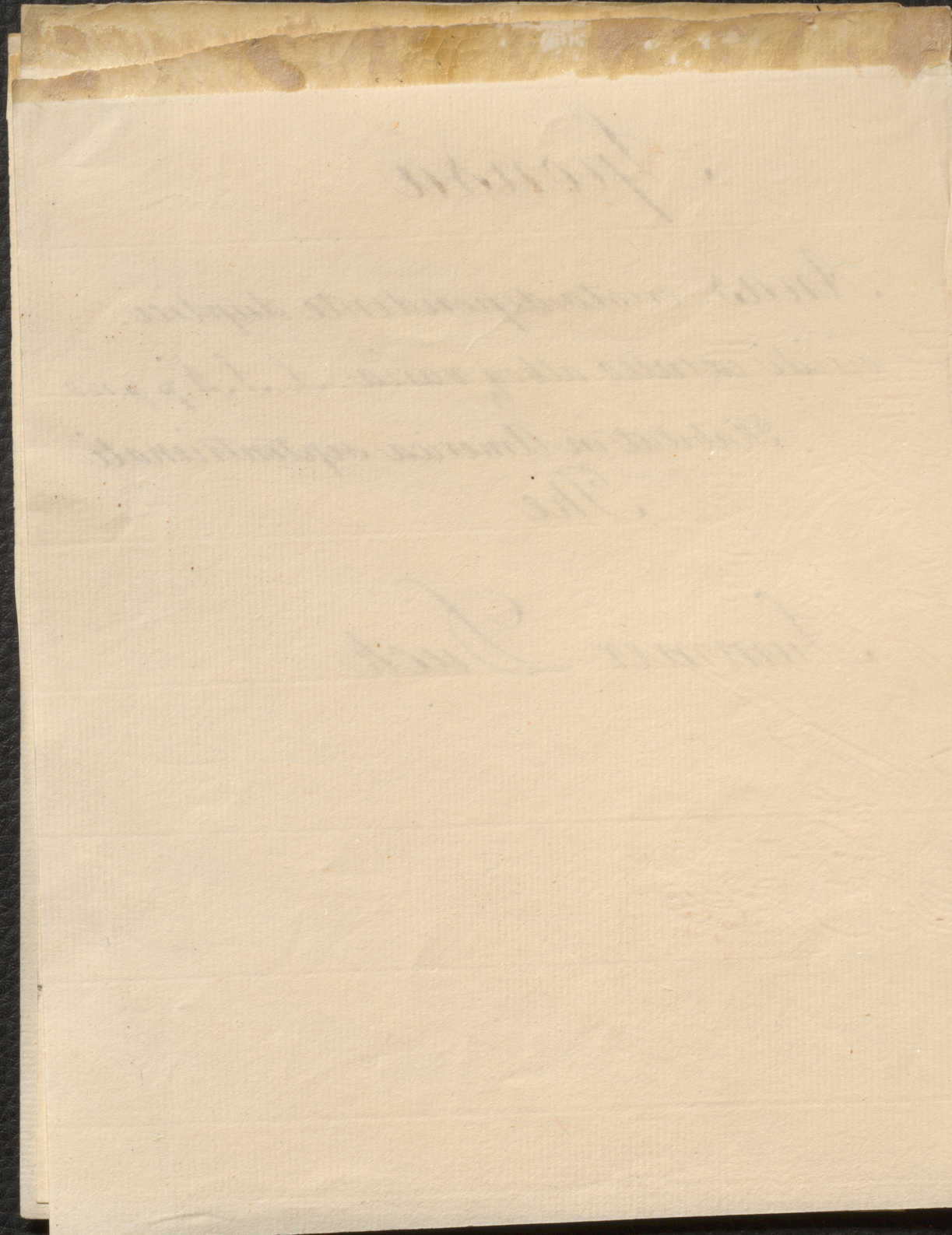
Anas. crista dependente duplici.

viridi caeruleo alboq; varia. L. S. N. p. p. 120

Habitat in America septentrionali

The

Summer Duck



Clangula

*Anus. albo nigroq₃ varia, capite tumido
nigro. viridi sinu oris macula alba.*

L. S. N. p. 126

habitat in Europa saepius maritima

The
Golden Eyes

Chippewa

First the spring was spotted
with white snow and
the water was clear.

1. 1. 1.

Water in the spring was
clear and cold.

The

Water was
clear and cold.

Clypeata.

Anas rostro extremo dilato
rotundato, ungue incurvo. L.N.S. p. 129

Anas. ^{altera} Platyrhynchos. Worn p.

The Shoveler

Chlorophyll

Chlorophyll is a green pigment
found in plants and algae. It is
responsible for photosynthesis, the
process by which plants convert
light energy into chemical energy.

The structure

900

Clypeata

Anas Clypeata Femina.

The Female
of the Shoveler

Clippings

from Clippings. Review.

of the
of the

Boschas

Anas reatricibus intermediis

(maris) recurvatis, rostro recto.

L. L. N. p. 527. Will. orn. p. 371.

Habitat in Europa lacubus; & mansueta.

The Common Wild Mallard

Proctor

It was published in 1841.

It was written by Proctor.

It was published in 1841.

It was written by Proctor.

The name of the book is

Boschas

Anas. reatricibus intermediis maris)
recurvatis, rostro recto. L. I. N. p. 127

Habitat in Europa lacubus &
Mansueta. L. N. S. p. 371

The Wild Duck

1841

Received of the
Hon. Secy of the
Treasury the sum of
\$1000

The Bill Book

904
Anas latirostris.

Brunnich Ornith.

the left Duck

1861

...

...

...

...

...

...

...

Acuta

*Anas, cauda acuminata elongata
subtus nigra, occipite utriusque linea
alba. L. S. N. p. 126*

The

Sea Pheasant

Faint, illegible handwriting, possibly bleed-through from the reverse side of the page. The text is mirrored and difficult to decipher.

Strepera

Anas macula alarum ruffa
nigra alba. L.S.N. p. 125. W. 374.

The Godwall
or Grey

Chippewa

I have made a list of the
names of the people.

The names
of the people

Strepera

Anas Strepera Famina

*The Female Godwall
or Grey*

Utrecht

Van der Meer

de Groot

1795

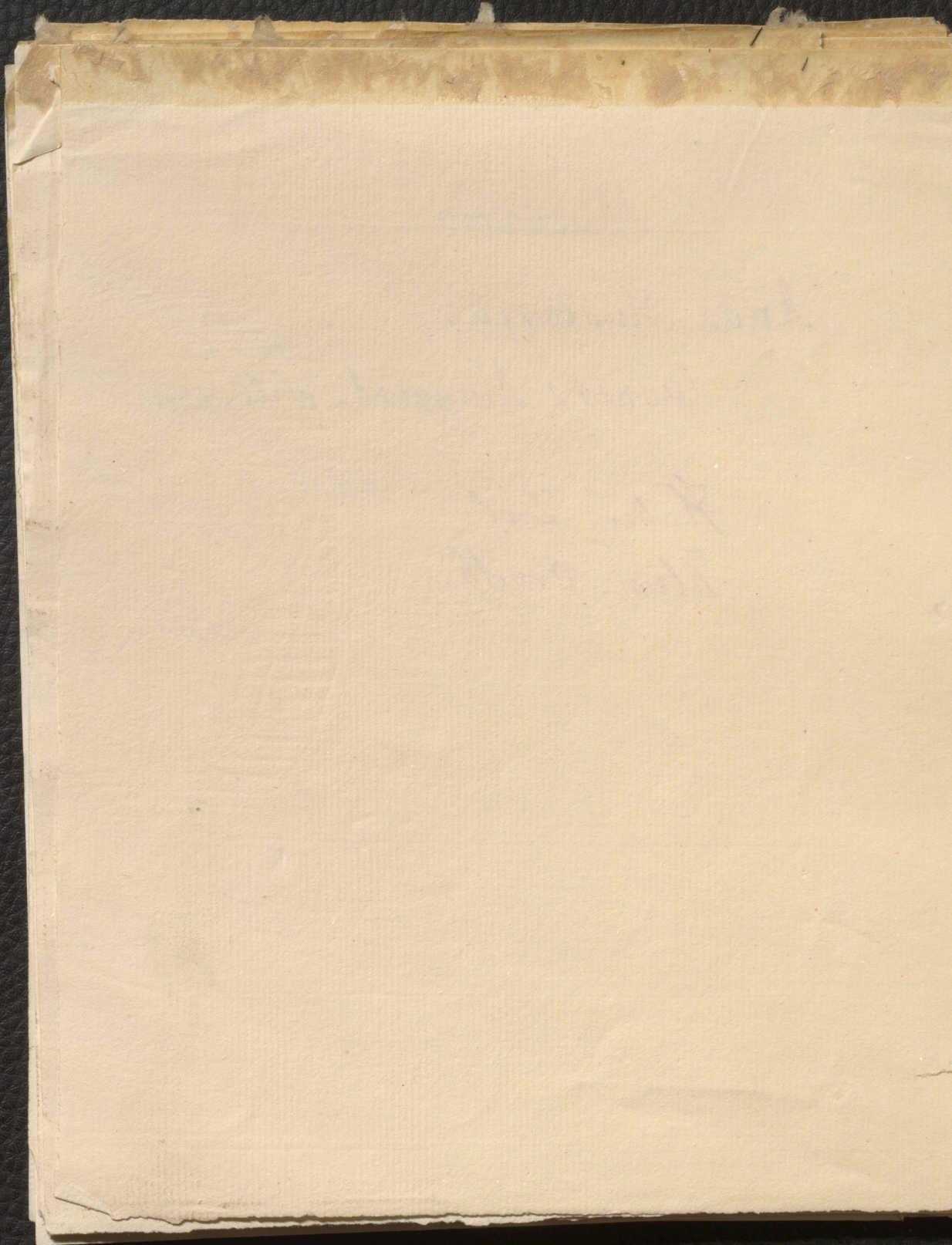
Muscaria

Anas Muscaria.

Gesners Muggent. Will. 375

Haller. Zool.

Klein. Ornith.



909

Moschata

Anas fascie nuda papillosa.

L. S. N. p. 124

Habitat in India.

The Muscovy Duck.

Teacher

has four more papers

to copy

about in 1810

The history book

Moschata

Anas fasciata nuda papullosa
femina. L. S. N. p. 124

Habitat in India

The Muscovy Duck

Mr. [illegible]

[illegible]
[illegible]
[illegible]

Mr. [illegible]

Penelope

Anus. cauda acutiuscula subtus

nigra capite brunneo fronte Alba

L. N. S. p. 126

habitat in Europa Maritimis et
paludibus

The

Red headed Wigeon

[Faint, illegible handwriting, likely bleed-through from the reverse side of the page.]

Crecca

Anas, macula alarum Viridi
 Linea Alba supra, infra₃ oculos
 L.S.N. p. 126.

Querquedula secunda minor W: p. 377

Habitat in Europa aquis dulcibus

The Teal

1871

Handwritten text, likely bleed-through from the reverse side of the page. The text is faint and difficult to decipher but appears to be organized into several lines or paragraphs.

*Querquedula**Anas macularia alarum viridi**linea alba supra Oculos. L.S. N. p. 126**Habitat in Europa aquis dulcibus**The Garganey**Will. orn. p. 377.*

[Faint, illegible handwriting, likely bleed-through from the reverse side of the page.]

[Faint, illegible handwriting, likely bleed-through from the reverse side of the page.]

916

Acuta.
Femina

The Female of the
Sea Pheasant.

Number
100
The Journal of
the [unclear]