

110

107

86

MAMMALIA FERÆ Felis

Maculatus

Felis cauda elongata fersa
antecedentis femina.

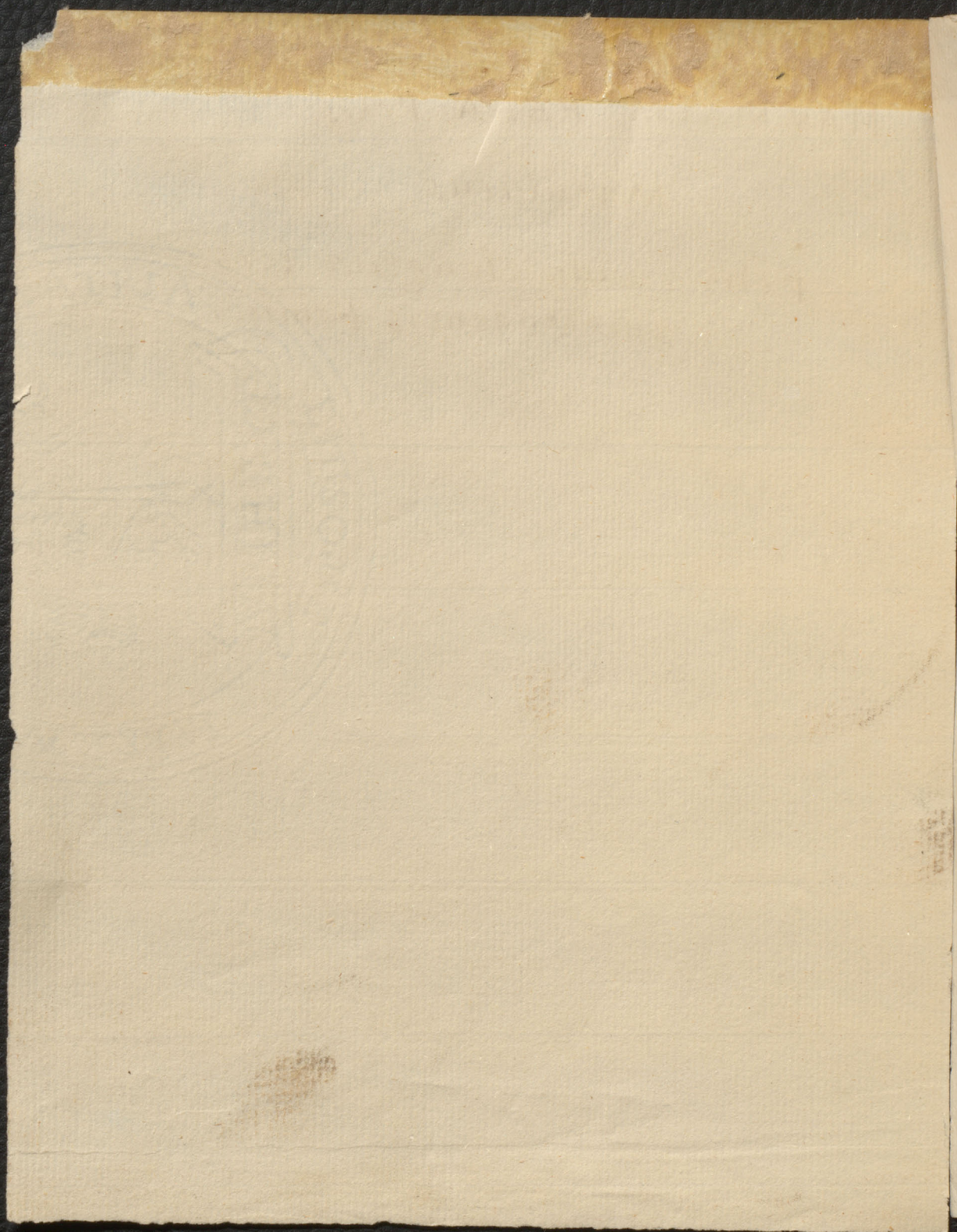
is

co

174

m

ce,



110

107

MAMMALIA FERÆ Felis

88

87

CATUS TURKICUS.

Felis Domesticus pilis longissimis

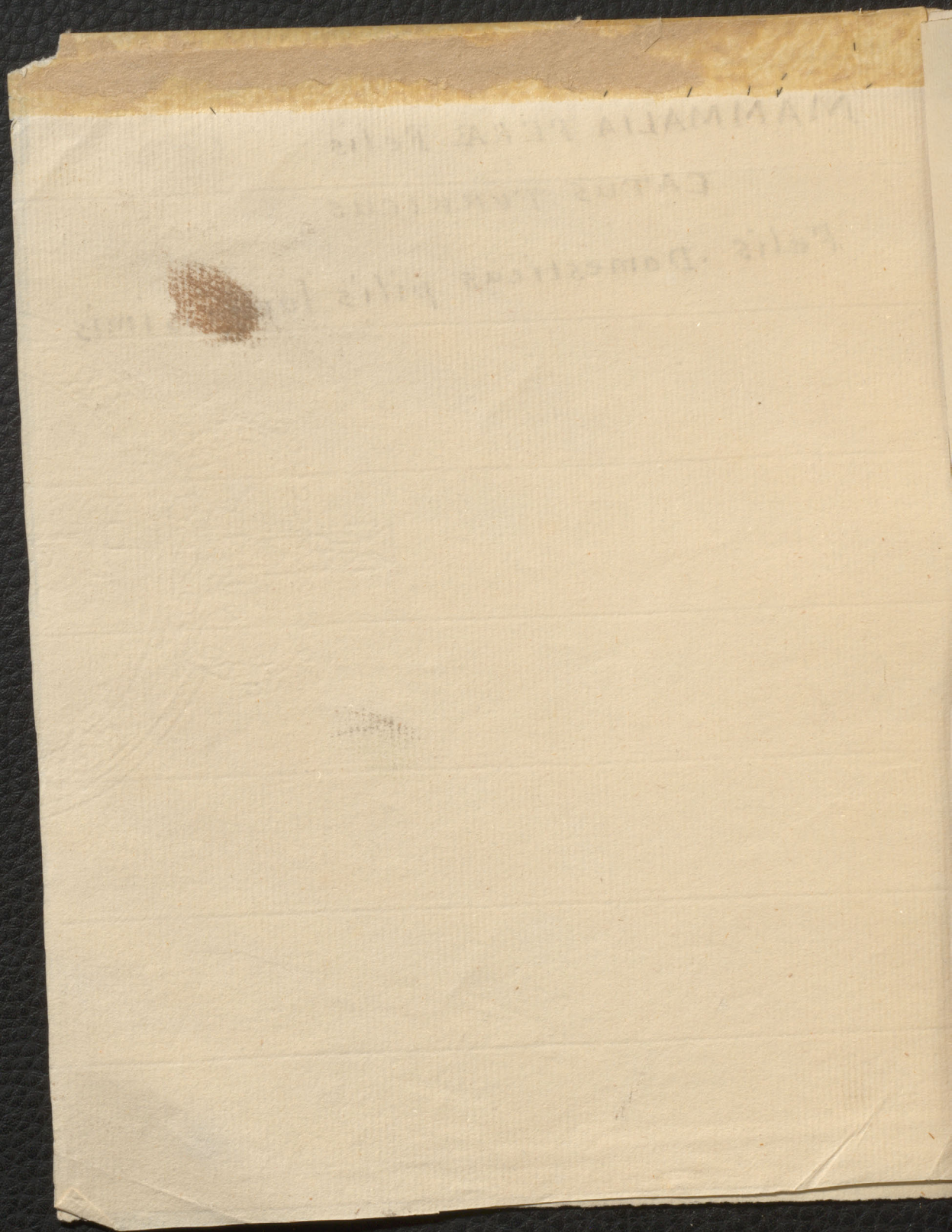
is

co

174

m

ce,



MAMMALIA VERA FELIS

CATUS DOMESTICUS

Felis Domesticus Felis

110

107

88

MAMMALIA FERÆ Felis

Sylvestris.

Felis. Cauda brevis.

colore Griseo, striato
Facie palidior auribus
ore & anulis Oculorum
Albidis. sed colore difert

Habitat Angliæ sylvis

The Wild Cat

is

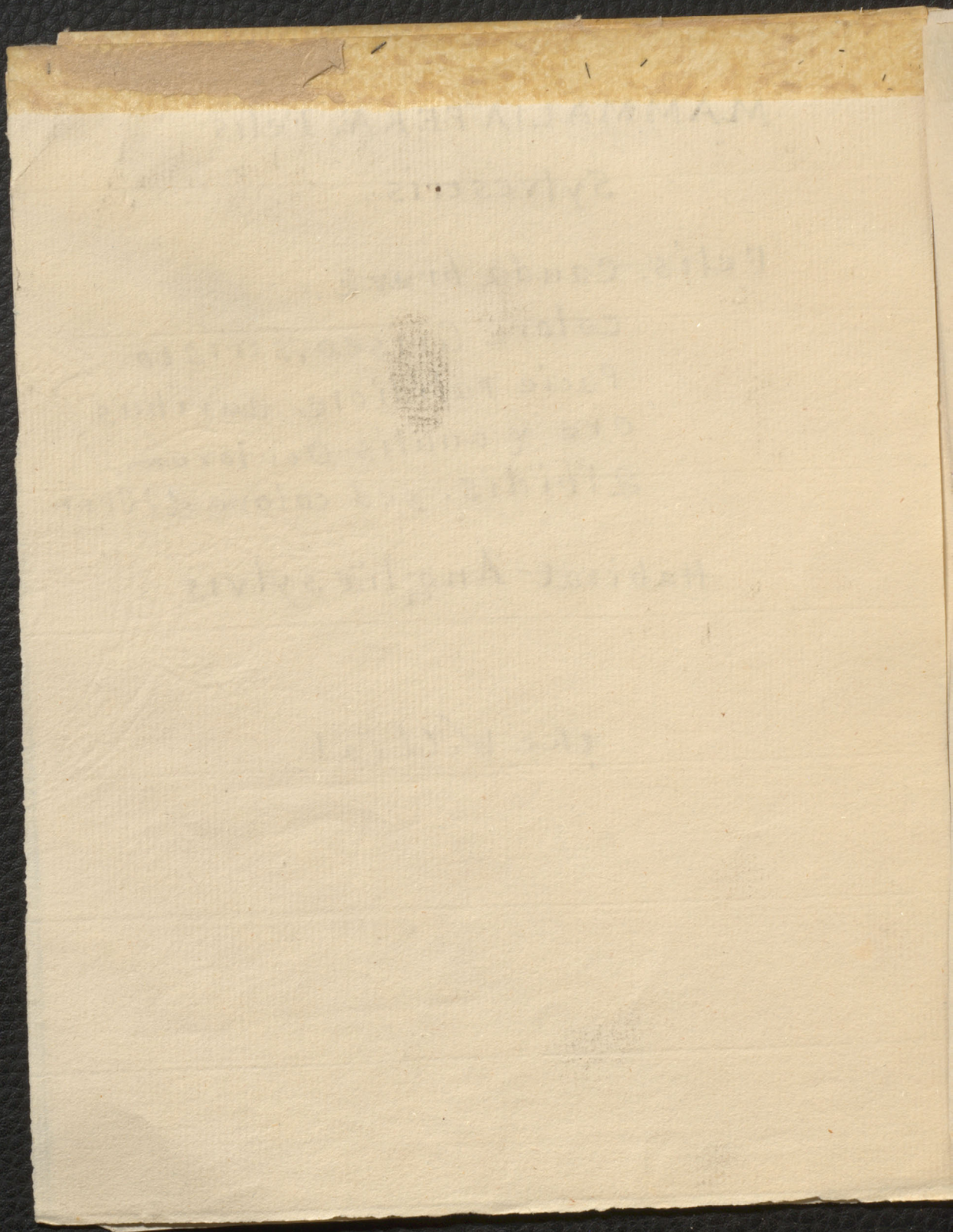
co

174

e

m

re.



110

107

89

MAMMALIA FERÆ, Felis

CATUS.

SHEA GOEST

FELIS AURIBUS Pencillatis, externe
nigris. interne albis.

colore flavescente. Ore albo

CAUDA tenuissima femora
longitudine equalis,

habitat India Orientalis,

The Shea goest.

is

co

174

m

re,

[The page contains several lines of extremely faint, illegible text, likely bleed-through from the reverse side. The text is mirrored and cannot be accurately transcribed.]

110
107
90
MAMMALIA FERÆ Felis

LYNX.

FELIS cauda abbreviata; apice atra
Auriculis apice barbatis. Faun.
Sues. 10

174
felis cauda truncata, colore rufescente
maculato. faun. Sues. n. 4. It. Wgth 222

Lynx cervarius Gesn. quad. 577.

Tourn. It. 2. p. 165

Lynx Aldrov. Dig. 90. Inst. quad.

82 & 71. Raii Quad. 166.

habitat in Europa & Canada sylvis,
& desertis. arbores inhabitat;
mortes venatur, vivitat de poribus.
lepis ovibus. aspiciendo sonem
globo efoditur. L. N. p. 13. nov. ed
ubi v. descriptio

The Lynx

17th Nov.

1873

Dear Mother

I have just received your letter of the 14th and was glad to hear from you. I am well and hope these few lines will find you the same. I have not much news to write at present. I am still in the same place and doing the same work. I have not seen any of the old friends here. I have not time to write you more than a few lines at present. I must close for this time. Write soon. I am your affectionate son

John Smith

110

107

12

91

MAMMALIA FERÆ. Felis

CATUS AFRICANUS

~~C~~ Felis caudæ abbreviata auribus
Pencilatis. colore fusco.

Habitat in Africa

The African Cat

from his Majesty's Collection in the
Tower of London

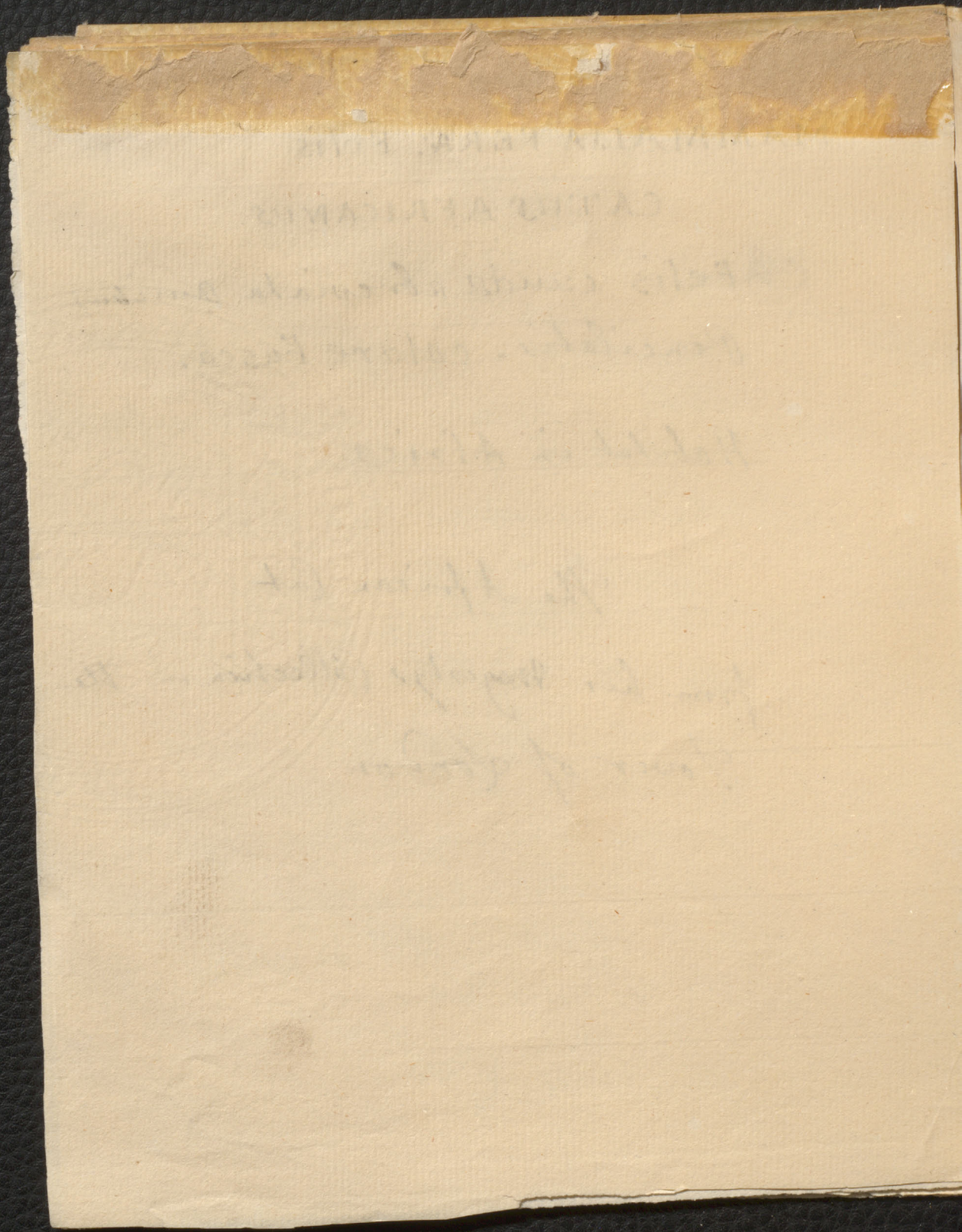
is

co

174

m

re.



110

107

MAMMALIA FERÆ Felis

CATUS TIGRIS

Felis Cauda truncata.

colore fusco nigro striato.

Habitat Polonia.

is

co

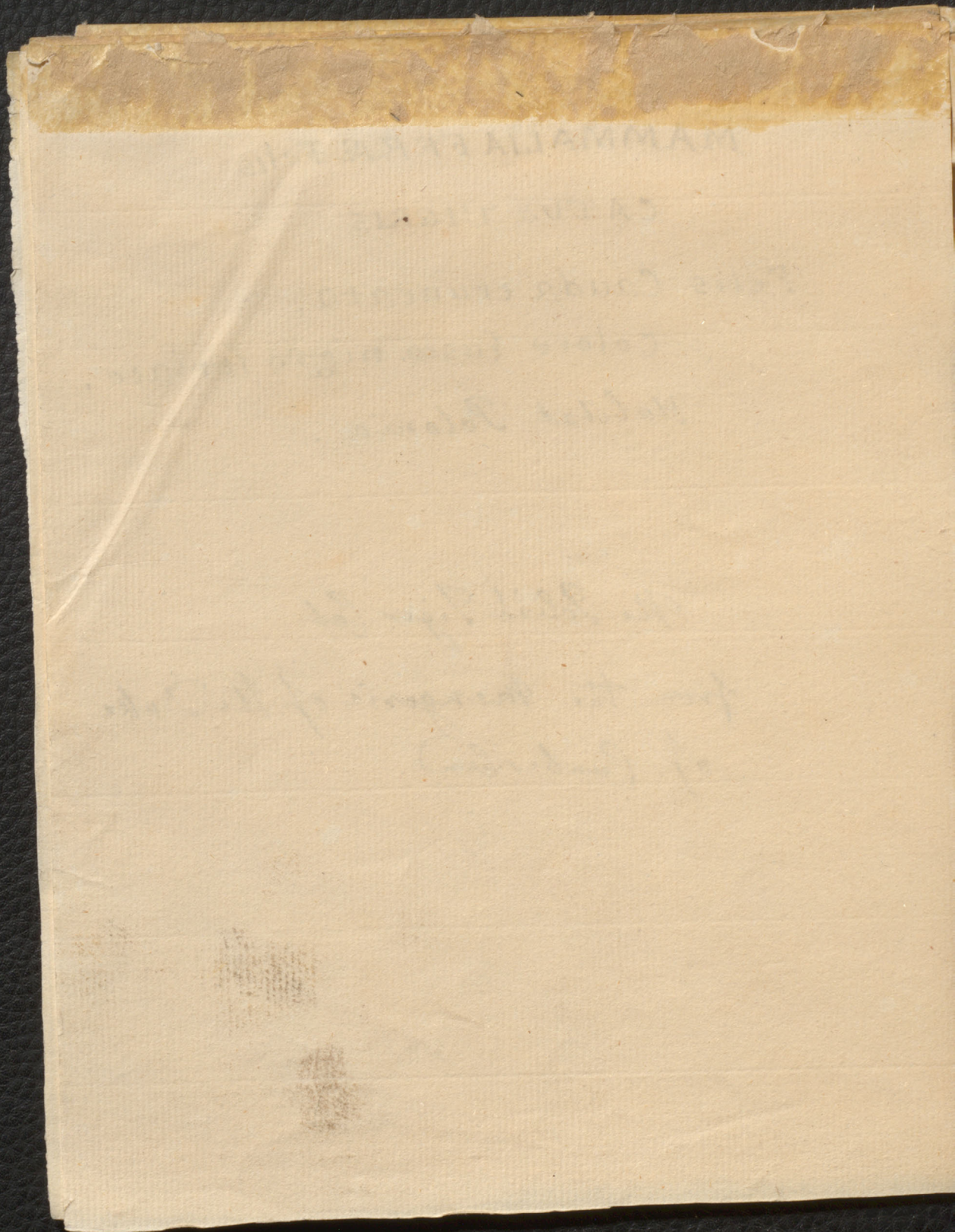
174

m

ce,

The Polish Tiger Cat

from the Menagerie of the Duke
of Cumberland.



MAMMALIA FERÆ VIVERRA 93

14- VIVERRA Dentes Primores VI intermediis

brevioribus

Molares plures quam tres.

Lingua retrorsum saepe aculeata

ungues exserti.

Species Linnæi sunt 6.

1. Ichneumon.

2. Mustela Glauca

3. Noma

4. Putorius

5. Libetha

6. Genetta.

MAMMALIA FERÆ VIVERRA

ICHNEUMON.

MUSTELA GLAUCA

amurata p. 109

Mustela Viverra indis Mangutha Kempf. amoa.

574. t. 576

Quil s. quirpele Cor. avom. 162

Serpentula s. Muncos Rumpf. herb. 7. p. 69

t. 28 f. 2. 3.

Ichneumon Indicus Edw av. 199. t. 199.

Ichneumon s. Vulpecula Zellanica Seb. mus 1. p. 66

t. 41. f. 1.

Habita in Agypto ad Ripas Nili. et
 in India primario. mansuescit; more Canis
 victitat Amphibis, serpentibus, Lacertis.
 Ovis Crocodili; Ranis Gallinis, muribus.
 Serpentum Hostis, morsus a serpente
 ophiorhizon apernit; reperit et prozilis ad
 predam; a vento reformidat; mundum animal
 latum saepe trucidat.

Description

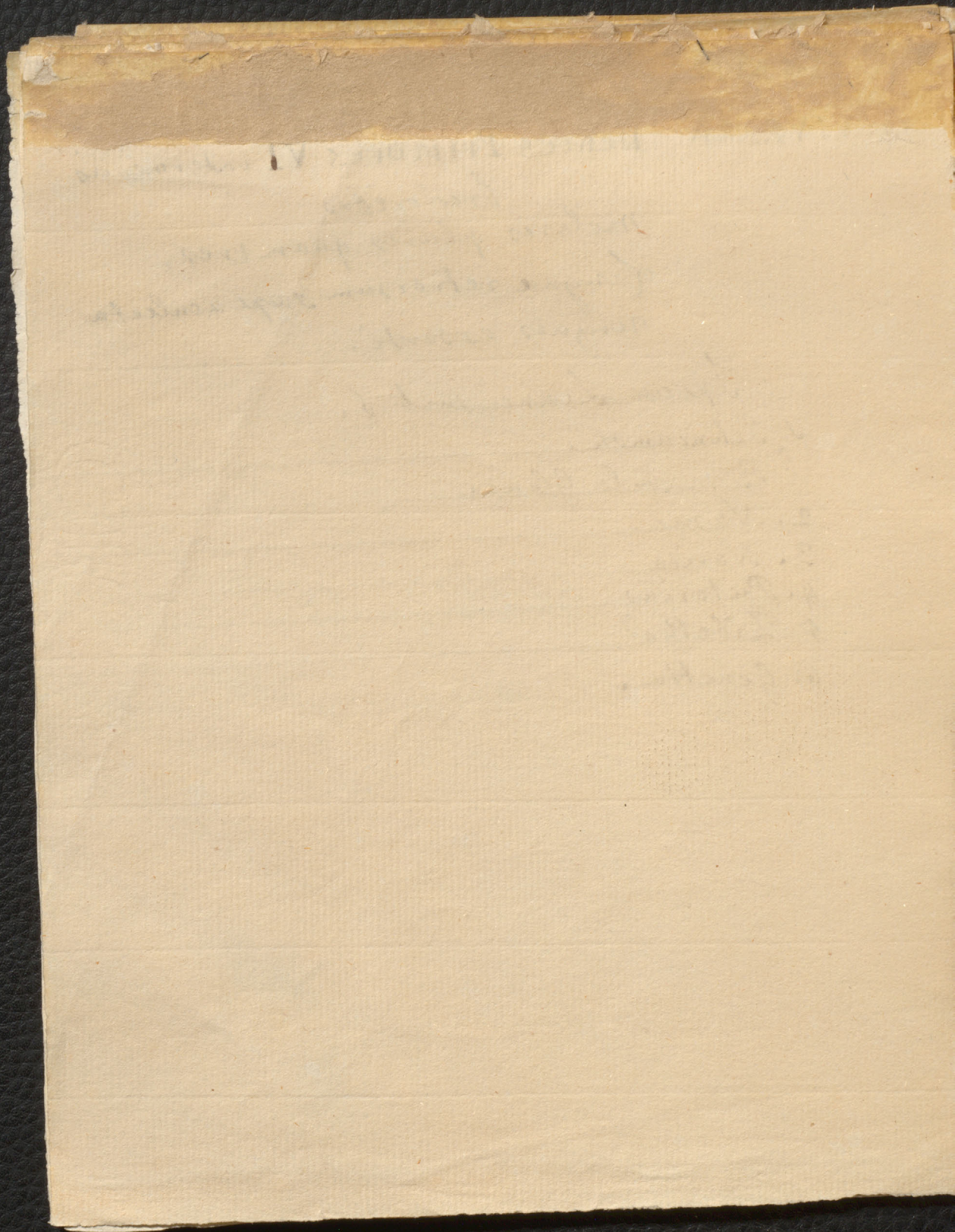
is

co

174

m

ce,



93
Descriptio

Frons plana. Labium superius prominens.
Auriculae rotundae. Mustacae simplici serie
in omnibus labiis lateralibus ad marginem
Lingua scabra. Pollex a reliquis distinctus
Cauda basi crassa sensim attenuata, longitudine
corporis folliculus ante aperturam anis, sub
aestu apertus. Pili albi et griseo nigrescente
verticillati. Magnitudo cati; calcanei
micidit.

The Ichneumon
or
Mongos.

~~MAMMALIA FERAE VIVERRA~~

93

MAMMALIA FERAE VIVERRA

es

ICHNEUMON

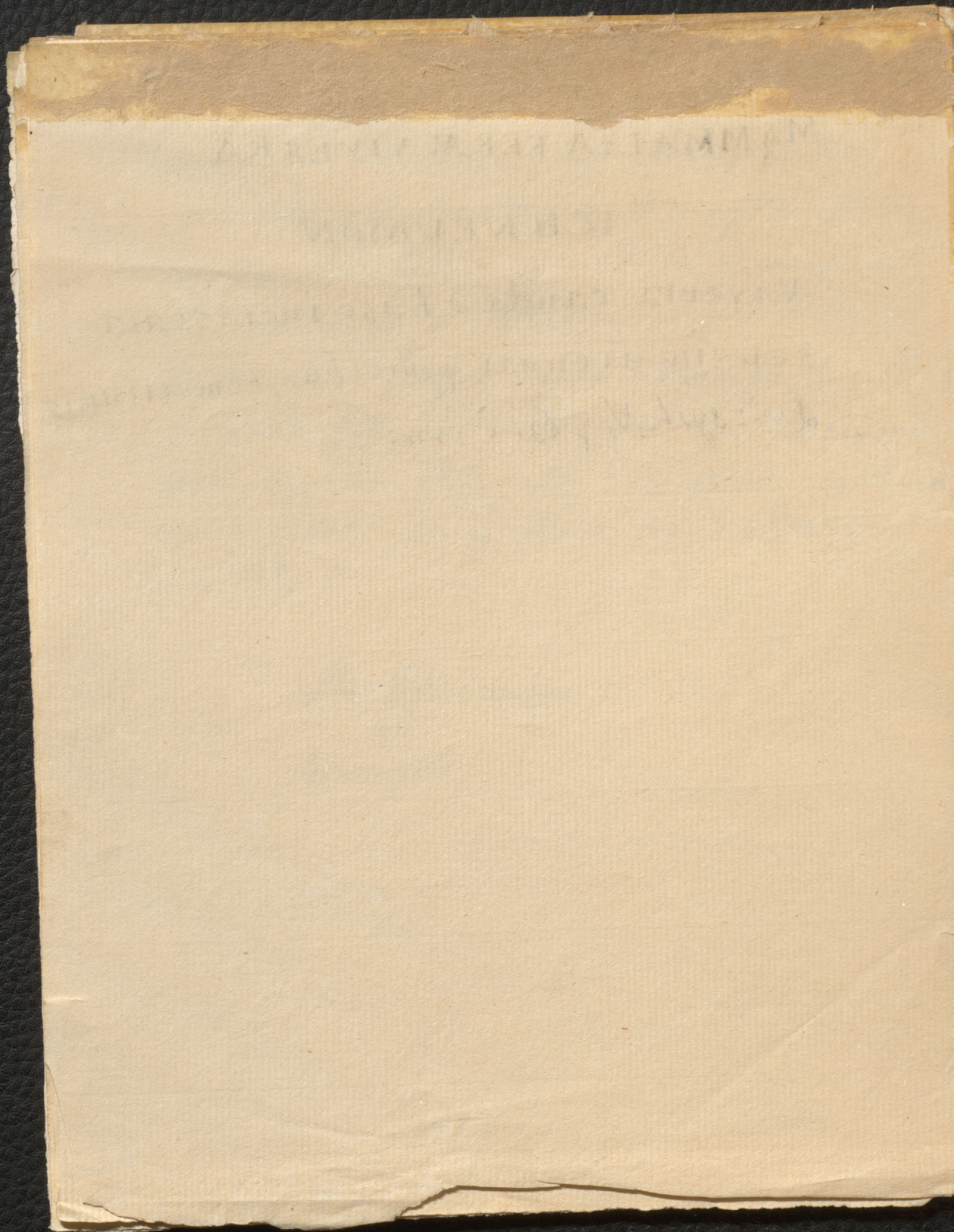
co

174

Viverra cauda e basi incrassata
sensim attenuat. pollicibus, remotissimis
Linn: syst. N. p 63. ed. nov.

m

er.



~~MAMMALIA FERAE AMERICA~~

95
95

MAMMALIA FERAE VIVERRA

3. NARICA. Z. S. N. 64.

V. fufusca, cauda concolore.

Ursus naso producto & mobile, cauda

unicolore Brisson. quad. 262

habitat in America.

is

co

174

m

ce,

MAMMALIA FERÆ URSUS

URSUS cauda longissima nigra

110

107

~~MAMMALIA FERAE Mammalia~~

MAMMALIA FERAE, VIVERRA

98

ZIBETHA

5. VIVERRA cauda anulato, dorso cinereo
nigroq₃ undecim striato.

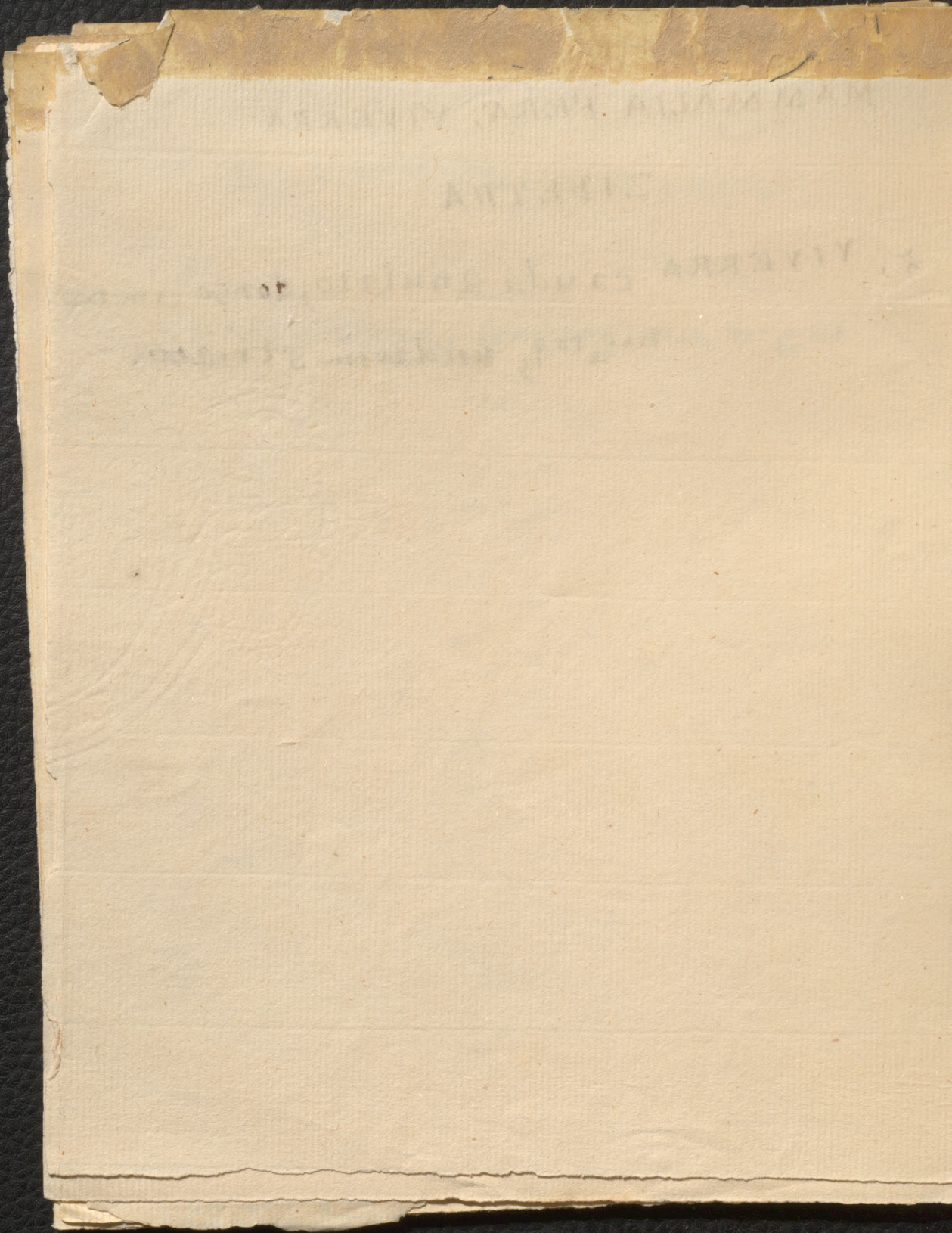
es

co

174

m

ce,



~~MAMMALIA FERAE Mammalia~~

MAMMALIA FERAE VIVERRA

ZIBETHA MACULATA

ZIBETHA cauda longissima
annulata. magnitudo minor
quam precedente colore abido
nigro maculato sed facie collo &
dorso striato

Habitat in Morocco ut opinor

This was a present from the
Emperor of Morocco to K. G. J. 2.
I know not by what name he
was called.

is

co

174

m

es.

ATMOSPHERIC PRESSURE

TEMPERATURE

WIND DIRECTION AND FORCE

MOISTURE

STATE OF SKY

TIME OF DAY

DATE

PLACE

NAME OF OBSERVER

NO. OF OBSERVATION

REMARKS

TIME

~~MAMMALIA FERAE~~ Mustela

103

93

MAMMALIA FERAE MUSTELA

10

10

MUSTELA

174

Dentes Primores, superiores VI
erecti, acutiores distincti.
Inferiores VI, obtusiores
conferti; duo interiore

m

es.

Lingua Levis

Species

- 1 Lutris The marine Otter
- 2 Lutra - - - - - The Otter
- 3 Lutreola The Small Otter
- 4 Barbara The black Indian Ferret
- 5 Gulo - - - - - The Polecat
- 6 Martes - - - - - The Martin
- 7 Putorius - - - - - The Polecat
- 8 Furo - - - - - The Ferret
- 9 Zibelinea - - - - - The Sable
- 10. Erminea - - - - - The Ermin
- 11. Nivalis - - - - - The White Weagle

MAMMALIA FERÆ ~~VIVERRA~~

MUSTÉLA

~~MUSTELIA FERÆ~~ Mustela

MUSTELIA FERÆ, MUSTELA

4 BABARA

MUSTELA Pedibus fissis, atra,
collo subtus macula alba triloba.
Lyn. Syst. nat. 67.

is

co

174

Galera. Brown. jun. 485. t. 49 f. 1.

m

Habitat in Brasilia.

es.

Corpus statura Martis, nigrum
pilis rigioribus, Auricula rotunda
villosa. Area cinerescens ante oculos.
macula sub medio collo, non sub gula
albida. mammae 4. pone umbilicum.

The Black Indian Ferret

A. BARA
M. T. R. A. P. R. O. P. T. I. S. S. I. S. S. I. S.
C. O. L. L. E. G. I. U. M. M. A. G. I. S. T. R. I. C. I. U. M.
P. A. R. I. S. I. S. S. I. S. S. I. S. S. I. S. S. I. S.
L. I. B. R. A. R. I. A. M. A. G. I. S. T. R. I. C. I. U. M.
P. A. R. I. S. I. S. S. I. S. S. I. S. S. I. S. S. I. S. S. I. S.
L. I. B. R. A. R. I. A. M. A. G. I. S. T. R. I. C. I. U. M.
P. A. R. I. S. I. S. S. I. S. S. I. S. S. I. S. S. I. S. S. I. S.
L. I. B. R. A. R. I. A. M. A. G. I. S. T. R. I. C. I. U. M.
P. A. R. I. S. I. S. S. I. S. S. I. S. S. I. S. S. I. S. S. I. S.

110

107

~~MAMMALIA FERAE~~ Mustela

104

MAMMALIA FERAE, VIVERRA

MUSTELA

7. PUTORIUS

mustela. pedibus fissis. corpore
flavo nigrescente, ore auriculis
albis. f. sues. 16.

is

co

174

m

es.

The Poulcat.

110

107

105

~~QUADRUPEDES FERÆ Mustela~~

QUADRUPEDES FERÆ Mustela

14. MUSTELA

g. FURRO

g. M. plantis fissis, oculis rubicundis.
Mustela sylvestris Viverra dicta Raj. quad. 193
Habitat in Africa

Putorio minor; Auriculae erectae patulae
breves, oculi rubicundi Raii Len: J. N. p 46

The Ferret.

is
co

174

m
ae.

MAMMALS DEPT. V. 1874

M. 1874

1874

1874

1874

1874

1874

GUARDRIEDEL REKA MISCIA
M. D. S. T. E. L. A.

2. P. 170

[Faint, illegible handwriting]

110

107

QUADRUPEDES FERÆ. Mustela

106

14 MUSTELA

bus

10 Erminea.

100

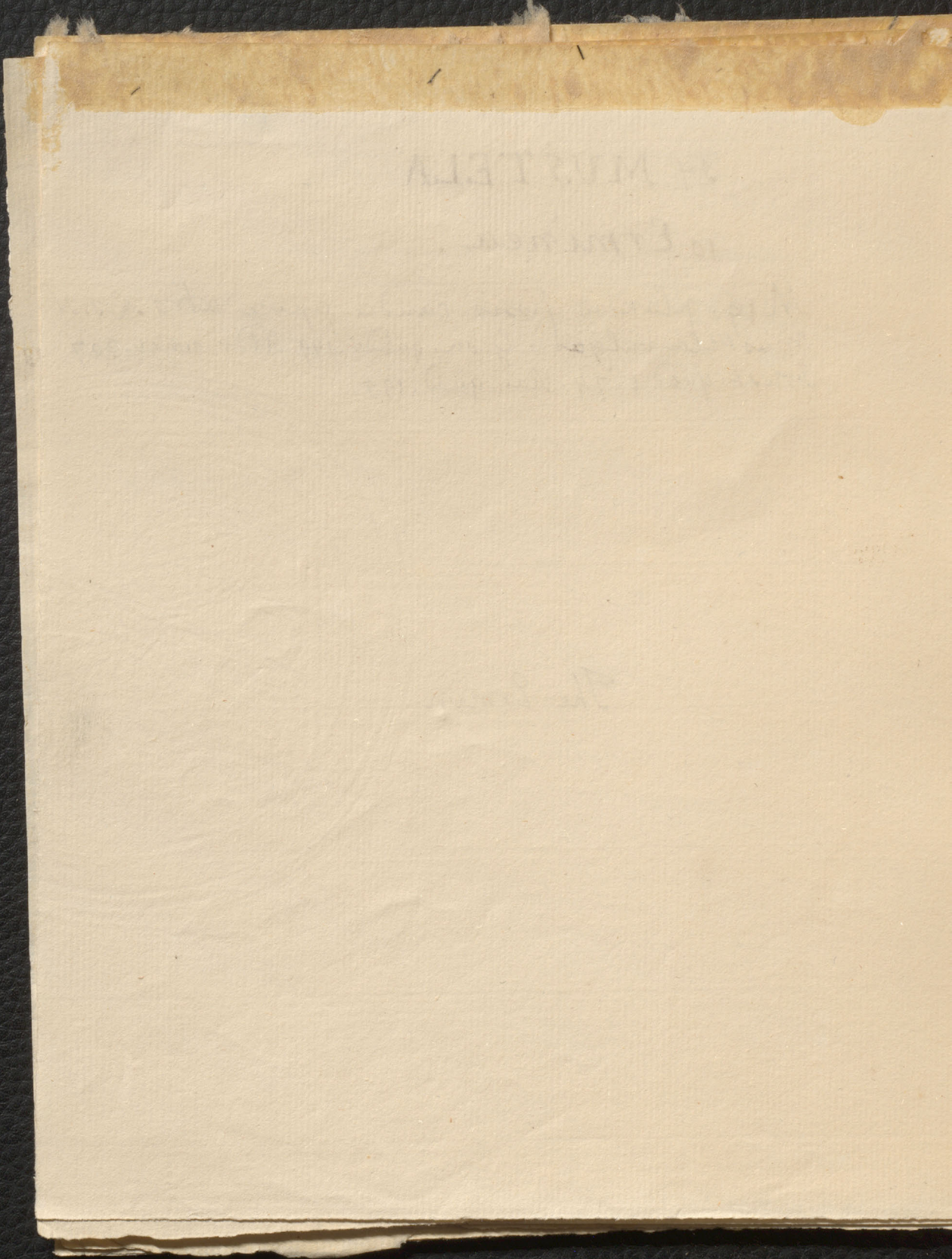
M 19. plantis fissis caudæ apice atro. L. S. N.
Mustela vulgaris Gesn. quadr. 149 Aldr. ungu. 307
Jonsl. quadr. t. 74. Rai. quadr. 195.

174

in

me.

The Ermin.



QUADRUPEDES FERÆ Mustela

MUSTELA LUTREOLA

Mustela auribus rotundis albidis Pedibus
Pentadactylis palmatis corpore fusco
cauda vilosa nigrescente. Pennant quadr. 174

Habitat in America.

This Beast is in the British museum
he is called in French Fourtre Amerique.

2 UADRUPTEDS FERRA MURICA

MURICA TURBIDA

Murica murica (L.) is a small, slender, cylindrical shell, often found in the same places as Murica turbida. It is very common in the Mediterranean and Atlantic coasts of Europe.

The shell is white, with a faint pinkish or reddish tinge. It is very smooth and has a slightly flattened shape. The aperture is small and is situated at the top of the shell.

MAMMALIA FERAE Talpa, MAMMALIA

IS TALPACID. II

Dentes, Primores superiores VI. inferiores VIII

MAMMALIA FERAE VIVERRA

VIVERRA GENETA.

VIVERRA Cauda anulata, corpore
fulvo-nigrocante maculato

Belon: it. 76. yerm quad. 550
Aldrov. 337 t 339. Johrst quad. t 72

Raii quadr. 207. Briss. quad. 252

Habitat in Oriente juxta rivos.

Hispania mansuetis ut felis.

Olet Moschum,

LAABRUTTES FARRA

[Blurred text, possibly a header or title]

8 DE 1971

VIVIANA

[Blurred text]

[Blurred text]

[Blurred text]

[Blurred text]

[Blurred text]

[Blurred text]

[Blurred text]

MAMMALIA FERR. Talpa, MAMMAM

IS TALPA ID. FI

Dentes, Primores superiores VI. inferiores VIII

Dentes Canarii major I. minores IV.

Species Linnei. 2.

1. Europæa

2. Asiatica.

MOLARES VI. VI. primo lanant

Lingua Lævis.

MEMBRANA Nicotiana. Nasus prominens.

Species Linnei sunt

1. Arctos

2. Mefes

3. Lotar

4. Luscus

MAMMALIA FERA, DIDELPHIS MAMMAM

17. DIDELPHIS 81

Deless, *Trinacris*, *species Linnei*, VIII

~~Linnaeus, *Trinacris*, *species Linnei*, VIII~~

~~*species Linnei*~~

1 *Europaea*
2 *Australis*

113
MAMMALIA. FERÆ. URSUS

16 URSUS L.S.N. p. 69.

Dentes primores superiores VI. intus excavati alterni
inferiores VI. laterales 2 longiores lobati
secundarii basi interiores.

Canarii solitarii, conici.

MOLARES V. (VI. primo canariis approximato

Lingua Lævis.

MEMBRANA Nicticans. Nasus prominens.

Species Linnei sunt

1. Arctos
2. Meles
3. Lotor
4. Luscus

MAMMALIA. FERR. URUS

DE URUS L.S.V. p. 69.

Dentes primores superiores VI. inferiores VII. laterales a longioribus
inferiores VII. laterales a longioribus
secundaries duos inferiores
Labiis labialis, canini
MOLARES V. VI. primo labialis opposito

Lingua lavis
VERBA NIGRA. Nasus prominens.

Species Linnei sunt

1. Arctos
2. Mors
3. Lator
4. Lascus

112
MAMMALIA FERÆ Erinaceus

111
URSUS.

Arctos

Ursus caudacabrupta. Faun. suec. 2

Ursus Gesn. quadr. 14 Aldr. digit 117 Johnston quadr
t. 55. Dodart. act 67 t 67 Rai quadr 171.

Habitat in sylvis Europæ frigidae.

The comon Brown Bear

MAMMALIA. FERR. UR.

UR.

UR.

UR.

UR.

UR.

112
MAMMALIA FERÆ, Erinaceus

20 ERINACEUS

Dentes. Primores Superiores II distantes.

Lanarii. utrinque 2. recumbentes

Species Lin. 2

1. Europæus.

2. inauris.

3. Malaccensis.

MAMMALIA FERAE ETINAEUS

20 ERINACEUS

Dentes. Inferiores superiores II distincti.

Larvati. superiores 2. recumbentes

Species 2.

1. Europaeus.

2. Asiaticus.

3. Malaccensis.

MAMMALIA FERÆ Sorex

19 SOREX. L.S.N. 73

DENTES Primores superiores II bifidi.

Inferiores IV: intermediis brevioribus

LANARII utrinque plures

Species Lin: 5

1. Cristatus.
2. minutus
3. aquaticus
4. murinus
5. Araneus.

MAMMALIA ERK. 2002

19 2002X. L.A.M. 19

DENTES PRIMARES SUPERIORES II DENT.

Interiores IV: secundum alia secundum

LAVARIE externe externe

Species dentis

1. Cristatus

2. Primitus

3. Squaratus

4. Primitus

5. Primitus

124

113

112

URSUS.

2. Maritimus. *Ursus maritimus* Albus.
Pedibus Palmatis. Habitat Greenlandia.
Ursus maritimus albus major, arcticus. Martens
Spitzb. 73. t. o. f. c.

to,
r
m

The Great White Greenland Bear.

DIAMMATA PERE 2002
19 2002X L.A.M. 19

T. R. 1902

2. Mammalia. Mammalia. Mammalia.
Mammalia. Mammalia. Mammalia.
Mammalia. Mammalia. Mammalia.
Mammalia. Mammalia. Mammalia.

124

113

MAMMALIA FERÆ Ursus

NIGER.

The Black Bear

64

to,

m

m

ra

MAMMALIA ERV. 2002

MAMMALIA ERV. 2002

RIGER

2. 2. 2. 2. 2.

URSUS

Mammalia Fera. Ursus

2 Meles L.S.N p. 69

meles. ursus cauda concolore. corpore supra cinereo, subtus nigra, fasciata longitudinali per oculos auresq. nigra.

Linn. Syst. nat. 48.

meles unguibus anticis longissimis

Forsk. succ. 15. Syst. nat. 6.

meles. gesn. quod. 686.

Taxus Aldr. digit. 264. Forst quod. v. 64

Raii quod. 185

Habitat in Europa inter rimas Scythiarum

& Labidum

The Badger.

analis nigra ornata

habitat in America montana

The Raccoon

to,

m

MAMMALIA ERK. 2072

Handwritten text, likely bleed-through from the reverse side of the page. The text is mirrored and includes words such as "Habitat in Europe", "The British", and "Habitat in Europe".

The British

124
115
URSUS

3. LOTOR

Ursus cauda annulata, fascia per
oculos transversali. L. S. N. p. 48

Ursus cauda elongata Act. Stock. 1747. t. 9. f. 1.

Mus Indicus alius. gesn. quadr. 197

Vulpi affinis americana Rai quadr. 179

Raccoon Kalm. it. 2. p. 228.

corpus cinereum, pilis erectis, ferrugineis
apice nigris, unde inspectus umbra nigra
cingitur.

caput fuscum frons alba. fascia nigra trans
oculos, in medio interrupta cum linea nigra
perpendiculari interjecta cauda quinque
anulis nigris ornata. L. S. N. p. 71. ed. nov.

Habitat in America maritima.

The Raccoon

MAMMALIA FROM 1912

EX. 1. A.

order

[Faint, illegible handwriting on lined paper]



124

116

MAMMALIA FERRE URSUS

3 MUS INDICUS

URSUS cauda elongata et anulis
nigris ornata.

facie et fronte albidis. duobus
lineis nigris transversibus
in fronte positis. maculis oculo-
rum nigris.

Magnitudine quam Votor minor.

Habitat in America

The Lesser Raccoon
or
Indian Mouse

MAMMILLA FERR. 2072

[Faint, illegible handwriting on lined paper]

[Faint handwriting on the left edge]

124

117

URSUS

A LUSCUS

Luscus, β URSUS cauda elongata,
corpore ferrugineo, rostro, fusco. fronte
fasciaq₃ laterali longitudinali albida.
Ursulus lupi affinis americanus. Edw. av. 1. p 103
Habitat ad Linum Hudsoni. L. S. N. p 47
The Wolverine.

o,

m

WALTONVILLE, ALA. 36880

under

<

1968

WALTONVILLE, ALA. 36880

WALTONVILLE, ALA. 36880

WALTONVILLE, ALA. 36880

WALTONVILLE, ALA. 36880

124

MAMMALIA DECORA

118

MAMMALIA FERÆ URSUS

9,

m

MAMMALIA BR. 2075

MAMMALIA BR. 2075

MAMMALIA DECORA Cerv

MAMMALIA EFRA Didelphis

Dentes Primores Superiores X
 Inferiores VIII intermediis
 2 brevissimis
 Canini longi
 Molares denticulati

irto,
 ic,
 III.
 dum

Lingua subciliata

Folliculis abdominalis mammarum

Species Linnei 5.

1. Marsupialis.
2. Philander
3. Oposum.
4. murina
5. dorsigera.

MAMMALIA ERRA. Bidder's

MAMMALIA ERRA. Bidder's

Order: Carnivora

Family: Canidae

Genus: Canis

Species: Canis lupus

Subspecies: Canis lupus

Canis lupus

Canis lupus

Canis lupus

Canis lupus

Canis lupus

Canis lupus

Canis lupus

Canis lupus

MAMMALIA PECORA Cervus

MAMMALIA FERÆ Didelphis

MARSUPIALIS

DIDELPHIS mammis 8 intra abdomen

Amen acad. s. p. 279. mus Ad. friso

Philander Seb. mus. 1. p. 64 t 39.

Opposum Tyson Act 290 p 64. t 39

Carigue Laet. amer. 551.

Carigueya brasiliensis Margr. brass 222
pis. bras. 322. Johnston quad. 136. t 63

Mariticaca Rai. quad. 182 t. 63.

Plaquettzin Hermand. mex. 330

Habitat in America. vichitat Gallinis
Iachoni culmis arboris scandit, propectus
a Canibus se mortui instar contrahit.

Caribus non esculenta; terrefacta pullos
lactantes intra abum recepit.

Lin. J. N. p. 72 Edit. nov.

The Opposum
mine came from Virginia

irto,
ie,
III.
tum

MAMMALIA PECORA Cervus.

29. CERVUS.

Cornua solida, tenera, corio hirsuta,
 tecta apiceque crescentia,
 denudata, annua.

Dentes Primores inferiores VIII.

Lanarii nulli., (interdum
 Solitarii superiores.)

Species a L. Descript.

1. Camelopardalis
2. Alces.
3. Elephas
4. Parandus
5. Dama.
6. Capreolus
7. Guineensis.

VIA MAMMALIA PECORA CERVIS.

29. CERVIS.

Cornu solida, tenera, corio hirsuta,
tecta epideride cretacea,
chondula, sanna.

Dentes primores inferiores VIII.
dentariis nullis, (interdum
labiali superioris.

Species ex. descript.

1. Cervus leucurus

2. Alceus

3. Alceus

4. Cervus

5. Cervus

6. Cervus

7. Cervus

MAMMALIA. PECORA. Camelus

V. PECORA

Dentes Primores superiores nulli.

Inferiores VI aut VIII a
molaribus remotissimi.

Pedes unguati.

Mammae inguinales

27. CAMELUS

Cornua nulla.

Dentes Primores Inferiores VI.
Spatiformes.

Lanarii distantes: superiores III.
Inferiores II

Labium superius fissum.

Species a Linneo Descriptae sunt 4

- 1 Dromedarius.
- 2 Bactrianus.
- 3 Glamas.
- 4 Pacos.

MAMMALIA, PECORA, Camelus

V. PECORA

Dentes Primaries superiores nulli.

Inferiores 12 maxilla

Incisivae 2 maxilla

Tales angulati.

Mammae inguinales

17. CAMELUS

Cornua nulla.

Dentes Primaries inferiores VI.

Quadrifidui.

Incisivae superiores 2 maxilla III.

inferiores II.

Tabulae superiores 15 maxilla.

Species a Linnaeo descriptae sunt 4.

1. Dromedarius.
2. Bactrianus.
3. Ferus.
4. Indicus.

MAMMALIA PECORA Camelus

2. BACTRIANUS.

2. Camelus Tophis Dorsi duobus L.S.N. 99

Habitat in Africa.

Cursu antecedente celerior,

pro magnatibus rarior.

Tophus Posterior longe major,
alias Precedenti idem.

The CAMEL.

THE DROMEDARY

MAMMALIA BICORA Camelus

BACTRIANUS.

2. Camelus Bactrianus Boettger & Schlegel

Habitat in Africa.

Curia antea dicitur esse

pro Bactria vocata.

Topus posterior longior

et alius Bactriae dicitur.

THE CAMEL.

MAMMALIA. PECORA. Camelus.

J. DROMEDARIUS.

1 Camelus Topho Dorsi unico L. S. N. p. 90. ne
 habitat in Africa desertis siccibus
 Callos in Pedibus anterioribus 4
 in posterioribus 2 in sterno 1 gerit
 Venter secundus cellulosus
 pro aqua pura dilutius aservan-
 da per sicculosa deserta onera
 portat, lente festinat, lapsus jacet
 Super Pectus.

Anatome Act. Petropol.

The DROMEDARY.

MAMMALIA, ECORA, Camelus

1. DROMEDARIUS

1 Camelus Dromedarius Linn. 4. 2. 1. p. 100.

Habitat in Africa deserti Arabici

Color in Bedibus anterioribus p

et posterioribus et in thorace & g

Utericulis secundum albedines

pro aqua pura et lactis asperum

et per vitulos dextro crura

prostat, testis foliati, supra test

super testis.

THE DROMEDARY

MAMMALIA PECORA Cervus

I CAMELO-PARDALIS

Cervus Cornibus simplicibus, pedibus anticis
Longifrimis. Lin: S. N. ed: 12. p. 92.

Camelo-pardalis Belon itin 119 Aldr. biule. 927. t 931.

Raii quad. 90. Hasselqv. act. ups. 1750 p. 15. itin. 208.

Giraffa Briss. quad. 81.

habitat in Aethiopia & Sennar.

Pronus cubat more Cameli; Gramen Depascitur
divaricatis pedibus anticis, sed arborem imprimis
vescitur foliis.

Animal etiamnum obscurum, adpersum maculis albis
ut Cervi juniores.

MANIMALIA PECORA CERVUS

ALCES

2 Cervus, cornibus acaulis, palmatis
 coronula gutturali. L.S.N p. 93. ed. 1769
 habitat in borealibus Europe, America
 Asiaq, Populetis.

The Elk. or Alce

1769
 or
 r lip
 w dip.
 jaw
 exactly
 jaw
 ll
) as
 - the
 the
 the
 kind
 hinder
 ced on
 its

The Graps, it now
 winter coat is long & shaggy. which it changes in
 July for a very smooth coat of a dark mouse colour.

MAMMALIA PECORA CERVS

I CAMELO-PARDALIS

Cervus Corbieus simplicicornis, pedibus artibus
significans, Ann. N. G. 12. p. 92.

Camelo-pardalis Belsar etc. in Hbr. Godefr. p. 131
Bain quatuor po. Hbr. Godefr. etc. etc. 1770 p. 12. etc. etc.
Godefr. Belsar. p. 131.
Lactat in Hbr. Godefr. etc. etc.

Corbieus erubet mare Corbie; fœmæa-Dependent
Bimaculatus pedibus artibus etc. etc. etc. etc.
Bimaculatus fœmæa.

Animal Chamaeum oblongum, ad partem nasalem etc.
et fœmæa etc.

Blank page with faint bleed-through text from the reverse side.

1831

1831

1831

1831

1831

1831

The Moose Deer

That I saw was a Female sent by Gen^l
 Wentworth to the God of New Hampshire in the^r 1769
 To the Marquis of Rockingham it was ^{a Female} a year
 & half old in height five feet 2 inches & a half
 to the top of the Bunch of its back. its upper lip
 is divided like the Camell's. The Nostril is within upper lip.
 it had five Teeth on each side of the under jaw
 & I think about 6 Grinders I could not exactly
 count them as they went to the extremity of the jaw
 which I could not easily reach. they were all
 even. its Eyes were small its nose hooked as
 in the Camell. its ears large. has a bunch on the
^{over the shoulder.} Back covered with long hair also a mane of the
 same sort from top of the head to the Bunch on the
 back. a beard on the throat like some of the goat kind
 as very short Tail, its fore legs longer the hinder
 legs so that it is forced to kneel when it feeds on
 the Grass, it holds its neck stretched forward. its
 winter coat is long & shaggy. which it changes in
 July for a very smooth coat of a Dark mouse colour.

with a chestnut coloured coat, interspersed with white
hairs. like some of our Roan horses but darker
& not so red. The Beast was gentle, preferred
the leaves & branches of Trees to grass or herbs
it agrees in so many particulars with the shape
of the Conel. that I suspect it to be the same
with the Canelo - Pardalis. but Linnaeus' Descrip-
-tion is too short to form a perfect judgment
of it. this beast came from New-hampshire the Conelo Pardalis
is said to be a native of Ethiopia & Senar.
a male was sent at the same time but died
in its passage

it is reported that some of these animals are
nine feet high.

the fossil horns which are dug up in bogs in
Ireland & are said to be the horns of this animal

I have heard that a male is now living at the
seat of the D: of Richmond.

of Deer.

The Many Writers of Natural History have left no subject more imperfectly treated on then this Genus of Quadrupeds. the very learned Linnaeus. Describes 7 Species.

The *Camelo pardalis* or Camel Leopard.

The *Alces* or Elk

The *Elaphus* or Stag.

The *Torandus* which he speaks of a Synonymous word with *Rangifer*. as described by Gesner

& Ray. ^{p. 8} of the *Capra Greenlandica* or Greenland Buck. Described by Rai. quad. 90 & by Edwards. v. 1. t. 51.

if it was not for so great an Authority I should make no doubt. but that these were

3 Distinct Animals. Linnaeus says the *Torandus* inhabits Europe and America chiefly in the Northern Parts.

5 The *Dama* or fallow Deer. 6. The *Bos* or Red Deer.
6 The *Quivernis* or Quiver Deer.
The *Bos* or Red Deer. 6. The *Bos* or Red Deer. or Red Deer.

ant have seen the Rain Deer.

but I am very certain by the horns as well as
live beasts brought from America. that the Rain
Deer which is used in Lapland for carriage
& Draft is vastly different from any American
Deer. & that both in the Northern parts
of America & of Europe there are very
different species. Some having palms on the
tops of their horn & antlers on their ^{foreheads} ~~beams~~
& others both palms and Branches or Spikes
on the tops of the Horns & Antlers next
the forehead. & the Rain Deer Palms on the
Summit & next the forehead & the place of the
Antler. & this beast never changes its horn
as all others do & the female is horned.

The figure Edwards gives of the Greenland
Lark differs so vastly from all the fig^s. I have
met with ^{of the Rain Deer} ~~convincing~~ me it can't be the same
animal. & yet it seems to me almost impossible
that so great a Man as Linnaeus who lives at Stockholm
should be mistaken in this matter. he certainly

75

MAMMALIA PECORA Cervus

RANGIFER Raii quadr. 88

is ramo

ancis

107

umber

but
liv
Dec
of
De
A
Dip
top
o the
on
the
Su
un
as
The
but
me
are

That so great a man as Linnaeus who lives at Stockholm
should be mistaken in this matter, he certainly

MAMMALIA PECORA CERVUS

MONTANUS

Cervus cornibus teritibus erectis ramo-
sis. collo subeius jubato.

colore rufescente.

Magnitudo Alces Equae

Habitat Montibus Germanicis

The Mountain Stag.

This Stag was painted in Windsor
Forest the property of the Duke of Cumberland
= land is said to come from Germany.

MAMMALIA PECORA CERVIS

MONTANUS

Cervus cornibus fetibus erectis raris

ris. collo subus jugato.

colore rufescente.

Montanus Alpes Alpes

Habitat Montibus Germanis

The Mountain Stag.

This stag was painted in Windsor

about the year 1700 by the painter

John Bull.