

M



MAMMALIA PECORA CERVUS

MONTANUS

♀ FEMINA

Habitat in Montibus Germanicis

The Mountain Hinder.



MAMMALIA TROCA CERVUS

MONTANUS

FEMINA

HELD IN MONTANA

The Montana



## TARANDUS.

S'

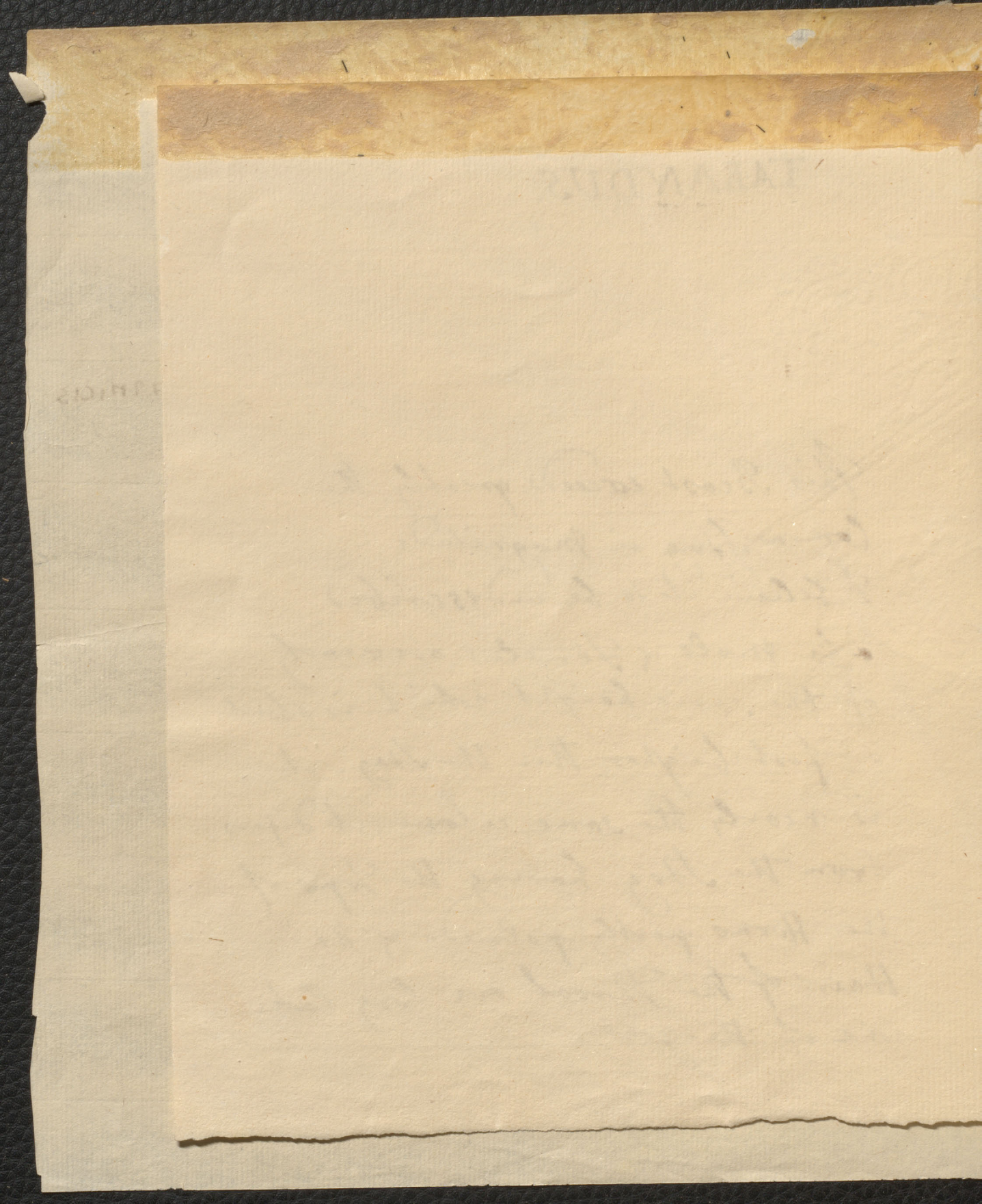
recurva

tus pol-

3.

This Beast exceeds greatly the  
 Common Stag in Magnitude  
 I believe it to be undescribed  
 The Male & Female are nearly  
 of the same height which is about  
 a foot higher than the Stag. it  
 is nearly the same colour it differs  
 from the Stag having the Tops of  
 the Horns partly palmed. & the  
 Hair of the Throat are long like  
 some of the goats.







## MAMMALIA PECORA CERVIUS

## TARANDUS

CERVUS cornibus ramosis recurva-  
tis teretibus. summitatibus poly-  
ematis. Linn: S. N. n. ed. p. 93.

The Russian Hinde.



MAMMALIA PECORA CERVIS

TARANDUS

CERVUS corinibus ramosis rursus  
-is cervibus. ruminatibus  
-ibus. Cerv. L. N. G. P. 2.



MAMMALIA DECORA Cervus

CERVUS Endocaulatus Cervus caucasicus  
 Ramus V. caprae etc. etc. etc. etc.  
 Color? etc. etc. etc. etc. etc.  
 Habitat? etc. etc. etc. etc. etc.  
 Magnitudo? etc. etc. etc. etc. etc.  
 Habitat?

The Russian Hinde.



MAMMALIA BECOA CIVIS

The Russian Hinde



MAMMALIA PECORA Cervus

FUSCO-MACULATUS.

CERVUS Fusco-maculatus. Cornua tenuissima  
 Ramis V. cuius tribus in Veribus posius,  
 Color partes superiores rufescentes  
 maculis fuscis notata.  
 inferiores albae.  
 Magnitudo precedenti inferior  
 Habitat.

The Brown-Spoted Stag.

THE BROWN-SPOTTED STAG

*[Faint, illegible handwriting, likely bleed-through from the reverse side of the page.]*



MAMMALIA PECORA CERVIS

FUSCO-MACULATUS

CERVIS Fusco-maculatus. Cornua extrusiss...

Ranais V. capus tribus in Vertibus posis

Color portes papirius rufescentes

incedit fides notat

inferiores alba

Mammulae praecedunt inferior

Habitus

The Brown-Spotted Stag



MAMMALIA PECORA. Cervus.

FORMOSUS

Cervus FORMOSUS. Cornua quinque  
cujus tribus in verticibus positis  
colore ~~rufo~~ rufescente sed in  
lateribus maculis albis notatus  
in parte inferiore albicat.

Magnitudine precenti inferior

Habitat.

The WHITE SPOTED STAG.

This most beautifull Stag & its Hinde was  
painted at Windsor & belong to y<sup>e</sup> D. of Cumberland  
it is larger then the Comon Red Deer but  
less then the Brown spotted. its horns <sup>stronger</sup> ~~harder~~  
then those of the Brown spotted Stag (the branches  
the same in number & placed in the same order  
I have not yet been inform<sup>d</sup> what country it inhabits



MAMMALIA PECORA. Cervus.

FORMOSUS.

CERVUS FORMOSUS. Cervus formosus.

Cervus formosus in verticibus posterioribus  
color ~~est~~ rufescente sed in  
lateralibus maculis albis notatis  
in parte inferiore albis.  
Magnitudine parva inferior

Habitat

The WHITE-SPOTTED STAG.

This most beautiful stag is to be found  
mostly at Khasia & Jaintia hills. It is larger than the common deer but  
less than the Brown stag. It has  
than those of the Brown stag. The horns  
are more numerous & placed in the same  
I have not yet seen a female of this



## MAMMALIA PECORA Cervus

## 3. Elaphus

Cervus cornibus ramosis totis  
 teretibus recurvatis L. S. N. 93.

Habitat in Europa & Asia

The Stag.

on  
 well  
 all in  
 at Dely  
 shining  
 open  
 the top  
 of the  
 stag.  
 horns  
 are white  
 tail.  
 on each



ALAMIA TA ETCORAM

1101  
1812  
1813  
1814  
1815

1816  
1817  
1818  
1819  
1820



149

144

143

MAMMALIA PECORA Cervus

♂ Dama  
Cervus cornibus ramosis, recurvatis  
compressis. summitate palmata. L. N. 93  
habitat in Europa.

The Fallow Deer.

on  
well  
all in  
at Dely  
shining  
ape  
the top  
of the  
lag.  
-hairs  
re White  
tail.  
or each

the year



116  
positiv  
101

101  
positiv  
101



147

144

MAMMALIA PECORA CERVUS

CAPREOLUS

sive Dorcas.

6. Cervus, Cornibus ramosis teretibus erectis: summitate bifida. L.S.N. p. 94.

Capra, Capreolus, Dorcas. Gesn. quad. 69  
Jonst. quad. 33. t. 33.

Caprea plinii, Capreolus Aedros. Fionde.  
738. Raii quad. 89.

habitat in Europa Asia,

The Roe Buck.

from  
well  
well in  
near Dely

Shining  
hoped  
the top  
h

of the  
tag.

hairs  
re White  
opos tail.

The feet divided as in Deer. a white line is over each



1810  
1811  
1812  
1813  
1814  
1815  
1816  
1817  
1818  
1819  
1820  
1821  
1822  
1823  
1824  
1825  
1826  
1827  
1828  
1829  
1830  
1831  
1832  
1833  
1834  
1835  
1836  
1837  
1838  
1839  
1840  
1841  
1842  
1843  
1844  
1845  
1846  
1847  
1848  
1849  
1850  
1851  
1852  
1853  
1854  
1855  
1856  
1857  
1858  
1859  
1860  
1861  
1862  
1863  
1864  
1865  
1866  
1867  
1868  
1869  
1870  
1871  
1872  
1873  
1874  
1875  
1876  
1877  
1878  
1879  
1880  
1881  
1882  
1883  
1884  
1885  
1886  
1887  
1888  
1889  
1890  
1891  
1892  
1893  
1894  
1895  
1896  
1897  
1898  
1899  
1900

CARRIAGES  
SIX DOLLARS

1810  
1811  
1812  
1813  
1814  
1815  
1816  
1817  
1818  
1819  
1820  
1821  
1822  
1823  
1824  
1825  
1826  
1827  
1828  
1829  
1830  
1831  
1832  
1833  
1834  
1835  
1836  
1837  
1838  
1839  
1840  
1841  
1842  
1843  
1844  
1845  
1846  
1847  
1848  
1849  
1850  
1851  
1852  
1853  
1854  
1855  
1856  
1857  
1858  
1859  
1860  
1861  
1862  
1863  
1864  
1865  
1866  
1867  
1868  
1869  
1870  
1871  
1872  
1873  
1874  
1875  
1876  
1877  
1878  
1879  
1880  
1881  
1882  
1883  
1884  
1885  
1886  
1887  
1888  
1889  
1890  
1891  
1892  
1893  
1894  
1895  
1896  
1897  
1898  
1899  
1900

1810  
1811  
1812  
1813  
1814  
1815  
1816  
1817  
1818  
1819  
1820  
1821  
1822  
1823  
1824  
1825  
1826  
1827  
1828  
1829  
1830  
1831  
1832  
1833  
1834  
1835  
1836  
1837  
1838  
1839  
1840  
1841  
1842  
1843  
1844  
1845  
1846  
1847  
1848  
1849  
1850  
1851  
1852  
1853  
1854  
1855  
1856  
1857  
1858  
1859  
1860  
1861  
1862  
1863  
1864  
1865  
1866  
1867  
1868  
1869  
1870  
1871  
1872  
1873  
1874  
1875  
1876  
1877  
1878  
1879  
1880  
1881  
1882  
1883  
1884  
1885  
1886  
1887  
1888  
1889  
1890  
1891  
1892  
1893  
1894  
1895  
1896  
1897  
1898  
1899  
1900

1810  
1811  
1812  
1813  
1814  
1815  
1816  
1817  
1818  
1819  
1820  
1821  
1822  
1823  
1824  
1825  
1826  
1827  
1828  
1829  
1830  
1831  
1832  
1833  
1834  
1835  
1836  
1837  
1838  
1839  
1840  
1841  
1842  
1843  
1844  
1845  
1846  
1847  
1848  
1849  
1850  
1851  
1852  
1853  
1854  
1855  
1856  
1857  
1858  
1859  
1860  
1861  
1862  
1863  
1864  
1865  
1866  
1867  
1868  
1869  
1870  
1871  
1872  
1873  
1874  
1875  
1876  
1877  
1878  
1879  
1880  
1881  
1882  
1883  
1884  
1885  
1886  
1887  
1888  
1889  
1890  
1891  
1892  
1893  
1894  
1895  
1896  
1897  
1898  
1899  
1900



149

MAMMALIA PECORA

145

MAMMALIA PECORA. Cervus

BENGALENSIS

Cervus cornibus ramis tribus,  
corpore parvo, fusco maculis minimis  
notato. habitat in Bengal.

## The Hog Deer.

This Deer male & female was brought  
into England by Lord Clive in year 1767  
& bred in his Park.

iron  
well  
all in  
ear Delg

Shining  
tape  
the Top  
h

of the  
tag.  
his horns  
are white  
tail.  
over each

The feet are white



1011  
ST.  
1812  
2nd in  
positiv

1011  
ST.  
1812  
2nd in  
positiv



MAMMALIA

149

MAMMALIA PECORA

147

MAMMALIA PECORA Cervus

MACULATUS

Cervus. cornibus ramis duobus corpore parvo. ferrugineo maculato

Habitat in India Orientale

The Spotted Deer

This Deer was brought from Benghall by D Clive in y<sup>e</sup> year 1767. & bred in his park at Greenwich.

iron well all in ear Dely

Shining have the top

of the Stag. the hoars are white & tail. over each

The feet snow or in







MAMMALIA PECORA

The Low Deer or Neel Gojay

This Beast with the Female was brought from  
 Bengall & presented to Ld Clive by God ~~Cranwell~~ <sup>Cranwell</sup> in  
 the year 1767 probably came from the Country near Dely  
 the Male horned with Smooth horns of a Shining  
 black bending forward, the head & ears shape  
 like those of a horse a black mane from the Top  
 of the head to y<sup>e</sup> midst of the Back. a black  
 tuft of hair like a beard on the underside of the  
 neck as in some Goats. its size equals a Stag.  
 its colour a Dark lead colour mixed with white hairs  
 the underside of the neck breast belly & Tail are White  
 the tail black on the top shaped like an Asses tail.  
 the feet divided as in Deer. a white line is over each



of the fore feet & two white spots divided by a black  
line over each hind foot. The hanches under the tail  
have a white line.

The female differs from the male in having no  
horns. & being of a light brown colour & also  
the young one was of the same colour.

It can not be classed among the Cervi. because  
it does not change its horns.

the mane & beard under the throat resembles  
the moose Deer.

the whole form of its body differs too much  
from the goats particularly its head & tail that  
it can not properly come in to the Goat Class.

so that I considered it as a new Genus undescr-  
bed by any Author which I have met with.



MAMMALIA. PECORA. CERVUS.PUSILUS

Cervus pusilus guineensis. Sebmus. 1. p. 10

habitat in Asia, Guinea

The Small Guinea Deer

This Drawing is as big as the Life  
it is a female & was the property of Mr Guy  
I have not yet been able to get a sight of  
the male. but have oft heard that the male  
has horns & therefore can not be of the species  
of y<sup>e</sup> Moschus described by Linnaeus.  
he calls this Deer Moschus. Pymæus SN p. 92

The Teeth of this animal are all united as  
in the Drawing tho so divided at the end as  
to appear like many Teeth.



MAMMALIA PECORA. CERVIS.

PUSILLUS

Cervus pusillus guineensis. Gmelin. p. 10

Robertus Guineensis

Richardus Guineensis

This drawing is a fig. of the life  
 of a female & shows the property of the  
 I have not yet been able to get a sight of  
 the male. But have off hand that the  
 has horns & therefore is not but the species  
 of the species described by Gmelin.  
 he calls this Cervus pusillus. I am not  
 The date of this drawing is all united as  
 in the drawing the is divided at the end as  
 to appear like a long letter



## MAMMALIA PECORA CERVUS

## 'T'RAGULUS

Cervus Longitudine s. pedes.  
 Pondus 5<sup>lb</sup>. 14 oz.

Habitat Insula Zeylonica

The Small deer of Ceylon

This Drawing was copy'd from one of Mr Lorton  
 who was Governor of Ceylon —  
 it was called in Ceylon The Linglose Walmica  
 & from the Authority of this Curious observer  
 and the Difficulty of Procuring the Original I  
 have given it a place in this Collection.

at present the small deer  
 of Ceylon is very scarce  
 that I remember



MAMMILLA PECORA CERVUS

T. RAGLAND

CERVUS (Capreolus) s. pedo.  
London 7. 24. 02.

Habitat Juncus Esplanis

The small deer of Esplan

This drawing was copied from one of the plates  
of the Government of Esplan. The Esplan Plate  
it was called in Esplan. The Esplan Plate  
is from the Esplan of the Esplan Esplan  
and the Esplan of Esplan. The Esplan  
has given it a place in this collection.



MAMMALIA PECORA

160

161

PECORA Capra

153

MAMMALIA PECORA Capra

Gazella

Caper Cornibus teretibus longissimis: k

basi annulatis. <sup>Lin</sup> Sys. Nat: p. 96. n. 7. 6

Gazella India. cornibus rectis longissimis

nigris prope Caput tantum annulatis.

habitat in India.

The Antelope.

This beast differs from all others  
that I know of in having two nostrils  
under his Eyes which he opens & shuts  
at pleasure. This is not taken notice  
of by Linnæus. nor any Natural Historian  
that I remember

13

14

R. 2



MAMMALIA TERCERA CAPES

GAZELLE

Capri. Cervinus cervinus cervinus.  
Gazelle gazelle gazelle.  
Capri capri capri.  
Gazelle gazelle gazelle.

THE BUCKLE

This buck is found in  
the mountains of the  
Himalayas. It is not  
found in the mountains  
of the Himalayas. It is  
not found in the mountains  
of the Himalayas.

1870  
1871  
1872



PECORA Capra

155

## MAMMALIA PECORA Gazella

## DORCAS.

Gazella africana, cornibus brevioribus  
ab imo ad summam fere annulatis & circa  
medium inflexis Raii quadr. 80.

A gazel ex Africa Hern. mex. 593.

Dorcas. 10 Capra teretibus perfecte  
annulatis recurvatis contortis

L. S. N. ed. 12. p. 96. n. 10.

Habitat in africa Tripoli. Mexico  
cornua e fronte inter oculos, apice annulata  
The african Antelope.



MAMMALIA DE COCA

DE COCA

Gazelle africana, leonibus, hyrcanis

et aliis de summo monte perit, hinc

medicinis infans, hinc perit

Algeri ex Africa, hinc perit

Barcoo. 10 Capra conchosa perit

hinc perit, hinc perit

et hinc perit, hinc perit

hinc perit, hinc perit

hinc perit, hinc perit

hinc perit, hinc perit

hinc perit, hinc perit

1874

1875

1876



## MAMMALIA PECORA Capra

## MAMMALIA PE, CORA Capra

## 10 DORCAS

C. Cornibus ceteribus ~~arcuatis~~ perfecte  
annulatis recurvatis cortortis. L. S. N. 96

Gozella africana, cornibus brevioribus  
circa medium inflexis. Raii quad. 80

Algozell ex Africa Hern. mex. 393.

habitat in africa, mexico.

cornua e fronte inter inter Oculos  
apice arcuata.

The African Antelope.

This goat has only 2 Nostrils  
therefore differs totally from  
the Antelope







## MAMMALIA PECORA Capra

## CAPRA

CORNUA concava. sursum versa, erecta  
 scabra.

DENTES PRIMORES inferiores VIII  
 LANARIUM nulli.

## Species Linici

1. Hircus ✓
2. Capra angorensis ✓ v. No 14.
- \* 3. Ibex ✓ <sup>feminae precedenti.</sup> from Lornia. Herbold. <sup>to Aleppo.</sup>
4. Nubrica ✓ Bengalensis. <sup>il Syriaco.</sup>
5. Rupicapra ✓ from Lornia Chamois.
6. Deprepa ✓
7. reversa ✓
8. Gazella ✓
9. Cervi-capra ✓
10. bezoartica
11. Dorcas. ✓
12. Tartarica
13. Amon. ✓
- \* 14. Angorensis vel Serica. mistaken by Linnaeus for No. 2



MAMMALIA TEGORA CAPRA

CAPRA

CORNUS CONGREGATA. ANNUM VOTO. OCTO

LEADER.

DENTES PRIMARES inferores VIII

LAVARII mellei

Species dentic

1. Hircus v

2. Capra anagoroides v. No. 14.

3. Capra pyrenaica v. No. 15.

4. Capra sibirica v. No. 16.

5. Capra montana v. No. 17.

6. Capra caucasica v. No. 18.

7. Capra

8. Capra

9. Capra

10. Capra

11. Capra

12. Capra

13. Capra

14. Capra

15. Capra

16. Capra

17. Capra

18. Capra



MAMMALIA PECORA

100

161

MAMMALIA PECORA CAPRA

159

157

I. HIRCUS.

1. C. cornibus carinatis arcuatis, gula barbata,

L. Faun. succ. ##. Capra. Gesn. quadr. 47. Raii 2. 77



MAMMALIA TEGORA CAPRA

A. HILGERS

1. C. ...  
2. ...



MAMMALIA PECORA

100

161

159

69

8

MAMMALIA PECORA

CAPRA

ngijsimis;

L. 3 p 197

CAPRA BENGHALENSIS

isimis

Quic. 79.

*C. cornibus arcuatis contortis raris*

MAS.

The Bengal He Goat

This was brought into England by D. Clive



DIAPYCNIA TAYLORII

CALIFORNIA

CALIFORNIA BRIDGE PLANT

California Academy of Sciences

MAR

Dr. General H. Ford

San Francisco, California

1892  
No. 11



190  
161  
MAMMALIA PECORA Capra

MAMMALIA PECORA. CAPRA. 158

1. GAZELLA.

C. Cornibus teretibus rectissimis longissimis,  
Basi anulatis. L. S. N. n. ed. 12. Houtt. nat. 3 p 197  
t. 24 f. 1. Briss. quadr. 67.

Gazella indica, cornibus rectis longissimis  
nigris, prope caput tantum anulatis. R. i. q. 79.  
Gazella.

Elan.

habitat in India.

q. the Deer Goat  
from Pennsylvania







160  
161  
MAMMALIA PECORA Capra

MAMMALIA PECORA 159

CERVICAPRA

C. cornibus teretibus dimidiato-annulatis  
flexionis contortis. L.S.N. p. 96.

Gazella. Dodart. act. 3. p. 1. p. 95. t. II. fona.

Strepsiceros. Gesn. quad. 323. Aldr. bisulc.  
740. Johnst. quad. t. 24. Raii. quad. 79.

Habitat in India

Pili circum cornua longiores,

clinatis

732

iii. quadr

5. in

land 1769



MAMMALIA PECORA CAPRA

MAMMALIA PECORA CAPRA

CERVICAPRA

Cervicapræ...  
Hæc...  
Hæc...  
Hæc...  
Hæc...  
Hæc...



100  
161  
MAMMALIA PECORA Capra

161  
160  
MAMMALIA PECORA

CAPRA

C. BENGHALENSIS

Femina

The Bengal She Goat  
brought into England by D Clive

clinatis

732,

iii. quadr

5, m

land 1769



*[Faint, illegible handwritten text on the left edge of the page]*

*[Faint, illegible printed text, possibly bleed-through from the reverse side of the page]*



190  
161

MAMMALIA PECORA Capra

2. IBEX.

2. Capra. cornibus nodosis in dorsum reclinatis  
gula barbata. L. L. N. 95.

Ibex. gen. quadr. 351. t. 1099. Aldr. bisulc. 732.  
Johnst. quadr. t. 28. Olear. mus. t. 10. f. 1. Raii. quadr  
77. Wagn. helv. 176.

Aircus ferus Bell. obs. 20

Habitat in Wallacia praeceptis inaccessis; in  
Creta. & in Corsica insula.

cornibus vastis reclinatis, corpore fulvo

The Steinbock from Corsica  
This & the Female were brought to England 1769



ANIMALIA PECORA Capra

INDEX

1. Capra, caprinae subgenus in sectione subgenus  
 2. Capra, caprinae subgenus in sectione subgenus  
 3. Capra, caprinae subgenus in sectione subgenus  
 4. Capra, caprinae subgenus in sectione subgenus  
 5. Capra, caprinae subgenus in sectione subgenus  
 6. Capra, caprinae subgenus in sectione subgenus  
 7. Capra, caprinae subgenus in sectione subgenus  
 8. Capra, caprinae subgenus in sectione subgenus  
 9. Capra, caprinae subgenus in sectione subgenus  
 10. Capra, caprinae subgenus in sectione subgenus

The index back for Capra  
 this is the same as brought to light in



MAMMALIA PECORA Capræ

2. IBEX

2. Femina Precedentis.

The Female  
from Corsica. in y<sup>e</sup> year 1769.



MARSHALL ISLANDS

LIBRARY

U.S. GOVERNMENT PRINTING OFFICE

WASHINGTON, D.C.

1950



MAMMALIA PECCRA. Capra

3 MAMBRICA.

3. C. cornibus reclinatis, auribus pendulis.  
gula barbata. S. L. N. p. 92. ed. 12<sup>o</sup>

Capra mambrina. f. Syriaca, gesn. quadr.  
153. Alp. Egypt. 229. Ruis quadr. 81. Ruffel  
alepp. 52. t. 52. bona,

Habitat in India

cornua vix collo longiora.

The Long-eared Goat

From Benhall, 1770.



ANIMALIA FICORA. CAPRI

AMERICA

1. C. ... ..

2. C. ... ..

3. C. ... ..

4. C. ... ..

5. C. ... ..

6. C. ... ..

7. C. ... ..

The Long-eared Gnat

from ... ..



MAMMALIA, PECORA, CAPRA

MAMMALIA, PECORA, Capra.

165?

169

164

MAMMALIA PECORA Capra

4 Rupicapra. L. S. N. p. 95. nov. Ed.

C. Cornibus erectis uncinatis.

Rupicapra Bell. itin. 57. 126. Olear. mus. t. 9 f. 3  
Gesn. quad. 140. Aldr. bisule. 727. Dodart act. 225

Scheuchz. alp. 155. Wagn. helv. 133. Raii Quad. 78

Habitat in Alpibus Helvicis summis inaccessis  
ad etiam in Corsica Insula.

Descriptio

Corpus ruffo-fuscum, sed album fronte,  
vertice gula auribus intus. Cauda etiam subtus  
nigricans labium superius subfissum.

Agagropila hujus a radice Athamanti Mei

Kram. austr. 320

The Chamois goat



MAMMALIA PECORA CAPRA

MAMMALIA PECORA CAPRA

4 Rupicapra. 181. 182. 183. 184. 185. 186. 187. 188. 189. 190.

C. cornutus erectus uncinatus.

Rupicapra. Bull. Ann. 17. 18. 19. 20. 21. 22. 23. 24. 25. 26. 27. 28. 29. 30. 31. 32. 33. 34. 35. 36. 37. 38. 39. 40. 41. 42. 43. 44. 45. 46. 47. 48. 49. 50. 51. 52. 53. 54. 55. 56. 57. 58. 59. 60. 61. 62. 63. 64. 65. 66. 67. 68. 69. 70. 71. 72. 73. 74. 75. 76. 77. 78. 79. 80. 81. 82. 83. 84. 85. 86. 87. 88. 89. 90. 91. 92. 93. 94. 95. 96. 97. 98. 99. 100.

Habitat in Alpibus Helveticis summis inaccessis  
et etiam in Caracorum montibus.

Description

Corpus rufum - facies alba, sed alba fronte,

vertebrae paleae auratae inter, (cuius etiam tubus  
significans tubum superioris subferunt.

Epigynum rufum a vertice thoracis distincte

non. 181. 182. 183. 184. 185. 186. 187. 188. 189. 190.



MAMMALIA. PECORA. CAPRA

MAMMALIA. PECORA. Capra.

5. DEPRESSA

165?

7. C. Cornibus depressis, incurvis,  
minimis cranio incumbens.

gula barbata.

1969

Habitat in America.

magnitudo Hædi Hirci. Pili longi,  
penduli. Cornua lunata, crassa, vix  
digitum longa, cranio adpressa ut  
ferè cutem perforent. L.S.N. p. 95



MAMMALIA. PECORA. Capris.

DEPRESSA

Capris depressa

capris depressa

Capris depressa

Habitat in America

capris depressa

Capris depressa

capris depressa

capris depressa

capris depressa

capris

capris

capris

capris

capris

capris

capris

capris

capris



MAMMALIA, PECORA. CAPRA.

8 CERVICAPRA

MAMMALIA PECORA. Capra.

Rupi Capra Femina.

The Female rock Goat

~~This was brought with the male from Corsica 1869~~



MAMMALIA PECORA. CAPR.

Rupicapra Fennica.

The Female rock goat

This was brought with the male from Casan 1861



169  
MAMMALIA, PECORA, CAPRA.

8 CERVI CAPRA

C. cornibus teretibus, dimidio-annulatis  
flexuosis contortis & L. N. pag. 6. ed. 12<sup>a</sup> reformata

The DEER GOAT.

From Pennsylvania.



MAMMALIA TEGOR. CAPRA.

CERVICAPRA

C. caprae ...  
Cervicapræ ...

THE DEER GOAT.

From ...



## MAMMALIA PECORA Capra

## II TATARICA

C. cornibus teretibus rectiusculis perfecte  
annulatis apice diaphanis, gula imberba. Z. J. N. 97  
Ibex imberbis. Act. Petrop. 5. p. 345 & 7. p. 39. t. 19.  
habitat in summa Asia. Femina incornis.



MAMMALIA TIBETANA

II. TIBETANA

C. ...  
...  
...  
...



