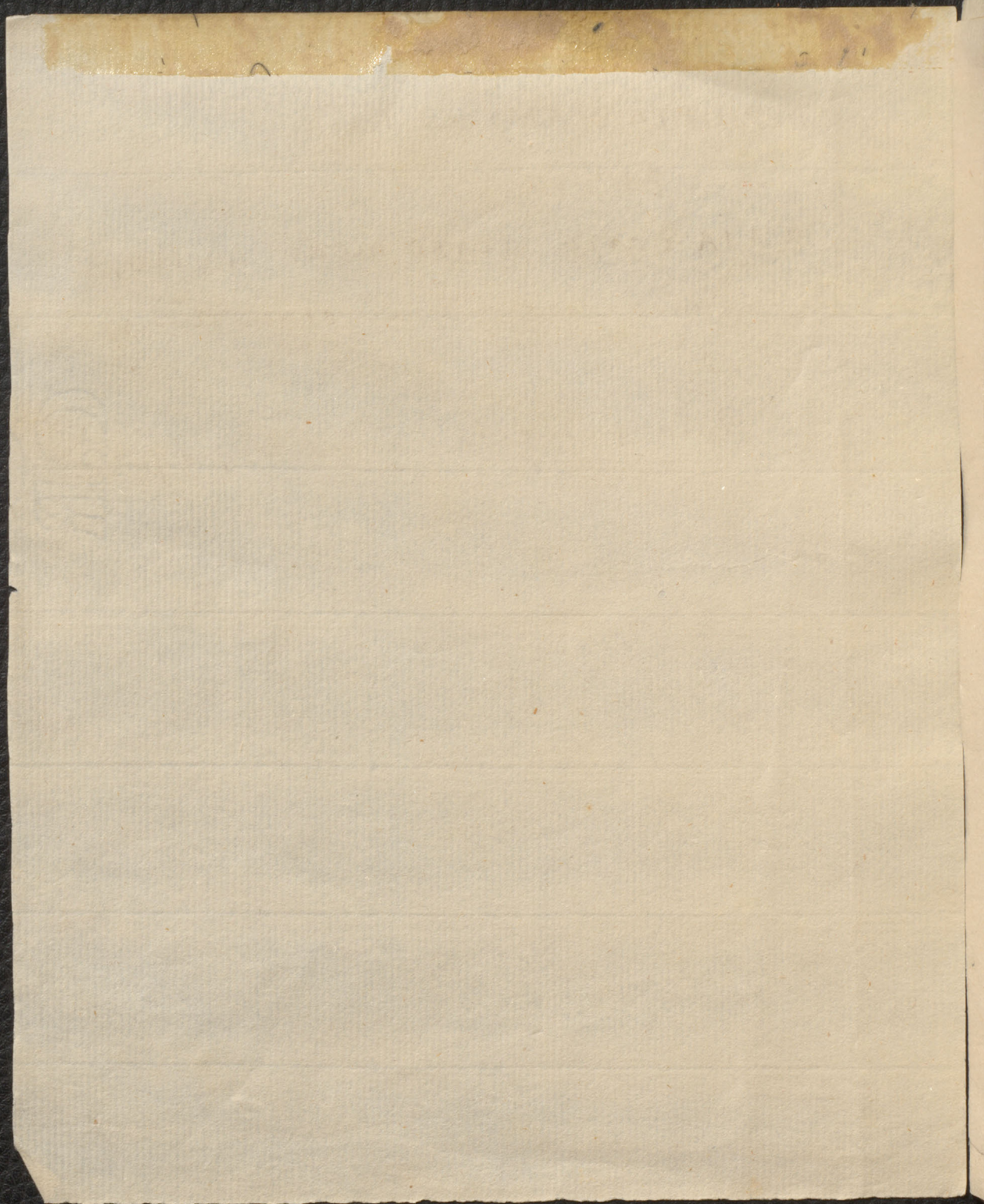


AMPHIBIA NANTES Raja.

BUTIS -

RAJA varia, dorso medio glabro,  
Cauda unico aculeorum Ordine.

Raja undulata. Lin. S. N: p395. e. n.



PISCES THORACICI PLURONECTES

Caput: Oculi ambo in eodem latere corporis.

membra: Branch: radiis IV-VII

Corpus: compressum latere altero dorsum, altero abdomen referrende

\* Oculis a latere dextro

Species descriptae linei sunt 17. viz<sup>t</sup>

- 1 Tridactylus.                      10 Lingua tula.
- 2 ~~Plagusia~~ Plagusia              11 Oculis a latere sinistro
- 3. ~~Florus~~ Ocellatus              12 lineatus
- 4. ~~Limanda~~ Hippoglossus              13 Rhombus
- 5. Cyroglossus                      14 dentatus
- 6. Plattessa                          15 maximus
- 7. Hlepus.                              16 Passer
- 8 Limanda                              17 Papillosus
- 9 Soleo                                  18 lunatus.



927

PISCES THORACICI Pteronectes

HYPOGLOSSUS

Pteronectes oculis dextris.

corpore toto glabro.

Habitat in Oceano Europaeo

variat rarius oculis sinistris

The Butt.

Faint, illegible text, possibly bleed-through from the reverse side of the page.

PISCES THORACICI Pleuronectes

FLESSUS

Pleuronectes Oculis dextris.

Linea laterali aspera, spinulis ad  
pinnas. L. J. N: p. 457. ed. nov

Habitat in Europa.

Faint, illegible text at the top of the page, possibly a header or title.

Faint, illegible text in the upper middle section.

Large block of faint, illegible text in the middle section, possibly a main body of text.

Faint, illegible text in the lower middle section.



PISCES THORACICI. Pleuronectes

SOLEA

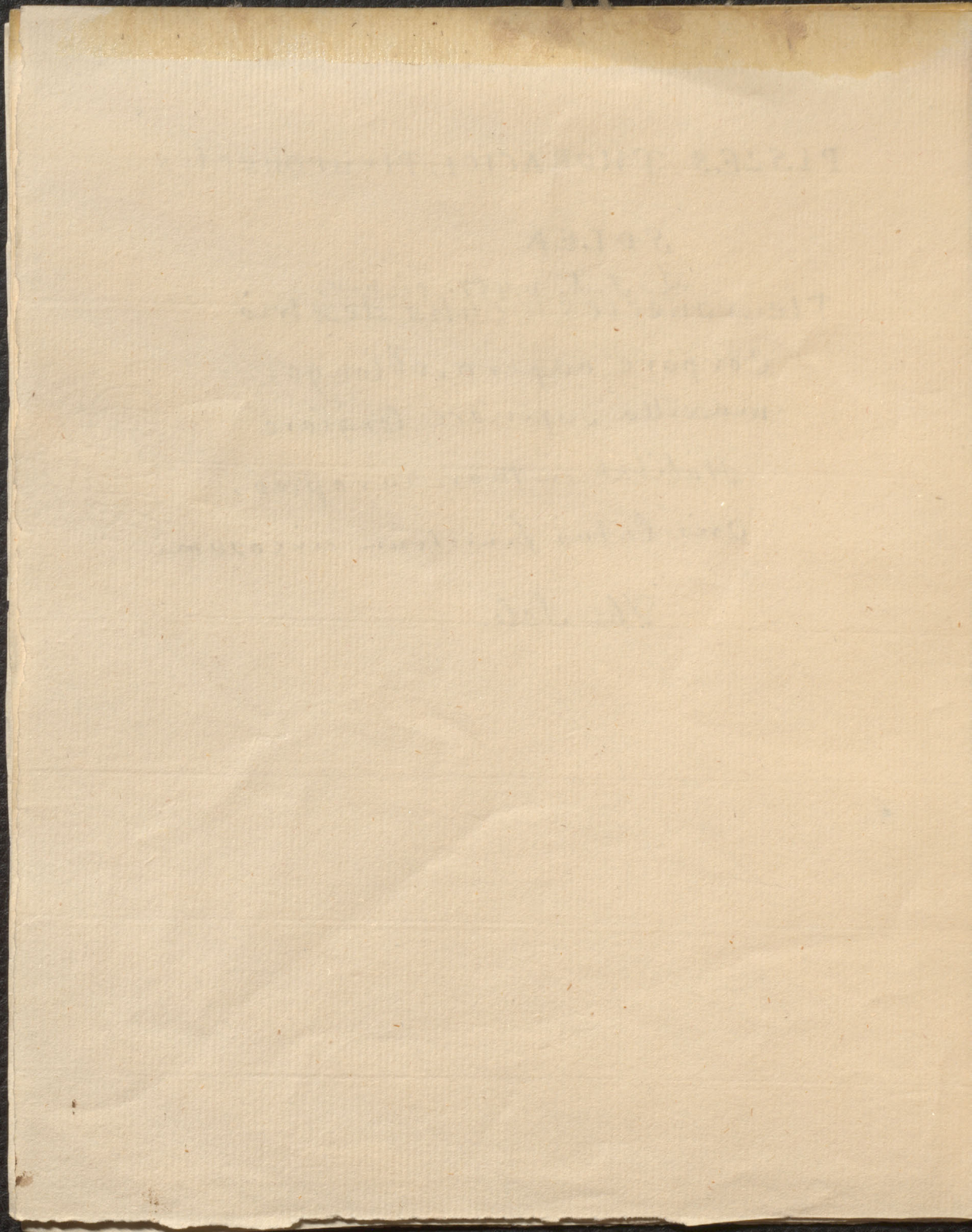
L. J. N. p. 457. Ed. nov.  
Pleuronectes oculis dextris.

Corpore aspero, oblongo,  
maxilla superiore longiore

Habitat in Mare Europæo.

Oris latus sinistrum circosum.

The Sole



PISCES. THORACICI. PLEURONECTES  
RHOMBUS

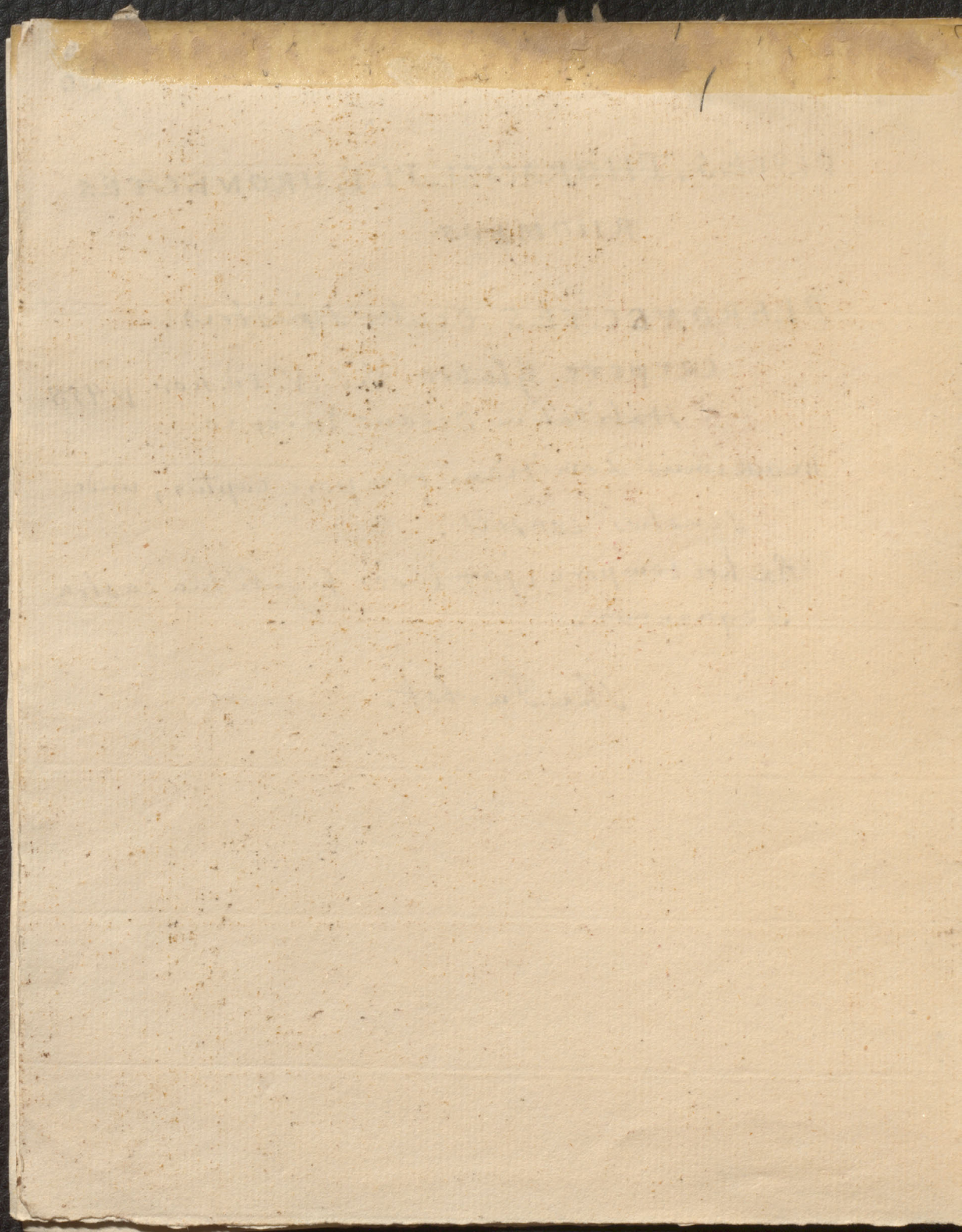
PLEURONECTES oculis sinistris.

corpore glabro. L. J. N. ed. nov. p 458  
Habitat in Oceano Europaeo

Moscimus Domitiani tempore captus, unde  
Senatus consult.

Ex hoc tempore, jam Caesar figuli tua castra  
Sequantur.

The Turbot.



Thoracici.

931

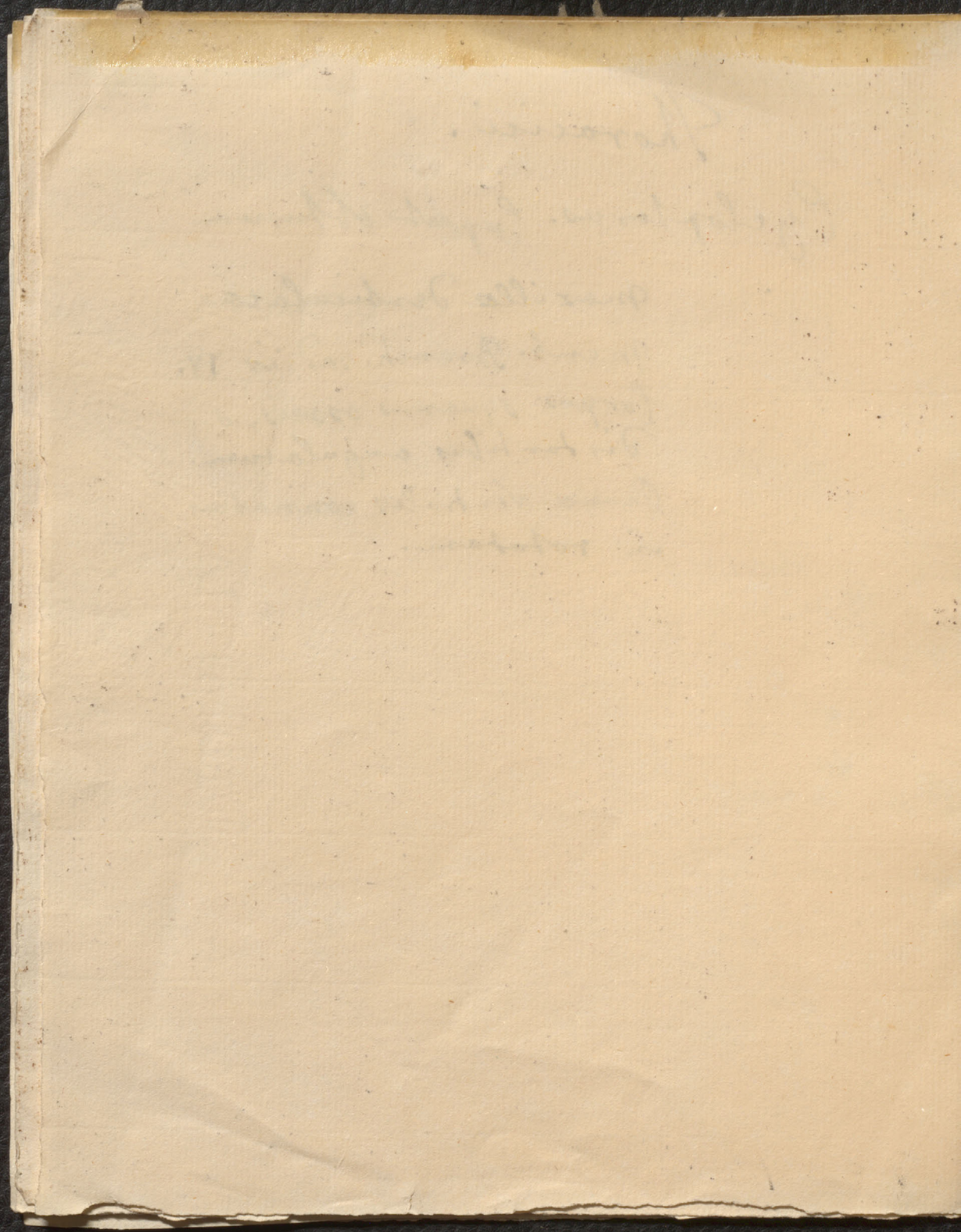
Cyclopterus. Caput obtusum

maxilla denticulata

Membr. Branch. radiis 14.

Corpus squamis osseis, de  
distantibus angulatum.

Pinnæ ventrales connatae  
in rotandam.



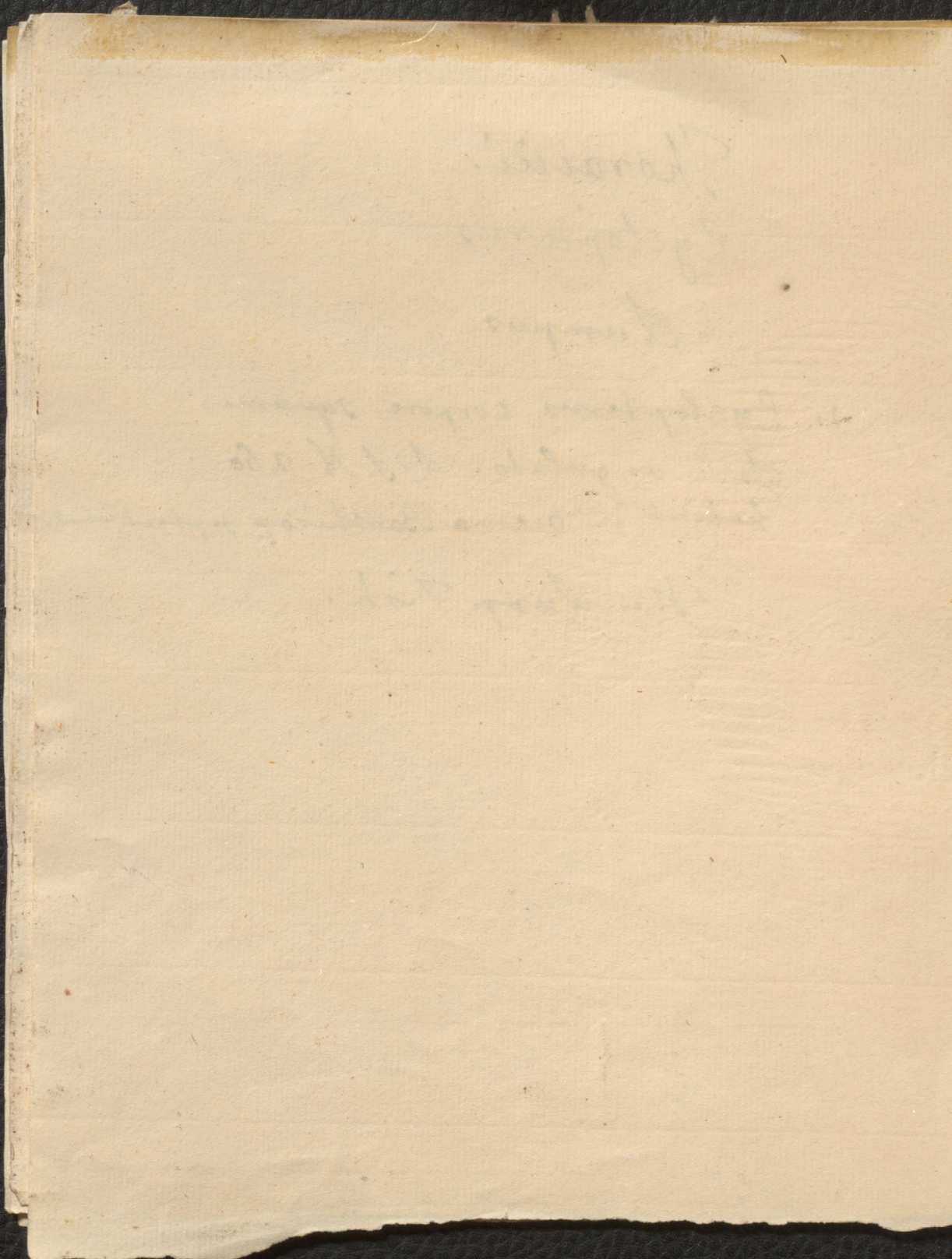
Thoracii.

Cyclopterus

Lumpus

1. Cyclopterus corpore squamis  
opacis angulato. L. S. N. 260  
habitat in Oceano Baltico & septentrionali.

The Lump Fish.





Pisces Thoracici Perca <sup>932</sup>  
Mediterranea

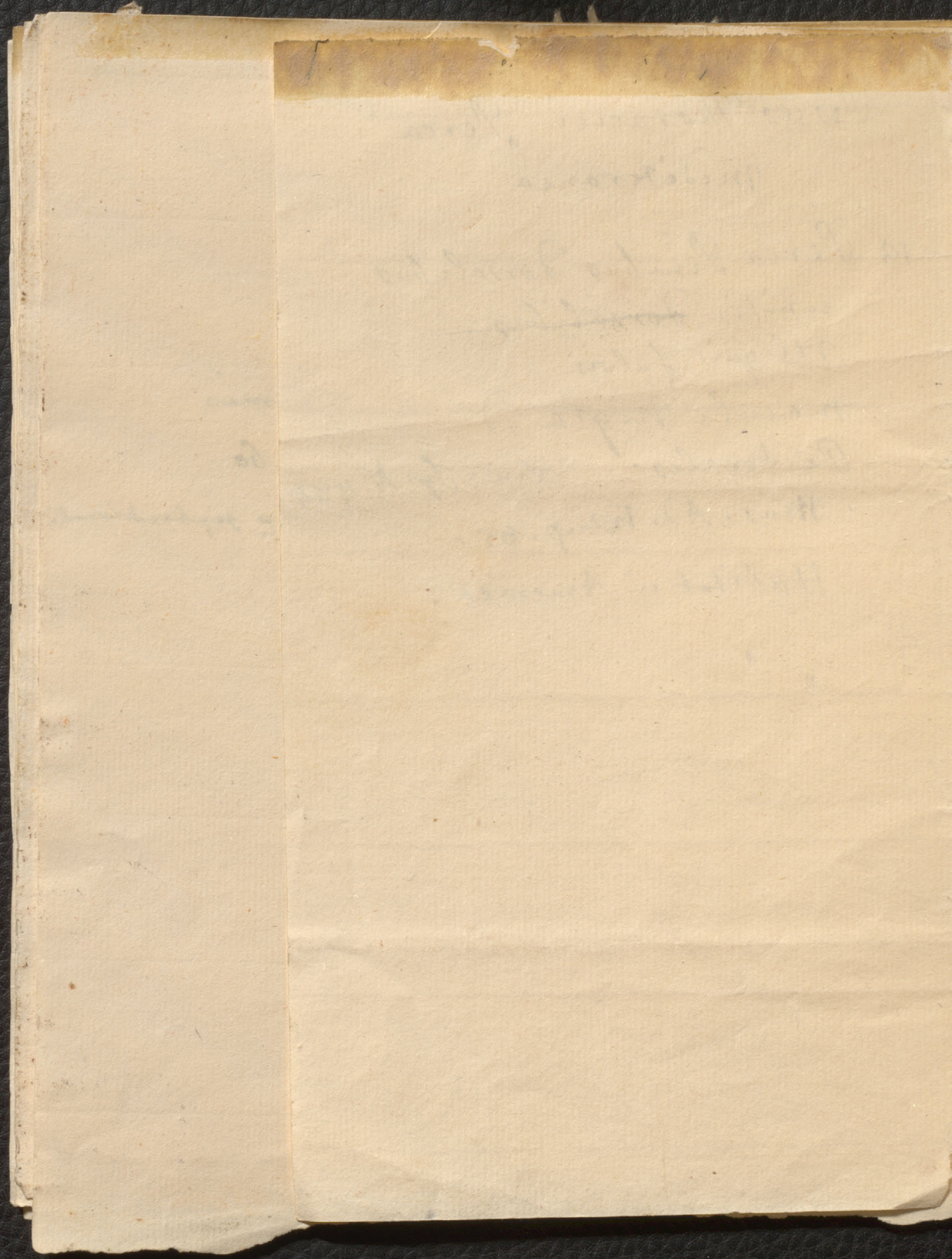
18 Perca Pinibus Dorsalibus  
unitis ~~Dorsalibus~~  
reliquis fulvis

macula nigra ad

Pectorales. Lin: Sp N. 485

Mus. Ad. Fr. 2. p. 85.

Habitat in America.



PISCES ABDOMINALES Salmo

ALBULA

L.S.N. 512. e.11

Salmo maxillis edentulis: inferiore  
longiore

Habitat in Europa  
Prurit ante Brumam

The Smelt. or Sparling.

PIECES ABANDONNÉES

ALBULA

ALBULA

ALBULA

ALBULA

ALBULA

The Samlet

is about 6 inches in length. Tail is forked  
 Three fins on the Back and 3 on the Belly  
 placed in pairs opposite to each other.  
 Colour. upper part of the head & back &  
 fins are brown.

The Sides bluish or Silver colour. The  
 the Belly White indented or waved into  
 the Sides with nine waves in each of  
 of which is a red Spot placed in a line  
 from the fin to the Tail.  
 it either not described or ill described by

*Linnæus.* in abounds in the River Severne

PISCES ABDOMINALES Clupea

HARENGUS LSN. p. 522. e. n.

Clupea immaculata, maxilla inferiore longiore.

Habitat in Euræis.

vide lici descriptionem. p. 522. e. n. v.

The Herring

The Natural History of this Fish is extremely uncertain. Those taken in the North of this Island appear first & largest in size. they are said to go to the South & round the Island in a few days but on the Norfolk & Southern Shore they are much less in size tho later in appearing.

FISHER, ARTHUR W. 1871

HARRINGTON, W. 1871

*[Faint, illegible handwriting throughout the page, possibly bleed-through from the reverse side.]*



Pisces Thoracici

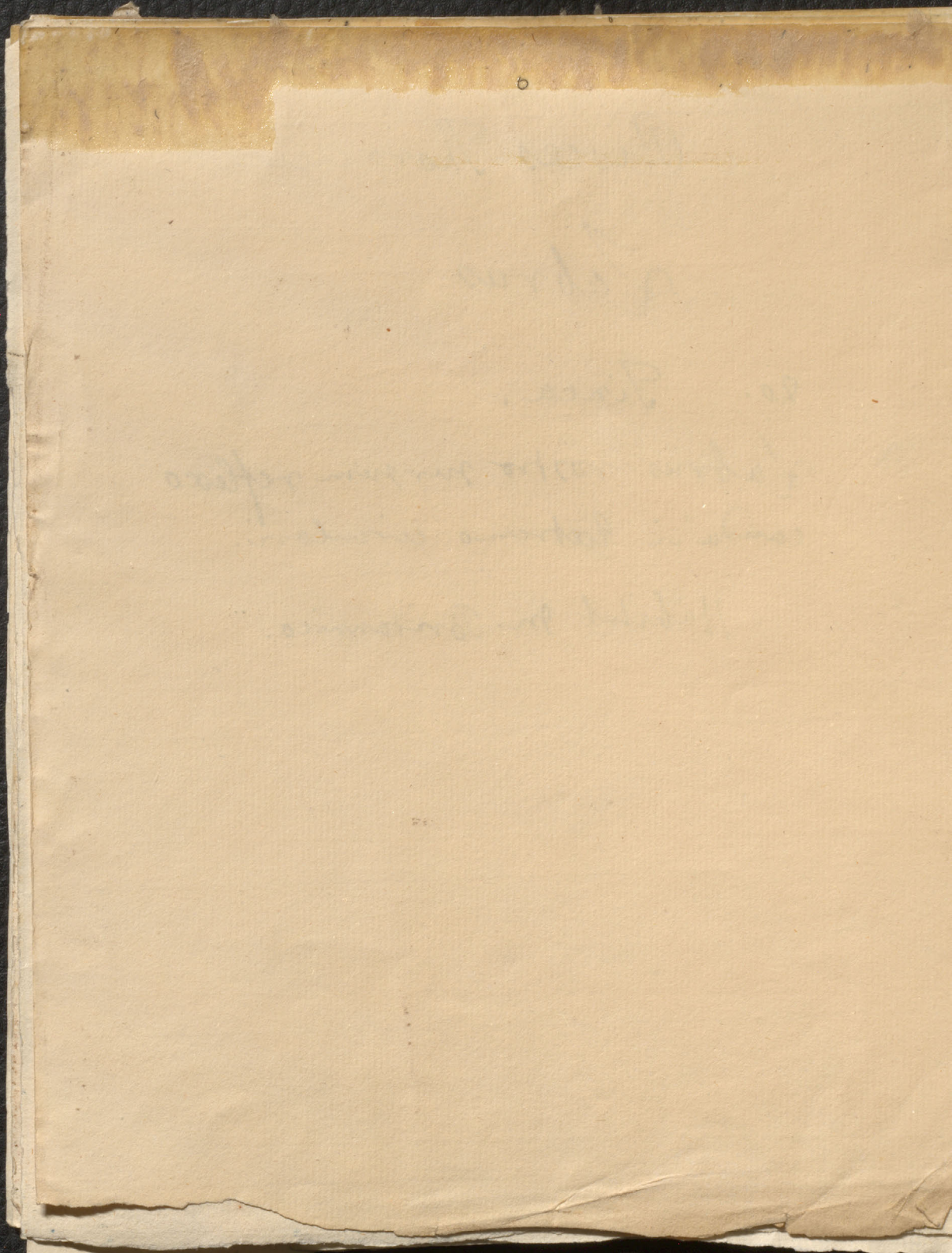
Labrus

20. Tinca.

20

Labrus rostro sursum reflexo  
cauda in extremo circulari.

Habitat in Britannico.



PISCES ABDOMINALES ~~Auratus~~

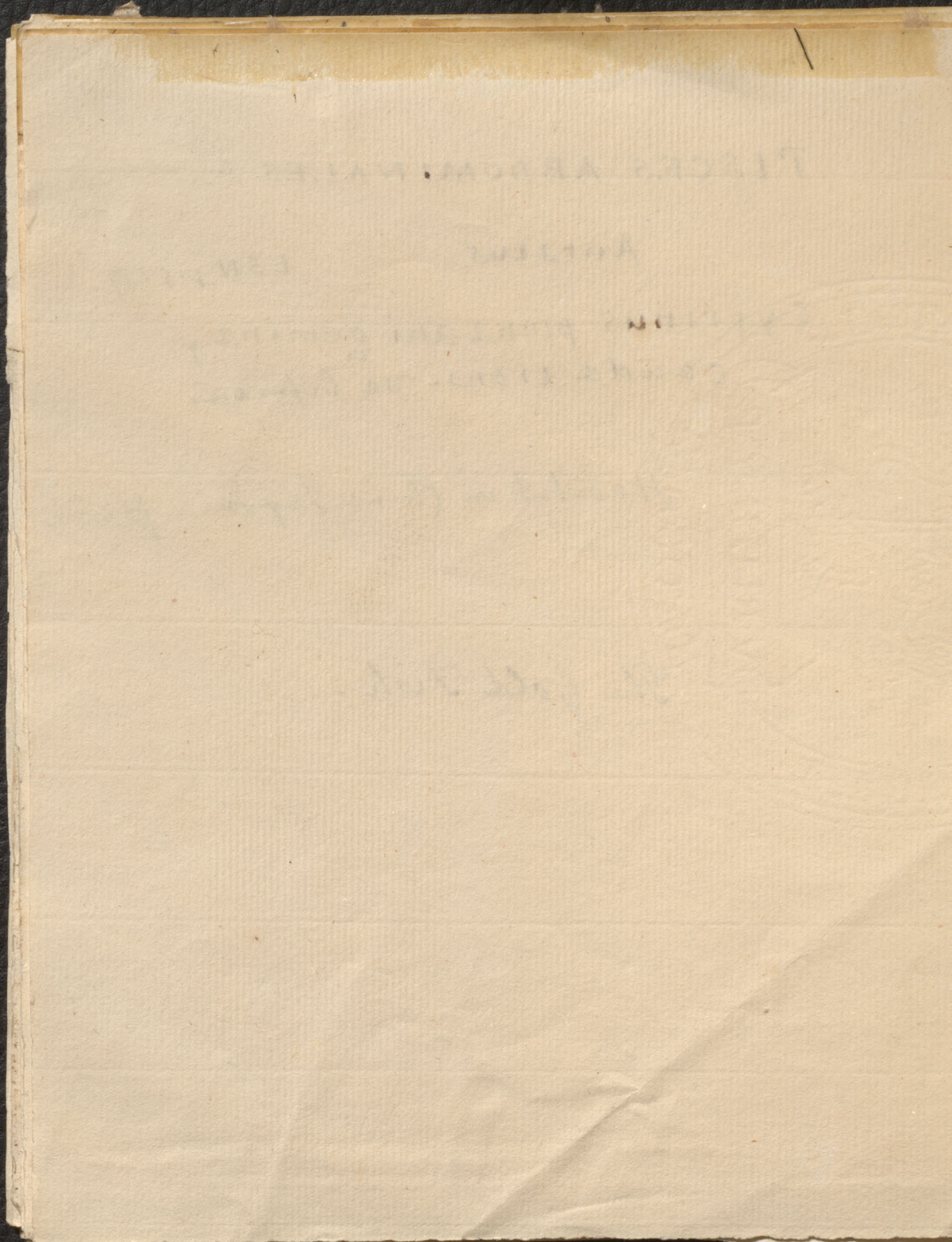
Auratus.

LSN p. 527

Cyprinus pinnae geminae,  
cauda transversa bifurca.

Habitat in China Japonia fluvij.

The Gold Fish.



PISCES ABDOMINALES Cyprinus.

RUTILUS L.S.N. 529. E. noo.

Cyprinus pinna Ani radiis 12 rubricunda  
In succ. 372. Art. gen. 3. syn. 10. spec. 10  
Cyprinus iride pinnis ventris ac. ani  
pterumq<sub>3</sub> rubentibus. Gron. mus. 1. n. 8  
habitat in Europa lacubus, prurit cum  
Caltha palustri. Pinnae Ventrals  
Obtusa.

THE ROACH

LETTER AND ANSWERS TO THE

REV. J. W. B. B. B.

THE REV. J. W. B. B. B.

THE REV. J. W. B. B. B.

THE REV. J. W. B. B. B.

THE REV. J. W. B. B. B.

THE REV. J. W. B. B. B.

THE REV. J. W. B. B. B.

THE REV. J. W. B. B. B.

THE REV. J. W. B. B. B.

THE REV. J. W. B. B. B.

22