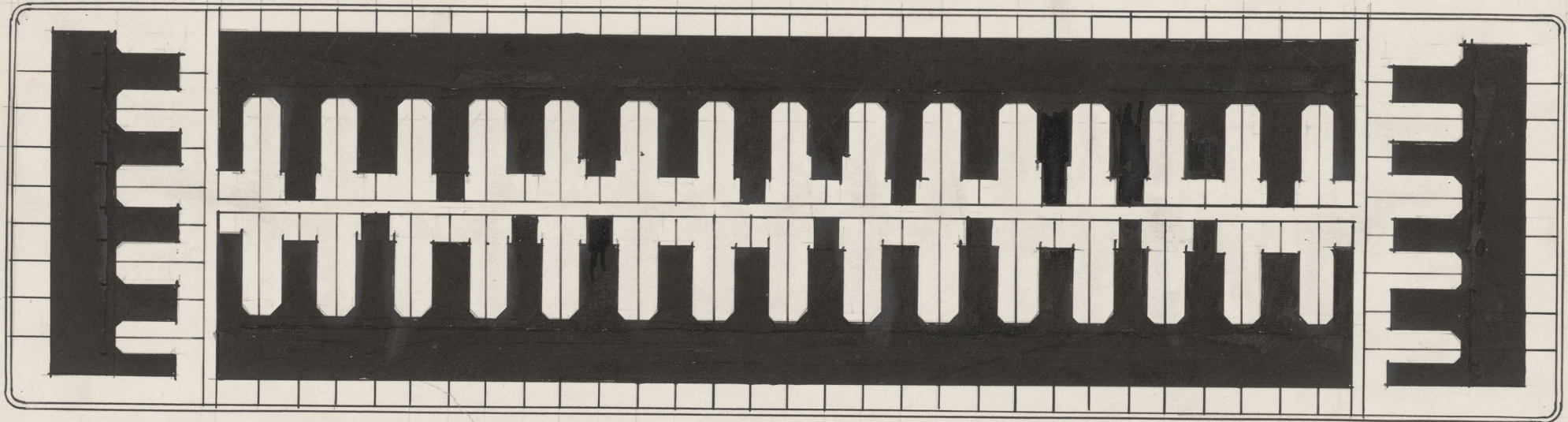
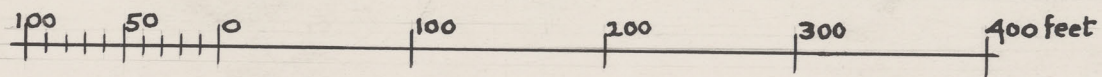


FIG. XIV.

BLOCK WITH REGISTERED SUBDIVISION
1020' x 260'

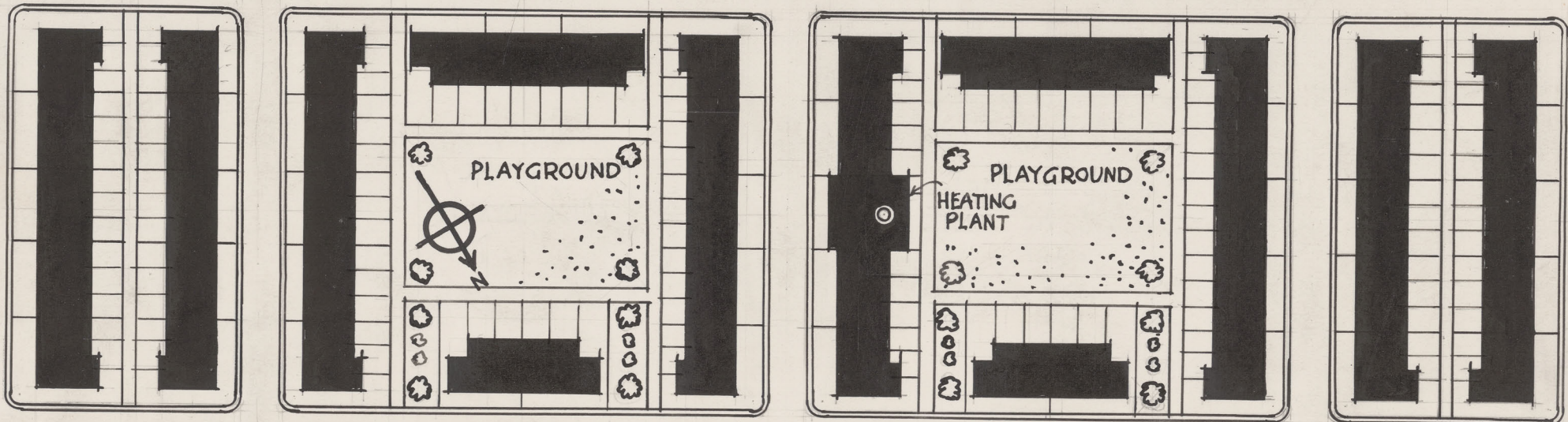


78 LOTS



RESUBDIVISION OF BLOCK

TO GIVE 49 UNITS OF 3 STOREY COMPOSITE HOUSING - 147 DWELLINGS
POPULATION OF BLOCK 1078 PERSONS = 808 CHILDREN + 539 ADULTS 1347 SOULS



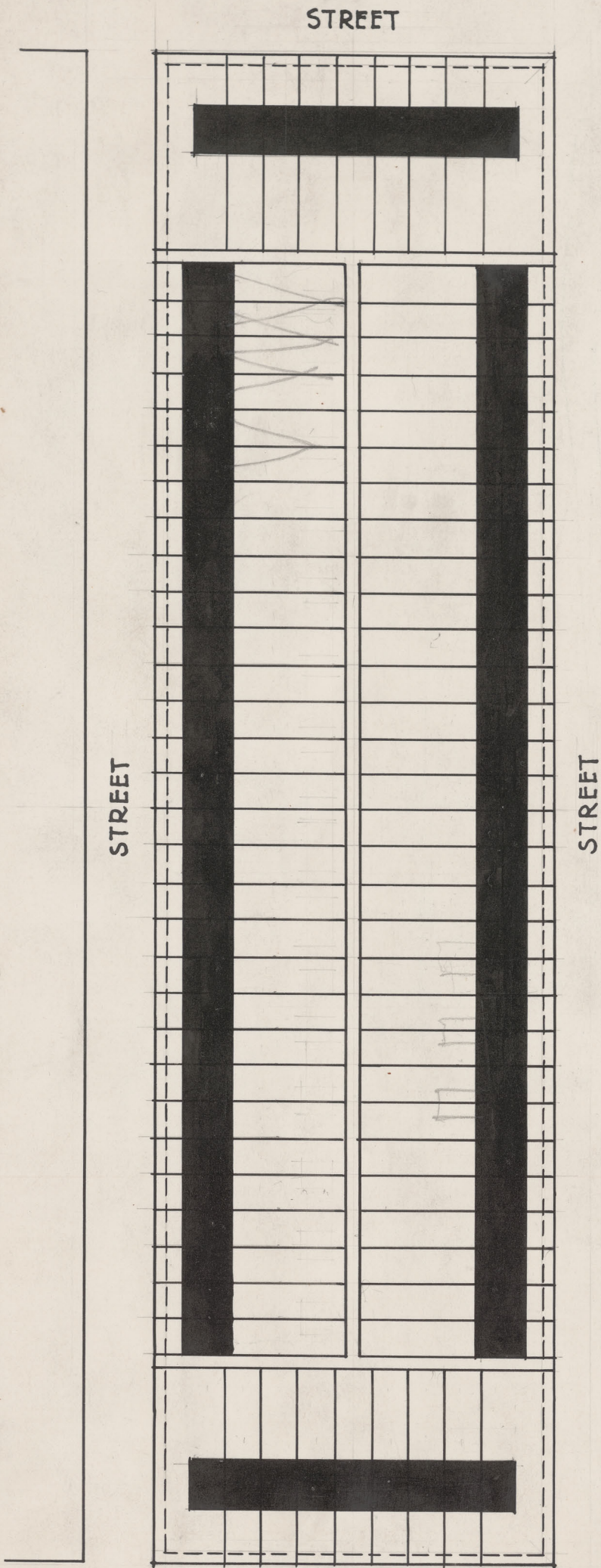
WITH **B** DWELLINGS

NOBBS & HYDE
1935

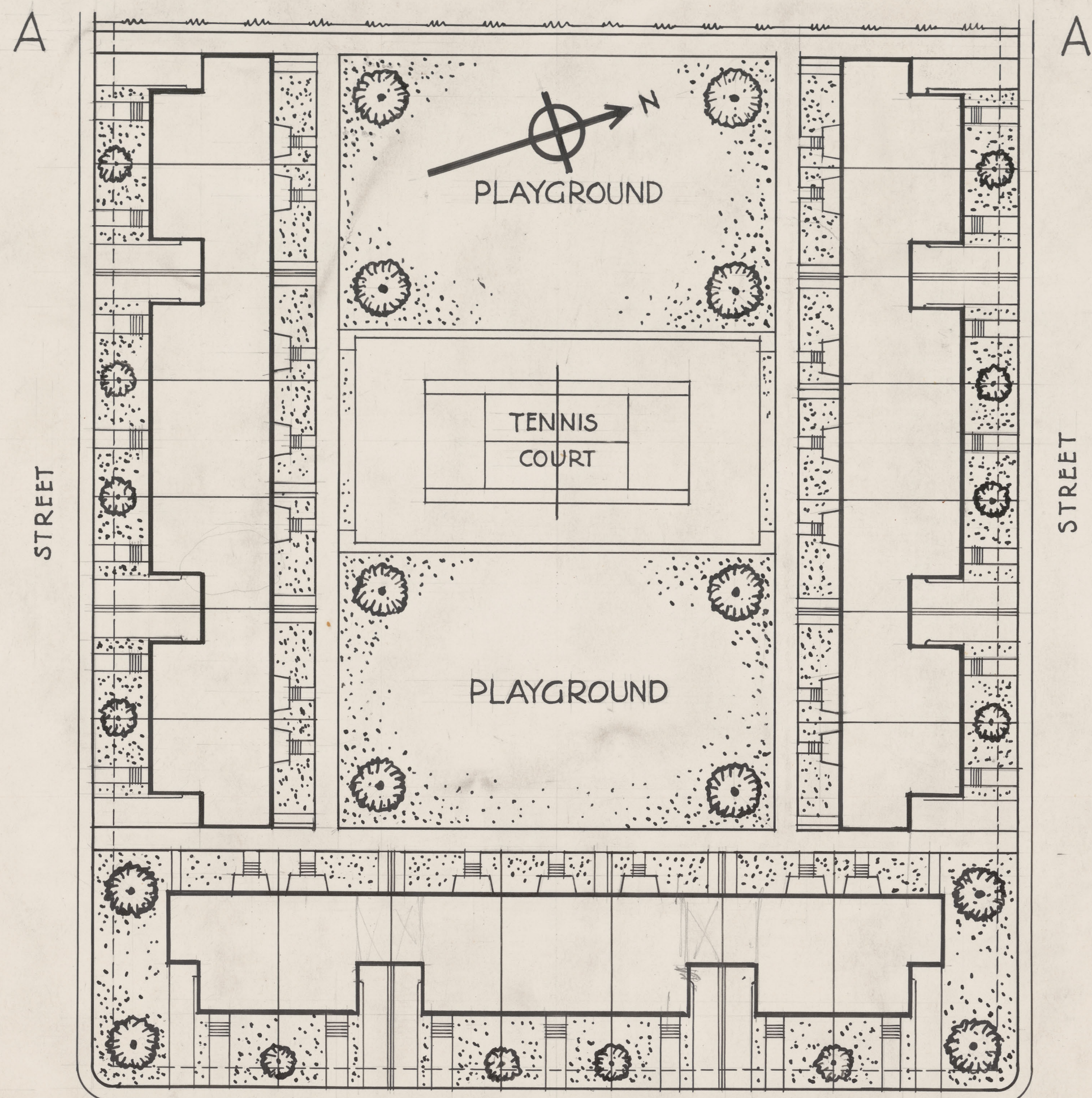


BLOCK PLAN FIG. XVII.

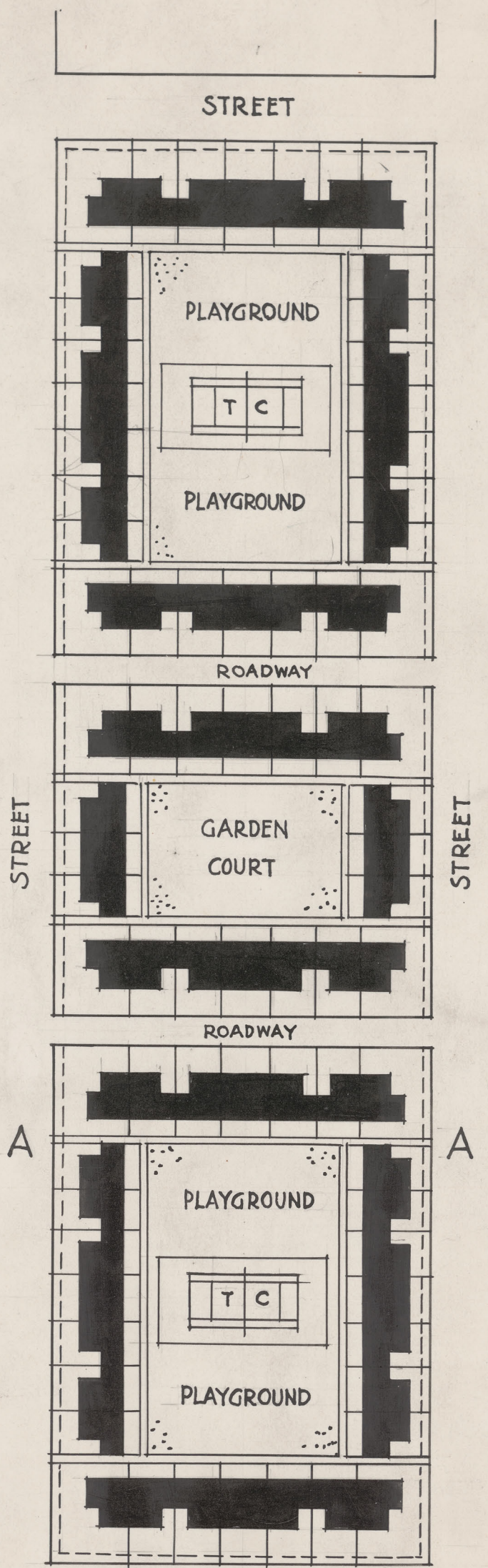
ONE MONTREAL BLOCK RE-SUBDIVIDED FOR COMMUNITY HOUSING
TO GIVE 76 LOTS OF AVERAGE AREA 1950 SQ. FT. (42 HAVING E. & W. EXPOSURES)
WITH PLAYGROUNDS TENNIS COURTS & GARDEN COURT (1200 SQ. FT. PER HOUSE)
IN LIEU OF 78 LOTS 125' x 25' AREA 3125 SQ. FT. 18 ONLY WITH E. & W. EXPOSURES
AND ALL WITHOUT COMMUNITY AMENITIES



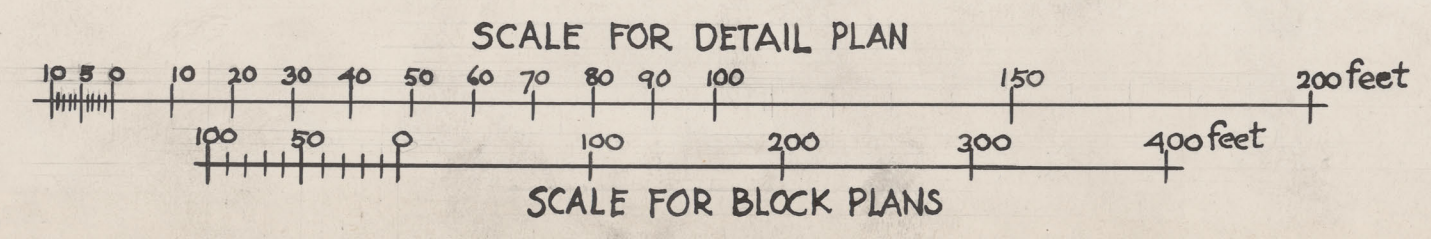
REGISTERED SUBDIVISION



STREET



PROPOSED RE-SUBDIVISION



NOBBS & HYDE
1934

*land built on
29.7%
6 acres. 12 2/3 houses per acre*

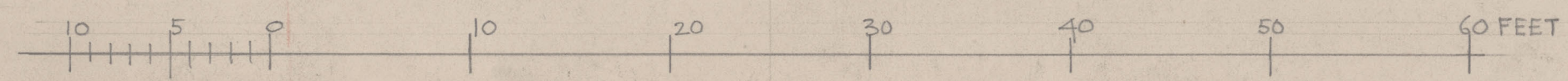


FLATS

COMPOSITE

FLATS

TYPICAL ELEVATION
'X' BLOCK HOUSING



NOBBS & HYDE
ARCHITECTS
MONTREAL
JUNE 1936