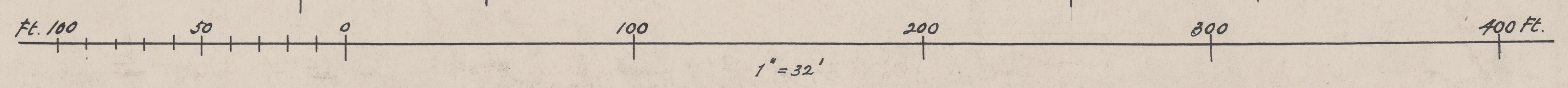


AREA FOR TEN BLOCKS = 7 ACRES.

DENSITY—27 FAMILIES TO THE ACRE

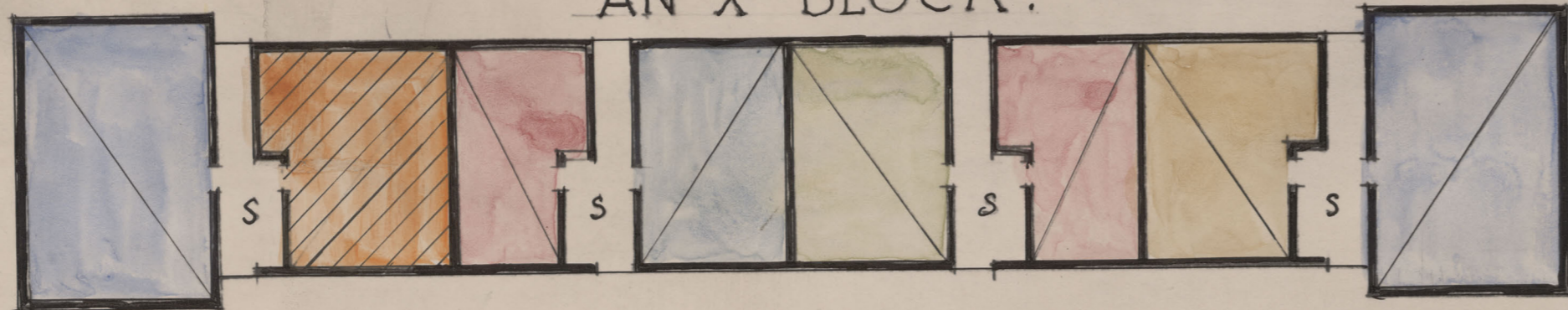


*Nobbs & Hyde, Architects.*  
*Montreal.*  
 1939

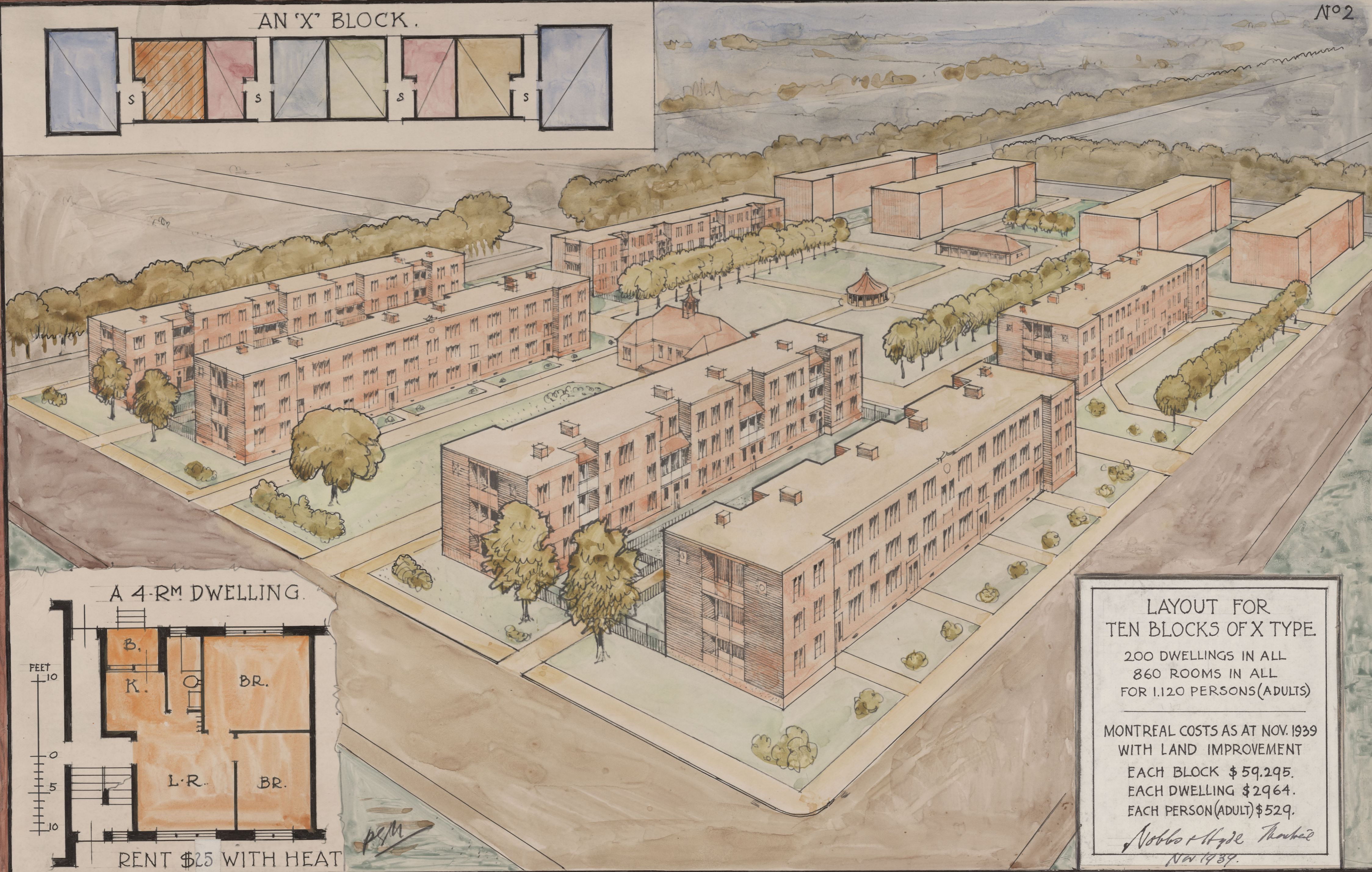
A HOUSING ESTATE FOR MONTREAL, WITH 'X' TYPE (THREE-STOREY) BLOCKS.



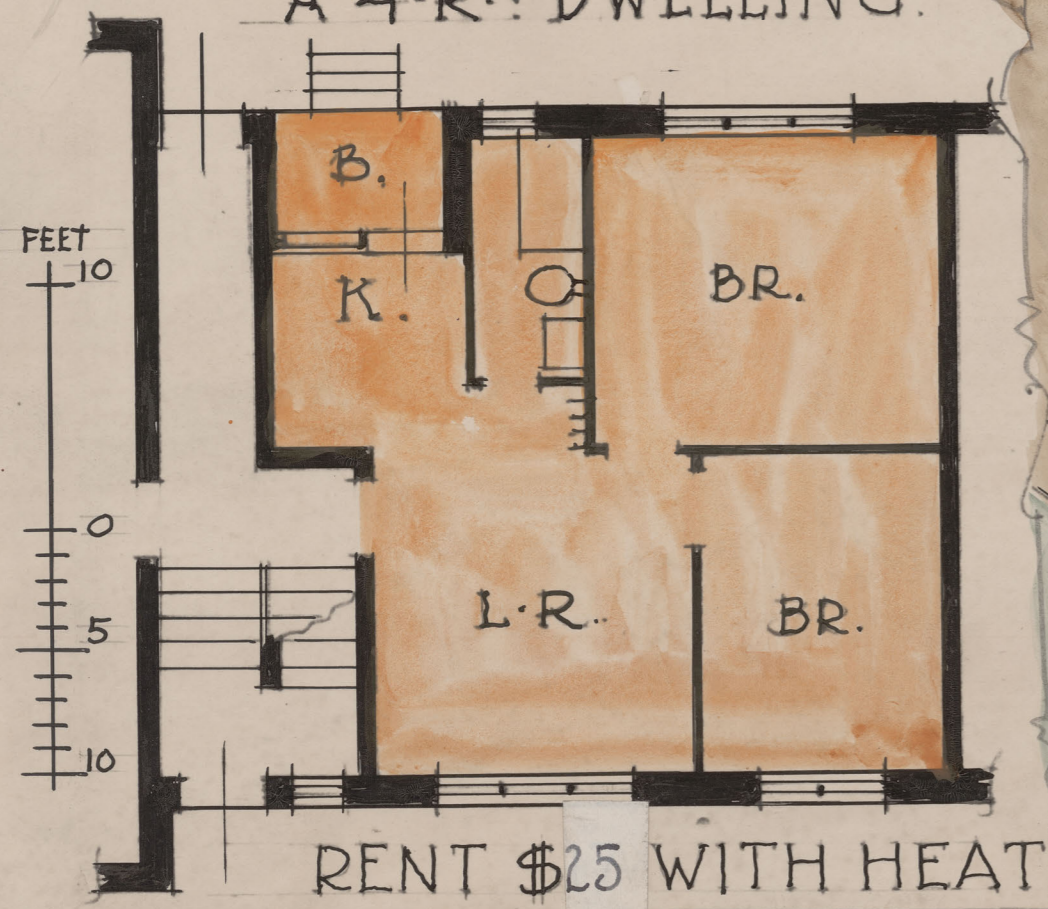
AN 'X' BLOCK.



Nº 2



A 4-RM DWELLING.



LAYOUT FOR  
TEN BLOCKS OF X TYPE.

200 DWELLINGS IN ALL  
860 ROOMS IN ALL  
FOR 1,120 PERSONS (ADULTS)

---

MONTREAL COSTS AS AT NOV. 1939  
WITH LAND IMPROVEMENT

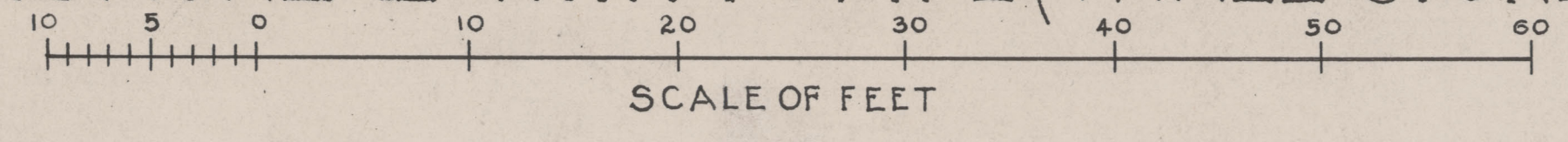
EACH BLOCK \$ 59,295.  
EACH DWELLING \$ 2964.  
EACH PERSON (ADULT) \$ 529.

*Nobbs & Hyde Architects*  
Nov 1939.

X-BLOCK COMMUNITY HOUSING ESTATE FOR MONTREAL



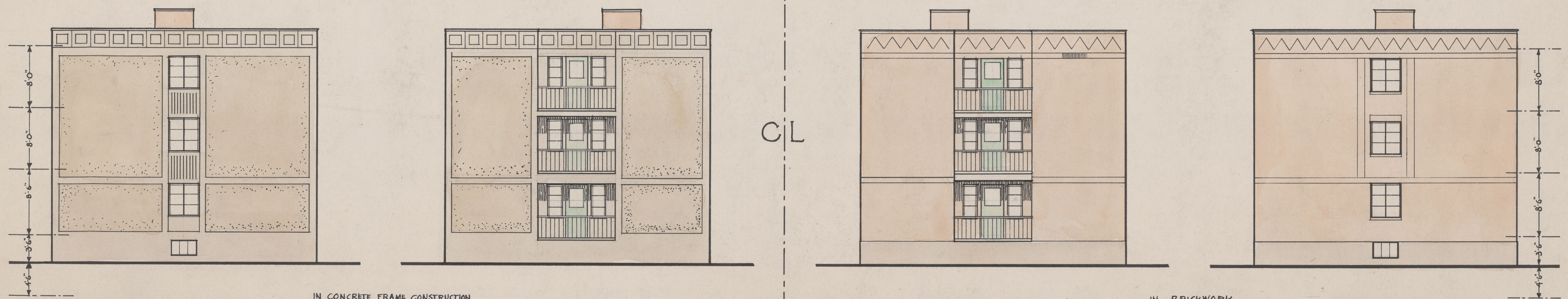
# A HOUSING ESTATE FOR MONTREAL WITH X TYPE (THREE-STOUREY) BLOCKS OF 20 DWELLINGS



OUTER ELEVATION



INNER ELEVATION



N. END

IN CONCRETE FRAME CONSTRUCTION

S. END

IN CONCRETE

CL

S. END

OR IN BRICK

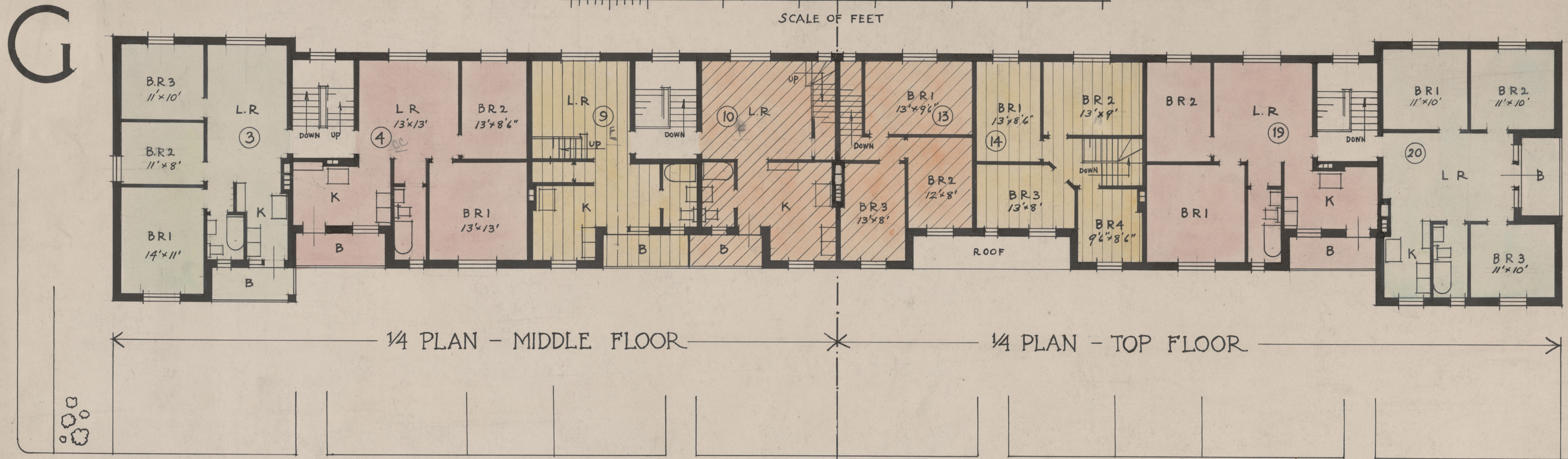
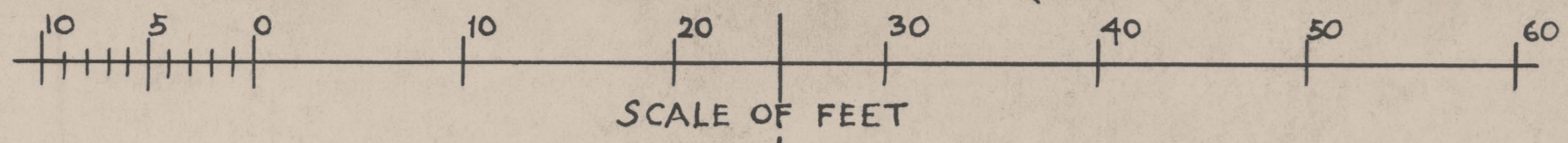
IN BRICKWORK

N. END



# A HOUSING ESTATE FOR MONTREAL, WITH 'X' TYPE (THREE-STOREY) BLOCKS OF 20 DWELLINGS

No 3



LANE AND PRIVATE YARDS

*Nobbs & Hyde, Architects*  
 Montreal  
 1939

