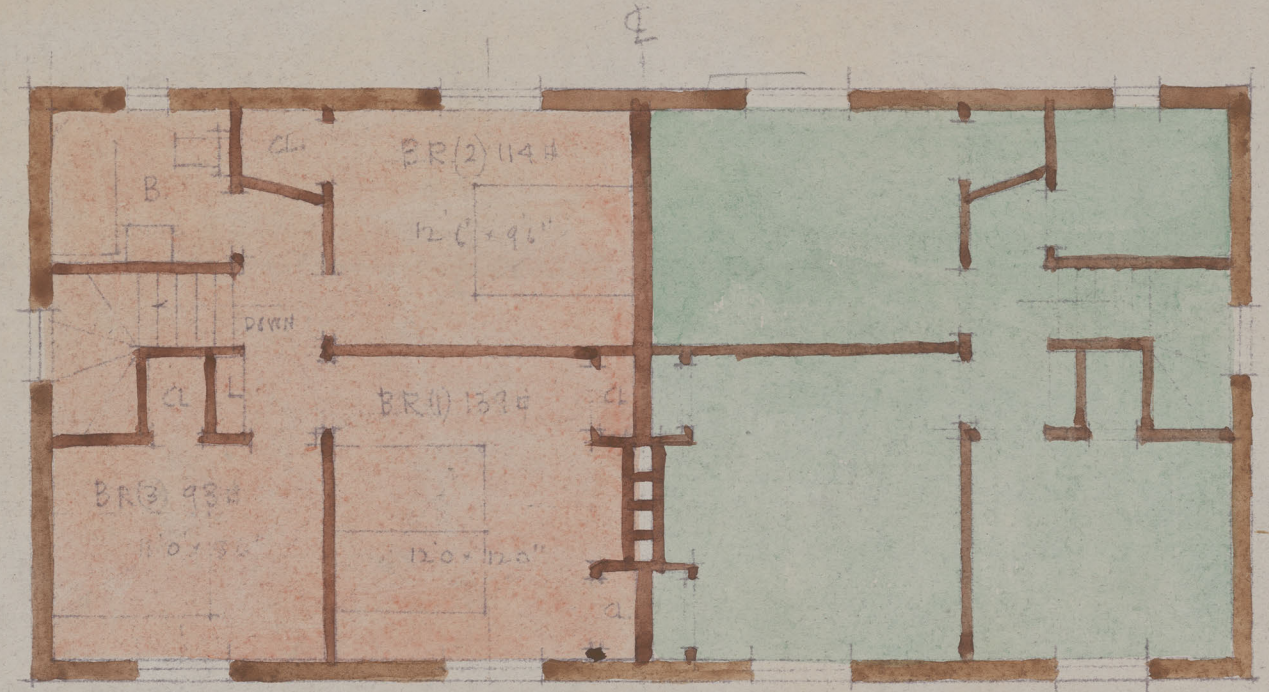


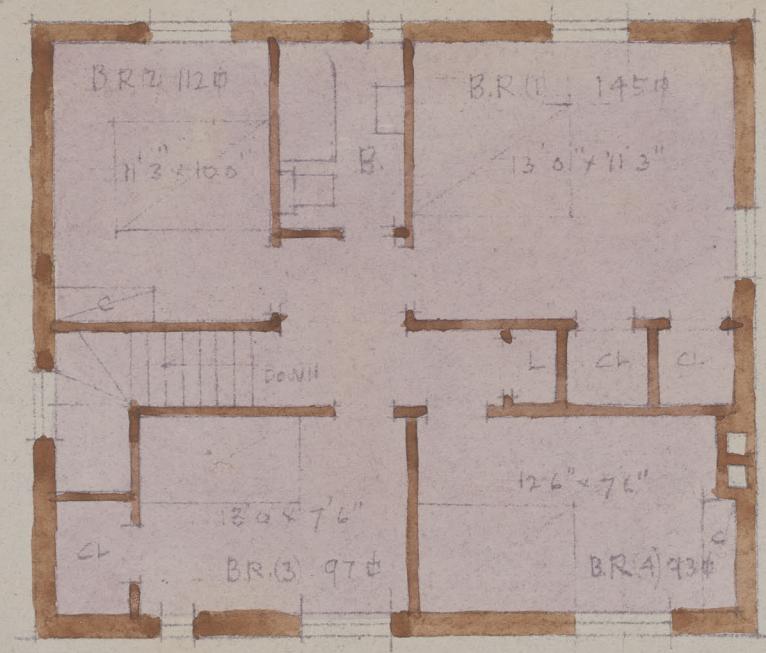
PROPOSED EXPERIMENTAL HOUSING ESTATE MONTREAL

DRAWING N° 3

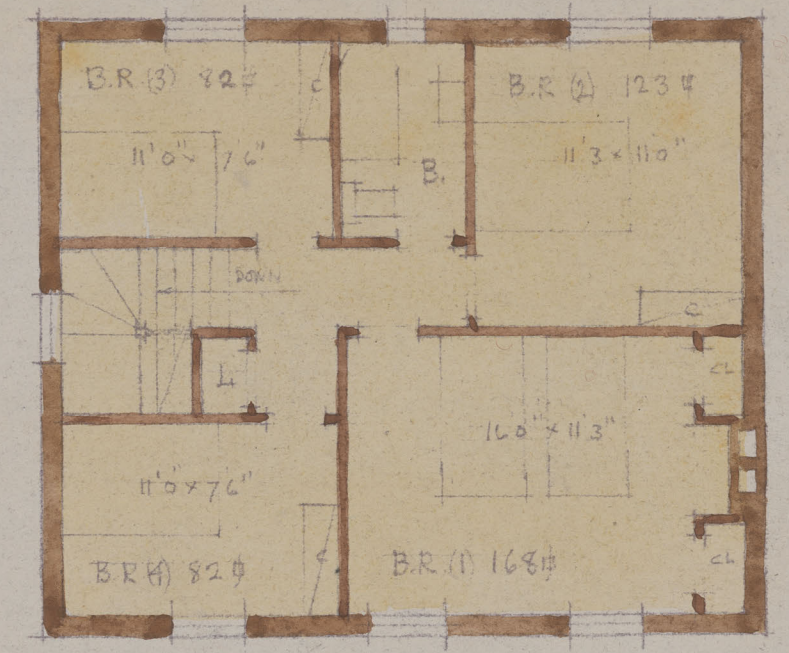
'E' SEMI-DETACHED & SINGLE COTTAGES



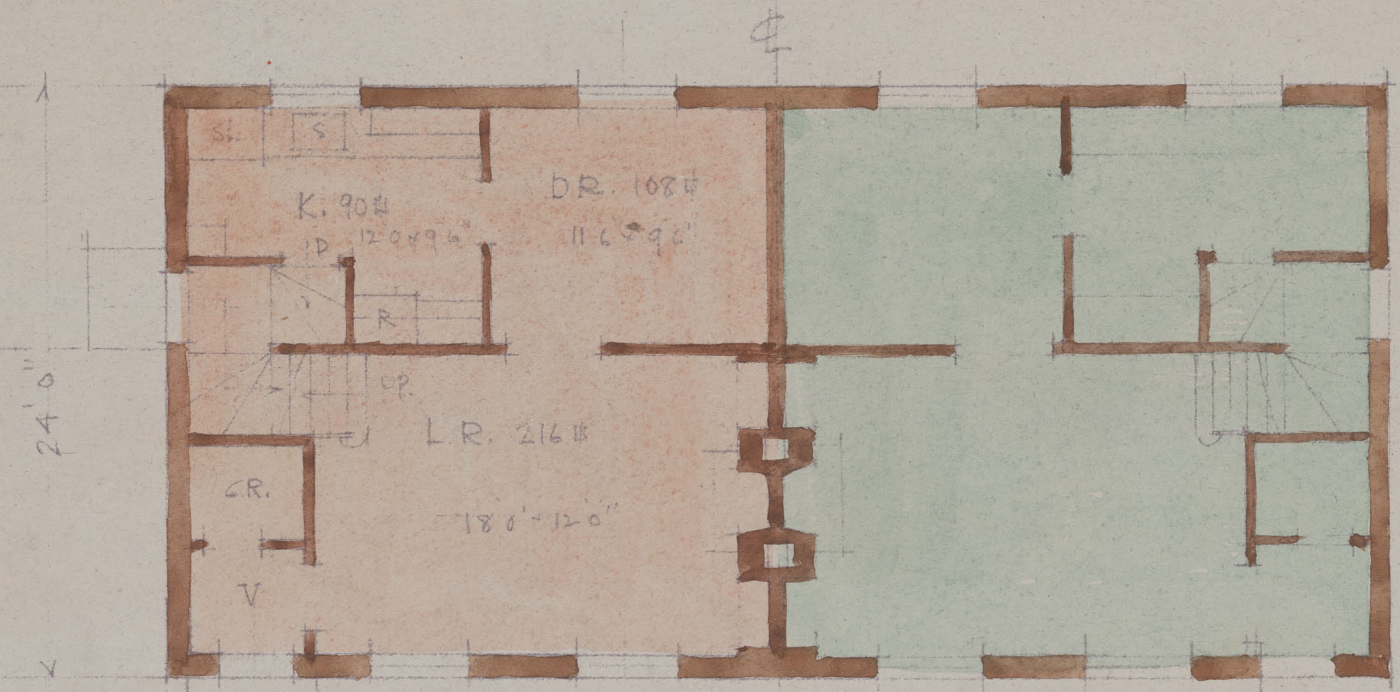
UPPER FLOOR



UPPER FLOOR

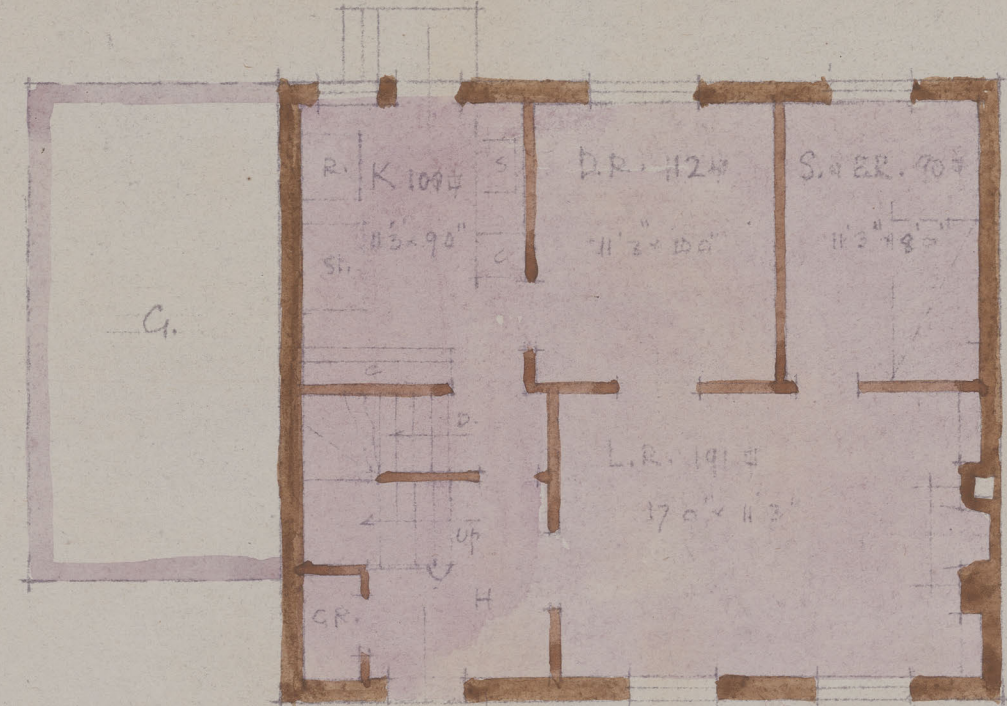


UPPER FLOOR



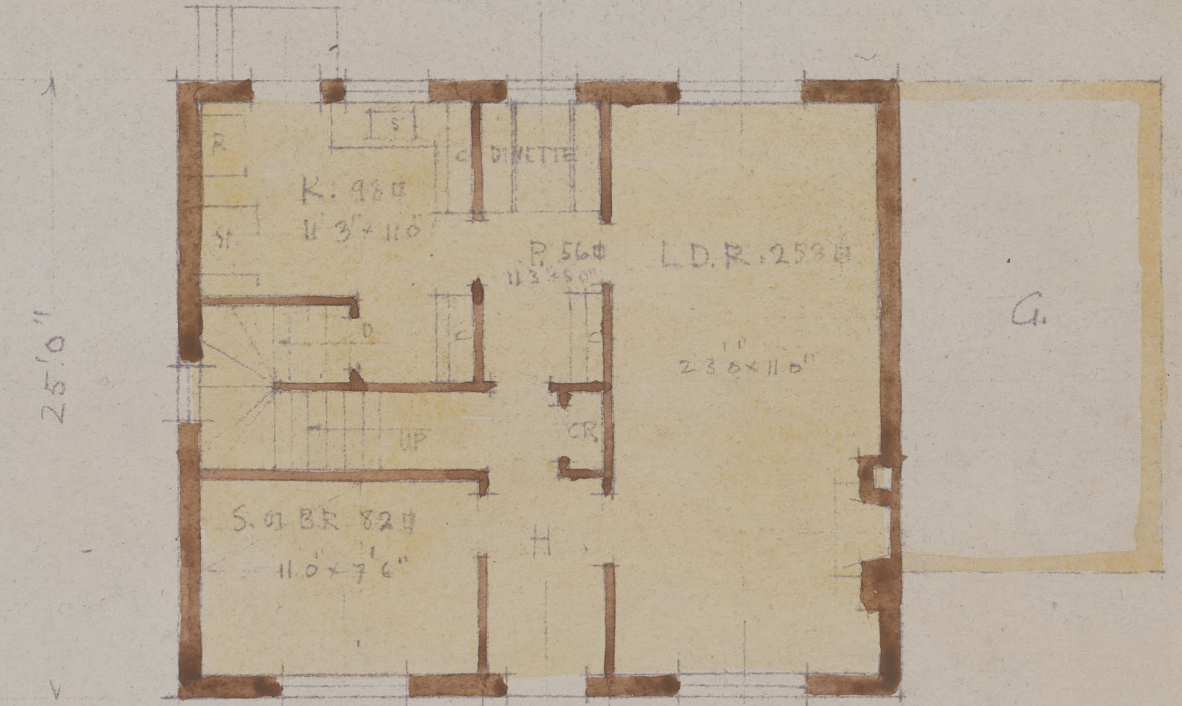
GROUND FLOOR

SEMI-DETACHED COTTAGE



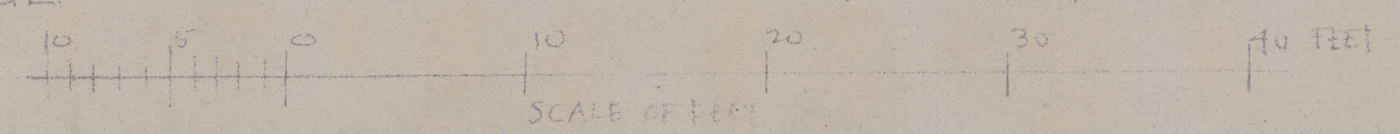
GROUND FLOOR

COTTAGE I



GROUND FLOOR

COTTAGE II

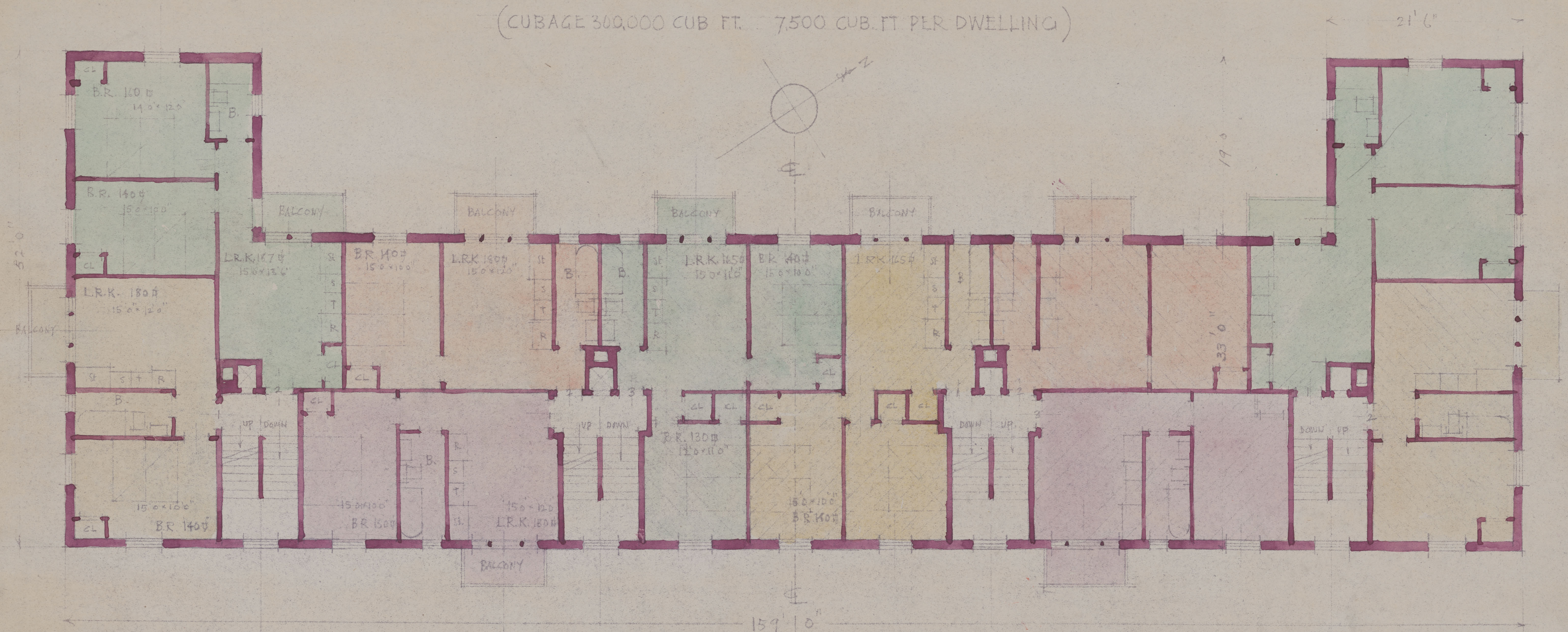


*Percy E. Hobbs*

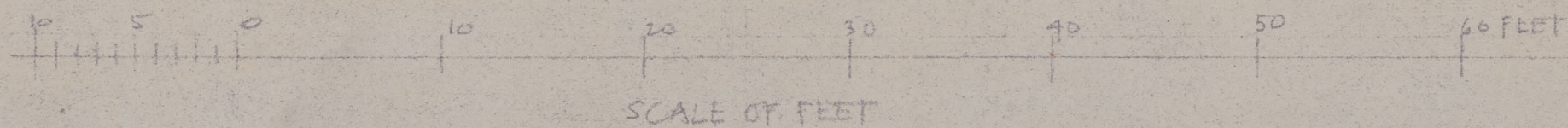
MONTREAL OCT 5<sup>th</sup> 1944



# 'H' HOUSING SLUM REPLACEMENT. BLOCK OF 40 DWELLINGS (CUBAGE 300,000 CUB. FT. 7,500 CUB. FT. PER DWELLING)



TYPICAL FLOOR PLAN



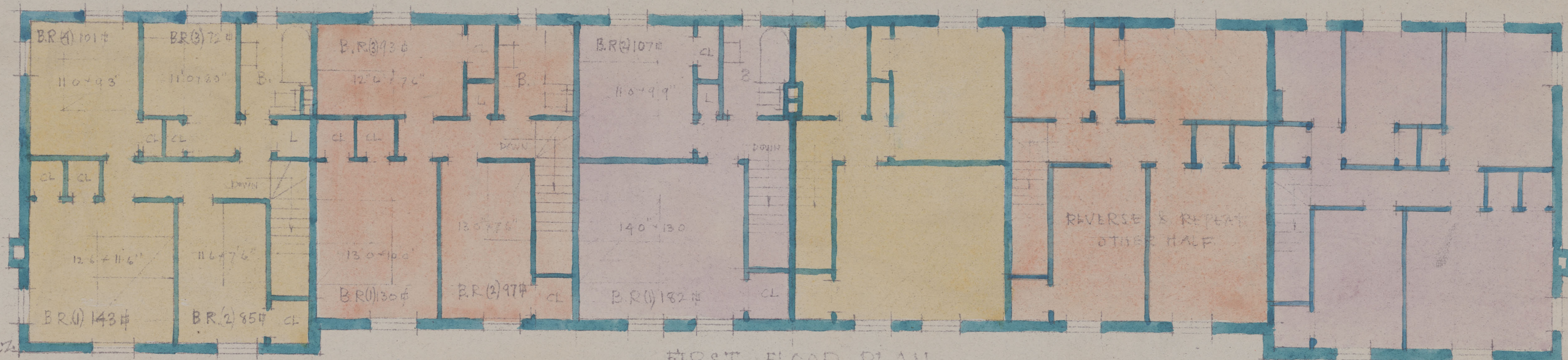
*Prof. E. Halls*

MONTREAL OCT 5<sup>TH</sup> 1944.

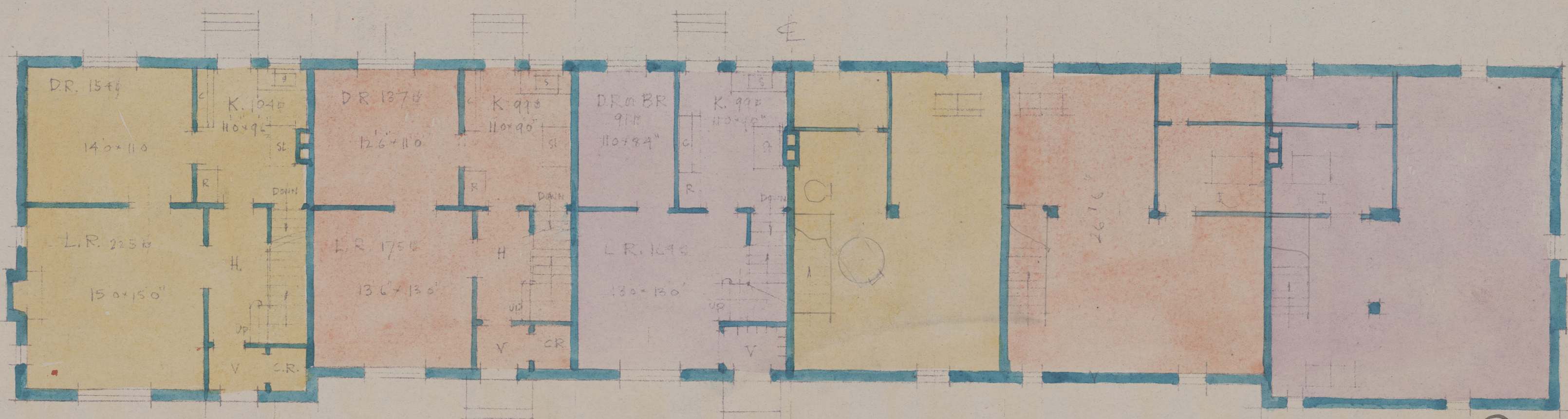


PROPOSED EXPERIMENTAL HOUSING ESTATE MONTREAL  
 'F' HOUSING BLOCK OF 6 DWELLINGS

DRAWING N° 4.



FIRST FLOOR PLAN



1/2 GROUND FLOOR PLAN

1/2 BASEMENT PLAN

SCALE OF FEET

Percy S. Watts.

MONTREAL OCT 15 1944



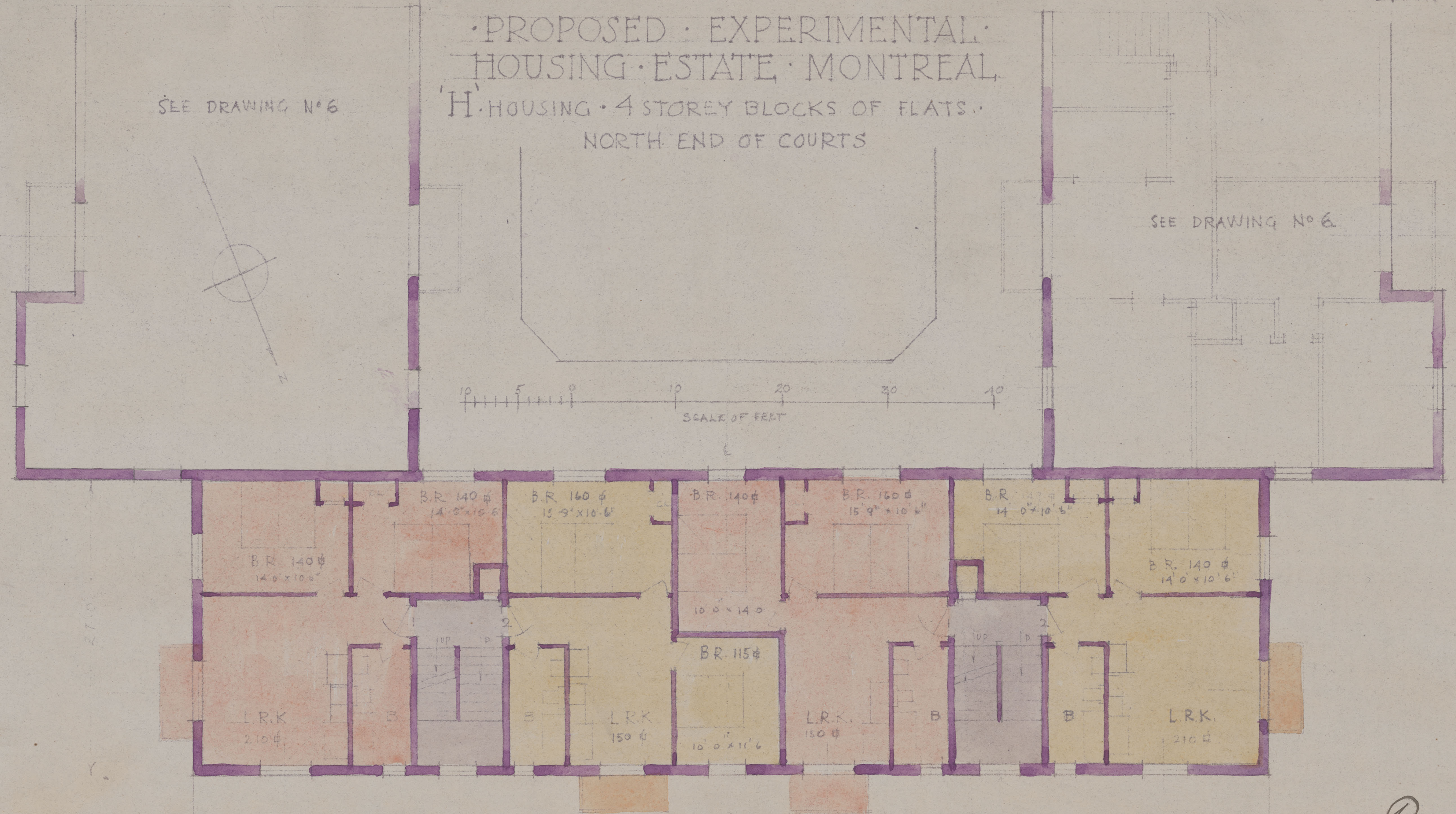
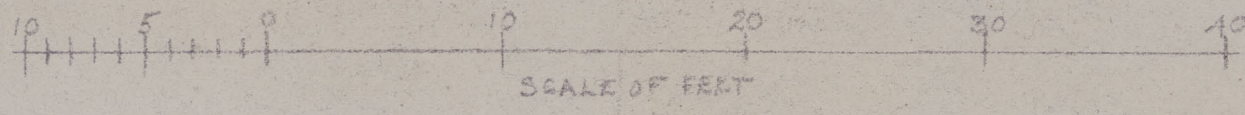
PROPOSED EXPERIMENTAL HOUSING ESTATE MONTREAL  
'H' HOUSING 4 STOREY BLOCKS OF FLATS  
NORTH END OF COURTS

SEE DRAWING No 6

SEE DRAWING No 6

32 DWELLINGS

32 DWELLINGS



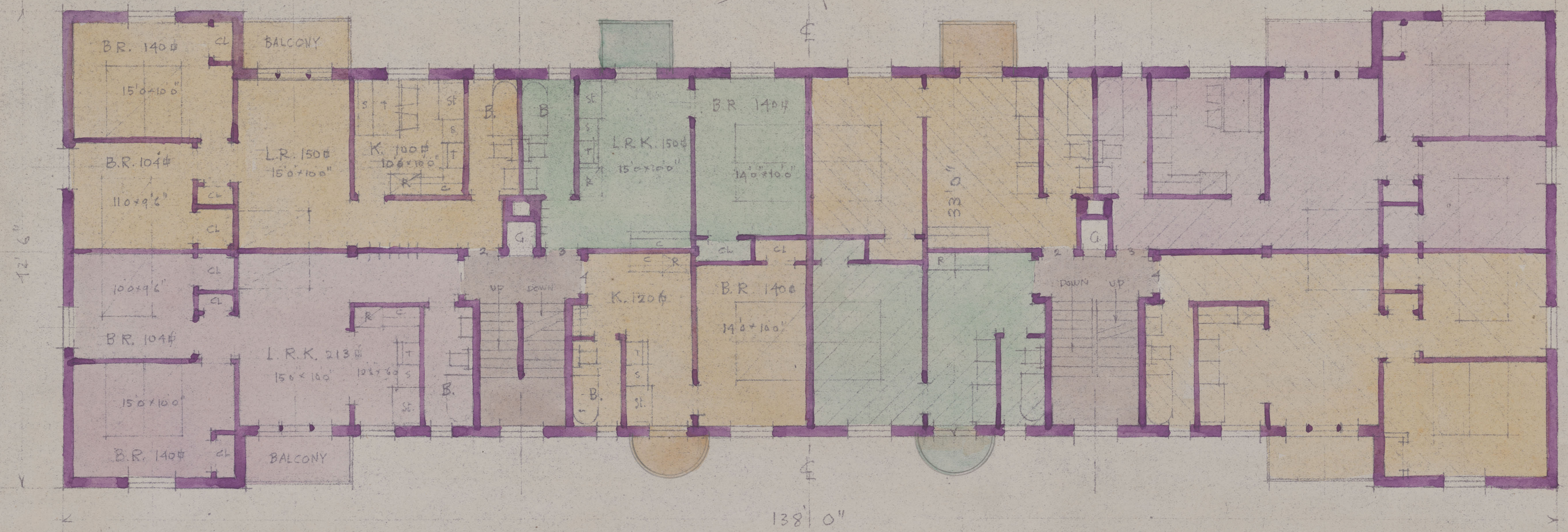
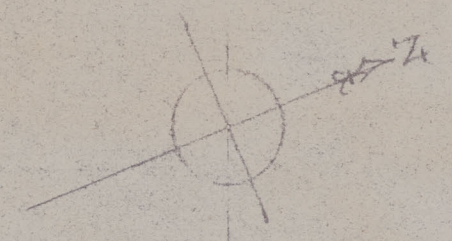
16 DWELLINGS  
TYPICAL FLOOR PLAN

*Percy S. Watts.*  
MONTREAL OCT 5 1944.

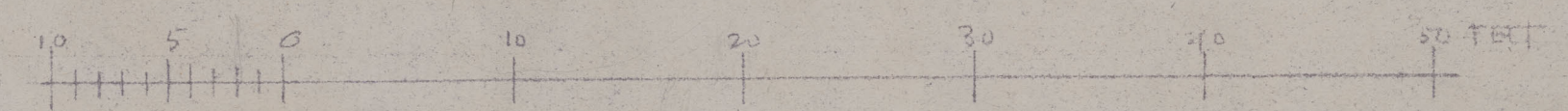


# PROPOSED EXPERIMENTAL HOUSING ESTATE MONTREAL

## 'H' HOUSING - 4 STOREY BLOCKS OF FLATS - 32 DWELLINGS



TYPICAL FLOOR PLAN



SCALE OF FEET

*Percy S. Noffs*  
MONTREAL OCT 5 1944