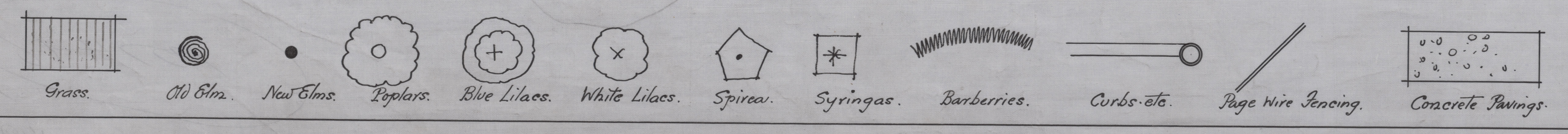
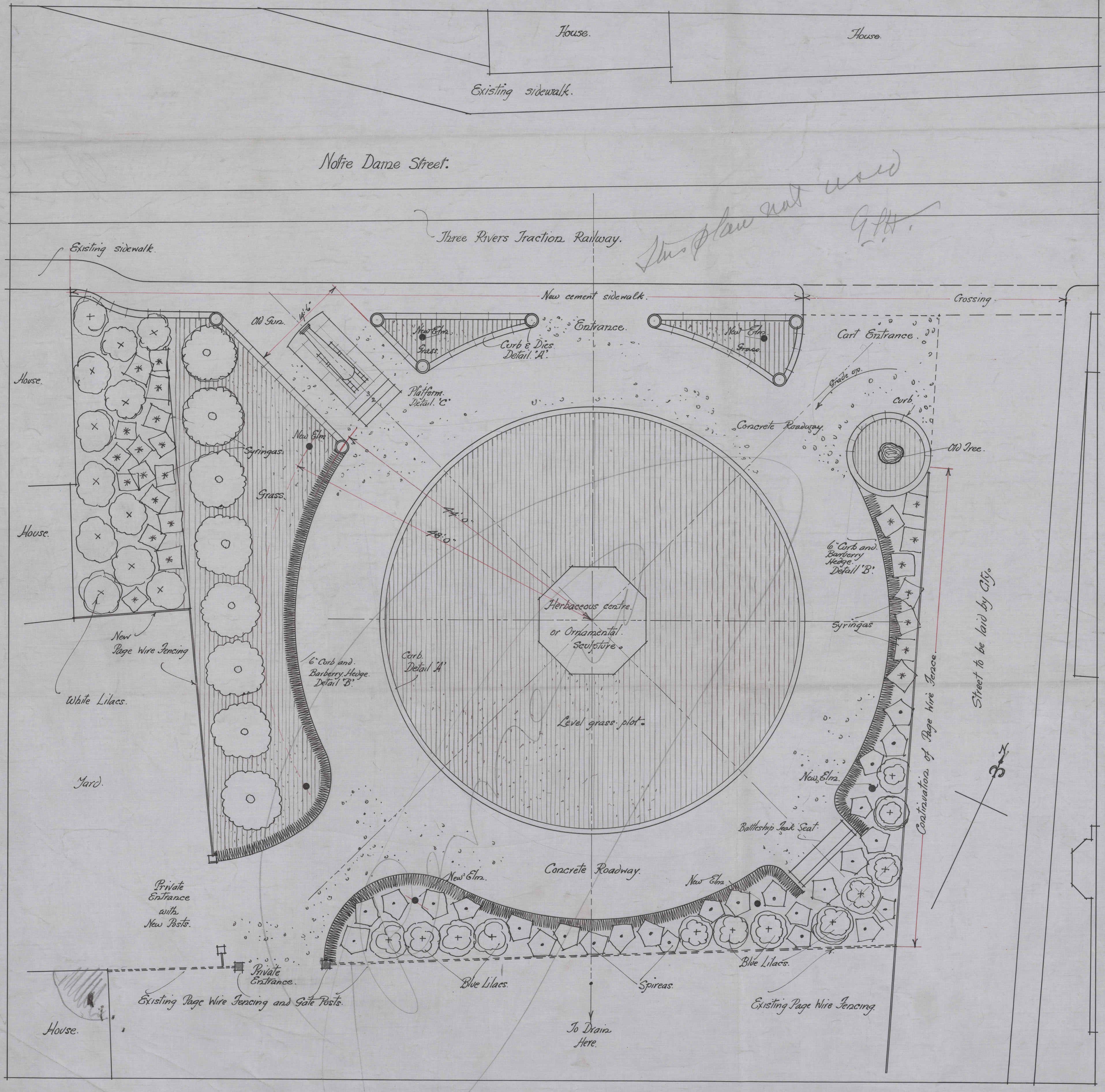


Place D'Armes Three Rivers. P.Q.
Proposed Development. Scale: $\frac{1}{8}'' = 1'-0''$.

NOBBS & HYDE
ARCHITECTS
14 PHILLIPS SQUARE, - MONTREAL.

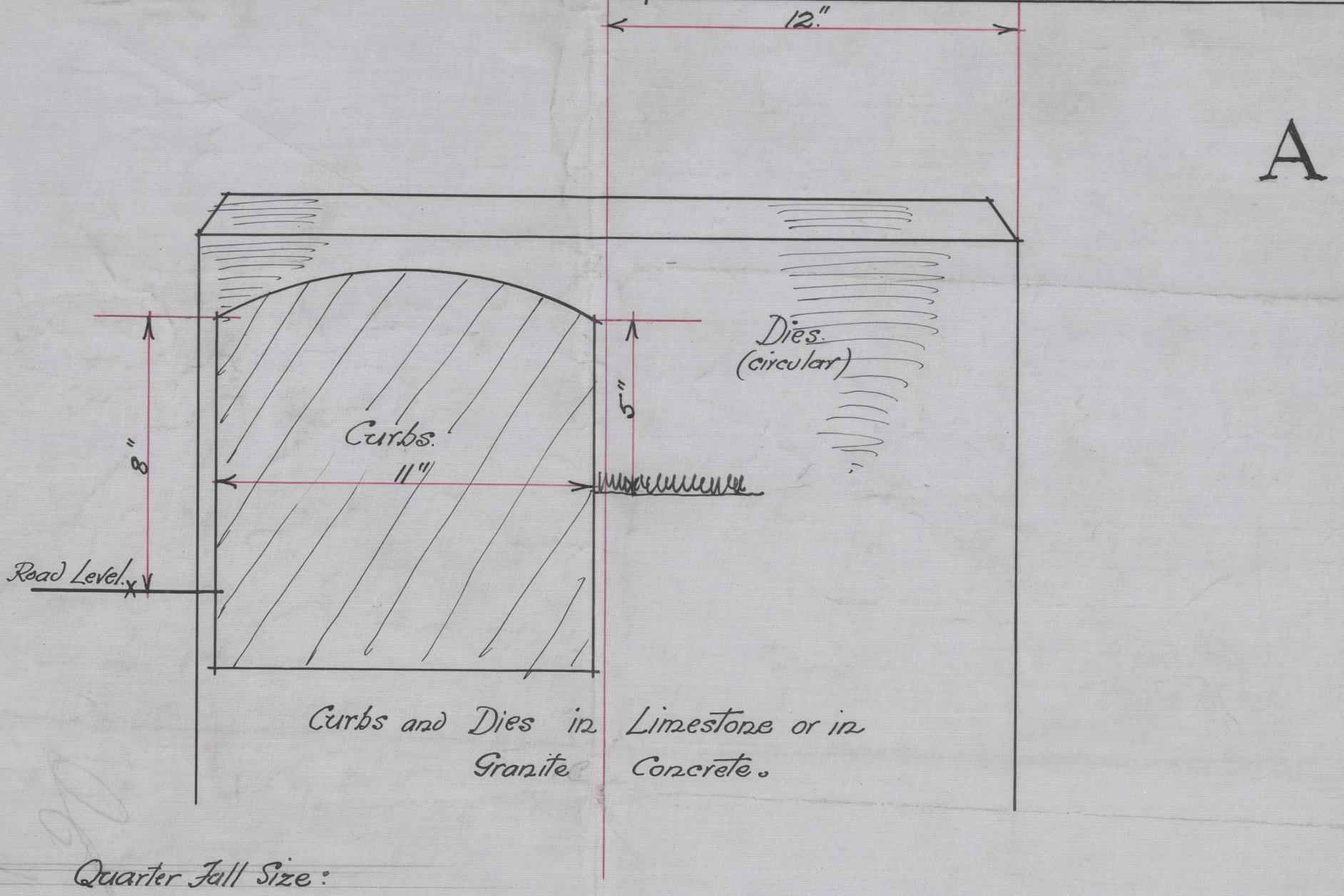
OPERATION No. 149.
DRAWING No. 22
SCALE $\frac{1}{8}'' = 1'-0''$
DATE 12-5-19. BY J.B.



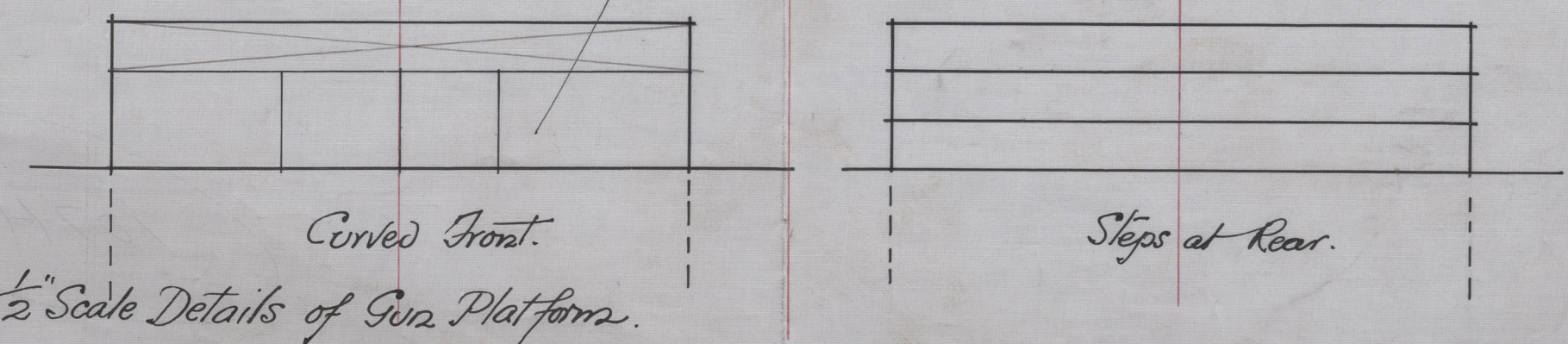
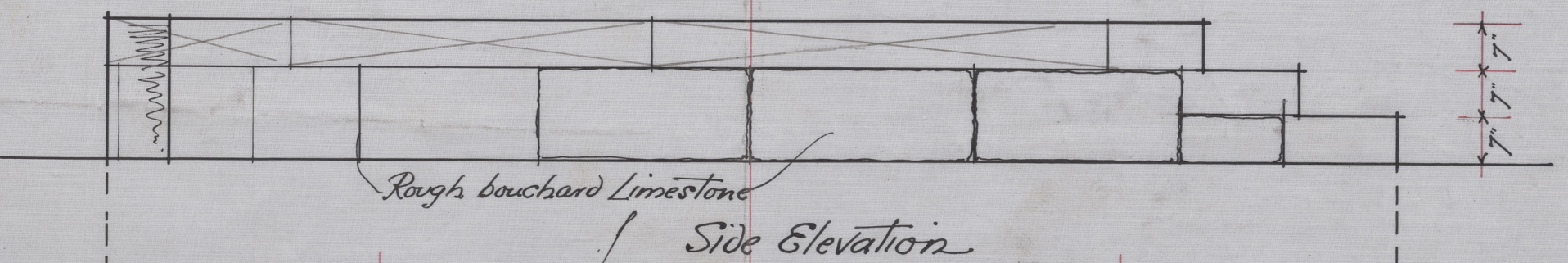
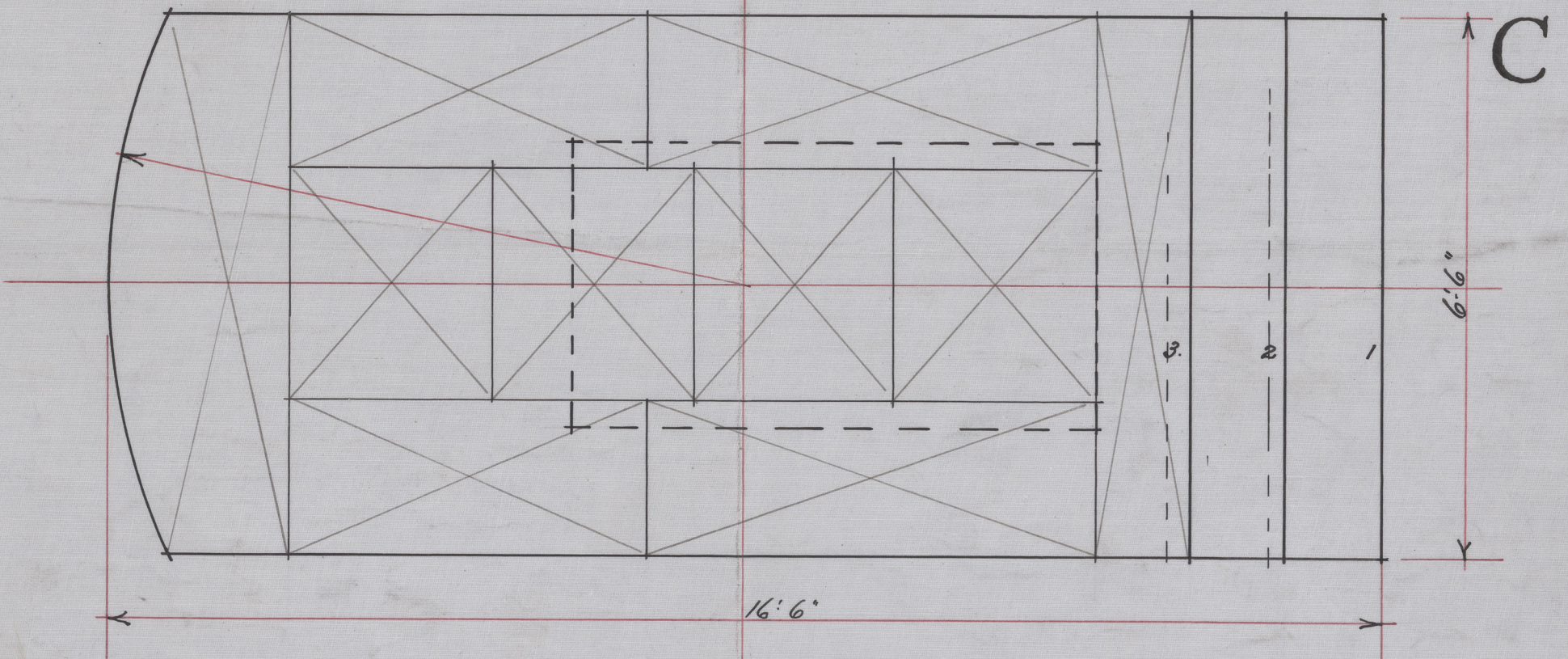
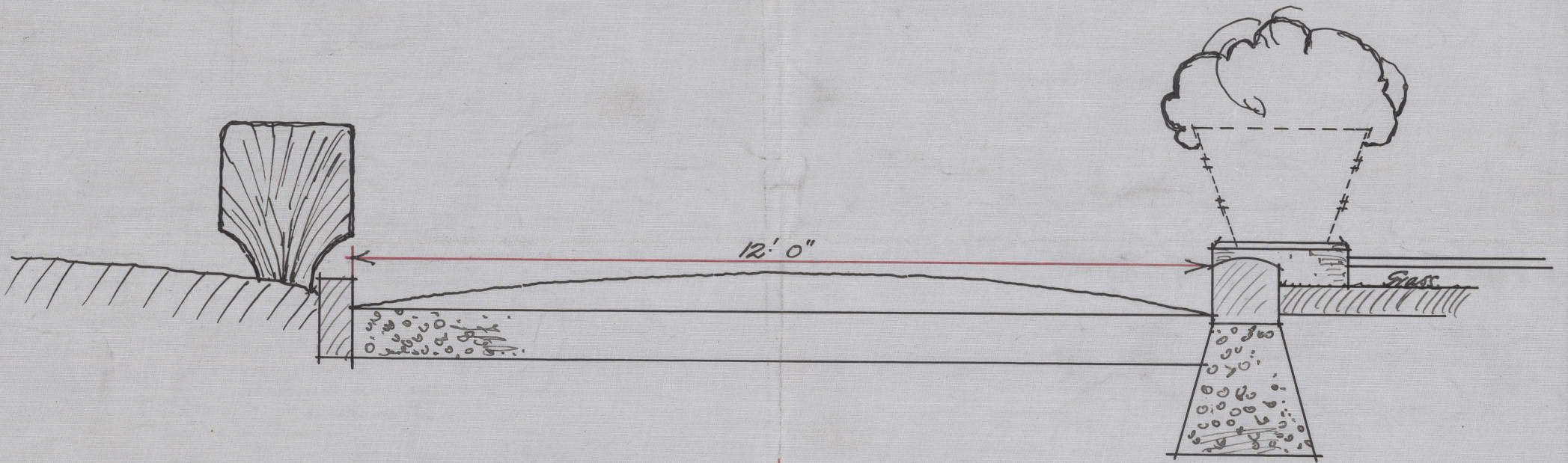
Place D'Armes, Three Rivers, P.Q.
Proposed Development: Details.

NOBBS & HYDE
ARCHITECTS
14 PHILLIPS SQUARE, - MONTREAL.

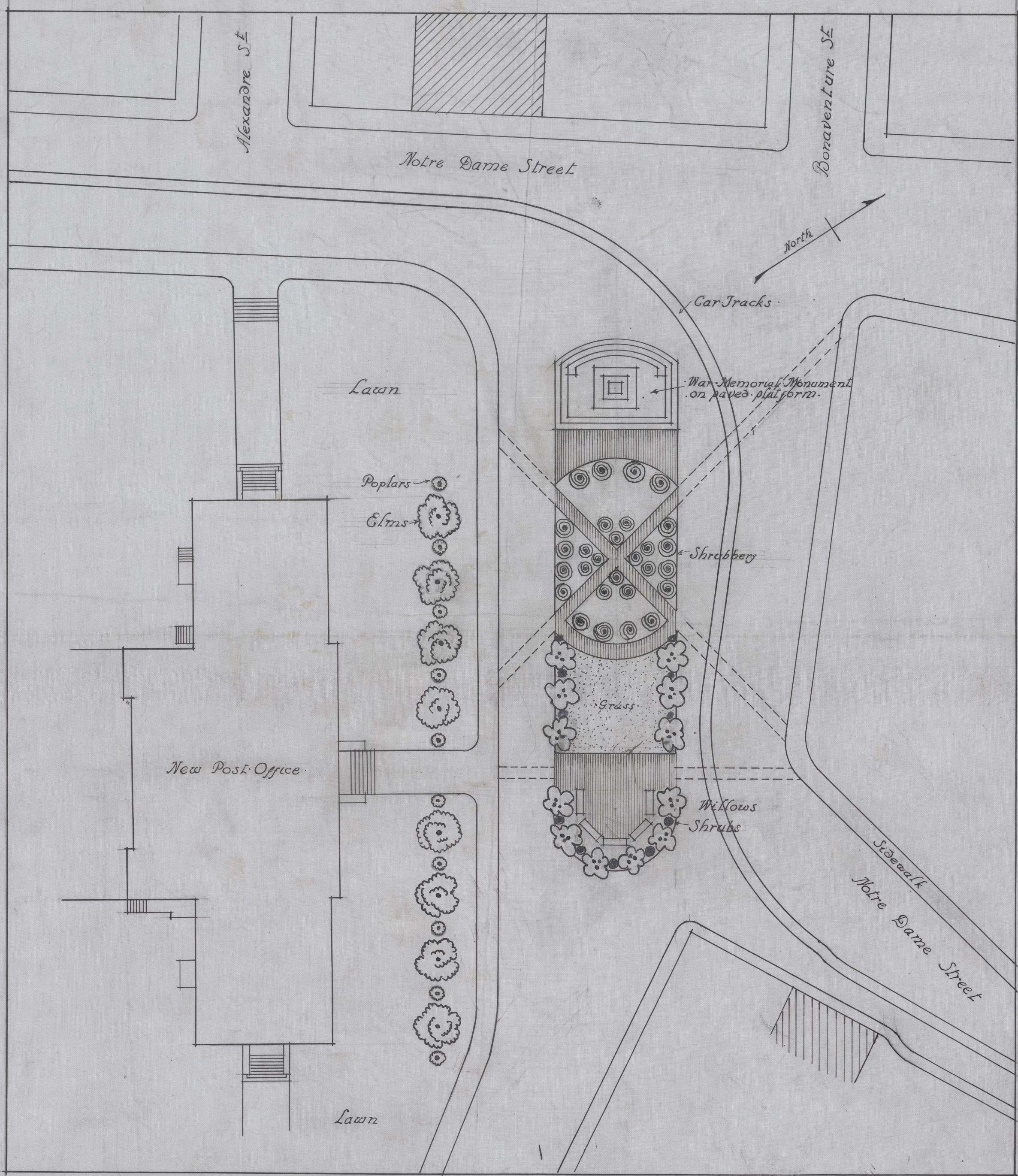
OPERATION NO. 149
DRAWING NO. 23
SCALE $\frac{1}{4}$ " = 1'0" and $\frac{1}{2}$ " = 1'0"
DATE 12-5-19 BY J.B.



$\frac{1}{2}$ " = 1'0" Scale. Details



$\frac{1}{2}$ " Scale Details of Gun Platform.



*Suggested Planting in Connection with site for
Proposed War Memorial Three Rivers P.Q.*

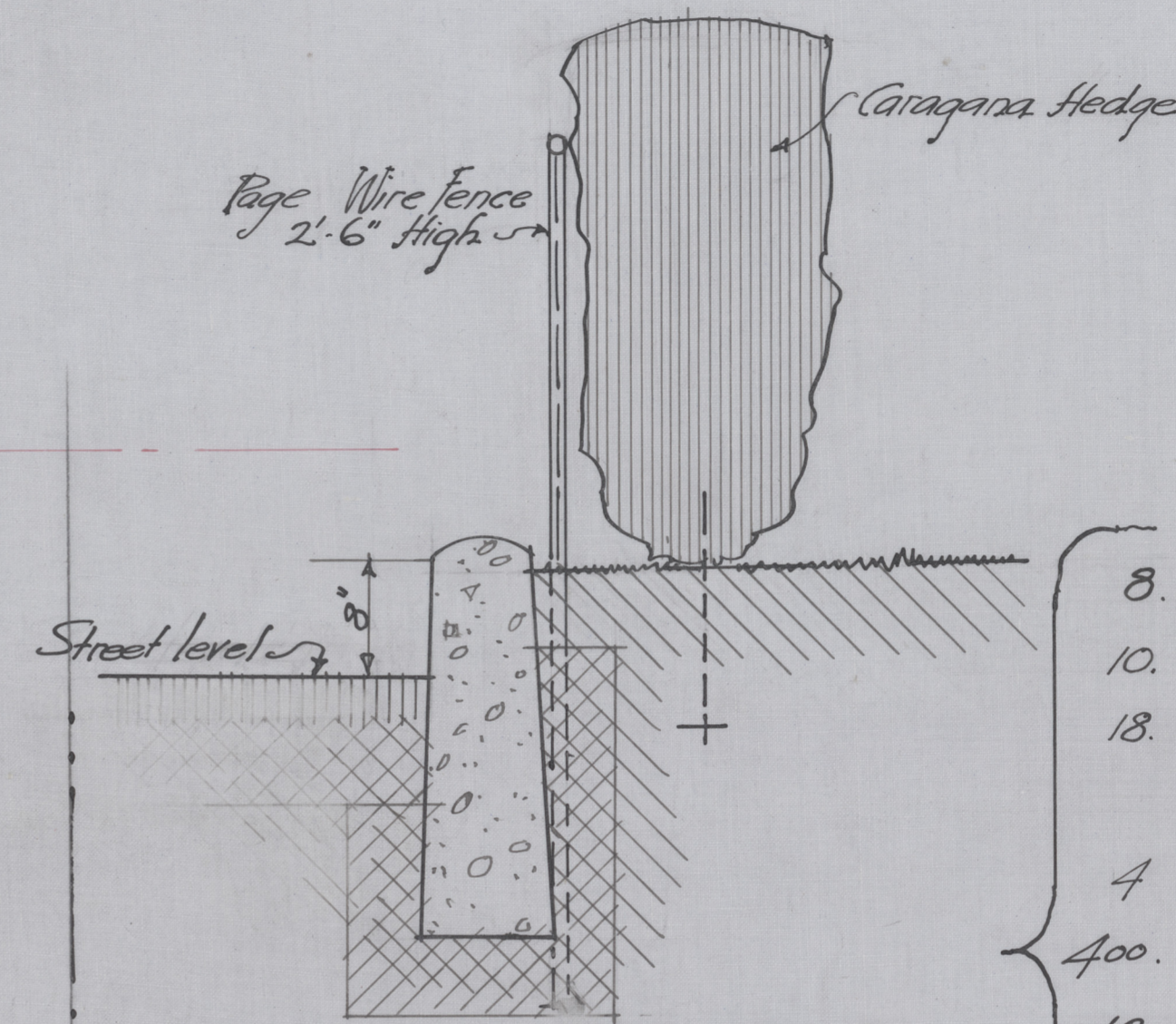
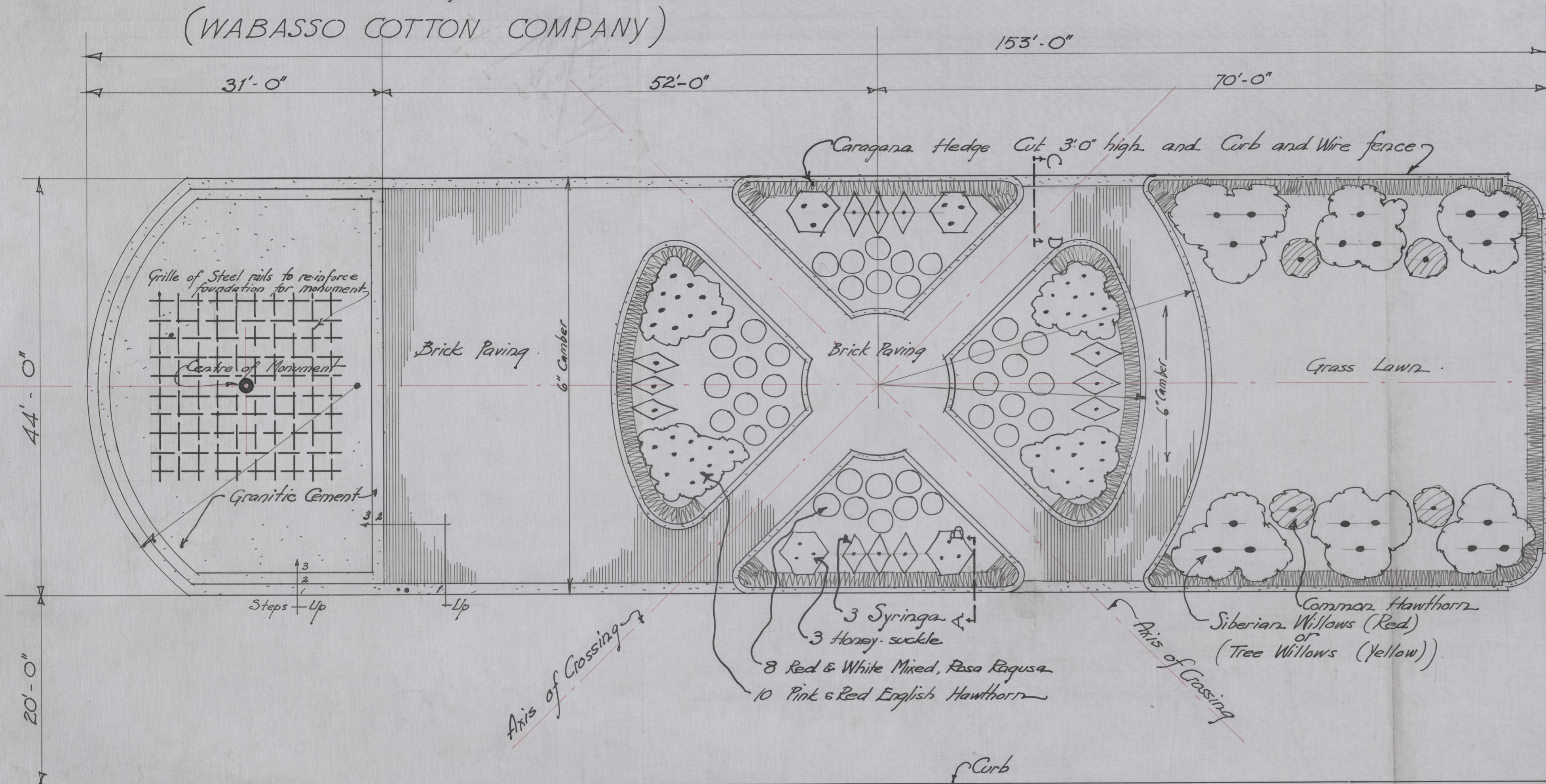
OPERATION NO.	149.
DRAWING NO.	28.
SCALE	30' = 1"
DATE	23/3/20 BY C.M.A.C.

*Nobbs & Hyde Architects
Montreal.*

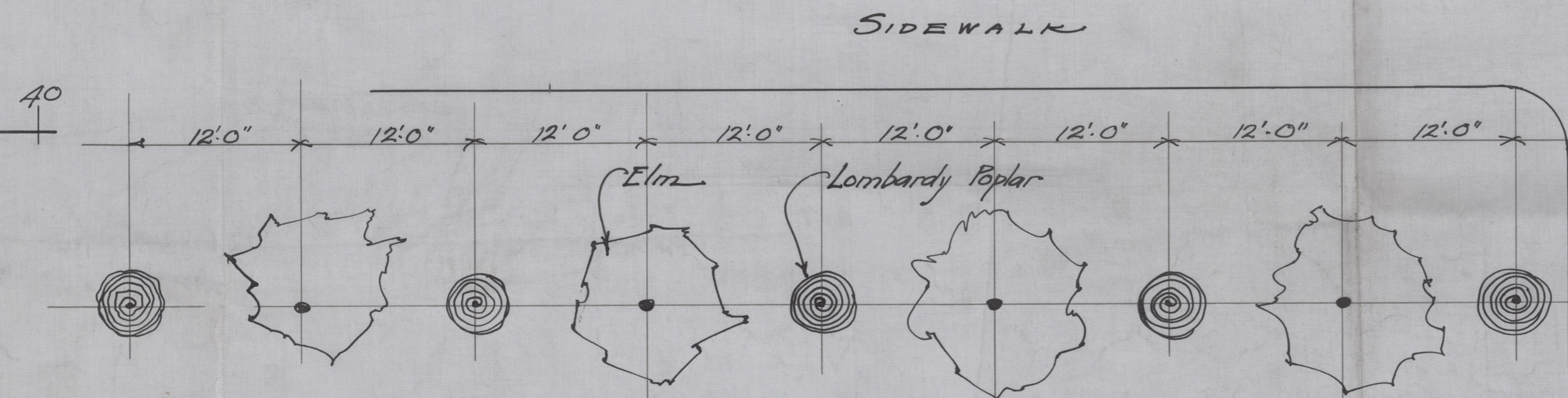
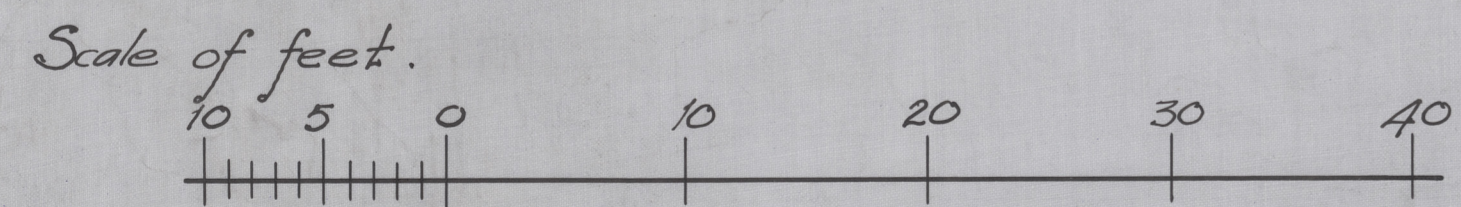
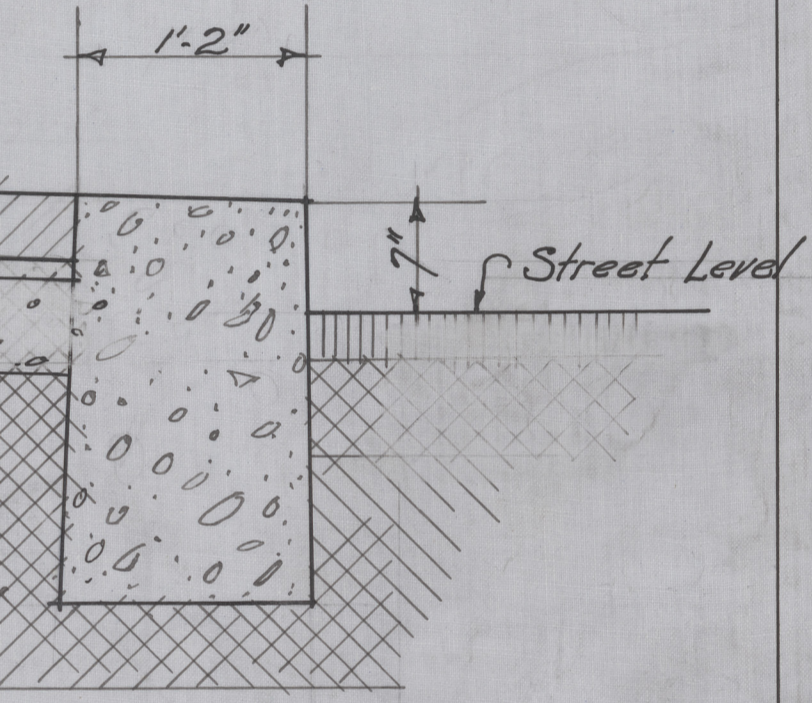
WAR MEMORIAL PARK, THREE RIVERS, P. Q.
(WABASSO COTTON COMPANY)

NOBBS & HYDE ARCHITECTS
74 PHILLIPS ST.
MONTREAL

OP. No. 149 DRAW. No. 29
DATE April 21, 20 By R.W.G.
SCALE $\frac{1}{8}'' = 1'-0''$ & $1'' = 1'-0''$
REVISED 5.5.20
PRINT No. [] DATE []



- 8. Elms
- 10. Lombardy Poplar
- 18. Siberian Willow (Red) or Tree Willow (Yellow)
- 4 Canadian Hawthorn
- 400. Caragana
- 12. Honey-suckle
- 12. Syringa
- 18. Rosa Ragusa (Red)
- 18. Rosa Ragusa (White)
- 20. Pink Hawthorn
- 20. Red Hawthorn



Axis of Entrance to Post Office

