

GEOLOGICAL MAP OF NEWFOUNDLAND

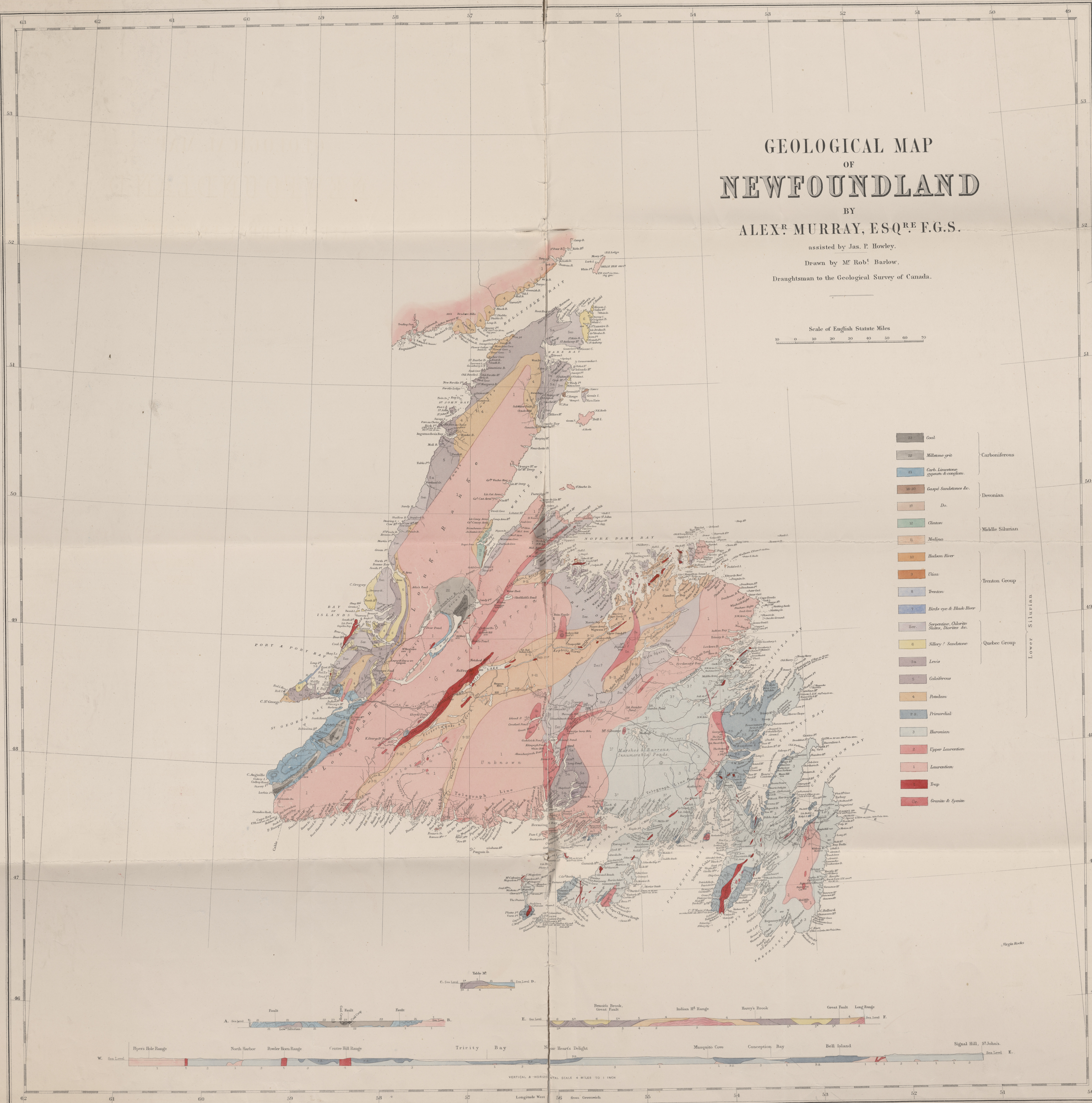
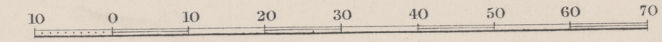
BY
ALEX^r MURRAY, ESQ^r F.G.S.

assisted by Jas. P. Howley.

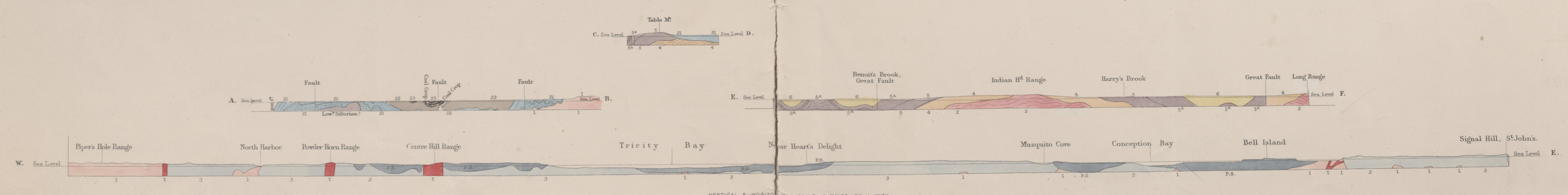
Drawn by M^r Rob^t Barlow.

Draughtsman to the Geological Survey of Canada.

Scale of English Statute Miles



20	Coal		
19	Milstone grit	Carboniferous	
18	Carb. Limestone, gypsum & congl.		
17-16	Carb. Sandstones &c.	Devonian	
17	Do.		
12	Clinton	Middle Silurian	
11	Melina		
10	Bathurst River		
9	Ulster	Trenton Group	
8	Trenton		
7	Barle eye & Black River		
6	Serpentine, Chlorite, Siliceous, etc.	Quebec Group	
5	Siliceous Sandstone		
4	Levis		
3	Galchifrons		
2	Primordial		
1	Barrois		
0	Upper Laurentian		
0	Laurentian		
0	Trop		
0	Granite & Syenite		



VERTICAL & HORIZONTAL SCALE 4 MILES TO 1 INCH

Deposited at Newfoundland, Geological Survey of Canada, 33 George Street, Halifax.