

British Association for the Advancement of Science.

BIRMINGHAM MEETING, SEPTEMBER, 1886.

THE
GEOLOGICAL HISTORY

OF THE
NORTH ATLANTIC.

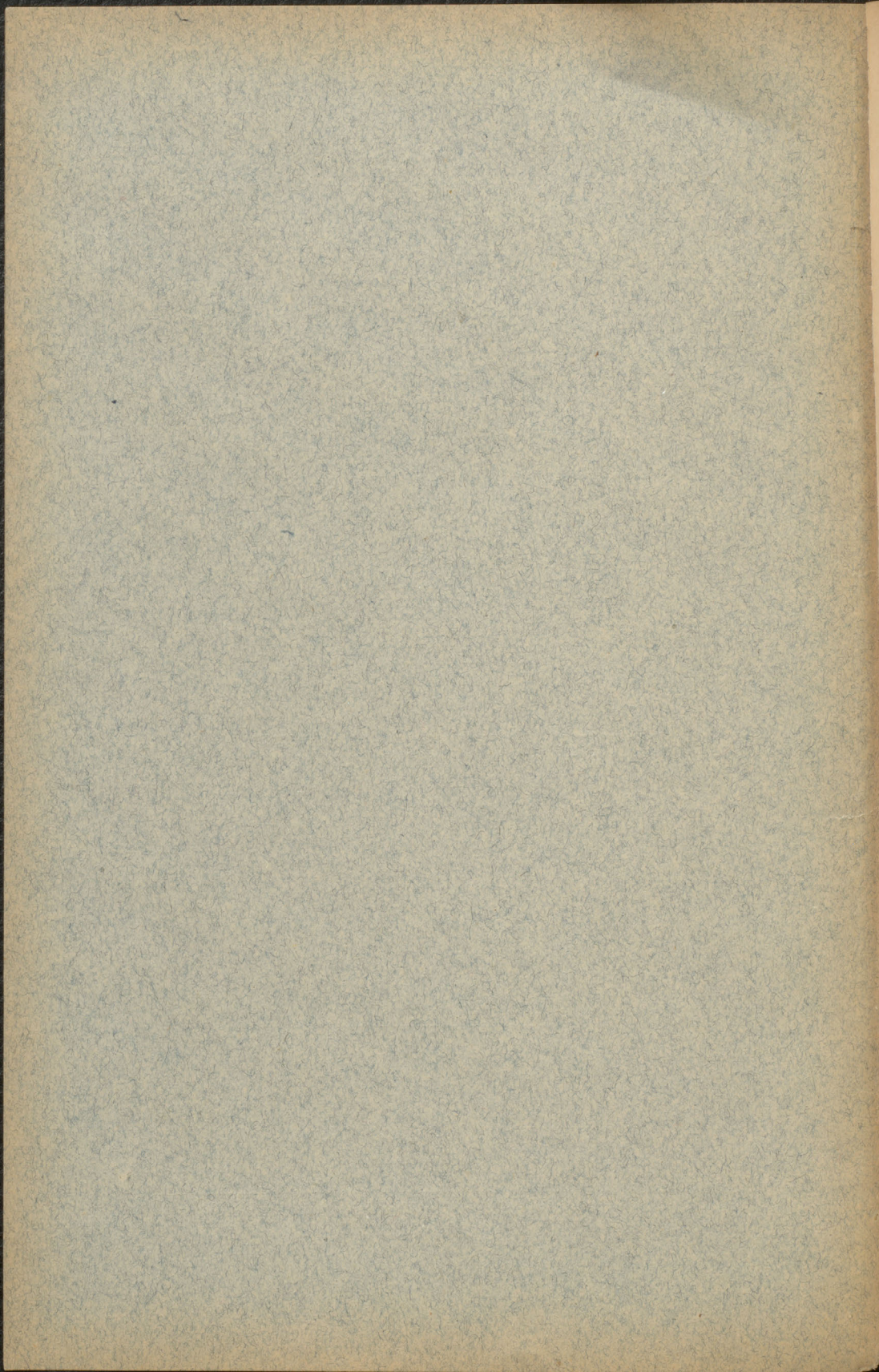
PRESIDENTIAL ADDRESS.

BY

SIR J. WILLIAM DAWSON,

C.M.G., M.A., LL.D., F.R.S., F.G.S., Principal and Vice-Chancellor of McGill
University, Montreal, Canada.

MONTREAL:
PRINTED BY THE GAZETTE PRINTING COMPANY.
1886.



British Association for the Advancement of Science.

BIRMINGHAM MEETING, SEPTEMBER, 1886.

THE

GEOLOGICAL HISTORY

OF THE

NORTH ATLANTIC.

PRESIDENTIAL ADDRESS.

BY

SIR J. WILLIAM DAWSON,

C.M.G., M.A., LL.D., F.R.S., F.G.S., Principal and Vice-Chancellor of McGill
University, Montreal, Canada.

MONTREAL:

PRINTED BY THE GAZETTE PRINTING COMPANY.

1886.

Office of the Secretary for the Department of the Interior
Washington, D. C.

THE

GEOLOGICAL HISTORY

OF THE

STATE OF TEXAS

PRESIDENTIAL ADDRESS

BY

DR. J. W. GARDNER

Geological Survey of Texas, Austin, Texas

1907

THE UNIVERSITY OF TEXAS PRESS

1907

PRESIDENTIAL ADDRESS

BEFORE THE

BRITISH ASSOCIATION FOR THE ADVANCEMENT OF
SCIENCE,

SEPTEMBER, 1886.

BY

SIR J. WILLIAM DAWSON,

C.M.G., M.A., LL.D., F.R.S., F.G.S., Principal and Vice-Chancellor of
McGill University, Montreal, Canada.

TWENTY-ONE years have passed away since the last meeting of the British Association in this great central city of England. At the third Birmingham meeting—that of 1865—I had the pleasure of being present, and had the honour of being one of the Vice-Presidents of the Geological Section. At that meeting, my friend John Phillips, one of the founders of the Association, occupied the Presidential chair, and I cannot better introduce what I have to say this evening than by quoting the eloquent words with which he then opened his address:—‘Assembled for the third time in this busy centre of industrious England, amid the roar of engines and clang of hammers, where the strongest powers of nature are trained to work in the fairy chains of art,

how softly and fittingly falls upon the ear the accent of science, the friend of that art, and the guide of that industry! Here where Priestley analysed the air, and Watt obtained the mastery over steam, it well becomes the students of nature to gather round the standard which they carried so far into the fields of knowledge. And when on other occasions we meet in quiet colleges and academic halls, how gladly welcome is the union of fresh discoveries and new inventions with the solid and venerable truths which are there treasured and taught. Long may such union last; the fair alliance of cultivated thought and practical skill; for by it, labour is dignified and science fertilised, and the condition of human society exalted.' These were the words of a man who, while earnest in the pursuit of science, was full of broad and kindly sympathy for his fellow-men and of hopeful confidence in the future. We have but to turn to the twenty Reports of this Association, issued since 1865, to see the realisation of that union of science and art to which he so confidently looked forward, and to appreciate the stupendous results which it has achieved. In one department alone—that to which my predecessor in this chair so eloquently adverted in Aberdeen, the department of education in science—how much has been accomplished since 1865. Phillips himself lived to see a great revolution in this respect at Oxford. But no one in 1865 could have anticipated that immense development of local schools of science of which your own Mason College and your admirable technical, industrial, and art schools are eminent examples. Based on the general education given by the new system of Board schools, with which the name of the late W. E. Forster will ever be honourably connected, and extending its influence upward to special training, and to the highest university examinations, this new scientific culture is opening paths of honourable ambition to the men and women of England scarcely dreamed of in 1865. I sympathise with the earnest appeal of Sir Lyon Playfair, in his Aberdeen address in favour of scientific education; but visiting England at rare intervals, I am naturally more impressed with the progress that has been made than with the vexatious delays

which have occurred, and I am perhaps better able to appreciate the vast strides that have been taken in the direction of that complete and all-pervading culture in science which he has so ably advocated.

No one could have anticipated twenty years ago that a Birmingham manufacturer, in whose youthful days there were no schools of science for the people, was about to endow a college, not only worthy of this great city, but one of its brightest ornaments.¹ Nor could any-one have foreseen the great development of local scientific societies, like your Midland Institute and Philosophical Society, which are now flourishing in every large town and in many of those of less magnitude. The period of twenty-one years that has elapsed since the last Birmingham meeting has also been an era of public museums and laboratories for the teaching of science, from the magnificent national institutions at South Kensington and those of the great universities and their colleges down to those of the schools and field clubs in country towns. It has, besides, been an era of gigantic progress in original work, and in publication,—a progress so rapid that workers in every branch of study have been reluctantly obliged to narrow more and more their range of reading, and of effort to keep abreast of the advance in their several departments. Lastly, these twenty-one years have been characterised as the ‘coming of age’ of that great system of philosophy with which the names of three Englishmen, Darwin, Spencer, and Wallace, are associated as its founders. Whatever opinions one may entertain as to the sufficiency and finality of that philosophy, there can be no question as to its influence on scientific thought. On the one hand, it is inaccurate to compare it with things so entirely different as the discovery of the chemical elements and of the law of gravitation. On the other, it is scarcely fair to characterise it as a mere ‘confused development’ of the mind of the age. It is indeed a new attempt of science in its maturer years to

¹ It was in 1865 that Sir Josiah Mason was, quietly and without any public note, beginning to lay the foundation of his orphanage at Erdington.

grapple with those mysterious questions of origins which occupied it in the days of its infancy, and it is to be hoped that it may not, like the Titans of ancient fable, be hurled back from heaven, or like the first mother find the knowledge to which it aspires a bitter thing. In any case we should fully understand the responsibility which we incur when in these times of full-grown science we venture to deal with the great problem of origins, and should be prepared to find that in this field, the new philosophy, like those which have preceded it, may meet with very imperfect success. The agitation of these subjects has already brought science into close relations, sometimes friendly, sometimes hostile, it is to be hoped in the end helpful, with those great and awful questions of the ultimate destiny of humanity, and of its relations to its Creator, which must always be nearer to the human heart than any of the achievements of science on its own ground. In entering on such questions, we should proceed with caution and reverence, feeling that we are on holy ground; and that though, like Moses of old, we may be armed with all the learning of our time, we are in the presence of that which, while it burns, is not consumed; a mystery which neither observation, experiment, nor induction can ever fully solve.

In a recent address, the late President of the Royal Society called attention to the fact that within the lifetime of the older men of science of the present day, the greater part of the vast body of knowledge included in the modern sciences of physics, chemistry, biology, and geology, has been accumulated, and the most important advances made in its application to such common and familiar things as the railway, ocean navigation, the electric telegraph, electric lighting, the telephone, the germ theory of disease, the use of anæsthetics, the processes of metallurgy, and the dyeing of fabrics. Even since the last meeting in this city, much of this great work has been done, and has led to general results of the most marvellous kind. What at that time could have appeared more chimerical than the opening up, by the enterprise of one British colony, of a shorter road to the east by way of the extreme west, realizing what was happily called by Milton and Chedle 'the new North-west Passage,' mak-

ing Japan the next neighbour of Canada on the west, and offering to Britain a new way to her Eastern possessions; or than the possibility of this Association holding a successful meeting on the other side of the Atlantic? To have ventured to predict such things in 1865, would have appeared quite visionary, yet you are now invited to meet in Australia, and may proceed thither by the Canadian Pacific Railway and its new lines of steamers, returning by the Suez Canal.¹ To-day this is quite as feasible as the Canadian visit would have been in 1865. It is science which has thus brought the once widely separated parts of the world nearer to each other, and which is breaking down those geographical barriers which have separated the different portions of our widely extended British race. Its work in this is not yet complete. Its goal to-day is its starting-point to-morrow. It is as far as at any previous time from seeing the limit of its conquests; and every victory gained is but the opening of the way for a farther advance.

By its visit to Canada, the British Association has asserted its imperial character, and has consolidated the scientific interests of Her Majesty's dominions, in advance of that great gathering of the industrial products of all parts of the empire now on exhibition in London, and in advance of any political plans of imperial federation. There has even been a project before us for an international scientific convention, in which the great English republic of America shall take part, a project, the realisation of which was to some extent anticipated in the fusion of the members of the British and American Associations at Montreal and Philadelphia in 1884. As a Canadian, as a past President of the American Association, and now honoured with the Presidency of this Association, I may be held to represent in my own person the scientific union of the British Islands, of the various Colonies and of the great Republic, which, whatever the difficulties attending its formal accomplishment at present,

¹ It is expected that, on the completion of the connections of the Canadian Pacific Railway, the time from ocean to ocean may be reduced to 116 hours, and from London to Hong Kong to twenty-seven days.

is certain to lead to an actual and real co-operation in scientific work. In furtherance of this, I am glad to see here to-day influential representatives of most of the British Colonies, of India, and of the United States. We welcome here, also, delegates from other countries; and though the barrier of language may at present prevent a larger union, we may entertain the hope that Britain, America, India, and the Colonies, working together in the interest of science, may ultimately render our English tongue the most general vehicle of scientific thought and discovery, a consummation of which I think there are, at present, many indications.

But, while science marches on from victory to victory, its path is marked by the resting-places of those who have fought its battles and assured its advance. In looking back to 1865, there rise before me the once familiar countenances of Phillips, Murchison, Lyell, Forbes, Jeffreys, Jukes, Rolleston, Miller, Spottiswoode, Fairbairn, Gassiot, Carpenter, and a host of others, present in full vigor at that meeting, but no more with us. These were veterans of science; but, alas! many then young and rising in fame are also numbered with the dead. It may be that before another Birmingham meeting, many of us, the older members now, will have passed away. But these men have left behind them ineffaceable monuments of their work, in which they still survive, and we rejoice to believe that, though dead to us, they live in the company of the great and good of all ages who have entered into the unseen universe where all that is high and holy and beautiful, must go on accumulating till the time of the restitution of all things. Let us follow their example and carry on their work, as God may give us power and opportunity, gathering precious stores of knowledge and of thought, in the belief that all truth is immortal, and must go on for ever bestowing blessings on mankind. Thus will the memory of the mighty dead remain to us as a power which—

“Like a star

Beacons from the abode where the eternal are.”

I do not wish, however, to occupy your time longer with general or personal matters, but rather to take the oppor-

tunity afforded by this address to invite your attention to some topics of scientific interest. In attempting to do this, I must have before me the warning conveyed by Professor Huxley, in the address to which I have already referred, that in our time, science, like Tarpeia, may be crushed with the weight of the rewards bestowed on her. In other words, it is impossible for any man to keep pace with the progress of more than one limited branch of science; and it is equally impossible to find an audience of scientific men of whom anything more than a mere fraction can be expected to take an interest in any one subject. There is, however, some consolation in the knowledge that a speaker who is sufficiently simple for those who are advanced specialists in other departments, will of necessity be also sufficiently simple to be understood by the general public who are specialists in nothing. On this principle, a geologist of the old school, accustomed to a great variety of work, may hope so to scatter his fire as to reach the greater part of the audience. In endeavouring to secure this end, I have sought inspiration from that ocean which connects rather than separates Britain and America, and may almost be said to be an English sea—the North Atlantic. The geological history of this depression of the earth's crust, and its relation to the continental masses which limit it, may furnish a theme at once generally intelligible and connected with great questions as to the structure and history of the earth, which have excited the attention alike of the physicists, geologists, biologists, geographers and ethnologists. Should I, in treating of these questions, appear to be somewhat abrupt and dogmatic, and to indicate rather than state the evidence of the general views announced, I trust you will kindly attribute this to the exigencies of a short address.

If we imagine an observer contemplating the earth from a convenient distance in space, and scrutinizing its features as it rolls before him, we may suppose him to be struck with the fact that eleven-sixteenths of its surface are covered with water, and that the land is so unequally distributed that from one point of view he would see a hemisphere almost exclusively oceanic, while nearly the whole of the dry land is

gathered in the opposite hemisphere. He might observe that the great oceanic area of the Pacific and Antarctic Oceans is dotted with islands—like a shallow pool with stones rising above its surface—as if its general depth were small in comparison with its area. He might also notice that a mass or belt of land surrounds each pole, and that the northern ring sends off to the southward three vast tongues of land and of mountain chains, terminating respectively in South America, South Africa, and Australia, towards which feebler and insular processes are given off by the Antarctic continental mass. This, as some geographers have observed,¹ gives a rudely three-ribbed aspect to the earth, though two of the ribs are crowded together and form the Europ-asian mass or double continent, while the third is isolated in the single continent of America. He might also observe that the northern girdle is cut across, so that the Atlantic opens by a wide space into the Arctic Sea, while the Pacific is contracted toward the north, but confluent with the Antarctic Ocean. The Atlantic is also relatively deeper and less cumbered with islands than the Pacific, which has the higher ridges near its shores, constituting what some visitors to the Pacific coast of America have not inaptly called the ‘back of the world,’ while the wider slopes face the narrower ocean, into which, for this reason, the greater part of the drainage of the land is poured.² The Pacific and Atlantic, though both depressions or flattenings of the earth, are, as we shall find, different in age, character, and conditions; and the Atlantic, though the smaller, is the older, and, from the geological point of view, in some respects, the more important of the two.

If our imaginary observer had the means of knowing anything of the rock formations of the continents, he would notice that those bounding the North Atlantic are, in general, of great age—some belonging to the Laurentian system.

¹ Dana, *Manual of Geology*, introductory part. Green, *Vestiges of a Molten Globe*, has summed up these facts.

² Mr. Mellard Reade, in two Presidential addresses before the Geological Society of Liverpool, has illustrated this point and its geological consequences.

On the other hand, he would see that many of the mountain ranges along the Pacific are comparatively new, and that modern igneous action occurs in connection with them. Thus he might be led to believe that the Atlantic, though comparatively narrow, is an older feature of the earth's surface; while the Pacific belongs to more modern times. But he would note, in connection with this, that the oldest rocks of the great continental masses are mostly toward their northern ends; and that the borders of the northern ring of land, and certain ridges extending southward from it, constitute the most ancient and permanent elevations of the earth's crust, though now greatly surpassed by mountains of more recent age nearer the equator.

Before leaving this general survey we may make one further remark. An observer, looking at the earth from without, would notice that the margins of the Atlantic and the main lines of direction of its mountain chains are north-east and south-west, and north-west and south-east, as if some early causes had determined the occurrence of elevations along great circles of the earth's surface tangent to the polar circles.

We are invited by the preceding general glance at the surface of the earth to ask certain questions respecting the Atlantic. (1) What has at first determined its position and form? (2) What changes has it experienced in the lapse of geological time? (3) What relations have these changes borne to the development of life on the land and in the water? (4) What is its probable future?

Before attempting to answer these questions, which I shall not take up formally in succession, but rather in connection with each other, it is necessary to state, as briefly as possible, certain general conclusions respecting the interior of the earth. It is popularly supposed that we know nothing of this beyond a superficial crust perhaps averaging 50,000 to 100,000 feet in thickness. It is true we have no means of exploration in the earth's interior, but the conjoined labours of physicists and geologists have now proceeded sufficiently far to throw much inferential light on the subject, and to enable us to make some general affirma-

tions with certainty; and these it is the more necessary to state distinctly, since they are often treated as mere subjects of speculation and fruitless discussion.

(1) Since the dawn of geological science, it has been evident that the crust on which we live must be supported on a plastic or partially liquid mass of heated rock, approximately uniform in quality under the whole of its area. This is a legitimate conclusion from the wide distribution of volcanic phenomena, and from the fact that the ejections of volcanoes, while locally of various kinds, are similar in every part of the world. It led to the old idea of a fluid interior of the earth, but this is now generally abandoned, and this interior heated and plastic layer is regarded as merely an under-crust.

(2) We have reason to believe, as the result of astronomical investigations,¹ that, notwithstanding the plasticity or liquidity of the under-crust, the mass of the earth—its nucleus as we may call it—is practically solid and of great density and hardness. Thus we have the apparent paradox of a solid yet fluid earth; solid in its astronomical relations, liquid or plastic for the purposes of volcanic action and superficial movements.²

(3) The plastic sub-crust is not in a state of dry igneous fusion, but in that condition of aqueo-igneous or hydrothermic fusion which arises from the action of heat on moist substances, and which may either be regarded as a fusion or as a species of solution at a very high temperature. This we learn from the phenomena of volcanic action, and from

¹ Hopkins, Mallet, Sir William Thomson, and Prof. G. H. Darwin maintain the solidity and rigidity of the earth on astronomical grounds; but different conclusions have been reached by Hennesey, Delaunay, and Airy. In America, Barnard and Crosby, Dutton, Le Conte, and Wadsworth have discussed these questions.

² An objection has been taken to the effect that the supposed ellipsoidal form of the equator is inconsistent with a plastic sub-crust. But this ellipsoidal form is not absolutely certain, or, if it exists, is very minute. Bonney has, in a recent lecture, suggested the important consideration that a mass may be slowly mobile under long-continued pressure, while yet rigid with reference to more sudden movements.

the composition of the volcanic and plutonic rocks, as well as from such chemical experiments as those of Daubr e and of Tilden and Shenstone.¹

(4) The interior sub-crust is not perfectly homogeneous, but may be roughly divided into two layers or magmas, as they have been called: an upper, highly siliceous or acidic, of low specific gravity and light-coloured, and corresponding to such kinds of plutonic and volcanic rocks as granite and trachyte; and a lower, less siliceous or more basic, more dense, and more highly charged with iron, and corresponding to such igneous rocks as the dolerites, basalts, and kindred lavas. It is interesting here to note that this conclusion, elaborated by Durocher and von Waltershausen, and usually connected with their names, appears to have been first announced by John Phillips, in his 'Geological Manual,' and as a mere common sense deduction from the observed phenomena of volcanic action and the probable results of the gradual cooling of the earth.² It receives striking confirmation from the observed succession of acidic and basic volcanic rocks of all geological periods and in all localities. It would even seem, from recent spectroscopic investigations of Lockyer, that there is evidence of a similar succession of magmas in the heavenly bodies, and the discovery by Nordenski ld of native iron in Greenland basalts, affords a probability that the inner magma is in part metallic.³

(5) Where rents or fissures form in the upper crust, the material of the lower crust is forced upward by the pressure of the less supported portions of the former, giving rise to

¹ *Phil. Trans.* 1884. Also Crosby in *Proc. Boston Soc. Nat. Hist.* 1883.

² Phillips, *Manual of Geology*, 1855, p. 493. Dr. Sterry Hunt has kindly directed my attention to the fact of Phillip's right of priority in this matter. Durocher in 1857 elaborated the theory of magmas in the *Annales des Mines*, and we are indebted to Dutton, of the United States Geological Survey, for its detailed application to the remarkable volcanic outflows of Western America.

³ These basalts occur at Ovifak, Greenland. Andrews has found small particles of iron in British basalts. Prestwich and Judd have referred to the bearing on general geology of these facts, and of Lockyer's suggestions.

volcanic phenomena either of an explosive or quiet character, as may be determined by contact with water. The underlying material may also be carried to the surface by the agency of heated water, producing those quiet discharges which Hunt has named crenitic. It is to be observed here that explosive volcanic phenomena, and the formation of cones, are, as Prestwich has well remarked, characteristic of an old and thickened crust; quiet ejection from fissures and hydro-thermal action may have been more common in earlier periods and with a thinner over-crust.

(6) The contraction of the earth's interior by cooling and by the emission of material from below the over-crust, has caused this crust to press downward, and therefore laterally, and so to effect great bends, folds, and plications; and these, modified subsequently by surface denudation, constitute mountain chains and continental plateaus. As Hall long ago pointed out,¹ such lines of folding have been produced more especially where thick sediments had been laid down on the sea bottom. Thus we have here another apparent paradox, namely, that the elevations of the earth's crust occur in the places where the greatest burden of detritus has been laid down upon it, and where consequently the crust has been softened and depressed. We must beware, in this connection, of exaggerated notions of the extent of contraction and of crumpling required to form mountains. Bonney has well shown, in lectures delivered at the London Institution, that an amount of contraction, almost inappreciable in comparison with the diameter of the earth, would be sufficient; and that as the greatest mountain chains are less than $\frac{1}{600}$ th of the earth's radius in height, they would, on an artificial globe a foot in diameter, be no more important than the slight inequalities that might result from the paper gores overlapping each other at the edges.

(7) The crushing and sliding of the over-crust implied in these movements raise some serious questions of a physical

¹ Hall, (American Association Address, 1857, subsequently republished, with additions, as *Contributions to the Geological History of the American Continent*,) Mallet, Rogers, Dana, Le Conte, &c,

character. One of these relates to the rapidity or slowness of such movements, and the consequent degree of intensity of the heat developed, as a possible cause of metamorphism of rocks. Another has reference to the possibility of changes in the equilibrium of the earth itself as resulting from local collapse and ridging. These questions in connection with the present dissociation of the axis of rotation from the magnetic poles, and with changes of climate, have attracted some attention,¹ and probably deserve further consideration on the part of physicists. In so far as geological evidence is concerned, it would seem that the general association of crumpling with metamorphism indicates a certain rapidity in the process of mountain-making, and consequent development of heat; and the arrangement of the older rocks around the Arctic basin forbids us from assuming any extensive movement of the axis of rotation, though it does not exclude changes to a limited extent. I hope that Professor Darwin will discuss these points in his address to the Physical Section.

I wish to formulate these principles as distinctly as possible, and as the result of all the long series of observations, calculations, and discussions since the time of Werner and Hutton, and in which a vast number of able physicists and naturalists have borne a part, because they may be considered as certain deductions from our actual knowledge, and because they lie at the foundation of a rational physical geology.

We may popularise these deductions by comparing the earth to a drupe or stone-fruit, such as a plum or peach, somewhat dried up. It has a large and intensely hard stone and kernel, a thin pulp made up of two layers, an inner more dense and dark-coloured, and an outer less dense and lighter-coloured. These constitute the under-crust. On the outside it has a thin membrane or over-crust. In the process of drying it has slightly shrunk, so as to produce ridges and hollows of the outer crust, and this outer crust has

¹ See recent papers of Oldham and Fisher, in *Geological Magazine* and *Philosophical Magazine*, July 1886. Also Péroche, *Revol. Politiques*. Paris, 1886.

cracked in some places, allowing portions of the pulp to ooze out—in some of these its lower dark substance, in others its upper and lighter material. The analogy extends no farther, for there is nothing in our withered fruit to represent the oceans occupying the lower parts of the surface or the deposits which they have laid down.

Keeping in view these general conclusions, let us now turn to their bearing on the origin and history of the North Atlantic.

Though the Atlantic is a deep ocean, its basin does not constitute so much a depression of the crust of the earth as a flattening of it, and this, as recent soundings have shown, with a slight ridge or elevation along its middle, and banks or terraces fringing the edges, so that its form is not so much that of a basin as that of a shallow plate with its middle a little raised. Its true permanent margins are composed of portions of the over-crust folded, ridged up and crushed, as if by lateral pressure emanating from the sea itself. We cannot, for example, look at a geological map of America without perceiving that the Appalachian ridges, which intervene between the Atlantic and the St. Lawrence valley, have been driven bodily back by a force acting from the east, and that they have resisted this pressure only where, as in the Gulf of St. Lawrence and the Catskill region of New York, they have been protected by outlying masses of very old rocks, as, for example, by that of the island of Newfoundland and that of the Adirondack Mountains. The admirable work begun by my friend and fellow-student Professor James Nicol, followed up by Hicks, Lapworth, and others, and now, after long controversy, fully confirmed by the recent observations of the geological survey of Scotland, has shown the most intense action of the same kind on the east side of the ocean in the Scottish highlands; and the more widely distributed Eozoic rocks of Scandinavia may be appealed to in further evidence of this.¹

¹ Address to the Geological Section, by Prof. Judd, Aberdeen Meeting, 1885. According to Rogers, the crumpling of the Appalachians has reduced a breadth of 158 miles to about 60.

If we now inquire as to the cause of the Atlantic depression, we must go back to the time when the areas occupied by the Atlantic and its bounding coasts were parts of the shoreless sea in which the earliest gneisses or stratified granites of the Laurentian age were being laid down in vastly extended beds. These ancient crystalline rocks have been the subject of much discussion and controversy, and as they constitute the lowest and probably the firmest part of the Atlantic sea-bed, it is necessary to inquire as to their origin and history. Dr. Bonney, the late President of the Geological Society, in his Anniversary address, and Dr. Sterry Hunt, in an elaborate paper communicated to the Royal Society of Canada, have ably summed up the hypotheses as to the origin of the oldest Laurentian beds. At the basis of these hypotheses lies the admission that the immensely thick beds of orthoclase gneiss, which are the oldest stratified rocks known to us, are substantially the same in composition with the upper or silicious magma or layer of the under-crust. They are, in short, its materials either in their primitive condition or merely re-arranged. One theory considers them as original products of cooling, owing their lamination merely to the successive stages of the process. Another view refers them to the waste and re-arrangement of the materials of a previously massive granite. Still another holds that all our granites really arise from the fusion of old gneisses of originally aqueous origin, while a fourth refers the gneisses themselves to molecular changes effected in granite by pressure. These several views, in so far as they relate to the oldest or fundamental Laurentian gneiss, may be arranged under the following heads: (1) *Endoplutonic*, or that which regards all the old gneisses as molten rocks cooled from without inward, in successive layers.¹ (2) *Exoplutonic*, or that which considers them as made up of matter ejected from below the upper crust in the manner of volcanic action². (3) *Metamorphic*, which supposes the old gneisses to arise from the crystallisation of detrital matter spread over the sea-bottom, and either igneous or derived from the decay of

¹ Naumann, Phillips, Durocher, Macfarlane, &c.

² Clarence King, Tornebohm, Marr. &c.

igneous rocks.¹ (4) *Chaotic* or *Thermo-chaotic*, or the theory of deposit from the turbid waters of a primeval ocean either with or without the aid of heat. In one form this was the old theory of Werner.² (5) *Crenitic* or Hydro-thermic, which supposes the action of heated waters, penetrating below the crust, to be constantly bringing up to the surface mineral matters in solution and depositing these so as to form felspathic and other rocks.³

It will be observed, in regard to these theories, that they do not suppose that the old gneiss is an ordinary sediment, but that all regard it as formed in exceptional circumstances, these circumstances being the absence of land and of sub-aërial decay of rock, and the presence wholly or principally of the material of the upper surface of the recently hardened crust. This being granted, the question arises, ought we not to combine these several theories and to believe that the cooling crust has hardened in successive layers from without inward; that at the same time fissures were locally discharging igneous matter to the surface; that matter held in suspension in the ocean and matter held in solution by heated waters rising from beneath the outer crust were mingling their materials in the deposits of the primitive ocean? It would seem that the combination of all these agencies may safely be evoked as causes of the pre-Atlantic deposits. This is the eclectic position which I endeavoured to maintain in my address before the Minneapolis Meeting of the American Association in 1883, and which I still hold to be in every way probable.

A word here as to metamorphism, a theory which, like many others, has been first run to death and then discredited, but which, owing to the moderate degree in which it was originally held by Lyell, is still valid. Nothing can be more certain than that the composition of the Laurentian gneisses forbids us to suppose that they can be ordinary sediments metamorphosed. They are rocks peculiar in their origin, and not paralleled, unless exceptionally, in

¹ Lyell, Kopp, Reusch, Judd, &c.

² Scrope, De LaBeche, Daubrée.

³ Hunt, Transactions Royal Society of Canada, 1885.

later times. On the other hand, they have undoubtedly experienced very important changes, more especially as to crystallization, the state of combination of their ingredients, and the development of disseminated minerals;¹ and while this may in part be attributed to the mechanical pressure to which they have been subjected, it requires also the action of hydrothermic agencies. Any theory which fails to invoke both of these kinds of force must necessarily be partial and imperfect.

But all metamorphic rocks are not of the same character with the gneisses of the Lower Laurentian. Even in the Middle and Upper Laurentian, we have metamorphic rocks, *e. g.* quartzite and limestone, which must originally have been ordinary aqueous deposits. Still more, in the succeeding Huronian and its associated series of beds, and in the Lower Palæozoic, local metamorphic change has been undergone by rocks quite similar to those which in their unaltered state constitute regular sedimentary deposits. In the case of these later rocks it is to be borne in mind that, while some may have been of volcanic origin, others may have been sediments rich in undecomposed fragments of silicates. It is a mistake to suppose that the ordinary decay of stratified siliceous rocks is a process of kaolinization so perfect as to eliminate all alkaline matters. On the contrary, the fact, which Judd has recently well illustrated in the case of the mud of the Nile, applies to a great number of similar deposits in all parts of the world, and shows that the finest sediments have not always been so completely lixiviated as to be destitute of the basic matters necessary for their conversion into gneiss, mica-schist, and similar rocks, when the necessary agencies of metamorphism are applied to them, and this quite independently of any other extraneous matters introduced into them by water or otherwise. Still it must

¹ The first of these is what Bonney has called *Metastasis*. The second and third come under the name *Metacrisis*. *Methylosis*, or change of substance, is altogether exceptional, and not to be credited, except on the best evidence, or in cases where volatile matters have been expelled, as in the change of hæmatite into magnetite, or of bituminous coal into anthracite.

be steadily kept in view that many of the old pre-Cambrian crystalline rocks must have been different originally from those succeeding them, and that, consequently, these last, even when metamorphosed, present different characters.

I may remark here that, though a palæontologist rather than a lithologist, it gives me great pleasure to find so much attention now given in this country to the old crystalline rocks, and to their study microscopically and chemically as well as in the field, a work in which Sorby and Allport were pioneers. As a pupil of the late Professor Jameson of Edinburgh, my own attention was early attracted to the study of minerals and rocks as the stable foundations of geological science; and so far back as 1841 I had learnt of the late Mr. Sanderson, of Edinburgh, who worked at Nicol's sections,¹ how to slice rocks and fossils; and since that time I have been in the habit of examining everything with the microscope. The modern developments in this direction are therefore very gratifying to me, even though, as is natural, they sometimes appear to be pushed too far or their value over-estimated.

That the older gneisses were deposited, not only in what is now the bed of the Atlantic, but also on the great continental areas of America and Europe, anyone who considers the wide extent of these rocks represented on the map recently published by Professor Hull can readily understand.² It is true that Hull supposes that the basin of the Atlantic itself may have been land at this time, but there is no necessity for holding this view, more especially as the material of the gneiss could not have been detritus derived from sub-aërial decay of rock.

Let us suppose, then, the floor of old ocean covered with a flat pavement of gneiss, or of that material which is now gneiss, the next question is how and when did this original bed become converted into sea and land. Here we have some things certain, others most debateable. That the cooling mass, especially if it was sending out volumes of softened rocky material, either in the exoplutonic or in the crentic

¹ *Trans. Royal Irish Academy.* ² And I believe at Witham's also.

way, and piling this on the surface, must soon become too small for its shell, is apparent; but when and where would the collapse, crushing, and wrinkling inevitable from this cause begin? When they began is indicated by the lines of mountain-chains which traverse the Laurentian districts; but the reason why is less apparent. The more or less unequal cooling, hardening and conductive power of the outer crust we may readily assume. The driftage unequally of water-borne detritus to the south-west by the bottom currents of the sea is another cause, and, as we shall soon see, most effective. Still another is the greater cooling and hardening of the crust in the polar regions, and the tendency to collapse of the equatorial protuberance from the slackening of the earth's rotation. Besides these, the internal tides of the earth's substance at the times of solstice would exert an oblique pulling force on the crust, which might tend to crack it along diagonal lines. From whichever of these causes or the combination of the whole, we know that, within the Laurentian time, folded portions of the earth's crust began to rise above the general surface, in broad belts running from N.E. to S.W., and from N.W. to S.E., where the older mountains of Eastern America and Western Europe now stand, and that the subsidence of the oceanic areas, allowed by this crumpling of the crust, permitted other areas on both sides of the Atlantic to form limited table-lands.¹ This was the commencement of a process repeated again and again in subsequent times, and which began in the middle Laurentian, when for the first time we find beds of quartzite, limestone, and iron ore, and graphitic beds, indicating that there was already land and water, and that the sea, and perhaps the land, swarmed with forms of animal and plant life, unknown, for the most part, now. Independently of the questions as to the animal nature of Eozoon, I hold that we know, as certainly as we can know anything

¹ Daubr e's curious experiments on the contraction of caoutchouc balloons, partially hardened by coating with varnish, show how small inequalities of the crust, from whatever cause arising, might effect the formation of wrinkles, and also that transverse as well as longitudinal wrinkling might occur.

inferentially, the existence of these primitive forms of life. If I were to conjecture what were the early forms of plant and animal life, I would suppose that, just as in the Palæozoic, the acrogens culminated in gigantic and complex forest trees, so in the Laurentian, the algæ, the lichens, and the mosses grew to dimensions and assumed complexity of structure unexampled in later times, and that, in the sea, the humbler forms of Protozoa and Hydrozoa were the dominant types, but in gigantic and complex forms. The land of this period was probably limited, for the most part, to high latitudes, and its aspect, though more rugged and abrupt, and of greater elevation, must have been of that character which we still see in the Laurentian hills. The distribution of this ancient land is indicated by the long lines of old Laurentian rock extending from the Labrador coast and the north shore of the St. Lawrence, and along the eastern slopes of the Appalachians in America, and the like rocks of the Hebrides, the Western Highlands, and the Scandinavian mountains. A small but interesting remnant is that in the Malvern Hills, so well described by Holl. It will be well to note here and to fix on our minds, that these ancient ridges of Eastern America and Western Europe have been greatly denuded and wasted since Laurentian times, and that it is along their eastern sides that the greatest sedimentary accumulations have been deposited.

From this time dates the introduction of that dominance of existing causes which forms the basis of uniformitarianism in geology, and which had to go on with various and great modifications of detail, through the successive stages of the geological history, till the land and water of the northern hemisphere attained to their present complex structure.

So soon as we have a circumpolar belt or patches of Eozoic¹ land and ridges running southward from it, we enter on new and more complicated methods of growth of the continents and seas. Portions of the oldest crystalline rocks, raised out of the protecting water, were now eroded by atmospheric agents, and especially by the car-

¹ Or Archæan, or pre-Cambrian, if these terms are preferred.

bonic acid, then existing in the atmosphere perhaps more abundantly than at present, under whose influence the hardest of the gneissic rocks gradually decay. The Arctic lands were subjected in addition to the powerful mechanical force of frost and thaw. Thus every shower of rain and every swollen stream would carry into the sea the products of the waste of land, sorting them into fine clays and coarser sands ; and the cold currents which cling to the ocean bottom, now determined in their courses, not merely by the earth's rotation, but also by the lines of folding on both sides of the Atlantic, would carry south-westward, and pile up in marginal banks of great thickness, the *débris* produced from the rapid waste of the land already existing in the Arctic regions. The Atlantic, opening widely to the north, and having large rivers pouring into it, was, especially, the ocean characterised, as time advanced, by the prevalence of these phenomena. Thus throughout the geological history it has happened that, while the middle of the Atlantic has received merely organic deposits of shells of Foraminifera and similar organisms, and this probably only to a small amount, its margins have had piled upon them beds of detritus of immense thickness. Professor Hall, of Albany, was the first geologist who pointed out the vast cosmic importance of these deposits, and that the mountains of both sides of the Atlantic owe their origin to these great lines of deposition, along with the fact, afterwards more fully insisted on by Rogers, that the portions of the crust which received these masses of *débris* became thereby weighted down and softened, and were more liable than other parts to lateral crushing.¹

¹ The connection of accumulation with subsidence was always a familiar consideration with geologists ; but Hall seems to have been the first to state its true significance as a geological factor, and to see that those portions of the crust, which are weighted down by great detrital accumulations, are necessarily those which, in succeeding movements, were elevated into mountains. Other American geologists, as Dana, Rogers, Hunt, Le Conte, Crosby, &c., have followed up Hall's primary suggestion, and in England, Hicks, Fisher, Starkie Gardiner, Hull, and others, have brought it under notice, and it enters into the great generalisations of Lyell on these subjects.

Thus in the later Eozoic and early Palæozoic times, which succeeded the first foldings of the oldest Laurentian, great ridges were thrown up, along the edges of which were beds of limestone, and on their summits and sides, thick masses of ejected igneous rocks. In the bed of the central Atlantic, there are no such accumulations. It must have been a flat, or slightly ridged, plate of the ancient gneiss, hard and resisting, though perhaps with a few cracks, through which igneous matter welled up, as in Iceland and the Azores in more modern times. In this condition of things we have causes tending to perpetuate and extend the distinctions of ocean and continent, mountain and plain, already begun; and of these we may more especially note the continued subsidence of the areas of greatest marine deposition. This has long attracted attention, and affords very convincing evidence of the connection of sedimentary deposit as a cause with the subsidence of the crust.¹

We are indebted to a French physicist, M. Faye,² for an important suggestion on this subject. It is that the sediment accumulated along the shores of the ocean presented an obstacle to radiation, and consequently to cooling of the crust, while the ocean floor, unprotected and unweighted, and constantly bathed with currents of cold water having great power of convection of heat, would be more rapidly cooled, and so would become thicker and stronger. This suggestion is complementary to the theory of Professor Hall, that the areas of greatest deposit on the margins of

¹ Dutton in *Report of U.S. Geological Survey*, 1881. From facts stated in this report and in my *Acadian Geology*, it is apparent that in the Western States and in the coalfields of Nova Scotia, shallow-water deposits have been laid down, up to thicknesses of 10,000 to 20,000 feet in connection with continuous subsidence. See also a paper by Ricketts in the *Geol. Mag.* 1883. It may be well to add here that this doctrine of the subsidence of wide areas being caused by deposition, does not justify the conclusion of certain glacialists that snow and ice have exercised a like power in glacial periods. In truth, as will appear in the sequel, great accumulations of snow and ice require to be preceded by subsidence, and wide continental areas can never be covered with deep snow, while, of course, ice can cause no addition of weight to submerged areas.

² *Revue Scientifique*, 1886.

the ocean are necessarily those of greatest folding and consequent elevation. We have thus a hard, thick, resisting ocean-bottom which, as it settles down toward the interior, under the influence of gravity, squeezes upward and folds and plicates all the soft sediments deposited on its edges. The Atlantic area is almost an unbroken cake of this kind. The Pacific area has cracked in many places, allowing the interior fluid matter to exude in volcanic ejections.

It may be said that all this supposes a permanent continuance of the ocean-basins, whereas many geologists postulate a mid-Atlantic continent¹ to give the thick masses of detritus found in the older formations both in Eastern America and Western Europe, and which thin off in proceeding into the interior of both continents. I prefer, with Hall, to consider these belts of sediment as, in the main, the deposits of northern currents, and derived from Arctic land, and that like the great banks of the American coast at the present day, which are being built up by the present Arctic current, they had little to do with any direct drainage from the adjacent shore. We need not deny, however, that such ridges of land as existed along the Atlantic margins were contributing their quota of river-borne material, just as on a still greater scale the Amazon and Mississippi are doing now, and this especially on the sides toward the present continental plateaus, though the greater part must have been derived from the wide tracts of Laurentian land within the Arctic Circle or near to it. It is further obvious that

¹ Among American geologists, Dana and Le Conte, though from somewhat different premises, maintain continental permanence. Crosby has argued on the other side. In Britain, Hull has elaborated the idea of interchange of oceanic and continental areas in his memoir in *Trans. Dublin Society*, and in his work entitled *The Physical History of the British Islands*. Godwin-Austin argues powerfully for the permanence of the Atlantic basin, *Q. J. Geol. Society*, vol. xii. p. 42. Mellard Reade ably advocates the theory of mutation. The two views require, in my judgment, to be combined. More especially it is necessary to take into the account the existence of an Atlantic ridge of Laurentian rock on the west side of Europe, of which the Hebrides and the oldest rocks of Wales, Ireland, Western France, and Portugal are remnants.

the ordinary reasoning respecting the necessity of continental areas in the present ocean basins would actually oblige us to suppose that the whole of the oceans and continents had repeatedly changed places. This consideration opposes enormous physical difficulties to any theory of alternations of the oceanic and continental areas, except locally at their margins. I would, however, refer you for a more full discussion of these points to the address to be delivered to-morrow by the President of the Geological Section.

But the permanence of the Atlantic depression does not exclude the idea of successive submergences of the continental plateaus and marginal slopes, alternating with periods of elevation, when the ocean retreated from the continents and contracted its limits. In this respect, the Atlantic of to-day is much smaller than it was in those times when it spread widely over the continental plains and slopes, and much larger than it has been in times of continental elevation. This leads us to the further consideration that, while the ocean-beds have been sinking, other areas have been better supported, and constitute the continental plateaus; and that it has been at or near the junctions of these sinking and rising areas that the thickest deposits of detritus, the most extensive foldings, and the greatest ejections of volcanic matter have occurred. There has thus been a permanence of the position of the continents and oceans throughout geological time, but with many oscillations of these areas, producing submergences and emergences of the land. In this way, we can reconcile the vast vicissitudes of the continental areas in different geological periods with that continuity of development from north to south, and from the interiors to the margins, which is so marked a feature. We have, for this reason, to formulate another apparent geological paradox, namely, that while, in one sense, the continental and oceanic areas are permanent, in another, they have been in continual movement. Nor does this view exclude extension of the continental borders or of chains of islands beyond their present limits, at certain periods; and indeed the general principle

already stated, that subsidence of the ocean-bed has produced elevation of the land, implies in earlier periods a shallower ocean and many possibilities as to volcanic islands, and low continental margins creeping out into the sea; while it is also to be noted that there are, as already stated, bordering shelves, constituting shallows in the ocean, which at certain periods have emerged as land.

We are thus compelled to believe in the contemporaneous existence in all geological periods, except perhaps the earliest of them, of three distinct conditions of areas on the surface of the earth. (1) Oceanic areas of deep sea, which always continued to occupy in whole or in part the bed of the present ocean. (2) Continental plateaus and marginal shelves, existing as low flats or higher table-lands liable to periodical submergence and emergence. (3) Lines of plication and folding, more especially along the borders of the oceans, forming elevated portions of land, rarely altogether submerged and constantly affording the material of sedimentary accumulations, while they were also the seats of powerful volcanic ejections.

In the successive geological periods, the continental plateaus, when submerged, owing to their vast extent of warm and shallow sea, have been the great theatres of the development of marine life and of the deposition of organic limestones, and when elevated, they have furnished the abodes of the noblest land faunas and floras. The mountain belts, especially in the north, have been the refuge and stronghold of land life in periods of submergence; and the deep ocean basins have been the perennial abodes of pelagic and abyssal creatures, and the refuge of multitudes of other marine animals and plants in times of continental elevation. These general facts are full of importance with reference to the question of the succession of formations and of life in the geological history of the earth.

So much time has been occupied with these general views, that it would be impossible to trace the history of the Atlantic in detail through the ages of the Palæozoic, Mesozoic, and Tertiary. We may, however, shortly glance at the changes of the three kinds of surface already referred to. The bed

of the ocean seems to have remained, on the whole, abyssal, but there were probably periods when those shallow reaches of the Atlantic which stretch across its most northern portion, and partly separate it from the Arctic basin, presented connecting coasts or continuous chains of islands sufficient to permit animals and plants to pass over.¹ At certain periods also there were, not unlikely, groups of volcanic islands, like the Azores, in the temperate or tropical Atlantic. More especially might this be the case in that early time when it was more like the present Pacific; and the line of the great volcanic belt of the Mediterranean, the mid Atlantic banks, the Azores and the West India Islands point to the possibility of such partial connections. These were stepping-stones, so to speak, over which land organisms might cross, and some of these may be connected with the fabulous or pre-historic Atlantis.²

In the Cambrian and Ordovician periods, the distinctions, already referred to, into continental plateaus, mountain ridges, and ocean depths, were first developed, and we find, already, great masses of sediment accumulating on the seaward sides of the old Laurentian ridges, and internal deposits thinning away from these ridges over the submerged continental areas, and presenting dissimilar conditions of sedimentation. It would seem also that, as Hicks has argued for Europe, and Logan and Hall for America, this Cambrian age was one of slow subsidence of the land previously elevated, accompanied with or caused by thick deposits of detritus

¹ It would seem, from Geikie's description of the Faroe Islands that they may be a remnant of such connecting land, dating from the Cretaceous or Eocene period.

² Dr. Wilson has recently argued that the Atlantis of tradition was really America, and Mr. Hyde Clarke has associated this idea with the early dominance in western Europe of the Iberian race, which Dawkins connects with the Neolithic and Bronze ages of archaeology. My own attention has recently been directed, through specimens presented to the McGill College Museum, by Mr. R. S. Haliburton, to the remarkable resemblance in cranial characters, wampum, and other particulars of the Guanches of the Canaries with aborigines of Eastern America—resemblances which cannot be accidental.

along the borders of the subsiding land, which was probably covered with the decomposing rock arising from long ages of sub-aerial waste.

In the coal-formation age, its characteristic swampy flats stretched in some places far into the shallower parts of the ocean.¹ In the Permian, the great plicated mountain margins were fully developed on both sides of the Atlantic. In the Jurassic, the American continent probably extended further to the sea than at present. In the Wealden age, there was much land to the west and north of Great Britain, and Professor Bonney has directed attention to the evidence of the existence of this land as far back as the Trias, while Mr. Starkie Gardiner has insisted on connecting links to the southward as evidenced by fossil plants. So late as the Post-glacial, or early human period, large tracts, now submerged, formed portions of the continents. On the other hand, the interior plains of America and Europe were often submerged. Such submergences are indicated by the great limestones of the Palæozoic, by the chalk and its representative beds in the Cretaceous, by the Nummulitic formation in the Eocene, and lastly by the great Pleistocene submergence, one of the most remarkable of all, one in which nearly the whole northern hemisphere participated, and which was probably separated from the present time by only a few thousands of years.² These submergences and elevations were not always alike on the two sides of the Atlantic. The Salina period of the Silurian, for example, and the Jurassic, show continental elevation in America not shared by Europe. The great subsidences of the Cretaceous and the Eocene were proportionally deeper and wider on the eastern continent,

¹ I have shown the evidence of this in the remnants of Carboniferous districts once more extensive on the Atlantic coast of Nova Scotia and Cape Breton (*Acadian Geology*.)

² The recent surveys of the Falls of Niagara coincide with a great many evidences to which I have elsewhere referred in proving that the Pleistocene submergence of America and Europe came to an end not more than ten thousand years ago, and was itself not of very great duration. Thus in Pleistocene times the land must have been submerged and re-elevated in a very rapid manner.

and this and the direction of the land being from north to south, cause more ancient forms of life to survive in America. These elevations and submergences of the plateaus alternated with the periods of mountain-making plication, which was going on at intervals at the close of the Eozoic, at the beginning of the Cambrian, at the close of the Siluro-Cambrian, and in Europe and Western America in the Tertiary. The series of changes, however, affecting all these areas was of a highly complex character, and embraces the whole physical history of the geological ages.

We may here note that the unconformities caused by these movements and by subsequent denudation constitute what Le Conte has called 'lost intervals,' and one of the most important of which is supposed to have occurred at the end of the Eozoic. It is to be observed, however, that as every such movement is followed by a gradual subsidence the seeming loss is caused merely by the overlapping of the successive beds deposited.

We may also note a fact which I have long ago insisted on,¹ the regular pulsation of the continental areas, giving us alternations in each great system of formations of deep-sea and shallow-water beds, so that the successive groups of formations may be divided into triplets of shallow-water, deep-water, and shallow-water strata, alternating in each period. This law of succession applies more particularly to the formations of the continental plateaus, rather than to those of the ocean margins, and it shows that, intervening between the great movements of plication, there were subsidences of those plateaus, or elevations of the sea bottom, which allowed the waters to spread themselves over all the inland spaces between the great folded mountain ranges.

In referring to the ocean basins, we should bear in mind that there are three of these in the northern hemisphere—the Arctic, the Pacific, and the Atlantic. De Rance has ably summed up the known facts as to Arctic geology in a series of articles in "Nature," and from which it appears that this area presents from without inwards a succession

¹ *Acadian Geology*, 1865.

of older and newer formations from the Eozoic to the Tertiary, and that its extent must have been greater in former periods than at present, while it must have enjoyed a comparatively warm climate from the Cambrian to the Pleistocene period. The relations of its deposits and fossils are closer with those of the Atlantic than with those of the Pacific, as might be anticipated from its wider opening into the former. Blandford has recently remarked on the correspondence of the marginal deposits around the Pacific and Indian oceans,¹ and Dr. Dawson informs me that this is equally marked in comparison with the west coast of America,² but these marginal areas have not yet gained much on the ocean. In the North Atlantic, on the other hand, there is a wide belt of comparatively modern rocks on both sides, more especially toward the south and on the American side; but while there appears to be a perfect correspondence on both sides of the Atlantic, and around the Pacific respectively, there seems to be less parallelism between the deposits and forms of life of the two oceans as compared with each other, and less correspondence in forms of life, especially in modern times. Still in the earlier geological ages, as might have been anticipated from the imperfect development of the continents, the same forms of life characterise the whole ocean from Australia to Arctic America, and indicate a grand unity of

¹ A singular example is the recurrence in New Zealand of Triassic rocks and fossils of types corresponding to those of British Columbia. A curious modern analogy appears in the works of art of the Maoris with those of the Haida Indians of the Queen Charlotte Islands, and both are eminently Pacific in contradistinction to Atlantic.

² *Journal of Geological Society*, May 1886. Blandford's statements respecting the mechanical deposits of the close of the Palæozoic in the Indian ocean, whether these are glacial or not, would seem to show a correspondence with the Permian conglomerates and earth-movements of the Atlantic area; but since that time, the Atlantic has enjoyed comparative repose. The Pacific seems to have reproduced the conditions of the Carboniferous in the Cretaceous age, and seems to have been less affected by the great changes of the Pleistocene.

Pacific and Atlantic life not equalled in later times,¹ and which speaks of contemporaneity rather than of what has been termed homotaxis.

We may pause here for a moment to notice some of the effects of Atlantic growth on modern geography. It has given us rugged and broken shores composed of old rocks in the north, and newer formations and softer features toward the south. It has given us marginal mountain ridges and internal plateaus on both sides of the sea. It has produced certain curious and by no means accidental correspondences of the eastern and western sides. Thus the solid basis on which the British Islands stand may be compared with Newfoundland and Labrador, the English Channel with the Gulf of St. Lawrence, the Bay of Biscay with the Bay of Maine, Spain with the projection of the American land at Cape Hatteras, the Mediterranean with the Gulf of Mexico. The special conditions of deposition and plication necessary to these results, and their bearing on the character and productions of the Atlantic basin would require a volume for their detailed elucidation.

Thus far our discussion has been limited almost entirely to physical causes and effects. If we now turn to the life history of the Atlantic, we are met at the threshold with the question of climate, not as a thing fixed and immutable, but as changing from age to age in harmony with geographical mutations, and producing long cosmic summers and winters of alternate warmth and refrigeration.

We can scarcely doubt that the close connection of the Atlantic and Arctic oceans is one factor in those remarkable vicissitudes of climate experienced by the former, and in which the Pacific area has also shared in connection with the Antarctic Sea. No geological facts are indeed at first sight more strange and inexplicable than the changes of climate in the Atlantic area, even in comparatively modern periods. We know that in the early Tertiary, perpetual

¹ Daintree and Etheridge, 'Queensland Geology,' *Journal Geological Society*, August 1872; R. Etheridge, Junior, 'Australian Fossils,' *Trans. Phys. Soc.*, Edin. 1880.

summer reigned as far north as the middle of Greenland, and that in the Pleistocene, the Arctic cold advanced until an almost perennial winter prevailed half way to the equator. It is no wonder that nearly every cause available in the heavens and the earth has been invoked to account for these astounding facts.

It will, I hope, meet with the approval of your veteran glaciologist Dr. Crosskey if, neglecting most of these theoretical views, I venture to invite your attention in connection with this question chiefly to the old Lyellian doctrine of the modification of climate by geographical changes. Let us, at least, consider how much these are able to account for.

The ocean is a great equalizer of extremes of temperature. It does this by its great capacity for heat, and by its cooling and heating power when passing from the solid into the liquid and gaseous states, and the reverse. It also acts by its mobility, its currents serving to convey heat to great distances or to cool the air by the movement of cool icy waters. The land, on the other hand, cools or warms rapidly, and can transmit its influence to a distance only by the winds, and the influence so transmitted is rather in the nature of a disturbing than of an equalizing cause. It follows that any change in the distribution of land and water must affect climate, more especially if it changes the character or course of the ocean currents.¹

At the present time, the North Atlantic presents some very peculiar and in some respects exceptional features, which are most instructive with reference to its past history. The great internal plateau of the American continent is now dry land; the passage across Central America between the Atlantic and Pacific is blocked; the Atlantic opens very widely to the north; the high mass of Greenland towers in its northern part. The effects are that the great equatorial current, running across from Africa and embayed in the Gulf of Mexico, is thrown northward and eastward in the

¹ Von Weickoff has very strongly put these principles in a Review of Croll's recent book, *Climate and Cosmology*; *American Journal of Science*, March, 1886.

Gulf Stream, acting as a hot-water apparatus to heat up to an exceptional degree the western coast of Europe. On the other hand, the cold Arctic current from the polar seas is thrown to the westward, and runs down from Greenland past the American shore.¹ The pilot chart for June of this year shows vast fields of drift ice on the western side of the Atlantic as far south as the latitude of 40.° So far, therefore, the Glacial age in that part of the Atlantic still extends; and this at a time when, on the eastern side of the Ocean, the culture of cereals reaches in Norway beyond the Arctic Circle. Let us inquire into some of the details of these phenomena.

The warm water thrown into the North Atlantic not only increases the temperature of its whole waters, but gives an exceptionally mild climate to Western Europe. Still the countervailing influence of the Arctic currents, and the Greenland ice is sufficient to permit icebergs, which creep down to the mouth of the Strait of Belle Isle, in the latitude in the south of England, to remain unmelted till the snows of succeeding winters fall upon them. Now let us suppose that a subsidence of land in tropical America were to allow the equatorial current to pass through into the Pacific. The effect would at once be to reduce the temperature of Norway and Britain to that of Greenland and Labrador at present, while the latter countries would themselves become colder. The northern ice, drifting down into the Atlantic, would not, as now, be melted rapidly by the warm water which it meets in the Gulf Stream. Much larger quantities of it would remain undissolved in summer, and thus an accumulation of permanent ice would take place, along the American coast at first, but probably at length even on the European side. This would still further chill the atmosphere, glaciers would be established on all the mountains of temperate Europe and America,² the summer would be kept cool by melting

¹ I may refer here to the admirable expositions of these effects by the late Dr. Carpenter, in his papers on the results of the explorations of the *Challenger*.

² According to Bonney, the west coast of Wales is about 12° above the average for its latitude, and if reduced to 12° below the average, its mountains would have large glaciers.

ice and snow, and, at length, all Eastern America and Europe might become uninhabitable, except by arctic animals and plants, as far south as perhaps 40° of north latitude. This would be simply a return of the Glacial age. I have assumed only one geographical change; but other and more complete changes of subsidence and elevation might take place, with effects on climate still more decisive; more especially would this be the case if there were a considerable submergence of the land in temperate latitudes.

We may suppose an opposite case. The high plateau of Greenland might subside or be reduced in height, and the North Atlantic might be closed. At the same time, the interior plain of America might be depressed, so that, as we know to have been the case in the Cretaceous period, the warm waters of the Mexican Gulf would circulate as far north as the basins of the present great American lakes. In these circumstances there would be an immense diminution of the sources of floating ice, and a correspondingly vast increase in the surface of warm water. The effects would be to enable a temperate flora to subsist in Greenland, and to bring all the present temperate regions of Europe and America into a condition of sub-tropical verdure.

It is only necessary to add that we know that vicissitudes not dissimilar from those above sketched, have actually occurred in comparatively recent geological times, to enable us to perceive that we can dispense with all other causes of change of climate, though admitting that some of them may have occupied a secondary place.¹ This will give us, in dealing with the distribution of life, the great advantage of not being tied up to definite astronomical cycles of glaciation, which may not always suit the geological facts, and of correlating elevation and subsidence of the land with changes of climate affecting living beings. It will, however, be necessary, as Wallace well insists, that we shall hold to that degree of fixity of the continents in their position, notwithstanding

¹ More especially, the ingenious and elaborate arguments of Croll deserve consideration; and, though I cannot agree with him in this main thesis, I gladly acknowledge the great utility of the work he has done.

the submergences and emergences they have experienced, to which I have already adverted. Sir Charles Lyell, more than forty years ago, published in his 'Principles of Geology' two imaginary maps which illustrate the extreme effects of various distribution of land and water. In one, all the continental masses are grouped around the equator. In the other, they are all placed around the poles, leaving an open equatorial ocean. In the one case, the whole of the land and its inhabitants would enjoy a perpetual summer, and scarcely any ice could exist in the sea. In the other, the whole of the land would be subjected to an Arctic climate, and it would give off immense quantities of ice to cool the ocean. But Lyell did not suppose that any such distribution as that represented in his maps had actually occurred, though this supposition has been sometimes attributed to him. He merely put what he regarded as an extreme case to illustrate what might occur under conditions less exaggerated. Sir Charles, like other thoughtful geologists, was well aware of the general fixity of the areas of the continents, though with great modifications in the matter of submergence and of land conditions. The union, indeed, of these two great principles of fixity and diversity of the continents lies at the foundation of theoretical geology.

We can now more precisely indicate this than was possible when Lyell produced his 'Principles,' and can reproduce the conditions of our continents in even the more ancient periods of their history. Some examples may be taken from the history of the American continent, which is more simple in its arrangements than the double continent of Europ-asia. We may select the early Devonian or Erian period, in which the magnificent flora of that age—the earliest certainly known to us—made its appearance. Imagine the whole interior plain of North America submerged, so that the continent is reduced to two strips on the east and west, connected by a belt of Laurentian land on the north. In the great Mediterranean sea thus produced, the tepid water of the equatorial current circulated, and it swarmed with corals, of which we know no less than one hundred and fifty species, and with other forms of life appro-

priate to warm seas. On the islands and coasts of this sea was introduced the Erian flora, appearing first in the north, and with that vitality and colonising power, of which, as Hooker has well shown, the Scandinavian flora is the best modern type, spreading itself to the south.¹ A very similar distribution of land and water in the Cretaceous age gave a warm and equable climate in those portions of North America not submerged, and coincided with the appearance of the multitude of broad-leaved trees of modern types introduced in the early and middle Cretaceous, and which prepared the way for the mammalian life of the Eocene. We may take a still later instance from the second continental period of the later Pleistocene or early Modern, when there would seem to have been a partial or entire closure of the North Atlantic against the Arctic ice, and wide extensions seaward of the European and American land, with possibly considerable tracts of land in the vicinity of the equator, while the Mediterranean and the Gulf of Mexico were deep inland lakes.² The effect of such conditions on the climates of the northern hemisphere must have been prodigious, and their investigation is rendered all the more interesting because it would seem that this continental period of the post-Glacial age was that in which man made his first acquaintance with the coasts of the Atlantic, and possibly made his way across its waters.

We have in America ancient periods of cold as well as of warmth. I have elsewhere referred to the boulder conglomerates of the Huronian, of the Cambrian and Ordovician, of the Millstone-grit period of the Carboniferous and of the early Permian; but would not venture to affirm that either of these periods was comparable in its cold with the later glacial age, still less with that imaginary age of continental glaciation assumed by certain of the more extreme

¹ As I have elsewhere endeavoured to show (*Report on Silurian and Devonian Plants of Canada*), a warm climate in the Arctic region seems to have afforded the necessary conditions for the great colonising floras of all geological periods. Gray had previously illustrated the same fact in the case of the more modern floras.

² Dawkins, *Popular Science Monthly*, 1873.

theorists.¹ These ancient conglomerates were probably produced by floating ice, and this at periods when in areas not very remote, temperate floras and faunas could flourish. The glacial periods of our old continent occurred in times when the surface of the submerged land was opened up to the northern currents, drifting over it mud and sand and stones, and rendering nugatory, in so far at least as the bottom of the sea was concerned, the effects of the superficial warm streams. Some of these beds are also peculiar to the eastern margin of the continent, and indicate ice-drift along the Atlantic coast in the same manner as at present, while conditions of greater warmth existed in the interior. Even in the more recent Glacial age, while the mountains were covered with snow and the lowlands submerged under a sea laden with ice, there were interior tracts in somewhat high latitudes of America in which hardy forest trees and herbaceous plants flourished abundantly; and these were by no means exceptional 'inter-glacial' periods. Thus we can show that while from the remote Huronian period to the Tertiary, the American land occupied the same position as at present, and while its changes were merely changes of relative level as compared with the sea, these have so influenced the ocean currents as to cause great vicissitudes of climate.

Without entering on any detailed discussion of that last and greatest Glacial period, which is best known to us, and is more immediately connected with the early history of man and the modern animals, it may be proper to make a few general statements bearing on the relative importance of sea-borne and land ice in producing those remarkable phenomena attributable to ice action in this period. In considering this question, it must be borne in mind that the greater masses of floating ice are produced at the seaward extremities of land glaciers, and that the heavy field-ice of the Arctic regions is not so much a result of the direct freezing of the surface of the sea as of the accumulation of snow precipitated on the frozen surface. In reasoning on the

¹ *Notes on Post-Pliocene of Canada*. Hicks, *Pre-Cambrian Glaciers*, *Geol. Mag.*, 1880.

extent of ice action, and especially of glaciers in the Pleistocene age, it is necessary to keep this full in view. Now in the formation of glaciers at present—and it would seem also in any conceivable former state of the earth—it is necessary that extensive evaporation should conspire with great condensation of water in the solid form. Such conditions exist in mountainous regions sufficiently near to the sea, as in Greenland, Norway, the Alps, and the Himalayas; but they do not exist in low arctic lands like Siberia or Grinnel-land, nor in inland mountains. It follows that land glaciation has narrow limits, and that we cannot assume the possibility of great confluent or continental glaciers covering the interior of wide tracts of land. No imaginable increase of cold could render this possible, inasmuch as there could not be a sufficient influx of vapour to produce the necessary condensation; and the greater the cold, the less would be the evaporation. On the other hand, any increase of heat would be felt more rapidly in the thawing and evaporation of land ice and snow than on the surface of the sea.

Applying these very simple geographical truths to the North Atlantic continents, it is easy to perceive that no amount of retriuration could produce a continental glacier, because there could not be sufficient evaporation and precipitation to afford the necessary snow in the interior. The case of Greenland is often referred to, but this is the case of a high mass of cold land with sea, mostly open, on both sides of it, giving, therefore, the conditions most favorable to precipitation of snow. If Greenland were less elevated, or if there were dry plains around it, the case would be quite different, as Nares has well shown by his observations on the summer verdure of Grinnel-land, which, in the immediate vicinity of North Greenland, presents very different conditions as to glaciation and climate.¹ If the plains were submerged, and the Arctic currents allowed free access to the interior of the continent of America, it is conceivable that the mountainous regions remaining out of water would be covered with snow and ice, and there is the best evidence

¹ These views have been admirably illustrated by Von Woeickoff in the paper already referred to and in previous geographical papers.

that this actually occurred in the Glacial period; but with the plains out of water, this would be impossible. We see evidence of this at the present day in the fact that in unusually cold winters the great precipitation of snow takes place south of Canada, leaving the north comparatively bare, while as the temperature becomes milder, the area of snow-deposit moves farther to the north. Thus a greater extension of the Atlantic, and especially of its cold, ice-laden Arctic currents, becomes the most potent cause of a glacial age.

I have long maintained these conclusions on general geographical grounds, as well as on the evidence afforded by the Pleistocene deposits of Canada; and in an address, the theme of which is the ocean, I may be excused for continuing to regard the supposed terminal moraines of great continental glaciers as nothing but the southern limit of the ice-drift of a period of submergence. In such a period, the southern margin of an ice-laden sea, where its floe-ice and bergs grounded, or where its ice was rapidly melted by water, and where, consequently, its burden of boulders and other *debris* was deposited, would necessarily present the aspect of a moraine, which by the long continuance of such conditions, might assume gigantic dimensions. Let it be observed, however, that I fully admit the evidence of the great extension of local glaciers in the Pleistocene age, and especially \pm the times of partial submergence of the land.

I am quite aware that it has been held by many able American geologists¹ that in North America, a continental glacier extended in temperate latitudes from sea to sea, or at least from the Atlantic to the Rocky Mountains, and that this glacier must, in many places, have exceeded a mile in thickness. The reasons above stated appear, however, sufficient to compel us to seek for some other explanation of the observed facts, however difficult this may at first sight appear. With a depression such as we know to have existed, admitting the Arctic currents along the St. Lawrence Valley, through gaps in the Laurentian watershed, and down the great plains between the Laurentian areas and the Rocky

¹ Report of Mr. Carvill Lewis, in *Pennsylvania Geological Survey*, 1884; also Dana's *Manual*.

Mountains, we can easily understand the covering of the hills of Eastern Canada and New England with ice and snow, and a similar covering of the mountains of the west coast. The sea also, in this case, might be ice-laden and boulder-bearing as far south as 40° , while there might still be low islands far to the north on which vegetation and animals continued to exist. We should thus have the conditions necessary to explain all the anomalies of the glacial deposits. Even the glaciation of high mountains south of the St. Lawrence Valley would then become explicable by the grounding of ice on the tops of these mountains when reefs in the sea. In like manner we can understand how on the isolated trappean hill of Belœil, in the St. Lawrence Valley, Laurentian boulders, far removed from their native seats to the north, are perched at a height of 1,200 feet on a narrow peak where no glacier could possibly have left them. The so-called moraine, traceable from the great Missouri Coteau in the west, to the coast of New Jersey, would thus become the mark of the western and southern limit of the subsidence, or of the line along which the cold currents bearing ice were abruptly cut off by warm surface waters. I am glad to find that these considerations are beginning to have weight with European geologists in their explanation of the glacial drift of the great plains of Northern Europe.

Whatever difficulties may attend such a supposition, they are small compared with those attendant on the belief in a continental glacier, moving without the aid of gravity, and depending for its material on the precipitation taking place on the interior plains of a great continent.

I have elsewhere endeavoured to show, on the evidence found in Canada, that the occurrence of marine shells, land plants, and insects in the glacial deposits of that country indicate not so much the effect of several inter-glacial periods, as the local existence of conditions like those of Grinnell-land and Greenland, in proximity to each other at one and the same period, and depending on the relative levels of land and the distribution of ocean currents and ice-drift.¹

¹*Notes on Post-Pliocene of Canada*, 1872. One well-marked interval only has been established in the glacial deposits of Canada.

I am old enough to remember the sensation caused by the delightful revelations of Edward Forbes respecting the zones of animal life in the sea, and the vast insight which they gave into the significance of the work on minute organisms previously done by Ehrenberg, Lonsdale, and Williamson, and into the meaning of fossil remains. A little later, the soundings for the Atlantic cable revealed the chalky foraminiferous ooze of the abyssal ocean; still more recently, the wealth of facts disclosed by the Challenger voyage, which naturalists have not yet had time to digest, have opened up to us new worlds of deep-sea life.

The bed of the deep Atlantic is covered, for the most part, by a mud or ooze, largely made up of the *debris* of foraminifera and other minute organisms mixed with fine clay. In the North Atlantic, the Norwegian naturalists call this the Biloculina mud. Further south, the Challenger naturalists speak of it as Globigerina ooze. In point of fact it contains different species of foraminiferous shells, Globigerina and Orbulina being in some localities dominant, and in others, other species, and these changes are more apparent in the shallower portions of the ocean.

On the other hand, there are means for disseminating coarse material over parts of the ocean-beds. There are, in the line of the Arctic current, on the American coast, great sand-banks, and off the coast of Norway, sand constitutes a considerable part of the bottom material. Soundings and dredgings off Great Britain, and also off the American coast, have shown that fragments of stone referable to Arctic lands are abundantly strewn over the bottom along certain lines, and the Antarctic continent, otherwise almost unknown, makes its presence felt to the dredge by the abundant masses of crystalline rock, drifted far from it to the north. These are not altogether new discoveries. I had inferred many years ago, from stones taken up by the hooks of fishermen on the banks of Newfoundland, that rocky material from the north is dropped on these banks by the heavy ice which drifts over them every spring, that these are glaciated, and that after they fall to the bottom, sand is drifted over them, with sufficient velocity to polish the stones, and to

erode the shelly coverings of Arctic animals attached to them.¹ If then the Atlantic basin were upheaved into land, we should see beds of sand, gravel and boulders with clay flats and layers of marl and limestone. According to the Challenger Reports, in the Antarctic seas S. of 64° there is blue mud, with fragments of rock, in depths of 1,200 to 2,000 fathoms. The stones, some of them glaciated, were granite, diorite, amphibolite, mica schist, gneiss and quartzite. This deposit ceases and gives place to Globigerina ooze and red clay at 46° to 47° S., but even further north, there is sometimes as much as 49 per cent. of crystalline sand. In the Labrador current a block of syenite, weighing 400 lbs., was taken up from 1,340 fathoms, and in the Arctic current, 100 miles from land, was a stony deposit, some stones being glaciated. Among these were smoky quartz, quartzite, limestone, dolomite, mica schist, and serpentine; also particles of monoclinic and triclinic felspar, hornblende, angite, magnetite, mica and glauconite, the latter no doubt formed in the sea-bottom, the others drifted from Eozoic and Palæozoic formations to the north.²

A remarkable fact in this connection is that the great depths of the sea are as impassable to the majority of marine animals as the land itself. According to Murray, while twelve of the Challenger's dredgings, taken in depths greater than 2,000 fathoms, gave 92 species, mostly new to science, a similar number of dredgings in shallower water near the land, gave no less than 1,000 species. Hence arises another apparent paradox relating to the distribution of organic beings. While at first sight it might seem that the chances of wide distribution are exceptionally great for marine species, this is not so. Except in the case of those which enjoy a period of free locomotion when young, or are floating and pelagic, the deep ocean sets bounds to their migrations. On the other hand, the spores of cryptogamic plants may be carried for vast distances by the wind, and the growth of volcanic islands may affect connections which, though only

¹ *Notes on Post-Pliocene of Canada*, 1872.

² *General Report, 'Challenger' Expedition.*

temporary, may afford opportunity for land animals and plants to pass over.

With reference to the transmission of living beings across the Atlantic, we have before us the remarkable fact that from the Cambrian age onwards there were, on the two sides of the ocean, many species of invertebrate animals which, were either identical or so closely allied as to be possibly varietal forms.¹ In like manner, the early plants of the Upper Silurian, Devonian, and Carboniferous, present many identical species, but this identity becomes less marked in the vegetation of the more modern times. Even in the latter, however, there are remarkable connections between the floras of oceanic islands and the continents, which establish this conclusively. Thus the Bermudas, altogether recent islands, have been stocked by the agency chiefly of the ocean currents and of birds, with nearly 150 species of continental plants, and the facts collected by Helmsley as to the present facilities of transmission, along with the evidence afforded by older oceanic islands which have been receiving animal and vegetable colonists for longer periods, go far to show that, time being given, the sea actually affords facilities for the migration of the inhabitants of the land, comparable with those of continuous continents.

In so far as plants are concerned, it is to be observed that the early forests were largely composed of cryptogamous plants, and the spores of these in modern times have proved capable of transmission for great distances. In considering this, we cannot fail to conclude that the union of simple cryptogamous fructification with arboreal stems of high complexity, so well illustrated by Dr. Williamson, had a direct relation to the necessity for a rapid and wide distribution of these ancient trees. It seems also certain that

¹ See Davidson's *Monographs on Brachiopods*; Etheridge, *Address to Geological Society of London*; Woodward, *Address to Geologists' Association*; also Barrande's *Special Memoirs on the Brachiopods, Cephalopods, &c.*; and Hall, *Palæontology of New York*; Billings, *Reports, on Canadian Fossils*; and Matthews, *Cambrian of New Brunswick*, *Trans. R. S. C.*

some spores, as, for example, those of the Rhizocarps,¹ a type of vegetation abundant in the Palæozoic, and certain kinds of seeds, as those named *Ætheotesta* and *Pachythea*, were fitted for flotation. Farther, the periods of Arctic warmth permitted the passage around the northern belt of many temperate species of plants, just as now happens with the Arctic flora; and when these were displaced by colder periods, they marched southward along both sides of the sea on the mountain chains.

The same remark applies to northern forms of marine invertebrates, which are much more widely distributed in longitude than those further south. The late Mr. Gwyn Jeffreys, in one of his latest communications to this Association, stated that 54 per cent. of the shallow-water mollusks of New England and Canada are also European, and of the deep-sea forms. 30 out of 35; these last, of course, enjoying greater facilities for migration than those which have to travel slowly along the shallows of the coast in order to cross the ocean and settle themselves on both sides. Many of these animals, like the common mussel and sand clam, are old settlers which came over in the Pleistocene period, or even earlier. Others, like the common periwinkle, seem to have been slowly extending themselves in modern times, perhaps even by the agency of man. The older immigrants may possibly have taken advantage of lines of coast now submerged, or of warm periods, when they could creep around the Arctic shores. Mr. Herbert Carpenter and other naturalists employed on the Challenger collections have made similar statements respecting other marine invertebrates, as, for instance, the Echinoderms, of which the deep-sea crinoids present many common species, and my own collections prove that many of the shallow-water forms are common. Dall and Whiteaves² have shown that some mollusks and Echinoderms are common even to the Atlantic and Pacific coasts of North America; a remarkable fact, testifying at once to the fixity of these

¹ See paper by the author on Palæozoic Rhizocarps, *Chicago Trans.* 1886.

² Dall, *Report on Alaska*; Whiteaves, *Trans. R. S. C.*

species and to the manner in which they have been able to take advantage of geographical changes. Some of the species of whelks common to the Gulf of St. Lawrence and the Pacific are animals which have no special locomotive powers even when young, but they are northern forms not proceeding far south, so that they may have passed through the Arctic seas. In this connection it is well to remark that many species of animals have powers of locomotion in youth which they lose when adult, and that others may have special means of transit. I once found at Gaspé a specimen of the Pacific species of *Coronula*, or whale-barnacle, the *C. reginae* of Darwin, attached to a whale taken in the Gulf of St. Lawrence, and which had probably succeeded in making that passage around the north of America which so many navigators have essayed in vain.

But it is to be remarked that while many plants and marine invertebrates are common to the two sides of the Atlantic, it is different with land animals, and especially vertebrates. I do not know that any palæozoic insects or land snails or millipedes of Europe and America are specifically identical, and of the numerous species of batrachians of the Carboniferous and reptiles of the Mesozoic all seem to be distinct on the two sides. The same appears to be the case with the Tertiary mammals, until in the later stages of that great period we find such genera as the horse, the camel, and the elephant appearing on the two sides of the Atlantic; but even then the species seem different, except in the case of a few northern forms.

Some of the longer-lived mollusks of the Atlantic furnish suggestions which remarkably illustrate the biological aspect of these questions. Our familiar friend the oyster is one of these. The first known oysters appear in the Carboniferous in Belgium and in the United States of America. In the Carboniferous and Permian they are few and small, and they do not culminate till the Cretaceous, in which there are no less than ninety-one so-called species in America alone; but some of the largest known species are found in the Eocene. The oyster, though an inhabitant of shallow water, and very limitedly locomotive when young, has

survived all the changes since the Carboniferous age, and has spread itself over the whole northern hemisphere.¹

I have collected fossil oysters in the Cretaceous clays of the coulées of Western Canada, in the Lias shales of England, in the Eocene and Cretaceous beds of the Alps, of Egypt, of the Red Sea coast, of Judea, and the heights of Lebanon. Everywhere and in all formations they present forms which are so variable and yet so similar that one might suppose all the so-called species to be mere varieties. Did the oyster originate separately on the two sides of the Atlantic, or did it cross over so promptly that its appearance seems to be identical on the two sides? Are all the oysters of a common ancestry, or did the causes, whatever they were, which introduced the oyster in the Carboniferous act over again in later periods? Who can tell? This is one of the cases where causation and development—the two scientific factors which constitute the basis of what is vaguely called evolution—cannot easily be isolated. I would recommend to those biologists who discuss these questions to addict themselves to the oyster. This familiar mollusk has successfully pursued its course and has overcome all its enemies, from the flat-toothed selachians of the Carboniferous to the oyster-dredgers of the present day, has varied almost indefinitely, and yet has continued to be an oyster, unless indeed it may at certain portions of its career have temporarily assumed the guise of a *Gryphæa* or an *Exogyra*. The history of such an animal deserves to be traced with care, and much curious information respecting it will be found in the report which I have cited.

But in these respects the oyster is merely an example of many forms. Similar considerations apply to all those Pliocene and Pleistocene mollusks which are found in the raised sea-bottoms of Norway and Scotland, on the top of Moel Tryfaen in Wales, and at similar great heights on the hills of America, many of which can be traced back to early Tertiary times, and can be found to have extended themselves over all the seas of the northern hemisphere. They apply in like manner to the ferns, the conifers, and

¹ White, *Report U.S. Geol. Survey*, 1882-83.

the angiosperms, many of which we can now follow without even specific change to the Eocene and Cretaceous. They all show that the forms of living things are more stable than the lands and seas in which they live. If we were to adopt some of the modern ideas of evolution we might cut the Gordian knot by supposing that, as like causes produce like effects, these types of life have originated more than once in geological time, and need not be genetically connected with each other. But while evolutionists repudiate such an application of their doctrine, however natural and rational, it would seem that nature still more strongly repudiates it, and will not allow us to assume more than one origin for one species. Thus the great question of geographical distribution remains in all its force, and, by still another of our geological paradoxes, mountains become ephemeral things in comparison with the delicate herbage which covers them, and seas are in their present extent but of yesterday, when compared with the minute and feeble organisms that creep on their sands or swim in their waters.

The question remains: Has the Atlantic achieved its destiny and finished its course, or are there other changes in store for it in the future? The earth's crust is now thicker and stronger than ever before, and its great ribs of crushed and folded rock are more firm and rigid than in any previous period. The stupendous volcanic phenomena manifested in Mesozoic and early Tertiary times along the borders of the Atlantic have apparently died out. These facts are in so far guarantees of permanence. On the other hand, it is known that movements of elevation along with local depression are in progress in the Arctic regions, and a great weight of new sediment is being deposited along the borders of the Atlantic, especially on its western side, and this is not improbably connected with the earthquake shocks and slight movements of depression which have occurred in North America. It is possible that these slow and secular movements may go on uninterruptedly, or with occasional paroxysmal disturbances, until considerable changes are produced.

It is possible, on the other hand, that after the long period of quiescence which has elapsed, there may be a new settlement of the ocean-bed, accompanied with foldings of the crust, especially on the western side of the Atlantic, and possibly with renewed volcanic activity on its eastern margin. In either case, a long time relatively to our limited human chronology may intervene before the occurrence of any marked change. On the whole, the experience of the past would lead us to expect movements and eruptive discharges in the Pacific rather than in the Atlantic area. It is therefore not unlikely that the Atlantic may remain undisturbed, unless secondarily and indirectly, until after the Pacific area shall have attained to a greater degree of quiescence than at present. But this subject is one too much involved in uncertainty to warrant us in following it farther.

In the meantime the Atlantic is to us a practically permanent ocean, varying only in its tides, its currents, and its winds, which science has already reduced to definite laws, so that we can use if we cannot regulate them. It is ours to take advantage of this precious time of quietude, and to extend the blessings of science and of our Christian civilisation from shore to shore until there shall be no more sea, not in the sense of that final drying-up of old ocean to which some physicists look forward, but in the higher sense of its ceasing to be the emblem of unrest and disturbance, and the cause of isolation.

I must now close this address with a short statement of some general truths which I have had in view in directing your attention to the geological development of the Atlantic. We cannot, I think, consider the topics to which I have referred without perceiving that the history of ocean and continent is an example of progressive design, quite as much as that of living beings. Nor can we fail to see that, while in some important directions we have penetrated the great secret of nature, in reference to the general plan and structure of the earth and its waters, and the changes through which they have passed, we have still very much to learn, and perhaps quite as much to unlearn, and that the future

holds out to us and to our successors higher, grander, and clearer conceptions than those to which we have yet attained. The vastness and the might of ocean and the manner in which it cherishes the feeblest and most fragile beings, alike speak to us of Him who holds it in the hollow of His hand, and gave to it of old, its boundaries and its laws; but its teaching ascends to a higher tone when we consider its origin and history, and the manner in which it has been made to build up continents and mountain-chains, and, at the same time, to nourish and sustain the teeming life of sea and land.

