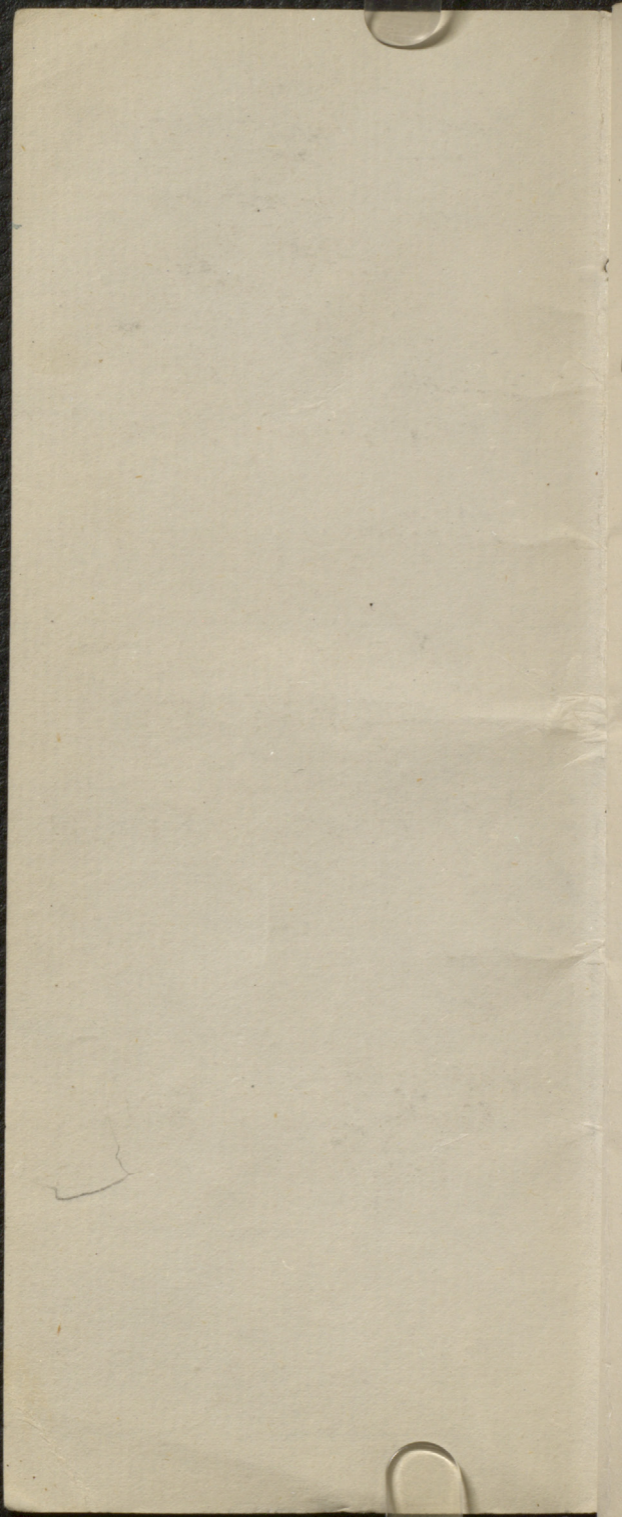


Amplett

in
Dulhoma

80



Laura - Dorney

Mr. Amley

S. Rogers

July 1879

Take 8 00

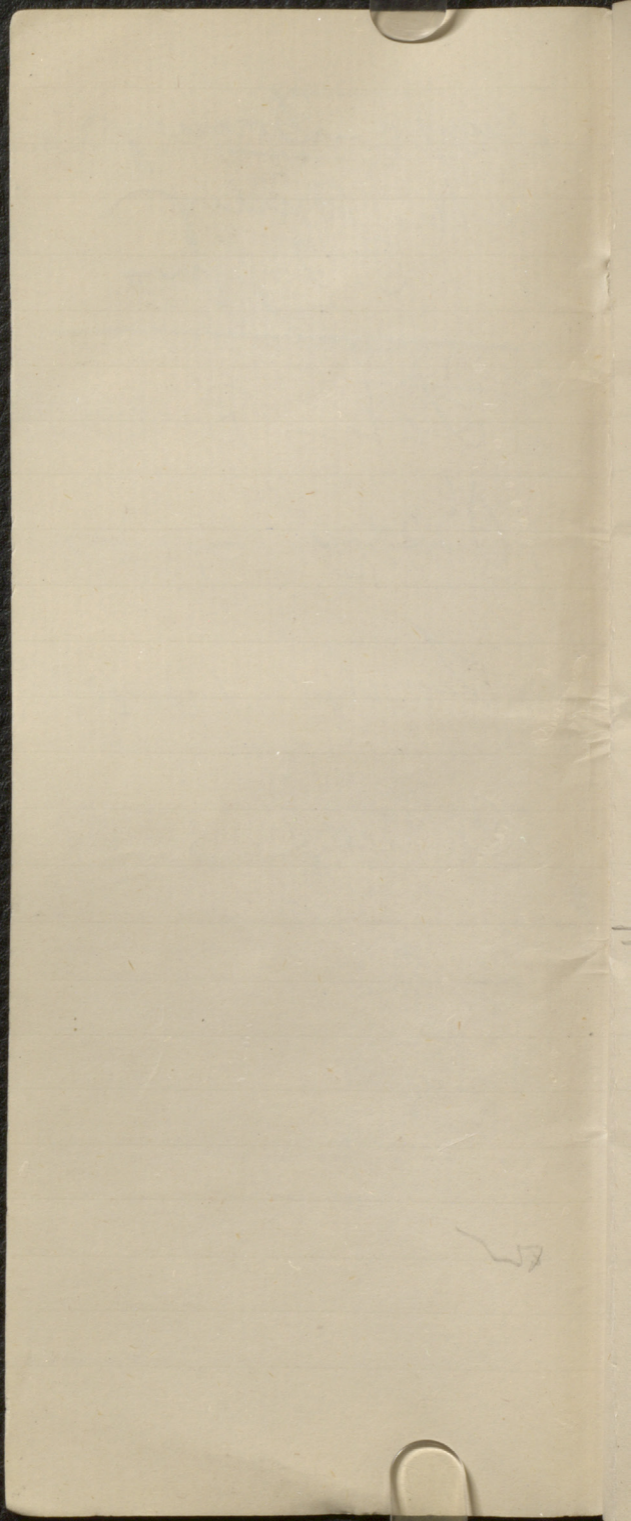
Boxes 4.00

Lodging 10.00

Carriage 3.00

See also

Don
Passage to
Donkey
bag 6



Bankfield
Dunwich

S. 50 W. at
angle of 55°

Thickness of
~~stratified~~
numerous layers
in gray

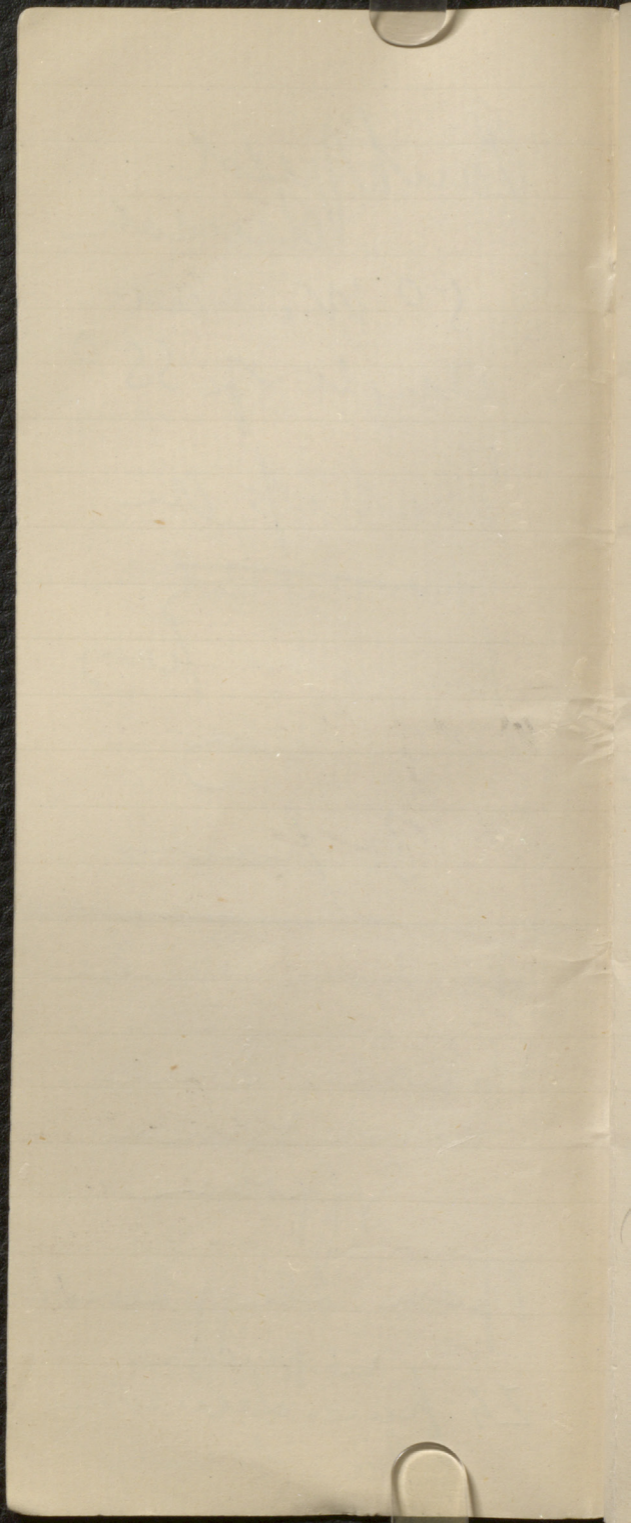
30 paces

Loam in Parker

16 paces blue
hard stone
Gypsum

1 pace Gypsum
Limestone

24 paces Limestone
with fossils
to face of quarry



29 paces to
last fence
on top of
bank
Just seen
but probably
mine

Buckfield Quarry
the Drivels
3 miles from Buckfield
Station, 2 m
from Railways
near Mr Harvey
North of very

Jacob Waring

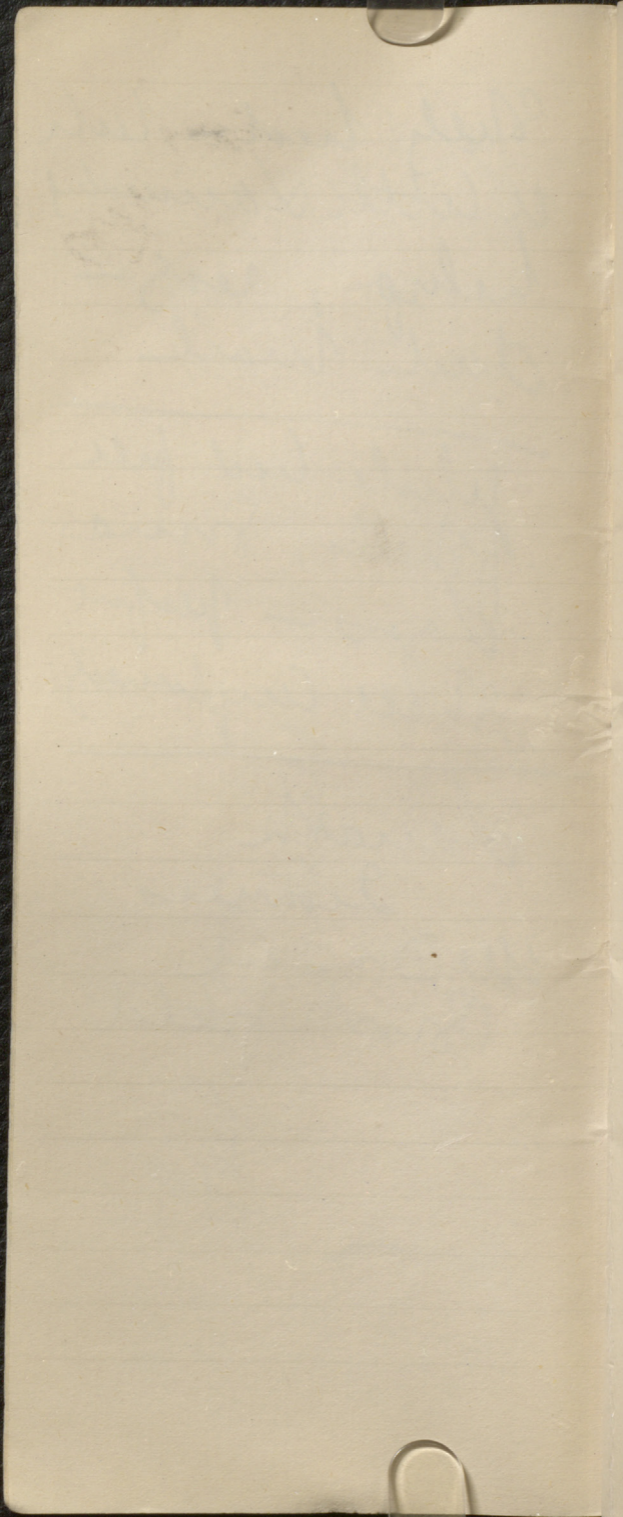
Brookfield

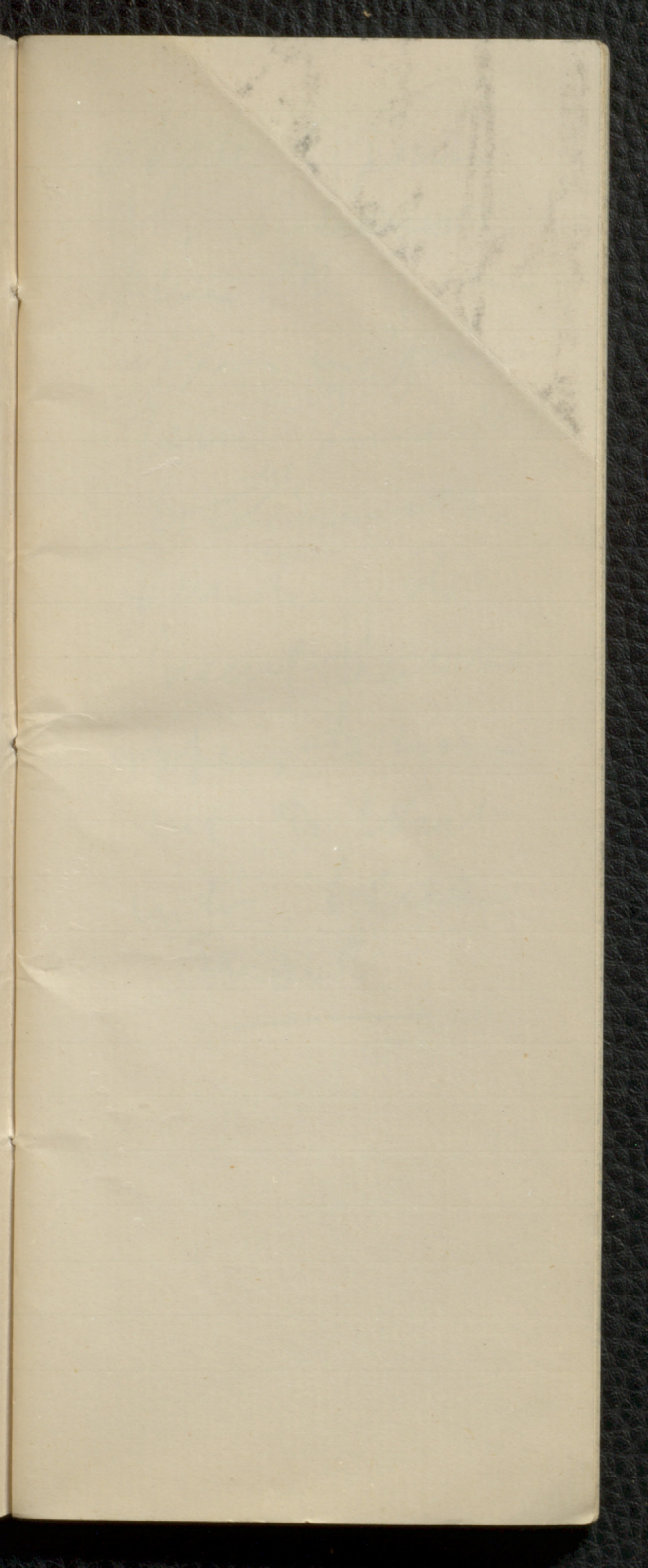
7

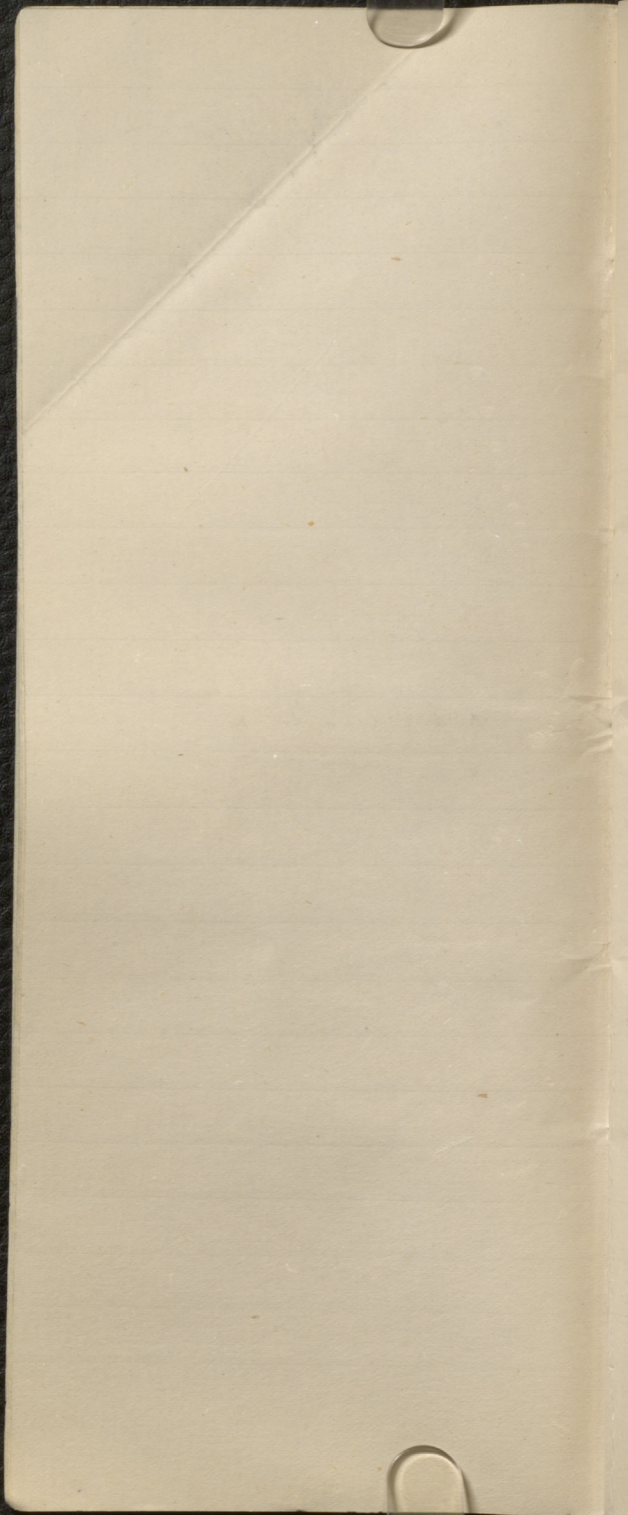
Shaly bed - took
a little Lammings
help, very -
dark marl

White bed full
of shells, some
Leyes - perfect
shell impressions

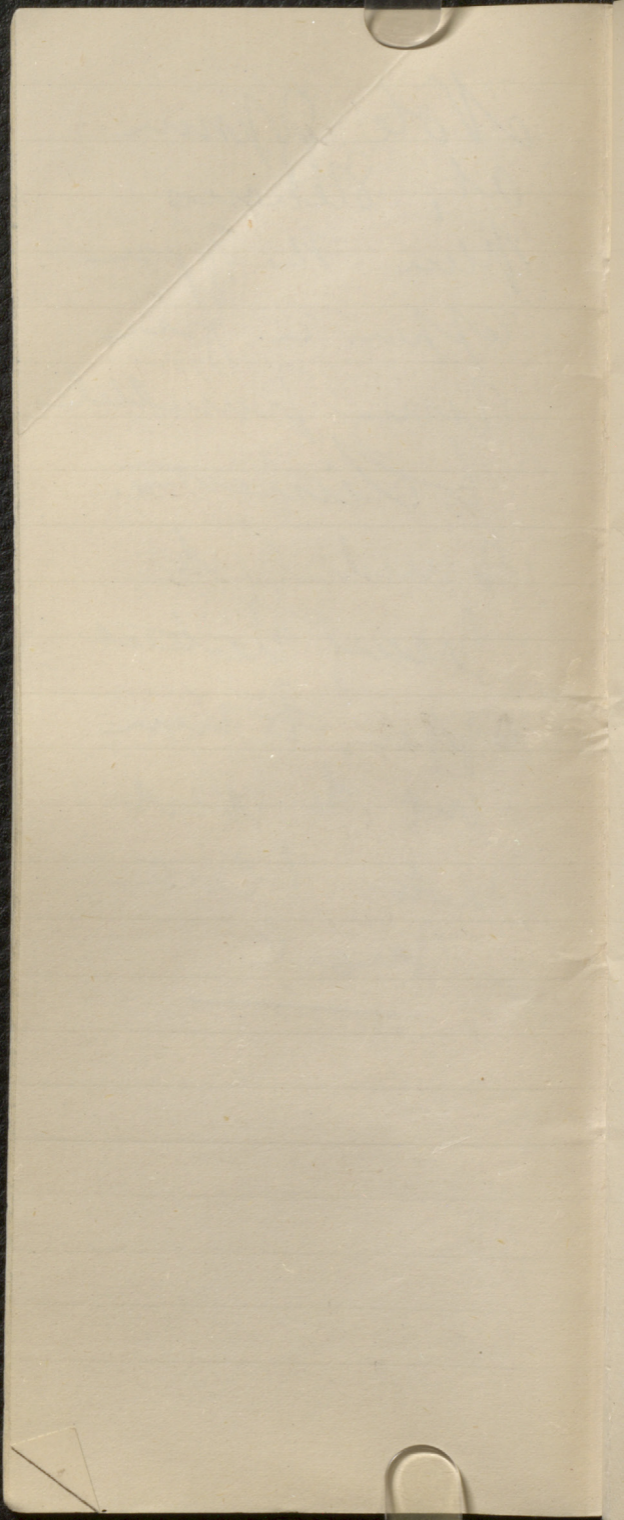
Lamarck
Leornies
McDonnell
Brockfield







Note of
at, Stevens
The
appears in
very parallel
to limestone
& evidently to
near vertical
appears to run
out to West
into blue
marl



Say Thruer Metals

has yellow belts

by your eyes

action when

taken from

black spots

in front

& dark shape

of pupil

? of same

with new

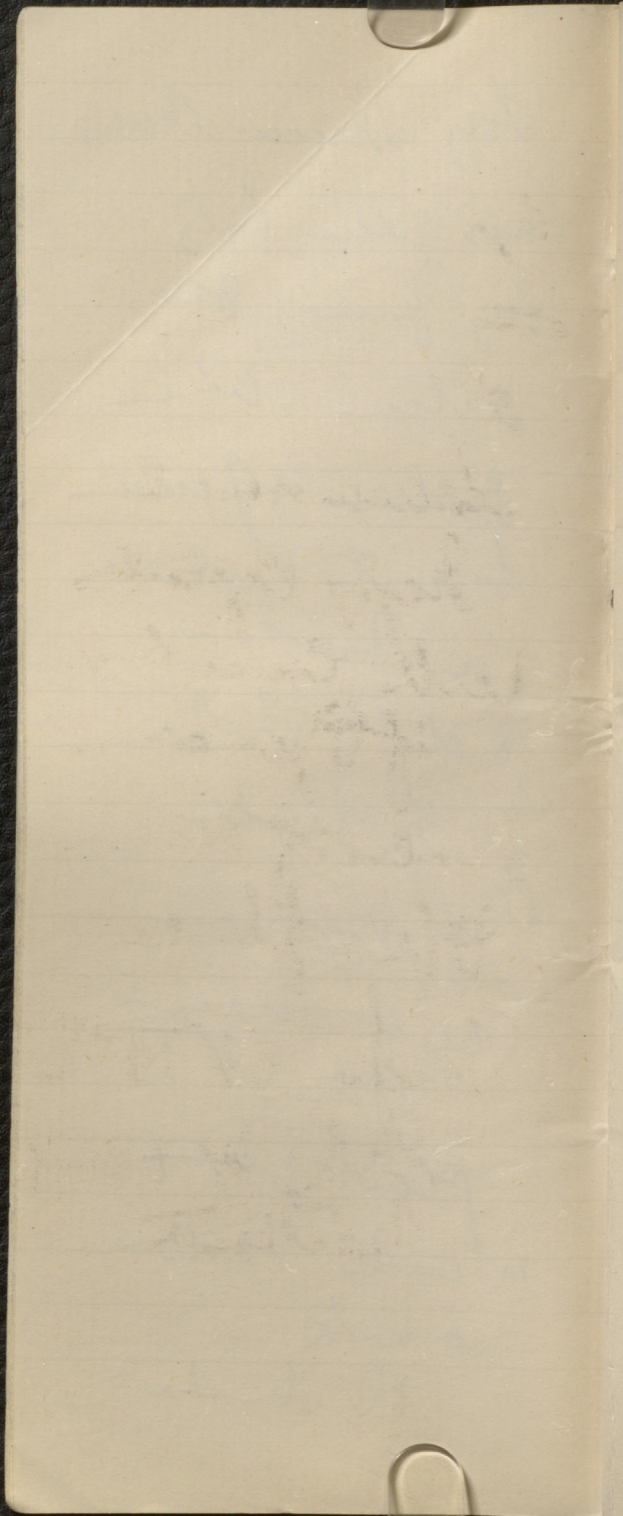
from

of last year

a with Todown

a with

R. M. S. J.



Lachute
May 29/80

Lament Limestone
Laminated &
heavy crystals
with laminae
of Pyrene
Dives of the
Opaphite
Strike at $10^{\circ} E$
Dip W near
vertical

4 2 tenths
to Amuse at the
for Bond

3, 10ths for
Wm
Bond
ap
to the

Sydney
of Dasher
July 27/80

One acre
Soft muds for
Bunker
Dip at 60°

Cryline & mud
20 ft
Mud mud
Mud red grains
of Syonites

Fluffy grey mud
very a grey
30 ft

Dip at 40° to 15°

Great lens
of this bed
cut by dyke
to NW
Can plants
from slopes
Polo

Thick 100ft
when
shag of clay hard
thick base
sandstone
all grey or
dip shaly
The no plan arranged +
shag layer left yesterday
was black

Then beds success
by hand and
Name success
Series with
Very plants of
Planchettes &
Paper plants
Boxes
& few steps

Whole Planchettes -
Syr +

Sp along line
is as by us
40°

Further on
Capped by red
Cuprous

? Brumwell
Dip changes to
Steeper dip to
East

800 Antennas
Scud of
Bay many
with Shrike
Shore

~~Summer~~

~~Interest cliff 300 ft~~

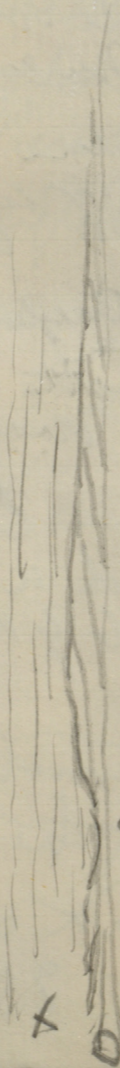
~~All in all~~

~~Red Ash~~

~~Summer~~

645

Wigman 185



x Brownish

o Green

x

o

Denney

1 sandstone 30 ft

2 shale 20 ft

3 sandstone 20 ft

4 shale 30 ft

5 shale & shaly 10 ft

6 shale & shaly

many 20 ft

7 sandstone shaly beds
flaggy with thin
beds 60 ft

fine conglomerate 6 ft

with old

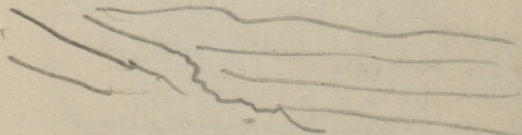
meta

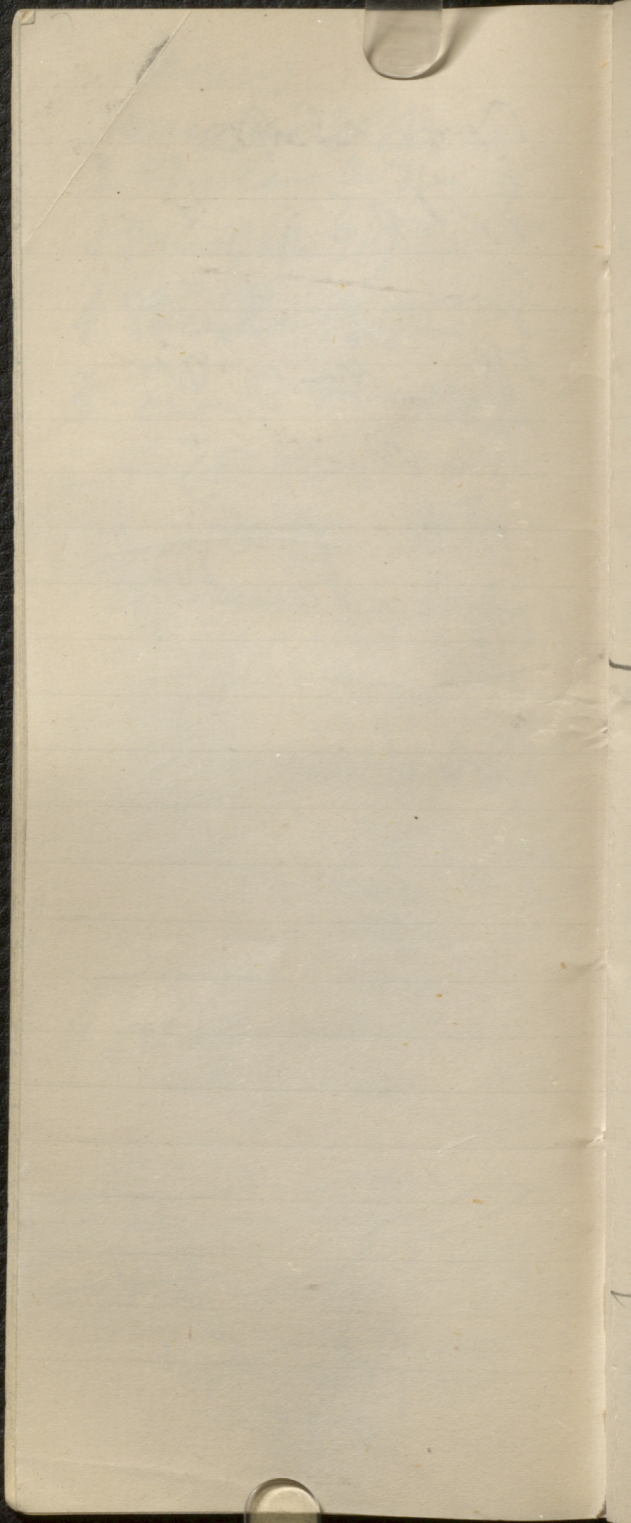
pebbles

Break a ledge
at 1/4 mile

Beyond this
shaly beds with
with sh. ss
250

Antly Ink
I. 408 at
Gravelly eye
Then red &
Mottled legs
with ~~capitulum~~
Pencil tips
This caper
red sand
MS 60
Low cup





Luchato
Nov 13 / 80

Lucretia Mabe
N 20° E
Beckline

General

Wood Gray dyke
N 56° E West
Course shown
See spec
Venture

Patrick Dunbar
John Todd
Linnell

At Newby Cully
calaps no fossils
Mutes the Pils
dune

At Genesee
Mutes
are sometimes
with fossils & of
calaps or dunes
See P.

100 pas an

Rakes gally chum
in gloves —

Amor of weak
minds

greaty Amu spalls
Run —

greaty using in all
of churhan chum
Remore fold dat
chuses

Synagogue

Parents what do you
children learn —

Teachy awake
then finally

Philes of students
Alle Sem

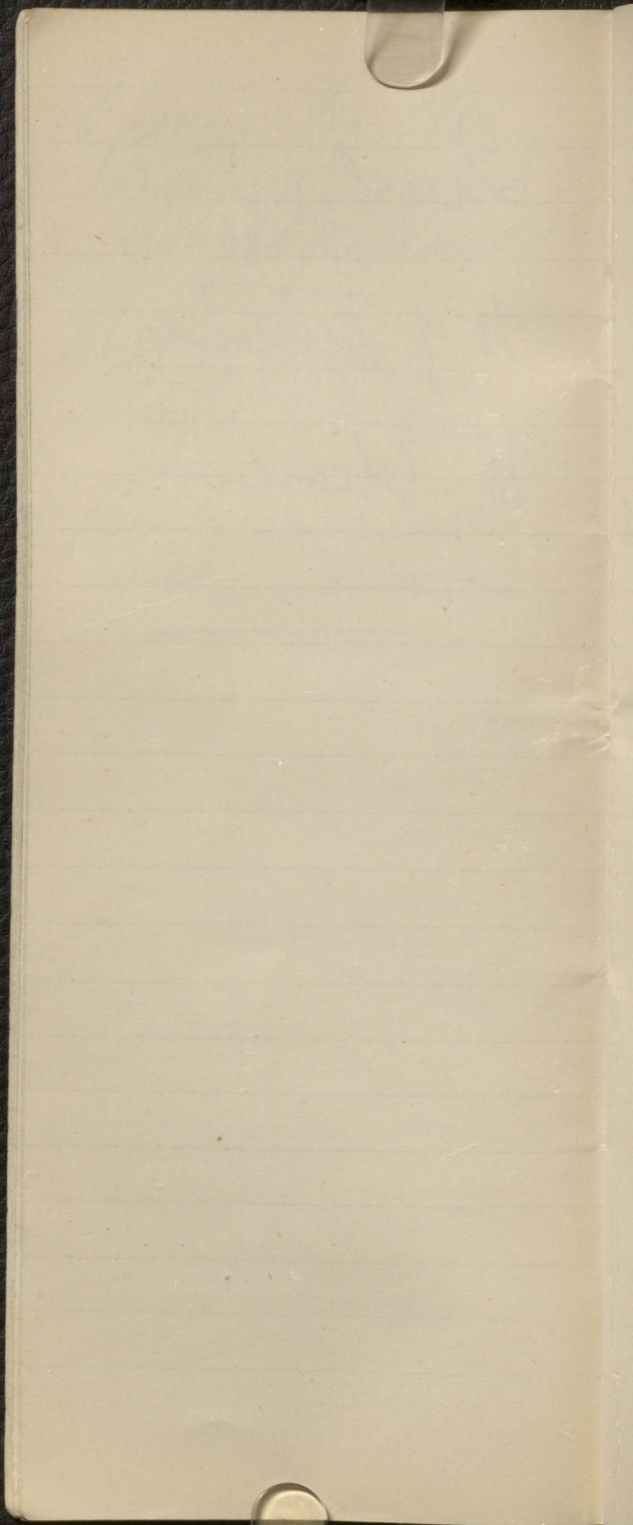
You will meet with
opportunity
and

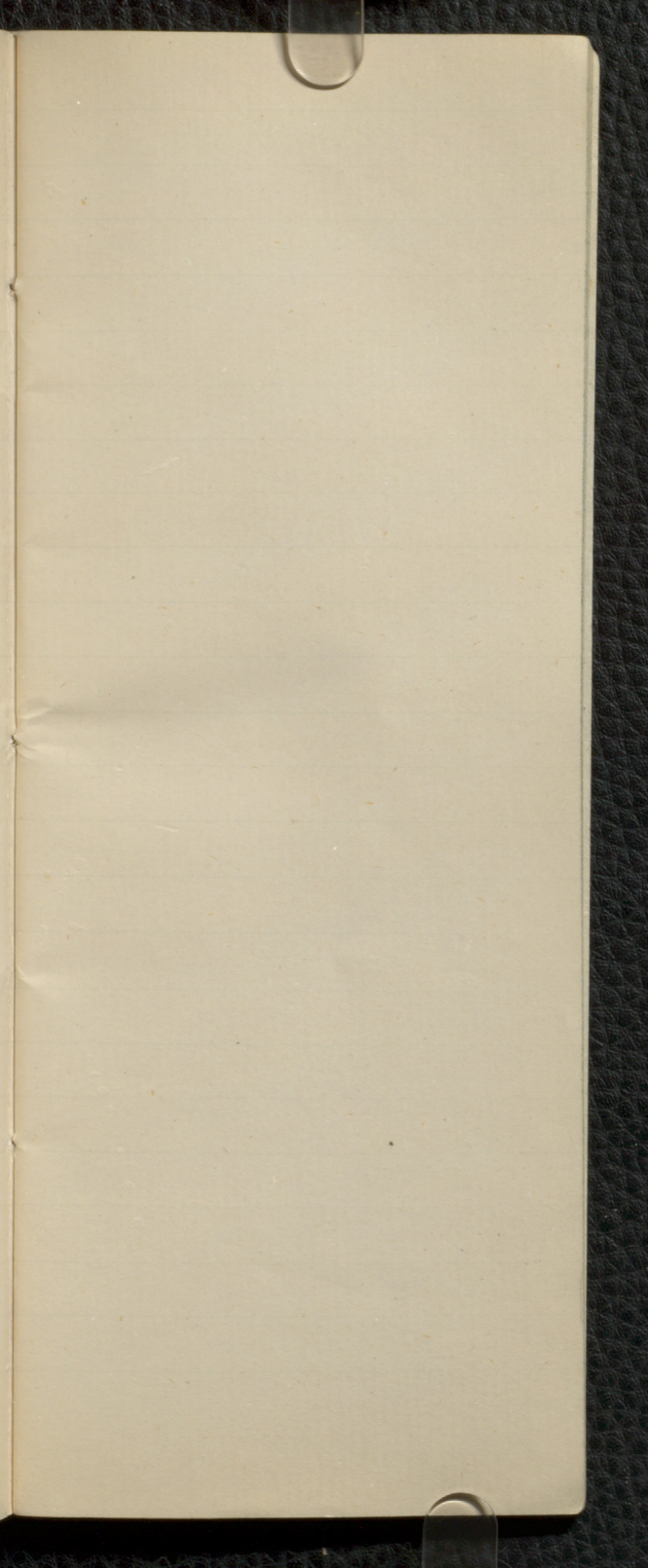
Opening for children
and young
delightful places

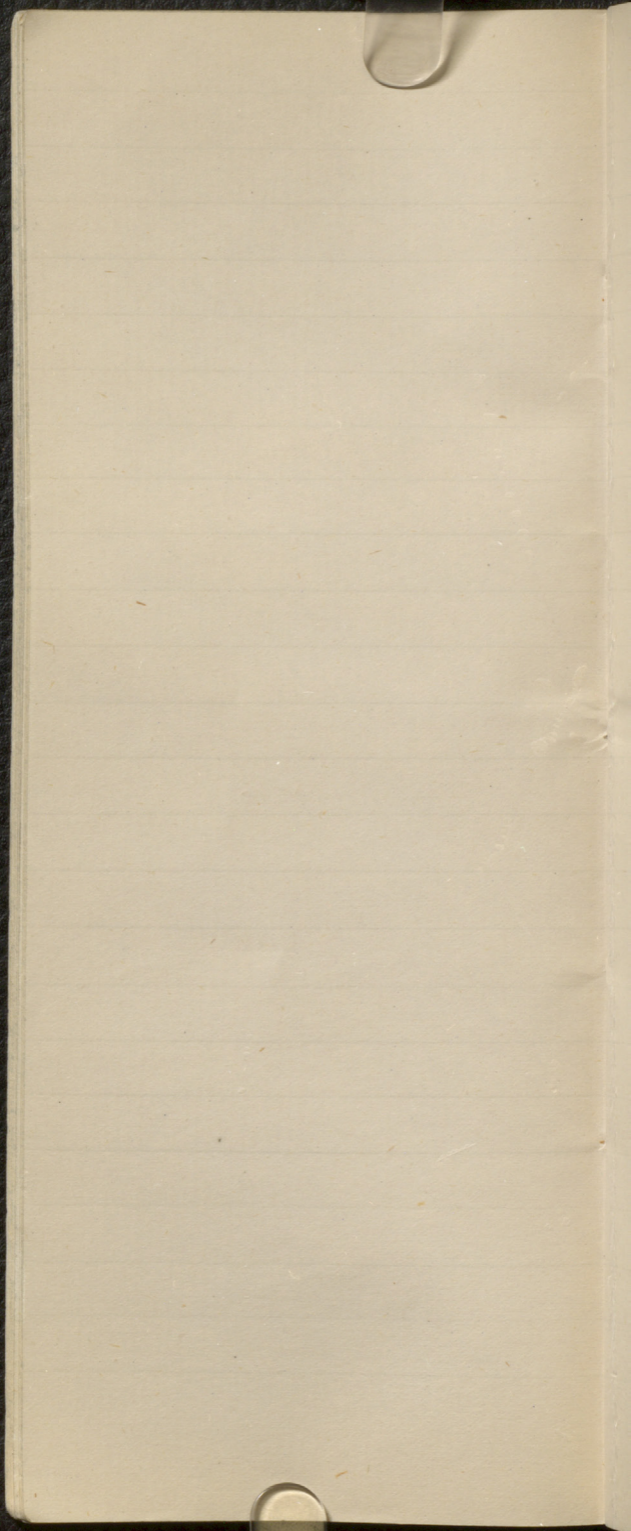
What of bread
help schools

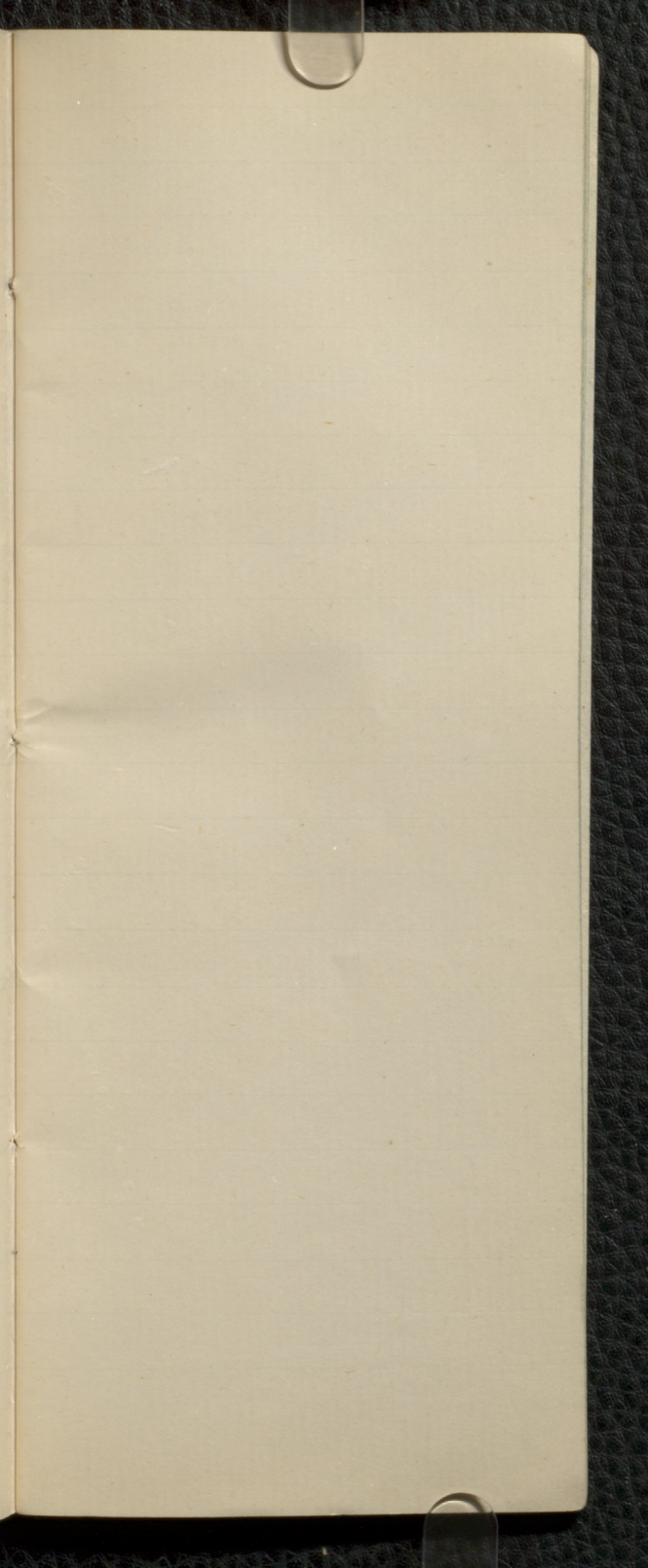
Remember
there without

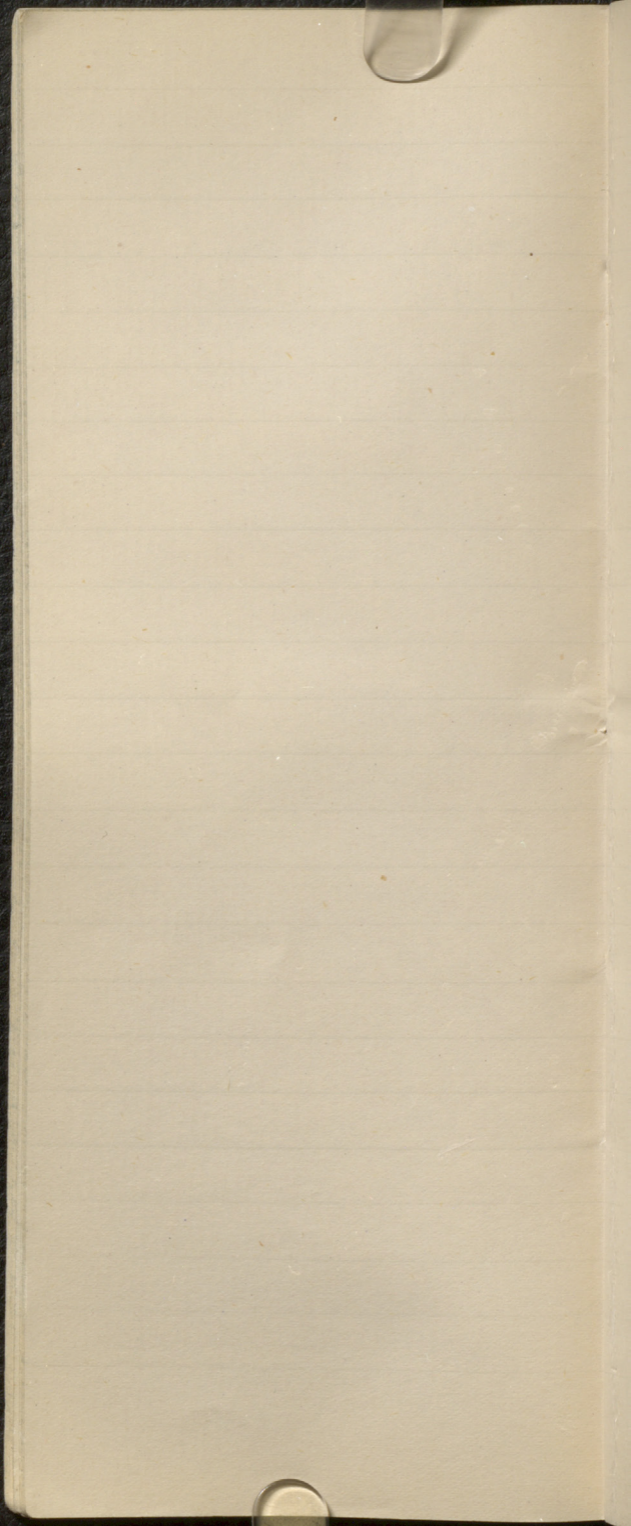
Lurly's was
W. J. Mitchell
Mr. Charlbon

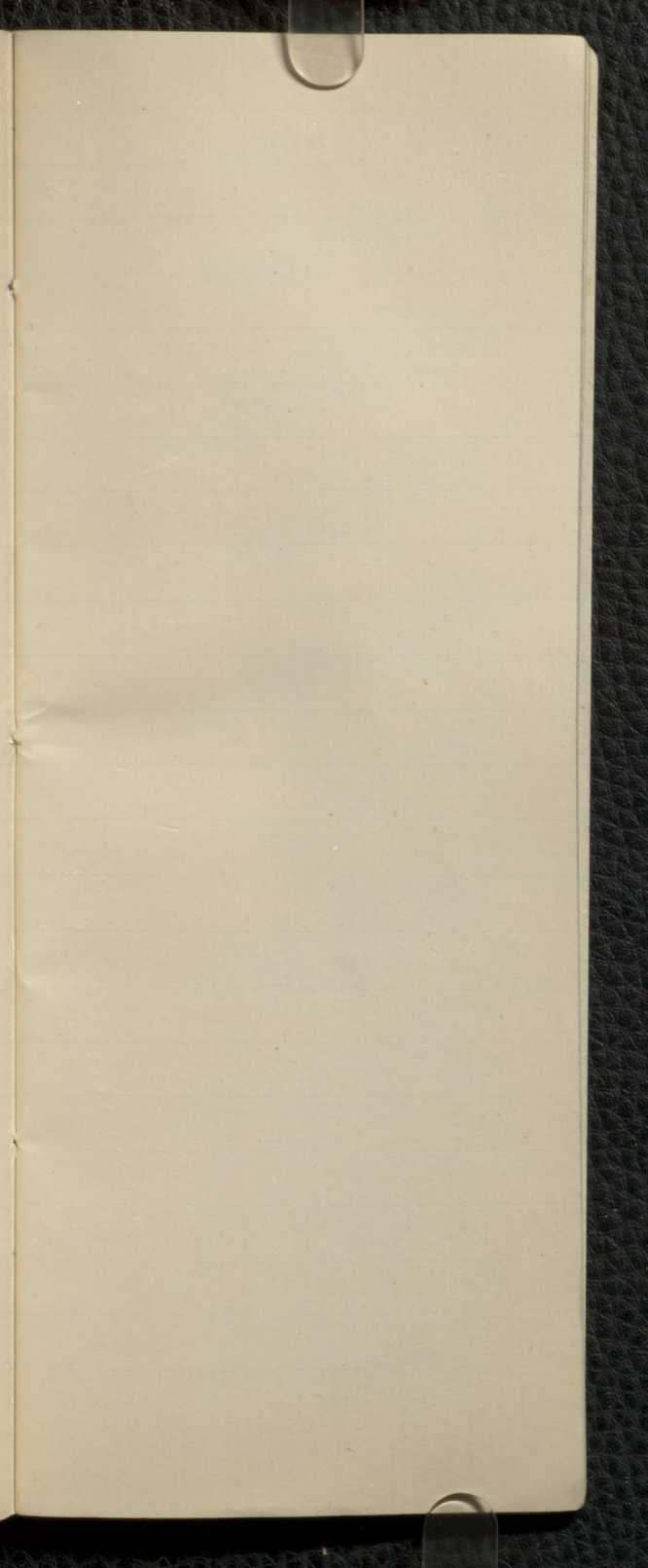


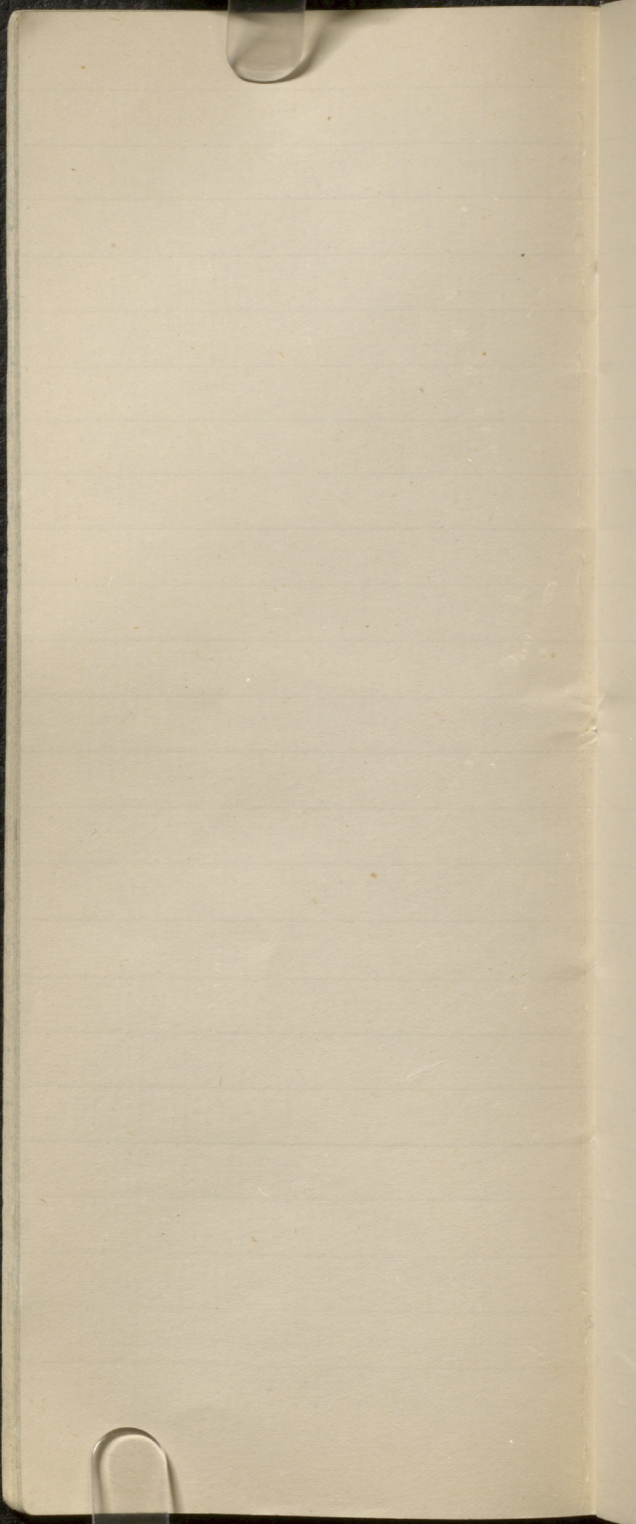


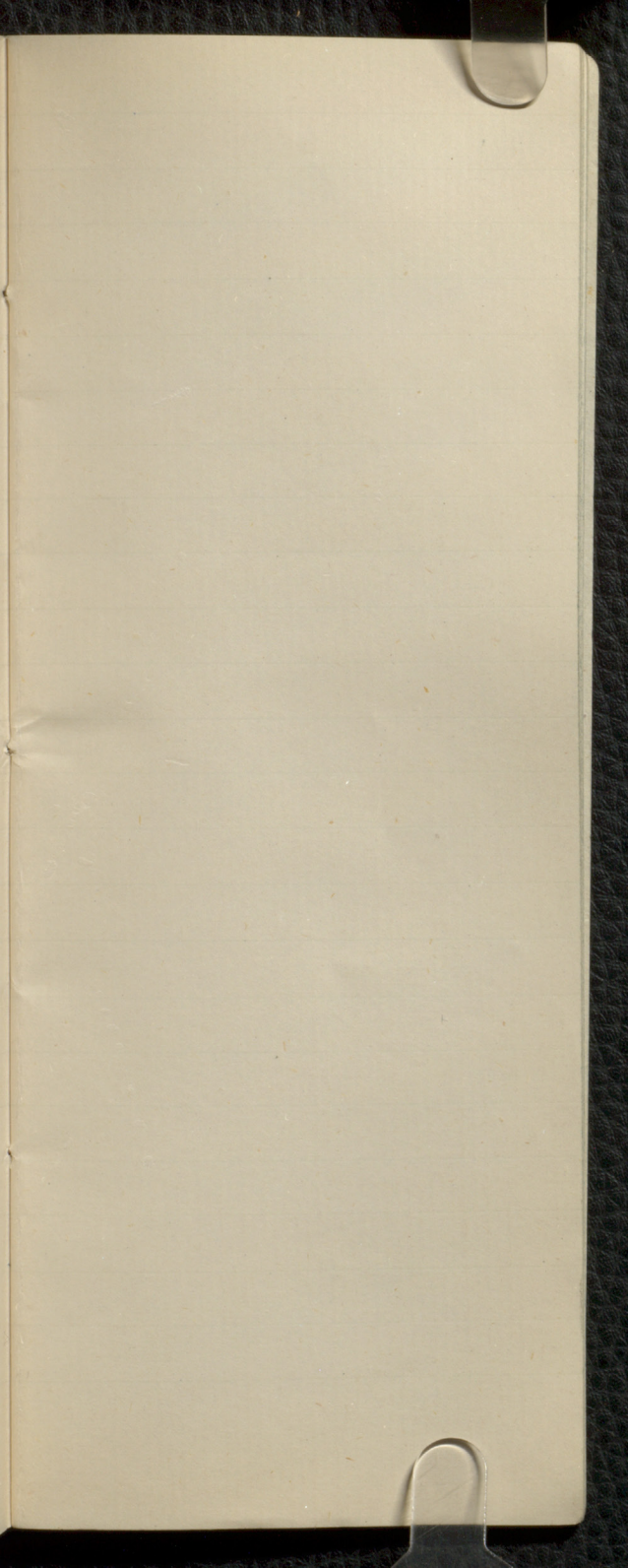


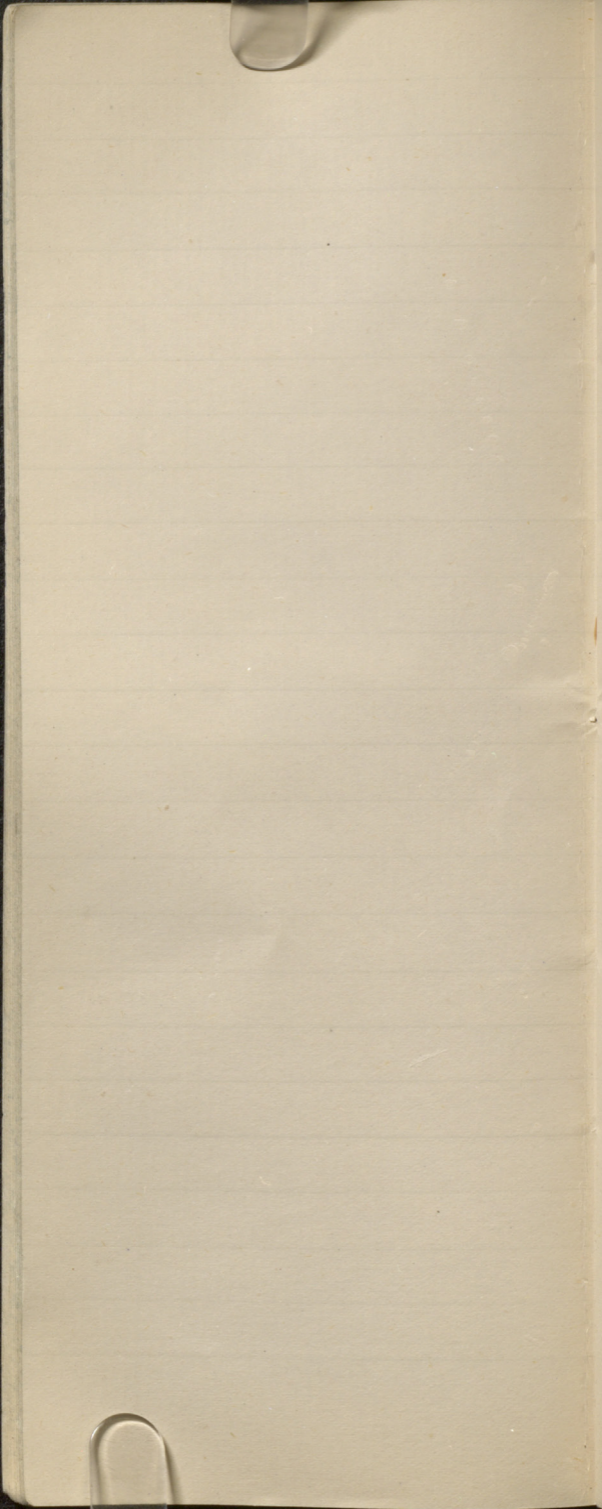


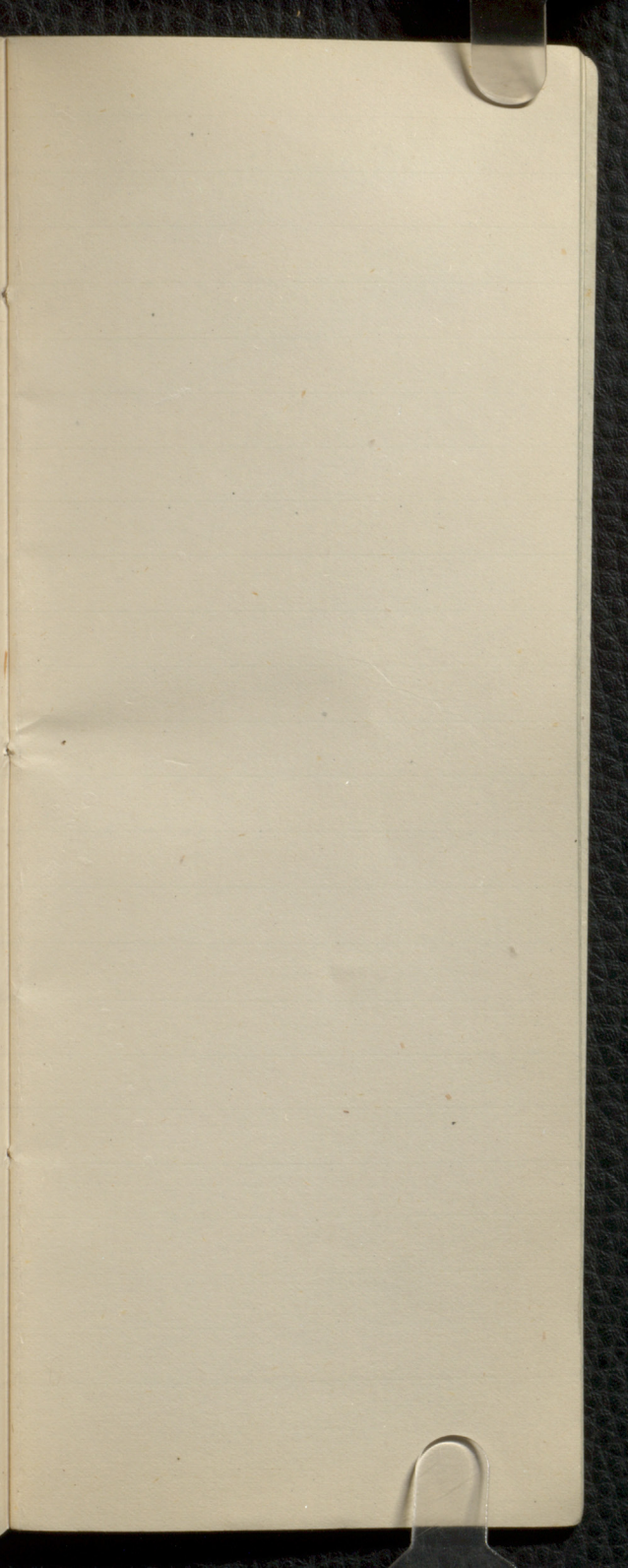




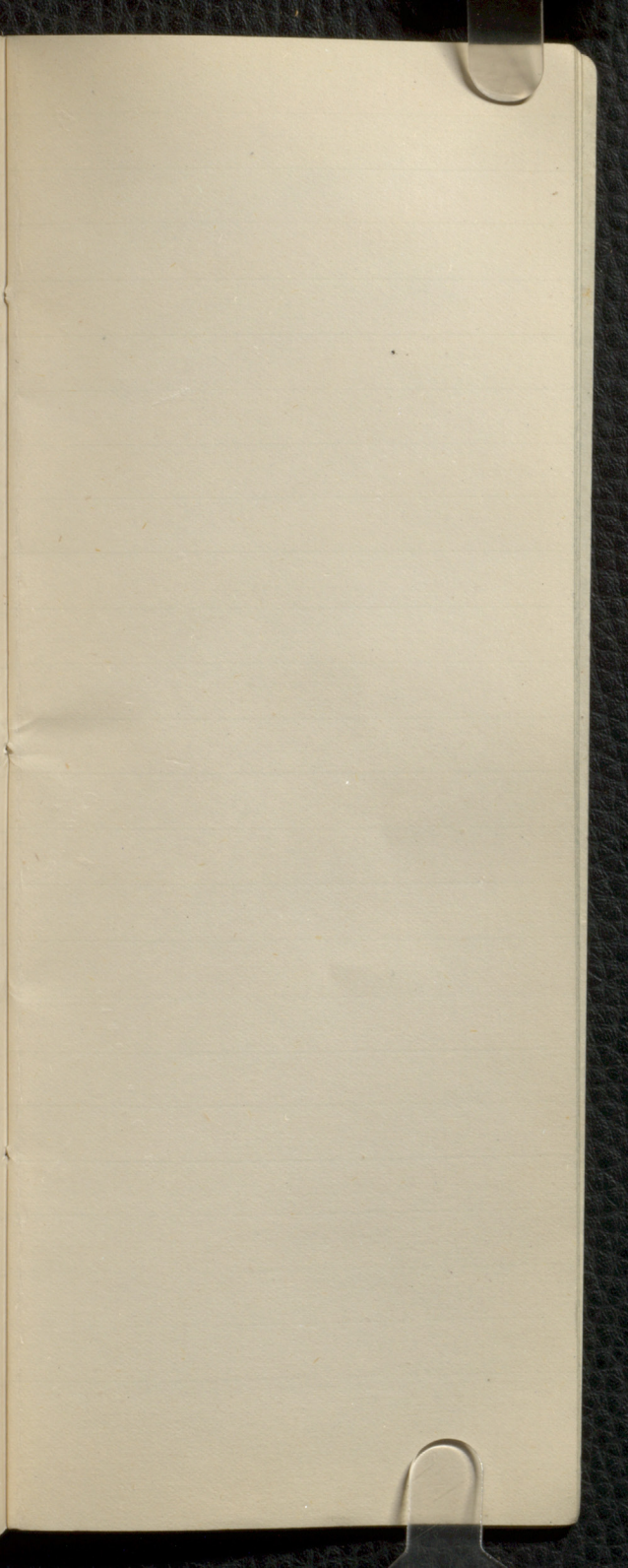




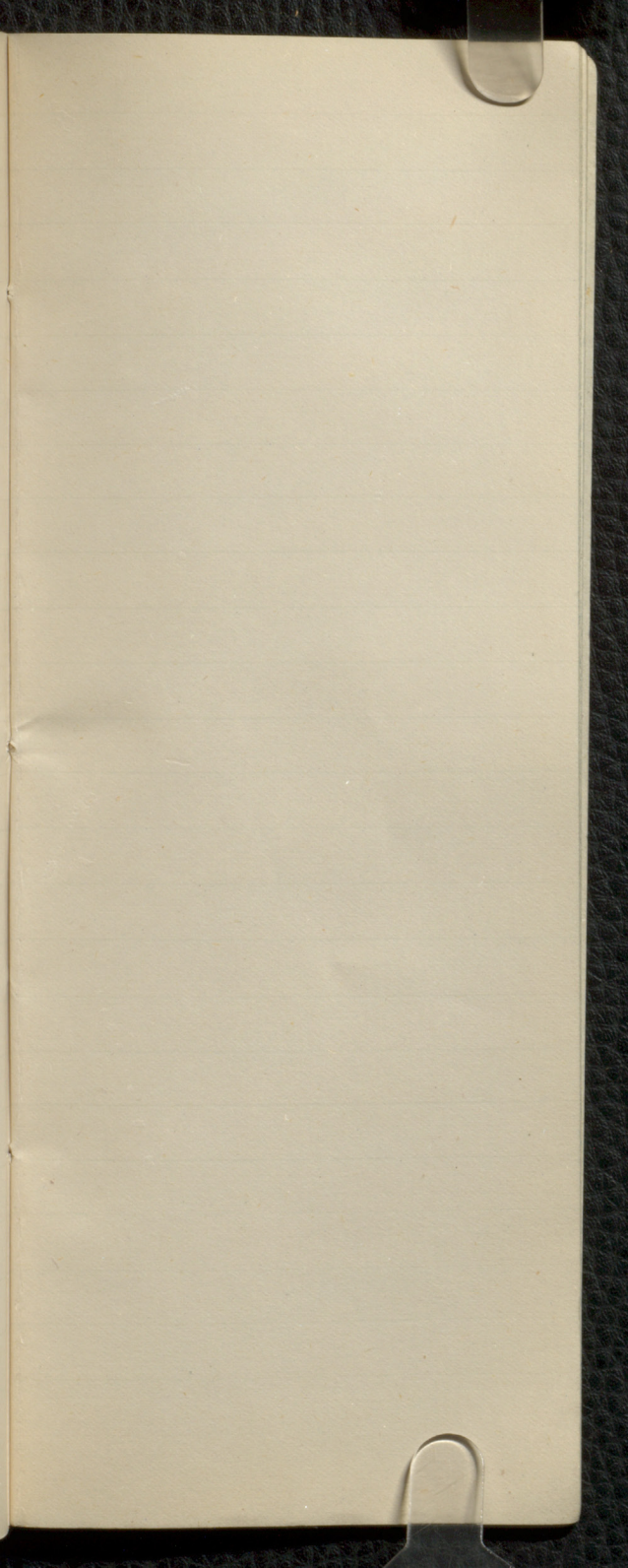


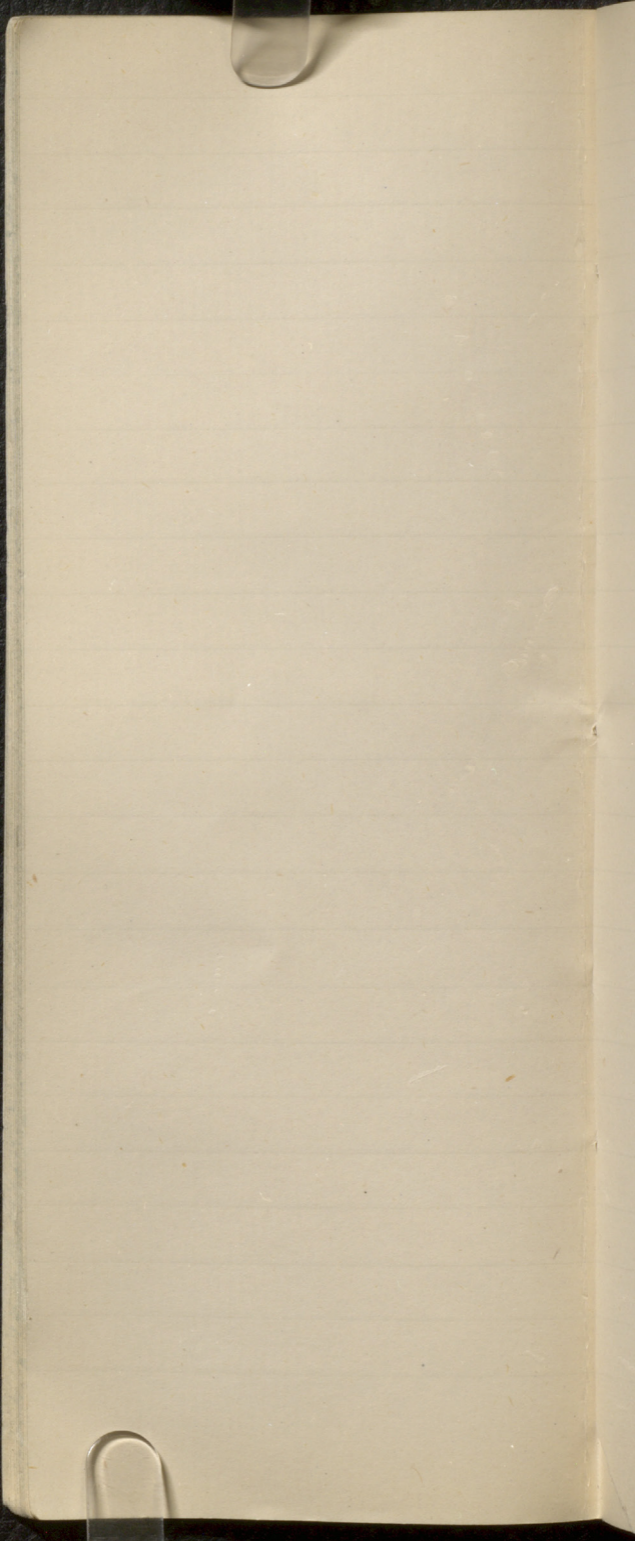


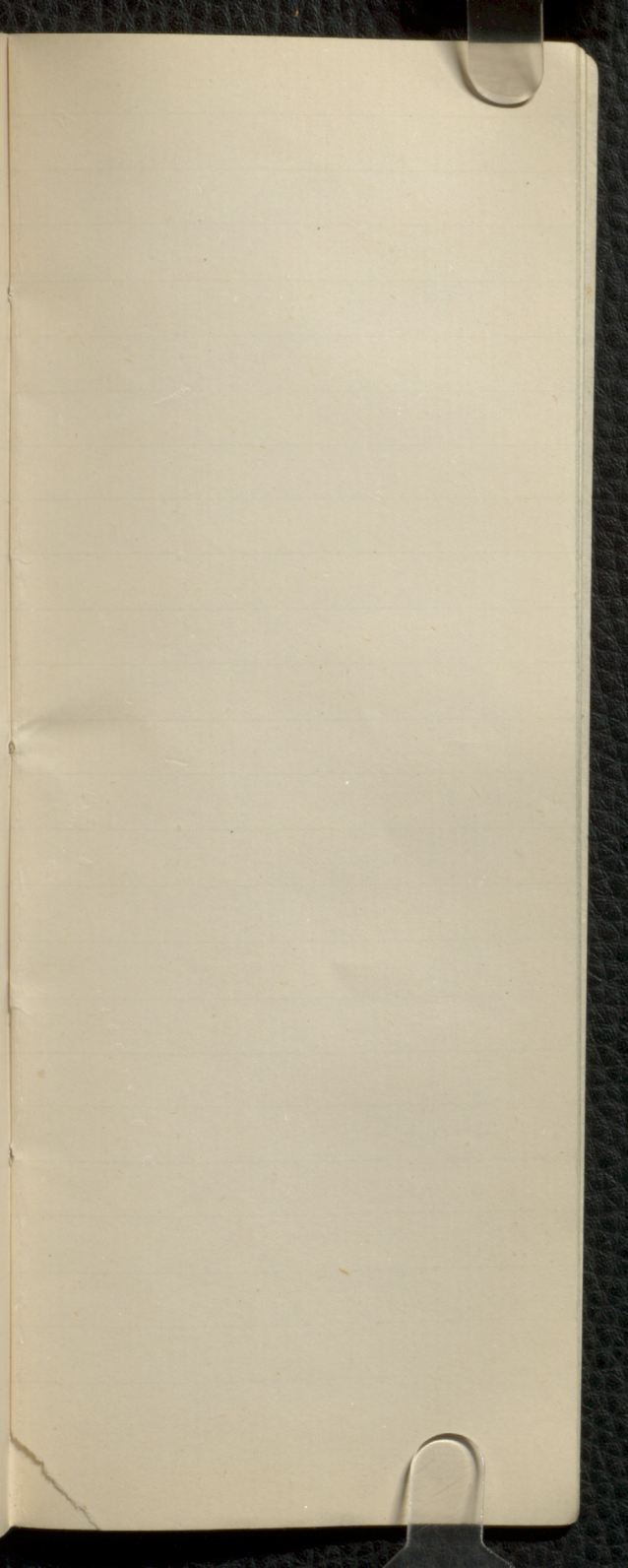


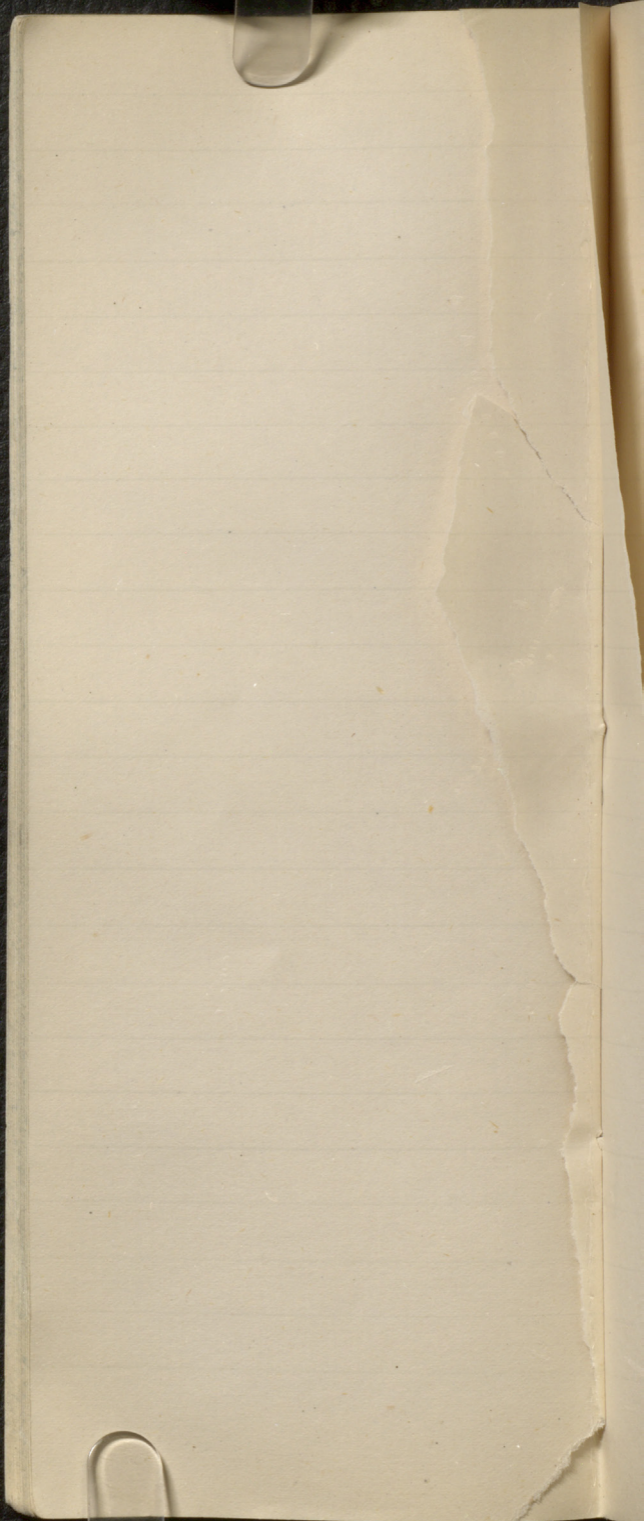


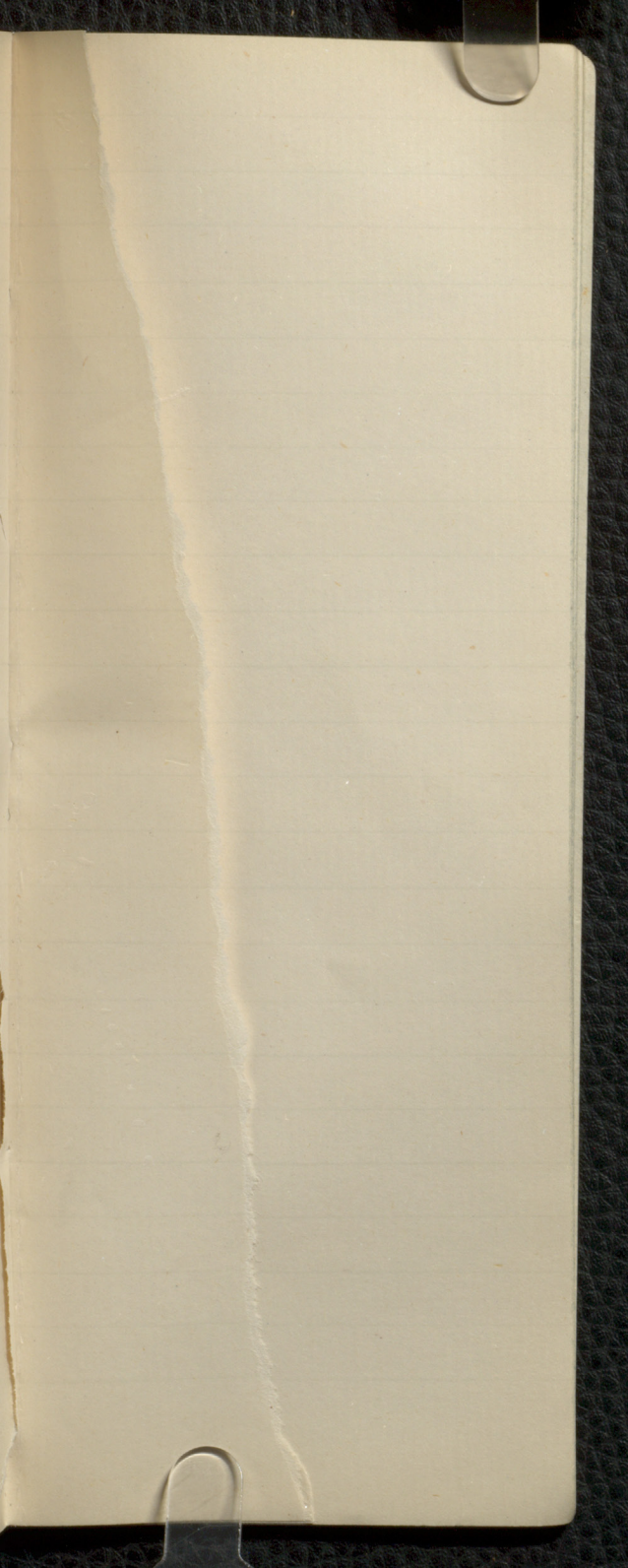


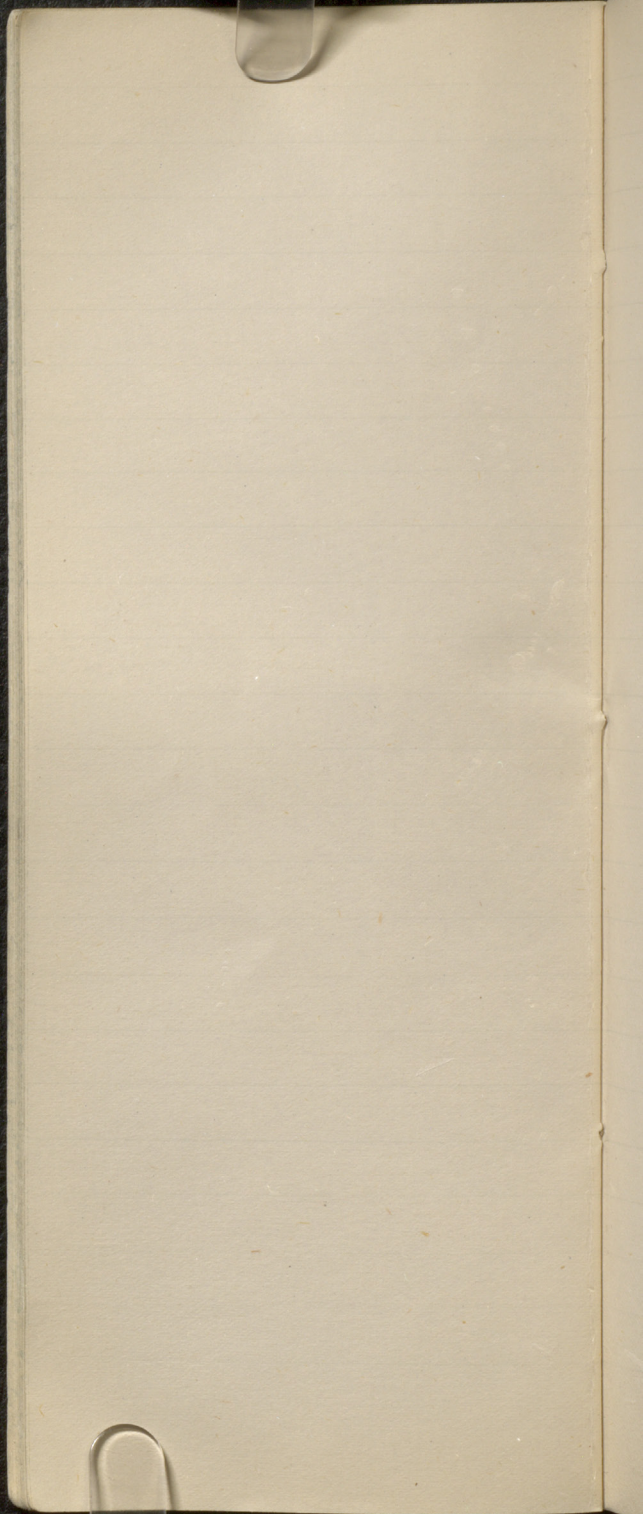


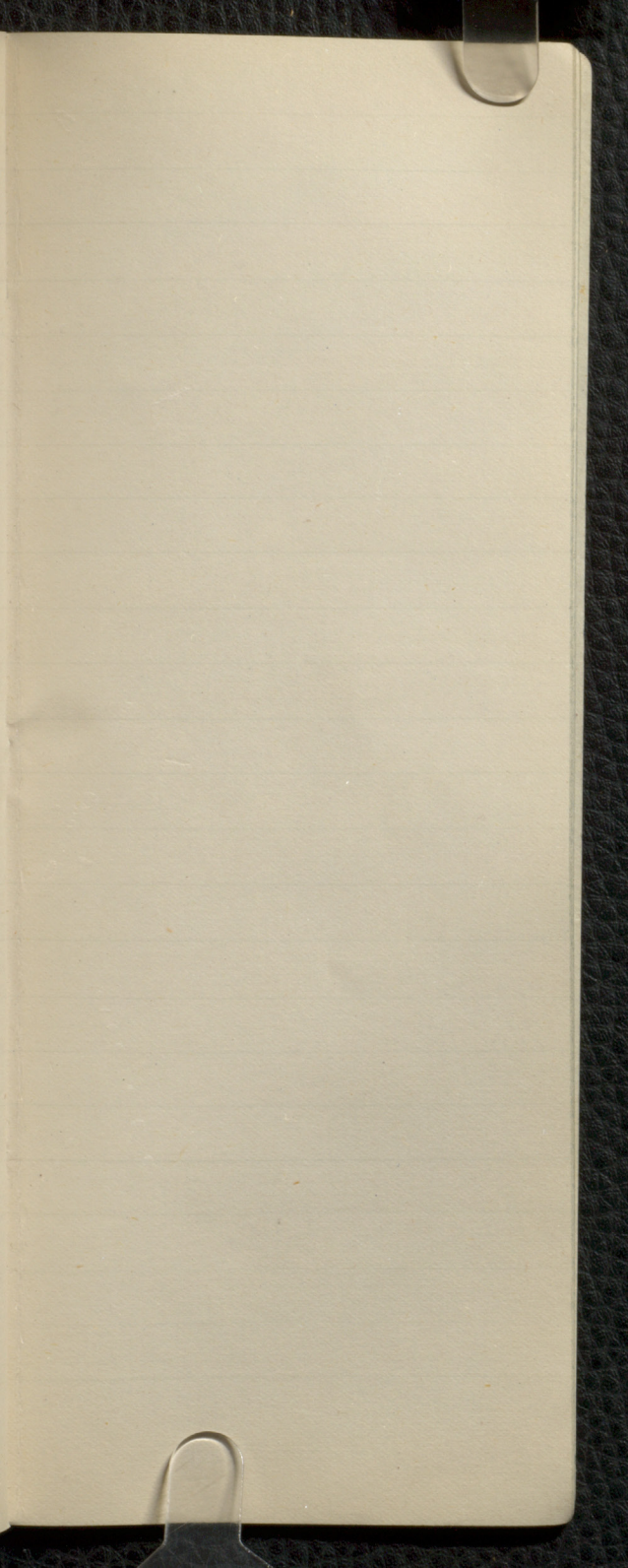


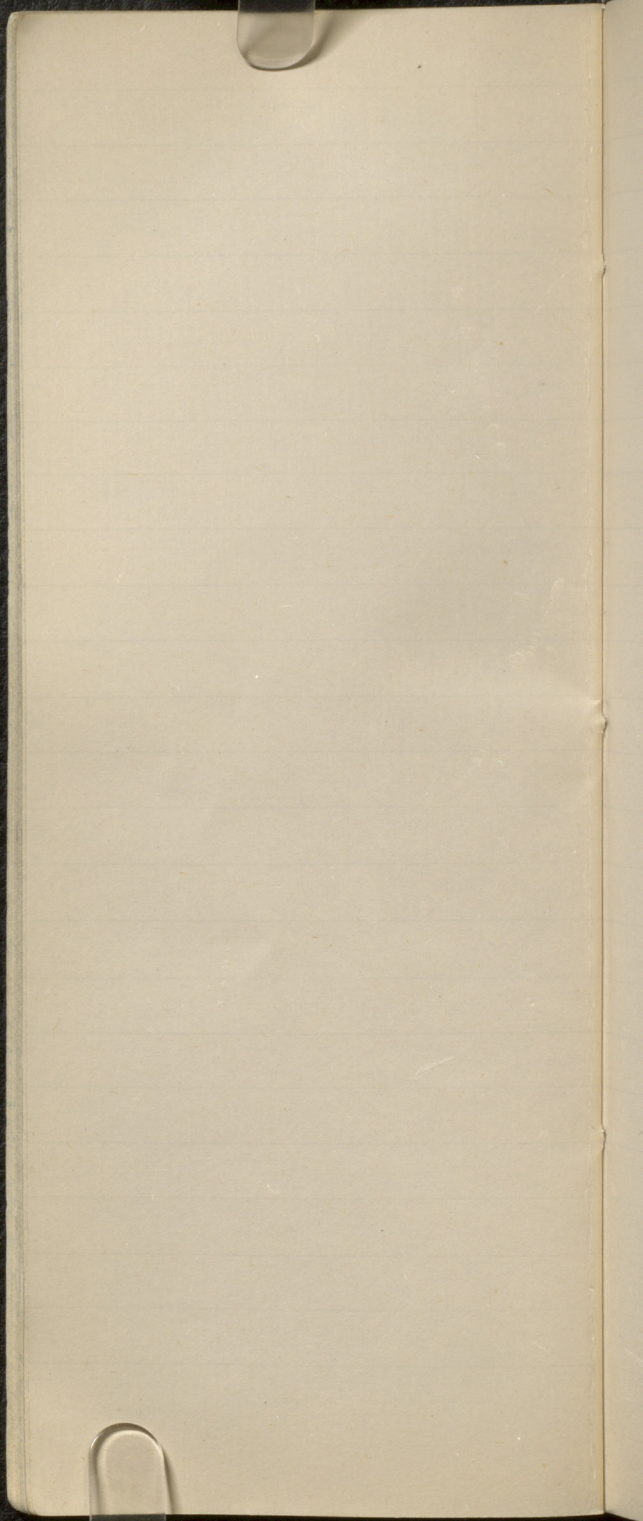


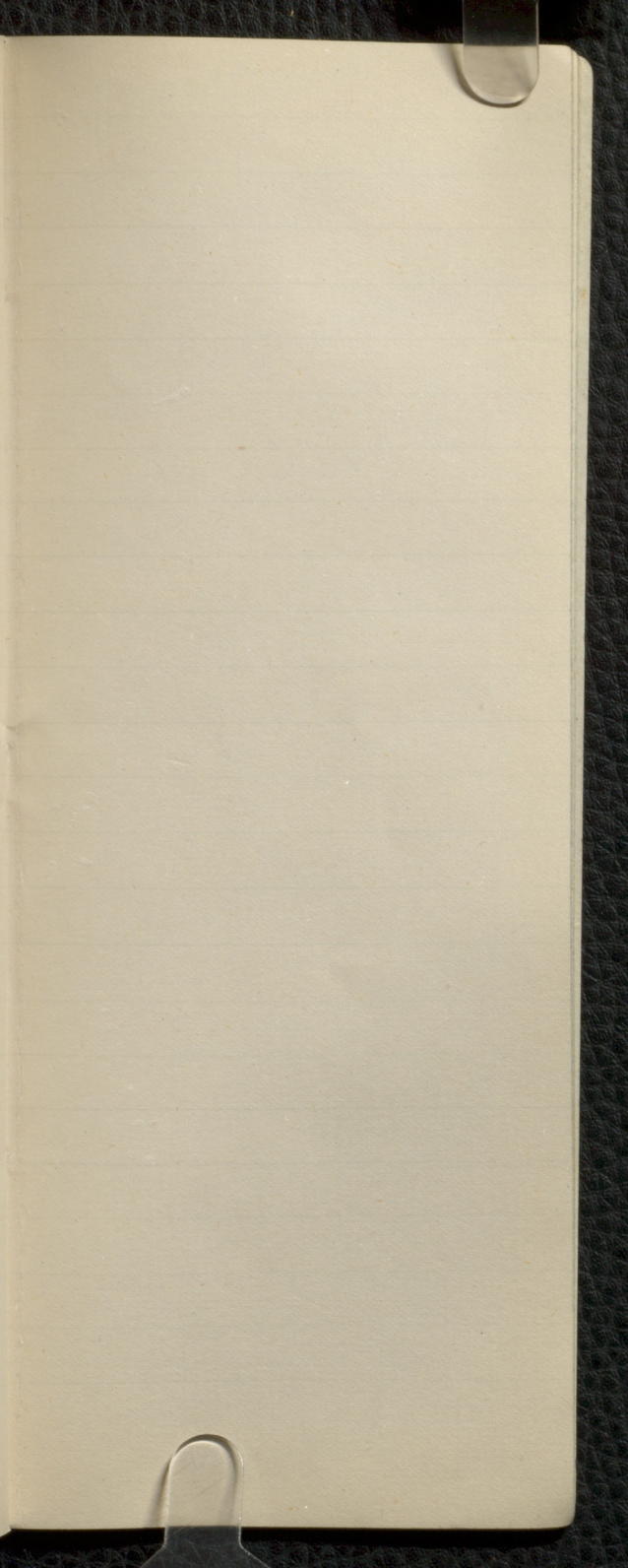


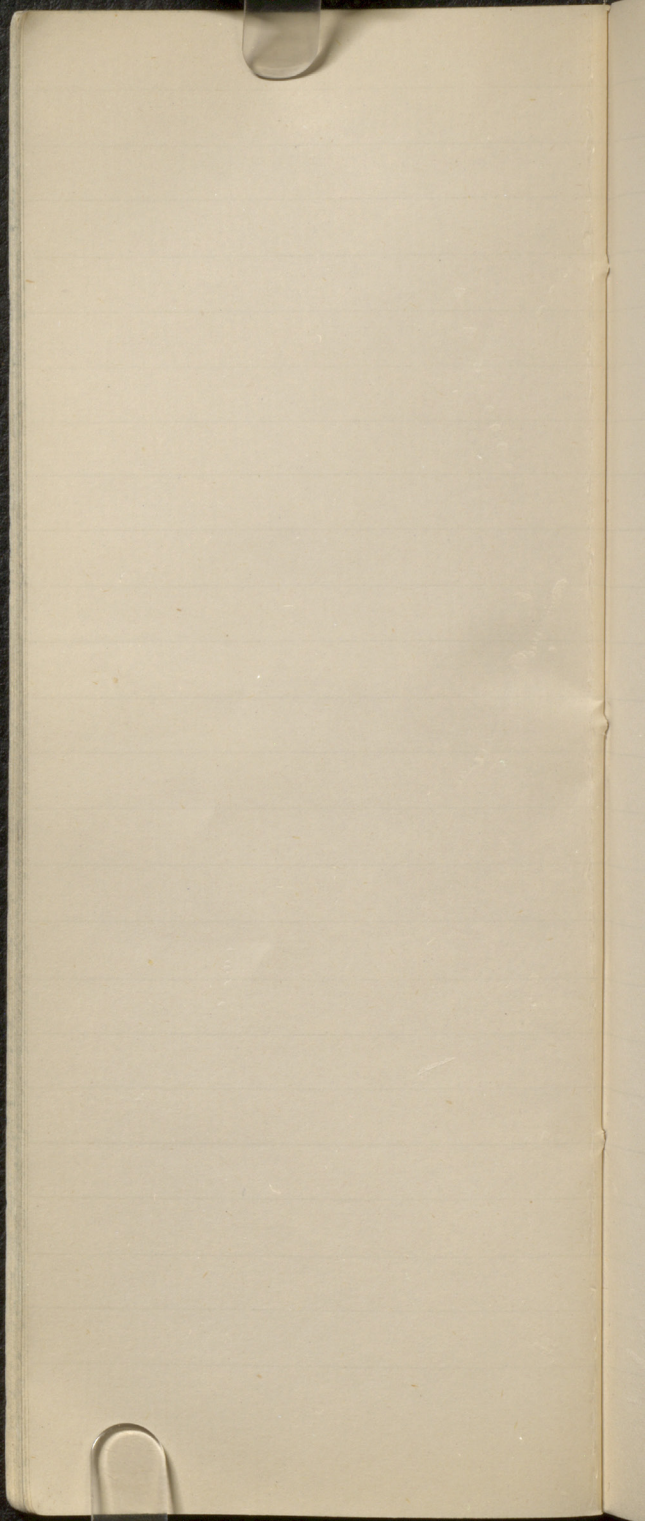


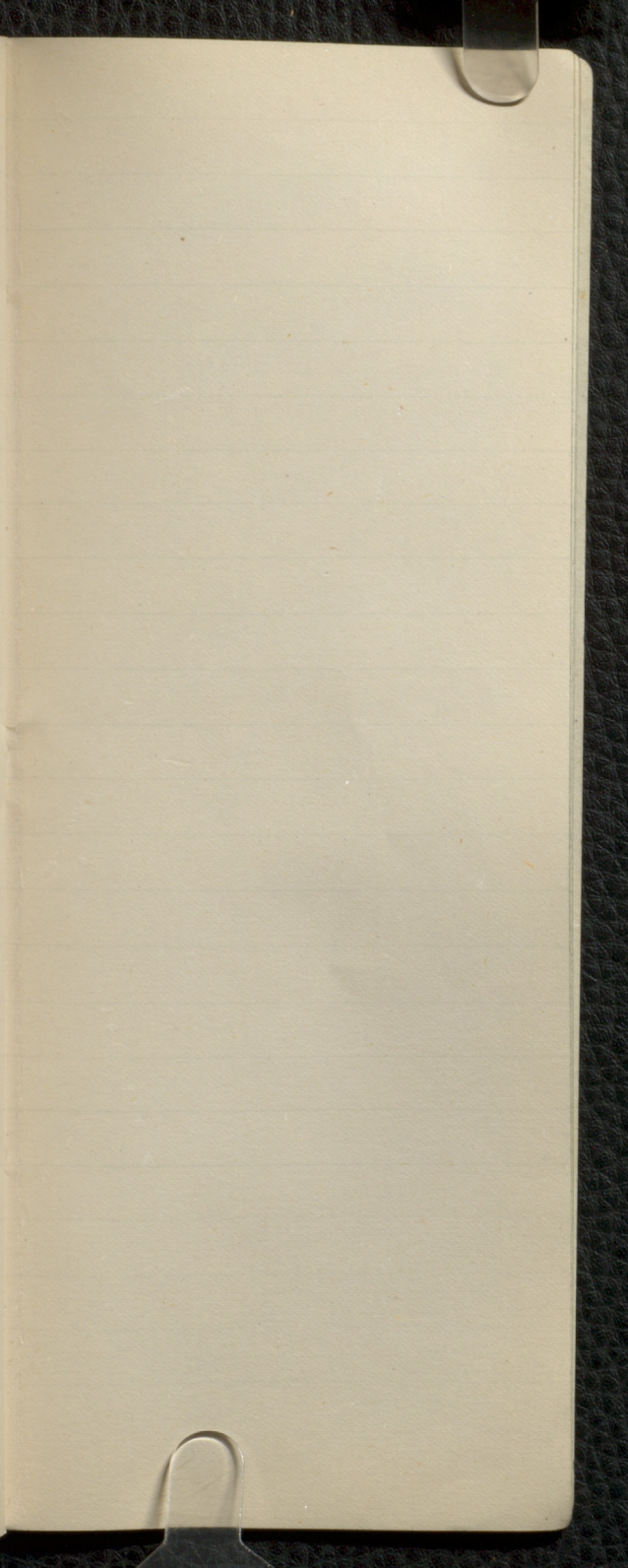


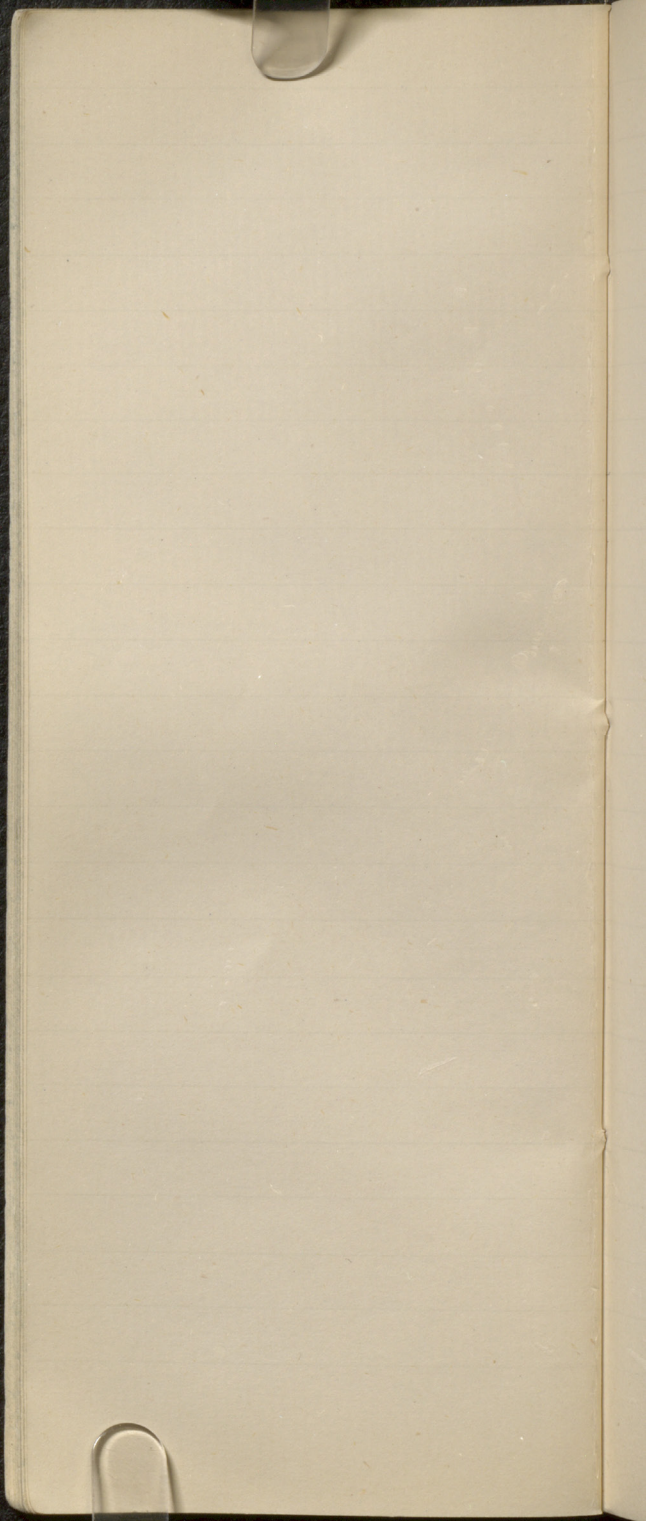


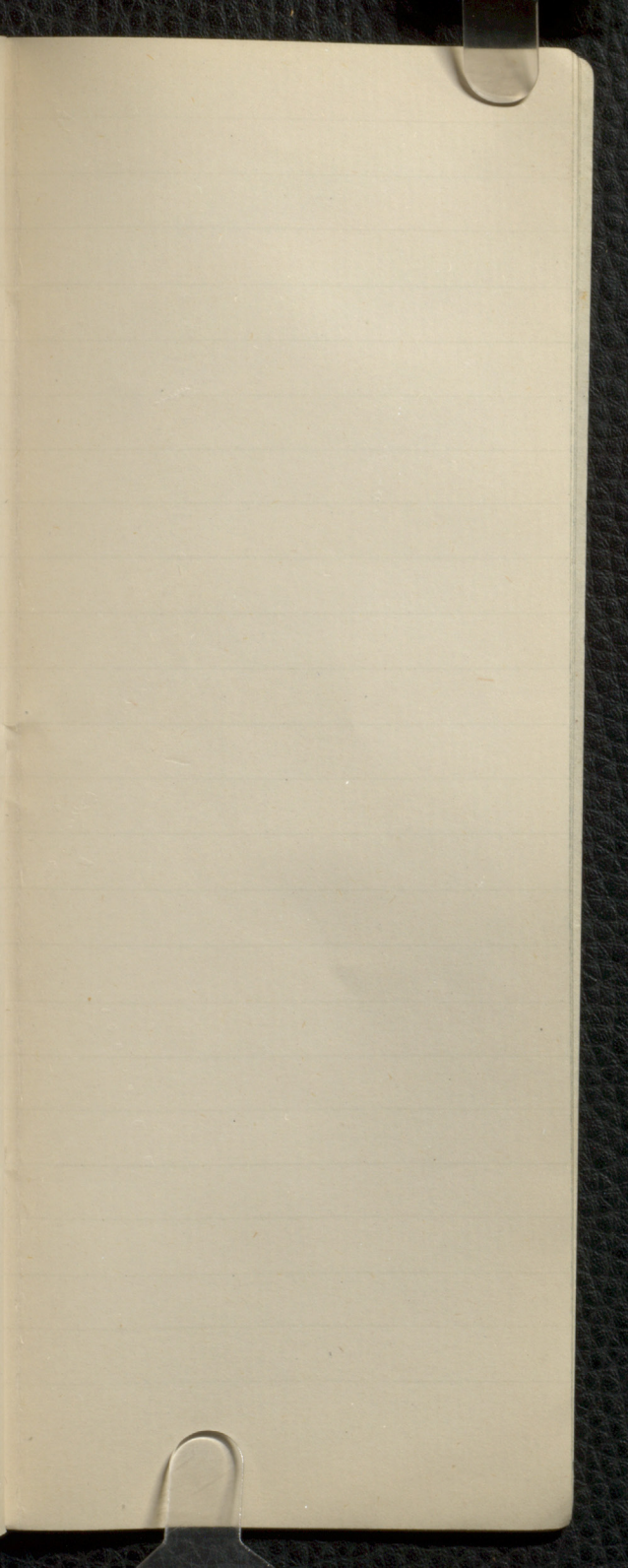


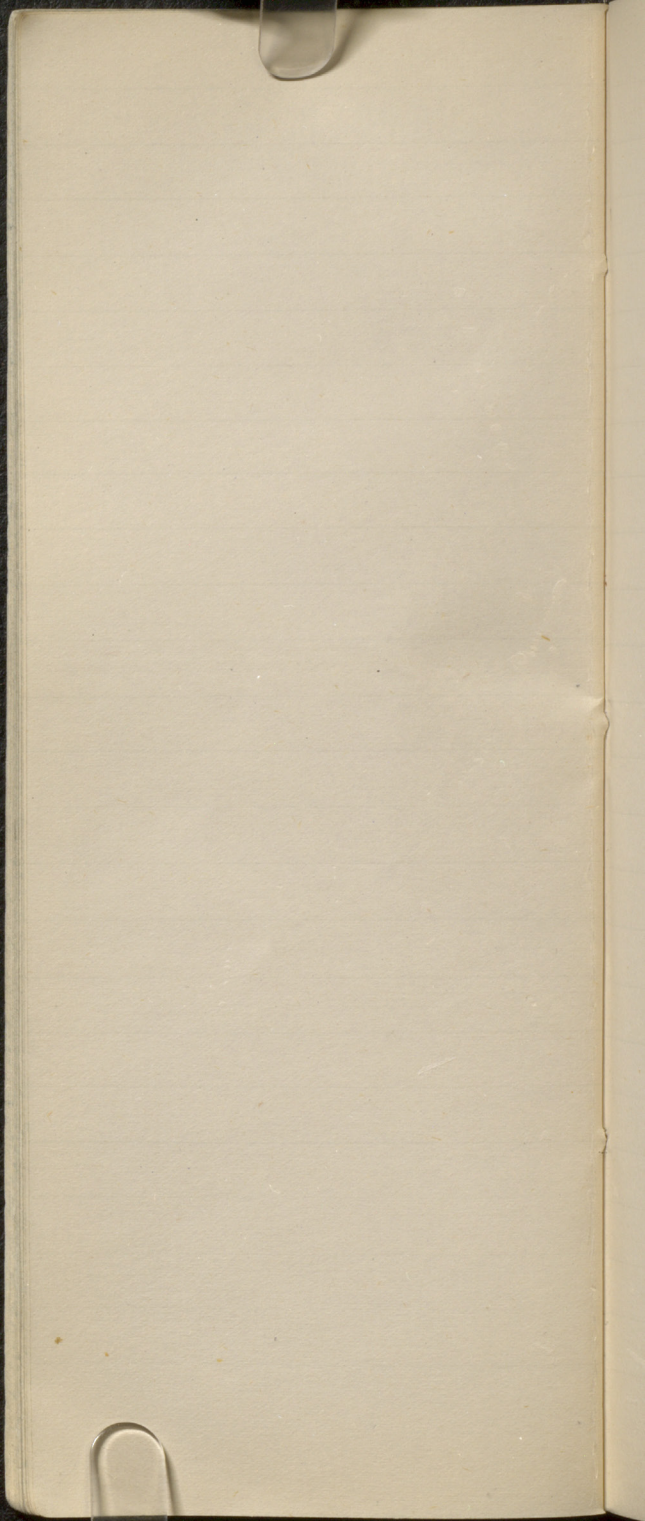


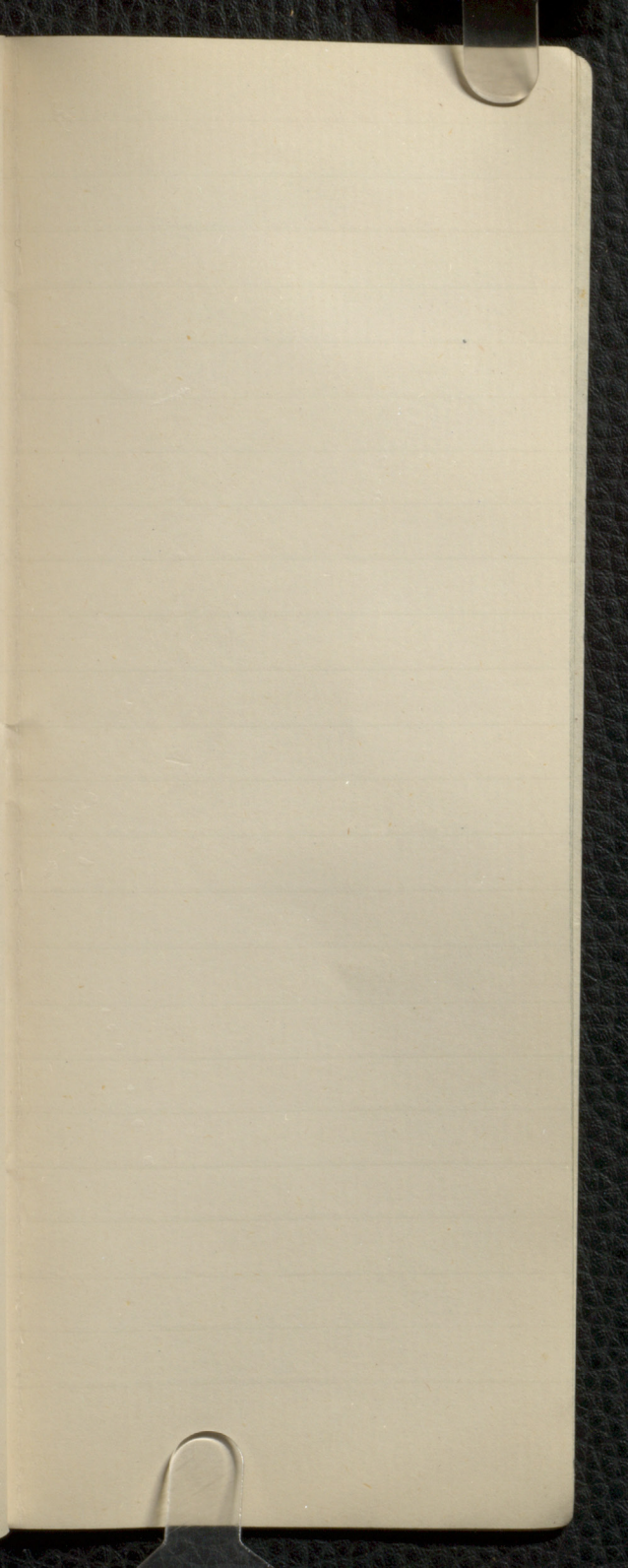




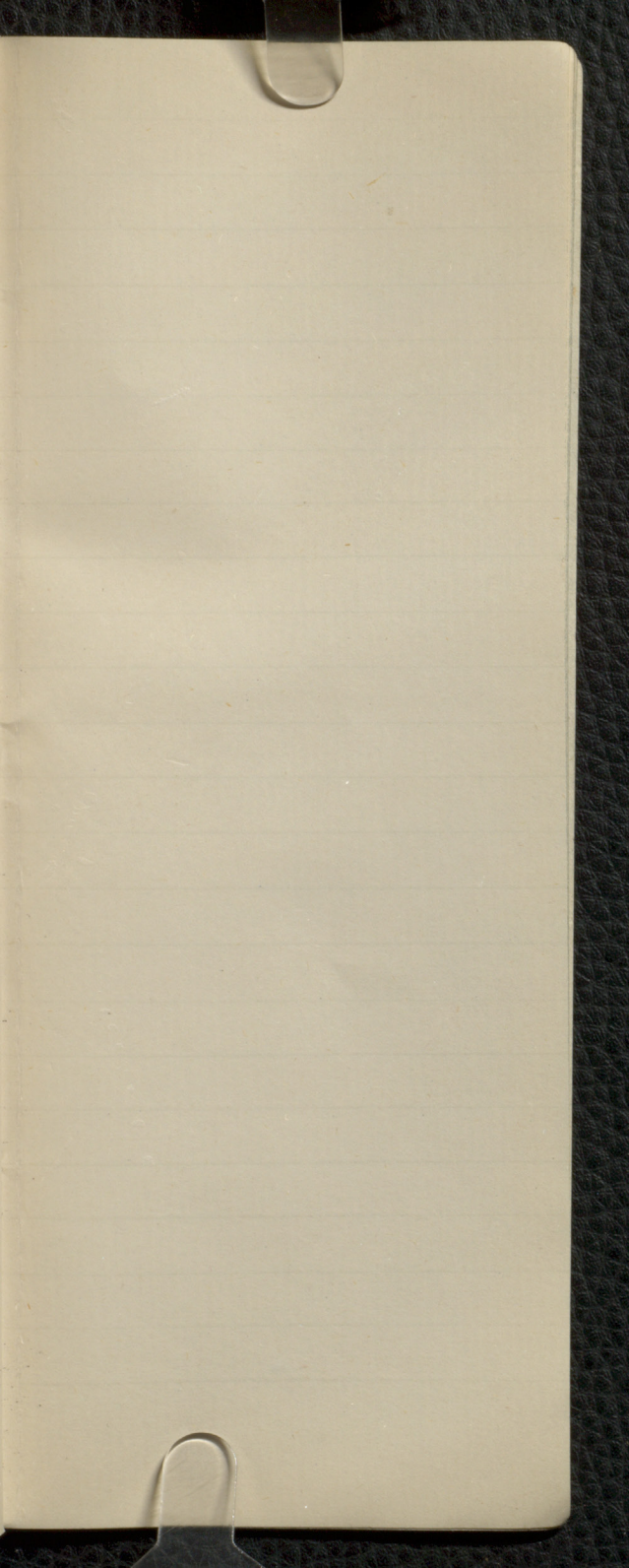


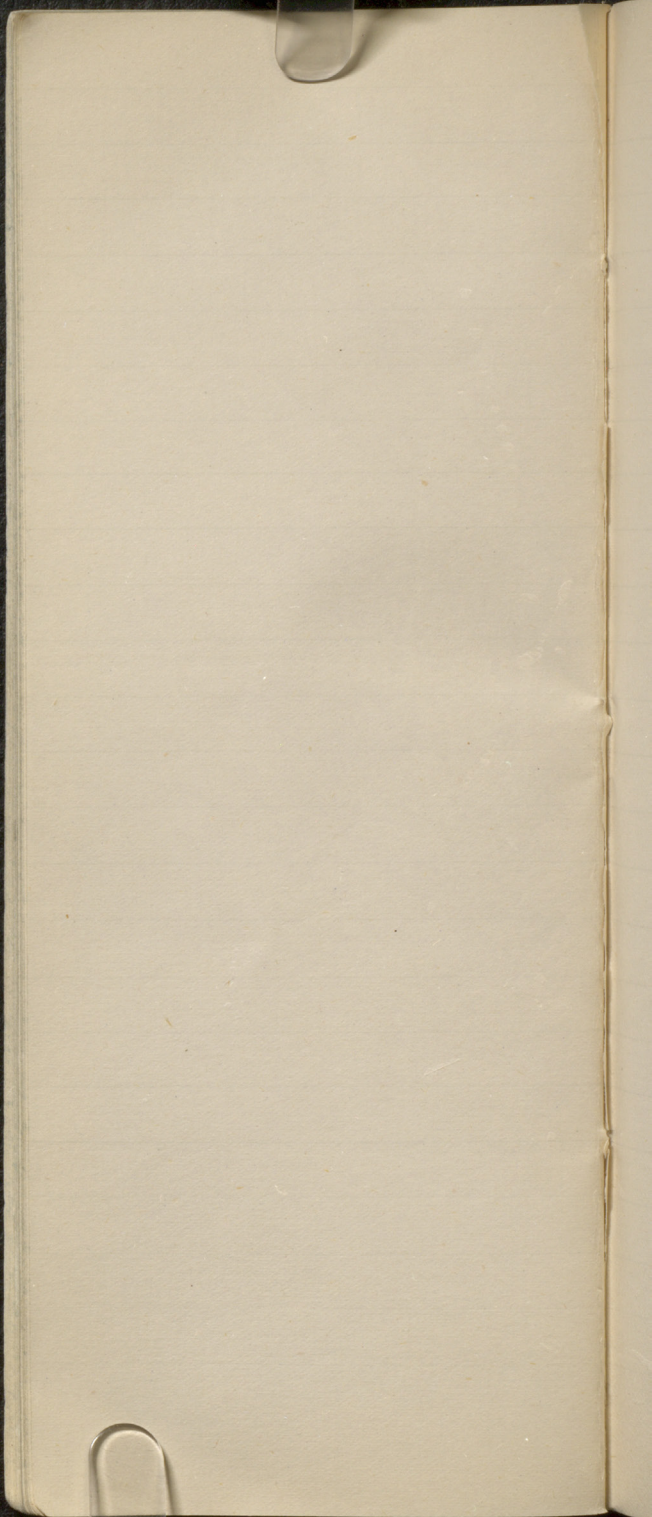


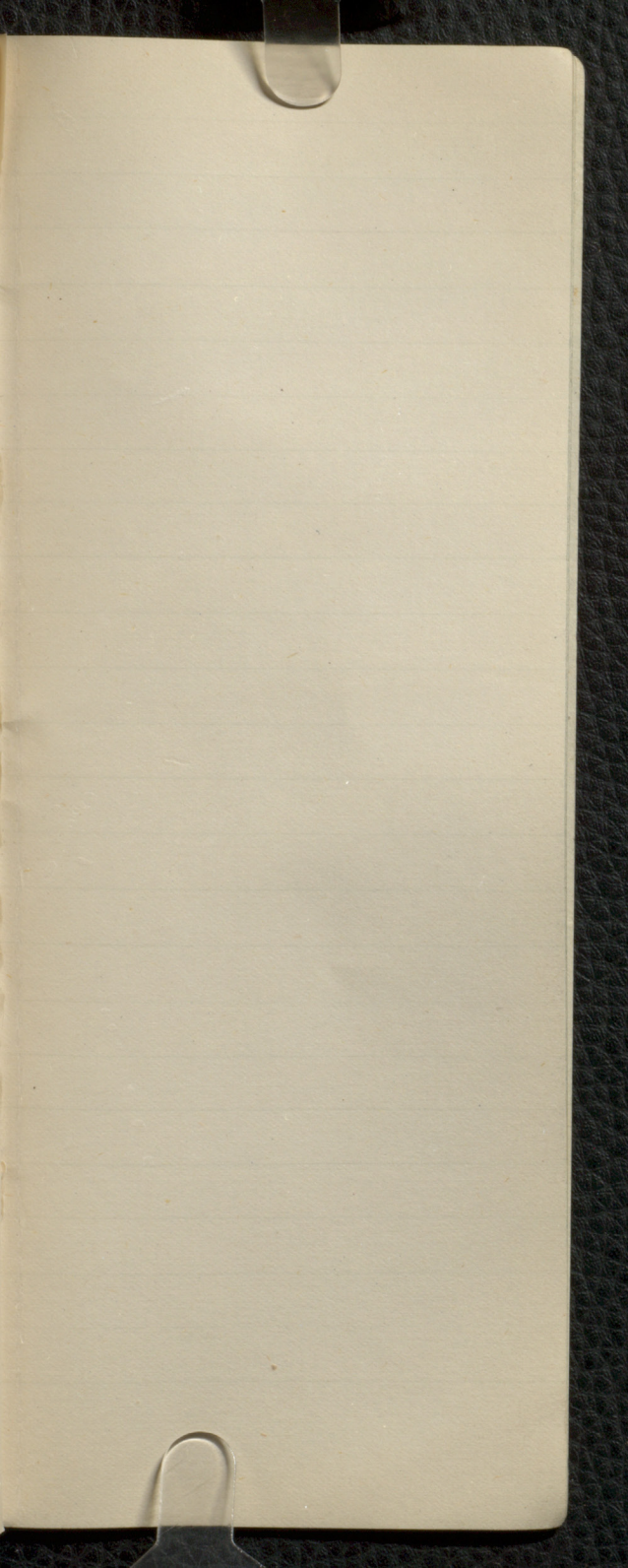


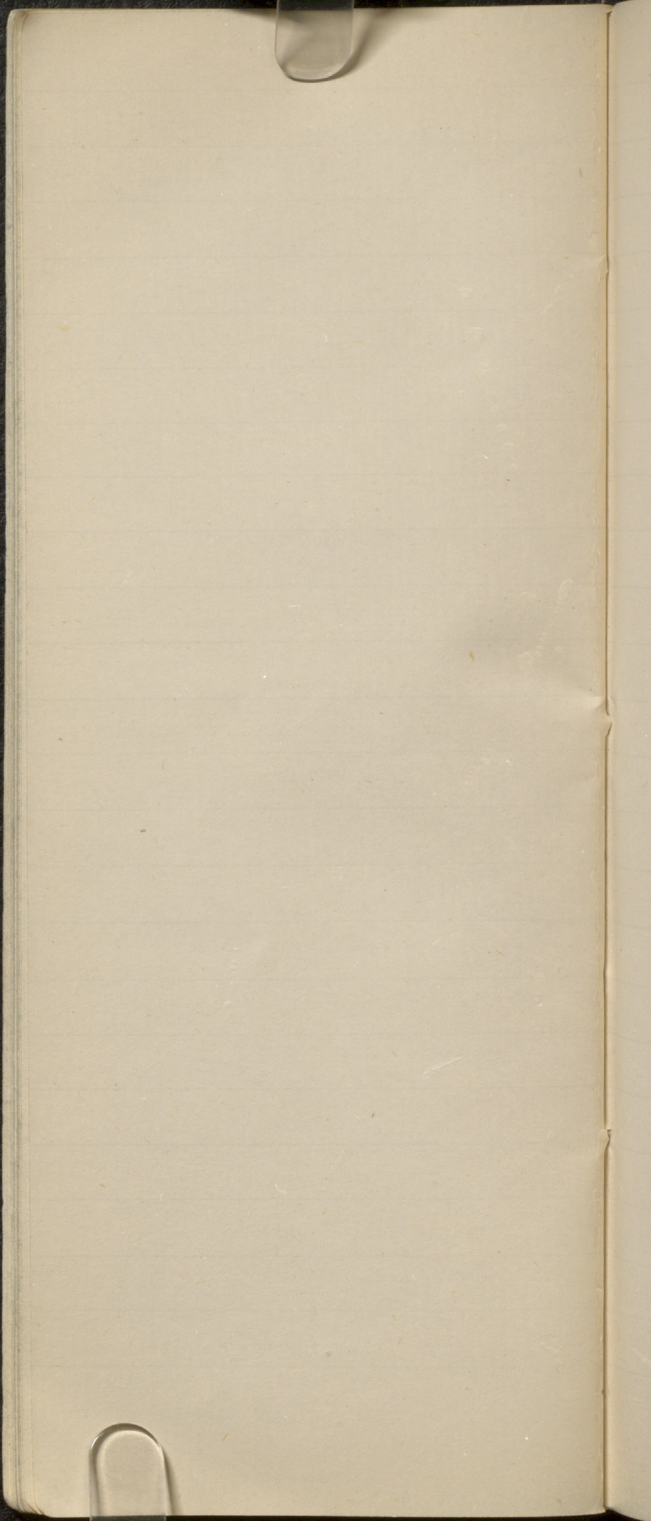


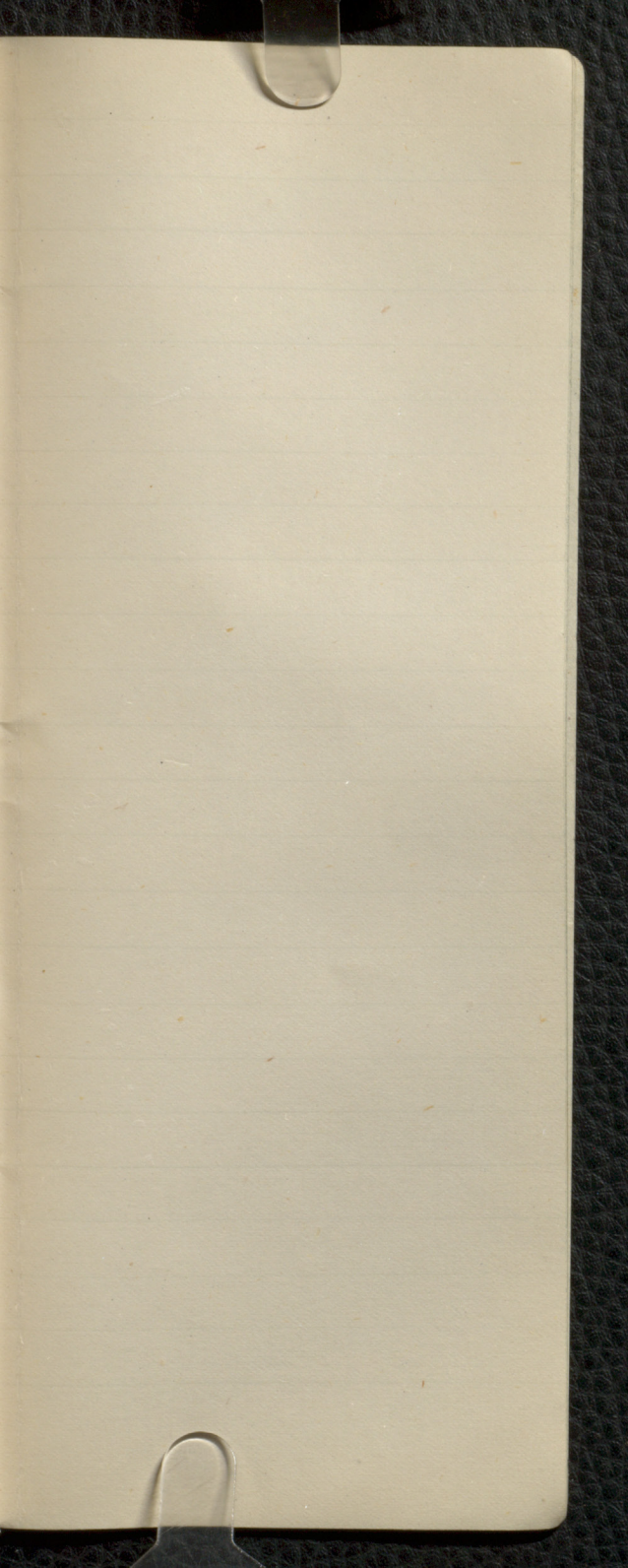


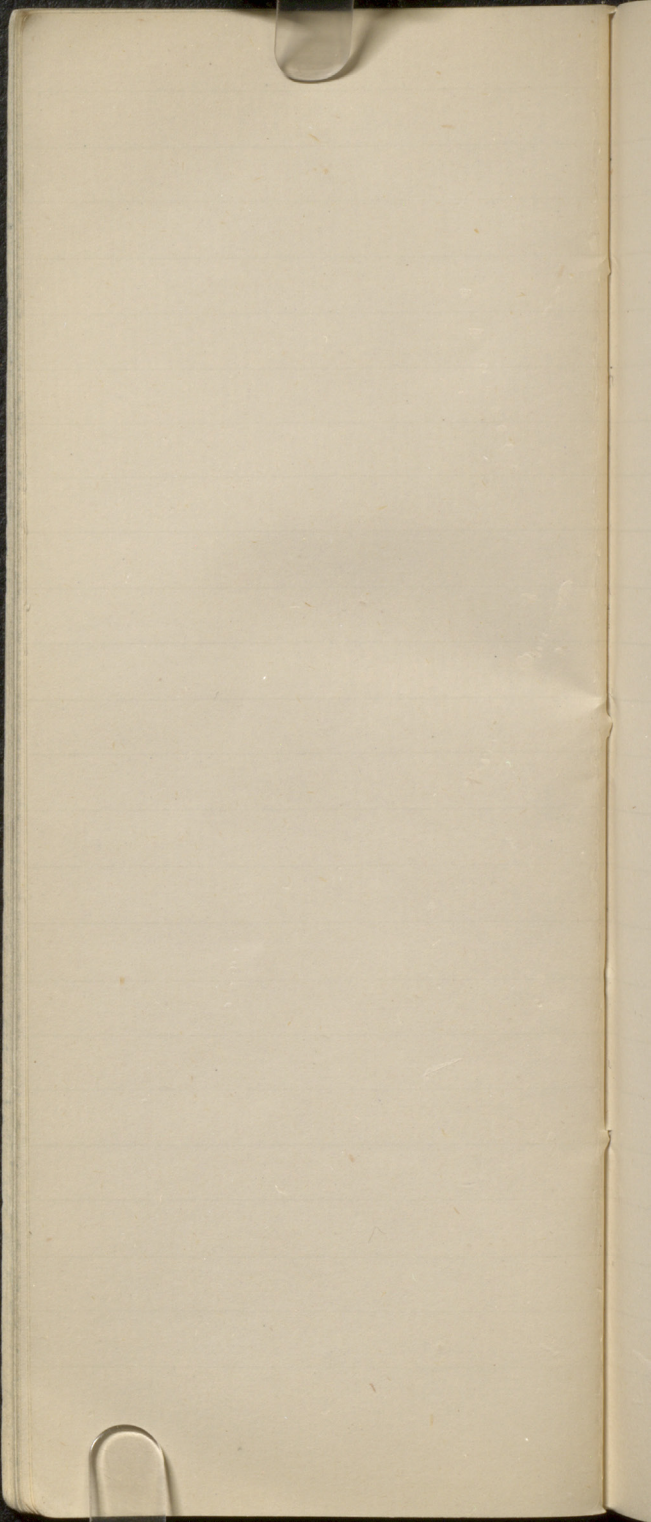


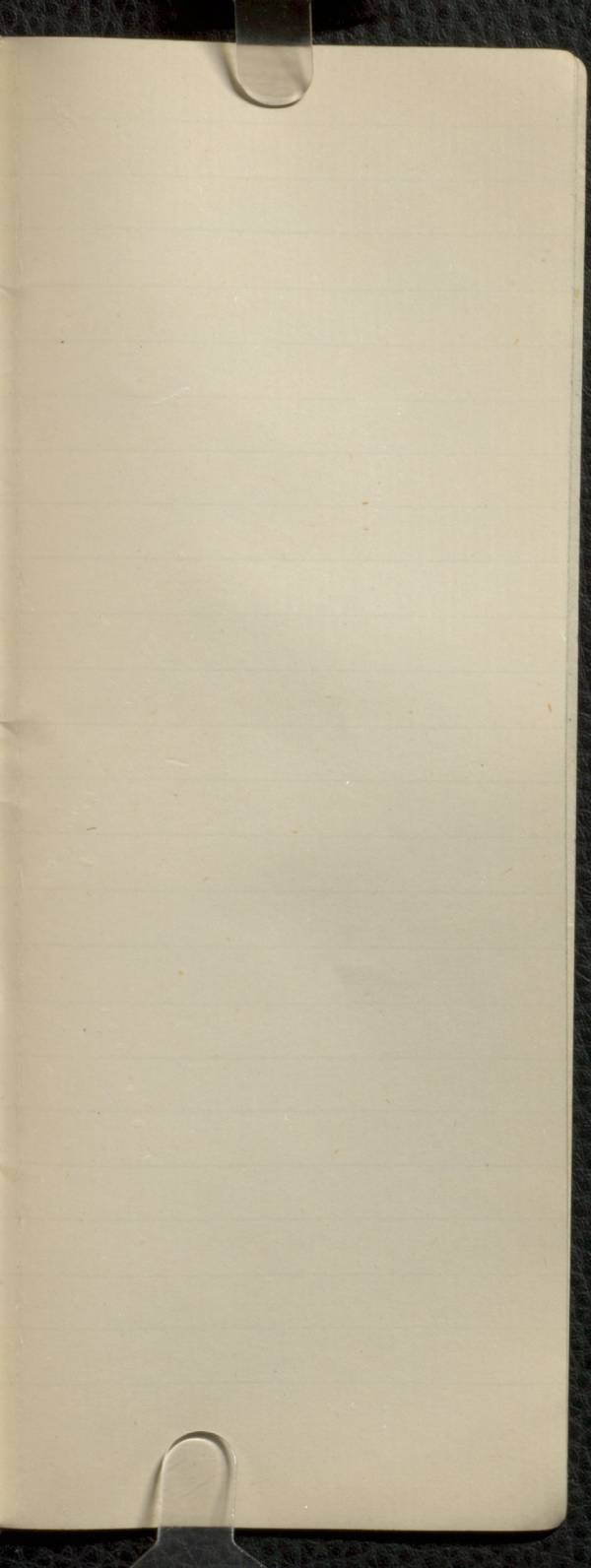




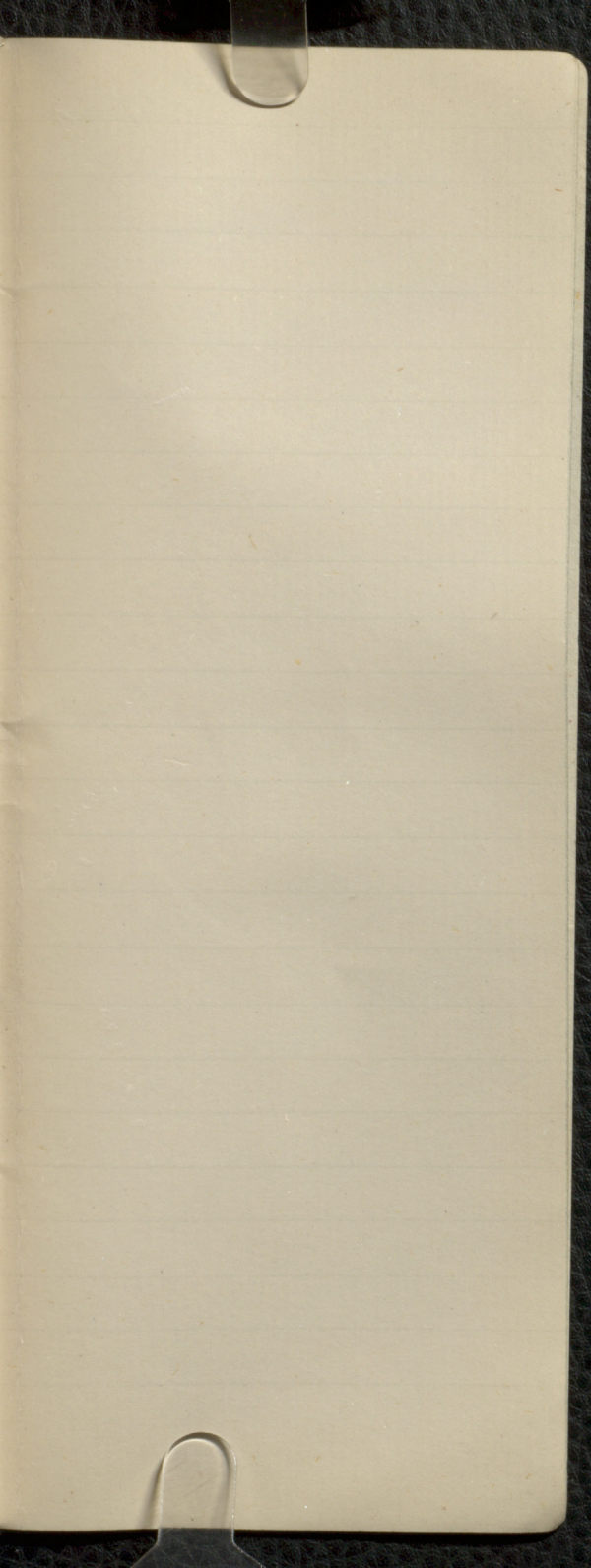




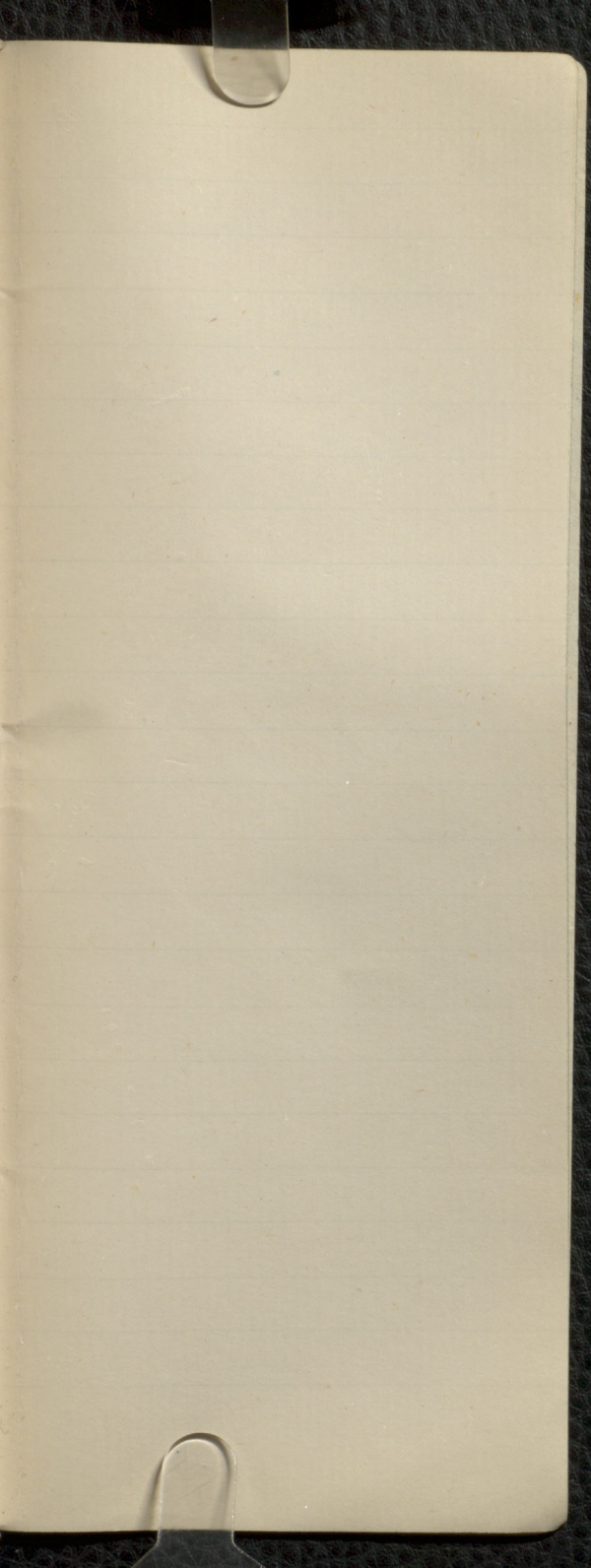


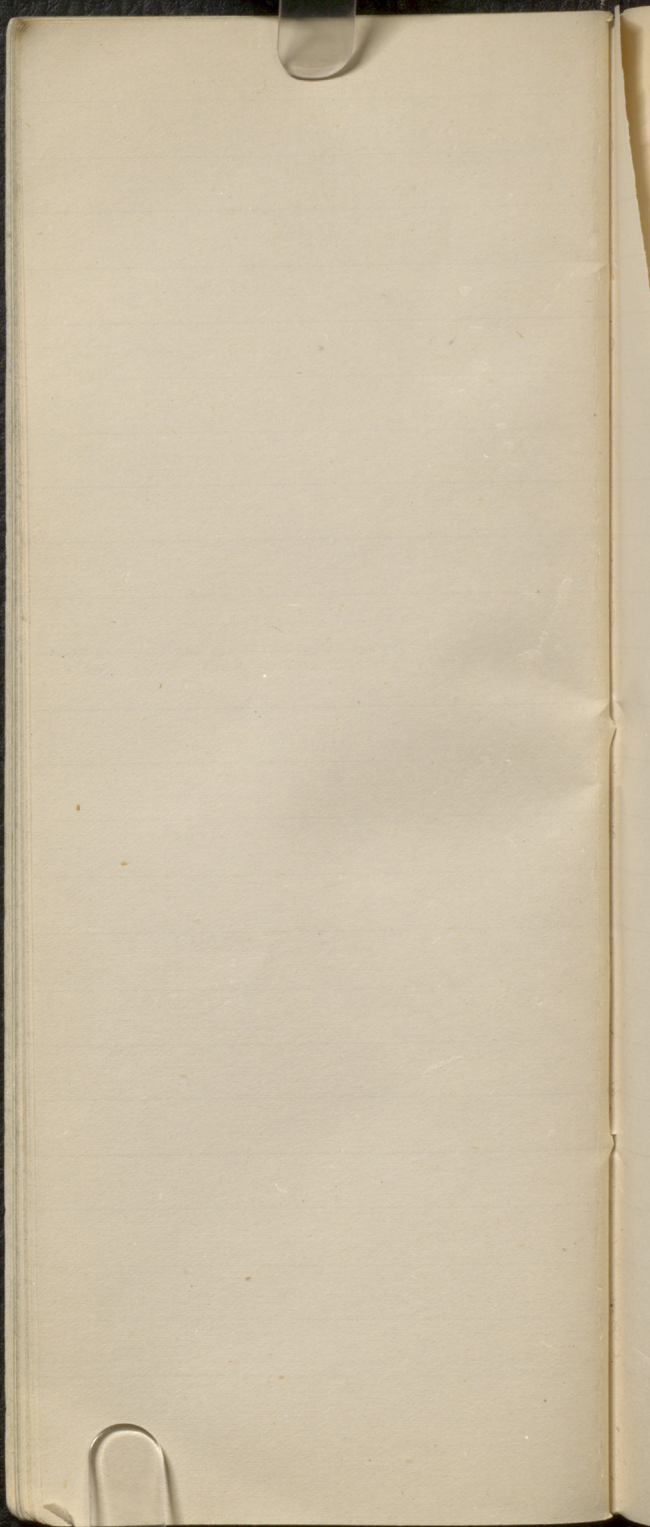


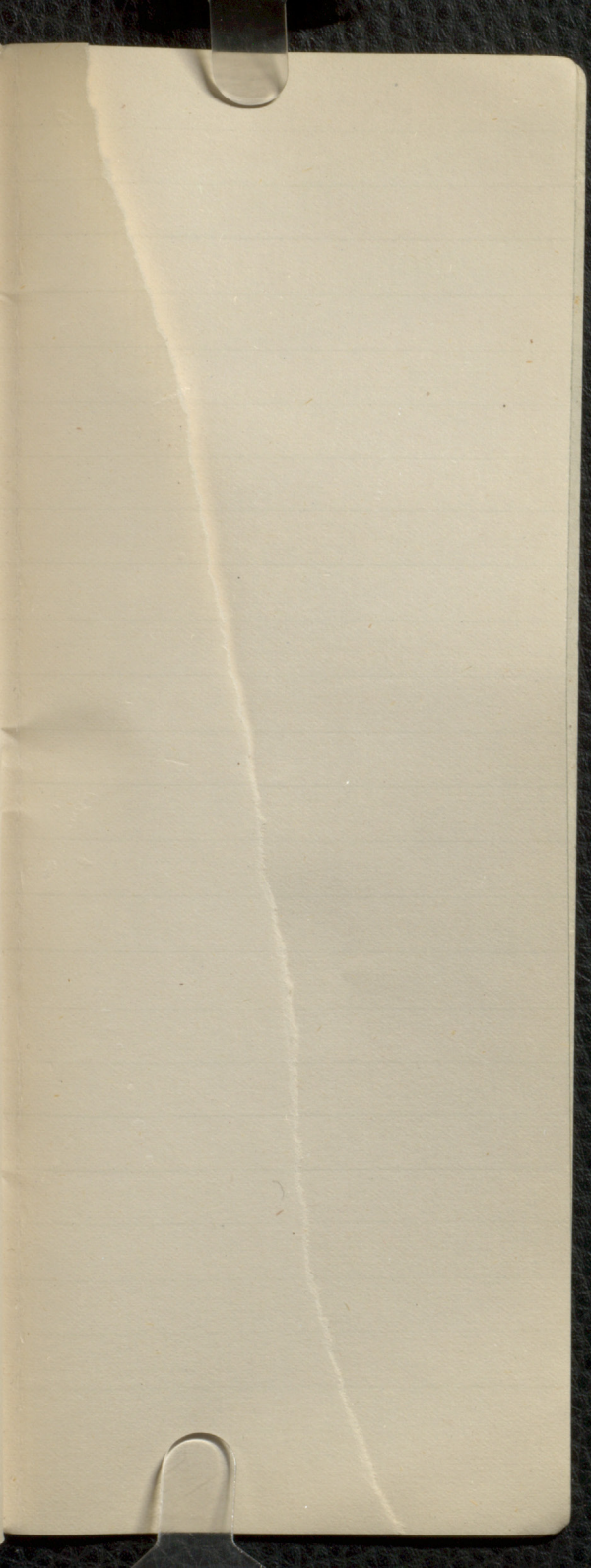


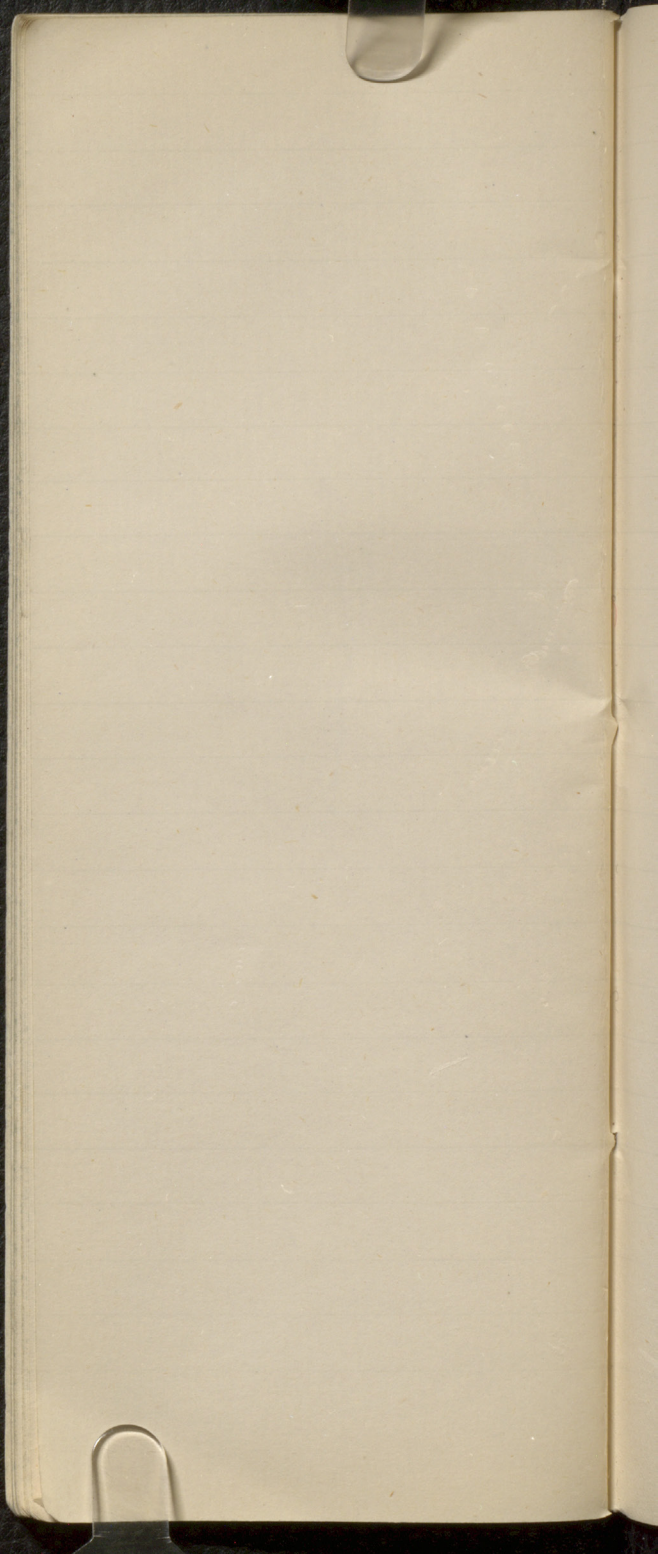


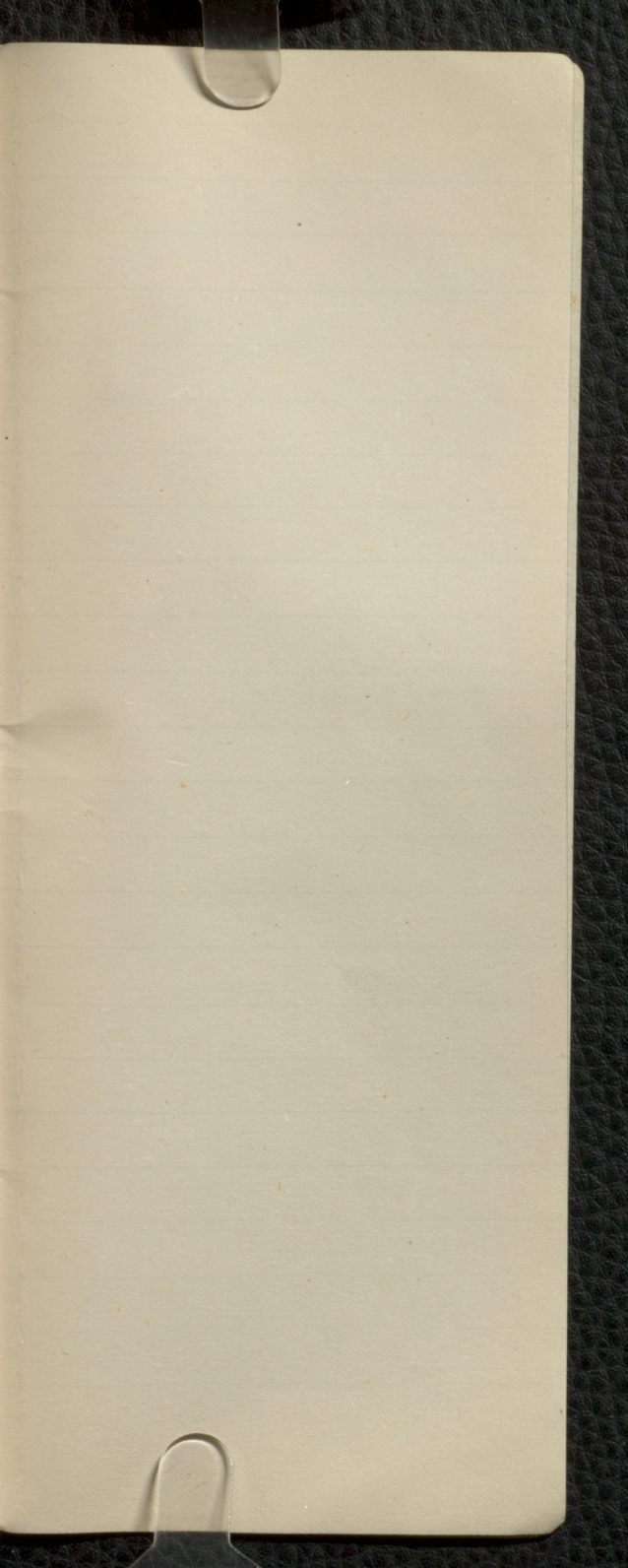


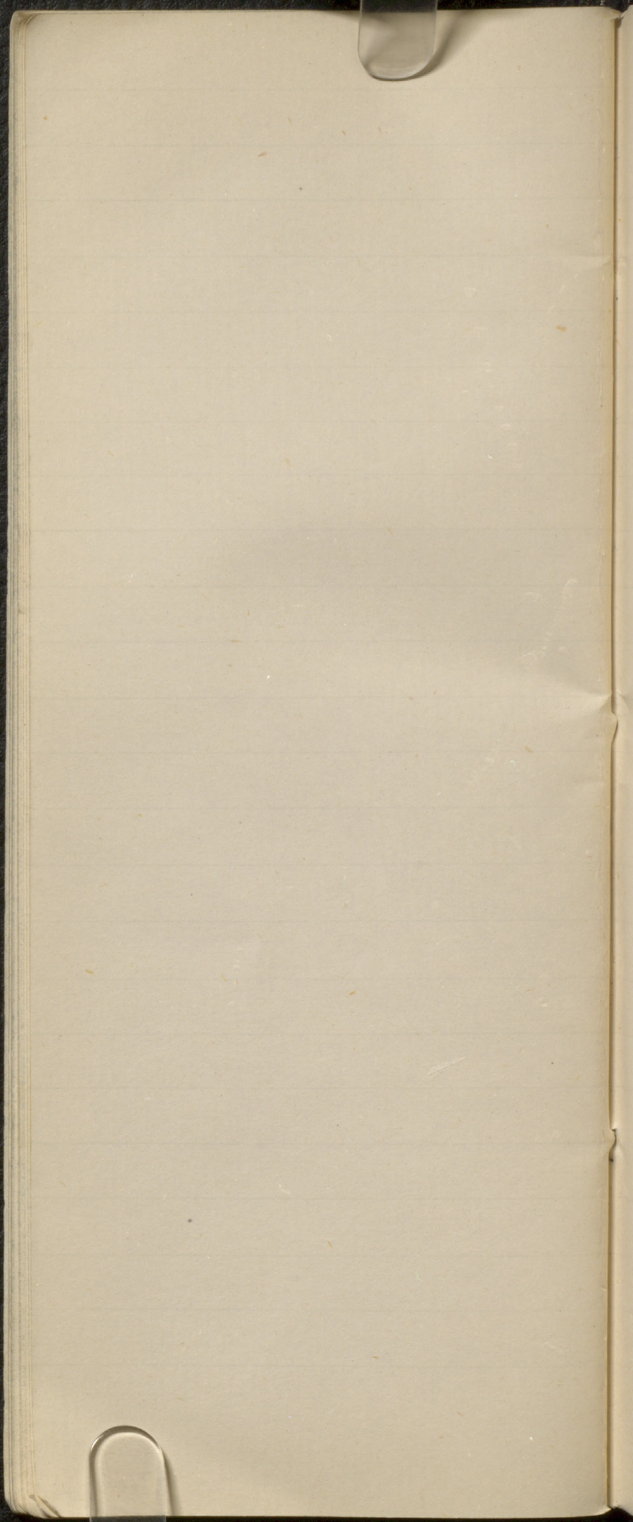


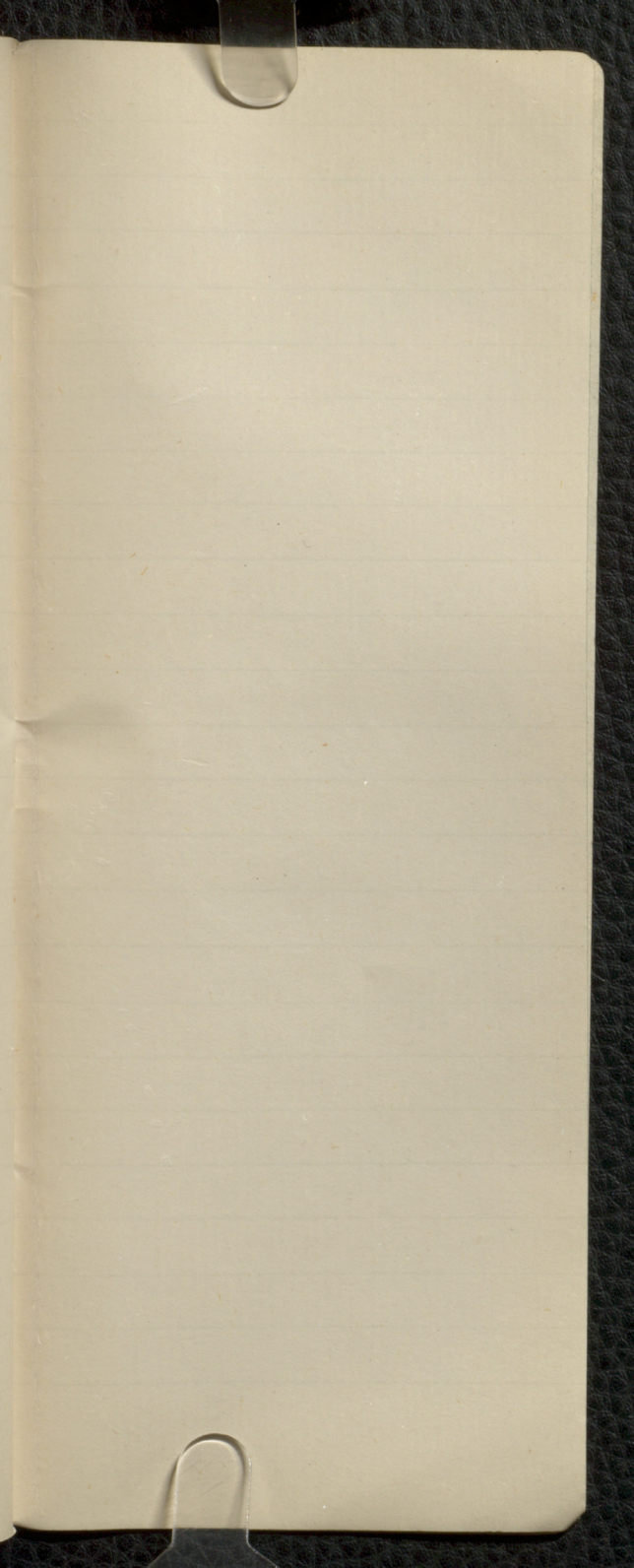


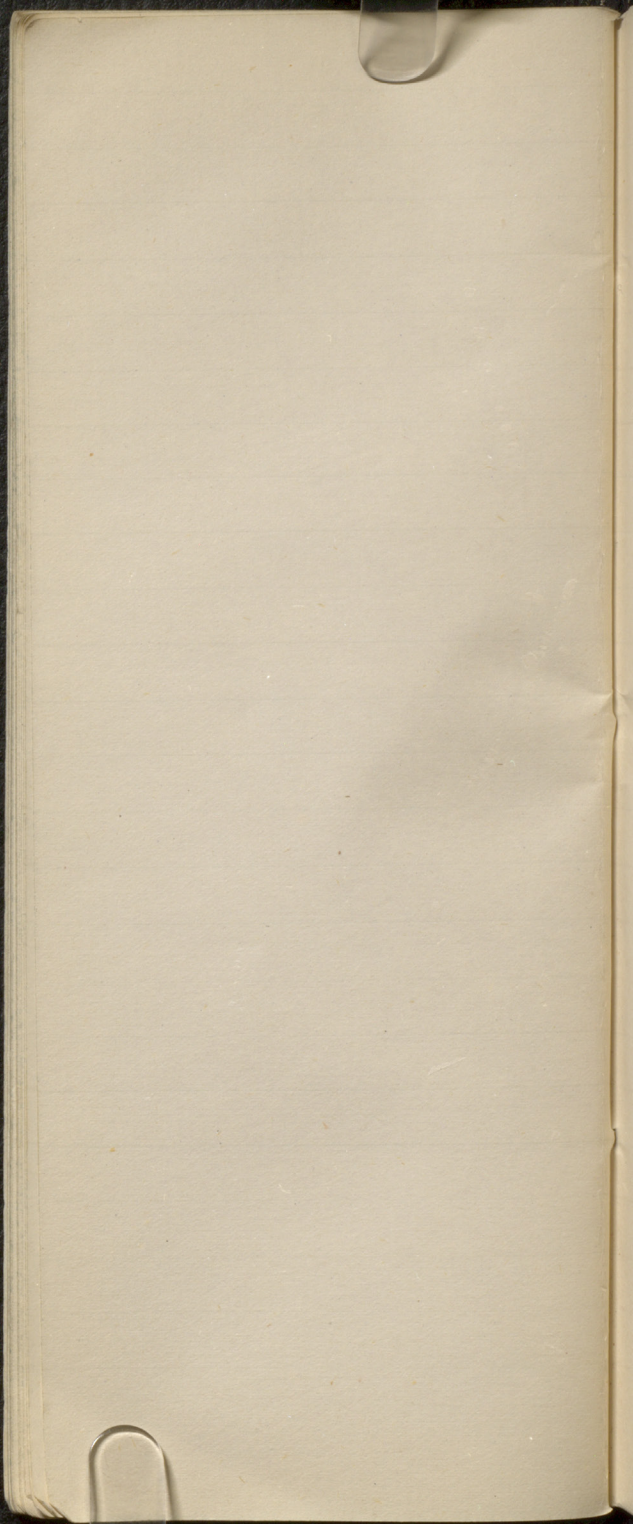


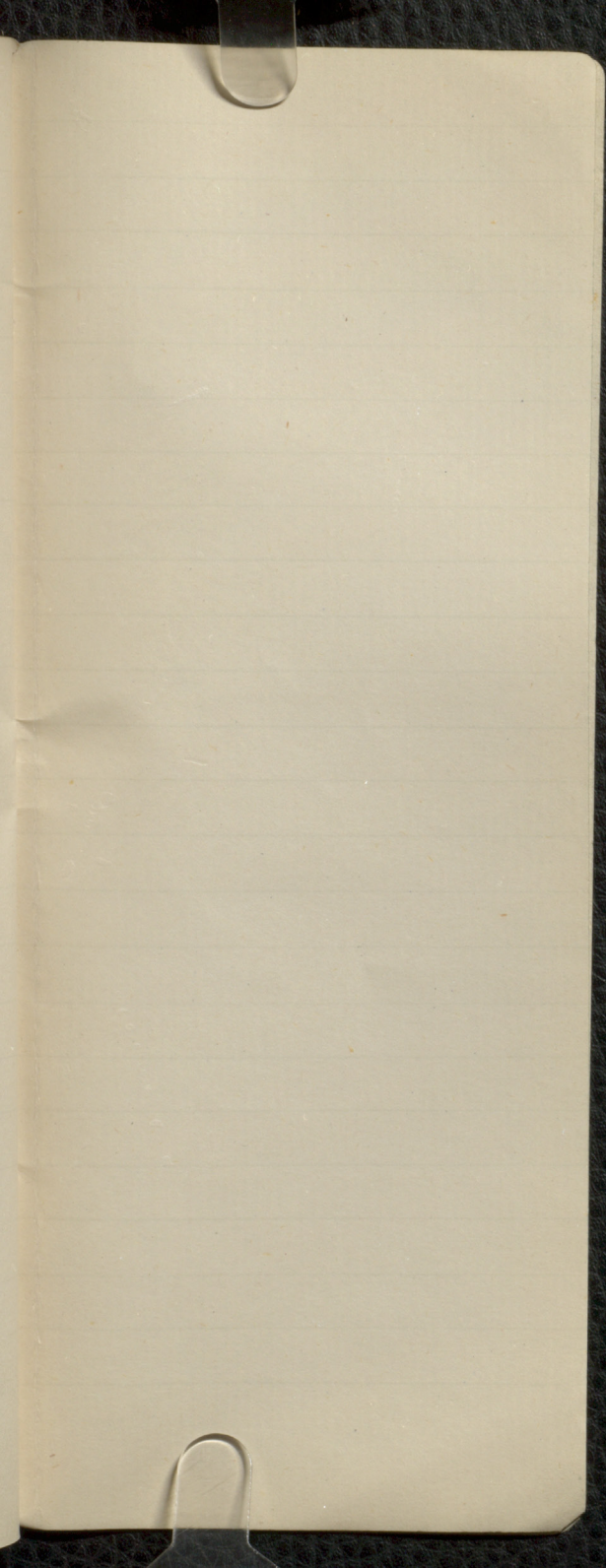


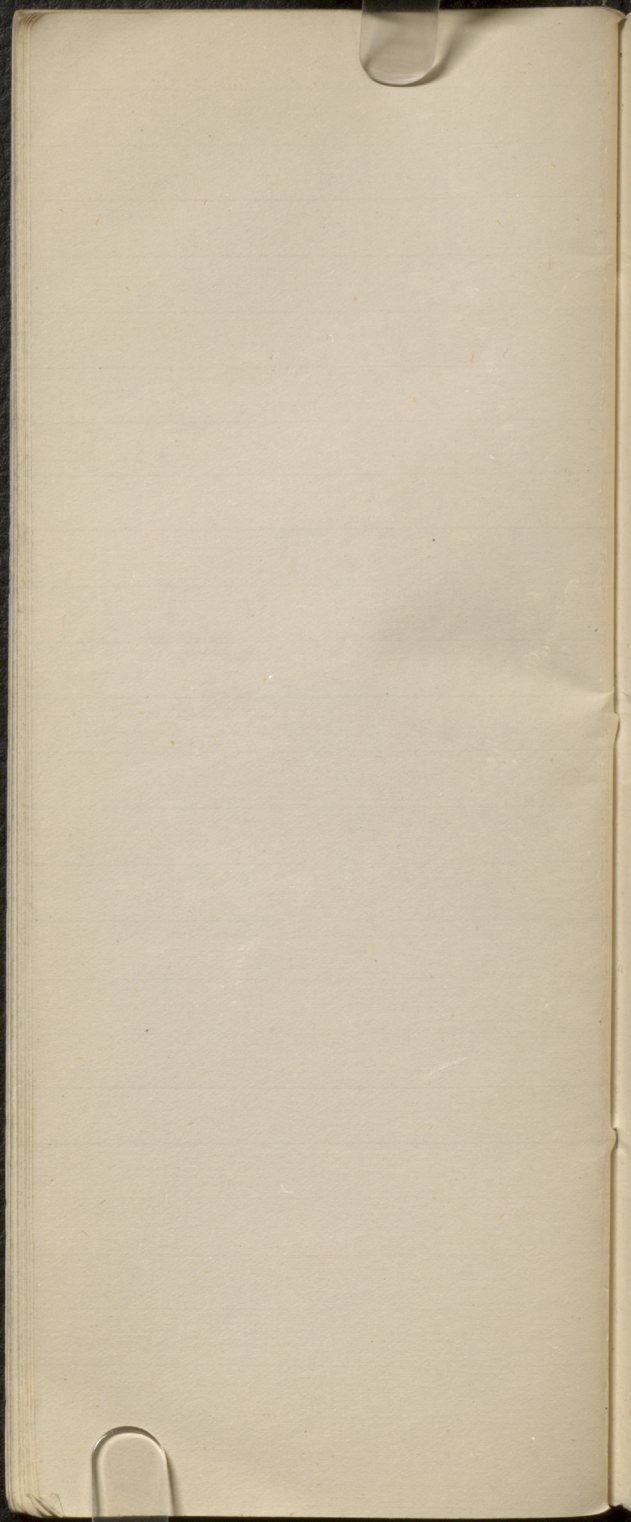


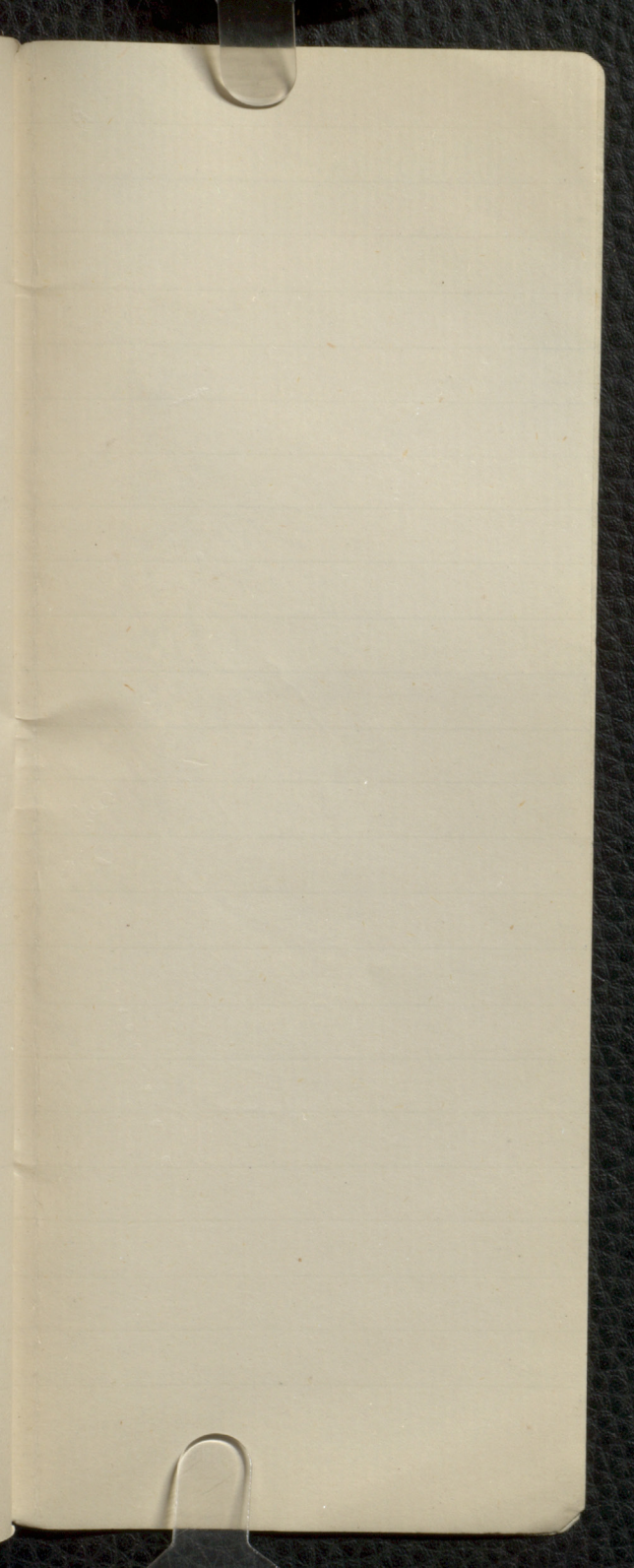












10/10

