

(rearranged)

As examples I may refer to Photograph No 13 (not figured) of Buthotrephis gracilis, + B. Grantii, figs. 16 + 17, true Fucoids, in comparison with fig. 9 (above referred to) of radiating funnelid marks, or Photograph No 15 (not figured), which represents a Lycrophyces, probably a burrow with diverging tracks. Simple and

Dear Sir William, I have not quite read the ~~letter~~ ^{papers} finishingly, but, having got the illustrations read, for plain, I send them to you to see (you need not return any), + mention that in one paragraph there is some confusion which I have tried to make clear as well as below note - "Photographs 14 + 15" do not correspond with "Lycrophyces" + "Lycrophyces", because one of them is Buthotrephis Grantii (carbonaceous Fucoid) - Not time to catch post - Yours very truly

W. D. Jones

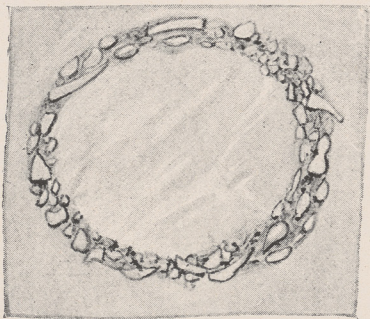
Photop. X. Fig. 14



1/3rd nat. size.

Fig. 12

a



b

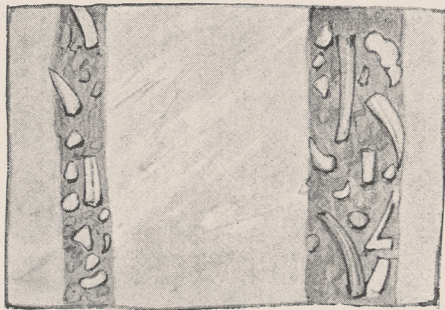
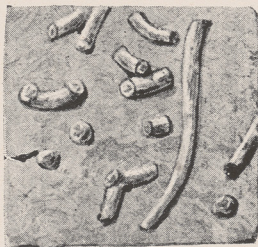


Fig. 10 Block

Fig. 11 -

a

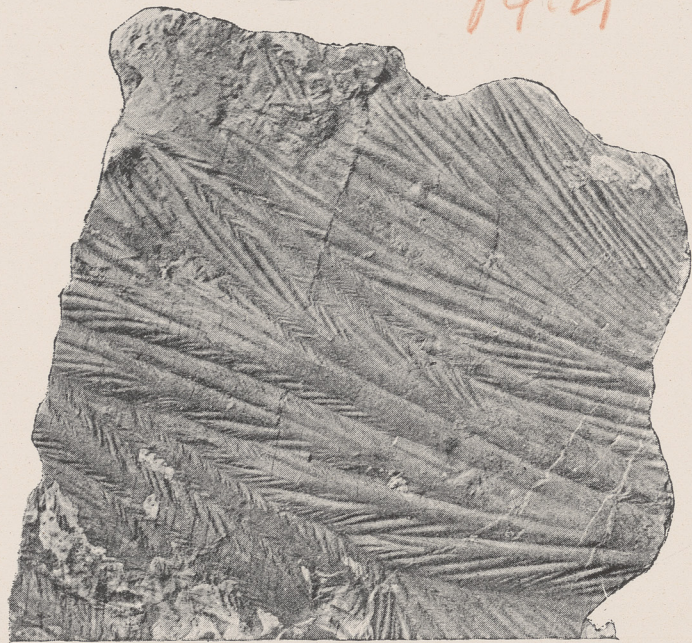


b



c

Photogr. XVII fig. 19



$\frac{1}{2}$ inch size -

Fig. 16. Block, Butthotrephis Grantii - Silurian - Canada }

referred to by Christaller
in the text as
Palaerophycus

Photop. XIV.

Fig. 17 - Butthotrephis Grantii - Carbonaceous
Niagara Formation }



1/2 nat. size

- Fig. 1. Block -
2. Block
3. Photogr. II.
4. Phot. III
5. Block.
6. Phot. IV.
7. Phot. V
8. Drawing
9. Phot. VII
10. Block
11. Drawing
12. Drawing
13. Phot. IX.
14. Phot. X.
15. Phot. XII.
16. Block
17. Phot. XIV.
18. Phot. XVI.
19. Photogr. XVII.

Fig. 1 } blocks
Fig. 2 }

Phot. ~~fig. 11.~~

Fig. 3



Fig. 5 - Block

Photogr. IV.

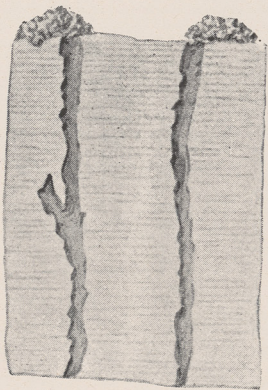
Fig. 6.



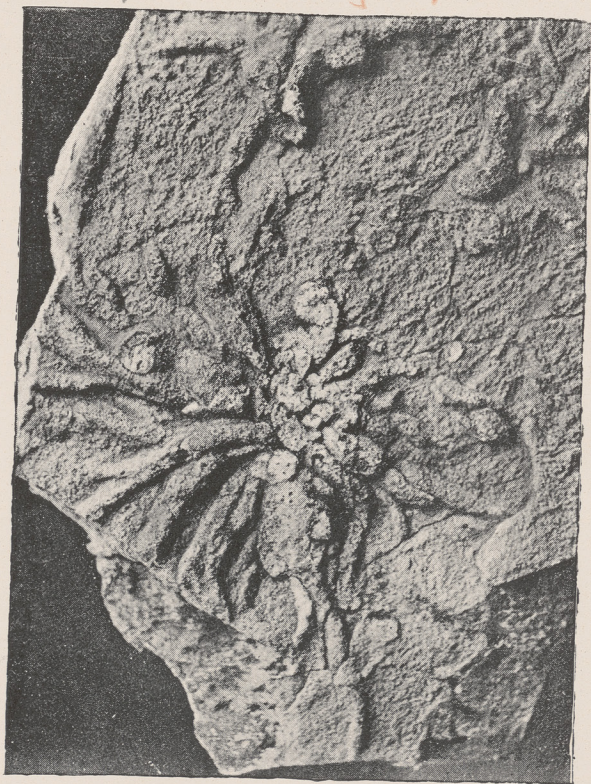
Photop. V. Fig. 7.



Fig. 8-



Photogr. VII. Fig. 9



Photogr. XVI. Fig. 10



1/2 nat. size

