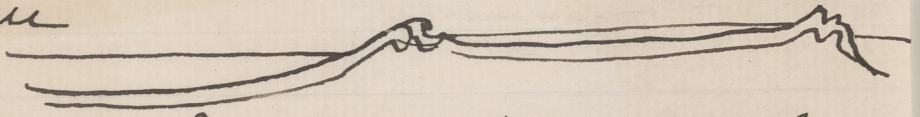


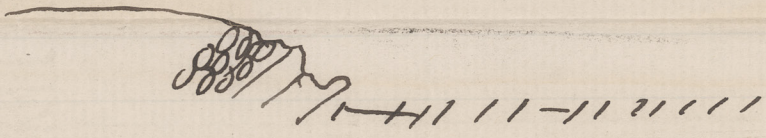
Paper of 1889 Subsequent with

1. Lumber group ^{now cease} was Oceanic ^{Veins}
Plateau




Great distribution, On level Chem used
from Plateau Lumber group = Oceanic
Calcutta & Chary. Special to present
Sights because these sponges belong
to Atlantic not to Plateau.

2. Lumber & Metis

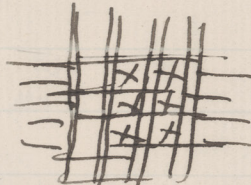


= Silly beds lowest Ordovician
in transition to Cambrian

		Hexactinellids, Murchisonella, Dactyloporinae
Sponges		
Pholopora	+	+
	+	+
	+	+
Dugnella	+	+
	+	+
	+	+
Hyalostella	[Cross-hatched pattern]	
Palaeospongia	[Diagonal lines]	

Cyathophyes 

Acanthoidia




Nephrolepis

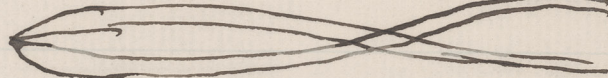


Roots simple /

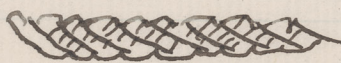
flattened /

shrubbed 

tursted and leafy



Spinal



Mechanum purples belled
lung apr - followed now

Pubols 20 species

one old sea bottle