

GEOLOGICAL SURVEY OF IRELAND,

Office, 14 Hume Street, Dublin,

8 June 1880

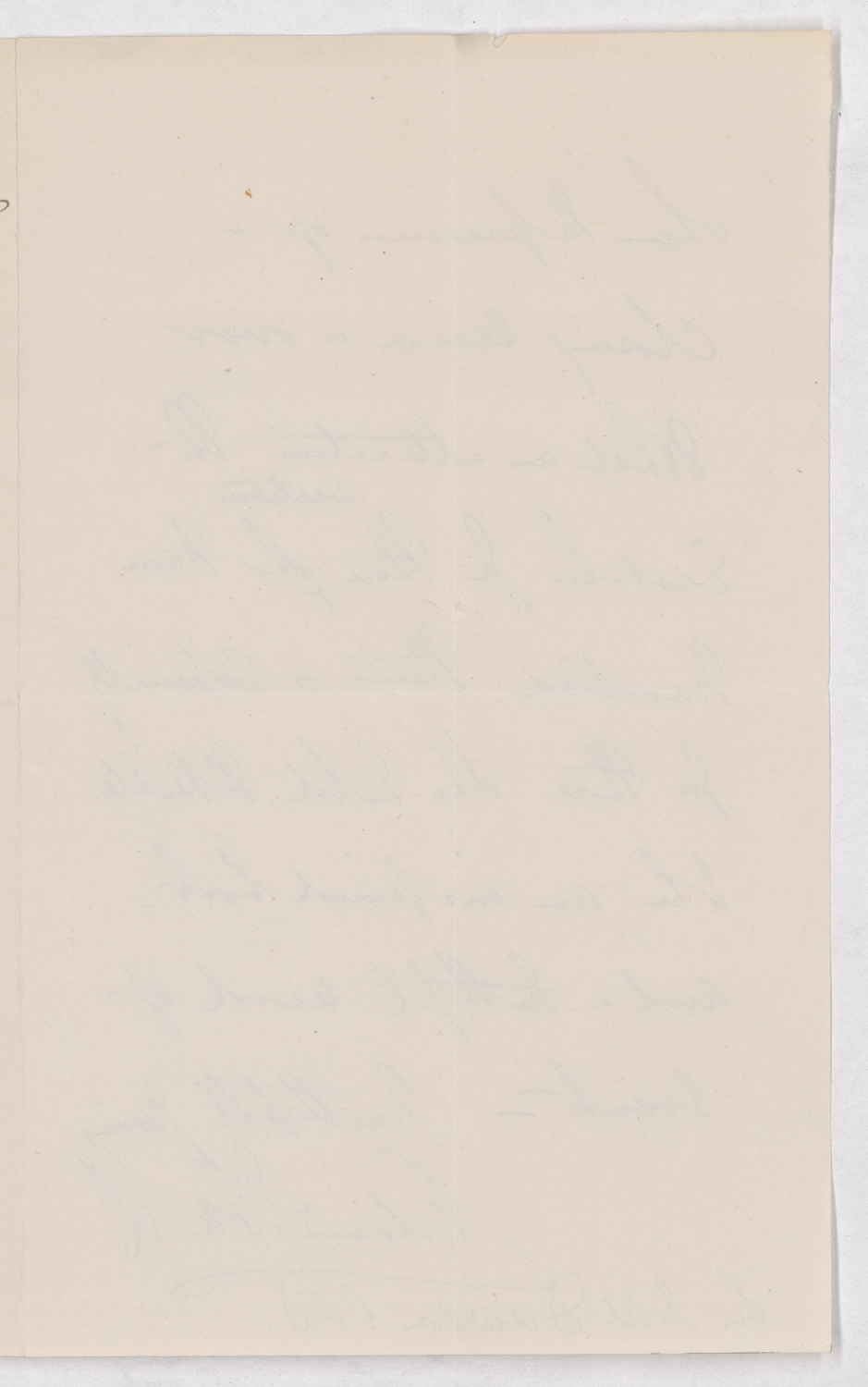
My Dear Friend,

Accept my thanks
for your kindness in having
a copy of your new book on
the East sent - to me through
your publishers - Messrs. Hodder
& Stoughton. I have been
dipping a little into it - and
will do so more systematically

Geological Survey of Ireland,
Queen's Hotel, Dublin.

Hull
J. W. Gifford

[Faint, illegible handwriting, likely bleed-through from the reverse side of the page.]



When the premium of a
closing season is over.

What an attractive Re-
western
East has for those who have
travelled therein - especially
for those who hold the Bible
to be an inspired book -
and a faithful record of
events - Faithfully yours

Edward H. H.

See J. W. Dawson & Co.