

FORT SASKATCHEWAN, ALBERTA, N.W.T.

## Fort Saskatchewan Alberta, N.W.T.

It can be truthfully said that "no other portion of the whole Dominion" can or does offer such varied inducements to the new settler as the District of Edmonton. With its rich soil, producing grain and vegetables of all kinds, which for quality or the yield per acre are unsurpassed anywhere, having an abundance of pure water, hay and grasses, it is a perfect district for raising stock and for mixed farming generally. In addition to which wood, coal, gold and other minerals are found all through the district. Fish are in all the principal Lakes and Rivers. Game is plentiful. The climate is simply grand.

Having all these advantages it is no wonder that the district is creating the attention it is, and has for some time past. Everything indicates that the principal portion of the immigration into the west this year will head for this District.

### What has Fort Saskatchewan to do with all this?

The answer will be found on a reference to a map of the whole District of Edmonton. It will be there seen that

#### Fort Saskatchewan

is the centre of it, and will, from its geographical position, become the great central grain, milling and business point.

#### Fort Saskatchewan

is the Gateway to the North-Eastern part of the fertile belt known as the Saskatchewan Valley.

It is the Headquarters in Northern Alberta of the North-West Mounted Police.

It offers free sites to any kind of manufacturing industries.

Has a number of business openings.

Is increasing in population.

Its building operations doubled in 1893.

It has no tax, except a nominal one for schools.

It does not owe one dollar.

It is the best laid out, most natural and picturesque Town site in the west.

It fronts on the North Saskatchewan River, and has the Beaver Hills (some 5 miles distant) as a background.

Main roads enter it from North, South, East and West.

All visitors in Northern Alberta are cordially invited to inspect the magnificent free homesteads, or improved farms, and also the natural advantages of the Town of Fort Saskatchewan, before deciding to settle elsewhere.

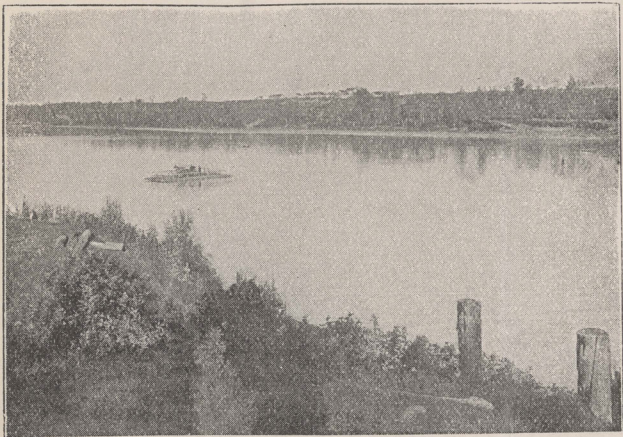
5<sup>th</sup> May 1894.

Dear Sir,

Many thanks for information per your's of 25<sup>th</sup> Ult<sup>o</sup>, received yesterday.

Since writing you last I have received several good specimens, which have been found here on the River bars - One is a hard baked clay (hard as stone) encrusted on which is a cluster of the crystals. Others are grey petrified wood with clusters of crystals - While others are black petrified wood (some weighing 30 or 40 lbs) encrusted on which, and on being broken up, in which, are numerous clusters of the crystals -





FORT SASKATCHEWAN, ALBERTA, N.W.T.

### Fort Saskatchewan

Alberta, N.W.T.

It can be truthfully said that "no other portion of the whole Dominion" can or does offer such varied inducements to the new settler as the District of Edmonton. With its rich soil, producing grain and vegetables of all kinds, which for quality or the yield per acre are unsurpassed anywhere, having an abundance of pure water, hay and grasses, it is a perfect district for raising stock and for mixed farming generally. In addition to which wood, coal, gold and other minerals are found all through the district. Fish are in all the principal Lakes and Rivers. Game is plentiful. The climate is simply grand.

Having all these advantages it is no wonder that the district is creating the attention it is, and has for some time past. Everything indicates that the principal portion of the immigration into the west this year will head for this District.

#### What has Fort Saskatchewan to do with all this?

The answer will be found on a reference to a map of the whole District of Edmonton. It will be there seen that

#### Fort Saskatchewan

is the centre of it, and will, from its geographical position, become the great central grain, milling and business point.

#### Fort Saskatchewan

is the Gateway to the North-Eastern part of the fertile belt known as the Saskatchewan Valley.

It is the Headquarters in Northern Alberta of the North-West Mounted Police.

It offers free sites to any kind of manufacturing industries.

Has a number of business openings.

Is increasing in population.

Its building operations doubled in 1893.

It has no tax, except a nominal one for schools.

It does not owe one dollar.

It is the best laid out, most natural and picturesque Town site in the west.

It fronts on the North Saskatchewan River, and has the Beaver Hills (some 5 miles distant) as a background.

Main roads enter it from North, South, East and West.

All visitors in Northern Alberta are cordially invited to inspect the magnificent free homesteads, or improved farms, and also the natural advantages of the Town of Fort Saskatchewan, before deciding to settle elsewhere.

2

Among the specimens I received are several rocks, from about 1 to 6 lbs weight, thickly imbedded in which, are numerous garnets -

If the matter is of any interest to you, I will have much pleasure in forwarding some pieces of the different specimens.

Thanking you again for courtesy, I remain

Yours faithfully  
G. Fraser Sims.

Sir J. William Dawson  
C. M. S.  
Montreal -



