



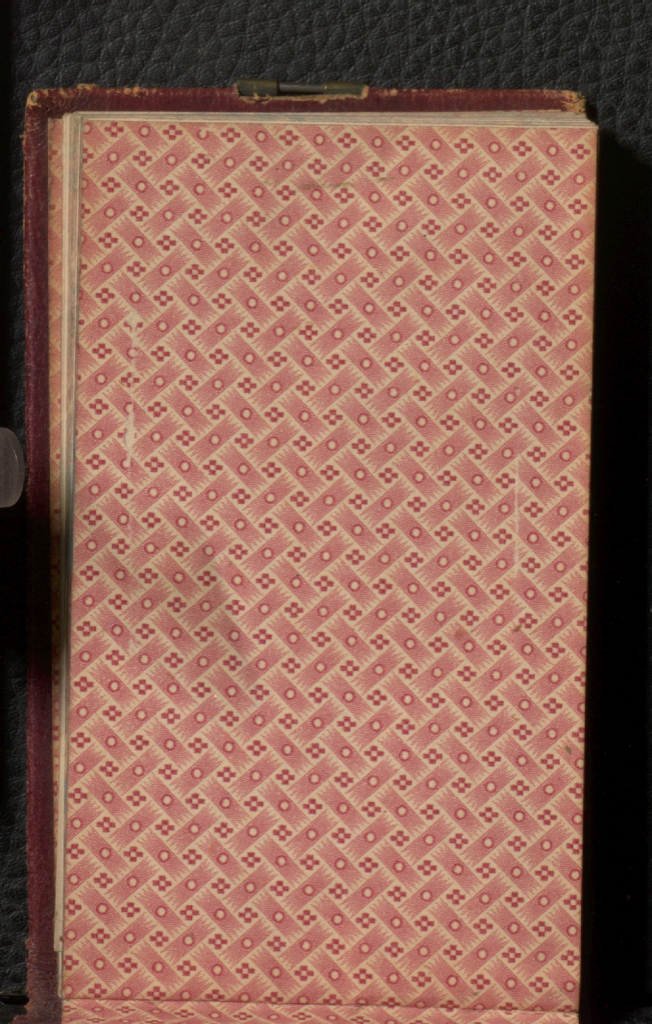
W

HENRY PENNY'S
METALLIC
MEMORANDUM BOOKS.



BILLS STAMPS.
Standard Bills of Exchange &
Promissory Notes.

4/	500	400	Exc 300 Not Ex 400
5/	500	500	
7/6	750	750	
10/	1000	750	
13/	1500	1000	
20/	2000	1500	
30/	3000	2000	
40/	4000	3000	
	200	300	3/
	100	200	2/
	75	100	1/
	50	75	9/
	25	50	6/
	10	25	3/
	Exc 5 Not Ex 10	400	2/
	Not Exced 5		1/
	Exceeding £4000		
	10/ per £1000.		



115







Wene allent the
Jenns

Ballie has peltly
of Laurent rare
Wray of Kent
Chary
Pindam be

W Side of Glass
Near Lower
Wharf

Several Goshawk
with Brown

Setts in regular
bands

Properly marked

Wagon dishes

E & W Wharf

To back side
of island
near old mine

Passing a
cave alt
two pieces being
old bundles
at head of
Breen Vapors

Sunny at 600 W
6 to 10 miles, that
near the abridge
of road when she
was seen angular
soft in

227 paces
in all of
them to
point to the
Mentham

place hard rock
looks like dyke
only being

broken into
pieces of quartz
& chert imbedded
in it and pieces

At 190 paces under
of trap dyke

at 156 paces

Dyke of spotted trap

8000 ft 600 ft

Hand map like
rock dipping
to NW all two
of pebbles upland
into Brecken
Seems as if the
hand compass
each way they
his had pointed
up to Brecken
but at the

The beaver has
1 piece of? Calupem
1 ft in dia
Many smaller
ones

From this to next
point course
N. E.

160 paces to
beginning of ledge
A pair of

hard, much like

160 Pieces
Gravel & Boulders

Timbered 8
ft 10 pieces

From this point due E
150 paces to post
on hillside upper
end of plateau
outside of little pine

Here Great. rough
& loose of Basalt.

beve bedded
trap & M shale
dipps to N of 300

I all 100 ofms
a low flat reef

~ 300 N
A large bank
across line at
S end of Island

160 pieces

back track

6 paces to foot
of bank

Water hole
here dips to
SW at small angle

From stone
E. 15° S

60 paces
Water hole &
depth of hole
seen above

Gilpatrick dyke
very 8 E
Same as no 1
2 ft

Shale from 3 feet to 6

green trap dyke
1 ft same
density

Green 11 pieces
green

Alca shale
with unbedded
black trap

Ymuths point
Under line for
water edge
NW 4.50E

5 paces gravel

blue shale

of thin gray leaf
dike running

SE 3 paces

Gravel & shale
11 paces

Dip appeared
to SW at
high angle

The 8 paces to
boulder at
SW corner of
plains

Landing plane
check 838 E
to run on shore

106 paces

to exposure of

shaly felspathic

tray course

860 E. thickness

seen 3 ft - 20
paces seen



2 specimens
Asaphus
megales

Juncus acutatus
Stem pectinatus
Lingula

Stem plicata

Phylodictya acuta

Macrus Weir

Cuneus Weir

Leptacis
allus

Orthocentrus

D-5

Spine
4



surface strated
is held above
glaciated into
sand & gravel
with a few
boulders of
Succinea gaulti

I appears to
Cut - No 4

Stratum on summit
true W. 30° S.

Quay exposes
about 15 feet of
gray bentonite seen
thin with bands
of shaly black sand
dip slight to
S of west dip the
5-0

Following this dyke
No 5 for 200
feet we are
to continue
of the No 5
on ~~the~~ side of quarry
- 5 -

Dyke No 5
is very irregular
to contour

It appears to

Follows from
this point E side
of quarry S. 10° W

20 paces come
to large regular
dike 2 ft to
1 ft wide running
W & East - heavy
vertical gray
amorphous rock
light with some
dark spots
shinos

to accompany
by second male
of the same
species 2 pairs
to the south

Still heard of
not 2h pairs
at 2 sides of
grazing.

Follows in

S 10° W dips
to Westward
at angle of
54° - one side
64° other side
of gray. See
Camp Gray with
60 pages

Beyond W 20
not there &

Seen to run out
to 4 inches

Will run out
to 4 inches

at this place
except of 4 inches

No 4 - about
4 1/2 inches thick
number to No
2 - 8 runs

\$ 100 W. 1/2

in middle of the
accompaniment
benevolent

Continuing course
of Dyke No 1
to Gray creek
seen beyond
this on opposite

Continuing across
creek 33 feet
Dyke No 1 is

of new level
of gray crevices
to bed site

in the bank
the pebbles

of Laurent grey
white quartzite
knaps of
from below

No 7 is never
square of the m
& parallel to
no 2 about 2
feet to sun

no 2 to 1 is that
no 3 to 4 to 6 is

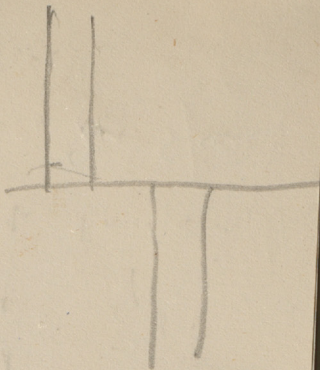
follows dyke
no 2 to ch

It is seen to
extend 50 paces

dike the course
of the dike
200 W. near
Berden a very
steep dip to E.

This dike is fine
grained gneiss
top with felspathic
shale & open
This dike crosses

no it is near



of columns
in same course
for 12 paces
when it is
crossed by another

Thickness of
dyke 15 m
dip to E
at angle of 75°
at 10 paces
from point where
cutted dyke
is faulted
& stopped by
N. things

65 paces by
near a dyke of
trap. 8 paces
north of the
road

Follows the dyke
S. 150 S

Dyke is gray trap
on one side
many pyroxene
crystals

abv 20 yards beyond
W of Road

80 paces to
Corner of
old site part
of Road

From the point
Curve of Road
£. 150 S to
old shed
at quarry

65 paces to

Wade End Road
Coke & Sons

Quarry Road
W. Quarry

Iron Stone Fence

to quarry old
buildings
- 2.50. CV

13 pieces Shaly
Limestone dip
slight to east

~~West Hill~~

~~Millwater~~

Quartzes appear
below & at
Millwater. Near
where workings
of gold

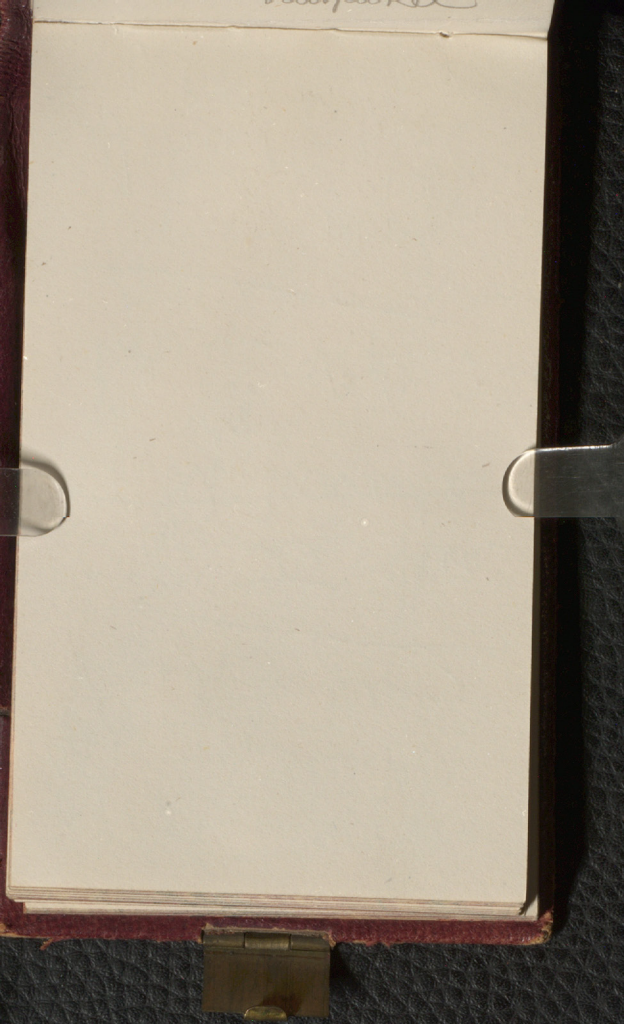
L Carb appears
6 to 9 miles from
London - near
at Quartz R
& then slates

Note abt Murak
The faulted of
roads in Mining

Granite near
Mt Murak
between Ballant

~~WORLD~~
WORLD
Spurred granite
belt between
Ballant

Handwritten text at the top edge of the page, mostly illegible.



Whif 2 seen near
glue mounted &
disturbed Greek
fault parallel a
near to the beds

abundant as
blende

gives in
— cap

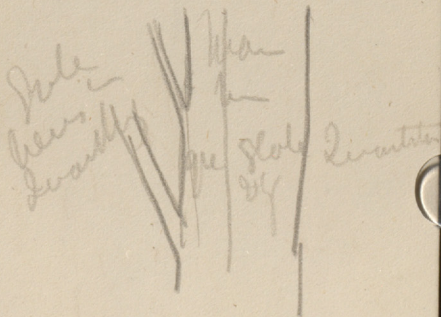
Selenia
Calc Ph

Alumite
Cherite

Alum
unspiked

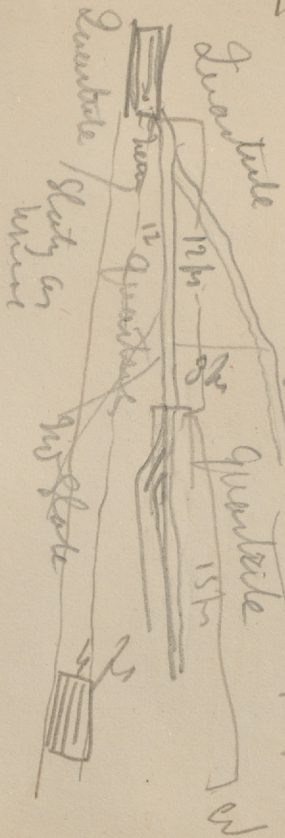
Mt. Maucke mines
Strikes East of
Stuba - small
knowledge - a
slight ridge - very
low of camping
of alternate bands
of quartzite
of slate also
except vertical &
strike E. W. The
solid purple -
quartz bands in
the slate layers

Sketch of
Dikes

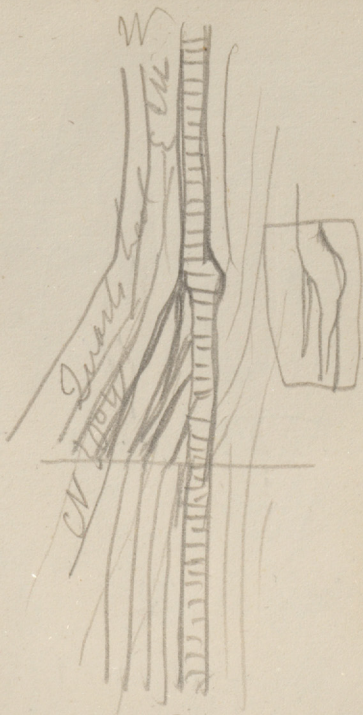


Large fault
Joints at right angles
to bedding

M



CN
 Gneiss in
 Campbell's
 property



3

Handwritten notes at the bottom of the page, including the word 'Quartzite' and other illegible scribbles.

And then things
at the surface
under below
heads of snow
hard times
the SWall
(as they)

The beds have
dip 55° to S-

To

East

W 30 W

To South West
Under unrolled
wall The bar
columns shaft
The heavy pierce

April 11 11

To be by not
in gold

Figure shows
When it is
quartzite

This new

lines presence
distance parallel
with which then
the which lines

Dr. D. R. Ross

Prof

Dear Sir

Quarter in hand

Gay quarterly

Strike or before

Dr. Ross & Co

Western Sound

To be paid

Just underneath
of the Cur
It is very ^{quartz & slate}

Granite



Quartzite



Slate

4 ft

~~Change~~ then
greater. Skate
As is

Patton Prop
Based 4 ft
wide strike
as above

4 ft 4 in

East passage

Mon Moche

in shaft

white quartz

vein 3 feet thick

vertical sand

to be produced

shh $\approx 80^{\circ}$ S

Close to this

on the N

is a "vein" of

abandoning to
parent / me
I've been \$6000
taken by near
surface

Earl of ...

put with curve

alt 80° to 85°



Small distance

to cravath

sep of them when

dip to S. - 85°

4 ft wide

then faults
near

Ducres Camp
said to be
thin of 14 by
mud coll
spur of Curves

^{July}
dip to south 85°

Wallace a
wide slaty layer
with many wavy
vegs & dips -

South with Curves

Stuber
M83

SH-

8100M

5202

S

New Year book
Wales band
of Male Off-
Papers in north
of quarter view
from 2nd to 18th
by fine fossils
to Smith
this

Am. Wales
Thin - banded
Surt in ~~soft~~
slate granule
~~thin~~ walls - soft
Opalena and
fossils of Opites

Murch Centre
Shaft 150 ft older
old Intosh —
2 veins in the top
of 2 ft — 3 or
4 in — has
Cap. pyrite with
Gold bearing

Journal

2 ft
shale

quartz

quartz

(95 quartz)



Muriche
Furber the
bank of glute
with parallel
veins of platy
quartz rock with
an S. flint
etc —

15 M
2 ft Star Wars

Quartz & Slugs
16 M

Beans & Slugs
Space of 10 feet
sketches & pulled so as
to remove or
stop the beans

W 5

quartz

8 ft vein

quartz R 5 ft

vein
2 ft quartz

Quartz R
& slaty
13 ft

2. 1005
N of this
5 pages of Journal
had been
not seen —

3rd item may
be of quartz
parallel with
strata —

Mt Umacke
Vile

Menture Camp

Slate vertical
aft steeply of

quartz - thin

quartzite on

east side

thick ≈ 100 S

Old Inuache St-

Gray granite

vertical

strike E W

small veins

49 paws

Salmon A
Mag ud flats
quarters some
dfr bive
and the
red m...
to pine cutting

My Darling &
Halifax - Stay
very amiable
and so very
for Walter, Henry
Aspell, and
Catherine the
Robertson
~~where I am~~
Helen - the

more pages
revised
Faintly
Logan



