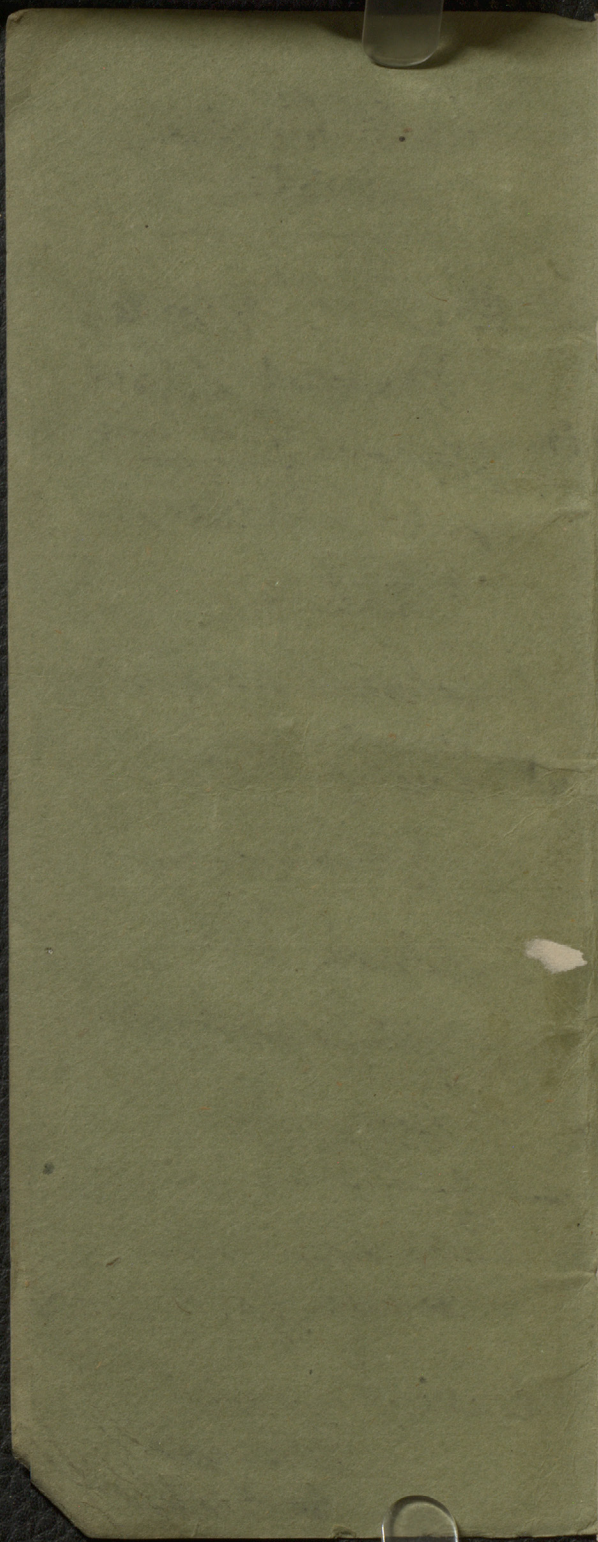


*Newa Soten
8 Miles 1877-8
Boat Trail*





The first thing I
 noticed when I
 stepped out
 of the car
 was the
 humidity.

It was a relief
 to feel the
 sun on my face
 after being
 inside for so long.

The air was thick
 and sticky,
 but it felt like
 a warm blanket.

I took a deep
 breath and
 smiled. It was
 exactly what I
 needed.



End of mountain
height but
distance for
further descent
of Seventy

Mountain states reference
to level in one
mile on north
side of Catalina

Note to church
Sulphur
at base of St
Church

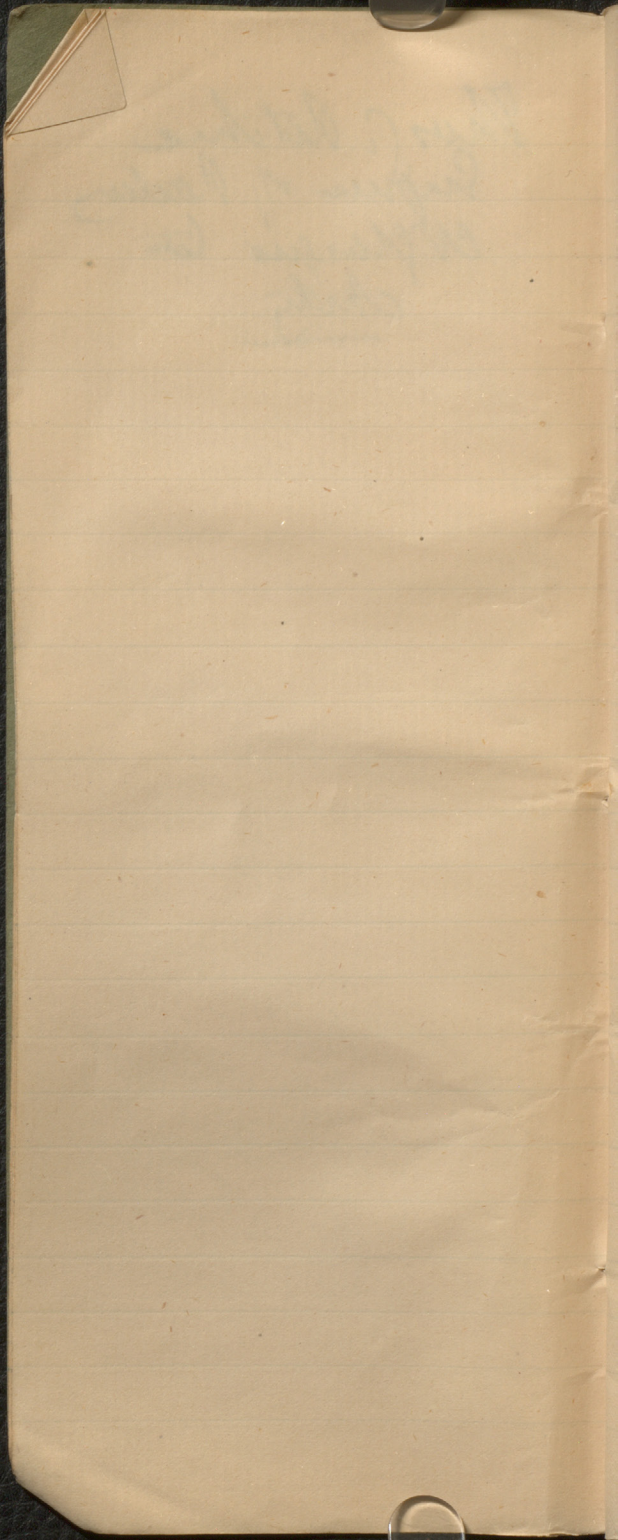
Argentiferous galena
& copper Pyrite

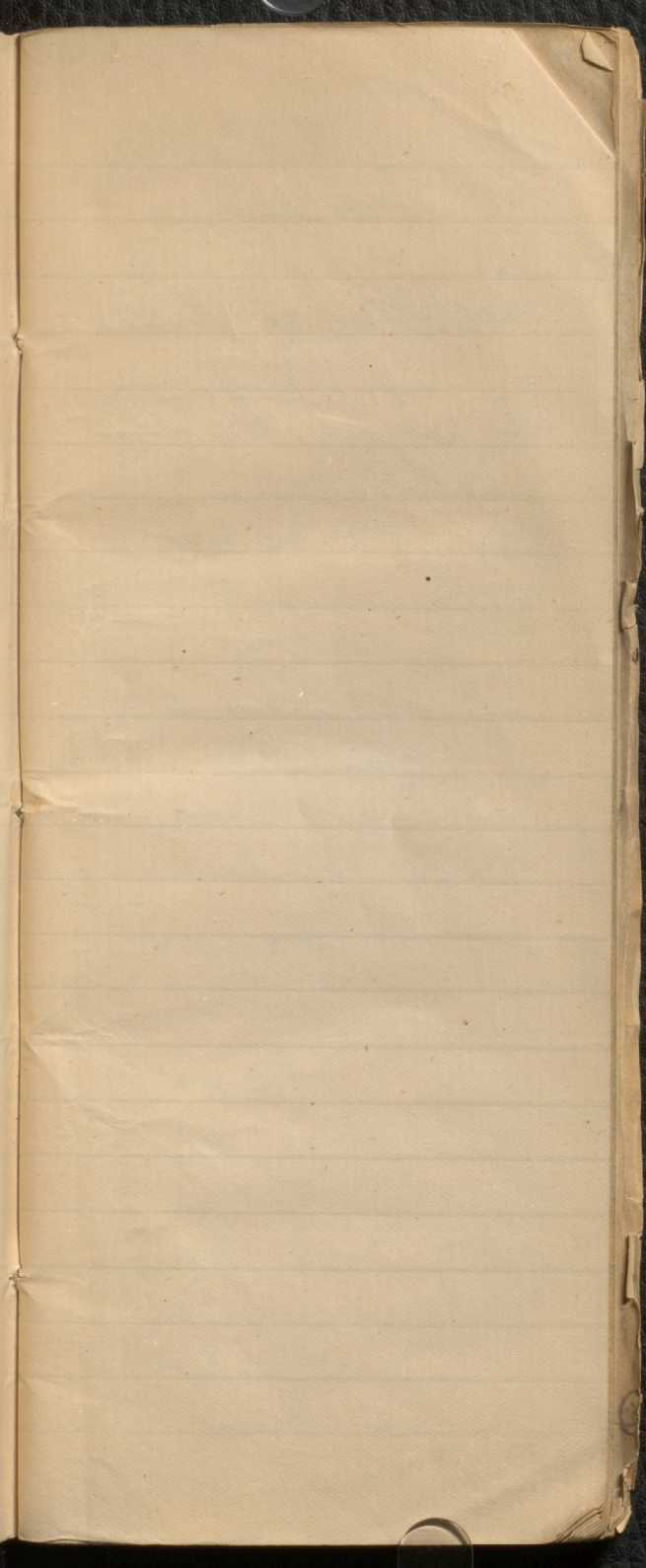
Bus & Mather to
2 ft

Very faint, illegible handwriting at the top of the page, possibly a header or title.



Thos. S. Ritchie
Engineer of Railways
Chargé to
Chity





Said to be made
for Warrick

Westworth

July 20

W side of Caldwell's Brook

gray sandstone of

Prun & dat. July

July N 15° E, 60°

Carboniferous Traps
Plants

In bottom of
Brook are seen
hard felsite rocks
under the last

Tunnel was

excavated

was cut first

then cut west

& middle

Felsite with glass

from here

many very good

In tunnel also

Red soil

E. Side
Coldwell's R

Same bed in
Gay Cut
rocks appear
obscure
than of
a small run
Folites -

These folites
from Gay
Cut are very
unshaped
& traversed by
veins of purple
banded beds
Gault
This latter is probably
hardly being

Thin cuts of
3 or 4 parts of
all same

Probably a thick
bed being broken
into E & W parts

Running in E & W
Cut from them
to S. 20° E

Mile Post 469 + 92

915 part ^{Westward}
^{along}

Cuts at the mile post

Begins with fossils

includes beds of

Greenish ~~sh~~ $\approx 70^\circ$ E
40°

Little fault ~~sh~~
S 70 L by ~~sh~~

This must be
part of ~~sh~~

In the Cullis
2 beds of Quartz?
at N end

At S end Bed
of reddish felspar
rock see spec

with Quartz above
& below

cut of spec

Felsite

and hard flint
slate above

Shake of Quartz ^{type} at
N 20° E _{cut of}
Cullis

This may be a
dyke with
altered rock
on either side

unequal sides from
either side

Beds at ravine
near show there
are faults &
probably some
strata is in last
cutting

Day at Entering

Workshop leads me
to SE of the

~~at the~~
~~General~~
~~at the~~
~~at the~~

In Tunnel Area

Shed

Grey & dark shales
at Dip of $76^{\circ}E$

up

These shales
very thin when
weathered

Shed
at end
181 Beak the SW
Crumpled grey shale

This is a plan

Black soft shale in 50
Here green clay
In the 4 feet
all 6 ft thick
Dip to S

Black shales
In S. dip
Graphites

Thin white bed
In the 6 ft
top

Grey & black shales
Graphites & Sphalerite

by the fossils
Sphalerite
Sphalerite

General SW
S 20 W by high
& wobbly

Great series of
gray & dark
granite thin
Rhyolite bed

Dyke 6 in
S. 10 E
gray trap

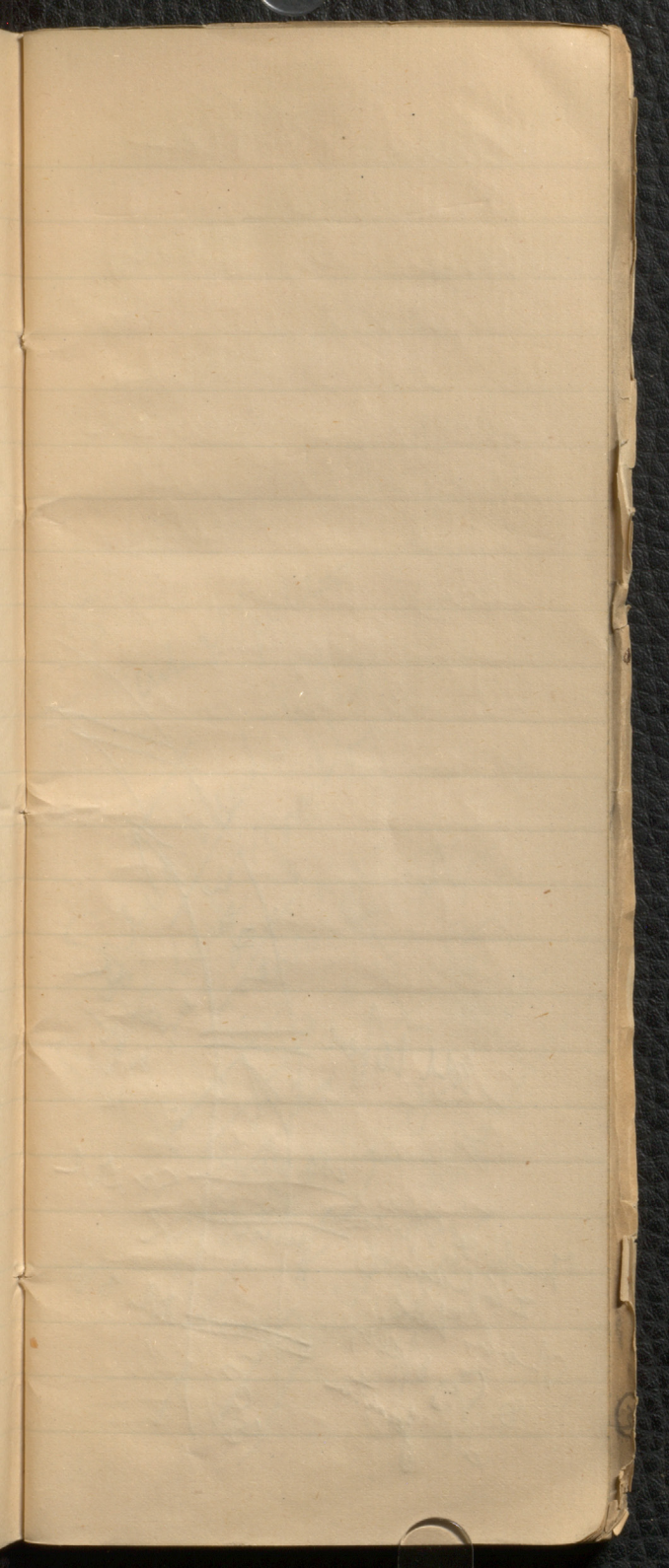
Beyond this
Dip S 20 W
high

Then by the
trap dyke bed

Slay felicit
Great thick
purple with fossils
Shots
Dip S. 20 W high

Shed

In the new case of
~~proceedings with~~
Spencer Sage
Dante with Spenser
Specks
This is a dye
run by S & Co



all 10 feet

~~SS~~

~~shale~~

~~shale~~

~~SS~~

Top of Shale
26 paces

~~shale~~

~~SS~~

Shale has
D. by itself
at junction

~~SS~~

~~SS~~

South of the
Tombigbee Rocks
run out into valley
in line of water
and in general
courses the great
Cynthiana shales
and Tellico, Purple
Bentonite shales, Top
with a white one
as far as great
shales where north
of Top of
the hills of
great

Note the general
area that is
more than
purple shales
pebbles of
red, of
cathodes or

Note Spudde
Top pencils
Muller's Series
Spente pencils
at and Ternes
as well ? of
Spente Series

Note Maps
See series of
old peddled by
Vally of Waller
Dun Spite probably
by Spente Series
Antiquary at
Terns Series of
at Cupinall
in Ternes Series

Note Let Series
Structure among
rocks and of
changed rocks

Through My Job
Some Working
Red Green and
after of that
That I shall
further a long
The Maps &
Journals when
Succeed —

The reports
of several times
and then
Abeyard States

London by States
to some way
into each of
of mine
on the edge

1877
In Mine
July 21 Ins

Great ridge Run
Why
Went by Johnson
in granite strata
my pile of fragments
then
dark band of
dark purple
stone

Strike at 70° W
vertical a little
dips to N & South
of center
but much worked
by Jones

Primer us
of St
L Carb Bed
anyhow
Dip S. 70° E
alt. 100

Quartzite

pebbles
very round

Summit
Martin's Or

Summit White
Sand

18 ft thin with
a few bands of
Crib slate

Dike N 70° W
vertical

or into very high
Dip to SE

Below Plumbe
Gry slate

above out
hill Lee
perhaps same

Adit Shells

well out W 100
off in strike

Grey Shale

8 to 18 ft wide

Note Red are
massive hard
rock, abundant
also

Brown are -
soft disintegrated
- potted with

Brown are to
Limestone
Limestone
Limestone

To damage level
accompanied with
Jetties

The Bound Valley
is same as
Peters on bank
Black slates. as
well as py

Investigate a regular
community bed
= 5 ft bed

? Sarge Run bed

? Run in same

? Mouth of

Run by

?? A G. H. S. S.

Mr Dudgeon

Mr Louis
chemist

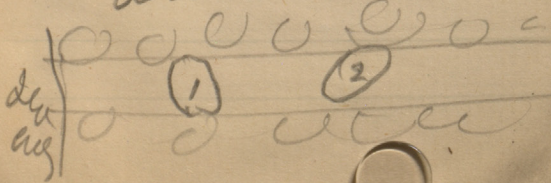
[Faint, illegible handwriting on lined paper]

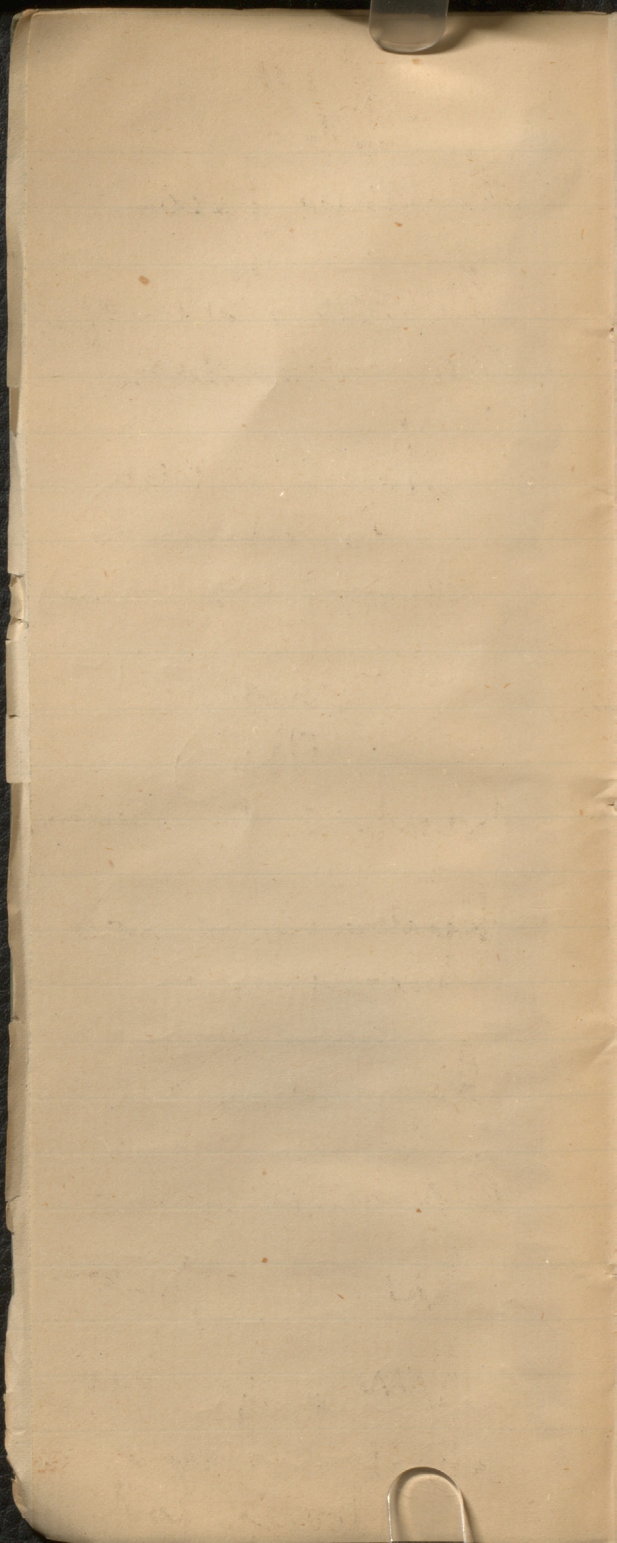
Boat trail nets
about 6 feet wide
Use Middle Boats
of 50 to 60 feet
Net sps following
changes

on large red clay
map of hard
sandstone 9 ft x 5
pushed me into
road cutting along
it. about oval
map 5 ft by 10 ft
into tank

about 2000 ft
wide

by 5 ft - by
I am dropped
at upper end
inside of
belt - 2000 ft
smaller than
about - this





July 11

Lighter June

Mass. Water of
grey sandstone

Dip S. 8 SW
40°

Intersect with

Coarse det.

Shale

Scraped to south

Underneath mass
mountain

By 250 feet

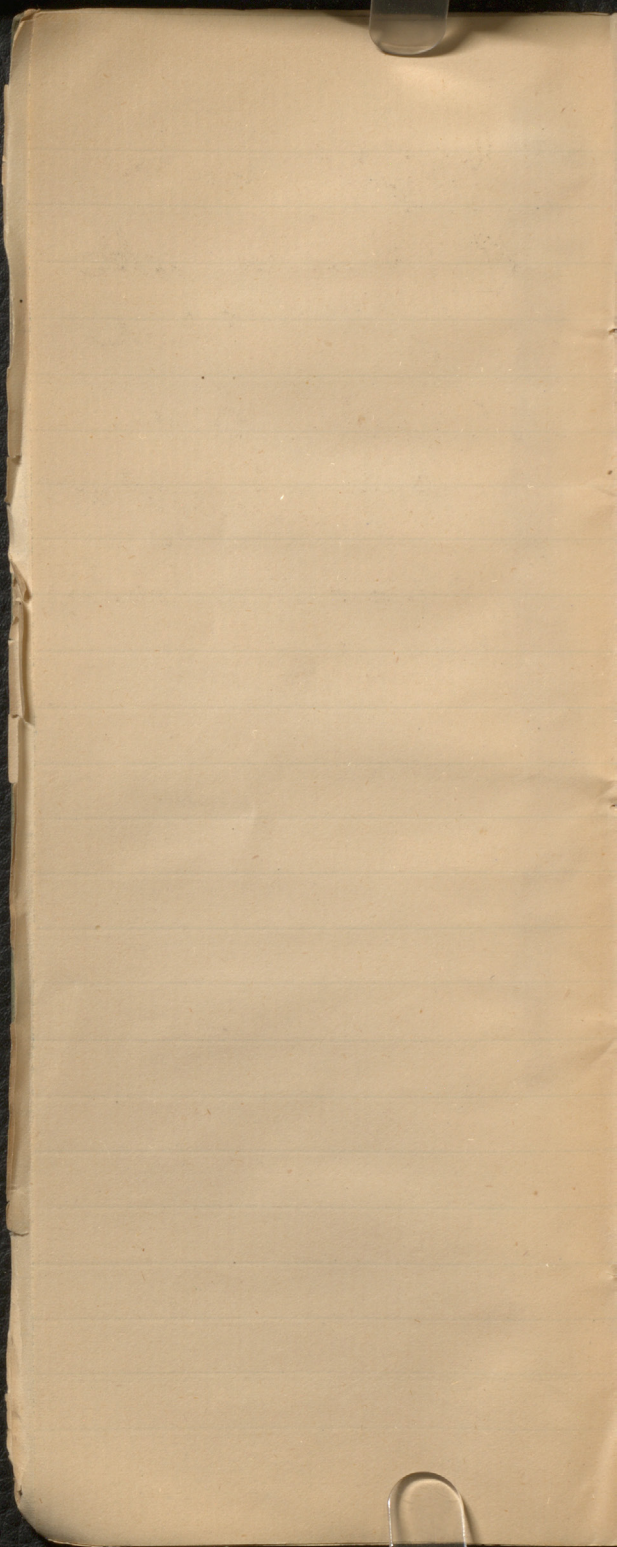
Some of the

layers, but

many for high

till below

Bones Rock



Graptolites are in
~~gray~~ beds with
many black
specks some
like *Leptolite*
Group of *Leptolite*

John
tree





Logans Aug 19

Bill has taken care
of the trees & plants
that were 2 of
the trees got 600
in diameter since
distance between
trees

At the top of the
page

1 day
Census taken
at 10:00 AM

Working bee
300 ft

of work
of census
taken

between 10:00 and 11:00

at 10:00 -

at 10:00 (check) 10:00

at 10:00
at 10:00
at 10:00
at 10:00

Apprentice (not likely)
James & handwriting
A large account
Currencies
Mrs
Murray Phillips
Cheney

Bellevue Hospital
of Cedar Hill
in Green Park
Growth in building
with many others
in the field

will stay in
above stream

Mr. S 3003 126
stay street grade
S. 60 W. May
center in right
city & W

Other stay due
check directly
in place

Green Hill
1817

Meaning large
Sensible water
at present made
check of any
Dues & Expenses
are straightened

Believe Eugene
of Cedar Vale
in your year
Graduation week
with two apples
in my hand

And my dear
above them
daddy's
them best
from Eugene
Eugene Eugene
Eugene Eugene

Believe Eugene
with Eugene
above Eugene
Eugene Eugene
Eugene Eugene

Great & beautiful
Garden when
so perfect
before every

For stock also

Stable \$2000

a high way taken

Then at 2000

when are sold &

For stock - the

with cut beams

of quartz & chert

stone

On right hand

side of stream

cut to 5 -

in depth of

at right angle to

For stock in depth

cut in depth

Drake a big stream
on steps left

These are the
quartz in them
quartz seen the
quartz

Mag. quartz
quite white

Mag. quartz
to see
with quartz
Mag. quartz
to see

Mag. quartz
to see
to see
to see
to see

W Pauline Dec 27
Milk Jan 54

~~Handwritten notes, possibly names like "Huntley" and "Glenfield"~~

Lower notes for my
of the same place

Handwritten notes including "Handwritten" and "of the same place"

Handwritten notes including "Handwritten" and "of the same place"

Handwritten notes including "Handwritten" and "of the same place"

Handwritten notes including "Handwritten" and "of the same place"

77

7

