

Notes
Boston

June
1872

Supplement
to Jones
to Young

Carypha aculeata
Tennis Point

Cordylus ruber
Australia
Like Cordylus

Clematis recta
very white
Spain
Europe

Robinia
America

Gymnocladia
Canadaensis
Coffee tree
By

Alnus
Europe
cut down
of Britain

Porter Boat Call
at Portland
6 PM

Fam Lewis
Boat

E. Darling
Mundy

Peper Steam
leave 8 PM
at 8 AM

Weddy

Leave Port

Early Rail

12:30

E. Jenks

Muller

Map

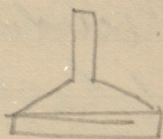
Over his

papers

Agam Museum

arrangement
in uniform trays
in cardboard

Flat cases with
a paper
insert



Pottery
these being
abandoned
in broad
flat cases

Books
Hypophyllon
Law of - The
case they is

Accidental clay
by my arm

Saw his

Increase

What name

preoccupied

of which

the Kellogg

Saw also

Sam of Duce

to the Duce

but by small

arm

Have no tabular

Apurur Mus

Mus 40 9 30

in 2 Jews

cutt uall

Cures 2

cutt 22

of pulley

Light from one

side of window

passy above

passy below gally

In other lines

the same are

repaired

by the same

One of the same
order was
sent to camp
of the Methodists
smaller than
the other will
be receipt
at end

9A

F. Brewster
Baker

W. O. Crosby +

Born at New York

Amphipods
Cecum

Japan
I was

May to send me
this

+ See his papers
in New York
Geology

Walkers atlas
of United States
Relay to Census

Map of 49th
Parallel
for Gray

Sherry desk
of fresh

Synopsis of
of W America
Vol II Pt 1

From Blakely
etc
New York

Index of Synopses
of W America

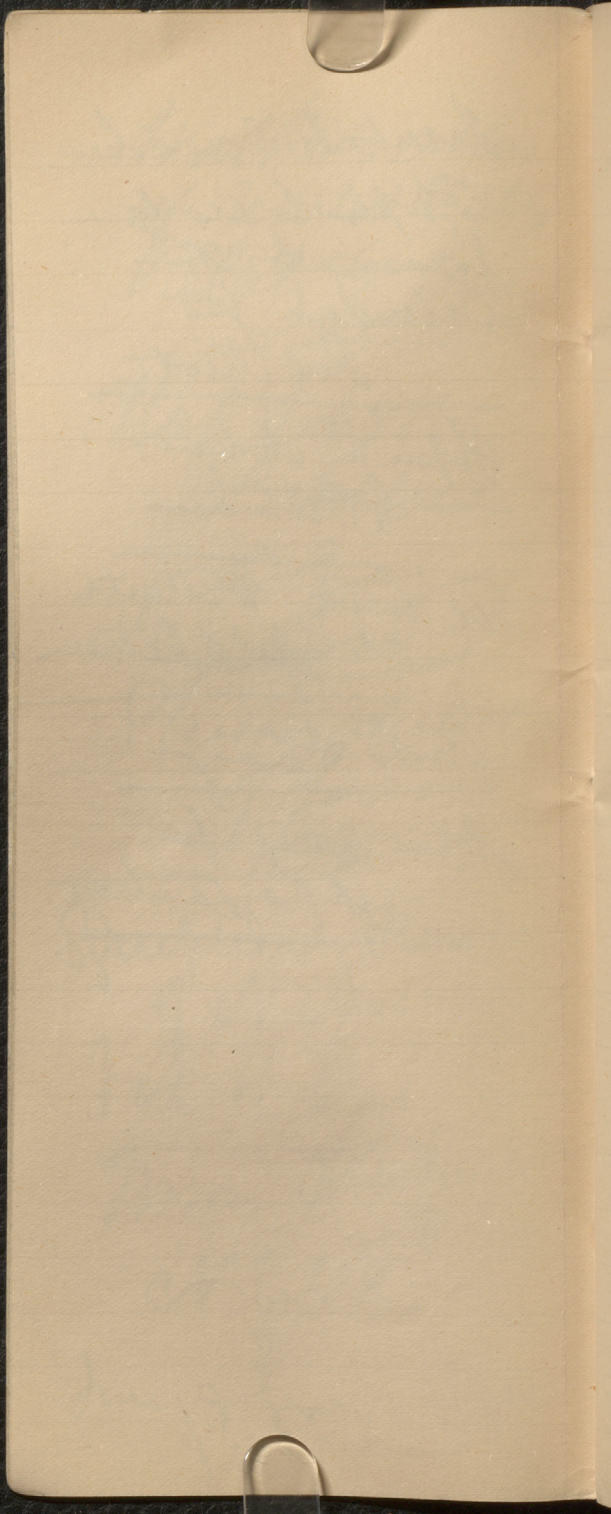
Memoirs to Scudder
Papers to Corby
Linnæus to S.
Calendar to
Rev Elliot-

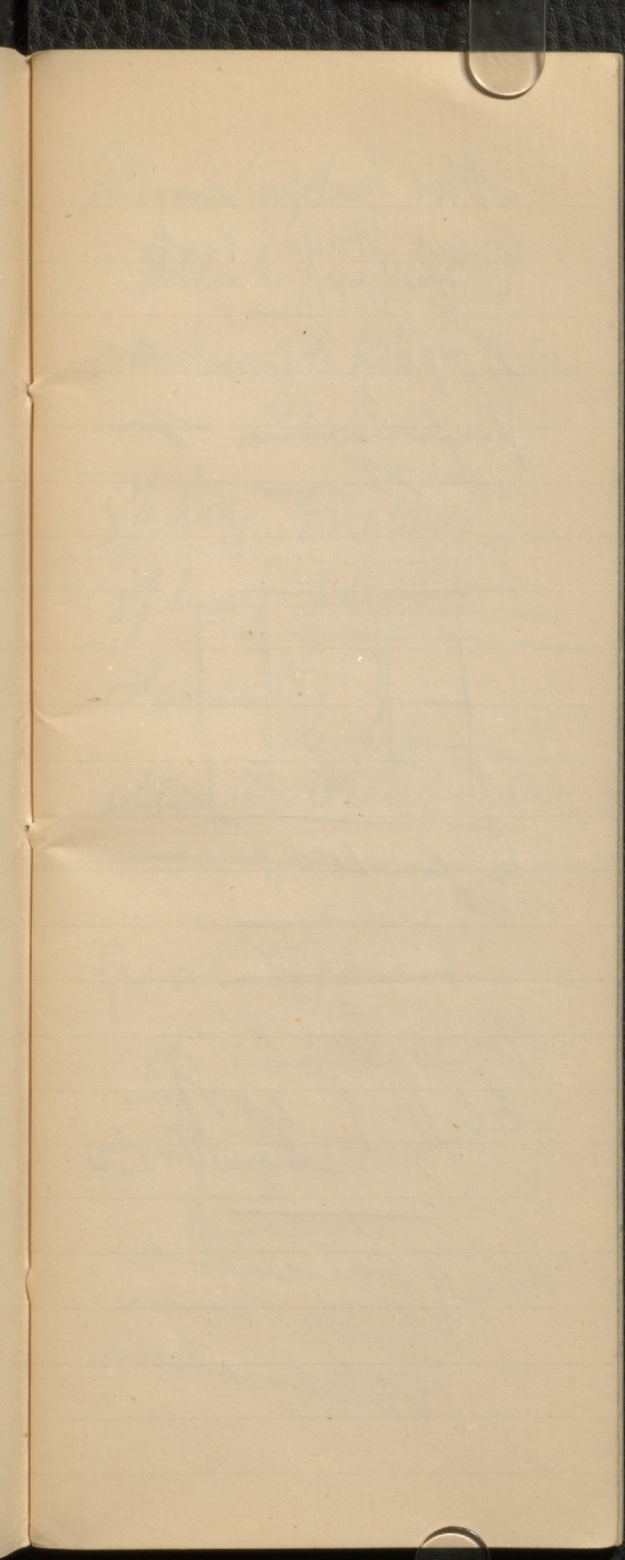
Papers in envelopes
of Putnam

To write & mount
all Spex. specimens

Books to Gray

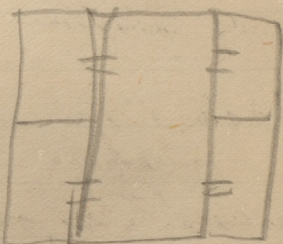
Repair Map for
Gray, Cambridge





Nat. Ind. by has
great Hall with
& galleries

40 ft \times 80 ft
from room of
at this



lines 100 feet
square

Approx. Area is

60 ft \times 20 ft
when pushed

Use of ornaments
for the room
& Salutations

Weyenberg

Blenheim State

Archives de Musée Teyler

Harlem

Sphinx Snelleni

Sphinx Schroeteri

Functus ?

Blenheim

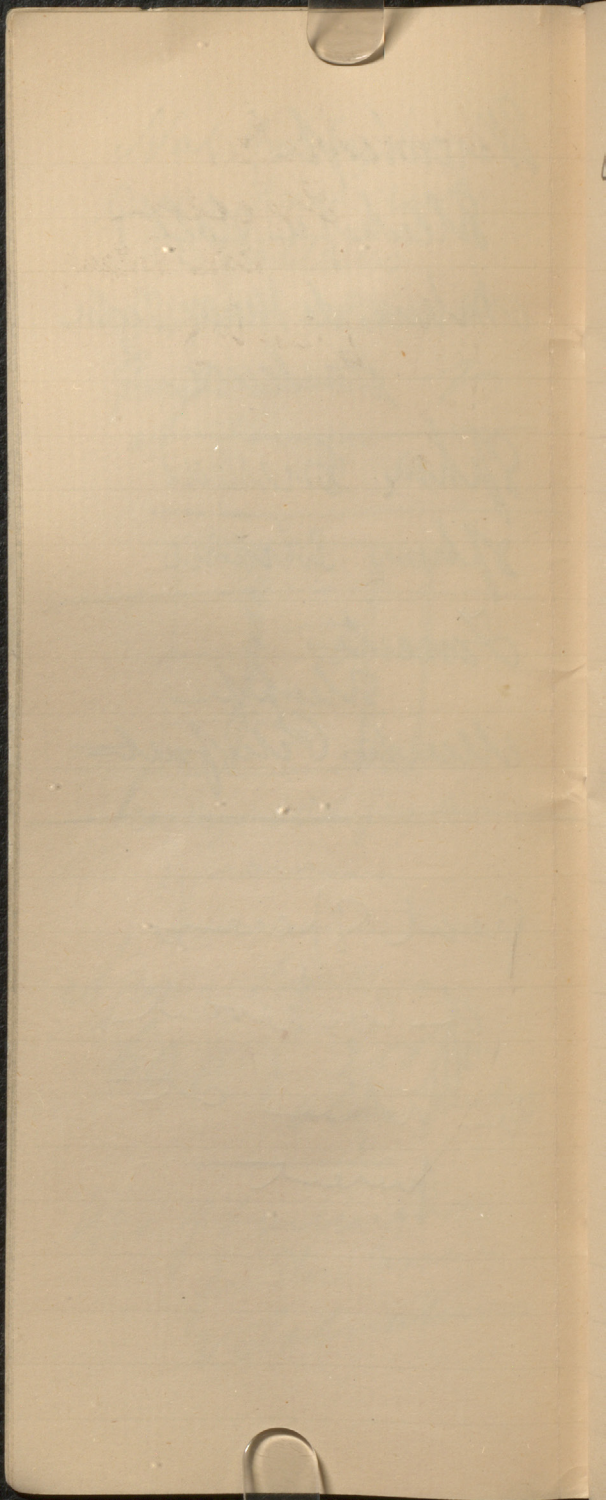
Musée Pétrographique

great species

of Cochran

in tapes at

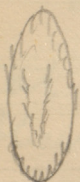
present



Chloophila

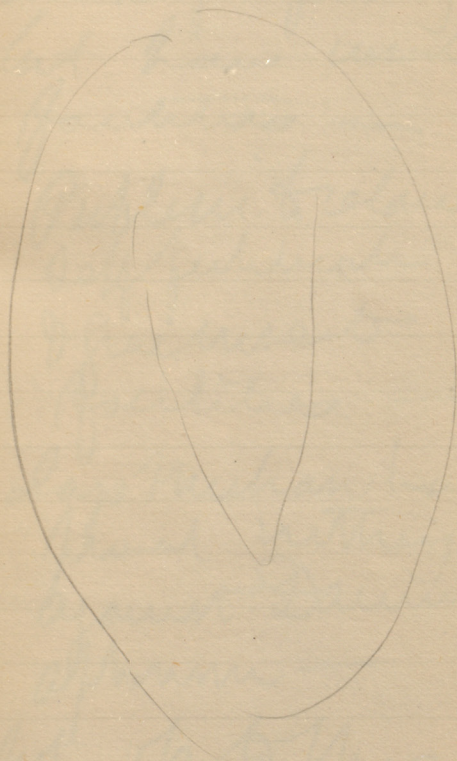
De celm

New Holland



- 4 ins long

= *Chloophila*



[Faint, illegible handwriting on lined paper]

Note. Pay leeward
about Dams
aphorism

that all Shays
flour related to
mills - state they
are self-sufficient
but have insect
facilities -

Problem to solve
self-sufficient
of fine insect
facilities -

Lays Mechan has
found nothing
against Dams
aphorism -

at ob to this
are 1st that
used facilities

Special function
to present bodies
and that does
not include
self-fertilization

? as to what
he calls
Cleistogamic
flowers

Saw a Fuchsia
with no
color except
green & yellow
and with purple
clust. flowers

? as to me a
self-fertilizer as
arranged into
insect

Some of insect
and plants & they are
not self fed
than for the
other group

Two adapted
dead etc
Cedar humps
from adapted
but that are
cause of the
insect.

Goodall
P. H. B. S. C.
Ch. W. W. of
London

Hampden

Learn Supl to

A. S. Frazier

Fred Hill

Puton

Hepburn unto

But John

Prussia

McPhail

ymc for

9 Hepburn

Land Ed

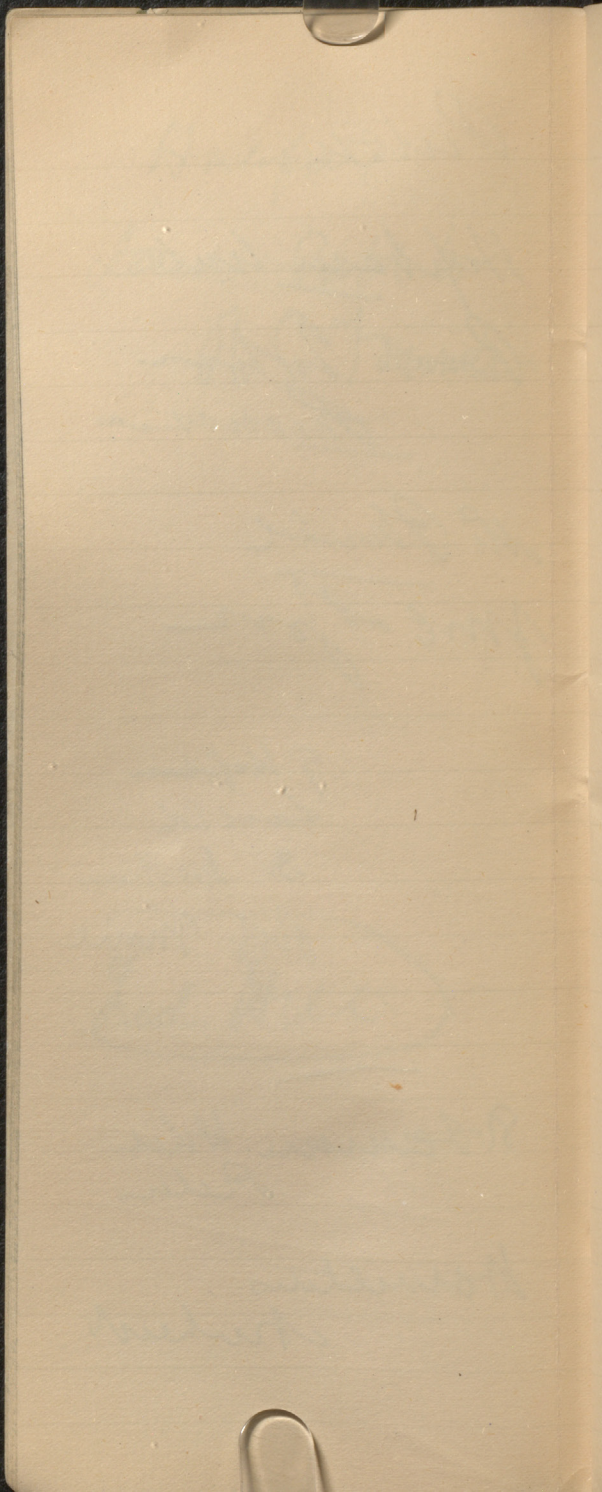
So he than

Pop mine

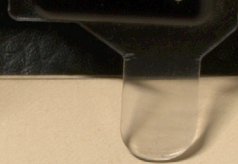
St Lawrence Whe
Peters

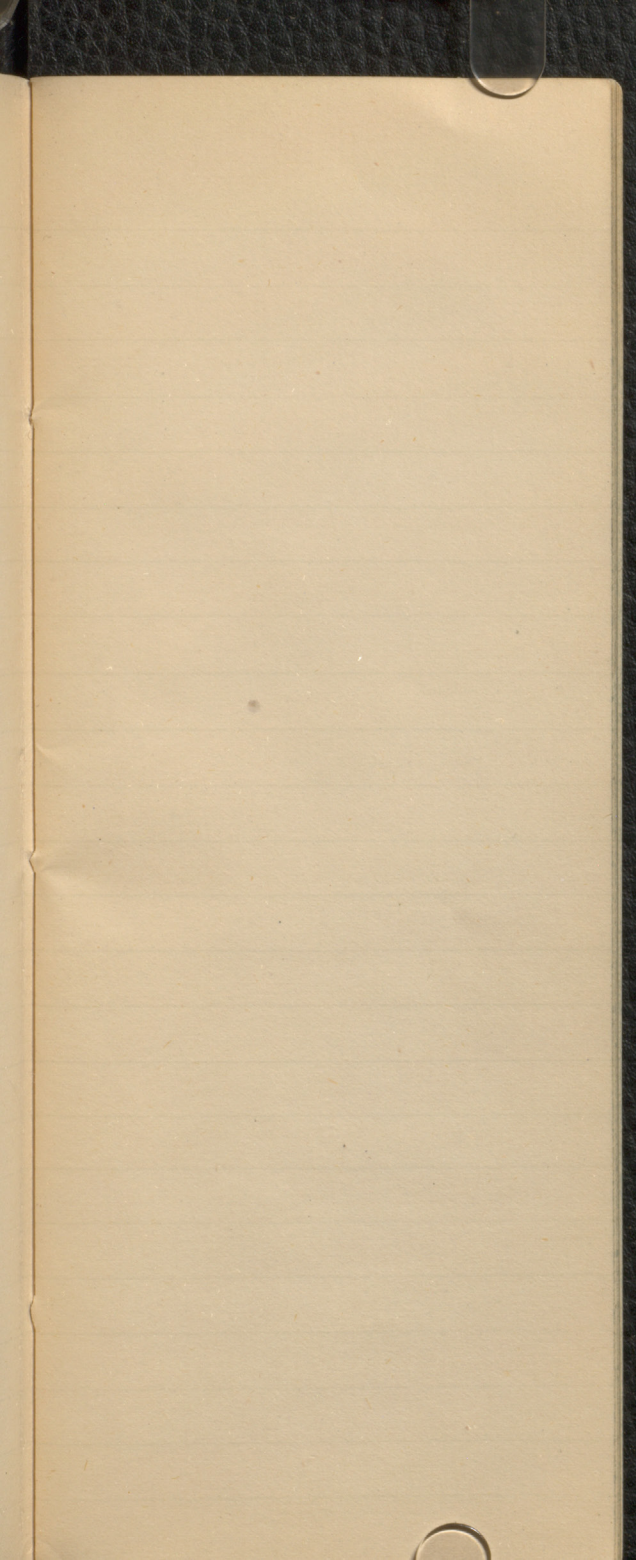
Samuel

Arthur



Earthquake
at Alway Bay
Tuesday Aug 9
at 7 a m
1878

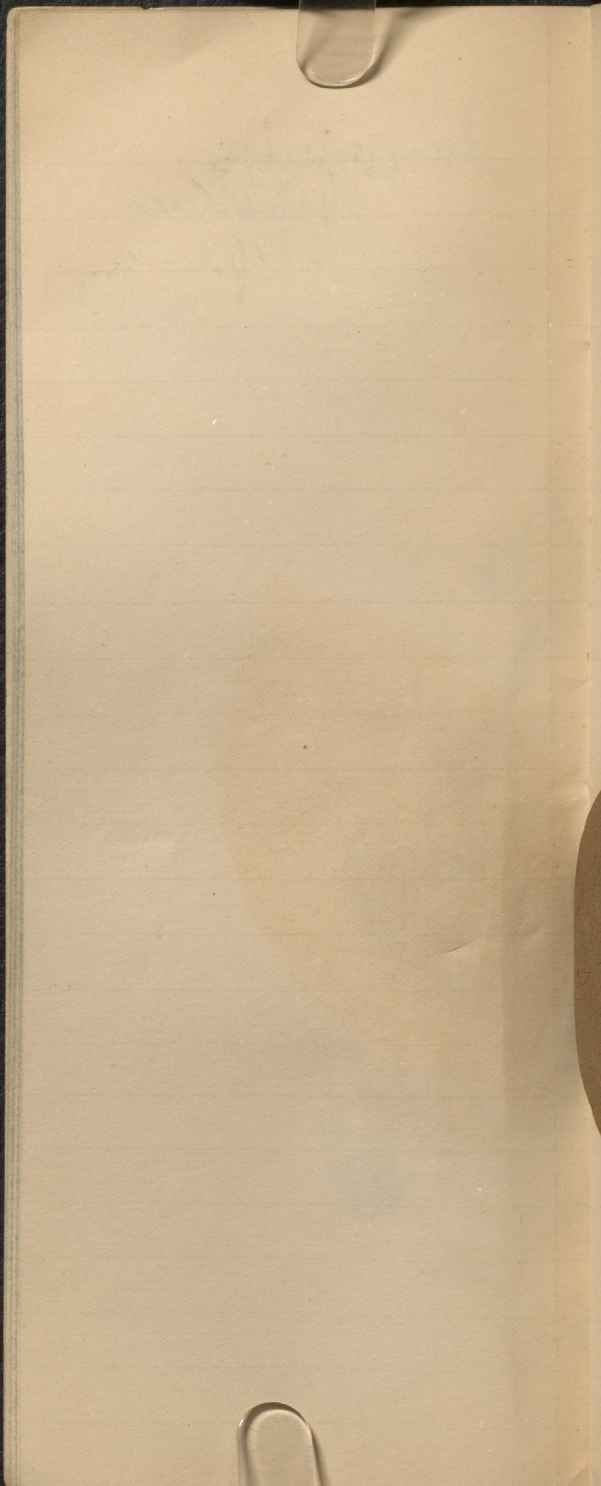






Zurcolum
dichotomum





Fraxinus
virginiana



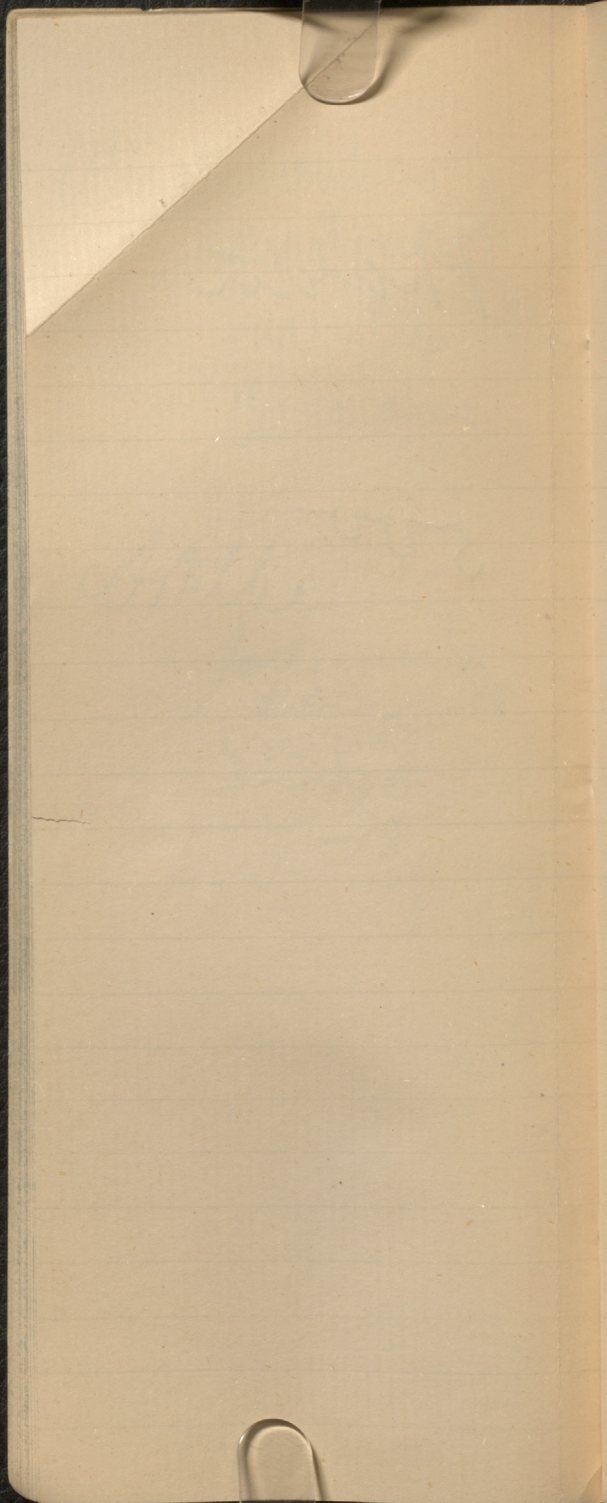
Phyladelphus
modicus
hirsutus etc
Crimson

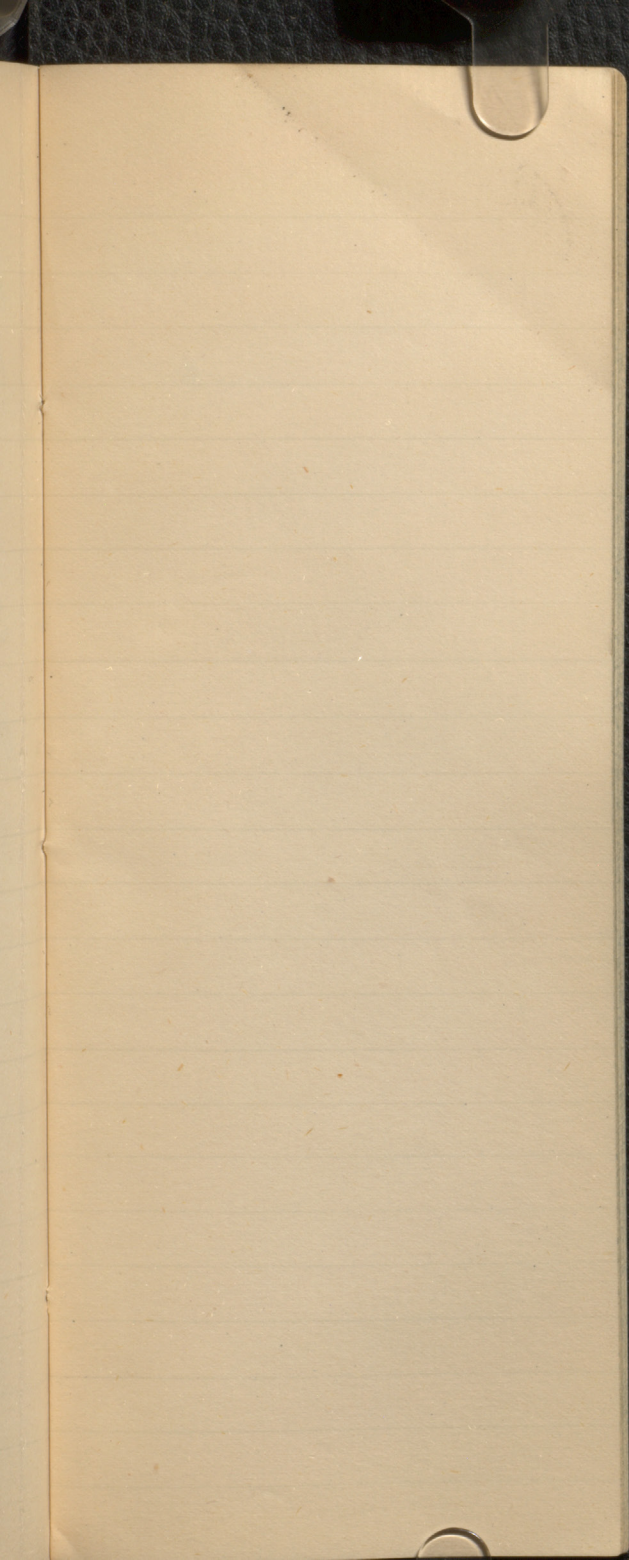
Astelia
japonica
small
white
green
etc

Thurston

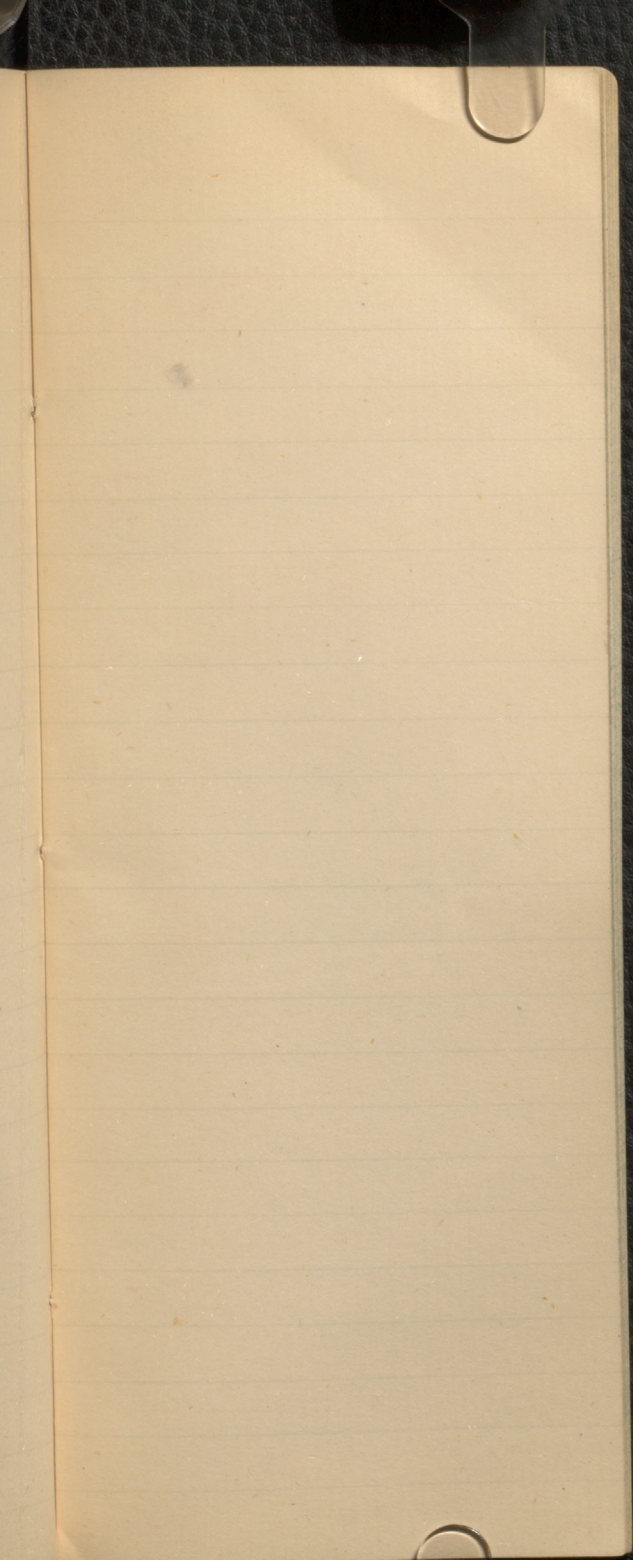
500

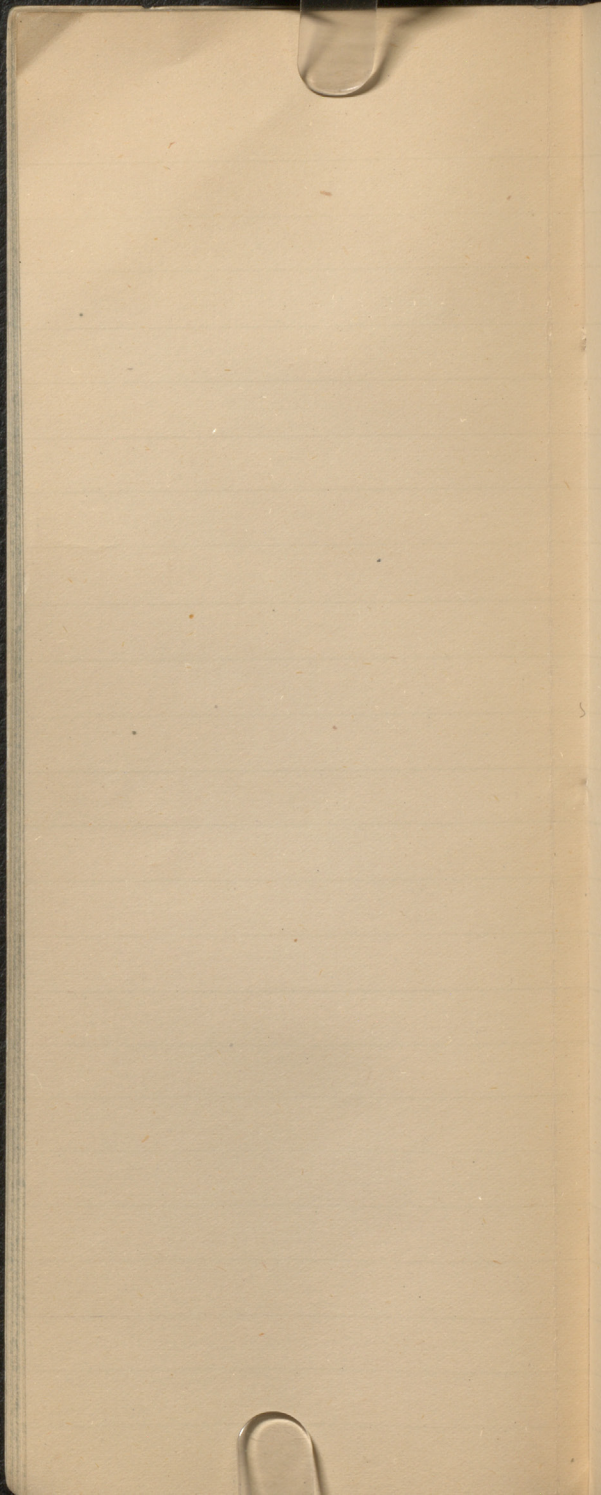
Boys China &
Schwe
&

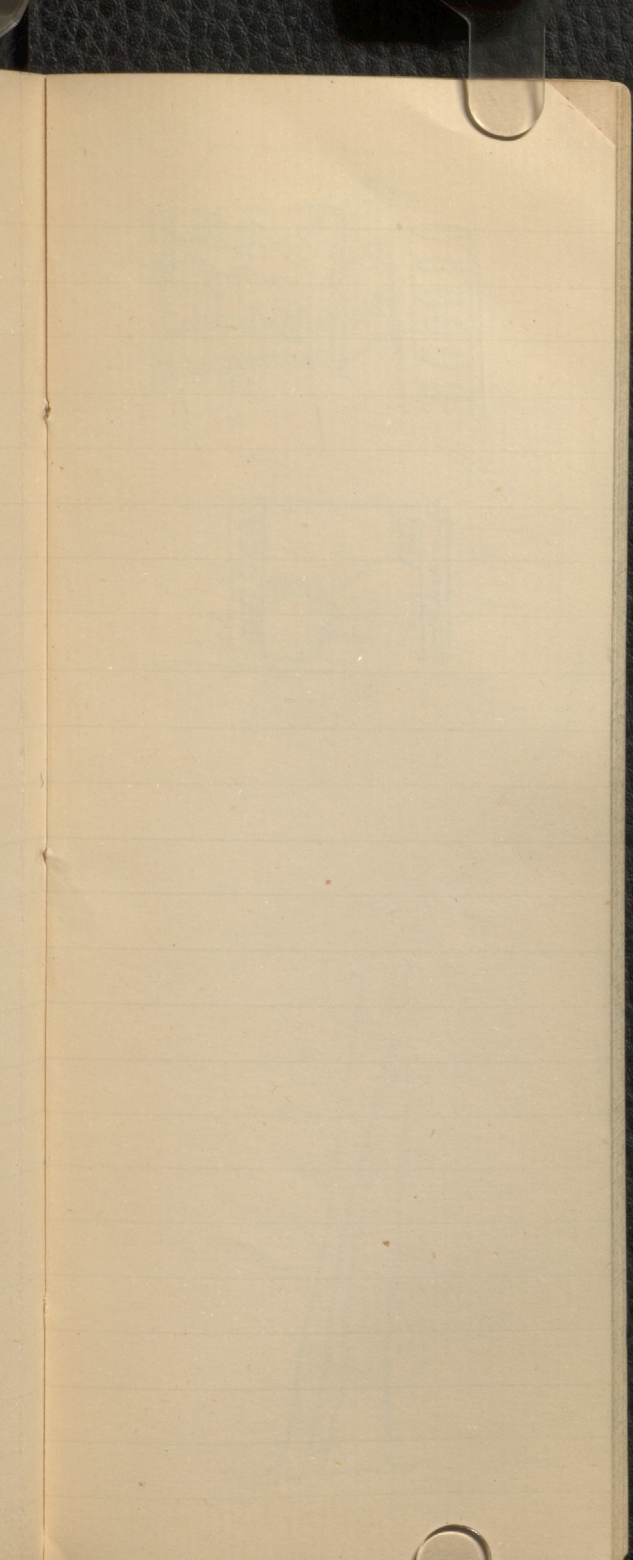




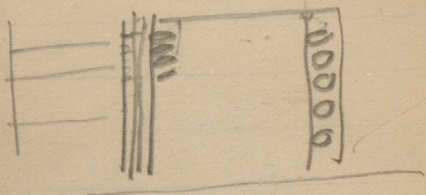
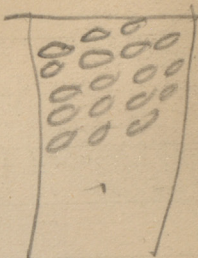


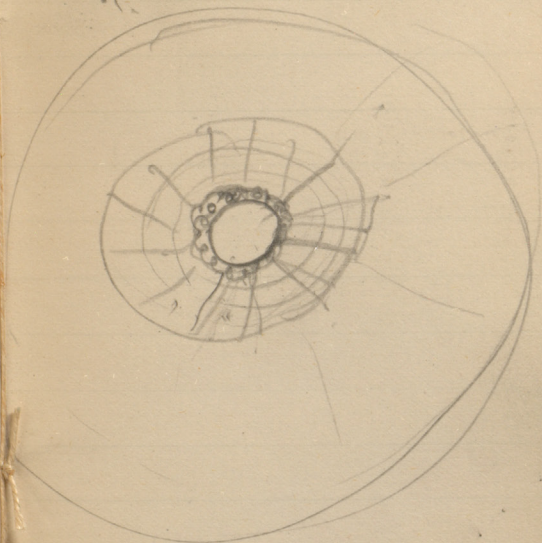
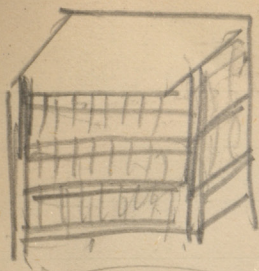






00000





Delana

obs cur

Duck

Shed

? of many
species

Franklin spar like

Victor Hugo

Wings of a crane

Pauline

Alman

2

✓

ing

liby

ine

