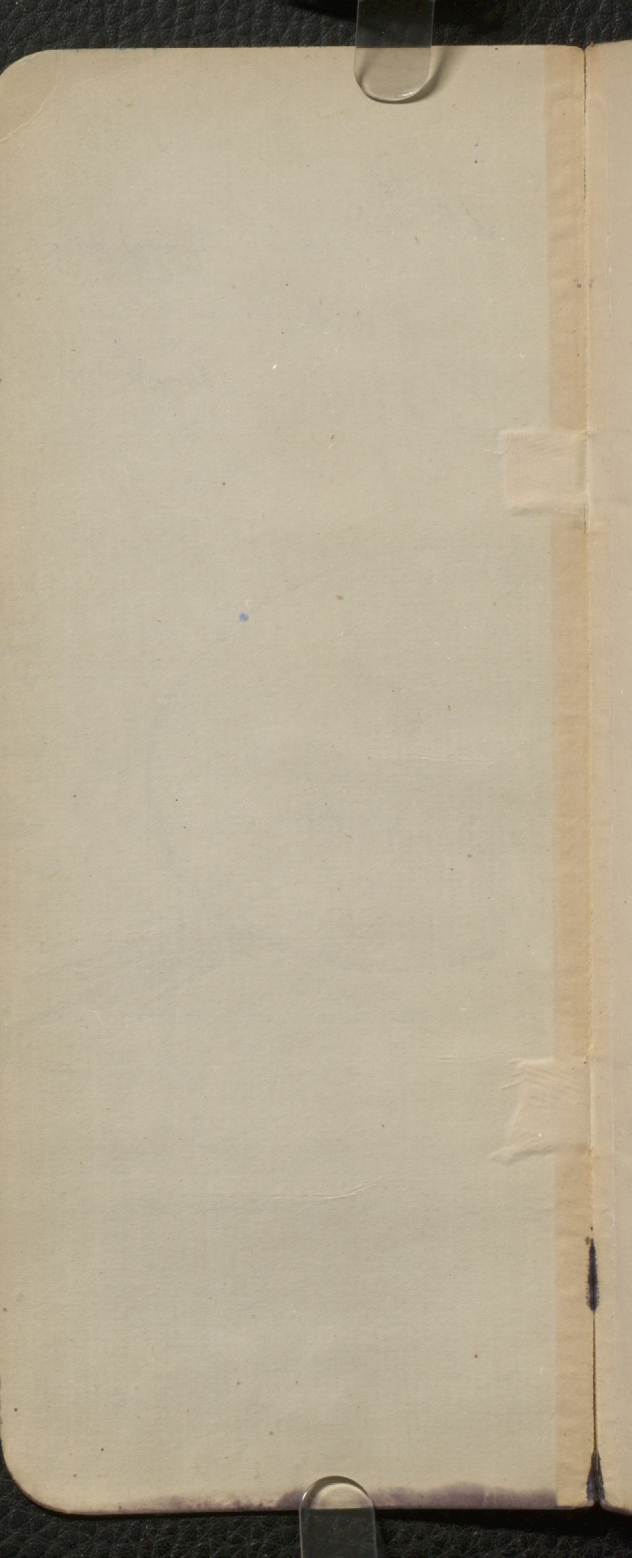


I

Eng & to
Naples
1884

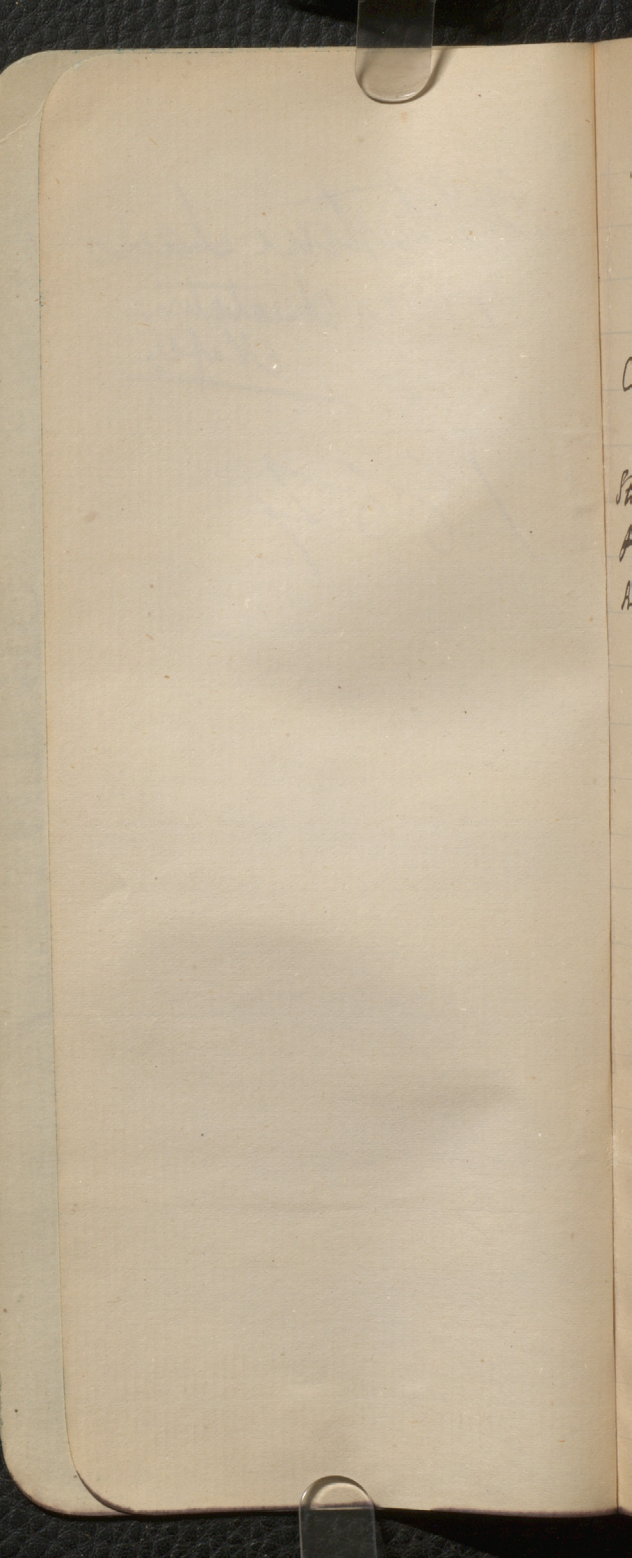
Museum specimens
of Willmann
Notes.



D. Whitney Lewis

27 Va Cheatstone
Naples

1884



But of the Southport
Sept 19 1883
& Sept 26/83

Cayley president
Jaw Cooper, Bury
Stokes, Willmott—
Percy, Lankford, Thomas
A. W. Thomas Jas,

Paper Exam
Address to local committee
Address final meeting,

Squaring Park
Widderfunder, Adam
Funder Sands
Streets, New place
20 years

List of the Books

Land Name

Some

McDonald

Driscoll

Duncan

Shannon

Houghton

Hunt

Map Canada & Gulf

Reports Maps & Geol's

Summary Canada Geol

Journal of Guide Map

Journal illustrations

Requirements
Mutt

Large Reception Room
Secretary Private
Office, Genl Com-
Mutt Room
Office Com Room

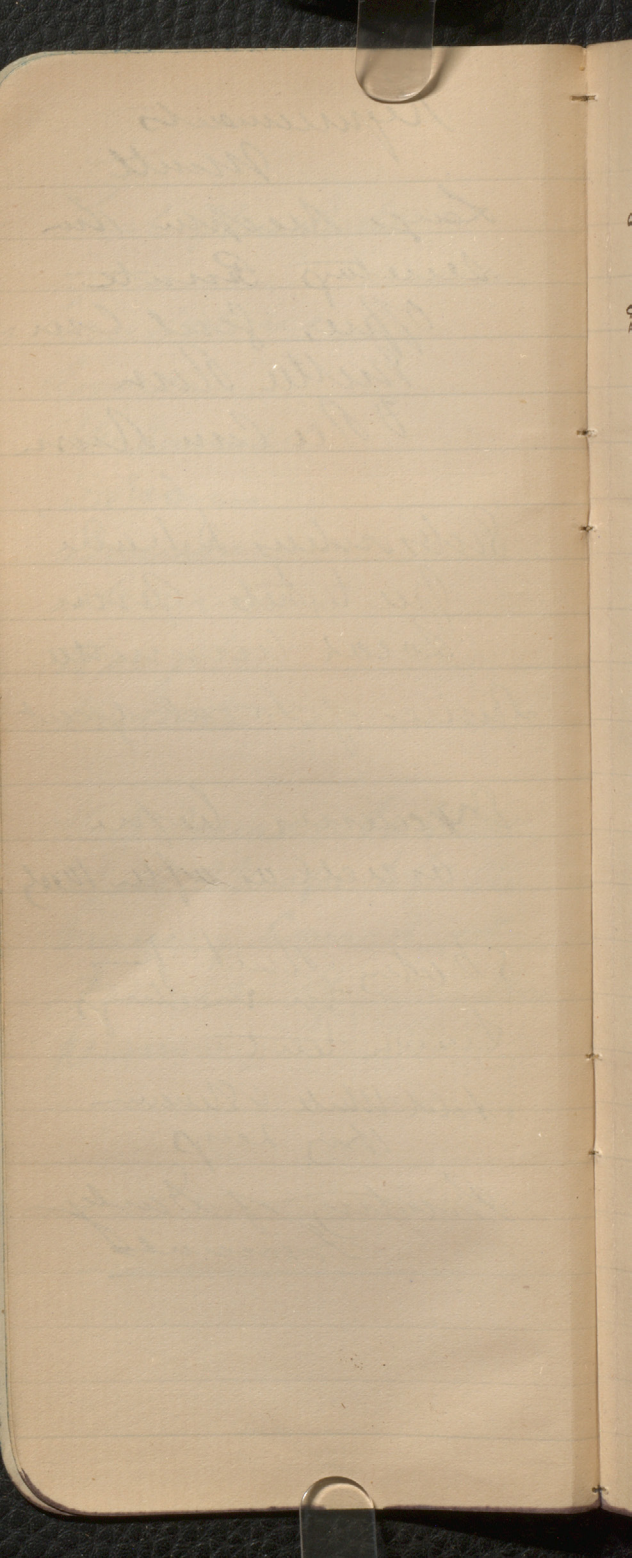
Subscribers to have
free tickets from
Local Committee
Services of Social agent

Discussions before
as well as after meals

Sketching Club for
in meetings
Lunch tent

Hotel White & Newman
City Dept

Printing of Daily
Journal



Chertea — Sept
Roman Hypocaust

Cathedral Roman
16 cent. Egypt —

May chapel Chapter

have church — res.

locatus, Old Bible,

Museum, Roman

altars & tombs in

Samian wall

XX legion

Imperial Hall

Phenatt Bridge =

Sheet, old

of the

Position of sheet

Roman wall

in the

rows in cloistered

streets,

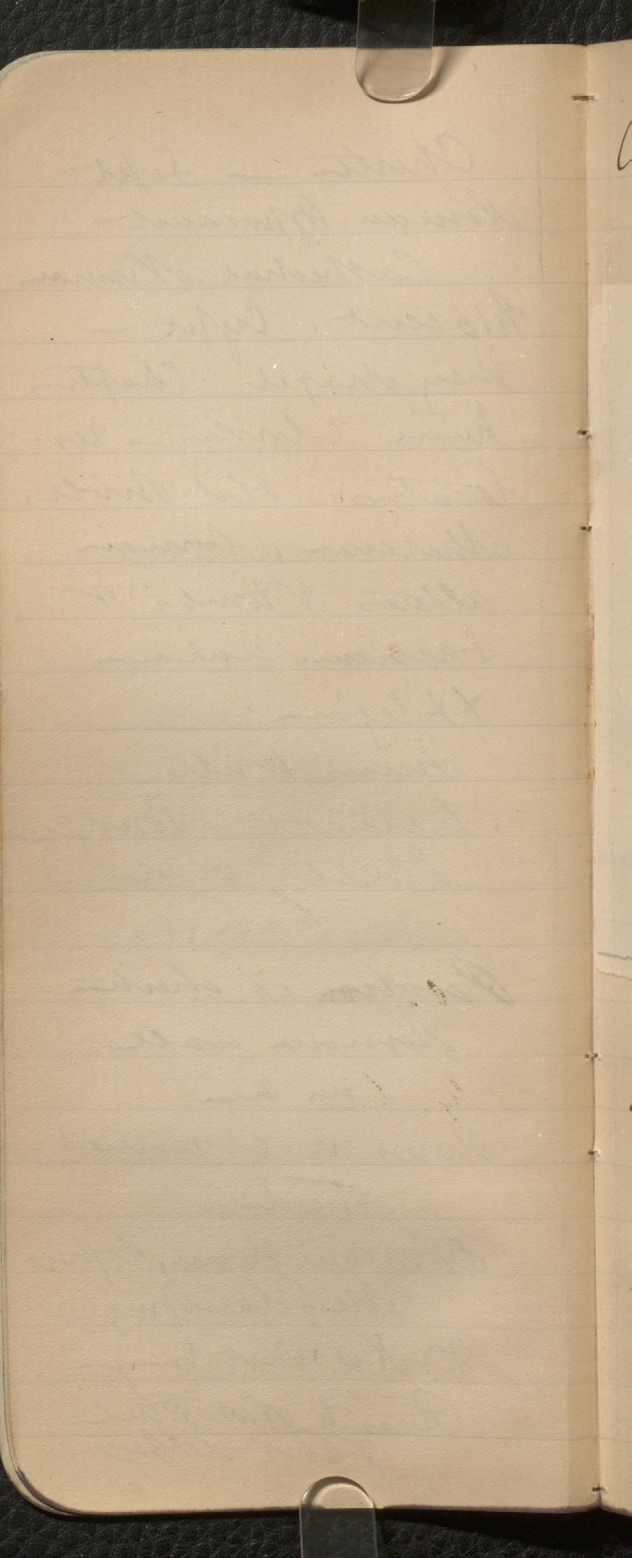
Saw the Henry Hoopes

Map Handing

of the West end

Plans to the Phil

of the slopes



Oct 1, 2 Foot Thin
Mus. v. ch

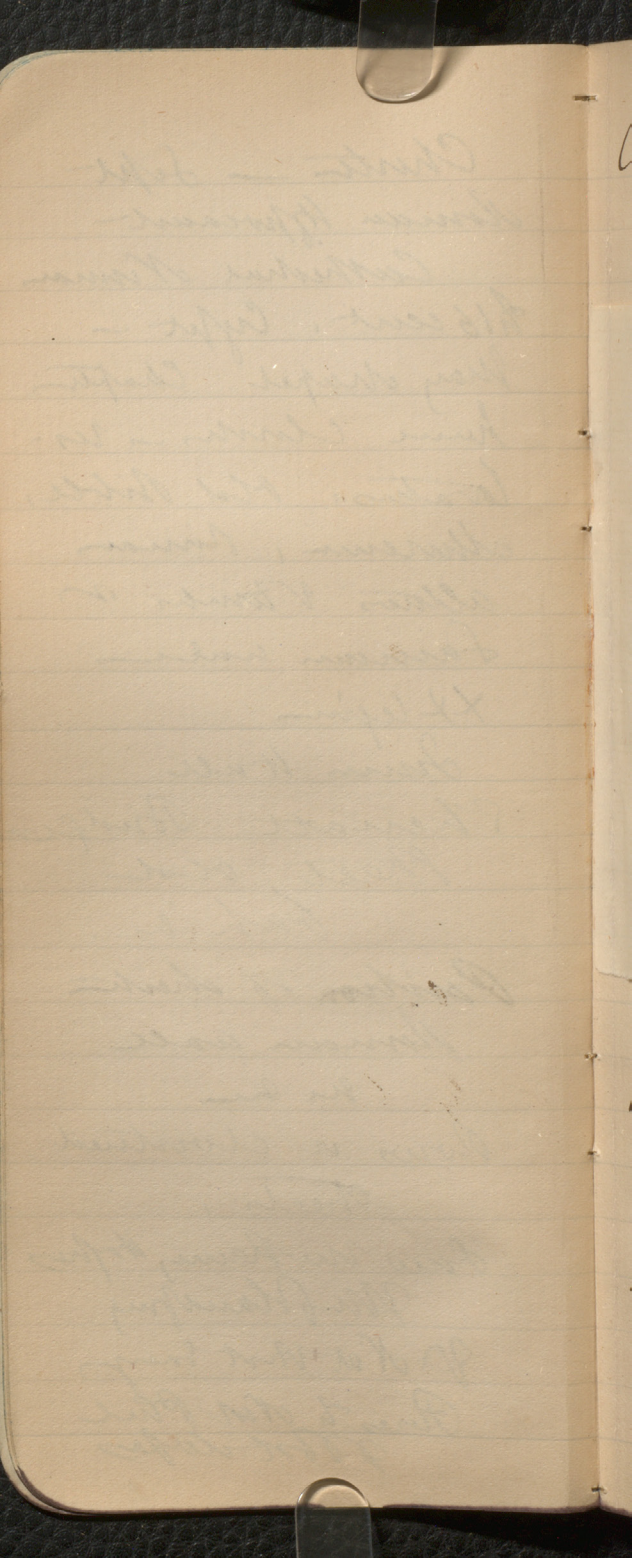
Mus. notes

= stearthodes.

Very clay bones
to be cut and
polished
Large curved
teeth =

Bulacnodon pygmaeus
oides.

? Teeth of *Waters*
Bones of Wholes



7

Museum Notes Boulton

Sabellaria = Mariner's worm tubes Boulton

Delapana implexa = thread = tube

Solidaria angularis tubular

Oncaster = spined starfish

Colinus esculentus = large mud tubes

Small imperfect tube = of ephebes

Cerobola degener in shell of Linnia pica.

Fund. Crossed
with cream

Sedulana be a
black paper

Chiloputtes has
small heavy
hairs
this



L'École Normale
needs more
sun & more
with a canopy
see

New City Centre
buildy with
colonnade

Septed from roof
but arranged
in the gallery
on walls and
projections.

Shells in tunnel
old L'École
de la langue ready
more full of
purple,
perhaps 4 or 5

Great Japan crab
Macrocheilus
Keenipteri.

Long Run
Note Labels w/
Capitals & diary
specimens with
specimens

Warbler Sarcophaga
orange bands
specimens w/ Zeolite

Apryl cases in middle
of flat with some
below and stop
shelves

2 of can have section
on by cases

Stop shades with
specimens
on top

Atrobelia = my
stud skinned
Aval

Oct 2, Owens Col
Manchester

Went to opening of
New Med Col. Ganges
Lecture and gave
account of great
progress, new building
New staff, Nelson
Museum - appeal
of Manchester School
of Med & Manchester
Ladies' Col
New Museum to be
soon

See Substrates
by Prof. Clarke
dynamics &
gas engine
Electric light and
various measuring
instruments

\$3. members

in Lab

Watson
Gerry

Pocillopora aculea
is fine branched and
of brown with thick
sclerites

Tubipora rubra =
large red spines

Pinnacora = thick-
barked gorgonian

Euphyllia = big large
about from Boston

Suffaria potentillae =
coarse pipe-like
spines

Holcentron, Thompson
= *Phenacocoryne*, Leidy

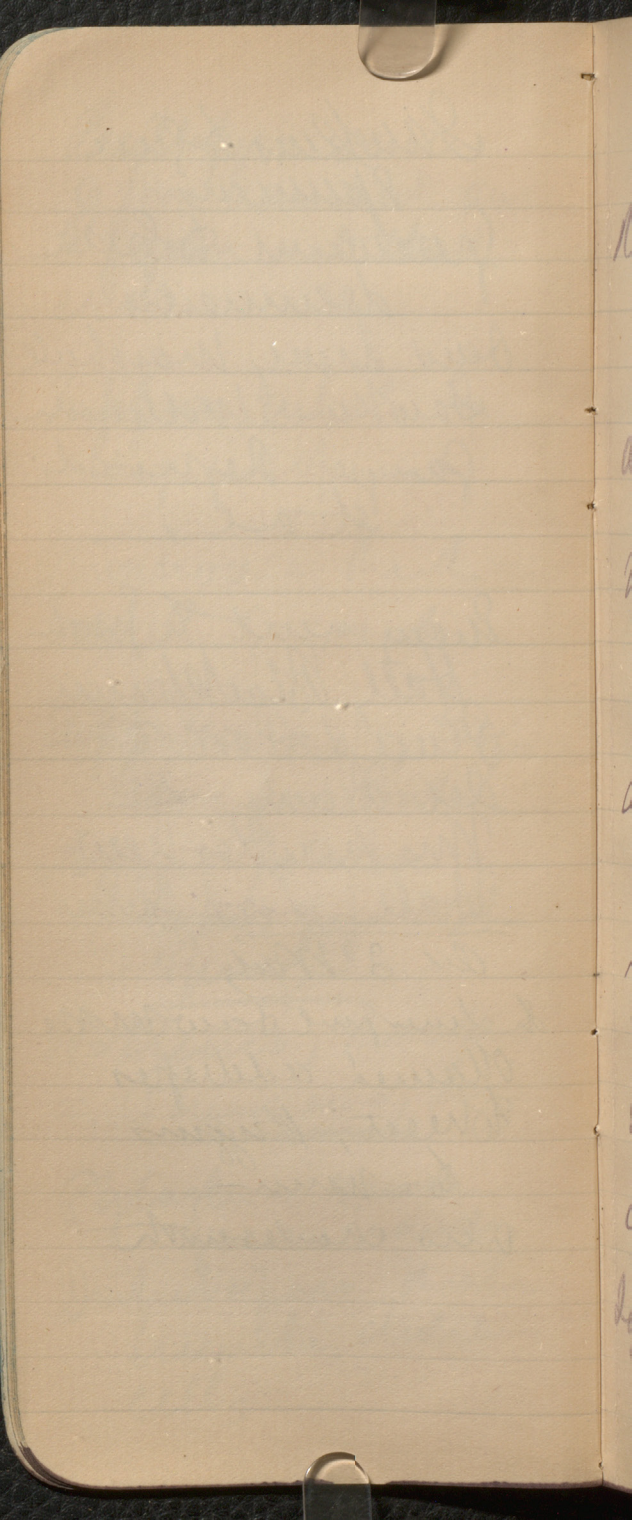
Syllactis = slender
~~spines~~ ~~branches~~

Dendrotopora thick
beams, delicate
cells

Johnson & Gurn
Specimens
Preserved & Gurn
documents
Saw Anne, Marshall
Johnson, William
Gangee Reynolds
et al,

They went to York
Hall, Blackburn
Place & Port &
see opening of
Mrs Newtons New
Hall of Lord Cairns
at 3 Wed

In Liverpool saw more
obtained addresses
Wheat, Huggins
& = name
also Charlesworth



Oct 4. Thursday

to Oct 8 & 9th

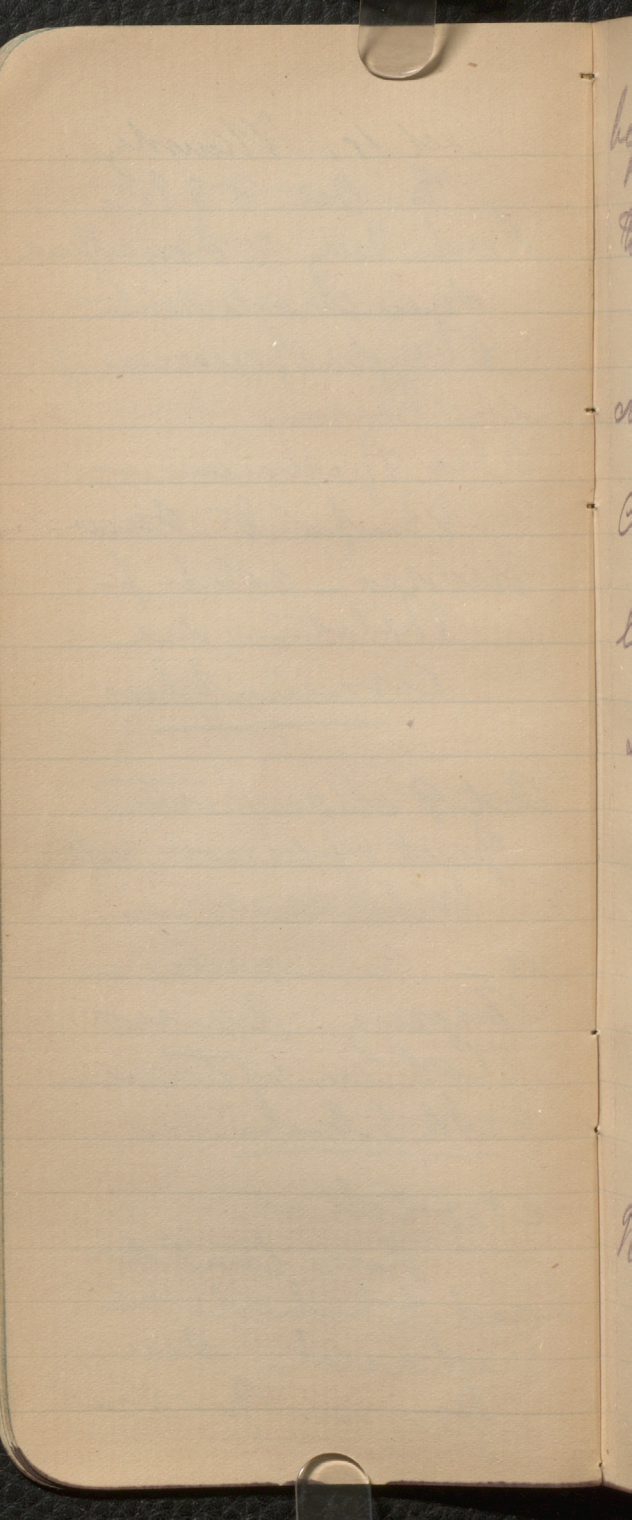
New York & Liverpool
Saw characteristics
Kryphi specimens of
him

Also specimens in
ships & saw
bones - establish
Skeletons see
Arcturiplex

Oct 9 Manchester
Spent afternoon with
Willowson

10 - Columbus &
Murray Owens
Col in afternoon
& M. Schell

at school
Zonal building
Laid & looked at
display - saw
from pier



beginning with copies
of simple solid forms
to our primary for
life and
designing.

Modeling also a
baseline

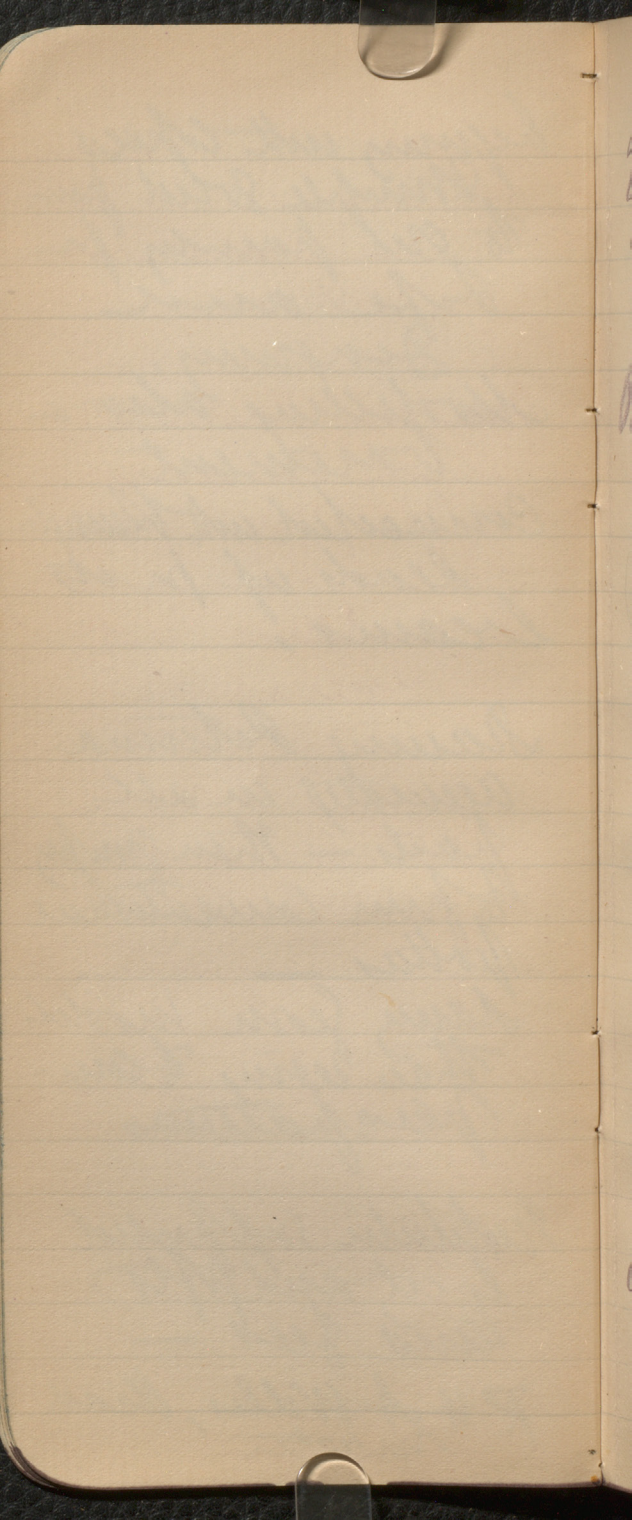
connected with design
leads up to its
beams.

Designing Petrus
accurately in all
parts - then jumping
to form conventional
patterns -

same form models
then using to form
pre-patterns

Modeling supported
by cut and soft
hand feet -

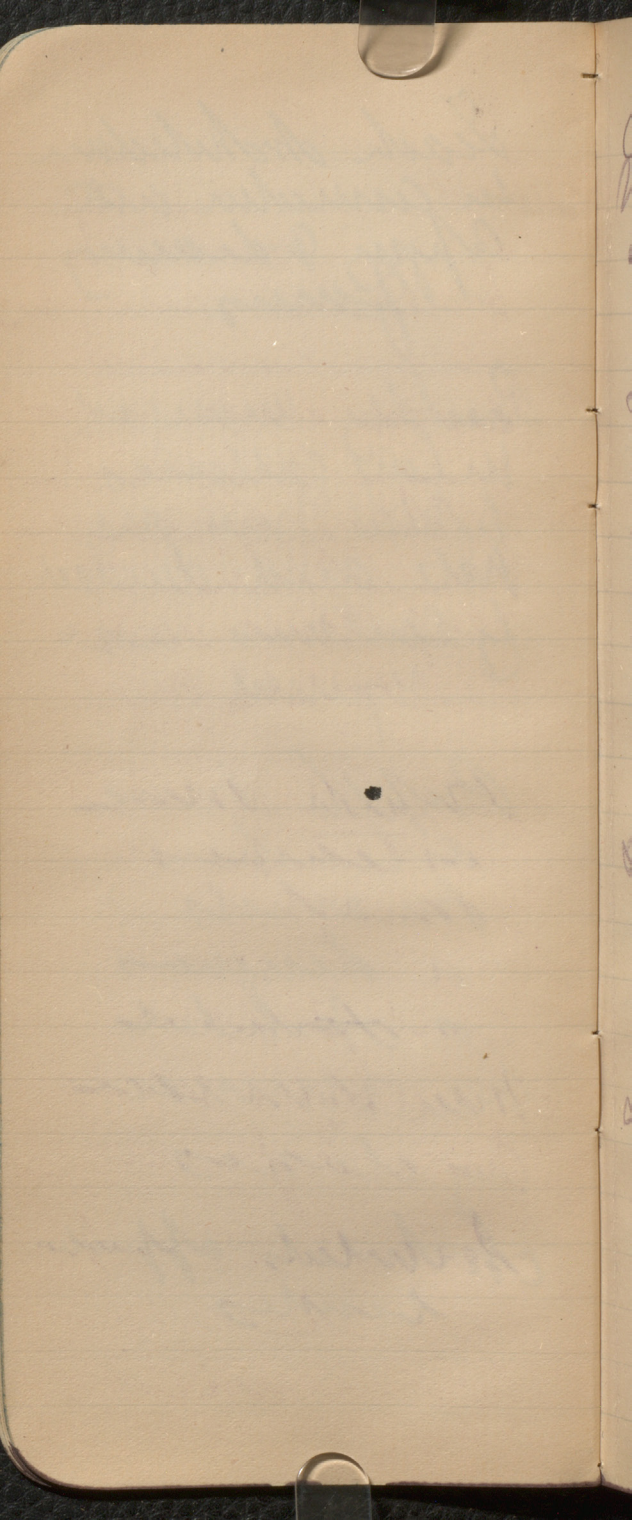
R# A. Weller, Head
master



Teach Architecture
in connection with
Apparatus & drawing
Papers

Buildings arranged
in long galleries
lighted from one
side and divided
by curtains as
required

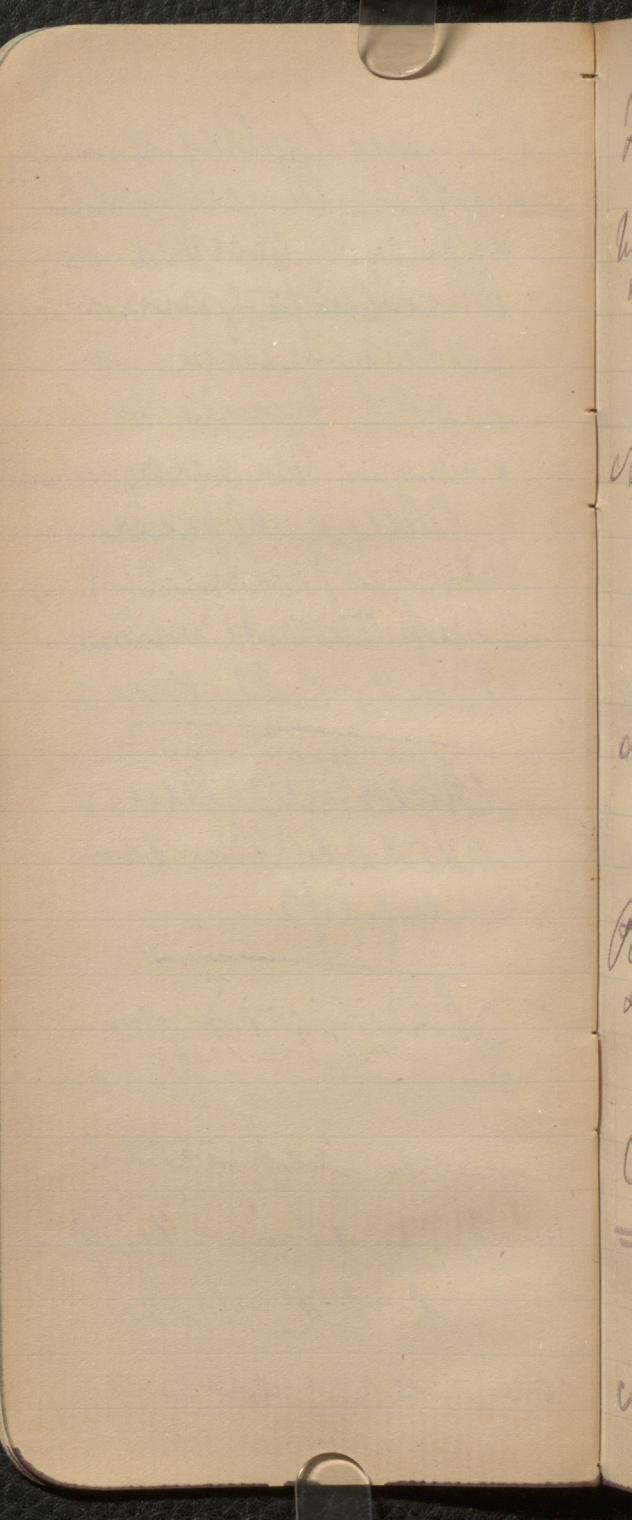
Pupils some
as teachers
for adults
a department
in Architecture
Men Women
day classes
Architecture apparatus
lectures



Queen College
Note - Principals
Office, Rooms for
Residents given to
Eating room =
2 old houses into
one - managed
by college office on
unresponsibility,
Clap rooms with
seats like ours

New Museum &
Laboratories in
progress

Museum
Jaw bones from
from Cephalopod
Quartzite cups
look like broken
vases



Flint flakes = knives
used for fish & etc
Upper layers have
sawlike cuts
etc.

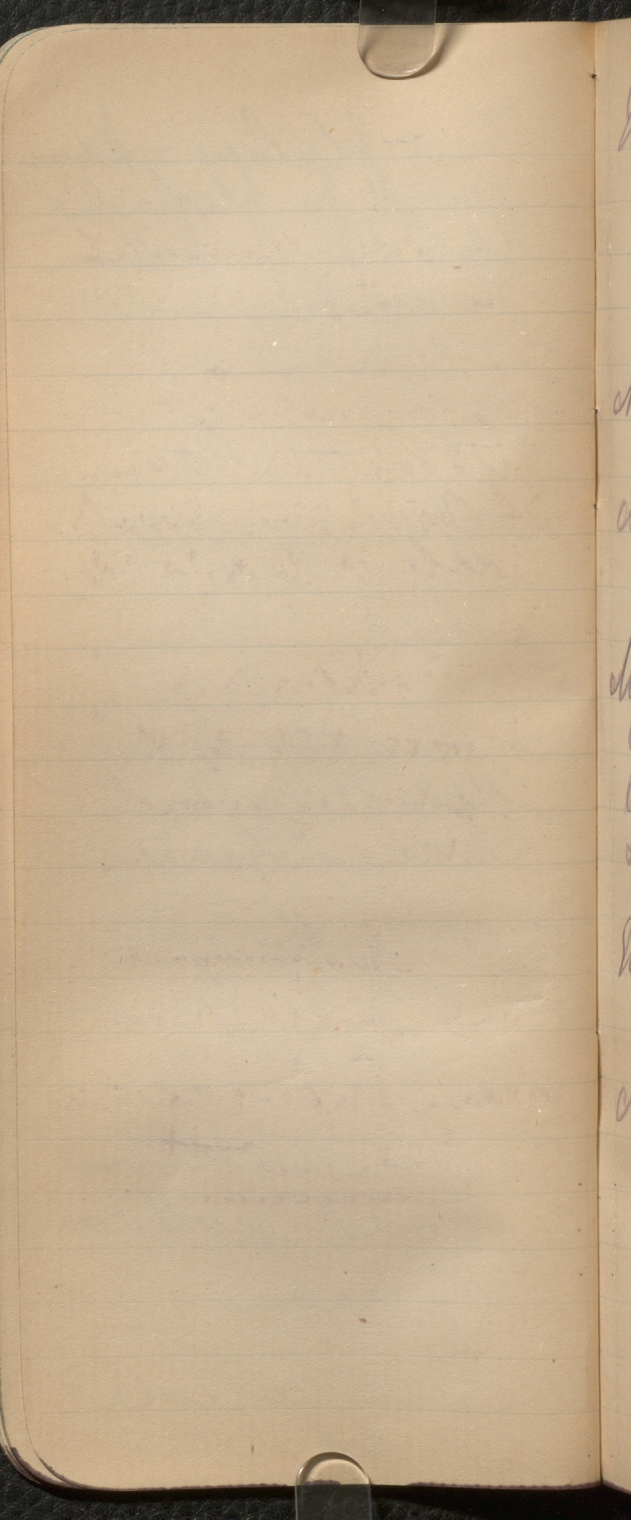
Anthrobutus Pteronurus
of New Guinea
very large skulls
etc. ? of same

Megalothus has
quadrate head
sawed scales

Hemucanthus FE
said to be same
of Diploodus

Caelacanthus
= round hollow
spine

My Wealden scale
= Lepidotus



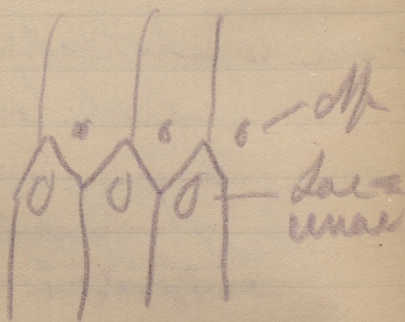
Thamnatraea arad.
noide, Coral Rag
= my Maent
Coral,

Shumway Farm
worked in bail
of Cryptine smelt
in bail & deep why

Mining hammers for
Copper mines of Grey
edge similar to
Lake Superior

Red Lepidostroma
in charcoals one of
Many Tyrone
Red Depth

Calamander
was under very
same than system
a paper -
Bounded wood
with wood paper



Williamson Calamites

Has trunks &
stems

Stems show the
duller appearance,
hollow. Inner
sculpture of
the creosote
and into bark

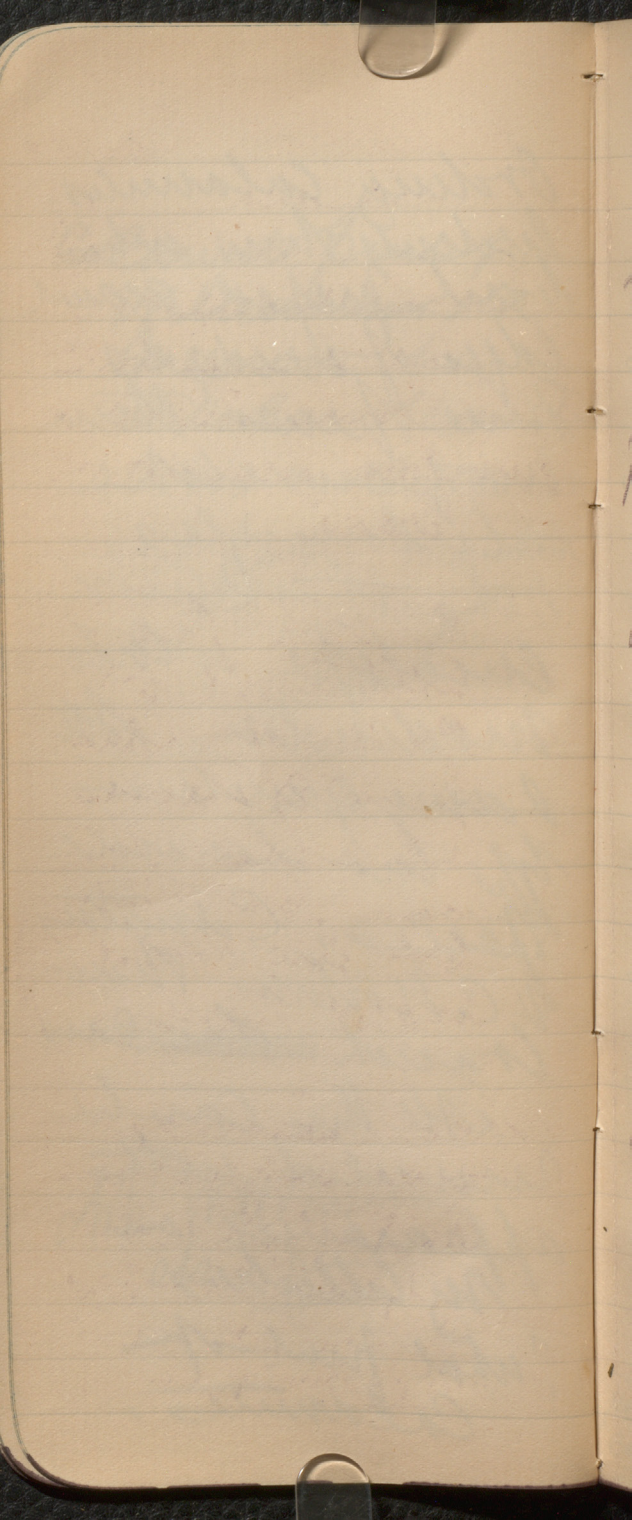
In large stems
1 foot diam. See
each 5 inches diam
the that bark
will part.

Stems canal
or lacunae
internal and
external spots
nodes. Repetitive
appendages above
nodes

Calamita found of
Williamson's old
Memoria has
a calamitean
axis in structure
old paper matches
Proceedings
1870

Ask Williamson
about prints

Ordering Calamites
evidently show with
back pressed against
edges of wedges
Some species thin
very envelope
= Calamites
others thick with
envelope = *C. m.*
moderata. All
same general
type but several
species. *C. ornata*
& *C. nodosa* from
Cranich ~~San~~ Seas,
All this can be
recovered with
appearance in
my collection
? what part of
Calamites.



Williams Lepidodendron

2. Selamoules
Wood tree with
small scars &
red fine furrows at
base. Like Pithecom
& other with deep
scars

2. Havocite fine
little wood at
one end of upper
seems to have
been large leaf
with induration
with long part
in old stem

Some pieces
may have been
Lepidoflois
at least branches
after found
with it

William Hume
Macrospore with ^{or sporangia} spores
Sporangia cells and
lungs - see his paper
also Hagnana
with abundant spores
scurvy below in
the outer coat,

also Sporecaps -
about the coat

Multicellular has
100 spore than
cells and
intermediate hairs
inner coat with
small bodies in cavity

Lycopodium has
internal ones on
back with raised ridge
and lateral branches
extending through it.

Woody spore has
multiple deeply
[scribble] outer surface has
elegant pinnules

has immediate
character of
wood the
development -

wood thick to be
large stems


Kauria is of this
type -

Myriophyllum has thick
but loose wood
with med rays
as to soft primary
wood like stems

Arctostaphylos new saddle
of petals (unifoliate)
of central bundle
and uniper
system -

with the curved facets
curved but primary
the hollows

x willow trees
about like Sphaer
phyllum and
Sobolungia; but
must be made
back

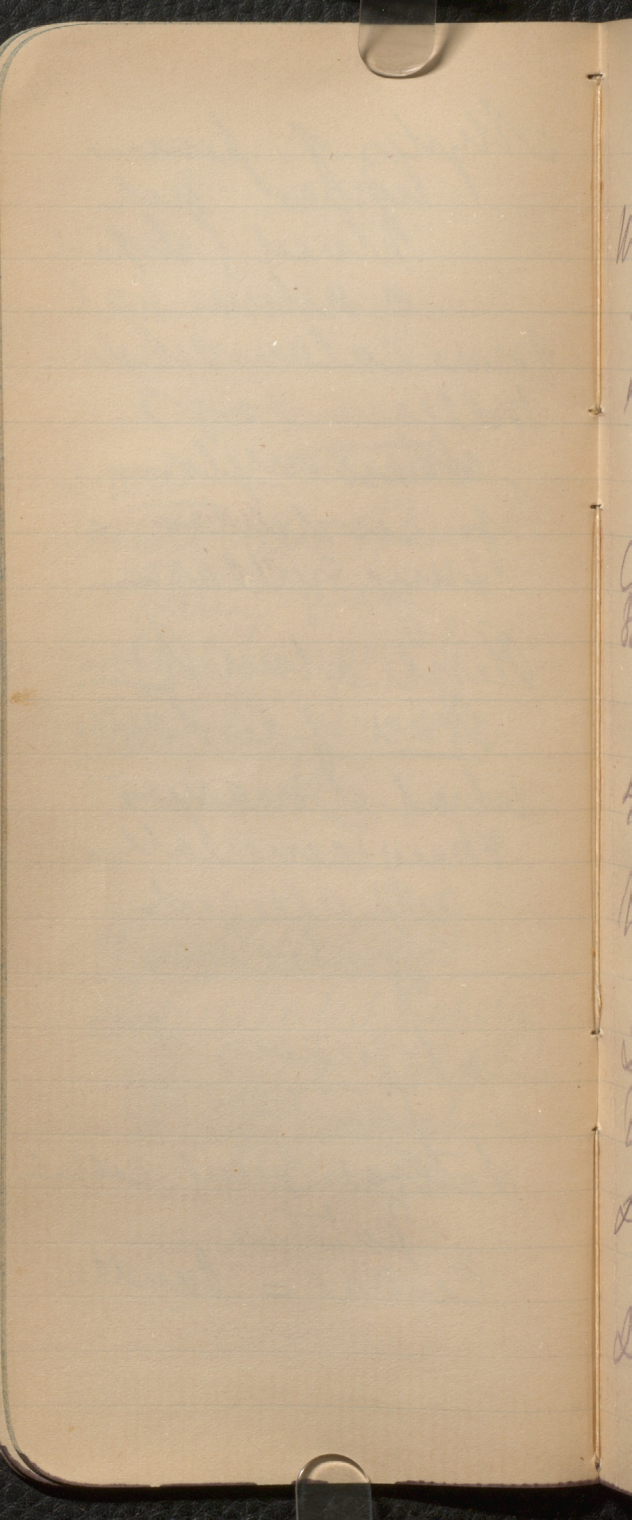
Strophylites has
reticulated leaves,
 such as often
appear in
Coal

Myths of puns
types not
blued & super
a return type
some color-coded
William says
chromosomes
of conductes +
my syllaria.

Recall about some
one of conductes
what it means
three connectable
with alleged
affinities —

See to means of 3
punctures

Lateral nerve cell
patches
Central = bundle



July 12th Oct

Women's College

1st class rooms

plans filled

Wofly but did

fulcrum

ready room

Curriculum

3rd class room to

be filled up

40 students by

today

Men partake

of three sup

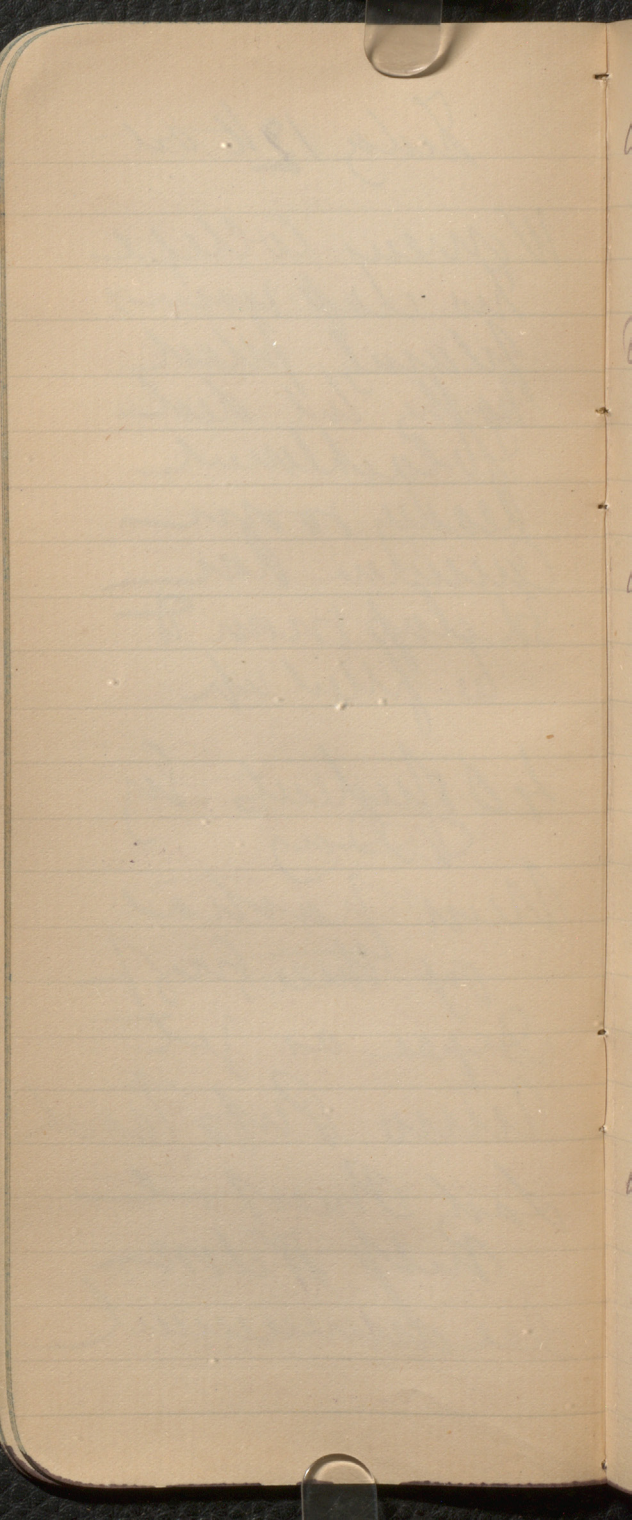
Supper as yet

Men Pups teach

Sad Pupil

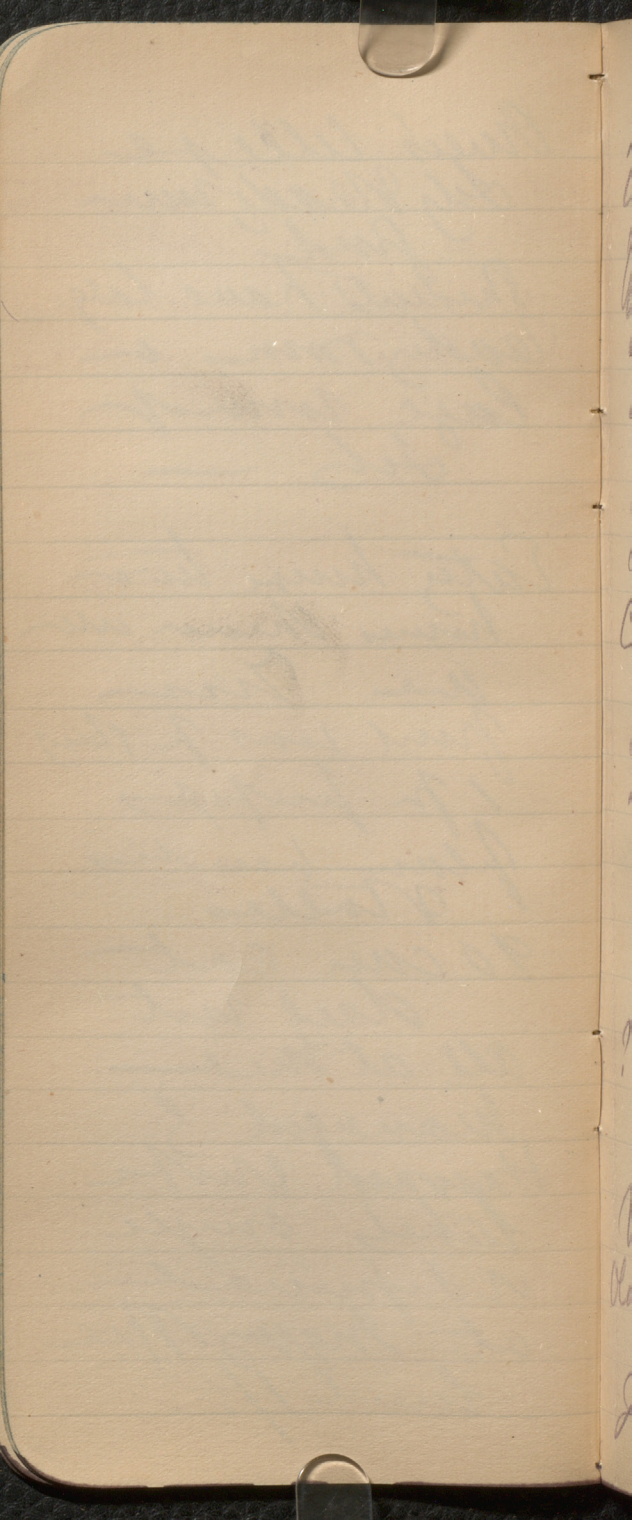
Pup Wilson

See announcement



August College
July Ready room
find
Students have large
ready room in
large room of
July —

Party house two
houses shown on
the map
first was for Aug
1 for papers
plain benches
stalls
90 can eat
dial not
all at one
managed by
Howard G. Wolfe
table supply
or deposit
at Ingersoll
level 1/2.



8
Byrond supplied
with beer & furniture
fuel & gas, furnishes
all else — This
is his advantage
over Street —

Saturday Oct 13

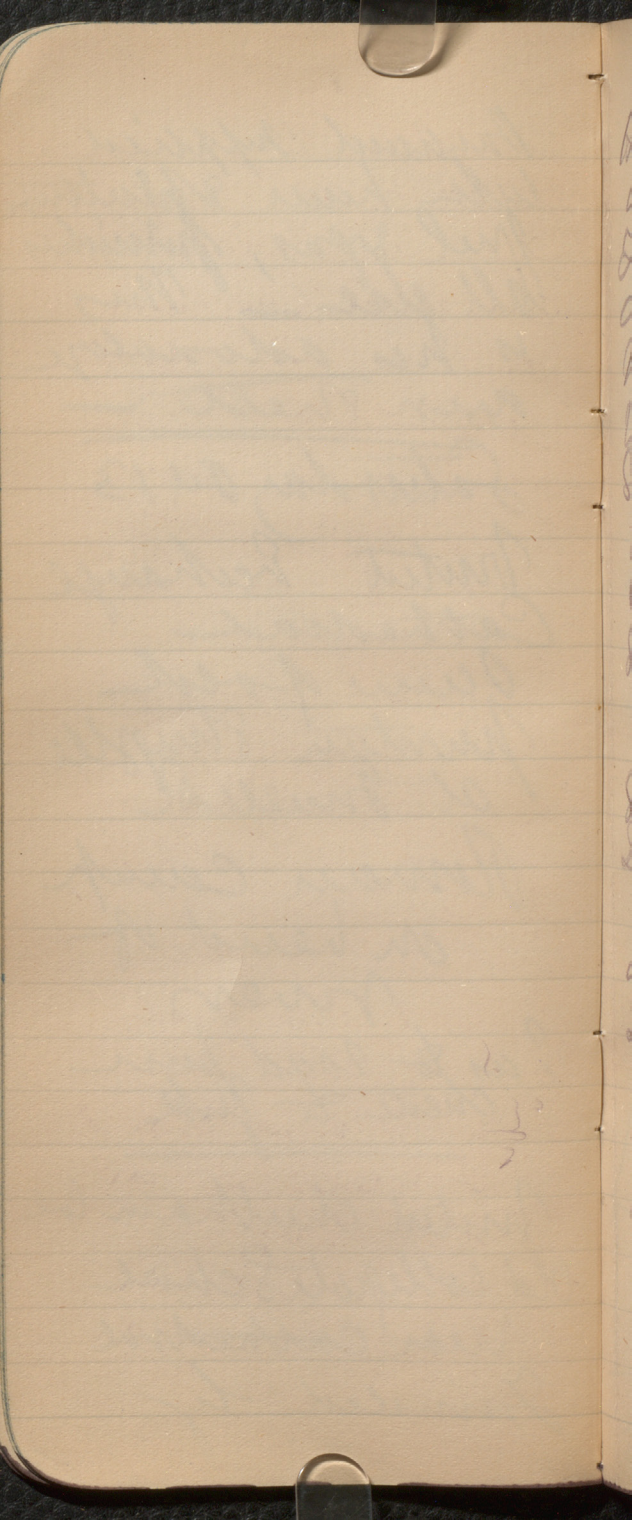
Visited Bechance
Cathedral

Scene of old
Protestant struggle
at Innes

Roman Camp
on head of
river

? as to road from
Chester to York

Visited Chesham Coe
Old Collegiate School
Near Cathedral
Founded by




Hamphrey Chetham
died 1655 at 73
Founded college
and library —
Now have old new
hall building and
school of 100
boys appointed by
City from families
and his wife of
Mather ~~was~~ ^{is} lady

Very grace
Dine with Hall
~~the~~
Moller of Chetham
Good turn time

Old building great
of stone walls see
some floors
old stables
of paper see

Upper levels near
Chauvin's Seabirds
& William Byrd Bay
3d series, Vol 18 p. 244,

Amorphous in
Hall has similar seas
At distance of
1 in of mud same
1 1/2 fine 
2 1/4
3 in

Monday Oct 15th
Madrid Seed

Went over from Marchant
to the city, visited the
Seeds Museum. Visited
the following.

Saw the specimen of
Asimina triloba as
said of Lepidodermis
John Williamson has
cast

Remarkable specimen of

Dr. Kempner, seeds

at top of steady
& bulb below

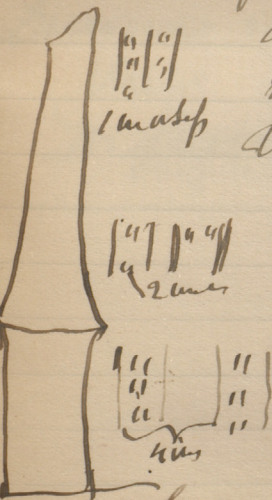
Other glands
with markings

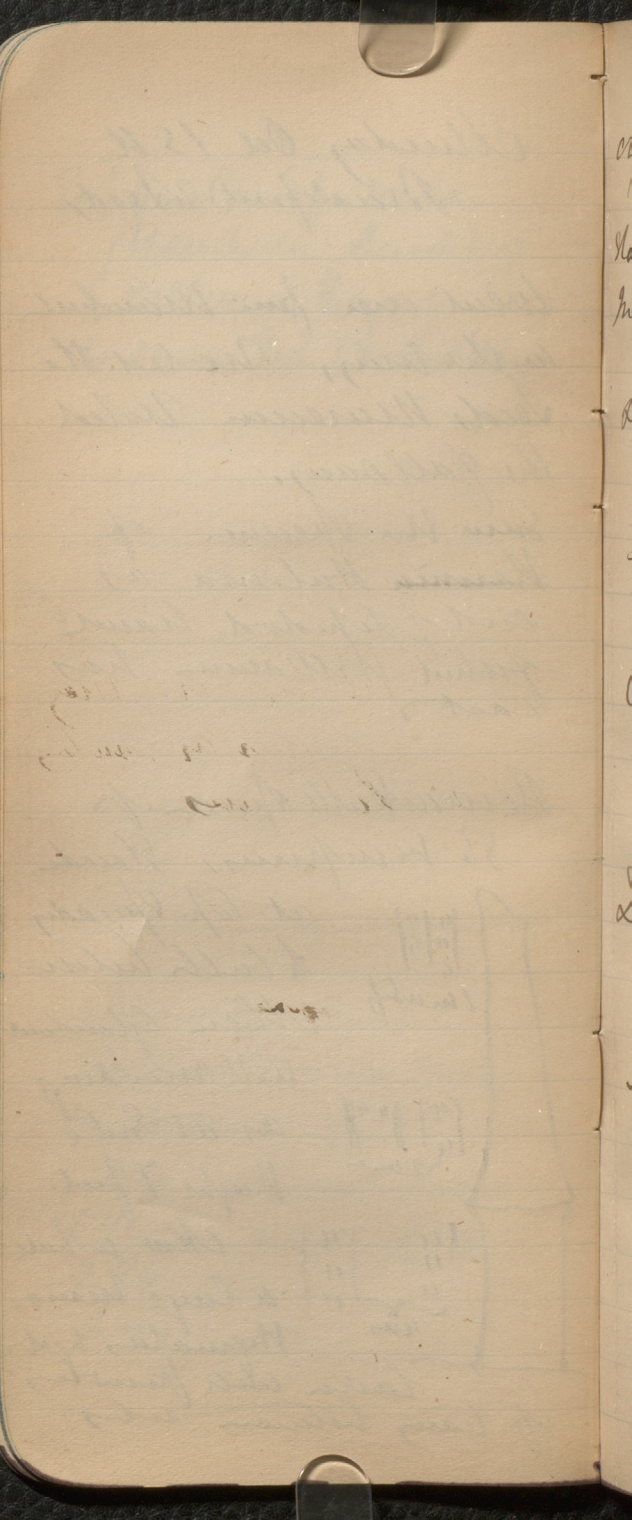
as at side
Depth 7 feet

How whole

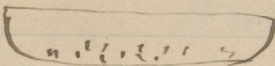
a large mass,
the material is

lamin with powder
of leaves between ribs





the orbit of the eye is
marked *Gartia explanata*
sharp oval is *Ophioderma*
in each fin. Any teeth
as added to the gullet,
some jaw of *Neptichthys*

The 

Scales granulate
throat smooth

the Roman fish may
be *Palaeomus* *lunatus*
or *Pelejus*

Diurus with short
throat *Tarsus* 2
~~*Dr. Phelipha*~~
elephantopus

+ Annun purchased for
lectured collection of
some objects collected
acquired here with exhibits
for India

Bradford Technical
School,

New Building put
up it and by at-
traction as well as

substantial - admirably
fitted up. Work-shop

carriage, pumps, steam
hammer - benches for
and pyramen making

who also attend classes
in chiselling, Mech Drawing
Maths, Decent

school of weaving, des-
igning & dyeing. The

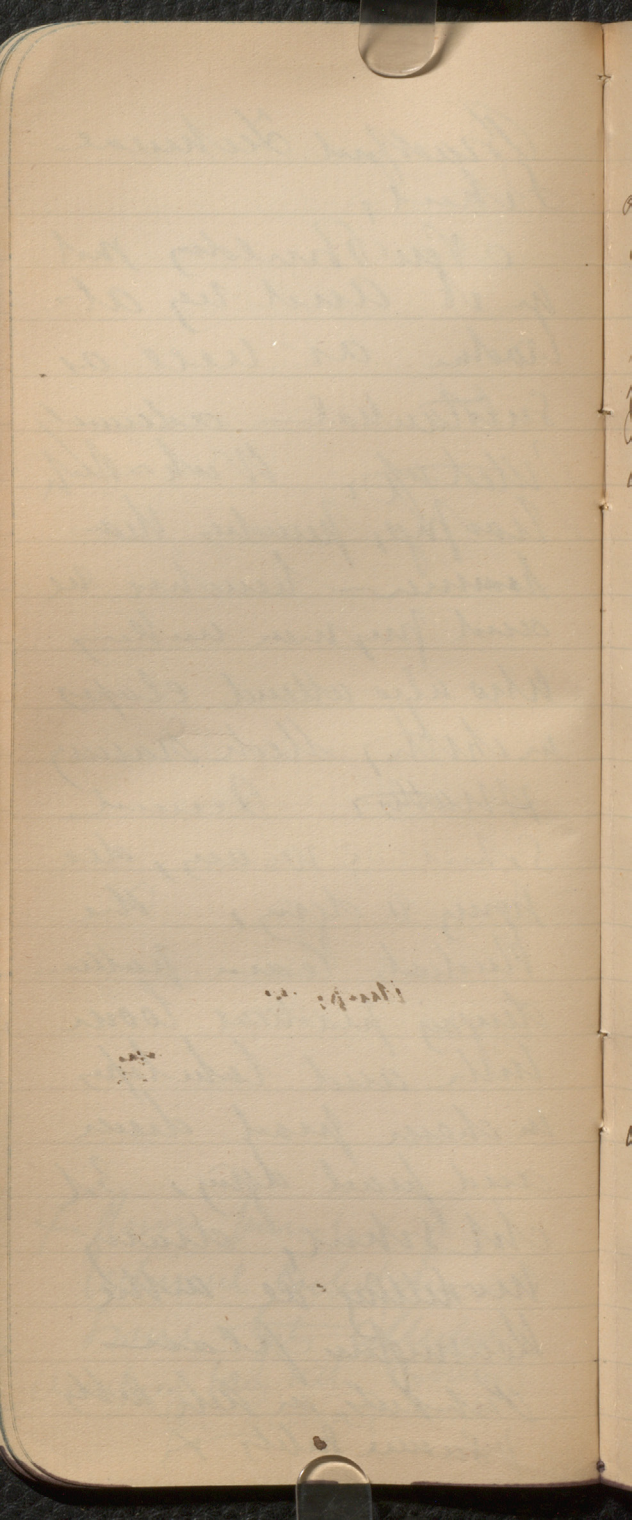
Students learn pattern
drawing practical loom

work and take lessons
in chem practical dress

and practical dyeing, 3rd
class school, drawing

modelling &c on the
Kensington plan

Products in Tech Subjects
& Science Subjects &



11-11-11

11-11-11

On 16th

Visited building of
Leeds College on
Latter Yorkshire College,
at present the upper
part pushed to Lechnice
School of Day & Evening
about in full operation

ground was £17,000
Building will cost £100,000

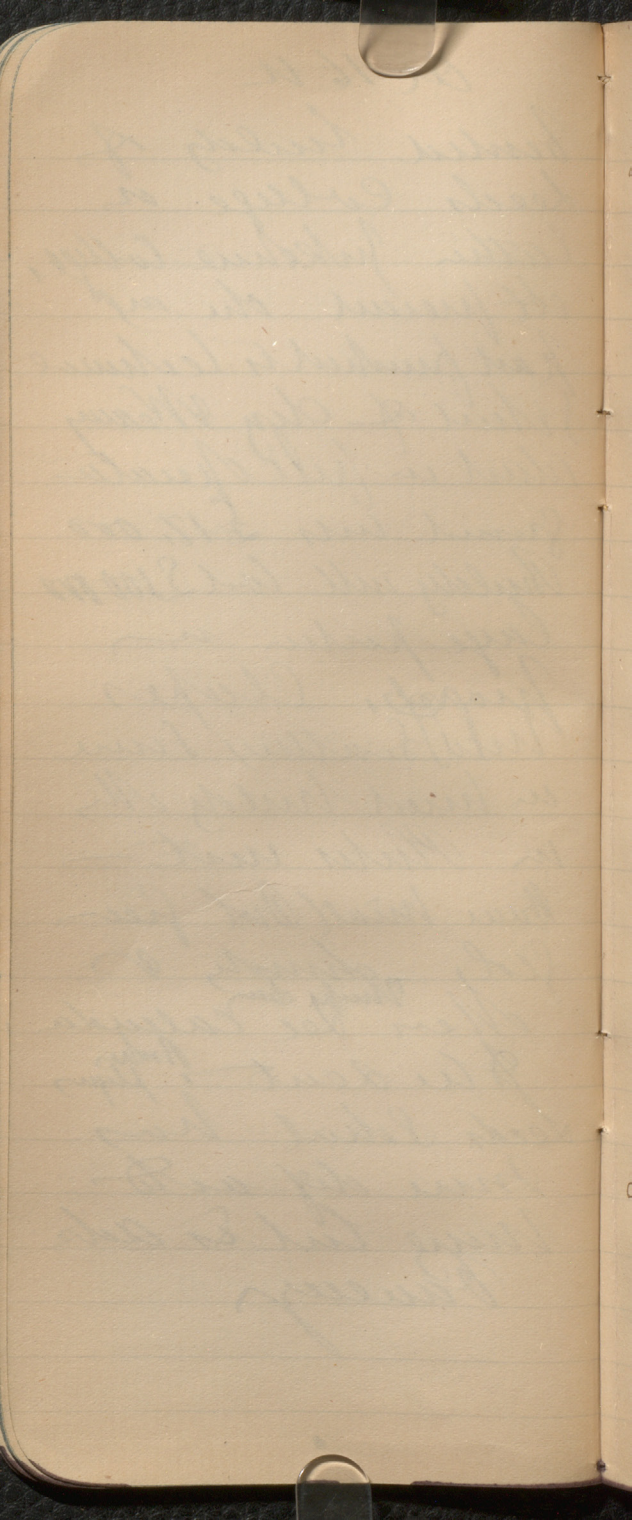
Large portion in
progress. Clapes
with Drattay some
on level building also
in Plum unit -

Have visited but free
led, ^{shirley} &

Men ^{Thrupp} Lee Calyda
to be sent ^{Proctor} ^{Physic}

Leeds School has
more defacto

very cut & adz
Dancey



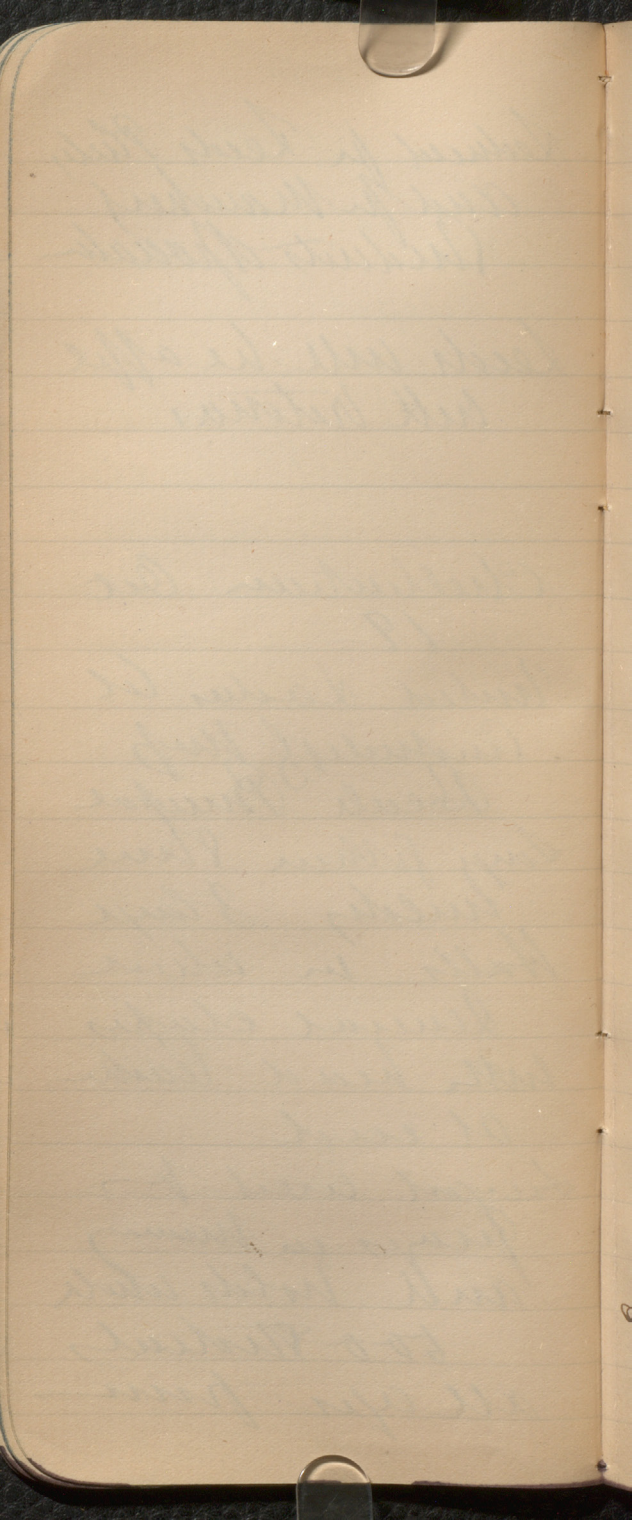
Reduced for Leeds Philly
and for Manchester
Students of Special

Leeds will be affe
with returns

Cheltenham Oct
19-

United Ladies Col
Circuit of Miss
Beale Principal
Large for the same
builds 3 large
Halls in which
General classes
with head teacher
at end

Large used for
prizes in morning
and holds whole
500 students
all eyes present

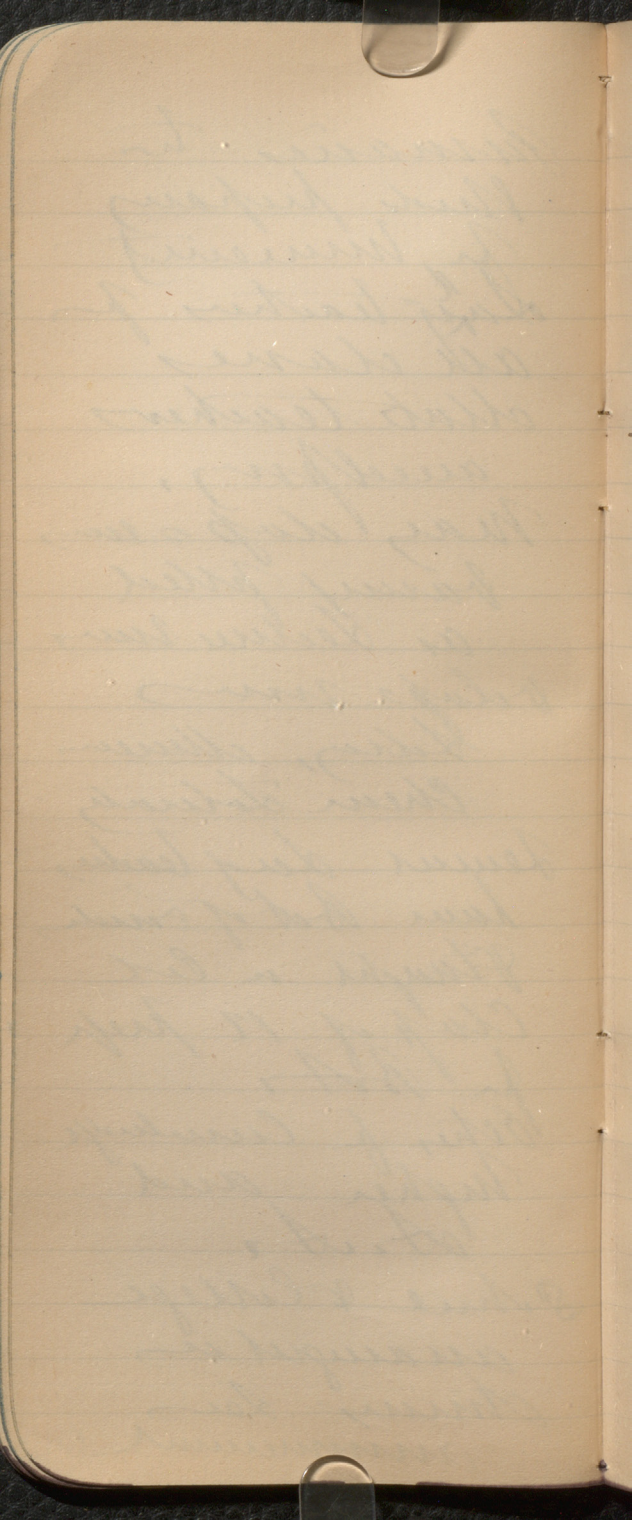


Summaries to
Students preparing
for summer
day teachers for
all classes
state teachers
accepted,
May class was
various filled
as lecture was
delays was

Saturday, summer
Chem Saturday
Senior day teachers
have Bot of course,
Staught in Cal
Class of 12 prep
for B.A.

Notes of knowledge
higher and
A.C.A.

John & College
arranged as
Miss Lee
announced

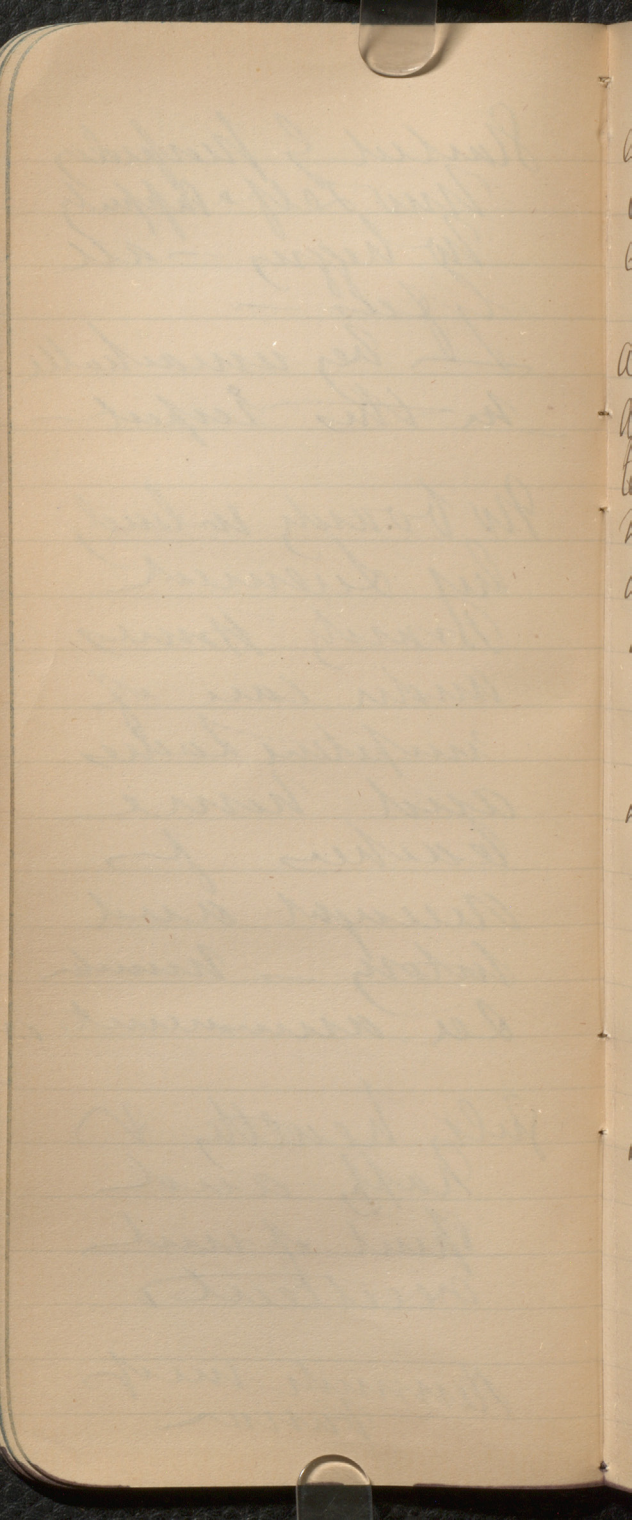


Started 9 Monday
New Self-Support
No begging - all
gifts -
I be unmatchable
in this respect -

No boards or land
by Science
Brandy House
Under care of
competent doctors
and home
teachers for
Account and
History - number
See arrangement,

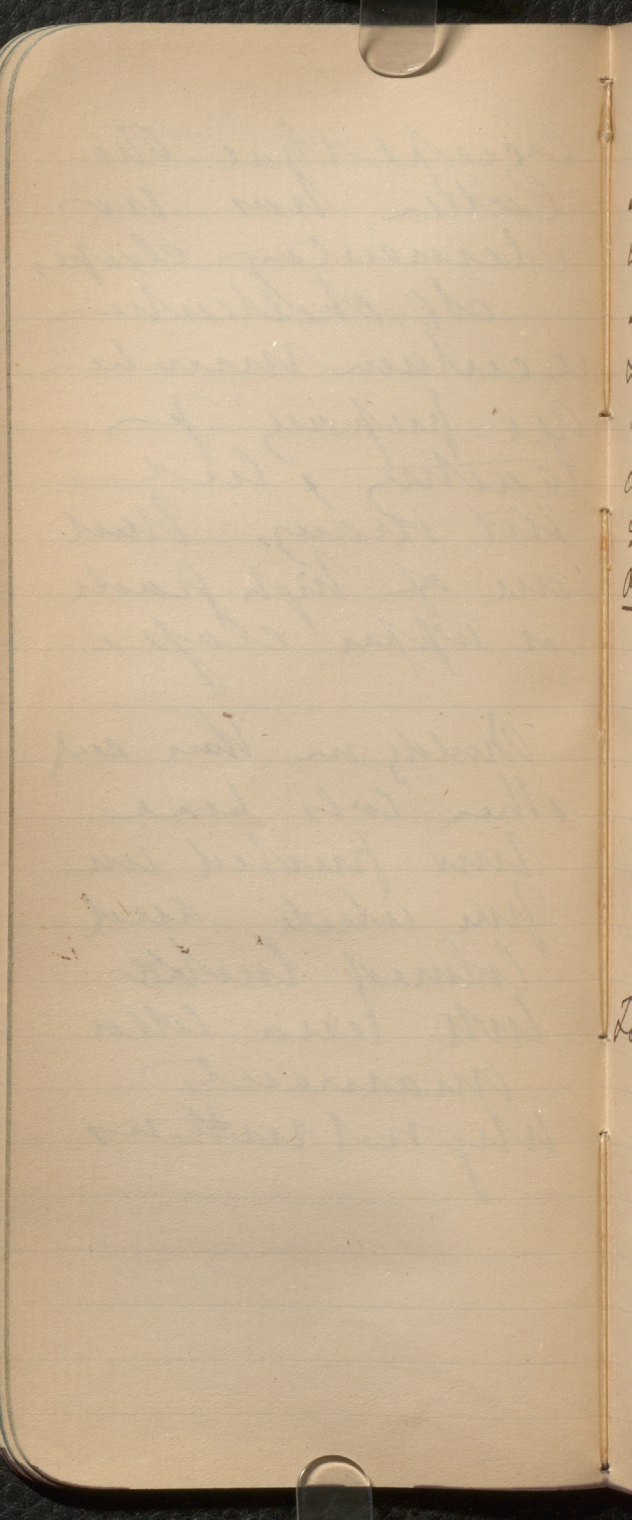
July health &
happy and
spirit of unit
recipients

Remind me of
Burr



except that the
latter has no
elementary classes,
at Chellur
a certain number
are preparing for
teaching, but
not many. Most
are of high grade
or upper class,

Builds in this and
other cols here
now putted in
pale white and
colored bricks
with terra cotta
ornaments
Wynnduttus



Oct 20

Visited NW part of
Commonwealth cemetery &
with Mr Wethered by
Rm on lawn visited
Lechaupstein Hill
where saw following
Section, hill being
900 feet high,

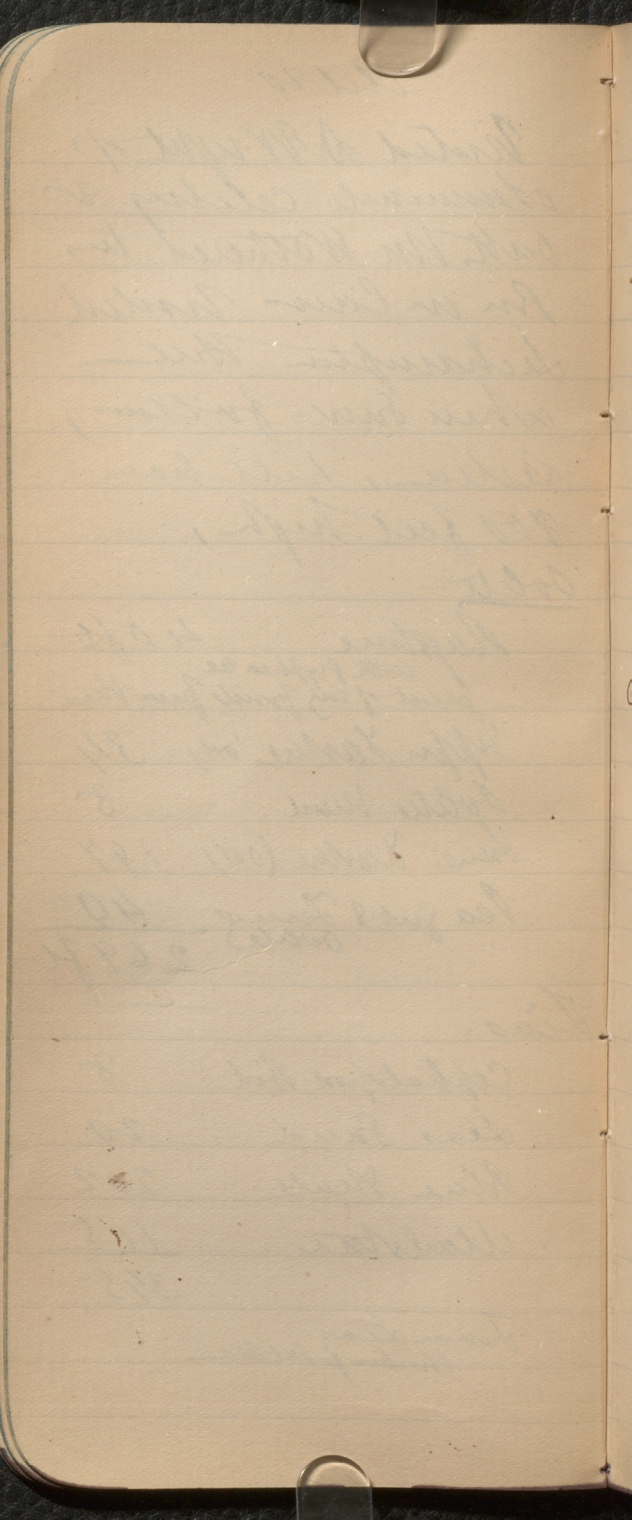
Outlet

Argentine	40 ft
<small>with Siphonaria etc</small>	
<small>all of my fossils from this</small>	
Upper Limestone (ool)	34
White Marl	8
Lower Limestone (ool)	147
Sea salt & Ferrug oolite	40
	<hr/> 269 ft

Lias

Cephalopod Bed	8
Lias Sand	20
Blue Shale	202
Marlstone	<hr/> 115
	345

Lower Lias
thickness of sec



Thurs Hill part of
Cullenolds and
first volume section

Synphea subloba

Fynice arata

Fulcal. fimbriata

see Wrights Memoir
packed with the
prints which were
sent to Moore

Oct 23 in Form saw Colman
& Murray

see 2 Bp into letters

At main town church

visited *Holwood Park*

at Kerton Common

and saw the rest

except as to Wilhap

after interview with

Att determining to

try some greater

before the Hope

Old venerable

& hollow Oak

stone seat with

uninterrupted

Silt

15 ft { Sand & flints
 Layer of sand & silt
 Gravel many broken flints

Chalk

In some layers were
 broken flints as
 if surfaces in which
 broken naturally
 shapes all sorts
 like implements as
 axes, etc. & pieces

Pithecolobus B
 Larva Combes
 La. n. Pithecolobus
 marked Sabraonius
 brevis

Set up of Fall Staube

Visited also gravel
pit near high clams
where saw that
gravel and many
broken flints like
implements. Bones
of Elephas and Bos
found to be found here
in gravel.

~~Wed Mundy 28~~

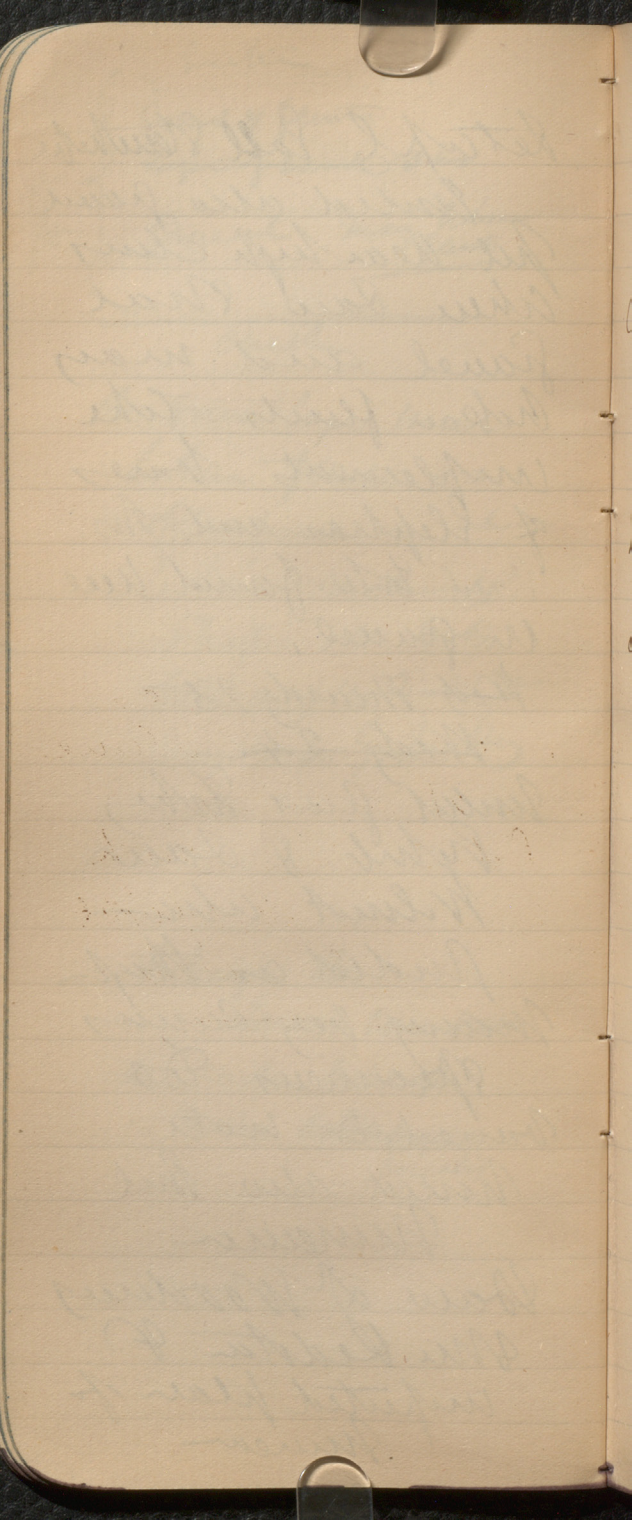
~~Wed 24~~

Visited first Toby
Lytle & Fair
Wilmut also

found us that
many key clams
specimens to
be noted to note

visited also Paul
Museum

Saw at Woodruff
the Redstar of
unspotted plan of
Museum



Two gullies parallel
for mammals
& reptiles —

Other gullies at right
angles for fishes
and invertebrates
Thus arranged

Stratigraphical order
these beds.

Defects of this arrangement

Obtain gullies

Side light & alone

& flat cases

Side gullies up

Left & upright

& flat cases

[Faint, illegible handwriting, likely bleed-through from the reverse side of the page.]

Write to Walsh
Pembroke Coll
Dubland also
Lady Margaret Hall
& Sumner's Hall
Estate Orpington
1879

also to
Prof Stokes Cambridge
and Prof Stokes Dr
Aboulghaib &
Newham
also to Truman
also Palestine
Fam.

80 students in
Newman

Students may in
my matter
curriculum books
in taking time
Kinds of
summers must

Nov 29 830

Visited Cambridge

Trucked with Whipple &
Miss Gladstone

Went with Miss S & W. W. W. W.

College Principal is
Miss Clark. Two halls
in garden of road are

Special Miss Clark are

Miss Gladstone, also is

V. O. Plain Luck

Cubley plain value

Single room with bed

to make into and 3 doz

chem laboratory.

See Report of Teachers

Committee

Send up Studs of the

Misses Seams.

Switters & debiles

are results in temperance

decided in favor

Partents said to be kind

& just

Students may not
attend lectures.

University of

Interested to get to know
Meredith Hughes
Law Dept. Chairman
Principal, very
practical & clever
& somewhat experienced
New build, larger
& fine - Students
last 2 years in
town & outlandish
ways

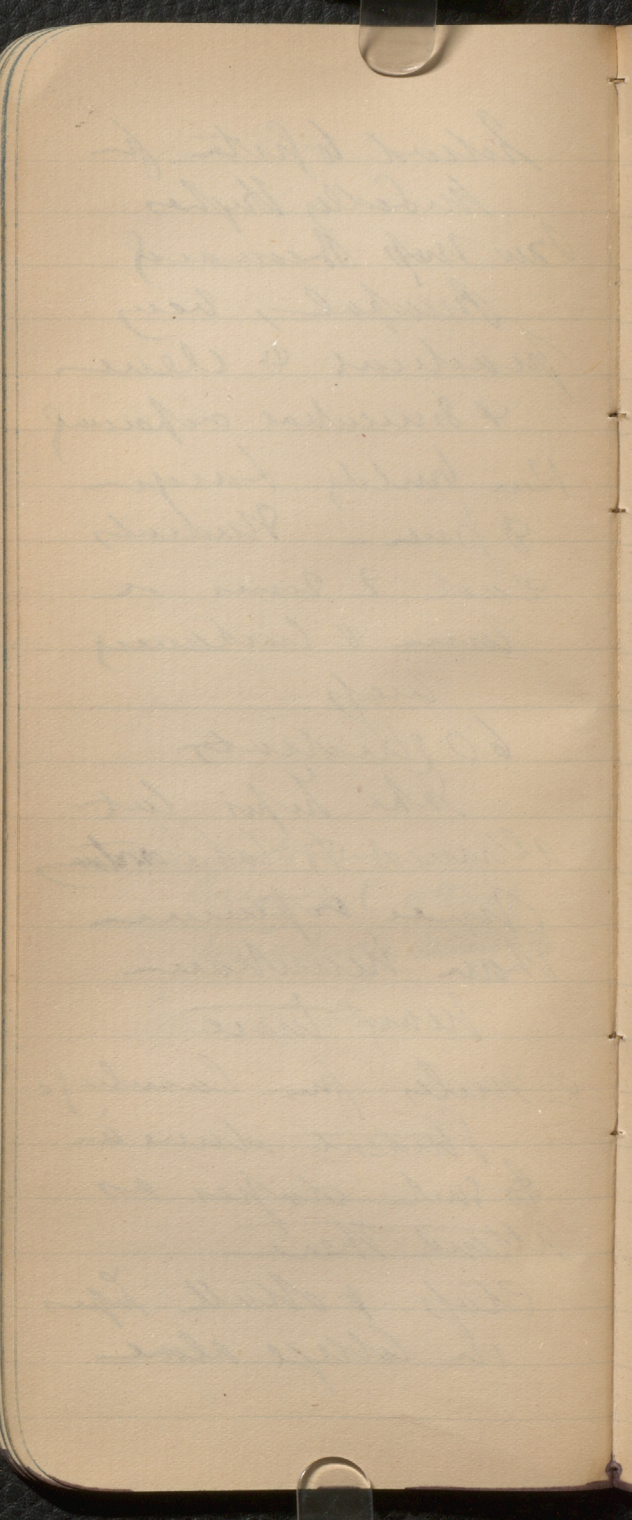
60 students

Take papers but
allowed to take ~~any~~
more experience
than Newham

New town

2 miles from Cambridge
Students drive in
to suit classes as
attend there

Class & Math papers
in college alone



Oct 31 Close of
Lisieux, visited
by Prince of Wales,
Duke of Devon & Duke
of Albany & Duke
of Cambridge &
Harcourt & Fenwick.

Nov 1 & 2 of receipt
with turning - BA went
to see little outlet
of London day, also
put with church
and gave to
found very
mixed and irregular

cloudy 5th so in to
stay at Carpenter

New Collyer Town
New cattle (red by sea)
deam, Birmingham
Yorkshire Leeds
Owen, Manchester
Liverpool New
Birmingham (Cof Rate)
Sheffield
Bristol

K

Nov 5 to 10. At
Carpenter occupied
with exam of bones
and solving doubts
and explaining specimens
to him. Some papers
with Wally, Flower,
Wheeler, Binney we
dined at Raes
one evening. See the
Redpath Co

Sat Nov 10 came to
lodgings at the Hotel St
John Hotel & dined with
Prof Williamson.

Sunday at Oswald Dykes,
Lumber & Refractory
Not good because not
deep enough.

In London numerous
women admitted to
lectures as men. In
New College Study

[Faint, illegible handwriting, likely bleed-through from the reverse side of the page.]

+

+

+

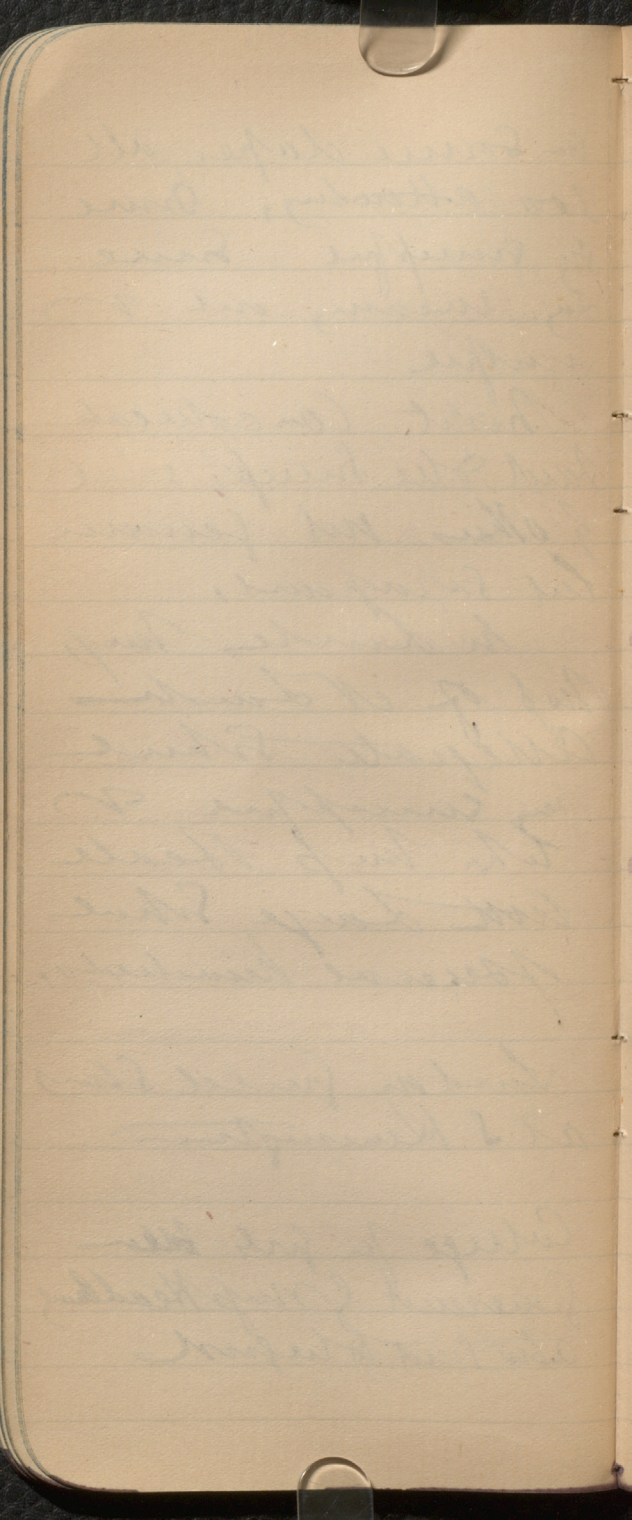
in some days, all
300 attending, some
by snuff, some
by means, out of
snuff

British Co. of America
said the snuff but
of others not known
but superior.

In London, the
top of it is
alligate which
is snuff, &
the top of each
with large shell
of several kinds,

London Guild Street
at S Remington

College for girls
General of Mrs. Keating
also sent to be sent



Book Club

Col. G. S. ... on ...
Africa

~~John~~ Petre, Bramble of
Rich
Bumpkin Ho

Thursday Nov 15th

went to ... by at 6.30

Saw Owen, Wally, Rae
Tommy, Gilbert, Dewar
American many others

Went with Jeffy to Club
dinner saw Jeffy,
Quain, Richards,
Sedolue & others -

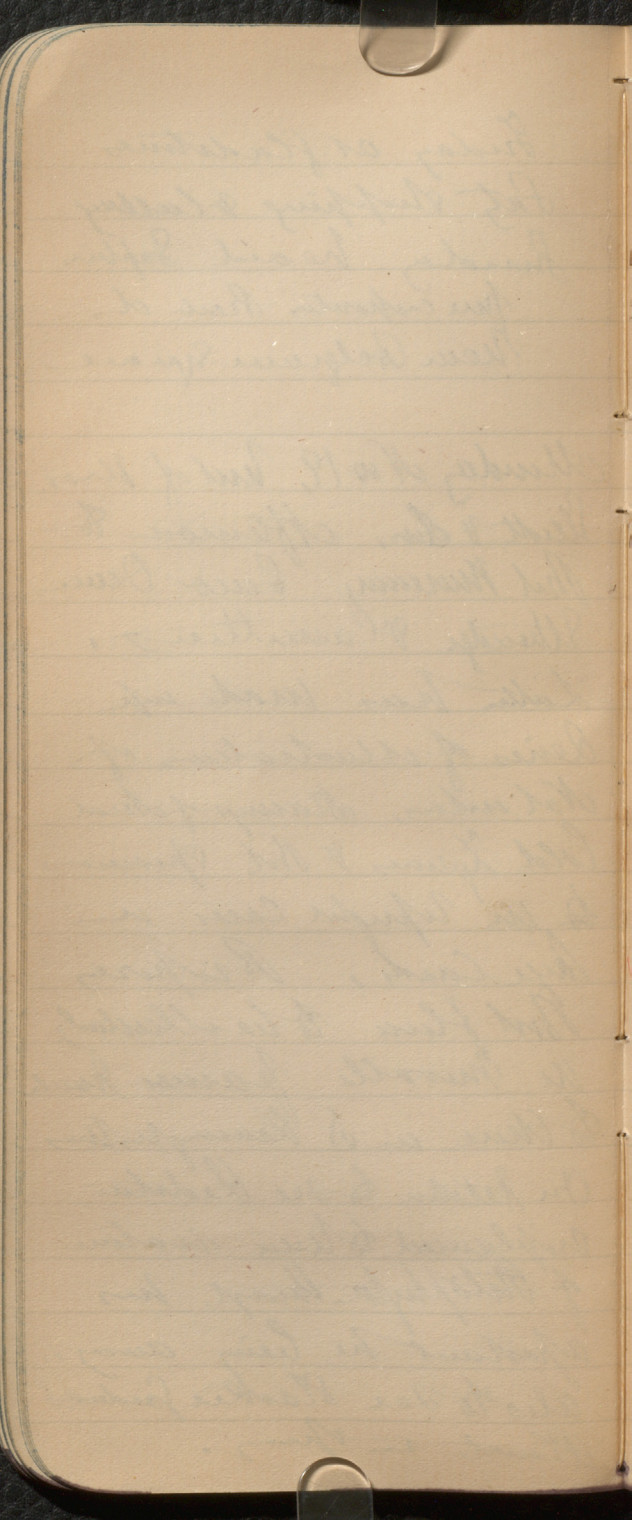
Note on Women's School
to James, James
Murray & Wilson

Information from Gladstone
about ... Col. ...
at ...

[Faint, illegible handwriting at the top of the page]

Friday at Gladstone
Sat Shopping & Callay
Sunday heard Suptin
fine carpenter Built at
Near Belgrave Square

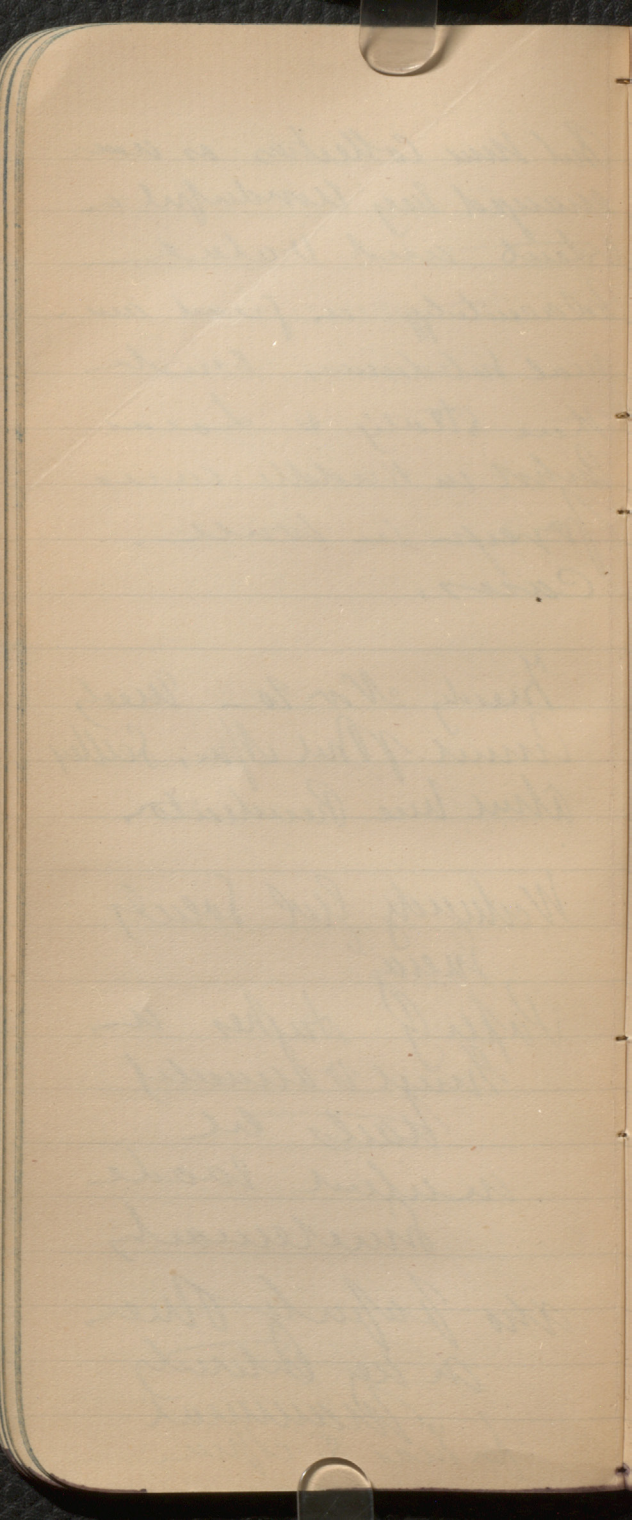
Monday Nov 19, out of Mrs
Scott & Son, afternoon to
Bot Museum, Saw Owen
Steward & Clavett,
Latter has made up
series of illustrations of
Nat. colors, Stamps of dried
Cold Figures & Bot specimens
to be in upright cases on
laye cards, Respires
Bot flora to be collected
in movable frames such
to those in S Kenning's
On return to see Ledda
explained to me nature
of Pterophyta though his
absent he being away
also to see Clarke's
Plants in Spring



But Mrs. Colletton as was
annoyed by wonderful a
extent and value
Relativity in great am-
mal subdenns, under
their stratig & Local
Buhl in middle cases
Preys in lower
Cases.

Friday Nov 20 - Meet
Annual Mrs. M. S. Selley
Alma Live Residents.

Wednesday Feb Society
Meeting
Paper by Hughes on
Huge Damages
Halls be
a useful trade
merchandise
also paper by Mrs.
on her interests
Mammal
for Mrs. S. M. M.

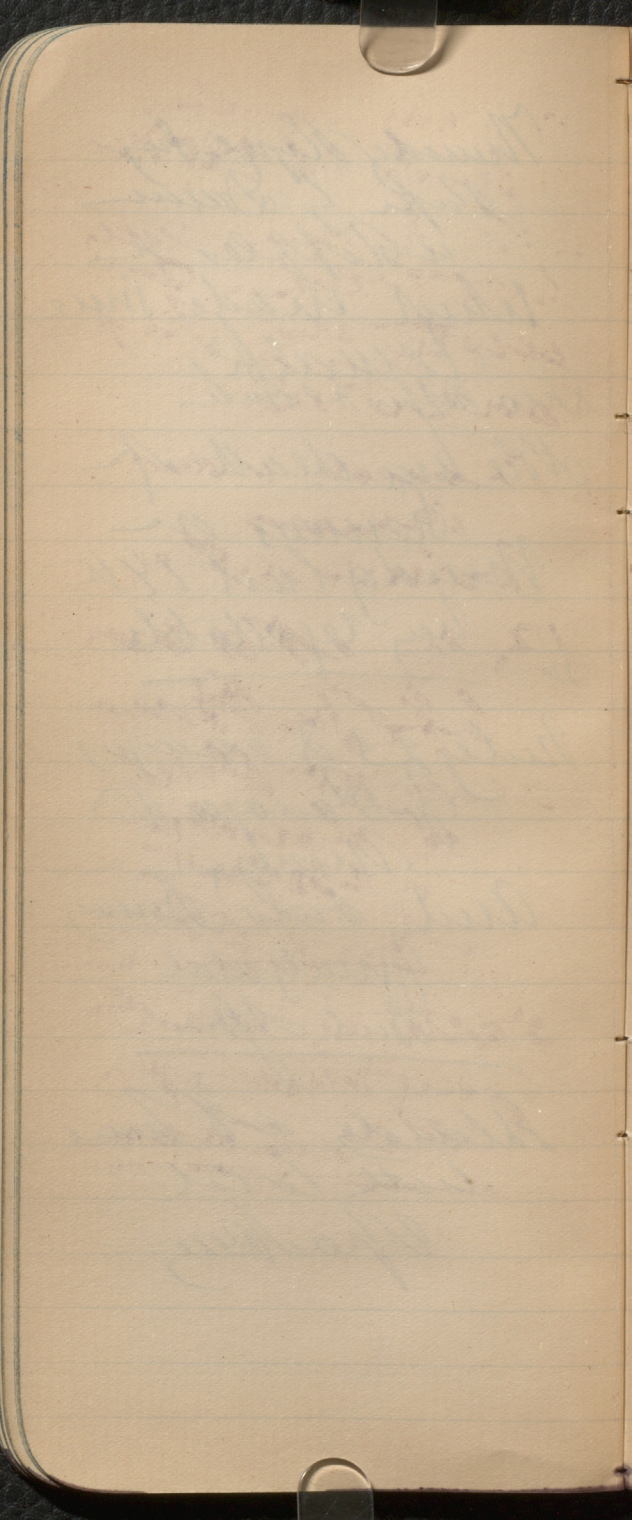


Mundy Type by
Paper & Dams
in Ripples &
which made some
Remarks
Two Ripples & Dams

Note here death of
Reviews on
Mundy last 19th
in very respectable

July 23 of anays
for Dams &
Money
and also many
Malyat
but Apr

Always at home
with cold
Sparks



Monday Tuesday
Wed 26 to 28 Nov

- At home busy
with work &
write out paper
on C.P.R.

Thursday Rankin
arrives

Delivers letters

Friday at 10 AM

left for Paris

arrived Hotel

de Louvres

at night

before 9 PM

Saturday wet

Spent most of

day in Louvre

Friday

Monday Dec 3

Went to Hotel De Ville
Place De Furstelle
Famulus at 10

Called on C. Dreyfus

Went to Notre Dame

Sainte Chapel

Baytheon &

Mercedes

Victoire de France

Called on

Meffatt

Tuesday Dec 21, 1866

Another day Pecker's lot
at school - some
undoubted work of mine
others prob chance

2 types - oval
8 lines

Both probably
for *Popanungus*
some perhaps entirely
the father's Popus.

Teeth of *Elephas* or
Elephas same
I determined with

Flakes also
in this lot

Some types of it
at school

The Mountain
Some things like
Acheron
other were better

Quadrant impluvium
Anciennes de Pseudoh
et de Selin

are interesting as
many Acheron
types in Quadrant
not found

Mountain Cave

Dudopne

Rough wooden axes
& etched Haches
& all sorts of planks,
spurs

Enlourne type
In Langou Haute
Dordogne

are just under arrows
with peeped edges
some well made
others more flakey,
flakes like
chisel
Remains carvings
with there

Grutte del Eplice
Dordogne
has some beautiful
work = to any
workman
I well carried
articles be

The Madeline
starts here
and plus names
we can release
in hands
ready to release

First subordinate
small plants

fine hairpins
& deer antlers
Curved

& real needles
all
ready to release
The

The implement
for the pieces
is a hammer
with which he has

Grotte de Néron

Ardeche

Has Bear (cave?)

Have Rhinoceros

great bones of Mammoth

deposits near here

It is not
found

See Merritt's book
about there

Map of France
used seen to
show

1 Pyrenean tube
aly S of Pyrenees
Stripped to

2 Rhone &
Loire tube

All of Rhone
used W of Mts
to Theng on
the same

3 small subalpine
tube
at S of Jachet
Geneva

4 a France Valley
In Solitude
along with
to head of
Summit

5 A Scene of
Summit
Paris to Abbeville

6 A Mease tube
above above
Cherbourg

Separated from
I. Inuit

Three four days back
at St. Germain

Might have
been

Antwerp

Write per printed
Beards teeth
as Chm. Indean

Menton futures
seen to be like
Medelane

Mind Spilenta
with food in
chippy

Said to be
Badané Rousé
near Menton

Beau Beau

Imps in a
open

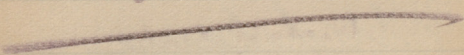
but no hollow

Imps &

some several

areas of Hammer

in handles



Flint does

not improve

in polished

stone age

except tanged

arms

Map of France
in Dolmen age
shows large
luteous
Rhone to
Belgique
Smaller on
Seine

Dolmen time
has fine cereals
flint among
Wampum
has bears like
of Bronze
of Pottery by plain

Deduct amount
from

E. Bruey

D. Bruey

Al. Bruey

Ph. Bruey

H. Bruey

M. Bruey

H. Bruey

F. Bruey

B. Bruey

Ch. Bruey

by

Supercetes

C. Farinatus

Phm Superus

Ordo Murchet

Cepha Murchet

C. Murch

Chelipe superus

A. Saiga

Gulo

Chelony Murchet

Spemphiles

Richardsoni

Fetus lappus

J. albus

Sulla Pills

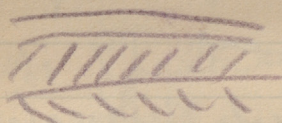
Mr. Deery

Mrs. Stone

W. H. H. H. H. H.

Hall's

Prize medals



Order of purchase

Museum St Germain
Old chateau (see guide book),
restored and converted
within Museum of
Antiquities of France
beautifully arranged,
oldest. Large collection
of Peatles - nothing
but highly clipped plants
remarkable for large
size - (Distinguishing clipping
papers & sketches) from
Cotté absent. These
found in some panels
Two main types are
and printed. If used
in present form, might
be published, with
other a Tomabooks
In same beds fossils of
teeth of Elephas & other
cross. Many of
them may have
been easily seen
& left unobserved

Some in the collection
are very accidental
fractures

An instance they
is that in "Quadrati"
for example of
"Peculiarities" & so believe
de la Vall are very
not unlike those of chebeul
and what would be of
man's making.

Then comes an page
placed with what are
called type of "Mouster"
See pages in this then
is no real advance
in chebeul except
that some small nips
what may be arrows.

In what is called
"Blanc" type are some
find which are among
without tang along
with rough chebeul
strips - here we have

Chippy & edges, also
well-carved bottles

Sotto del Ylce, including
in this has some good
arms & great knives
& well-carved cutlery

This leads to to collect
Madeline where all
the arrangements are
done of Am Village Indians
described before

Sotto de Uera, Ardeche,
(not chapel) has bears,
Hares, Alions, Possums,
Elephant, musk, musquers,
Rein deer, & all these
very much furnished flocks.

The map of Xauve includes
with three streams, plus 6 des
tinct districts in which probably
separate tribes may have
lived more or less
stay separated by hills
& flocks in mountains

See before for the
deposits

Several vol from
Budapest House, Ment
deans, most of

Medelane type, as
to Menton Recher

Scattered they here
are quite like others
~~and~~ except when to
Grouped pages, there are
also names, which
have perforated holes
for handles.

In this age the
plant does not wrap
except that there are
target around

~~of the Menton~~

So

In Dolmen time
all well targeted plant
around, ramp, but
beats teeth, to more or
by means, probably, that
Dolmen map shows great
to take into them to Dolmen
mouth around some

In full pattern
as the paper marked
edge and also oblique
lines by ~~which~~ like
Heckelapp, this
is mixed with
Aurora.

Saw at this museum
skulls from Cro-Magnon
including the rounded
woman

Note that some handled
implements in collection
up stairs handled 1st
in time 2d in time
flat types of chisels
good points as axes
or arcs, long types
as picks - may have
been used for digging
canoes or digging
as found or as the
picks carried this

with number of
Innes at 50
cheek,

The quantity of Weapons
at Madeline are
described as a
people hunting large
fox. Must have
had carves - ?
skin back in
dugout.

Some dices
like habs then
large marks of flint
axes on river
bank where Carves
made

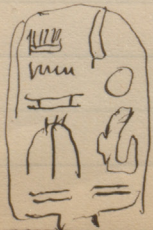
Implements scarce
look like imperfect
to be pushed there
rather than put
of them for that
but some fine
ones and might

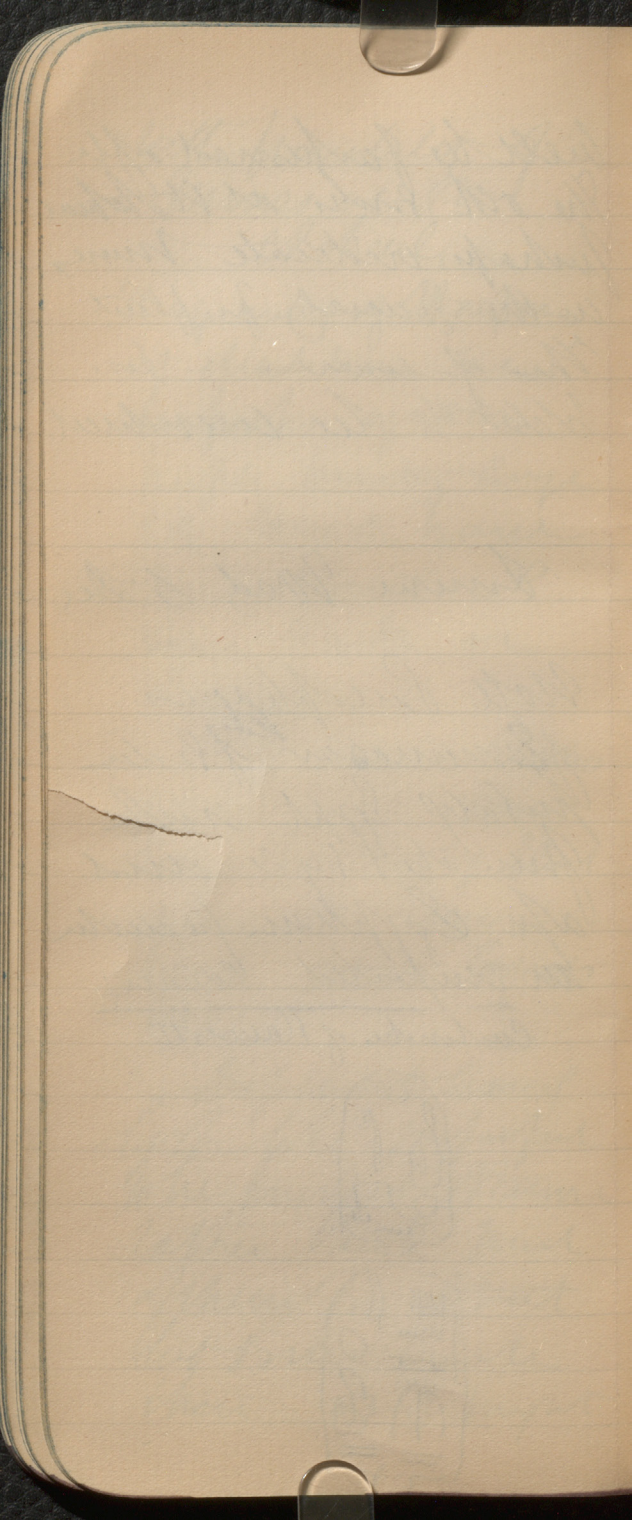
well be furnished after
 the old books at St. Helena
 Perhaps indicate names
 in the gravel for flint
 This of course is possible
 what to be considered

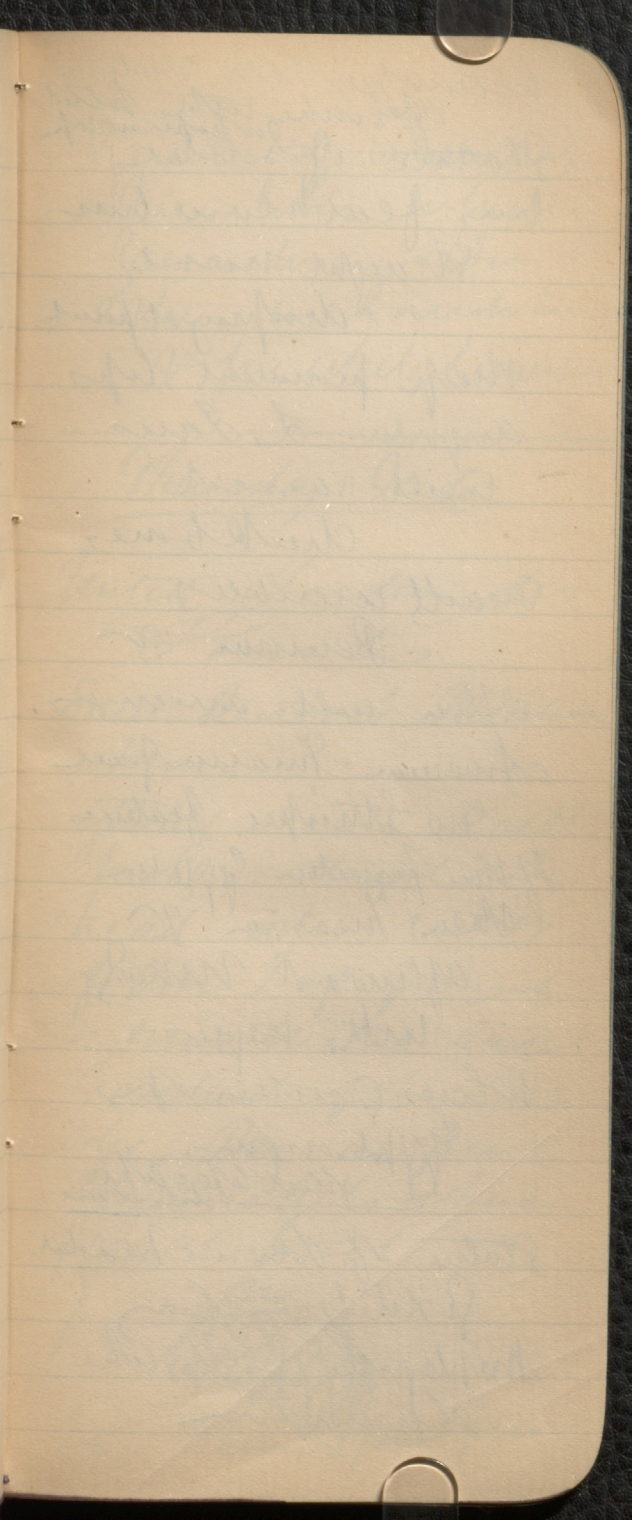
June Wed 5 Dec

Note Sarcophagus
 of ^{Kelley} Immasar of the
 Ptolemy Egypt with
 from the Nile and
 an Egyptian figure
 an unperished copper

Cartouches of Ramses II







beauty of the statue
of bronze with bullet.
Statue of Sauru

has feet low but
straight nose
drooping at point
sharp prominent lips
angular S. Jaw
well raised

cheek bones
breadth resembles
Peruvian or

Other cult Americas
American. Inman face

No striking features
of the primitive Egyptian
than Inman or

afterward mixed
with Negro

where greater of
Egyptian
short life-like
looks at one

Statue of Lion-headed
Gods to pray
Morphology fresh like
Lamentation

Genite of mammals
then looks when
greenish Do
others in sandstone
& fine white limestone

Thursday July

Visited Jardin des
Plantes

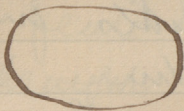
Saw Ruvens's Neolithic
man

Noted Neolithic shells
shells & rotted
head also red of
of iron? of paint
or true metal. Noted
pendants of shell at
edge. One in front
flint chips & bones
at back



? of fine iron supported piece

Eys socket very long

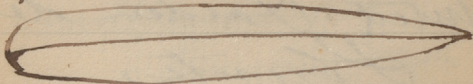


Pendants this form



Shells are Nerita
and Trochus

Shells of plates are
picked ones this form



Many Specular ones
in little rectangular
space in front of face
? of rectangular box.

Leath. perfect but
great worn down
areas by mud etc

Head & of Croc
Mappa, Solentia
Suis type
Like suspended skin
of Ropua a Mura
type

The body lies on
inclined plane, head
of shoulder higher than
feet thus —



as if supported on
hunch,

despised pro for
W. A. Hume!

small in size or
referred perhaps
by purpose

one in the dent. Dec
aged. Others are
but of same size

Accordingly various
small

then prominent
true delicate one
paired with the
major

* one tooth seen not
shown at top

Has the look of the
2d German race
rather than of 1st
race; but very
abnormal it
may be modern
as well.

Some traces of playe
we said to have
been found with
it.

Sibontic & probably
Genelle skulls
are of W = magu-
type

Central Germany
with small pebble
skulls from Tuzen
in Belgium

Other skulls from
Illmenau & lake
Osnabruck
Mauche & Celtic

Renelle Steleto in
Case near ~~La Haye~~
is like it ^{attention} in
May reports

M Quatrefages is the
Keeper of the
Pechum col.

Rue de Buffon
No 2

^a Anne Foul et
Anne Saurin
18p Muller

M Renaud

1 Rue de la
Collegiale

Cher Anquet
8 Rue ^{Sty} de la Bourse

Dealer in Pechum
Paul & Michel
No 85

Speakers of the Congress & in Selby
on the Budget

United Chamber of Deputies

Hall Seminars
with platform on
Speaker also on
raised platform
& Seminars
Seats raised like
theater for music
all 200 present
Tulane Street
in front of speaker
a little lower
chairs at back &
side of speaker &
in a part of
Tulane

Speakers on 2 galleries
Wood Seminars
end

Deputies in Wings
Heard 2 speakers
Linn. annual dinner
was

1 another in left
Speaker from Tulane 2nd Street
Linn. Seminars & Seminars

Dec 7

Friday Left Paris

Cold below freezing
& ground covered
with snow. Fruits
near Indrebleau
with white frost
Beet & Spruce &
Pine very dense
to common &
white pine found
under cracks like
Cinnabar under
Sediment

Envelope of ice
on still parts
of River

Some open outcrops
of cliffs of green
Serpentine with
caves — remains
of Prehistoric man

Lynn's Museum
Many good Roman
Gaulish things

In fact we saw
good specimens
of Archepiscopus
in Gaulish, object
of Menpithen
from Orkney
and good Cardigans
from 2 Cardigans

Specimens of
Gaulish
Cardigans

In same Museum
fine collection for
Stewart

Among the Charles
Sous's direction

Skulls Solonche
are clear of Cuv
Magnan & Hochelap
The eyes probably
but to why.

The jaw many
have and in
seems to be broken
& is marked
"Cupant"

One whole skeleton
of a woman

Two skeletons of man
with large head
and short thin
limbs, but
marked S. Coballus

With Solent bones
are best marks
of *E. pringens*
also bones of *Sus Scupa*
Canis lupus *Sulo*

Arctomys pringens
Lepus of
Chalk Rodent
Moss? *Spel*

Syrms Keyway
Canis tarandus
Keyway

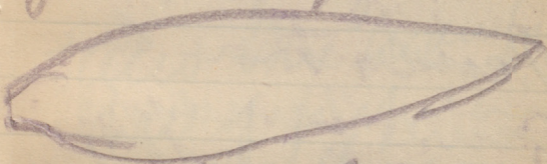
Museum has
fine skeleton of
some *Spelaeus*

but not from
Solent ^{Substr of}
Keyway

Signature A. J. J. J.

Solomon Islands
many flint

Include rock chert
flakes & points
of all sizes some
cup and knife
like and well
made lance
like thin warts
chipped on
edges & quite
like those so
common to be
called Neolithic
flint deposits



This form is some
times long

On a separate
card said to
be solvent an
a few anns
with tamps were
made but
called "Kubler's"
thyl surface
as white &
bleached as
any of the others
All solvents
very much
bleached

Besides there are
some rounded
stones called
"percubeers"

A few small snails
punctured across from
Solentia an also
called Oratitha

Also Solentia
Numerous well
made bone
pieces also
some bones some
to have figure
of Remains
found at
Solentia

Two of the specimens
shaped present
also one wooden
shell of purpose
of Crithon
of part of shell
of Cardium

also an oval
flat stone with
hole at one end
probably a
grubber

Solente said to
be Palaeolithic
& to cover
types Monstee
& Madelaine

Solente culture
is that of Abbe
Dumont,

Miscellaneous Notes
So called Keldhu
or Smaupe
& Camp Boucher
has wide Haches
with peaked flint
Spurbed Haches
also used Spindle
Stones & Grinders
& Flake Knives ^{& pendants}

Cragma found
Spindle whorls
also from Flint

^{wide}
Quartzite Haches
a oval Stone of
Quartzite from
Borg du Rocher
Cote du Nord
Museum to Semman

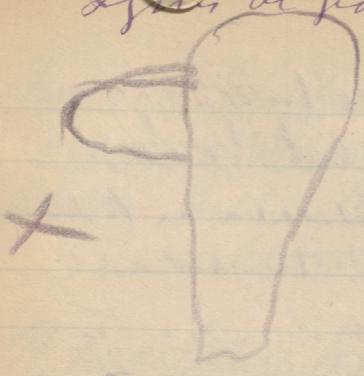
Many interesting
haunted areas
from Guro's cubes
are usually
small and
found just in
cattle pens
in woods.

areas not adre
es

One I called
Kahe found in
wood is a large
slightly dome
with no edge
& little better than
a mere ornament
to a club - it

any more things
have called
Fazelle
what are they?

Spines at Grand Hotel
de Lyon



Potter with paper
Marks for Lake
Habs in Stag

no such thing as glubine
separation of Pal
from new Gumpments
gradatus about
may be laps of them
may be local

Bone maps in lot
map benches a lot
round slabs in

lot
some chipped
pieces white
flakes of so called
scrapers in
lot

Impossible to separate
Age from local
differences in material
facture.

In so called New
are some large
flint hammers
which have had
edge cut across
polished; but
there seem to be
No maps are
of soft stone
& being to soft
Soil conditions

Note attitude of
menture worn
weakness & weariness
lay down & die
rather than
& slumped head

Note variety of horse
colors - so many
Superior class - & variety
of colors appearing

How did you
Mount the
Moose Deer
Horns
Remember

If had time
could hunt &
get a
not - must have
had arrows
must have found
cracks and
driven the heads
into them -

Some arrow
let care - find
flakes, make good
arrow points -
& small ones
destructive

But without
always
very few
heads

Cimals and
stamped page
numbers —

In the case
maybe have used
whole lot, wear
& make for pen
entire for day of
pieces for
things are

Sunday at Lyons

Dec 9 —

Went to Putch
in Rue. In lantern
Lemon in Turkey
& Lyons

Monday left
for Lyon
at 8 am

Country good with
snow & very cold

Road as far as
Chamby shows
the features of
Tropic Timestone
high buff-colored
cliffs with
Slopes at foot

Some cherty
slate meta
or crystalline rocks, shales,
of the green &
Ureumby
Jurianian

Note great amount
of tracing of steep
hills for miles
& little fields, all
through mountain
cliffs

Houses perched in
most unaccountable places
found and with some
shelled in places

all Ceris is built
up of groups
on crystalline highly
inclined, top part
angular & weathered
not stratified
about 800 feet high
& among 300 feet
for the of tunnel
to Turin.

At Turin the
Museum has some
from S America
~~and Australia~~
~~Thyris~~, *Siphon*
Megatherium and
Chachanodus

by the collection
of *Superga* known
of which ~~see~~

Mr. Federico Sacco
Pulzaro Casquano
Turin, prov.
Innes & Smith
specimens in herbarium

Mr. Bellard has
published 3 vols on
these soils — Les
Fonctions de l'agriculture
dans le Comté de Fribourg

Fribourg

Monday Dec 2

Came from Fribourg
By rail

Stations & side

Lebbin site

fully of Quat with
steams having
load gravelly
beds — ?
Somme

Country covered with
snow till top
appears very

Fribourg

paper into at height
of — feet

Ngai Fluene name
no more
disappearance

Curious treatment of
trees & various
trains of trees
in Po Valley

Fluene Valley Upper
& Lower & other

Heads of cedars
& the human
minds short,
broad — &
broad faces —
— Inhuman
or human
type —

note this
— fact —

July 4, 1883 -

Friday

Florence

Visited Pitti

Galley and Museo

Naturale

now limited to

Bot & Zoology

Saw Hall of

Galileo

& my statue &

his old telescope

Saw Prof Carucci

showed me

Aquila De Zepher

Thru Tombs

Overthrust

De Zepher now at

Padua

Prof Giuseppe Segneria

of Messina works

at San Oly

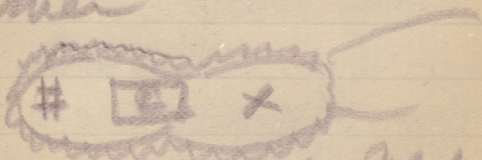
Prof D. Anania

Prof G. V.

Florence

Ruficapellus at
Oragna

Visited Fiesole
on hill 8 miles
from Florence —
near Fiesole
Etruscan town
on double hill
alt 1000 feet above
sea



house, C. camp & lake
+ part of town —

Hill is sandstone
masses — of which
of some. Supposed
Eocene rocks on surface
of plain.



Sides of hill steep
flaming covered

with olive trees. Old
town on hill top
lower part defended
by huge wall of layers
strata some 15 feet
high. Roman
theatre just inside
this on lower
neck between hills
This a piece of
defence and
dimples, early
walled hill 1500 years
old 2000 when
entire.

Walls built of massive
sandstone from
the quarry

Large stones with
cement

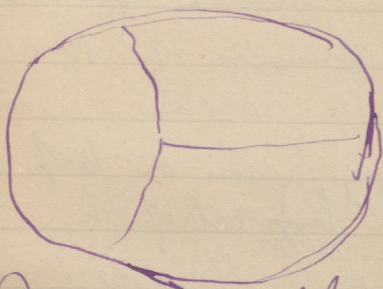
The main foundation
shows, walls shapely
strata like those
of old Greek buildings

Flower Saty Dec 15,
voted academy
del chd and
also old Academy
of Mark one
retained by Savannah
and new many
Monuments of
him. He cupy
All being MS
Wm table he
Curious old cupy
Monuments with names
of Tra chylus
in Mark Cells and
also in Court.

Place in Square
where Savannah
built now occupied
by fountain of Neptune
Flower been
her reformer now
does him some
slight honor as
a patriot

Visited New National
Museum at St Mark,
Still in course of ar-
rangement. Saw
Remarkable remains
of Elephas meridionalis
a separate creature
with long tusks like
those of the Jamesas
also Mastodon
specimens a fine
specimen with narrow
teeth than ours
Also a fine skeleton
of a species of
Shells of a second
species of Inna. The
specimens is found
here in same beds
with U. pelaeus &
even older, also
another fine specimen
many branched
and in the Florida

Fruto remembers the
skull of a peacock or
Plymian. Does not
seem to be a most
archaic type.



General form like this

Another skull in
the same class is
said to be from Pleisto-
cene Kanab ~~to be~~
Pleistocene of Ordo, it
is a new fragment
but to far as it goes
resembles the super
type

Noted *Myrmica* at
~~the~~ *Enlarro Crocheta*
Egypt antiquities well repre-
sented but did not
stay much. Found
none attention to *Stenus*
large number of some
bones for ashes with
siding pyrus on top
of some ~~by~~ ^{also} reefs on
sides. Heads very
round and short
of *Stenus* type
Some with human
features, not much
to pick but not so
fine and correct as
best Greek. Some
strongly like *Gyph-*
lan. One *beta*
Gotta female
pyrus is partially
chrysalis and
inhabits

Woman purple with
shad heads and wooden
face - exposed in
upper claps and
by admittance

Leavitts of
and some in char
lands, ornaments
Sweepers etc

Woman alone
has portrait face
fine & elevated
features and good
features comes
from Alisium in
Chusi

Saw here

Wino Berzli
Curematu, tell
Jalmethu.

Who explained me
they —

called on Miss Brown
very pleasant and
like to have her
visit in summer
all winter

In my paper
Miss Peter Suman
a fine old medical
gateway still well
preserved.

Went to the
in the presence of
the town hall
myself palace
of Amos de
Medel, was
Ant Sumanus
with Mrs
Jules and
Junita
in cattle.

Mundy

Dec 16. 1883

From Fluene to ~~Fluene~~
Aene. Saw on the
way Site of Curium
(Chius) and Lake
Thrasmene. The view
of Fluene seen on
high ground at Chius
and very top of
Thrasmene between
Lake & hills while passing
ground W of Lake



Key, Curium volcano
Curium approach
Name — hills of
hard knobby &
valley of Fluene
Marine & capped
with shell of Calceola

Along Upper bay
from neglected
Crab frames
bottoms along
River - mostly
sheep country
Olives & laurels
they planted
near home
better but ^{want of} ~~reminds~~
evidence of oppression
to a great extent.
Some half
way a map of
various ~~men~~
Cooked streets build
on old kitchen -
middle of ancient
city. Many have
been ~~removed~~ ^{removed} ~~from~~
hills ~~and~~ ^{departs}
of swamps from
plane for
robbes.

Tuesday Dec 11/83

Visited Coliseum
Material built filled
in with concrete
of lumps of Popern
red & grey and broken
bricks. Found stone
and especially columns
of yellow, some marble
fine pieces, some
Egyptian granite
about remains of
marble in water
but all original details
ornaments gone

Went thence to
Arch of Constantine
Arch of Titus and
Audience of Constantine
but some remains of
Red Purple pillars
in front. These
Roman Forum

Lapping a number
of lacera man
part & piece
of these days
Remains of Temples
Aunt. Went
to Palace Hill
all 110 feet above
many ancient
great structures
Similar to the
Cul of Chupituche
And of Puebla 2
but very hard
decorated in granite
Spots of white
Basins Marbles
and plaster
painted.

Religious view
of House of Sacer
and Walls of
Sanctuary 2
arched rooms

on island of Calypso
Palatine decidedly
intipalle and well
separated from
neighboring hills. = *Stroma*
Bill joint + Contact
of wide steel pavement
and iron accommodation
with with orate
Halls.

the monument top
of lowly stally hills
on the Coliseum.

Recesses show
down then 20 feet up
subbed over great
part of sides of
Palatine Great
of fountains.

Catacombs Dec 18
Visited Cata of Callistus
from by Via Appia, main
road between woods
One of Peter's & Sebastian's
when first idea of
old Roman walls
bottom like structure
over this stone of
soft bits of brick
above. Graves on
this wall all stepped
of rubble.

Descended into
Cata of Callistus from
May Sepulch chamber
with remains of
Jesus - Some Roman
Art in & a few
manuscripts Lucilla
Inventor 6 to 8 tons
Cist in Tufa -
Mouth open &
rifled.

Follies narrow but
spine and base
cut with others at
right angles could
delay ~~some~~ follies
and here and there
cinder chambers
with trunks among
Some of these had
small sarcophagi
now transferred to
Lathrop Ave.

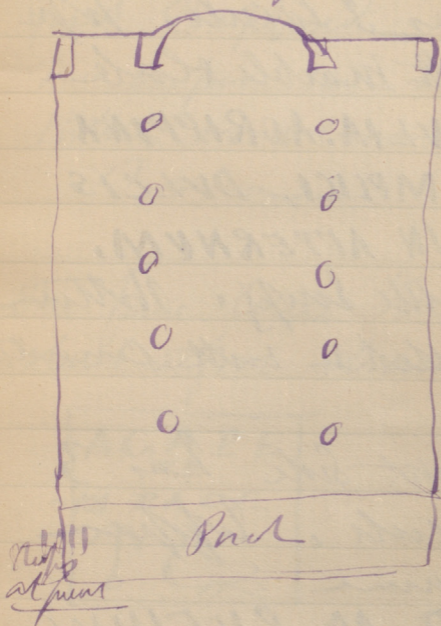
Next went to
old Calaveras
of screws & shells
or of Dinitia
See many examples
Stabs of Marble
also skulls and
bones fragments
of sarcophagi and
chambers almost
entire
see page opposite

My Latin found
I know you are
Scriptures, I must
was a member of
family of Flavi

Christ referred
to father a
to Basilica of
St. Petrus
legendary daughter
of Peter —

This is built in
the catacombs
property alone
it & may have
been used
contemporary but
attributed to
4th Century
It is a few feet
angular in

with two rows
of leather cuts
with plain shafts
& caps at end
& two ropes the



Check point to
have been my
for 5th to 8th cent
— my —

one fine chamber
is called Capella de
Froni a Flori. It is
about 8 feet square
and of considerable
height.

Side opposite door
has 3 loculi. Top
with marble slab

C. JULIA. AGRIPPINA
SIMPLICI, DULCIS
IN AETERNUM.

Middle empty. Bottom
filled in with concrete.

Right side has 3
loculi. Upper
name

P AD, RVFIVVS
second

M. AVRELIVS, IANVARIVS
in at level of floor
joined with concrete

Left side 3 loculi
Upper
ANNIVS FELIX,

Second Camp
~~From~~ June 1902

In some parts slabs
but in place under
the ~~the~~ ~~my~~ ~~common~~
also does - & one
good Shepherd
No cups the paper
plates emblem
seen

One fine little Table
about a foot diameter



a curious monogram
this

EAL



The * in many forms
of the old church with
wealth surrounding

In church also figure
of man with up
lifted hands - see
sketch in notes
Many manuscripts on fresh church

The very ground is
what their calamity
stratagem in Tufa has
by blafest ^{to god} a or also
level of Campaign
what interferences between
it and city wall

Tufa is diff but
top of current
Column I will pitch
for easy excavation
and for standing
Not before unless
prepared but in
pines chambers
covered with
plaster



Collection in Lateran, as
ranged by ^{De} Rossi, (See note bk)
great number of manuscripts
but few as old or
interesting as in Calanina
of —

Among the notes
are Tras in Domino
Deus in pace in fine dei
in Deo vivo

Bibus in Deo

Pax et in ✕ | domini
in aeternum | in pace

domini in pace

one by unscripted states

semper doli in aeternum

In list of charters & modest
type

but restored in reunited

2 same & other with PAX.

See note book,

Among manuscripts
of the same

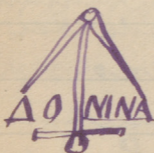
Locus Valentianus Praeb.

Exertus Joss

A. Muentus Jovone

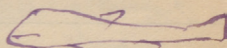
Demedro Labone, Puch

Amny Demer me

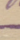


✠ ✡ EVALIA IN PACE.

ELPID



Spelling & Sculpture
after being
Fude

Note first Sculptured ^{Marble} 
Sarcophagi in the
Museum

Other epigrams
4 Domus Clementis
e. Rupinæ et
Victorinae "
This is very nicely cut

Dignus et merito
Futuræ Memoranda
Cyprius haec domus
Clementis Victorinae
benemerita - a fine

Herculis Merente

Candidus sibi
Nunc locum
erit

Operantibus

Buche Glücks
Christe
ES

Note that quarries
in Form. must
have sold the
sand & rubble
from Catacombs
a source of cheap
sand & building
& compensation for
transport.

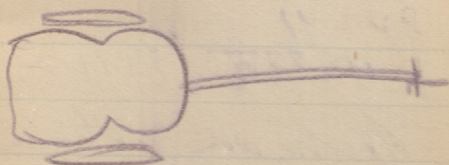
Good workman
in Catacombs

Note occurrence of
hatched cup π
on old Cinerary urns
a stone found
under lava at
Alfama & Marino

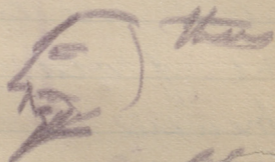


Old things
like huts
? of cinerary vials
small ones in
stone —

Remarkable
Borneo Channel
in Indian Seas
with blue
waves & white
in order of



Many pieces of
all sorts for
trading & bones
with various
also painted
trading bag
in a style
but with
pieces



Some pieces and
more as
a

Terra Cotta Nursery
very fine in
recollected, found
in Italy ———
of stone work

Roller near
Bachin the
Caucasus Roller
Pass

Called on Mr Shakespeare
Wood 89 Via Nazionale
Rome

Has taken mud which
in Catac. Says that
were interested in tombs
but in one case opened
out of old pits of
Chenari — Made by
shafts from the top
leading galleries & cup

gullies - with occasional
faint channels called
chaps. Main adit
kept open, but workings
filled in to crop adits
when they were freely
occupied. Material
not suitable & much
with extraction.

Site given by small
fossils as for example
Durotella & to study
that in time of
days outcrops could
be watched and
concealed.

Locality favorable
for drainage quite
dry now. The whole
secured by opening
& surface.

Ros. & Young

Via Trunk

Ros. & Young

Ros. & Pruchit 18 *Pleurota Barkensis*
Walden

Capitoline Hill abrupt
on side opposite Palatine
Hill to

to show general

Course of the river ^{to broad valley with}
N & S but ^{smaller} ~~Interms~~ ^{very fine} etc

a bend to the east
where is a little island
stand two isolated
rocky hills of lower
limestone, in the
flat smaller with
two hills = Capitoline
Lager very green
= Palatine,

original sites of
Rome with
swampy ground
between,

Fluvial hills
of the hills
which are signs
of general rising
ground, partly

Mucalipimus
the the two
See Anna Helus
in guide

Venerus

Wrote Tuesday Dec 25
Left by carriage, went
by road from
Mt. Vesuvius - by
circuitous road
gave me views and
pictures through lavas
of 1854 and 1872
The latter show strongly
contorted forms of
gray vesicular lava
with some on top.
Noticed the curves
of lava flows - see
map. Overway
half way up height
by record of all
Mt 4250 feet - rather
more than usual states
The Parlaweg starts
about 1000 feet below
the summit & is
at top station only

a short distance to
Crater. Round Crater
found much of lava
which has spread
from small openings
Round Crater, Old
Crater is of the Bay
and within rather
to one side a minor
Crater - In what
much vapor &
occasional shots of
vapors of melted
lava. Among
main crater much
sulphur vapor spray
from many openings
See map sheet
in red note book
No 3 - Lava
from spray from an
opening on side
which could not be
seen & structure shows
of 27 feet in diameter

Night column of fine

The composition of
Summa is well
seen from various
other layers of
Lava and tuff
and vertical dikes
Note that the
old tuff near
the Stewarty have
large stones scattered
about almost in
the manner of
breccia layers. The
Lava of Summa
various very
separate and
separate appears
to have been formed
& washed when
lava fluid.

Proper - Note
fine amount of
mineral peculiar
near

Old Sumner
have had great
Crepulum Crepulum
in prehistory time

Lapelle just ad
had in
Crepulum

Layers of Lapelle
therein capped
by ash

So I have been
at ropes
volc map with
old beds
of Lapelle &
ash differs to
them
I know

Dr G Davis
Splendid collector
lectures of
Summer work
Museum &
class, Pym
Gannet, Wilkes
Spencer, Moore
Britton, Smith
& the Linnæus
Spencer, also
Magnette

Plan of Pompeii

Today museum
handicraft gallery
from Hall & Pump
Pic art - elephant
houses, map of 185
Street etc

Left Naples Sat
29th Dec

Note old volcano map
of island - also a
volcano matter -

Appearance of Pshaw
Puteoli Monte
Nuova

Grand structure
of Castellammare

Tufa rocks on
end of cape

Rugged vertical lines
of Capri

Stumble parked
in night

Aelva Gurus =
clad in

Cloud topped
supra-ay lines
platform

Monny Pishes

Last night of
July & since snow
clad hills
Cold pursues us
all next
day - strong
North wind
Subverted Sunday
evening

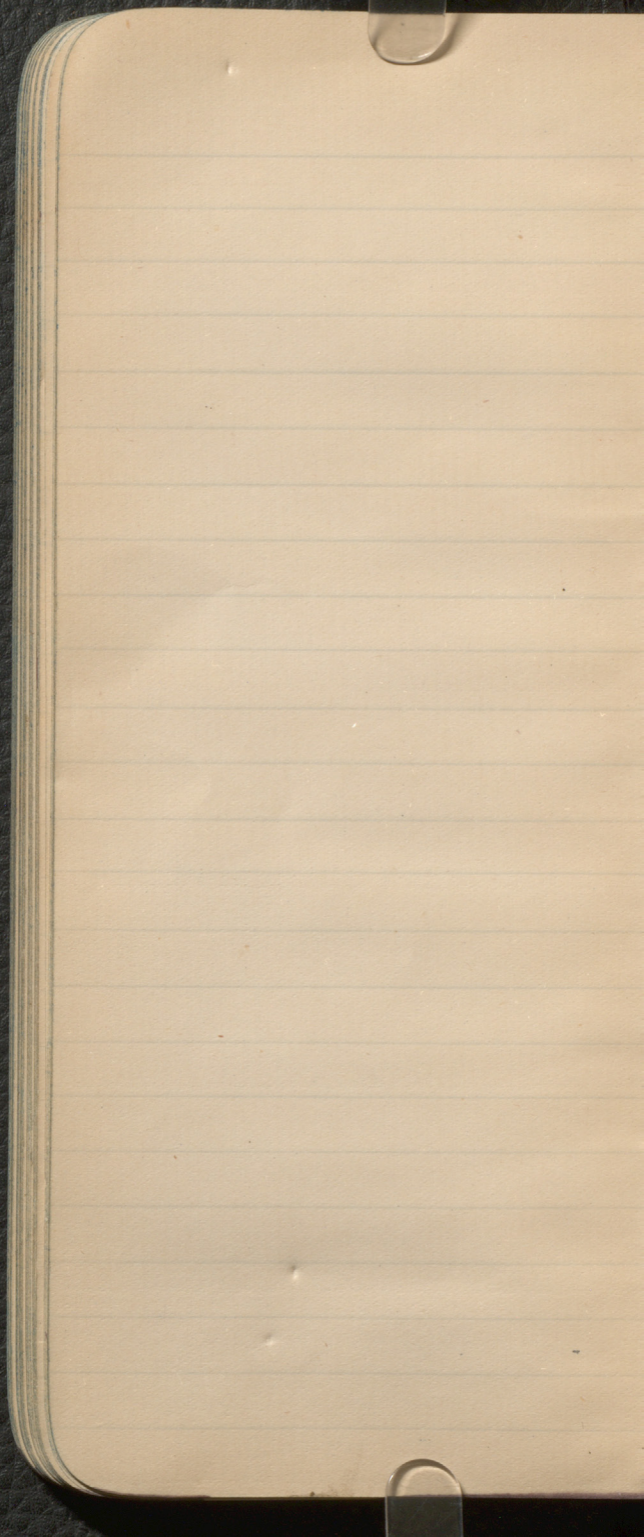
Army of C. Cornelius
Rufus
& Burt same in
feature with the
cast of dead
man from this
house in museum

Lecture at Pompeii
New excavations

Sapelle 1 ft

June ash with
small limestones
8 ft a few fossils
of Sapelle

Sapelle white &
dark & bits
of lava (1 unit)
Several feet
to bottom but
the upper section
Fishes of reef mixed
in this,



Bushy

Warren

The Temple of
the truth

Tristram

Sate Bush

L of meal

[Faint, illegible purple ink markings or bleed-through]

Lehmanns new
Book on the

Lehmanns new
on the new &
Delage

Lehmanns new
Book on the
Sawage

Notes of Amnell on
Egypt & the
in Lehmanns p. 103

Lehmanns new Book

Proceedings by the
Bib. Archaeology

Memo
Specimens faithfully
transcribed to
Moose
Lake

