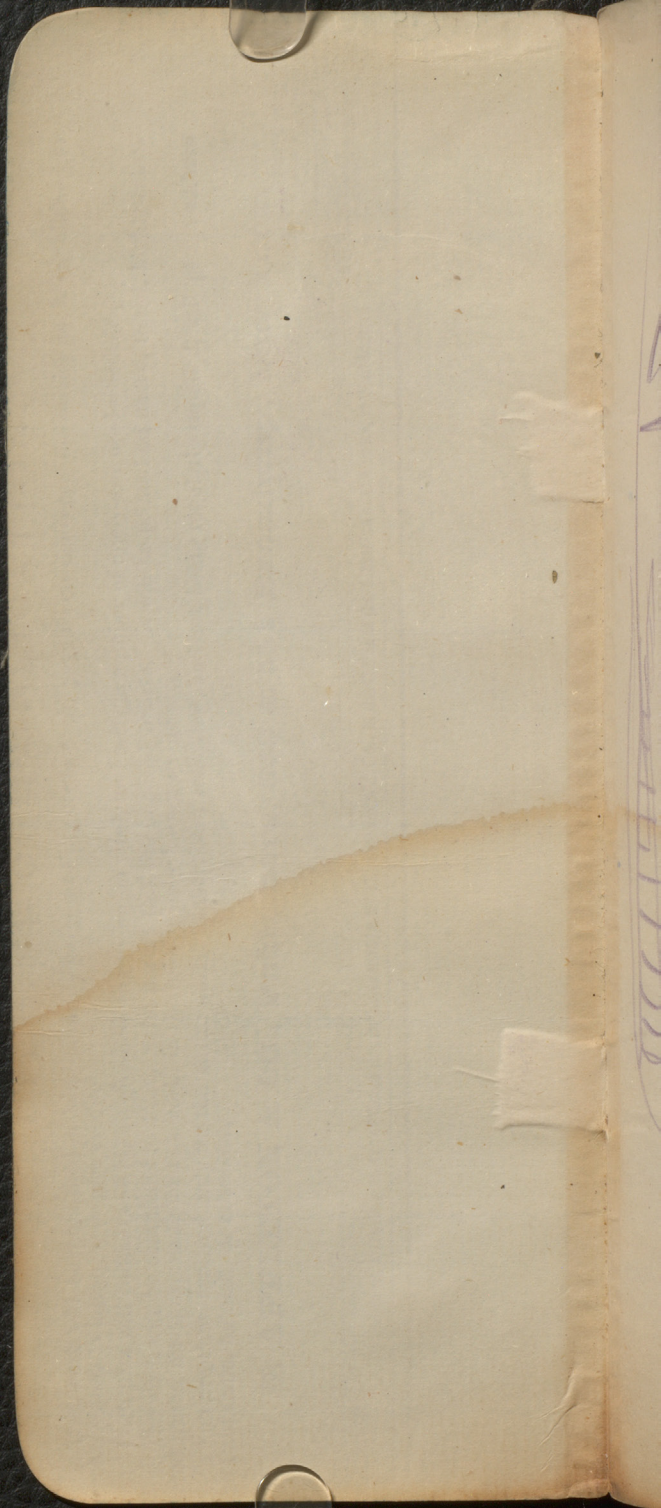
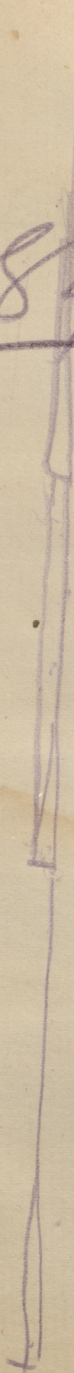
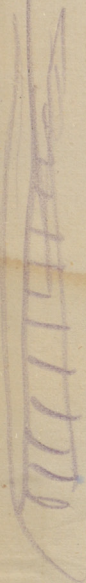


17

Alexandria
to
Jerusalem



1882



C

Ru

an

P

De

cy

W

co

V

V

a

Alexander

July 2/84

Ridge of ^{sand} silt & sand
& sand

along coast grasses
at New Orleans

Plowman & paper
taken from Delta

Delta has patches
of sand paper
through with other
villages

cloudy delta & of
Delta

Many villages of
New Orleans

New Orleans
hand culture

deputation imp

July 3 & 4

Carro just above
immature

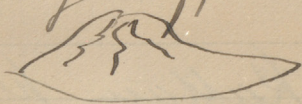
Plain, 8 miles
end - Mokattan
& plateau of
Guzoh

Citadel Hill
end of Mokattan
Mammulate Sandstone

Mokattan Hill
shows lower white
Mammulate
& upper brown
Dip slight to
N. All lower

Guzoh Plateau
has coarse
sandy sandstone
like upper
Mokattan

a Pleistocene
Pliocene sand
with Schurman
at base
Large Clpeatus



dippy S 75° E
at low angle
Small shells, Echinus
stems & leaves
as Mikattan

Branches cutting
of Mammals
Succinea, Carys
great branch of
white prismatic

Stones well laid
with thick bed
of mortar

Height of great Py.
of avenue 425 ft

Plaque for Plans
to base of Pyramid
125 ft

Angle of face 53°

See De La Nue,
on Thebes
Curtis Reader
No 14 Oct 5, 1868c

Both McRae
& Grand hills
old sea cliffs
Wye cut out

Boys of Philads
& hills of Ormeau
at roof
Ardayh
& Schuenpuk

Note Ardayh's
Plan of Wood
Jungel
old canal of
Hadue

old canal of
Wile

Schuenpuk says
Reed Kerkueh camp
L Kerkueh old tree
of Wile canal →
Manne Wood a

Dr Lieberich an
Mronan Rods
Genufowl by
Fahrluch 1877

Tagr like Scamader
Gruerp

Achtbatter mine
cine an

ae to Schenpitt

both sides at same
level than center
periwinkle

Shells quite used
& Hoar just used
Shells 500 ft on
Jebel Fe - Red Sea

Alabaster of Duke
Jebel Urakam is from
Beni Sief W Bank
20 miles above
Cairo (Also near Sult
Barrake 62)

Note variety of
stones in
few formations
in Jebel Fe

oll

Wit

Tri

le

ce

pe

Or

a

e

su

le

d

an

te

d

a

McKattan Walls
Handy Gays
With Schuempff

Visited ~~the~~ lower ridge
behind Trubs of
Kulips

Cliff 20 feet high of
New Limestone

Full of bryozoa of Lichas
Top 200 feet above
Sea Level

Ostracods also likely to exist
and Bivalves &
Mollusks

Reptiles

Surface seems to have
been once under coral
deposit in ~~unusual~~
and of fragments few
lected with many
more of species

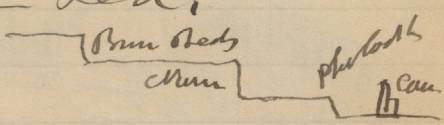
Mermaid Hill

Wally Fraas die
Schuempff

Large ^{bed} of peat at
Bramble Sands
Leam, to encompass

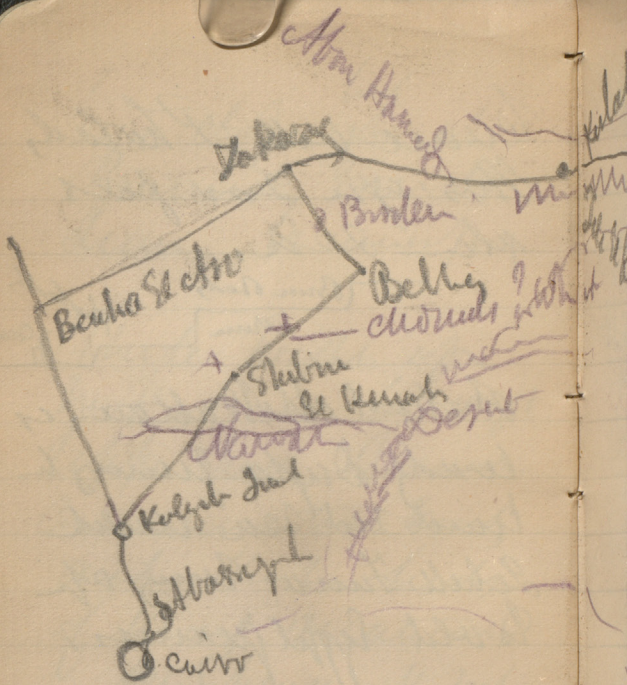
Whole height of
Inkattan 600 ft
Upper part Brown
Course limestone sand
and thick beds
of many nature
See Schumann's section
What Nummulete ^{below} some
At 200 feet below
top a 100 feet also
See long term cut
as near point
of two members —
deep lenses, probably
of red sand, seen
down to the bottom.
Another 200 feet
occupied with the
Nummulete beds he
denotes Leam

Quare with Pholady
Mrs age 200 feet
above sea.



Behind McKattan is
wady Dupa through
land red sea and
Lehell Funa very up
to old Egyptian,

Ear to compare
Grand series
with same cliffs
beds of Cairo &
McKattan.

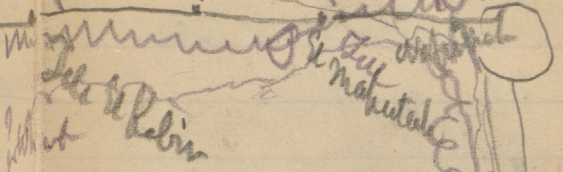


Faint, illegible text or markings, possibly bleed-through from the reverse side of the page.

Kulakstat

Buket Mahsain

Ramures Highed pigit
Mundak



Rebin

Mahmutal

Faly fda

Serepida
Gel Serepida
Makafel Serepida

Guan
Gel Atlatat

Zoga cuts 2 of
8. from one
vine trees,

abundant water
by sweet W
Cannel

Many Duke palms
and dates,

Sand some keep
to appear
both sides

but still distant

Abu Hamed father
of dygny
& distant to Sault

Simple also
at distant on W

Desert after
this when
of Mr. Hansen
of Tel el Kebir
found some
pencil
Lead deposit
pencil
below

More also in
strip of red
sand & gravel
on both sides
road keeps to
S side in the
desert

Tel el Kebir
gray clay
below desert
sand

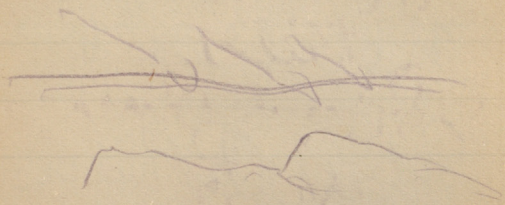
Beyond Little
Ketchikan
Narrow strip
of verdure
with paper
trees
O Sand dunes
on S

Emeralds in
valley

Sand dunes
and O swamps
in valley

Desert sands
advance
in a chain
swimming

of the of great
sandy beach
culture of
vegetation



Beyond Makahau
gathered shells
of all kinds
Cresset went
with him into

beach at Makahau
in sight of
beyond coast
station

I much to
count
old flammato

Howard Reunites
Station

Country cutting
Member into
desert sand
no culture bubble

Site of Oldham
now desert
new signs of
former culture

L. T. J. J. J.
all desert
Scrub and
white soil
well
? now a
secret
Thurs in

Cuttings and
Sandy

Still some Cullen
Vata, Date
Tree, Acacia,
Wines, Gum
Mango & Green
fields as
far as W
side of Road

Seems to be
modern he-
darned

At state way
border of
fields

Goes on to
feature that
with sand dunes

Looks flat
all way to
S. of the sea

Almost to top
of Potter Lake
may have been
cut through
& is in part
reclaimable
now

Currents but
flat nearly
a cutting

Potter Lake
Broad there
if water were
high part
of outlet

Saw place
where comes
Seneca at
Fossil State
near embankment
& Reeds towards
Pitt Lake

May be
Pohokuk
Seneca very near
Dumble Run
here

? as to Owl Tapha

Seneca very
escarpment to
North side
Museum
Plants seen

200 ft



May this cleavage
have been the result
of bedrock

The names Migdol
Pekahunt, Baal &
Zephon — may be
localities but what
they are I know,
The first three points
are the G. was before
another near another
opposite, perhaps across
the sea

Pharaoh at Four
Mile at Ramess
one day W of Pittman
Edge of Wilderness =
Moses, Sea
Wilderness of Ethra
elsewhere

Pharaoh unable to
murmure of Moses
of Is. — Moses unable
to know what cause
of Pharaoh

Speakers of camp
at Elmore and turn
inwards from it,

Liver & Alaska
Jan 11

May 1st Sandy
plain say 10ft
above water level
in some places low
enough to be over
flooded at high
tides in storms
Covered with shells
in many places
& in some hardy
with conglomerate
worked for a while
I holdy recent shells
Saw one bed 3ft
not bottom

Inland if this
is a higher sandy
plain never
interrupted by
20ft above sea

and all shells
also

Found a lot
plan because they
were in fact
found but with
jules were
the trends which
are in terms
some of these very
recent,

In copy the
plans the shell
is a lot of
them were by
Carpenter as
representative
of the Alaska
It really shows
in every one

same for the name
Red Sea.

Alubais as
represented on
Ballant's section
as far as I could
see except
that Orreabawa
Madulites occur
at that bed not
far below the
red band.

The base of gray is
at 150 ft above sea
and Madulites
found near to 15 ft
above to Ballant
The highest part is
50 metres.

If individual but
to South a little
west

The lower beds
are hard gray lime
stone with white
flesh in places
and often
nodules.

Color varies
then an olive
brown gray shaly
layers

Below this is
red & green shale
by color & fine
then white limestone
Below this is loam
with casts of shells
Mammals, earth
worm *Succinea* *Pecten*
etc - all as
casts in hard
lythe or limestone
which is soft

like the volcanic
flows dark
Brown.

Side by side
vertical sides
in flanks of the
Erosion of
sea cliff and plain
below level of
sea level. All
between the
stratum cliffs
has been cut
away.

Case of massive
dendritic cuts
level plain top
high cliffs. No
dunes here
like the others
at least not
clearly so
but the foot of

The bank of Tuley
a base of gray
is what you
to Camp & Spring
Tennessee

and there are
indications of
hypertension

The fault planes
seem to be faulted
down for high
hill, makes
a repetition on the
face of the cliff
as seen from a
distance

other wells on
of hill seem to
be on low level

At the margin of 2d
dressed leather in
my by coffee also
seen —

Sempra



Thun Pluten
Fayid

Copy Place
Near Steer Fossil

Opposite Label

Milk Street

at Plum
Mehes

Water mark

Old Cellar

Ground

Sweetwater

Canal

from Steer

Water

is contained

in the Tank

So much

Alt &

Some cellular
with direct

injection

Wady Tumulat

Best days

Many palms

& other trees

Good plan

Good water

Graph over

better homes

Need people

Need cattle

Many sheep

Hard country to
leave

ar
ty

ny
ty

he
to

elo
ny

le
te

te
p

—
—

Tuesday 15th
Left Cairo on
Steamer Nile

United S.A. Karak
8th of Memphis

Tenure 100 ft sup
pyts 100 ft
ould of land
Sewerage near
weathered

No fossils seen
Seps Carey witness
Vid intended to
be faced

Trunk of Fe
beautiful Sulphur
on fine white stone

Note no canals, houses
or hay

Trunk of wood
much cutting
no pines

Extreme slabs of
gneiss, some
abundant part
wed into alabaster
Sarcophagus of
dark quartzite?

Waly Gang 16
Ch Javar Wasta
Wpente et are
two lenses on
suspension of the pattern
Lyman there are
of rope

Below River bed
low water - low
lenses come out
to be hole of R

West of the great
reef of Lagoon

Along me the
allow deposit on

Transfer to last
Thursday July 14

Opposite Babbleh 100 ft
level of dunes
quite out to sea but
some reeds in a
bay for some distance
to south.

Thursday July 17

High cliffs on shore
like the McCallan

stone beds on top
have a 100 ft level

Level of Fady's

Beehive houses here

Some murex

at level above

main cliff are
old town site

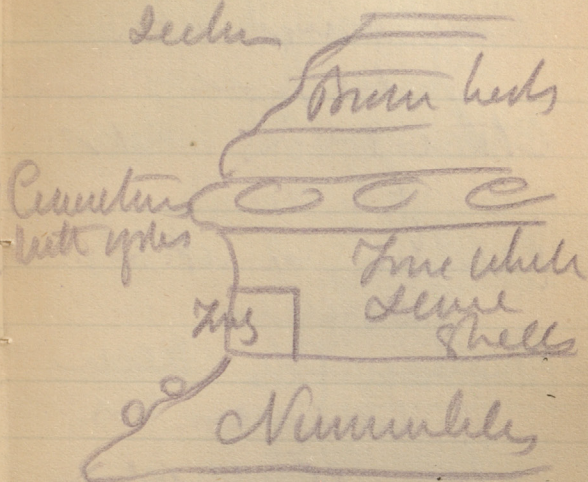
See & Kelly 2

hills then fall

away in slope

Beni Hanan

Section



Very quaint of Nam.

July 18th Jay

Tel el Amarna

Syrian hills

Low flat creeping

in from W. side

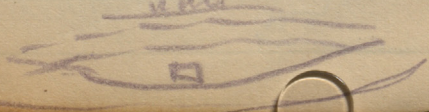
quite under

Note Beni Hanan

one on plain

now united to

main arch



Saturday

Leah Lake above

475 ft high

fractured with tuffs

? Matant =

White Cryst

Hard Gray

White

verrucular

Gray verrucular

White Lentic

flints

centric

x Hard Gray Crust

Here a reddish soft base

Thick white

Hard gray verrucular

Tuffs

blow of black matter

above of pure here

plain as east

side about N

Leber fari
high cliff of fari

Leber Shek Heudie
high cliff on land
? old banner

Note Flints sold
at Afrowal

Sunday 20th
Beyond last cliffs
high bank on
high alluvium

20 to 25 ft
like old lake Pan

Some part hard
pumice &
gray, - cracks
under

13
but cracks

Lebel Fork May
by distance between
Rip & Camp

Lebel Fork



3rd intermediate camp

P 7 11 11

Monday 21st

Between Horn &
Ranch great heavy
to east

Sybran hills
project by high
and broken
but with flat
top forming from
only when Ranch
is finished

of the hills

Most of hills done
before now
taken down and
alluvial plain has
25 ft

Hills S of Dearden
flat but are
high with course
dip to SW &
high faulting

Walls of the ...
72

Monday July 22
Vincennes Ramal

Wrote 4 sets of columns

1 Marble

2 Hard sand & clay

3 Marble dept

4 White Limestone

2 fine

Marble & Stone
Slabs 20 ft long

Column foot of
Hard limestone
granite

Marble

Marble sand, Limestone
20 ft long. Marble granite
chert, basalt
Compliment a granite

Wed 4/23
Wed, Label Apart
& Keep Sample

Gravel Subangular
Rounded, same
as mud gravel
in Run of mud
Limestone hard
Gog & flint.

Some stones that
are 1 ft diam
at bottom, some
of 1/2 ft and
band of hard
sand, cemented
with small stones
& flints.

Later broken
in all shapes
but flakes
can be
identified.

Surf gravel
near bottom

Further on depth
becomes deeper
& more compact

Course from 4 ft 1
stones 1 ft

Sty Clay 1 ft - sandy
hard 2

Gravel 1 ft 3

clay as above 6 ft 4

Gravel 18 ins 5

6 in clay 6

3 ft gravel 7

Whole monument
consisted of
my ship except
some layers of sand
about 1 ft
above no 1 on top
found more sty
clay some plus
3 ft thick

Total depth at
this place above
bottom of way
which seems
above from
20 to 25 ft

Further on near
mouth of Run
depth of 12 feet
as below

Gravel with large
stones some
2 ft long
rounded stones
including timber
bed of clay
7 to 8 feet

Hard dry clay
cut with
shoes and
sounding
2 ft

In an open day
seen to have been
washed down
patches as if
decay of my mat

In way what
clear sweep by
Insects many
then as large
as large as
grated

Further on some
material on
the surface
formed by deep
cuts of mud
Insects which
have buried
large stones.

There had been
the water
but sometimes

blocked with
stones swept
by floods.

Flints are common
throughout the
gravel weathering
but some are
by hand some
in the place
little hills
with some at
one side and
many flints among
some of them
when Nutters
was prepared
shape
but strike oblique



is wholly
identical and
no evidence of
Man -

Mountain being

there are many
groups trees &
about 750 ft

Some humeral
beds of white &
hard gray beneath
the surface

At base are ^{hard beds & above}

recciated beds
of clay of green

Fossils *Phalasma*
Cardia etc

Emb of Sept 1

Cut into whole some
stone because
depth so far
unhappy we fear
of hard when
Lime.

Broken plants
my plant near
the bank;

All banks here
under the trees
are for dry beds
with some
also loose gravel
beds, not
consolidated.

Near summer sun
beds of juniper
summer or
winter

Thursday July 24

Visited Naueson
Lumber at Dept
at Pohre and
put sample of
Rameses at
Midd. above,

Note Clapnet
Reclay these bars
with sandstone
you find in
bedding in flat
West side
map showing
of strata. There
have been as per
stated ~~that~~ strata
cut in walls

Bed of ^{grey} clay at
foot of hill
The hummocks

Put by W. C. C. C.

People of Egypt

Onion of arts & Greek

Bridges to be built

Complete eddlaty

French rule & progress

Hardy nature

Water furs ^{Women}
Shades, Dandy, ^{Waters}

Not take happened on

More specimen, ^{and}

Subject paid ^{whom}

Capt. old ^{republic}

Thread paper ^{of}

our responsibility ^{of}

Iron clay bricks

plastered with
hands

Captains of day

No furniture

little down ^{under}

white Road

attention | let the

Other ^{Side} ^{Company}

Imbricated layers occur
in soft white limestone
At Let's tomb must
be 100 feet thick
Mott said to be
180 ft

Specimen in
cl No look must
be along column
line of fault

Friday July 25
Sitting at work
before Professor
at Lord of Samuel
Lecture

No 1. Western
granular white
marble with Crk
bees of alabaster

No 2. Hard compact
structure very
white



Handwritten notes in purple ink, possibly describing the insect or its classification.

~~Maybe variant
of *immaculata* II~~

Note

Said *Abdomination*
of *Jensen*

No 3 Hand quartzite
and pebbles, a
brown column has
a Carouche on
front +

No 4 Limestone
Similar to No
2 but prob from
diff quarry

No 5 fine, ~~but a~~
fragment of stone
similar to no 3

No 6 fine but
fragments seen
of sandstone similar
to 3 & of red granite

Each statue has
been about
20 ft high

Much water than
at holes but
still runs

dumped and
turning & at

one place blame
of rock

[Faint, mostly illegible handwriting, possibly bleed-through from the reverse side of the page.]

50

Some but
looks blue! size
any one set
Adm of Locum
Limestone

Run bank high
Index of 100 ft
tenure in many
places

July 26

Leaving with
boat chain
broken and
pitting toward
me with
100 ft tenure
at foot
Lebanon chain
high and low
tenuous with
wide deep plan
in front

Amphilegma
Limestone like
Burr Hazard

+ Put upper cut
Put El Kab shell
Eocene

man

100 ft
of
from
with
from
in

Near El Rob

gray shaly soft
beds prob. Cret
appear under same
stone & appear
to have slight dip
to N. Well
after this on
road side as
mine left has
hard shales above
and soft shale
below +

Old pyramid
at this place
specimen given me
G. D. Saurin has
Oreia & Pleutite
in buff limestone
same as upper
Mottallum at
Cairo

[Faint, illegible handwriting, likely bleed-through from the reverse side of the page]

[Partial view of handwriting on the adjacent page to the right]

Sunday May 27

Found Silesites
Membran Sandstone
Closes in zone
for about a
mile with cliffs
on both sides &
the edge extends
indefinitely. We
found out
clams. South
of this shelf
and local
country occurs
? and cause
with the main ridge
or bank of sand.
Show a fault
throws down beds
to south. Repeats
them.

Great quarries
of gottos here

[Faint, illegible handwriting, likely bleed-through from the reverse side of the page.]

[Faint, illegible handwriting on the right edge of the page, possibly from an adjacent page.]

These strata, there
appears to be in
one place an
overlying mass
of Pliocene sands
stone with much
false bedding, of
Cott. Tertiary like
Lille of the
Cairo

but the coal
beds are somewhat
curved & faulted
and the beds
not mentioned
before & the
consequently
superimposed

Kim on the
and above the
side partly shrouded
and a very fine
bar to table the

[Faint, illegible handwriting, likely bleed-through from the reverse side of the page.]

[Faint, illegible handwriting on the right edge of the page, possibly from an adjacent page.]

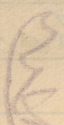
of loessal forms from
waste of hard &
soft beds

This continues
north to Apouan
but before reaching
this place many
sandstones occur

See figure of
deposition in notes

At one place
hard druse
on gravel road seen
~~under~~ sandstone

At Apouan
sub-sandstones
in some places more
than 100 feet
thick seen to
rest on old
Cret rocks



Spiders
at present



Simple down of the milk

Railway cutting
at Affron 301 paces
beginning E side

vertical paces
Masses of Humblebee
Schists strike N 10° E
Mud weathered at
surface ————— 34

The same with
Many red feldspar
kerns ————— 37

The same with
Coarse granite
Schist ————— 41

Ortho quartz gneiss 7
Schist ————— 7
gneiss & Schist 3

Schists as above 7

Course Ortho gneiss 20
not beds of
Schist

Diked with mud
black mica 23

Gneiss & granite being 7

over 186

[Faint, illegible handwriting, likely bleed-through from the reverse side of the page.]

[Faint, illegible handwriting, likely bleed-through from the reverse side of the page.]

[Faint, illegible handwriting, likely bleed-through from the reverse side of the page.]

180

On 186

Short with great

granite veins 53

Large from Gen 6

Council, ^{red} orthoclase

Measures of Ambladen

short cut 66

Many granite

veins one of

than cut

Mea nests

No. 311

Stikes elsewhere

observed at S

and at 10 W

latter at Phlar

Small veins of

Delphur red & of

Quartz with clay

in this district and

there are also

ledge masses

of coarse red iron

Nov 1880

24th Nov 1880
Growth since 23
Large fine buds
Growth, yellow
Mosses & lichen
about 10
Happier growth
and one of
them with
green buds
on the 21

25th Nov 1880
Growth since 24
Growth on 24
Growth on 24

26th Nov 1880
Growth since 25
Growth on 25
Growth on 25
Growth on 25
Growth on 25
Growth on 25
Growth on 25
Growth on 25

Blended granite
and gneiss
dunite both of
which have
been quarried
by Egyptians.

Old Nile channel
runs S from
Thebes & then
N with both
with sand
& some will
find about
50 feet above
present level
of river and
at least 30
above top of
excavation
West of Middle
Thebes

[Faint, illegible handwriting throughout the page, possibly bleed-through from the reverse side.]

[A large, irregularly shaped area of the page is torn and stained, obscuring the handwriting underneath.]

The whole surface
has must have
been of that
sandstone when
an benches of
weathered Crpt
rocks with sharp
precinct outline
have been built
till at Crpt
align to lower
channel now
occupied.

Rocks here
weather into
great rounded
boulders that
of boulders
formation

[Faint, illegible handwriting, likely bleed-through from the reverse side of the page.]

[Dark, illegible handwriting, possibly a signature or name, partially obscured by a tear in the paper.]

Phulal

Monday 28

Mr. Bija Rev

Phulal and

Nephew Manu

Shun great

humbled

of course had

Leopards for

Curry like puppy

and

Under this fine

red sweep

Next Black house

blender not

Next fine red

sweep again

Next corner

back again

Below this

The Railway

Cutting serves

on edge and

Strike N. 10 W

[Faint, illegible handwriting throughout the page, likely bleed-through from the reverse side.]

[A large, irregularly shaped piece of paper is pasted onto the page, partially obscuring the underlying text. The text on this piece is also faint and illegible.]

[Faint handwriting at the bottom of the page, possibly a date or signature.]

Top of hill
on Bigu Ind
100 feet above
level of temple
on Chulae and
this part the top
of the mountain

Further down
the capped by
the sandstone

Upper part from
penetrated by
red sand and
black appauke
veins

Lower part
filled with
orthoquartz
veins very
common

1. Weathers when
exposed into
faceted
blocks

River bed at
Cataract cut
down to older
granite and
hard granite
V surface formation

→ Surface in
many places
must be
V granite seen
to peel off in
shells

Section at Philae

Biggish

Biggish

Not found



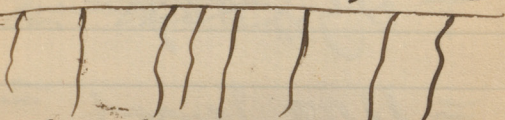
* Coarse feldspathic rock

Fine red gneiss

Black Hornblende schist

Fine red gneiss

Coarse feldspathic rock



Dark gneiss & Hornblende
beds

Total about 130ft

Suburb of Philae

24. 4. 18 01

Philae has granite
map on side

Buildings of Nub

Sanctuary of the
Redspot

Local time

At Mpona
Sent course of
Olden Sea
CNS

Market 300 pms
+ 800 pms
= 1100 pms =
3000 feet

unless repeat
Intimate f
then the
has been
not one of
marked
line of bed

Five polishes
in granite of
Calaveras

Lower part of
Kub sandstone
of the conglomerate
of old rocks
and redder
in tint.

[Faint, illegible handwriting]



[Faint handwriting visible on the right edge of the page]

Bank of effluvia
Railway cuts
Series of sheets
See as per books
Part of the as
low forming
Some sheets
are seen
strike changing
to ca 700 E

On these last found
beds of Nat
structure - a
peculiar bed
intending. See
specimen

Nat sand has
Cuprint below
but thick
above sandstone
preserved in
pieces

above the soft
mass beds of
purple calc
limestone
of sandstone life
again

How wide like beds
? what
see specimens

Wide mud being
1st ridge

45 to 50 ft above
mud

Red of old channel
base coarse
sand & gravel
& some
rocks

Return

Tuesday May 29

Went out at
2 places below
Km Onbo

time height of present
bank say 40 ft.

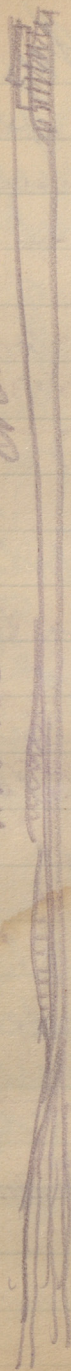
appears to be rounded
patches & ridges

Sub Sandstone
all way to
Km Onbo &
part. This
white chalky
sandstone when
comes close
to bank of river
& must indicate
fault in middle
of criticism &
Evans

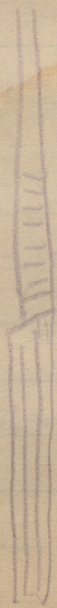
Section of ground to part of hills

W. L. Lane

W. L. Lane



12



Notes Sandstone appears from
 100 to 150 feet deep to
 100 feet deep from

May 30 - Surin
May 31 to Chydor

Nub Sandstone

& Buzan

Surin

Wp of quartzite cliff on E side
Lithol is Surin
a July at Borjaba
~~at Borjaba~~

The Nubian
Sandstone is con-
sist of hard
thin beds,
with soft per-
meable beds in
upper part
& patches of
hard calcareous
sandstone
This is evident

That the Sand
& Muds are in
every bed
and also
fossiliferous

Some of the
more hard
flagged beds

They occur all
the way from
Morrow to
near Edin
about 50 miles
but from the
west and
west Arkansas
batter of
hard mud

at Slnlet p
about a mile

S of this is White
Sinter at
Lower level
Fairly
clean

Immediately after
Cephalon of
Sundone on shale
cliffs of pinkish
Cold Sinter
appear on the
bank
? age

Cephalon of Sinter
is a little above
Redepayak

Below this
low banks
little seen
but signs of
Chalky times
stone and
soft red beds

Some distance
below Edgemo
Eocene appears
in hills on E
Banks

Some chert
Pegmatite
as at Benis
hassan

Approaching
Thebes

great number
of deep bays
has commanding
effect

Eastern hills
lower &

very curving
from below

General dip
up to S E

& more on top

John G. Gandy
Knox



~~Abby~~ Abby Jeff
Purple Set

Chapels up
Sandstone
Cuba and
Sandstone
at end

Walls, White
Sandstone

White Temp
Next Sandstone
& Slates

Sandstone
for Sault

Myoko Ferry Fly!

Temple Site 1

build of Nat
structure but
Sides of chambers
white & gray
Some time all
Masonry whitewash
Displacement
Masonry colored
Chapels Sides
Some time
Plaf. Nat sand
Cut into unit-
tation rocks
of whitewash

Small temple
Alab stone
Granite pedestal
of stone pedestal
stone pedestal of
granite

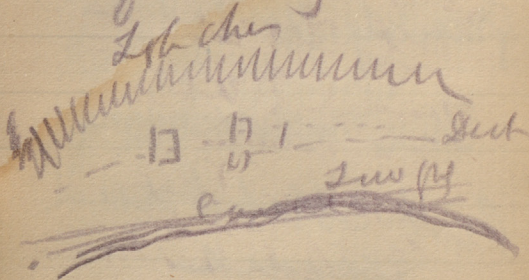
This temple
only doorway granite
In the Dr. Granite
granite pedestal to
shrine

This alabaster
Arch of stone and
stone
stone pillars
stone structure
below, some above

Abzdos build
at foot of Sphinx
Chain

in amphitheatre
of high cliffs
Edge of desert
fairy a net
of fertile plain

Channel of Nile
or lay part
high near it
fence



○ Bellou

When wide part of
Lebanon side
ends before great
mountain reaching
out to Kerech.

folded seat of Egypt
power than
Marramets came
from side of Rosein
& began here their
agriculture

May also have
relation to our
long drawing of
great bars

Whether has reference
to hills into
Lower Egypt

Lehel Nahay
below Rhoda

old town at
foot of summit
summit

& New town with
Beckman houses

Round top - tower
or square or
whitened ones
further up
summit has
of pines

No drinks

for
Ma Rub d Allah

Note Place

the Baggeh
Capped with
fun 2d

also keeping
man

what was
to find
higher
has cut
of where

on Bygel her
peaks, when
when when
Sandro
remains for
potat

Plural is a
frank.

new fruit
is down to
the camp
with some
to fall in

Cultural an
dyes a vly
fmsvater



Wagon Flat

Sketch for Railroad of Nelson
in notes of Dr. J. M. [unclear]

Schweinfurt
in former times
that Paulaner
Village of Braun
is great manufactory
of gunflints
At this day
people by Skilpud
great masses
of chips.

Pyramidal Lee
ascent

1 Hard Stone
bed

8 inches or
more

2 Hard of unmineral
Bed

3 Other bed
of ~~grey~~ ^{grey} ~~stone~~ ^{stone}
Soft & white ^{stone}

of many ^{beds} ~~beds~~

bed ~~beds~~

with ~~beds~~

4 Hard Layer the

5 Soft white
like the ~~bed~~ ^{bed} ~~bed~~ ^{bed}
Moulds of ~~beds~~

Some numbers

6 layers

limestone

marked

with rocks

& La & some

up

on top

then

This top of plain

Plateau 160 feet

above

Wile mud

below

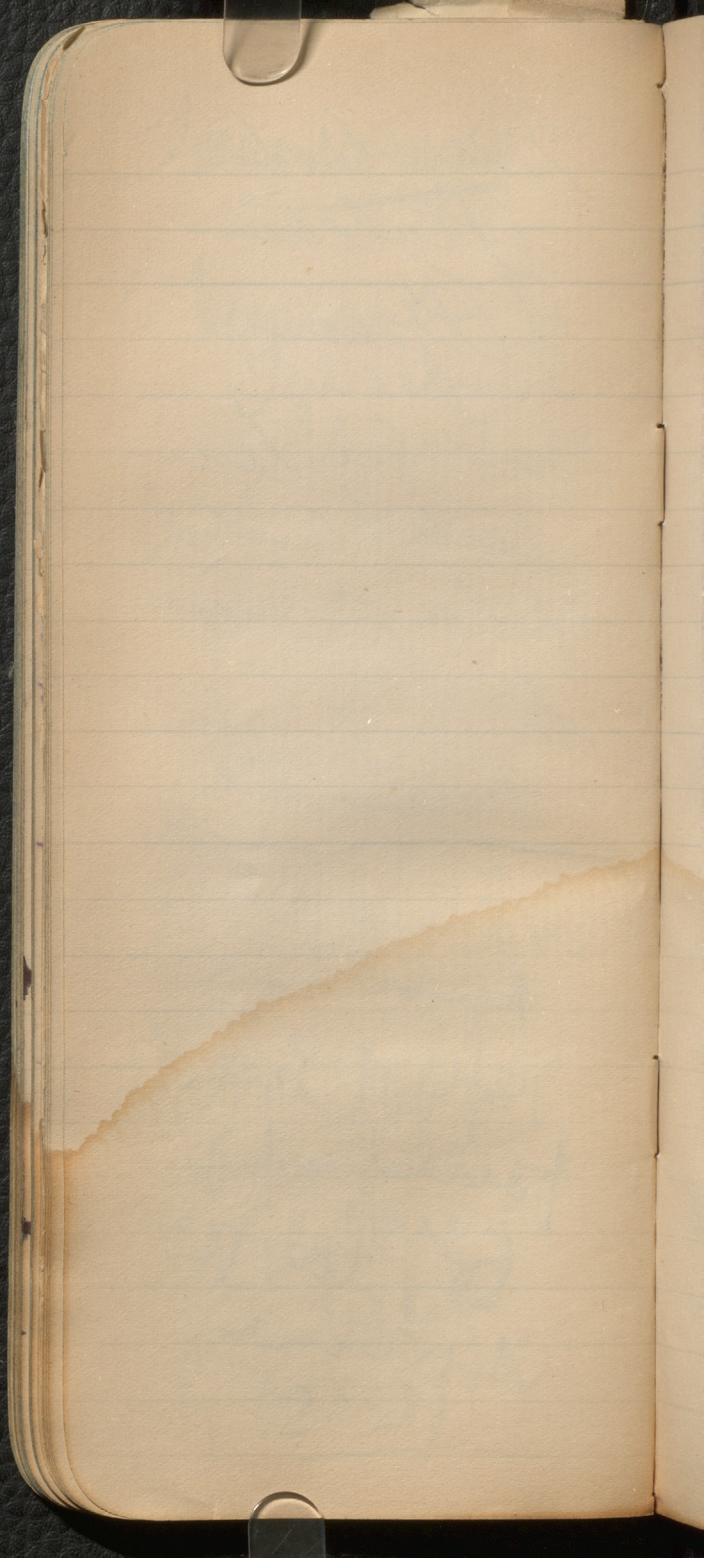
by surveying

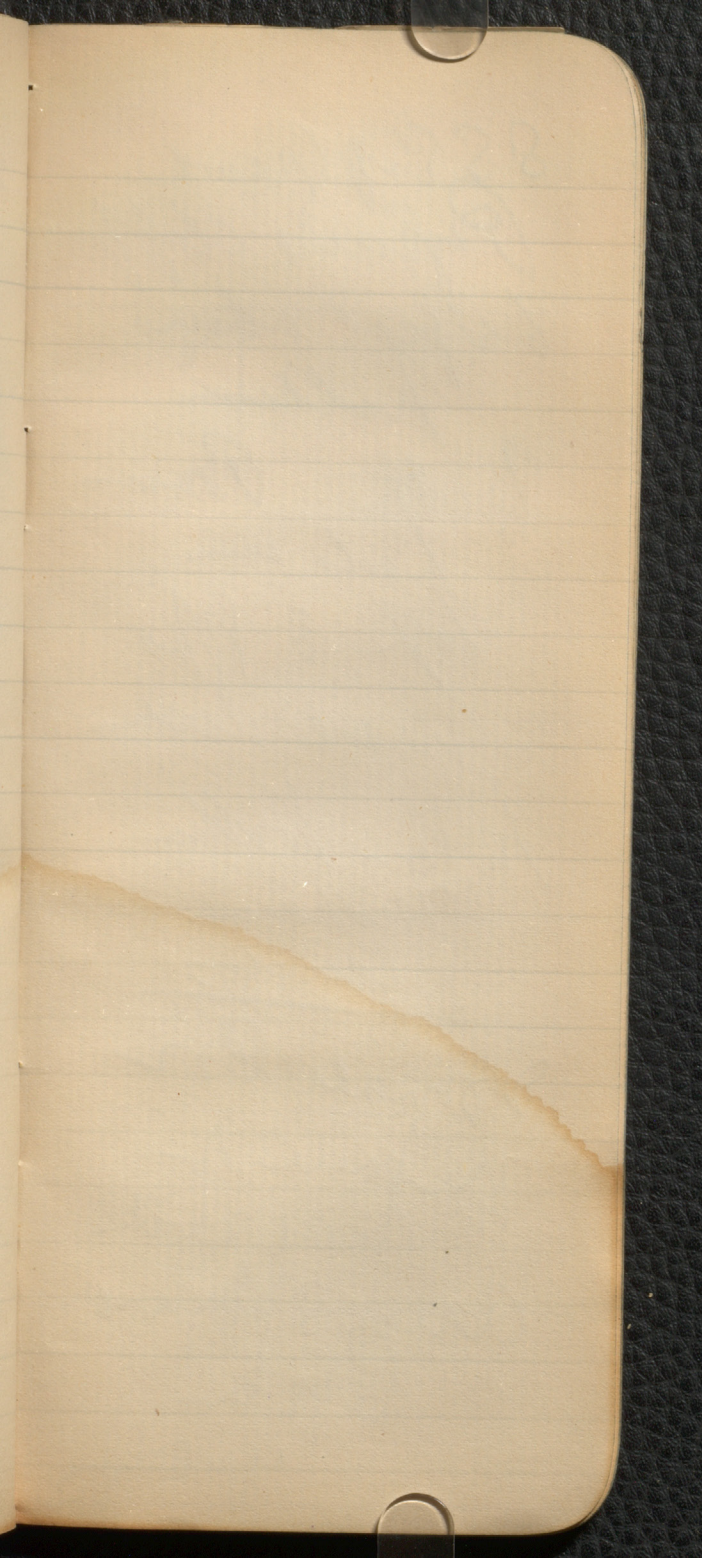
Immediate
Plaque
of Pus

Hard by Ten
with cuts
of large amount
Side of Soft
Mucous

Mucous &
hard body

Part of the
factors due
to the
Mucous
on S



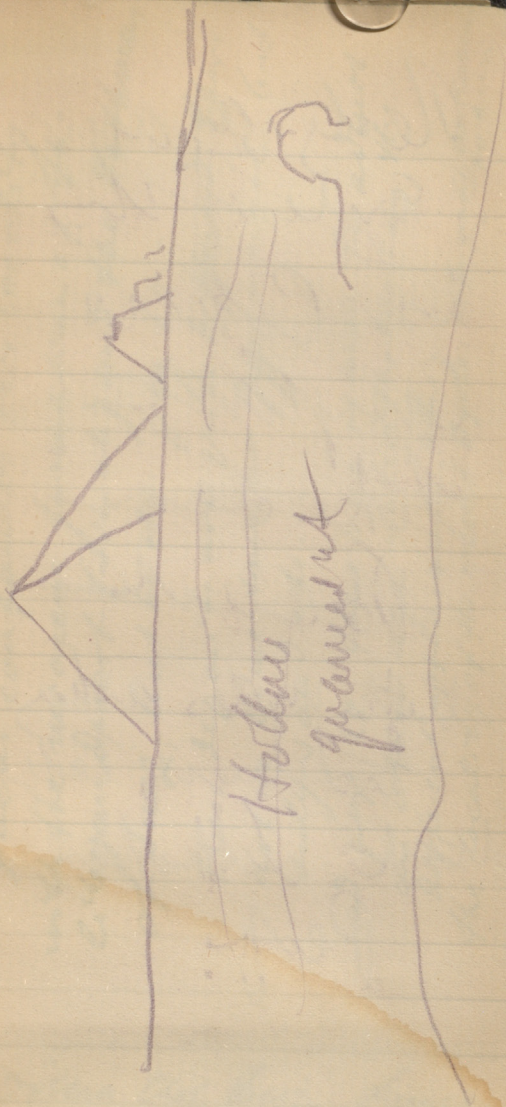


SS of Great
Pyrenees cliff
60 feet above
level

With Brown
beds on
top of Mrs
Ward's work

In the other
McKean
Cemetery

Small Py
renee of
hot rock
and spherule
left in
quarries



Arthur Forekale
in the night

Resty again
S side of the
to course
Complaint
Luhden
Bear

with notes asking
to Linn's ledge
and Linn's
Reef

Fuchs compound, this locality

2
8

Fuchs compares this locality with the miocene formation of the Libyan Desert (Siwah) and the Fathmes of Suez; but he says pag. 25:

These deposits are quite different, there are no limestones, nor Gypps merged, but only sand etc. ...

and pag. 27. There is no reason to admit an other age notwithstanding the different appearance, etc. — The locality of the recent Ogter beds was unknown to him

Orna elot Beji, Lays
Cardium, Pecten
& Plicatula

20 ft

2 Brown clay with
Gypps, beads & white
Warts Pecten or
& Plicatula 10 ft

2
Pliocene Deposits, Pp. 111-112

Theodor Fuchs (= Zittel, Beiträge zur
Geologie & Palaeontologie
des Ciby, chen Würte
Tafel. XIX pag. 54.)

described the Oyster of the Makattan & Pyr.
as a new species under the name of.

Ostrea pseudo-cucullata Fuchs,

As determined by this name from the
Ostrea cucullata Bonn (= O. Fuchs)

Ostrea pectinata cucullata Fuchs.
The distinct order, this species from the

Ostrea cucullata Barn (= *O. Fuchsii* ^{chem.})
living in the Red Sea! by very ^{chem.}abraded
characters, but he has seen only
2 lower valves.

in Sandditches south of the pyramids
in the following family with the
Clypeus after *aegyptiacus* Wright,
Pecten benedictus Lam. *Pecten aduncus* Etk.

Omus *Clot* *Beji*, *Lays*
Cardium, *Placuna*
& *Plicatula*

20 ft

2 Brown clay with
Siprus, *Beji* & *white*
Warts *Placuna* or
& *Plicatula* 10 ft

Fuchs confounds this locality
with the miocene formation of the
Libyan Desert (Siwah) and the Forthnes
of Suez; but he says pag. 25:

These deposits are quite different, there
are no limestones, nor Gypps merged, but
only sand etc. . . .

and pag. 27. There is no reason to advert
an other age notwithstanding the
different appearance, &c. —
The locality of the recent Syter beds, was unknown
to him

July 23 9th

Revised Grand
Flora with
Insects

Whole section for
Bel el Oral
a Cur's Nest

Smith of Grand
I included ridge
part of Grand

along 140 ft Grand
above the plain,
as follows
descending

1. Brown beds
quartz & thin
of No. 100
Orma Clot Beyi, large
Cardium, Placuna
& Pleurota

20 ft

2. Brown clay with
Syrinx, Venus & white
Warts Placuna &
Pleurota 10 ft

an other age than the
2.4 percent of the
the locality of the

[Faint, illegible handwriting on lined paper, possibly bleed-through from the reverse side. The text is mostly obscured by a large, irregular tear on the right side of the page.]

3 White Limestone

2 alternating bands
of clay - (quarried)
quarries & timber cut
Limestone worn 40 ft

gap of valley

4 Rhyolite & White Limestone

in Montaba half way
& Pyramids, see Baedeker
Map. little Schindler's
glaciers Schindler
and other Suleimani
& few numbers.

By 40 ft

Mass appears to be
beds crushed the
springs for the sort
and have been
quarried to form of
Pyramids -

top of old pyramids

5 Nammulite Limestone

of Pyramid Plateau
composed of Nammulite
large & small stones
entirely

30 ft seen

Found to be quite
to upper part of
Middle McRattan

Middle McRattan

Absolute base of
McRattan
probably consists
of Middle McRattan

of White & Limestone
Limestone seen
in bank near
chapel village &
between it &

Ground near
^{at Kalamazoo}
Shuader, ^{Procedans also} Weller
Mounds of Cores
& Natives are
& some of numbers
Cores are 50ft

7. Lower part of
Mudstone Limestone
below other cores
Trace of *Stenoceras*
Species & *dent*
Species also Mounds
of *Murchisonia* are
30ft

Thin bedded *Stenoceras*
in face of cliff & *Murchisonia*
valve but all of *Stenoceras*
Species Murchisonia
are as *Stenoceras*

[Faint, illegible handwriting on lined paper, possibly bleed-through from the reverse side. The text is mostly obscured by a large, irregular tear on the right side of the page.]

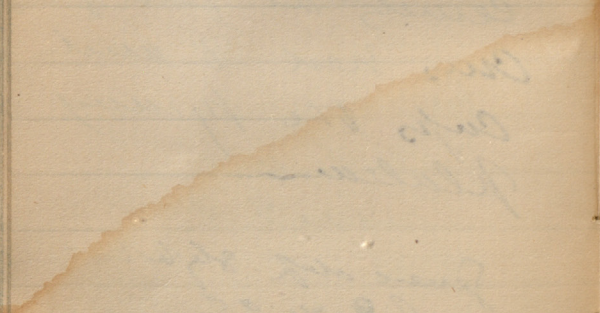
These lenses including
the base of the beds
in the Kattan to
lower beds at
Graham's of the Kattan
but is either near
the same or further
are hidden by fault
The indications from
the latter views
Probably are caused
fault in valley at
east of part of
Cres. West of and
across the pyramy
plateau

General dip slight
S. 70° E

As this would say under
the Kattan & then beds
at lower level. Must be
fault in the valley
on head of the
probably from



[Faint, illegible handwriting in blue ink, possibly bleed-through from the reverse side of the page.]



Held over

Reared head
at Cus next is
a S. E. side on
side of abrupt
acclivity and 120
feet above plain
n by 150 feet
above sea,

The sea has here
cut into soft clayey
Red beds and let
them down in lands
& give them a dip
S. E. Mostly
blue sh. of limes
and a few blue
The roots of plants
jubby have be
buried in the
of Cus. Cylindrical
Smelt with small
in water



[Faint, illegible handwritten notes, possibly bleed-through from the reverse side of the page.]

Larger breeds and
pairs of men early
but one ^{to} Inhabitant
of about may be
an individual found
at top. They were
in appearance & build
with both wolves.
The Beards & muzzles
are covered by
and for a purpose
found on the low
summits of the hills
so that their hair
never has even
a small bit of
will after
the growth of the
Beards.

Several breeds
as speak to
drawing in
with stick

Dualus
Mrs Dupont ^{Car}
Eastern In
Thebes

Emile Brum By
W Sperry
Eunice
Stues

Kelouan

Flint implements
on level plateau
near Spring
 $\frac{1}{2}$ mi SW of Kelouan
and in the pit
effects of flint
knives and
many pieces of
Kamulwood

also indicates of paper
fired powder of
char of the wood
be of Kamulwood
char date

and flint arrows
with these
but old & stained

There is also a
small mound

probably every time
remains. Flint
appears in surface
& especially in little
rain runs
Next to big thin
flakes, some
are but there
have accidental
look

And I have been
of Helman
a lot of cloth
need find
kind much
to the good
part.

off Helman
Flake

When large
shells appear
when seen as
they had depth
at surface

! of an cut spurs
when they appear
and to form seen
at A Ford
from grass
of a mound
with the pen
ground

1889

Malaya July 15

At the place described
was in distance
edge of road
terminated

View from Behind
depth of which
came to Red
Sea —

At Canal and
to Western side
part of flat
sandy beds
like lacustrine

It had a great
amount of
vegetation
also also
Some country
of Chaleby

5 This was to 50 ft
also seen at Elgin
of fossils - red color
by fossils in fossils
? as to whole area
by topped with
at Smith

This material
not needed
Must be as seen
at bedrock

At Gualaya
2 spheres of Spiller
Dune
1 large lotted
of Gualaya
The little present
Dr
Thin of granite
of Gull Chama
see note to Mr

See notes back p
piller rules Imalia

See also

Guffa ^{July} ^{18th}
Feb 17 & 18

My plan how
sandy & shells
with
modern
Patience

Plain & sandy
well mixed
gravel
and beds of
hard gravel
limestone pebbles
? fold zone
of the valley

Saw some
soft venice
shells like
Guffa

Entry Indian
trees, (at Satsuma)
at Lynch place
Cuba, Lynch
Campbell
Chocky
Cunningham
of great thickness
Hindulab, etc
saw Ammonite
at Lynch place
Cunningham
place
farther
surface terraces
of culture on
fields

In some places
aided by out-
crop bays &
rocks

Cut into canyons
same all way
to Genesee
when old land
was raised
in hills &
of life while
and had
Carpenter
kinds.

Jerus 2370 ft
above Gappa
Summit of Olivet
380 ft above
Kedron at
Jethsemane

Jerus 19 ft

The Site of Calvary
of Fisher Home
Randolph V. Co. N.Y.
1871

Cinder, Culm, hill
of Jerusalem marked
with prominent face
opposite to W. side
of side of city
opposite Jerusalem
Gate

Must at all times
have continued to
City Hall, but
cut through by the
cutting away a
grassy, scrub
growth cut a
narrow path
slopes down
to where
where garden
of olive trees
Carpenter saw
opening the
quarters

Trunk near - see
note book

Hills amphitheatre
around
Archaeological

See Jordan's Plan - notes

Block in Mark
of area has
Scraped face
on W side

direction of this face
N N W, also
means that of
whole area

Opposite side
steep cut has
cuts as if from
large mass
of curved alluvium
of unbroken stones

Sketch of face
see note book

The Cañon with
road is not typical
but leads to

Circuit, Big bank
Must have entered
my little begins
this to S as heavy
great arches, colors
very soft —
S end all on
arches below in
large red stone

Feb 10 —

Make an alt
of Oliver to Bethel
and back S
valley of Jehosh
what any valley
of Hummer?

Site of Sepuchie

Roysters in 1738
pubd agreement
against present
church in 1738

Dr. Johnson & Rev
Ed. Smith agreed
against it a further
in 1838

My Father Home
Lap Calway 60
for above Plate

After sup that
Thomas crepey
James New
Shaped Hill
Shaped Hill
of Jerusalem
South

John Doe & Company
of New York
New York

R. D. Merrill
Chancellor
Tomb

Bernard Walker
Drapier

David James
Do

Mr Clarke
Gaffer

Paulus
Scriber
Laws

R. D. Merrill
Chancellor

Reps abt
Calvary

1 outside

Heb 13. 12

Mat 27 - 31

Mat 28. 11

Mark 15 - 20

Luke 23 - 26

John 19. 16

2 High

John 14 - 20

3 Kramer

Mat 27. 33

Mark 15. 22

Luke 23. 33

John 19. 17

Mat 27. 33

4

Near Road

Mar 27. 39

Chick 15. 29

5 Curpewy

Mar 27. 55

Chick 15. 40

Take 25. 35

Take 23. 49

Jan 19. 20

6. Near garden

Jan 19. 38

7 Fern "the place"

8 W. cup in head
of fern.

9 Near Brambles

Mar 27. 48

Mar 20. 36

Fournis, Hotel
Leruche

Mansen

The Temple
and the Funic
Leruch 1880

Melkewett Inaal
Near Gaffa
Bony

Mer Well

+ 67 metres

~~Clay~~ 53 metres sand

6 Clay 2

Cardium

Small St

Put sand

W of Simon

Taffa etc peculiarly
Flour of Shaw
& Kambik

Bole of Apala when
Kambik bleed

Hills with Curwen
Cultus

Medium dip of plan ^{of hills}
Culmen of hills

Seven Cretan

Wood by roads

Just found of Merville
derived by Stone

View of Jerusalem
at Jaffa gate

to Shaluf

Spry flowers of
plain hills

Structure
& Jns

Papers of Lewis

David's Jns

From view of

Caf Mt of hills

Oliver Jethrum
Paths
Mentafes abo
Museum
Bethay is into
Wine / Almond
Trunks across
for but time
Roads of Oliver
Plant &
Lemonade
Stones that cry
Vally of Lebb
of Armon
Ladder purchase
See of cut
Slope of Iron
Inpen
Alma Boutta
Old cut square
Sepuchre
using

True plow then
outside be
W of sepulcher
wall true

True —
old stone
old altar
quarries on
W of outside
side of W

Blown against
St Pauls &
apud —

Clashed a few
Mural & its
rock of altar

Bethlehem —
Planned site
improvements
July —
Palmer sepulch
Census

Went to Indan
Ride over hills
Came
Shepherds
Clubs
Pasture —
Did Invelites
Settle
Gradual up of
prests
Culm spine be
By stone
Half within
Pulau us
Pines
— Inans —
Between
Spinner
Splendid view
of red sea
Moab &
Sleed

Sevent into plan
Lentils heptel
Wild flowers
of spring
Then bushes
2 species
See only

Summer water
Do Prunella

2 species of all
like Betty

No leaves open
mucilage nuts
Mud mucilage

See
Rare day

Run of feet

Charts no name
& prep suffer

Send in case

watched many

Dead Sea

Depth

Beach

old Deposits

Indur

Wahm of

Sea flat

180 Boundary

& Indur

Old Dead Sea

Sp. 100 180

Teche —

Chubbler

Seiche

NY Teche

Beards line

etc of way belt

Chubbler water

La Teche what

Thyridophylis &
Musk Shells

Cumms and
~~and~~ artist

Shuckum

Oliver pupules

Mus on

Grass

Staff of Wood

Reptiled feet

Weeds

Fallen

Scratching

Hulls &

Plus been

Suite of
rally

Again &
Inches Counting

Plain Hills
Pine & Maple
Park of farms

Flowers of Pine

Tree of Farms
Forest

Maple growing up
in places

Remembrance of
Plain of
Jericho

Solomon's quarries
see notes

Sheep from Jericho &
Jericho see

Dead Sea Deps

Dunster

1 Terrace of a few feet with Indian shells, near Indian mound
said not how we placed of them

2 Terrace of 100 feet with small *Semantium* & *Sypris* beds & *Schell* layers
Cut into fragments from one of hard limestone in life

Small also in *Politis*

3 Terrace of the same
Terrace all 150 ft

Recent thin sand
Limestone white
200 *Bolivian*
Parker *Flint*
into Sulphur *Cumulus*

Site of Leombo at
Near well
Cof space a Reulays
enclosed well
Pulled out
Shells, rocks &
Reulays
Pitney, stop
Sunday's work
Sunday's work
Reulays

Flint chipping
from bar place

Two fragments of
Pulley. Upper
has chips of
stone as if from
old blocks

Stone now all gone

Site like Egyptian
towers

Beeds new at
at the of Wady Kelt
where remains
of old dependence
turners

Altered into as
Mela Mura
at Khda el
Haltun
boefun

Top of Cherry Jerus
to Dead Sea
4,200 feet
This latter more
than usual
Plutonium

May 2

Returns to Gappa
Noted rocks & fossils
indicative of return
of upper Chalky
beds near
appearing part of
hills east
Kumuk

Concert this with
John Green to
O'Neill.

Concise shells &
unvalued
with O'Neill east of
gate grove
& further up line
Sphaera &
! Cardium on
surface

Pauculus has
Frustrata

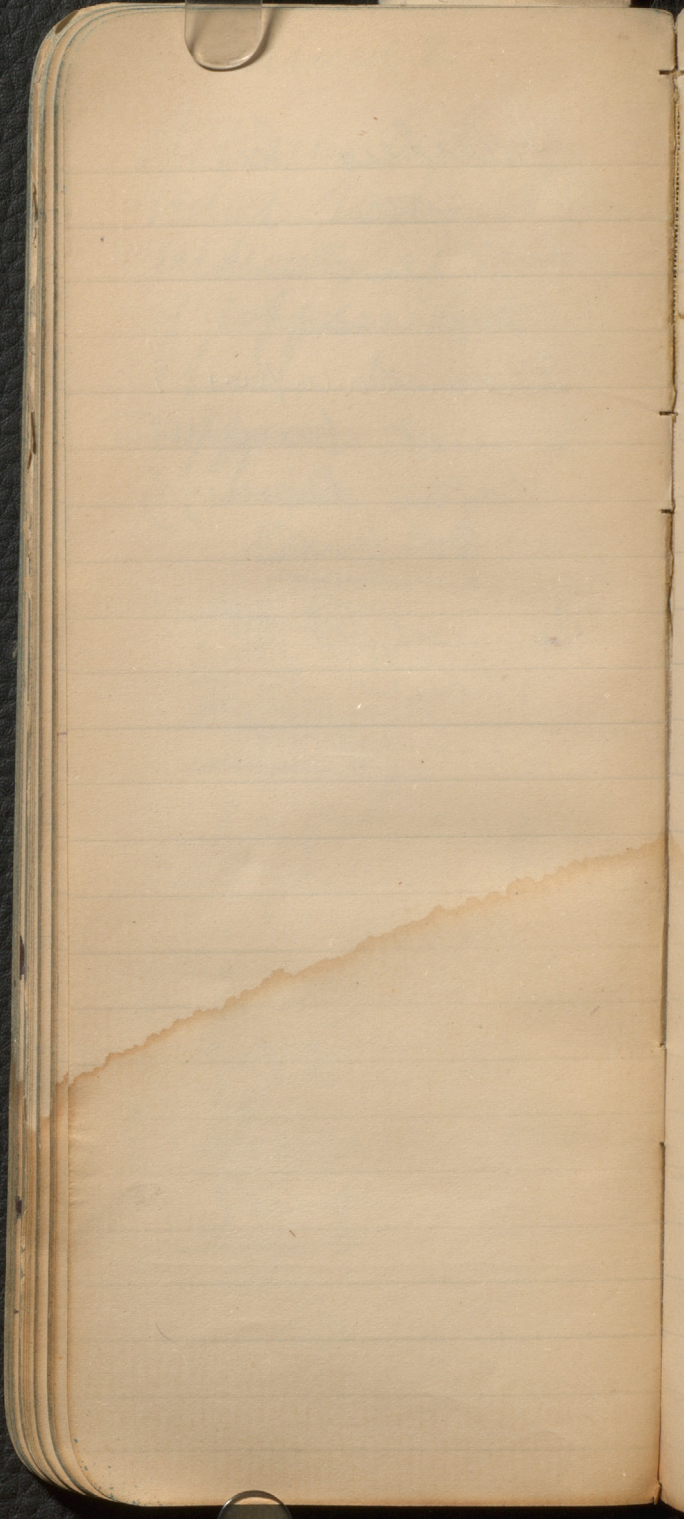
Spoken
Impugnata

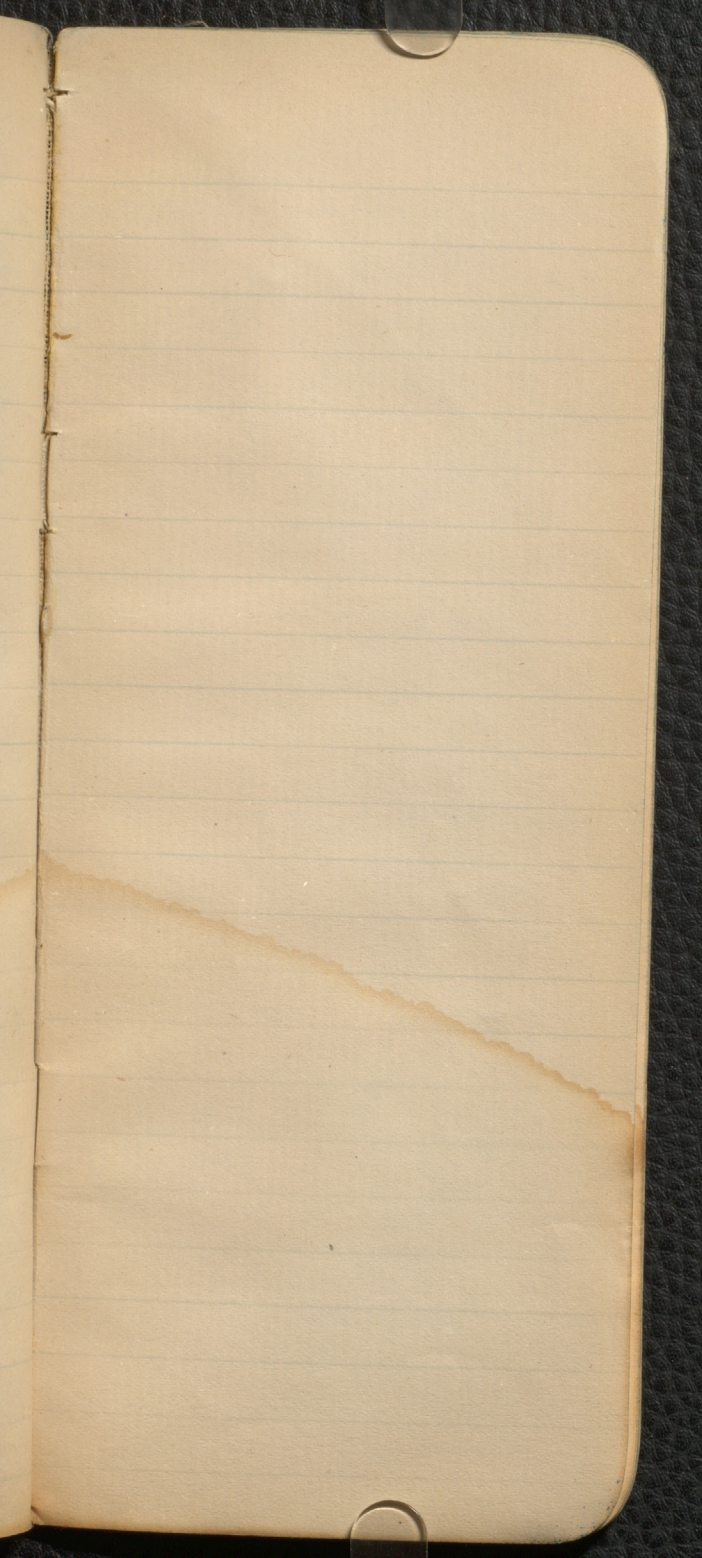
Echinchampis?

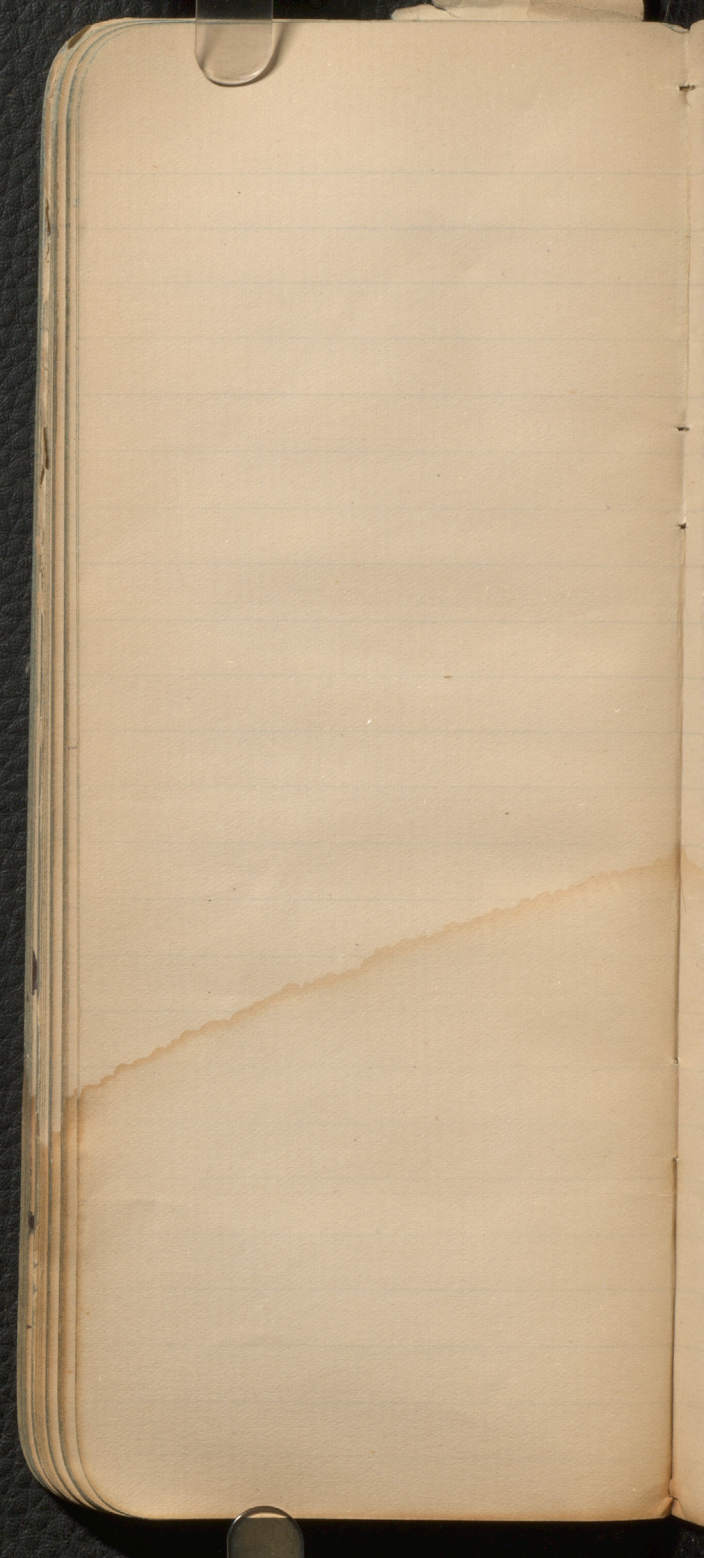
Several chummitis

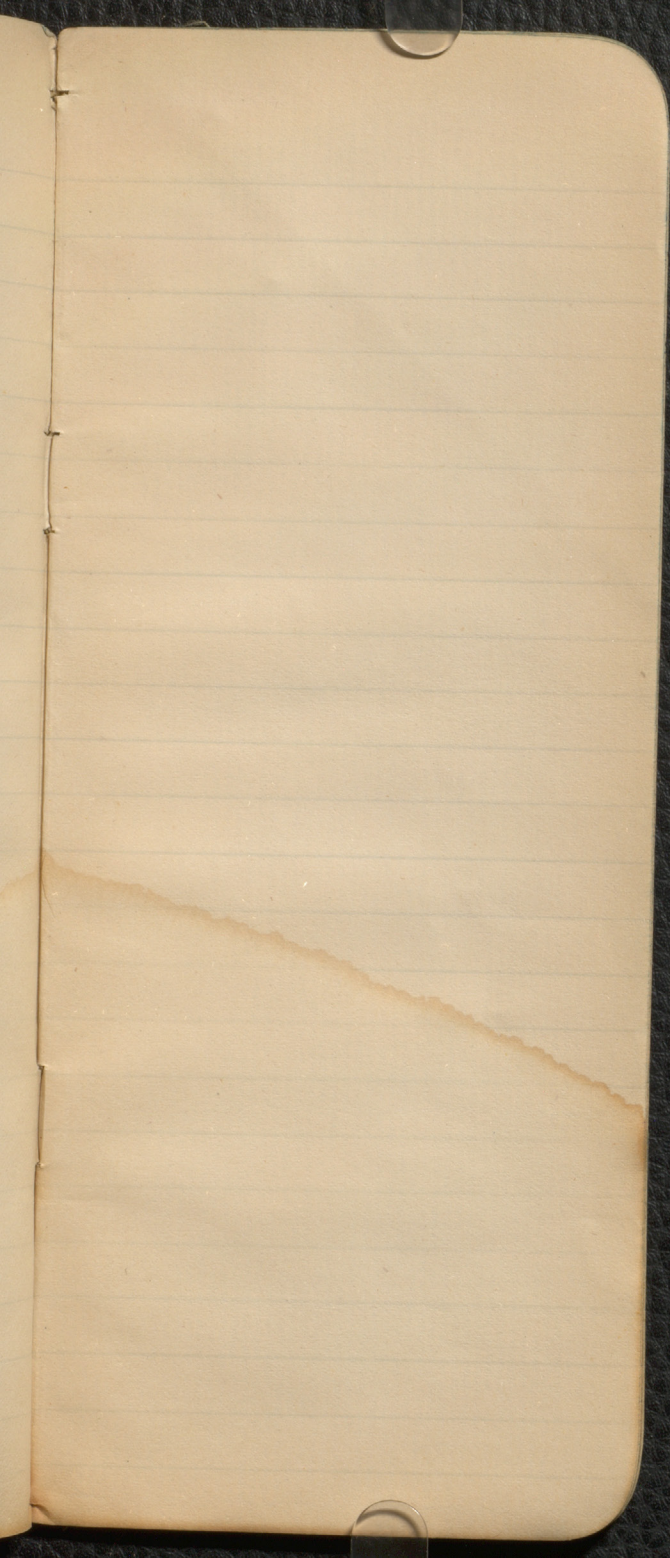
Latin December
pro profane

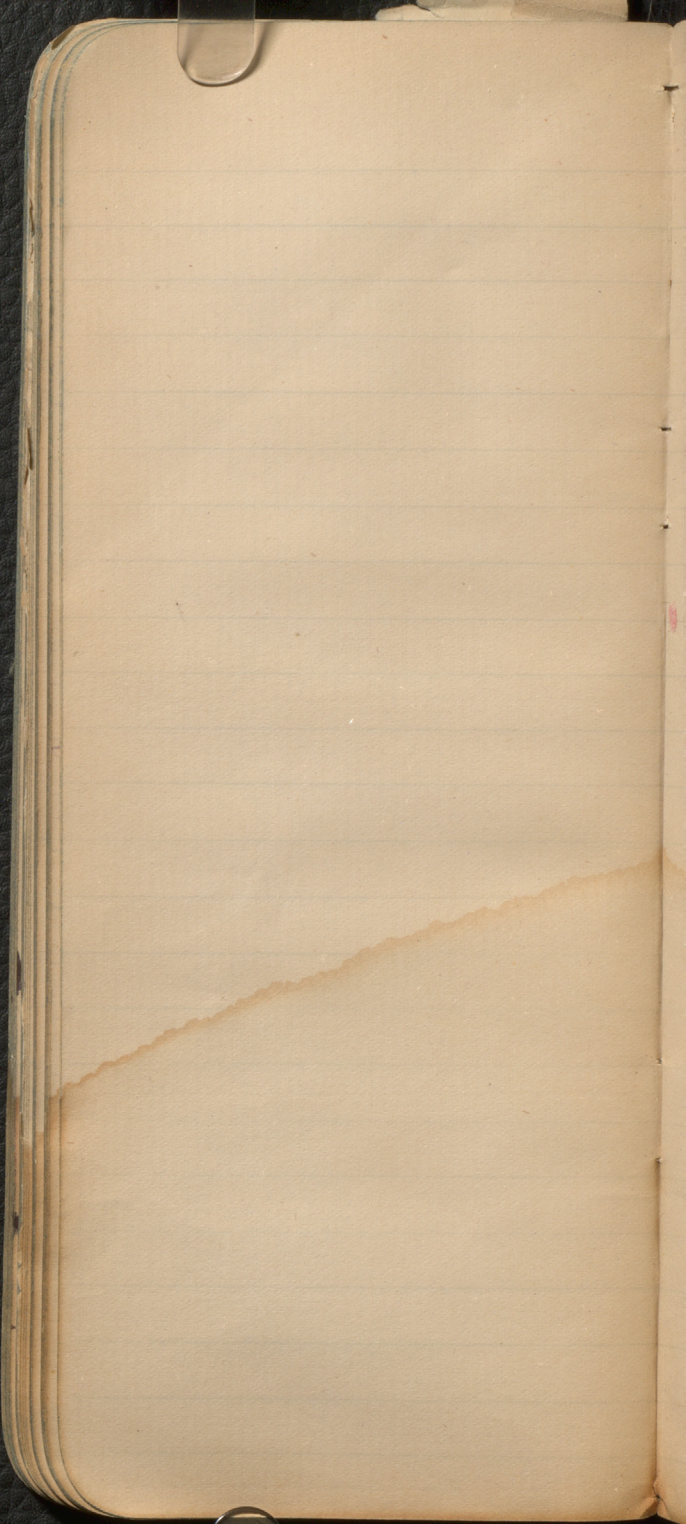
Several of the
Species are
Schumpis

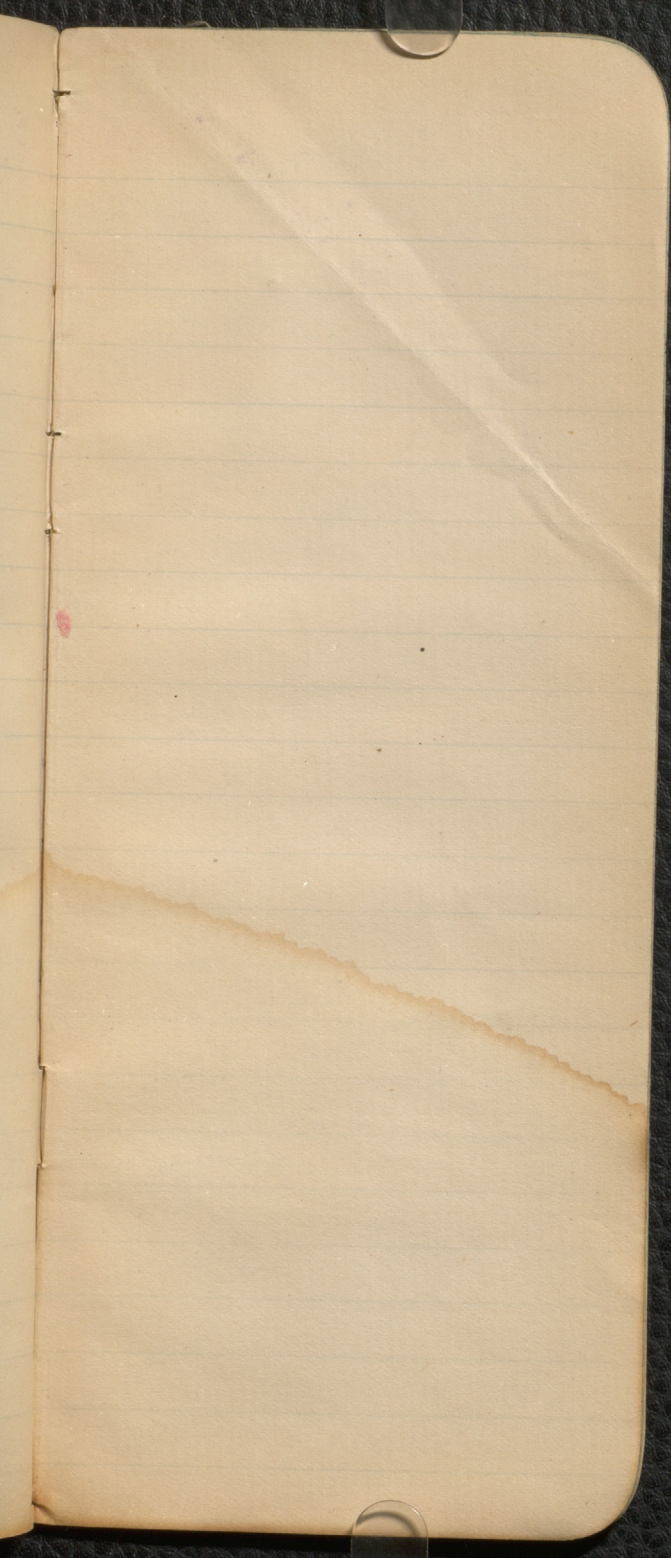


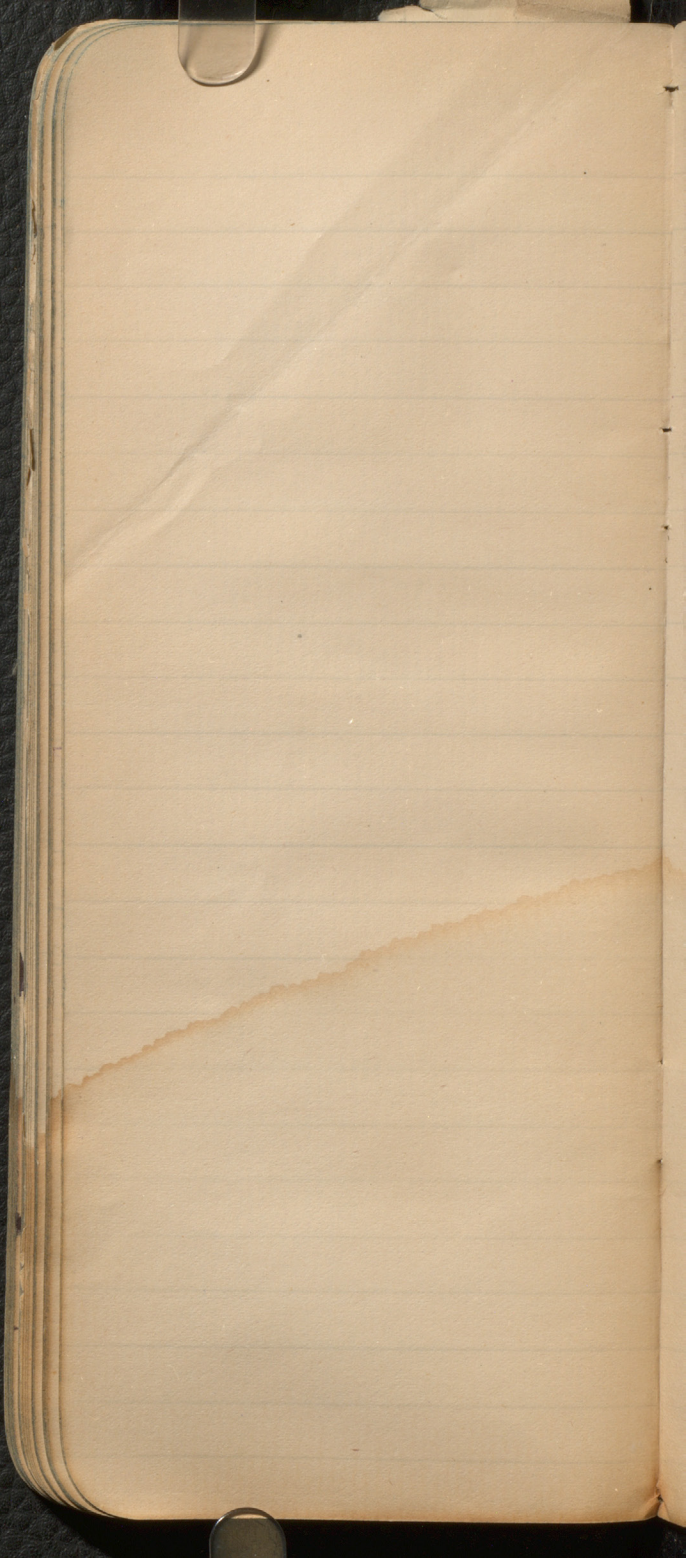


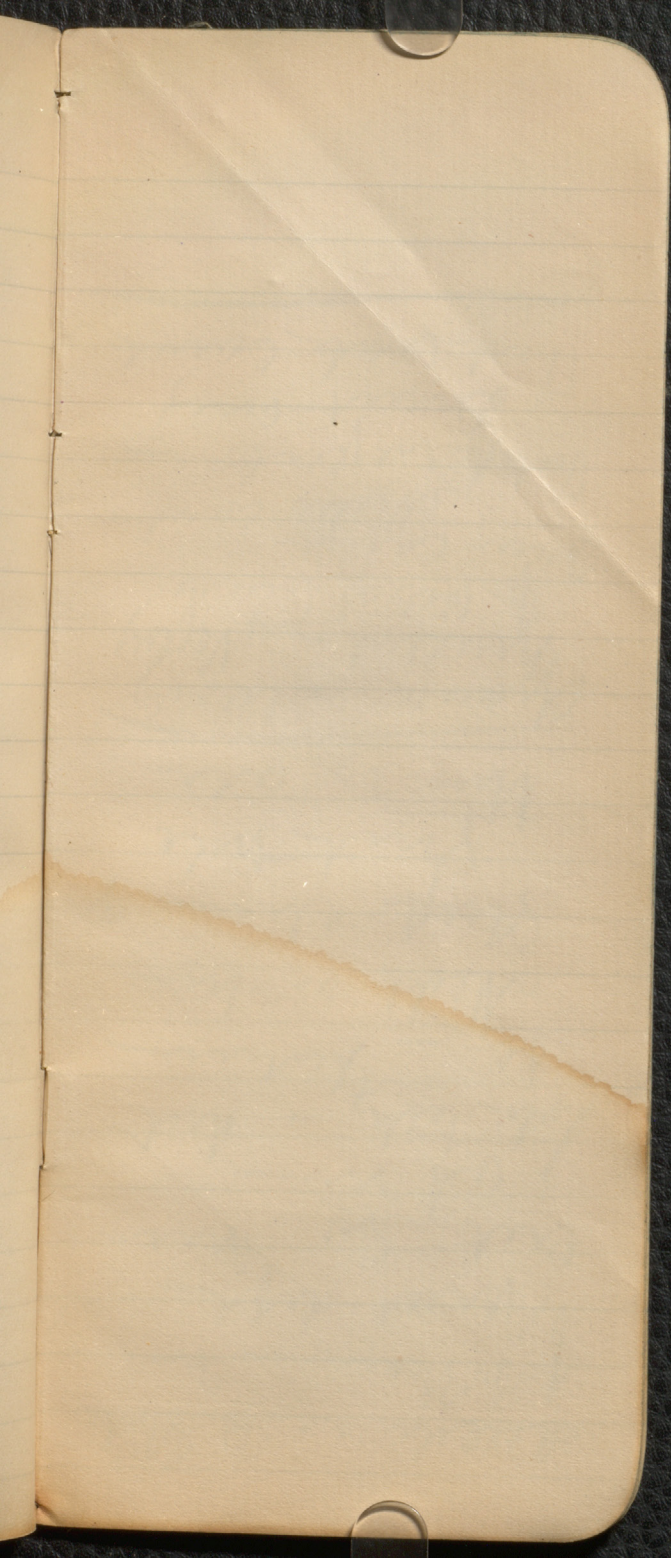


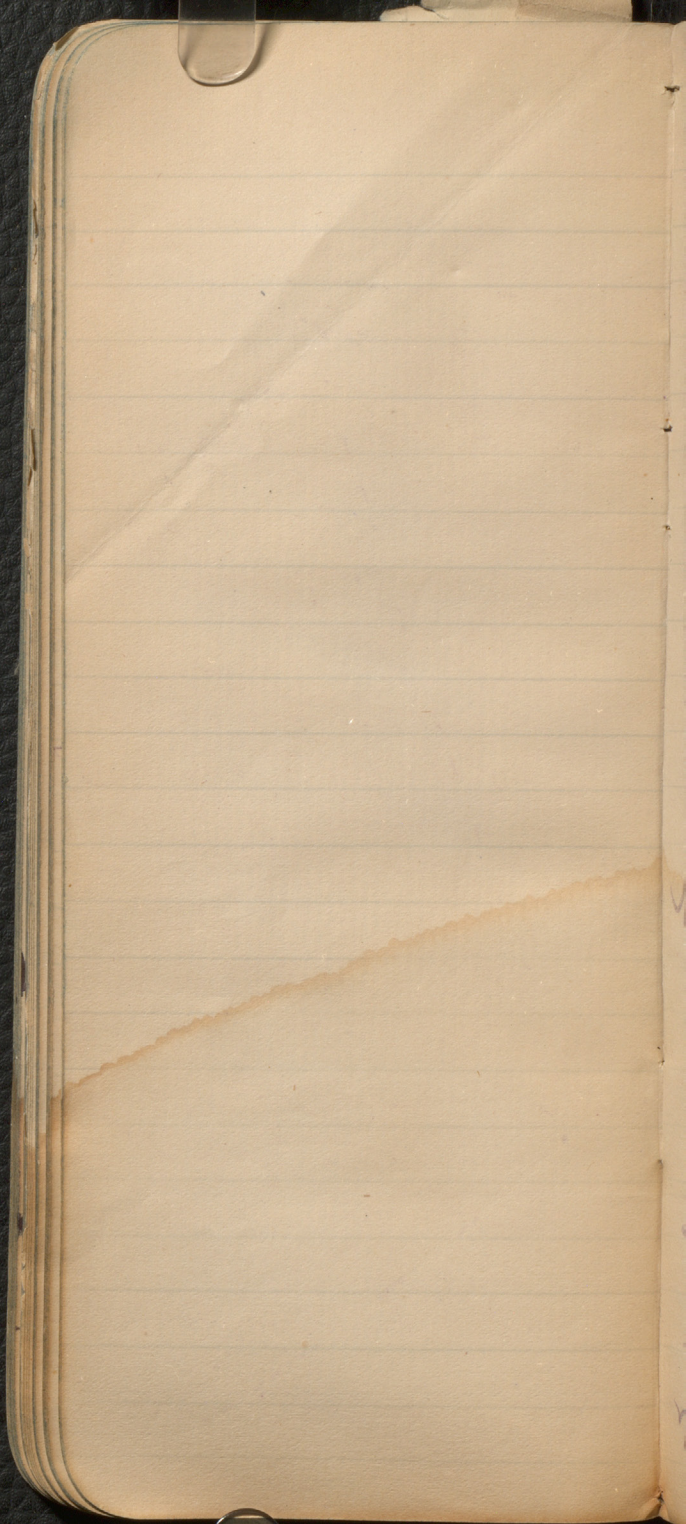






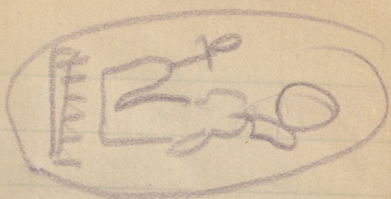






Sherrinda
Son of Amaceous
Suren

Shered
Mustapha
Bato Curme
Suren

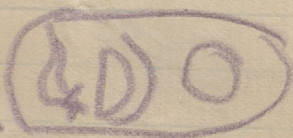


Old Shum

Paul (50)



Simple structure



Red Sea

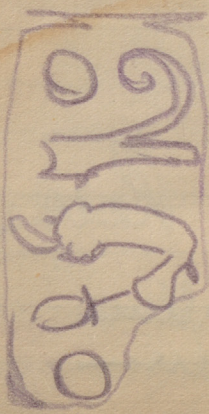
Ceratophyllum
demersum

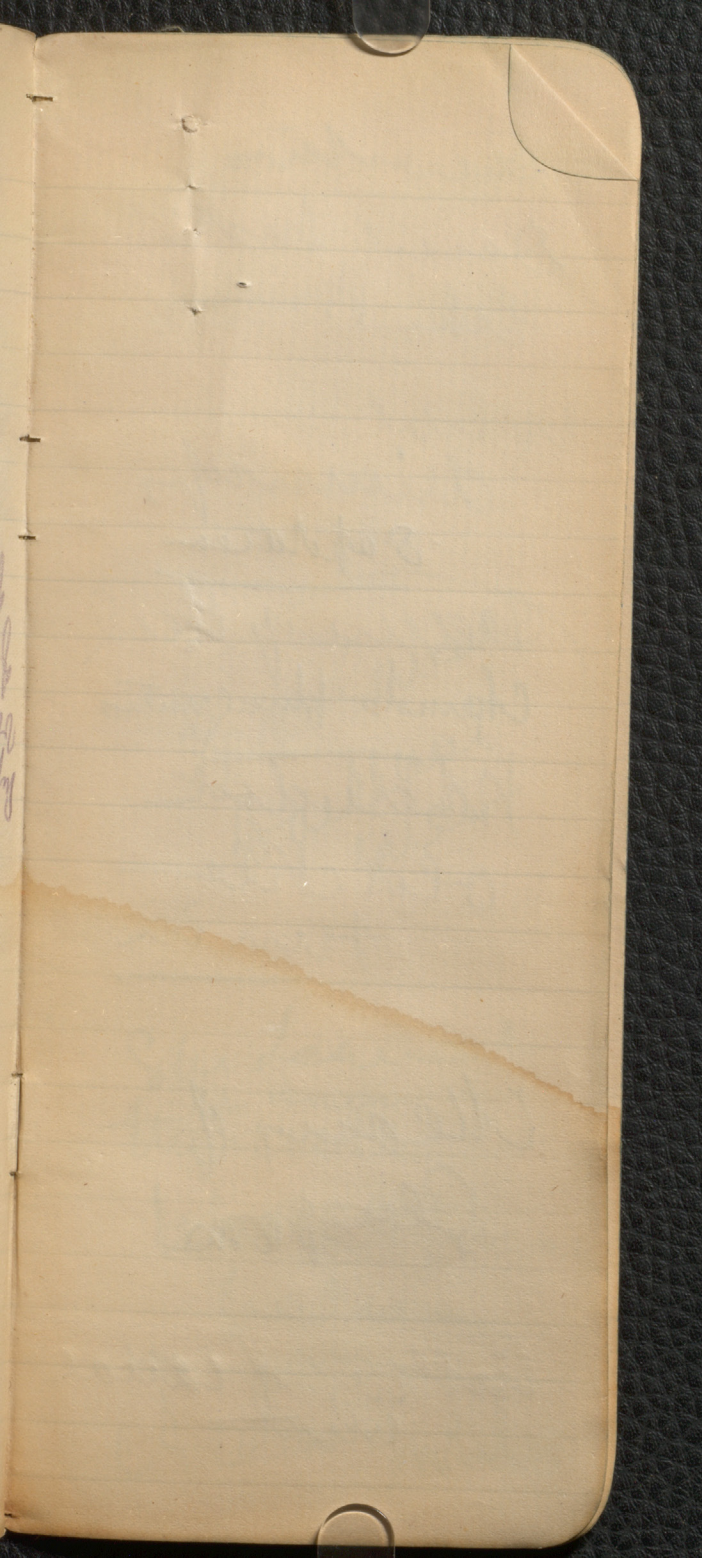


Rephind
Cattant
Cuttant
Glossary

Red

Handwritten cursive text, possibly a name or signature, written vertically.





Leontias
Several but
like Prunus

where
dimorphs
Siphonocera
Name of Reed
Canda plumbeus
where did
old chle
run in

Meaning of
Senecio

Cutting of canal
what

John Carroll
Ballant
man

John Leonard
^{John Amis}
the letter

White House
below
in my
Academy notes

