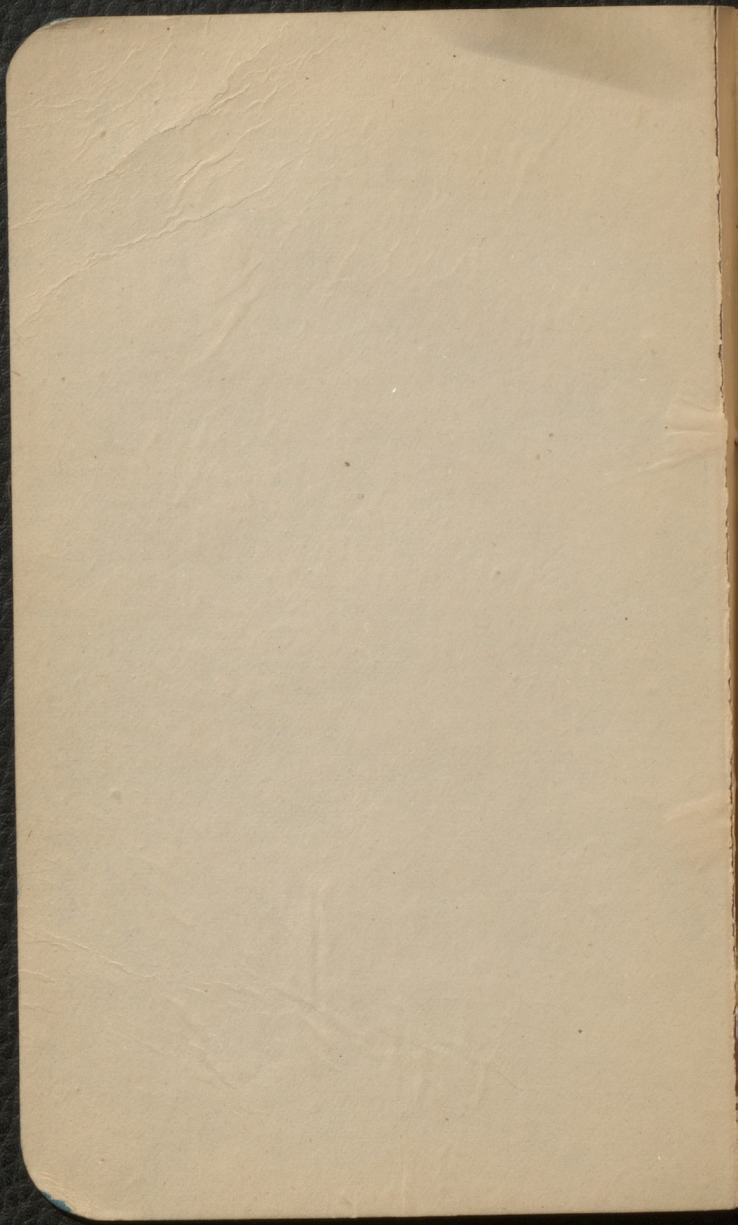
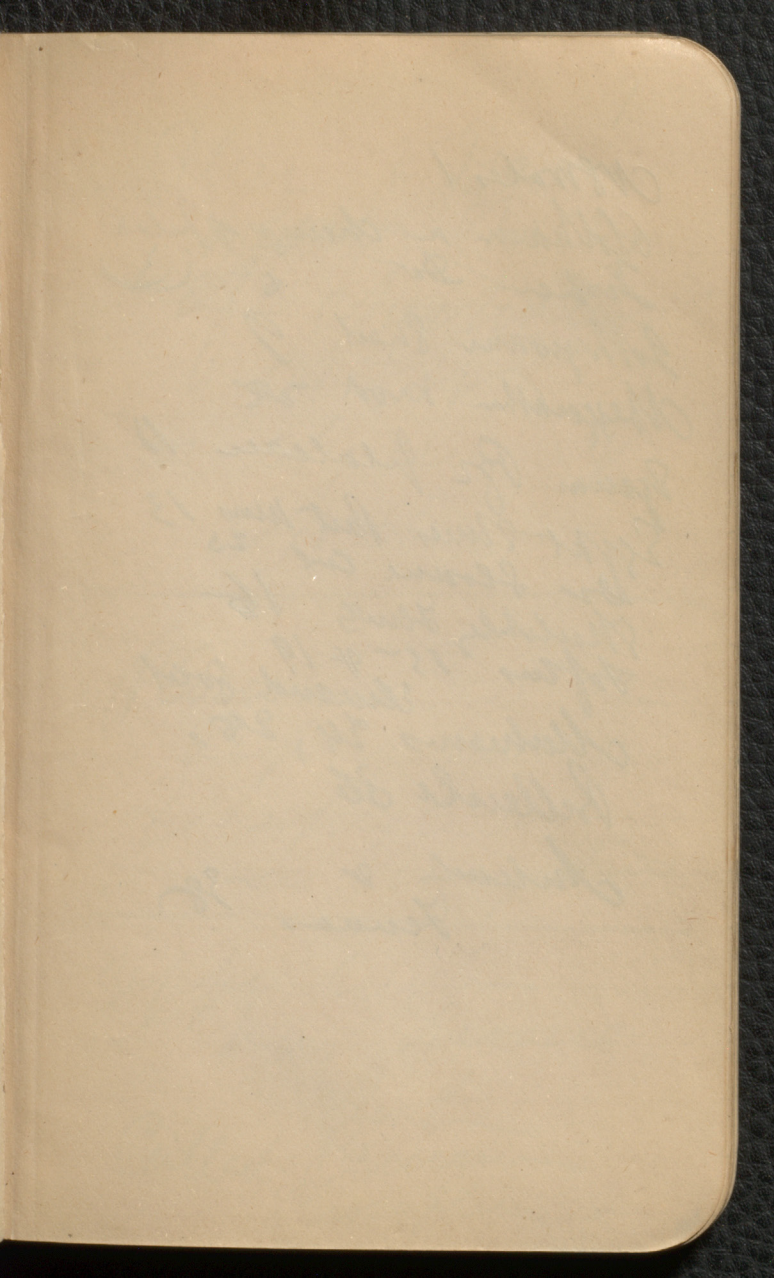
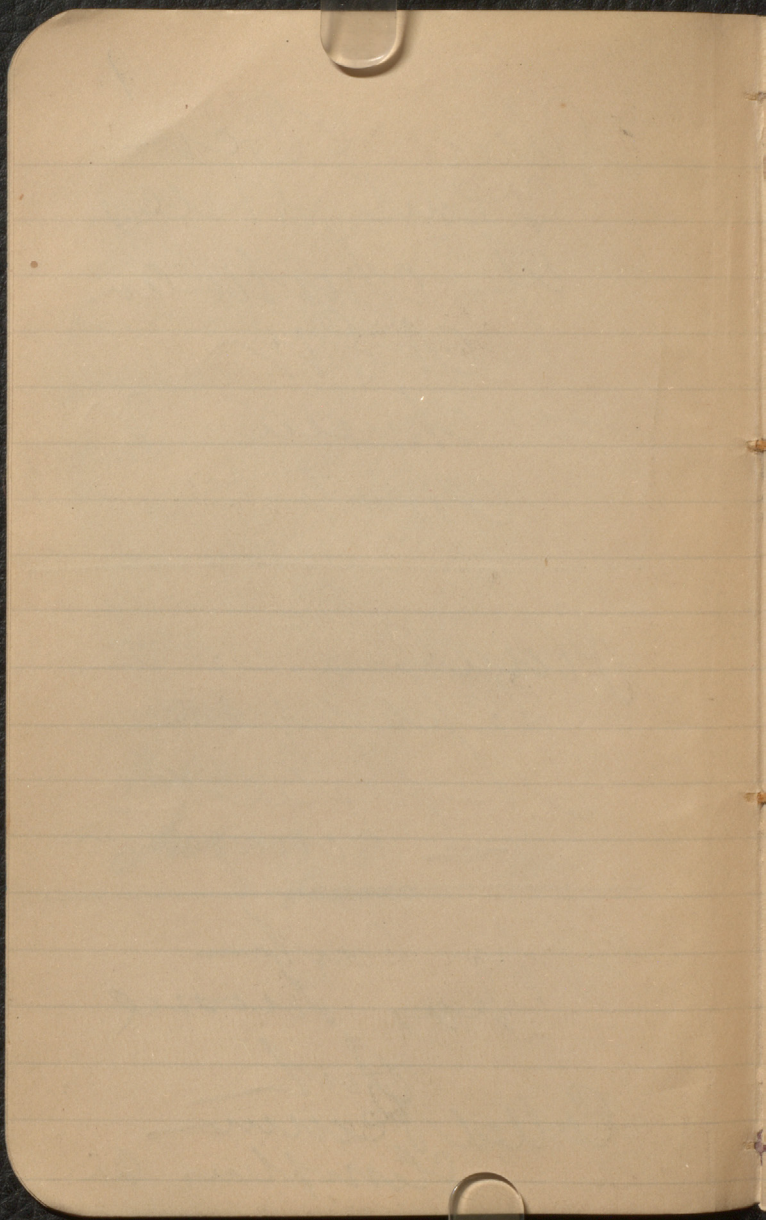


1886
Notes II.







Mease plants

See In &

See

Evene Unruh

See Mease

Upper Larone

Suppos

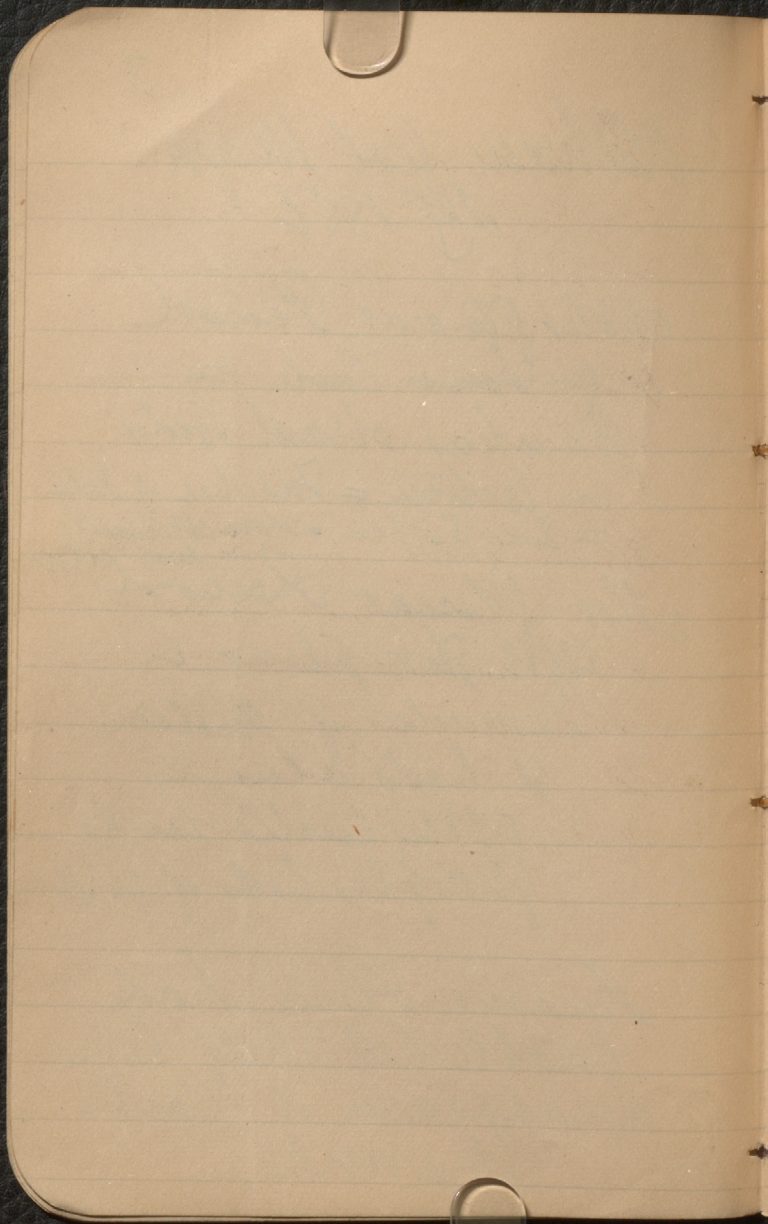
Quercus

Cinnamomum

Forate

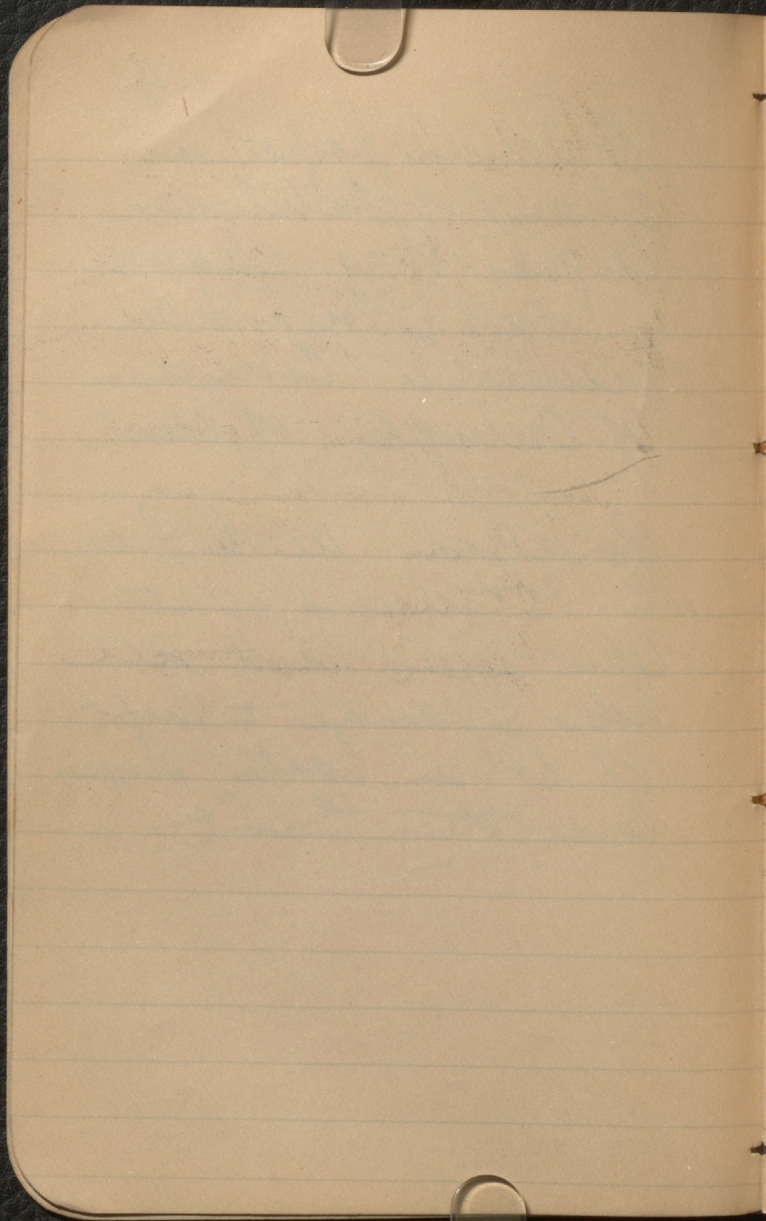
Ficus?

Called Phyllitis in Col

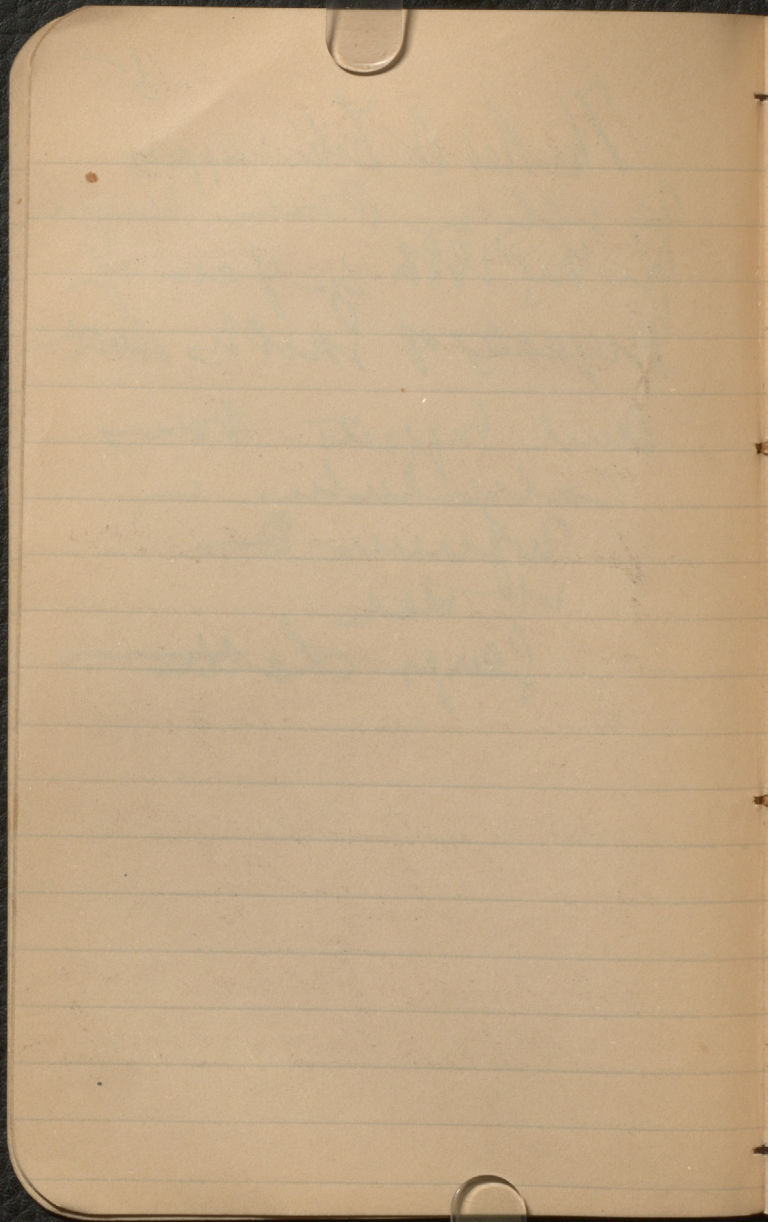


In second paper on
 Change of Latitudes
 argues that changes
 in lat & long have
 occurred in course
 of crumpling of earth.

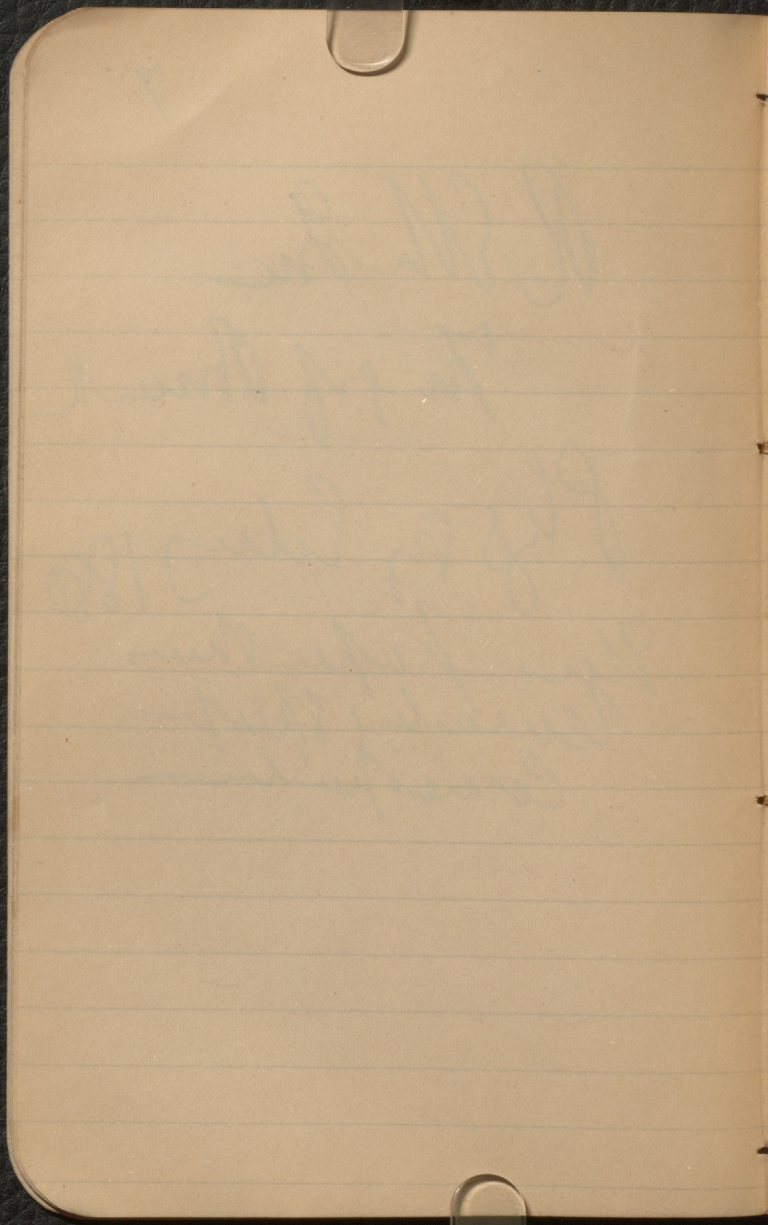
Proposed as to Peru
 5th used of Watt
 which agrees with all
 sides & passages = shift
 of 50' in each case
 since they built



The Red O. Tuba appears
 usually in the same region
 in May 1886. In fact of
 inequality of Smith's and
 and suggests very
 calculation
 reference to
 see
 Gey's Letter



Will for Physics
 to much effects of
 great currents
 in the the
 arcs of the earth
 but the hot air
 & fire as important
 changes of climate
 in the the
 current place in
 equatorial climate



A. E. Hedges Jr
& Jack

Catalogue a

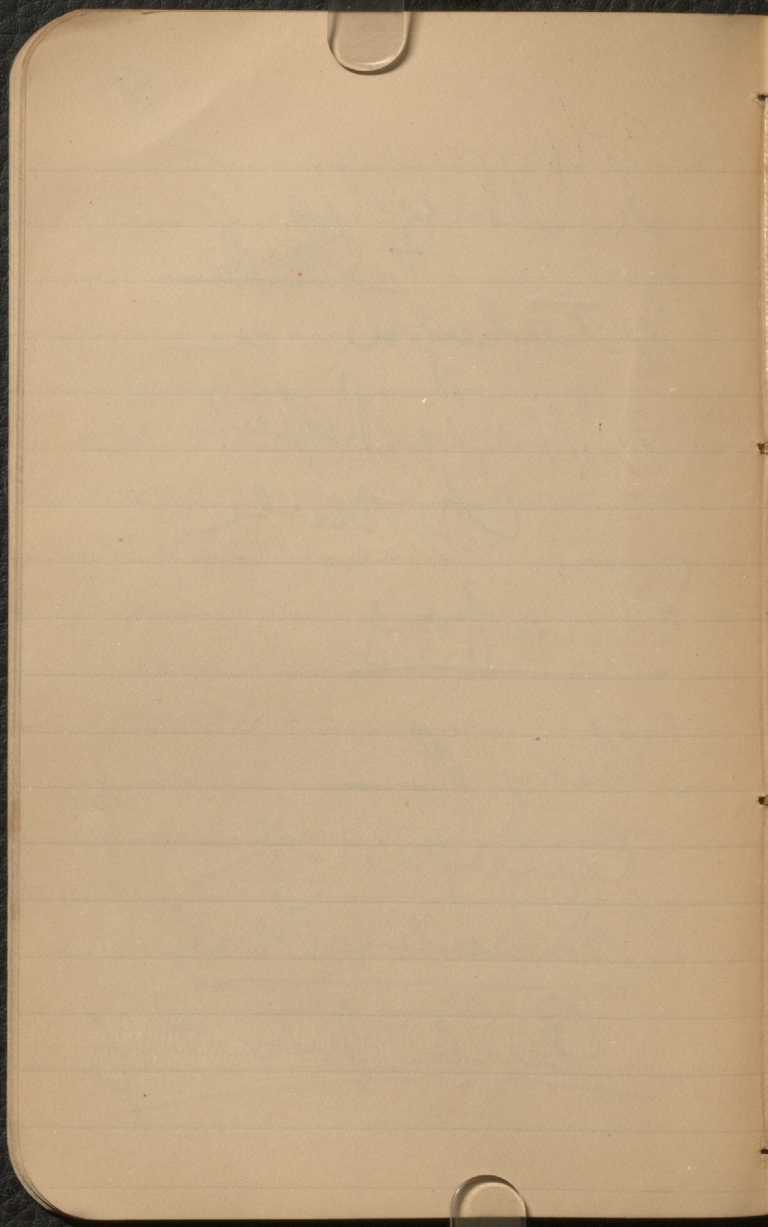
Works Reports &
Chemicals

Stamping

Ethens R.

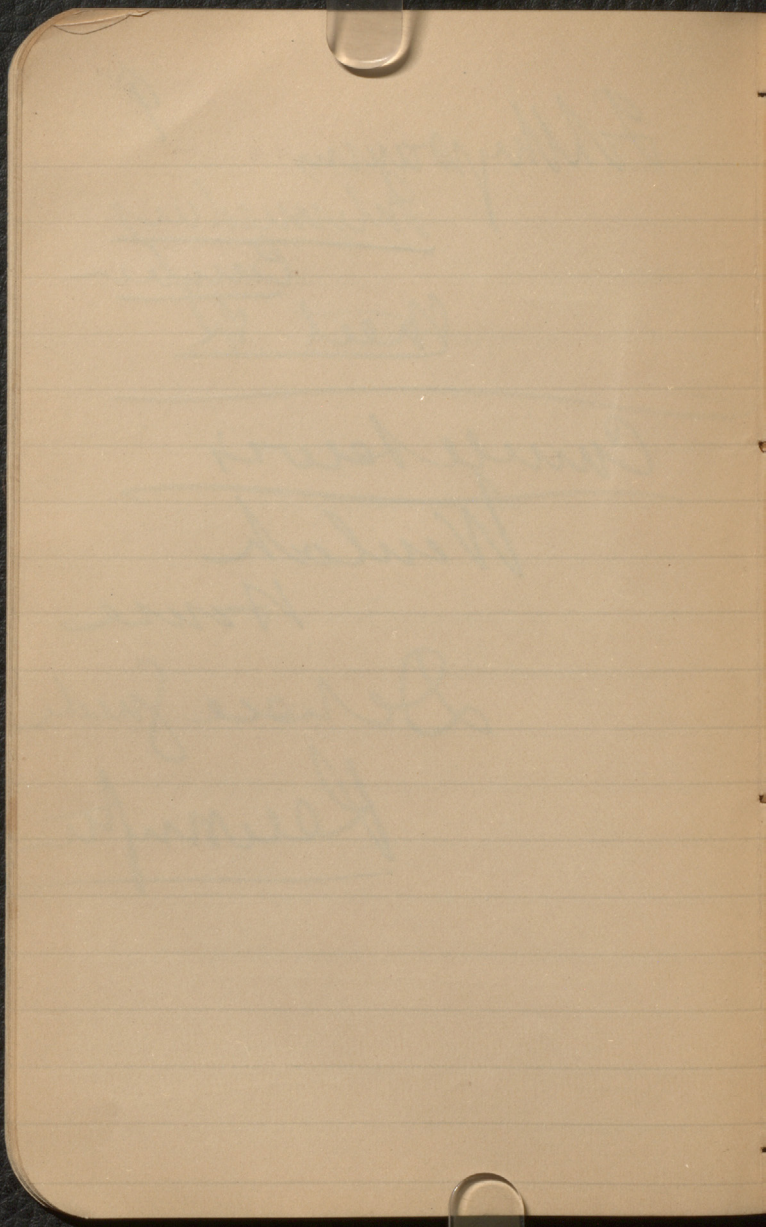
Catalogue of
Chemical Family

Chemical Ref



Allypays 9
Intermedus
Curly
Meal &

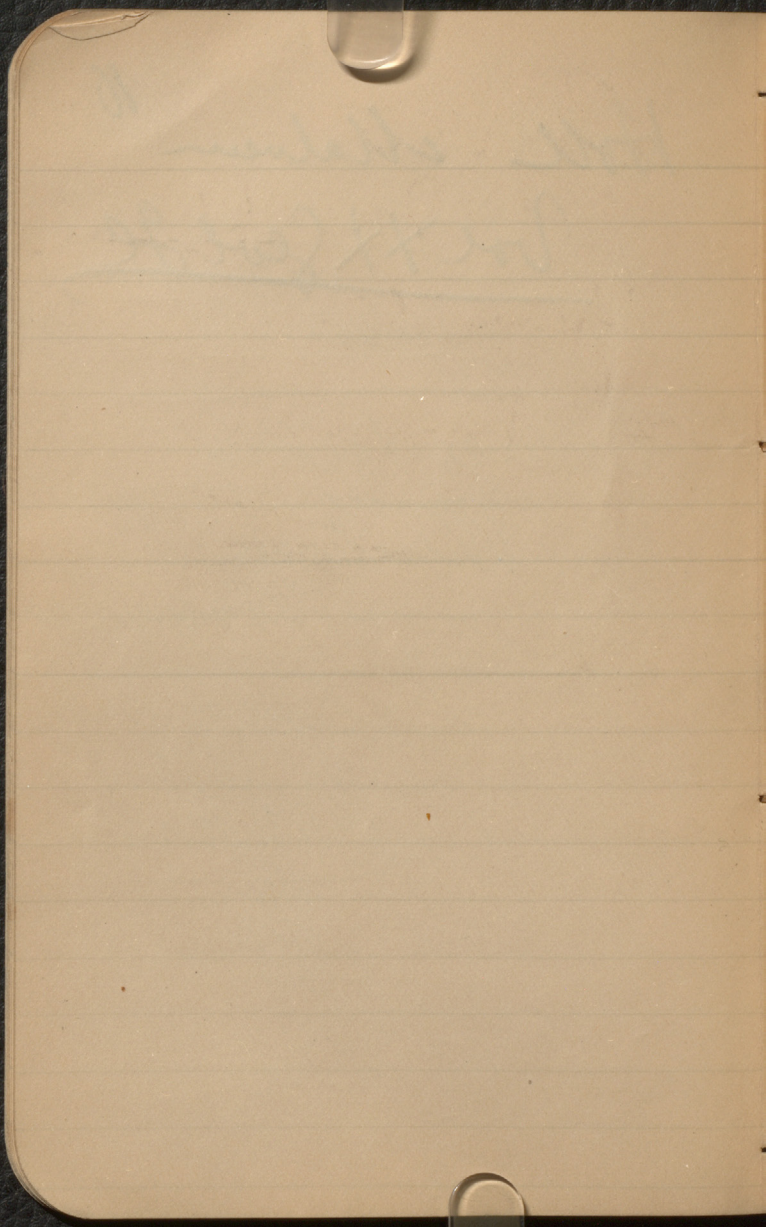
Cumbe Lewis
Wenlock
House
De Rose Guide
Reunite



Holl Malvern

16

Vol XX Geol GE



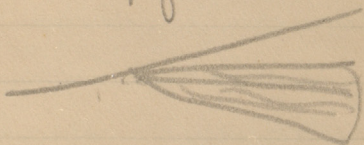
Caryota

11

Furcifer

Sumatra

= Naefguths



At
Carya Guara
Prof. Pul, Zurich
has worked at Herbarium
of Geneva & collected
and found many
Atlantic species
at Schenck

+ Fine gravel lamellar
Dimple or chert - group
by mass & fine texture
with gray felspar?
Chertite, ^{Stable Lenses} ~~at~~ Mass
Dark

+ Dark gray granule Wullum
Course green gray & dull
red felspar & a very
few scales of Mass
Group to see Mass
Mass

○ Course red green
Granite large clasts
Cylindrical red felspar
little Wullum &
by little Mass

+

Putty & beads }
Dunks }
a type 13
mullins
grey

Figure of Nectanebe

a few grams
metallic
Mica or graphite

Black granite from
as from Puch
358 BL

Black Pithon

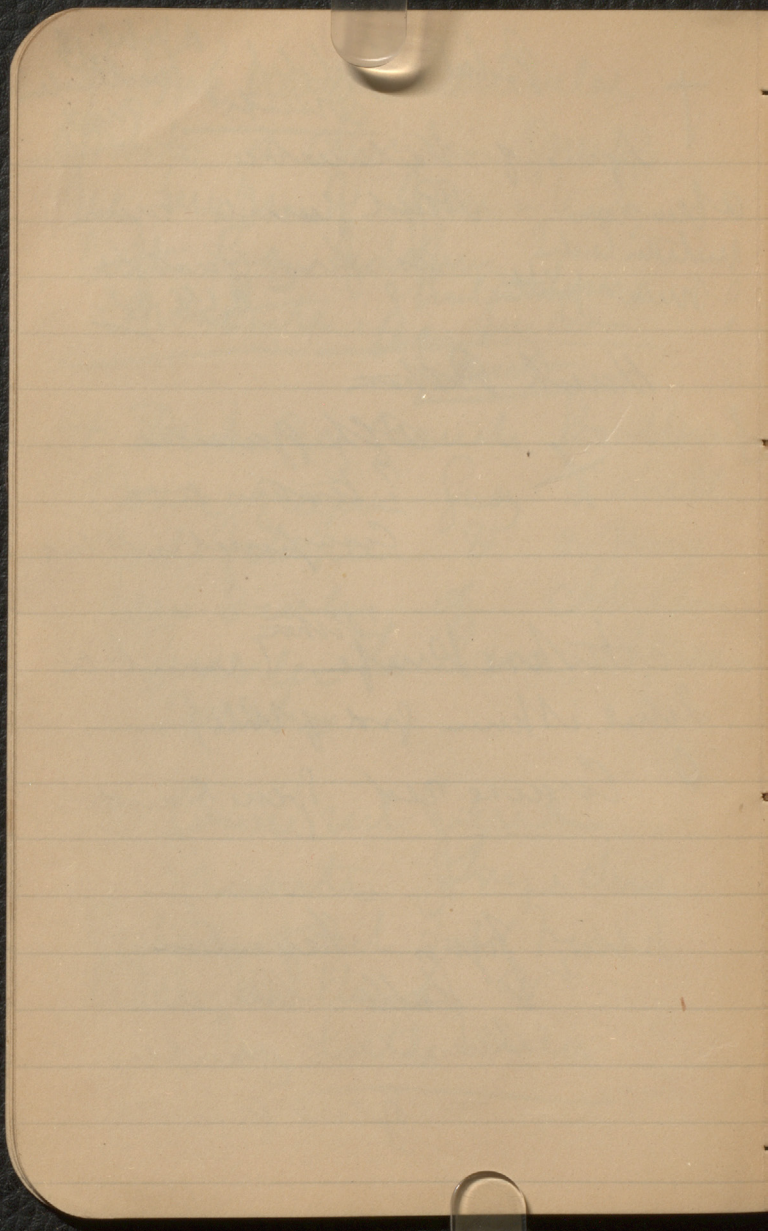
+

Blk granite
? broken
Compacted with lead

Atchore Knife ^{Pithon} (went to
Lahel & Thum (end of Nile) —

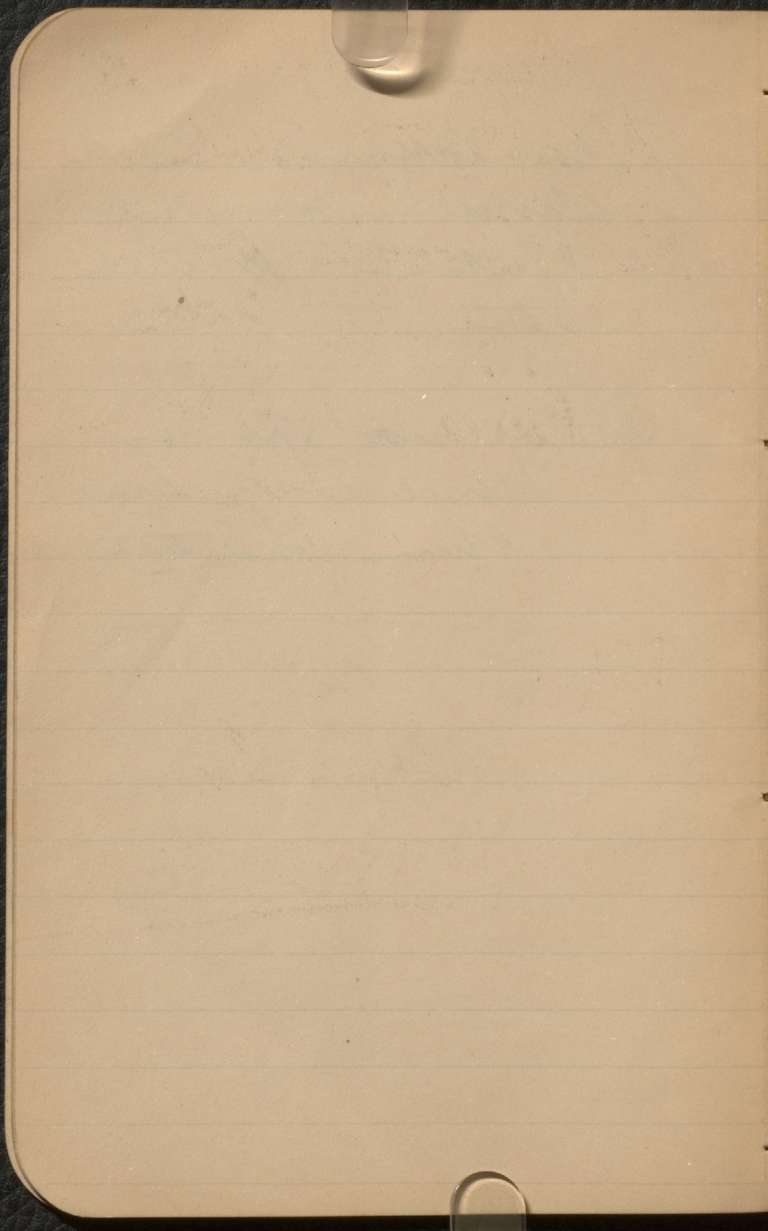
o Coarse red Speck granite.

Silly pyro granules
& ~~balls~~ large
Mount with capsules
= Speck granite.



Two specimens These
 should cut white
 spots — Well-known
 Stone

Stone cut of stone —
 Unlikely of local
 stone granite



Sarcophagus

15

Nankata, Ind

Red granite dark

grey points with

large red felspar
Ophites

Thames 3rd

Alps Munich
in Red granite

Alfred
Clarence Cell
Birmingham

Allen Bonney
James

July 89

16

Sketches ⁷⁸⁵ News for the

Manufacture of gun-flints

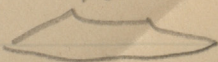
Stamp 17/6

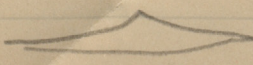
Case in last number

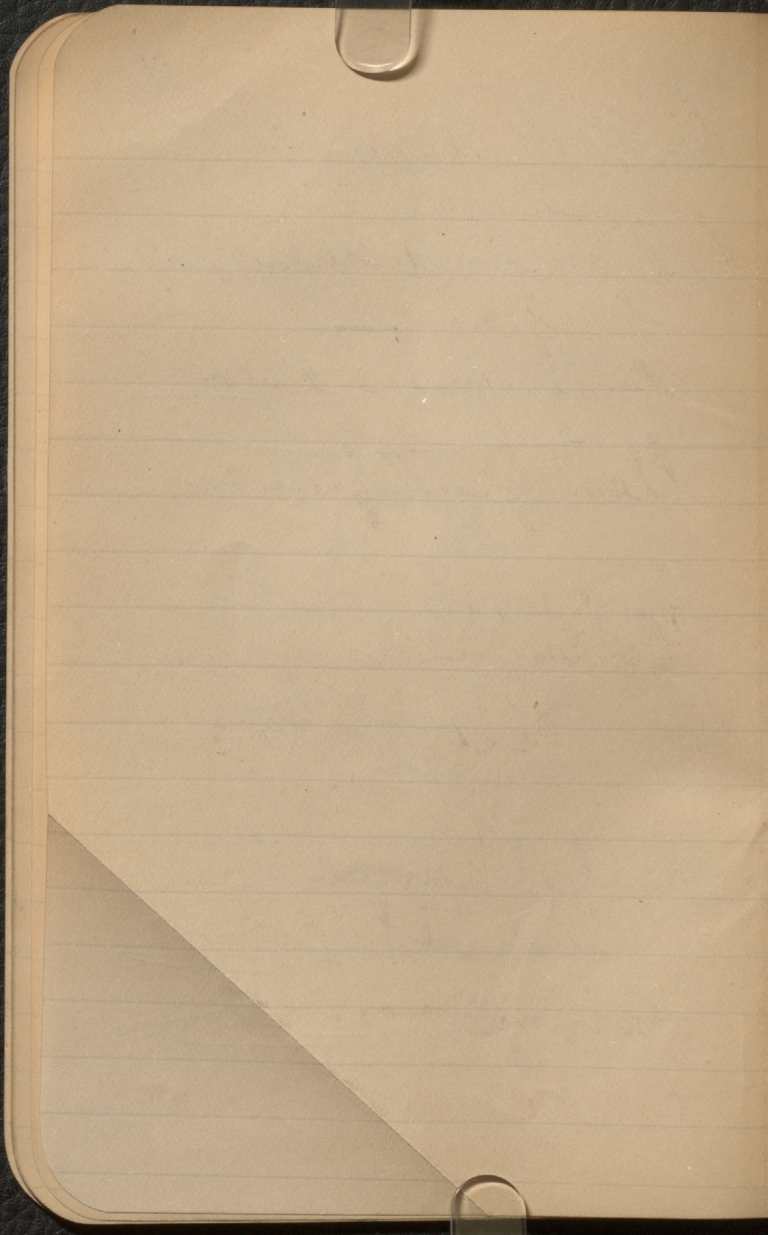
July 86
Phys. white pencils

for any flint to
check

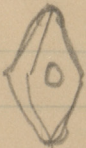
July flutes, sheet of paper

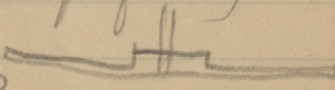
Small bodies 

usage 

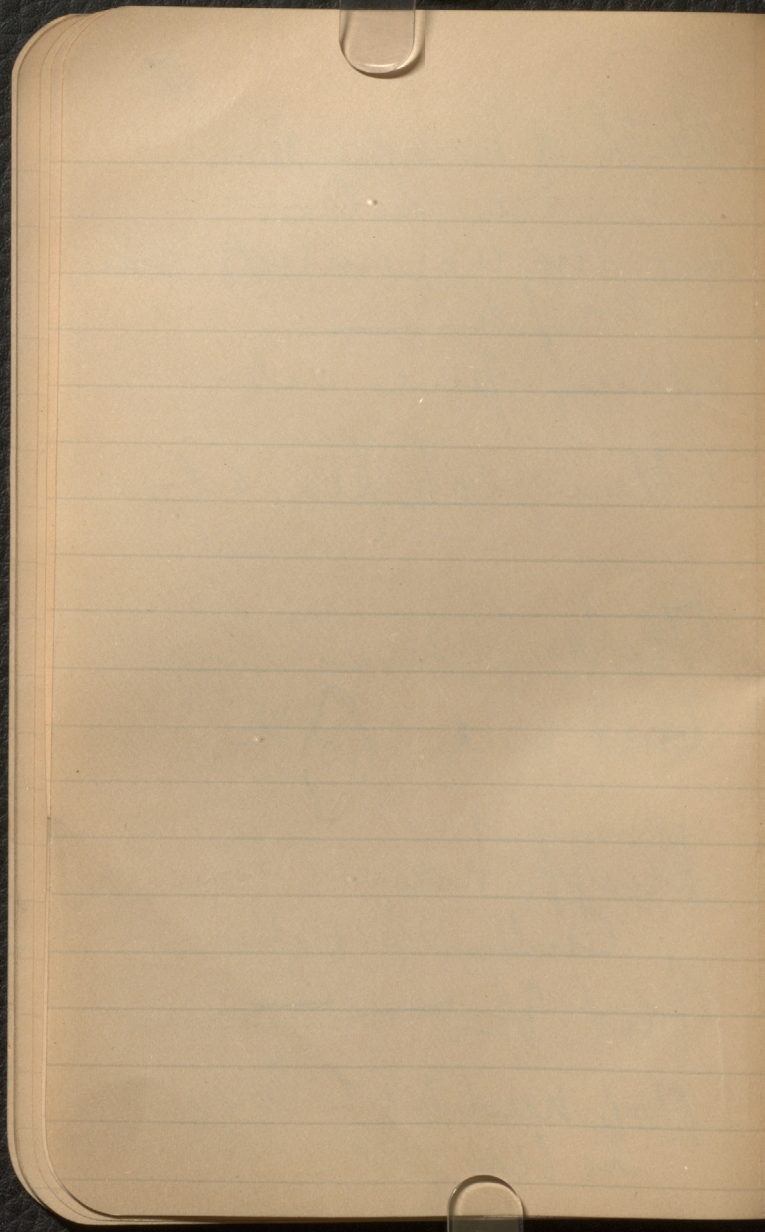


Ball of peen on my
 be accidental
 but not to be unless you
 keep —
 May pins are
 Mecklenburg pins are

Flaking hammer by
 Lind and  this

Krafft hammer for
 cutting up plates
 Flat this 

Not need to be large
 as blow gun



18

cut flabby hammer head

See Blaupunkt
Plan of
Rock

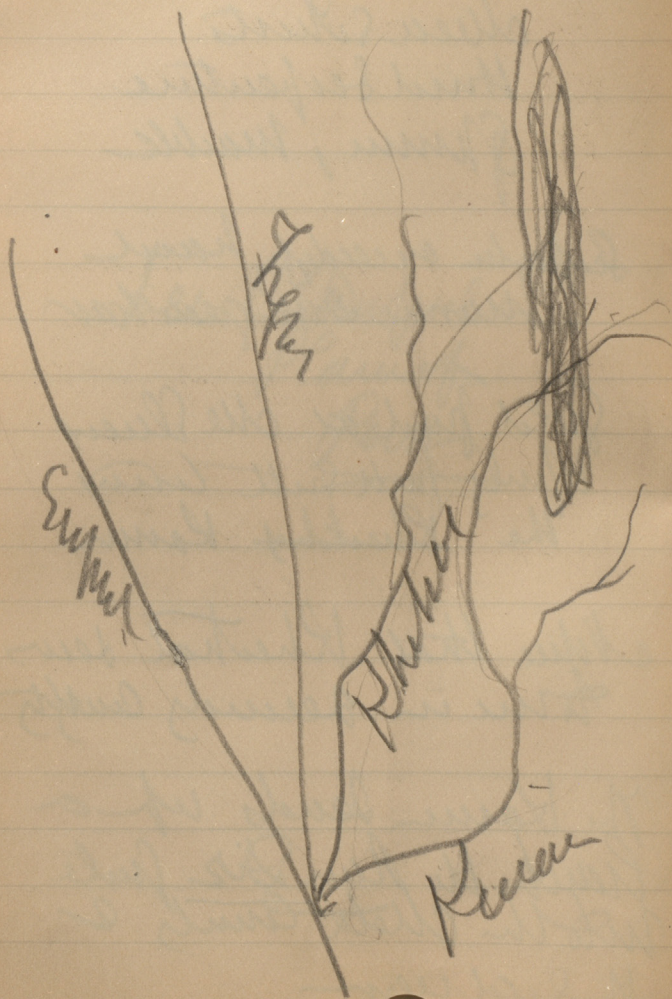
Hard clay slates
 blue slates
 Hard serpentine
 Gneiss, Marble

Serpentine exceeds hard
 Marble and gneiss

Sold part of the Sluice
 of July part with
 the ~~Rheathal~~ Kamm

Notice that Rheathal seems
 to be in secondary country

The Kamm leads up a
 trench the New Dix fault
 into the Cheta County &
 the red region



They ride E to W

Kuray = Pison

Rhekkhal = Sahn

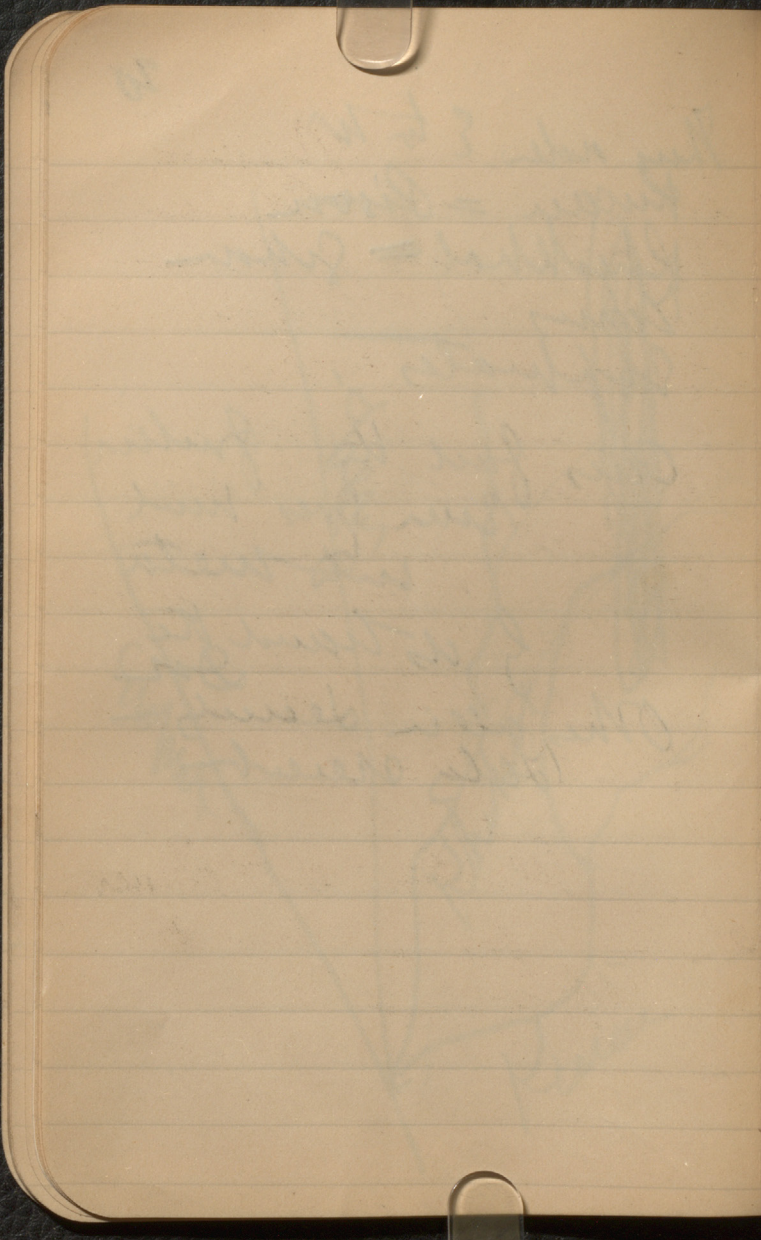
Sigmas

Sulfates,

Can find the further
 run from west
 into water

of its hand the
 In

Other all in security -
 July recent

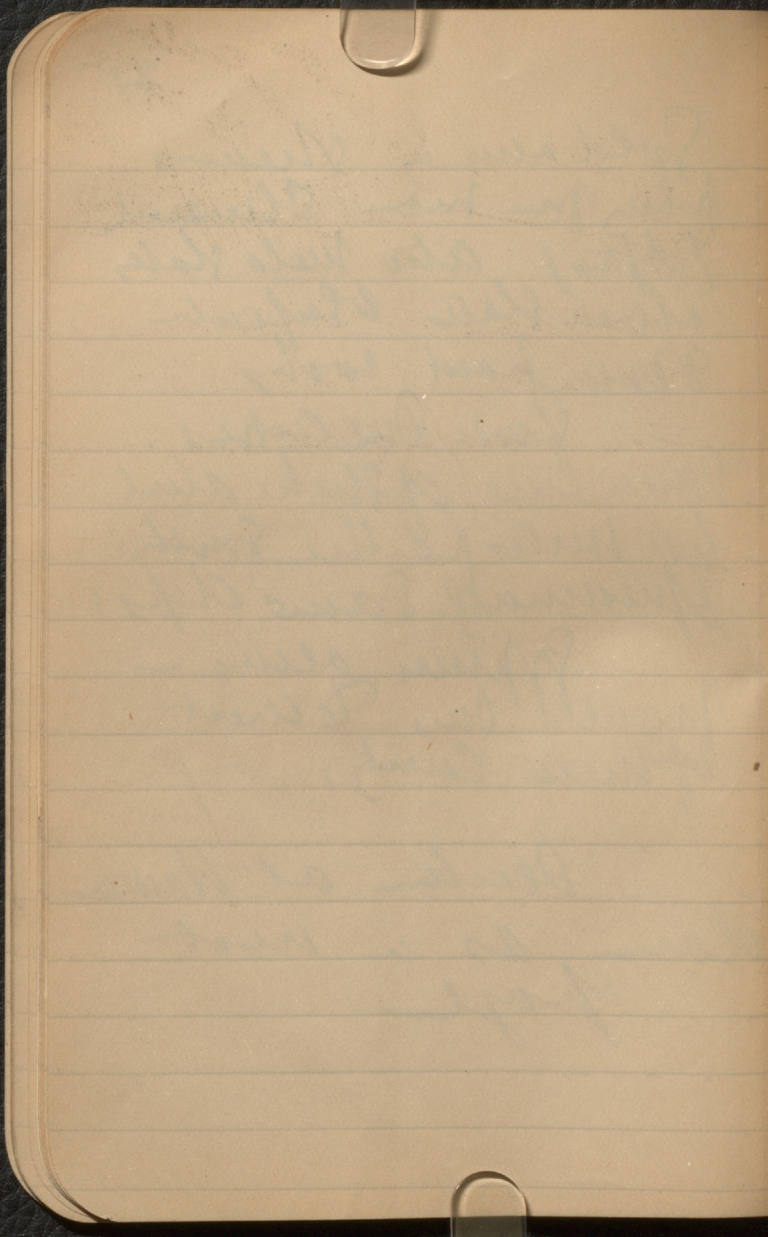


Sold also in News
 plus from the Cleveland
 (Ohio) also meta slates,
 chert slates & shales
 & various hard rocks

Over 200 acres
 some time of the day and
 60 miles farther south
 & generally same dips!

Some also in
 would like to visit
 of meta country,

Deaths at Haver
 done as a next
 page



Mussey

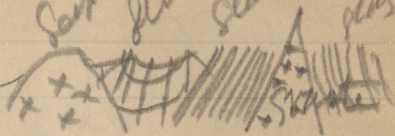
Serpentine

Quartzite

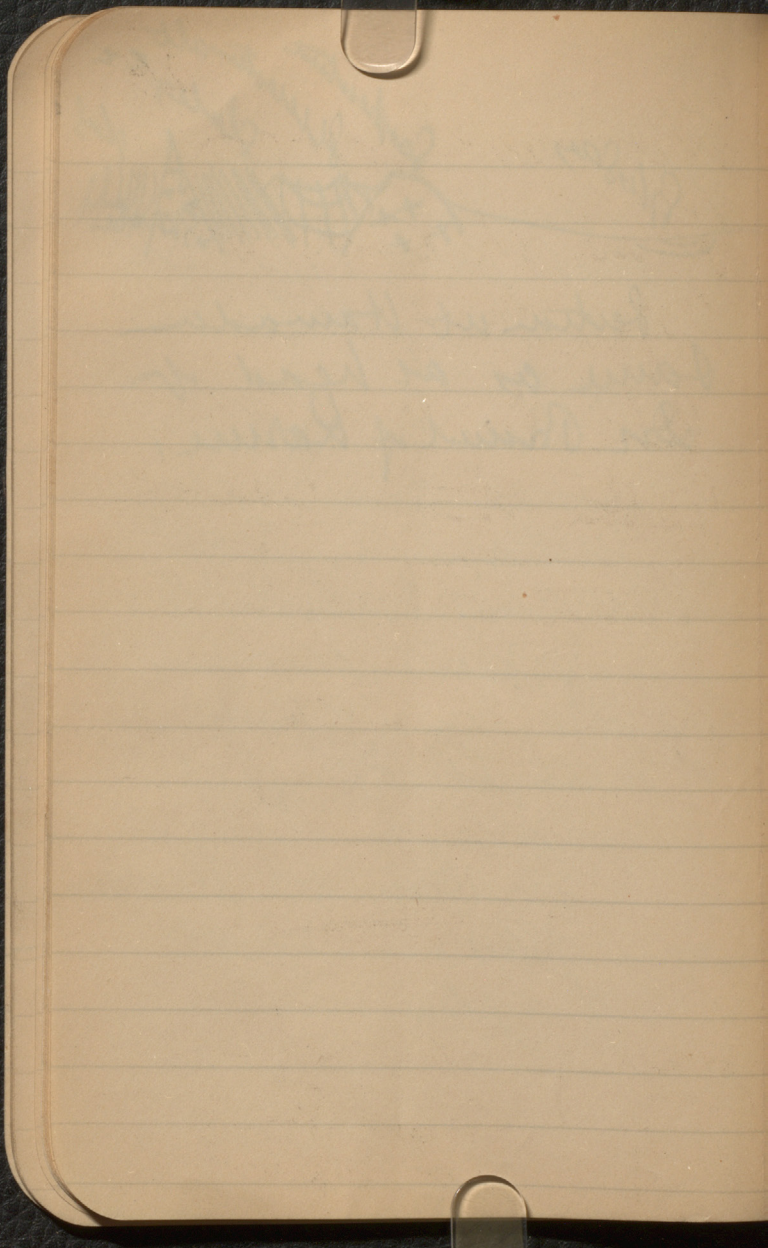
slates

cc

plg



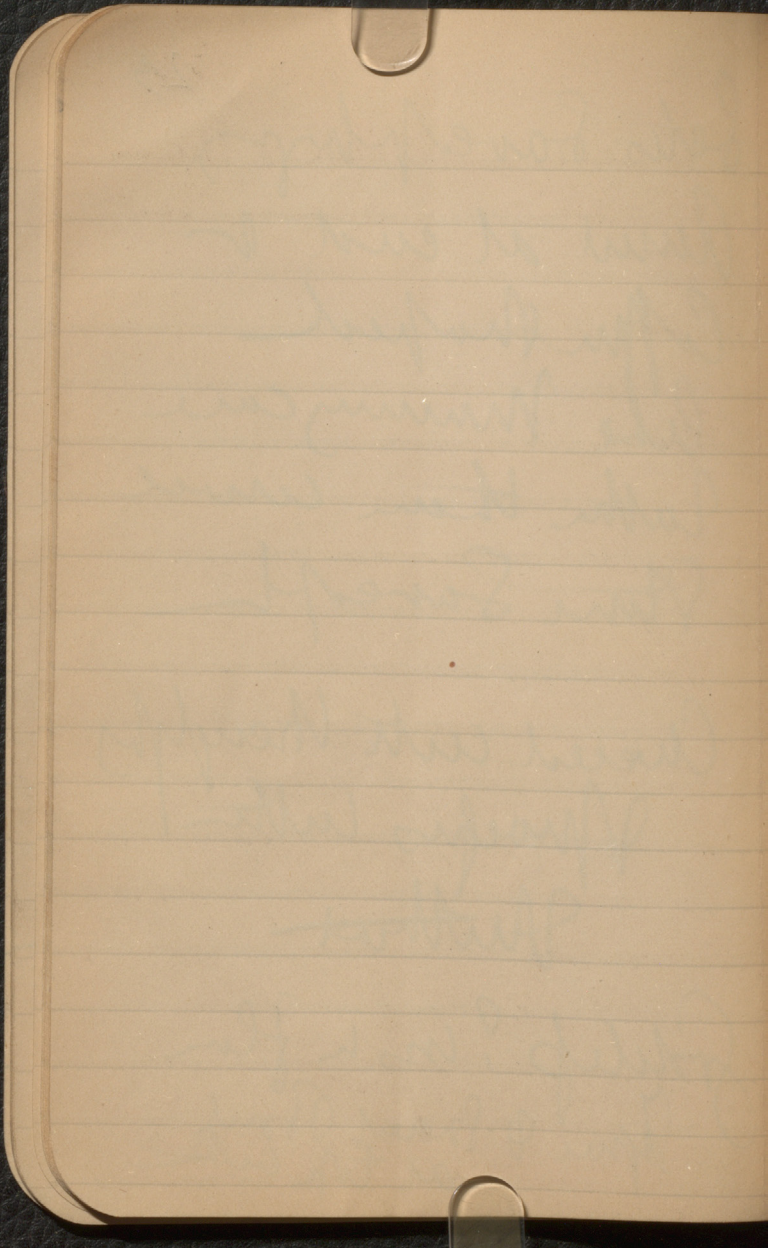
Section at Hamada
Same as at head of
In Branch of Karun,



Let's save physics
 Round at end of
 Cup shaped
 like Mummy case
 better than usual
 Stone Sarcoph

Checked with the physics
 Professor letter
~~without~~

Grading? ins to floor
 Space & Sacred Bond
 at top with



St. Malvern to Lynch & then
to the old Peasam Post

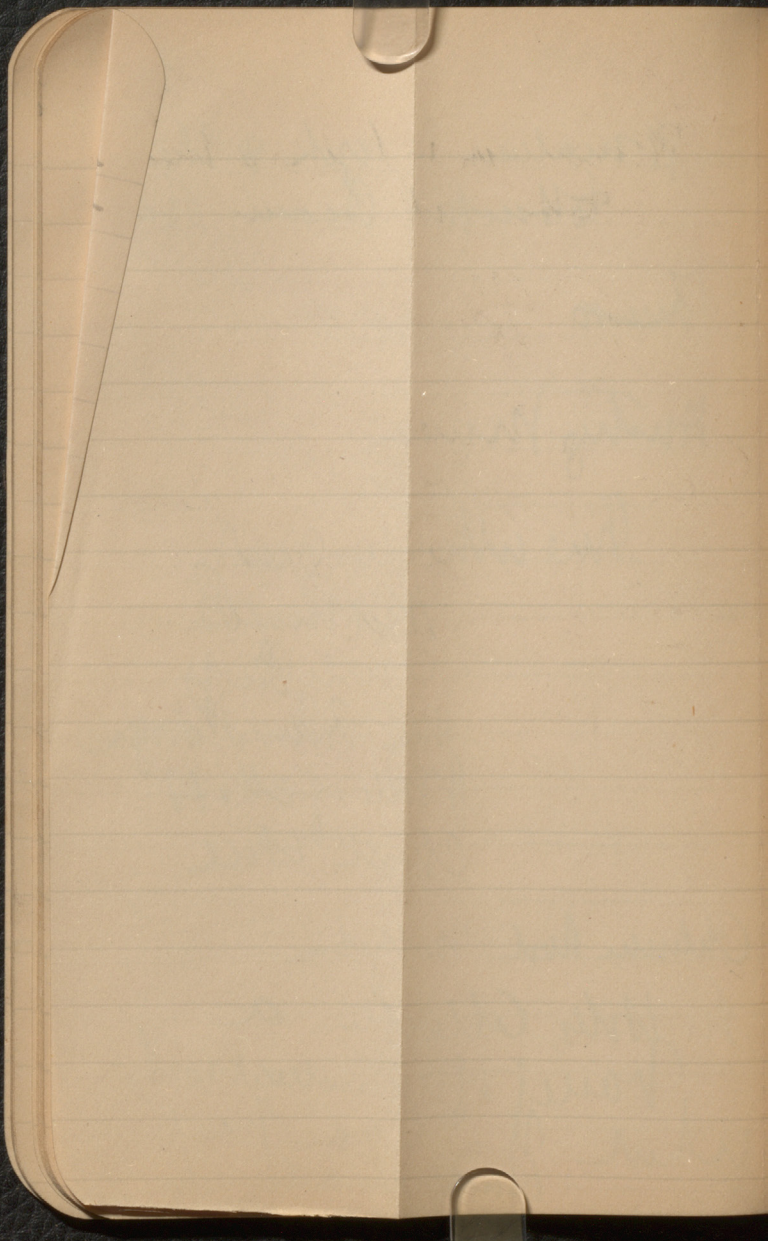
~~From~~

Anty Muen

One at the end of
M. M. M. M.
C. M. M. M.
M. M. M. M.
M. M. M. M.
M. M. M. M.
M. M. M. M.

Chlorine and the light

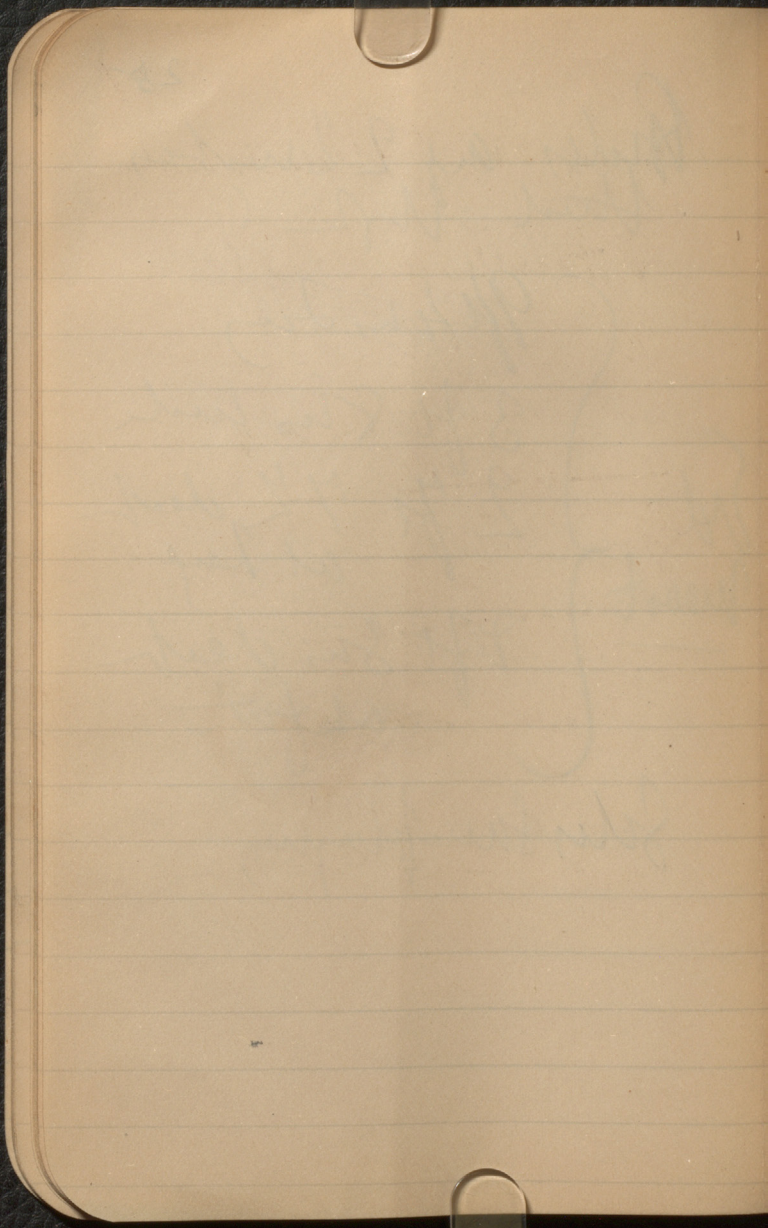
In the hills collected a
variety of mineral rocks
which may be a part
of the same class



Boles are 22 inches
thick $1\frac{1}{2}$?

{
 9 ft 4 in long
 3 ft 8 in wide
 2 ft 7 in deep
 at base
 2 ft 3 in deep
 at foot
 }
 Not
 meant

Boles same as before



26

Many other measurements

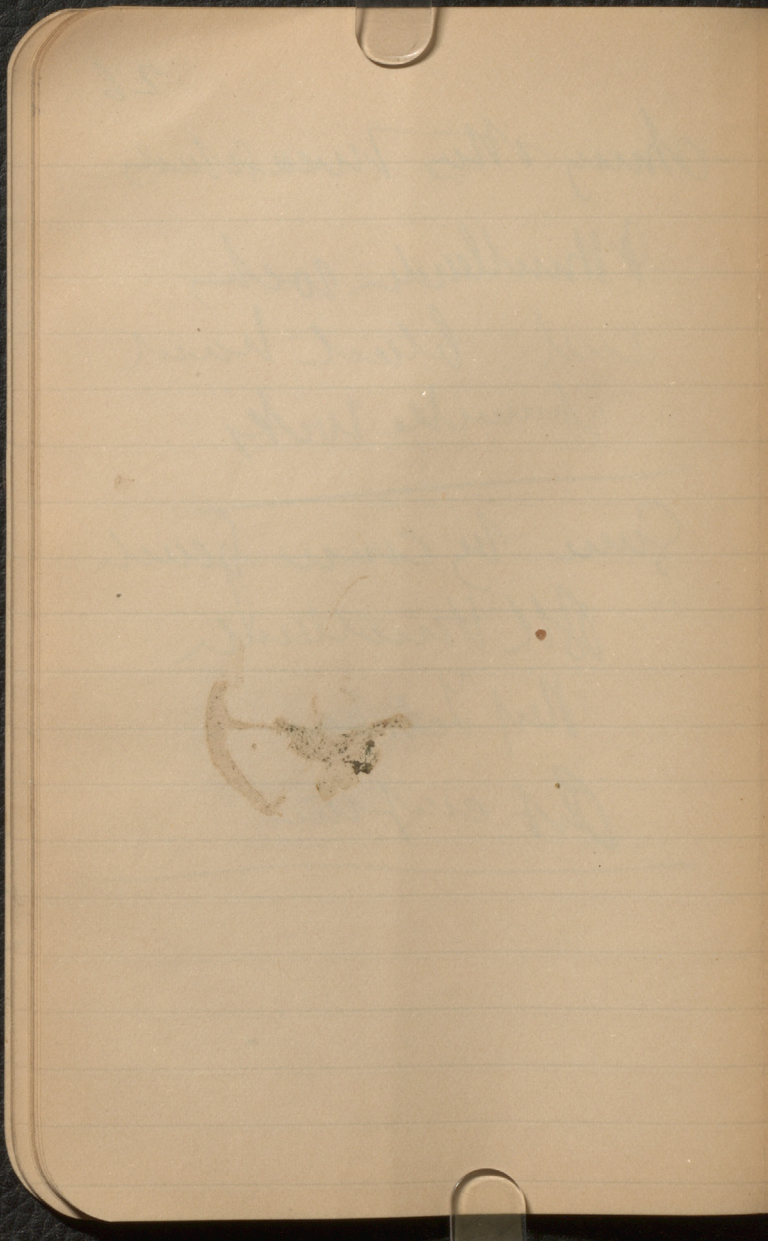
of Hurdlehead rocks,
and black sand
shrinkage rocks

Some by course of

Hurdlehead

Red Ledge

Out eruption



27



Arll Seal Flord XX

825 city 20
Mukluen city 28

State St Mukluen
200 ft above
Den at Mukluen

Total thickness 1400 ft

Wood bluffs
at base of hills
above Mukluen
green
with bands of

Mr. S. S. S. S.

Dep. Smith

East of York

W. Malin

Meer Schicht
& Soil Layers

Rock

View of veins

spread away
granite

~~Deputy~~

McMahan

General

Sup 500 -

CME & Co

The work

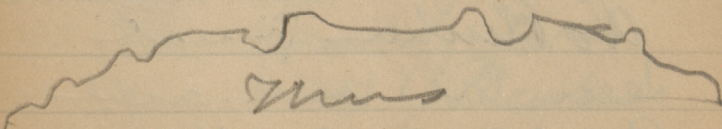
has been

held out

since

Tramped with Mr
Banks towards glacier

Afternoon June 21st
South end of Walker
& saw Westport Ben
with benches of
Bostons - Remarhalls
and several lines
of earth and debris
Among the top, and
by my ditch including
altitude of about an
acre — 1800 feet
above sea



Mass

At 'Cutups & Gray
Siding' of the mountain
& at Great Dunes
Long Sands proper
Great Dunes - dips to
SW and also to the
& Clinton? beds with
very of filopar and
some quartzite. Top
of beam measures
Great Mountain
Dunes. This the
dark & peculiar cream
& hill

No Plaster found
seen but with a few
shells and the
rock irregularly shaped

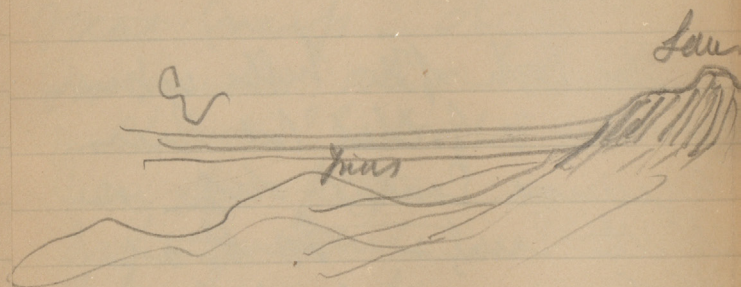
to great depth. Order as
 follows. I have seen 3 of them
 Mass & at Long Point
 Ontario

For ~~the~~ ~~the~~ ~~the~~ ~~the~~ ~~the~~
 Law

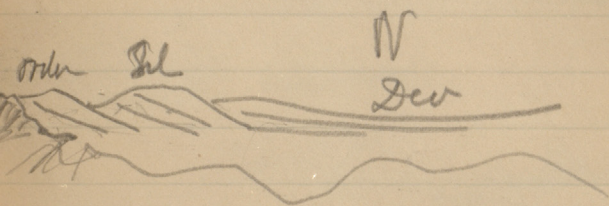
The work of the hills is more
 faulted & folded but has
 a general easting dip in
 North land - To that
 the hills at West must
 not necessarily be back
 of them.

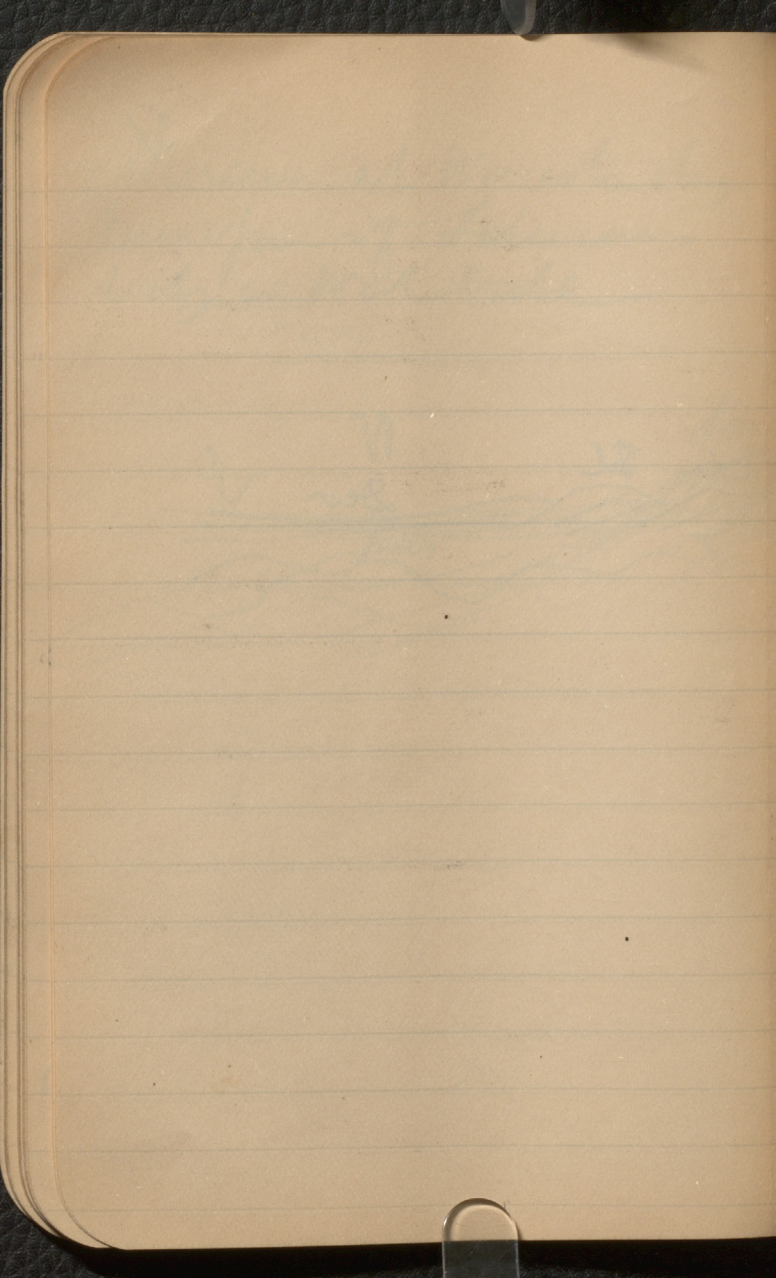
The ridge must have
 been greatly denuded
 in past times but has
 not been ground up
 in West dated by Pleistocene
 denudation. A part of
 water in Pleistocene

Museum at Worcester they
keep of Salween
only on West side



31





Williamson

Identity of Trails
 applied to Features

Hull # —

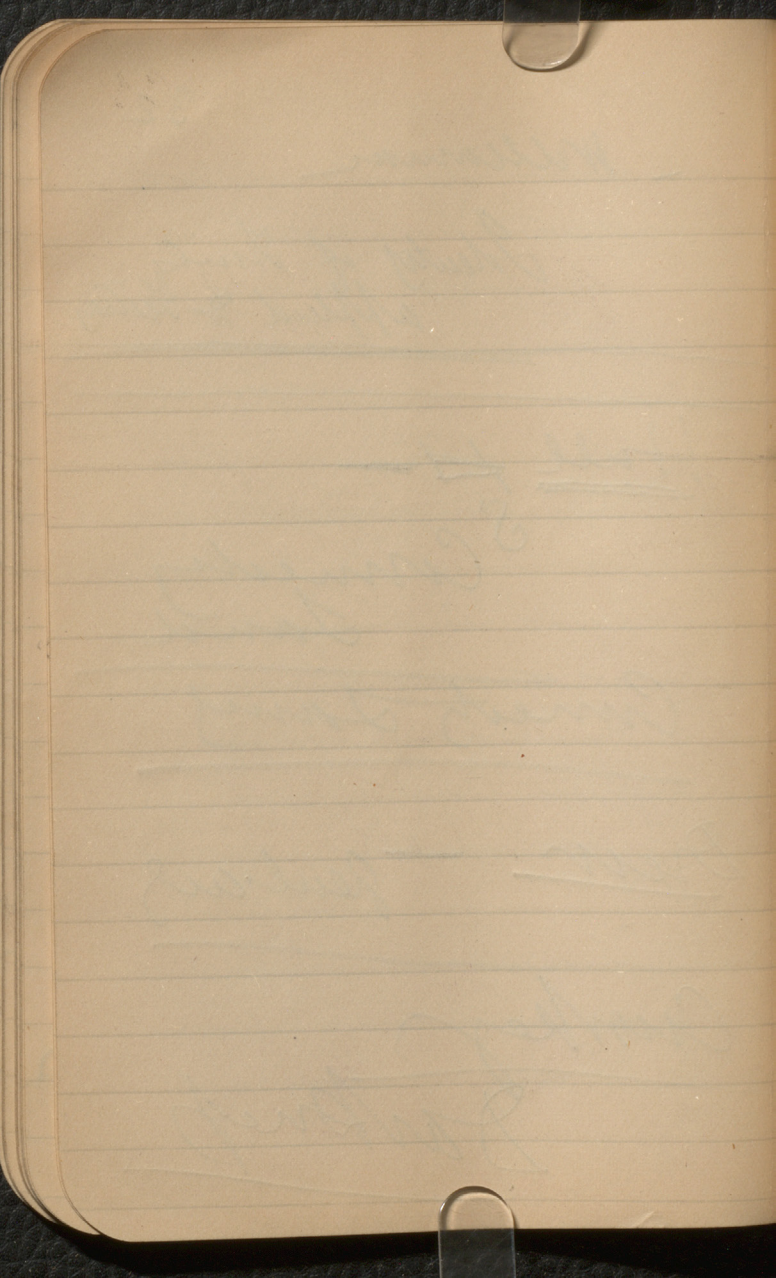
5' Connely
 Sand

Connely Sand

Drew — general

Cumkey

Darkness



? as to Gay charges

Depend on climate

Hate

Hate

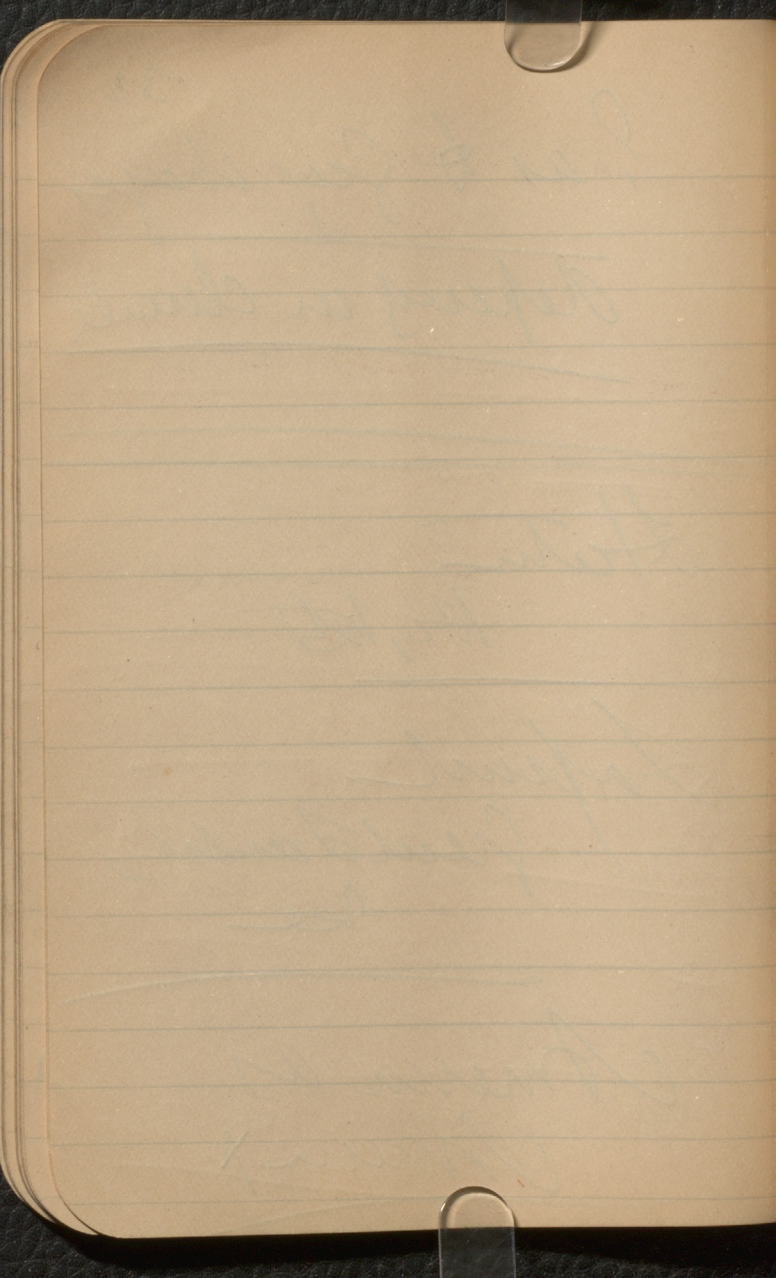
Spirit

Great Family

be

America as

America X

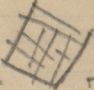


Aspen of Mentus

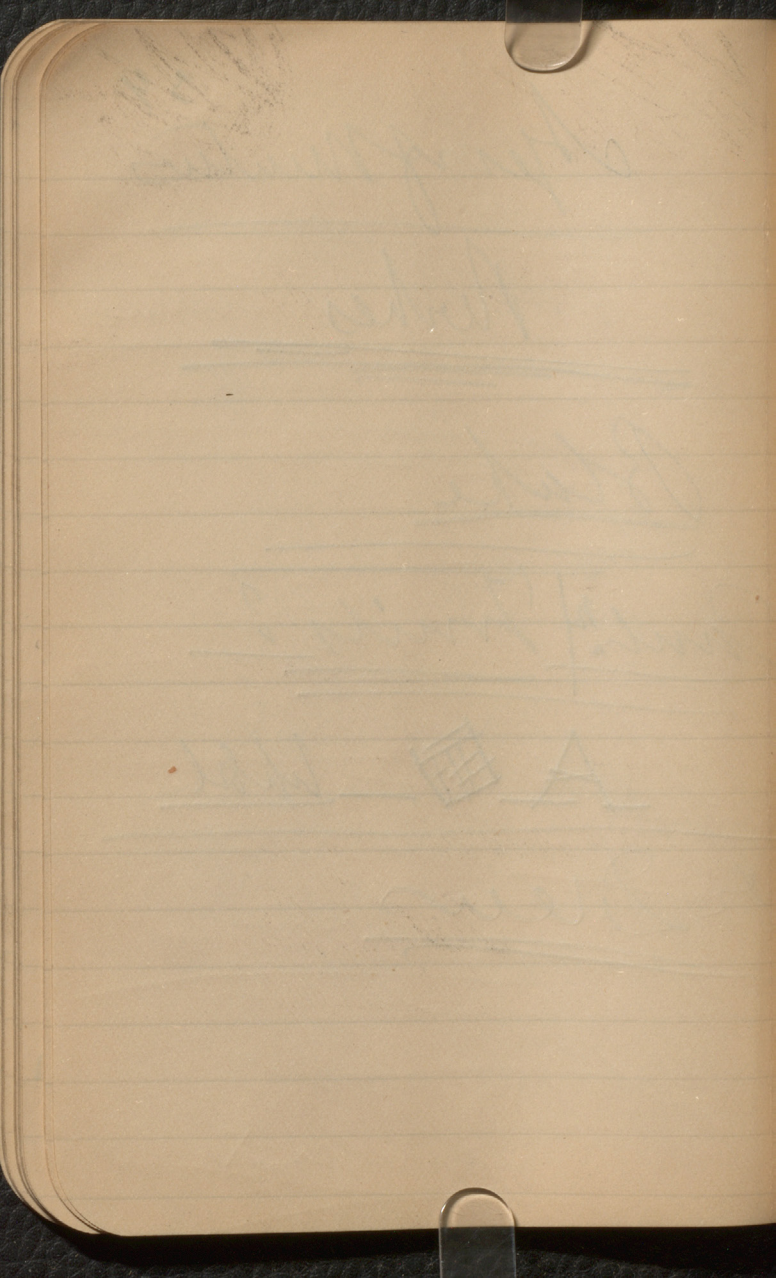
Perkes

Blake

Paulⁿ | Truittⁿ

A  Upst.

Dr. Drew

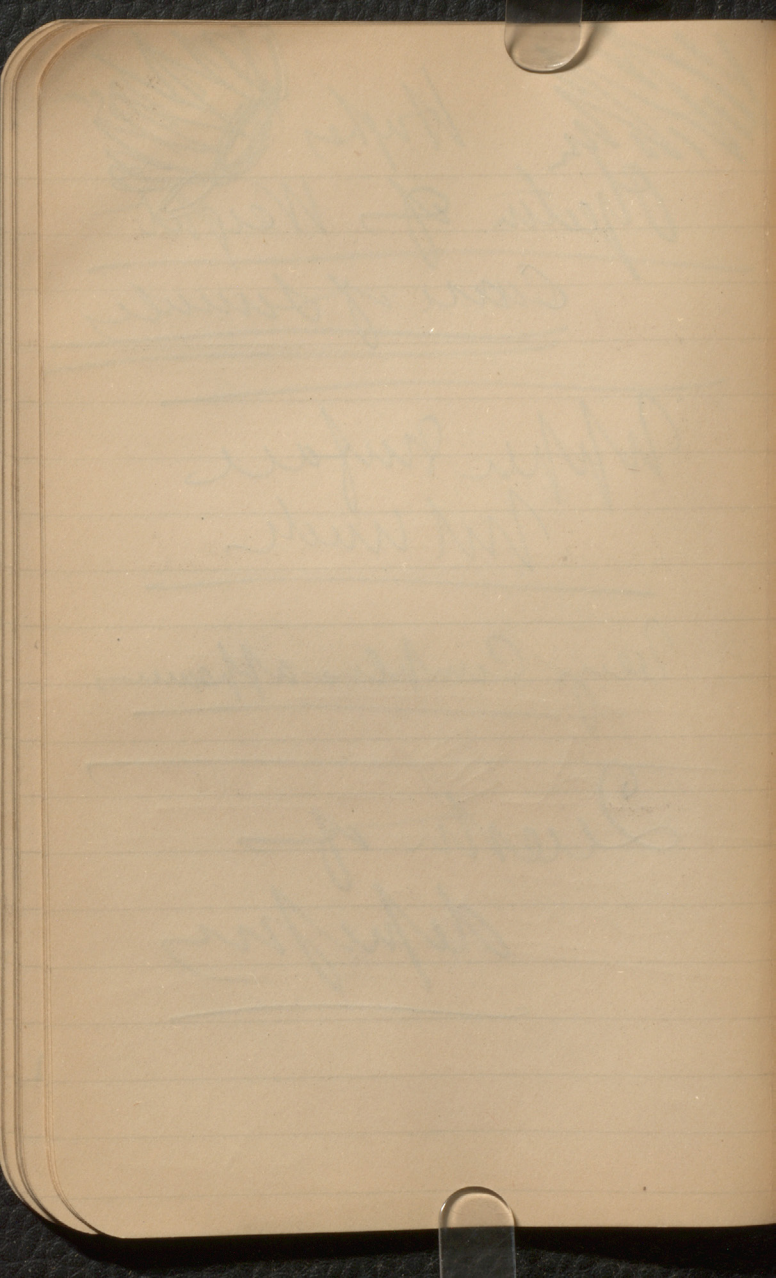


~~W. H. H. H.~~ Hughes
Object of Weight
Case of Sundry

Upper surface
Not used

Very Complex appearance

Quartz of
depression

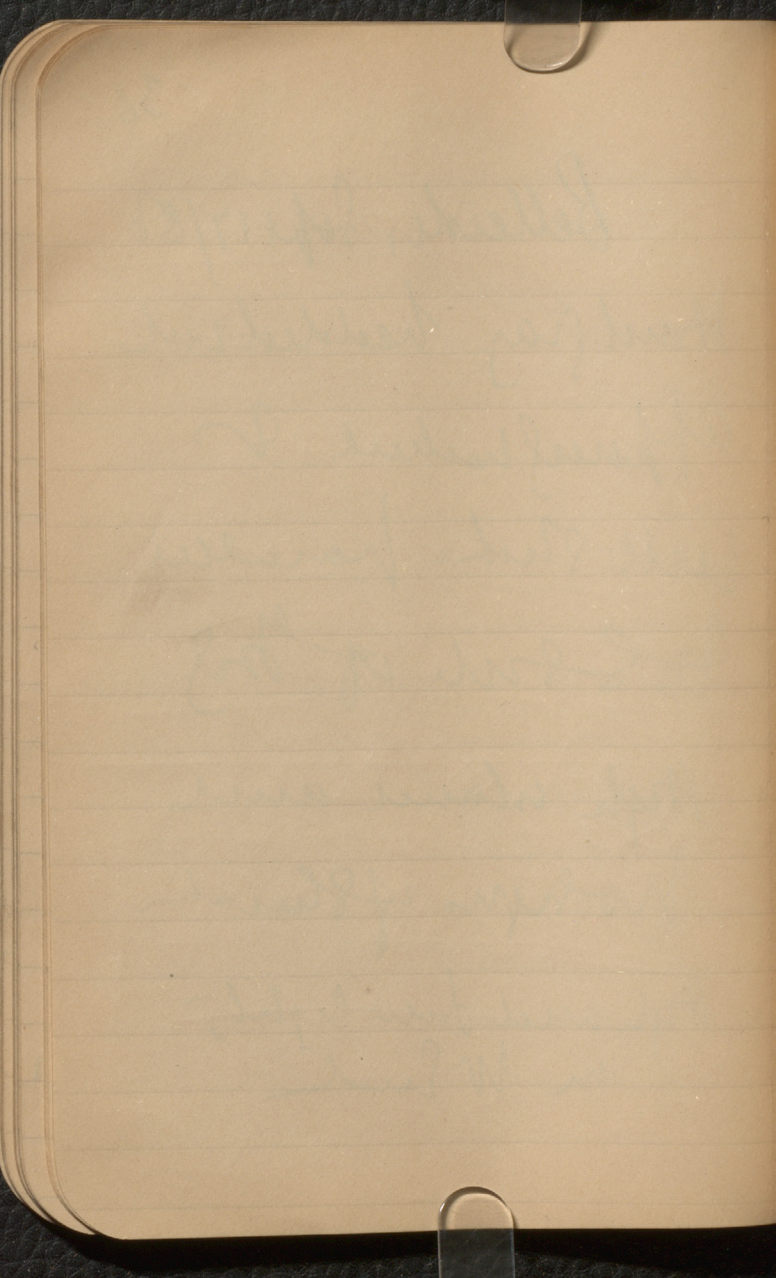


- Belleisle, Sept 17/86

Hard gray bedded rock
 appeared to
 with strike parallel
 to S side of bay

High island and
 no signs of structure

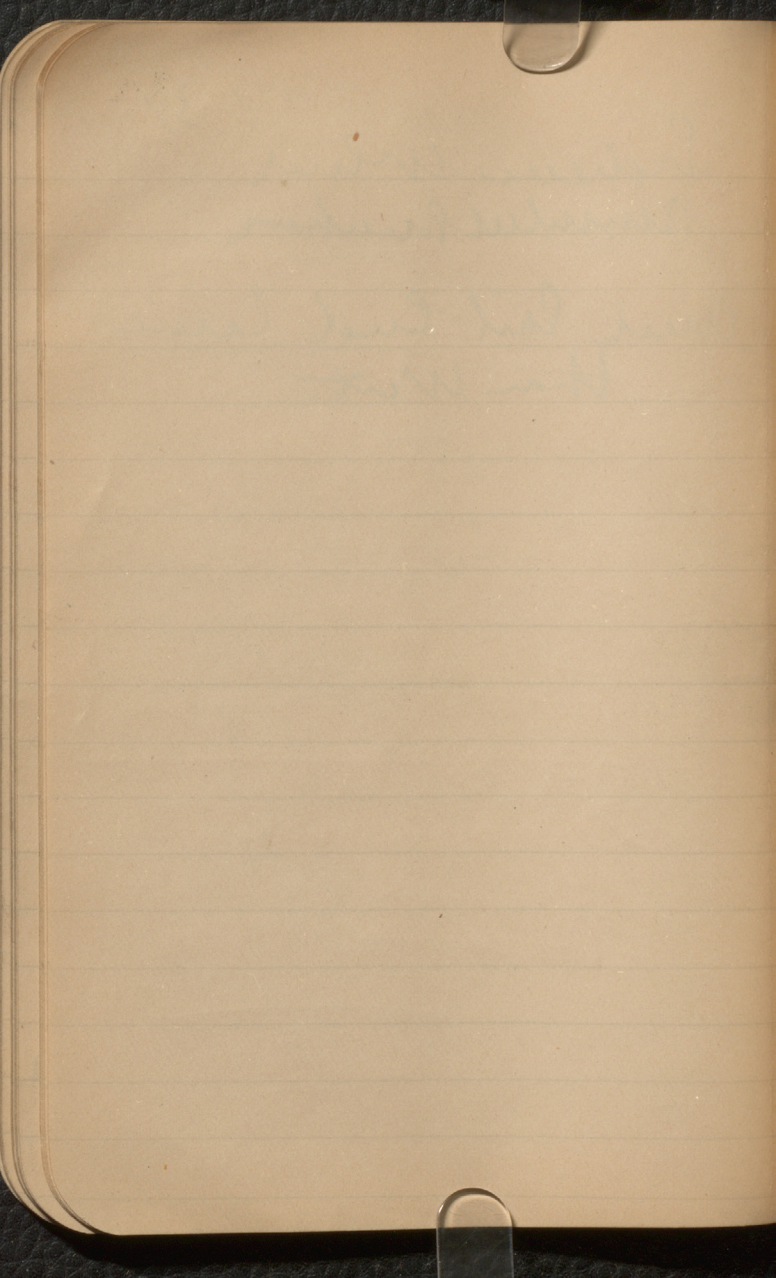
High and low lights
 on W end



37

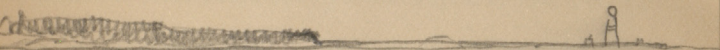
Examine wheel
around machine

and find out how
than West



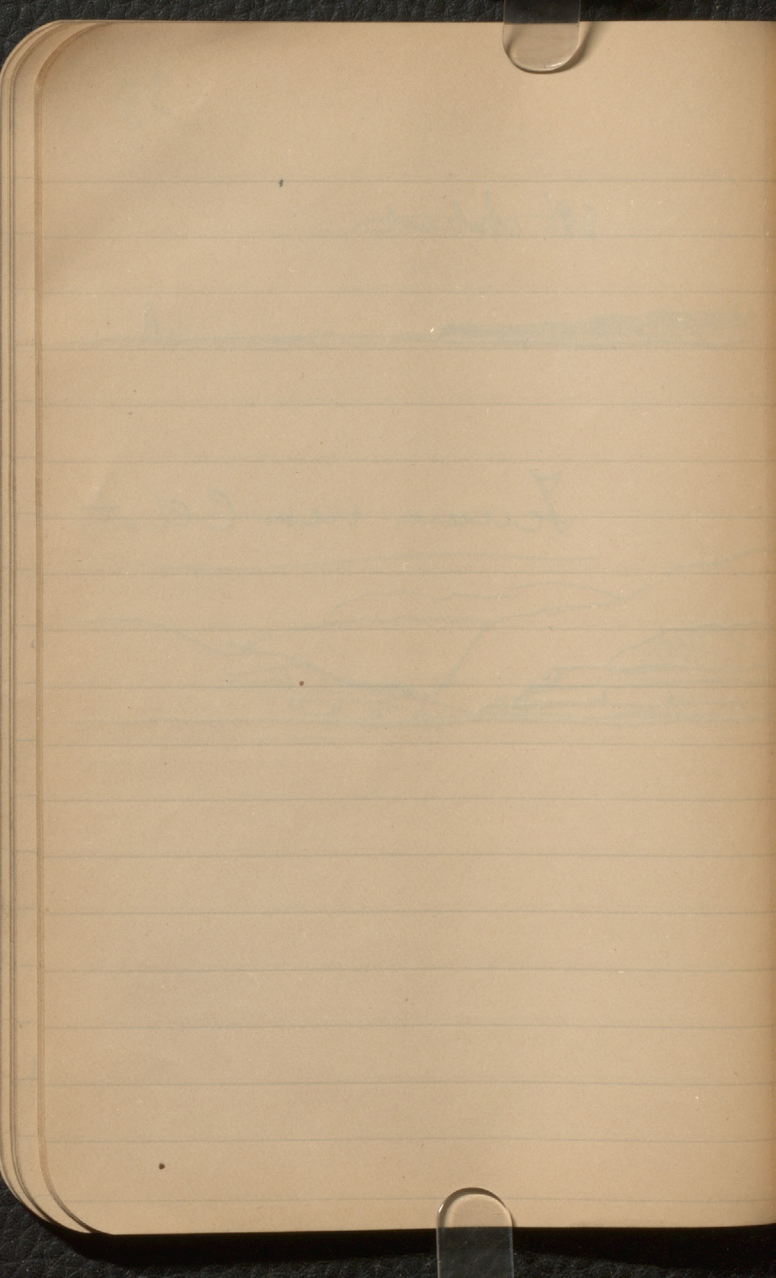
38

SPt chateau

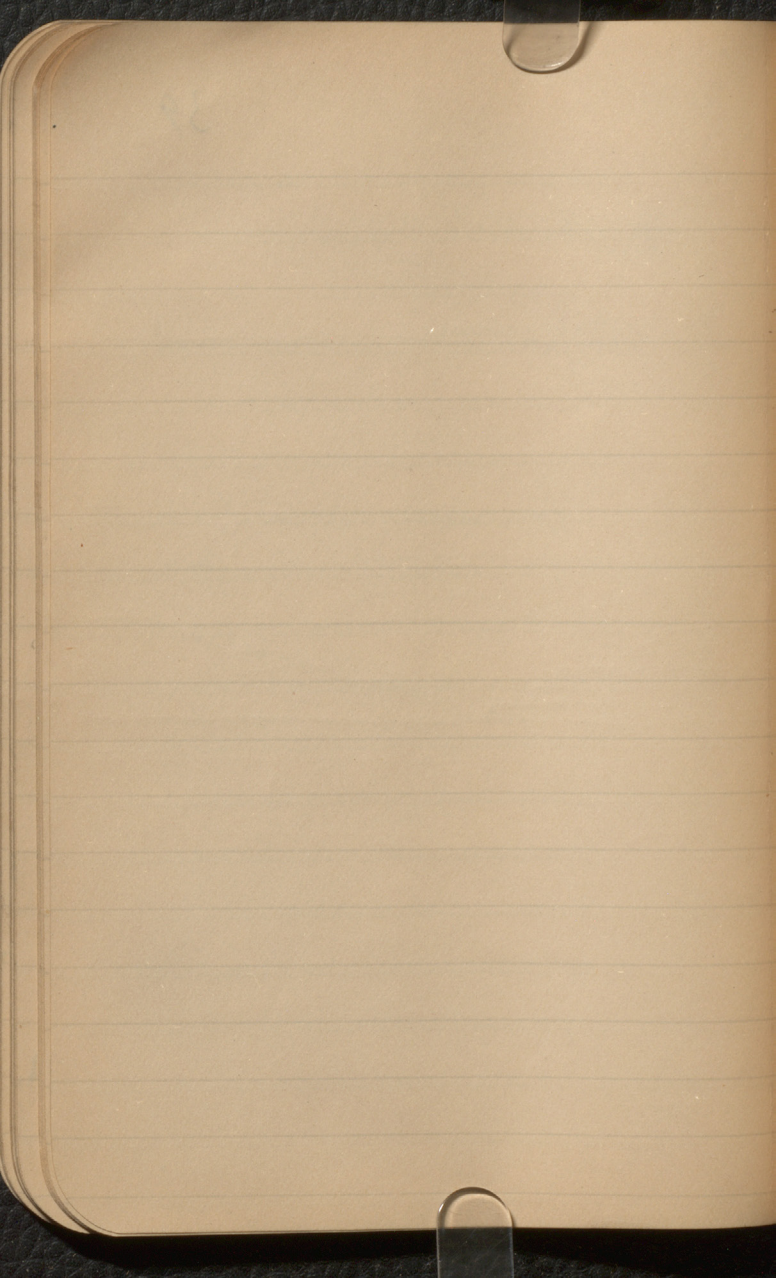


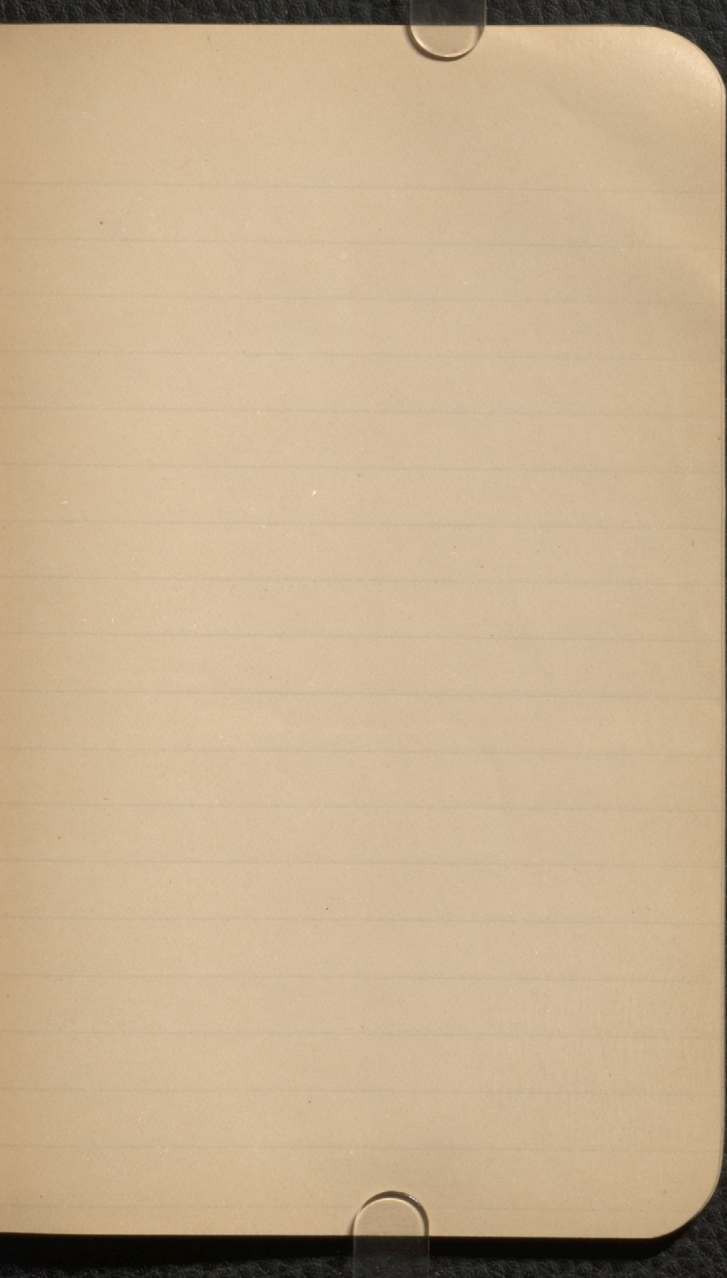
Terreux near Chat

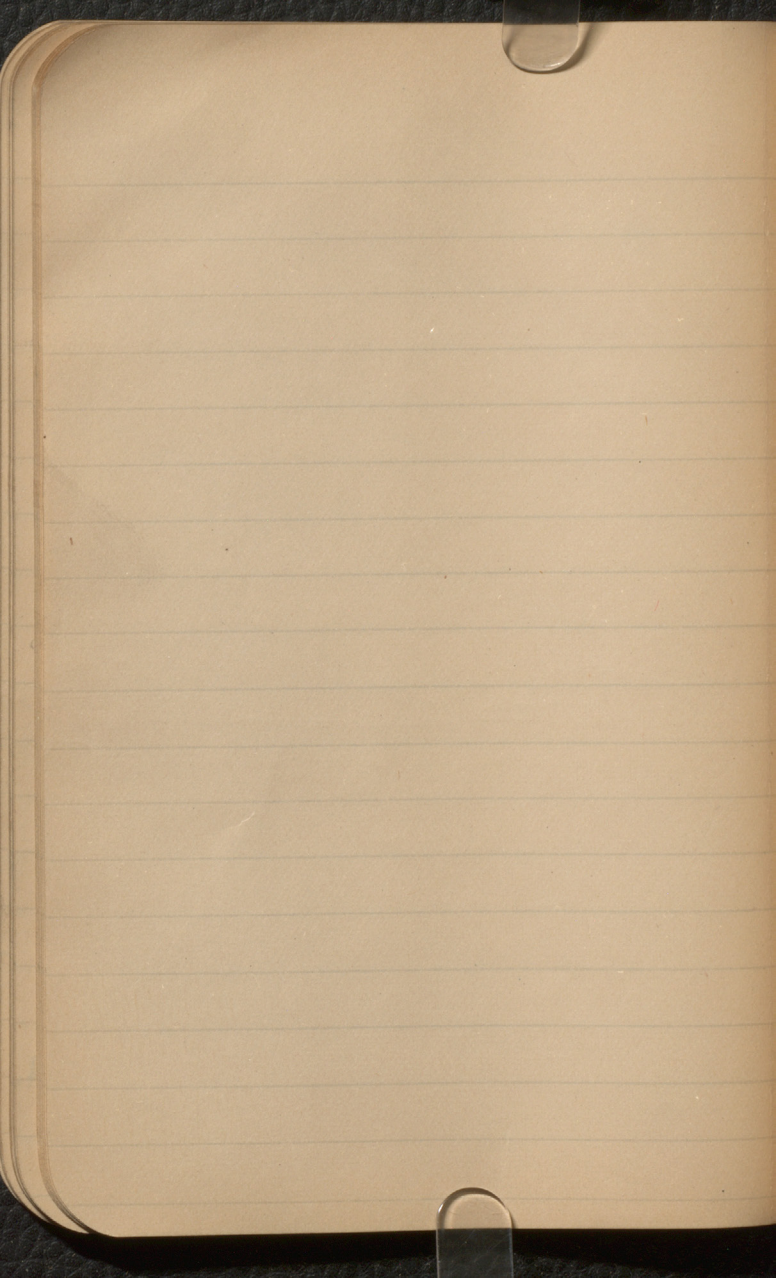


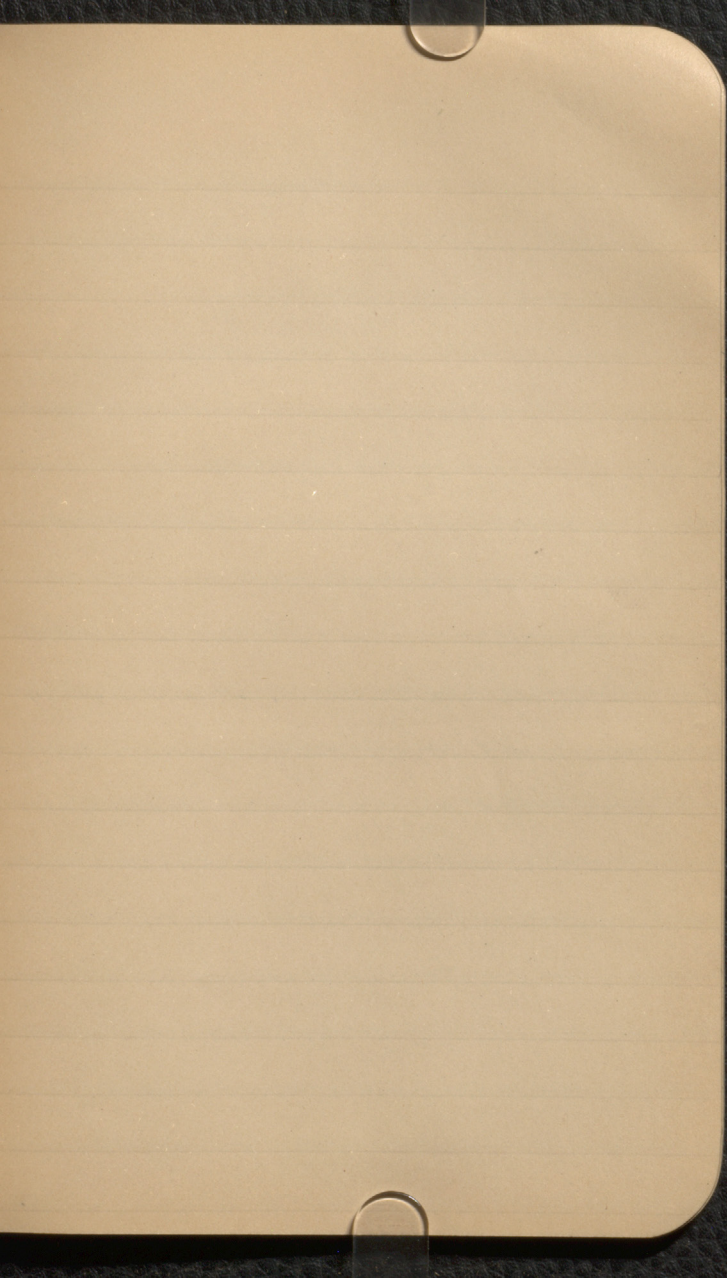


39









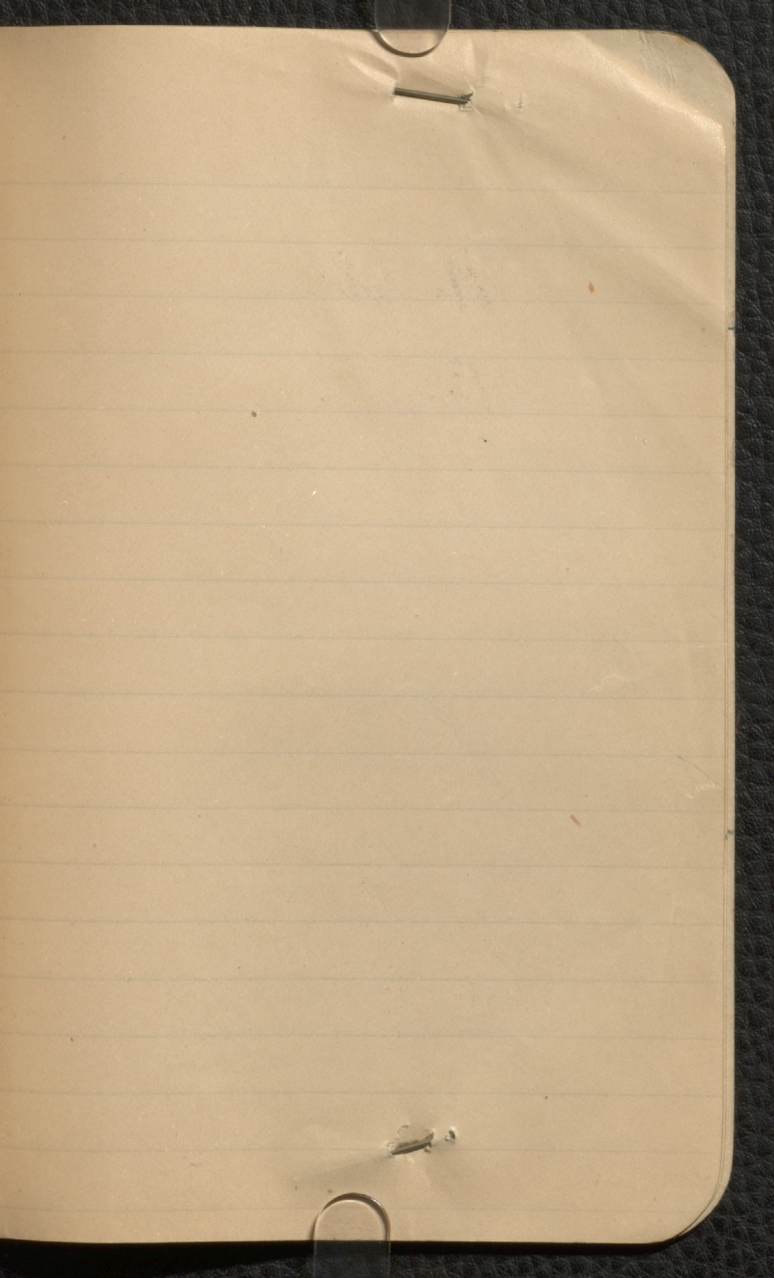
Franklin Park Park
~~at the site of the~~
East Parkham Rd

Franklin Park

The end of the world
is not a place
it is a feeling

11. 40

12. 18



Dulau

37 Wholy

Model of Journal

Edwin Smith

Sculptor

Sheffield 1846

9 ms to minute

One model is 18 ms to minute

Heating
Furnace
Steel

27

