

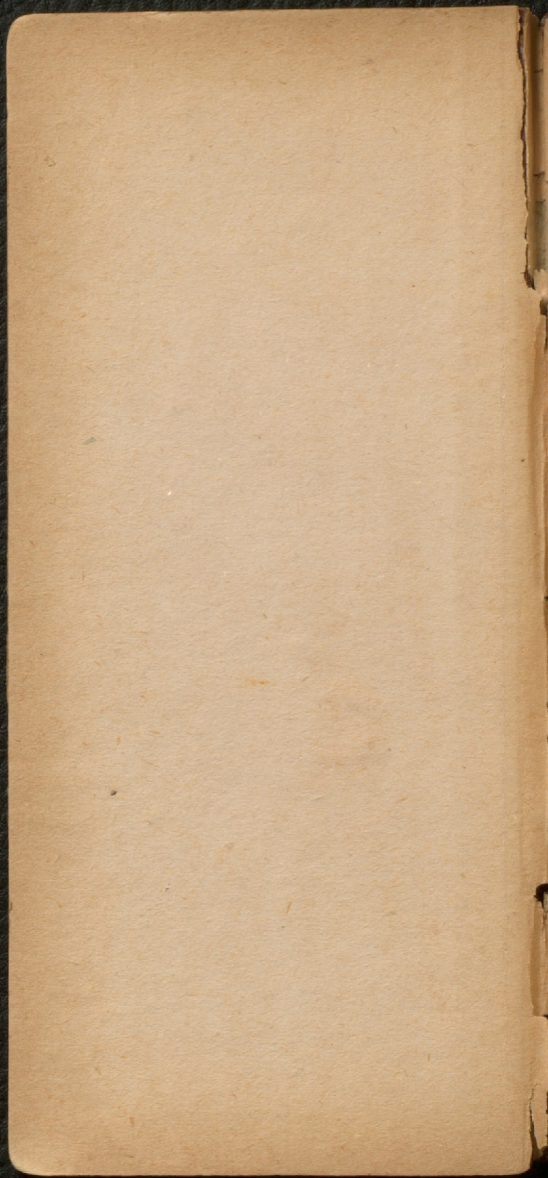
Bois de
chaux

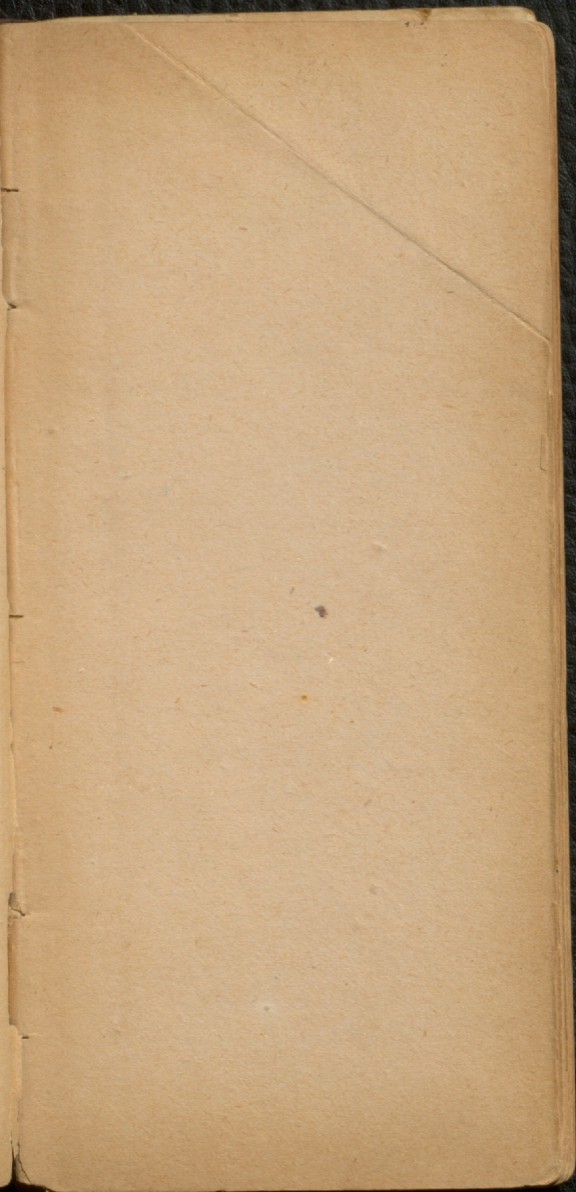
1881

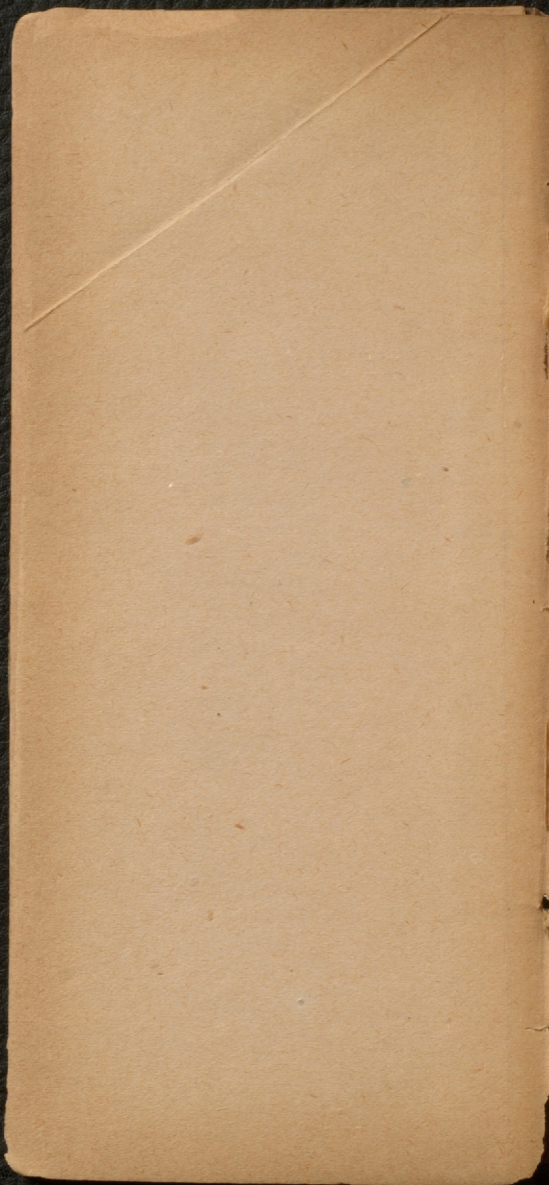
Pondreux

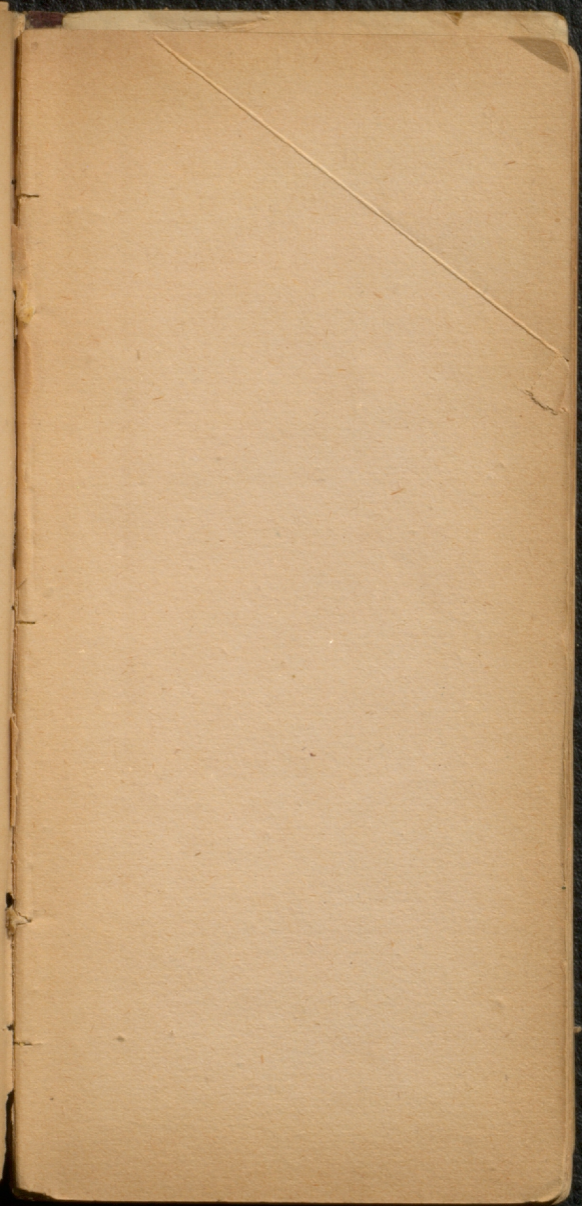
Free

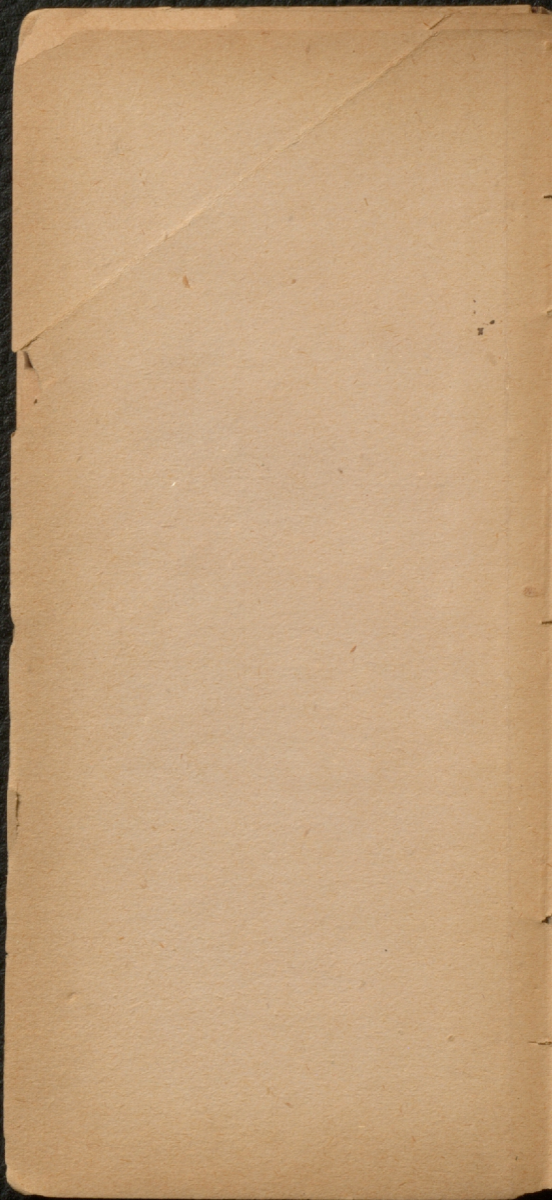
Sextens be











Campbellton

Aug 22/81

~~Shore W of Campbellton~~

Below Plate

Campbellton Det

N 30 W

∠ 30

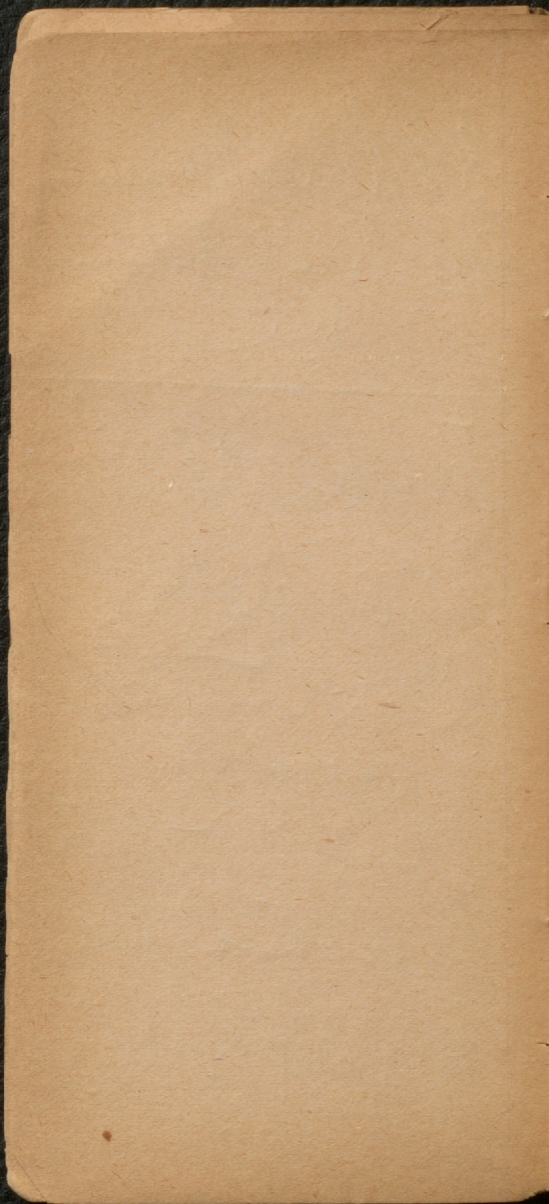
Merland by

Sandstone &

Crinoid Holes

50 y

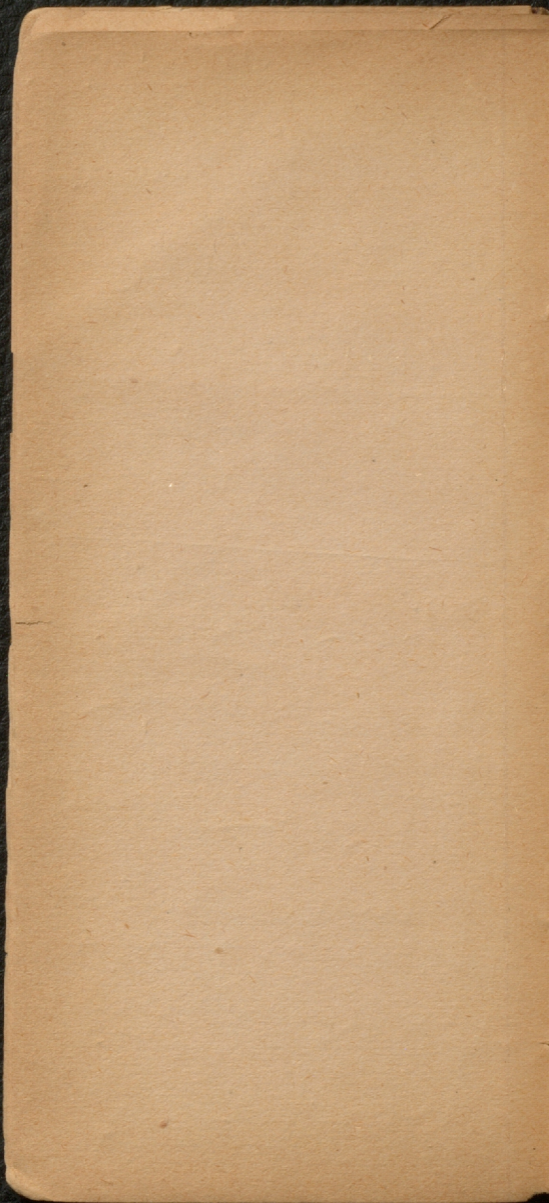
abt 100 ft seen



Hard Shales
with thin
dyke?

dip $\approx 20^\circ$

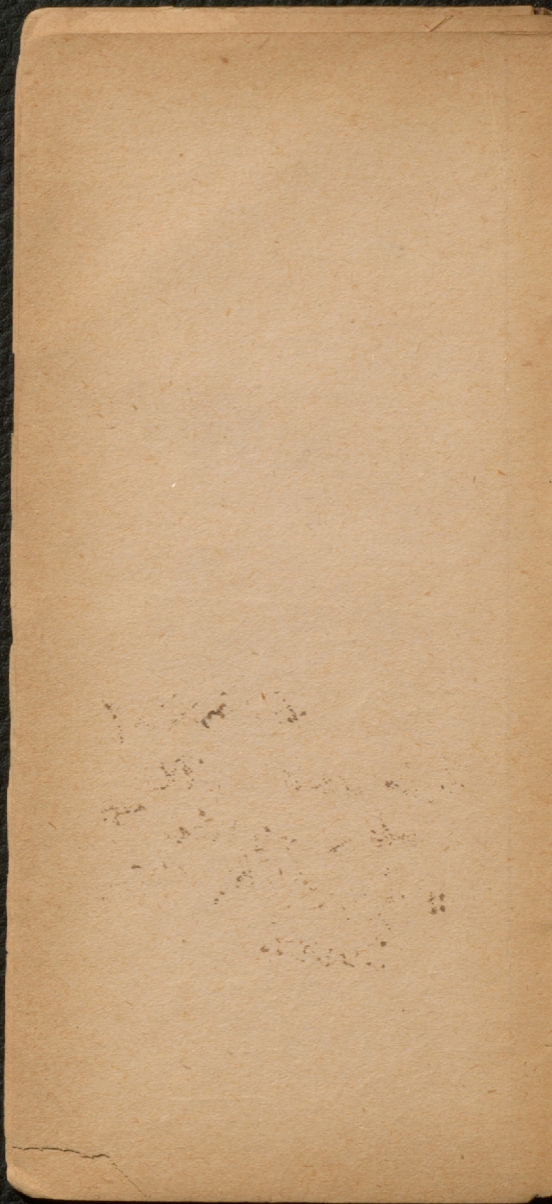
Then hard
shales with
beds — bed
of unconsolidated
hard shales
hardness



both above
and below
it —

Also to be
below

Then were
hard shales
and were
sublime
of



Dip at last
plane at $20^{\circ} E$
all 400°

Series on whole
seems to
be descending
to the W

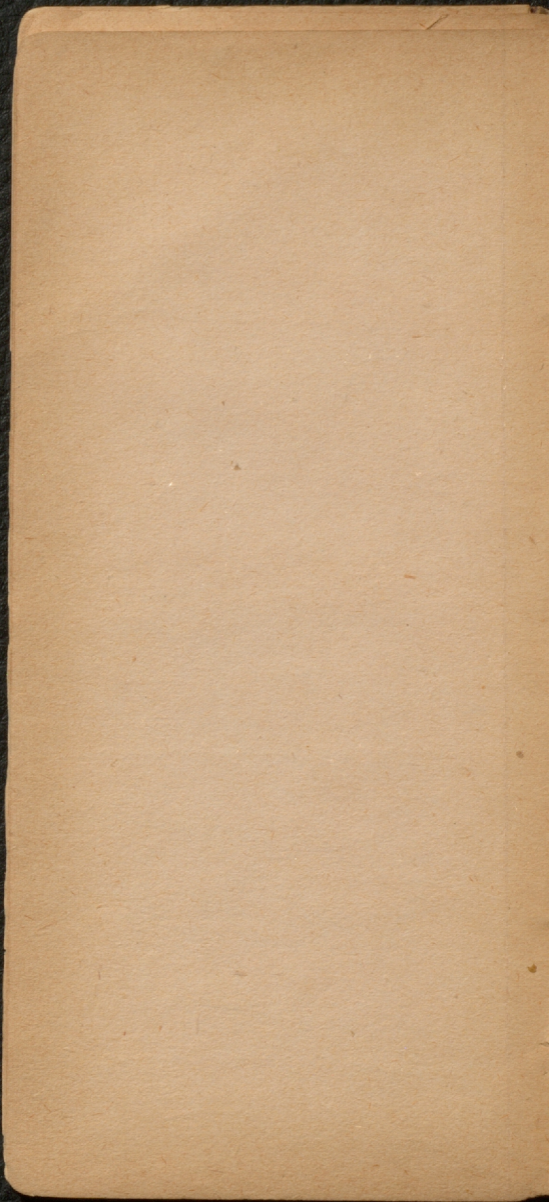
and into N. Valley

dips and with
verticalized beds
& trap dikes on
flanks

See further on
for section

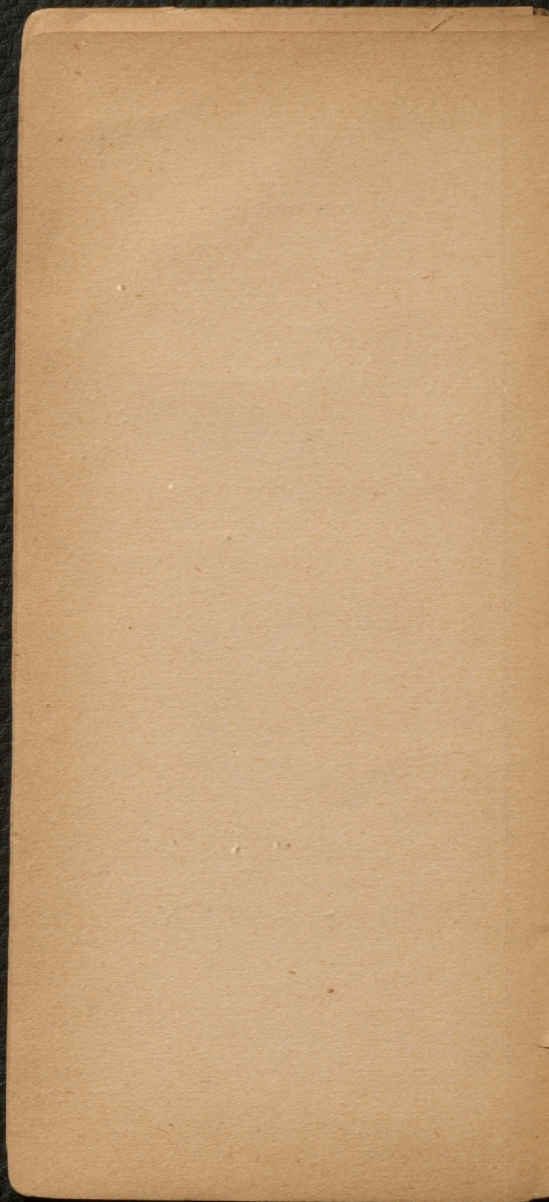
Top Hall
with various
green and
white
spots & lines
top & bottom
slate
& green
intermixed
with light blue
& white

Green must
have been
margin



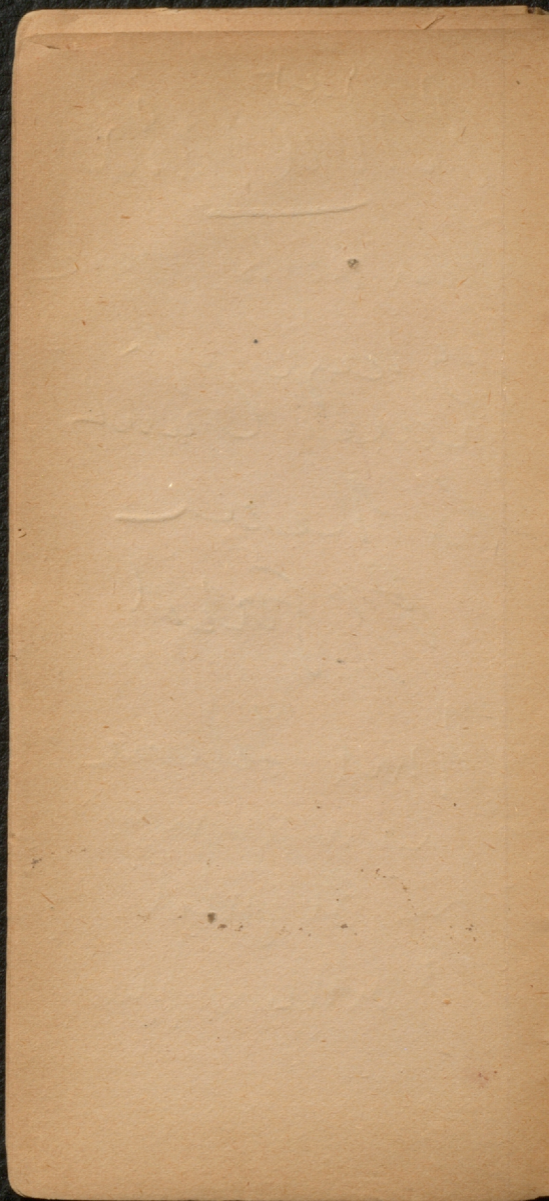
Gold Schumann
Wesley

Near old
Shine



^{Sas}
Pointe Saint
Pierre Light House
by keys of
General Court
to New
Orleans

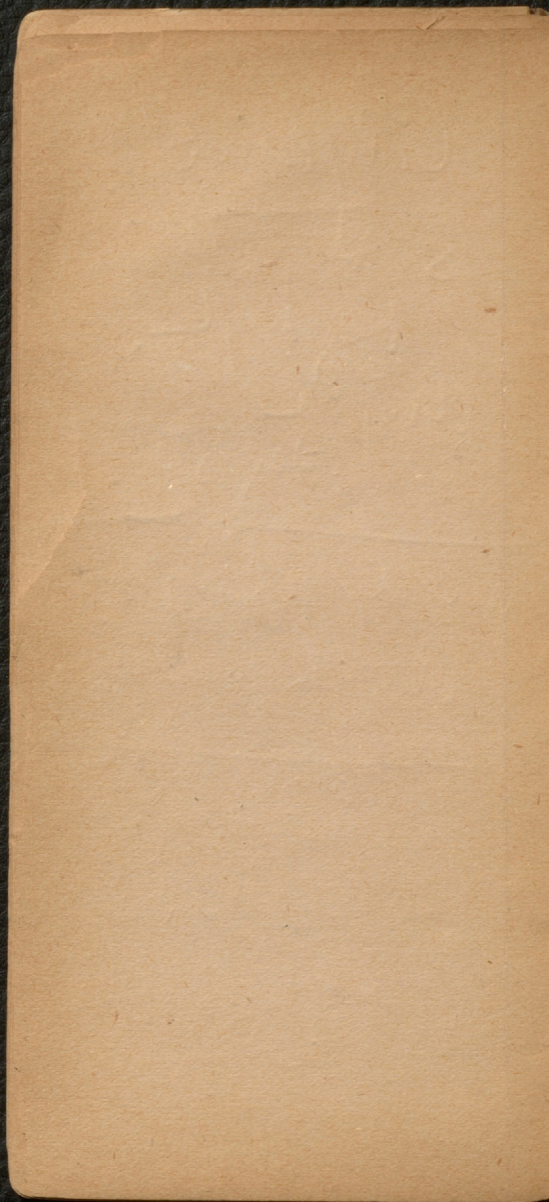
Pointe Saint
Pierre is in charge
for St. Pierre
further west



Cylinder
S. 20° W
veg high
Angle
by 800

Formed by layers
with plants

Probable of Dec
Cylinder with ~~leaves~~
of ~~them~~ in ~~spines~~



Cup of paper
Campbell

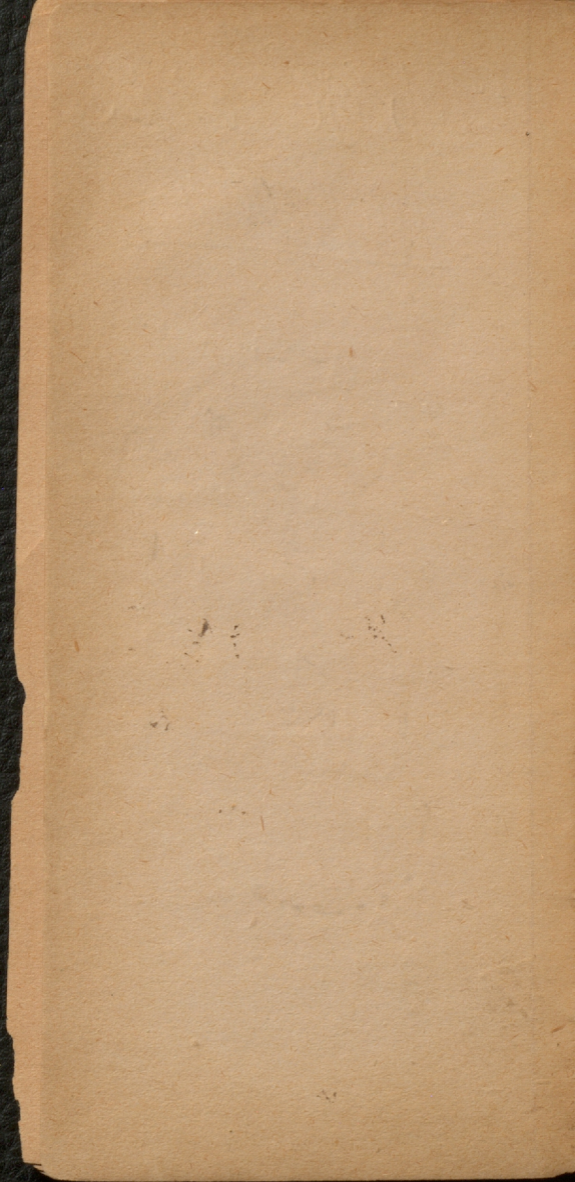
My paper
Dunk Rule
Cure Conventions

Legs of paper
Paper found
Dunk

Dunk

→ 100

Pub near
Verdille
of England



Monday ^{Bordeaux} June

Levy Post

Can send

& copy

of \$74.00

the article of
Spencer

Free Post Notes

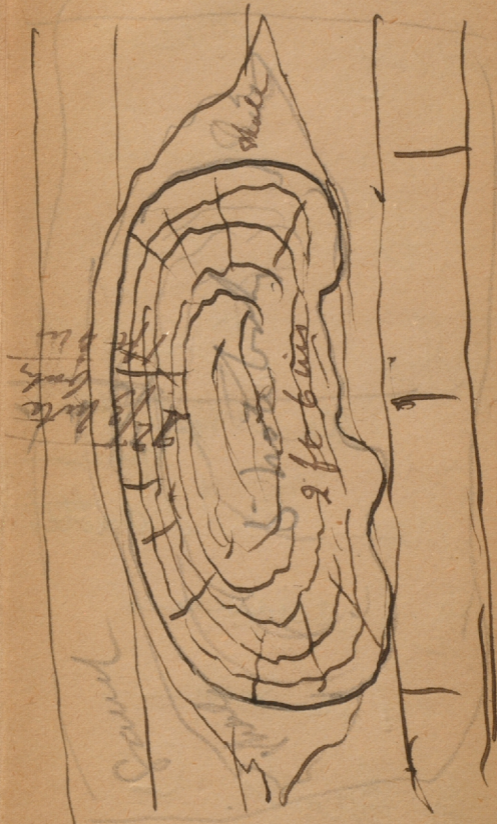
2 specimens

1 in salt

a draft to

plane

of books

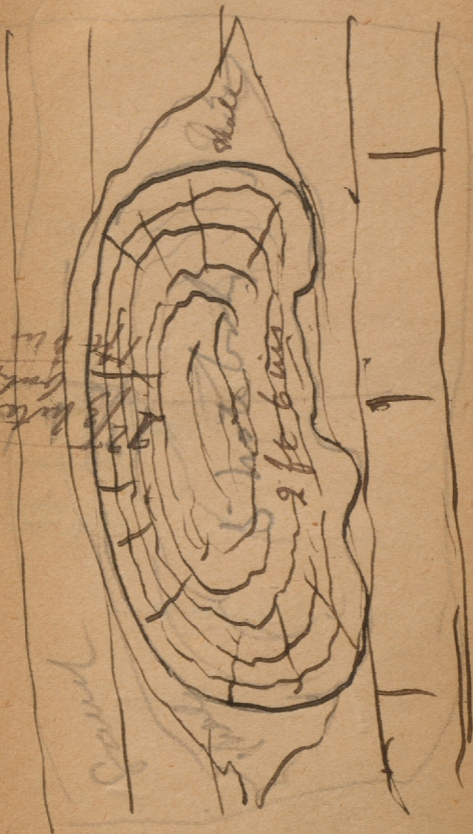


This must have
been a picture
book

In corner found
stone

Has a denture
arranging
work book
about 1/10th of
inch thick

Part to Shale
drifted
in sand



Shale

2 ft 6 in

Sand

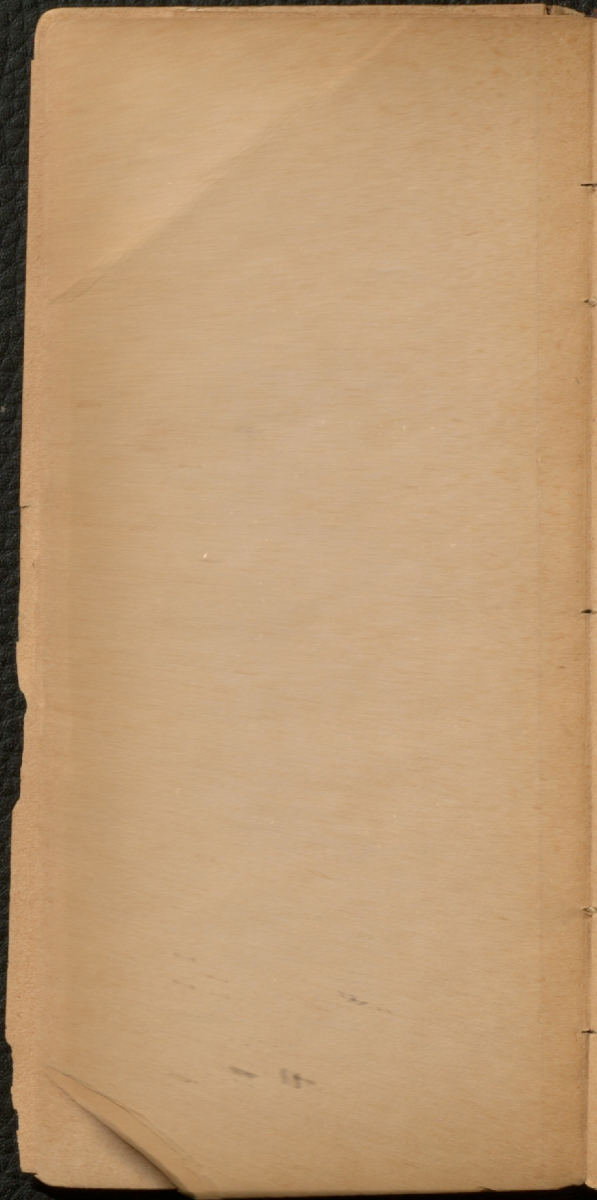
127
128
129
130
131
132
133
134
135
136
137
138
139
140
141
142
143
144
145
146
147
148
149
150
151
152
153
154
155
156
157
158
159
160
161
162
163
164
165
166
167
168
169
170
171
172
173
174
175
176
177
178
179
180
181
182
183
184
185
186
187
188
189
190
191
192
193
194
195
196
197
198
199
200

This must have
been a primitive
trunk

In corner sand
stone

Has a distinct
amplitude
coaly base
about 1/10th of
inch thick

Partly in shale
drifted
in base



Opposite these

Big Shales

Hard & soft

Felites

Lyke

The hard shales

are felitic

Curved Felite
? of same or
older

as

+ found
a fort or mine
of pits appear

2 Apples
Bram poke
White grass
+ Apples
August
Very hard

Sp at 10. E

> 1700

Thinking
all 6 feet
Chokes, shells
plants

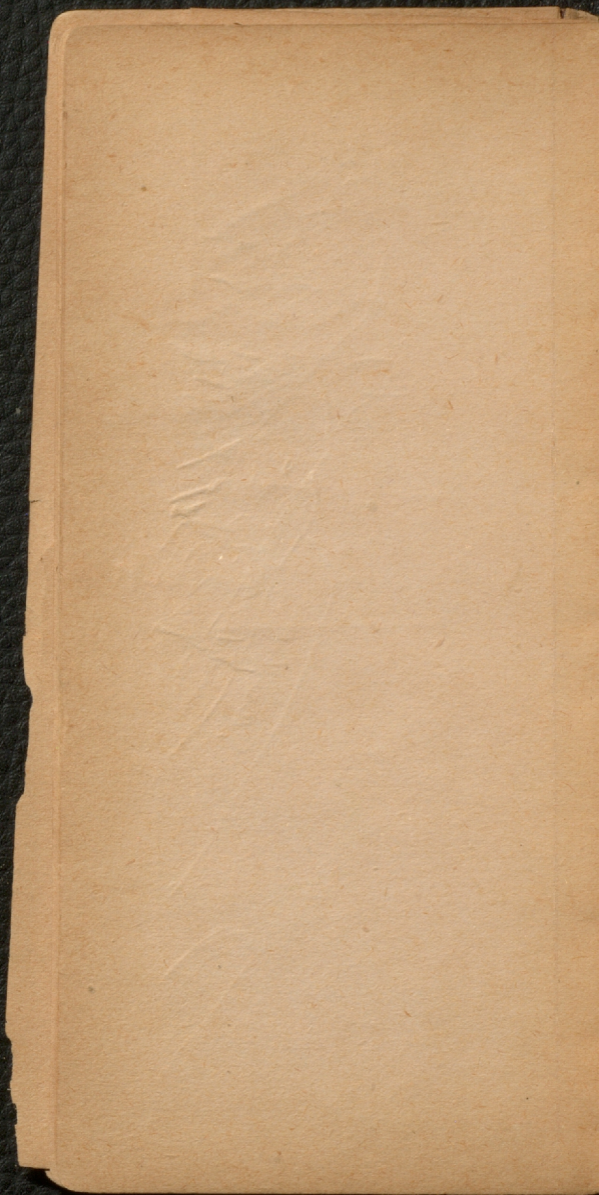
3 Pines upon
was never lost
shell shells
plants
fossils
partly calcareous
3 ft

4 very hard
sandstone
with black
trap veins
8 feet

11

White
Quadrant
of the
Tent
to
be
made
of
felt
&
leaves





Jahkmine

Sueedy

New Light House

led by Sam

Pugh

2 ^{quarts} best

Sp. high

CV 3002

Pugh has included
some maps of

June for Spent

& green epulose
rock

Up Sal. New
C. Bonctus

Gay's notes re
forms &
then see long

Up w 602

> 480

Wanted to
Black

Change in
Pamphlet

1870
1871

1872
1873

1874

1875

1876

1877

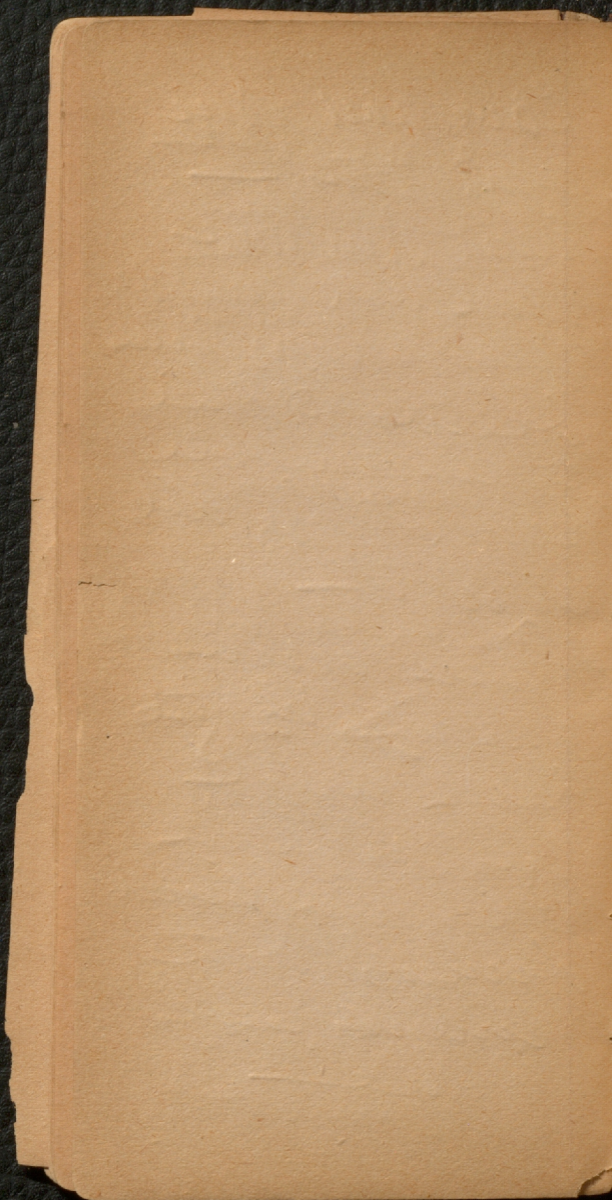
1878

1879

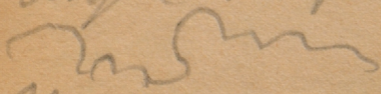
Section in detail

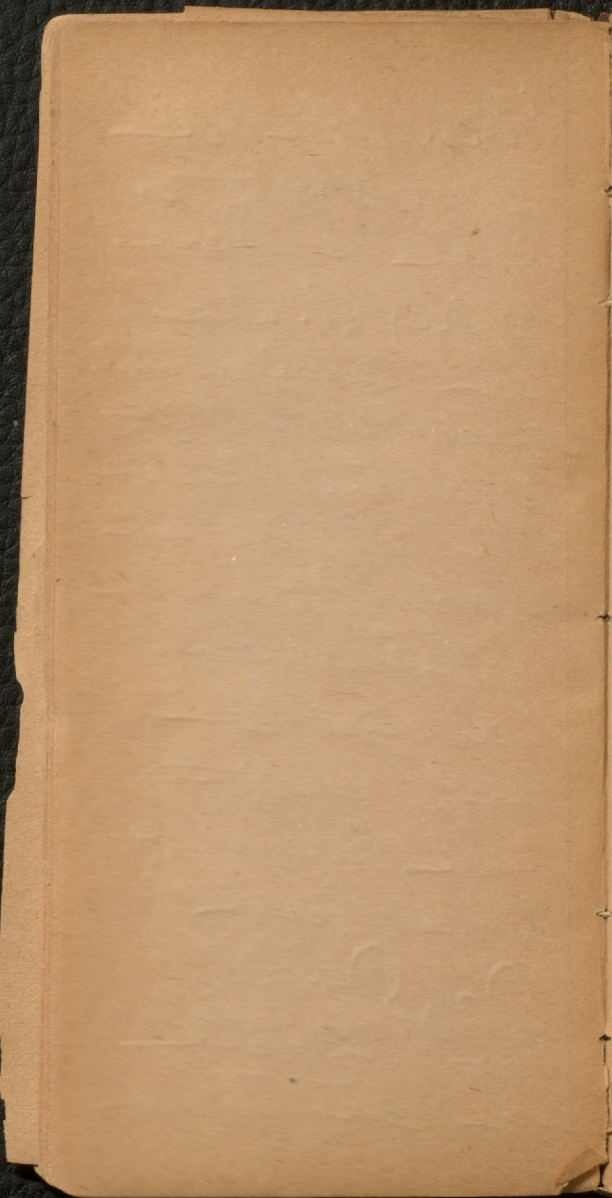
Came past Bruc
and with —
Great Branche
That has compair
when changed when
seems to be
a compacted
bed cliffs at
CV 600? —

There occurs
a bed in the
beds and
that is seen
a bed of hard
summit with
concretions
The



Then after a
little space is
seen a series
of grey shale
with coralliferous
and pyrites
Now this series
consists of beds with
many fossils see
specimens

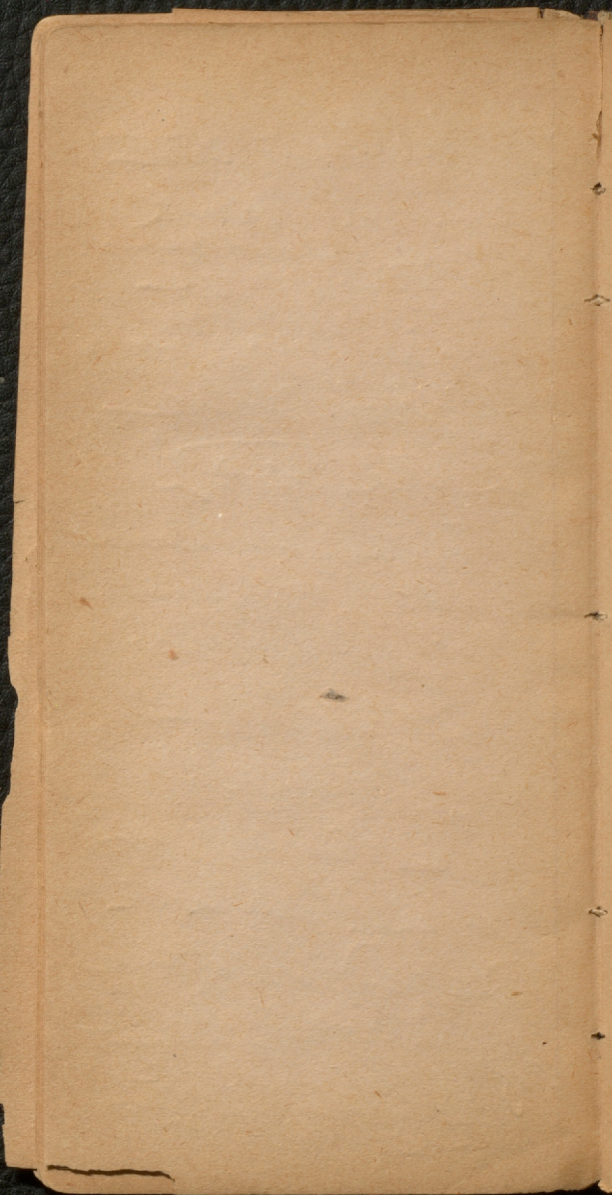
Then rest on
a trap with
a deep rounded
bedged surface

This series
is a local bank



I pressed out
a little nap
deter. In
the process
I said to be
in the nap

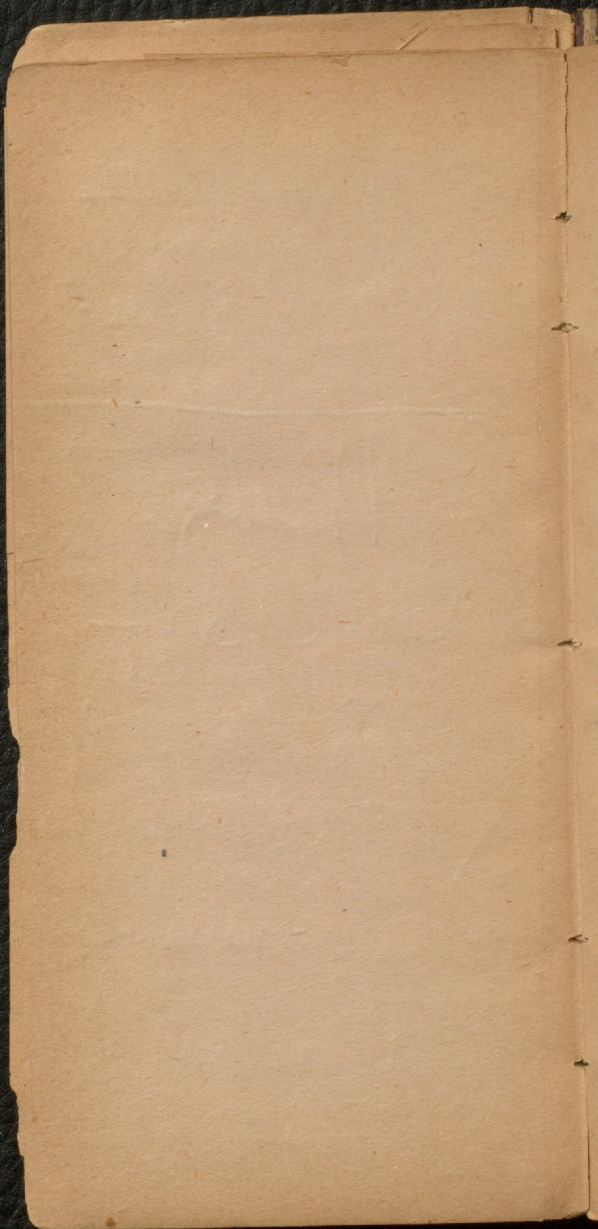
When he saw
some impact
of my judgment
that I would
not be able to

as a base of
perhaps what
I said to have
I am not
of up to
I know



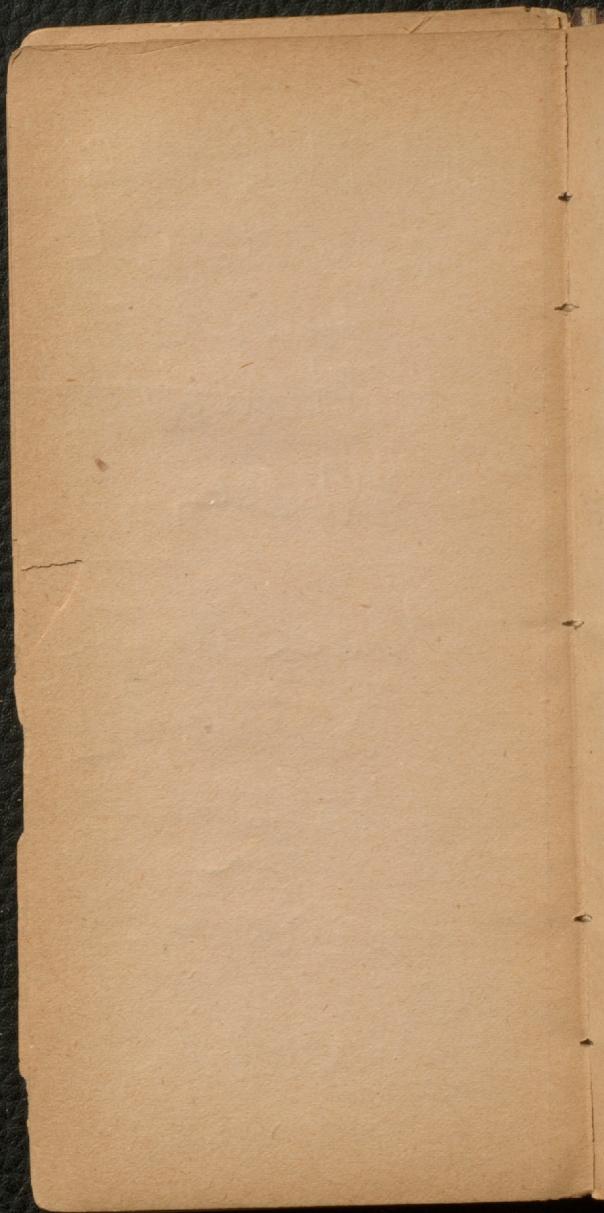
As some older
things come
up from below

Wicks
Cure of
Great Irish
Dry Shales
hardened
Blood & Speckles
Irish



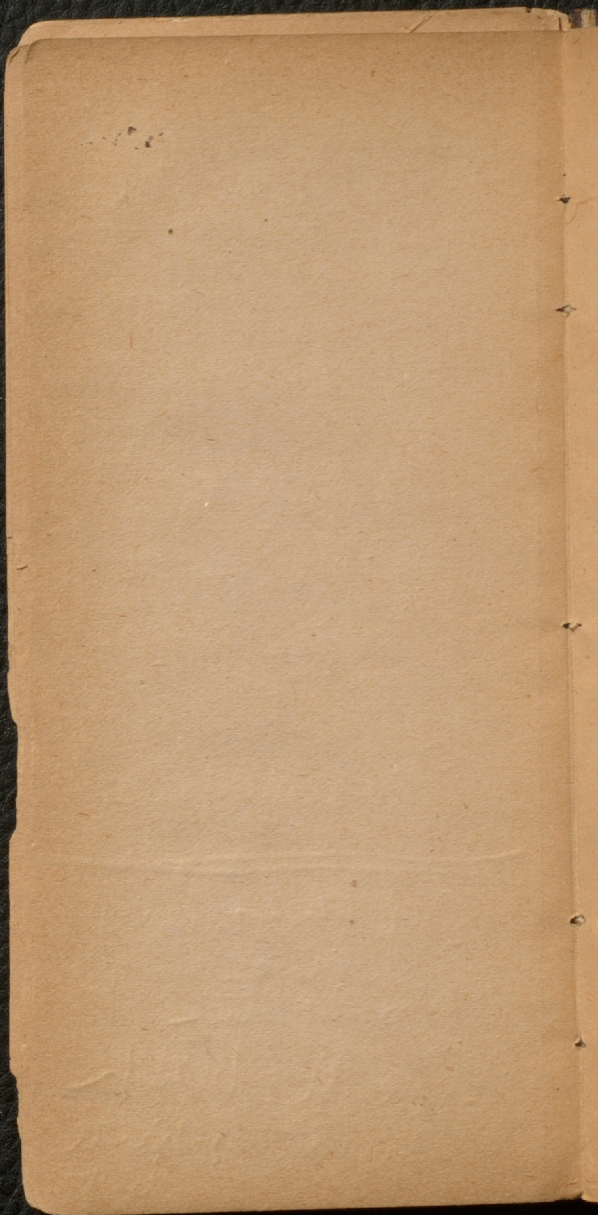
on the west
dunes, with
Fossilis
Stomatop
Shells

Then and
fossil bed
of the
beds of
Vulvardy



cannot see
thickness
of ice
but heat
is not a
regular
sweep

S of this bay
curve
no section to
north but
point $\frac{1}{2}$ mile
dist



Depth 100 fms
Cave

Deep survey
out to Pom am
rocks
Dip to NW by

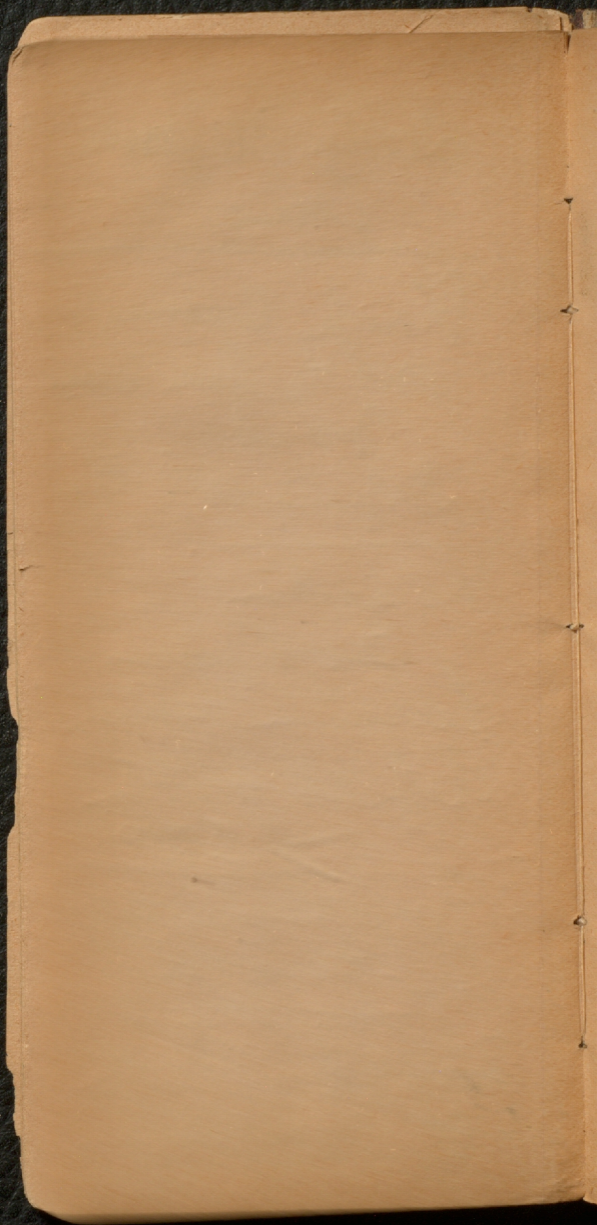
No declin

200 fms
Limestone ledge
dip at 400 fms

> 50°

fine shells &
fauna

Trilobites, Shells
& Corals



boards with
circular lenses
at bottom ends

in shape
surface of
top head

110 pieces

Dr. W. E.

> 53-6

2. Licht und
Fels

Mr. Allen
Allen House
Scott

Wesley

Crypt at
Summer

Key
Red Brown
two pellets
remains of
Paper

Seven bags
only old
Red Paper

✓ Well mounted
Mural Displays

Scientific
Covers mounted
apart from lists

Chalk kept to do

a part in
series of parts

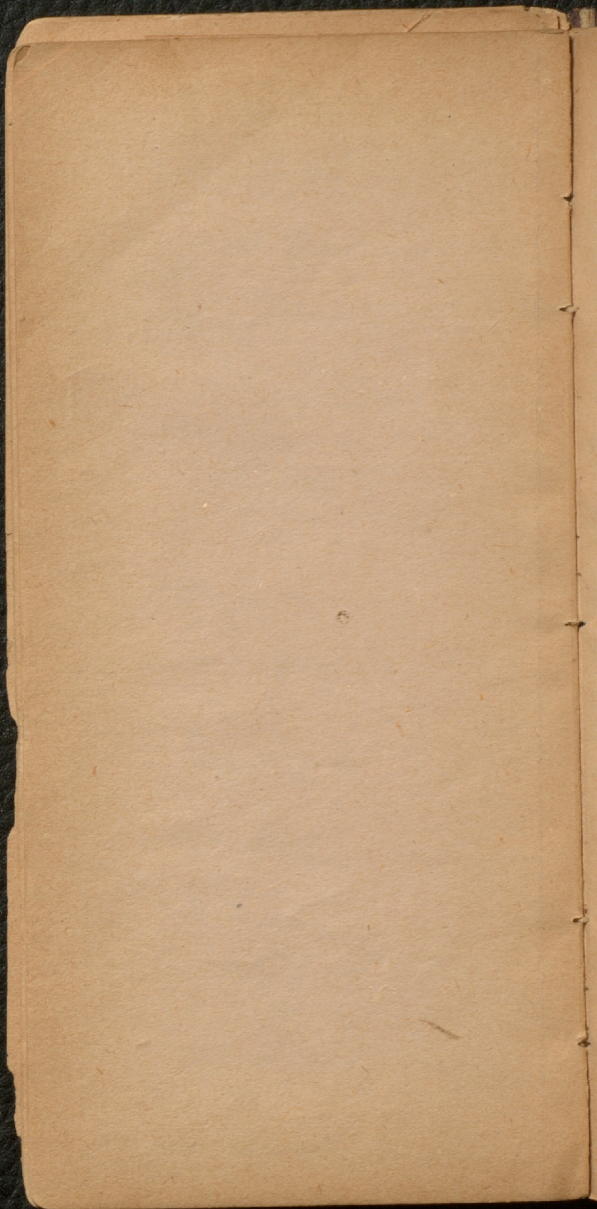
Very common
Crypsids

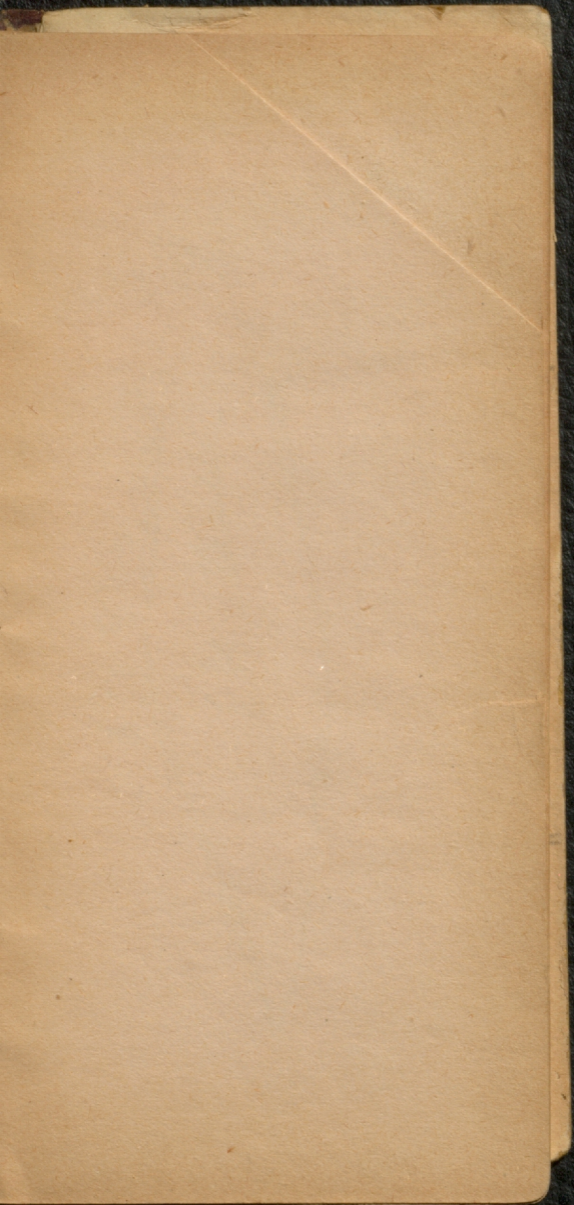
very common

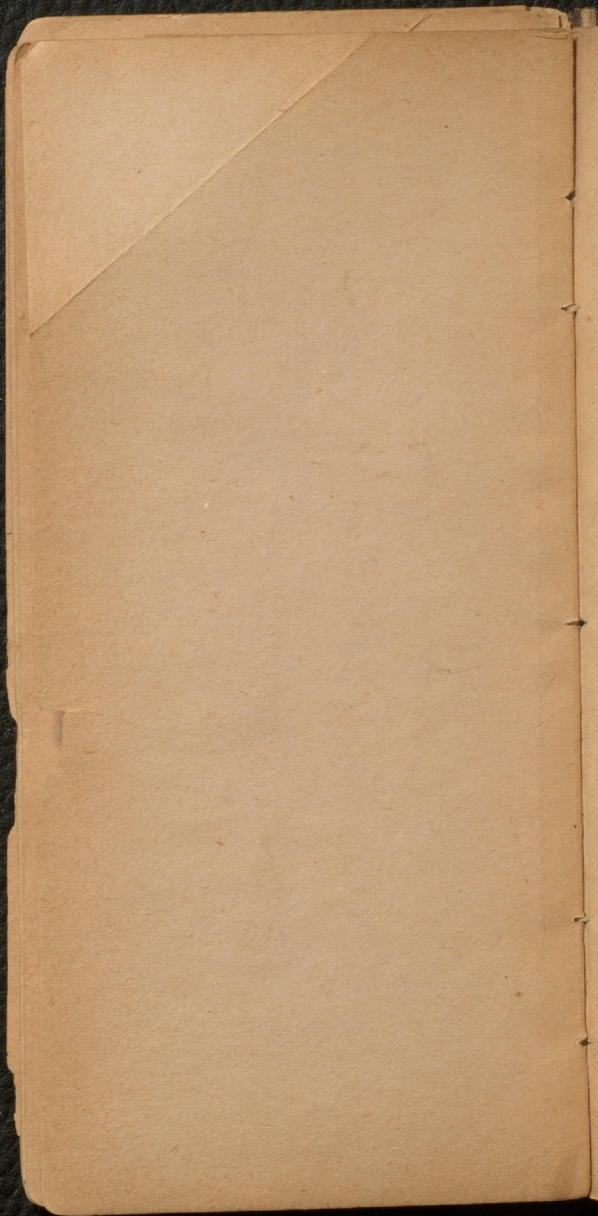
3 & 4 m

Trunks

Handwritten text on aged paper, oriented upside down relative to each other:
The number of Captains
Common Sense
Practical Policy
New York

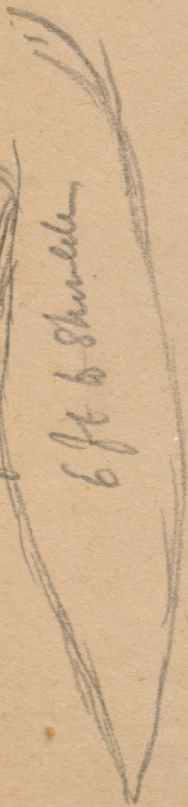






571-815

6 ft 6 8/10 in





Blind when

below ~~lighter~~
except at edge

June 1



Over church
Sun Jan March with

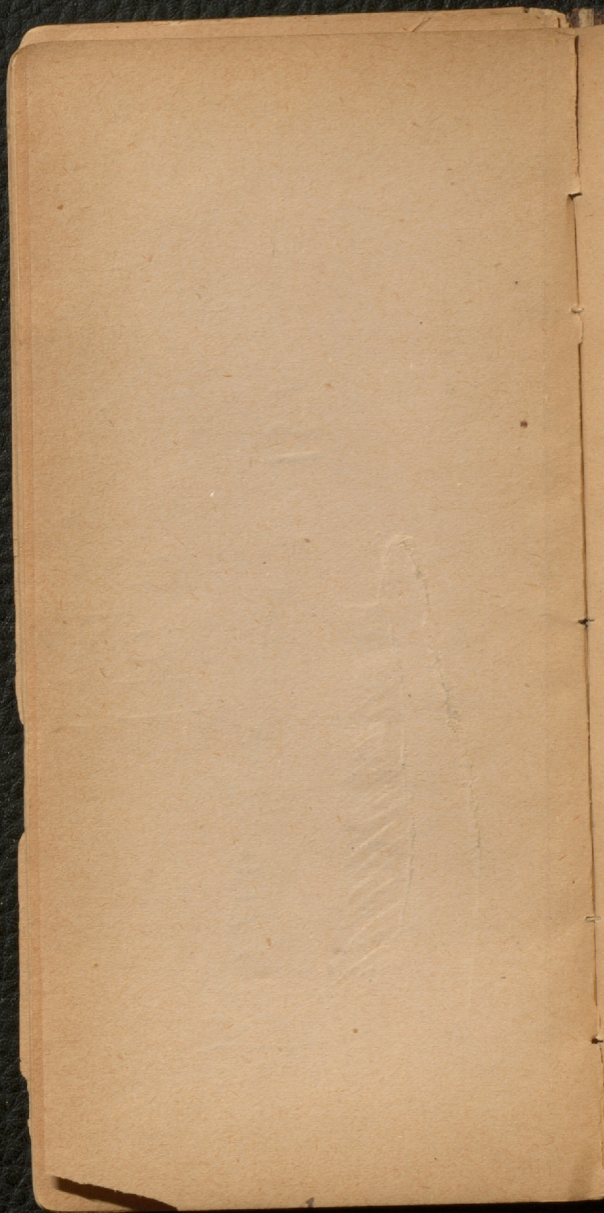
from upper

Grant when number
arrives



Ruleen for bias to 15 ties

Head & by hand made
in top, Shankhole
defected

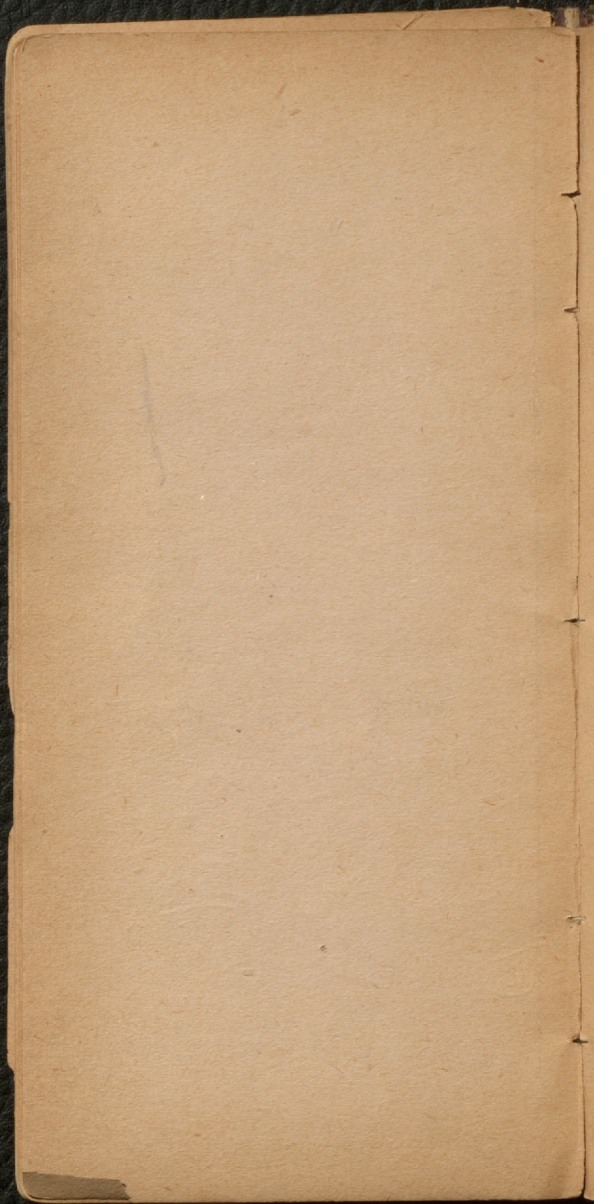


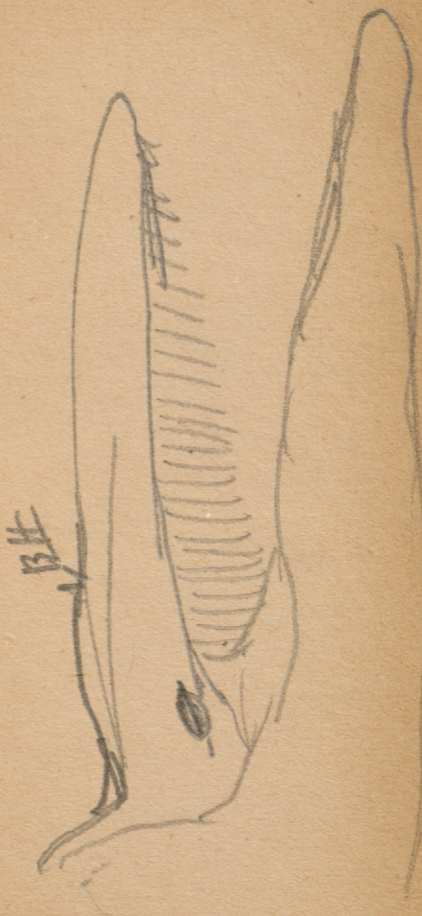
Shoulder was almost in line
of head

Eye at angle of mouth

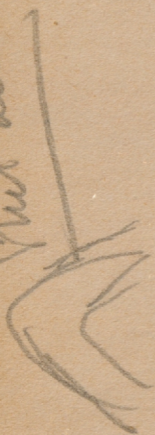
Blow hole 9 feet or more

of size



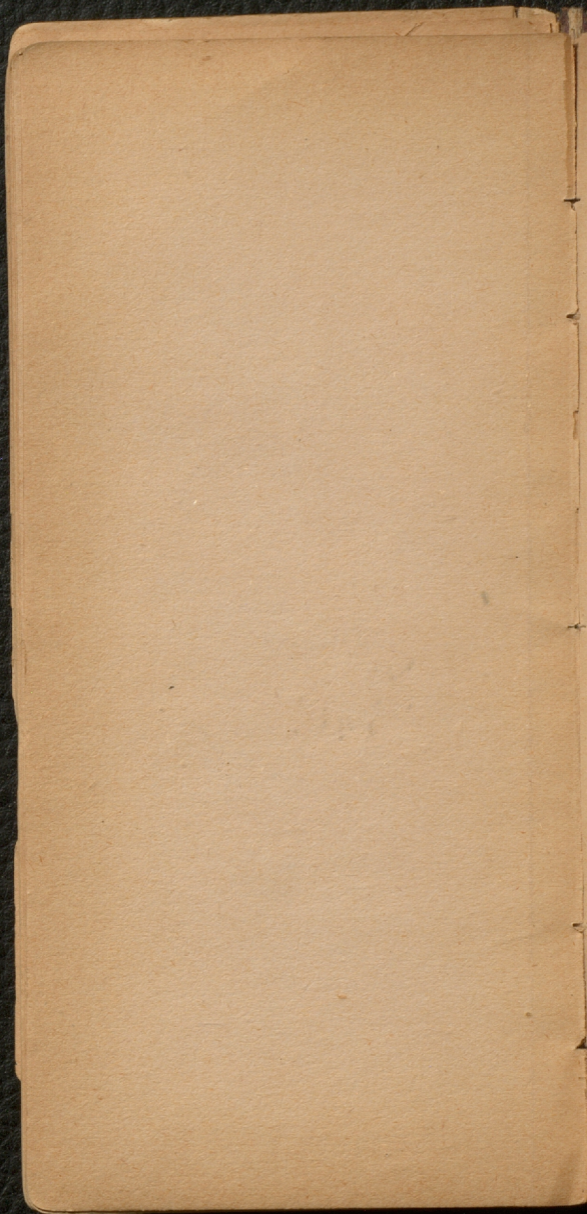


Quint acule



From blood of ~~the~~

Print intended



Arcto
V. L. H.



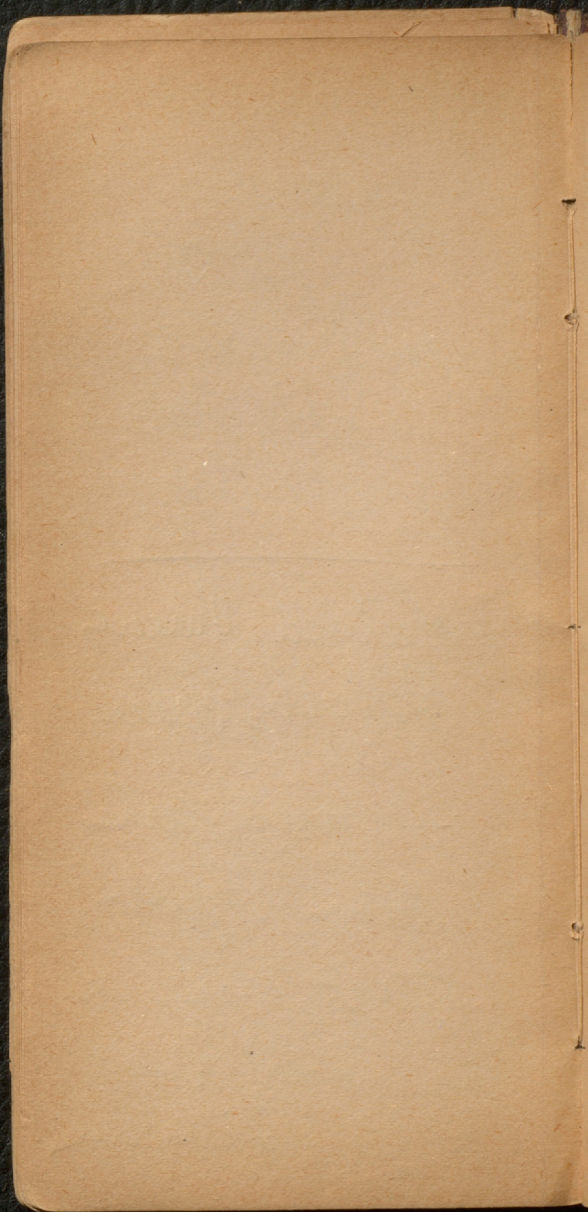
Churches near
of the Middle Ages

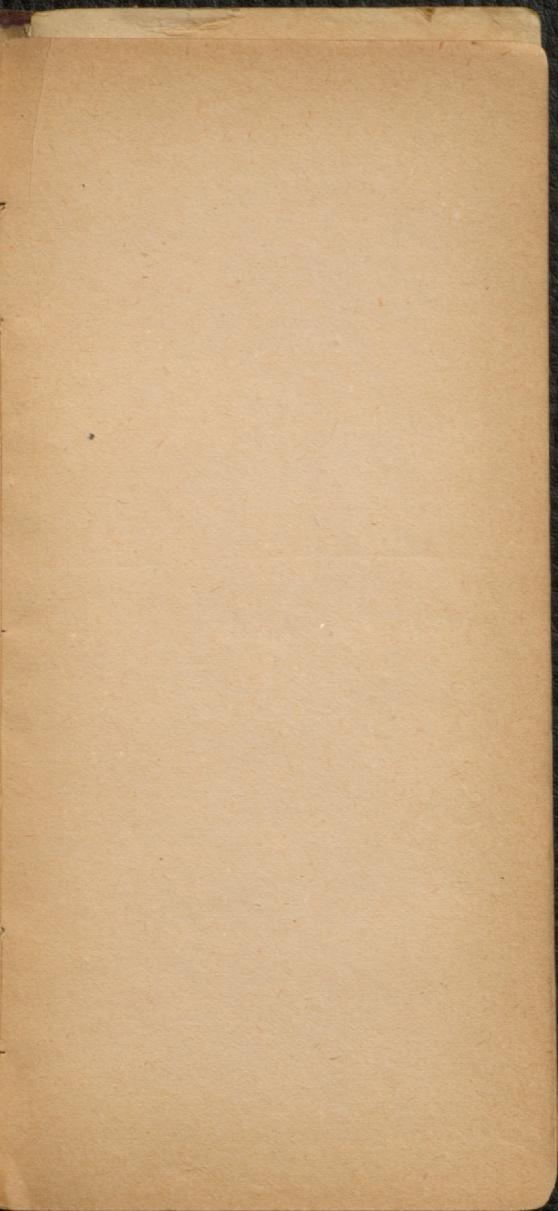
Physalidae
Gray

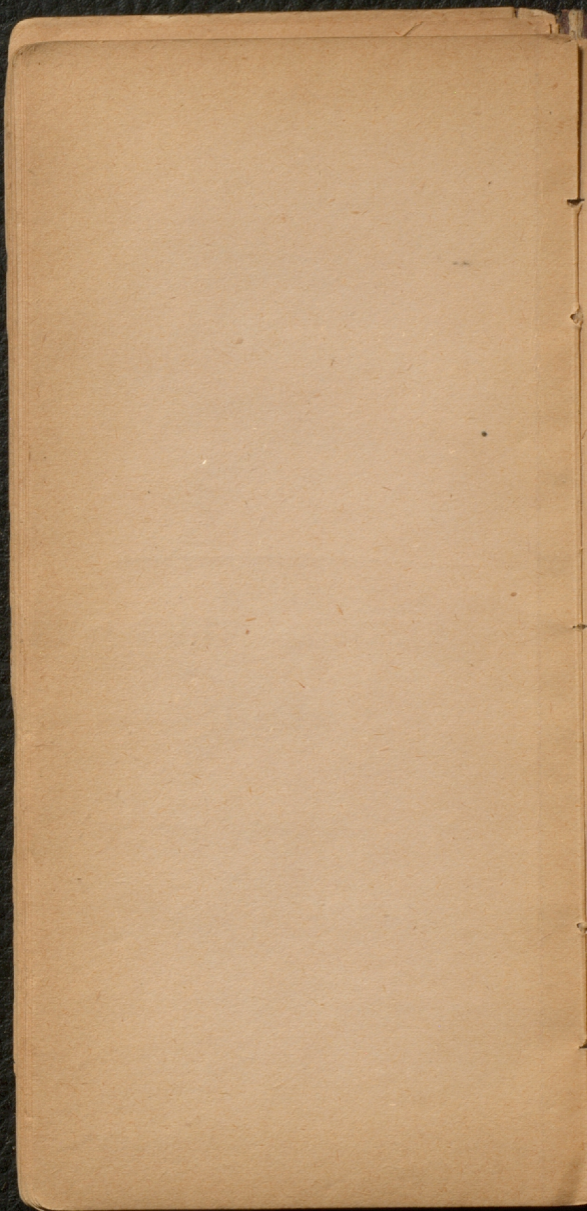
Gray Physalis
& Subulden
not well defined

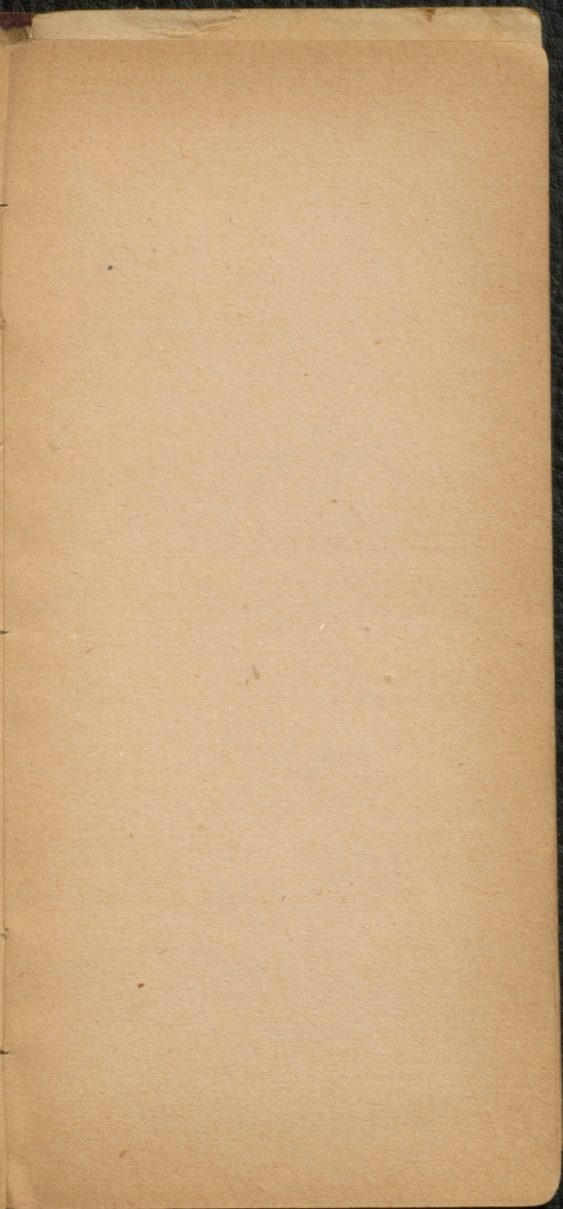
Subulden Anemone
Not the species

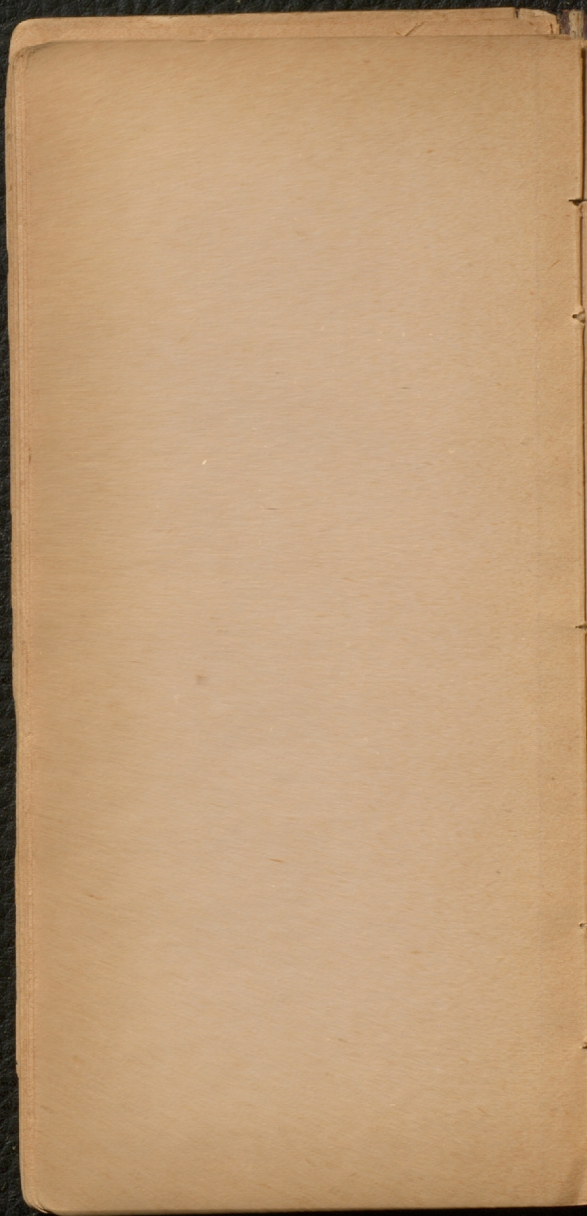
? of same cut
Anemone Physalis
of Fab which
usually suffers
blue P. auligosa

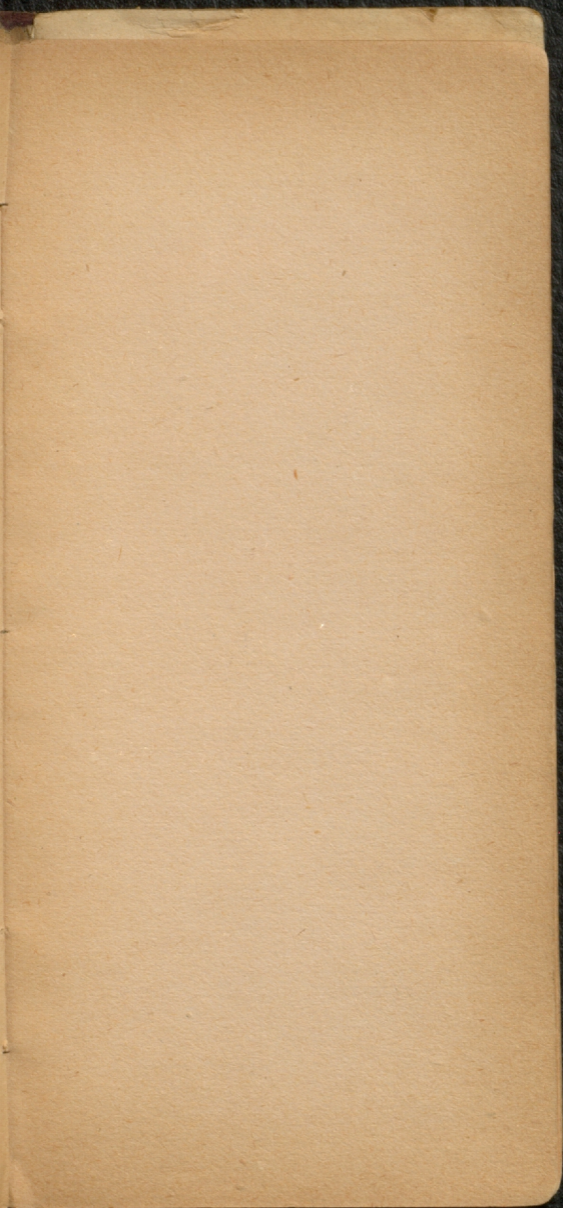


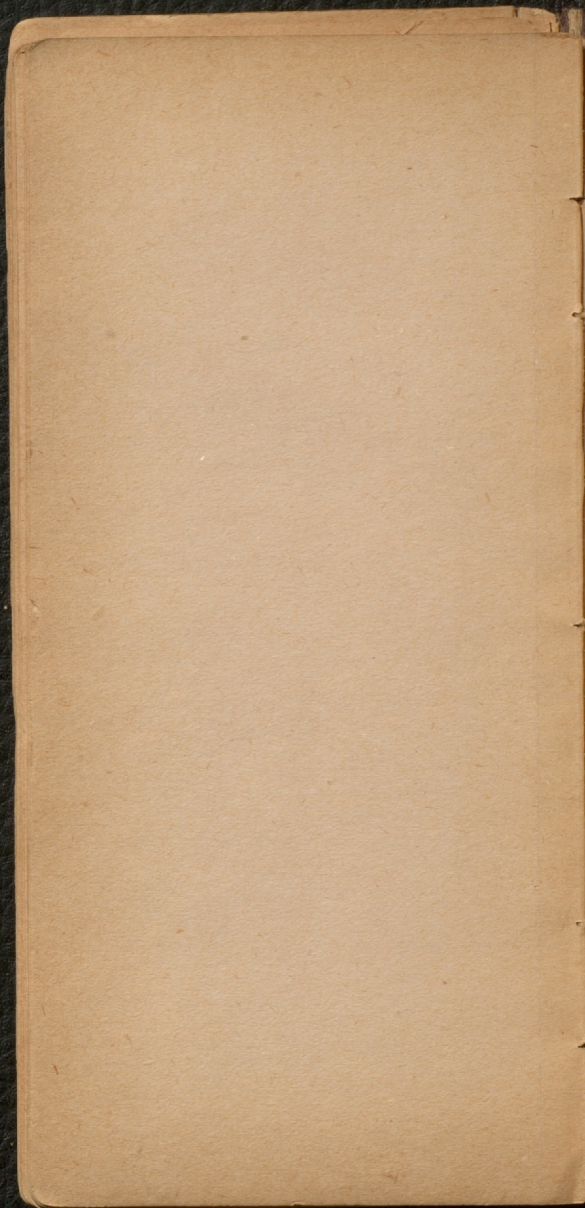


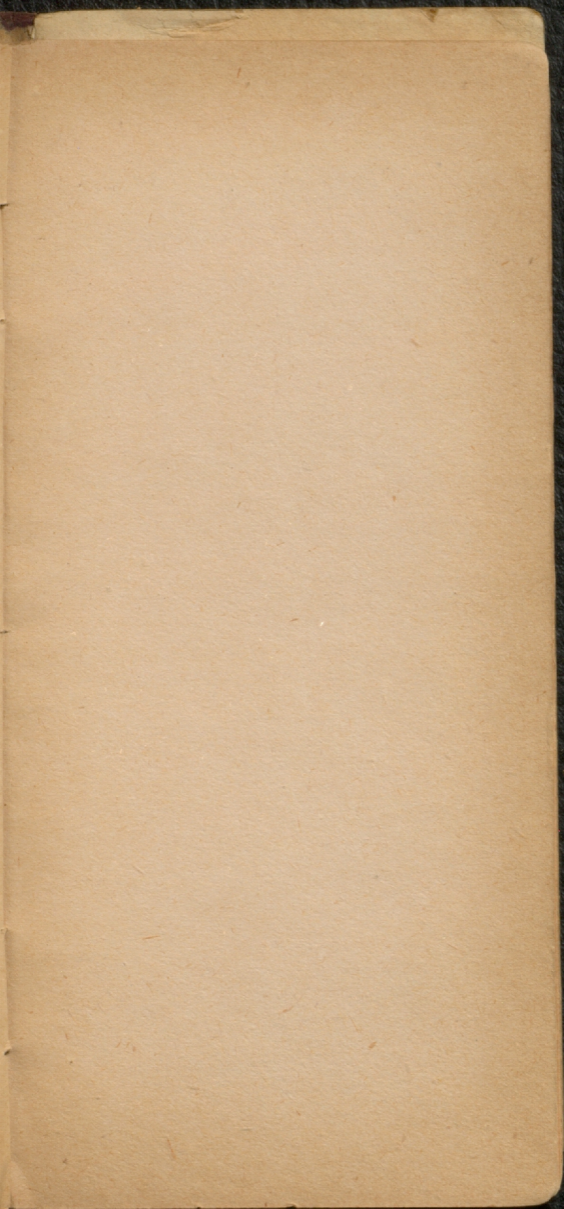


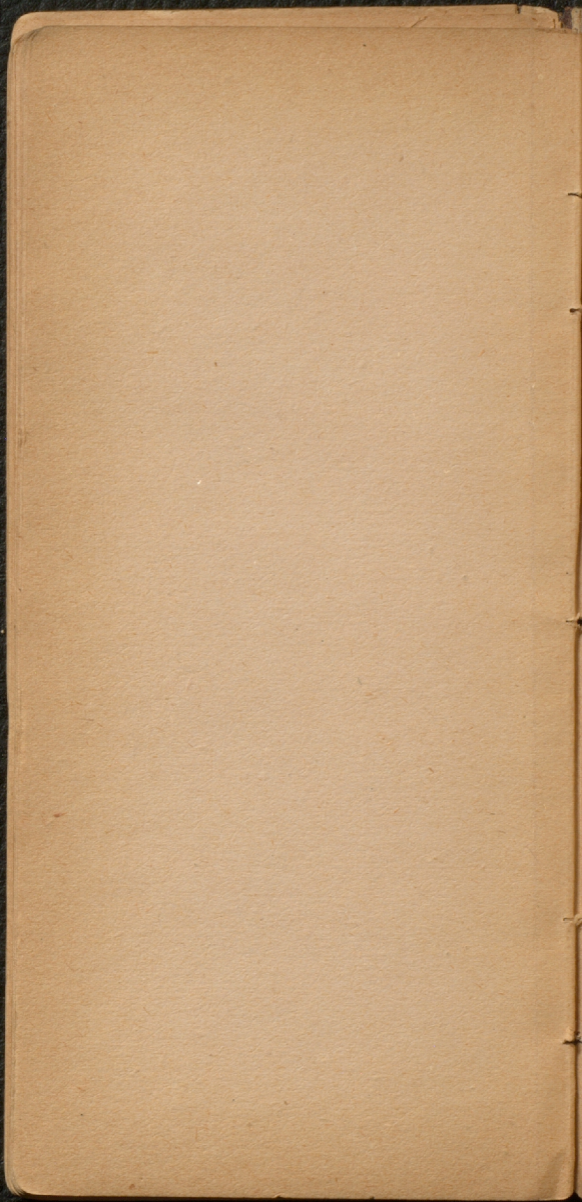


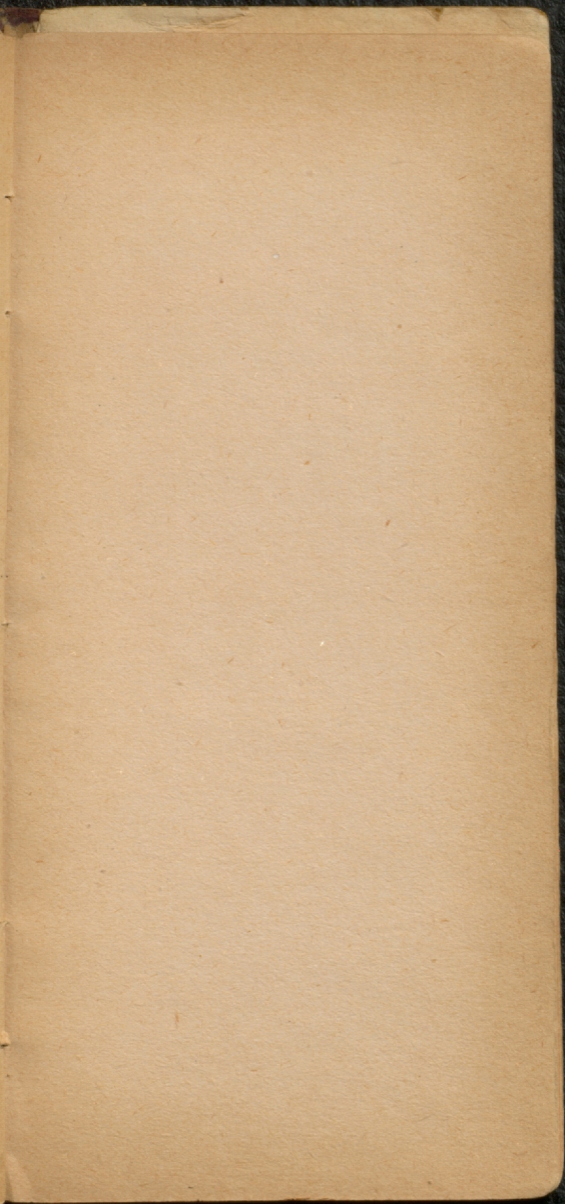


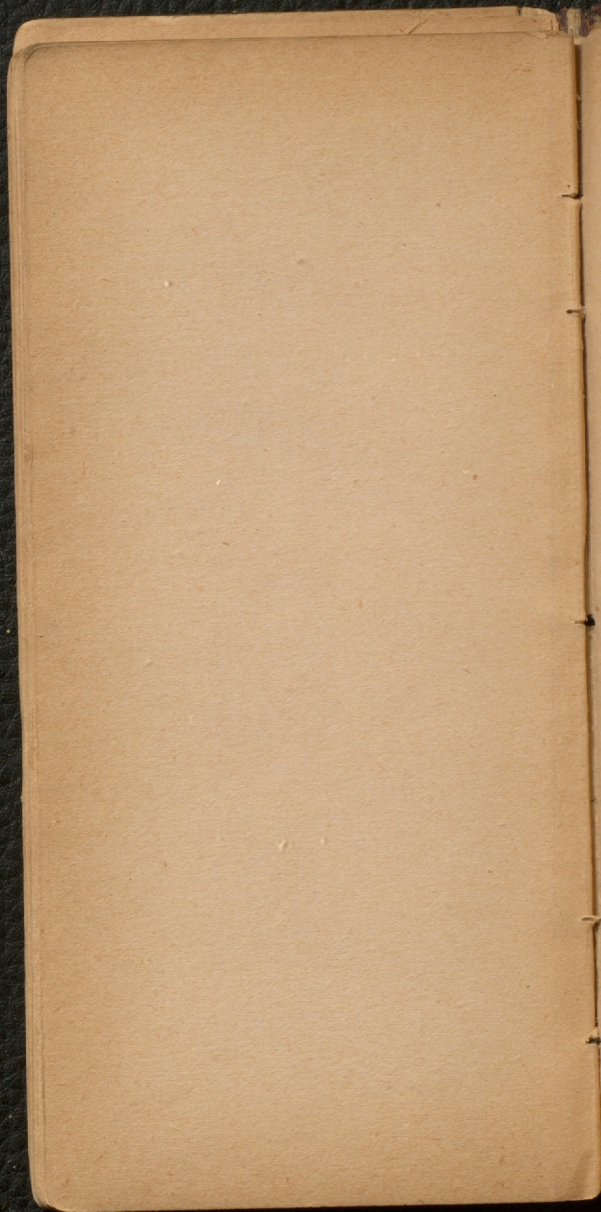


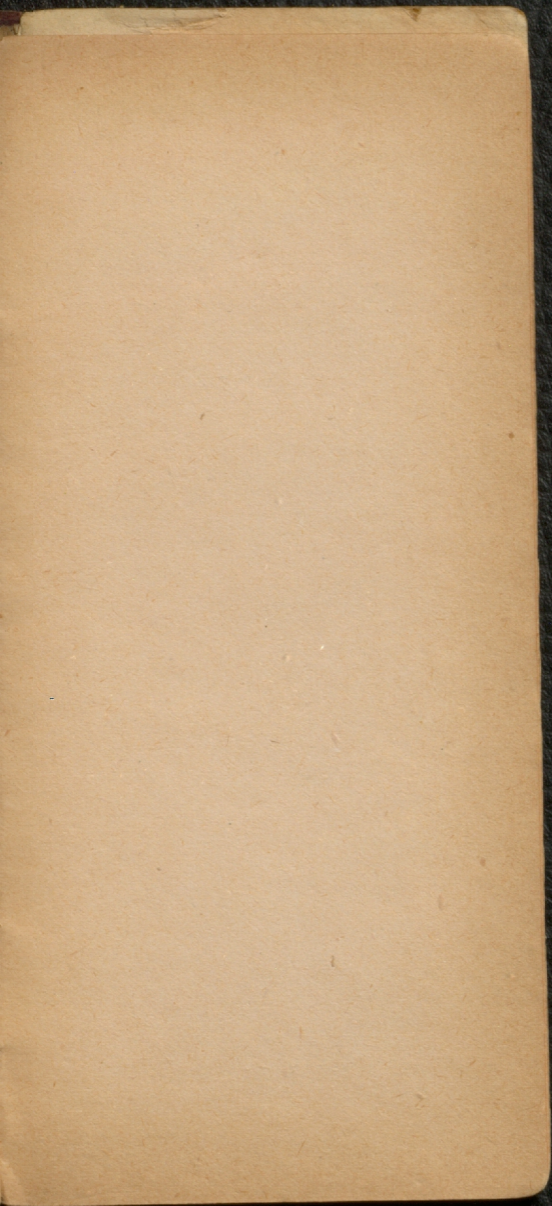


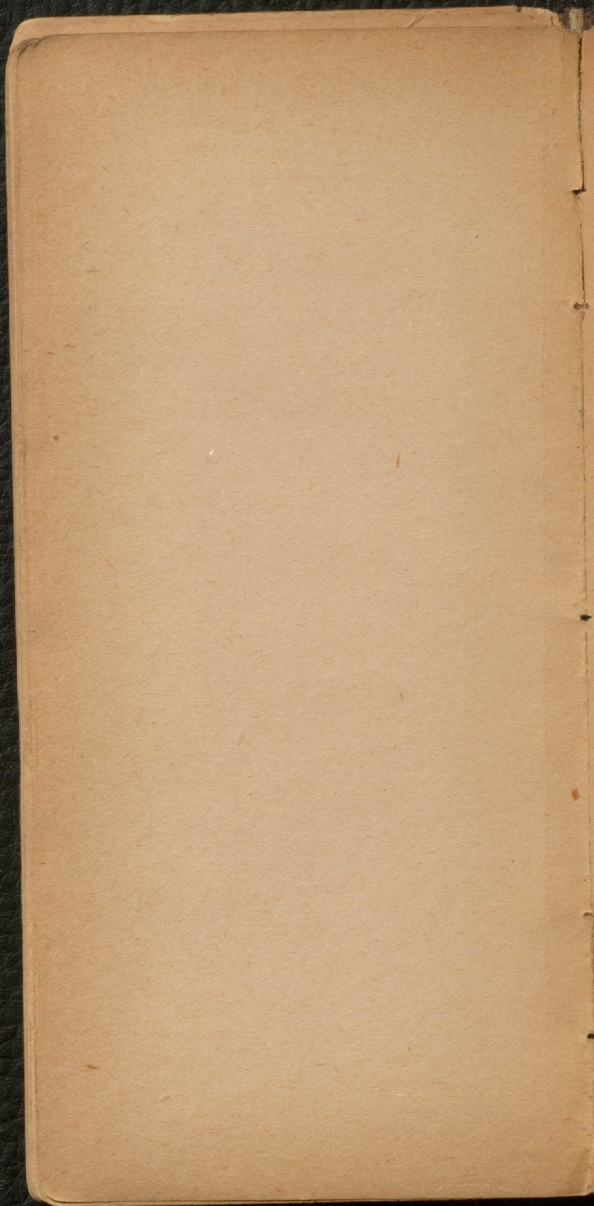


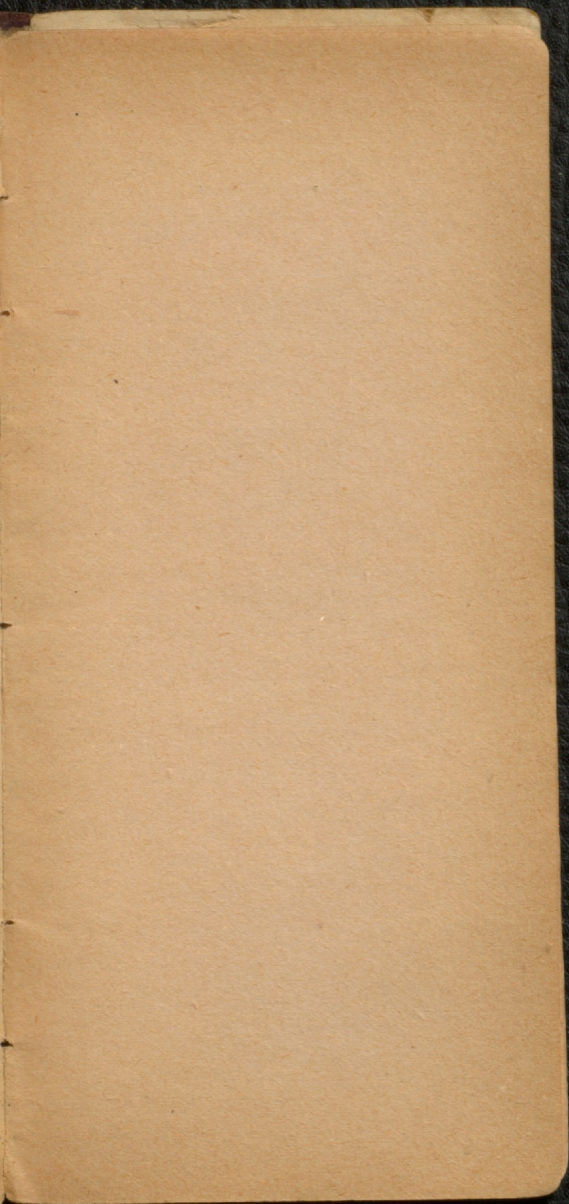


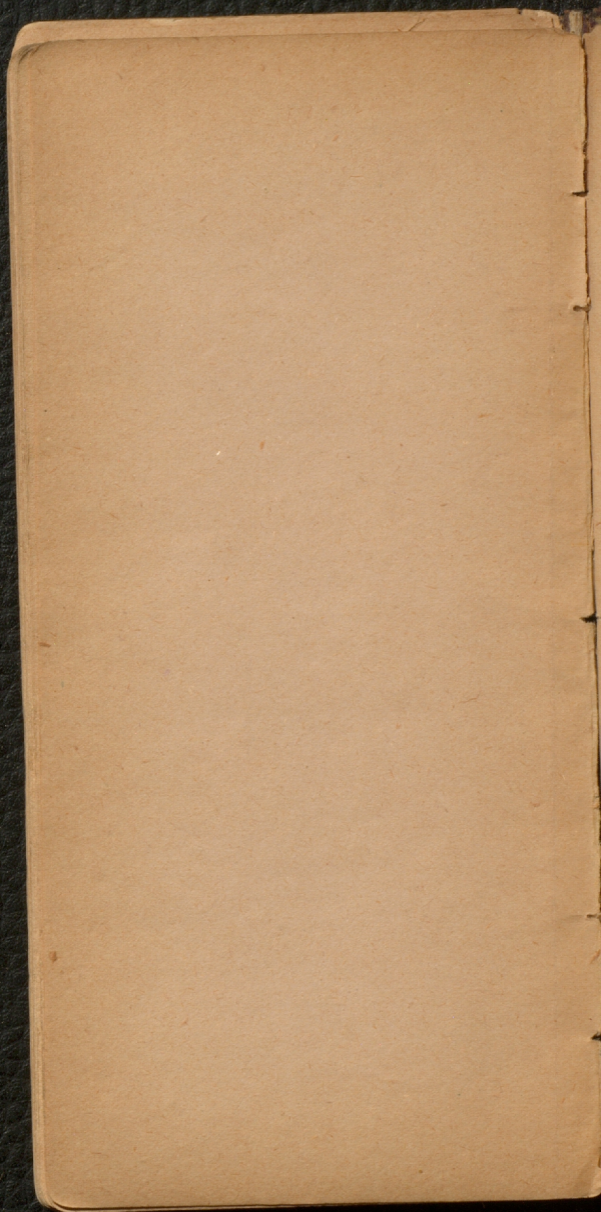


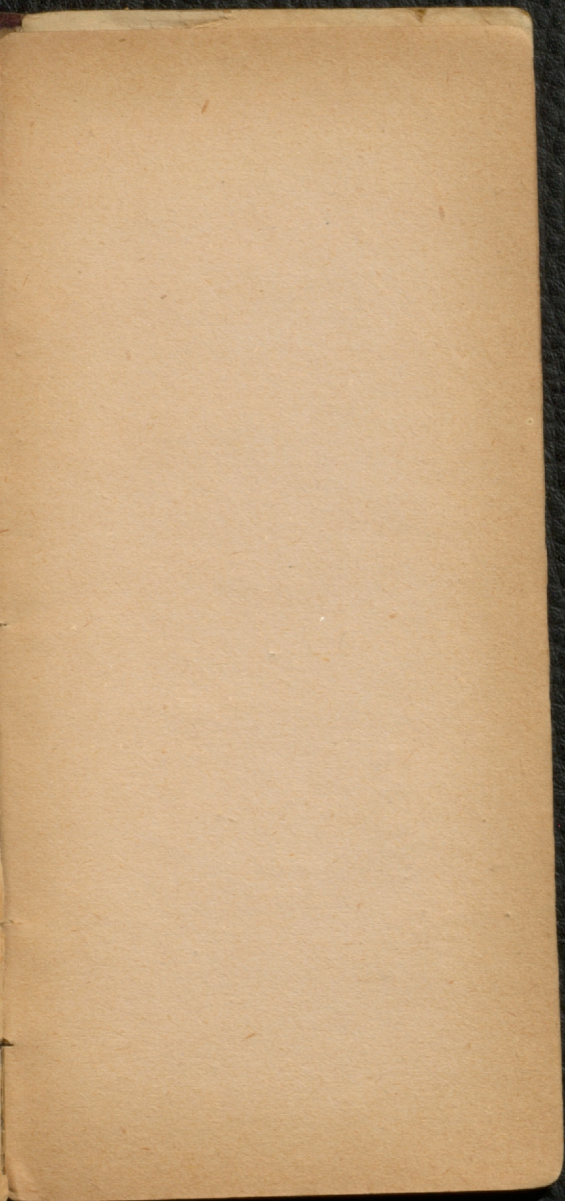


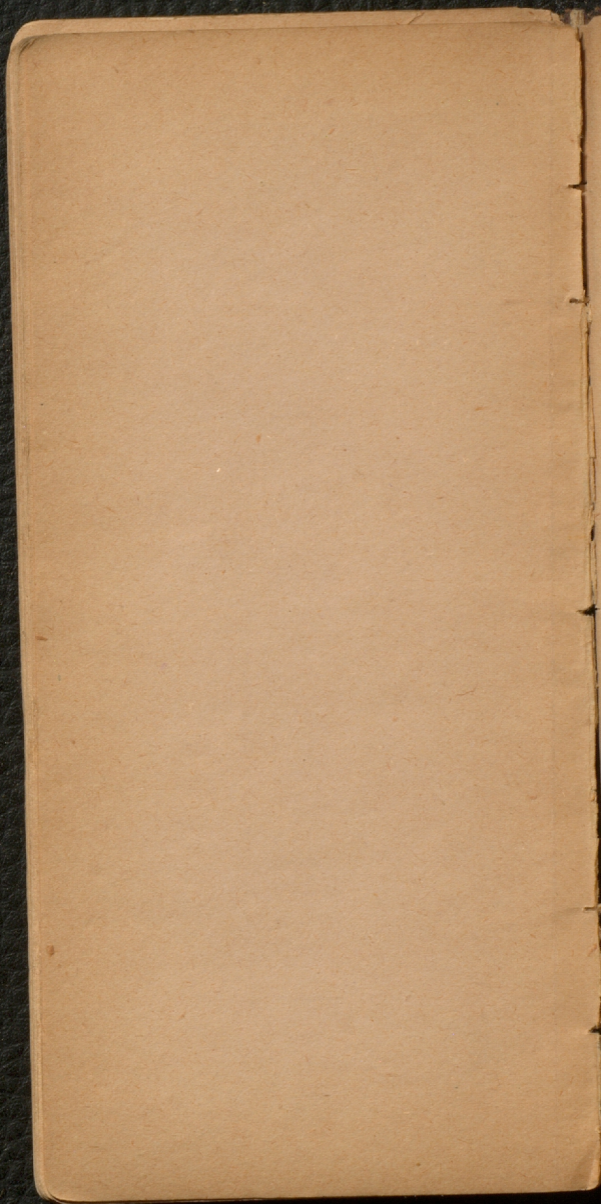


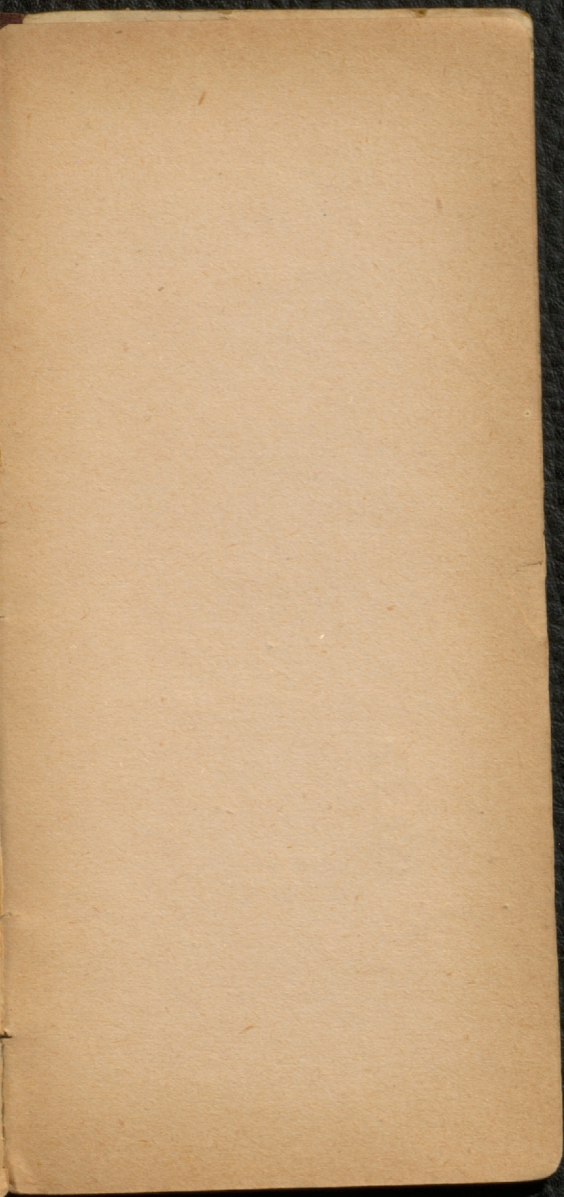












Letters

Field Notebook
Sent to Wash DC

Sept 22

1 ~~Sequest~~ Sequest Layer
pres no 1

2 Small piece no 2
inside

3 Sa sp no 3
inside

4 Do inside

5 Clashes bit
Main
inside bit

6 Repulse cone

7 Inside Layer
Seyd 9 ^{the} part



B

Handwritten cursive text, possibly a signature or name, written in dark ink on aged paper.

Large, stylized handwritten flourish or signature, consisting of several sweeping, interconnected loops.

Handwritten cursive text, possibly a signature or name, written in dark ink on aged paper.

John F. Johnson

Albany
Albany
Albany
Albany

Walter W. W. W.
W. W. W. W.

W. W. W.

