

MCGILL UNIVERSITY ARCHIVES	
ACC. NO.	909B
REF.	47

Catalogue of

Books, Maps, & Papers
bearing on the North Western part
of
British North America.

X = Have, or in Library
O = Have seen elsewhere & read.

1 Progress Report on the Canadian
Pacific Railway. Exploratory Survey.
Sandford Fleming. Ottawa Ap 10. 1872.

Gives account of preliminary survey
of route provisionally chosen. Maps.

2. Report on Assiniboine & Saskatchewan
Exploring expedition. Printed as an
appendix to the journal of the Legislative
assembly Canada. 1859.

Geological & general report by Hind, with
maps.

Topographical etc report - with maps by
S. J. Dawson.

3. Owen. Report on a Geological Survey
of Wisconsin, Iowa & Minnesota, & a
portion of Nebraska. 1852.

Geology. Paleontology. Maps & Figures.

X 4 Foster & Whitney. Report on geology
Lake Superior Land District.
Part I Copper Lands. 1850
Part II Iron Region & general geol. 1851

Has geol. maps. Some Palaeontology. &
many Landscapes. Said to describe Siberian
rocks like those of Manitoba.

F.V. Hayden. Notes explanatory
of Maps & Section of geological structure
of Country bordering ~~Missouri~~ Missouri
Proc. Acad. Nat. Sci. Phil. May 1857.

Is often referred to by Hind.
(Geol papers Vol. IV.)

8 Weeks & Hayden Geological Exploration
in Kansas Territory.

9. Went Hayden. Lower Cretaceous
beds of Kansas & Nebraska.
Am. Journ. Sci. p. 219. 1859.

10. Went Hayden. Remarks on
Tertiary & Cretaceous formations of
Nebraska etc etc.

11. Owen. Geol. Survey of Cheppeway
Lake District. 8^o 1852.

? if same as No 3.

describes mammalian & Chelonian remains
& Cretaceous fossils collected by Dr John
Seymour. at Mauvaise Terres. White R.
Great Bend. Fort Hills etc.

12. Papers by Ledy Evans. Shumner
on Mammalian etc remains
Missouri.

Proc. Acad. Nat. Sci. Phil.

Acad. Nat. Sci. St. Louis.

13. Hall Shuck. In Trans.
acad. arts & sci. Boston, 1853.

Sections. Lists Molluscs from
Cretaceous & Tertiary. Difference between
fauna of Cretaceous of New Mexico &
Texas, & Northern fauna; pointed out
for first time.

Paper by Hall read before Am. Ass.
Adv. Sci. Providence meeting, also
gives results.

14. Hayden Leidy etc Series papers
in Proc. Acad. Nat. Sci. Phil. Vol VIII.

15. Sir J. Richardson. Journal of a
boat-Voyage through Reperto Land.
1851. 8^{vo}. Longmans Brown Green & Longmans
London. Also an American Edition.
Contains an appendix on Phys Geog & Geol.
Also much useful general observation on
Botany. Nat-Hist. Geology & Geography.

16 Sir J. Richardson Appendix, Geological
& Topographical to Franklands Second
Overland Journey. 1825-26-27.
Details of arctic tertiary coals etc.
Meteorological obs. etc.

17. S. J. Dawson Maps of N.W.
pub. in 1868 by Government.

18. Sir Alex Mackenzie Voyages through
N. America to Arctic & Pacific oceans.
An English edition 4^{to}. & an American
reprint 8^{vo} 1802.

Good account of Indians. Some useful
General observations.

x 19 Hector. On Geol. Country between
L. Superior & Pacific. Visited by the Gov.
Expedition under Capt. Palliser. 1857-60
Quart. Journ. Geol. Soc. 1861. Vol. XVII

Best general account of geology.

20. W. H. Keating & May Long
Narrative of an expedition to the sources
of the St Peter River, Lake Winnipeg
Lake of the Woods etc. in 1823. 8^{vo} 2 Vols.
London 1825.

Much information as to manners &
customs of indian tribes. Geol. Notes.
Topographical Report. Appendix with
account of geology & Botany of Expedition.

21 Francklin's Journey to the Polar
Sea.

X

22 Preliminary Report of U. S.
Geol. Survey of Montana, Portions
of Adjacent Territories. F. V. Hayden
1872.

X 23. Prelim Report. U. S. Geol. Survey
Wyoming. F. V. Hayden. 1871

x 24. F. V. Hayden. Geol. Report of
exploration of Yellowstone Missouri.
1859-60.

Large Useful maps. Many Tertiary
sections. Best account of Western Tertiary
& Cretaceous.

x 25. Alex J. Russell C.E. Hudsons
Bay & N. W. Territories in Relation to
Canada. Montreal 1870.
descriptive.

- X 26 Sir J. Simpson. Peace R.
a Canoe voyage from Hudson Bay to
Pacific in 1828. Ottawa. 1872.
- X 27 Mappe Tachi Sketch of the N.W.
of America. Translation by Capt-
Cameron. Montreal 1870
Summary of Fauna &c
- X 28 Dr J. J. Bigsby. On the Geology of
the Lake of the Woods. South Hudsons Bay.
Quart. Journ. Geol. Soc. 1852. Vol VIII.
Map.

x 29. Dr J. J. Reesby. on the Erratics
of Canada. Trans. Journ. Geol. Soc. 1851. Vol VII.
Gives in addition to Canada proper
some details of drift & erratics in
Lake of the Woods & Rain Lake.

x 30. F. B. Meek. Remarks on Carb. & ✓
Cret. rocks of E. Kansas & Nebraska
& their relations to those in other
states & localities. (Geol papers Vol XIV)

x 31. Lesquereux on the origin & formation
of prairies. Amer. Journ. Sci. & Arts
Vol XXXIX. (Geol papers. Vol XIII)

x 32. Winchell. On the origin of the
Prairies of the Valley of the Mississippi
Am. Journ. Sci. & Arts. Vol XXXVIII
(Geol papers Vol II)

x 33 Newberry. Notes. Surface geology
basin Great Lakes. (Geol. papers Vol X.)

x 34 Hayden Remarks on period
Elevation Rocky Mts. near sources
Missouri & Tributaries.
Am. Journ. Sci. Vol XXXIII
(Geol papers ~~X~~.)

x 35 Abstract Report of Explorations
& Surveys for a Pacific Railroad.
Under Direction Jefferson Davis
(Geol papers 7)

x 36. Jules Marcou. Notes sur
Montagnes Rocheuses.
(Geol Papers Vol V)

x 37 Wm Hayden. Descriptions ✓
of New Species & Genera of Fossils
in Nebraska Territory.
Contains Remarks on Tertiary &
Cretaceous of Nebraska & parallelism
with those of other portions of U.S.
(Geol Papers Vol IV)

x 38. Shumard & Swallow,
Descriptions of New fossils from
Coal formation of Missouri & Kansas,
List & Descriptions.
Trans. Acad. Sci. St. Louis.
(Geol Papers Vol V.)

x 39. West & Hayden Permian
fossils from N.E. Kansas.
Trans. Albany Institute.
(Geol Papers Vol V.)

x 40 Hayden Explanations of a
second ~~copy~~ edition of a geological
map of Nebraska & Kansas.
Proc. Acad. Nat. Sci. Phil. 1858.
(Geol Papers Vol V) map of geology.

x 41 WEEKS & HAYDEN. Description of
New organic remains from
Nebraska. 1858.
(Geol Papers Vol II)

x 42. LESQUEREUX. On species of
fossil plants from the ~~tertiary~~
Tertiary of Mississippi.
(Geology 8^e 4to. J.W.D. 1868)

x 43. CAPPELLINI & HERZ. Les
Phyllites Crétacées du Nebraska.
Geology 8^e 4to. J.W.D. 1868.

24 Charles Whittlesey.
Fresh Water glacial Drift of
N. Western States.
(Geology 5^c 4 to J.W.D. 1868)

25 White. Geology of Iowa.
1870. 4 to 2 Vols.
(Maps & descriptions of Western
Silurian & Carboniferous.)

26. Hall. Report on Geol.
Survey of Iowa. 1858. 4 to 2 Vols.
(Palaeont. 5 good figures).

x
47. Hall & Whitney. Report on
Geol. Survey of Wisconsin. 1862
4to
(accounts occurrence of Lead).

x
48. Newberry. Surface geology
Valley Great Lakes & Mississippi.
(Post-pliocene & vo. J.W.D.)

49. Eng. Hilgard. Quaternary
formations State Mississippi.
(Post-pliocene & vo J.W.D.)

x 50 N. H. Winchell. First
annual report on geology &
Nat Hist Minnesota. 1872.

x 51. J. S. Newberry. Notes on
Later extinct floras of N. America

a Resume of Cretaceous & Tertiary
floras with descriptions of New
species.

52. x J. S. Newberry Descriptions of
fossil plants collected by him
Geo L. Gibbs. Geol. to U.S. N.B.C.
(Vancouver Isd & E)

53. Meek & Hayden

x Palaeontology of Upper Missouri
Lto. (Smithsonian Contributions)
(part I Silurian to Jurassic)

x 54. L.B. Meek 1868.

Sketch Geology & Palaeontology
of Valley of Mackenzie R.
Summary of Geology. Description
Devonian & Silurian Fossils.

x 55. A.K. Leister Geology of
Hudson Bay Territories & E.
Proc. Geol. Soc. Vol. XI.

Maps #22.

Full bibliography up to list time.
List of Arctic Silurian fossils.

Cope
x 56 Families of fishes of the
Cretaceous formation of Kansas.
(Descriptions of remains & list).

x 57. Macfarlane. Coal Regions
of America. 1873.
Accounts of Lignite of West
& on U.S. R.R. &c. Analyses. &c.

58. Hague & King. Mining
industry of Dartmouth parallel.
1870. (College Library)
Green R. lignite basin & views
of track on fossils from.
Analyses of lignites &c.

59. Dana. Treelessness of prairie
Country. Vol 40. p 393.

X 60. Hayden Geol Survey of Territories
1867-68-69. One Vol.

x 61 Hayden Geol. Surv. of
Wyoming & contiguous territory
1870.

Hayden on geology

Arns Thomas on agriculture

Musk on Palaeontology & new species

Hodge on Tertiary Coals with
Analysis &c

Numberly on ancient lakes

Ledy on vertebrates

Lesquereux on Tert. & Tert. flora.

their relations &c p. 370.

Cope on Reptiles & fishes. Catalogues of
recent fauna & flora.

x 62 Hayden Geol. Surv. Mountain
& contiguous territory 1871,

Hayden geol. report.

Thomas agricultural resources.

Lesquereux. Flora fossil.

Cope Cretaceous fauna of Kansas.

Musk list of fossils &c

Zoology & Botany.

x 63 Hayden Geol Survey Montana
Idaho Wyoming & Utah 1872.

Report Z.V. Hayden geology.

Lepidoptera of Idaho. Leconte.

Meek. Palaeontological report.

Cope. Extinct Vertebrata of Wyoming.

Indian remains Wyoming & Dakota.
Short notice.

Reports on mammals birds & insects
inhabiting Salt Lake.

Thomas. Physical & Agricultural
resources of Minnesota Dakota
Nebraska &c.

x 64 Henry Jaquet Meteorological
observations in Utah, Idaho, &
Montana 1872.

x 65. Hughes Journal Dept of Interior
List of Elevations West of
Mississippi R.

A collection of Railway &
other Crossings -

66 x. Joseph Leidy Contributions
to extinct vertebrate fauna of
Western Territories. 1843.

Dept. of Interior. 45 with
many plates Cretaceous &
Tertiary.

* 67. Alerididae of N. America
Cyano Thomas. 4to. Dept. of
Interior. Many descriptions
but few plates.

68. Check lists invertebrate fossils
of American Eocene Miocene
Cretaceous & Jurassic by Conrad &
Week. Smithsonian Miscellaneous
collections Vol VII 1867.

69. U. S. Geol. Surv. 40° parallel
Botany.

70. Richardson Geol. Journ. Geol.

See. Vol. III. p 212.

Points out general distribution
of lakes &c.

~~71. U. S. Geol. Surv. 40° parallel
Mining Inducter.~~

X

72. Newberry Rep. on Cret & Tert-
plants. Yellowstone & Missouri Exp.
Americana Reports. J.W.S. & in
End of Yellowstone & Missouri pamphlet.

X 72. Newberry plant beds of western
America. April 1874. Am. Journ. Sci & Arts.
Western Geology. J.W.S.

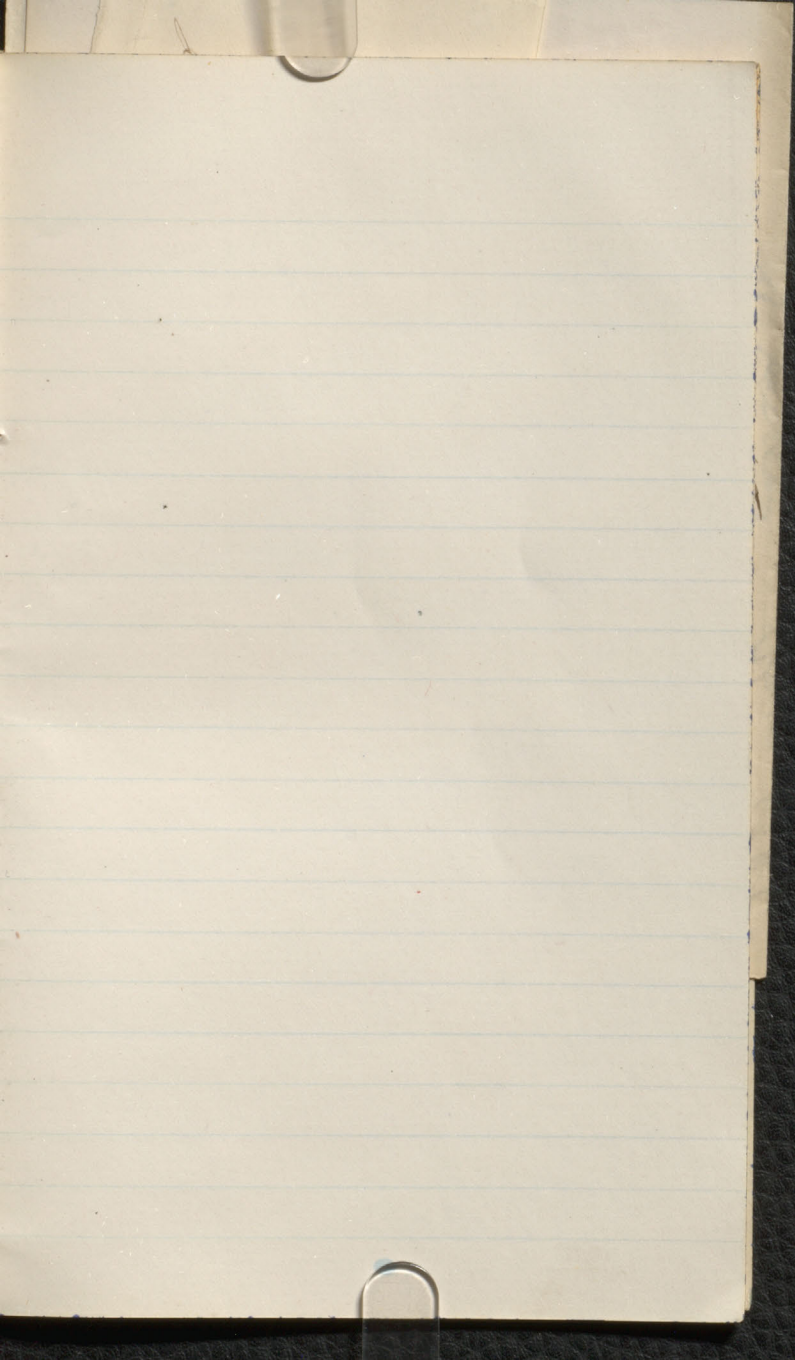
73. Age Lignite formations of Rocky Mts.
Esquerra Am. Journ. Sci & Arts 1874.

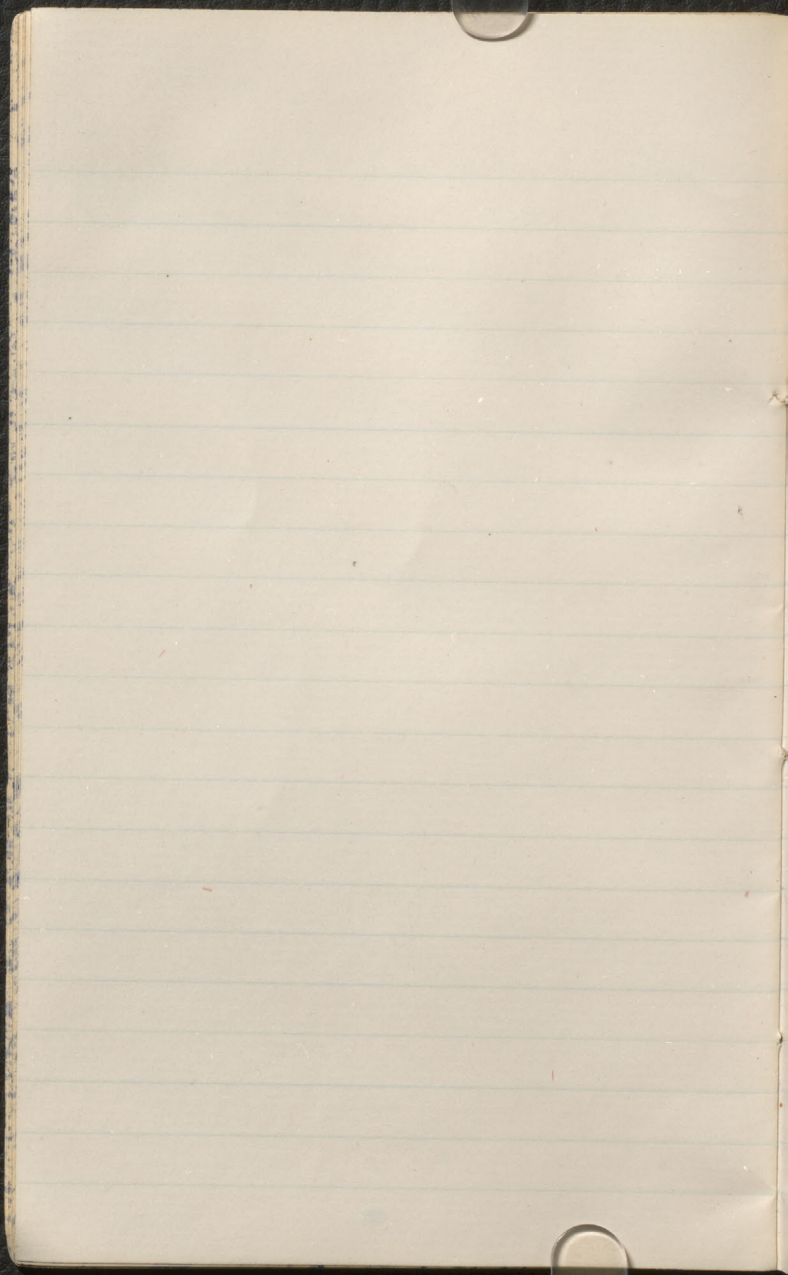
74.

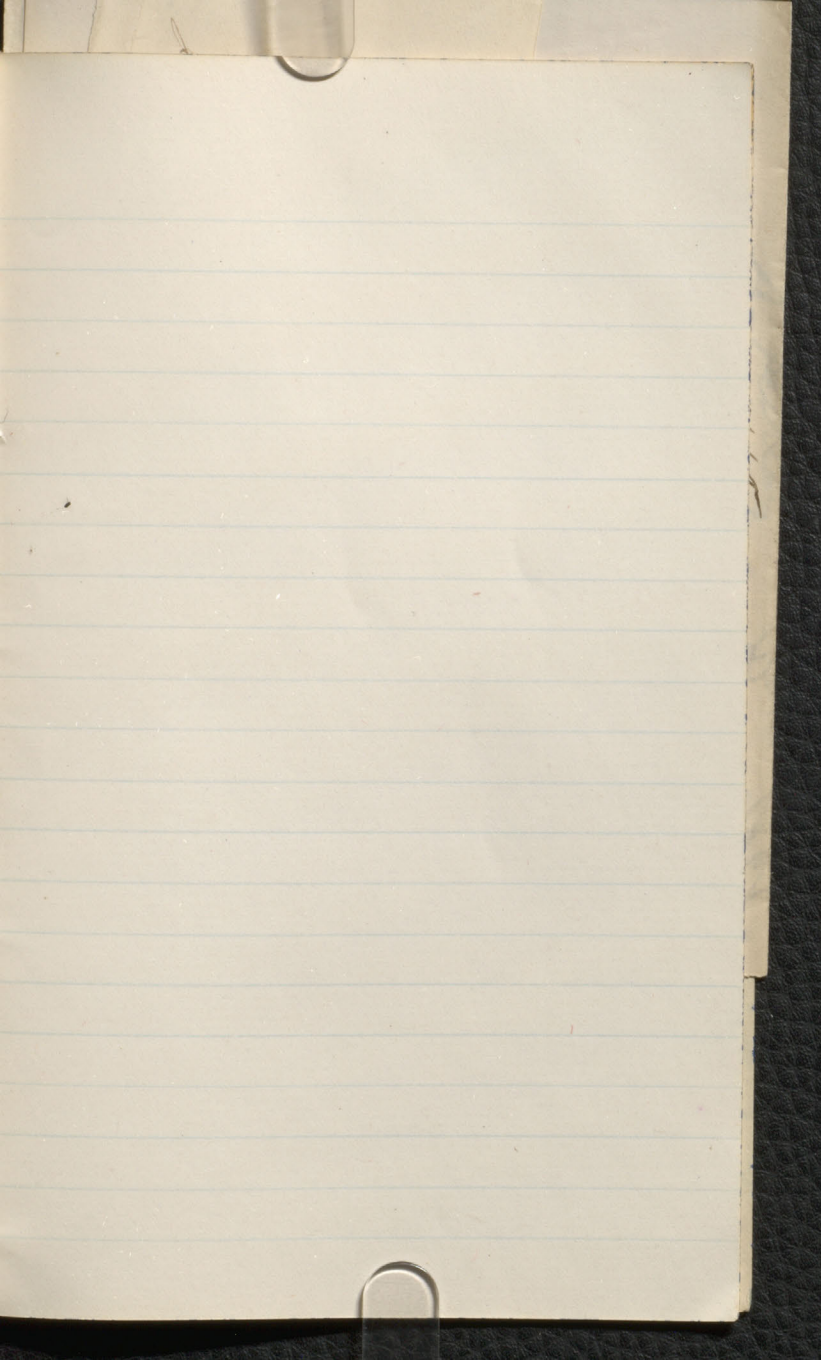
✓ Wreckell Second annual Report
on Minnesota Geology &c.

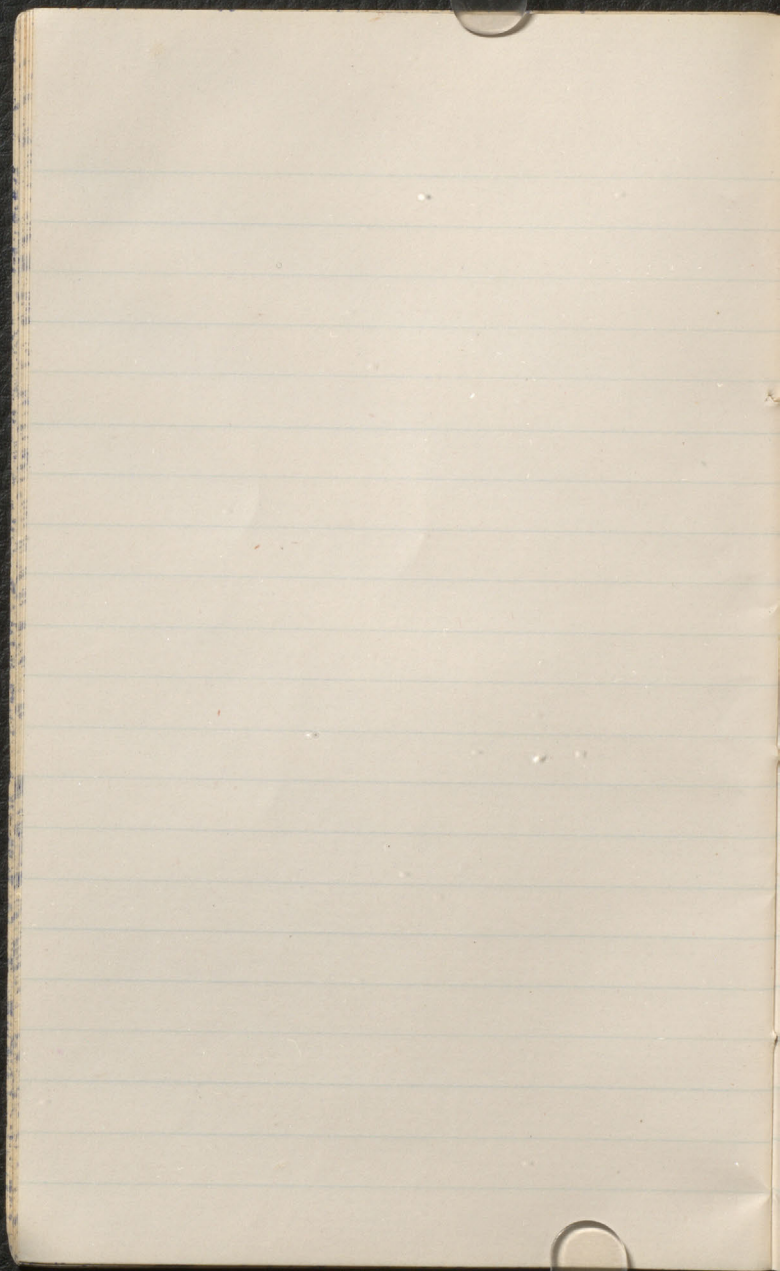
1. *[Faint, illegible handwriting]*

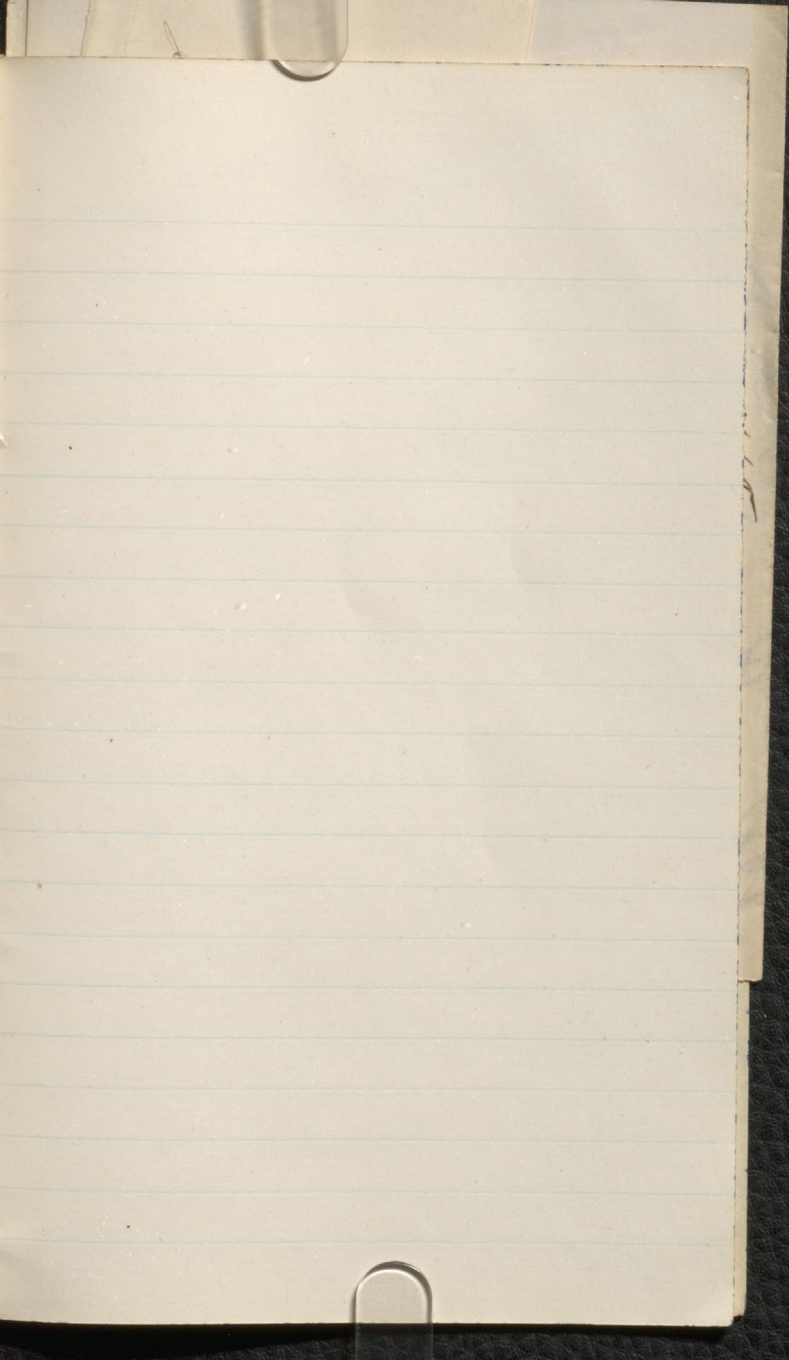
24. Wanted second annual Report
on University of Wisconsin

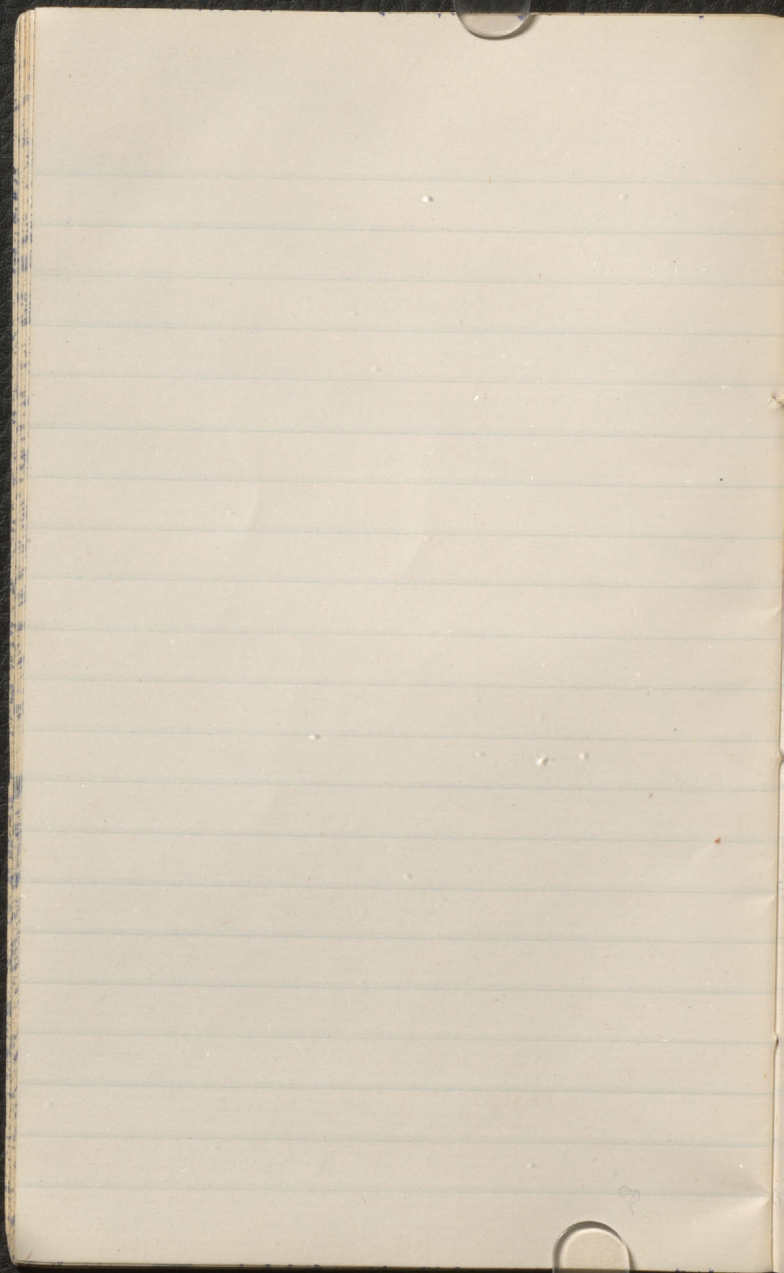


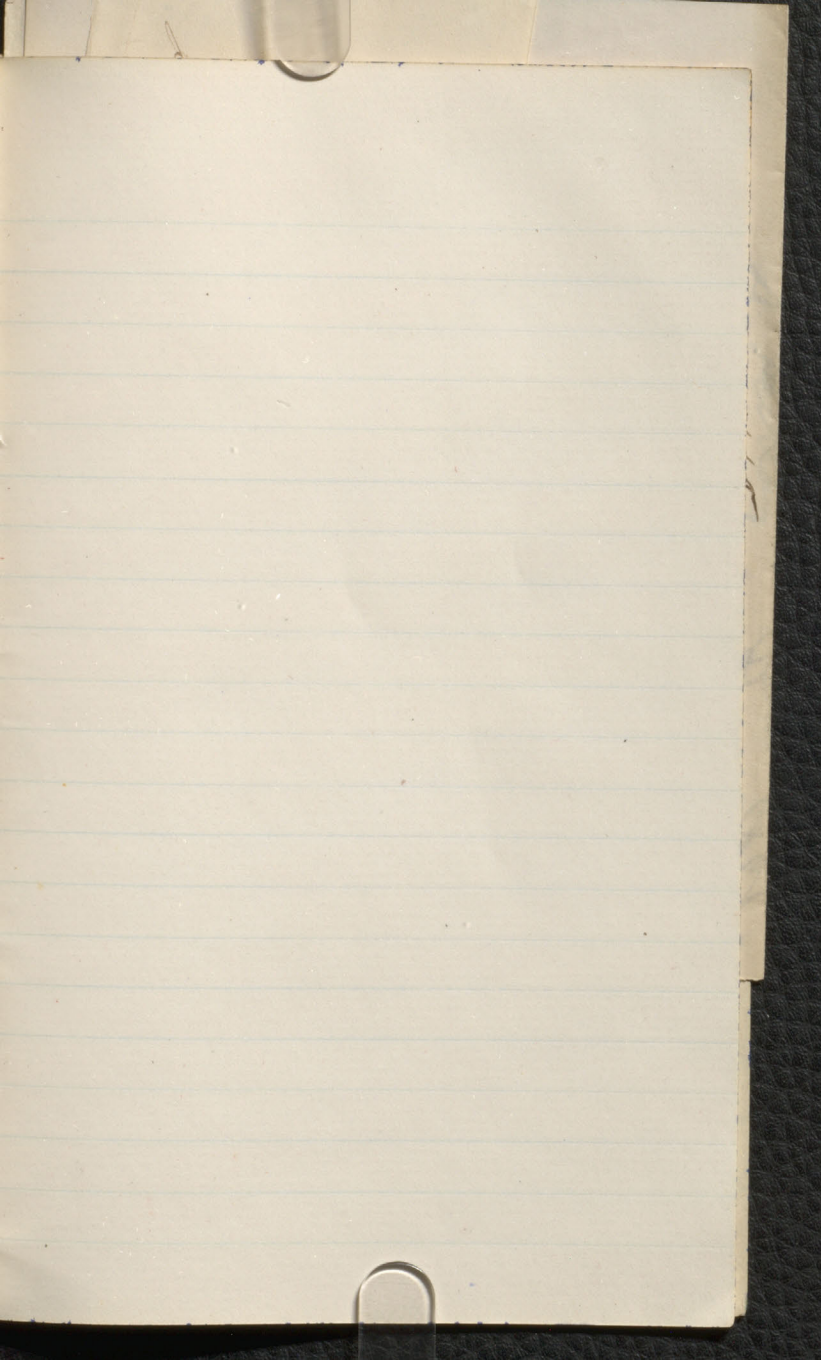


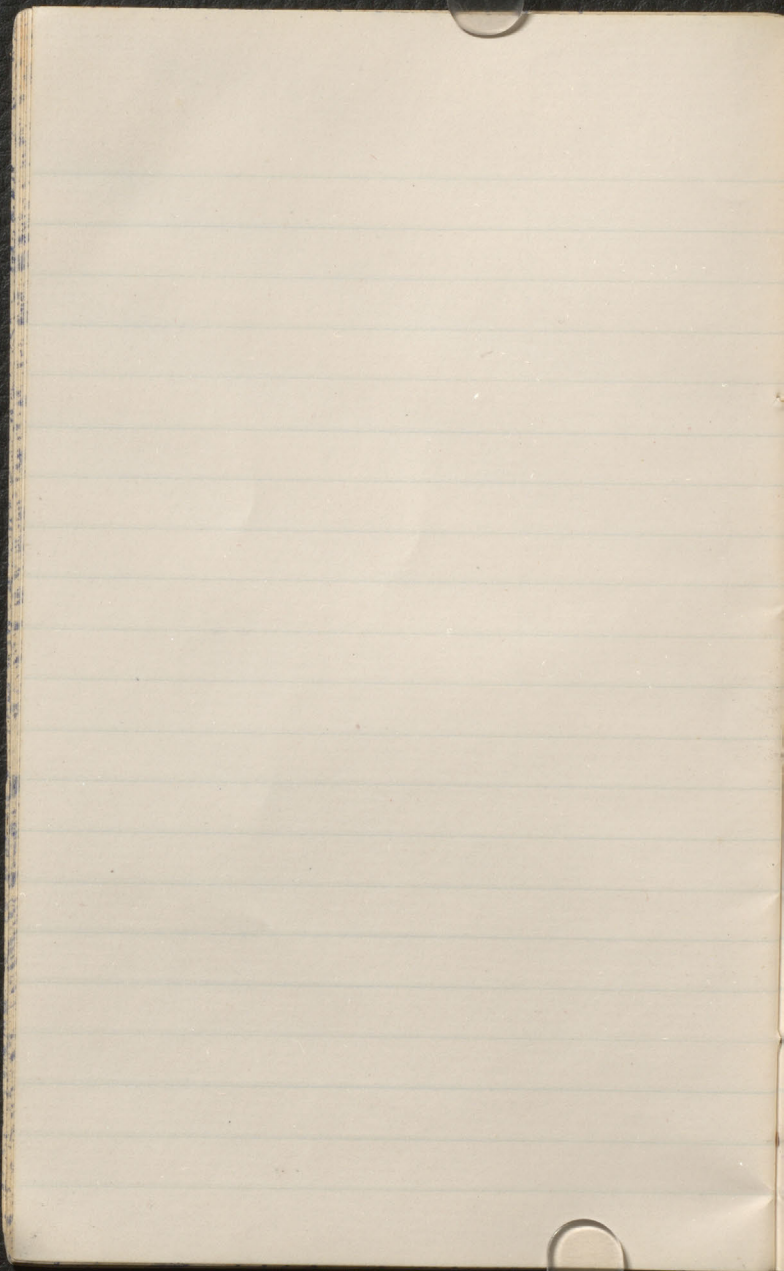


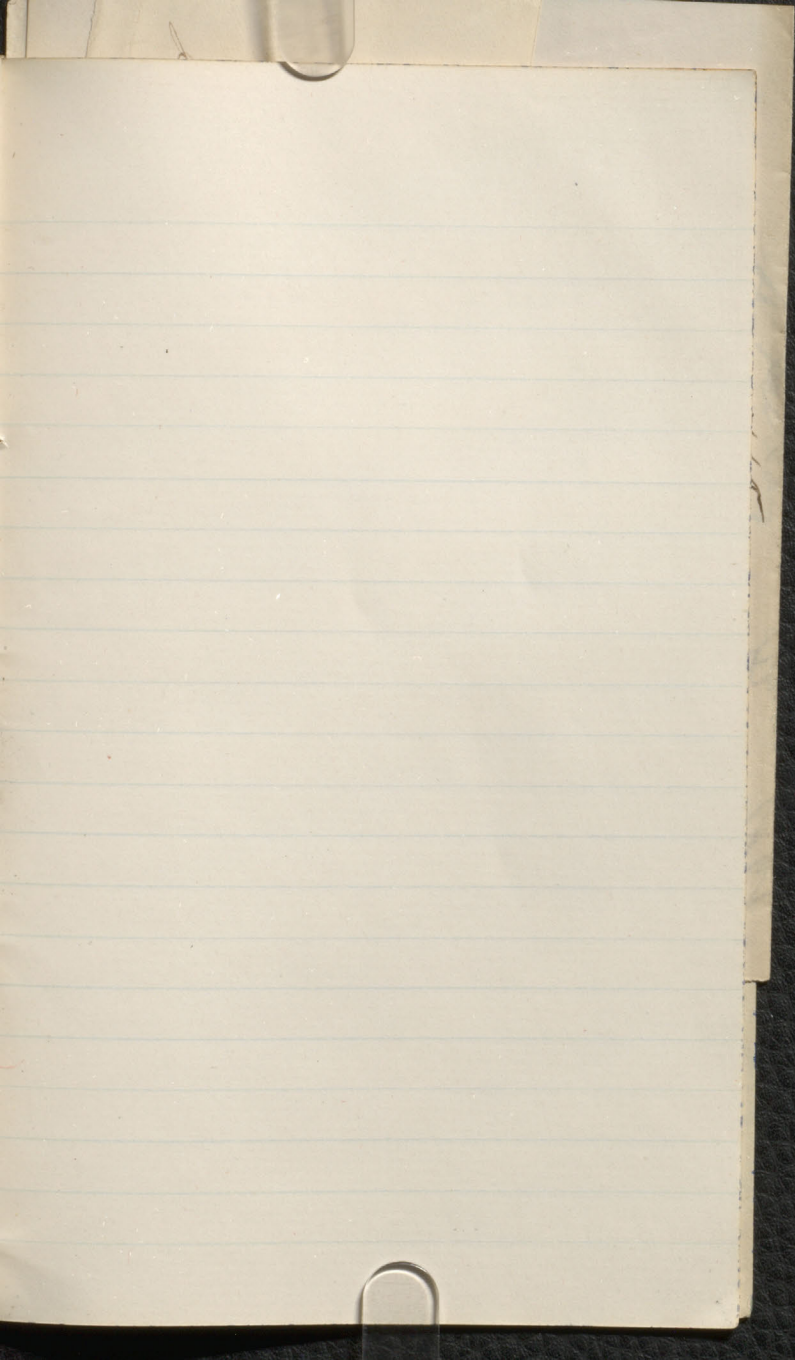


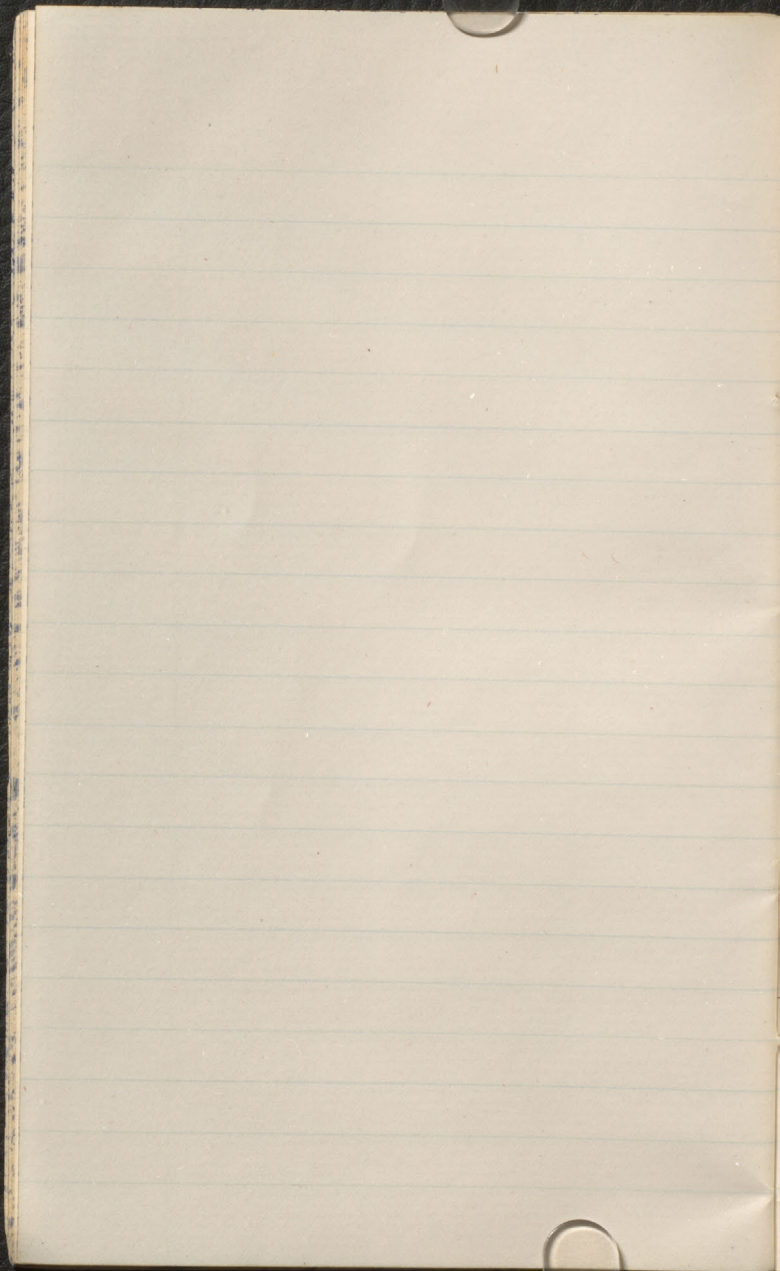


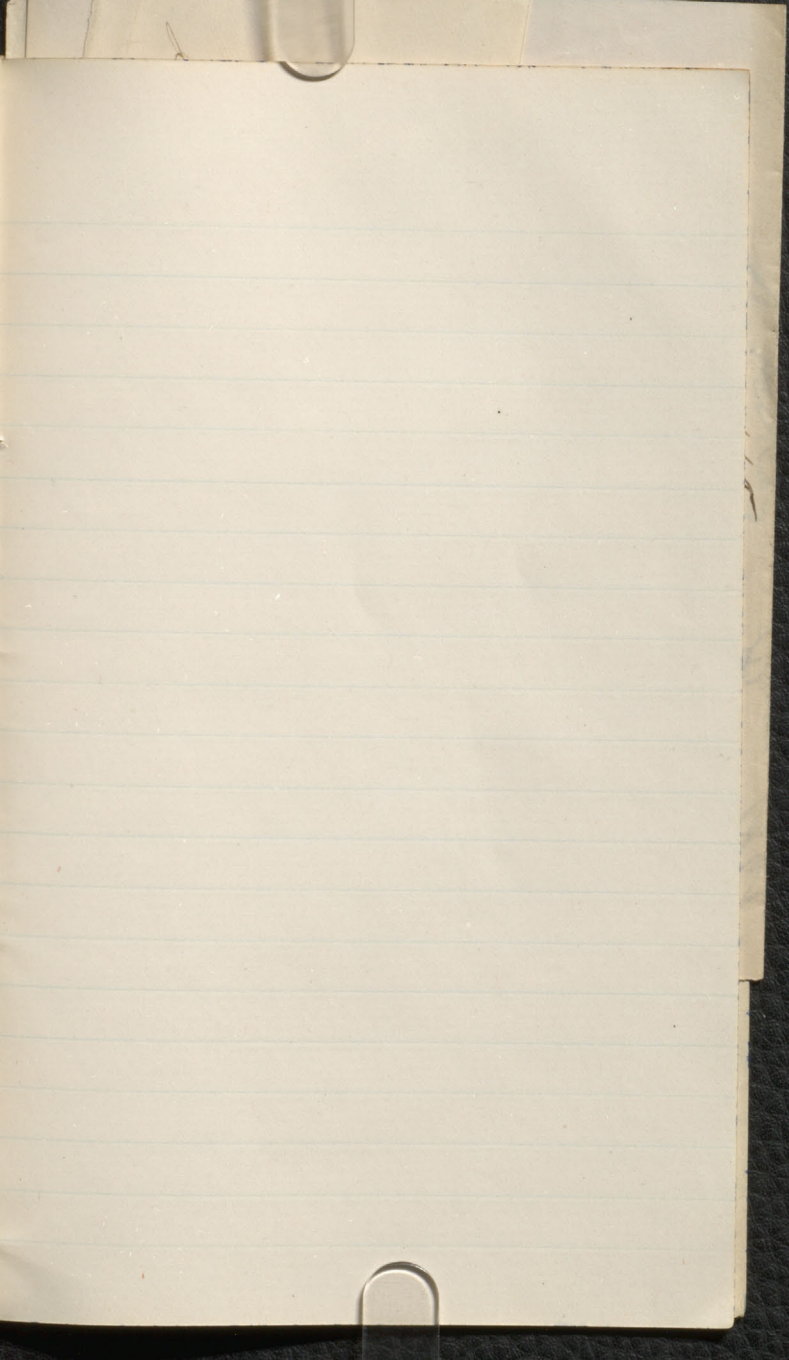


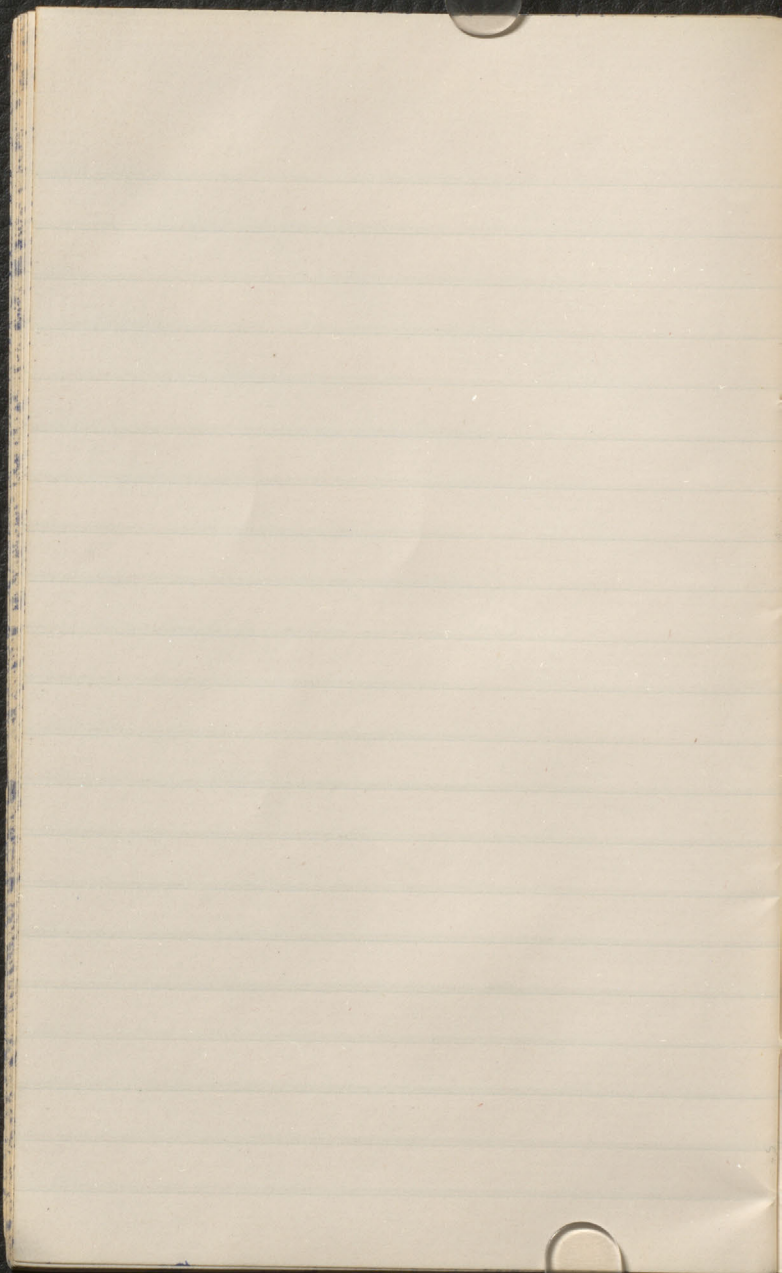


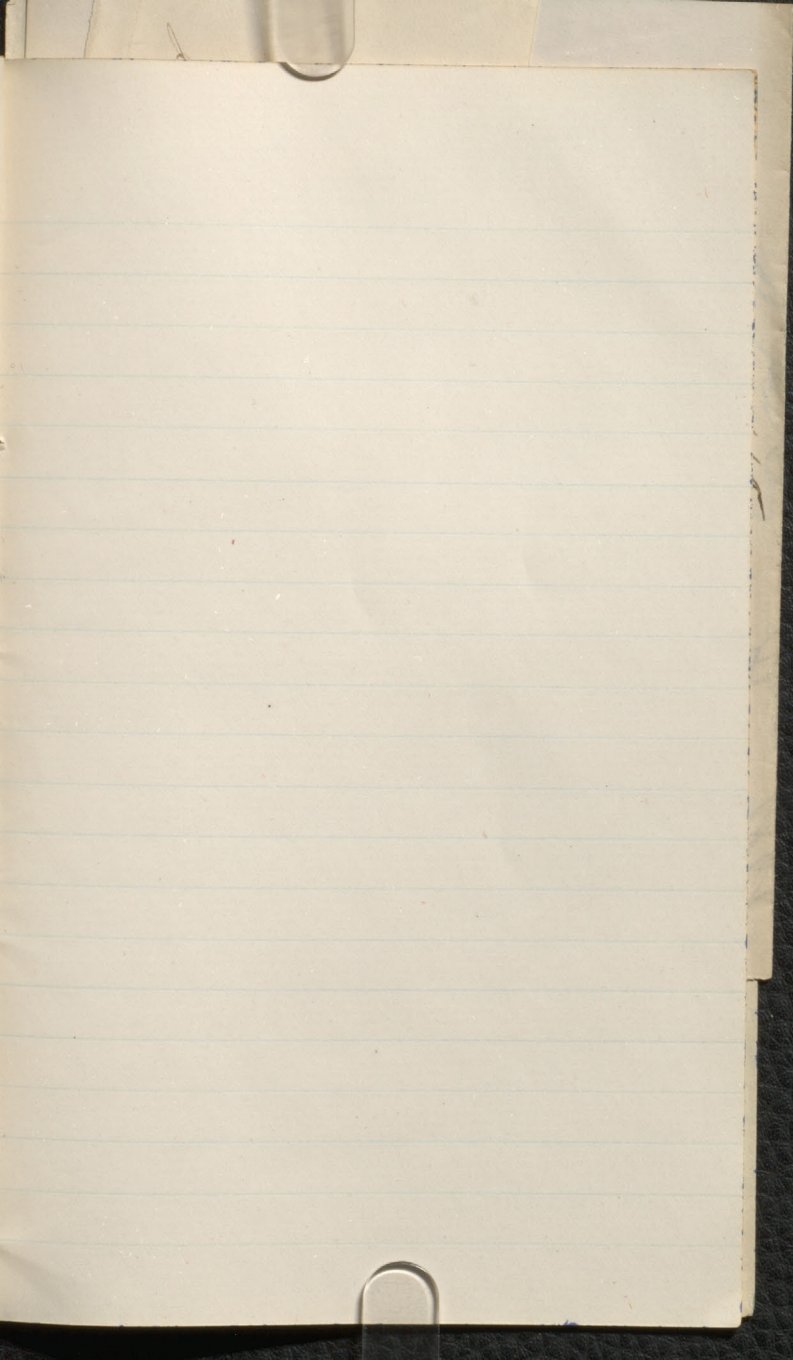


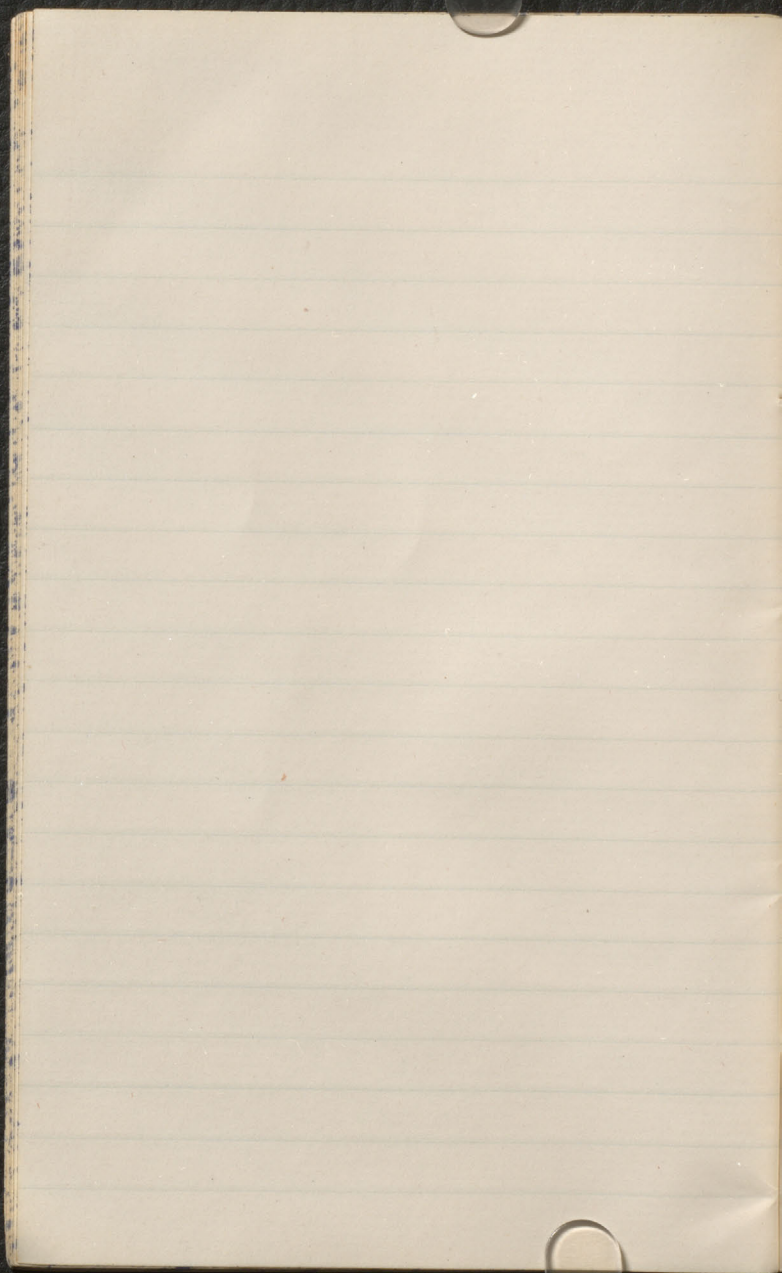


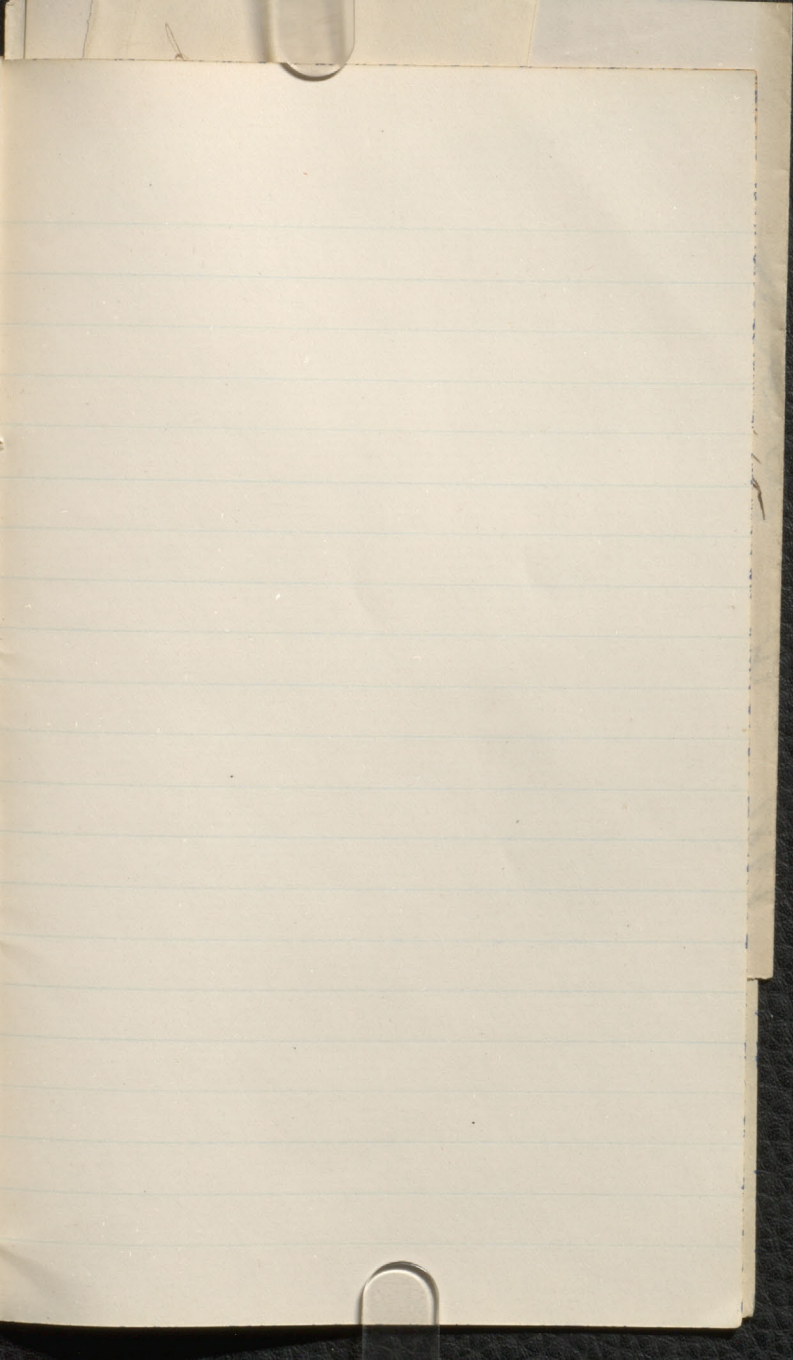


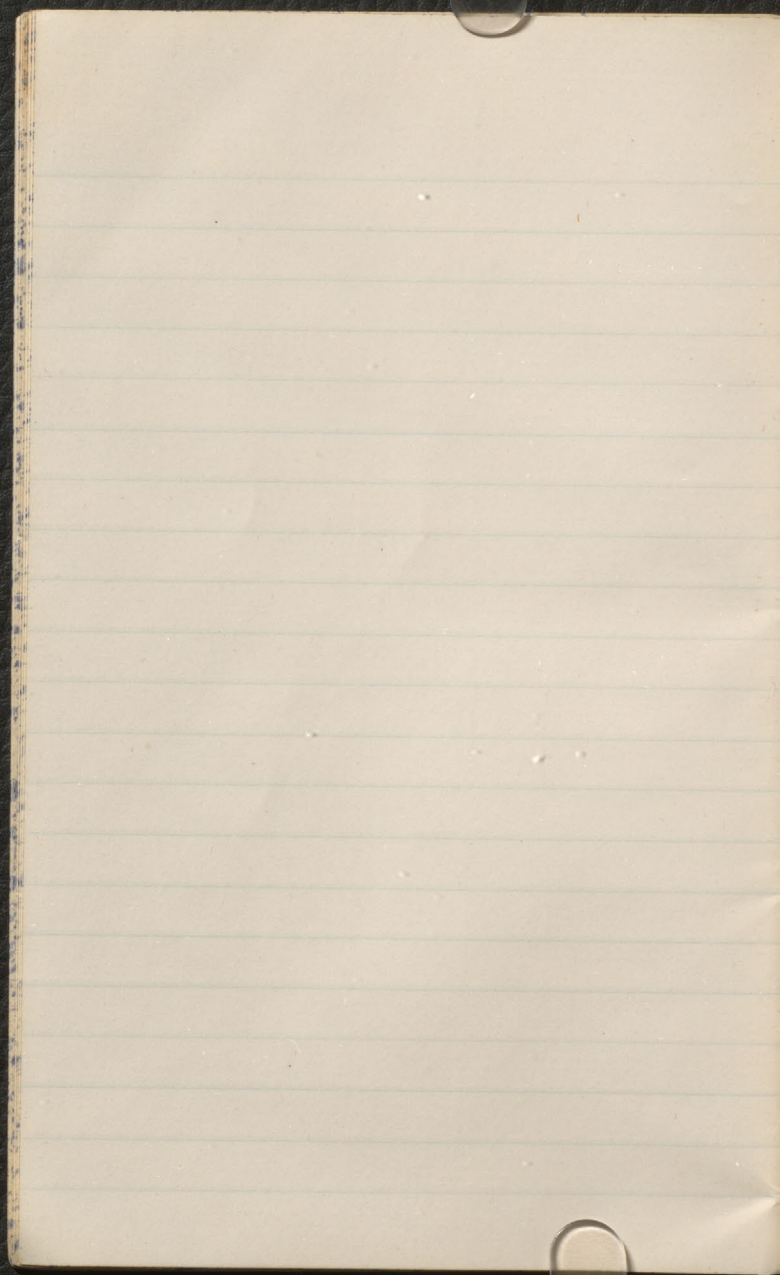


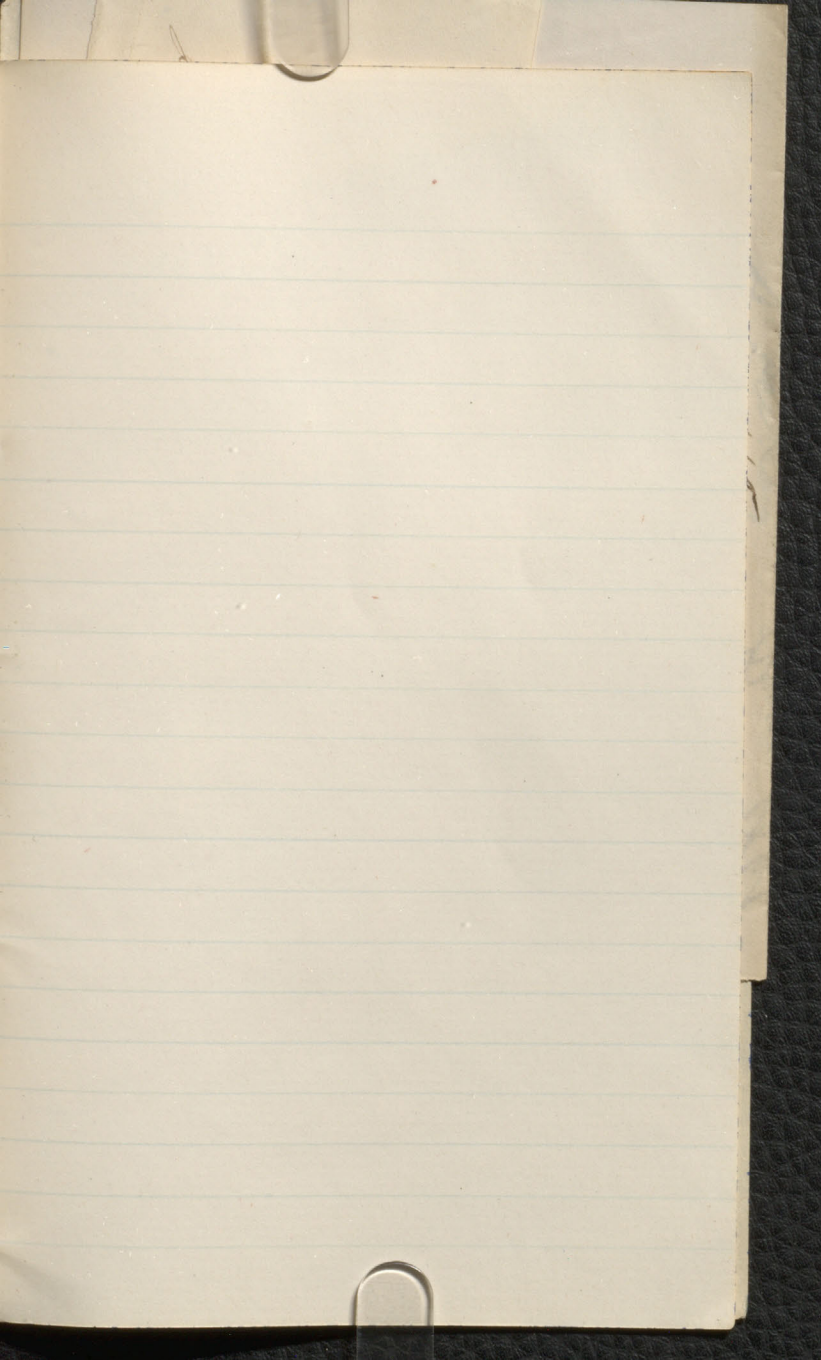


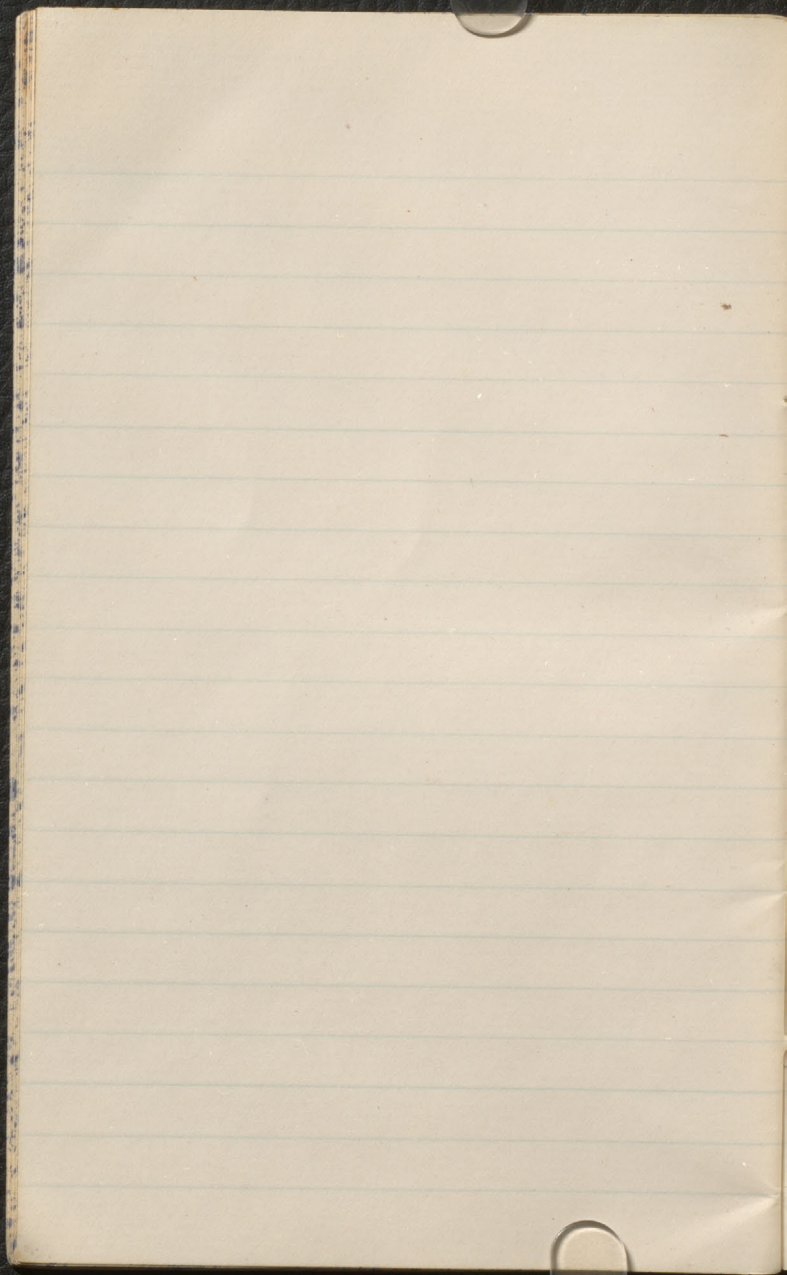


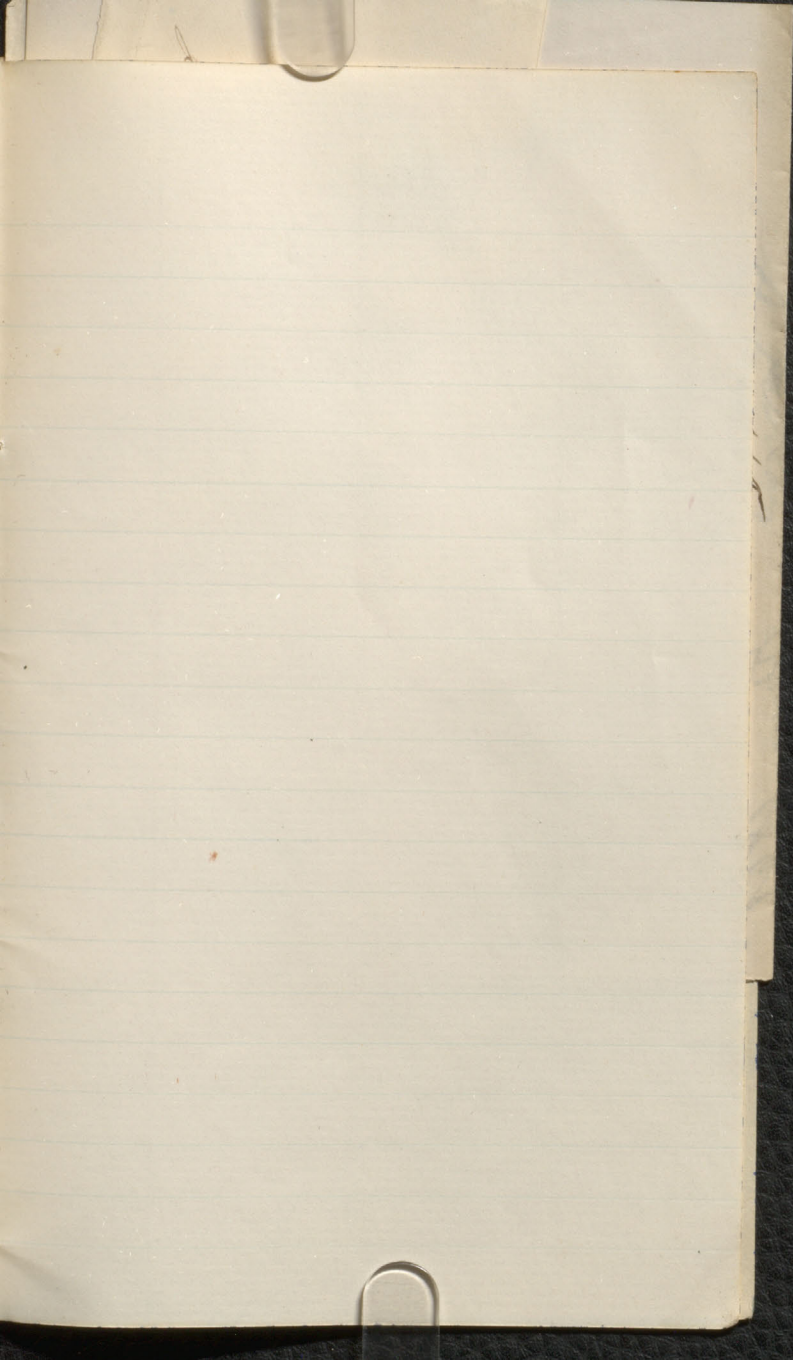














Eric



Evolution of an artist -
from a pencil - pencil & pot

$$\begin{array}{r} .0165 \\ \underline{23.6} \end{array}$$

$$\begin{array}{r} 380 \\ \underline{495} \end{array}$$

$$\begin{array}{r} 38.946 \\ \underline{} \end{array} = 38.94 \text{ hrs.}$$

$$\begin{array}{r} .0165 \\ \underline{22.4} \end{array}$$

$$\begin{array}{r} 660 \\ \underline{} \end{array}$$

$$\begin{array}{r} 330 \\ \underline{} \end{array}$$

$$\begin{array}{r} 220 \\ \underline{} \end{array}$$

$$\begin{array}{r} 36.966 \\ \underline{} \end{array} \sim 36.96$$

$$\begin{array}{r} 2775.90 \\ \underline{} \end{array}$$

$$\begin{array}{r} 57.95 \\ \underline{} \end{array}$$

Leidy, Mammals of Nebraska
Icelandic Sci 1869

Leidy Extinct Vertebrates of
Western Territories 1842

Heer Flora Helvetiae
Wintertiden in Luzern
1839

Heer Sandsteine Kantonen J u
Climate of Switzerland 1844

of Secretary

See Flora fornicis Archer

Winterthur or Zurich

Breeds Flora

See Bertrage for

Glauk

See a variegated plant

Winterthur

Large Flora in Sitka

See

Chusula's article Flora

Nov 1859





Evolution of an artist -
from a pencil - pencil & foot

Evil

$$\begin{array}{r} 2175.90 \\ - 57.95 \\ \hline 2117.95 \end{array}$$

$$\begin{array}{r} 36.96 \\ \hline 880 \\ 380 \\ 660 \\ \hline 4.22 \\ - 5910. \end{array}$$

$$38.94 \text{ hours} =$$

$$\begin{array}{r} 946.88 \\ \hline 088 \\ 495 \\ 990 \\ \hline 2.22 \\ - 5910. \end{array}$$



V

B

He

He

T

✓ Leidy, Mammals of Nebraska
A Acad Sci 1869

✓ Leidy Extinct Vertebrates of
Western Territories
Washington 1842

Heer Flora Helvetica
Winterthur u Zurich
1839

Heer Sandets Klimat af os
Climate & Vegetation
of Fennoscandia Paris 1861

Heer Flora fossilis Arctica
Winterthur u Zurich

Heer Beiträge zur Brecht Flora

Heer u Vanurmen Island
Plants
Winterthur

Unger Flora im Sitka
Nunna

Murmelog White Flora
Anala 1859