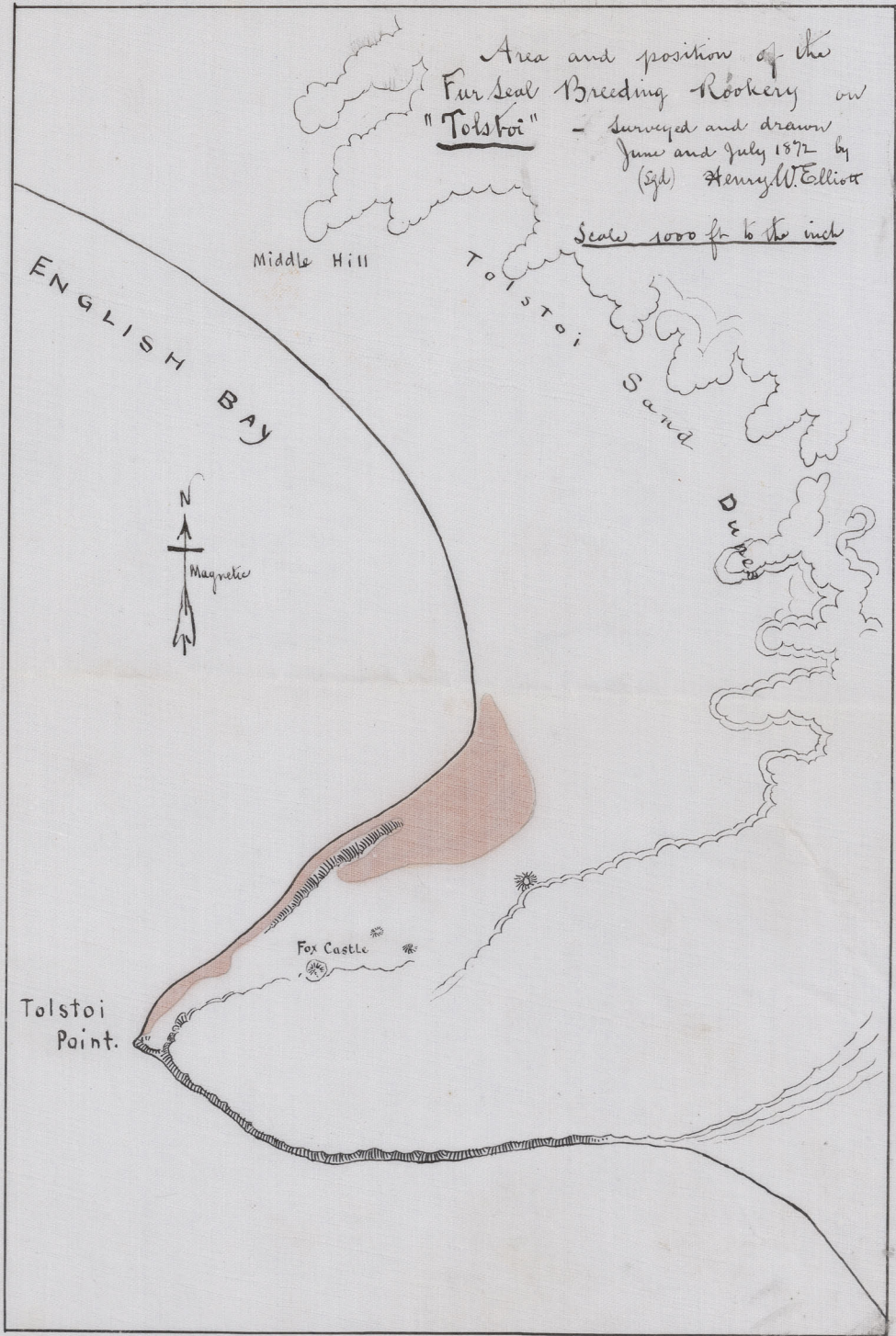


Rookeries

Copies from Elliott's
original plans.

Elliott's original survey of 1872-74

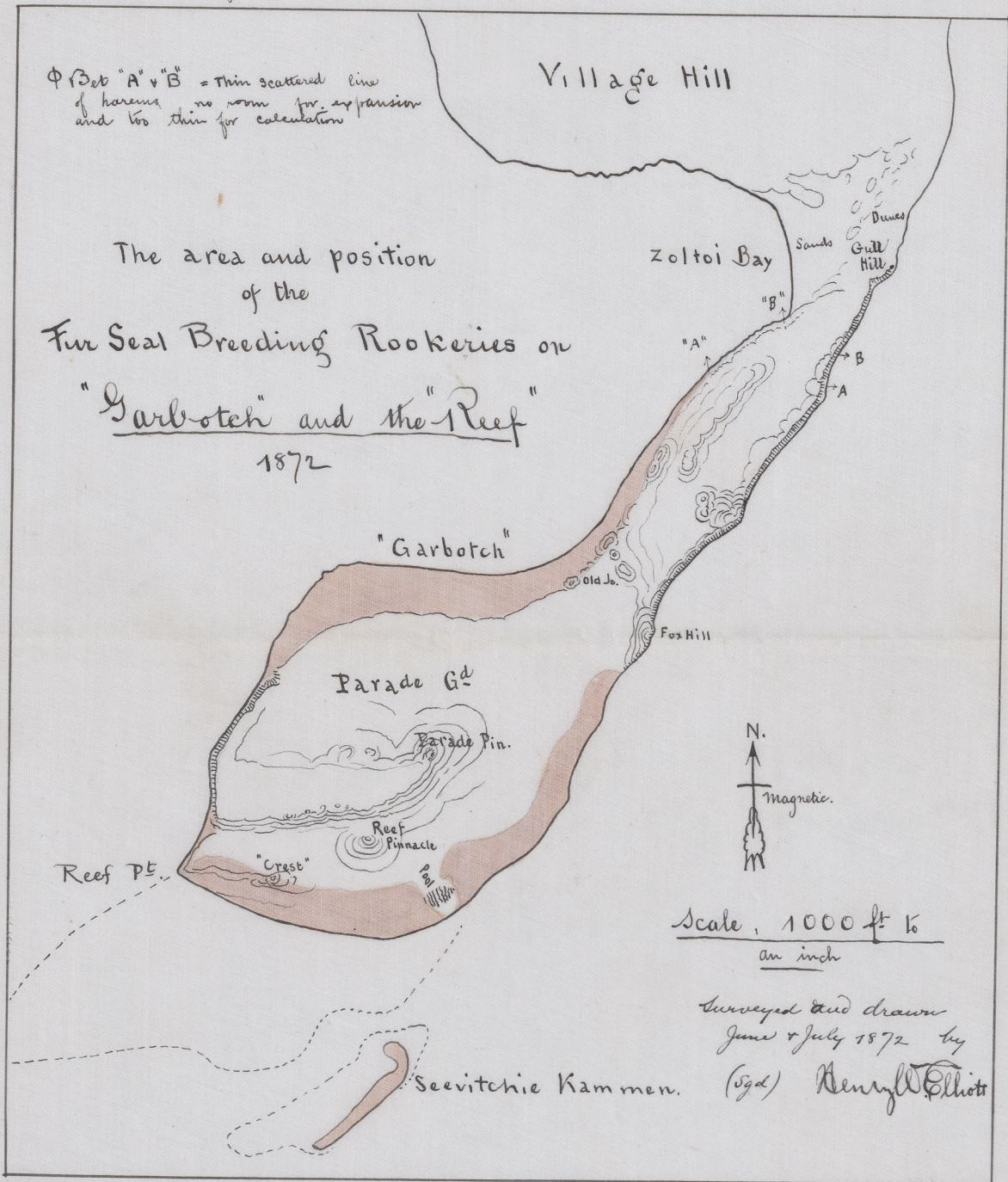


3/9/91
Z. C. C. C.
C. C. C.

Elliott's original survey of 1872-74.

Φ Bet "A" + "B" = Thin scattered line
of harems, no room for expansion
and too thin for calculation

The area and position
of the
Fur Seal Breeding Rookeries on
"Garbotch" and the "Reef"
1872

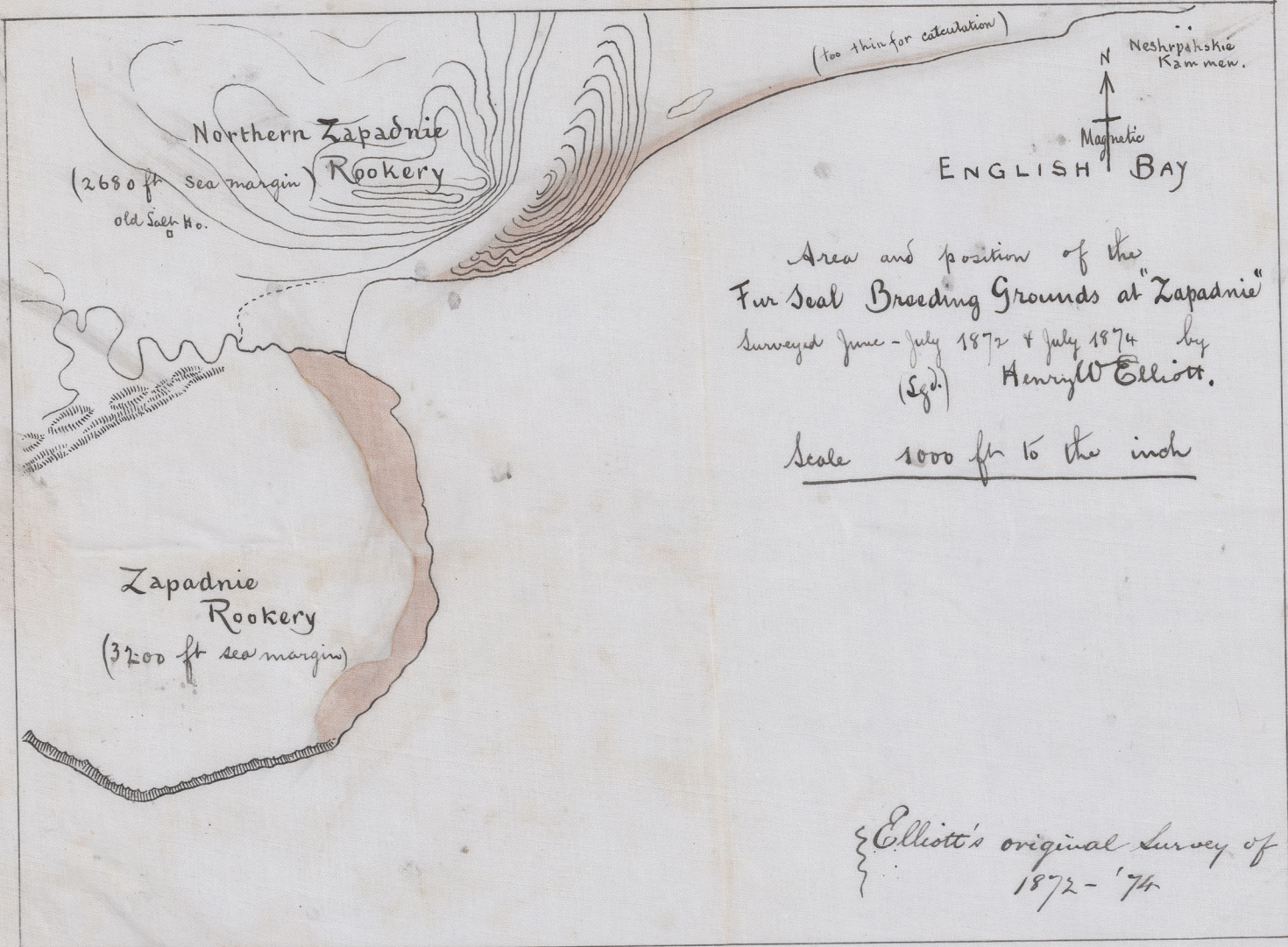


Scale, 1000 ft to
an inch

Surveyed and drawn
June & July 1872 by

(Sgd) Henry Elliott

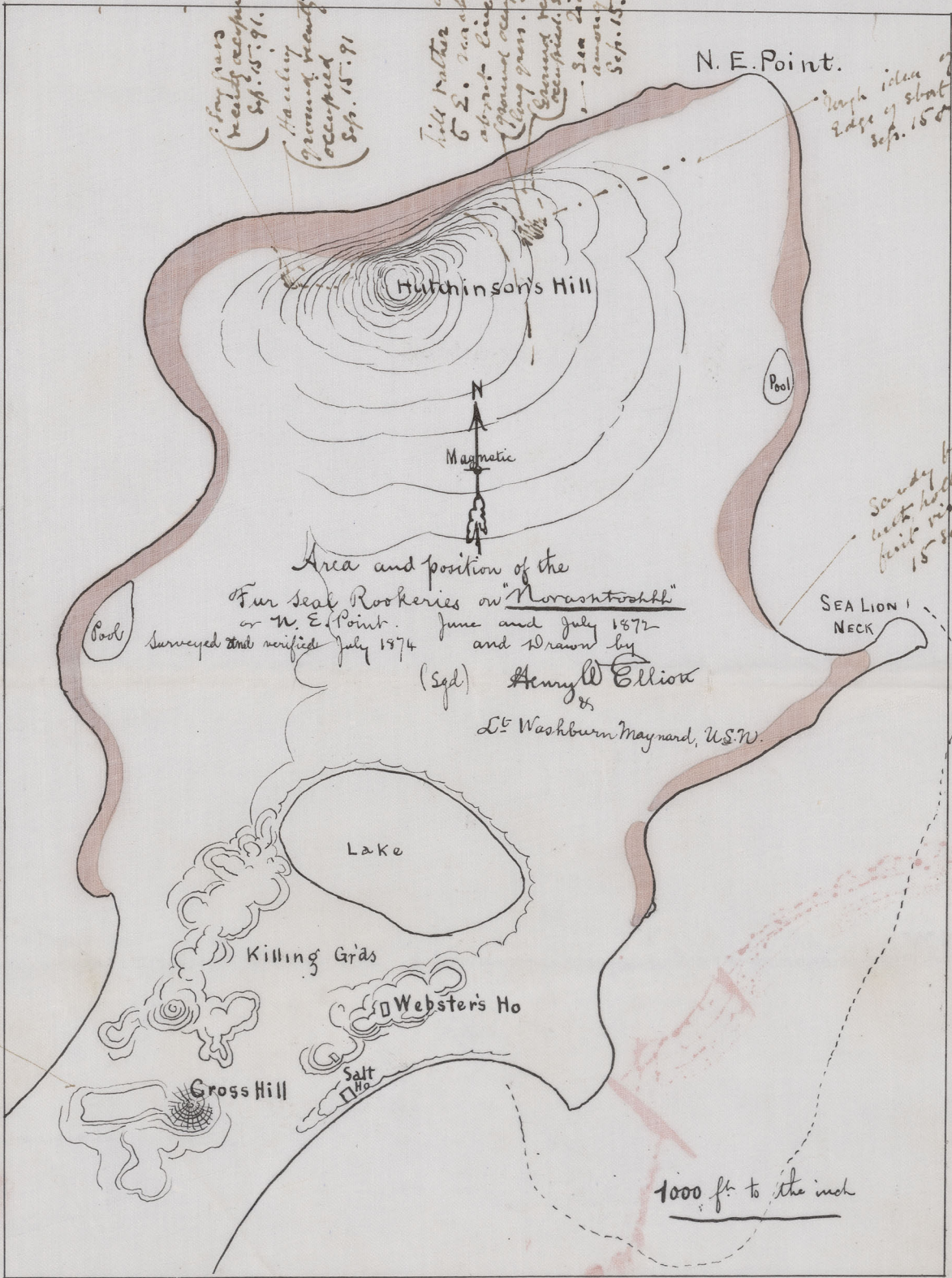
3/7/91
True Copy
E. Elliott



3/7/91
True copy
C. V. S.

Elliott's original Survey 1872-74

N. E. Point
1872-74



(Sandy beach
recently occupied
Sep. 15-91.)
(Hauling
ground recently
occupied
Sep. 15-91)

Hill rather abrupt -
6 E. reaches flat
about line
ground occupying is
along pass. Sep. 15-
Ground recently
occupied. Sep. 15-
Sea along
among seals
Sep. 15-

N. E. Point.
Depth idea of
edge of sand grass
Sep. 15-91

Sandy beach
with hollows
into which
15 Sep. 91.

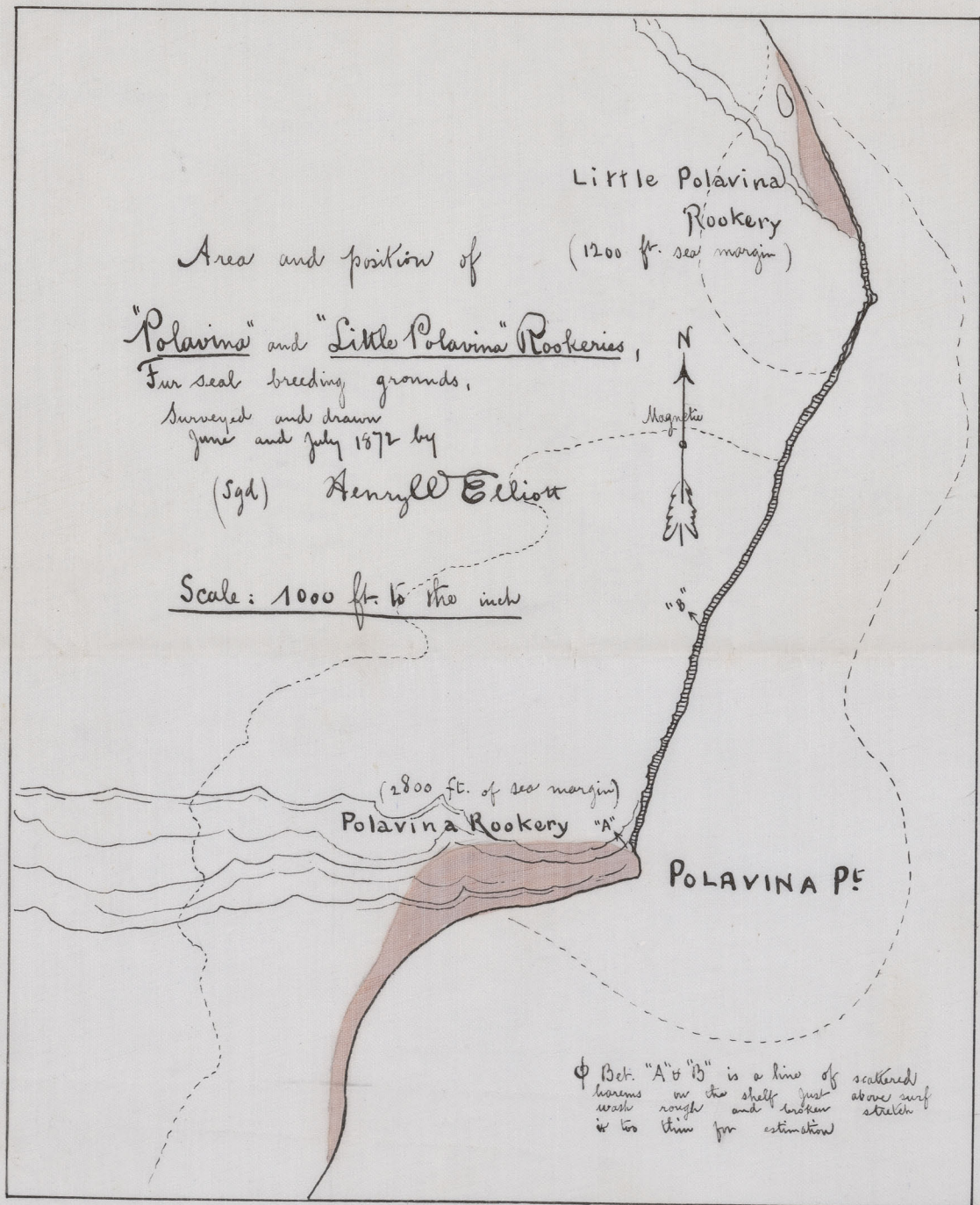
Area and position of the
Four seal Rookeries on "Norastohkk"
or N. E. Point. June and July 1872
Surveyed and verified July 1874 and Drawn by
(Sgd) Henry D. Elliott
Lt Washburn Maynard, U.S.N.

about 5000 hollows
15 Sep. 91.

3/7/91

True Copy
C.D.S.

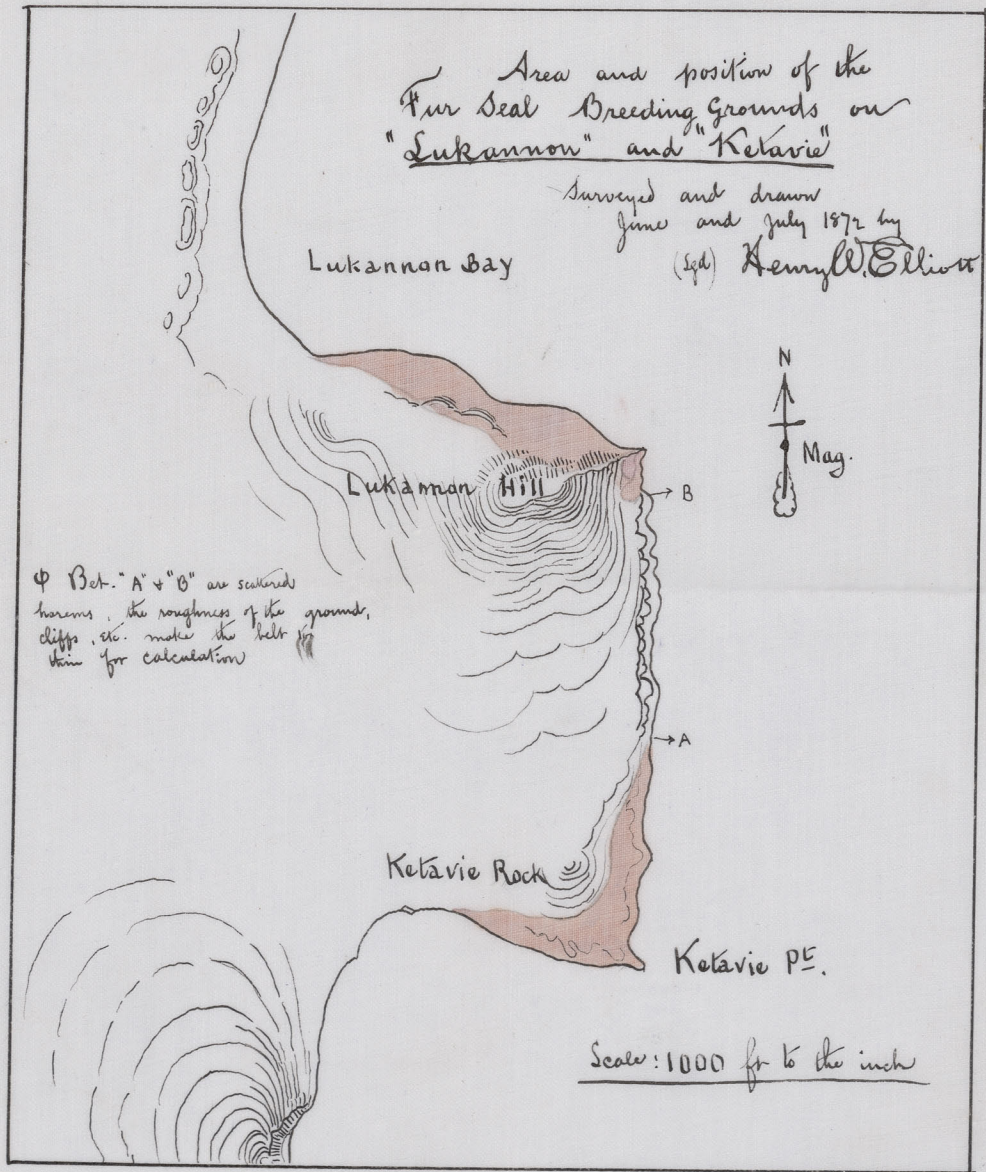
Elliott's original survey of 1872. 74



3/7/91

True Copy
L.S.

Elliott's original survey 1872-'74



3rd/7/91
True Copy
G.O.S.

Great Eastern Rookery

Showing area & position of Breeding seals.
Jul 20, 90.

High Mesa 400 ft.

Rank Grass Moss & flowers.

sea lions.

South
Mag.

Many Sea lions.

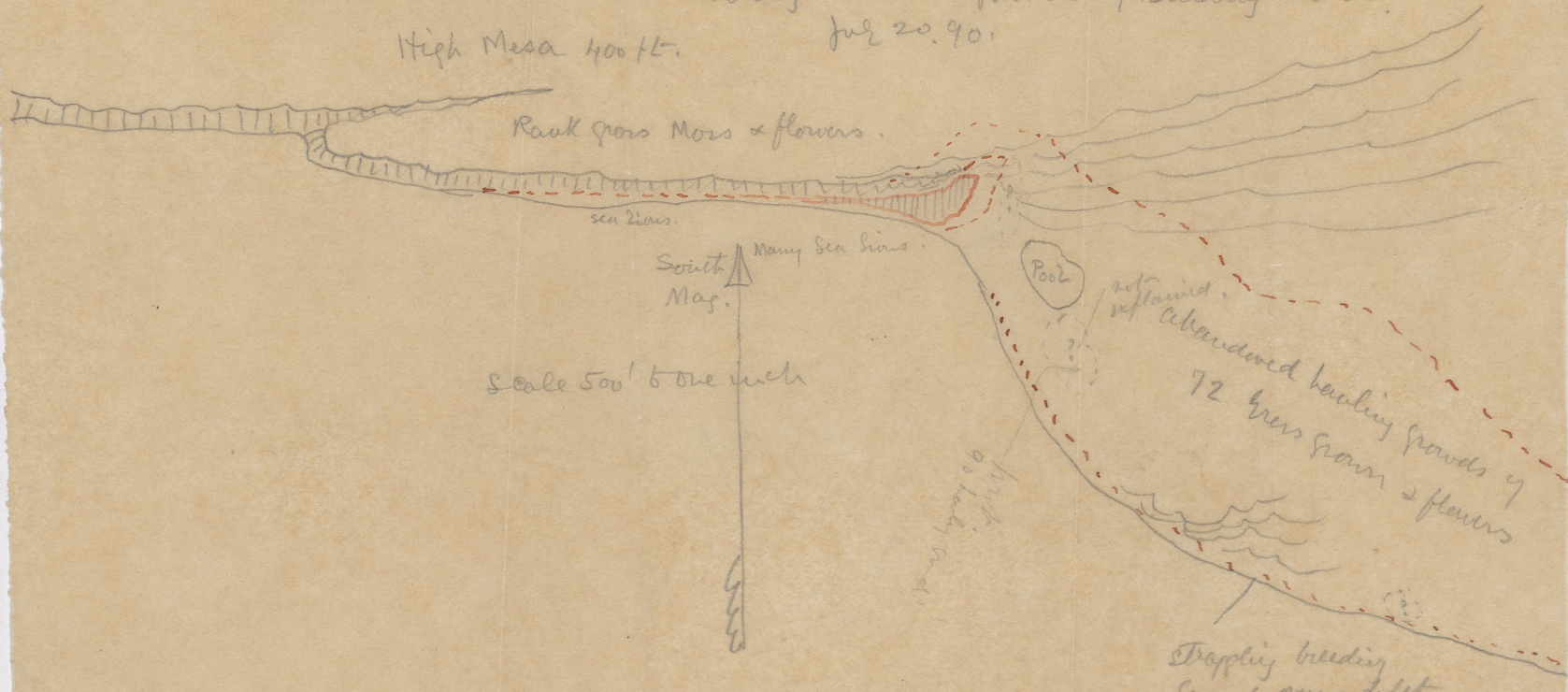
Scale 500' to one inch

Pool

20 ft. deep.

Abandoned hauling grounds of
72 Grass Grass & flowers

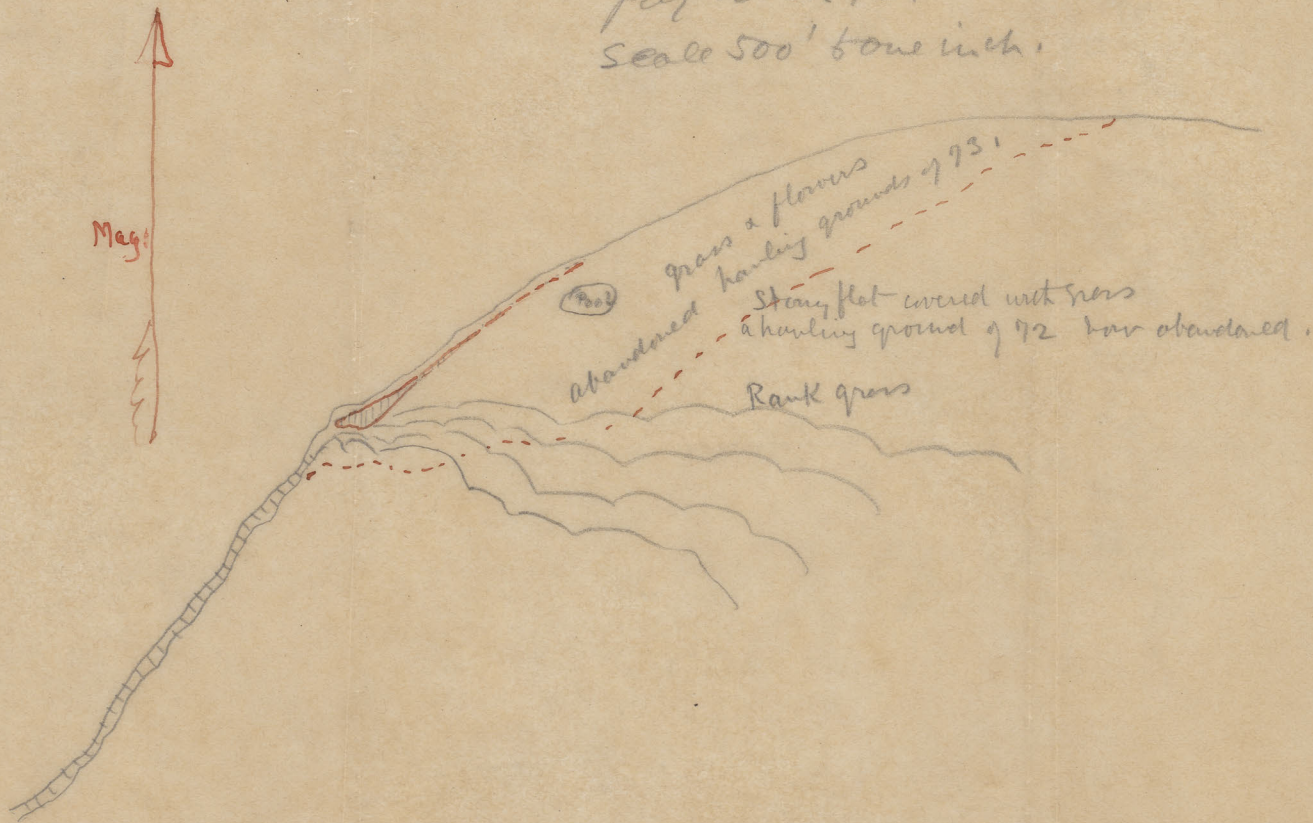
Droping breeding
ground, only 2 feet
of 5 feet

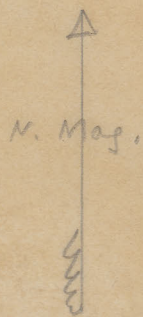
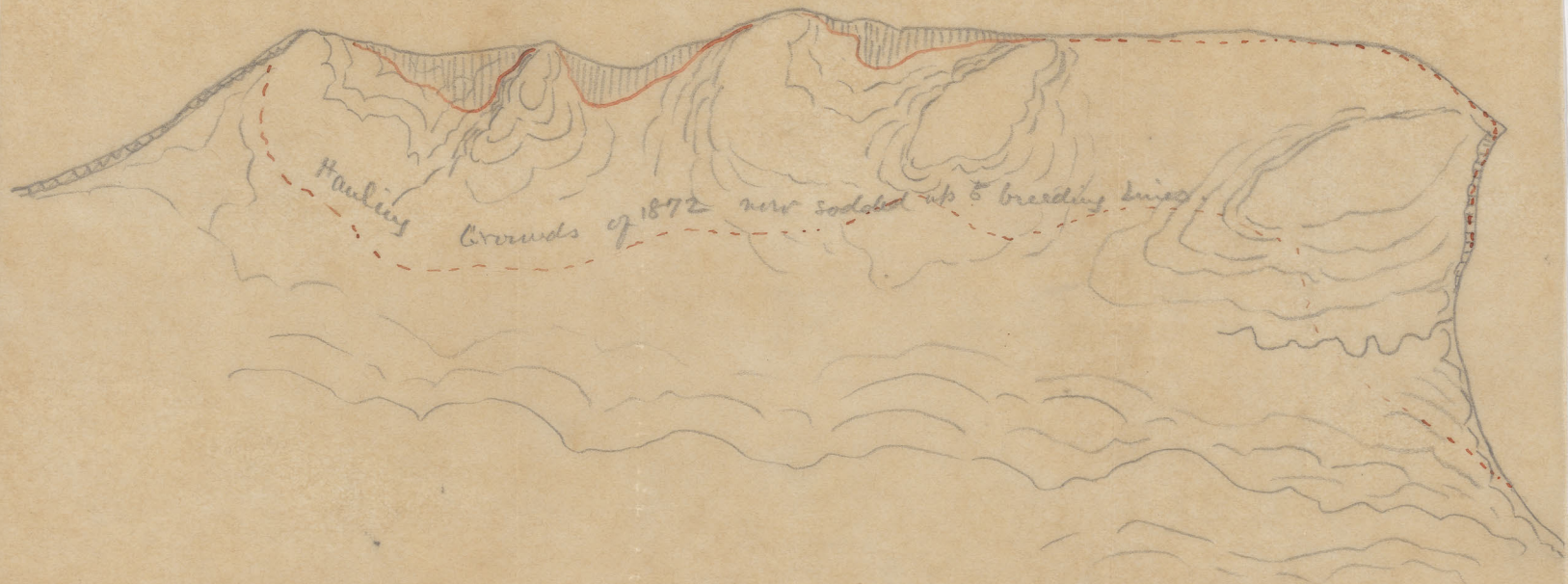


Sittle Eastern Rookery,

July 20-21, 90.

Scale 500' to one inch.





500' to one inch.

North Roddeny
Jul 19, 90.



||||| Breeding seals.
 Poodled out today July 20. 90.



Scale 500' to an inch

Families taking ground back to this line July 28. Rocky & breeding ground not bounded as on Elliotts map 772.

Ref. P.E.