









# BERMUDA

*Nature's Fairyland*



QUO FATA FERUNT  
BERMUDA COAT OF ARMS

## OFFICIAL TOURISTS GUIDE BOOK

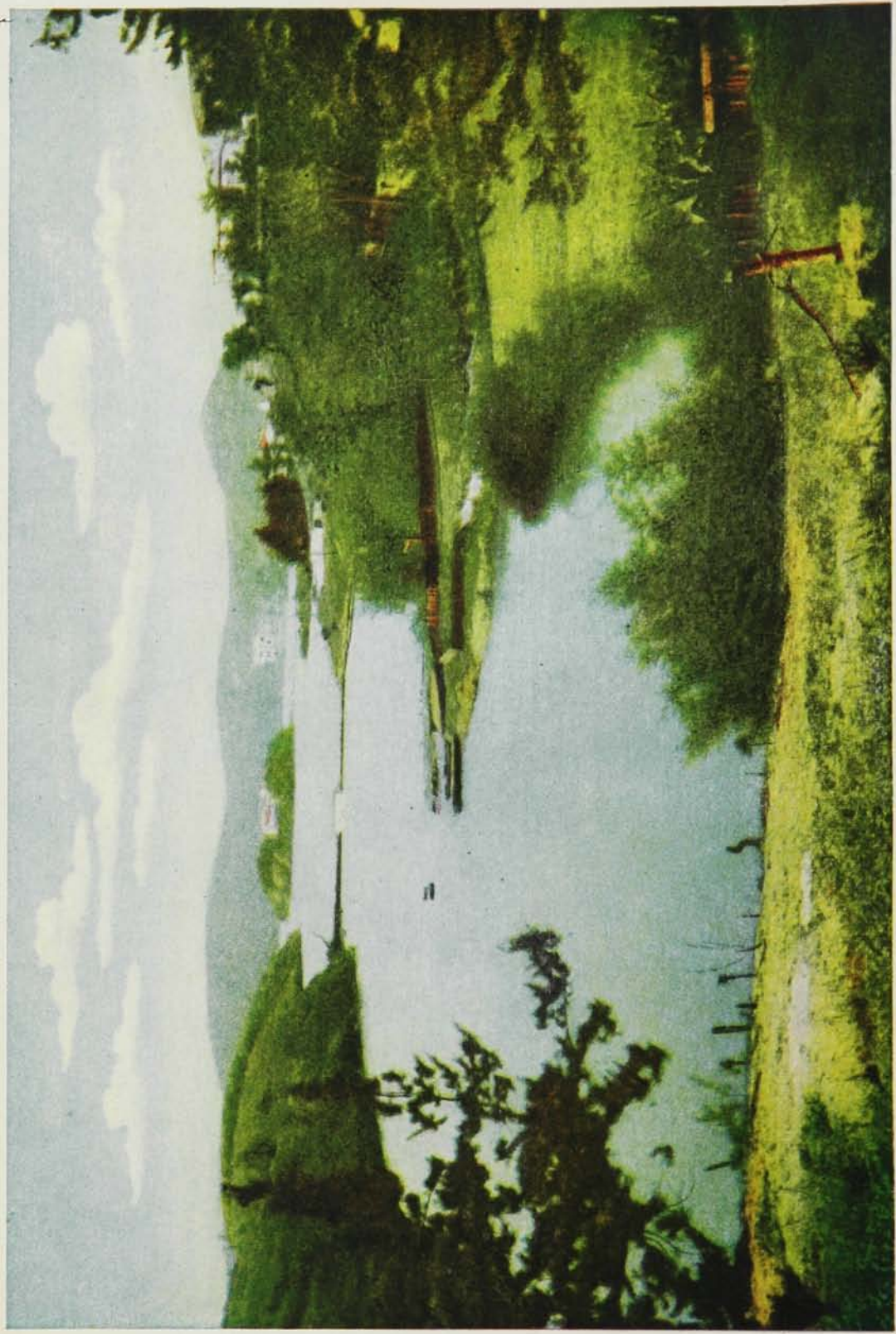
ISSUED BY  
THE BERMUDA TRADE  
DEVELOPMENT BOARD  
A DEPARTMENT OF  
THE BERMUDA GOVERNMENT











BERMUDA - A Fairyland in Fact as well as in Fancy.  
(“MULLET BAY” ST. GEORGES, BERMUDA)



# BERMUDA

## *Nature's Fairyland*

### Official Tourists Guide Book

An Authoritative Publication Issued for  
the Convenience of Bermuda Tourists

1915-1916



Issued by  
The Bermuda Trade Development Board  
A Department of  
THE BERMUDA GOVERNMENT

# Introduction

THE Bermuda Trade Development Board takes pleasure in offering to the prospective tourist to Bermuda an official guide. This book presents authentic pictures or scenes in and about the islands of Bermuda which, with the accompanying descriptive matter, will prove of chief value and interest from the standpoint of the tourist, leaving to other and more pretentious works, detailed facts of Bermuda's historical and geographical existence.

The printer's art, as herein expressed, conveys in but slight measure the opportunities which Bermuda—so truly epitomized as "Nature's Fairyland"—offers for pleasure, rest and recreation; for to really know Bermuda—as it has been known and loved by such eminent Americans as Mark Twain, William Dean Howells, Woodrow Wilson, Frances Hodgson Burnett, and hosts of others—one must see it in person.

In herewith presenting official data concerning temperature and climatic conditions, and a scale of prices covering hotels, and transportation in and about the islands of Bermuda, this Board wishes again to emphasize the authoritative nature of the statistics.

The Bermuda Trade Development Board will gladly answer individual inquiries for information which will insure the comfort and pleasure of the tourist or commercial visitor.

THE BERMUDA TRADE DEVELOPMENT BOARD

# Index to Subjects and Illustrations

GEOGRAPHICAL POSITION .....Page 5

*Illustrations:*

*Land Ho! Bermuda as Seen From the Steamer's Deck—Fleet of Small Craft Welcoming Steamer.*

CLIMATE AND SCENERY .....Page 7

*Illustrations:*

*Palms Along Drive on Harrington Sound.—Great Sound Road from Paget.—Where the Eye is Greeted with Opal Tinted Water, Gorgeous Flowers and Soft Summer Skies.—Hamilton at Twilight From the Paget Shore.—The Custom House Gardens Overlooking Hamilton Harbor.—Panoramic View of Hamilton, Paget in Foreground.—Scenes in and About Hamilton Harbor.—Hamilton Harbor by Moonlight.—Scenes In and About Quaint Old St. George's.—St. George's Harbor and St. David's Island From the Terrace of the St. George Hotel.—Specimens of Rare and Beautiful Trees.—Walsingham, the House in Bermuda Associated With the Famous Irish Poet, Tom Moore.—Coral Formations Along the South Shore.—Mt. Langton; Khyber Pass.*

ATTRACTIONS FOR THE TOURIST .....Page 21

*Illustrations:*

*Golf Amid Picturesque Surroundings.—Golf Links at Spanish Point.—Bermuda Tennis Courts Will Please the Most Fastidious.—Ladies' Championship Doubles Tournament on the Hamilton Hotel Courts.—The World's Finest Roadways Make Driving a Delight.—Tallyho Party Leaving Hamilton Hotel.—Cycling and Horseback Riding are Popular Recreations.—A Bevy of Girl Cyclists Bearing Lunch Baskets for a Day's Picnic in the Perfumed Cedar Hills.—A Paradise for Water-craft of all Types.—Sailing by Moonlight Where a Phosphorescent Sea Laps a Coral Strand.—Bathing at Beaches or in Sheltered Harbors and Bays.—Bathing Pool at the Princess Hotel.—Fishing That's Fit for Kings.—The Aquarium at Agar's Island.—Bermuda's Caves and*

*Sea-Gardens, Marvelous Works of Nature—Parade Grounds at Prospect and Some of the Diversions of the Military Forces at Bermuda.*

**HOTEL AND STEAMSHIP FACILITIES . . . . .Page 37**

*Illustrations:*

*HOTELS: The Hamilton Hotel, Hamilton.—The Hotel Inverurie and Cottages, Paget.—The Princess Hotel, Hamilton.—The Hotel Frascati, Hamilton Parish.—The St. George Hotel, St. George.—The Shore Hills Hotel, St. George.—The Point Pleasant Hotel, Hamilton.—The New Windsor Hotel, Hamilton.—The Kenwood Hotel, Hamilton.—The Belmont Hotel, Warwick.—The Imperial Hotel, Hamilton.—The Colonial Hotel, Hamilton.—The Eagle's Nest Hotel, Hamilton.—The South Shore Hotel, Paget.*  
*STEAMSHIPS: S. S. "Bermudian," The Quebec S. S. Co.—S. S. "Oceana," The Bermuda-American S. S. Co.—S. S. "Arcadian," and S. S. "Chignecto," The Royal Mail Steam Packet Co.*

**INFORMATION FOR THE TOURIST . . . . .Page 51**

*Illustrations:*

*Methods of Transportation In and About Bermuda. Bermuda's Beautiful Cottages.—British Coinage with Equivalents in U. S. Money.—Public Buildings in Bermuda.—Table of Official Meteorological Observations.*

**PRODUCTS OF BERMUDA . . . . .Page 57**

*Illustrations:*

*Field of Easter Lilies.—Variegated Test of Tomatoes at the Bermuda Agricultural Station, 1914.—Some of the Important Agricultural Products.—A Large Cluster of Grape-Fruit. A Well Laden Papaw Tree.*

**HISTORY IN BRIEF . . . . .Page 61**

*Illustrations:*

*Tomb and Monument of Admiral Sir George Somers.—St. Peter's Church at St. George's.—One of the Ancient Ruins on Castle Island.—"Then Goodbye to our Friends Afloat."*

**MAP OF THE BERMUDA ISLANDS. . . . .*Inside of back cover***





LAND HO! BERMUDA AS SEEN FROM THE STEAMER DECK

## Geographical Position

**B**ERMUDA, or the Bermudas, to use a less popular name, ranks as Great Britain's oldest colony. It is the most northerly group of coral islands in the world, and the only ocean winter resort that lies almost at the gateway of New York. Bermuda is situated in the latitude of Charleston, S. C., the exact position being lat.  $32^{\circ} 19'$  north, long.  $64^{\circ} 49'$  west. Only 666 nautical miles separate New York from Bermuda, and the voyage of express passenger steamers occupies forty-eight hours or less. From Halifax, N. S., to Bermuda, the distance is 720 miles, from Cape Hatteras, it is 568 miles.



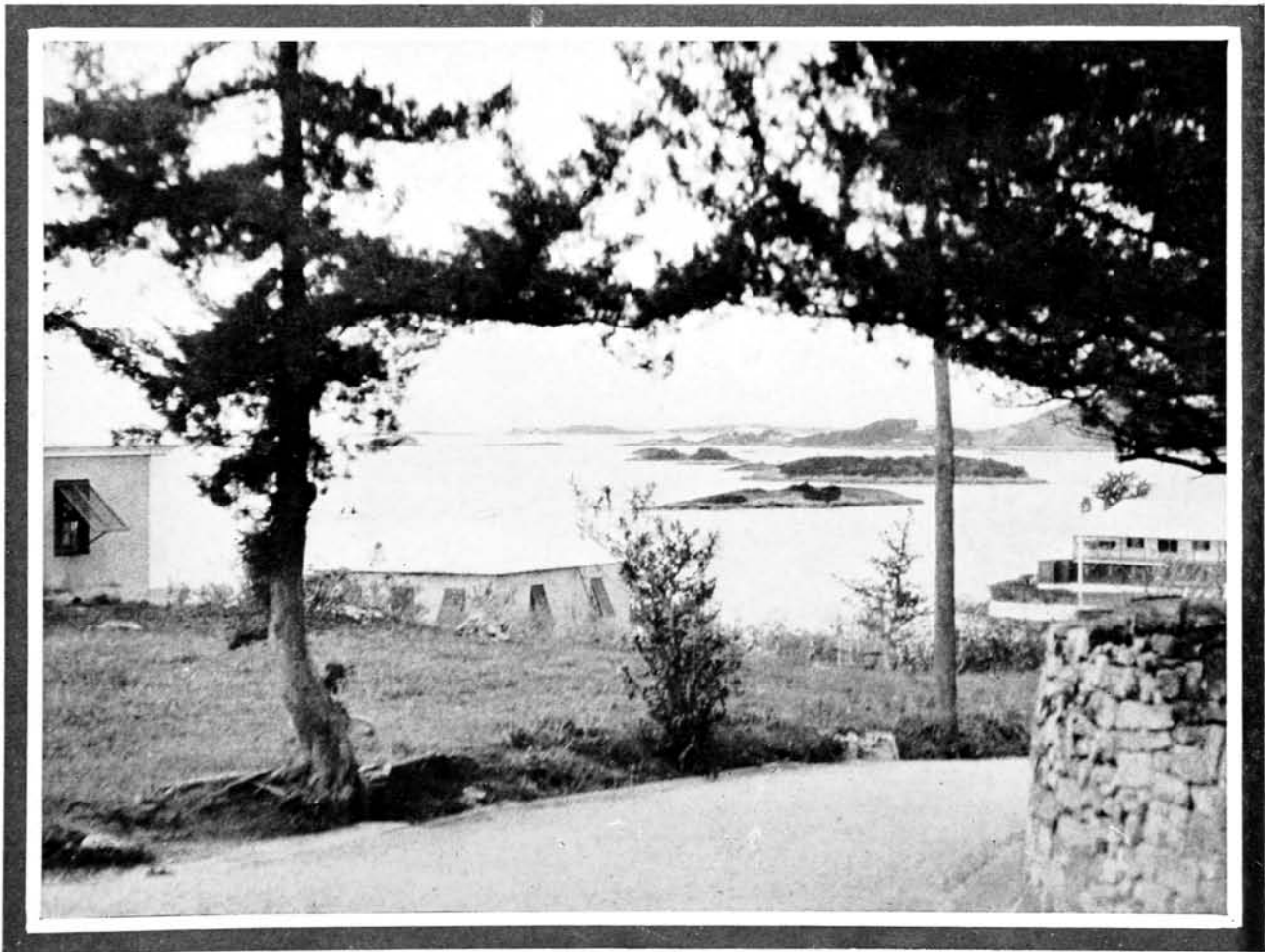
FLEET OF SMALL CRAFT WELCOMING AN INCOMING STEAMER



PALMS ALONG DRIVE ON HARRINGTON SOUND

# Climate and Scenery

**B**ETWEEN Bermuda and the mainland flows the belt of warm water known as the Gulf Stream. Its influence upon the climate of the islands is vital and beneficial. Frost, snow, fog or ice-laden winds are unknown in Bermuda—they cannot penetrate the barrier of the Gulf Stream. Thus when winter grips the North American continent, when gray skies predominate, and all vegetation is dormant, Bermuda rejoices in a balmy atmosphere, brilliant sunshine and a country ablaze with flowers. The islands are not only protected by natural forces from low temperatures; they are also too far removed from the tropics to suffer excessive heat. Their semi-tropical position is a happy medium, inasmuch as it precludes the possibility of abnormal temperatures, sudden or violent changes or a season of prolonged rains. The best index of the equable quality of the climate is found in the average temperatures.



GREAT SOUND ROAD FROM PAGET

House in Foreground at Extreme Right Was Occupied By President Woodrow Wilson and Family on the Occasion of Their Visit to Bermuda

GREAT SOUND FROM SOUTHAMPTON



GIBBS HILL LIGHT HOUSE



GREAT SOUND FROM SOMERSET



IRELAND ISLAND

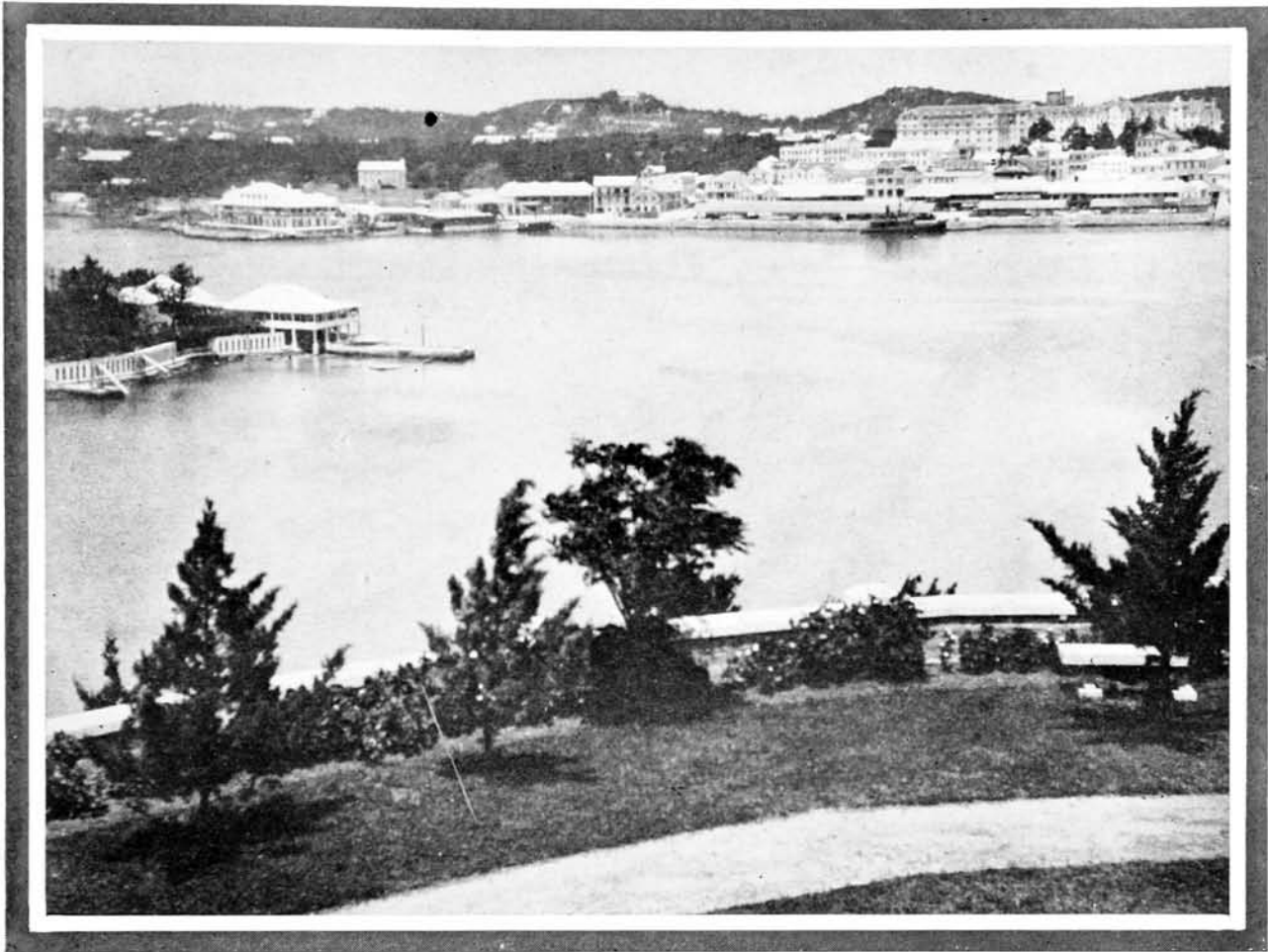
ISLE OF WHITE FROM PAGET



PANORAMIC VIEW FROM GIBBS HILL LIGHT-HOUSE

WHERE THE EYE IS GREETED WITH OPAL-TINTED WATER GORGEOUS FLOWERS AND SOFT SUMMER SKIES



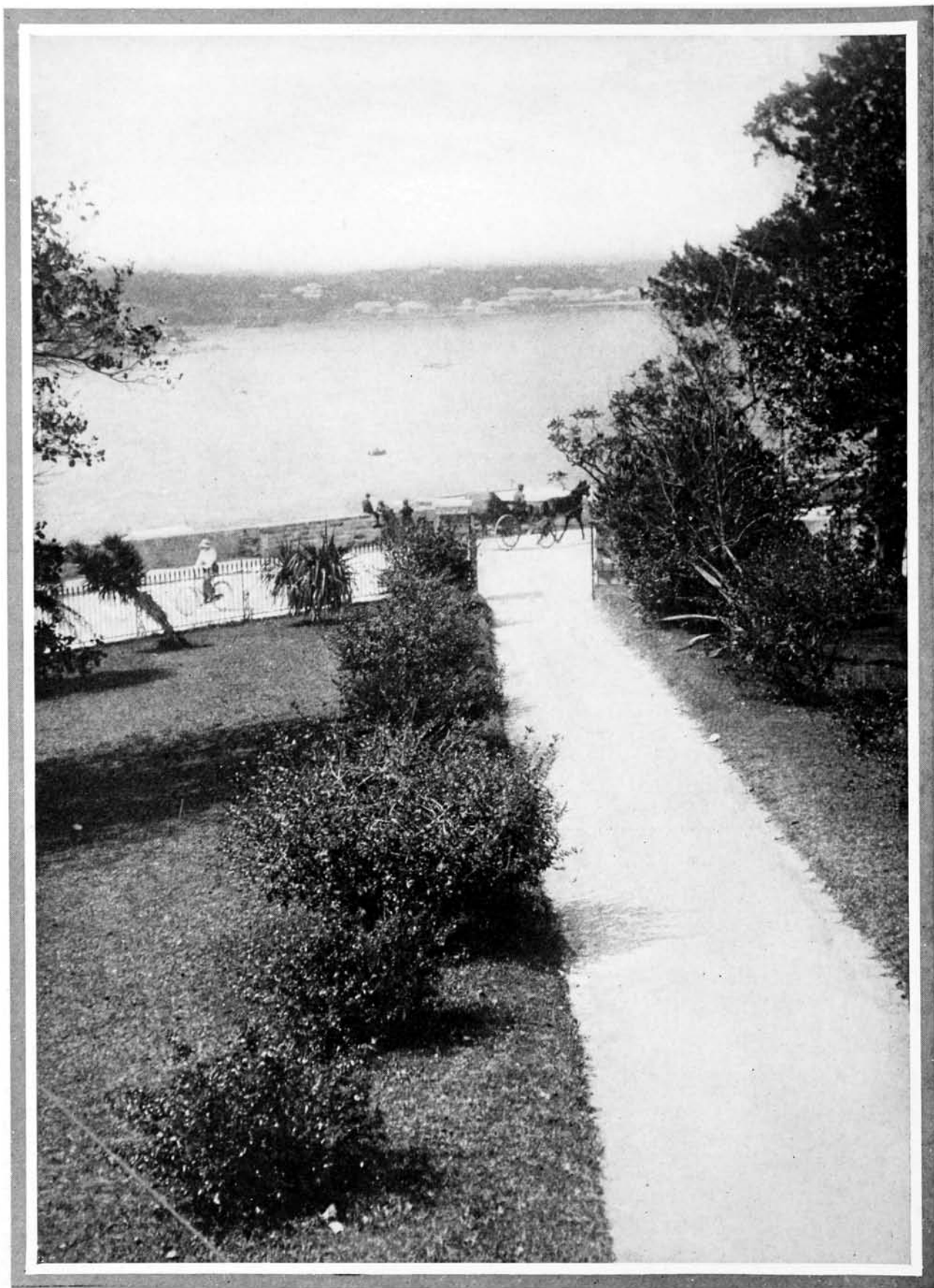


HAMILTON AT TWILIGHT FROM THE PAGET SHORE

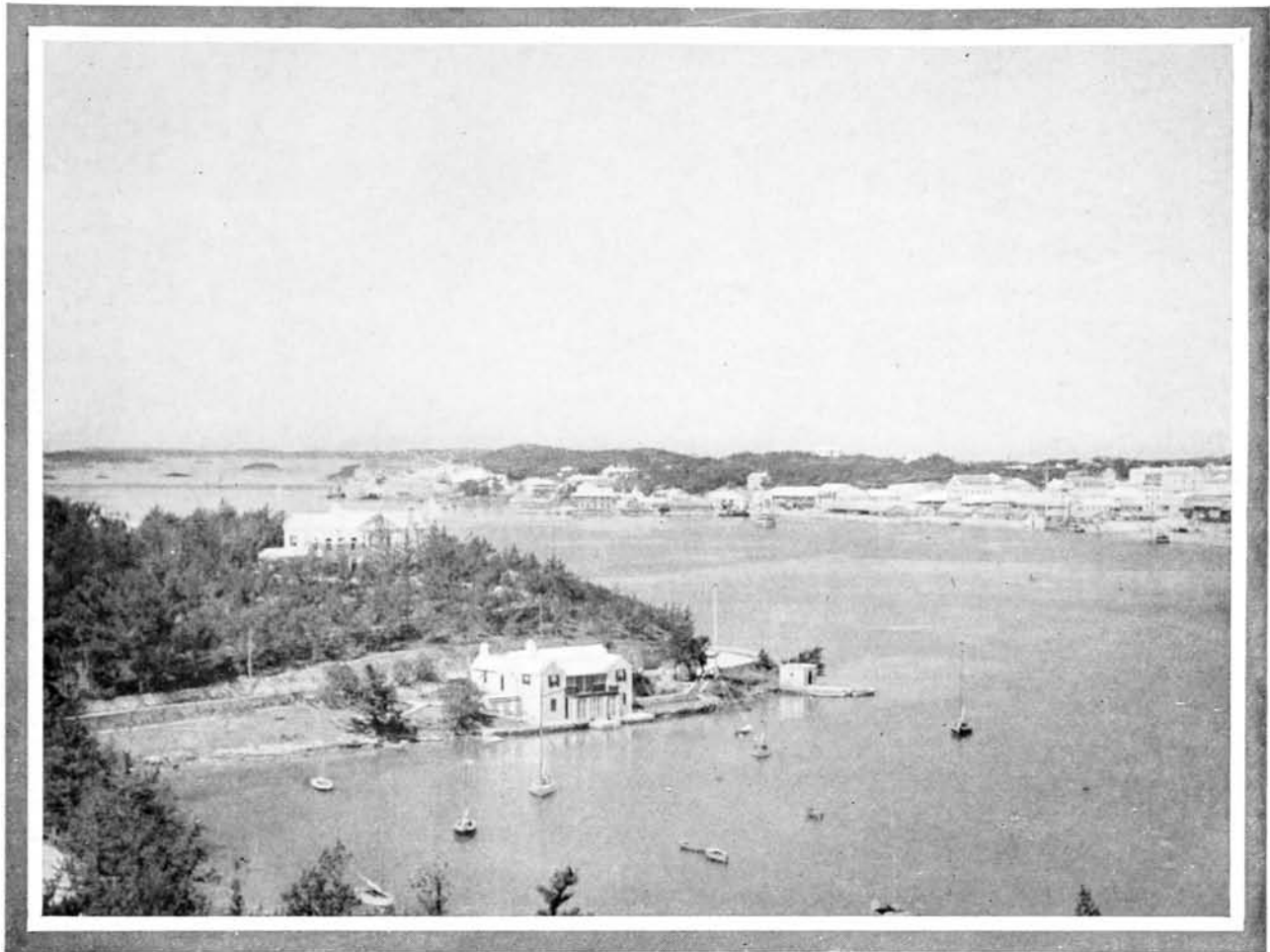
The Spring range is from 67° to 73°; Summer, 79° to 82°; Autumn, 73° to 79°; Winter, 63° to 70°. The average temperature for the year is 70 degrees. Bermuda, therefore, is a Summer as well as a Winter resort; for its climate is one of perpetual Spring, minus the cold, raw days associated with the northern Spring.

It is possible at all seasons to be outdoors in Bermuda. Windows and doors remain open through the year; heating plants are superfluous, and open fires are a necessity only on rare occasions. The salutary effect of the soft, salt air, in combination with the sun and a charming, reposeful environment, is immediate, particularly in the cases of visitors who are nervous or overstrained physically. The healthfulness of the islands is beyond question. For more than fifty years, they have been immune from an epidemic of disease of any character; moreover, there is no suspicion of malaria in the colony. Sanitation is carefully supervised by the government, while the porous coral rock, affording perfect drainage, is in itself a natural protection of undoubted importance.

Bermuda's foundation is the crest of a submarine mountain, rising some



THE CUSTOM HOUSE GARDENS OVERLOOKING HAMILTON HARBOR



PANORAMIC VIEW OF HAMILTON—PAGET IN FORE-GROUND

15,000 feet from the bottom of the Atlantic; the substance of its hills, rock and soil is composed of the shells of minute coral-builders, which have encircled the islands with a solid reef barrier or atoll. Bermuda's setting is an iridescent sea, whose colors and tints take their tone from the white coral bottom of the bays, inlets and coves and from the sky, clouds, the agitation of the surface, and the refraction of light. It is water as changeable as the opal, for its colors are never fixed. The shade of the beryl drifts into blue of the sapphire, delicate purple and brown patches are visible, then lighter blues are finally merged into the softest green. This water is so clear that it is possible to watch the play of fish among the marine growth thirty feet below the surface.

From the sea, Bermuda appears to be a solid mass of undulating land—an illusion that is quickly dispelled when one sets foot on shore. Actually, the group consists of one hundred or more islands, some of which are mere rocks. From almost any eminence one may glimpse a lagoon or harbor of calm, shimmering water, studded with clusters of tiny islets, and bordered by coralline beaches of pure white sand, low rocky promon-





CITY OF HAMILTON  
OVERLOOKING  
THE HARBOR  
YACHT AT ANCHOR

HAMILTON  
FROM PAGET

HAMILTON FROM  
ANOTHER VANTAGE  
POINT IN PAGET

THE PAGET  
SHORE

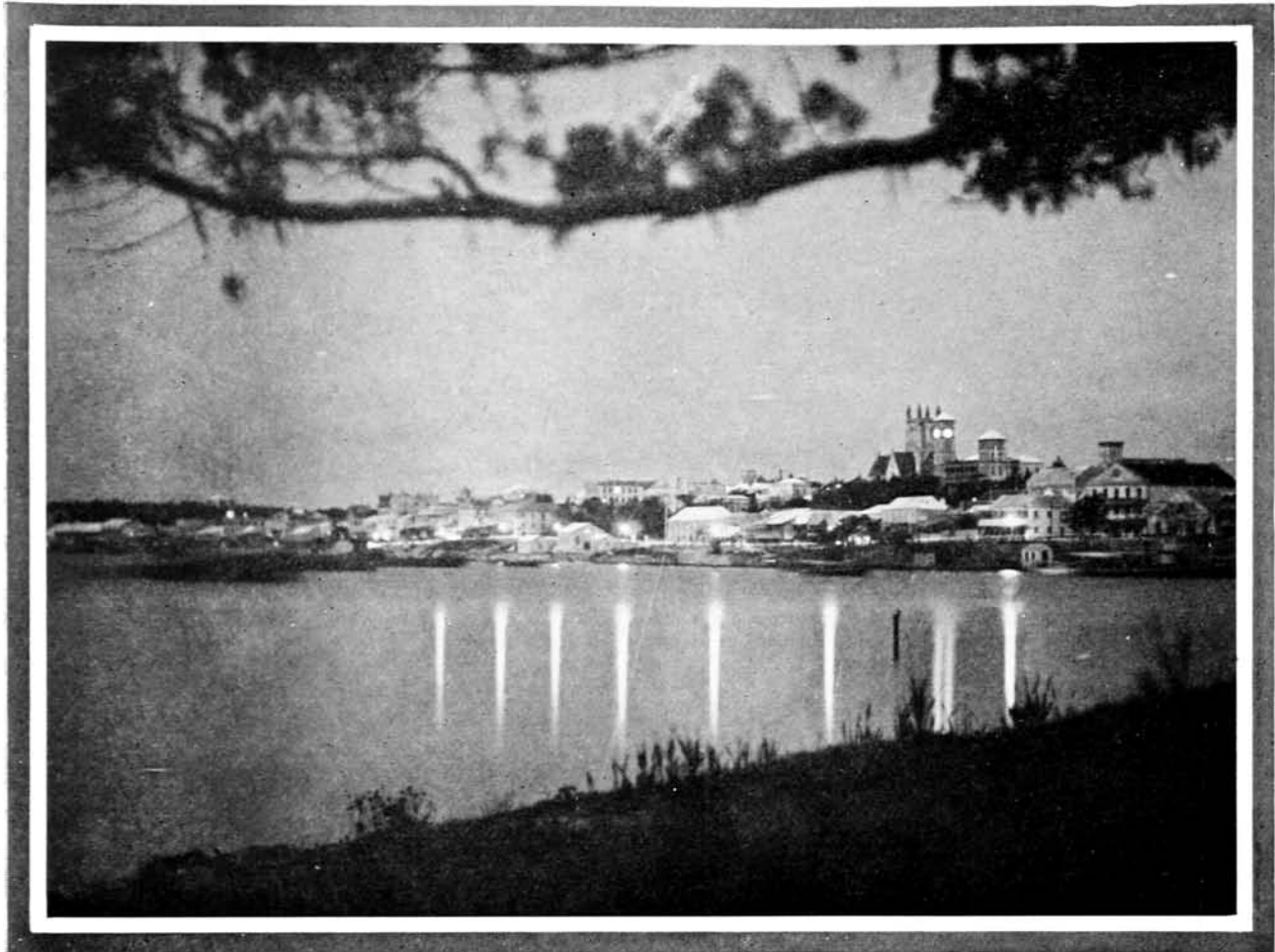
CUSTOM  
HOUSE  
GARDENS

CORAL  
DRIVE-WAY  
ALONG  
PAGET SHORE

SCENES IN AND ABOUT HAMILTON HARBOR

Hamilton Harbor is Rich in Scenic Beauty as These Views Indicate





HAMILTON HARBOR BY MOONLIGHT

tories, and the dense growth of mangrove and cedar. On the south shore especially there are bold cliffs, cut into grotesque forms by wind and wave, with rugged boulders at their base, and long stretches of sand, to which the surf brings its tribute of beautiful seaweed and dainty shells. Here, too, are the "boilers" or circular atolls, where the coral-builders work, and among the sand dunes and cliffs, which are held together by trailing vines, the mysterious tropic-bird, or longtail, makes its home.

The area of Bermuda is 19 1-3 square miles. Only the larger islands are inhabited, and all save one are connected by bridges, which complete a comprehensive road system with a total length of more than one hundred miles. It is doubtful whether any country in the world has more perfect roads than Bermuda. Their surface, white like the beaches, is smooth and hard, for their base is solid rock, and they never become muddy even after a heavy downpour of rain. In many cases, where the reduction of grade was necessary, the roads have been cut through the hills, forming miniature canyons, whose sides reveal the peculiar stratification which the drifting sands produced when the land was moulded by the



CASTLE HARBOR



THE QUAINNESS OF OLD ST. GEORGES CHARMS ALL VISITORS



ST. DAVIDS LIGHT-HOUSE



GENERAL VIEW OF QUAIN ST. GEORGES



THE CAUSEWAY LEADING TO ST. GEORGES



ROYAL PALMS AND PRIDE OF INDIA TREES IN THE PUBLIC GARDENS OF ST. GEORGES



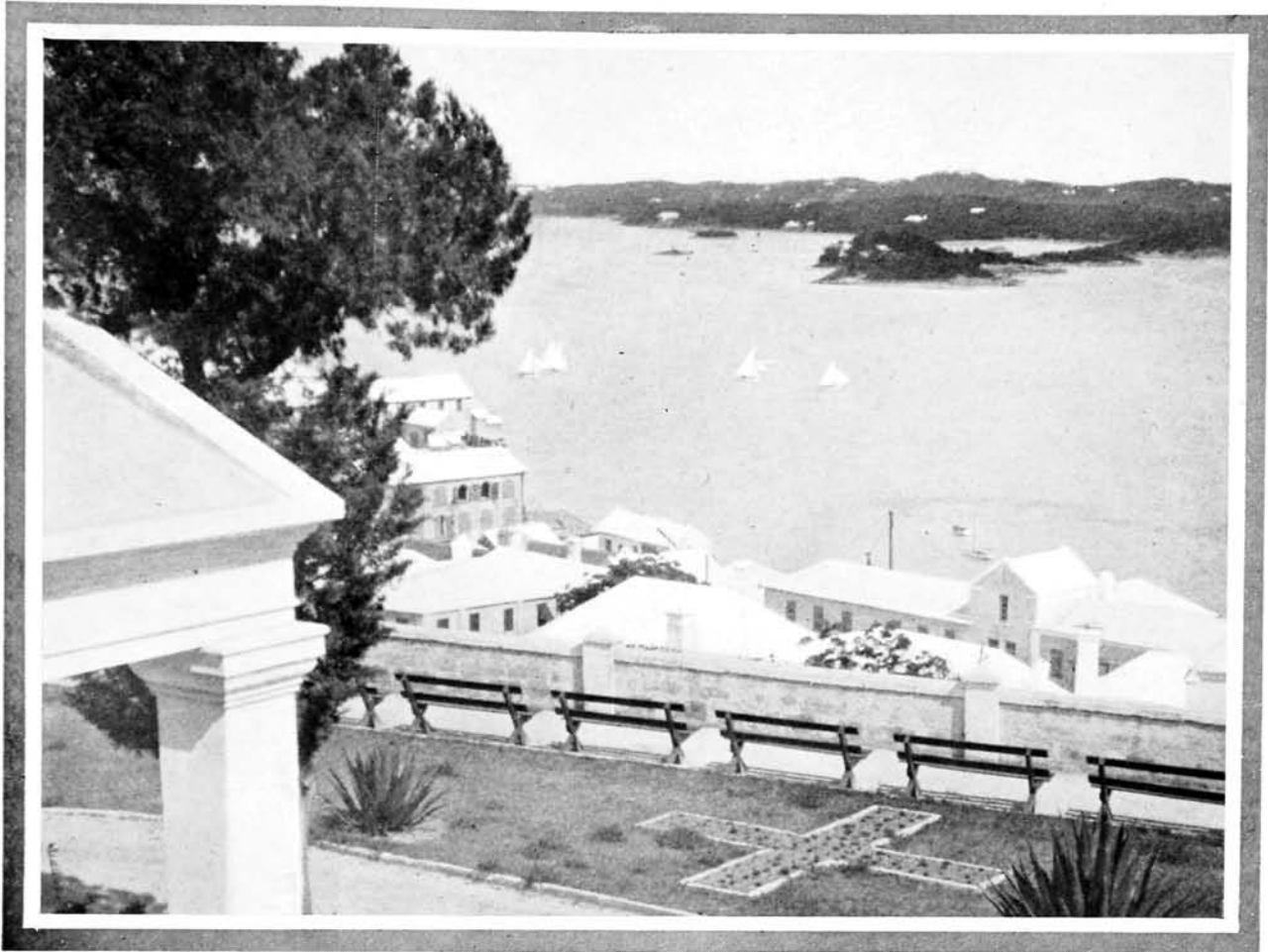
PALMETTO TREE ALONG THE ROAD TO ST. GEORGES



ST. GEORGES FROM ST. DAVIDS ISLAND

SCENES IN AND ABOUT QUAIN OLD ST. GEORGE'S

There is an Indescribable Charm to St. George's, With Its Fair Vistas of Harbors and Bays, Its Old Fashioned Houses, Narrow Streets and Walled Gardens



ST. GEORGE'S HARBOR AND ST. DAVID'S ISLAND FROM THE TERRACE OF THE ST. GEORGE HOTEL

wind ages ago. All of the hills, it should be noted, are nothing more than huge sand dunes, which have been cemented and solidified by action of the rain water upon the lime secreted by coral-builders. The process is known to geologists as "aeolian."

Bermuda is noted among botanists for its remarkable variety of vegetation. Side by side grow trees from the tropic and temperate zones. The climate encourages luxuriant growth and profuse flowering. The chief flowering shrub is the oleander, which spreads over the hillsides to act as a windbreak for the crops, and puts forth great masses of pink, white and red flowers. The oleander borders every road for miles, its chief rival being the Chinese hibiscus, which is not so plentiful but possesses a wider range of floral colors. Among the more conspicuous trees and shrubs are the pigeon-berry, bearing clusters of yellow fruit; the royal poinciana, with orange and scarlet flowers; the queen of shrubs, poinsettia, fiddlewood, coffee, banana, sugar-apple, sword tree, tamarind, avocado pear, cochineal, pomegranate, bamboo, royal gru-gru, and date





A GROVE OF CEDAR TREES



SCREW PALMS



BANYAN TREE



ROYAL PALMS



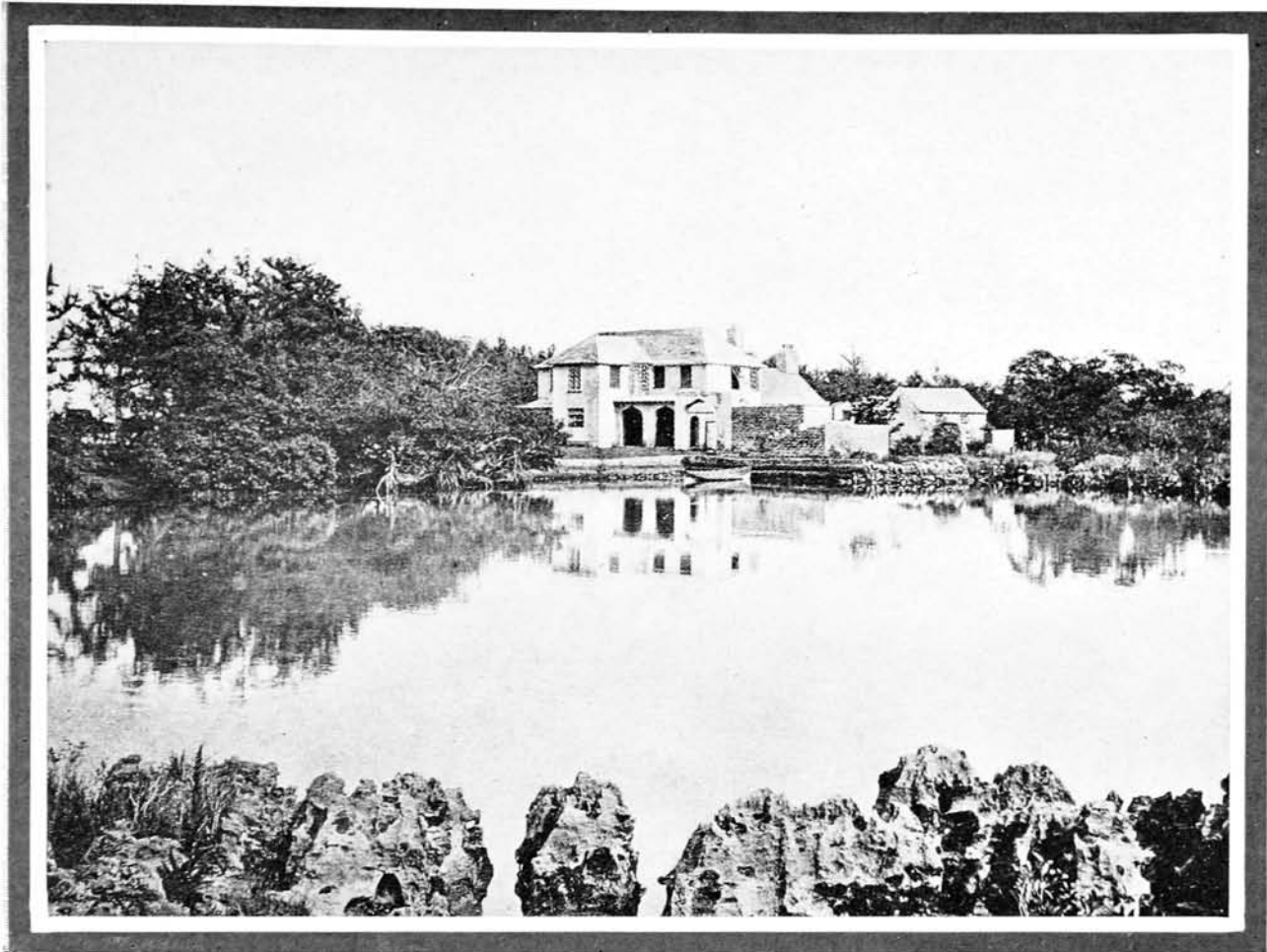
PALMETTO TREE



A LARGE RUBBER TREE

SPECIMENS OF RARE AND BEAUTIFUL TREES

Bermuda is Noted For the Variety and Beauty of Her Trees, the Specimens Here Shown Being Only a Small Proportion Of Her Riches in Vegetation



WALSINGHAM—THE HOUSE IN BERMUDA ASSOCIATED WITH THE FAMOUS  
IRISH POET— TOM MOORE

palms, the palmetto, which gives the Bermudian his native hats, and the juniper, locally called the cedar, the most useful and ubiquitous tree in the islands. Roses bloom during the Winter months, and in March and April fields of Easter lilies whiten the valleys and perfume the air. Bermuda is truly a land of flowers.

It is also a wholesome, noiseless country, without factories, railroads, trolley cars and automobiles. The Bermudians are a warm hearted, hospitable people, who pass a simple life, most of them taking their living from the soil. Their houses, built of native coral stone and whitewashed, are clean and comfortable, and they take great pride in their gardens. Every house has a garden and its own private water supply. Although Bermuda has about 1,000 inhabitants to the square mile, there is no overcrowding, and even in the towns, there is ample space for gardens around the houses. Evidences of poverty are so few as to cause remark. Even the poorest colored native is not underfed or ragged. All are law-





SOUTH SHORE NEAR  
TUCKERSTOWN

CORAL FORMATION  
SOUTH SHORE



BOILER  
ROCKS

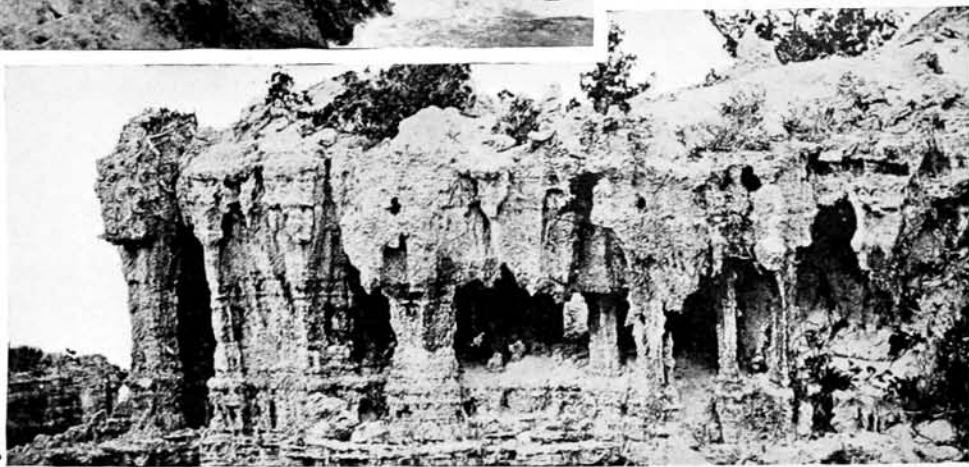
NATURAL  
ARCHES.  
TUCKERSTOWN



CHIMPANZEE ROCK-A FREAK  
OF NATURE ALONG THE  
SOUTH SHORE

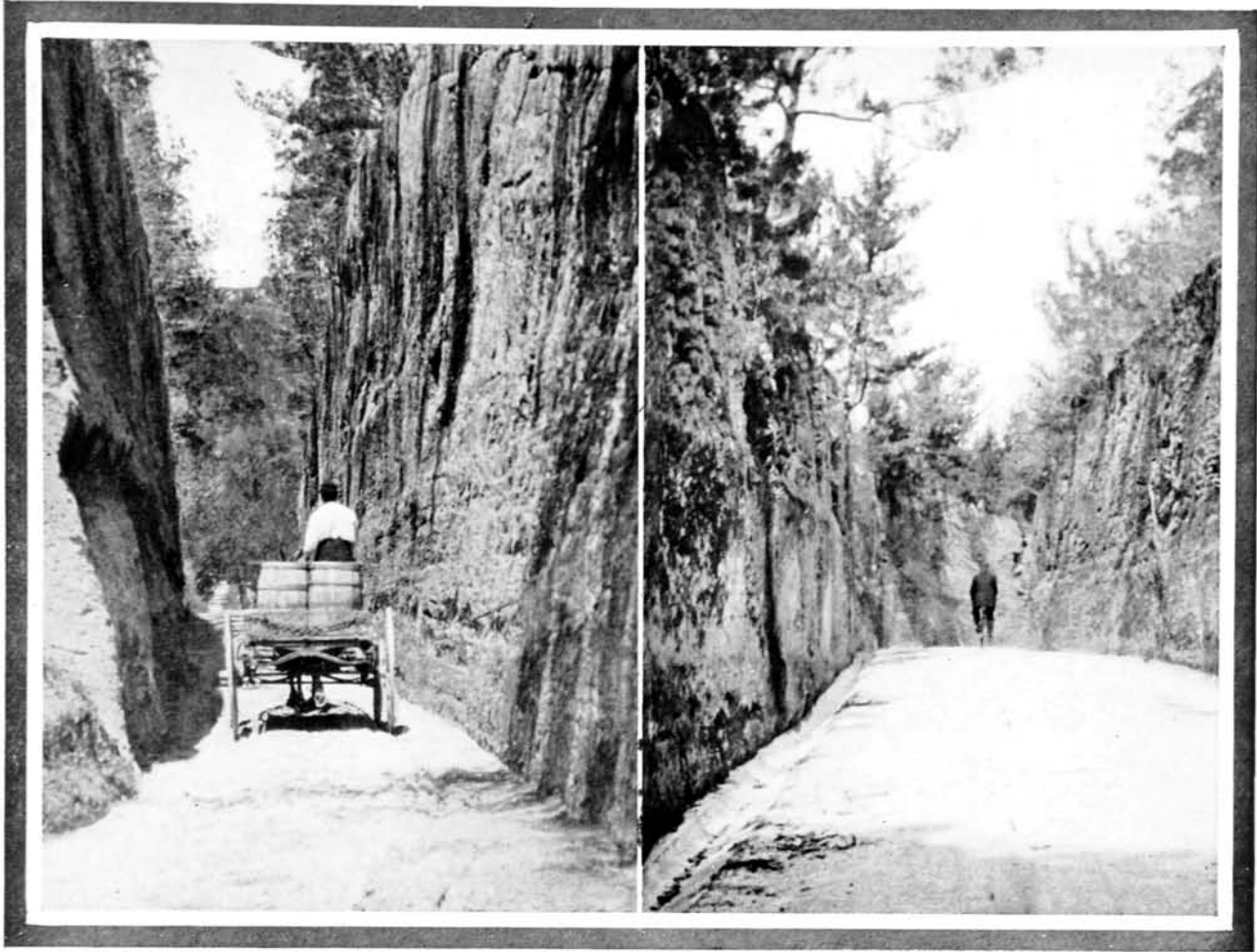
SOUTH SHORE  
ROAD

TEMPLE ROCK



### CORAL FORMATIONS ALONG THE SOUTH SHORE

When Compared With the Quiet Loveliness of Preceding Scenes, the Rugged Coral Rocks Along the South Shore Form a Vivid Contrast



KHYBER PASS

MT. LANGTON

These Roads Have Been Hewn Out of Solid Limestone and Illustrate Most Graphically, the Difficulties Which Have Been Overcome in Turning Cedar Covered Hills Into the World's Finest Highways

abiding, and only once in the last forty years has a capital crime been committed.

Bermuda is divided into nine parishes,—Sandys, which includes Somerset Island; Southampton, Warwick, Paget, Pembroke, Devonshire, Smith's and Hamilton, all occupying the main island, or Bermuda proper; and St. George's, which includes the island of St. David's. The City of Hamilton, the capital of Bermuda and seat of government, is situated in the central parish of Pembroke, and is built on the shores of a beautiful land-locked harbor. It is a prosperous community, with fine buildings, excellent shops, a cathedral, and a number of hotels. St. George's, the ancient capital, is situated on the island of that name. The harbor is extensive and the narrow winding streets and high-walled gardens give the town an old-world atmosphere.



A FREE SWING



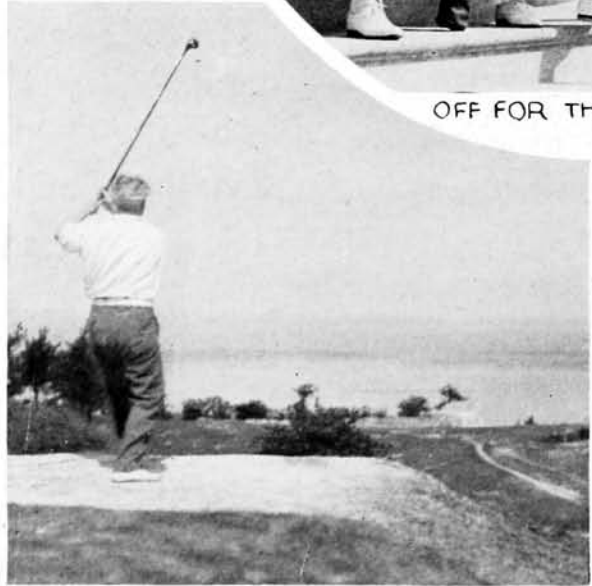
AN EXCITING PERIOD



A LONG DRIVE

CAREFUL PUTTING

OFF FOR THE GREENS



### GOLF AMID PICTURESQUE SURROUNDINGS

Think of Playing Golf All Year Round Under Conditions Such as These Shown Here.

# Attractions for the Tourist

ONE may lead a lazy life in Bermuda. It is the land of the lotus-eater. The sun is warm and seductive, the perfume of cedars and the hum of insects are in the air. Redbirds flit among the trees, piping their cheerful call; the sky is blue, flowers nod by the roadside, there are rainbow tints in the still water. Everything is tidy and clean—the roads, the houses, the people, their gardens. Nobody hurries. It is unnecessary, for there are no trains to catch, no motor cars to dodge. It is good to lounge in the sun, good to be alive and lazy.

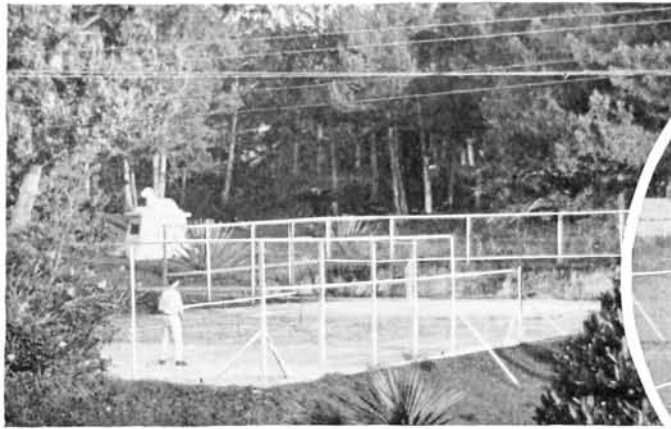
But Bermuda has many attractions, many points of interest, many sports and a climate that permits an outdoor life twelve months in the year. Suppose, for instance, one wishes to cover the islands in leisurely fashion,



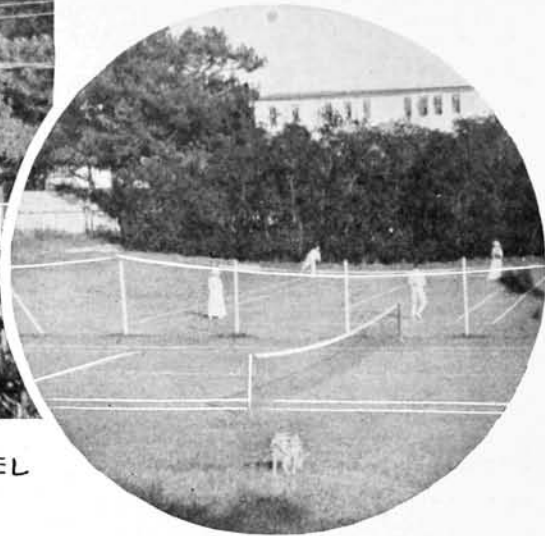
GOLF LINKS AT SPANISH POINT

The Wonderfully Stimulating Effect of Playing Golf Amid Such Delightful Surroundings Has an Appreciable Effect in the Value of One's Game

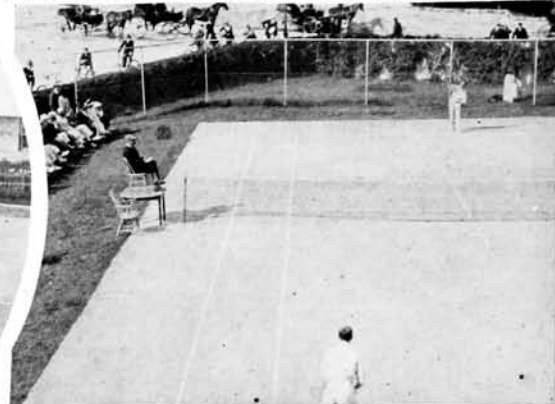
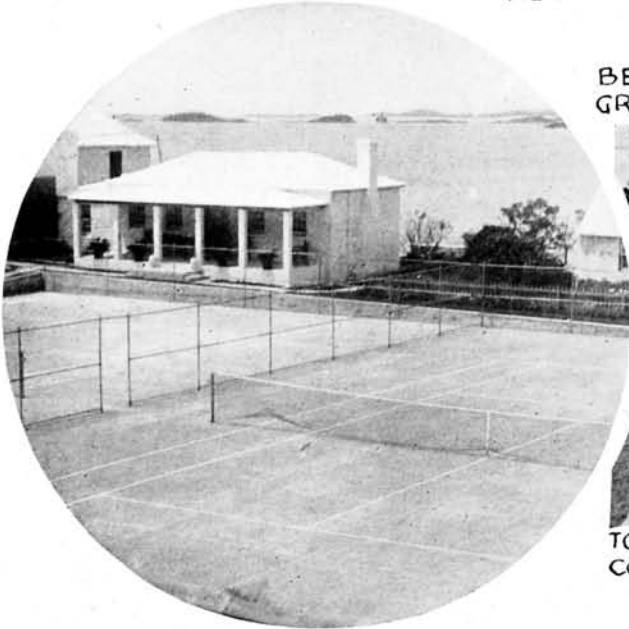




A COURT SURROUNDED BY STATELY SHADE TREES AT THE INVERURIE HOTEL

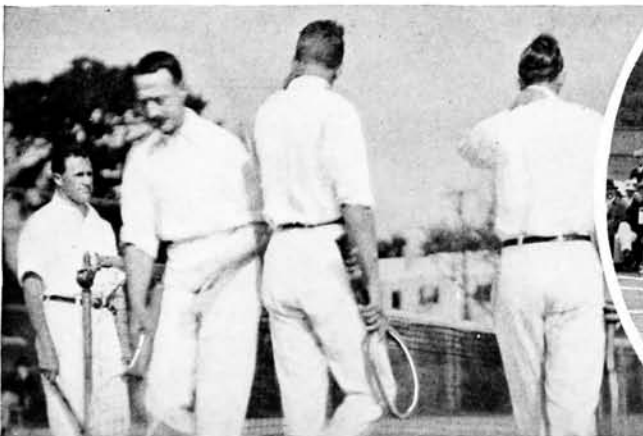


BEAUTIFUL SURROUNDINGS OF THE GRASS COURTS, ST GEORGES HOTEL

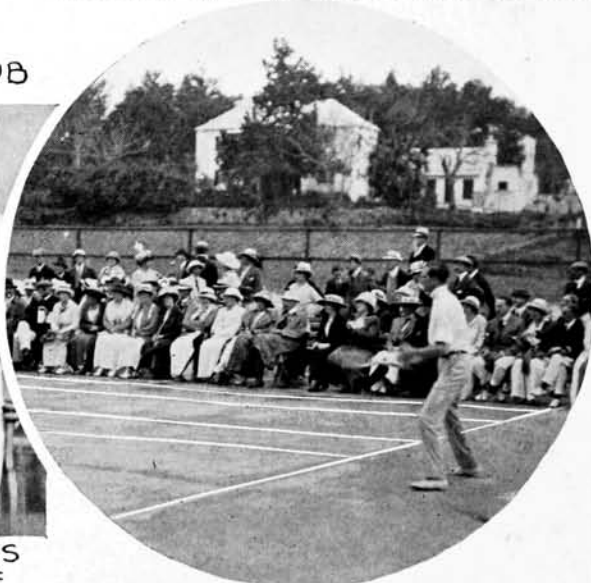


TOURNAMENT PLAY ON THE CEMENT COURTS OF THE PRINCESS HOTEL

COURTS OF PRIVATE TENNIS CLUB



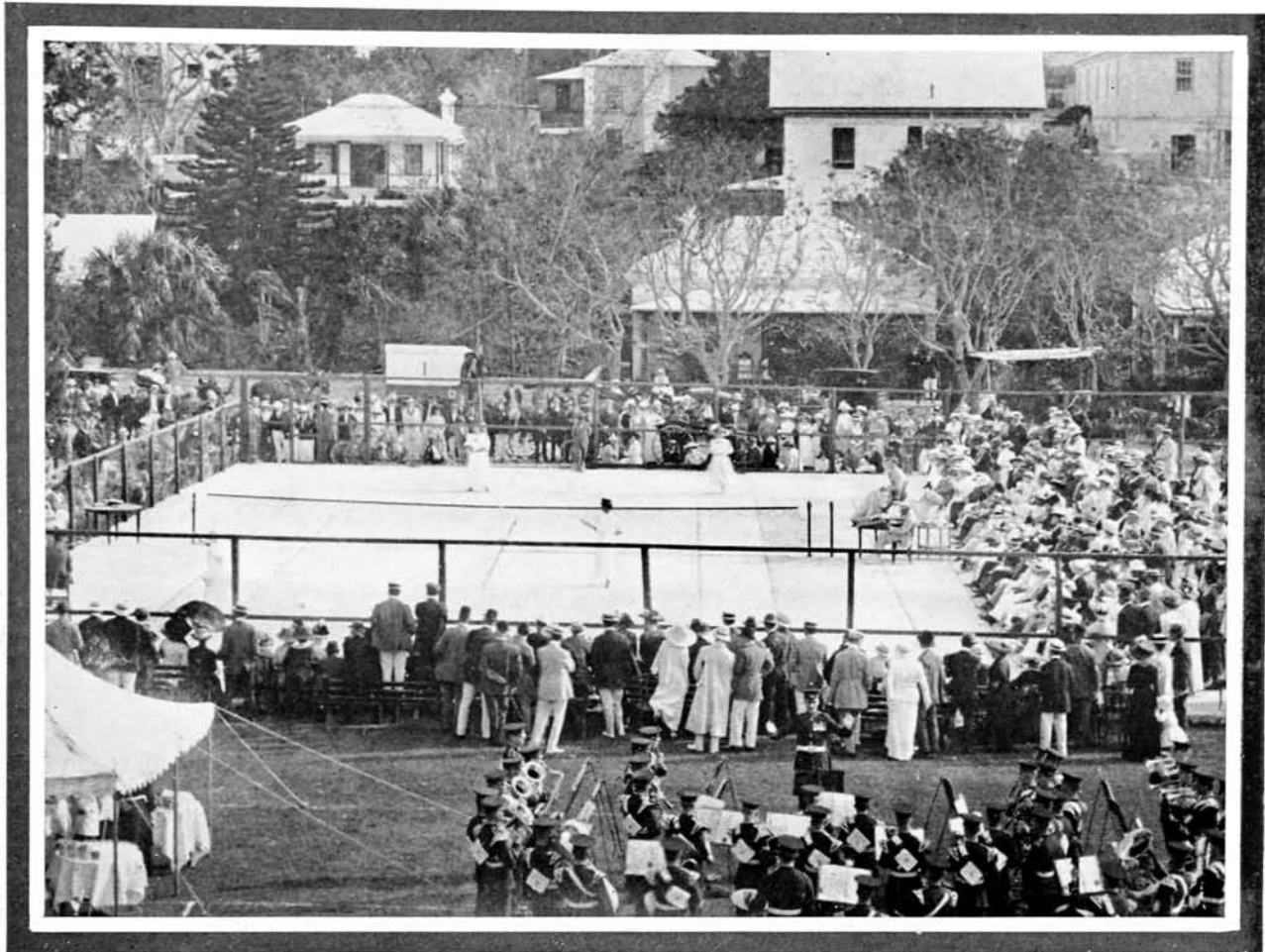
FINALISTS IN BERMUDA 1914 DOUBLES CHAMPIONSHIP- PLAYER AT EXTREME LEFT IS E. P. LARNARD, BROTHER OF W. R. LARNED, FAMOUS U. S. EX-CHAMPION.



INTERESTED SPECTATORS, BERMUDA CHAMPIONSHIP SINGLE TOURNAMENT.

**BERMUDA TENNIS COURTS WILL PLEASE THE MOST FASTIDIOUS**

Tennis is Played Everywhere in Bermuda, all of the Best Hotels Having Splendid Courts, Either of Cement, Clay or Grass and Many Prominent Players From the United States and Canada Compete



LADIES CHAMPIONSHIP DOUBLES TOURNAMENT ON THE HAMILTON HOTEL COURTS

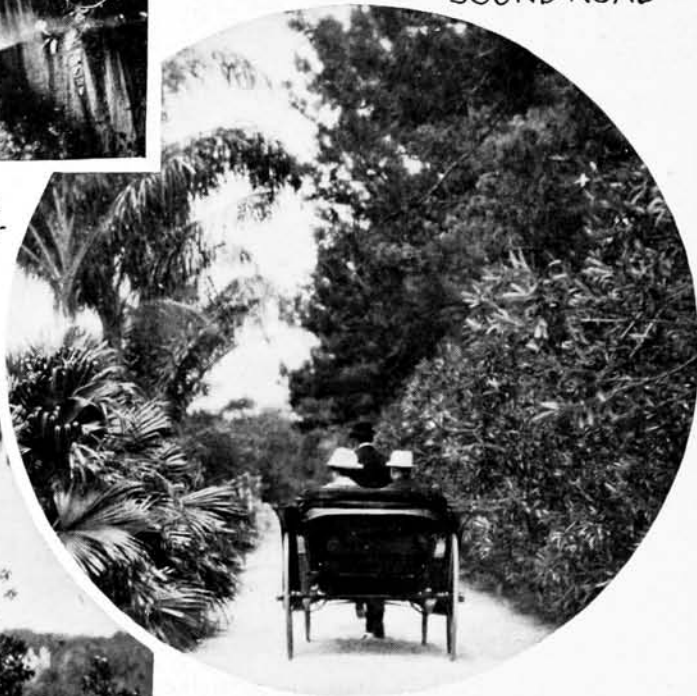
combining exercise with sightseeing. What better way than by bicycle? Bermuda has remained faithful to the wheel, which the native considers almost as useful as the horse and much more convenient when he has no impedimenta to carry. There are plenty of hills in Bermuda, but the wheels provided by the liveries are geared to climb them without waste of energy on the rider's part, and the roads are so smooth that riding is a delight. The tourist should remember, however, that the English rules of the road are the reverse of the American. Riders and drivers, in Bermuda, hold to the left instead of the right. Of course, there are many people who do not care to ride a wheel, and their sightseeing must be done in a carriage. The liveries provide clean comfortable carriages, splendid horses and intelligent polite drivers. The native driver is surprisingly well informed about the strange trees, flowers and birds encountered on the road; he is familiar with all localities, has an eye for beauty, and knows everyone. In whatever part of Bermuda the visitor may sojourn, he will find beautiful drives, not one alike. Over the hills, into the valleys, along the crests of rugged cliffs and the low shores of bays



OLEANDER DRIVEWAY - THE OLEANDER IS ONE OF THE MOST MAGNIFICENT OF BERMUDA'S FLORAL OFFERINGS



DRIVE ALONG HARRINGTON SOUND ROAD



DRIVE THROUGH THE PUBLIC GARDENS IN PAGET.



MANY OF THE ROADS ARE SHADED BY THE LONG ARMS OF WAVING PALM TREES

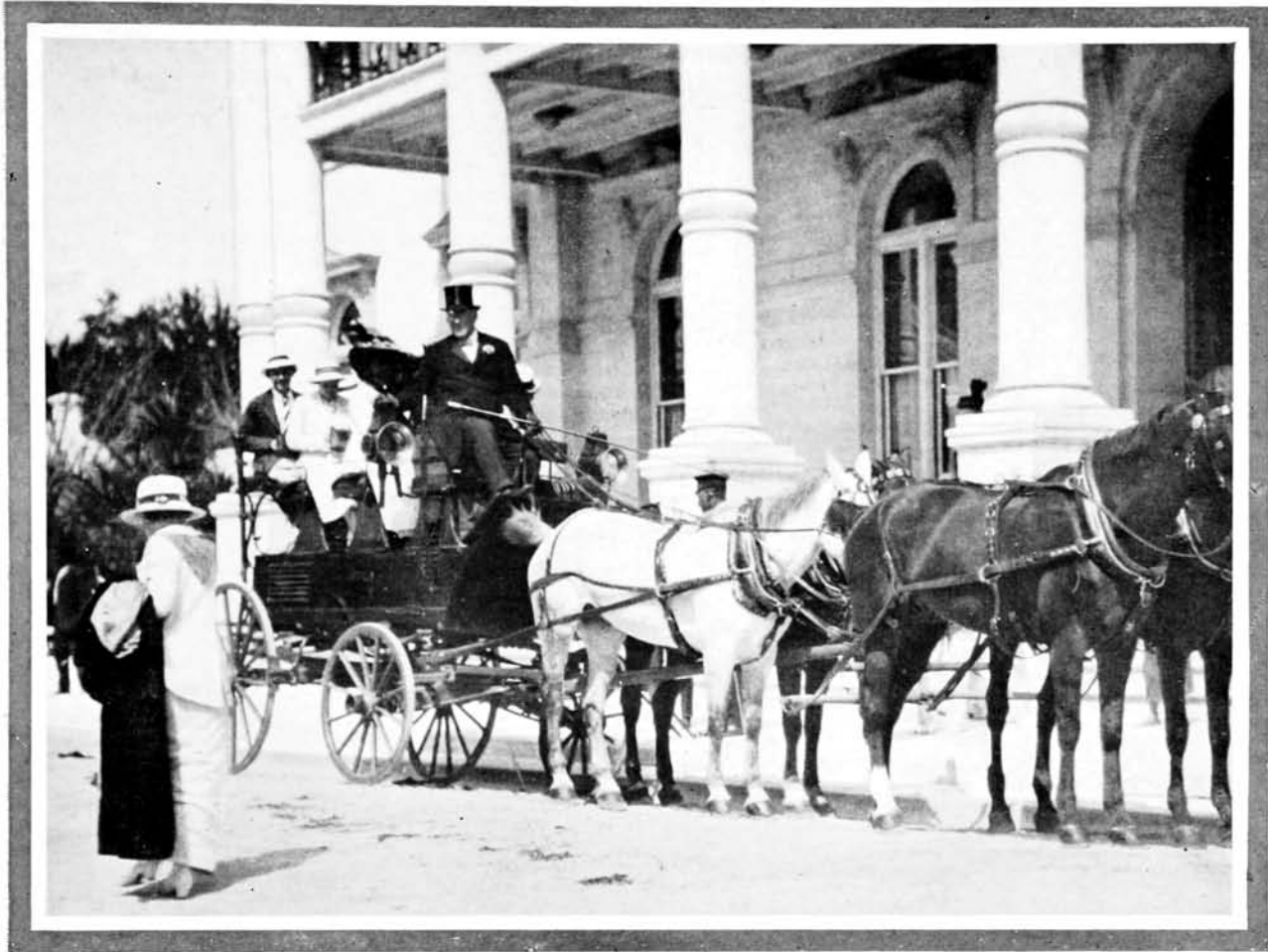


ANOTHER VIEW OF THE BEAUTIFUL DRIVE ALONG HARRINGTON SOUND ROAD

THE WORLD'S FINEST ROADWAYS MAKE DRIVING A DELIGHT

Picturesque Drives in Bermuda Are Enjoyed by Both Young and Old. The absence of Automobiles in Bermuda Gives a Further Sense of Security and Ease and Insures a Fuller Appreciation of the Beauties Unfolded





#### TALLYHO PARTY LEAVING HAMILTON HOTEL

Bermuda's Famous Coral Roads of Which There Are Over 100 Miles, Offer Unlimited Opportunity for Beautiful Drives and the Numerous Driving Parties Are Evidence of the Popularity of This Diversion

and lagoons, wind the coral roads. There is no monotony in the scenery. A rural picture with a white cottage, half concealed by a cedar grove, a banana patch, stone walls, and oleander hedges, changes rapidly to a panorama, in which hills and islands are mirrored in crystal waters. Or one's driver may choose a road rimmed by beaches, sand dunes, and cliffs, with surf breaking over the reefs and atolls in the foreground. The long hard beaches on the south shore attract many people who take their daily exercise astride a horse. Riding is popular among the winter visitors, and good mounts are provided by the hotels and liverys. Followers of tennis and golf should not leave their rackets and clubs at home when they start out for Bermuda. Aside from the courts attached to the larger hotels, there are private tennis clubs, and two golf links, one at Hamilton, the other at St. George's. Cricket, of course, is the chief native game and baseball and football also have their devotees.

Water sports are without question the most attractive that Bermuda





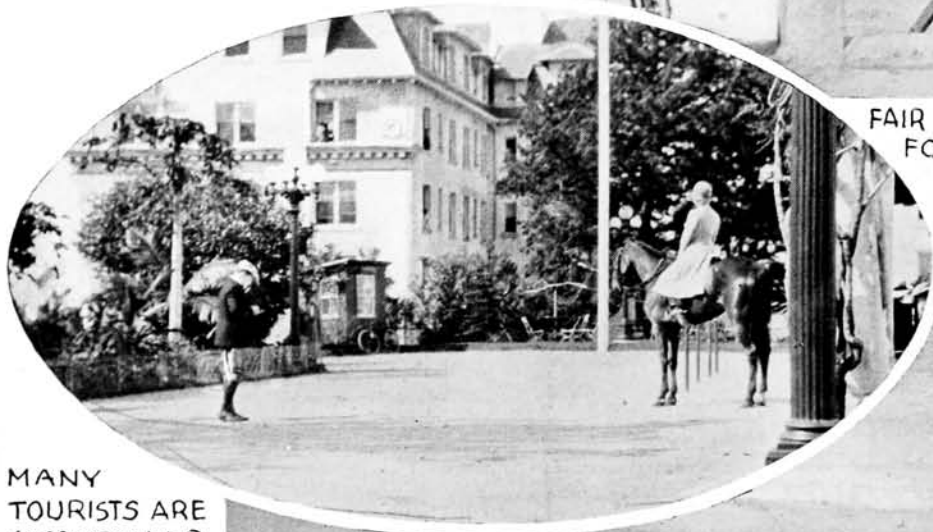
THE BICYCLE OFFERS A HANDY MEANS OF TRANSPORTATION IN TOWN



A CANTER ALONG SHADED ROADS



FAIR CYCLIST WAITING FOR THE FERRY



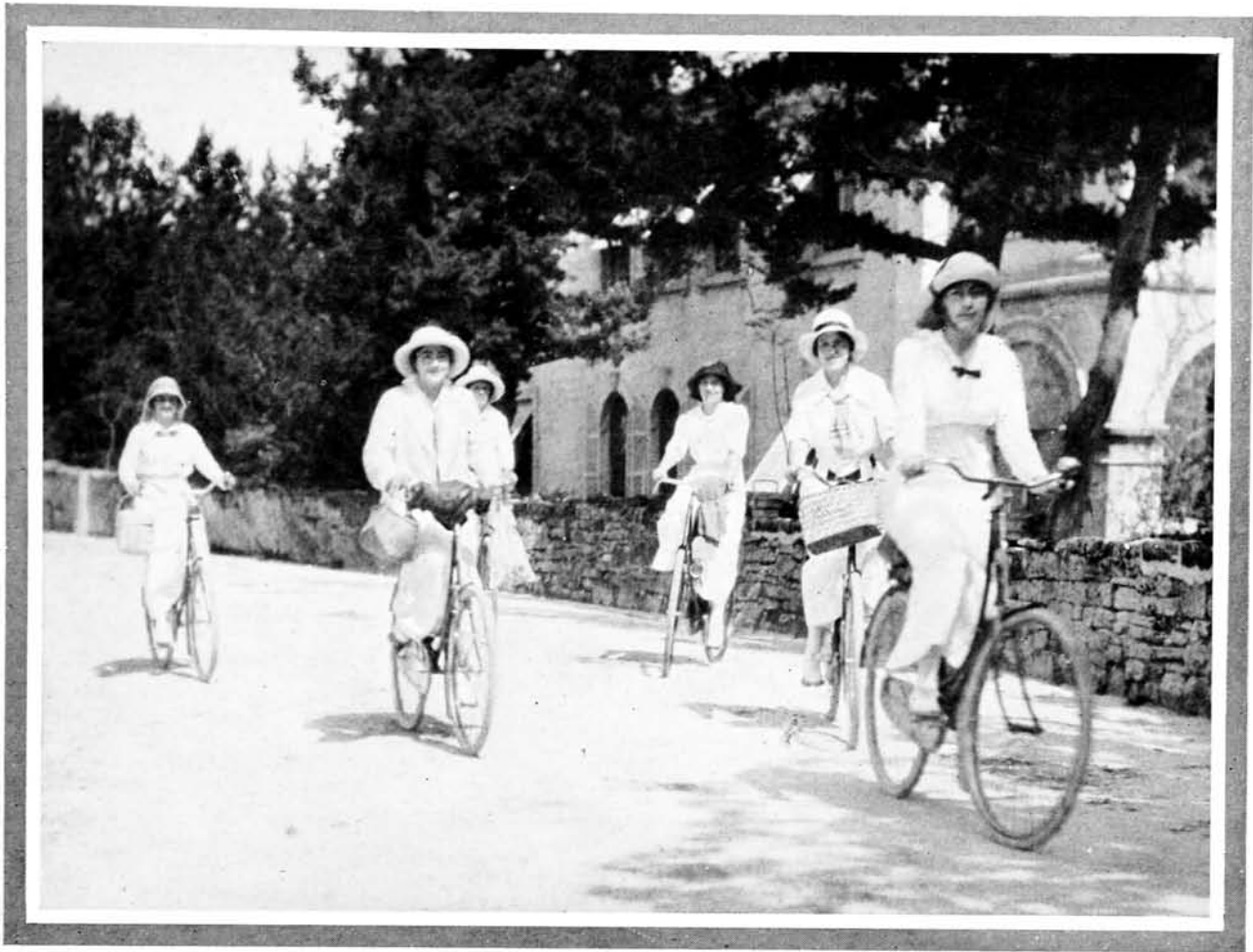
MANY TOURISTS ARE ACCOMPANIED BY THEIR FAVORITE MOUNTS



HORSEBACK RIDING ALONG BEAUTIFUL ELBA BEACH

CYCLING AND HORSE-BACK RIDING ARE POPULAR RECREATIONS

Whether On Shore, Country Road or In Town There are Few Places in Bermuda Which are Inaccessible to the Lovers of Cycling or Horse-Back Riding



A BEVY OF GIRL CYCLISTS BEARING LUNCH BASKETS FOR A DAY'S PICNIC IN THE PERFUMED CEDAR HILLS

offers, because of the ideal conditions for boating, bathing and fishing. The ancestors of the present generation of Bermudians, white and colored alike, were sea-faring people, and the spirit of the sea permeates their descendants. This spirit promptly grips the visitor who has the slightest desire to set foot in a boat. With a native pilot—he is always necessary—to pick a channel through the shoals, one may spend days in navigating the sounds and harbors, exploring the numerous islets, and visiting headlands and bays that are not accessible by road. Although Bermuda is small it cannot be thoroughly seen in a month or even a year, and every sailing excursion may have a new objective. The old native custom of loading a boat with provisions and cooking utensils and taking a party of guests to a secluded spot, where strangers cannot intrude, has genuine merit and the northern visitor who joins one of these picnics is indeed fortunate. In fact, he will always be ready to go again. There are numerous yacht clubs in Bermuda and races are held frequently through the year for the entertainment of visitors. The most picturesque form



A FEW OF THE VARIOUS TYPES OF SAIL BOATS



CANOEING UNDER IDEAL CONDITIONS



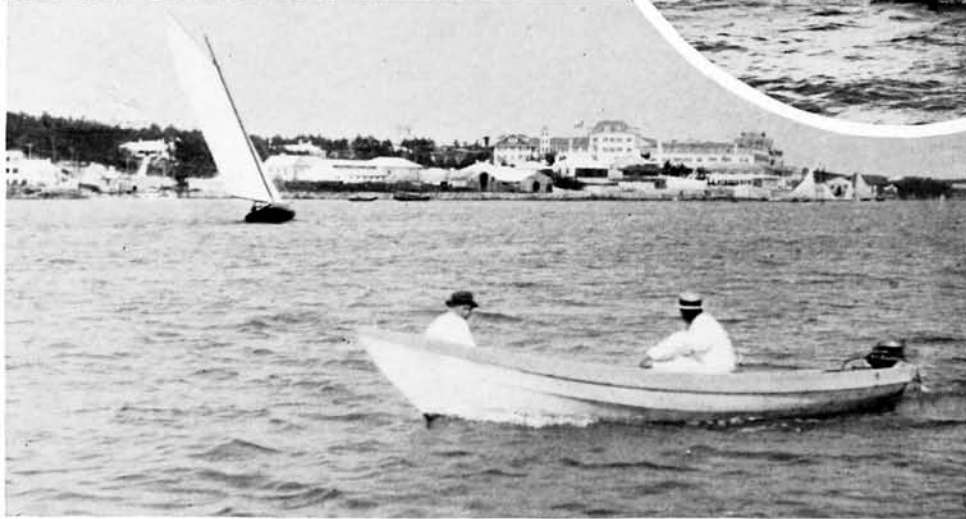
MOTOR BOATING IN LUXURIOUS CRUISERS



THE TRANSPARENT CLEARNESS OF THE WATER GIVES AN ADDED PLEASURE TO SAILING



A BERMUDA DINGHY

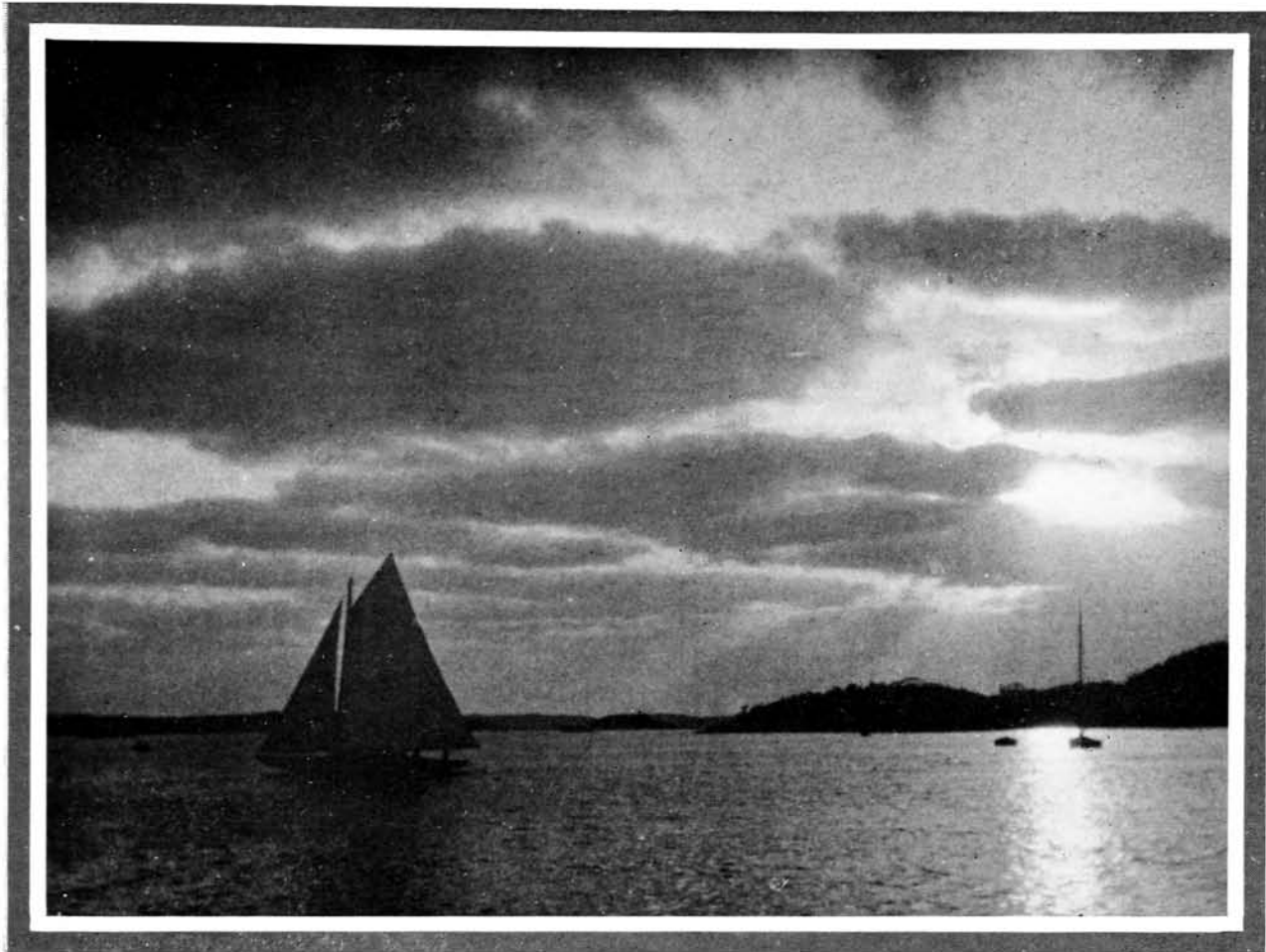


SHELTERED HARBORS AND BAYS MAKE ROWING A SAFE PASTIME

### A PARADISE FOR WATER CRAFT OF ALL TYPES

Whether Rowing, Canoeing, Sailing or Motor-boating, One May Here Find Endless Opportunity for Sport Among the 100 Odd Islands Which Form This Fairyland of Nature





SAILING BY MOONLIGHT WHERE A PHOSPHORESCENT SEA LAPS A CORAL STRAND

of racing is that in which the dinghies take part. These tiny open boats carry an enormous sailspread, travel, half-smothered in foam and water, at an amazing rate of speed, and very often capsize and sink in a race. Their leg-of-mutton rig is peculiar to Bermuda. If one prefers to cover distances in a brief period, there are motorboats, and for the visitor with ample time and a desire to harden his muscles there are rowboats and canoes. Moonlight canoeing, on a still evening, with phosphorescent water dripping silver from the paddle, is romantic enough to stir young blood, and it is not necessary to account for the popularity of this pastime. Something has been said about the beauty of Bermuda water. From the bather's point of view, it has more virtues than beauty. It is perfectly clean, without floating debris; it is unusually salt and buoyant. Bermudians say without reserve that they offer the best bathing in the Atlantic. One's preference for still-water or surf bathing may be gratified. In either case the bather may swim in safety, for Bermuda waters are not infested with sharks, neither is there a heavy undertow. The translucent water is responsible for a diversion that carries the visitor to the coral





DISPORTING IN THE BATHING POOL



BATHING PAVILLON AT ELBA BEACH



DIVING FROM THE SPRING BOARD



ELBA BEACH THE FAVORITE BATHING BEACH

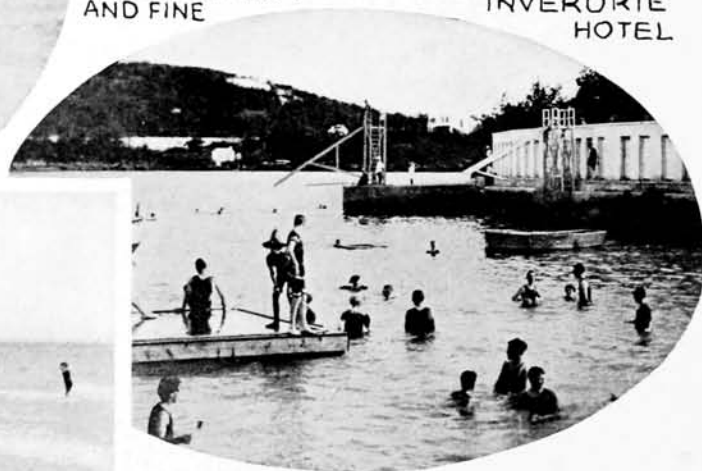
THE ROSE TINTED CORAL SAND IS AMAZINGLY SOFT AND FINE



ON THE FLOAT AT THE INVERURIE HOTEL



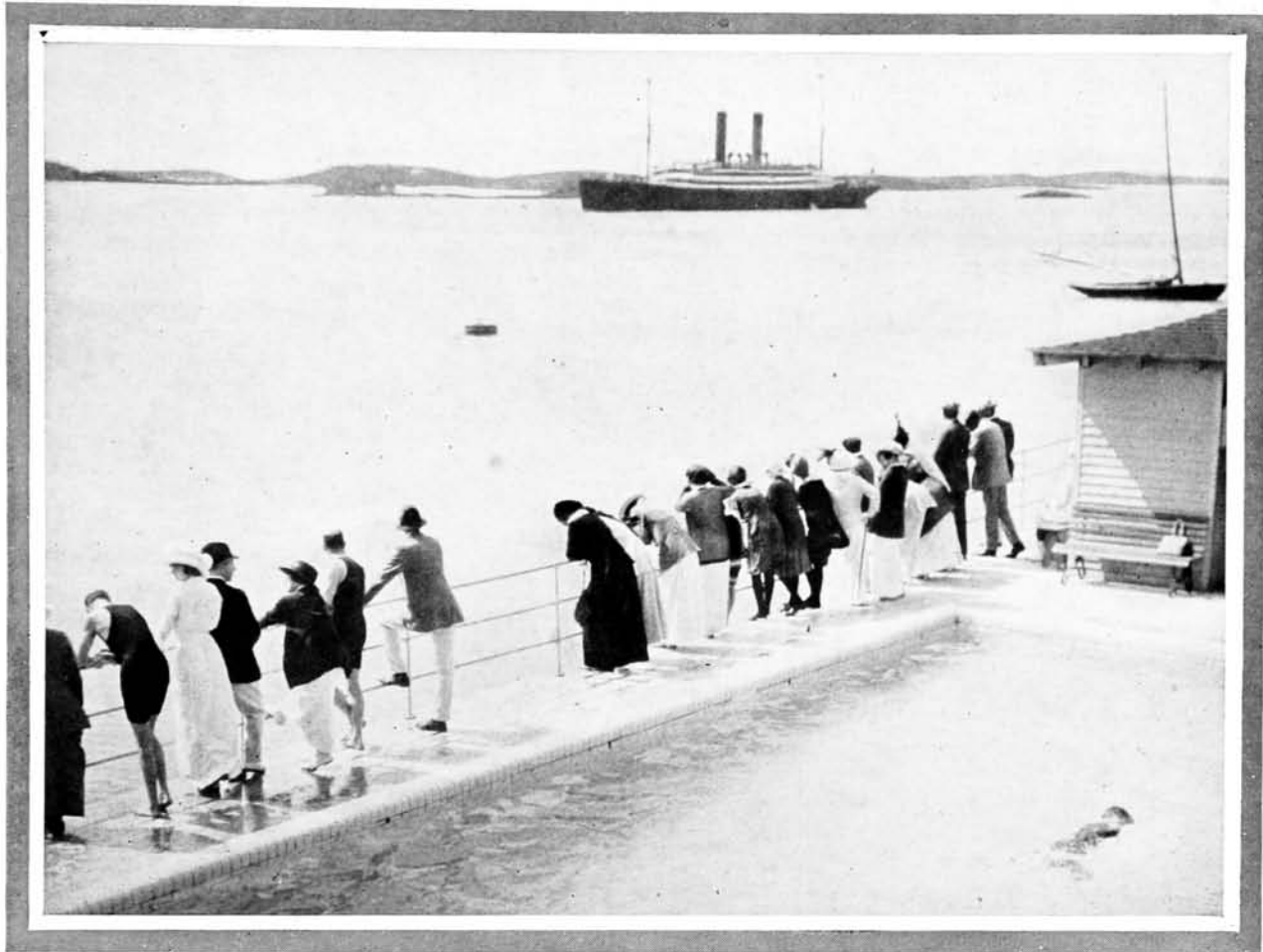
BATHING AT ELBA BEACH ON THE SOUTH SHORE



BATHING AT THE ISLE OF WHITE

**BATHING AT BEACHES OR IN SHELTERED HARBORS AND BAYS**

There is Bathing at all Seasons of the Year. It Is No Uncommon Sight to See a Merry Crowd of Visitors Indulging In a Morning Dip In the Month of January When Many Sections of the United States Are Enveloped In Zero Weather



BATHING POOL AT THE PRINCESS HOTEL

Still Water Bathing Has Its Advocates and the Beautiful Tiled Bathing Pool at the Princess Hotel Overlooking Hamilton Harbor Offers Ample Opportunity to Indulge One's Taste In This Direction

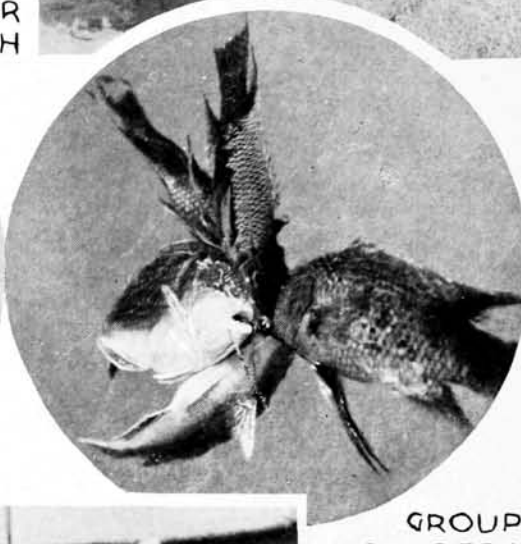
reefs, which are covered with marine growth in gorgeous colors. Over these famous sea gardens, as they are called, one drifts in a glass bottomed boat, and watches the gentle movement of sea fans, weeds and variegated anenomes, and sees also the star and finger coral, brainstones, sea eggs, and puddings, not to speak of many fishes, which change their colors to correspond with their momentary environment. All this is observed plainly 30 to 40 feet below the surface. Bermuda's sea gardens rival and sometimes exceed in beauty those on land. Around the reefs, too, are fishing grounds, and it is profitable for the visiting angler to try his luck, with a native fisherman as guide and mentor. Hand lines are used almost exclusively, and fishing parties engage either a heavy open boat with a sail, or a sloop fitted with a well for preserving the catch alive. The rockfish, the dean of Bermuda waters, is powerful and heavy, sometimes running to 100 pounds in weight, and it takes the hook readily. It is a gamy fish and the same may be said for the amberfish, hogfish, porgy, bream and snapper. Other fish that are esteemed for the table



A CATCH BY AN AMATEUR ANGLER



NATIVE FISHERMEN GOING TO TOWN TO SELL THEIR CATCH



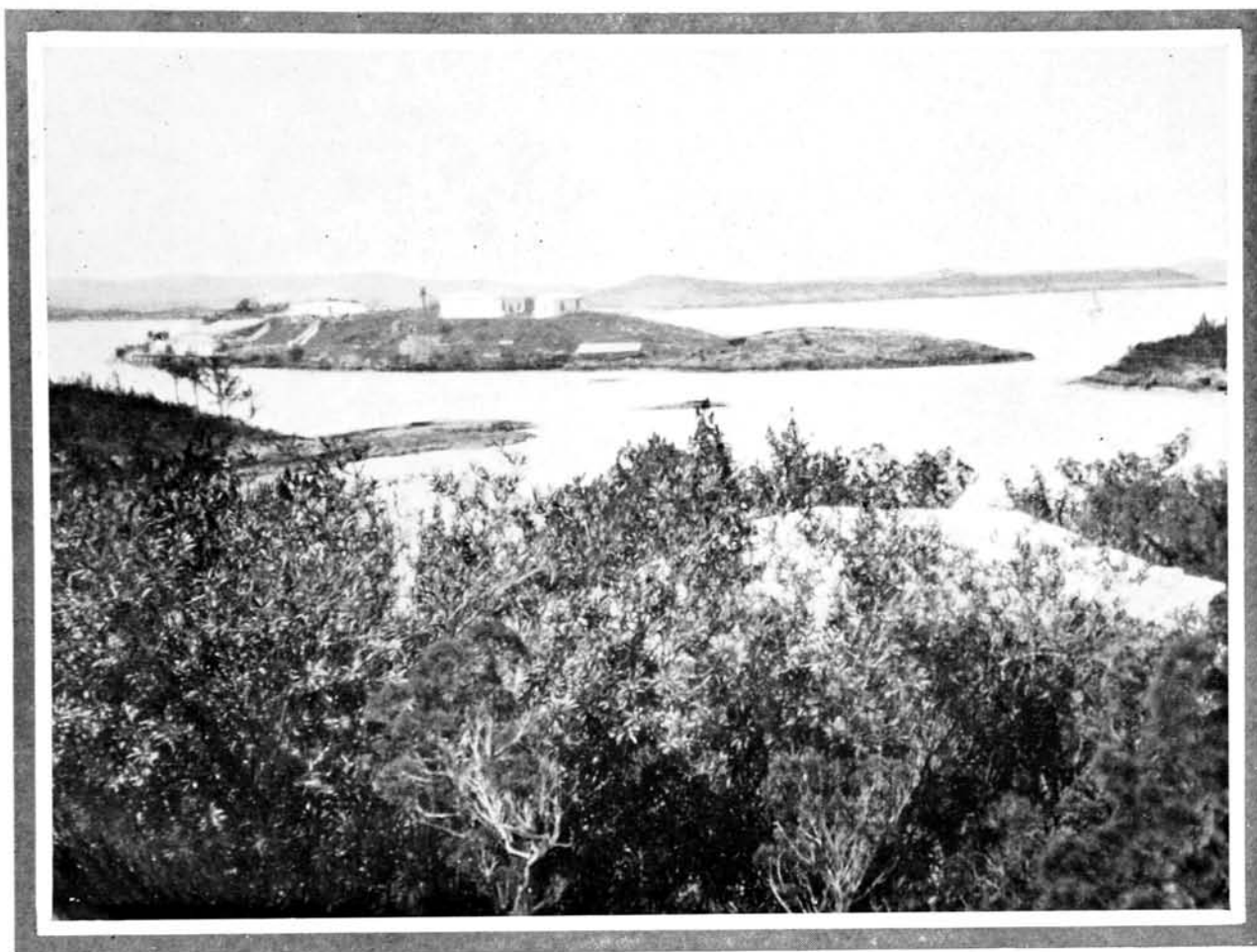
GROUPS OF FRESHLY CAUGHT FISH



FISHERMEN HAULING IN THEIR NETS

### FISHING THAT'S FIT FOR KINGS

296 Species of Fish May Be Caught In the Waters of Bermuda. This Rich Array Offers Sport Aplenty to the Fisherman Who Wishes to Practice His Art



#### THE AQUARIUM AT AGAR'S ISLAND

There Is a Genuine Treat In Store For Those Who Visit the Aquarium at Agar's Island. Here Will Be Found Specimens of the Wonderfully Formed and Beautifully Marked Fish Which Inhabit the Waters of Bermuda,

are the angel-fish, moray, bonito, silk snapper, mackerel, gwelly, and yellow tail. The wealth of Bermuda's fishing resources is indicated by the fact that 296 species of fish are known to exist, and good sport is assured the angler who goes to the reefs. There is excellent fishing from the rocks at many points along the coast, and even the harbors and lagoons are well stocked with fish of respectable size.

Every visitor goes to see the caves in the Walsingham district, where Tom Moore, bard of Erin and Bermuda, too, was wont to wander in bygone days. Beneath the hills are famous grottos, with deep, silent pools, islands and walls of glistening calcite, groups of artistic columns, translucent draperies, myriads of tapering stalactites and stalagmites, and many other curious formations that arrest the eye by their imagery. There is nothing more unique in Bermuda than this strange creation of lime and water many feet below the flowers and trees. The caves are





THE CRYSTAL FORMATIONS ARE BEAUTIFULLY TINTED AND GLISTEN LIKE DIAMONDS



HEAVY MASSES OF CRYSTAL STALACTITES IN CAVES



STEAMER CARRYING VISITORS OUT TO THE SEA GARDENS



TOURISTS IN GLASS BOTTOMED BOAT GAZING AT THE FLOOR OF THE OCEAN 30 TO 40 FEET BELOW



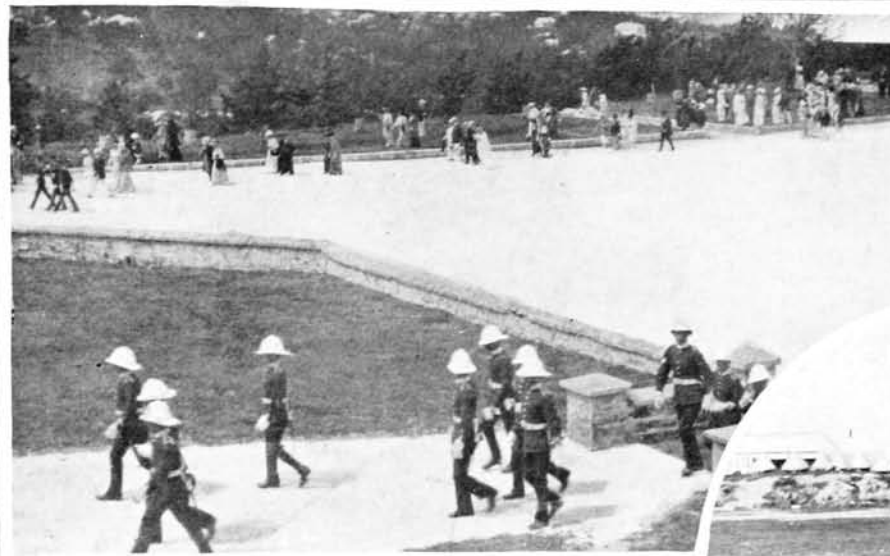
LACE LIKE CRYSTAL STALACTITES IN CAVES



INTERIOR OF GLASS BOTTOMED BOAT USED FOR VIEWING MARVELS OF THE SEA GARDENS

**BERMUDA'S CAVES AND SEA-GARDENS—MARVELOUS WORKS OF NATURE**

Bermuda's Wonderful Caves and Sea-Gardens Have Been Centuries In Reaching Their Present State of Development and the Marvels They Contain Surprise Both Tourist and Scientist



PART OF THE  
MILITARY FORCE  
AND VISITORS  
AT PROSPECT

MILITARY CRICKET  
FIELD - ST. GEORGES



SOLDIERS  
ON PARADE AT PROSPECT



CONCERT BY THE MILITARY BAND  
AT VICTORIA PARK HAMILTON

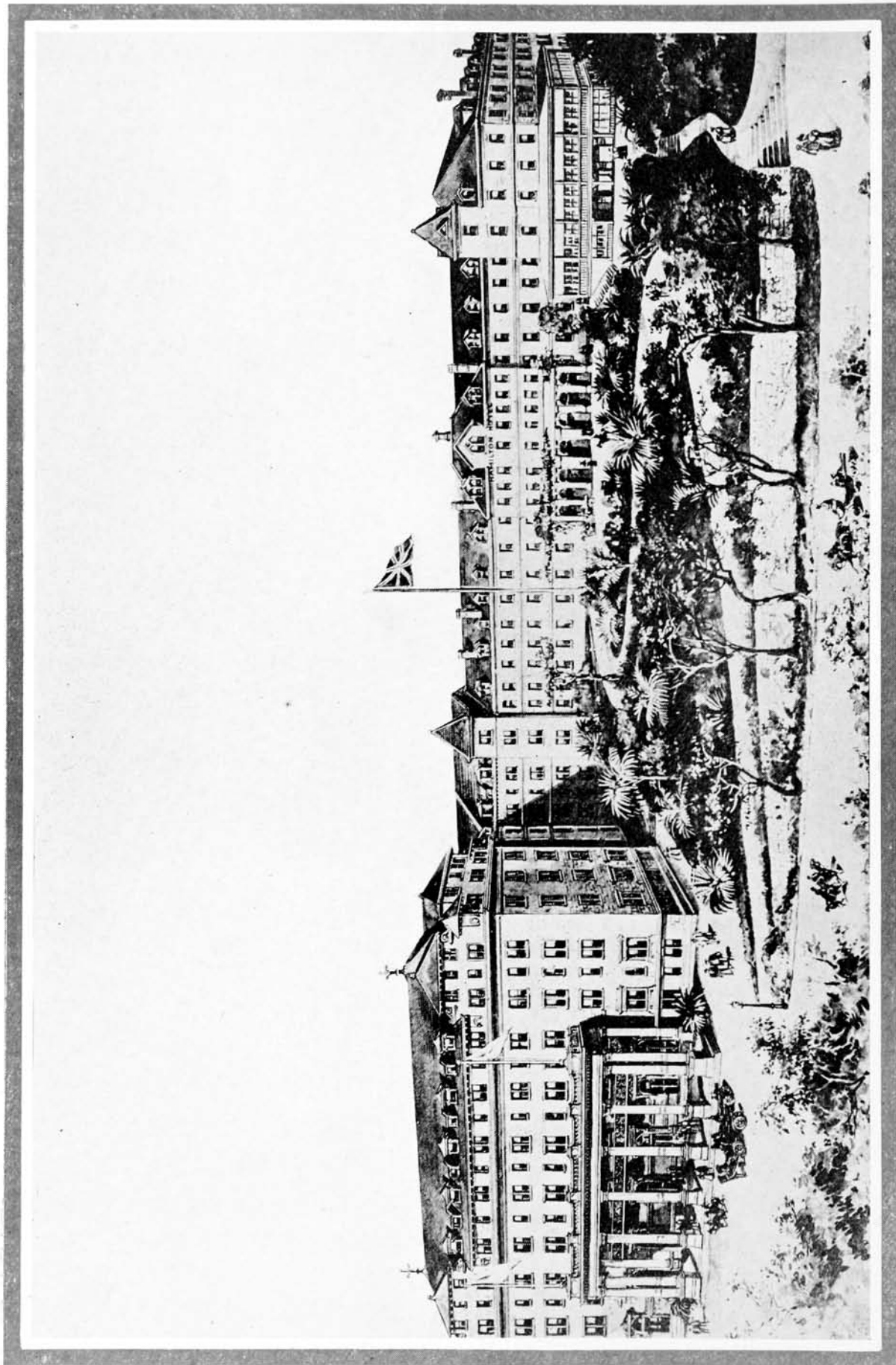


MILITARY BAND CONCERT AT PROSPECT

PARADE GROUNDS AT PROSPECT AND SOME OF THE DIVERSIONS OF THE  
MILITARY FORCES AT BERMUDA

The Concerts Given In the Public Parks by the Regimental Bands Are of a High Order and Appeal to the Public Generally

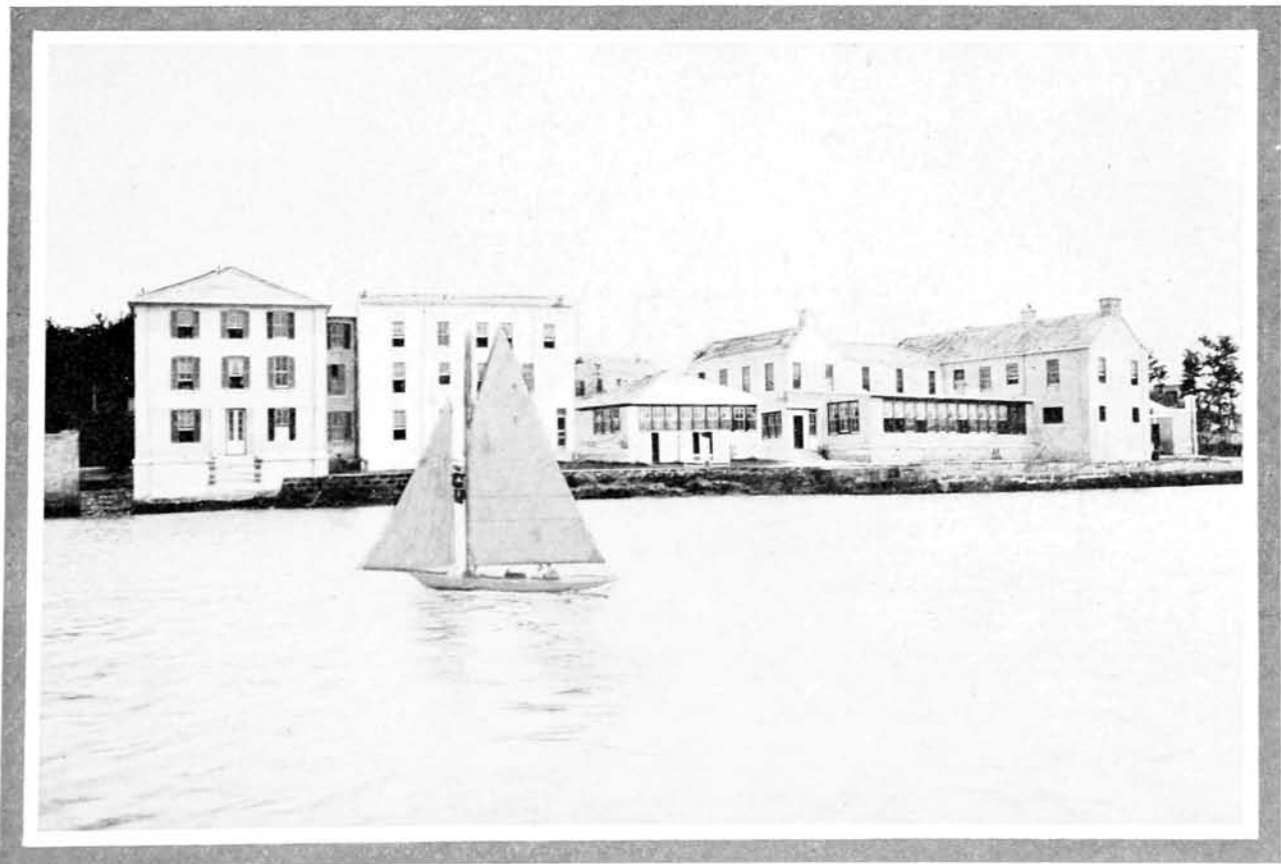
Fairy-like scenes. A number of Americans and Canadians have permanent homes in Bermuda which they occupy regularly for a large part of each year, and with the wealthier class of Bermudians, entertain generously, while concerts, dancing and theatricals enliven the evenings at the prominent hotels. Aside from the tourists who look for entertainment and rest alone, Bermuda is visited by artists, writers and scientists, the latter especially finding the island a fertile field for the study of coral formation, biology and botany.



THE HAMILTON HOTEL, HAMILTON

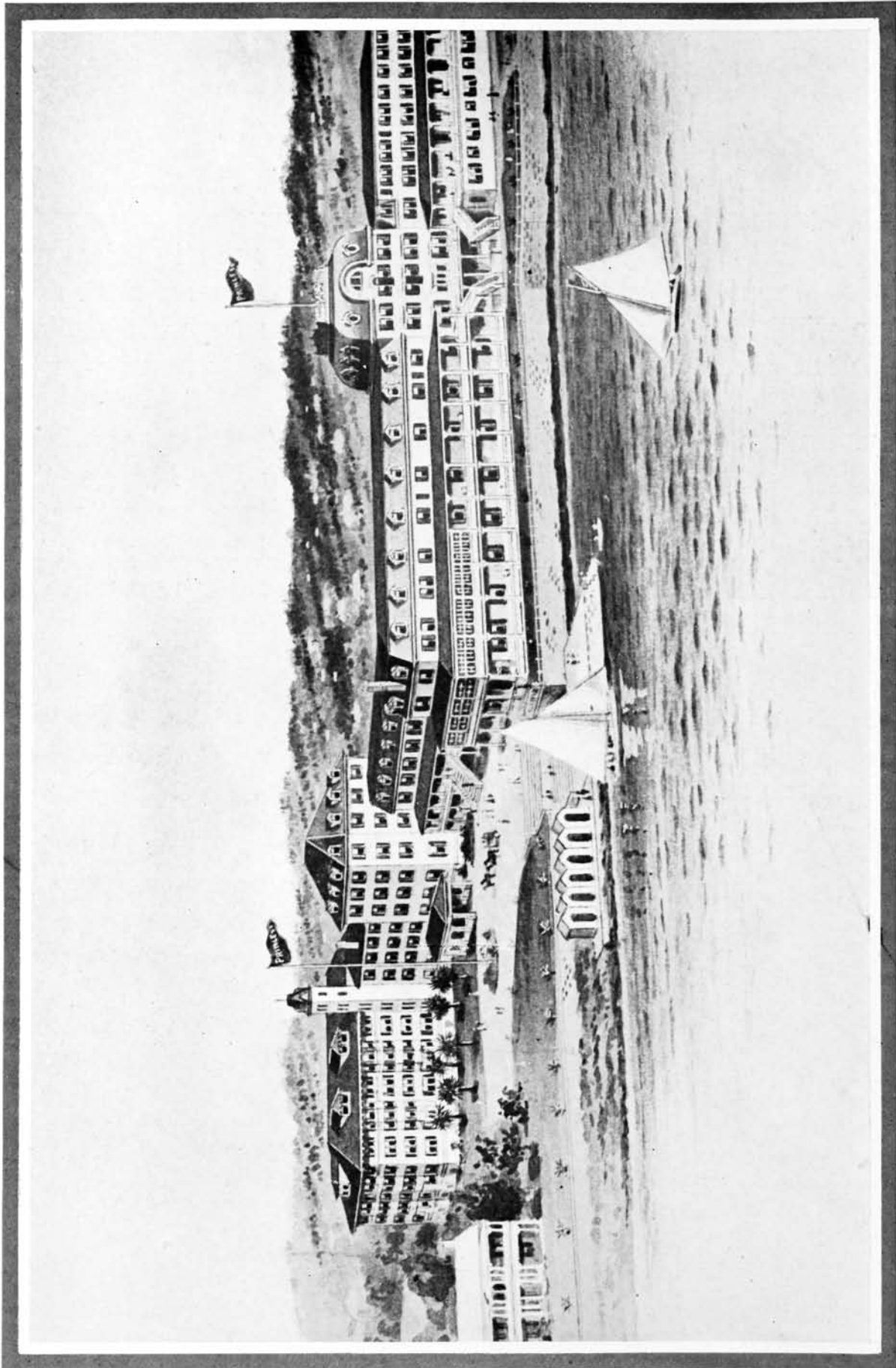
# Hotel and Steamship Facilities

VISITORS of all tastes can find in Bermuda exactly what they desire in the way of hotels and boarding houses, with wholesome food, bright airy rooms, comfortable beds, and all modern conveniences, including electric light. They also have the use of a telephone system which covers all parts of the colony. The largest hotels have private telephones and heating plants and the smaller have open fire places. Artificial heat, however, is rarely necessary. Visitors who desire gaiety, dancing, and contact with numbers of people naturally go to the larger hotels; those who seek seclusion or a quieter mode of life go to the smaller hotels and the boarding houses. Boarding places are scattered all over the islands. Some are situated in Hamilton and St. George's, others are in the country districts or on the seashore. All are convenient to the main lines of travel and to the bathing beaches. Of course, every boarding house and hotel has its flower garden, many have tennis courts and

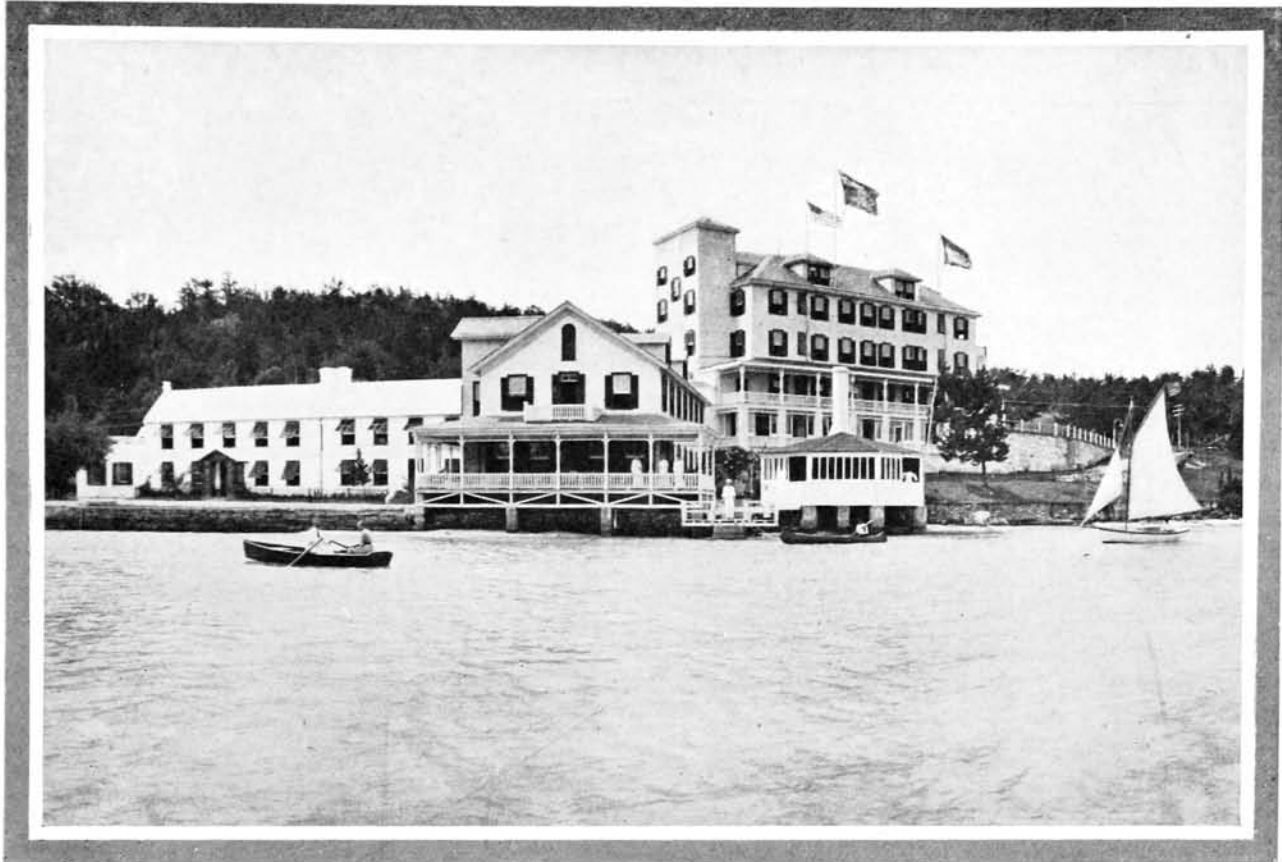


THE HOTEL INVERURIE AND COTTAGES, PAGET





THE PRINCESS HOTEL, HAMILTON



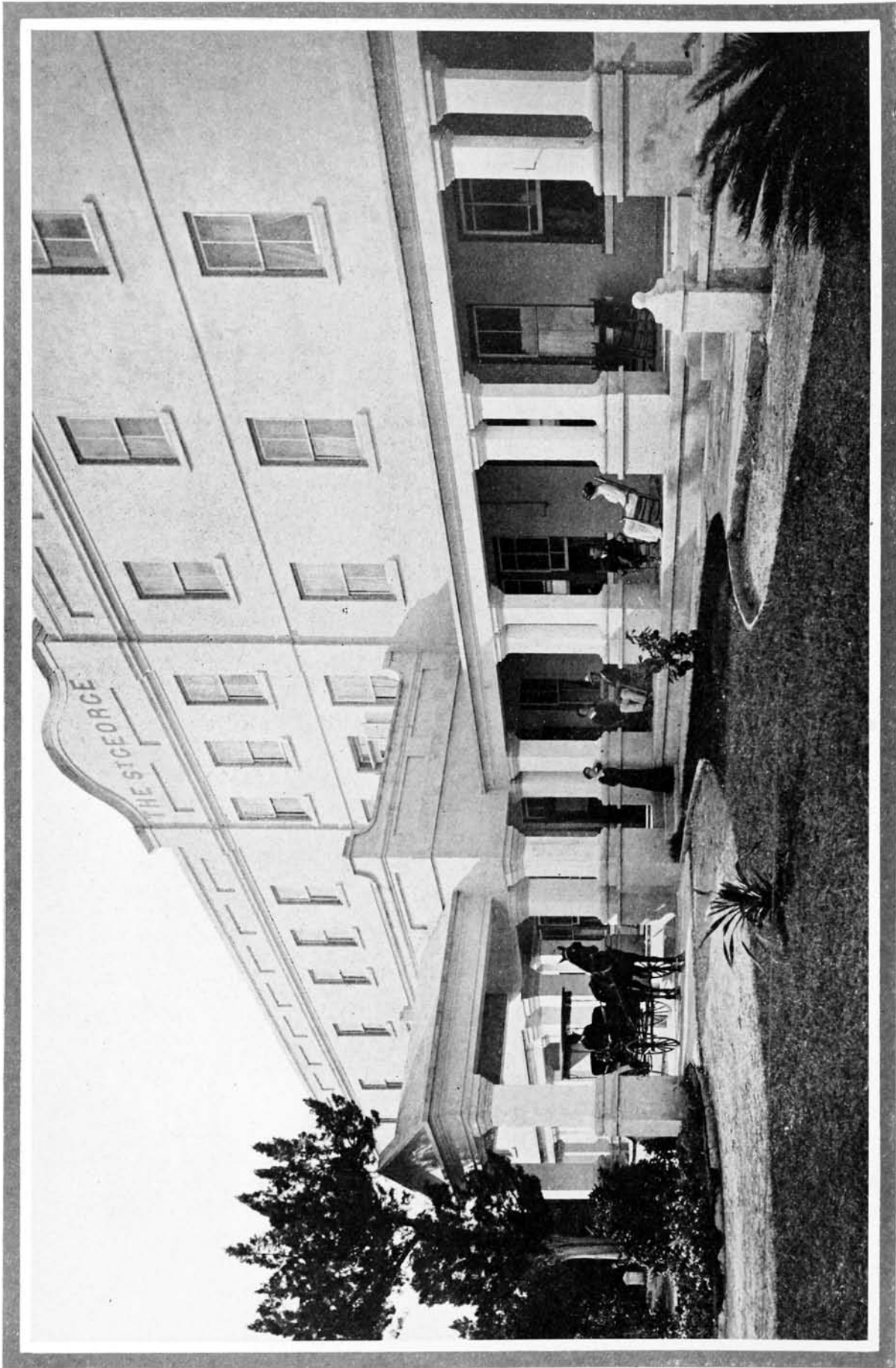
THE HOTEL FRASCATI, HAMILTON PARISH

vegetable gardens, from which they draw table supplies. Rates for board are somewhat lower in Summer than in Winter, and as the largest hotels cater to a class of people who ordinarily go to Europe in Summer, they are generally closed during that season.

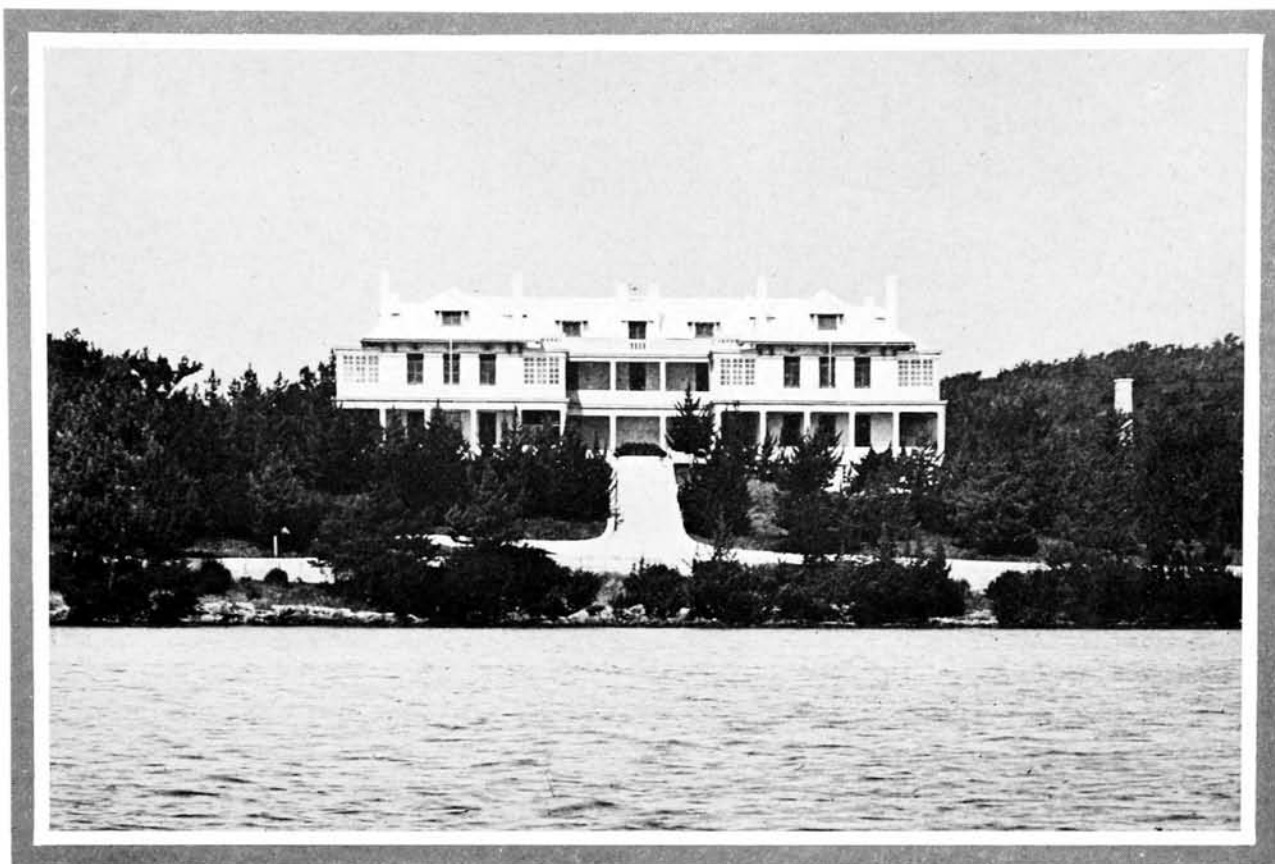
Below is given a list of Bermuda hotels and boarding houses, with figures covering rates and accommodations. Furnished houses may be rented for various periods of time and the names of responsible real estate agents will be furnished by The Bermuda Trade Development Board.

## BERMUDA HOTELS AND BOARDING HOUSES

PARISH	RATE PER DAY	RATE PER WEEK	GUESTS
<i>City of Hamilton (Pembroke Parish)</i>			
Hamilton Hotel .....	\$4.00	\$25 00 up	600
Princess Hotel.....	4.00	25.00 up	400
American House .....	3.00	Appl'cn	120
New Windsor Hotel.....	(\$1.50 per day and up.—European plan only.)		100
Kenwood Hotel.....	3.00	21.00 up	100
Imperial Hotel. ....	3.00	21.00 up	75
Colonial Hotel.....	3.00	Appl'cn	75
Point Pleasant Hotel .....	3.00	20.00 up	60
Eagle's Nest Hotel.....	3.00	18.00 up	60
Cedarhurst.....	2.50	14.00 up	50



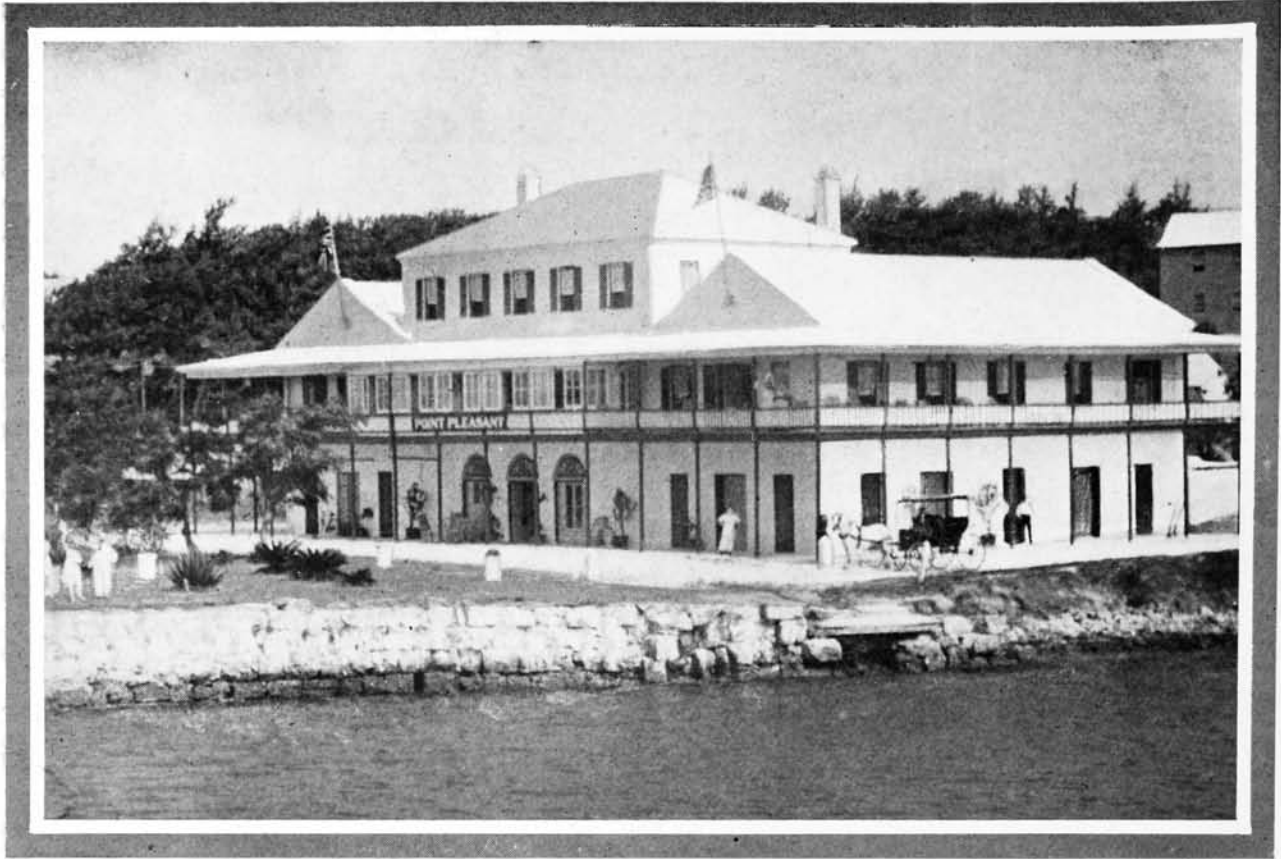
THE ST. GEORGE HOTEL, ST. GEORGE



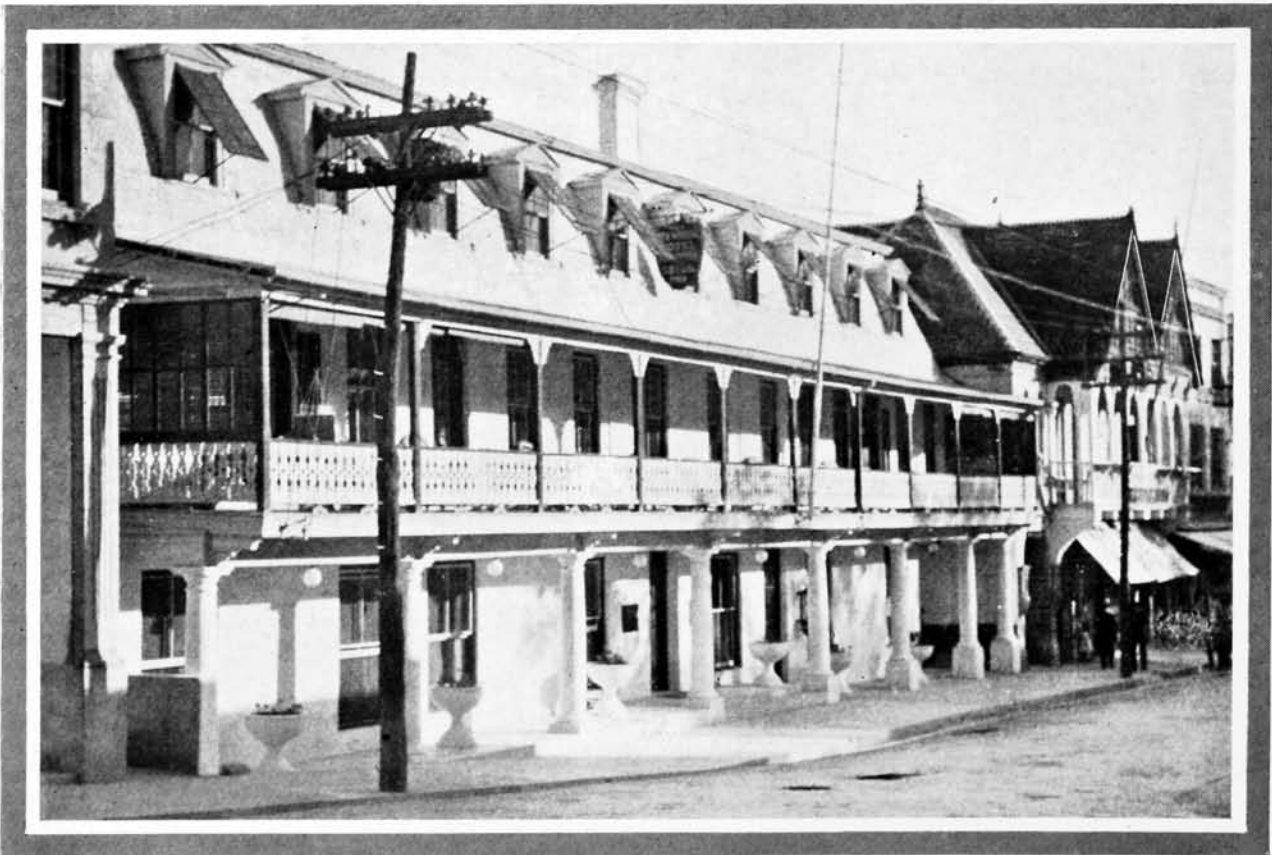
THE SHORE HILLS HOTEL, ST. GEORGE

<i>PARISH—City of Hamilton (Continued)</i>	<i>RATE PER DAY</i>	<i>RATE PER WEEK</i>	<i>GUESTS</i>
Allenhurst .....	2.00	12.00 up	50
Victoria Lodge .....	2.50	15.00 up	40
Washington House.....	2.00	12.00 up	40
Brunswick House .....	2.00	12.00 up	42
Isle of White .....	2.50	16.00 up	30
Argyle House.....	2.50	15.00 up	30
Hillside.....	2.00	Applc'n	30
Marchmont .....	3.00	"	30
Reid Hall.....	(Fur. rooms only)	4.00 up	25
Arcade.....	3.00	Applc'n	25
Marjorie Cottage .....	2.50	12.00 up	20
Sunny Brae.....	2.00	15.00 up	16
Sunny Crest .....	2.00	12.00 up	16
Fairview .....	2.00	12.00 up	14
Brayton Lodge .....	Applc'n	12.00 up	12
Corner House .....	Applc'n	12.00 up	8
<i>Pembroke</i>			
Grasmere-by-the-Sea .....	2.50	15.00 up	50
Rockville .....	2.00	12.00 up	12
Falkirk Villa .....	Applc'n	15.00 up	10
Canada Villa .....	2.50	12.00 up	10
<i>Paget</i>			
Hotel Inverurie and Cottages.....	3.00	21.00 up	140
South Shore Hotel .....	3.00	21.00 up	120





THE POINT PLEASANT HOTEL, HAMILTON



THE NEW WINDSOR HOTEL, HAMILTON

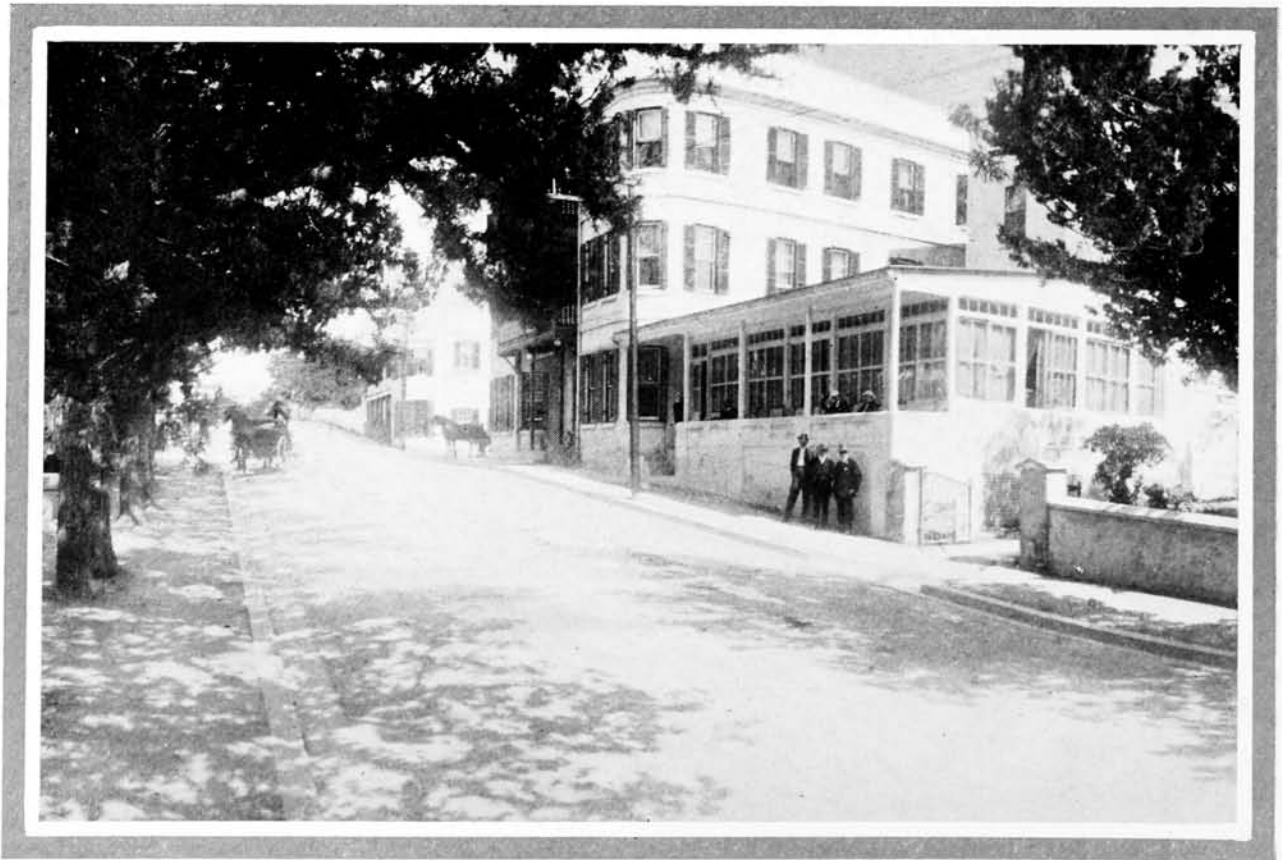


THE KENWOOD HOTEL, HAMILTON

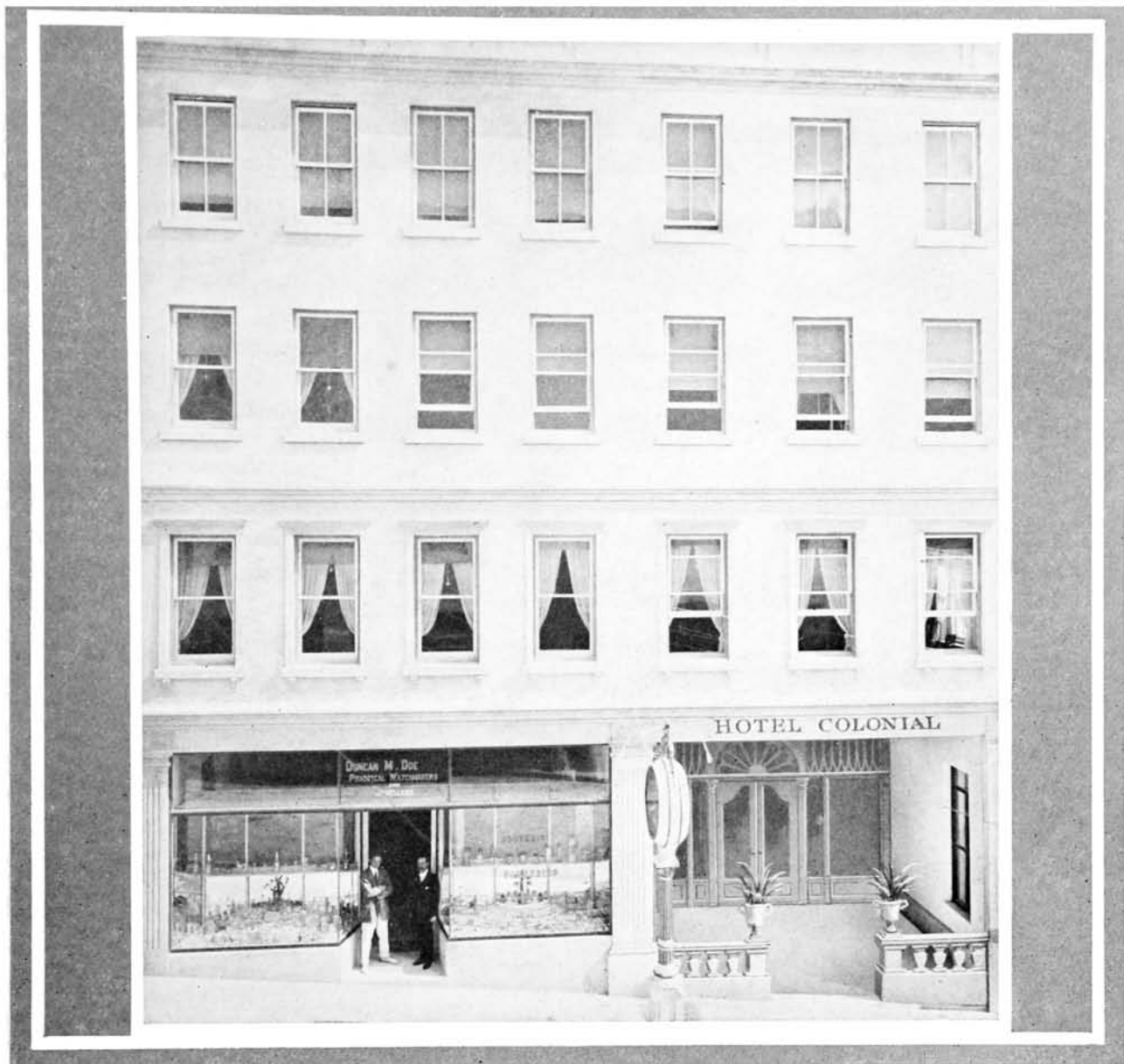
<i>PARISH—Paget (Continued)</i>	<i>RATE PER DAY</i>	<i>RATE PER WEEK</i>	<i>GUESTS</i>
The Netherlands .....	Appl'cn	18.00 up	30
Abbotsford .....	2.50	12.00 up	30
Harbour View .....	2.50	12.00 up	26
Harmony Hall .....	2.50	16.00 up	22
Beverly .....	2.00	12.00 up	20
Mont Royal .....	2.50	14.00 up	20
Newstead Inn .....	3.50	20.00 up	20
<i>Warwick</i>			
The Belmont Hotel .....	3.50	25.00 up	125
Southcote .....	Appl'cn	10.00 up	10
Eastbourne Cottage .....	1.50	10.00 up	8
Lorraine .....	2.00	12.00 up	6
<i>Hamilton Parish</i>			
Frascati Hotel .....	3.00	21.00 up	125
Seaward .....	Appl'cn	15.00 up	29



THE BELMONT HOTEL, WARWICK



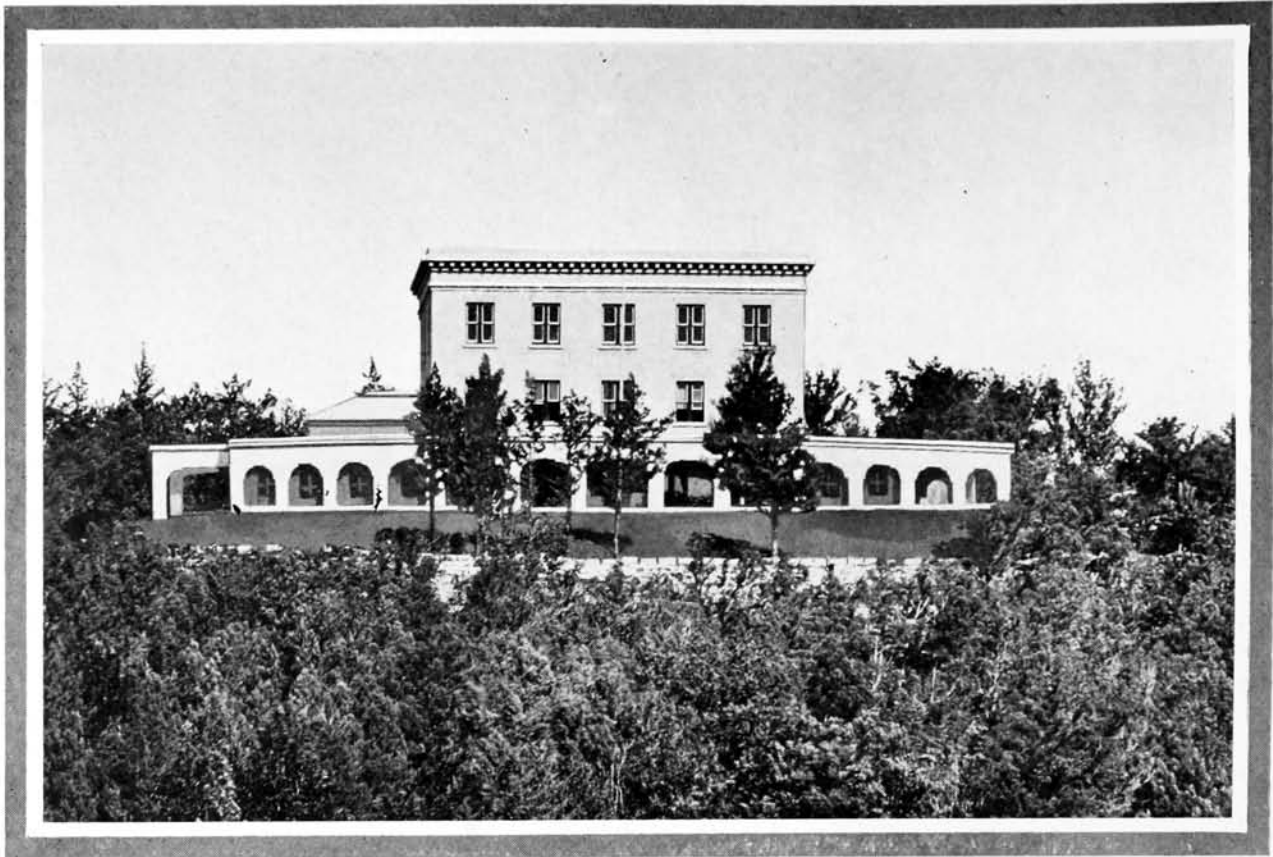
THE IMPERIAL HOTEL, HAMILTON



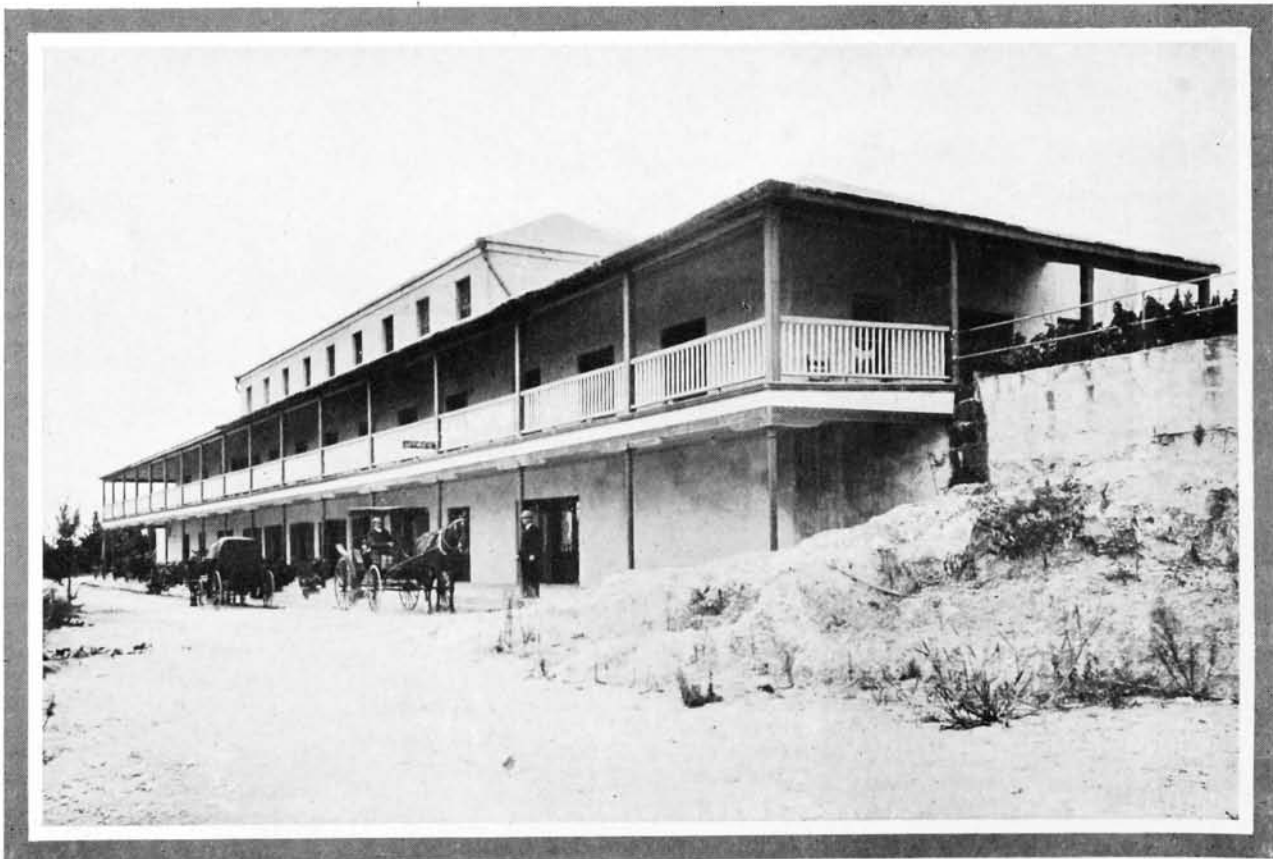
THE COLONIAL HOTEL, HAMILTON

<i>PARISH</i>	<i>RATE PER DAY</i>	<i>RATE PER WEEK</i>	<i>GUESTS</i>
<i>St. George's</i>			
The St. George Hotel.....	3.00	21.00 up	150
Shore Hills Hotel .....	4.00	21.00 up	80
Somers Inn.....	2.00	14.00 up	55
Higinbothom Hotel .....	2.50	15.00 up	50
Burch Castle .....	Applc'n	10.00 up	14
Hillcrest .....	2.00	14.00 up	16
Block House.....	1.75	12.00 up	10
Kingston House.....	1.50	10.00 up	8
Cosy Tea Room .....	1.50	10.00 up	6
Station View .....	Applc'n	12.00 up	
<i>Somerset</i>			
Fairview .....	1.75	10.00 up	25
Scaur Lodge. ....	2.50	14.00 up	25
Summerside.....	2.00	14.00 up	20





THE EAGLE'S NEST HOTEL, HAMILTON



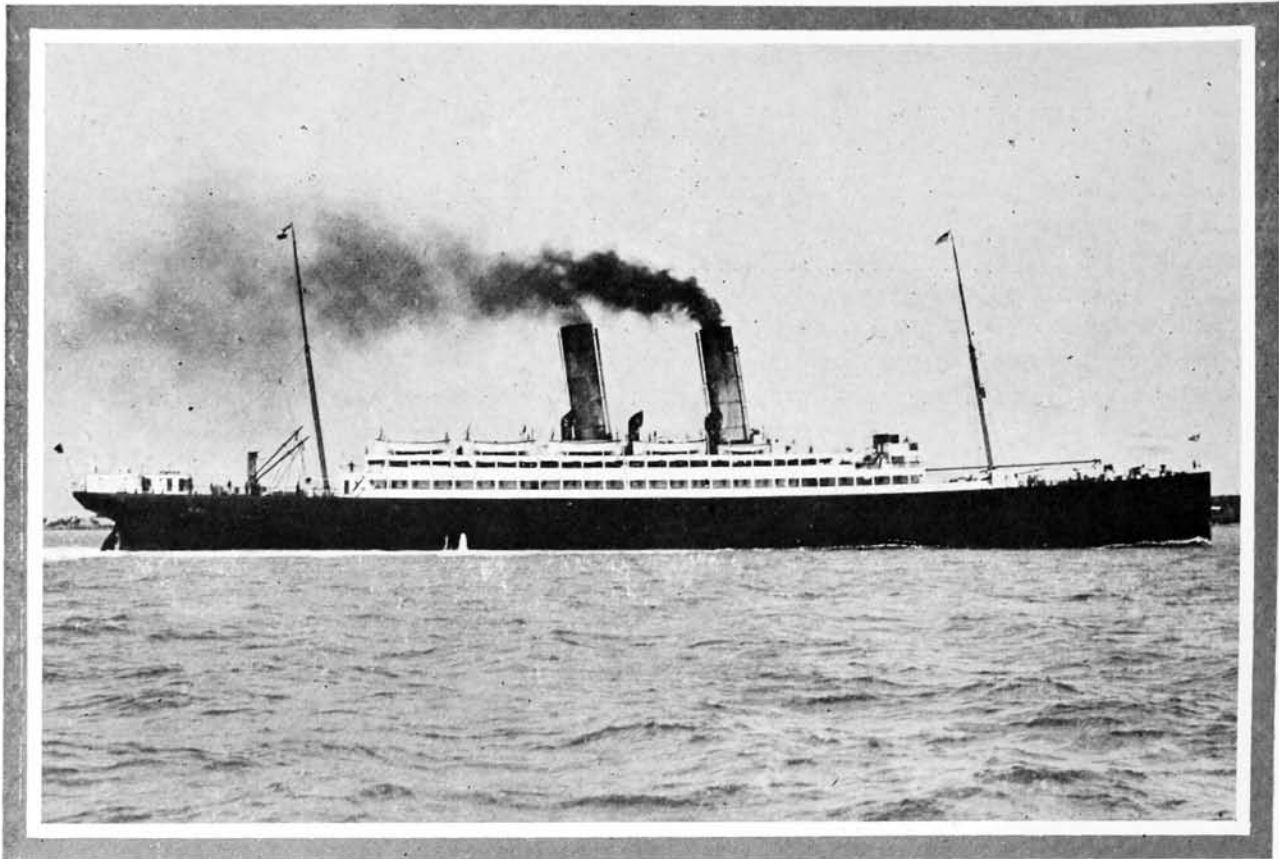
THE SOUTH SHORE HOTEL, PAGET

PARISH	RATE PER DAY	RATE PER WEEK	GUESTS
<i>Flatts</i>			
Hill Crest .....	Appl'cn	14.00 up	
Brightside.....	Appl'cn	10.00 up	
Palmetto Grove.....	“	Appl'cn	
<i>Southampton</i>			
Seaward Lodge .....	Appl'cn	14.00 up	8

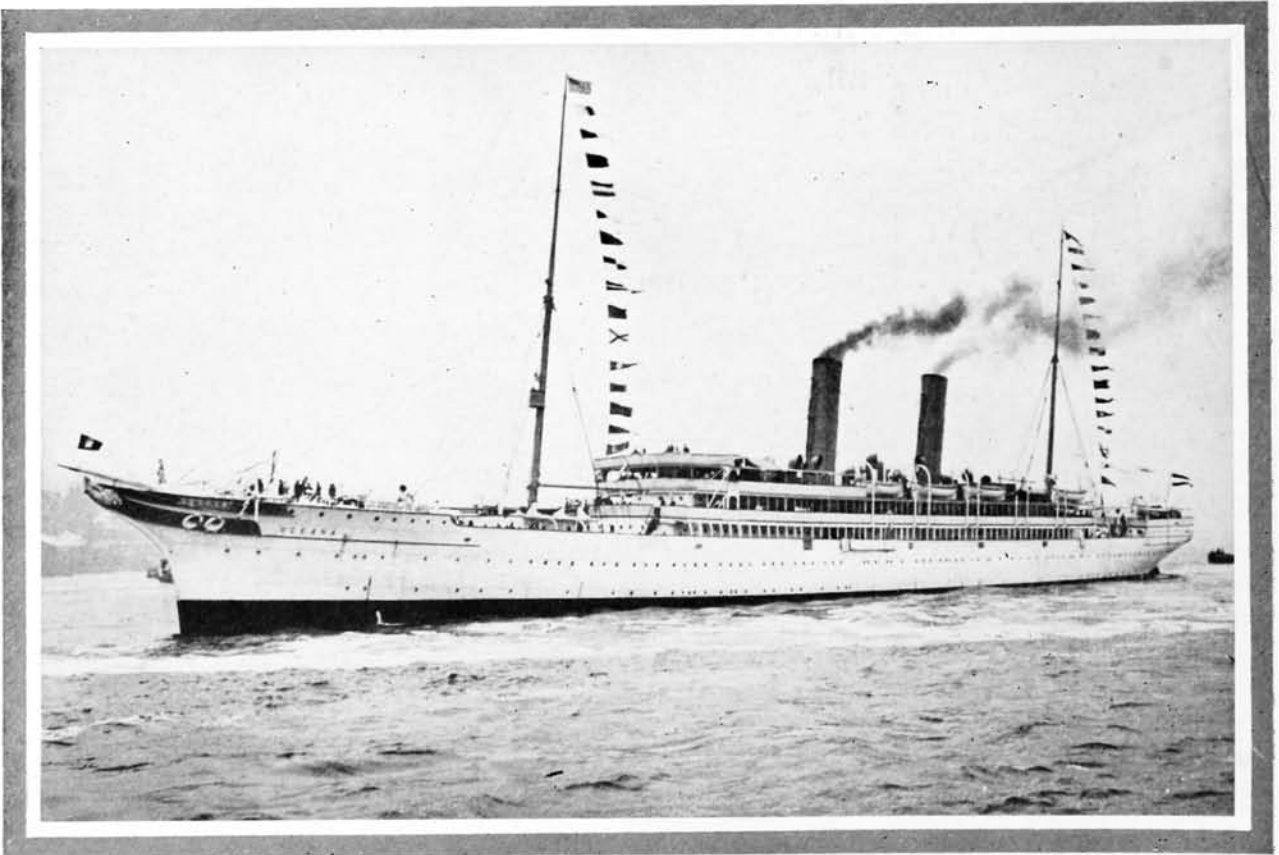
*SPECIAL NOTE*—The above rates are correct at time of publishing this guide, but can be confirmed and the difference, if any, between Summer and Winter rates ascertained on application to any of the Tourist Agencies, Bermuda Hotels or Boarding Houses, or to the offices of the Bermuda Steamship companies.

## BERMUDA STEAMSHIP SERVICE

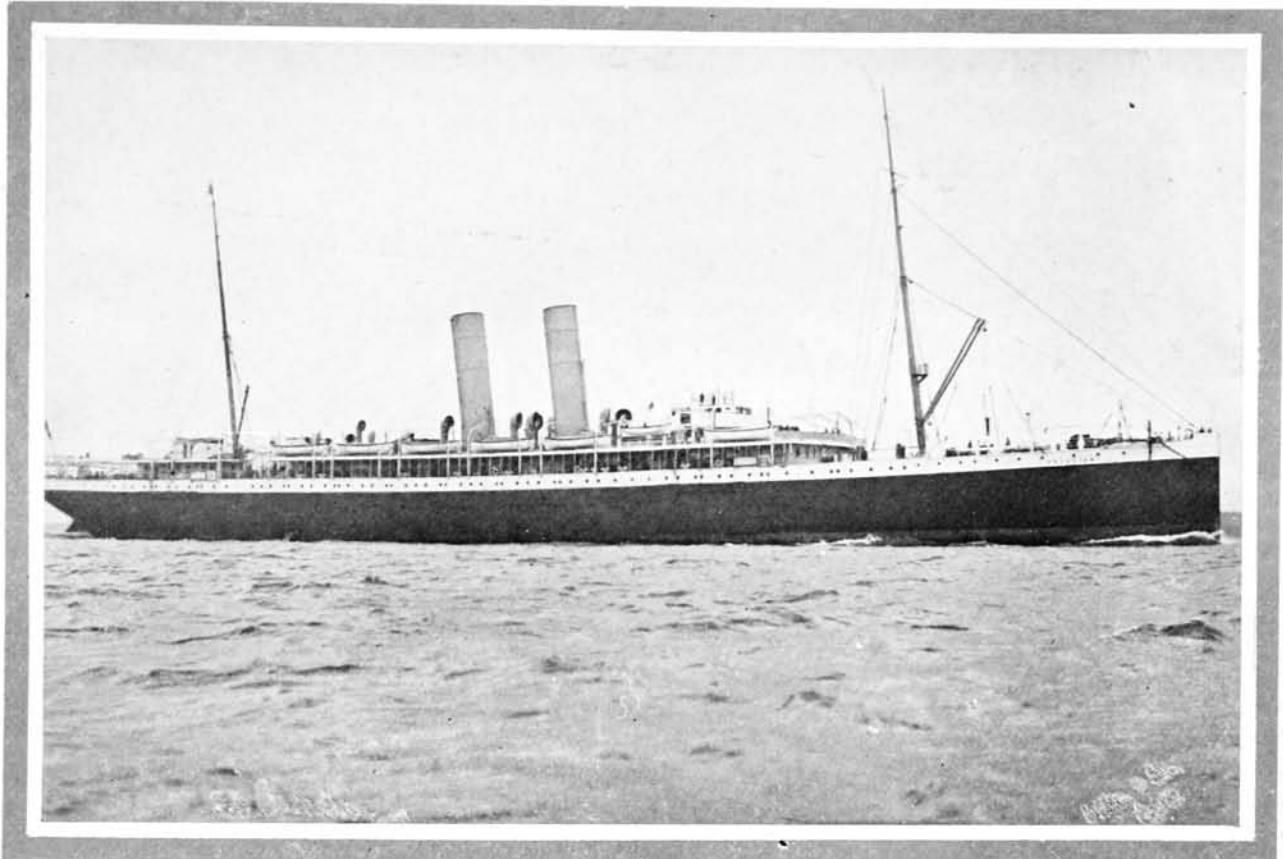
Bermuda has excellent steamship service with New York and Halifax, N. S., and St. John, New Brunswick. Three steamship lines—the Quebec Steamship Company with offices at 29 Broadway, New York, the Royal Mail Steam Packet Company, at 26 Broadway, New York, and the Bermuda-American Steamship Company at 1460 Broadway, New York, operate passenger steamers between New York and Bermuda, while the Royal Mail Steam Packet Company also controls the Halifax-Bermuda-West Indies service. The steamers, as will be noted by reference to the illustrations shown on pages 48 and 49, are modern vessels, large and comfortable, and are equipped with wireless telegraph and all life-saving devices required by the British and American maritime authorities. Built especially for trade in warm climates, they have broad promenade decks, large lounging rooms, and well-ventilated staterooms, with electric fans and lights. The cuisine is excellent. Three sailings a week from New York are scheduled in the Winter season, and the voyage consumes forty-eight hours or less. Rates of fare and timetables may be obtained upon application to the New York offices of the steamship companies, and from tourist agencies in the larger American and Canadian cities. It is a good plan for a tourist to book his return passage from Bermuda at the same time as reservations are made for the outgoing trip. Every effort is made in Bermuda to enable the tourist to reach his hotel or boarding house in a minimum of time. Customs formalities are carried out promptly, without annoyance to the passengers, porters are on hand to take charge of his luggage, and carriages are at his disposal.



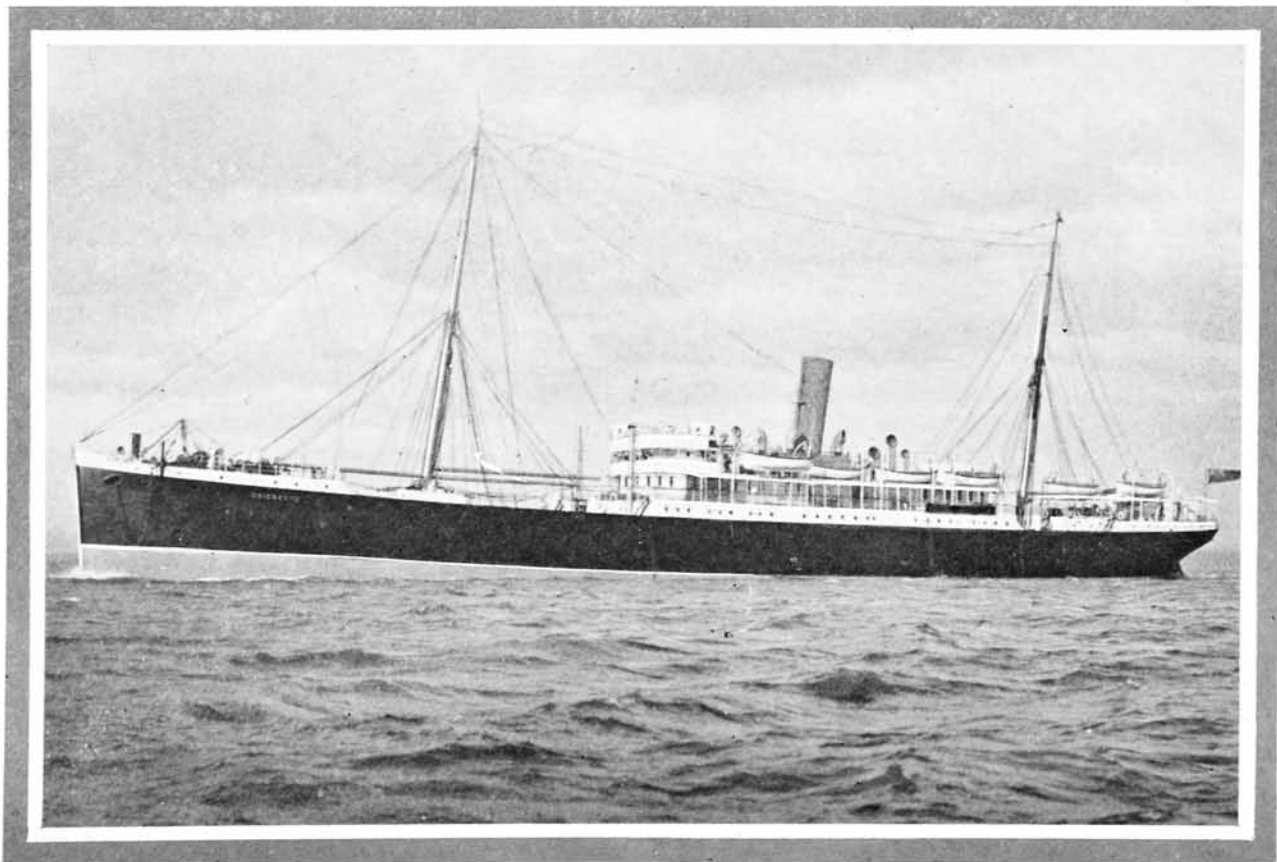
S. S. "BERMUDIAN," Passenger Accommodations, 358  
The Quebec S. S. Co. Office, 29 Broadway, New York. Pier, 47, North River, New York City



S. S. "OCEANA," Passenger Accommodations, 600  
The Bermuda-American S. S. Co. Office, 1460 Broadway, New York. Pier 32 North River,  
[ 48 ] New York City



S. S. "ARCADIAN," Passenger Accommodations, 325  
The Royal Mail Steam Packet Co., 26 Broadway, New York. Pier 42, North River, New York City



S. S. "CHIGNECTO," Passenger Accommodations 250  
The Royal Mail Steam Packet Co., 26 Broadway, New York. Halifax-Bermuda-West Indies Route

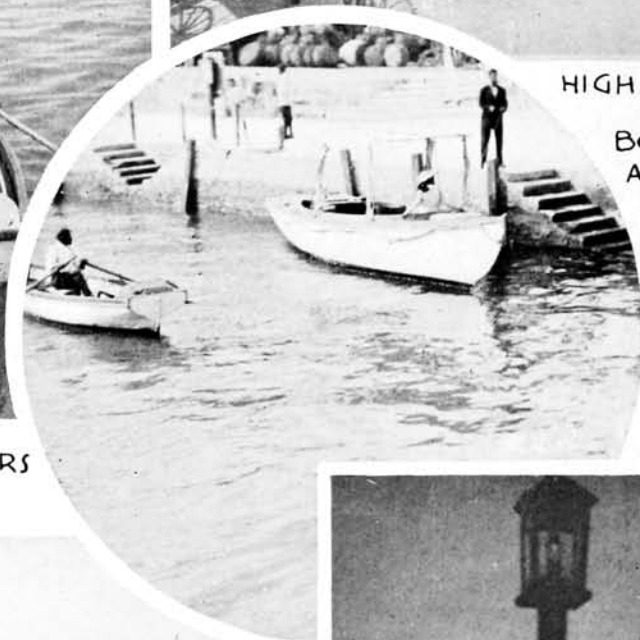




COLORED BOATMAN  
FERRYING PASSENGERS  
ACROSS HARBOR



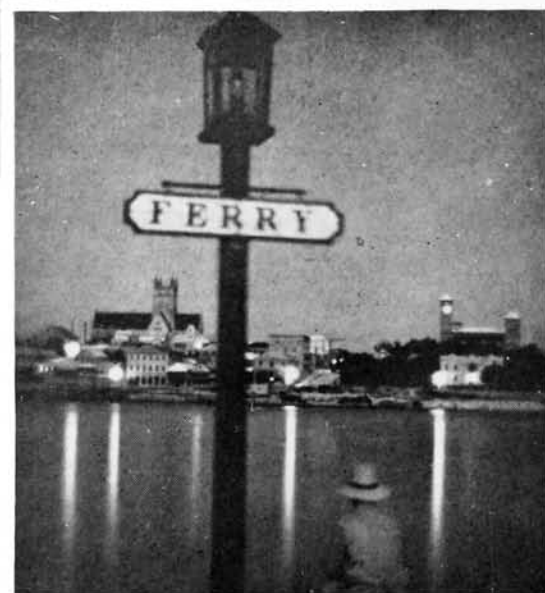
HIGH CLASS LIVERY  
SERVICE -  
BOTH PRIVATE  
AND AT HOTELS



BOAT LANDINGS  
WHICH ARE USED  
BY THE VARIOUS  
FERRIES



THE FINE CORAL ROADWAYS  
MAKE WHEELING VERY POPULAR



WAITING FOR THE FERRY TO  
HAMILTON

METHODS OF TRANSPORTATION IN AND ABOUT BERMUDA

Automobiles, Trolley Cars and Railroads are Here Replaced By Carriages, Bicycles and Boats

# Information for the Tourist

**T**OURISTS who go to Bermuda in Summer should carry an outfit similar to that gathered for a sojourn at a northern resort. A light overcoat or raincoat for use on shipboard is necessary. For a Winter trip heavier garments should be included in the wardrobe, although it is usually warm enough in Bermuda to wear flannel suits and straw hats in Winter. Women should always have warm wraps to wear over their light gowns in the evening. Naturally, a complete Winter outfit must be carried by those who intend to return north in cold weather. The Bermudian shops are well stocked with English and American goods of high quality, made especially for warm climates, and as low duties are imposed, prices are comparatively low and it is possible to replenish one's wardrobe with a small outlay of money. Linen and cotton goods are remarkably cheap, as compared with American prices. As many tourists carry cameras, there are stores which make a specialty of photographic supplies and the development of prints. Photographing in the vicinity of the military fortifications is naturally prohibited. The clear atmosphere and bright light make peculiarly favorable conditions for the photographer in Bermuda and he can even get satisfactory pictures by moonlight.

British currency, which is illustrated in this book for the convenience of the tourist, is the recognized medium of exchange, but American currency is accepted everywhere at its face value, and tradesmen quote prices in American dollars and cents. Letters of credit drawn on Bermuda banks, may be purchased in New York but the recognized travellers' cheques are the most convenient form of carrying large sums of money. It is well to bear in mind the fact that the rate of postage to Bermuda from the United States is five cents, an ounce or fraction thereof. Many Americans labor under the delusion that the rate is but two cents, and as a consequence, their friends in Bermuda are obliged to pay double postage on underpaid letters. President Wilson was a victim of the practice of underpaying postage when he visited Bermuda soon after his election.



COTTAGE ON THE ISLE OF WHITE. HAMILTON HARBOR



PRETENTIOUS TYPE OF BERMUDA RESIDENCE



COTTAGE IN PAGET OVERLOOKING HAMILTON



PRETTY COTTAGE AND GROUNDS IN PAGET.



COLORED LABORER IN QUARRY SAWING OUT BLOCKS OF CORAL



QUAINT TYPE OF COTTAGE IN PEMBROKE

### BERMUDA'S BEAUTIFUL COTTAGES

The Beauty of Bermuda's Cottages Is Due to the Native Coral Stone of which They are Built, to the Simplicity of Their Design, and to Their Charming Environment and Gardens

RATES COVERING TRANSPORTATION IN AND ABOUT BERMUDA

The three methods of transportation in the colony are by carriage, bicycle and boat. Carriages are of two classes—the single victoria, which holds three passengers and a driver, and the double, which holds five passengers and driver. Following is a schedule of prices for carriage hire, with Hamilton as a base, proportionate rates being charged from other bases :

CARRIAGE HIRE

PLACE	SINGLE	DOUBLE	PLACE	SINGLE	DOUBLE
Tucker's Town.....	\$3.00	\$6.00	Flatts Village.....	\$2.00	\$4.00
Light House (Gibb's Hill)	3.00	6.00	Elba Beach.....	2.00	4.00
Around Harrington Sound	3.00	6.00	Elba Beach and South Shore		
Tucker's Town and around			Drive.....	3.00	6.00
Sound.....	4.00	8.00	Prospect Parade and Band		
Devil's Hole.....	2.50	5.00	Concert.....	3.00	6.00
Somerset.....	5.00	10.00	Night service, balls, the-		
St. George's.....	5.00	10.00	atres, etc.....	2.50	5.00
Dockyard.....	5.00	10.00	North Shore and Spanish		
Spanish Rock.....	2.00	4.00	Point.....	2.00	4.00

Singles, per week, cost \$30; doubles, \$50; saddle horse for one hour or two, \$2.00.

BICYCLE HIRE

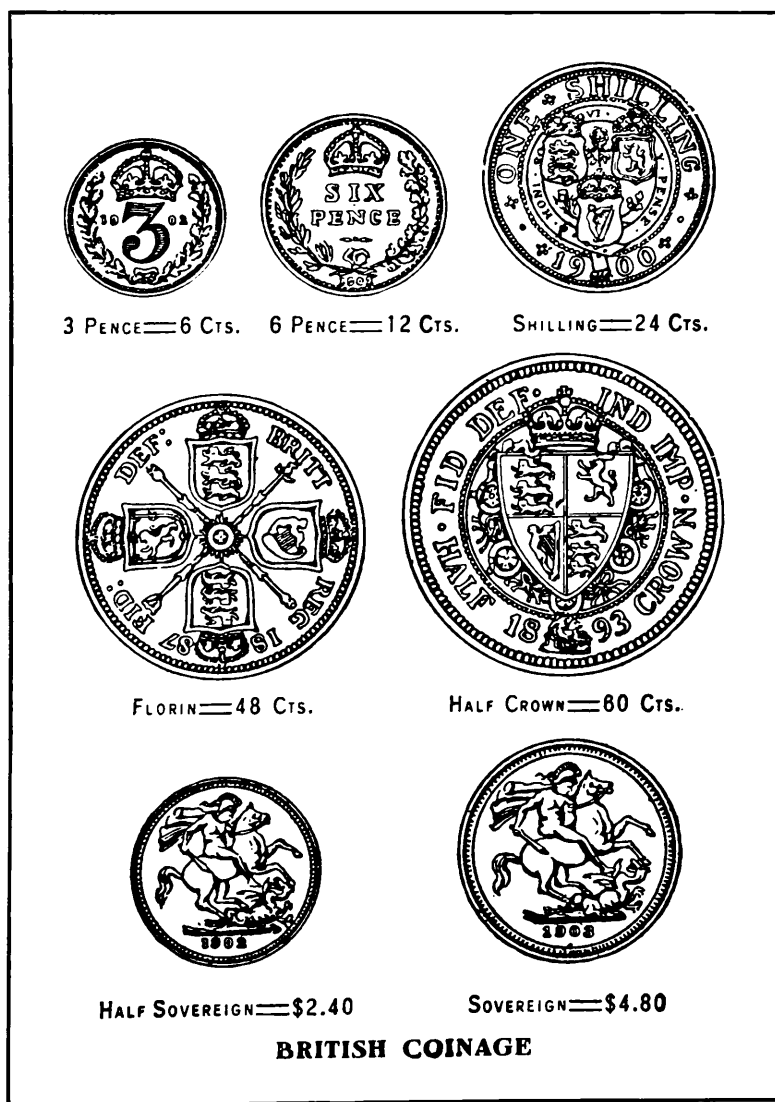
Rates for hire of bicycles are: One hour, 25 cents; two hours, 36 cents; three hours, 50 cents; half day, 60 cents; day, \$1; week, \$3; month, \$10; for every week over a month, \$2.50 weekly; for three months or over, \$8 a month.

ROWBOAT, CANOE, AND SAILBOAT HIRE

Rates for rowboats are: One hour 25 cents; day, \$1.25 week, \$2.50.

For canoes: One hour, 50 cents; day, \$1.50; week, \$3.25. Special arrangements are made for longer terms.

Sailboats with competent pilots may be rented for \$2.50 to \$4 per half day, according to size of boat. Fishing parties may be arranged on giving timely notice.



BRITISH COINAGE WITH EQUIVALENTS IN U. S. MONEY



BERMUDA PARLIAMENT -  
POST OFFICE IN FOREGROUND



THE  
CATHEDRAL  
IN HAMILTON



ENTRANCE TO  
GOVERNMENT  
HOUSE



GOVERNMENT HOUSE



CUSTOM HOUSE

### PUBLIC BUILDINGS IN BERMUDA

The Colony's Public Buildings Are of a Pleasing Type of Architecture and the Well Kept Grounds Surrounding Them Add Much to Their Attractiveness

OBSERVATORY, PROSPECT HILL,  
 Lat. 32° 17' 40" North, Long. 64° 45' 39" West.  
 Elevation 151 ft. above sea level.

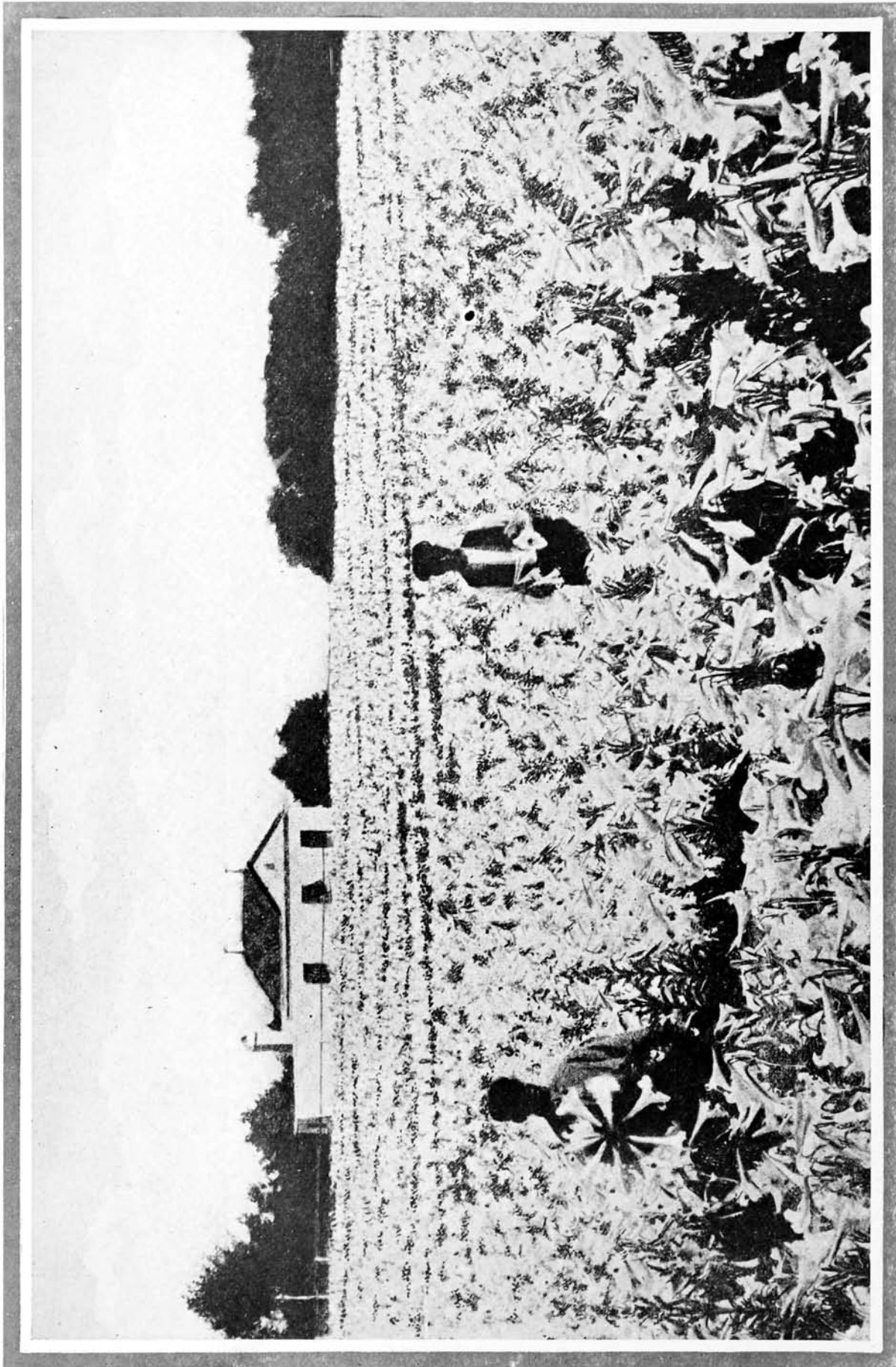
Observations taken daily at 8.41 a.m., 3 p.m. and 8.41 p.m.

MONTH	Atmospheric pressure in inches.				Temperature of the air				Relative Humidity		Clouds.		Direction of Wind						Velocity of wind			Precipitation.											
	Mean corrected to 32° F.	Highest.	Lowest.	Date	Range.	Mean.	Highest.	Date	Lowest.	Date	Mean.	Daily Range.	Mean amount.	Number of days completely clouded.	North.	North East.	South East.	South.	South West.	West.	North West.	Calm.	Mean miles per hour.	Highest velocity per hour.	Direction and date.	Amount.	Highest amount in any day.	Date.					
January	30.167	30.530	29.740	3	790	66.274	6	3	55.0	11	10.1	14.6	82.3	69.4	4	6	5	3	20	8	5	17	23	13	5	—	12.3	28.2	S	3	2.26	.56	4
February	29.946	30.346	29.517	25	829	63.422	0	15	46.2	26	11.5	17.4	80.3	66.7	18	7	4	14	5	5	4	8	19	8	21	—	10.7	29.0	N.W.	18	5.90	1.16	2
March	30.209	30.444	29.776	31	668	66.773	8	28	52.6	9	9.4	14.0	87.1	74.5	9	6	6	5	11	11	9	36	15	1	3	—	14.2	26.9	N.E.	23	3.34	.86	12
April	29.967	30.333	29.713	30	620	64.873	8	30	49.8	10	12.0	15.8	80.2	67.2	9	5	2	13	9	2	3	23	17	5	16	2	14.1	25.8	N.W.	22	1.94	.56	16
May	29.954	30.191	29.648	11	543	69.077	2	25	49.4	12	12.3	16.2	82.9	68.8	14	5	1	11	2	1	5	20	21	6	25	2	12.8	22.8	S.	28	1.32	.72	29
June	30.010	30.171	29.793	29	378	76.083	0	27	64.6	19	11.9	15.2	85.1	75.0	30	5	3	2	2	1	4	17	44	17	2	1	10.6	20.7	SSW	13	3.16	1.66	29
July	30.032	30.187	29.822	16	305	78.085	6	26	65.0	1	12.5	15.2	81.0	71.0	18	5	—	6	4	5	4	12	32	24	2	3	8.8	19.1	S.W.	16	2.22	.78	9
August	30.000	30.174	29.694	15	480	79.184	2	2	67.4	18	10.7	15.4	85.7	75.0	22	6	2	4	7	7	11	21	34	5	4	—	10.3	16.7	S.W.	4	8.86	2.72	20
September	29.965	30.145	29.817	30	328	79.285	6	22	67.4	18	11.0	13.8	82.0	75.0	24	5	—	20	24	22	8	6	3	4	3	—	9.5	15.8	N.E.	10	1.84	.76	10
October	29.900	30.103	29.494	3	699	75.682	0	6	63.8	3	10.8	16.2	82.0	67.0	15	5	—	11	6	10	15	13	14	7	15	2	11.5	16.4	WSW	15	4.22	1.04	7
November	29.955	30.178	29.673	8	505	69.277	6	10	51.0	12	10.4	19.4	81.0	69.0	2	6	5	27	19	7	7	6	8	4	12	—	13.6	31.7	N.W.	25	11.36	3.62	7
December	29.919	30.181	29.508	1	673	64.972	6	6	53.8	12	10.4	13.6	82.0	72.0	2	6	2	15	11	2	4	12	16	6	25	2	14.2	32.6	NSE	1	3.68	1.08	22

Mean Atmospheric pressure for the year.....30.002  
 Mean Temperature of the air for the year...71.1  
 Mean Hourly velocity of Wind for the year...12.4  
 Mean relative Humidity for the year.....82.6

Total amount of rainfall for the year.....49.98 inches  
 Difference of rainfall from average of the past 9 years.....2.91 inches less.

C. WARD, OR. MR. SERGT., R.A.M.C.,  
 Meteorological Observer,  
 3rd January, 1914.



FIELD OF EASTER LILIES

While the Bermuda Lily Is Not As Extensively Cultivated As In Former Years, Its Prestige Remains Undimmed



# Products of Bermuda

**B**ERMUDA'S climate permits the growth of a large variety of agricultural products. Peaches and oranges may be seen flowering at the same time, but at present there are few fruit-producing trees, owing largely to the depredations of the fruit fly. The Chinese banana produces fruit of exceptional flavor all the year round, and from January to June strawberries are in season. Strawberry plants imported from the United States are set out in November and start bearing in January—a fact that seems almost miraculous to the northern gardener. Soil and climatic conditions are peculiarly congenial for the growth of potatoes, onions, celery, lettuce, beets and carrots. The planting season starts in August and September and in contrast with the green foliage, the brick red soil newly plowed, adds a pleasing touch to the general color scheme of the countryside. Two crops of potatoes are obtained each year. Triumph potatoes are planted in August, September and



VARIEGATED TEST OF TOMATOES AT THE BERMUDA AGRICULTURAL STATION, 1914





LARGEST BANANA PLANTATION ON THE ISLANDS



A FIELD OF THE FAMOUS BERMUDA POTATOES



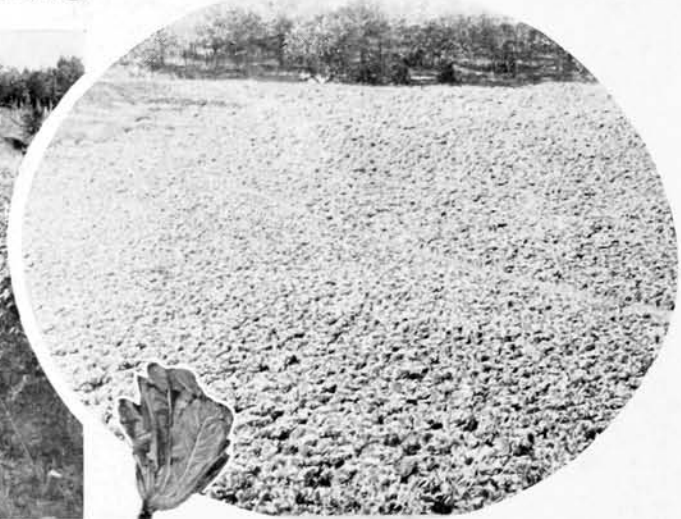
HOW THE FAMOUS BERMUDA ONIONS ARE GROWN



CELERY FOR SHIPMENT TO NEW YORK MARKETS



AN EXCEPTIONALLY LARGE AND FINE CROP OF LIMA BEANS

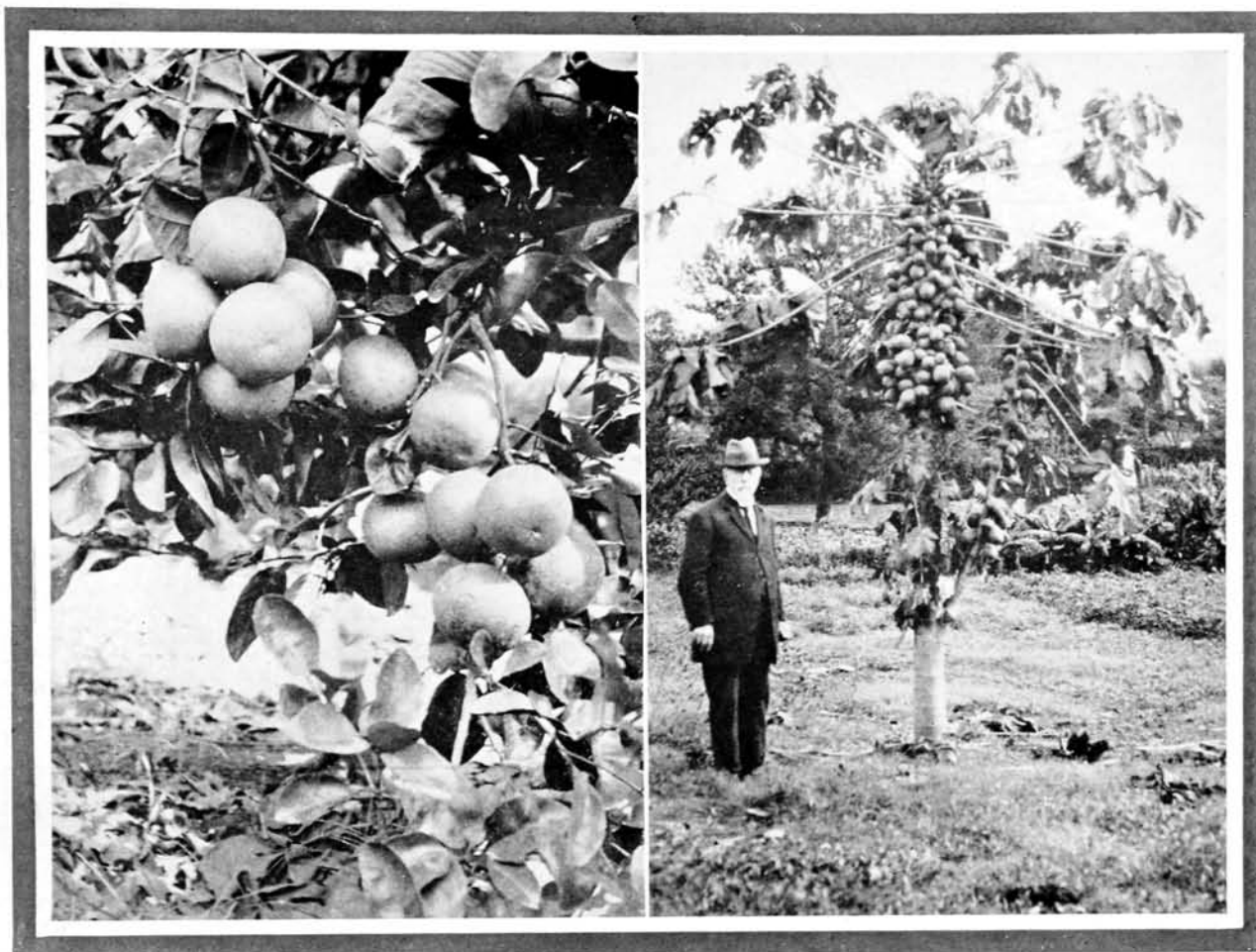


A FIELD OF BERMUDA LETTUCE

SOME OF THE IMPORTANT AGRICULTURAL PRODUCTS

(Inserts show character of the products)

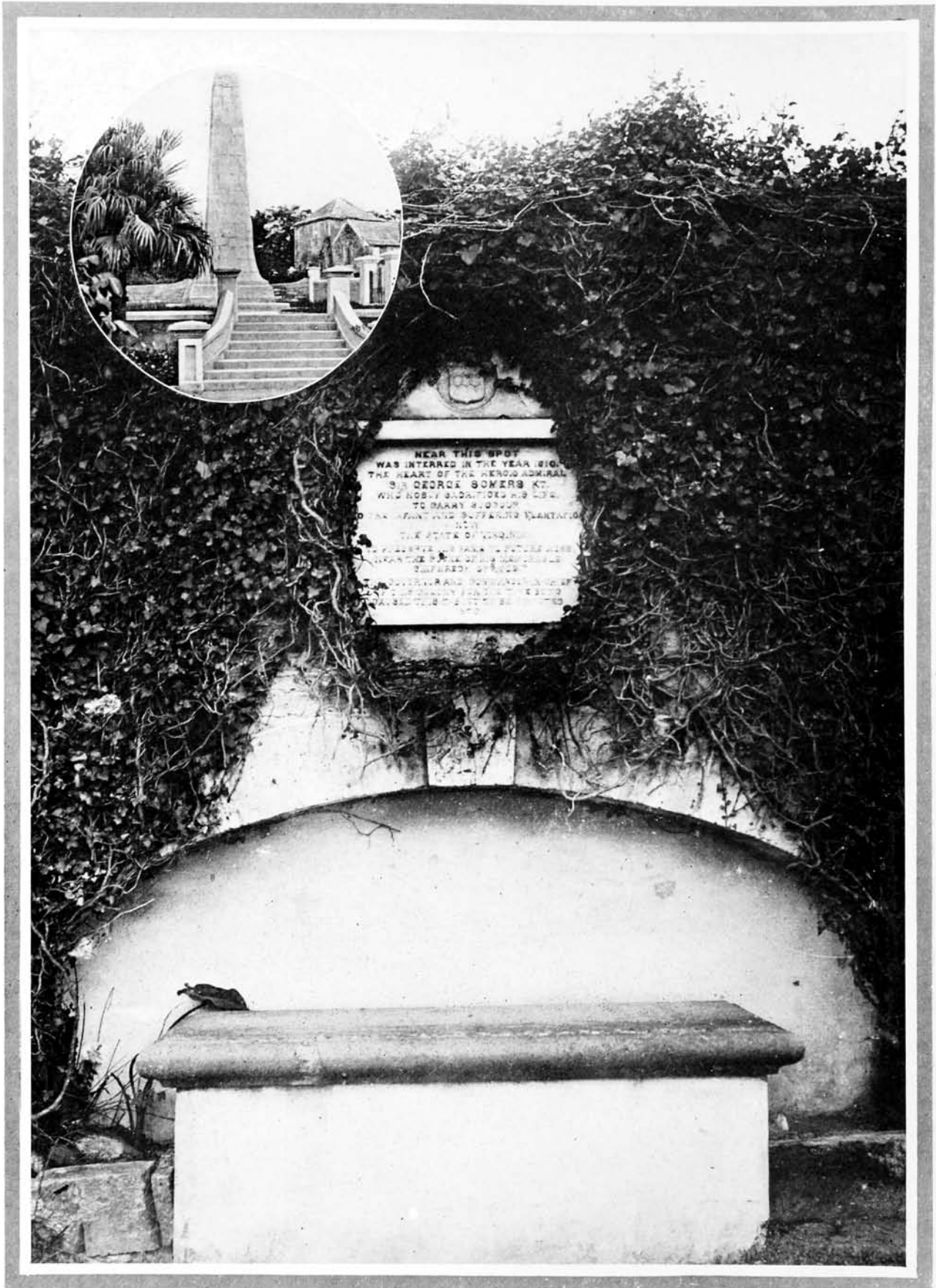
It is the Quality of Her Agricultural Products Rather Than Their Quantity Which Has Given Bermuda Pre-eminence In This Field.



A LARGE CLUSTER OF GRAPEFRUIT

A WELL LADEN PAPA W TREE

October; garnets in January and February. The early portion of the latter crop reaches the American market towards the end of March, bringing high prices, which reach \$8 and even \$10 a barrel. Bermuda onions are famous for their quality and mild flavor, and are much superior to any other onion. Competition from Texas, where onions are grown on an extensive scale, has resulted in lower prices, and the reduction of the area planted to this crop in Bermuda. The seed is obtained from Teneriffe. The green vegetable industry is developing rapidly, and Bermuda ships to New York celery, lettuce, parsley, carrots, beets, lima beans, green peas, and Portuguese cabbage of excellent quality. Shipments go forward from the end of November to May and June and reach the New York market when there is a scarcity of such products. Easter lilies are grown for their bulbs, which are exported, and the fields, when covered in bloom, are one of the chief attractions. Another Bermuda product—arrowroot—has a world-wide reputation.



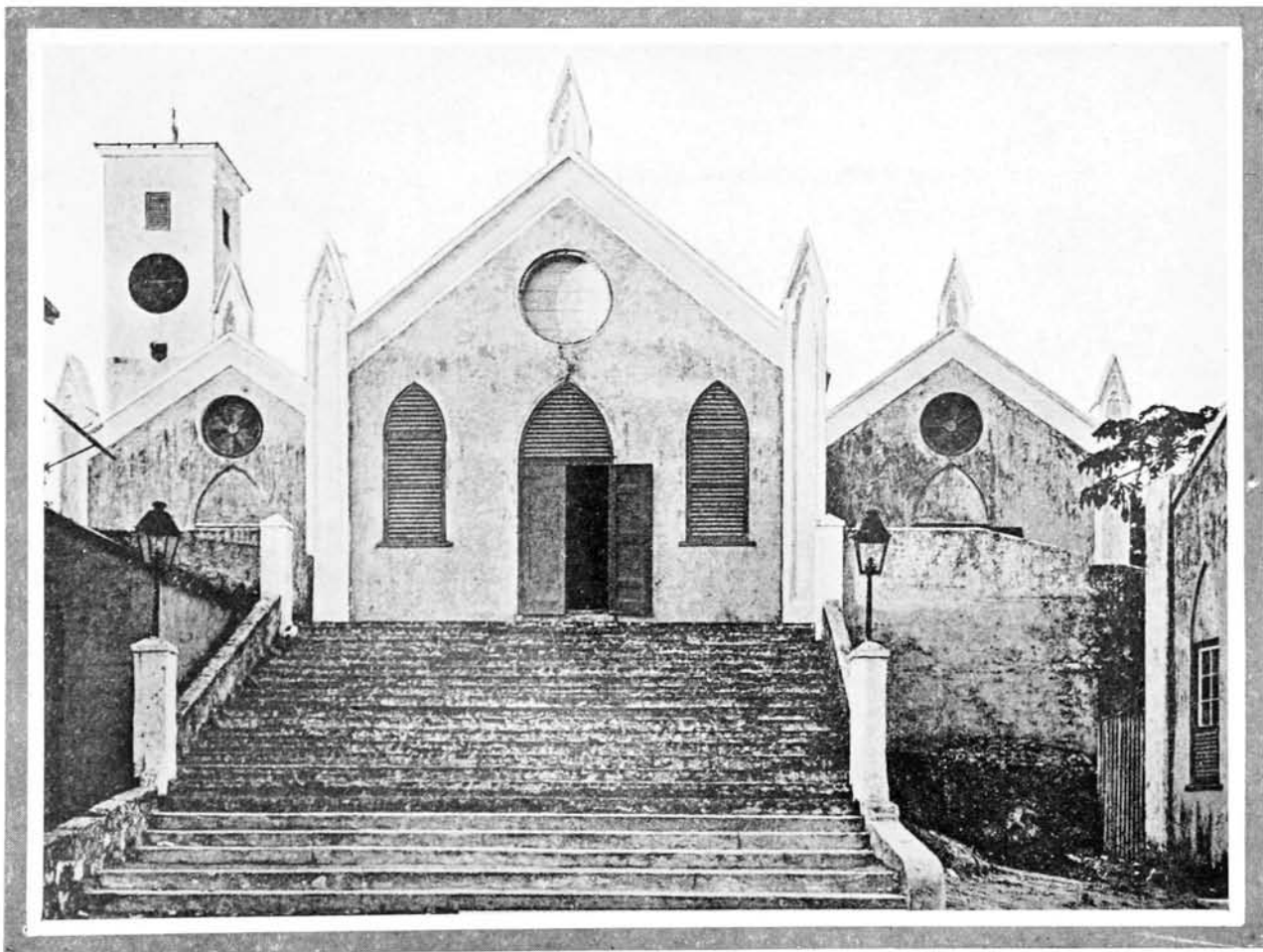
**TOMB AND MONUMENT OF ADMIRAL SIR GEORGE SOMERS**

Three Hundred Years of Bermuda History Were Celebrated in 1909 by the Erection of a Monument to the Heroic Admiral, Sir George Somers, In the Public Gardens at St. George's



# History in Brief

**B**ERMUDA takes its name from Juan de Bermudez, a Spaniard, who discovered the islands in 1515. For many years they bore an evil reputation among sailors, who believed them to be inhabited by devils, and for the better part of a century, Bermuda remained in obscurity. In 1609 Admiral Sir George Somers and a party of Virginia colonists were wrecked on the islands. They built two small vessels, and eventually continued their voyage to the settlement at Jamestown, which they found to be starving. Somers returned to Bermuda to obtain provisions and died there. In the Public Gardens at St. George's, to which town the Admiral gave his name, are two memorials of him. His death was indirectly responsible for the colonization of Bermuda by the Vir-



ST. PETER'S CHURCH AT ST. GEORGE'S

St. Peter's Is the Oldest Church in Bermuda and No Visit to the Islands is Complete Without An Inspection of the Quaint Building and its Graveyard



A WINDING  
ALLEY WAY  
IN ST. GEORGES



ANCIENT WALLS  
SURROUND MOST  
OF THE YARDS  
IN  
ST. GEORGES

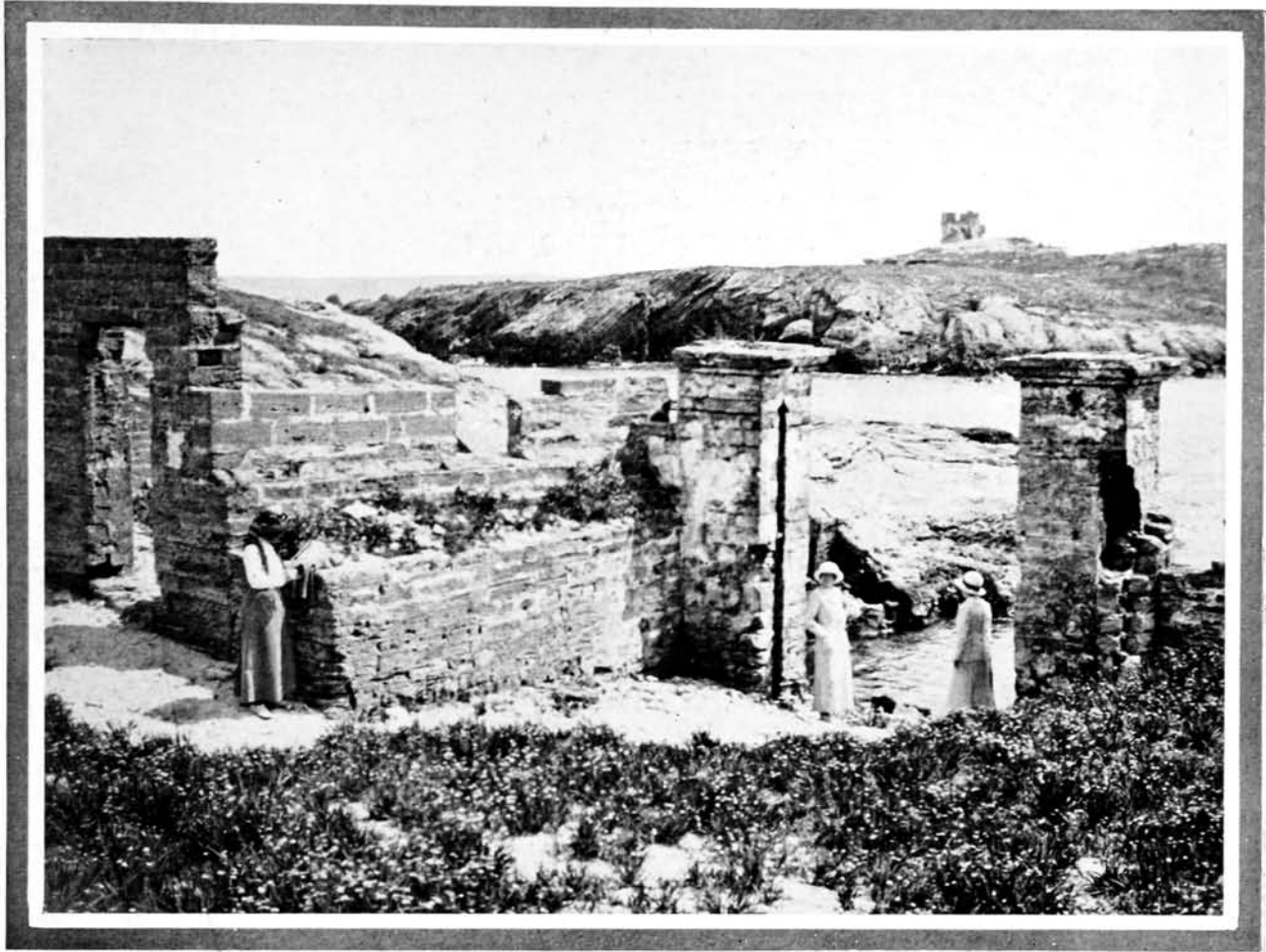


A VIEW OF OLD ST. PETERS FROM ONE  
OF THE QUAINT NARROW STREETS OF ST. GEORGES



THIS QUAINT STRUCTURE AT ST. GEORGES IS THE OLDEST HOUSE ON THE ISLAND.

THE ATMOSPHERE OF THE 16th CENTURY, WHICH SURROUNDS QUAINT OLD ST. GEORGE'S, MAKES THE PLACE RICH IN HISTORIC INTEREST



ONE OF THE ANCIENT RUINS ON CASTLE ISLAND

ginia Company, which was succeeded by the Bermuda Company. The first colonists arrived on July 12, 1612, and since that date, Bermuda has been protected by the English flag. In 1684, the islands passed from the hands of the proprietary company to the jurisdiction of the Crown authorities, but the people were permitted as before to make their laws. Their Parliament, which dates from 1620, is the oldest law-making body in existence, excepting the Mother Parliament in London. The Colonial Parliament consists of two branches, the House of Assembly of 36 members, and the Legislative Council of nine members. Members of the House, four from each parish, are elected by popular vote, the franchise being based on a property qualification. Members of the Council, and the Governor and Commander-in-Chief, always an officer of the British Army, are appointed by the Crown. Aside from the central government, there are bodies called vestries, which supervise local affairs in the various parishes. In both Hamilton and St. George's, municipal affairs are con-

trolled by a mayor and corporation. The census of 1911 gives the total number of inhabitants as 18,994, of which 6,691 are white and 12,303 colored. The colored people are the descendants of slaves, some of whom intermarried with Pequod Indians, who were also held in slavery. The whites are of English stock, many families tracing their ancestry to the earliest settlers.



“Then good-bye to our friends afloat,  
May ye return again to our shores.”









# BERMUDA

*Nature's Fairyland*

