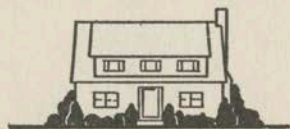


OSLER
PAMPHLET

HOW SAFE IS HOME



OSLER
PAMPHLET

METROPOLITAN LIFE INSURANCE COMPANY

CANADIAN HEAD OFFICE: OTTAWA, CANADA

This is a reproduction of a book from the McGill University Library collection.

Title: How safe is home?
Author: Metropolitan Life Insurance Company
Publisher, year: Ottawa : Metropolitan Life Insurance Company, [1951?]

The pages were digitized as they were. The original book may have contained pages with poor print. Marks, notations, and other marginalia present in the original volume may also appear. For wider or heavier books, a slight curvature to the text on the inside of pages may be noticeable.

ISBN of reproduction: 978-1-77096-162-3

This reproduction is intended for personal use only, and may not be reproduced, re-published, or re-distributed commercially. For further information on permission regarding the use of this reproduction contact McGill University Library.

McGill University Library
www.mcgill.ca/library



By folding this detector over each picture, you will see how home accident causes may be eliminated. Use the detector throughout this booklet.

How Safe Is Home



ACCIDENTS in the home result in more deaths and serious injuries than do accidents on streets and highways, in industrial plants, or in other places. Based on recent records, an average of one person dies every 14 minutes as a result of a home accident. In addition, one person is permanently disabled every three minutes and someone is temporarily disabled every six seconds.

Nearly all home accidents can be prevented. Parents and other adults in every home have a responsibility to see that safe conditions are provided and maintained.

The illustrations and questions in this booklet are presented to aid in the inspection of your own home. They illustrate the means of preventing the more frequent causes of home accidents. These conditions and others noted in your home should be given prompt attention.

The booklet also may aid you in teaching children the need of safe conditions and safe practices in the home.



Living and Dining Rooms

How many accident causes can you find in this picture? The detector will show you how these causes may be eliminated.

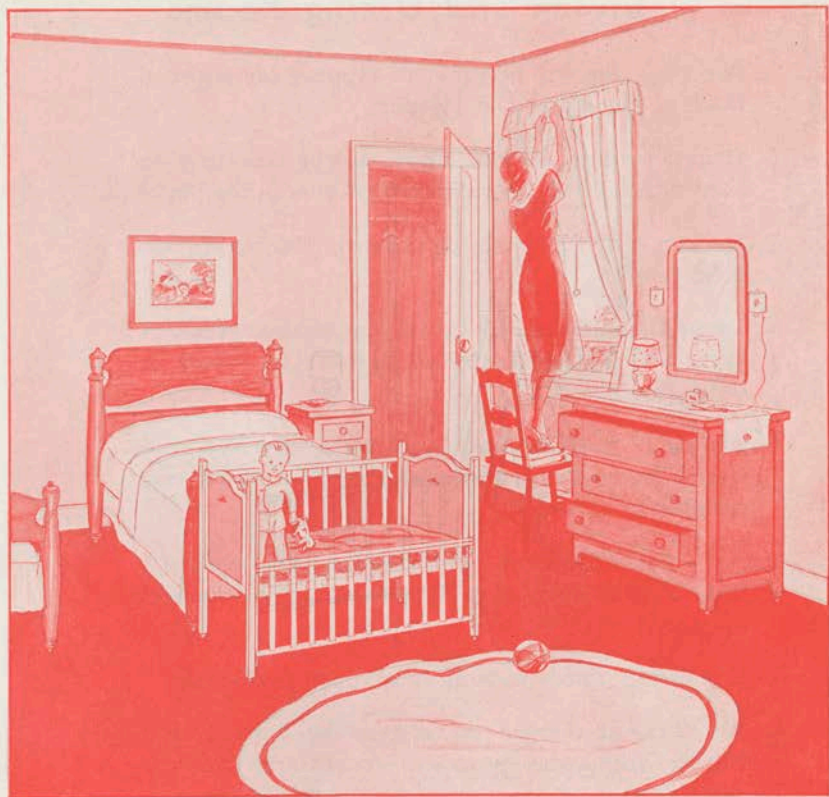
INSPECT YOUR HOME FREQUENTLY

HOME SAFETY — CHECK LIST

Living and Dining Rooms

1. Are rugs secured to prevent slipping on polished floors or curling at the edges?
2. Before retiring for the night, is the furniture so placed that it will not be stumbled over in the dark?
3. Do you keep furniture, particularly chairs, in good condition?
4. Do you make sure that no needles, scissors, pins, or other sharp-pointed objects are left on chairs or other furniture?
5. Are small objects, such as buttons, marbles, and pins, kept from floors and out of reach of very young children?
6. Are cigars, cigarettes, and matches completely extinguished and placed in nonflammable containers after use?
7. Is a screen placed in front of an open fireplace?
8. Are portable electric lamps, toasters, heaters, and similar appliances properly installed to prevent short circuits or fires, and are precautions taken to prevent tripping over cords?
9. Are inflammable materials, such as draperies and decorations, kept away from candles and electric-light bulbs?
10. Do you use approved electric lights instead of candles on Christmas trees?

CORRECT UNSAFE CONDITIONS PROMPTLY



Bedroom

How many accident causes can you find in this picture? The detector will show you how these causes may be eliminated.

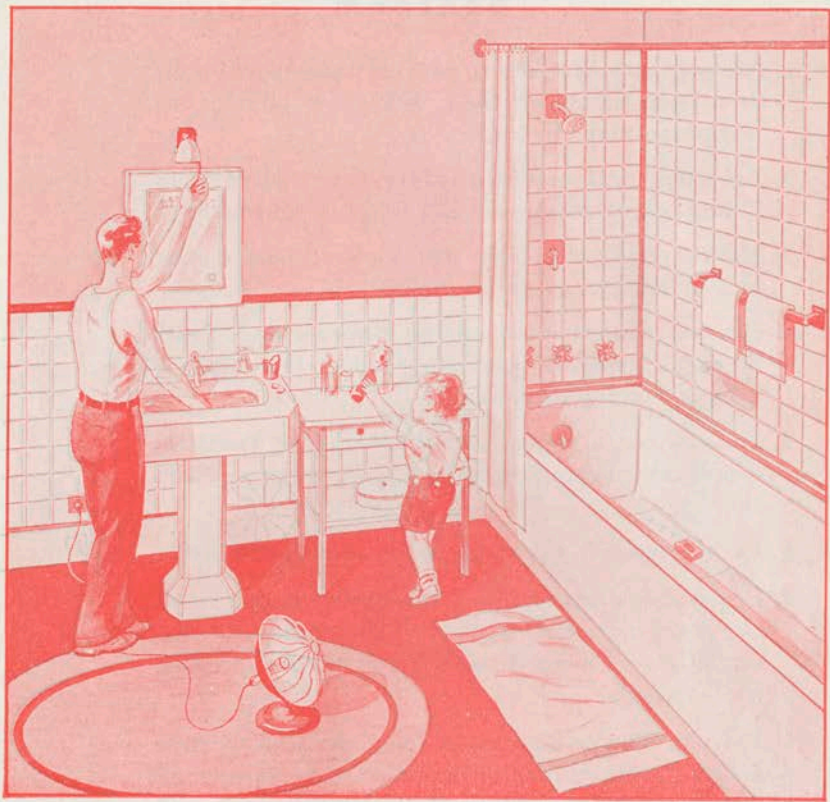
INSPECT YOUR HOME FREQUENTLY

HOME SAFETY — CHECK LIST

Bedroom

1. Are precautions taken to prevent infants and children from rolling off beds, falling out of cribs, or being smothered in bed?
2. Are safeguards provided to prevent children from falling out of windows, off porches, or downstairs?
3. Have you a light or light switch convenient to your bed for emergency use at night?
4. Do you always close bureau drawers and closet doors after use, to prevent someone from falling over or running into them?
5. Do you use a stepladder when hanging curtains, drapes, or reaching up to high places such as closet shelves?
6. Do you make it a practice never to smoke in bed?
7. Is the wiring used on portable electric lamps, heating pads, and other devices of the approved type, and is it kept in good condition in order to prevent short circuits?
8. Do you always disconnect from the wall or floor socket electric curling irons or electric heaters before retiring or before leaving the room for any length of time?
9. If you use gas lighting, oil lamps, or candles, are curtains or drapes fastened so that they cannot be blown into the flame?
10. Do you extinguish gas lights or other open lights before retiring?

CORRECT UNSAFE CONDITIONS PROMPTLY



Bathroom

How many accident causes can you find in this picture? The detector will show you how these causes may be eliminated.

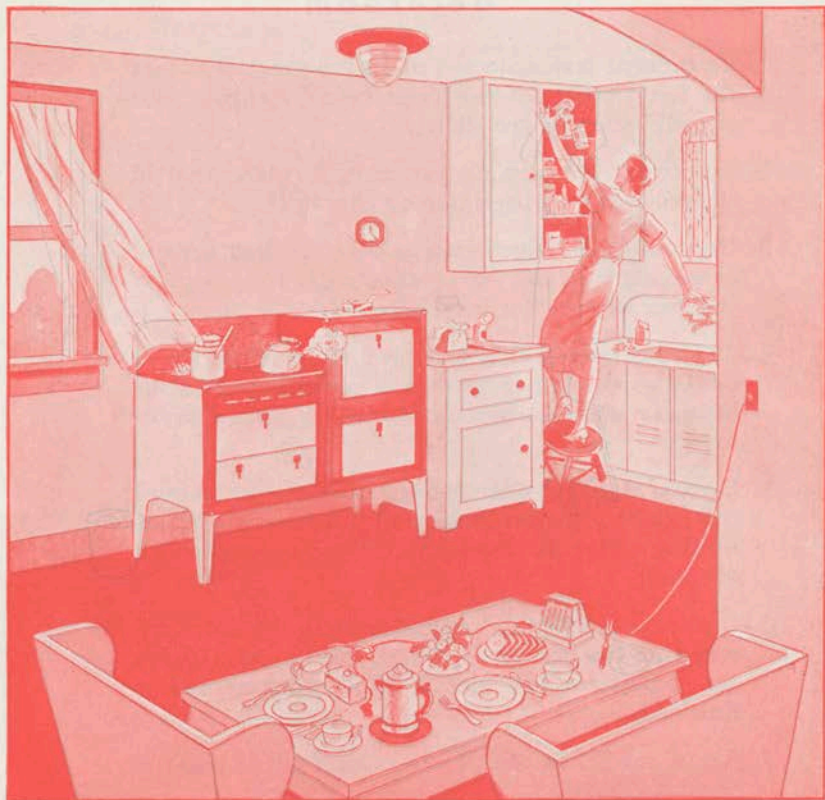
INSPECT YOUR HOME FREQUENTLY

HOME SAFETY — CHECK LIST

Bathroom

1. To prevent scalds, do you make it a practice to test the temperature of the water before stepping into the tub or under the shower?
2. To prevent slipping, do you have a rubber mat in the bathtub or a handhold on the wall?
3. Do you always place soap in the container instead of leaving it in the tub or allowing it to remain on the floor after it has been dropped?
4. To avoid electric shock, do you make it a practice not to touch electric fixtures or switches when your hands or body are wet or in contact with a metal object?
5. Do you place the electric heater where it or its cord will not be stumbled over, and disconnect it before retiring or before leaving the room for any length of time?
6. If you use gas for lighting and heating, do you make sure that the gas water heater, gas lights, or other gas appliances are turned off completely before retiring?
7. Are all medicines placed in a cabinet out of reach of small children?
8. Are poisons kept in properly marked containers?
9. Do you always turn on a light and look at the label before taking any medicine at night?
10. Do you promptly and properly dispose of broken glass, used razor blades, etc., in order to prevent cuts and scratches?

CORRECT UNSAFE CONDITIONS PROMPTLY



Kitchen

How many accident causes can you find in this picture? The detector will show you how these causes may be eliminated.

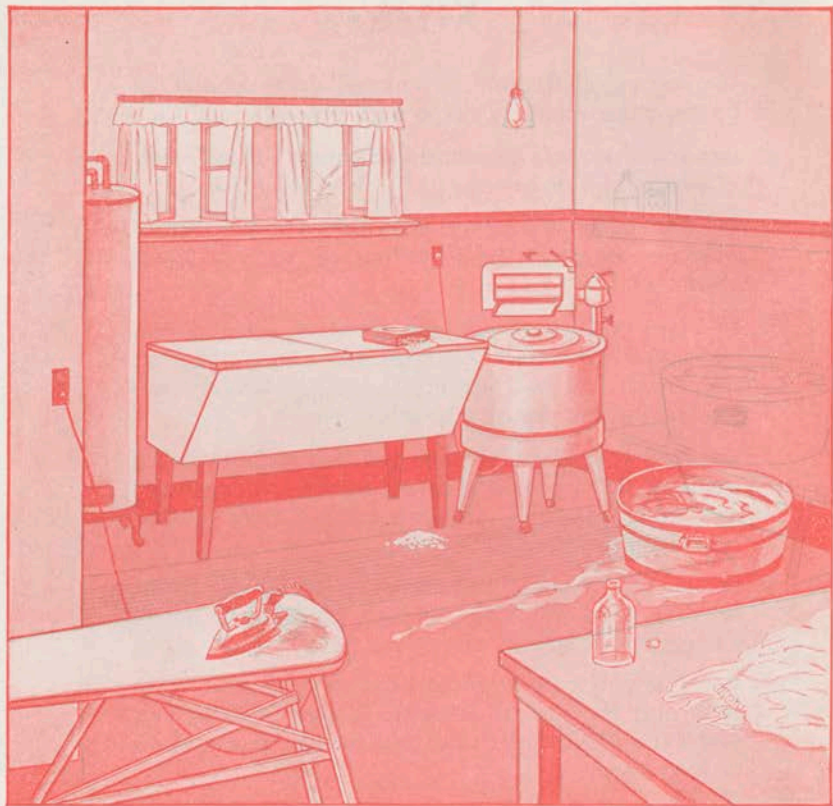
INSPECT YOUR HOME FREQUENTLY

HOME SAFETY — CHECK LIST

Kitchen

1. Do you use short ladders and not stools, chairs, or boxes, when reaching up to high places?
2. Are matches kept in metal containers out of reach of small children?
3. Do you make it a practice to turn the handles of pots and pans on the stove out of reach of small children?
4. Do you always disconnect toasters, percolators, irons, and other electrical appliances, by pulling the plug out of the wall socket after use or before leaving the kitchen for any length of time?
5. Are you careful to prevent gas flames from being extinguished by drafts or by liquids boiling over, and do you fasten curtains so that they cannot blow into the flame?
6. Is the hose for portable gas heating or cooking appliances in good condition, securely connected, and of the approved type?
7. Are you particularly careful in the storage of kerosene and the use of kerosene stoves, and do you make it a rule never to use kerosene to kindle wood or coal fires?
8. Are cleaning fluids and powders kept in safe places and out of the reach of children?
9. Do you keep knives, forks, icepicks, and other sharp instruments in a safe place where children and others will not run into them?
10. Is broken glass or crockery wrapped in old paper before placing in the rubbish container in order to prevent possible cuts?

CORRECT UNSAFE CONDITIONS PROMPTLY



Laundry

How many accident causes can you find in this picture? The detector will show you how these causes may be eliminated.

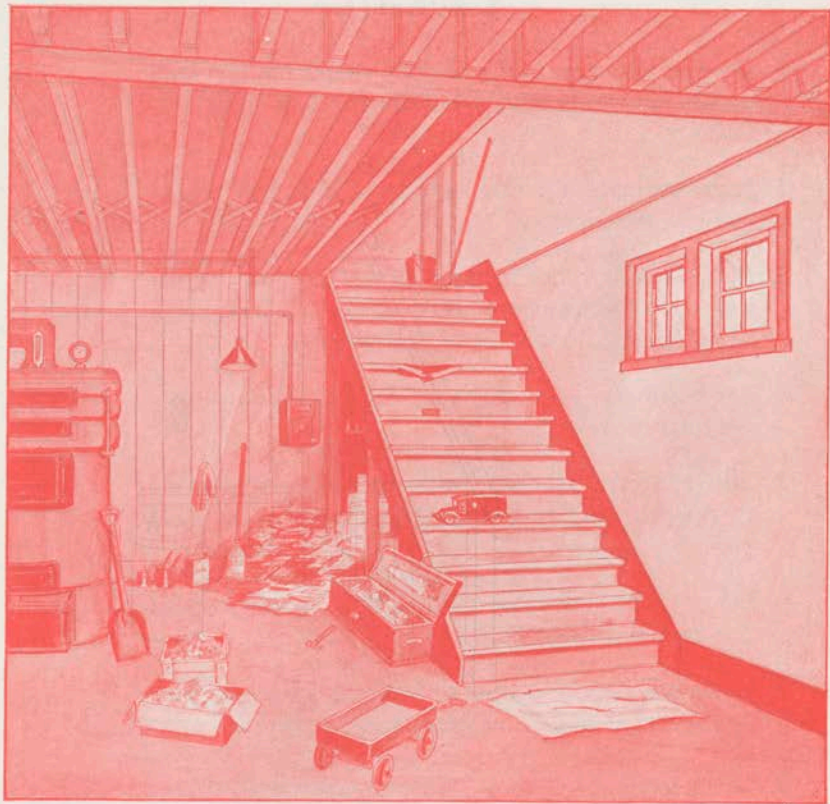
INSPECT YOUR HOME FREQUENTLY

HOME SAFETY—CHECK LIST

Laundry

1. Do you disconnect the electric iron from the wall socket before leaving the room for any length of time?
2. Is moistureproof wiring used on all electrical equipment in the laundry?
3. If the laundry floor is damp or wet, do you provide a wooden platform or rubber mat to stand on when using electric appliances or equipment?
4. Are washtubs so placed that little children cannot fall into them?
5. Is the electric washing machine properly guarded to prevent persons from being caught by moving parts?
6. Do you place hot irons so that they cannot cause a fire or fall while cooling?
7. When the electric washer or ironer is not in use, is it disconnected so that children cannot start it?
8. Is the gas water heater properly connected to prevent leaks?
9. Do you always use noninflammable bleachers or cleaning fluids and then only out of doors where there is ample draft to remove poisonous fumes?
10. To prevent slipping, do you keep soap, soap powders, soapsuds, and water off the floor?

CORRECT UNSAFE CONDITIONS PROMPTLY



Stairs and Basement

How many accident causes can you find in this picture? The detector will show you how these causes may be eliminated.

INSPECT YOUR HOME FREQUENTLY

HOME SAFETY — CHECK LIST

Stairs and Basement

1. Are there handrails on all stairs and are the rails and stairtreads kept in safe condition?
2. Are stairs kept properly illuminated so that the steps can be seen clearly?
3. (a) Are electric switches so placed that stair lights can be turned on or off from top or bottom? (b) If not, have you a safe portable light, particularly for use in the basement? (a)..... (b).....
4. Do you keep stairs and landings free of mops, brooms, cakes of soap, pails, toys, or any other objects over which a person may fall?
5. Are rugs and stair carpeting secured firmly to prevent slipping and kept in repair to prevent tripping?
6. Do you keep tools in safe places?
7. Are gas pipes and gas fixtures inspected to prevent leaks?
8. Are furnace flues and chimneys cleaned regularly to prevent fires?
9. Do you always place ashes in metal containers?
10. Are rubbish, piles of old newspapers, and other inflammable material removed promptly to prevent spread of fires?

CORRECT UNSAFE CONDITIONS PROMPTLY



Yard and Garage

How many accident causes can you find in this picture? The detector will show you how these causes may be eliminated.

INSPECT YOUR HOME FREQUENTLY

HOME SAFETY — CHECK LIST

Yard and Garage

1. Are sidewalks and steps kept in good repair and clear of objects over which people may trip?
2. Is ice or snow removed promptly or covered with salt, ashes, or sand?
3. If the driveway is on an incline, do you always set the brakes of your car and, if necessary, also block a wheel with a chock, or wedge of wood, before leaving the car?
4. Are garden and automobile tools kept in designated places instead of being left lying around in the yard or on the garage floor?
5. Do you make it a practice to place sharp instruments, such as rakes and saws, so that no one can step on or walk into the prongs or cutting edges?
6. Do you see that nails are withdrawn from broken boxes or boards or the nail points hammered flat against the board?
7. Do you keep loose boards or other articles off the rafters of the garage or fasten them securely to prevent falling?
8. If rubbish burning is permitted, do you use covered wire or metal burning baskets?
9. To prevent asphyxiation, do you always open the garage doors before starting your automobile engine?
10. Do you promptly remove oily rags or other inflammable materials from the garage or keep them in fireproof containers?

CORRECT UNSAFE CONDITIONS PROMPTLY

PROVIDE FOR EMERGENCIES

IN ADDITION to the removal of hazards, provision should be made for dealing promptly with emergencies in the home.

Every adult and older child should know the location of the nearest fire-alarm box. In addition, at least one approved fire extinguisher should be kept in a convenient location, particularly in a place where there is a fire hazard, such as the garage or basement.

Although prompt medical attention should be obtained in case of personal injury, every home should be equipped with a first-aid cabinet for emergency use.

Adults and older children, except those living in apartments or hotels, should know where and how to turn off the main supply of water, gas, and electricity in case of emergency.

**TREAT ALL INJURIES,
EVEN MINOR CUTS AND SCRATCHES,
PROMPTLY**



CANADIAN HEAD OFFICE
OTTAWA