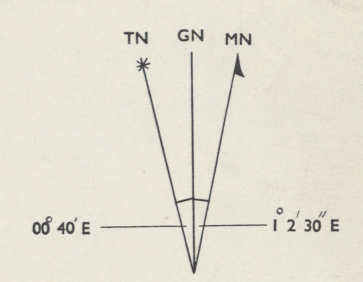
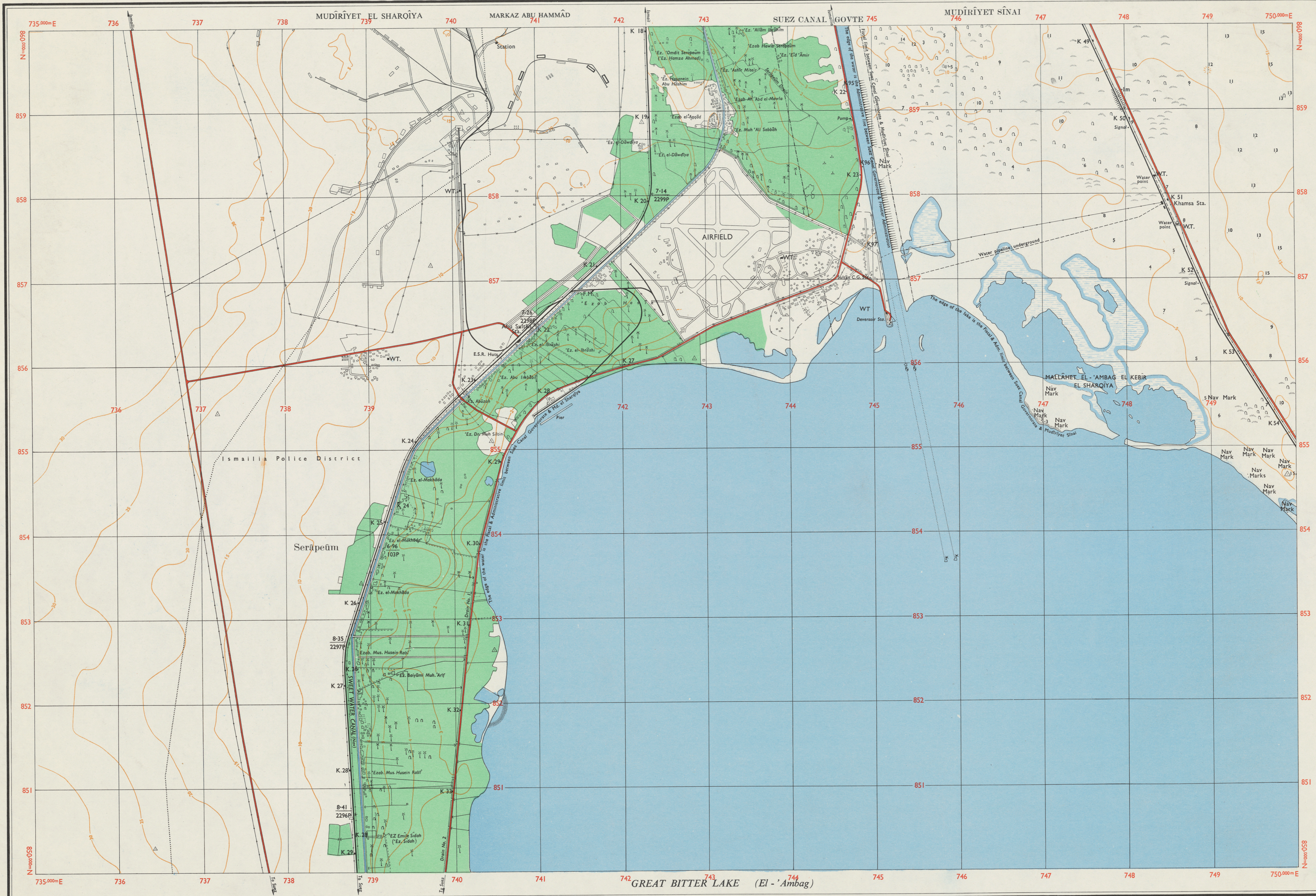


DEVERSOIR STA.



Approximate Mean Declination 1959
at centre of sheet
Annual Magnetic Change 3' 30" E

CONVERGENCE
At the centre of the West edge of
this sheet Grid North is 00' 38"
East of True North.
At the centre of the East edge of
this sheet Grid North is 00' 43"
East of True North.

INDEX TO ADJOINING SHEETS

86/720	86/735
85/720	85/735 85/750
	84/735 84/750

HISTORY NOTE

2nd Survey of Egypt edition reproduced by
S12 Fd. Survey Coy. R.E. 1944.
Revised by S12 Fd. Survey Coy. R.E. 1944.
Revised from Air Photography dated 1955
by 42 Survey Engineer Regt. Oct. 1956.

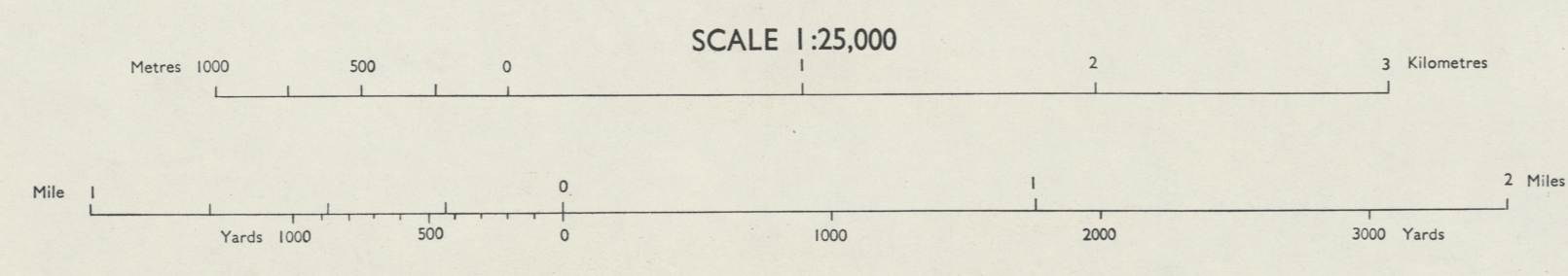
TO GIVE A COMPLETE REFERENCE ON
THIS SHEET TO NEAREST 100 METRES

SAMPLE POINT	WT.
1. Locate first VERTICAL grid line to LEFT of point and read LARGE figures labelling the line either in the top or bottom margin. Estimate tenths from grid line to point:	739
2. Locate first HORIZONTAL grid line BELOW point and read LARGE figures labelling the line either in left, or right margin. Estimate tenths from grid line to point:	856
SAMPLE REFERENCE	7392 8561

IGNORE the SMALLER figures of any grid number: these are for finding the full co-ordinates.
Use ONLY the LARGE figures of the grid number.

Series P 871 - Edition - GSGS 1959
Published by D. Survey, War Office and Air Ministry 1959

- REFERENCE
- Fenced Camp Perimeter
 - Unfenced Camp Perimeter
 - Military Boundaries
 - Markets
 - Governorate
 - House Tax
 - Village
 - Concession
 - Administrative Boundaries
 - Standard Gauge Railways
 - Light Railways
 - Trolley lines
 - Roads Principal
 - Roads suitable for Wheeled Traffic
 - Roads passable
 - Main desert communication Tracks
 - Paths
 - Water Tank



HEIGHTS IN METRES
CONTOUR INTERVAL VARIABLE

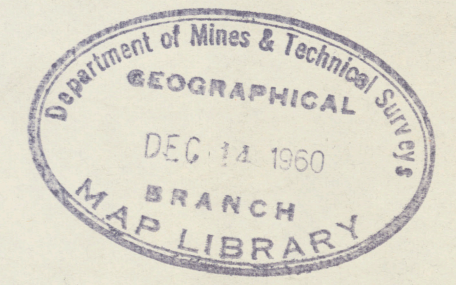
NOTES 1. Heights in metres above Mean Sea Level at Alexandria.
2. Names in parentheses indicate those of local usage.

Any user noting errors or omissions on this map is requested to mark them on a copy and forward direct to D. D. Survey, GHQ, MELF, British Forces Post Office 53. Maps so forwarded will be replaced if desired.

- REFERENCE
- Telephone Line
 - Pipe Line
 - Canals or Drains over 10 metres wide
 - Canals or Drains from 5 to 10 metres wide
 - Canals or Drains from 1.5 to 5 metres wide
 - Wadi and Wadi Spread
 - Moveable Bridges and Locks
 - Large bridges, small bridges
 - Pipes, Aqueducts and Siphons
 - Cemeteries
 - Markets
 - Steam Flour Mills Pumping Engines
 - Cultivation
 - Trigonometrical Points. Spot Heights
 - Bench Marks
 - Contours
 - Antiquities
 - Quarries

Printed by 42 Survey Engineer Regiment, MELF No. 15258 3500/8159

SERIES P 871
SHEET 85/735
EDITION - GSGS



DEVERSOIR STA.

520
25
10
Sheet 85/735