

red

light

and

blue



the red and white revue  
1951

Emmery





Montreal's Leading Merchants for

**COAL • COKE • FUEL OIL**

DISTRIBUTORS OF



**IRON FIREMAN  
AUTOMATIC  
OIL BURNERS &  
COAL STOKERS**

*Farquhar Robertson*

LIMITED

614 St. James St. West

MA. 7511

**O**ver the years it has

become a custom with

discriminating value-wise



Montrealers to shop at

*Simpson's*

**THE ROBERT SIMPSON MONTREAL LIMITED**



# PATRONS

Under the Distinguished Patronage of Their Excellencies the Governor-General,  
who is 'Visitor' of McGill University, and The Viscountess Alexander of Tunis, and

His Worship Mayor Camilien Houde, C.B.E.

CHIEF JUSTICE O. S. TYNDALE

DR. MURIEL V. ROSCOE

DR. F. CYRIL JAMES

PROFESSOR ELMER HALL

DEAN H. N. FIELDHOUSE

MR. T. H. MATTHEWS

DEAN W. C. J. MEREDITH

MR. S. H. DOBELL

DEAN D. P. MOWERY

MR. WILLIAM BENTLEY

DEAN C. D. SOLIN

MR. RICHARD PENNINGTON

DR. G. LYMAN DUFF

DR. J. B. KIRKPATRICK

DR. W. C. PENFIELD

DR. W. H. HATCHER

DR. W. BRUCE ROSS

DR. R. P. VIVIAN

MR. M. LANGLOIS

DR. W. V. CONE

DR. J. S. FOSTER

DEAN DOUGLAS CLARKE

PROFESSOR V. OBECK

DEAN J. J. O'NEIL

PROF. JOHN BLAND

COMPLIMENTS OF

*McDougall & Cowans*

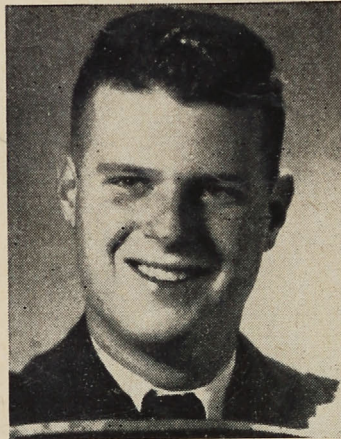




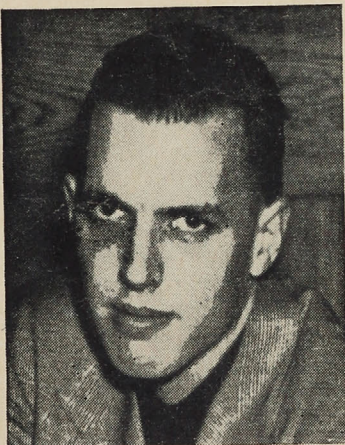
BILL SHATNER  
*Producer and Director*



BILL McCALLUM  
*Associate Producer*

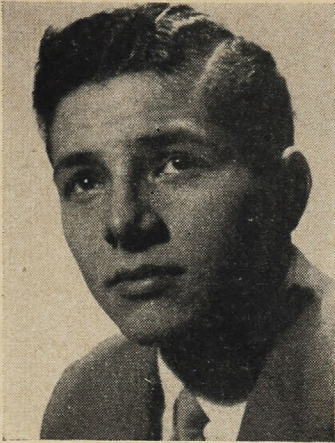


ALFRED POWIS  
*Business Manager*

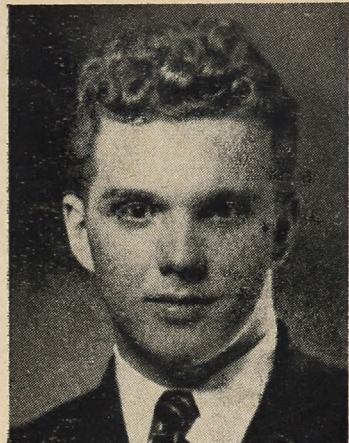


SAM WARREN  
*Technical Director*

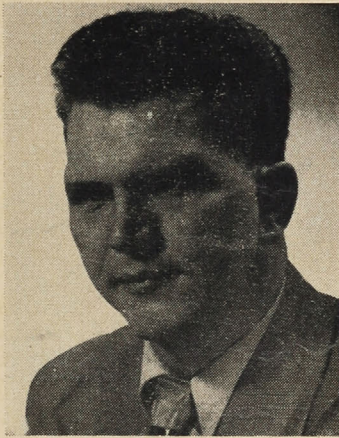




LIONEL CAPLAN  
*Script Co-ordinator*



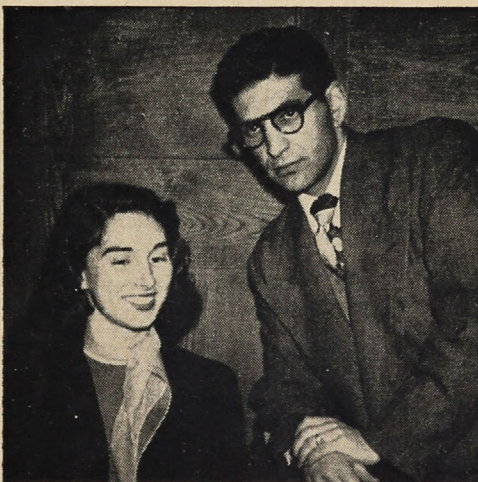
BOB GRAHAM  
*Publicity Director*



ROY DOHN  
*Musical Co-Director*



SAUL HONIGMAN  
*Musical Co-Director*



RUSTY MENDELL & LARRY SIMON  
*Costume Executors*



BARBARA WARREN MARJORY ROOT  
*Personnel Manager Secretary*



# MOLSON'S REMEMBERS...



## Burnside House

James McGill's country residence, described in 1804 as being "about a Mile from Town with a most excellent garden", stood near what is now the corner of Burnside Place and McGill College Avenue.

It was part of the estate which McGill bequeathed "for the purpose of education and the advancement of learning in this province".

*Molson's*  
ESTABLISHED IN MONTREAL  
IN 1786



THE RED AND WHITE REVUE

*presents*

**"RED LIGHT & BLUE"**

A Musical Comedy

Produced and Directed by WILLIAM SHATNER

*Book Conceived by:*

LIONEL CAPLAN AND ARTHUR WEINTHAL

*Music and Lyrics by*

ROY DOHN, SAUL HONIGMAN, JACK  
RICHER, SOL TOLCHINSKY, LIONEL  
CAPLAN, BRIAN MACDONALD

*Choreography by*

BRIAN MACDONALD

*Settings by*

SYLVIA SINGER AND DON COWAN

*Orchestrations by*

ROY DOHN AND SAUL HONIGMAN

*Costumes by*

RUSTY MENDEL AND LARRY SIMON

Musical Numbers Staged by—BILL SHATNER AND BRIAN MACDONALD

Associate Producer.....BILL MCCALLUM  
Assistant Producer.....ARTHUR WEINTHAL  
Business Manager.....ALFRED POWIS  
Technical Director.....SAM WARREN  
Publicity Director.....BOB GRAHAM  
Secretary.....MARJORY ROOT  
Assistant Director.....BOB ROBINSON  
Assistant Technical Director.....BERNARD LAX  
Script Coordinator.....LIONEL CAPLAN  
Personnel Manager.....BARBARA WARREN



PLAYER'S MILD NAVY CUT  
NAVY CUT CIGARETTES MILD

PREVENT FIRES  
ENJOY IT  
Then BE SURE IT'S OUT

Player's  
Please  
always

Mild or Medium  
PLAIN and CORK TIP



# CAST

Detective Ryan .....	LANG DESJARDINS
Detective Clancy .....	MURRAY HYATT
Police Chief .....	ORRIN MALDOFF
Miss Beaurepaire .....	BARBARA WARREN
Spade, an aide .....	LARRY SOLON
Sergeant Langlousse .....	LARRY SCHACTER
Policeman .....	TED ALEXANDER
Husband .....	BILL MCCALLUM
Wife .....	MARJORY ROOT
Barbotte Basil .....	ARTHUR WEINTHAL
Tor .....	SOL TOLCHINSKY
Pedo .....	RUBE BRESSLER
The Face .....	GEORGE SPELVIN
Atlantique Rant .....	DAVE WOOD
Gwen .....	JULIA ANNE HOLDEN
Contest Judge .....	DOUG COHEN
The Contestants .....	NELL HALSTEAD, PAT WAINWRIGHT, GEORGINA SPELVIN, LALLIE KAVANAUGH
The Prisoner .....	ANN GIRARD
The Matron .....	LINDA BALLANTYNE
Barbara Ann Slott .....	CLAIRE GILL
Her Mother .....	SHEILA RODGERS
Jean L. Sullivan .....	NAN BISHOPRIC
Files .....	GERRY GROSS
The Specimen .....	TOM KELHIER
Seizer Beanbody .....	DAVE WOOD
Ma Pott .....	SHEILA RODGERS
Pa Pott .....	BOB ROBINSON
Colonel Snuff .....	DUNCAN FRAZER
His Wife .....	NELL HALSTEAD



# EATON'S



Your  
unqualified protection  
against the question marks  
of shopping

is the famous

**EATON** Guarantee  
"Goods Satisfactory  
or Money Refunded"

T. EATON CO. LIMITED



Discount ..... DEREK SPEIRS

Artist ..... BILL McCALLUM

His Fan ..... LALLIE KAVANAUGH

Gendarme ..... TOM KELHIER

Vic ..... LARRY SCHACTER

Files' Second ..... LINDA BALLANTYNE

Civilian ..... LARRY SOLON

The Daughters of the Revolution:

Portia ..... LINDA BALLANTYNE

Gertrude ..... MARJORY ROOT

Desdemonia ..... MARGO BLATT

Ophelia ..... BARBARA WARREN

Slob ..... JACKY BEAUDOIN

Viola ..... ANN GIRARD

The 'Landlady' ..... ANDREA RICHARDSON

Monsieur le Maire ..... DUNCAN FRASER

Chorus Dancers

GRACE GREENBERG, PAT HARRIS, BARBARA FARR, ELEANOR FOX, CLAIRE GILL, SHEILA HEY, LOIS MARCOU, DIANNE McNICOLL, JOAN NOSEWORTHY, RENI ROBERTS, ADA STEARNS, VALERIE WILDE, VALERIE GRAHAM, RUTH MARGO, JOAN McCAHEY, BILL BAKER, TAKIS ARGYROPOULOS, HY DONNENFELD, VINCENT GIEDRAITIS, ROBIN MACKAY, JOE PAUL, MIKE REBOLLEDO, DEREK SPEIRS.

CREDITS

The McGill Red and White Revue wishes to express its appreciation  
for the cooperation given by  
Henry Morgan and Co., Ltd.  
The Montreal Police Department  
Austin Sales and Service

PHOTOGRAPHY BY BERNARD LAX-LA VANNE STUDIOS





PART OF THE CHORUS

Make Your Date NOW — for the

## *McGill Winter Carnival*

*FEBRUARY 15th to 17th*

Thursday Night - Mount Royal Mountain

Friday - Up North at St. Sauveur

Friday Night - Ice Festival, Forum

Saturday Afternoon - Ski Jump

Saturday Afternoon - Cabaret at U of M

Saturday Night - Carnival Ball

### **CAFE MARTIN**

Canada's Finest French Restaurant

#### **Famous Sea FOOD Bar**

Completely Air Conditioned  
Crepes Suzette a Specialty

**1521 MOUNTAIN STREET**

LEO DANDURAND, President  
MA. 7525

### **NYMARK'S LODGE**

**ST. SAUVEUR**



*Headquarters*

**McGILL WINTER CARNIVAL**

**Feb. 15-16-17**

**14 Ski Tows and Alpine Lift**

**Tel. 3018**



SEQUENCE OF SCENES AND MUSICAL NUMBERS

ACT ONE

*Scene 1* MAIN STREET (A Beautiful September Morn)

“Traffic is the Heartbeat” . . . . . *Music and lyrics by Saul Honigman*

“Our Gallant Force” . . . . . *Music and lyrics by Saul Honigman*

*Sung by* THE CAST

*Scene 2* BOUDOIR (A dozen rounds of applause later . . . ) . . . . . *Dial. by Caplan*

*Scene 3* STATION NO: 1 (Same day—afternoon) . . . . . *Dial. by Caplan*

“Promotion Song” . . . . . *Music by Saul Honigman*  
*Lyrics by Sandra and Saul Honigman*

*Sung by* LANG DESJARDINS *and* MURRAY HYATT

*Scene 4* A LOCAL COAL BIN (Later) . . . . . *Dial. by Weinthal*

*Scene 5* STATION NO. 1 (Night has fallen) . . . . . *Dial. by Caplan and Rotman*

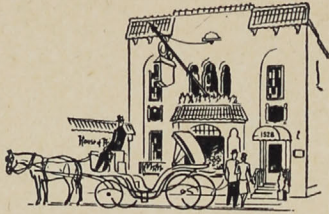
“Lawyers in the Bygone Ages” . . . . . *Music by Jack Richer and Roy Dohn*  
*Lyrics by Sol Tolchinsky*

*Sung by* DAVE WOOD

“Should I Believe” . . . . . *Music and lyrics by Roy Dohn*

*Sung by* LANG DESJARDINS





# House of Flowers

SHERBROOKE AT MOUNTAIN  
PLATEAU 4444

FRANK J. McKENNA

FRANK R. McKENNA



## 10 Smart Specialty Shops

- SPORTSWEAR
- LINGERIE
- ACCESSORIES

*Canada's  
First Bank*



**BANK OF  
MONTREAL**

*working with Canadians in every walk of life since 1817*



BOB ROBINSON, BERNARD LAX, ART WEINTHAL



Scene 6 MESSEY HALL (Next day)

*Dial. by Caplan, Weinthal, Hitzig and Mortimer*

“We’re Downhearted”..... *Music and lyrics by Roy Dohn*

*Sung by ANN GIRARD, LINDA BALLANTYNE, CLAIRE GILL, PAT WAINWRIGHT,  
LALLIE KAVANAUGH, NELL HALSTEAD*

Scene 7 100 YARDS LATER..... *Dial. by Barbara Bain*

“You Don’t Know”..... *Music and lyrics by Saul Honigman*

*Sung by NAN BISHOPRIC and MURRAY HYATT*

Scene 8 THE CHIEF’S HOME..... *Dial. by Caplan*

“I Like the Guy”..... *Music and lyrics by Roy Dohn*

*Sung by JULIA ANNE HOLDEN*

Scene 9 THE SHALAIT LOOKOUT ATOP THE TV HILL

*Dial. by Ann Girard and Caplan*

“Baby, You’re Mean To Me”..... *Music and lyrics by Roy Dohn*

*Sung by LOIS MARCOU and ERNIE LUTTERMAN*

“Orchestra Play”..... *Music and lyrics by Saul Honigman*

*Sung by JULIA ANNE HOLDEN and LANG DESJARDINS*

“Royal Commission”..... *Music by Roy Dohn  
Lyrics by Brian Macdonald*

*Sung by THE CAST*

*Dance duet in this scene by MARJORY ROOT and BRIAN MACDONALD*



## THE SHOW MUST GO ON . . . . . *Why?*

A NOTABLE COMIC ONCE SAID *the show must go on because a number of people known as producers, angels, etc., had a lot of money invested in the show and a larger number of people . . . known as the (cough) audience, the public . . . etc., had bought tickets for the show and would like to see it very much . . . Furthermore, the producers would hate like hell to see all that money refunded that has been paid in for admission . . . but here we are . . . the producers of this show have nothing invested . . . not even talent . . . and the angels have already received their money . . . \$15.00 a head from each and every unfortunate student of this University . . . so why must this show go on?*

**HERE'S WHY . . .** We have a tradition to uphold. To ourselves, to the school, and to something called *the theatre*. The comic who inferred that the receipts was reason for the show going on was "making a funny". He said that because it was the only thing his audiences understand. He didn't say anything of the duty the performers have to the . . . show, . . . the other players . . . to the long-standing tradition of that hackneyed phrase "the show must go on".

This school has seen a Revue for some thirty years and, the international situation being what it is, this show may be the last for some time . . . even the Stone of Scone is not secure. And . . . we have all accepted positions, whether it be scriptgirl or producer, each with their own responsibilities . . .

So, it may be said with consummate security . . .

### *The Show Shall Go On:*

CANADA'S LARGEST RESTAURANT  
ACCOMMODATION 600

*The Showplace of Montreal*

**RUBY  
FOO'S**

CONTINUOUS ENTERTAINMENT  
NIGHTLY IN THE STARLIGHT ROOF

Complete Revue at 10, 12 and 2

3 COCKTAIL LOUNGES  
2 DINING ROOMS

**7815 DECARIE BLVD.**

12 minutes from the centre of the City  
Never a Parking Problem

**Tel. EX. 6533**

***THIS AD IS WORTH MONEY  
TO ALL MCGILL STUDENTS***

CUT IT OUT AND KEEP IT

Marcel le Mat will give a 15 percent  
discount to all students who carry this ad.

*marcel le mat*

*flower shop*

1314 St. Catherine St. West

PLateau 8545  
if no answer  
DOLLard 4434

FANCY FRUIT BASKETS  
BONBONS  
IMPORTED CHOCOLATES



ACT TWO

Scene 1 HOME OF THE DAUGHTERS OF THE REVOLUTION

*Dial. by Caplan*

"Us Girls"..... *Music by Jack Richer and Roy Dohn*  
*Lyrics by Lionel Caplan*

*Sung by* LINDA BALLANTYNE, MARJ. ROOT, ANN GIRARD, BARBARA WARREN,  
MARGO BLATT, *and* JACKY BEAUDOIN

"Warm Up"..... *Music by Brian Macdonald and Saul Honigman*

Reprises of: "Baby You're Mean To Me" and "You Don't Know"

*Danced by* THE CHORUS

Scene 2 SOMEPLACE, SOMETIME, SOMEWHERE ... (... Later)

*Dial. by Weinthal*

"Cops 'n Us"..... *Music by Roy Dohn*  
*Lyrics by Sol Tolchinsky*

*Sung by* SOL TOLCHINSKY *and* RUBE BRESSLER

Scene 3 ... AND THEN THEY DREAM

*Dial. by Caplan*

"Haunting Rhythm"..... *Music and lyrics by Saul Honigman*

*Sung by* JULIA ANNE HOLDEN *and* LANG DESJARDINS

*Dance by* PAT HARRIS, BRIAN MACDONALD *and* THE CHORUS



**YOU TOO**

*Can Be An Intellectual  
In The Privacy Of Your Home...*

**Don't Let Your Low-Brow  
Friends Intimidate You.**

**BUY YOUR BOOKS FROM  
LIEBER'S BOOK SHOP**

2058 VICTORIA STREET • LA. 4392  
*(next to the Union, opposite the Shrine)*

**CASE**

*TWO SPECIALTY SHOPS  
FOR MEN AND  
WOMEN WHO SHOP FOR MEN*

1115 ST. CATHERINE STREET WEST  
and  
HENRY MARKS LTD.  
Mount Royal Hotel

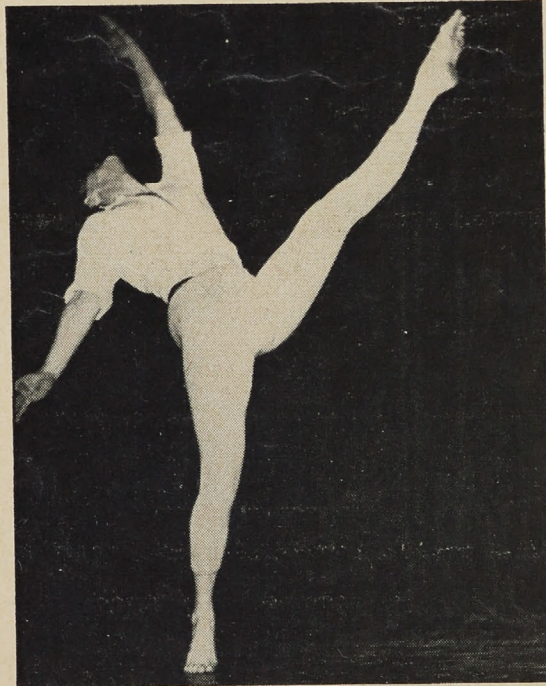
*Service and Satisfaction*

**GORDON W. ROSS** *Printers and Stationers*

LETTERPRESS and OFFSET PRINTING - MULTIGRAPHING - ADDRESSING

4075 Harvard Avenue, Montreal

Telephone DExter 7733



**BRIAN McDONALD**

*in rehearsal*



Scene 4 THE SULLIVAN LIVING ROOM (Half an hour later) *Dial. by Caplan*

Scene 5 THE LOOKOUT AGAIN (... the next Saturday) . . . . *Dial. by Caplan*

Reprises of:

“Lawyers in the Bygone Ages”

“I Like the Guy”

“Should I Believe”

“Royal Commission”

“Orchestra Play”

“Our Gallant Force”

*Sung by* DAVE WOOD, JULIA ANNE HOLDEN, LANG DESJARDINS *and* THE CAST

FUEL OIL — COAL — COKE

GENERAL MOTORS “DELCO-HEAT” OIL BURNERS

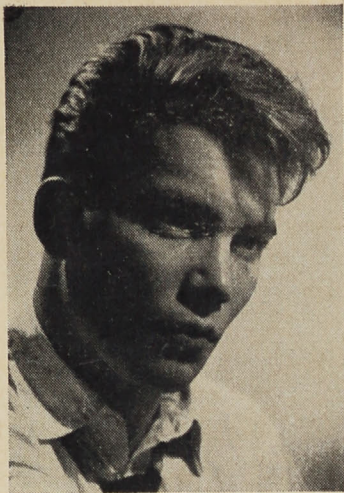
Sold, Installed and Serviced

**Vipond-Tolhurst Limited**

845 Querbes Ave., Outremont.

TAon 7271





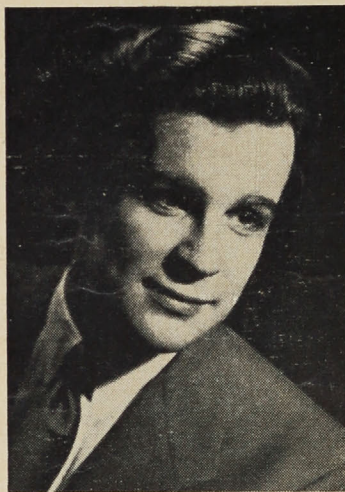
"RED LIGHT & BLUE" is produced and directed by BILL SHATNER, who, like most of his colleagues, intends to make a career of showbusiness. Already this young Commerce student is well-known in the professional theatrical world as a competent radio, stage, and screen actor. Besides his affiliation with the Red and White Revue, he is also production director of the McGill Radio Workshop.

Bill started his career with the Children's Theatre: he worked for the Drama Playhouse, for several of the English Department productions, and for the Open Air Playhouse under Komisarjevsky. Radio was another part of the entertainment world that intrigued this serious young artist and after some years as an amateur he has now attained professional standing.

He was also cast in "The Butler's Night Off" produced by Renaissance Films, and took part in the three Television experimentals here at McGill. His biggest success to date has been the role Judge Wargrave in "Ten Little Indians".

BRIAN MACDONALD, choreographer for "Red Light & Blue" is a native Montrealer, who graduated from Westmount High School in 1944, and later spent five years at McGill. He started to dance seriously several years ago, as a pupil of Gerald Crevier of Montreal, a student and dancer with the Sadlers Wells Company in England, and has studied with Francoise Sullivan, George Carden, and Elizabeth Leese. In the summer of 1947 he was a teacher and exhibition dancer with the Arthur Murray Studios. He is presently music critic on the Montreal Herald.

Brian has studied both classical ballet and modern dance, however he expects to make a career of his ballet and hopes to continue his studies with the Royal Academy of Dancing in England in the near future.



MR. SAUL HONIGMAN, Music Co-Director, will receive his Bachelor of Music Degree in serious composition on graduation this year.

Among his past works he has to his credit an original Canadian light opera "Les Carignons", performed in 1948. One of his more serious compositions is "The Ugly Duckling", a fairy-tale suite for violin and piano. Mr. Honigman has shared the musical arrangements for "Red Light & Blue" and is directing the orchestra. His original numbers in the show are: "Traffic is the Heartbeat of Our City", "Our Gallant Force", "Promotion Song" (with collaboration on lyrics by his wife, Sandra), "You Don't Know", "Orchestra Play", and the "Waltz Impromptu" included in the ballet sequence of his "Haunting Rhythm". Saul intends writing music for stage, motion pictures, and television as a career.

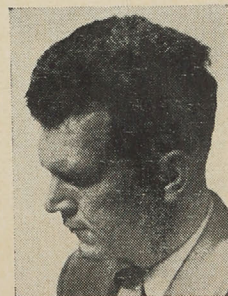


MR. ROY DOHN, final year dentistry student, is the Co-Director of Music for "Red Light & Blue". No newcomer to show business, Roy wrote and directed the music for the McGill Army Show of 1942, was Assistant Music Director for the Revue of 1945 and has contributed music to Revues from 1945 to 1948.

On the serious side, Mr. Dohn has composed two masses as well as a choral rhapsody which is to be performed in the spring by the McGill Choral Society.

Roy is the author of "Hurray For Old McGill", and plays saxophone and clarinet in the "Westernaires" orchestra.

For "Red Light & Blue", he has composed "Should I Believe My Eyes", "I like the Guy", "Royal Commission", "Cops 'N Us", "Baby, You're Mean To Me", and "We're Downhearted", as well as arranging and copying most of music for the orchestra.





# PRODUCTION PERSONNEL

## PROGRAM BY:

Ted Tilden

## PUBLICITY

Bob Graham, *Director*  
Irwin Guttman  
Alex Mayers  
Bernard Lax  
Terry Gahan  
Barbara Brown  
Len Wisse  
Spence Skelton

## BUSINESS and TICKETS

Alf. Powis, *Manager*  
Linda Ballantyne

## COSTUME DESIGN and EXECUTION

Rusty Mendel, } *Directors*  
Larry Simon, }  
Pat Giberson  
Molly Allan  
Sheila Horn  
Ada Stearns

## ORCHESTRA

Saul Honigman, *Conductor*  
Jean-Paul Major, *Flute*  
Gerald Danovitch, *alto sax*  
Jimmy Brigel, *Alto sax*  
Art Arduini, *Tenor sax*  
Bill Deacon, *Tenor sax*  
Gerald Gagnier, *Trumpet*  
Roland Leclaire, *French horn*  
Joe Zuskin, *Trombone*  
Ed Asaly, *Piano*  
Gus Belle-Isle, *Bass*  
Sid Cohen, *Drums*

## MAKEUP

Bob Giles, *Director*  
Mary Ann Cains  
Caroline Curtis  
Marg. Hanly  
Jill Hutchison  
Sally Ginsberg  
Rhoda Crelinsten  
Martha McCutcheon  
Kay Hunter

## TECHNICAL

*Director*

Sam Warren

## Set Construction:

Don Cowan, *Director*  
Gibson Brown  
Dave Gould  
Barbara Warren  
Morty Rubin  
Martin Graef

## Set Painting:

Sylvia Singer, *Director*  
Margo Cohen  
Nancy Petry  
Ann Drury  
Betty Judge  
Audrey Capel  
Anne Marie Teuscher  
Judy Lee  
Lynn Duke  
Valerie Wilde  
Berry Shine  
Honey Beutel  
Barbara Markham

## Properties:

Dan Sullivan, *Director*  
Pat Brodeur  
Esther Pierce  
Lucille Scott  
Margaret Barker  
Mary Dyer  
Sandra McDougall  
Jean Ann Perry  
Lyman May  
Marg. Schacter

## Lighting:

Bernard Lax

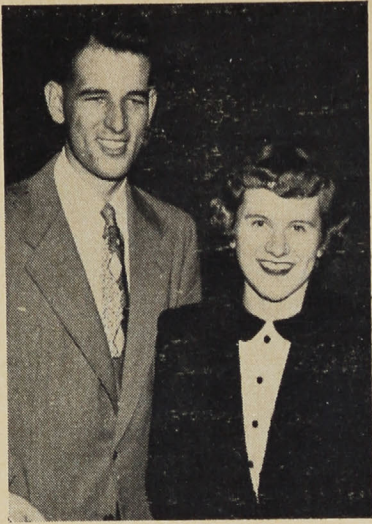
## Chief Crewman:

Hilly Jason

## House Manager:

Jim Packham





Another of the "Revue" veterans featured in this year's production is LANG DESJARDINS who plays the male lead. He played in the shows of 1948 and 1949, missing last year's show because of illness. Lang has done his serious studying with A. J. Brossard during the past three years and he has done a lot of solo work with choral groups in Montreal as well as singing with the "Westernaires" orchestra. Lang intends to continue his voice studies after graduation with an eye to a professional career.

JULIA ANNE HOLDEN, the pert songstress of the Revue is by no means a new-comer to the stage, having appeared in dozens of shows and plays. Although originally a dancer, having studied under Miss Hilda Galt for ten years, Julia has now turned to a serious study of music at the McGill Conservatory.

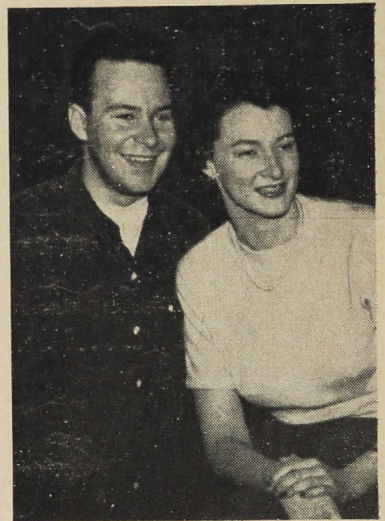
Miss Holden has been starred in productions of "Brae Manor" and the M.R.T. She also appeared in the Revue's "Subway or Other". Besides her music studies at the conservatory, Miss Holden is in the faculty of Arts where she is majoring in psychology.

MURRAY HYATT, nineteen year old Brooklynite, plays the rôle of Detective Ryan, the male comedy lead in the 1951 production of the Red and White Revue.

Mr. Hyatt's stage eminence stems from his success in "Miracle of Danube" and by winning the coveted dramatic trophy competed for in the YMHA "Nights of Plays". Murray has done a considerable amount of radio work, dating back to his high-school days. A third year Arts student, he hopes to enter the faculty of Medicine.

"Miss Sewage Disposal of 1951", the female comedy lead of "Red Light & Blue" is in the capable hands of MISS NAN BISHOPRIC. A native of Quebec City, this is her fourth year in McGill's Faculty of Arts. Besides appearing in the Red and White Revue during the past three years, Miss Bishopric played the lead in the English Department's production of "As You Desire Me" and was also cast in "Macbeth" and "Skin Of Our Teeth."

Upon completing her undergraduate work at McGill this year, she plans to study for a Master of Drama degree in the U.S.A.



The Revue wishes to express its thanks to all those whose names did not appear due to lack of space

Advertising placed through McGill Advertising Board

Compliments of

**S. W. Howarth Ltd.**

1444 St. Catherine St. W.

Wine and Dine at the Shrine  
Where You Can Have Fun Any Old Time

**CAFE ANDRE**

2077 Victoria St., Montreal

Rod. Racicot, Prop.



at the

# PENTHOUSE

featuring nightly performances

by

**OWEN & MURRAY**

and their **DIZZY DITTIES**

atop the

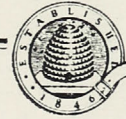
## Windsor

### STEAK

## House

FAMOUS FOR STEAKS, SEA FOOD  
AND FINE BEVERAGES.

1194 PEEL STREET



DEPOSIT YOUR SAVINGS WITH  
THE MONTREAL  
**CITY & DISTRICT**  
SAVINGS BANK

THERE IS A BRANCH IN YOUR VICINITY

“SAFETY DEPOSIT BOXES”

THE ONLY  
SAVINGS BANK  
IN MONTREAL

*When you think of  
Life Insurance  
think of*



**Eric N. Newton**

Representative

**SUN LIFE OF CANADA**

Mount Royal Branch

Montreal





THE MACDONALD LASSIE

0000 - 2230 / 1

32 2 3 7