





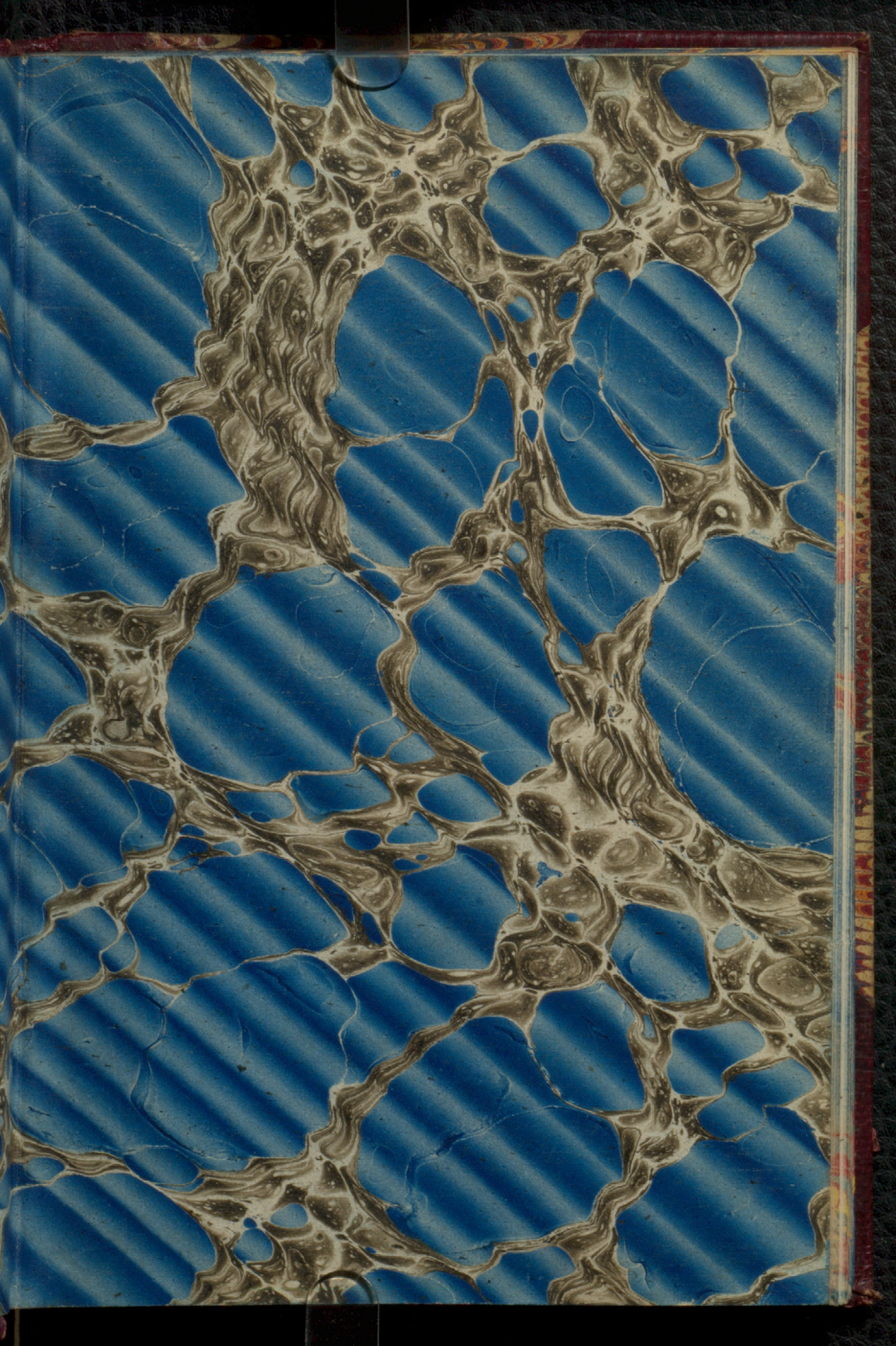


The image shows the front cover of an antique book. The cover is decorated with a vibrant blue background and a complex, organic marbled pattern in shades of cream and brown, resembling stone or biological tissue. A decorative border in red, gold, and blue runs along the edges. In the center, a diamond-shaped label is pasted, featuring a crown at the top and a small emblem at the bottom. The text on the label is arranged in a circular fashion around the central text.

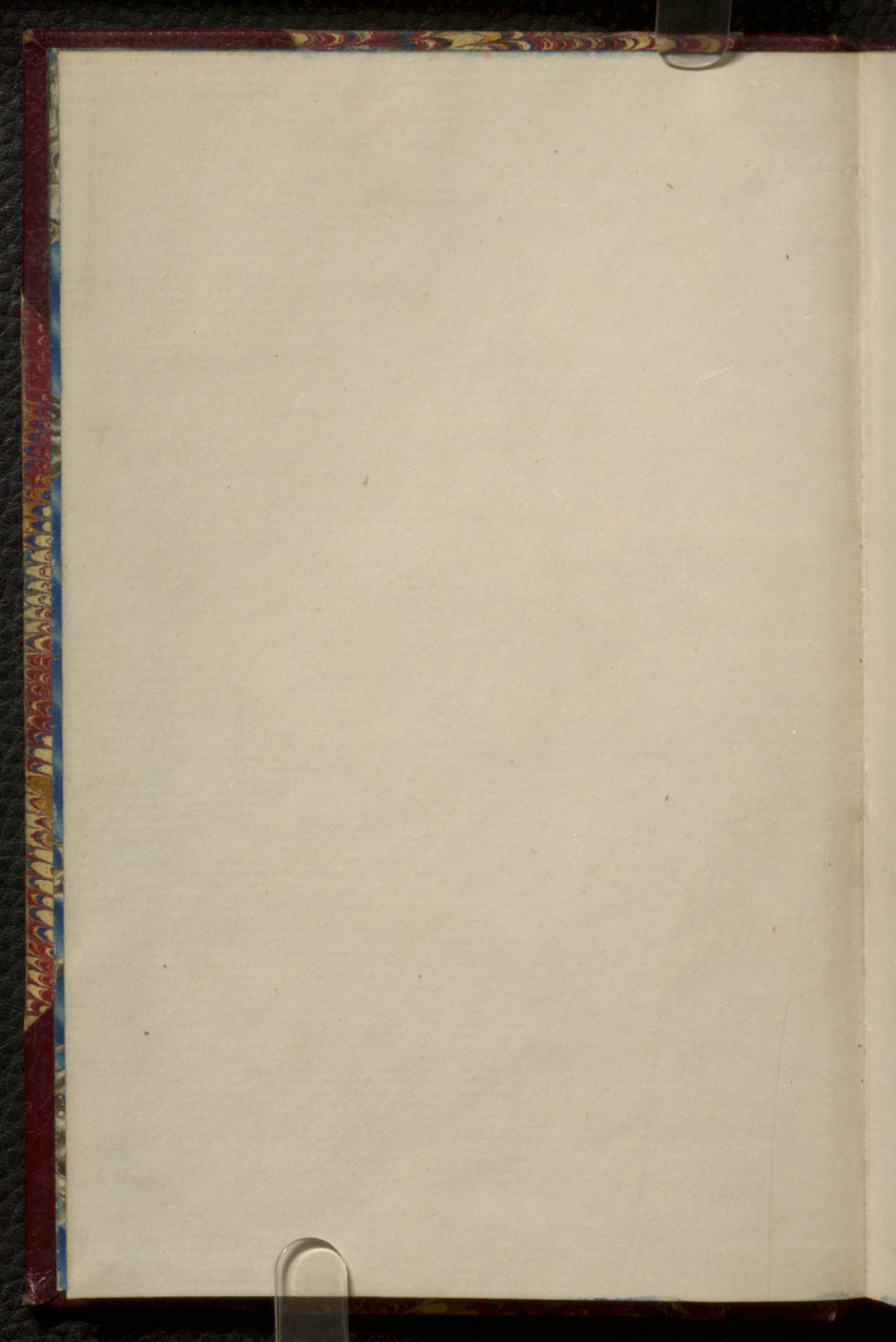
JOHN GOSWELL, 20 & 46 GOSWELL STREET, LONDON, E.C.

BOOKSELLER,  
**BOOKBINDER,**  
STATIONER, ENGRAVER & PRINTER,  
MANUFACTURER OF ACCOUNT BOOKS,  
POCKET BOOKS, CARD-CASES & PURSES,  
BINDING FOR THE TRADE.











WRIGHT

Book I



1875-76

Materia Medica.

Professor Wright.

Monday Nov. 8<sup>th</sup> - 75 -

Sulphuric Acid

Sulphate of Iron -

3 varieties - as to the ordinary.

Preparation

Properties -



Nov. 9<sup>th</sup>

$FeO, S_2$  & its uses in medicine

Other salts formed by using this

dealt with <sup>carb. of iron.</sup>  
Citrates of iron. <sup>in supps. usually buff.</sup>

Preparation

Uses in medicine.

Cit. of iron & Quinine

do do

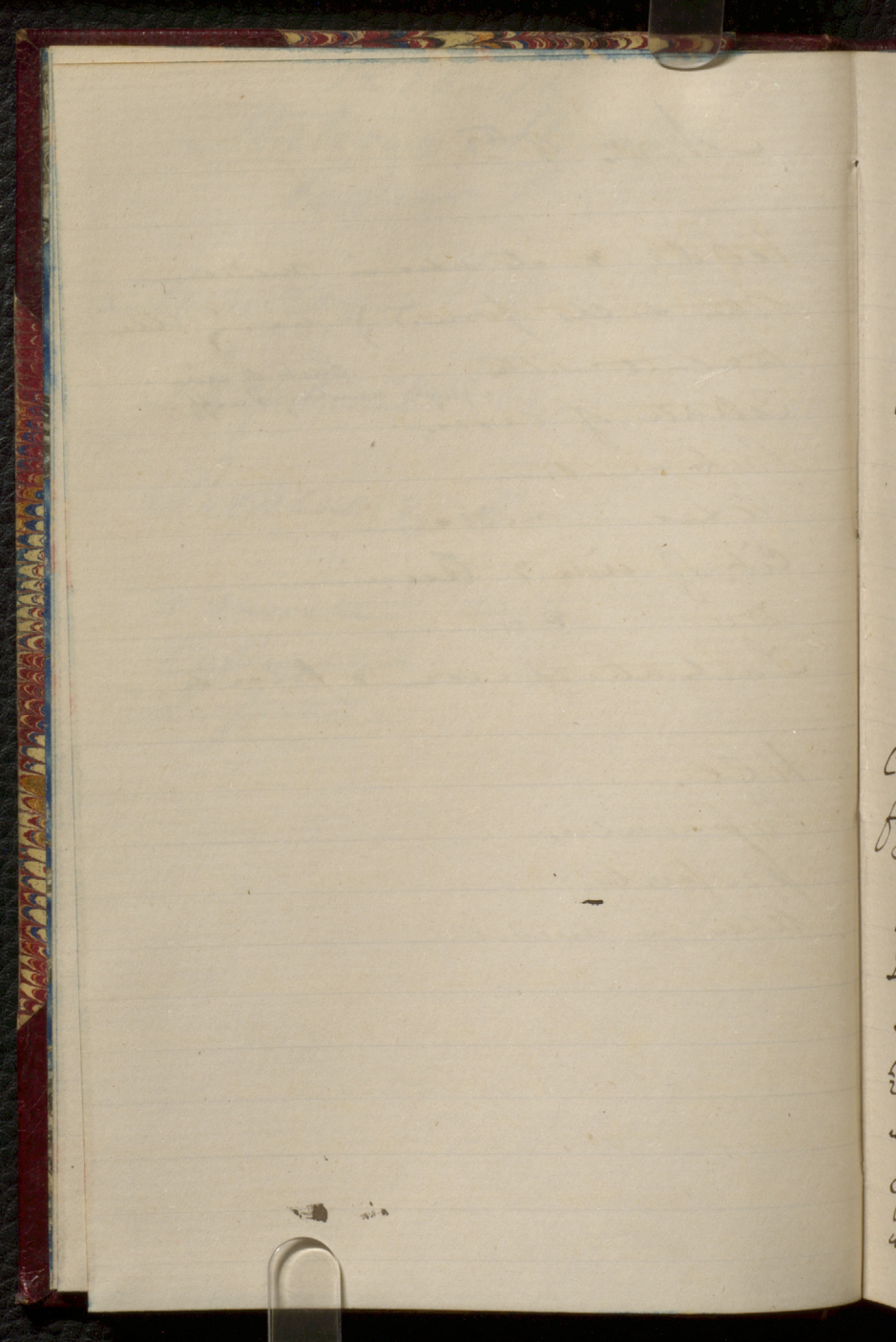
Tartrate of iron & Potash.

HCl.

Preparation

Properties

Uses in medicine





Nov. 10<sup>th</sup> 1875.

Hy?d. acid - compare H<sub>2</sub> & Cl. profts.  
charact. of pure acid - sp. gr. boiling pt.

Tests for recognizing it.

Physiological charact.

Proof of comp. - by K. in flask. KCl. & H<sub>2</sub>  
Analytical } - by  $\nabla$  tube & condenser  
                  } galvanic battery. 2 acids  
                  } eliminated, one at each.

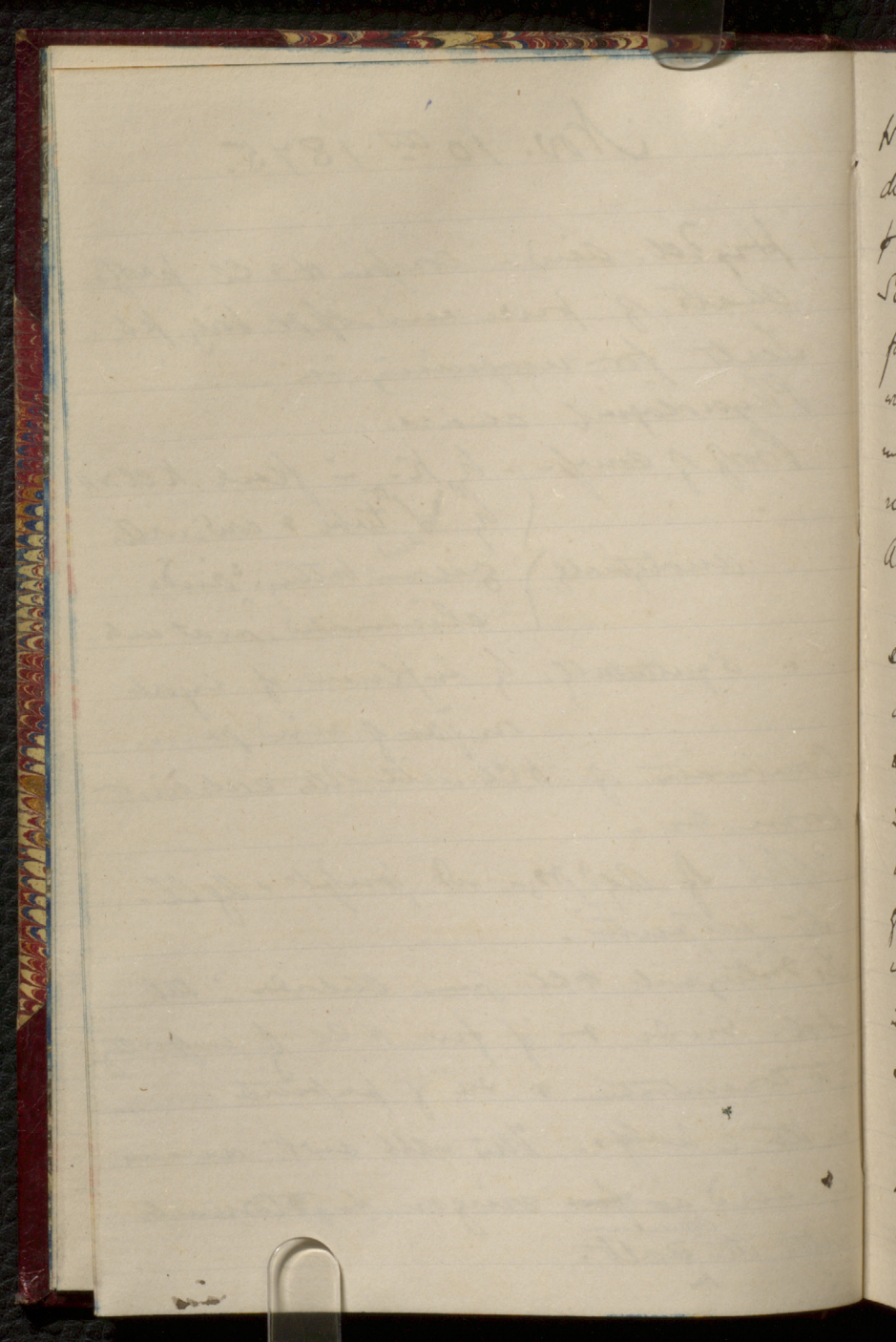
" Synthetically. by influence of light  
on pair of mixed gases.

Combination of HCl with other substances  
form etc.

Effect of AgO, NO<sub>2</sub>, wt. paper - AgCl -  
its properties.

Is distinguishable HCl. from chloride: take  
sol. divide & if few HCl of impurity  
 $\frac{1}{2}$  to concentration & see if precipitate emerges  
in the 2 halves. This will not occur  
if acid as from vinegar in stomach  
with the salt.

✓



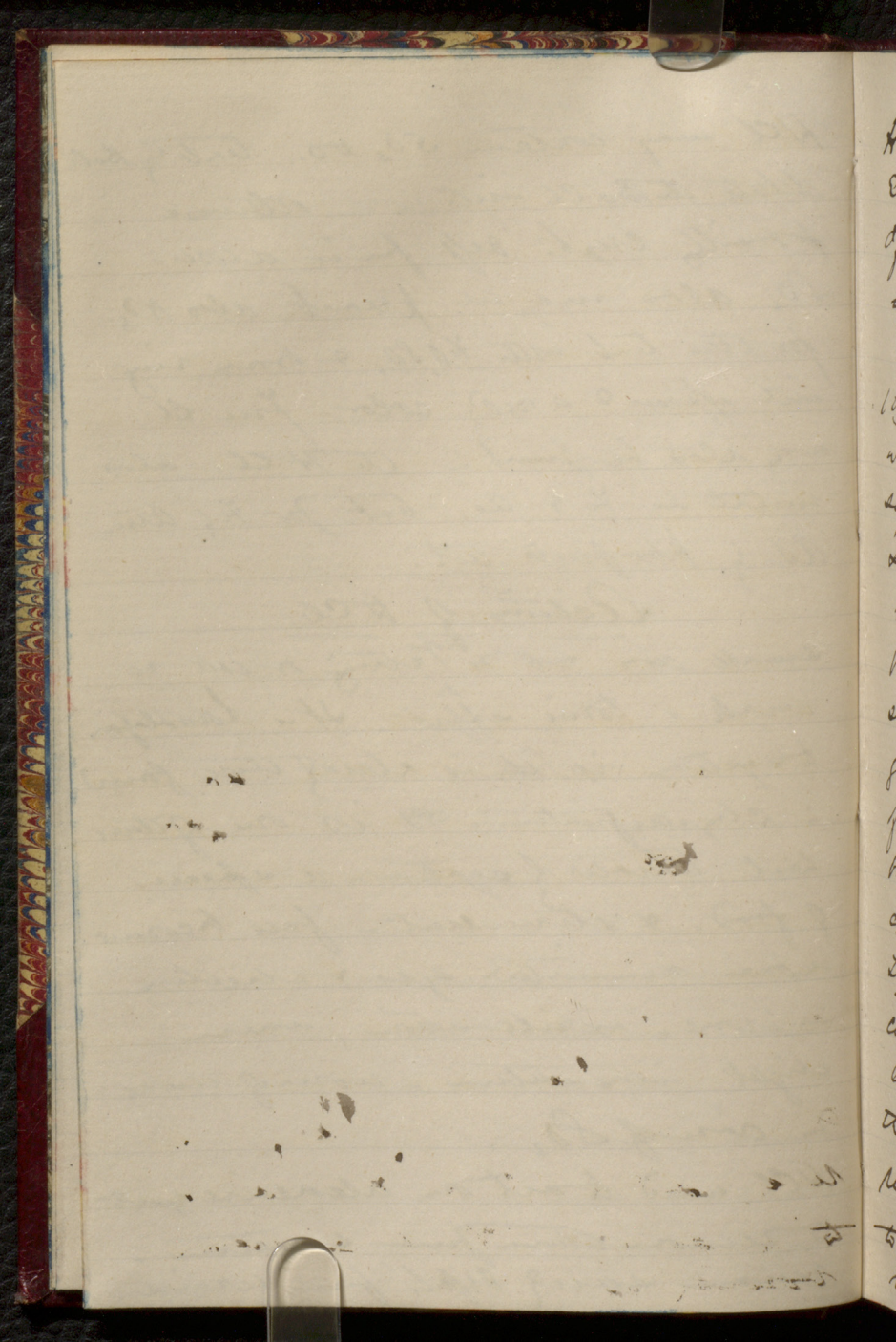


HCl may contain  $SO_2$  &  $H_2O$ . Test by Boile  
dilute the HCl with water otherwise  
freely expt. dep. for it alone.  
 $SO_2$  also may be present. also  $NO_2$ -  
for this test with  $K_2O, SO_2$  & brown ring  
will appear & a red color. free Cl.  
may also be present in the HCl. also  
reacts as Fe & As. but for Fe & As.  
As. } phosphate test.

### Actions of HCl.

small dose 20 <sup>grs</sup> or less is  
weak = tonic effect. It is homologous  
to system i.e. it is already there found  
= Chymiflavin. It is one of those  
best tolerated of system - a species  
of food. & stimulant - face becomes  
more animated, eyes & cheeks  
improve. exhilaration, even  
slight intoxication - none of these  
in case of  $SO_2$

HCl. used to act on alkaline salts  
& remove them from system.  
remove some of dep. for urine.





HCl. against worms.

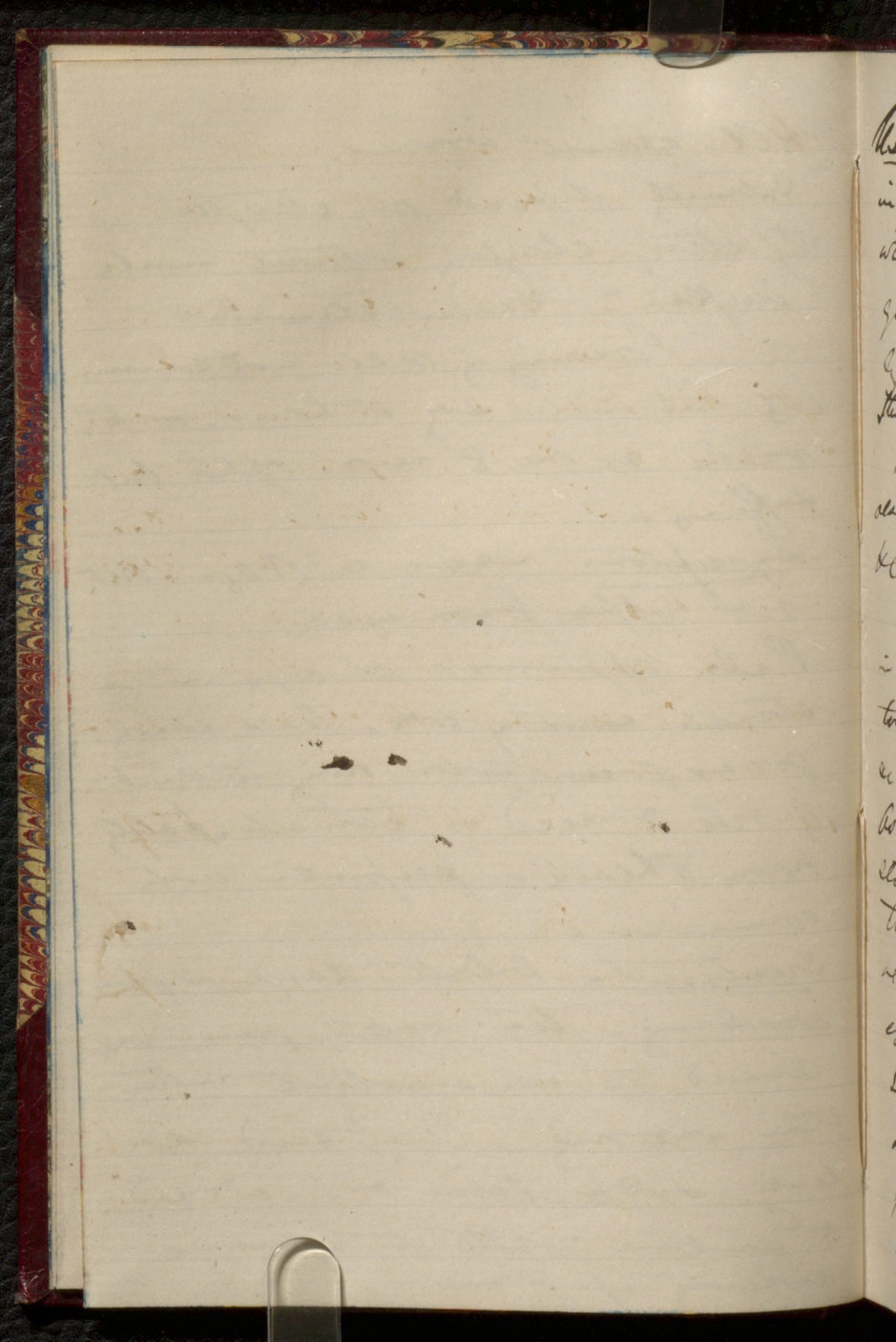
Externally depends on strength.  
Of strong sloping without much  
inflammation. Weaker - stimulated.

Poisoning by HCl. not common.  
103 will kill. say 15 hours - or to  
weeks & on 8 mos. after but  
suffering -

Symptoms same as H<sub>2</sub>O<sub>2</sub> - but  
not upper passages -

P. all. appears - changes in  
stomach - ~~caustic~~ taste. tears easily.  
green color owing to comb<sup>n</sup>  
of bile & acid in stomach. patchy  
brown & black - perforation not  
common -

Treatment. Dilute. Avoid if  
corroding. Tea, water, green ~~water~~  
linseed tea or emolvent better  
than water only - But acid as  
Mag. soda, lime or. advised  
to continue with it - Evacuate  
sooner if possible.





Uses. In Urinary complaints.  
in Phosphatic Diarrhoea - give  
with infusion of as fentin  
quassia. Action not local  
& on assimilation prevents.  
The HCl does not exaltate uncombined.

Useful also in cystic Diarrhoea  
also Oxalic acid Diarrhoea. In these  
HCl not so valuable as Nitro HCl.

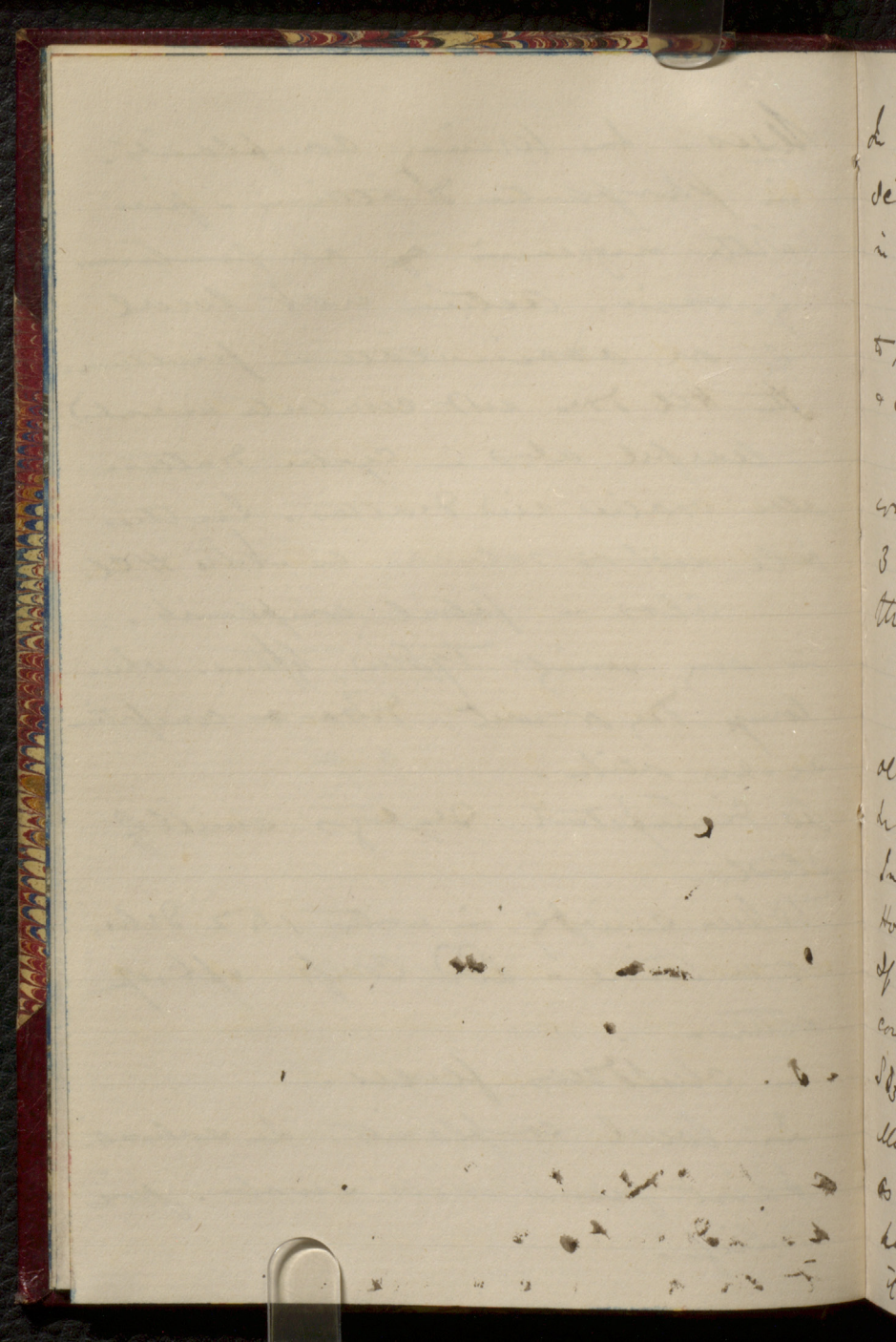
Also in febrile complaints.  
in very various typhoid, typhus. when  
tongue dry or wet, Diarrhoea & constipation  
ex. &c. alike.

As disinfectant destroys smell of  
stools.

When mixed in water 1 & 2 drs.  
is a tonic. Good Corp. of  
ether.

In childhood fevers.

In local complaints. In salivary  
gland pain & inflammation. gives  
relief.





In off<sup>s</sup> of trout - as reptilian &  
se. fur. as a cortine app<sup>r</sup> in  
in caries of bone - <sup>but</sup>  $\text{AgNO}_3$  better.

Acid of HCl.  $\frac{1}{2}$  drachm and  
to  $\frac{1}{2}$  pint water for fruckle.  
& chopped skin, Skullblains.

Always diluted with  
water = etc. a HCl. Dilution  
3 strong acid & 8 water - Cook  
thro' quill.

### Nitric Acid.

old theories & names -

In air. Thunder storms in

In water in nitrates

How prepared artificially.  $\text{KNO}_3$  &  $\text{H}_2\text{SO}_4$

If not proper made may decompose

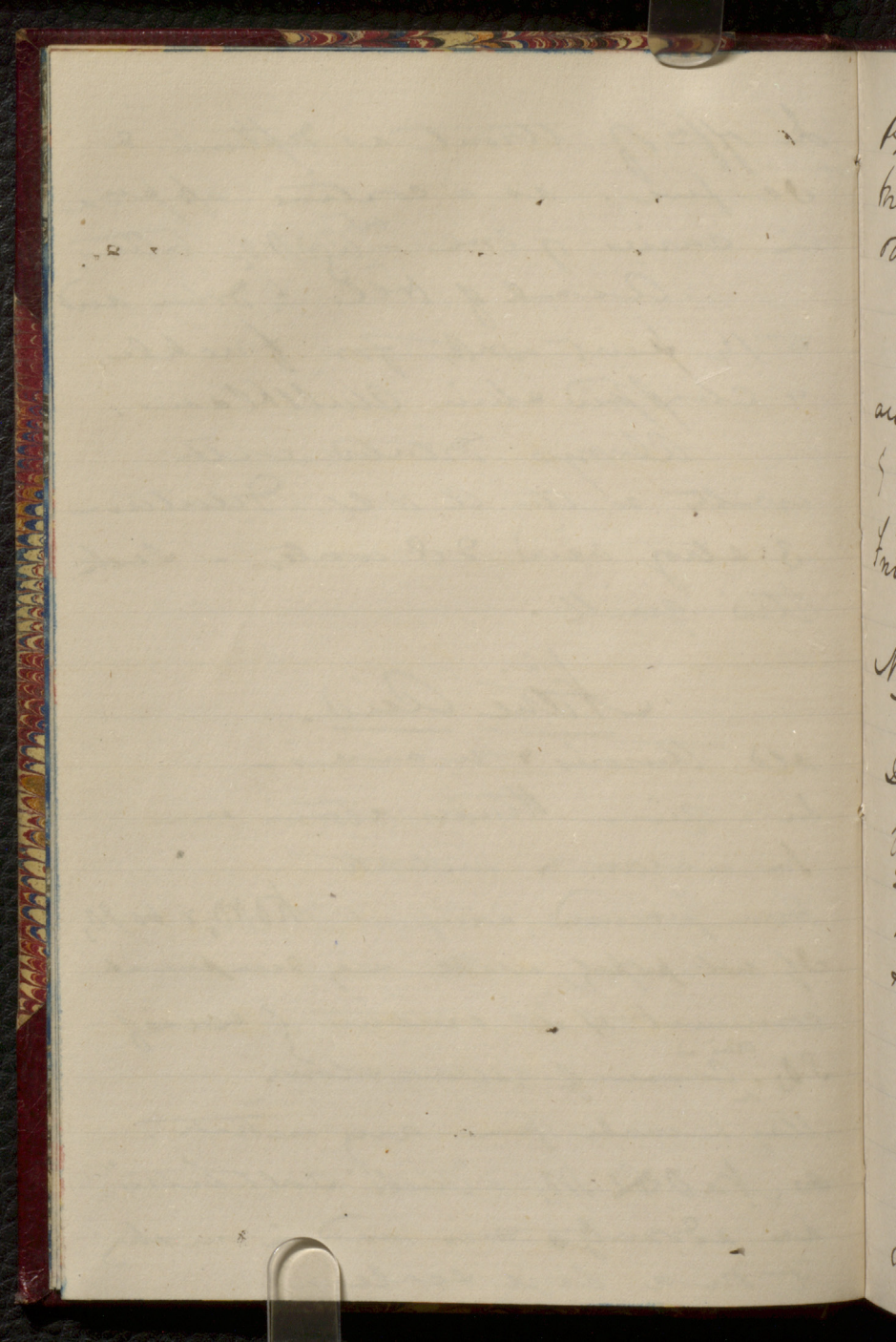
compound of its existence of excess of

$\text{SO}_3$ . <sup>this is</sup> Cause of yellow color.

May be made from any nitrate.

as  $\text{NaNO}_3$  &  $\text{M}_2$  = "Chili salt petre".

has advantage & is used in making  
it on a large scale.





Phar.  $N_3$  = esquis nit. sp. = 1.50  
Vols at same water, corrosive.  
Other properties, as action on metals etc.

Nov. 11<sup>th</sup> No lecture on  
out of "University Lecture"  
& Judge Dunkin.

Friday - Nov. 12<sup>th</sup> - 75.

Nitric acid - Pharmacop. nau.

Jewellers use it under name  
of aqua fortis = acid with water  
2 kinds N. duplex & simple.

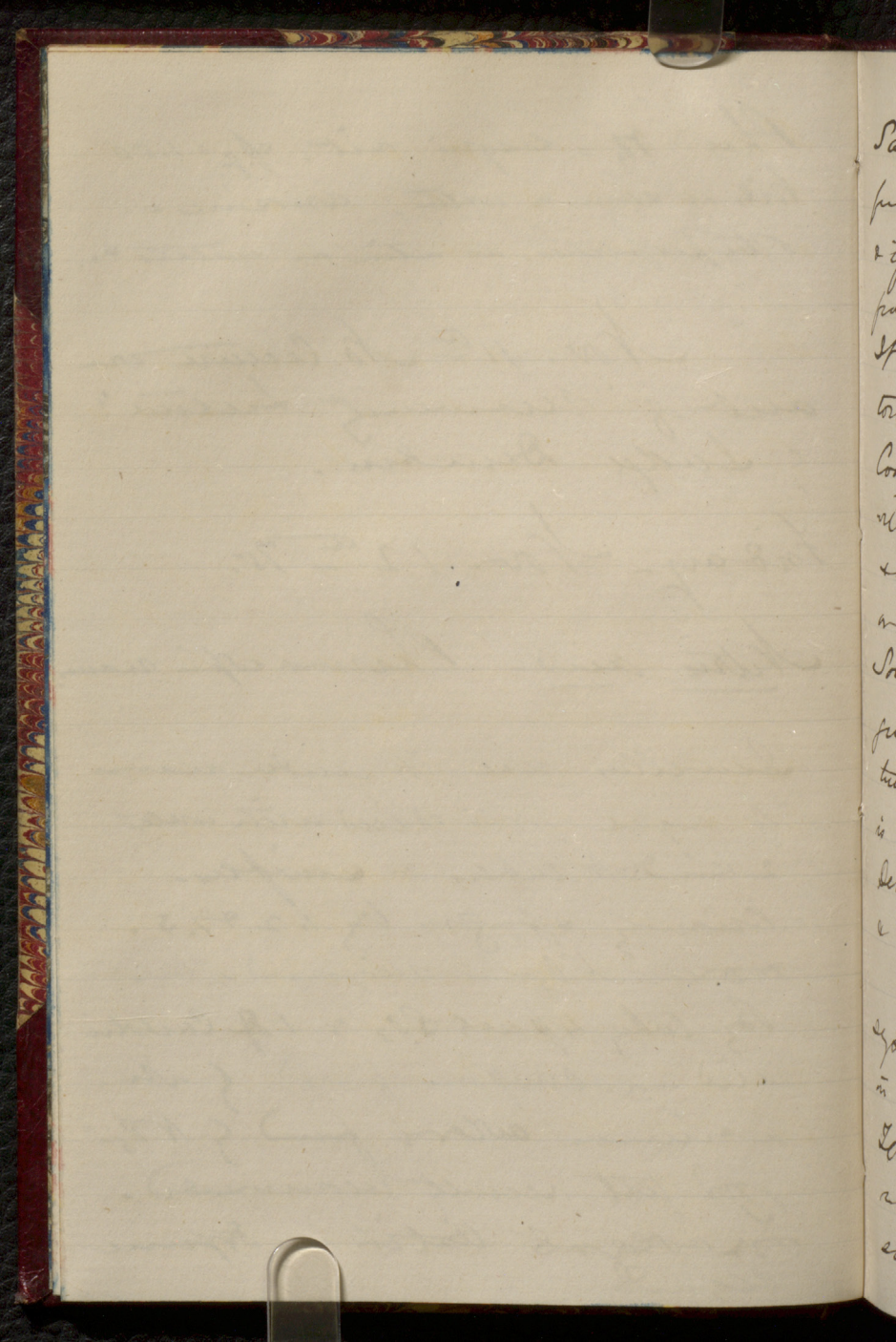
Known by sp. gr. by 1.2 & 1.3.

How  $N_3$  is recognized, tests:

By taking 4 parts  $SO_3$  & 1 of Carbolic  
acid - a comp<sup>d</sup> is formed of wh.

a crimson color is found &  $N_3$  =  
good test recently recommended.

For organic test in organic  
liquids





Saturated with potash & thus obtain  
from it  $\text{K}_2\text{O}$ ,  $\text{NO}_2$ . if thick strain it.  
& if  $\text{NaCl}$  which purifies to  
just  $\frac{1}{2}$  of  $\text{AgNO}_3$ .

It opens in small doses is a  
tonic but not so good as  $\text{HCl}$ .  
Cools preternatural heat & unites  
with  $\text{K}_2\text{O}$  in stomach <sup>but is not ad.</sup> in  
same way irregularly & hence  
or absence of  $\text{HCl}$  in stomach.  $\text{NO}_2$   
Some oppose in effect to  $\text{Hg}$ . in  
funes salutaris &c. still different  
but both become loose. also that it  
is useful in venereal cases.

Diminues primary secretions as saliva  
& digestion organs. Diarrhoea or Constipation.

Once thought might add  $\text{NO}_2$  to  
system but exploded. emulsi-  
on in system not therefore itself.  
Lithiatic used for such as  
used to prevent or remove  
stone in kidneys or bladder.

2 Exam - of King Nov. 11 calls

How to purify ox. iron as a substitute is  
a common poison. Give a tablet  $\frac{1}{2}$  grain  
every hour or so.

Proportion of ingredients to take in making  
 $\text{FeO}_2\text{O}_3$ ,  $\text{FeO}_3$

What is Ferri Sulphas Semicratus.

If crystals of large green -

dose of  $\text{FeO}_2\text{O}_3$  - prescribed in various aff<sup>ns</sup> -

Take equal parts of each or -  
external applic<sup>n</sup> in erysipelas.

The paper burnt 1 pint powder.

What is the dose of cit iron. When used: eye  
overdose produces dizziness.

16 f. c. ferruginis used in making  $\text{FeCl}_2$ .



When applied, acts according to strength.

If strong on skin forms  
acid. As a cathartic - or - Weak it  
is corrosive & irritant.

$\text{NO}_2$  - liable to be adulterated: a too  
much water than of  $\text{Sp. fr.}$

of Nitrous acid. & its peroxide forms  
the known power to dissolve gold.

$\text{SO}_2$  of  $\text{BaCl}_2$

then action used & exam<sup>n</sup>

Agua -

How to make  $\text{Fe}_2\text{O}_3$ .

" " test for iron

Dose of do -

Strength of a solution

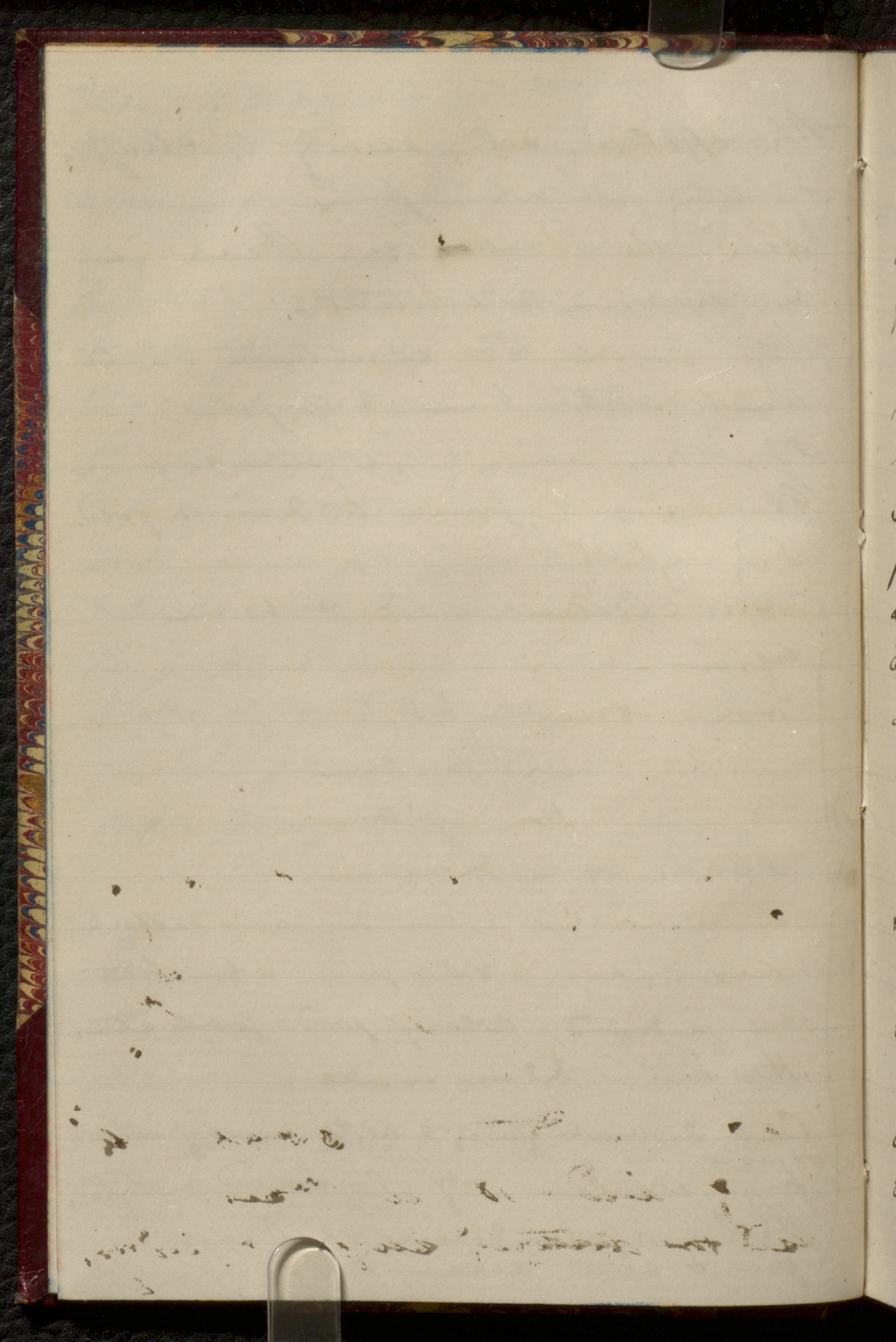
Its advantages in medicine as a salt of Fe.

(Uses. Combines Fe & I & gives when both  
are indicated, color of food - pale tongue

How pills of Fe are made.

Carbonic acid made by  $\text{K}_2\text{CO}_3$  &  $\text{HCl}$  - excess of alkali  
as to  
from solution - of clay colored water.

What kind of skin disease used for  
How to detect arsenic in it.





Monday Nov. 15<sup>th</sup> - 1875.

Prescrip by Mr. 28. have  
poisoned - may see for med.

Various p.m. affms. Mouth & throat  
throat etc. low flatish suffusion tongue  
hard coat. feces enlarged. Plethora  
vascular. upper part of capillary  
preternatural red color. In traction  
app. like after Coup. Lungs  
congested. bronchi inflamed & covered  
with secretion. Struck per & the  
wrinkled, renal. walls broken  
down & disorganized - perforated.

The liver kidneys are empyated.

Treatment of popper draught of  
water - (2) retained. May. Soda  
lime or carb. salts no  
benefit. If vomiting persist may  
Acid in dilute 15 parts water  
to 1 of acid - 10 m. doses -  
Used for destroying surface & feeding

issues. fold lint 2 or 3 times  
on plate & add acid. squeeze with  
glass rod <sup>of suitable size</sup> - <sup>of suitable size</sup> of part  
& the dressing. held  $\int$  strips  
for 12 hours. remove & put  
in hot position.

Useful for ulcers, discom. as in  
caries. not to suppurate over  
8 or 10 days -

for piles hemeroid protrusion  
like cauliflower " - force  
down  $\int$  put it so as to get it  
it  $\int$  flat piece of wood dipped  
in acid - painful - but pt. had  
no further - fine specimen.  
successful - 2 app<sup>s</sup> may be required.  
... as sub<sup>st</sup>: for  $\text{AgNO}_3$ , potato  
had ex. of mercury.

$\frac{1}{2}$  dr. this  $\frac{1}{2}$  pt. of water for  
ulcers

Internally for dyspepsia. even  
when <sup>indig.</sup> of stomach.



Also in *Phosp. Natu* of *urine* -  
In febrile *diarr.* doubtful -  
for *Diarrhoea*. from *atropin* plain *cases*.  
No. 9 *Camphor* as *Holus* *urine*.  
1/2 dr of *acid* & 1/2 gr of *Opium* -  
60 *grains*.

*Suppl.* & resemble *Ag.* & is used in -  
& 33 *of* *phlegm*.  
spread about in *breast* good as a  
*disinfectant*. shd. not be treated.

*Nitro. hydrochloric acid*.

*Pharm.* *nam* =

3 *NO<sub>2</sub>*, 4 *fl.*, 20 *dist. water*,  
*mixed* - & stand for some time.

*Chem.* *explains*. *Probably* <sup>some</sup> *Complex*  
than *suppl.*

*Ches*, = fruit *stem* per *color*.

*clear*. *Orange* *fruits*. *of* *fr.* 19074

*common* to *of* *substance* &

*granular* *acid* = 6 dr. *weight* 93.8 of *soda*  
*bleach* *used* - *dry* *fold* *leaf*.





Columbo 1℞. and 1℞ of Colato.  
same mix<sup>n</sup> for phosphate  
urine.

In impetig it chd by acid & 58 &  
the fith silver tabe. & of gold.

If cold skin or. fine bad  
lim. low spirits or. this acid  
is good -

also for gangren as after pneumonia  
& in old persons of gangren, also  
in prison blood.

for a counter irritant use  
℞. 2 Dr. of sp. temp. & 1℞ of lead -  
Oxent - Chlor. cuticula - spiritus  
fring. ofine.

both these aids or be pin with  
care. Saye ditid with water.

use syring - seek thro' quill  
not to be pin with alkalis or  
acids or ant. of lead or Hg.

with sulphur. or sulphides.  
or not to be pin salt.

not in silver species. Should not  
be mixed with just before using  
as not found out right  
thing.

### Sulphuric Acid.

Natural - but usually in combination  
with alkalis. 27 nat. sulphates  
found in nature.

Pyrites =  $SO_2$  - from Nordhamm  
acid. like asbestos, melts at 66.

Saxony or Nordhamm acid.

from fallen nitric { distillation. In  
stone jars. distillation into next =

Ordinary coral,  $SO_2 = H_2SO_4$  = hydrogen  
sulphate. How made - 3 for  $SO_2$ ?

$NO_2$  vapor scale is found by  
heating nitric with sulphuric acid.

& steam in leaden chamber.

weak = 1.5 sp. gr. run off & concentrated.

= 1.7 & then distilled in platinum =

1.8 sp. gr.

Nov. 17<sup>th</sup> = Lecture not attended



Thursday Nov 18<sup>th</sup> 45

SO<sub>3</sub> - In purplish fumes.  
In children acts like iron  
on blood & more in capillary  
Arteries & veins after consumption.

Put up in water can &  
apply locally for rheumatism,  
sprains, contusions &  
Should neutralize 200 vol. Soda  
57 gr. of acid.

- 1 Phosphorus
- 2 Phosphoric acid.

1 How found in nature. <sup>droplets.</sup>  
 2 How prepared. <sup>brass</sup> <sub>200</sub>  
 3. of SO<sub>3</sub> - see -  
 By slow cooling through part of aqueous  
 solution at 710° boils, gives &  
 the properties. hard kind. Sol. in  
 Alcohol with S. Iron of C. &  
 of metal as a B. in small pieces  
 In small doses acts to tissue.  
 With care no effect to surface.

Exalts plant also recovers ~~from~~  
usual febrile. Modifies time  
P. in oedema. Power 12 to 16 grs.  
than total life. Pain in lower  
part of abdomen. usually chills.  
Heart firm. Stools bloody &  
Vascula dilated. Fever  
not <sup>the</sup> mind. Dreams of lower  
part in water. <sup>or</sup> <sup>of</sup> <sup>the</sup> <sup>system</sup>  
of peritonitis than bone itself  
or necrosis. Pain & swelling  
Evident exultation & rhythm in  
eating.

Treatment of meningitis of P. oil  
frequency. Magnesia in powder  
or liquid. 20 grs. of powder  
in 20 to 30 mts. of liquid 182  
Tuberous peritonitis. Useful in  
Suffering of brain. In Paralysis  
as for atrophy. on side.  
2 paralisis of lower extremities not  
so common. In scabies.



New pin in solid state. liquid, as  
 ethereal & oleagineous. Ant heat.  
 12 grs P & 103 of skin oil. Stand &  
 shake oil water also 4 grs of this  
 Dose = 5-570 drops 2 or 3 times  
 a day.

Phosphorus acid. Acute Phos.  
 Diet with  $N_2$  - usual comp?  
 of pous & pie acid = liquid. f.  
 Sp. gr. = 1.074. By evap<sup>n</sup> solid  
 product like ice = special P & C.  
 Comb<sup>n</sup> with water - common =  
 brown pyro = 2 or 3 times  
 one. From the common the  
 other 2 are formed. <sup>common</sup> known by  
 sp. gr. of Sulphuric & Ap<sup>o</sup>  $N_2$   
 & Cl. this considered sp.  
 The other 2 are known from common  
 & differ with Ap<sup>o</sup>, &c. & known  
 Phosphorus acid known of Acute  
 Sp.  $N_2$ . with cor. solid. sp. of cul<sup>e</sup>  
 & c. 205-83 very important in practice

Pur air acts on system like  
P. Agrees with patients being  
homologous with the system.  
but ~~to~~ ~~be~~ ~~may~~ ~~be~~  
diverted. Reddy about 8  
cure heat to heat, stop &  
heat. ~~Exhalation~~ ~~also~~  
excites sexual - Stimulant  
to nervous system -

For fevers in Europe - long  
cont. fever. give with large  
in dry season. buds open  
out.

For circulatory system - as heat.  
Dose from 5 grs to 20 to 30 min.  
by constant.

Stimulants.

Term not exact. e.g. = gl.  
capable of exciting function  
of some organ, still vague.  
= sublimated urine. Sells  
e.g. = pen! remedy not copied



to a single point not many  
simultaneous - esp. on circ. &  
nerv. system. May divert  
energy from 1 to another point.

D. Barrett says, more microphytic  
than by old wood of paper applied.

By some of style & food  
air, heat &c. stimulates never  
only temporary energy at exposure  
When one colloids or diff<sup>n</sup>  
ability &c. in part<sup>n</sup> to extend =  
Recoil not due to the medicine.

Slow rapid pulse. Dryness of humid  
surface. Great hot skin, cheeks  
yes anoints, mucous membrane  
cold red lips.

An nervous system. Blood thin  
like cry<sup>n</sup>. Mental faculties being  
as with &c. In certain disease  
subsidence of symptoms

An Dyer's system like toxic  
acutely Dyer's acid of eye  
rapid & large amount of secretion from

Respn rapid & shallow.

Secretions increased but not in kidneys nor excret. urine mixed in excret elements.

Stimulants may act in Opp. ways. Opp. to above in weakness - reductn of heat & ceasing of circulation.

1. Beneficial in mental exhaust reactions, convuls tachycardia. Opp. or support w/ weak matters women but then depend on supply of blood, allay excit.

2. Are disinib w/ great pain as neuralgia - Opp. or support effct if ant. symptoms ant.

3. In anemia wounds in muscles. either relax or rigidity. again support or Opp. effct. Opp. in person who has lost blood. Stimulants support



4<sup>th</sup> - In tumultuous state of  
excitation - pleurid cond<sup>n</sup> -  
Again opp<sup>n</sup> or opp<sup>n</sup> - safely  
good if heat weak - Will  
widen if too slow & decrease  
if too rapid.

5<sup>th</sup> - In repairing form of outpulle  
for foreign dist<sup>n</sup> or  
dys<sup>n</sup> of part. safely in effere  
of plastic char. The stamer  
increases

6<sup>th</sup> - As food - a prop<sup>n</sup> with  
fully accented & - Estimated  
used - 300,000,000 pounds  
more Indian hemp pup<sup>n</sup> -  
400,000,000 coffee -  
500,000,000 tea. "Cher  
but don't neglect" - Humane  
All use tobacco - Act as food  
less food required. May way of  
rearing - Nately is carried  
in under lower dist<sup>n</sup> - & terms

not water & distillation of  
of effluvia. at Stimulants

Air

from fresh and or "Infectious  
lepra"

Sources of Air. Animal exhal.  
& coal products. bones  
drug, urine, pus, etc.  
In Gas liquor under cond.  
Cl. Salph. or S. Sulphur  
& SO<sub>2</sub> - decup<sup>d</sup> & Na Cl. &  
distill with lime. = water  
Croup<sup>d</sup> Air. Volcanic Air.  
from brain air works =  
Usual air from Sal Air.  
with cum. 15 2. rub  
in mouth & smell it.  
In Phos. as liquor & gas.  
coll. pos. over Hg. on inverted bottle  
of bubbles upon decup<sup>d</sup>.  
= CaO + HCl = Air & Cl<sub>2</sub>  
light fogs of at the bladders.



Acts as fine air but transient. Chem.  
& tests for the gas.

Physiological effects. Stimulating expectorant.

From long action of long  
exam<sup>n</sup>

Friday Nov. 19<sup>th</sup> - 75.

M<sup>o</sup>. Urepe in crop - asthma - cold.  
is a stimulant; also in forcing  
by bromine & prussic acid.

Liquor atm. is mixed gas in the  
bottle with double head - water in them  
to receive the gas. Phosphoric acid - water.

& strong = Liquor air fortior by p.c. of  
gas the weak = 0.959 emb. w.p.c.

<sup>the fortior</sup>  
w.p. 0.891 = 32.5 p.c. gas. Clear  
colours like water & gas rapidly  
in air if uncapped & after increase -

Leat with  $\text{CaSO}_3$  ppt. Is a  
means of diagn. the pres & pres abs  
of Hg. W. ppt. { per. & wh with  
proto. other tests.

Gas known of holding red dyp<sup>nd</sup>  
in HCl. fumes = Sal am. By its  
alk. ppt. wh. on ephemerical - then  
with lime - known of ox. acid. The  
impurities of air. for gas lighter  
but not found - that made of  
Phos. process.

Actions app<sup>d</sup> to surface, does not  
affect tissues so far as H<sub>2</sub>O  
or H<sub>2</sub>O. Penetrating gradually works  
down & radiates up. I think  
prob<sup>ly</sup> it are therefore extensive  
as Blisters. Place on lint & cover  
with water glass or. If skin exsists  
forms blisters full of serum -  
In less than 20 minutes unless  
not sensitive. greater than  
carbolic acid. If not covered



of redness recalls. The Am. also  
dialys tissue pain & burning.  
Neutralizes any acid in skin as insects  
as moths to neutralize the formic  
acid. Small the vapor as standard  
in fainting vapors, hysteria &  
catarrh of nose.

Internally neutralizes acid of the large  
intestine into blood pre-heat felt.  
Diffused & vaporized in stomach.  
also liable to be neutralized beyond stomach.

Exerted & upon action of  
nerves. Transmitted through  
it to increase the action.

Suffused to form a sedative salt in  
system, but probably not so.

Examination begins.

Name and described. Prep<sup>n</sup> of HCl. & rising  
& HCl. prep<sup>n</sup> of H<sub>2</sub>O. Posing of H<sub>2</sub>O. water  
poul. mucilage, Specimen. By SO<sub>2</sub> same treated  
except lime wh. forms specimen. Oxide of zinc  
for SO<sub>2</sub> posing. The recally 3H<sub>2</sub>O<sub>2</sub> acts  
as an irritant & throws it up.

Poisoning of  $SO_2$  rapid & fatal about  
air passages.  $NO_2$  often from  $NaNO_2$   
as well as  $NO$ , advantage over  $CO$  but  
may contain  $O_2$  which the patient does not.

Impurities of  $NO_2$  =  $Cl$  -  $H$  - Poisoning of  
 $HCl$  gives exultant, cheerful effect.  
 $HCl$  prescribed in diseases = etc. said arise  
fewer both in & in convalescence.

How is  $SO_2$  made - Theory of its process.  
Uses of  $NO_2$  in med. Is disinfected a  
space of 10 "cubic ft." feet - how?

Symptoms of poisoning of  $SO_2$ . Taking  $SO_2$  as  
med. causes the secretion. How  
Nitric anhydride is obtained.



Monday, Nov. 22<sup>d</sup> 1895.

Cause of forming of skin - one  
under Dr. H's dose of beating of  
a curley of skin portions. In:  
of eruption and scars.  
another of pulley taking it  
inward. Did of wrinkles in  
anyway -

Uses taken, air - 1 of caustic  
& 2 of thin oil - rub on  
scalp. Rub first with water  
~~the~~ with thin brush  
for Mosquito bites - add water.  
As inj<sup>n</sup> to restone discharge in  
1 Dr. to 1 pint of milk.

2 Dr. to  $\frac{1}{2}$  p<sup>t</sup>

Lig - air also for soft tissue  
in action. roll of <sup>or spray</sup> lint  
on stick.  
in part of air 7 3 of water  
or - 13 of 100. Depress tongue  
in strong light. care not too  
rough - a press out & down legs.

With oil apply to chest in  
colds &c. & for spasms &  
bruises & old wounds.  
on heart burn with sage,  
or alone. In dyspepsia &  
flatulency or when latter when  
for derangement of upper part  
of intestine.

Dose internally 10-15 drops  
layed with water - Externally  
Agyptil & oil. cam & olive  
oil. Take of you drop  
and make a solution of  
heat. Not so proper in chest  
as vapors for it is a violent  
irritant.

Comp. - Anacardium ʒij. or  
clear fluid, Diss in Skim.  
L. Oil. & camphor & rosemary  
good for lubricity - useful for  
bleeding &c. is a counterirritant  
in febrile prostrations &c.



oil of Laur. met. spirit & L. Am  
Dose = 10 dr. 5 1/2 dr. Stimulat  
& anti spasmodic. for nervous  
crisis.

Spiritus Am. - frō Am as  
usual. into alcohol -

Spiritus Am. - frō. has in  
addn anophidion - slice  
cutts - warm & open place  
in perfume & add more  
of the ingredients.

Dose 15 to 20 m. of both above.

Acetate of Am & Am <sup>and acetate</sup>

In solutiō { Direct union of  
Am & acetic acid. Take Dil.

a.a. & add am till neutral  
& test papers.

Best prep<sup>n</sup> = 5 1/4 parts L. Am.

to a.a. & 50 dil. water =

clear liquid sp. gr. = 1.06 as above.

Caution: with addition of equalts.  
shd have slight bitter & unpleasant  
flavour - not acid. rather excess of am.

but keeps better with excess of acid.  
If add HCl. prevents of acid. Long  
standing, & flocculent precipitate.

L. Am. acetate and remain clear,  
under H<sub>2</sub>S. Boil - is free from  
melting impurities or -

Is a stimulant. Dose 1 or 2  
Drs. (Cape dose) feels warm  
& dry mouth. quickens pulse.  
It sweats profusely if kept  
warm & hot drinks. If the

Dose - a diuretic. Some physicians  
have little confidence in it.

May be used for catarrh  
of the cuticula about 2 Drs.  
with 15 or 20 drops of ammonia  
& bathe feet hot water.

For influenza, &c.

For febrile reaction - Dose 1 or 2.

For local use as for eyes

scrubbed - 1/2 oz in 6 oz water

If red case add acetate of Zn.



as cooling wash - Scalp effro, Dose  
 Internally ~~is~~ = sweet adulterans  
 Benzoin of Am. - purp and  
 1/2 adding with byeta (eggs) of  
 Am + 1/2 of benzoin acid. =  
 3 of Am + 1/2 of benzoin  
 acid + 1/2 of sugar in flower.  
 flask & heat. Reduce to solid  
 1/2 evaporation = crystalline substance  
 1 part sol. in 60 Hot water or  
 1 1/2 of boiling water.

Either 1) neutral or acid. 2) yrom are  
 sharp pungent taste no smell  
 not susp in air. free Am  
 if heated. Dissolve the benzoin  
 acid & 1/2 of sol of pot salt in  
 brown ppt. <sup>Benzoin of Am</sup> not sol. in alcohol.

Stimulant - exptl aperiant.  
 combines qualities of Am & Benzoin  
 acid. for Rheumatism 1 part  
 Dose = 5 to 15 or more. in soln  
 chloride, urea, cathartics.

Bromide of Am. - add syph.

1 part iron filings

3 Br  $\frac{1}{3}$  - wts, add & heat

- Fe Br then  
As soon as sol<sup>n</sup> Am is

added & ppt. the salt, sep. liquid  
& evap. is amorphous in white  
fragments. Drying tank & odor.

Deliquescent. Dries readily  
in water. Test  $\frac{1}{2}$  Cl &  
blue color like I. but yellow  
or orange.

Find alk. dissolves the Am.

Dose 5 to 20 gr. 3 or 4 times a day  
for nervous excites or epilepsy  
for actual cases or functional  
syph. Belts to add iodine or  
bites as granules or colombs  
for St. Vitus dance. Of  
much Anemia add Fe 4 1/2

People in spleen disease &  
Chloro suffer of pericostium.  
Doubtful of belts the K.S.



2 chemi unal dis. a. Bryle.  
Whorling ceph of Dr Gibb. K.B.

Belts.

Carbonate of Am - Any known  
Kinds, Arsenians &c. not abt. in  
nature. Justicia purpurea (a plant)  
from it.

By decomp<sup>n</sup> of alk. urine &c.

12 or more cub. buon oil ref  
3 or 4 for med. sol'd & sub. vol.  
alk. am dor. in prop to am. & if  
not cub. and ass.

No residue if pure - By comp<sup>n</sup> -  
Kian & testig with BaCl.

Acum carb. of phos. take sol. am  
& K & dissolve & add in a retort  
distill. & concentrate. ppt. any sol<sup>n</sup> of  
BaCl & if free am added as 2<sup>d</sup>  
duple - Not used in ~~the~~ medin.

Am at Seign col - 5 or Ternumini  
C<sup>th</sup> of new nomenclature.

Sub. Sol. Am & chalk & rub. by the  
& put into a cumber & sublim<sup>n</sup> heat.

In factories of iron mines. Several  
connected together.

It is usually found in wet or even  
places. Open & at present  
an odor etc.

Leads for mass carb. of sol:  
p. 2 p. 1. Ba Cl. & 20 to 25  
on solution of ~~Fe~~

When spread out to air becomes  
faded & separates. Part of air  
flies off. If well found  
upon it a ~~stone~~ deep  
mass & is carb. found one  
big rock, etc. etc. etc.  
& held on a much ~~size~~  
of 2. but is. ~~the~~ leaves  
crystalline etc. iron  
comp. with ~~with~~ ~~to~~ ~~is~~  
off  $CO_2$  ~~of~~ ~~the~~ ~~falls~~ &  
forms one ~~of~~ to air.  
Test with  $AgNO_3$  for impurity out.



Tuesday, Nov. 28<sup>th</sup> 1875  
23<sup>rd</sup>

Seag. carb. am. popular an antacid.  
as in indigestion. Pickers of pugg  
= morning sickness the is food  
5 to 10 grs carb. with 5 to 10 m. Candru  
In red sand urine & little acid  
disturbance act by effort on stomach  
as it is not secreted to kidney.  
In diabetes. on act. of <sup>to</sup> much  
water & sugar not on act. of kidney  
but stomach. Carb am. exalts  
tonic strength & imp. Digestion  
It should not take for many food  
but ~~could~~ fat & meat & gluten.  
Carb. am. also food. Also food for  
glands - rare disease in man  
Make mixture in the  
dust & with <sup>sub</sup> carb. of Carb. am.  
In eruptive fevers. <sup>as</sup> useful for  
Epidemia. very successful used  
alone. In scaly eruptions of skin  
dust <sup>as</sup> ~~as~~ <sup>as</sup> ~~as~~

Useful in bronchitis. if little  
fever be present. In nervous diseases  
in fits & Corea. & headache.  
As an emetic if large doses of  
Opium or Allodona. Same  
ind. emetic fail. 1 spongel  
of the Cor. with mustard or  
spices. As local remedy  
for skin diseases. Dose  
1 dr. <sup>3 to salt</sup> salt in 103 water -  
As a stimulant 5 to 20 per  
or emetic 3 to 20.

Peps = sol. of <sup>403</sup> salt in 603  
water. Dose = 20 in 1/2 dr.  
Liniment dose at am.  
Equal part of this & linseed oil  
make a soap.

Spiritus Am<sup>o</sup> aromatica.  
= Cat. Lij am. a pint or  
oil of nutmeg & of lemon.  
Quibz tint pleasant dose 1/2  
& 2 drs. Mully with water.



Structure of Bicarb. of Am.

Obtained in 2 ways, 1<sup>st</sup>. Take  
Syring carb pulv. spread on  
large surface. to air 24  
hours the best remains blank  
or by pouring water & etc  
undissolved part is bicarb.  
or simil. dry. etc.  
with H<sub>2</sub>O & sat with carb  
and drops. = wh. powder  
suba am. smell. When sat. air  
the with 2 pieces of carb.

If exp<sup>d</sup> expent air than  
of H<sub>2</sub>O, C<sub>2</sub> - No ppt. with Ball.  
Diss<sup>o</sup> of 3 carb.

Mon o carb ppt<sup>y</sup>. to a but row  
Syring carb .. etc. Am. exp<sup>d</sup>  
Bicarb. see ppt<sup>y</sup> etc. alone  
but if with a bit. reph<sup>d</sup>  
Dose = 5 to 20 gm not in food

Sol. of Carbonate of Lime =  
Fluor. sp<sup>u</sup> } simply uniting  
to neutrality. with L. Lime or  
Ccarb<sup>t</sup>. = tryp. colles. plant.  
taste of flour. dissolves or rises  
what the fuel of lime acid.

Dose = ʒss fluid Oils.  
In fever & indigestion for heat  
burn & weak prob.

Hydrocharate of Lime or  
Lime Cl. = important. nature  
in Africa. Herodotus thinks  
same due to sand entering it.  
See Camels Dung.

Made for poaliquor. In it the  
Lime is comp<sup>d</sup> with acid, as to  
make it uniform Imp<sup>s</sup> SO<sub>2</sub>  
& Corp<sup>s</sup>. so that Sulphur  
add<sup>d</sup> Cl. of Lime Cl. p<sup>d</sup>. Large quantities  
sprung upon regions opposite  
of Iron Lime with sand Lime  
& several in it in the 3<sup>d</sup> Genus.



Introduce the charge & heat. Volatiles  
& Am. Cl., &  $\text{CaSO}_4$  remains. If common  
salt. Soda and impur. After 300 lbs. and  
in an charge. Takes 7 days.

Put with in charge hemispherical shape.  
Covered surface with oak or waxy, & kept  
hot. Bars of yellow color &  
There are few volatiles in  
of sudden heat. By exp<sup>n</sup> to  
air surface at pondage of salt  
be made. Water & forms  
crys. of octahedra & in feathery  
crystals. Sol. in water, & 3 of 10  
at 20 & 157 at 100° pt.

Reclaim corling tank outcrop  
for some time - first cold in drying.  
Set of rubbing with lime & small  
with  $\text{AgNO}_3$  - in oven. The iron not  
easily tested because a double  
salt broke up of  $\text{NO}_2$  & had purple  
air & got blue color, w<sup>d</sup> not if  
did not first run to  $\text{AgNO}_3$  - for  
lead & a yellow ppt.

Acting. Stimulant. not exposed.  
promotes absorption of mucus.

Small as Hg does in small  
dose cuts short inflammation &  
cures abscess. Controls swellings  
as palsy, hysterical. In  
eye dose 10 to 20 per an  
news & gives pain. If  
by eye palsy & exposed irritat  
ion. (Some is sal am<sup>ia</sup>)

Useful for trauma - removes dis-  
coloration if used as lotion. For  
opraia. For erysipels also.  
faint <sup>fruit</sup> cones with silk.

For eye. of pure cornea. at  
from spot. For rheumatism. As  
plaster soap & <sup>sal</sup> am or lead plaster.  
When cool spread on leather &  
use as strips. Also used  
wound. good for old people &  
chronic case - For elongated nose  
& apply powdered Sal am. strips.



In neuralgia not accompanied  
by tooth ache - If no relief, give  
it up & use R.D. in case of  
neuralgia. Clear mixture of honey, lin  
seed oil. Scurvy mixtures, sometimes,  
in chronic dropsy. For fur 5820  
grs. 468 hours.

Phosphate Am.

From L. Am & phosph. acid add  
& rub <sup>20</sup> in <sup>20</sup> glass.  
Operate from sup. & pass with  
soft tribula longer & mottled lignin  
add 20 grs L. Am & 2<sup>d</sup> cup. heat  
& then allow to cool & put in  
cemented state. Spout to 102  
of water. core looks yellowish  
with Nit. Sil. Don't sculp in  
water each of Am Sulph. of Arg.  
An & sub wgt 11.44 grs.

Dioleum uratis & lithate freely &  
hence employed in print & chemical  
expt. Chronic. & for prevent  
renew.

L. chive bulbs & catkins.  
Tree 5 to 75 gr.

### Alcohol.

Not for such substances but for  
anything which may be forming  
sugar. of that more quality  
for sugar.

Sugar must have ferment &  
be in temp. for 20 to 30 deg. water  
also kept in proper sugar.

Sugar split & form two new products  
= CO<sub>2</sub> & Alcoh. If can sugar  
1<sup>st</sup> to paper. Then in proving it  
must be other things produced  
as other extrinsic substances, part.

Stages - fermentation - malt =  
ali. paper = wine. If distilled  
stage = ardent spirit. By acid =  
rum. Am = whisky - none  
pure. { any C. Ch. rectified  
spirit. If drawn as & then in  
absolute alcohol. { dehydrate.



Specific gravity of alcohol  $\rho = 0.784$ . Rectified  
spirit 0.88. A 3<sup>d</sup> over = proof spirit.  
5 for volume of water. 0.520.  $\frac{1}{11}$ .

Wednesday Nov. 26<sup>th</sup> 75

Properties of alcohol - flame - affinis for  $\text{H}_2\text{O}$ .

mixed with  $\text{Cl}_2$  <sup>mixt.</sup> & is reduced  $\frac{1}{33}$  of bulk.

Solvent of var. of things. Some salts &c.

Alcoholate - as of  $\text{am.}$   <sup>$\text{CS}_2$  in</sup> A menstruum  
for extracting active principles of drugs.

Coagulate albumen & casein - for  
anatomical preparations & for brains &c.  
not for cancer purposes

To test strength use Lyke's Hydrometer.  
Let it form & if strong remain 2 min  
near. Lead if above proof. gun powder  
will still explode if not - undr. also  
will with the alcohol.

Take 403 & distill 203 & try strength  
of this.

Adulterations = oil of grain. Let  $\text{H}_2\text{SO}_4$   
or  $\text{AgNO}_3$ . If becomes turbid & full  
reddish brown = oil. Write Ag. 103 - Same

Operations of al. Effect on circulatory  
stimulents - pulse more frequent &  
voluminous. The splanchnograph does  
not show any increased arterial  
pressure - after very large doses weak  
pulse. Paces of heart irregular -  
Dilatation produced.

Moderate doses: induces a large increase  
in arterial action.

Heat of body. Experiments on animals  
heat decreased  $5^{\circ}\text{C}$ . by large doses.

Smaller doses less -  $3^{\circ}\text{C}$ . or in prop<sup>n</sup> -  
 $1^{\circ}\text{C}$  to  $\frac{1}{2}^{\circ}\text{C}$ .

Power over putrefaction heat as of <sup>puer</sup> ~~puer~~  
<sup>example</sup> anti-septic or cooling to  $8\frac{1}{2}^{\circ}\text{C}$ . if  
in large doses - reverse in small.

Effect in prop<sup>n</sup> to amount taken & its  
duration also. Regulates & conditions of  
the individual. Cause of pt. Also  
effect & so of those accustomed to it.  
Depression of temp<sup>r</sup> may be kept  
up by continuing the alcohol -



Not due to action of nerves. proved by  
cutting spinal cord - same results.

It assesses the oxidation.

Effect on the Secretion. Less  $CO_2$  evolved;  
Diff. of opinion - many accepted conclusion.

Old view that lungs decompose<sup>2</sup> in  
if so will be enormous increase.

Removes nitrogenous substances, acts  
on the kidney. Expts. of several animals & done  
after a day or two. Hammond

1<sup>st</sup> with little food

2<sup>d</sup> with ordinary quantity

3<sup>d</sup> .. excess of food

reduction in all cases of solid in urine.

Against this the streams show but  
slight alteration in effect on nitrogenous food.

Maybe because this pt. had fever.

3 periods with varying brands.

What becomes of the alcohol in stomach?

Penetrates organ & is absorbed & into veins.

Eliminated & detected. Portman got rid of  
benzidine with say 1 p.c. within 6 hours.  
but the elimination from 24 hours on was = 16 p.c.

Also though the lungs & skin -  
Twice as much per lungs & skin  
a per urive. What of alcohol used  
amount for. Probably all removed  
in some shape. The intestinal <sup>mucous surface</sup> measuring  
of 80 sq ft. per liver may amount  
for some. In regard to the matter.

2<sup>nd</sup> alarm to dog - killed him -  
In brain of this dog much alcohol.  
It is <sup>often</sup> in <sup>regard</sup> - & similarly in man -  
Some suppose it is used & food  
Other dog this evening.

### Alcohol food.

1<sup>st</sup> for heat.

2<sup>nd</sup> - Build up waste.

3<sup>rd</sup> - To give force energy in weak conditions  
(1<sup>st</sup>) Do not vent up in lungs & as  
may deny this - as CO<sub>2</sub> - may diminish  
& should give heat. 1 lb. of 74<sup>th</sup> units of  
heat. whence in system cools.

5<sup>th</sup> John Ross tells us of 2 boats in  
arctic seas. 2 crews of 6 men each had  
one without of his warm & comfortable



the other cold - as of Dr. Rae, in Russia  
so well known that corporals are  
sent round to smell breath & are  
sent back to save for frost bite  
symptoms.

(2<sup>d</sup>) Diet with less food because  
vitality can't on a lower degree.  
no part of body made up of alcohol &  
other elements. Alcohol not removed &  
such as aldehydes or carbonic acid - it  
remains unchanged -

In health oxid<sup>n</sup> of waste part.  
& alcohol stops this so is injurious  
& healthy person but venous & febrile  
one

(3<sup>d</sup>) Act. of force not large & followed  
by light food is the force generator - starting  
reaction is transferred to vital force -  
If flame be flicking from exhaustion  
of oil put in more oil - If strike  
up with flame & goes out - A certain  
Physician's 2 children - 1 got glass of strong

& the other an orange - wine and  
hearts. Exhaled & same vent  
changed also.

Arterial vessels empty - blood becomes  
darker & oxygenated in small vessels

After years <sup>blood</sup> becomes abundant in  
arteries up to 30 p.c. & oliguria  
occurs. Of wounded arteries hemorrhage.

Prophylactic or preventive of  
disease has contrary effect.

as might be expected from above  
facts. While Dr W. was in year

in Edinburgh. Of 70 - 17 were <sup>men</sup> & of  
140 - 43 were <sup>women</sup> <sup>foreign people</sup> & the  
<sup>others</sup> were born in America.

When stomach is empty food  
absorbs from without most readily.



Thursday Nov. 25<sup>th</sup> 75.

Gangren of limbs occur in old  
tofers only - can give stimulant &  
opium. Not being a food.

Action of alcohol as a <sup>medium</sup> & a <sup>medium</sup>  
Artificial anesthetic venous retardation  
& cerebral derangement

1<sup>st</sup> Drives blood impetuously & so <sup>open</sup> perform  
fills completely. From an anesthetic, with  
103 light eyes & few animalities

This stage is soon followed } 2<sup>nd</sup>

2<sup>nd</sup> Venous retardation & results in various  
alterations - increased loss of power  
of will. stupor or intoxication. Up  
chey color. stupor anesthetic, & 2<sup>nd</sup> stage  
stupor.

Keels 1<sup>st</sup> stroke 2<sup>nd</sup> of applying. 1<sup>st</sup> capillary  
like prussic acid. Symptoms 20 show  
blood in & paralysis. 2<sup>nd</sup> Capillary  
& over distended vessels may force away  
blood into circulation - Distention of pupil.

Doplexia as if clot on brain <sup>cord</sup>  
around myk. - Convulsions rare. Dr. W.  
had case of boy too much whisky.  
common in youth - Chronic kind  
dist<sup>n</sup> of eye - exent. <sup>useful</sup> may be  
dist<sup>n</sup> the other extant. <sup>diminution</sup>  
in exantoms. As if pin on wall &  
suddenly relapse for several hours.  
As if 2<sup>d</sup> dose of the poison.

Form of absolute alcohol poison.  
Treatment of stomach for relief  
nervous <sup>stomach</sup> not too dead. Wash  
out & give aia or acetate ment.  
Dr. W. L. A. M. The poisoning is of  
a chronic kind. habitual drunkards  
Lesions. Stomach. Hyperemia  
red discoloration & swelling of lining  
membrane. (see plates) Catarrh of  
organ. follicle clae & cells accumulated  
within. dyspepsia some set in.  
Of blue = "advisy". Stomach is one of the  
best organs to give way. ruptured at last



like sponge so that liquor soaks thro',  
Effect of alc. on f.j. cause it to  
coagulate. p.p.s. peptone. If not  
detrited as d.j. could be on there.

Caused by ferment & to ling.  
"Gin or whiskey - Drunkers liver".  
(see plate). The color of entrance  
is & whiskey. Lane - tamentated -  
hot nailed liver - Generally of temp.  
use of liquors. A extended period drops  
of stimuli - produce fits & effect on  
Heart, most likely fatty deg. Fat  
may be ultra on small or in it & aged  
to it. The last is more proper "fatty heart".  
Gradual in its influence. Life very uncertain.  
Lumen is horrid & not readily  
thrown of lumen yellow skin with ~~2~~ capill.  
capillaris.

Eggs in brain. Pura sinus full & of  
Pia mater full. Extravasation of blood  
in anterior cornu of ventricle. Brain.  
1<sup>st</sup> puling 2<sup>d</sup> - proclit 3 - cuttati 4  
lyler 5 - Amultati 6 - epitypice.

Aesthetic & loss of sensation  
 4<sup>th</sup> local to pain - neuralgia &  
 in 5<sup>th</sup> & 6<sup>th</sup> according symptoms.  
 Not due to inflammation in the  
 regions.

Effect on manifestation of Brain.  
 Loss of animal functions, loss  
 of control. Sudden notions.

On Kidneys. Albumenuria.

Structural degeneration - fat, granular

Bright's Disease, dropsy, enuresis  
 & ph. dis. cana &c.

Bladder aff. with catarrh - non  
 retention of u. scalding. Enlargement  
 of prostate.

Skin. Erysipels. carbuncles &c.  
 Obtundate boils

Chronic rheumatism, gout, & other  
 aggraves or come all these.

Uses. As local remedy to  
 reduce temperature. Roseau  
 amt. of blood there, add its own



St. of water. Also to harden the skin.  
I present the bones, such with  
recapit of the skull time a day -  
Useful as opposed to patient surfaces -  
for piles, put on as a gangle  
for sore throat. Nippa of the  
fracture to prevent cracking -

For contusions & sprains -  
Sulphate of Zinc. "Kium" - fermented  
piece of <sup>from quantity</sup> paper but has been also  
used to cure it, roots & a pygmy.  
I use exp? before 60 & 80 7. turbid -

No ferment needed, the glutin in the  
juice of catulacis is sufficient. Let  
deft: fall & sulphur it & volatile in  
the cork or thro' the wine is for  
clarif: of gelatine or albumen -  
The liquid decanted & put into tuns  
for export.

Constitution - proper of alcohol varies.  
from  $\frac{1}{4}$  or  $\frac{1}{2}$  to 100. Free alcohol <sup>points</sup> diff: in  
system for wine. Calants in. not  
found in wine. "D. Y." common

in Whisky drinks, not in wine  
but over man as to fraud.

Spirit drinks than wine get.  
crabby appearance.

To explain these elements of the  
wine do not unite. but there is  
not so so the alcohol may be  
superstitious of lead & <sup>peroxide</sup> ~~potash~~ at  
all floats on surface -

Immediate intoxication diff. less  
in wine than same prop<sup>n</sup> in spirit.

Wine dyed in stomach whereas  
al. is at once absorbed. Different  
forms of wine lower.

Spirit may be added too. "Bognet"  
of wine, sort of ether, with free  
acid. Strong in Rhine & French  
wines - so much like the proper.  
Almond felt in - old Greeks  
but in resins - hence their  
spiced <sup>very</sup> the wine.

Sugar must be over lead -  
red.



Fermentation may not be stopped -  
to any old wine etc. they  
allow to acetate acid.

Sweet & dry wines -

Acid. As in Champagne or  $\text{CO}_2$   
Suppl to fine fruit - have odour than  
or acid wines - Tartaric acid. In them  
the wine has lost the sugar. Sulphur  
of  $\text{K}_2\text{O}$  is deposited in cask.

As <sup>is</sup> ~~is~~ <sup>Port</sup> ~~Port~~ wine, = pallic acid - useful  
in relaxed state of bowels.

Colour Principles.

Monday, Nov. 29<sup>th</sup> 1875.

Wines.

Sparkling wine - Champagne, Black  
Volat & Co. rapid in action <sup>Corrects</sup> eff. colic  
Headache & bilious disturbance;  
Correct nausea. As rapid  
stimulant - after copious hemi-  
s. in latter  
stages of fever.

Sweet wines. Thick country.  
 liable to change chyle &  
ferm. of sugar to alb. older  
become weaker from alb. to acetic  
acid. Genlly not suitable for  
weak people or <sup>weak</sup> stomachs. Averts  
thick Chyl urine.

Next = Light & Dry wines - Black  
Burgundy & claret. Little  
alcohol. The latter give vascular  
disturbance esp. B. Headache  
& dry skin. only to vascular prophyl.



Heart heart disturbances - sub. and  
we have found to prevent obesity.  
Sub. astringent i.e. to diminish secretions  
for various kinds of indigestion  
Good heart band of pt.

Dry & Strong perus. Sherry, Madeira  
& Port. Sherry = Vinum Loricum  
Clear - All "vina" of British Pharm.

Sherry - is used to combat  
Spum - s.p.c. of alcohol  
old. Salute in Pharmacy on  
and of constancy of alcohol.  
& no more sugar. Well  
borne by weak persons - Duffin - 5  
out on kidney injury.

Medica - flavid with almond.  
darker & sweeter than Sherry  
Best for old people when either is  
weak.

Port. = V. rubrum, pullian an  
best from Porto - adobly  
elder berries. Porto Co. rooted up the  
water.

New = purple & ecce - old  
dulle & brown = powerful  
acryal. as of the fever. 500  
perhaps dimha - blood kidneys.  
Uses of wine. In fever  
too of seasonal & some is  
cause of most diseases  
among & Brown of Edin.  
The fine wine useful.  
No rule in fever but not  
too early or it is apt to protect.  
Again don't delay too long.  
Judices to guide us. Dr. - Say  
then said. Symptoms are of  
irritation or nervous derang.  
rather than fever. If tendency  
& rest of tissue with  
if ant. drink. The head as a  
guide. if pt. hears or gidd  
eclipses - if with want  
of sleep - or faint delirio  
muttering, still all & some



then wine suppl. Conjunction of  
suffund & dull red. unite of  
trip. vascularis of eye - acute  
action of brain &c. then dart,  
Certain eruptive fevers, effect the  
conjunction. of pale red. lips  
or features are stupid & black.  
use wine. In pneumonia  
chills vivid & perhaps stimulants  
proper. All pin wine in off.  
state of tongue - white furred  
& vis versa when dry & shrivelled  
& brown. Pulse also. if small  
rapid, soft, easily excited or  
fluttering. intrinsic for wine  
or off. dose.

Skin symptoms. if rash copious  
& increasing employ wine &  
also if "tinea" or spotted - eczema  
scuroz or call for wine.  
Circulation, } heart & } capillaries  
pvide to use of wine. Sound of heart

Of weak - use wine <sup>Fulbless</sup>  
Of heart's action - indicate of  
softening accord. to Dr. -  
Capillary circ<sup>n</sup> of computation  
vask. hemorrhage of p<sup>l</sup> m  
bark. skin mottled & hyperemic  
regions arise. Pt<sup>h</sup> skin intact  
is if craned fine. Prostration  
of news fine arise. Res see  
if it is agreeing. See if  
breath is less shallow & frequent.  
food - if off<sup>l</sup> <sup>fine</sup> but less or none  
Again conduct off<sup>l</sup>. Condition of  
tongue - if improves food, i.e. more  
red or if pulse improve - food &c.  
Best in small quantity at a  
time - a spoonful 2, 3, 4. times.  
fine <sup>mixed</sup> with food as stated, says Dr.  
For inflame of lungs, wine & crabs  
circulate.  
Resid<sup>n</sup> fever, <sup>wine</sup> useful after extensive  
suppuration of bone, spine



lip joint - in Gremia, Ponguan  
Known off - as tetanus, Guatalli.  
Neurologi & curas. Some Decayt.  
of sympathetic nerve. Lic. Dolus  
with sweating. In chronic inflam.  
chron. dyspepsia. As a local remedy  
palliative - as in gangrene. In  
malignant pustule. Gonorea.

### Serpentine.

Latin = 3 kinds. 1 = *Ficus*  
*Abis exalla* - from height at which  
grows, bark buds & it flows out  
or by cutting the trees artifice.  
Other form = a solid, variable.  
white, yellow, pink, violet, or  
mottled & variegated. Long kept =  
peach-blossom color dried = hard  
& brittle. Softened with water = succulent.  
odor like that of castoreum. bitter  
acid flavor. Resin = acetum, &  
poultice = 1 lb in alch. & 1 part.

45.3 p.c. of Acetic acid ben.  
53 p.c. = Acetic. Alcohol. &  
using turpentine & water - Also  
Amber pitch. Frankincense  
To obtain the true. Melt &  
strain - If it be.

Dose 2 to 3 grs. internally.  
stimulant.

Surface. To improve circulation  
In plaques. Balsam of Peru  
Frankincense resins, Olive oil  
Melt & run into  
molds - Spread on leather &  
good emollient irritant.

Canadian Balsam or  
= Latin name - for European  
a kind of tree. From  
Abies balsamea - From  
cones & from trunk & branches.  
distilled bark - If good, colored,  
in summer liquid. Olive oil  
not of resin - Direct to



separat = 6 calcium mag. with  
it makes it solid, and make  
pills. Part sol. in spirit, with  
potent = sup. man. with water.

Warm tea. Dose 10 to 20 min  
3 times a day as an emulsi-

2 or 3 dr. bal. of 1/2 L. potash  
a = lavender (or coffee) & occasia alba  
with opium 3

times a day. Action like opium  
stimulating & urinal. syst.

If opium have failed. or for  
same purpose. As an expectant.

for chronic bronchitis, dyspnea.  
or mucous mucus. in pills.

As emulsi & dietetic. with  
nutr. for burns & scalds.

Tuesday, Nov 30<sup>th</sup> 1875.

Turpentine. Latin name: Terre  
oil & part of the tree are  
tapped to obtain it. Obt. from the  
Pinus sylvestris - (Monoclea claudespinis)

= \* Scotch fir. 400 years age. Large  
quantity. Pinus palustris also  
affords it. Is obtained from the  
Scotch fir. remove bark  
& outside wood - 2 in sq. dig  
hole at foot of tree. then to  
cork or trap. piece forms  
a pellicle - "gallipot" if cut. &  
Spagn is poor quality & if  
yellow brown & mixed with  
gum or resin. Honey combed  
yellow & redder color. trap: if  
pau whif impure. Not  
bitter taste. Pellet. 2 parts  
val. oil & resin. Turp: = emp:<sup>2</sup>  
= oliv. resinous. Crude turpentine



245.  
treated as above = 18 p.c. vol. = oil of  
spirits of turp. By re distilling  
with pna. e. is rectified = oil of  
turpentine rectified. Again by  
further = Camphene.

### Oil of Turpentine

liquid clear yellow sp. g. 0.96 flows  
on water - sol. in all ethers.

Very inflammable. Red flame. Bk  
in the <sup>4 degrees of turpentine</sup> p. 2. 4. 76 portion of water.  
Affects eyes by prolongation. Euphrasi  
oil. flame red handed. Fresh left  
handed - Am = spirits left & right.

By exp<sup>n</sup> to air O. & forms varnish.  
HCl this: turp: 2 substances - mixed  
& inflamm. in air camphene is so  
called. but evolves HCl. when  
burned - green flame & turp. vapor  
seen below and flame.

Actions of t. 1/2 dr. warmth of  
abdom. warmth. blood detd & parting  
of parts - rising above & diffusing the blood.

Rapid in its action. odor like  
violets & so, changed in a night.  
Also in perspiration & the feces.  
Pulse more frequent, thready, few  
beats. soon passed off.  
By 1/2 or 2 drs. effect diff. as  
nausea & vomiting fainter &  
stitch marks. Pain like lumbago  
less altered. not so free. Deam  
of skin with fever. scalding  
fully. Blood in it for long  
of kid. also female. Rapid in  
action. Symp<sup>t</sup> with carbolic  
or p<sup>er</sup>lym. Nausea, nausea &  
Leucis Solium top<sup>er</sup> wor  
expelled of it. In <sup>some</sup> cases  
intoxication so alcohol. Now &  
then patient. Pain in colic  
or trace. Used in the  
Treatment of many diseases.  
When sup lost a few  
as in pl<sup>o</sup> or back & quite



helpless. pills of unit. aspirin extract  
of lochia. In the small dose 20 m. 1/2  
dram. In certain instances, when

And is to be given. 1/2 to 1 dram 3  
times a day. Some times it is also a  
valuable expectorant. For hemoptoe  
to be given for blood. 20 m. 1/2.

For sudden onset of the fever.

Can be used with ease. for head affec-  
tion epilepsy. toward of paroxysm.

With 1/2 oz. camphor extract 1/2 of temp.  
safe purgative for quick action.  
for certain cases of palpitation  
mania. 1/2 to 1 dram 2 per day for  
young women.

For eructus septatis or stercorari.

Changes vasculum. to regulate  
pupil. for amerois. not  
equiv. to iodide of K.

In Lemia 20z dose - prepare  
ph. by stirring up 1 or 2 meals  
Best time is at 5 am. floating  
on water. act in 20 minutes.

Kills the worm. 2 c℥s & 3  
turpentine for full doses.  
Lesser disease by erugina.  
Colic - flatulency. In all  
these vitally salts on  
surface apply calomel  
Wring rag out of hot water  
& when in contact with the  
part ready on outside. 1/2  
D 3/4 hour all pt. can stand  
for a period of time of  
abdomen & for chest.

For scabies.

As a local remedy for various  
kinds of inflammation, as  
an injection for dysentery  
& chronic diarrhoea.

Administration. Make  
it palatable as oil of  
103 y℥s of 102 eggs. Oils  
of Camellia 1/2 oz oil of  
cinnamon & nutmeg.



Done of mix<sup>r</sup> 1/2 do them or if less  
put in more oil.

See above for the same.

B. Ph. kind. - on for blisters  
{ oil turp. camphor. soap for  
plaster for sores.

Acetic acid, oil of turp &  
for sores of chert in cathars.  
viii &c.

Also in mercury

Sup - yellow wax. resin & tar  
good dressing - perpetual Herles  
{ removing cuticle & getting the  
on -

For burns & scalds - where  
stimulants

Other comp<sup>d</sup> of turpentine.

Herb. Simulans =

Digitalis

Varieties. All plates. Flowers  
<sup>yellow & purple.</sup>

of 2 colors: D. purpurea is

preferred B. Ph. in 1775

first and. For flowers -

Bot. family - Scroph.

on dry ground on slopes.

leaves used - Great medicinal

ground - Slopes of leaves.

wrinkled dark green - Drying

below. bitter, disagreeable.

2<sup>d</sup> year growth of leaves

best. 1<sup>st</sup> narrow & small.

collected when in flower.

Digitalis <sup>var.</sup> activa purpurea

leaves like, thick dark colored.

but is simpler & not strong.

Same active - solid whorly

fronds <sup>intense</sup> bitter. 200,000 lbs

of which 1/4 is bitter by it.

Soe all sup. in the D.



Does not form salts with  
acids - known  $\{ SO_3$  found in  
it. looks like tar. stands in  
clay & division in color.  
Dil with water from imp.  
HCl. as it yellows & then  
white. To make diptilum  
fit all. extract & acids  
in water with  $SO_3$  - Acid  
Ain. the very falls of the  
apple collected. This is treated  
with alk & the  $SO_3$  etc.  
Sol. is evap<sup>d</sup> & extracted &  
the  $SO_3$  etc. & have some  
diphtilum in sol. Ex an  
important medic. 30 grains  
as strong to powder  $\frac{1}{10}$  &  $\frac{1}{6}$   
of sugar dose -  
Operate on urine. drives it.  
Lessens Area Cl. Prop. &  
Lymph & increases uric  
acid. but don't off. acid.

Diuretic Prop of urine.  
Pulse at first accelerated &  
the diuresis. Less free  
Genitum system, nervous system  
paralysis, genital. Stimulates  
absorption.

Tendency to reduce coarseness  
of skin - <sup>more</sup> part exists mainly  
Also found in —  
= a bitter extract. & best  
Pyro. digestion has been  
obtained. produces diuresis  
narrower view than of  
urine.



Med. Decr 1<sup>st</sup>, '75.

Actions of Digitalis - On the  
in ~~rather than on nervous~~  
system.

at <sup>1<sup>st</sup></sup> ~~slightly~~ retards pulse but  
afterwards accelerates it. even to 120.  
& afterwards fallen to 70. Val. less  
& softer, requiring cessation for  
spaces of 2 seconds.

Acts on heart primarily. Lengths  
interval between 1<sup>st</sup> & 2<sup>d</sup> sound.

Acts specifically on capillaries  
causing them to contract.  
Inj. into ear of rabbit ends  
of blood vessels.

But. as Stimulant. Impulses  
of sympathetic nerve. Increased  
excitation - a cardiac stimulant  
or tonic - i.e. act on sarco-  
tissue of heart. On a weak  
heart its effects are evident.

In overdose - especially from  
effort is, working heart. Then  
taking digitalis - ple chest not  
sit up suddenly.

As a diuretic differs from squills  
which effort kidney. & exalts solid  
constitutions. often deranges appetite,  
nausea - light infused.

2 Dreyer's (1) Diuresis, blurred (2)  
a spot or ring (with per. color)  
Has accumulative effect. May  
be administered to eye till  
suddy - practice a urine  
water signs & be on guard  
etc.

Intoxication } or dries -  
Small, slow, irregular pulse  
Cold surface. clay. Crumbs  
head ache, diuresis of  
egit. Kidneys active.  
Following case of poisoning:



a strong young man took influenza  
cupful. slept soundly & took  
another and took work, felt  
unwell, weak limbs, faint, &  
sent for Dr. in consultation  
vomited & returned & expressed  
intense headache & pain  
in epigastrium. Change  
was with extreme violence.  
weak & the feverish - strong  
troublesome - 203 that have  
been taken in 100 cases with  
killing - 20 & 60 m. children  
3 or 4 times a day for treatment  
Encourage vomiting, Antidotes  
Stimulants, Al. Ac. complex  
Opium.

Uses. Febrile dis. cap. eruptio.  
marks. sent for typhoid.  
anti-pept. acid. - Gout. anti.  
phlogistic agent. not useful  
for inflam. in head as marks  
the symptoms. <sup>gives rise to</sup> nausea

"Opium of the heart" as a  
Tonic. Best as tincture.  
After a blister is removed treat  
over with dij. powder.

Curative is simple.  
Agitation of the heart, its  
violence does not now require.

Bad for Aortic Regurgitation.  
Useful once for pain of in-  
tercostals. - Osceola of -

For other pain of heart - For  
Anurium. & cause defects in  
Sac of tumor. At one  
time hope for cure: in phthisis  
for hemoptoicis - With  
Jussieu and drinks cough.

In bronchitis &c. In Anurium  
often useful. acids, hydrocyanic.  
Best for those of weak habit  
of long & hard for as strong  
habit of body. By effect of  
suspension on swollen part



if pain some time & slow & ac-  
dy. benign. In acute if  
Atom unity & don't  
use it - but do if fluctuation  
easily produced.

Preparations. Powder.  $\frac{1}{2}$  & 2  
grs., dull from fruit odor  
& bitter taste. Some cases  
& detentions -

Infusion with 1 dr. of leaves  
boiled - 40 in 1 pint water  
stand for 4 hours - strain.  
Lose out cumins. 2 drs  
rose.

Tincture - 2 1/2 oz leaf & fruit  
of fruit. 1/2 to 2 dr. doses.  
Fresh leaves. given in  
2 dr 1/2 - 1 1/2 to 2 oz (= liqueur)

White - acorns dip. rather  
against using it. Dr. Sayer  
of Edin. took any acct. of  
accidental. Dr. W. in consulta  
some dip. & pl. who had had no success.





Fused pit for med. use. in crucible  
Some pitted & bent off. Runs out.

In cakes like pyramids. top  
sooty. inner surface still fog.  
bottom translucent. mark. D's  
20 p.m. of heat. Test: light  
temp. pints with hot S & A.

$SO_3$  &  $CO_2$  - with H. - H.S. sept.  
With HCl. with S. of ant. Sol.  
yellow - transparent. This seems to  
test. H.S. this this ppt. of orange red  
color = "Red S. of anting" in Phosmy.  
Like that of H.S. this Sol. of As.  
but with a. sig with nitro acid.  
acid dissolving test ppt.

Alkalies then down at. sept. A  
little of phos in water fine wet  
color & ppt.

add Sol. nitric acid - Antimony &  
Copper precip. & bars with at.  
make up in glass & is ardent in  
mils. 2. Concentric inside = the most by both  
fracture visible -

Adulterate = a. H. Ph. 12 U.  
 Tent.  
 " make Salu. as above & with the  
 gas as stated. for Os. an S<sub>2</sub>  
 & do not make the Os.

Effect differ much with the  
 individual. Is act. for the  
 suff. & is act. to adults with  
 anemic. or 2<sup>d</sup> of its mode of  
 admittin. As found not  
 so strong but mixed with  
 water act. acid found & the  
 is strong.

Also a sedative altitud. in  
 fresh air 1. 5 to 10 p.m.

St. Cl<sub>2</sub>

Chem. comp. suff. & the Sanguinal of  
 acting - Etc. used a liquid.  
 the liquor ant. chendi is  
 that one cup? in med. use  
 of 1/3 of S. & spirit of Cl.  
 to make its pers. in flask



heat to receive. Still boil  
15 min. Color deep straw  
yellow of  $\text{Fe}_2\text{O}_3$  1.470. Fumes on  
right - at upper sol. am.

with water - milk like fluid -

Quoted with  $\text{Fe}_2\text{O}_3$  & silica stages  
was reddish color & orange upon.

Detent with ferrous of K.

Use as a cortic. Causes  
flow of blood to part & ends in

fungus secretion like  
milk and drift. is penetrating.

dry slough & 5-6 74 days

of  $\text{Fe}_2\text{O}_3$ . Ant. is better than  
of  $\text{Fe}_2\text{O}_3$  - Press out mass of liquid

app. & prevent part of  
tumor & the a drop of water  
to stop the milk action.

To bits of osseous substance &

dissected bones. Carb. spread  $\text{Fe}_2\text{O}_3$ .

For suicide. very powerful for an Army  
Dysentery & cholera 30 & did in 60 $\frac{1}{2}$  hours. It  
has blacked & softens in milk unless in milk  
of  $\text{Fe}_2\text{O}_3$  in water. Antidote = water. St. O  
found from & albumen good. Could = milk of ant.

Thursday, Dec<sup>r</sup> 2<sup>d</sup> - 1875.

Antimony oxid. = solid - taste  
eyes - wh. at ord temp. or nearly  
yellow - sticky herb volatile.

Mixt. HCl. "biter of ants" - with  
Tart. acid = tartar.

Ironide of antimony not used  
alone in med.

Tartar emetic.

Also Antimony tartaratum or  
Tartarum = (Sb + K) tartar.

3 oz Cream of tartar and  
6 oz Liq. of Ant. mixed & spread &  
mixed well with glass rod. to  
form a mass to run 24 hours  
& for once parts of water  
in cooling exp. of this salt  
found & a 2<sup>d</sup> solution parts  
covering.

Chars. - Crystallized Potash  
retained in strait & etc



of eyes on exp. effluem. was  
course wt. powder no taste no  
smell but taste of the water.

1 15 or 16 <sup>water</sup> at 60°  
1 2 2 2

Plant umbellagine subtree in it =  
partite plants = trunk with  
articulated branches - 2 kind of stems  
' Sterile proc & 2 <sup>filices</sup> proc. - but  
also p. in other tartarates. Sd Sb. with  
Came - Exp<sup>2</sup> to flame - When strongly  
heated turns away -

Not sol. in spirit. Poisoning like  
much like As. & test for it  
effects similar in some respect.

Differences important as Sb. given  
as med. in. PHS. ppt. orange.

As yellow ppt. <sup>color</sup> probably due to tea.

Mitro HCl. and diff. Anal. -

two pr. of cat. cur. gives orange red ppt.  
Marsh's test similar ppt. in dep<sup>n</sup> of Judson  
in Sb. 2 rjs. outside wk & inner dark  
As. & central part of inner brown <sup>interwhite</sup>.

Further test, M<sup>o</sup>. No<sub>2</sub> - wt. opt. exp.  
no change with ferozyd. of the falls  
dig - brown ppt. alt. cald. drop  
of it on glass expt. in  
tetrahedra.

Reactions of Carb. smelt. Local  
& Constitutional. pimples, felt as  
if shot under skin. matter  
& suppur. pustule of orbicular  
plattis & center of dark spots &  
red ring around base - like  
that of variola. By the  
pus is dis up & detaches &  
skin beneath sound. Of ulcers  
can <sup>be</sup> seen. Also in numerous  
members after given for days  
mounts & present. Pimples  
now more elongated. Look  
like fish. Bluish discharges.  
Gastric mucus numerous reddish  
blue & elongated. Any mucus  
membrane. Largest of platten



warmed & sprinkled with powder lat.  
Cucurbit.

Constituent or remote effects -  
Stimulate absorption. Aid in

deepening swellings. On the  
secretions - sweaty & so called -

increases flow of urine & more  
plentiful & less chlorides. Increases  
in bile & gastric juice. As an

expectorant -  $\frac{1}{2}$  to  $\frac{1}{4}$  gr. for all above  
days of stomach & nasum

Contra-stimulant action & Cardiac  
sedative. When does not act on

the secretions &c - Large doses -  
 $\frac{1}{2}$  to 2 or more. <sup>rather</sup> No nausea

"special tolerance". & pl. take food.  
Small doses. <sup>utilized</sup> for pneumonia.

Acts by contraction for medulla oblongata -  
Antinomial saturation, known  $\frac{1}{11}$  g

appearance of throat & mouth, under  
tongue may see 2 or 3 granules. Special

to sore throat. Small soft palate &c  
all affected. On looking at throat see  
mucous swollen & look color -

2<sup>d</sup> Sp. removed from digestive system.  
Loss of appetite. hunger & watery  
stools.

Sp. influ on resp<sup>y</sup> organ. Causes  
turbid of inspir<sup>y</sup> to beat of heart.  
Tends to lessen blood in lungs.

Sp. act on nervous centres. ~~Causes~~  
par. compen<sup>y</sup> of striking in lower  
limbs.

Sp. on Circulatory system. as  
seen by its effect on pulse etc.

Poisoning = 4813

Recoverd. after 448 gr. = a spoonful.  
& again allowing system open  
small quantities every 24 of 1 gr.

Difficulty in swallowing - No  
change in consciousness - Coldness  
& anxiety. Pusill. like rice  
water. Voice hoarse to extinct.

Sp. by pt. blue in face. like a. color.  
Ment<sup>y</sup> & sens<sup>y</sup> - I don't recall the  
same. Dissimilar features =



the fruit of St. yields more  
than as to treat <sup>the</sup> Pt. ralis, <sup>or</sup> after  
suffering - Rapid about the system, as  
found of the same. Cleanse pouring  
the liver & Pt. has been  
found of repeats small doses.  
Catappa

Gallii & tannic acids -

Bark & Cinchona were  
forming used - also tincture of  
bark - Strong tea probably  
as good -

Not used in med. so much as  
forming - but good in <sup>the</sup> <sup>inflamm</sup> <sup>of</sup>  
croup.

At first as an emetic -

Not for very young infants, say  
under 12 mos. especially - same action

For pneumonia <sup>or</sup> before hepatization.

In pneumonia of children food -

For capillary bronchitis - as an  
emetic for severe sore throat  
& Quinsy -

For hbr when becoming tender  
& about to coalesce  
Lutariza cutting for "D. 5" but  
not so much, since Chloro  
Hyasaur &c. cause in  
For Couper, catarrh &c.  
For phthoria or fullness of  
crucata. the self &  
cyrainpales.

As extant agl: - for cause &  
Obj = from scars. if it  
ulcus.

Afto abruption every 6.

### Preparatus

13 Sherg am & 2 pro. Vit. curli  
=  $\frac{1}{4}$  pro to 1 & am. = Natural  
wine. For children one 2 yrs  
 $\frac{1}{2}$  or less powerful - Best  
wgy 5 & 10 mints. & pt.  
must drink much thin  
juvel. Soft in large dose.  
than in single doses not so much



<sup>of the</sup>  
Magnesium 1 salt & 2 can.  
Heat in sol. by 1 1/2 g over 1/2  
Or the of salt =

Monday, Dec 6 578  
Red S. Preparation for Red S<sup>2</sup>  
& SO<sub>2</sub> - Impure to have proper  
temp<sup>r</sup> & to keep it up -

Diff. kind of Sulphides than  
above. Red S is not true Sulphide  
∴ In this paper add SO<sub>2</sub> <sup>Stiff</sup> <sup>hat</sup>  
Chars. - Solid powder grey  
red & trib<sup>l</sup> to sulphur. It  
not sol in H<sub>2</sub>O. but in mil.  
acid. in Nit<sup>ric</sup> sol. also  
sol. in alk<sup>ali</sup> - best reagent

Has no smell nor taste.  
The form tart-emetic <sup>Stiff</sup> <sup>hat</sup> is  
tart acid. Herms. mineral  
more brick color. Gold ant.  
red yellow.

If boil S<sup>2</sup> with lime water &c

### Action

in 1/2 gr. doses. or saw  
on Catarrh re-plugs  
as expectant. 20 Ops. as  
emetic.



Pison - Not much and perse  
fully with sugacum - & with  
Calomel &c. Chronic skin  
disease. In septal aff<sup>ns</sup>  
as some throat. In chronic liver  
Cron. Rheumatism - Dose 1/2 or 1/4  
grs. better Tar. emulsi.

In "Glover's Pill" = Comp<sup>d</sup> pill  
of chlor. of ant. & ~~oil~~  
Comp = St. fujacum. castor  
oil. or treacle - Turn red  
then change to yellow sig  
to Chem. change - are now  
irritat<sup>g</sup> - Wt. of each pill  
= 5 grs. & 1 gr Calomel & 1  
of red S. of St.

Pulvis antisymp<sup>tic</sup> comp<sup>d</sup>  
= James's powder = pulvis emi  
not really James powder  
but an imitation of the  
true powder James's Patent  
his powder & not add to  
irritation

17th  
Lith. Lith. aut. & 2 of phos. lime  
mixture with H<sub>2</sub>O & product  
= Antimonyric oxide & CaSO<sub>4</sub>  
Probably Scopel & O. takes its place  
Hutchinson says used as  
animal matter.

Is a coarse granular  
powder no odor or taste  
does not dis. in H<sub>2</sub>O.

Evils in H<sub>2</sub>O dis. to some extent.  
St. Ann test. Spl. of lime,  
& St. acid. Limestone & Cl &  
~~etc~~ Sometimes yellow color.

Variab. as a crystal. Calc. or wh.  
1 lb or more no sp. & again 1/2  
to 2 gr. name twenty gr.  
Dep. on ant. oxide of ant.  
Residue.

Dose of Ind. p. = 255 grs. &  
Diaphaniti or appetant.  
Containing sedative



1<sup>st</sup> = Veratrum = 'album  
 2<sup>nd</sup> = viridum  
 3<sup>rd</sup> = viridum  
 Fam. = Eleutheriacae. Fin. Stony  
 & Grass. Veratrum album Root  
 acid. tetracosyl, flag scumlet  
 Description of the plant. Root  
 stem pubescent leaves  
 in corolla - round or praeform  
dark solid unbeld masses. Stem  
cut off closer to the ground, and  
flam red of the acc. of S. att.  
(Rhizom rather the root) Alkaloids  
ferdine - by H<sub>2</sub>O sol. wh.  
color - Action Small dose  
as on nerv system -  
sedative. Is a powerful stimul.  
Scars, sweatings, skin  
erupts more freely. Stom.  
Lays down - nausea.  
On skin or pigment - eruptions  
of fruits - Violent action in  
over doses. Doubt & Contra  
indications - Is not much

used & stuff. As water is 2  
15 ms. In U.S. V. Viridi.  
5 to 10 ms. Shd not be used  
after nausea begins.

### Veratrea

Small seeds - 2 lines long  
thin at ends - dark brown  
shiny - enclosed in a papery  
surrounding & the fruit  
integrated. 3 folioles 1 line  
broad 6 long.

London powder & fruit  
Veratrea. First mark } 24 hrs  
steep & the powder is  
water <sup>then</sup> shake well in  
vessel & the sift. Read  
now 8 1/2 - alcohol.  
Next distill in 12 glasses  
of 4 1/2 & ~~distill~~  
in water & shak & filter &  
clear liquid is treated with  
am & veratrin is prod.



Div. - HCl & chloroform &  
division in set & purify it  
Chas = powder wt. & 2 = a  
resinous rocky substance.

Lumpure St. - added & reacid.  
but sept- of above process. V<sub>2</sub>

Known by color as above -  
is alkaline - test paper - turns  
Salts with acid. Tests. SO<sub>3</sub>

~~HCl~~ & flooded color

NO<sub>2</sub> - same but fades -

No smell, but bitter

taste. Numbers follow the  
enumerations - violent sneezing  
on nose. on skin. Eruptive  
V. emp. in med. as sedative  
1/40 to 1/20 gr. Watch effects.

As a local aq. su Pharm. Argentine  
8 gr. & p. d. oil of no<sub>3</sub> acid.

Empl. dul. 10 gr. & add

5 ether & with spirit for  
drops of eye. Causes horripilation.

In unguis caton & a resin.  
For intolun of eyes - <sup>Hypodermis</sup> Slight  
cont. of pupil. Chronic.

For menagria - tritium & the  
Aolun. In of intercostal  
unus. In one dose. Wh.  
V. alba - fist. opacus & c.

Aconite (Aconitum)  
from Acone - a city where it  
or "rocky ground. Many

sp. (shows plates) and one  
used in med. A. Capellus  
& Haw. Ranunculaceae - same  
as buttercup. Kills parasites  
& tape. Partur. eat it <sup>harm.</sup>

Flower - green calyx -  
2 cut. leaves blue, below O leaf  
Capellus for shape of root.

Active purple in seed & root -  
esp. latter - wh. grows in  
fernery - pulled in spring.  
Root chous. fresh like a





Canot - 3 or 4 in long. Shiny in  
 sun. Chocolate color, smell. Seed  
 not be mistaken for horradia  
 root. Diff. nat families. h. r.  
 root is quite outside, other not  
 more tapering. Taste &  
 find diff. Acute comes underneath.

Aconitina Dind 1825. Pella

for tincture of a. with SO<sub>2</sub> &  
 the lig. a. in ppt. this unite.  
 Aconitine acid is broken up & Sulphur  
 of a. is found by addg. a. in  
 A. in SO<sub>2</sub> ppt. & a. freed.

Purify by dist. in SO<sub>2</sub> sol. & ppt.  
 of a. in if tinged clear & clear  
 in a dead & frozen.

1/20 of gr. one found a small  
 bird - Not often pure 3/4 apt. &  
 have admet's solid amorphous  
 st. pdr a little trap. mass.  
 not vol. heat decompose &  
 disapp. in pure a. liquid &  
 yellow fluid. & solid on cooling

not sold in the ocean but is  
in acid. } by in 50 tons  
is the 150 cord. For its  
sol. in all. } coaster  
also. not } <sup>salt</sup> cuts.

Causes numbers of skin  
ppl and in local agl.

Augmentation. 8 pps of a.

$\frac{1}{2}$  or 2 rub. spl. 9 13

land. rub with the alk. salt  
& then add the land.



Tuesday Dec<sup>r</sup> 7<sup>th</sup> 1875.

Mutter alk<sup>2</sup> from Acronite is  
Acronella = weak alkaloid = Like  
<sup>constitua</sup>  
{ nicotina - is pot<sup>r</sup> with diff<sup>r</sup>ly  
nicotina  
1<sup>st</sup> makes them all ext<sup>r</sup>al.

pl<sup>r</sup> + ad. Sol<sup>d</sup> Soda + ppt.  
washed & treated with absolute  
alcohol. Is remarkable for high  
opt. = 427. Strong crys<sup>t</sup>: tendency  
Very pretty in crystalline in par.  
light. A sort of well of fire, like  
incandescent light. Acronitine  
acid from diff<sup>r</sup> sources - w<sup>t</sup>  
cryst. very com. no odor.

Actions of Acronite - In concentrated  
sol. Numbness of nerves & then  
a tingling. Pale then red & then  
nut<sup>r</sup> color. Intensity acc<sup>r</sup>ding to dose  
5 to 10 m. produce warmth. Respiration  
rapidly abolished - reflex lowered  
but deeper - eye pain. Also

rotin of vessels to circles. Temp  
reduced. esp. in fever. Patient  
also complains in symptoms  
of tingling & soft palate. If  
any one does not continue, esp.  
if spent at 2 hours pulse  
reduced & slower. Pupils  
contract. nausea. Features  
pale, anxious. Clamy persp<sup>n</sup>  
of a 3<sup>d</sup> at 2 <sup>hrs</sup> more. Pulse  
still lower, <sup>in</sup> its sunk-  
ling of constitution. Headache  
sometimes. Sickness. & of 2 1/2 h.  
No sleep & sleep.

Is therefore a direct sedative.  
In previous doses. heat also  
red? sickness. vomity - fainty -  
Destroys eye 1<sup>st</sup> } of nose  
2<sup>d</sup> confusion 3<sup>d</sup> } shock -  
Great contraction of pupils -  
delirium - great weakness -  
pale dull - ordinary.



Treatment. get rid of it out  
of system. in Tart. acid.  
Stimulat & An. & comp. pr.  
Use. As remedy 1<sup>st</sup> Rheumat  
disposition. 2<sup>d</sup> headache - is old  
heart weak or silent of m. 3<sup>d</sup>  
when any neural impediment  
as valvular incompetency & 4<sup>th</sup>  
irritability of circulation.

Persons of phlegmatic habit - early stage  
of acute disease, as inflammation -  
early reme bit. Best in tint.  
5-m. & 2<sup>d</sup> dose in 2 or 3 hrs &  
then a 3<sup>d</sup> at 2 more hours. After  
that 2 m. ev. 4 hours. Best  
before exudation taken place -  
Drople pain, heart, pleura,  
also for erysipelas. Later gave  
it in small doses - then he  
used belladone.

In some cases when sent to bed  
also at times for neuralgia, rheumatic  
joint pain on surface or sponge

In multiple 5 m. dilute & use  
wells & injct. radical cure.

(1) Flemings tincture & the  
Ephraim ore.

(1) Take 16 g root, slice, & pour  
alcohol over till it is 2 1/2 oz  
of the tincture. Strong color.  
Dose 2 to 5 m. caution - when  
tasting it - very poisonous.

(2) Also for root 2 1/2 oz taken  
& digest with 1 pint of proof  
spirit - 5 to 10 m. Dose. Always  
note ph. pr. in presenting this.  
Dr. - last time with 80 drops  
taken in 4 days 10 drops at  
a dose.

Extract - impure juice  
Dose 1/2 to 2 ss. for &  
marian.

Alcoholi extract is better  
when tincture always to  
symp. dose 1/8 to 1/4 ss.



Hydrocyanic or Prussic Acid.

Vapor of it killed a bird  
in a few seconds. A dog dropped  
dead after a few hurried sniffs  
at <sup>the</sup> ~~the~~ <sup>in</sup> ~~in~~ <sup>that</sup>  
Also in eye.  $\frac{9}{10}$  of gr.  $\frac{1}{4}$  will  
kill a man.  $2\frac{1}{2}$  gr. a  
Chestnut. even eaten. not  
fatal. 5 minuts lost time  
& 2 minuts. - elms & Glob  
scaly incum. - tall hills  
like a state of typhoid. 45 min  
is lost in mind except  
when I was very small.

$1\frac{1}{2}$  Anhydrous & 22 hydrous

(1) 20 water (2) very much. & styptic  
of 2 drops of (1). per ounce.

Prussic acid = 5 p.c. i.e. 5 grains <sup>acid</sup>  
to 100 of water. Brühl ph. = 1.6 or  
2 p.c. Before purity be sure  
know it exact styptic. Diff. results  
for same p.c. on diff. people &  
on same person. Volatile may  
be weakened by keeping.

Best fin is 18 on only in a  
bottle. relative I do slight  
in log. Comp =  $\frac{1}{4}$  N C<sub>2</sub>  
It contain strength. take  
108 parts acid. drop in  $\frac{1}{2}$  of 10  
as long as any ppt. filter  
on proving wetted & dried  
filter. Again weigh with ppt.  
& subtract on previous =  
wt. of ppt. & dividing 5 fine  
you want. of anhydrous acid.  
Remaind 5 is that 27.33 is  
the gth. of comp? & of anhydrous =  
134.56 is. r.e. as 1 to 5  
Ph. pr. Take  $2\frac{1}{4}$  salt  
7 lbs. acid & water.  
Salt dis? in water & or fine  
but into about & add some  
water - apply heat when  
17 oz have come over. &  
now add 3 oz more water  
Express fine part of precip.



comp<sup>d</sup> of eps of iron &c - The  
 iron eps. as  $\text{FeSO}_4 \cdot 7\text{H}_2\text{O}$  &  $\text{FeSO}_4 \cdot \text{H}_2\text{O}$   
 & water remains - & there are  
 septum into constituents. & there  
 an interchange takes place  
 the  $\text{Fe}$  gets  $\text{H}$  & the  $\text{K}$  gets  $\text{O}$   
 &  $\text{K}_2\text{SO}_4$  results & the other acids  
 hydrogen and may be used for  
 for Ag of all of  $\text{HCl}$ . simple  
 decomps. also from  $\text{H}_2\text{O}$   
 &  $\text{HCl}$  of distillation - also for  $\text{SO}_2$   
 &  $\text{H}_2\text{S}$ . & partly extensively by  
 shaking in a bottle (well stopp'd) a  
 mix<sup>n</sup> of  $\text{K}_2\text{O}$  & tart. acid in water  
 A wh powder left in bottom of  
 bottle - = Clark's method  
Character - Clear troph. crystals,  
 like water -  $\text{H}_2\text{O}$  S. 586 - floats on  
 water. Don't mix alone but  
 with free arsenic. & ferrous  
 & a very weak acid - even  
 $\text{CO}_2$  dissolves it. Freezes above zero  
 & melts at  $80^\circ$ .

Its permanency depends on  
how it has been made.  
Some samples keep its a  
coloration and odors  
in a few days - The taste  
efflu. of hot pyrites  
As kept in cover bottles with  
paper & kerosin drawn.

Knowing its odor - peach  
blossoms - same smell in  
Nitis-burgole & few persons  
dying in extreme ways.  
Should use various tests. In  
oral cases get all for blood.  
As if for stomach - might  
have been surgically intrud  
to stomach to incriminate some  
person - May be found 23  
days after death. Sarcitis  
diff. by its volatility & mostly  
of other odors.



Chem. tests (1) with Ag<sub>2</sub>NO<sub>3</sub> - silver test.

(2) Iron test (3) Sulphur test.

(1) st. ppt. (2) blue (3) red.

(1) Ag<sub>2</sub>Cl<sub>2</sub> - 1 and - 6780 water can  
be recognized. Dis. in air. & sol  
in H<sub>2</sub>O - if strong in cold and if not  
- hot - is curdled by heating.  
By coll<sup>d</sup> - dried & fused off gas  
which burns with rose red flame.  
To pr. of ppt. suff. to do this - this  
is 2 drops of 50 pr of amlgd.  
H<sub>2</sub> acid -

(2) With this HCl - two rene. 1 and  
- 1520 of H<sub>2</sub> - ~~not~~ Iron test -

(3) Sulphur. the H<sub>2</sub> will be  
ejected to Sulpho gas of iron.  
To do this take metal piece & put S of air  
on an & some H<sub>2</sub> & other & flame  
geth & heat. Now add piece  
salt of Fe. a red color can act.

If metallic impurities, pass to S  
this & an ppt. of none remaining clear

Wednesday, Dec<sup>r</sup> 8<sup>th</sup> 1875.

Actions of pressed air. 25  
5 m. inwardly - no disturbance  
of 5 to 10 m. or often admitted  
w<sup>o</sup>t complaint of pressure on  
forces. throat narrow -  
Disarrangement of spinal curves.  
Temp. lowered. style fails - Es  
pression also outwardly - Prof  
- lost life of strong p. a.  
falling on his arm. the  
cutaneous skin. Case of cleft  
of broken bottle - fatal. most  
action is the resp<sup>n</sup> mucus  
membr. so even suff<sup>d</sup> that  
bring by mouth of the part  
inhalation & lungs. Among  
electroplata & feeders using the  
new hand must usually  
desist till accustomed & it -  
hand respiration weak pulse  
narrow loss of appetite.



875.  
26  
un  
ut  
-a  
-  
un.  
-L  
-P.  
a  
the  
cally  
ent  
un  
to  
had  
ng  
the  
illy  
br  
-.

When the spring is acute is  $\frac{1}{2}$  of  
large quantity suddenly. In max  
quantity.  $\frac{1}{2}$  molaris - In 2<sup>d</sup> class  
specimens - signi marks. 3<sup>d</sup> when  
minor quantity. chronic specimens.

To detect p. a. follows:

Care - several instances sh. be found.  
Let apart contents of stomach. &  
clear. can at once apply tests.  
If not ditill<sup>the</sup> liquid -  $\frac{1}{8}$  of  
all the pour over. If mass.  
add  $\frac{1}{2}$  pint. Lay with slip  
of wt. paper moisten in the  
test & dip in.

Take a wide mouthed bottle &  
put in about  $\frac{1}{2}$  pint contents  
& over mouth put glass with  
int. silver. also of the reports  
with fine glass.

As the feces is to penetrate the  
body before opening & apply to place  
direct to opening.

7  
p. m. Clematis. not  
stiff. blood non-coagulable.  
blue color from p. blue found.  
A few cases when blood has  
arterial appearance. all depend  
on the time when last clapped -  
ment of the p. a. may be  
eliminated. Blue stains on  
gall bladder, & eosinosis.  
Occasionally tinged with  
slight black red or violet tint.  
Asphyxia. much <sup>cases</sup> blood in right  
aur. & right ventricle. Eyes shining  
& fixed. This may be maintained  
as it is stimulated by effusing  
arteries. Order of p. a.  
from months.

Treatment. With symptoms  
as in case of p. can be made  
to survive & how will come  
around all right. Proceeding  
will depend on condition of p. a.



Remain firmly tucked into a  
pencil or by some pump.  
If not covered are cold (ice) water  
douche or sponge of milk fully 4  
ft. or spritz face & chest.

Loosening in Intestine of atropia  
 $\frac{1}{32}$  of 1 gr. in 10 drops of water injected  
into arm - even  $\frac{1}{2}$  of a grain.  
Inhalation of steam & application of friction.

Cl. in only per rectum & to induce  
Cl. pos. Artificial respiration if necessary.  
Sulverium planum or  $\frac{1}{2}$  of mixture  
of caltheda into trachea.  $\frac{1}{2}$  pt.  
too cold but use cold without  
into warm bath. O pos &  
N is time.

Employment of pt. d. for stomach  
cough. in Spasmodic aff. as  
whooping cough. belladonna safer  
for caltheda & phlegm as a substitute  
of cough - for art. cordia aff. as  
hypertension to diminish impetus. In phlegm  
in trachea.

to check vomiting - "morning sickness" for neuralgia - & pain of gall stones & urinary calculi.

Usually  $\frac{1}{2}$  dr. and 5 or 6 oz. water with some opiate, always strong. Caution when taken a crack in shell. Dose 2 m.

5 to 6 m. As Digest or in combi. with KO or  $KO_2CO_2$  & iron addn yellow p. of p. pudd. so we weaken the effect. P. A.

So the action prompts of

### Bitter almond.

Fruit like peach - more green.

When ripe may split longitudinally & expose nut. Small lobes of tip for the radicle of future plant sprout. The kernel contains 1% thick sweet oil extracted by pressure - unlike that from sweet almond -



Clear sweet oil - mixed with  
alks emulsion. Ammoniac =  
2<sup>d</sup> constituent. Compound of Acid &  
{ Cor. Sub<sup>t</sup> is like album yet  
it forms emuls - 3<sup>d</sup> - Amygdaline  
is not avail. in S. alk (like fatty)  
but is in alcoh. - Of bitter  
alms be distilled, get out of  
b. alms. for each weight  
for pressing of nuts. Is not  
a constituent at first - as no  
vol. oil can be forced out like  
that of cloves, 2<sup>d</sup> certain  
menstrua take up vol oil.  
yet none in this case -  
it is produced in act of distillation  
or by chewing the kernels long  
enough in the mouth - emulsion  
& amygdaline acting on each other  
draws from the oil -

Cherates. gold yellow liquid - dried.  
{ sun-dried & kept - liquid clear. No  
low temp<sup>t</sup> dist<sup>n</sup>. useful -

$S_3$  turns it to fluid crimson  
color. Comp<sup>n</sup> =  $H_2C$  as an  
active principle. A small  
gout test in  $H_2O$  in red.  
spirit or shake with water  
fills - & test this.

Contains also Hydrocarbons of benzole  
= clear lipid = essential oil - <sup>is not</sup>  
found at all any more  
than oil of cloves &c -  
than oil. A chyd  $H_2O$  &  
benzene to something else.

Vol. oil of b. a. deadly  
poison. Sir R. J. Brodie -  
touched tongue with minute  
quantity & suddenly so much  
as to fall - 17 m. has  
killed - even 40-50 lbs. have  
not killed under certain  
special circumstances - as  
loaded stomach & vomiting  
used for emulging &c



papers & rolls and used  
for flooring partly &c. Thus  
accidents arise. Also paper  
oil & alum - & in Laundry  
beings - Same symptom  
treatment as with HCl - B. U.

9 Bil of bits as, not unattended  
with Dage - Some idiosyncrasies  
won't stand it -

Not pumped in med. if used  
in 1/2 drop -

Take 20th part of a pound of  
Cherry Laurel <sup>Prunella</sup> same active  
principle. Description of the  
plant - leaves, flowers, fruit.

Leaves and bark only  
distilled give 3 percent of the  
oil. Eucalyptin & amygdalin  
Also <sup>clary</sup> Laurel water. <sup>40 to 50% acid</sup>

Distillation - Colours, &c. 2  
and in Europe 1/2 to 2 dr. dose  
as a mild sedative - Same  
uses as HCl -

Thursday Dec<sup>r</sup> 8<sup>th</sup> 1845

Leading diffuses in form  
of album formis.

With Hg more rapid

— Opium no synops till 15 or 30  
minutes.

Course of Hg at once with Opium  
slow, finally almost appropete

3<sup>d</sup> Eyes have dilated. Pupils  
with Hg. Opium contracted.

4<sup>th</sup> — More rapid treatment &  
certain — death from 5 to 7 hours  
with Op. 12 hrs.

5<sup>th</sup> — Leading symptoms no time

Op. Intrusions of imprint.

6<sup>th</sup> — Op. kept slow & the relief  
set well — not of Op.

7<sup>th</sup> — Breaths of Hg with pulse. Op. distinct

Opium acid

(1) Lact. acid as a nat. cond.  
in a few cases — proper Opium Op.



7895  
with breeze in paper, underneath  
By chalk, cell, on stand as a  
solid base of lime & brack of  
this part in soil & soil.  
Boil Cream tart. with chalk. ~~but~~  
add to Solu. cell. a faint residue  
of wh. color. Then filter & wash  
dried & dried in  $SO_2$  & Solu. of tart. acid  
runs - Deco. = Cream tart.  
, extra also tart acid. When dried  
off. of the lime - tart. of lime. By abstr.  
of excess of tart. acid. of acid have  
2 - ~~...~~ - The tart. of lime  
of  $SO_2$  from Plant of Paris & leaves  
the tart. acid in soil

Chloro by chlor. oxyg. double  
Solym. chlor. - glassy looking air - fr.  
sour to taste - all char. of acid - ~~...~~  
with lime & is sol. in H<sub>2</sub>O. will  
app. slipping apt. by heat in  
open vessel comes to top of it H<sub>2</sub>O &  
part acid. Still further exp. at 2 1/4 = 1/2 in all

tartaric acid with only  $\frac{1}{2}$  sat.  
writing powder of oxal acid.  
Pyro s. acid.

Salts Whiff. with lime and  
Ba.

With KO in excess wh. eqt. ~~of~~  
of tart. acid.

Pt. Cl wh. ppt.

AgNO<sub>3</sub> - wh. ppt.

Uses. In medicine. Removes heat

stimul. in. increased flow of  
urine. May give colic & flatulency  
& diarrhoea. Poison as an  
irrit. if too much. Used as  
lit. acid. Also in form of  
soda & bicarb. of do. in cattle  
also Rochell's salt.

1 scruple of calc. wh. 27 of  
bi carb. KO. & 22 of carb.  
& sum of K<sub>2</sub>O

K<sub>2</sub>O suited for comb. with citric  
acid. & Sacchar. tartaric.



# Citric Acid

Acid of lemon. Discovered by Scheele who  
lost life by HCl. Discovered in 18-

It is tart acid but eyes are  
showing peris - like druid.  
as heat - as buffy angle road  
Veg sol. in water. with sugar  
= lemon juice -

Exp & had pin off water & ground  
Carbonic acid & acid & acetone &  
leaves pyro-citric acid. of a  
detonate O<sub>2</sub> & clear found much  
= hydroperoxide - & fruits in  
oil is digested =

- Tests - 1. Alkali ppt. white lime.  
2. Nit. AgO Mg. wh. ppt. heated exp. H<sub>2</sub>O.  
3. Not ppt. with K<sub>2</sub>Cr<sub>2</sub>O<sub>7</sub> but with Ba.

Acid with tart. acid - makes salts &  
tine. Sulphates detour of Ball.  
Cit. acid purp. fine lines on fine  
lemons of squig & upid water cast  
& ferment complete in 2 days.

San off clear liquor & clarify of  
pellucid & soft. of lime  
& powder as with tart acid.

Actions similar to tart.  
belts & when long used - does  
not lessen heat so quickly as  
tart. Fine drink. 2 Dr. 1/2.  
in 1 qt. <sup>tart</sup> water & add sugar.

Effing water, 12 gr. oil  
and nut 20 gr. bic at 100  
& 20 of tart. No = same  
of bic soda & ss. 15 of  
magnesia.

Same juice of lemon =

Lemon = - of 75 - (see book)

Description of lemon. Fruit is only part  
of plant used - 9 cells, 4 seeds in  
each. Perycarpium.

2 parts = juice = same

• 22 part -

Juice not of perfume of cut  
fruit. & strong product - water



Flourent-Desot. 1, 4 p.c. citri aind.  
or more, also super citra of No.  
In sud, as a sedative & spasm  
for sensory. & if sufficient  
prevent it & if already affund. via  
the suitable art. cure. Staff  
must carry it.

Cures ante rhum 1/8 to 2/3 cup  
2 to 4 hours - Evidences false.

The super citra supposed to be the  
active principle. & if so then the  
alk. treat. Not useful in young  
strong people. No use in dysentery etc.  
If no relief after 26 hours abandon  
for dysentery in tropical climates.  
acts as a sedative. Useful in influenza  
febrile affec. As an extant affec-  
for skin diseases.

Syrup of lemon pul & cit aind &  
-ya-

Cortex Lemons = Lemon pul - Dye-  
Vol. oil in the yellow layer - Luteo  
the same the pulp.





Set for the auto and.

Glucose made for auto of  $\text{SO}_2$  &  $\text{SO}_3$ . Heat for long time. first  
found them liquid - dry & heat  
again the product & found very  
of salt 20g of  $\text{SO}_2$  &  $\text{SO}_3$  - Distillation  
till loss of product from 6 min.  
 $\text{SO}_2$  starts & in air and trace of pure  
of the  $\text{SO}_3$  - no bluing.

Chars 2 sets (1) liquid (2) solid.

1 dm neutralizes 87 soda. Clean  
for dry some vapor, take small.

Dil. with water as change. 85% of  
from air at 1.065. by adding water  
it's of paper. in mind till a max dry  
is attained & then it decurs. up to  
1.073 = max.

(2) in plate several of perg aspect.  
Kup at 20: if at 20° some solid  
starts not being seen.

Tests for and they & also for es  
compd with base.  $\text{SO}_2$  in fine grain  
small. (Common with water auto char.)

Monday, Dec<sup>r</sup> 13<sup>th</sup> 1875

Actions of Carb. air. Greatly an  
irritant, redness of skin - not  
princip<sup>l</sup> - softens part - Dries  
p<sup>o</sup> - pupils as fibrils, allures  
n. & to good agts for lessing  
cysts. - Caustic - Intently a  
a violent pain. An indur  
one swelled a tooth-ache  
m-m of without. Eff<sup>t</sup> a vout  
pain in Remedy - Liquid  
Ardur & 2<sup>d</sup> to neutralize  
{ was or no alk. milk?  
Albumen n.

In med. as cath. agt.  
oblate cores. Use a stick  
with a sponge at end  
dip & apply for 2 minis.  
anti rug pain. white  
surface. as 1, 2, 3 apply  
of using - <sup>for</sup> for scoria



but pt. must not have  
excessive amt of spirit's use.

Durham's oint.

Radical cure of tumors. Draw  
thru this foot soaked in  
sub. acid. For warts & excoriation  
which may be above. Join  
off top & apply - also for corns.

Chloro mix. of acetic acid

1/2 & 1/2 - 16 m. c. & 16 m. ac. in

1/2 of pepper & 1/3

of oil & 15 of water -

2 1/2 drs of weak acetic acid (Diluted)

or simply acetic acid & a  
lot of hydrochloric acid. but

to use hard wood. prepared  
in a lye barrel. A diluted

3 Cloves of pepper pour  
over 1 pour 2 tary, 3 acid  
liquor. 3 pour CO, CH & Ctt  
reunited at side & burnt

For runs behind & on shell.  
- oil of tart & pitch = English Application

The first product that comes  
over - wood naphtha or  
pyroxylin spirit. 1000  
was used for calender.

This is kept for distill-  
that with common water  
acetic acid solution is added  
to saturation - an acetate  
of lime found which is mixed  
with  $\text{NaO} \cdot \text{SO}_2$  & double  
decomposition takes place -  $\text{SO}_2$   
 $\text{SO}_2$  distill & distill water  
anti acid comes over  
Properties. Contains 28% e.  
a.a. 1.044 sp. gr.

1000 salubly 31.3 measures of soda.  
No water in residue. Vigor  
fumes. Sharp & pungent  
taste. Rept. to give an escape  
on applying. Sider  $\text{H}_2\text{SO}_4$   
that spirit impure & distill  
&  $\text{NO}_2$ . Comments to pt.



of metal solid - put in silver  
plate if not covered with  $\text{Ag}_2\text{O}$  - if  
covered =  $\text{Ag}_2\text{O}$ .

22 }  $\text{K}_2\text{O}$  &  $\text{ZnO}$  -  $\text{K}_2\text{O}$   $\text{N}_2\text{O}_5$  &  
fully seen. Discoloration of  
and  $\text{ZnO}$ .  $\text{S}_2$  detected & state  $\text{K}_2\text{O}$ .

Use in med same  
as in  $\text{K}_2\text{O}$  - also for  
reducing  $\text{Ag}$  &  $\text{Pt}$  -  
Weaker a.a.

1 an a & 7 water - odor &  
taste unless strong. 13 sat.

31.3 - <sup>Soda</sup> aff. 1006 -  $\text{K}_2\text{O}$  -  
a.a. & honey -  $\text{ZnO}$ .

Mercur

<sup>Kuani</sup> Return. 1490 year before Christ  
era. Finitation -

Mercur  $\text{Hg}$  &  $\text{S}$  -  
mixture. 22 heat = 70 & 80  $^\circ\text{C}$ .

30. mixture of  $\text{Hg}$  &  $\text{S}$  - 4  $^\circ$

Full exposure to atmosphere. In  
Chang's &  $\text{Hg}$  oxidized &  
atmosphere  $\text{Hg}_2\text{O}$  &  $\text{HgO}$ .

Diff. water above & a. a.  
fermentation.

White sugar = gallicium or  
Trunk sugar. Red or white  
one. Not common.

Place liquid in a large tub  
roughly heated to 86 & 78. 2  
holes in walls to allow air. In  
for 10 days kept. more  
turbid & sour - aged 57.

V. is impure. acetic ether,  
sucrose - salts. bi-tart. keto.  
of  $K_2O, SO_2$ . Also tampered  
with. 1/1000 of  $SO_2$  is allowed  
by law. It keeps better.

Clear stuff. Yield. dark wort.  
Red  $SO_2$  from air. or of Ba Cl.

German Sugar - made  
in 36 to 48 hours. Prepared  
with tub. with tiny or collander.

Apple but found of 1000  
of cows & 8. In preparation.



plus such stages & add  
acetal water. & // work of ferment  
Sugar is draw off. it may  
be pour 2 or 3 times on same  
grain.

Malt or British mizer - malt  
barley - a few days & then  
put into a ferment tub & allow  
to ferment, requires time in appt  
hours & slow. 2 times - on 3/4  
full & allow to go on to another.

at bottom grapes placed.  
Sigs. style. Nos. 18, 20, 24, &c.  
Diff. for Full is 10/12 & 22  
but malt mizer. 1000 5/10/12.

Malt mizer - amber mizer put  
to acetal. no water of air.

no no tartar. Alto to thick  
turbid ropes. & eluent pour

= it = a slippery pellat, also  
= 2 sigs acetal = mizer of yellow  
water mizer. on the way as a

Money cured = "wetter of eyes":

A woman in ill. & cold  
& great eyes. pain in eye  
nights in - Emetic pain -  
again. couple of weeks  
after - got well,  
Treated = vomit <sup>induced</sup> & sleep after -

In case of excess  
use toxication. Perira plus a  
course of a woman due to the eyes.

In small quantities as  
a condiment or seasoning of food -  
or Saffron and tracing of the eye.

Also <sup>off</sup> the dissolving out of calcares  
parties from eye: (2) in inflammation  
as erysipelas 1 v. to 3 or 4 water.  
To produce cure. Don't use old salt.  
To lessen temp. in fever & scintillation.

In those cases to cure of eyes  
I would advise with 1 v. 1 can't  
Colony & 2 water - even in mix.  
Use for some time. Vapor of r. for some  
third of the eye. Vapor of r. in small  
of put in that metal - Bone & skull.



auth

Actaeo Spasmodica

Inimittit regular rigid with  
no cessation.

Castorium from Castor fish or beaver  
Is found in sac. under integ<sup>s</sup>  
abdomen. It anal said as  
bark. find it over fishes.

See per scope. 3 parts. comd  
{ 3 parts (1/2 cellulose & 1/2  
(2) varicose & (3) muscular thin  
one entire sac may be useful  
in supplying cont = Some comb  
outside it sits inside. by it  
yellow <sup>comd with oil of the same</sup> - ~~from this~~ the castorium  
is created. (1) Russian (2) American.

(1) 32 times the price of the American.  
Adults <sup>eg. with its acid</sup> shall 2 vains cretans &  
Resin. Prob. alt. Ho. & contract  
H. and. C. is hard brittle. Resin  
kind does not offer with ins. Purple  
starts & ether. The oil does an also  
said, but are <sup>of the same</sup> form. When fresh  
are round <sup>of the same</sup> the oil does an pease  
have the teeth attached. Castorium.

Tuesday Dec: 14<sup>th</sup> - 1875  
Nus of *Centoria* - Anti-Spasm  
in hysteris. Chetiz legter.  
In nervous pain, palpitate fl.  
menstrua. In nervous &  
shooting cough. Usually as  
tinctur prof. 1 to 3 Jss.  
Moxus = Musk -

Derivd from a small deer  
of Tibet. Plac on back &  
find a small opening near  
pubis. trad to a sac.  
from it a conal twisted  
sac. 12 to 2 lines.

Lenis - 1<sup>st</sup> hairy coat, rounded  
orbicular & semi cotular form.  
in center is a little nipple  
& at its bottom. hair angled  
circumg & of silky color.  
with coat = 2<sup>d</sup> conig - mucous  
& atrata in. apper & defibris  
in annis distinct. with the



muscle that runs to side. 3<sup>d</sup> =  
fibrous coat = wh. fibres. under surface of  
this marked out by pits - it is within  
them the blood vessels run - then  
fibrous coat is taken off a 4<sup>th</sup> in  
size = pearly coat - closely applied  
to pits - next is epidermic coat.  
iridescent, metallic, covered  
with scales or epithelia - small  
folded like parenchyma - 6<sup>th</sup>  
Glandular coat - vesicular  
gland - when secreted to make  
yellow liquid - thickens with age  
like new pipe - brown. 1 1/2  
lbs. of it. sac - pod - 2 kind  
(1) Chinese & (2) Russian. 1 is  
hard & not spongy - dried  
in hot brass lined with lead  
& this with paper 5 in above  
each wrapped in <sup>wt.</sup> paper with  
name of collector written - "Some  
be Chung Chung ge kiu".

2 Russian in brass not lined  
pods on semi-stemmed. Scales  
& hair longer & stiffer. Contacts  
with the (P)nom better not so  
odorous. Odor peculiar,  
from other sources as in  
Grodium moscatum  
is in sure of much  
or - Salicylic acid of  
crochodite. Cause of odor  
uncertain. Supp'd vol. al.  
but none obtained - <sup>supp'd</sup> Airt. memory  
& if food be weak of Kupis  
or. <sup>supp'd</sup> sup' again of air.  
Certain <sup>note</sup> perfume interrupted skin  
Musk - warm bitter taste  
persistent odor.

Sporious article made of  
taking part of hide & lining  
then sewing thread. Absent  
rifus. such & inside  
argent - Very expensive



with blood.

adulterated. Examine by  
incinerating in. If pure little  
it ash. Shows red resin.

2<sup>d</sup> rub up with water &  
if blood find corpuscles. This  
finding seen & figt. cells.

Analysis - Iron  
sulph. & 2 resin &  
vegetative substances.

Action.

Internally narcotic almost  
opijastic - Iron absorbed  
heart frequent, heat of  
corpuscle - thirst - diminishes  
acids at first - stimulates  
lyso & odor of mouth, of kidneys.

Headache, vertigo, dimness, &  
nausea in large quantities.  
In Deco to empty vessels.

5 to 10 gr. at bed time for  
slumberlessness. In corea  
epileptic, hysterics. Fruit of Strawberry,  
2 to 10 per or a tea full.

# Valerian

Introd { <sup>2 kind</sup> Fam: Valerian -  
Port used - Cultivated - wild - Nat.  
has most strength. From large  
roots, roots to be used. Ado.  
sui generis - attracts to cats  
& rats. In proof of this it  
acts purple = Valerianic acid.  
also from species of Citronum  
& by decays of acid & veg.  
substances. Like fatty acids  
Break up root & distill  
strong soda - the result is  
S<sub>2</sub> = a acid. syn.  
colorless strong odor of stinky.  
fit the fruit sol in or water.  
Boil at 270°. acts vapor:  
3.5. Valerianic acid of oil  
= valerol = new hay - Vol.  
oil also formed by acting  
this acid on = a complex  
material - but of acid & valerol -  
also resin & a little trich.



Salts of 2 kinds. 1 a green color  
with KCl & a yellow with  
antit. of lead. <sup>Active</sup> Val. root is a  
stimulant. Great circulation,  
An anti-spasmodic. =  
nausea, headache &  
Used in hysteria. Best in  
Am. tincture - tinct. & dr. when  
resp. in water. Headache &  
nerous depress in febrile states.  
Le Corea. Dr. H. J. Butler  
recommends it for rheumatism  
as a cath. Is valuable for  
symptoms of pain in back  
fulg. h'd cloth. Dry hys. &c.  
In pneumonia of fever.

Prep<sup>n</sup>

$\frac{1}{2}$  &  $\frac{1}{3}$  of inf<sup>n</sup> for some  
Lutea 10 drs - to make alk.

Pr<sup>n</sup>. Am. tinct. 50  $\frac{1}{2}$  & 2 drs.

Prods not so active if kept  
aparts & much will be resp.  $\frac{1}{2}$  dr.  
So much must liquid matter

Is the best expectorant in the  
kit now -

Creosote = Valeriate of Soda  
} distill<sup>n</sup> in glass retort.

Put Valeroid  $\text{S}_2$  acid & bichromate of  $\text{K}_2$

It is cup-like in color white -  
not as medic but for it are  
found those that are.

Valeriate of Zinc } double dosage  
for 1/2 of soda & sulphur of zinc.

depts } & for } decantation -

Crystals present in <sup>bits</sup> paper & powder.

In fine amine crystals or about  
1 in 100 of each water & as of alk

Metallin. Organic cont. No odor

Reacted } tartaric acid,  $\text{SO}_2$ .

shows the base & fit in odor  
of the acid white tartaric or Valerian.

= a good antispasmodic.

Done 1/2 to 3 or 4 gr. in pill with  
belladonna & hyoscyamus - extant.



Valeriate of iron also of double  
acetic & of soda & Val. of soda.  
from iron sulph. & the Val. of iron.

Offic. small. dose 1 to 4 grs.  
Lopped w. combine properties of  
the Val. & iron - to be used for  
chronic rheumatism.

Certain of iron flavored with oil of  
sage, sold for it, known &  
sol. in water

Valeriate of Ammonia. Val.  
of soda & Sulph. of Ammonia.  
mix the above & let stand  
& double except ensure  
Val. of Am. 2 forms. plates &  
middle. oil in such water,  
bitter or Ammonia into it. 1/2  
& 3 grs. dose. for many affec-  
tions for ague.

### Aspic acid

Tree a native of Persia - called  
"pungich" in Persia.

Obtained for root - size of arm  
& thick. ~~Low~~ broken on sides.  
dark bark. Juice is  
from middle of April to ~~the middle~~  
of July. People who collect in  
for fruit with full an ~~slud~~  
2 buckets <sup>2 cups</sup> ~~to~~ <sup>dr.</sup>

Run root come it with  
of less n ~~put~~ - ~~with~~ again  
juice com out. ~~trapped~~ & ~~cup~~  
when full. to bucket. & ~~time~~  
on same root - at interval of days.

Crows in masses of yellow  
color; <sup>gum resin</sup> of for wh. ~~clays~~ or ~~eye~~  
low red or pink blossom color.  
falls again to dull yellow brown.  
It. sud. h. encircled. ~~Leaf~~ -

odor peculiar - bitter acid  
frugal taste. Officin at fruit  
but ~~with~~ it  $\frac{1}{2}$   $\frac{1}{2}$  - ~~Acetous~~ ~~fluid~~  
of it. used for ~~stomach~~ ~~ac.~~ in  
cooking. ~~with~~ it ~~over~~ - 2 varieties.  
~~the~~ ~~leaf~~ (herb) ~~large~~ size of ~~fruit~~ ~~plant~~.



Wednesday, Dec: 15<sup>th</sup> 1845.

Describe of laryngous respiration.

In 22 tent or ~~laryngous~~ of attitude  
of "tens" own sides color, brown  
yellow or. but = away out in  
one reddish part.

Kept. get hand. lost temp. white. & 2

(1) vol. oil. thin. float in water. specific  
small, 2 oils. (2) Rellin. 2 kind (1)  
more. to all & ether (2) red if one  
is ether. (1) yellow odor, taste  
sol. in alk. saline @ r. Sol. =

greenish brown color. Aronatti small  
alluvians coat.

Actions. 5 to 10 gr. dose. causes  
at epistaxis. thin skin of fingers.

Adials swell & of to stage.

also of breath. Kidney also. Lungs  
pale. blood surface. In eyes

does. palpitation, hurried breathing  
headache, nausea or - like contomus  
Kills round worms. In females

influenza acuta & chronica.

Rhiz. as stimulant. in 3<sup>d</sup>  
order of topics & see p. 100. Dr. Stur  
4<sup>th</sup> part of Analogy of the Gill  
and Dr. Tustin of asphyxia.

For internal use. per rectum  
better than mouth. but in  
large veins. In cases of  
stomach. Disposition with  
suppurative. Spasmodic aff.  
as Int. Contin. Valerian & asphyxia

In spasmodic asthma. In  
Laryngismus stridulus. As plaster  
fracture in cough.

Preparation Take 20 gr. asph. <sup>round</sup>  
rub with water. for asthma &  
wounds of rectum.

Emulsion of as. 2 oz. as. & 1 pt  
proof spirit. Well made is  
transparent yellow brown - fades  
keeping. It onto milky emul<sup>n</sup>  
with resin. Dose 1/2 to 1/4 dr.  
Compound tinct. as. = myrror &c.



don't go to - Other comp<sup>d</sup> of as. than  
made. For drift of bowls.

Galvium - Umbelliferous plant  
cut stem & fr. made above root  
milky fluid flows out. 2 vari<sup>ts</sup>

(1) compuncta var. apurosa.

(1) size of pear - layer upper surface  
sacchar - viscid pearls coped on  
fr. but 3 of wt. (2) inferior. in  
in. pins = fragments stuck by juice.  
Adrethate. of miltio & strind much  
superior for rid of.

Properties. Heat & oil. Cont. of them  
heat & pungent Rhu as. allivans  
tanti. By spirit & water extract

Plant of heat. Anther. Vol. oil =  
oil galvium. & colors - blue, trip<sup>ts</sup> - white.

(2) yellow & opaque. Sapp<sup>d</sup> & the etc. all. & m.

Rain extract of the root & stem bark.

Action like aristida. More  
powerful in uterine "uterine resin".

The surface: equal curls into. Deligent

Ulex Alia Ulex of asifalica -  
The Ulex & Ulex Ulex Ulex is  
erect. - Ulex Ulex Ulex.  
Internally 50 to 100 grs. Galium Ulex -  
"Cucuphora"

Known to Ulex Ulex & Ulex -  
Med. Ulex (Latin) Ulex

(1) Ulex & (2) Ulex Ulex  
= Ulex Ulex & Ulex.

Also in Ulex Ulex - in Ulex  
oil. Artificially Ulex Ulex  
the Ulex -

Official Ulex - Ulex Ulex  
branches & cutting or Ulex  
from hot water & boil Ulex

Also from Ulex Ulex & Ulex  
& Ulex in trade (1) Ulex C.

& (2) Ulex - Made same  
way. Ulex, Ulex Ulex to Ulex Ulex.  
Boil till cold at top of Ulex. <sup>Japanese</sup>

Collect Ulex & Ulex - Ulex  
Cin Ulex with Ulex. heat  
C. vapor condenses as Ulex



Amies - introduce stick & if want  
pour - Cool liquid & crant in  
broken up. Dondin copper crant -  
C. clays mixed with clay - both = crant  
C. Japanese = small pinkish grs.  
In wooden cups. Cliner - Layer-  
benk color. fine clay of pure...  
Copper dove. GFD in cases lined  
with lead. Rapid camphor. Put in  
London. "Bombola" = a large glass  
cylinder. hole in upper surface. Lime  
added - heat to under surface for  
2 days. C. produced rises to  
upper edge of glass. pour on  
hot water. 12 in & -  
Shape hemispherical or ring.  
like masses - or in convex mass  
Lentle cooling. then warm & fragmental  
But like rosemary & Val. some  
cryst. of crystalline on one side of stage.  
Very indist. in the top. 60°. Rising - not apt  
to gain in water. & all records  
fitted -

By a fine  $\frac{1}{2}$  in water extract  
 of curat in comp<sup>o</sup>. Spin  
 round on water. Paper of C.  
 removed not time. 2 pounds -  
 liquid. Mass of Camphor oil, acid.  
 Chem. nature - counts vol. oil.  
 or comp<sup>o</sup> of base camphor<sup>o</sup>  $\frac{1}{4}$   $\frac{1}{10}$   
 $C = C \frac{10}{16} \frac{1}{16} O_1 -$

Actions - Opium like in poisoning  
 after. <sup>orally</sup> Seeds destroyed. Veg. wound with

& if frog be put into jar with C. hem  
 anem. pale, labrad & Do. 1 to 3 gr  
 as yet. 500 as an

In small doses = a stimulant to  
 nervous system. Especially also  
 as an irritant. = diarrhea, expect  
 as a diaphoretic. Keep for warm  
<sup>or</sup> drinks - In large doses de-  
 Is also narcotic, antispasmodic &

Actions in large doses. 4 to 5 grains. inter. <sup>or</sup> cleared.  
 Less will also produce convuls - 16 gr. poisoning  
 Red cheeks. dilated pupils. Delirium. Contract  
 Chert. nausea or vomiting. Treatment. Plenty  
 of water. Act. Opium - Vomiting & then  
 Stimulant herbs. C. for fever in exanthema.  
 For inflammation of head etc. means: purgative  
 hysteria - teeth. neuralgia. <sup>or</sup> Pains in muscles  
 Nerve of os. Exll as sp. C. for dist. excretion.



Thursday Dec 16<sup>th</sup> - 1875 -

Campor juniv. as powder - 1 gr to 5 or 10  
avoid benefit required. <sup>stim or nausea</sup> not safe  
to give max. amt. ab. fresh. Med.  
bills 25 & 5 grs. In form of pill  
with Opium for diarr. 2 grs capsul  
1/2 pr Opium with some hyogyan.

Regula for Phoscepin.  
(1) ~~Campor juniv.~~ <sup>Regula for Phoscepin.</sup>  
1/2 dr fine Campor & 1 pint water  
C. in bag of muslin - in jar  
with lid. In 2 stand together  
2 days - weak.  $\frac{1}{32}$  water. Get  
out <sup>the</sup> solids in water so you  
see ft. pts. w/ 1/2 grain at a dose.

(2) Spirit of Campher  
1 C. & 5 ret. spl. 2 stand cont  
time. also in. Does 10 in 6  
1 fl. dr. for Diarrhea & bowel  
comp. as colera. if eug emp  
clerk it. 5 - m. w/ 5 minutes.  
even 20 m. w/ 5 or 10 mi. ft.  
in bed in blankets. Drop on fine  
powder at. eye - as if in the eye.

Also for nervous depl<sup>d</sup> sore -  
lyptus - 10 m. ore -

Also for chapped hands -

u for skin d<sup>is</sup> as Xemin  
spas of. comp. + 1 ore with  
of lead prod. usual for sp<sup>is</sup>  
bruis -

For discolors ecumosis -

Compd. tinctum of E & Spir.  
= paraffin.

of - bergu and. C. oil  
of - anced purif apt. & Ho  
Lupul. tabery color. good  
form for sing complex -  
Dose 20 m of 1/2 dram. for  
sing complex - b. creants.  
influenca - with squills  
ant. ma. &c.

Lincimut C. & Olive oil.

Feils in - of surface in  
Chon. rhuticim part &c.  
Anto Lincimut -



C., spts of rosmery - of Ait.  
& oil of lavender. good lotion

Chloroform & oz equal parts.

Mercurial liniment = blue oint.

C. Ait. & Laud. Lax

by the same blue oint. for

Chloroform inferior 2 parts -

Simone's "Sawto Dressing"

Mode of app<sup>n</sup> described

7 Soap Liniment C. Soap. Spts.

of rosmery, or. As a ruble

for more active liniments - for

8 = 2 dr. tinct. iod. & dr. opium.

9 = for blisters

10 Scum & turpentine & C. & Ait. (main)

For use in br. & quincy.

### Borneo Camphor.

B. & Sumatra - Same. tree 5 to 6

ft. diam. of trunk. <sup>leaves to</sup> flowers white & 4 or 5

yr old. <sup>leaves</sup> Pinus as tree uses.

Cut down tree & split - P. in solid

cells in interior - also in branches.

More Expensive than Laurel Oil  
Not in market. Chinese try it all  
sub in water, alluam odor  
being powder without dropping  
in spirit. Does not absorb HCl  
& form lign like Laurel O.  
Uses like cast.

Cerebro-Spinal Remedies  
ie. to sp. in the cortex =  
Narcotics ie. amuriz infl.  
" are class of 2 sp. (11)  
stimulant & sedative.

(2) ~~to~~ = not a record for (1) but  
depends on drug itself. proof  
= dose with result. small dose  
st. logan kept up. If very large  
to shock st. & great prostration  
killed and to effect. Anodyne  
= relief pain - Soporifics  
<sup>3</sup> Calmatives & Anesthetics.

Opium

old medicine diff. appellations  
Pains relieved - 2. Therms



Homer do & - Vaini Catw & Quintilian  
names in praise of it - Color.  
"White & <sup>3</sup>th - 1 plain of Hindustan  
2 on mts of 90 - is more attractive  
Greeks & Romans from Arabians & <sup>4</sup>th  
Papaveracea. <sup>Liby</sup> Com poppy of fields.  
Known by its flower. In wet state  
dull white or red with deep violet stain  
at base - Root of flower = capsule or  
poppy head - 2 in. deep. fl<sup>r</sup> =  
Stigma at top & peduncle at bottom  
Dipis for escape of seeds 3000 minute  
round seeds - yield fixed oil. used in  
Persia Egypt &c. Does not dry &  
is used by unclean natives - for food -  
Open for from unripe  
capsule = anorectic emetic of emex.  
In Smyrna got as for 1800 years  
(Diff. style in India & Asia.)  
Depth 1<sup>st</sup> Scap. in evening. Care in  
cutting not to drink quite thro'.  
only green ones cut. Next morning  
found that the brown substance of opium

2 pro. to each head but = 60 lbs to  
 acre. In 1 year 33,000 imported to  
 Britain, <sup>mostly</sup> for home use - Some  
 off by travel = "sectua" - place  
 contents into same. spiders =  
 1/2 of all. Same to number of  
 culture. In said out of sun light.  
 Same plant - Land - for 6 weeks  
 + then 8 weeks - exam. if  
 infar. complicated - not in light.  
 adults with soft sand, cloudy  
 or. With liquid, <sup>as silicea</sup> - In England etc.

Varieties

1<sup>st</sup> Turkey in Empire, 2 sorts Naupia  
 (2) imperial. 1 in cakes & cond with  
 1/2 oz. each - Honey mass - hard  
 laminated aspect. (2) 0 also 4 lb =  
 also 4 & 8 oz - Cond with poppy  
 also ruber leaf - also 9 dark  
 & hard. Also price

Naupia sp. Turkey in Asia -  
 in balls 1/2 lb to 3 lbs. each also  
 cond with leaf = polyhull



sided or to pressure. Soft, tough. by  
heat loses 1/2 wgt. light br. color  
throughout. Smell & taste of opium.  
Dry = scales -

Egyptian Op. like Cassia pa-  
in drac. wgt 4 to 8 oz also.  
Cand with poppy leaf. Otherwise  
diff: pink in color. hard dry.  
in vapor both loose only 1/15 wgt.  
little foreign matter but poppy seeds.

Persean. peculiar. sticks size  
of little finger 5 to 6 in. large round.  
yubi proper & large. always soft.  
granular texture. Suffer to be mixed  
with oil - poor var. Platinum  
Banarus  
Allogwan

Indian - 3 groups. Names - 1st  
2 dynes garden - in wooden boxes  
lined with cloth lead wax. Guinea.  
4 oz - 4 in sq & 1 in thick. head & dark  
brown - put rate quantity. (2) = inf. Platinum  
& Banarus = 3 lb. balls.  
Allogwan 2 kinds also. cand of broken  
poppy heads - dark in color. Lead &  
swell like sugar - 10 of water -  
or quality and consistency malleable  
extreme. Smoky odor - not by the smell of

European - Euphr. situ abies  
Fuchs - lib. eastern Spain.

All have same smell  
bite taste, color, flav. Clays color  
by exp. more fulur. insol in  
water. Burns. by heat ch. of  
low 175 to 200 p.c.

gray ppt: with pb as.

2d with with  $\text{NO}_3$  -

the Cl. Chy red color.

with stents blue of y -

---

Tuesday Dec. 21<sup>st</sup> 1875.  
On Alkaloid of Opium - <sup>Alkaloid last day.</sup> them

Morpheus italy. abomorpheus = in ppt. exp.

Hydrochloride of morpheus. preparation.

Forms. uses. Another alkaloid like in

remarkable crystals. Papapannin

discovered in 1848. Chy of it salt.

Today Perronopline or Salvia

same comp<sup>n</sup> as in. solid - dissolvable

chry taste. causing ppt of Alkali.



In crystals - 4 sides - very shining or argentine  
plate. How red with  $S_2$ . Operates especially  
on a special cord - sp. constant. Sp. seen  
in eye does - 1 gr. in purple vein  
of an animal - effects like Ammonia.

Another set of Calaba bean  
line - Of all 6 forging see in:  
most might value of sp. diff. on  
anal. of this. Sp. c. m. for Snyrna  
but only 4 p.c. for the Constantinople.  
Gyrum Elix. This see various for 4 p.c.  
7 58. Worst = Russian only 1 p.c. Proper  
in Snyrna sometimes up to 73 p.c. even 17 p.c.  
usually 1 gr. of m. = 480 gr. sp. but  
exceptions - depend on quality of spin.  
as 1 gr. of Persian nit. = 5 Snyrna. Lake  
ex. as Dover Powder with 1 gr. sp. not  $\frac{1}{2}$  gr.  
m. m. Av. of 5 p.c. of m. in p. was only  
 $\frac{1}{20}$  of 1 gr. unless up to 20 p.c. then =  $\frac{1}{4}$  gr.  
Also the kind of salt as Sulphate = 84. -  
p.c. A Cl. of m. = 84 p.c. diff. kind not  
m. appears m. Am. relied upon. Lake physical  
class. of samples - no return. no standard  
salt.

3 drugs of the class

ing.

(1) Narcotine rather a-marcotine.

Red from  $\text{Op.}$  &  $\text{Sb}_2\text{O}_3$  ether. So called  
sol. & very in water & valuable  
remedy for intermittent fever = a  
quinine. safe. not toxic property.  
used 2 drs. with opium.  
Dose 2 to 5 grs. It. called as preparation  
to be a mixture with opium. But for  
some days before -  $\frac{1}{2}$  gr. 3 or  
4 times a day. &  $\frac{1}{2}$  has been used  
alone & for opium take 5 grs.  
Leads to  $\text{Sb}_2\text{O}_3$  &  $\text{K}_2\text{O}$ ,  $\text{NO}_2$  blood red  
tint. & so used but for  $\text{Sb}_2\text{O}_3$ . It  
is not plain in its = a drug since  
has color.

(2) Narcine - neutral salt. crystals.

soft flaccid appearance = a soporific  
when refreshing sleep. Known for  
effects of any kind. and = here  
sol. in water. Only used in its  
elementary form same



(3) Meconium - not important.

Meconic acid.

In Opium - Effers with reagents = a solid. in small plates like mica  
Amk. color - heat counts for 3. brass  
5 2, & even to 2 brass - find in  
acid. FeCl = heat test & then is  
but for tests for opium - Cherry  
red sol = Against any nitrogen - dried  
but other substance same = FeCl  
Present at any rate in saliv. & other  
secretions so do not alone prove it. Extract  
Analyses. Red of other things red of sol.  
of FeCl. Libermann wood & info of  
wt. increased acid. Acetic acid &  
antate & fluid of desiccating room all  
same - yet interesting. Pereira &  
Wibben say not suff. In Herb. Christian  
says it is suff.  
Used against round worms.  
Purine, extractive matter, Catechu  
or. also in Opium. East. oil  
also suff. to exist.

Pseudomorphia - 6 grs. no efft.

Action of opium.

(1) Habituas smpt. (2) occasional.

(3) Opium eaten - Turks. Dr. Brown took op. before retiring - "Letty pin me mod. stimulus of 150 in. land" = a glass of whiskey" - Turks begin with a little. In opium the impossible. De Quinc 350 pills of per day - 100 - 1000 grains. It may limit it much. De Quinc reduces his to 1/20 & not suffer. No habit efft. as of op. Some cases of this - minutes = days etc. Crispation.

(4) Eating (2) Smoking = "Kangood" - at. smoke which passes per nostrils, eyes, & ears. Emascination follows. surface hairs fall out. Counten = leaden hue. Spine aches, pulse slow, see<sup>us</sup> closed. Appetite poor. bowels constip. Neuralgia pain betw. articls. Postm shorten life. Gt for cancer clud. rheumatism. not as bad -



(2) occasional emp. (a) unidirel (b) toxic -

(a) sp<sup>2</sup> on all its septa - on each  
of mil. = billion of eye, wit,  
pung. etc. thus off. state - sleep. and  
to do. Small dose, aneurysms, cirrhosis  
or even amputat. Acc<sup>ml</sup> of veins  
blood in sinues. ∴ sp. as aneur<sup>is</sup> is  
imper in septa of eye etc.  
Why not sp. for binding sleep or  
for tripping.

Sp<sup>2</sup> on circulation, ∴ left retards some  
strength. Cir<sup>2</sup> leucoid. bet<sup>2</sup> of the sp<sup>2</sup>  
in the capillary circ. ~~leucoid~~. & so of  
the function depend<sup>g</sup> on capillary circ<sup>2</sup>  
∴ sp<sup>2</sup> for pers<sup>2</sup> on of active matter  
for irritability & contraction, or unite  
as uarentia.

As resp<sup>2</sup> of sp<sup>2</sup> from the lungs of blood.  
sp<sup>2</sup> reacts blood dark color. Resear & keeps  
imper. nerves of eye cut off & to action  
of sp<sup>2</sup> July, on the tube of. lower part  
from the free surface. Always irritability  
of the nerve of the eye.

<sup>Insensibility</sup>  
i. very peculiar in form, <sup>cutaneous</sup>, <sup>insensibility</sup>  
ii. but not - Cutaneous signs of Br. were  
seen into tube & not able to  
erect up. In heavy case to diaphragm  
sensitive to cold. & clank opening of  
artery & subcutaneous eye -

Actio in dicitur. bristles & teeth.  
erects stout, lessens appetite. Div.  
g. p. fullness of liver. Stop rest of  
bile. Lessens sensibility of muscles.

Not on vein when alviny can  
suffer from symptoms already  
but is given to them from as  
peritonitis; & Div. pain of groin. like  
demon. Dye of the hot climate.  
On using opium sometimes become sensitive to  
increase it: and to his circumstances. Retention  
of urine & anti. of much of bladder,  
that tubed & deep. situated. bristles.  
Structure of paralyzing fibres of the  
nerves. i. the of insensibility in insensibility contracted  
& sensitive & in of the state of the (see page)

Actio on Genital system.  
Lye does on small paralyzing peritonitis  
for small veins strain on



By nursing mother, affl. to infant. Suffering  
nerves. Parturition - hemorrhage -  
for relief of no counts indicated -

On skin - corubri with epine auting  
on. perverted feeling in skin. In some  
much digitated present. melle rache follows.  
Kup ft. in bed. S. D. in fin in count  
pale - anodyne - Hypodermically always  
same by per atomals - more quick.  
In Dose quantities.

Preliminary symptoms - Lassitude. Sleepy - The  
same might follow hyperaemia - 2 steps  
(1) pupils, pupil & head of pin. pt. may be  
rived temporally. Pulse small, compressible.  
Breath tranquil. (2) Change - distended  
pupils - insensible to light. very heavy,  
full pulse on neck - cold ft. profuse  
inunctions. no reaction at all - Anisocoria  
are distinct (1) = peres of brain (2) = appropery.  
Soft ft. gentle anoxic count. ft. small. Humid  
pale - pain drops. Swoll. ejs per return.  
of irritability and signs

From internal sphincter. In  
to opening of all. 2 major currents  
2 kinds of tears. surface that  
other tears of eye. skin  
pupils close tightly. double  
pupils most aff. in the evening.





Also returned to school. From

various returns.

By our general water for

land & large returns.

Large water

return. In our water

return around some more.

to 2 1/2, 3 parts, return

return & return. 1 = part more

return of return. The return was

with a small return, the

return was fairly to return

of 2 1/2, 3 parts. When I was

the return = return from opposite

return = all manner.

to in. in return. The return of day

with returns. When I was

of this. The return from

but contrary. In our return

return. The return = in

return. The return = in

return. The return = in

return. The return = in

needed for an accident, to fill up:  
 - The 2<sup>nd</sup> & 3<sup>rd</sup> in case of trouble & loss:  
 1st 5. fund of opening to fill out -  
 of 207 for the 1st attempt - see the  
 for fully paid - in human city:  
 1st - in full out - fully paid -  
 the 51<sup>st</sup> from out 31<sup>st</sup> from down  
 pt. in 13 days from many complete.  
 Rate of interest for - only interest -  
 on part in cash & capital goods in fees.  
 1<sup>st</sup> from <sup>the</sup> this and numbers for free  
 over of interest like or payments  
 over 2<sup>nd</sup> of it.  
 Anticipate purchase - even more  
 than 1<sup>st</sup> of it. 2<sup>nd</sup> from opening of  
 from selling prices. All paid in  
 from 1<sup>st</sup> day, my other items - 2<sup>nd</sup> day  
 from 1<sup>st</sup> day, 2<sup>nd</sup> day of 2<sup>nd</sup> day & so  
 with the 2<sup>nd</sup> day of 2<sup>nd</sup> day. one &  
 more - out of interest, 2<sup>nd</sup> of it  
 and again in penetration want  
 of small interest.



The abdominal liver is <sup>to</sup> ~~the~~ <sup>the</sup> ~~liver~~ <sup>liver</sup>

& the stomach -

primary - ~~stomach~~ <sup>stomach</sup> - ~~and~~ <sup>and</sup> ~~stomach~~ <sup>stomach</sup>

of the ~~stomach~~ <sup>stomach</sup> - ~~stomach~~ <sup>stomach</sup>

with ~~the~~ <sup>the</sup> ~~stomach~~ <sup>stomach</sup> - ~~stomach~~ <sup>stomach</sup>

stomach ~~is~~ <sup>is</sup> ~~in~~ <sup>in</sup> ~~the~~ <sup>the</sup> ~~stomach~~ <sup>stomach</sup>

file

then as a ~~stomach~~ <sup>stomach</sup> - ~~stomach~~ <sup>stomach</sup>

excitation & ~~stomach~~ <sup>stomach</sup> ~~stomach~~ <sup>stomach</sup>

in all ~~stomach~~ <sup>stomach</sup> - ~~stomach~~ <sup>stomach</sup> ~~stomach~~ <sup>stomach</sup>

from ~~stomach~~ <sup>stomach</sup> ~~stomach~~ <sup>stomach</sup> ~~stomach~~ <sup>stomach</sup>

disturbance ~~stomach~~ <sup>stomach</sup> ~~stomach~~ <sup>stomach</sup>

stomach - cut it off ~~stomach~~ <sup>stomach</sup> &

find all animals ~~stomach~~ <sup>stomach</sup> ~~stomach~~ <sup>stomach</sup> in 15

10 weeks - ~~stomach~~ <sup>stomach</sup> ~~stomach~~ <sup>stomach</sup>

Drugs & ~~stomach~~ <sup>stomach</sup> - ~~stomach~~ <sup>stomach</sup> ~~stomach~~ <sup>stomach</sup>

a ~~stomach~~ <sup>stomach</sup> ~~stomach~~ <sup>stomach</sup> ~~stomach~~ <sup>stomach</sup>

consequence of ~~stomach~~ <sup>stomach</sup> ~~stomach~~ <sup>stomach</sup>

part ~~stomach~~ <sup>stomach</sup> ~~stomach~~ <sup>stomach</sup> ~~stomach~~ <sup>stomach</sup>

system & ~~stomach~~ <sup>stomach</sup> - ~~stomach~~ <sup>stomach</sup> ~~stomach~~ <sup>stomach</sup>

& ~~stomach~~ <sup>stomach</sup> ~~stomach~~ <sup>stomach</sup> ~~stomach~~ <sup>stomach</sup>

as ~~stomach~~ <sup>stomach</sup> ~~stomach~~ <sup>stomach</sup> ~~stomach~~ <sup>stomach</sup>





Physiology. (See Supplement.)  
1845.

Digestion entire.

Ammonia. present from

(Ammonia present had eight times

that of the rest. All names

of the taking present a measure

of the other matters in a

large or small form. Whitish

liquors sent for each other

even before open the man

out. even for the

right way <sup>in water</sup> at the

recovery sent from the

out. in other ways. kind of

acting like water of plants. is

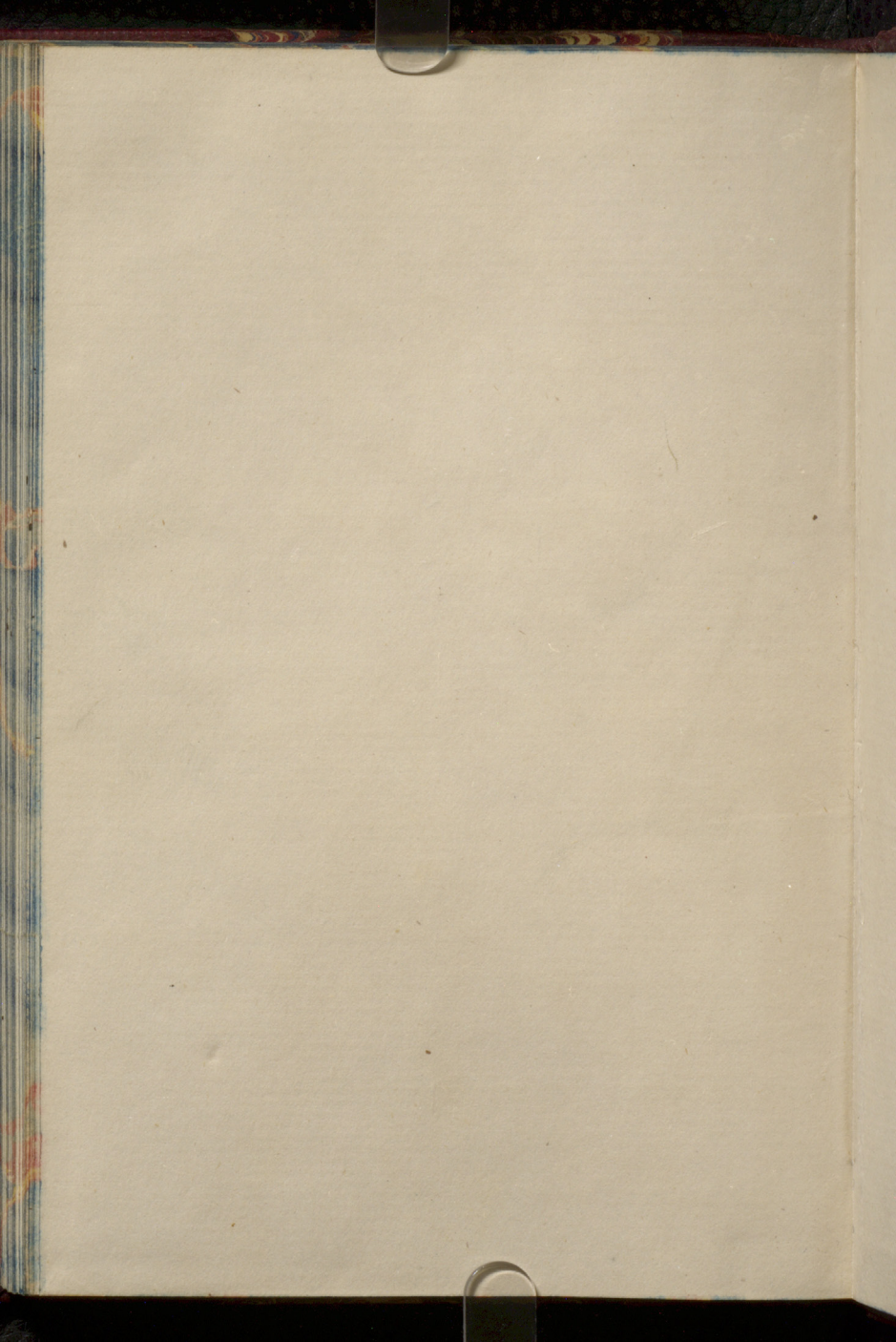
my day age. of plants at the

large: others, and such.

of the = 1840. (See Albumen)

in being a milk, and

Water 274 ~~fructuosa~~





Acc. 612  
v. 24

