

PLATE IX.

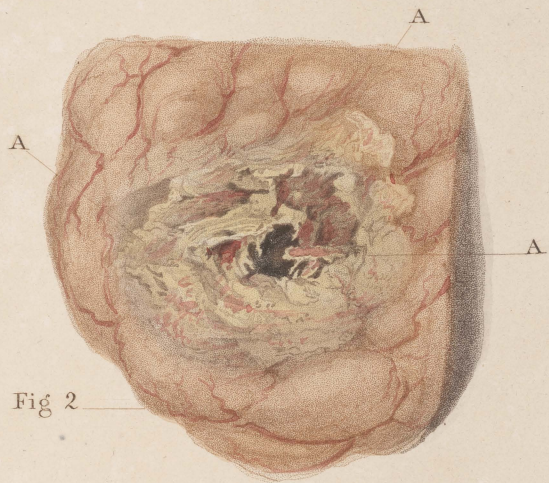


Fig 2

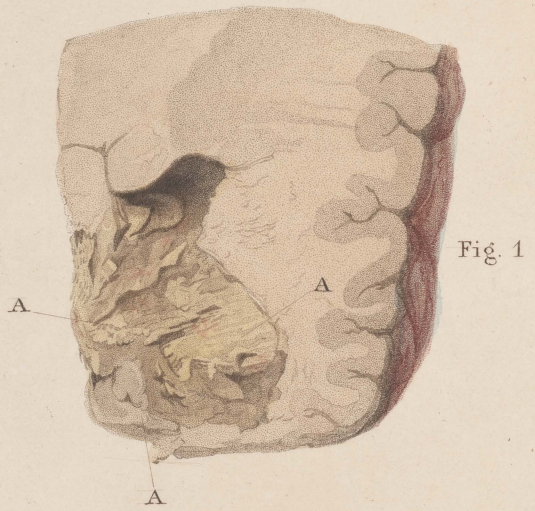


Fig. 1



Fig. 3

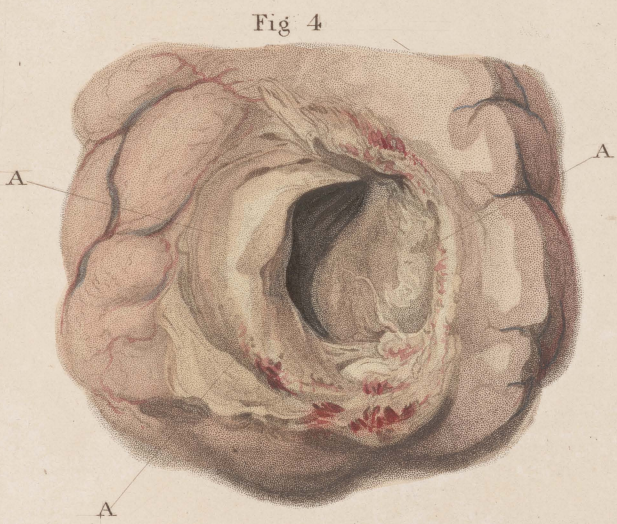


Fig 4



Fig. 5

J. Stewart, Junr del.

J. Stewart, Senr sculp.

ABSCESS OF THE BRAIN.

PLATE IX.

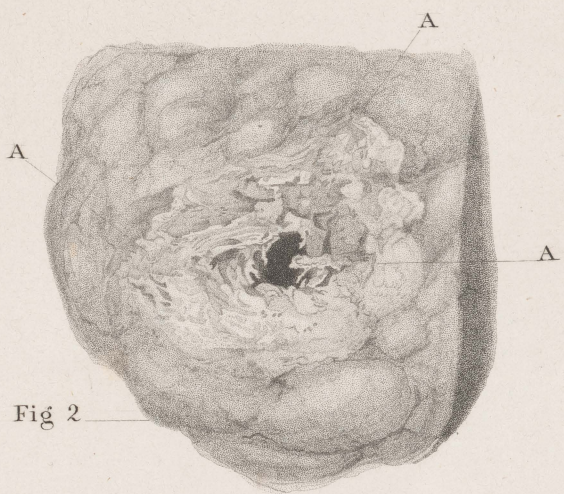


Fig 2

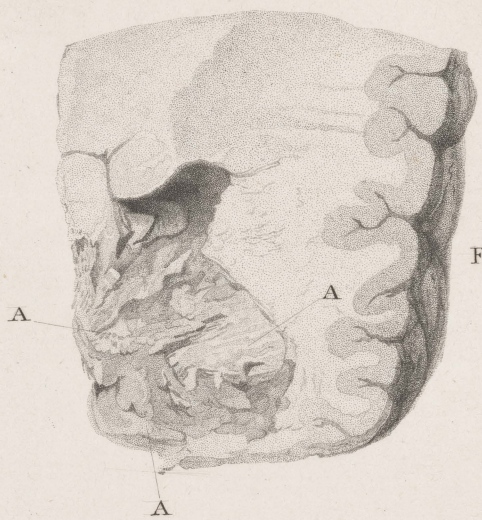


Fig. 1

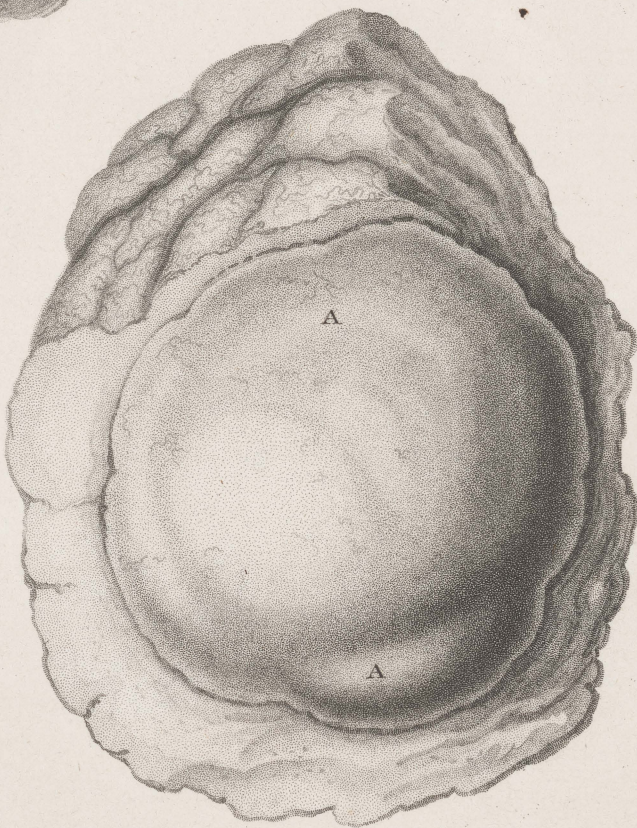


Fig. 3

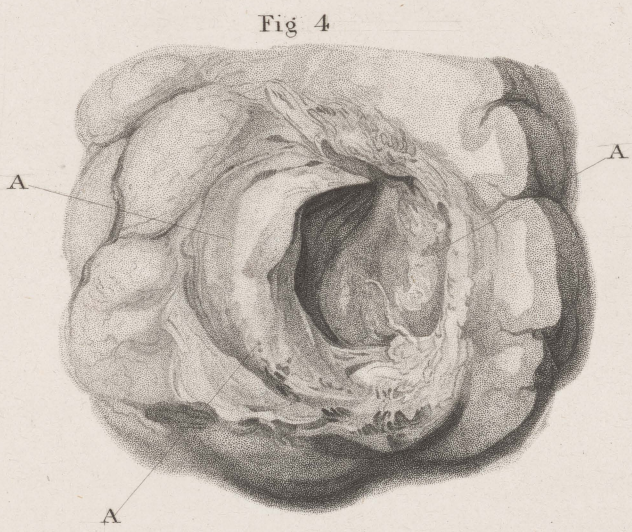


Fig 4



Fig. 5

J. Stewart Jun^r del^t

J Stewart Sen^r sculp^t

ABSCESS OF THE BRAIN.

PLATE. IX.

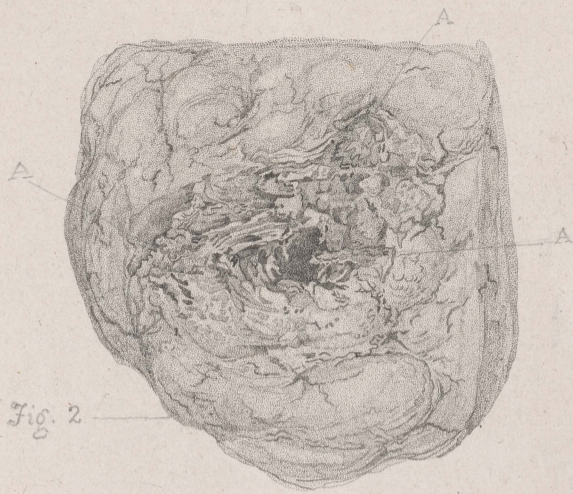


Fig. 2

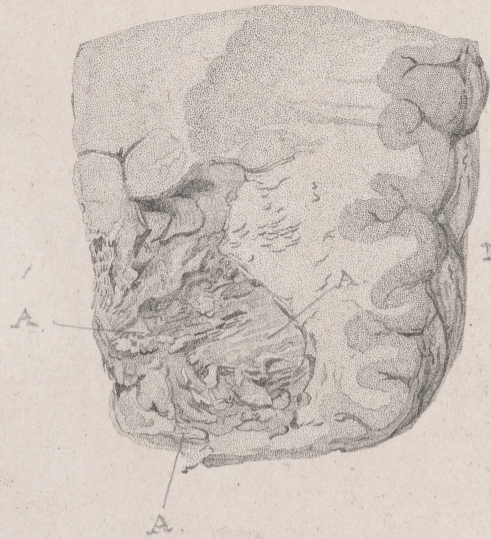


Fig. 1.



Fig. 3

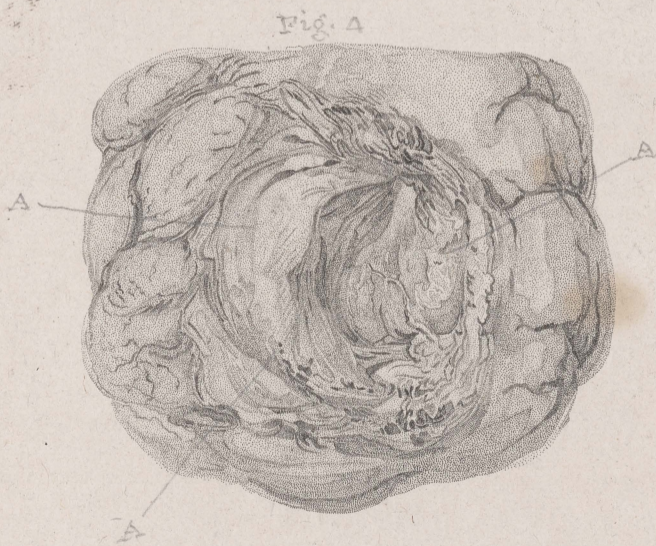


Fig. 4



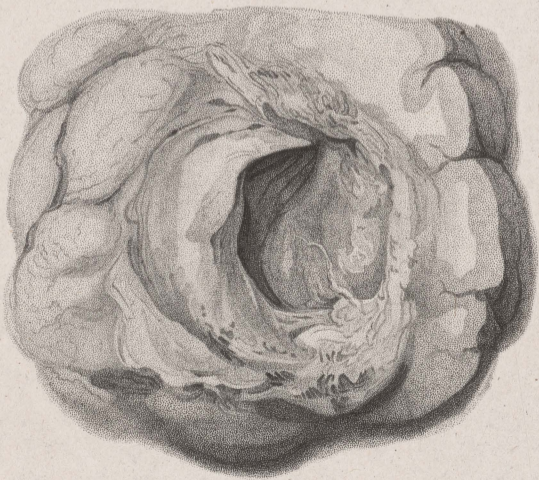
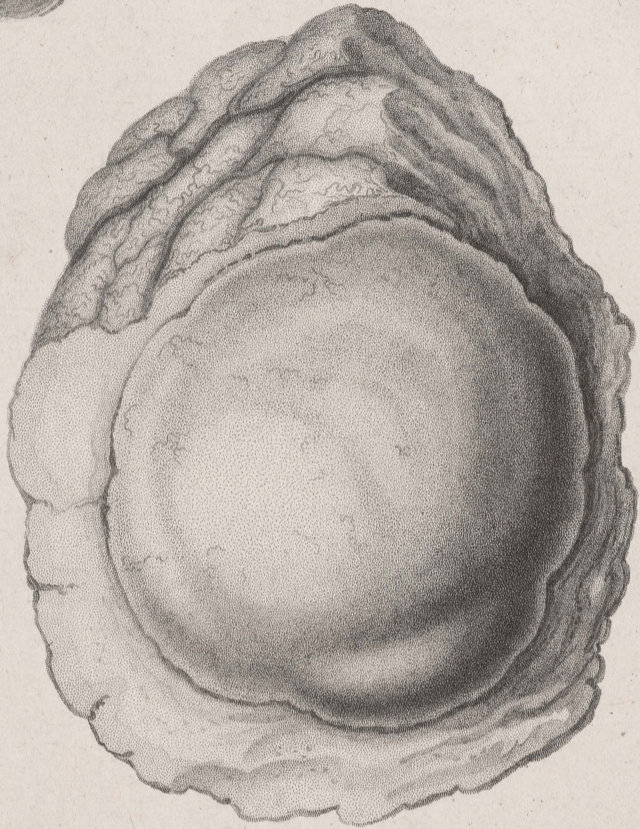
Fig. 5.

J. Stewart Junr del.

J. Stewart Senr sculpt.

ABSCESS OF THE BRAIN.

IX



IX

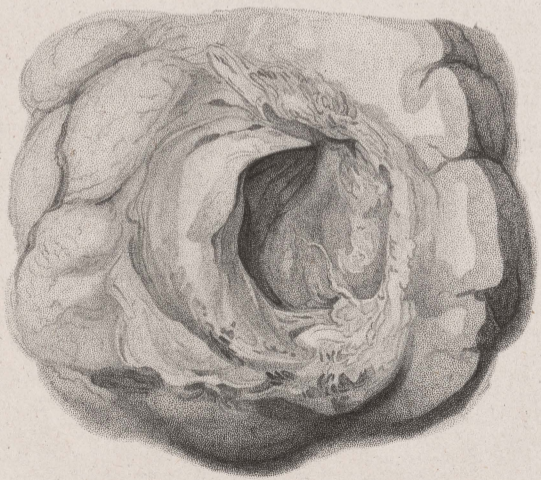
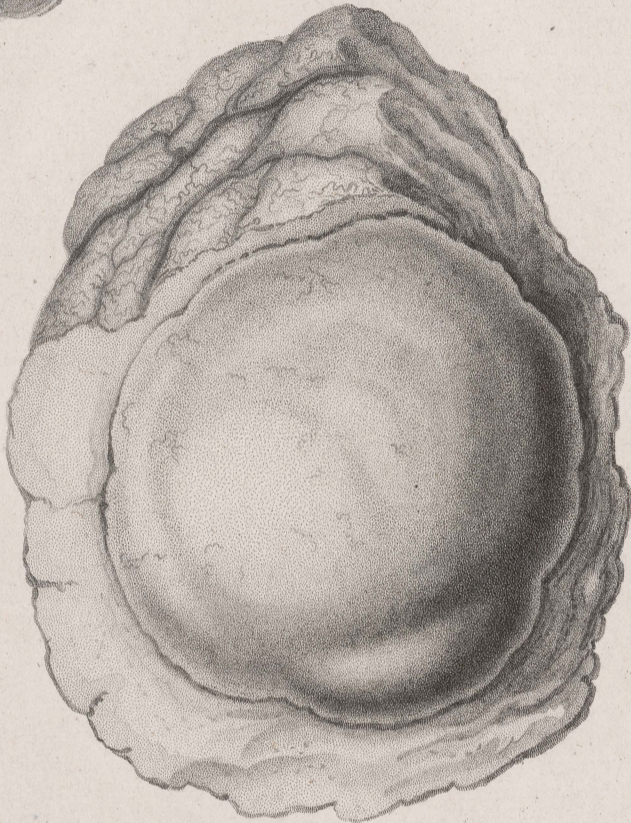
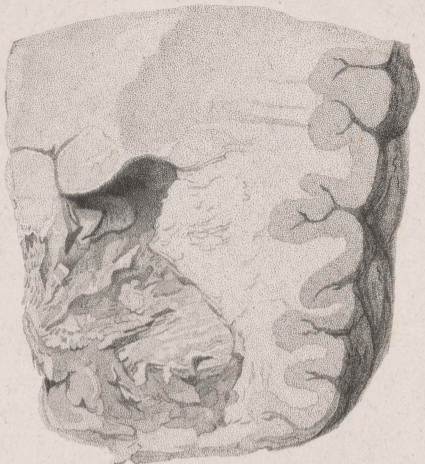
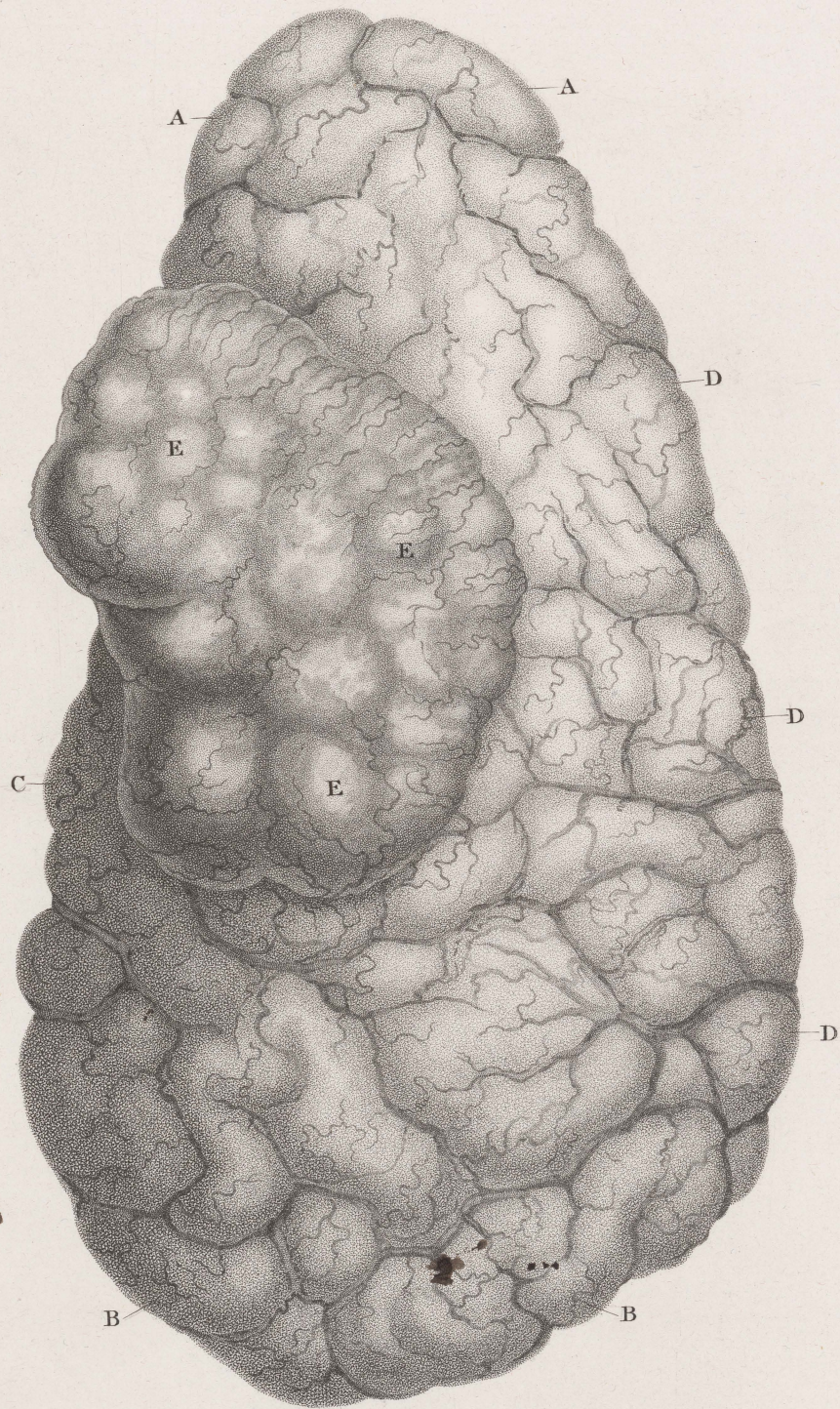


PLATE X.

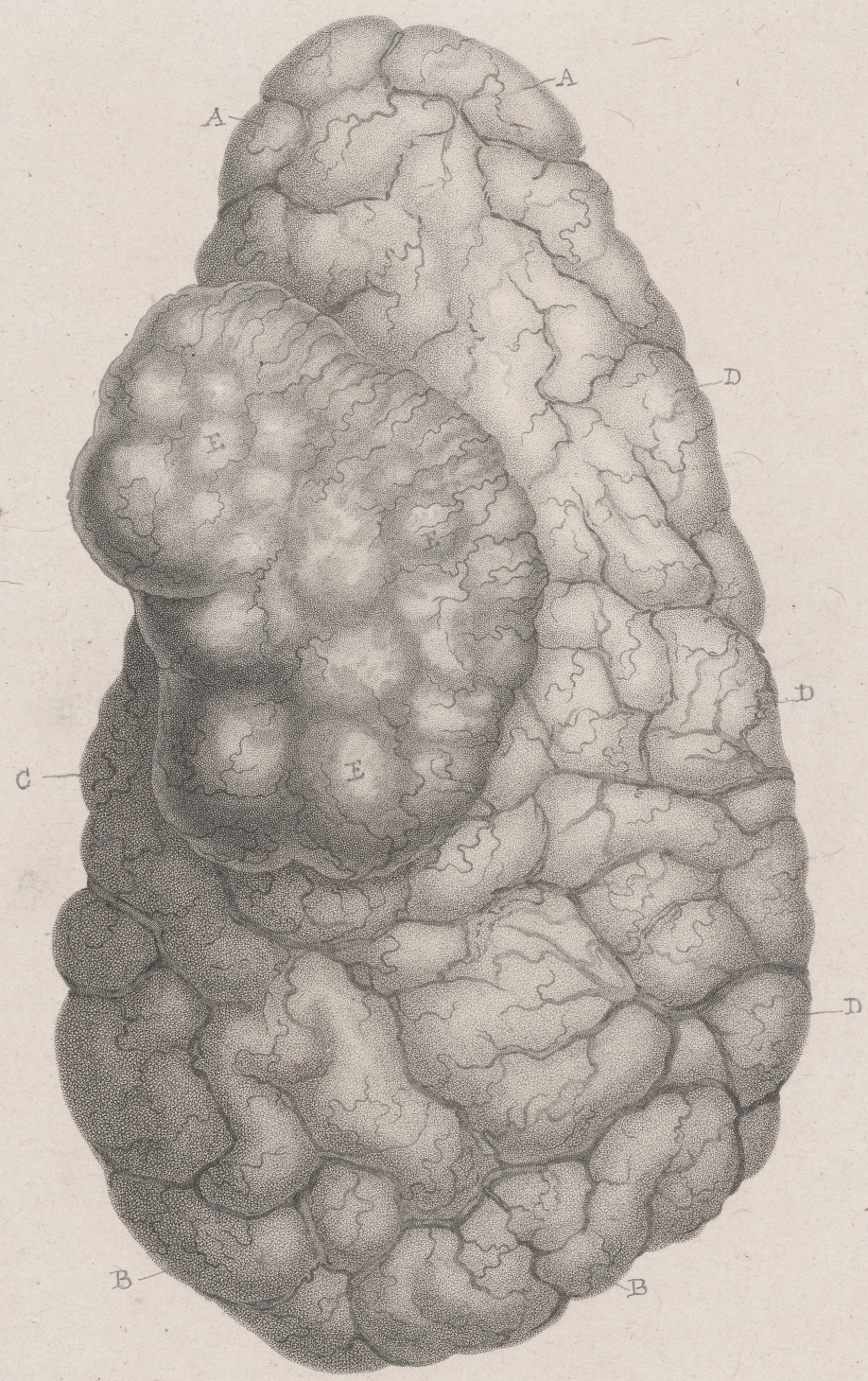


J. Howship, del^t

J. Stewart, Sen^r sculp^t

HÆMATOMA OF THE BRAIN.

PLATE X.

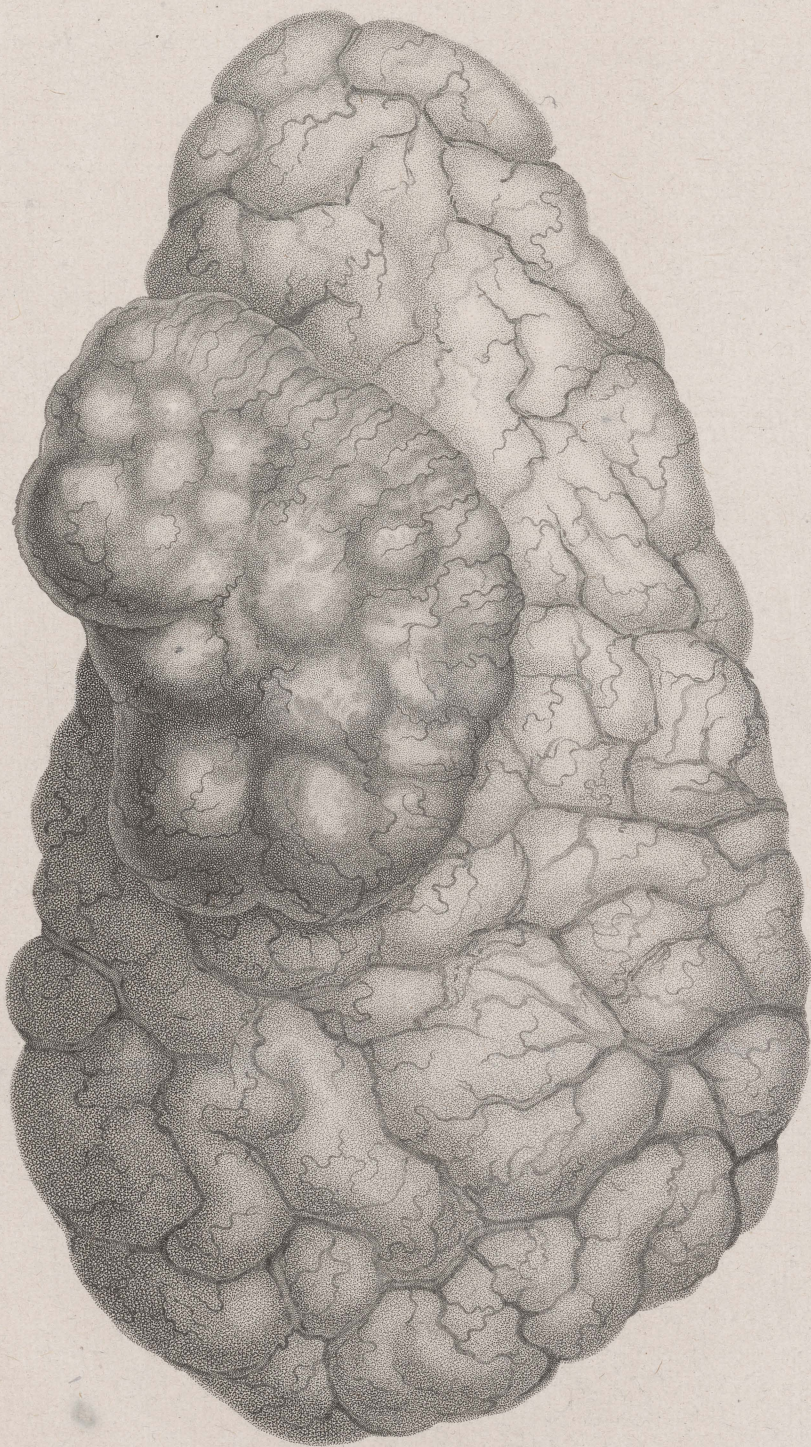


J. Howship delt

J. Stewart Sculp

HEMATOMA OF THE BRAIN.

8



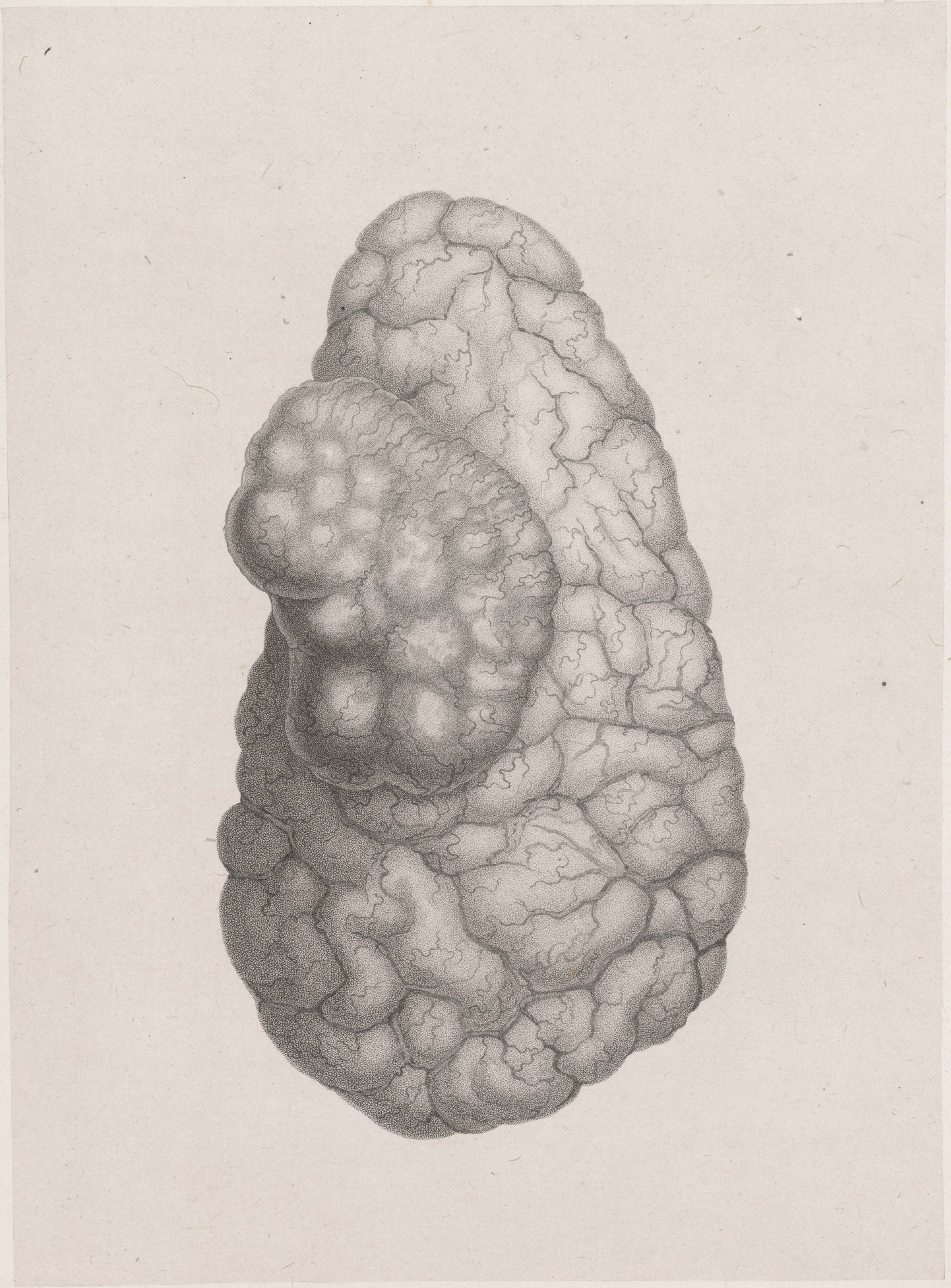


PLATE XI.



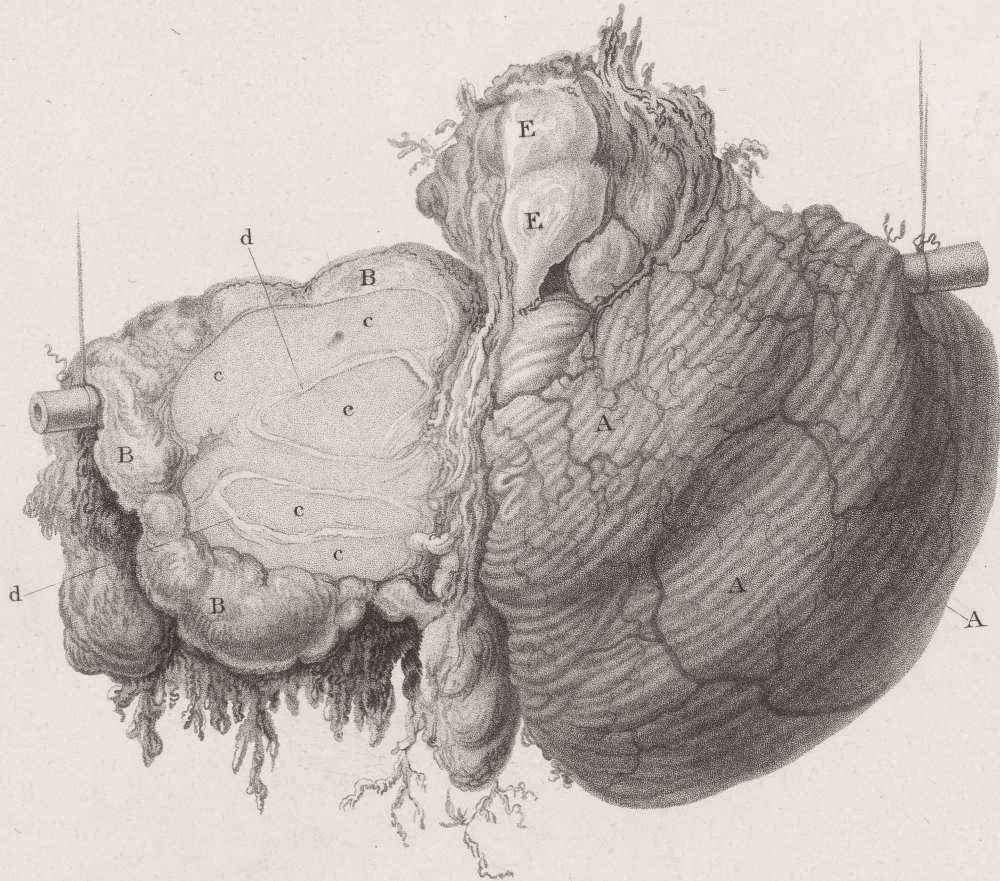
G. Kirckland del.

J. Stewart sculp.

SCROFULA OF THE CEREBELLUM.

Published by D. Hooper, Jan^y 1820.

PLATE XI.



G. Kirkland, del.

J. Stewart, sculp.

SCROFULA OF THE CEREBELLUM.

PLATE XI.



G. Kirkland del^t

J. Stewart sculp^t

SCROFULA OF THE CEREBELLUM.

X



PLATE XII.



J. Howship, del^t

J. Stewart, sculp^t

TUBERCLES OF THE BRAIN
and
DISEASES OF THE CHOROID PLEXUS AND PINEAL GLAND.

Fig. 1.

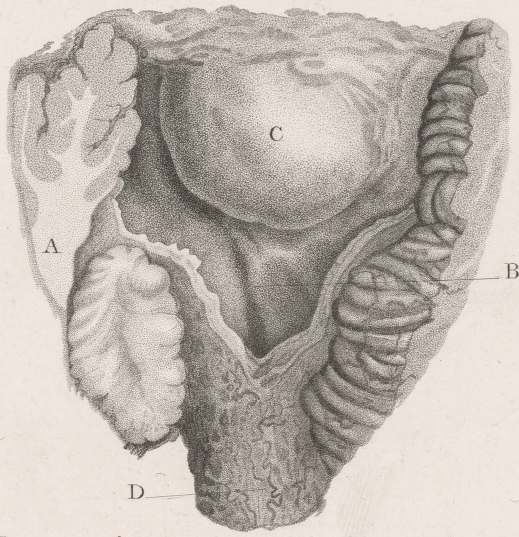


Fig. 8.

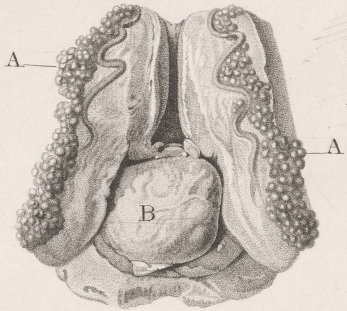


Fig. 7.

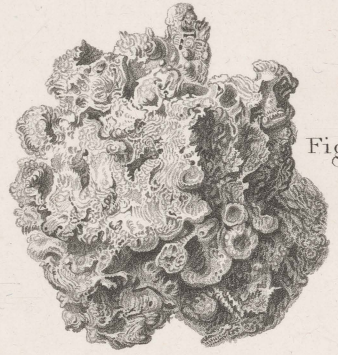


Fig. 3.

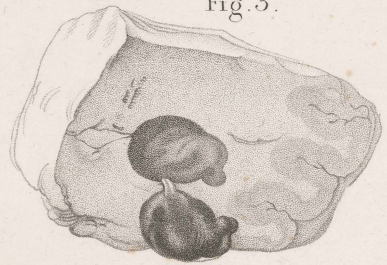


Fig. 4.

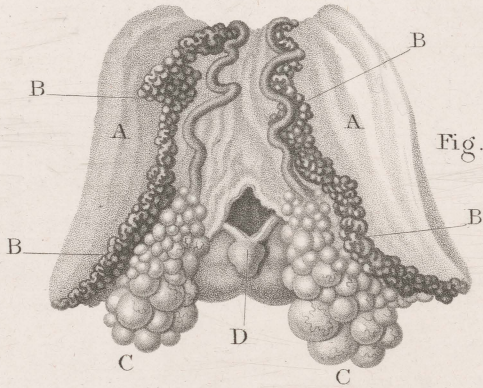


Fig. 2.

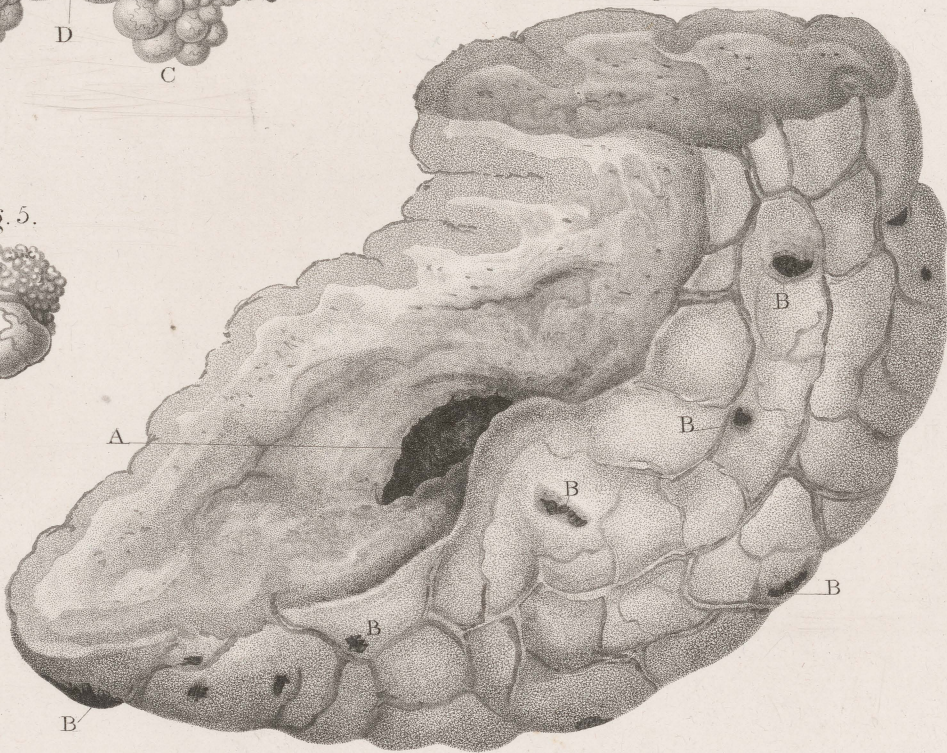


Fig. 5.

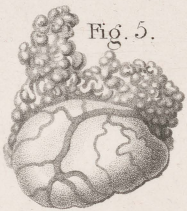


Fig. 6.



J. Howship, del.

T. Stuart, sculp.

TUBERCLES OF THE BRAIN
and
DISEASES OF THE CHOROID PLEXUS AND PINEAL GLAND

PLATE XII.

Fig. 1.

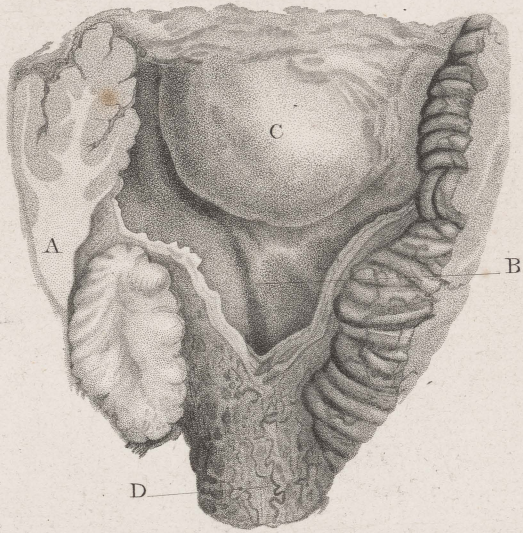


Fig. 8.

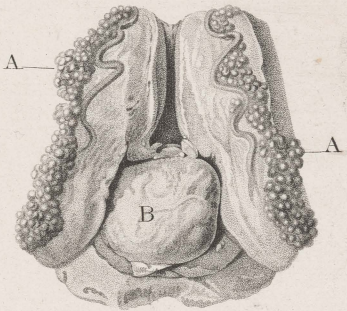


Fig. 7.

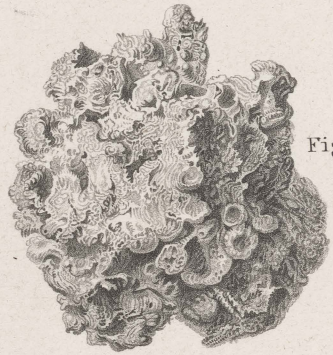


Fig. 3.

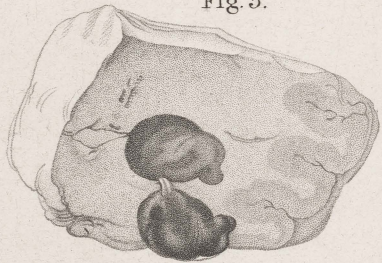


Fig. 4.

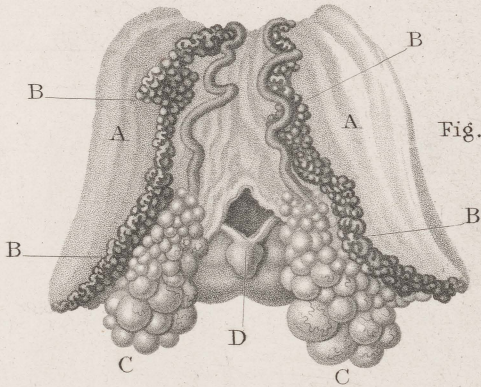


Fig. 2.

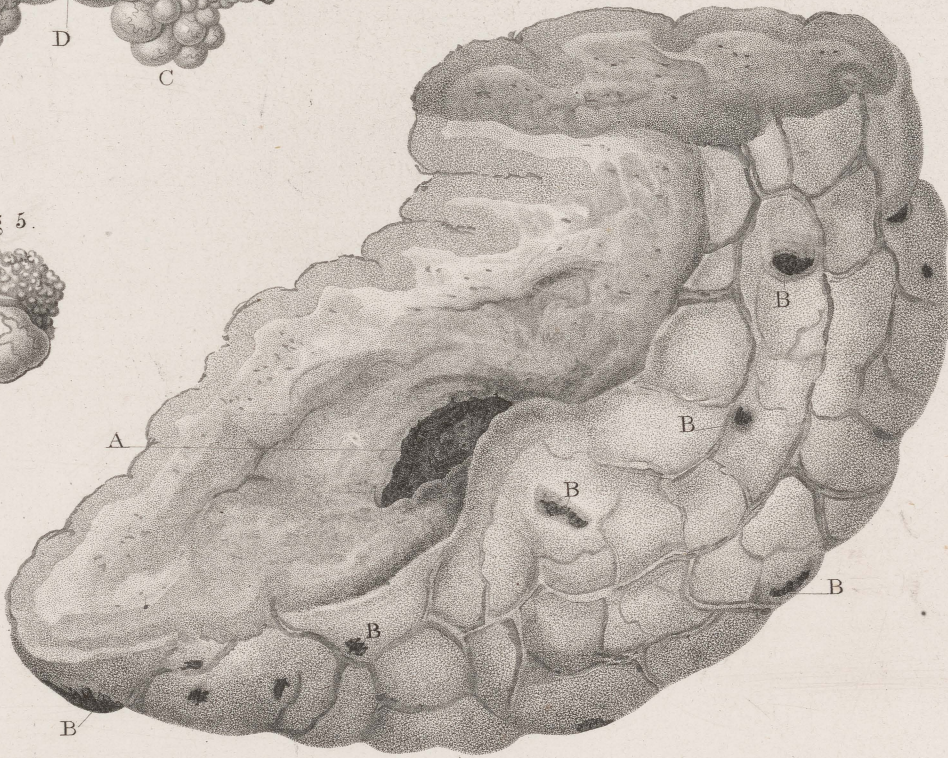


Fig. 5.

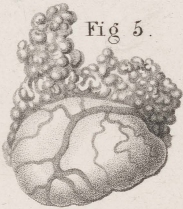


Fig. 6.



J. Howship del^r

J. Stewart sculp^t

TUBERCLES OF THE BRAIN
and
DISEASES OF THE CHOROID PLEXUS AND PINEAL GLAND.

Published by D^r. Hooper Jan^r. 1826.

Fig. 1.

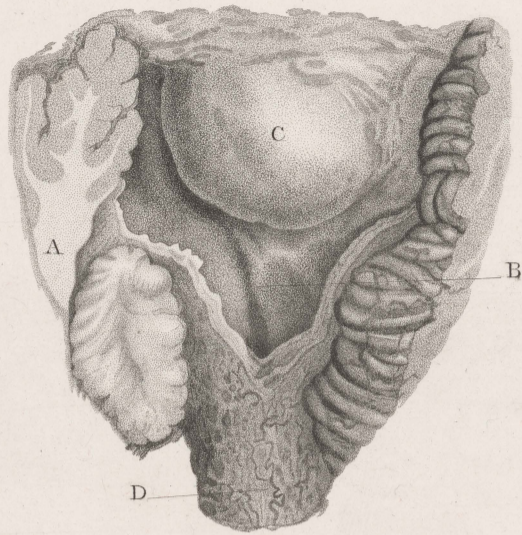


Fig 8.

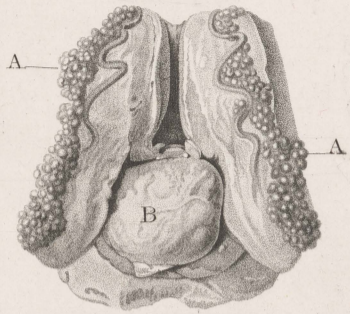


Fig. 7.

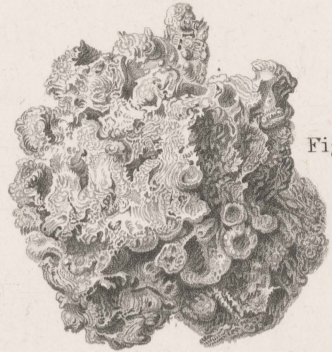


Fig. 3.

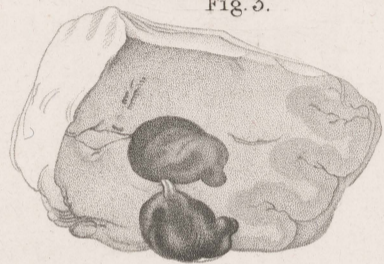


Fig. 4.

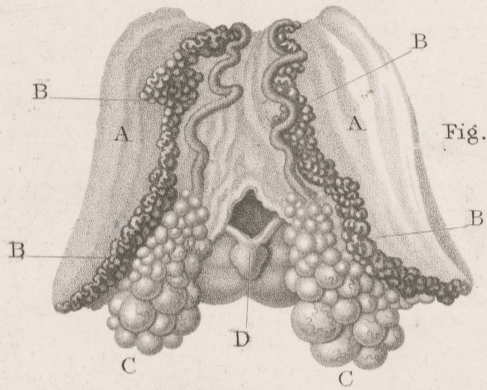


Fig. 2.

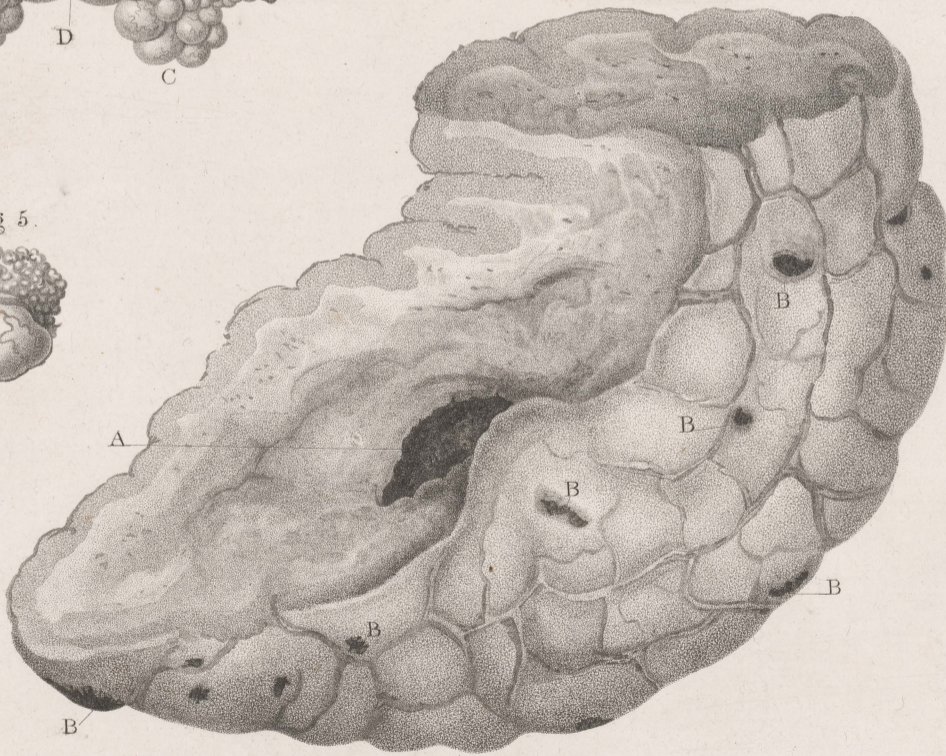


Fig 5.



Fig. 6.

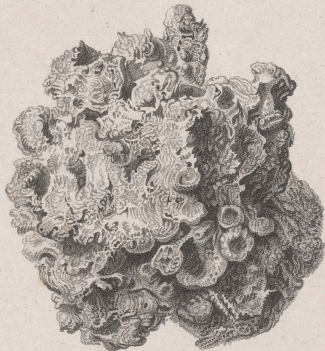


J. Howship, del^t

J. Stewart, sculp^t

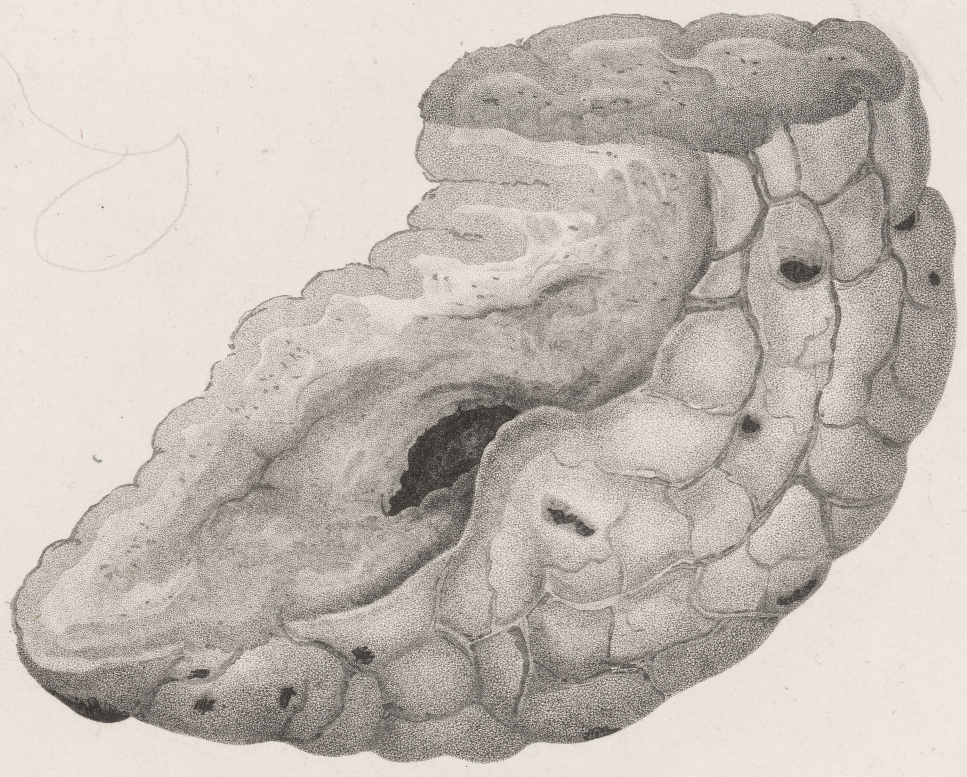
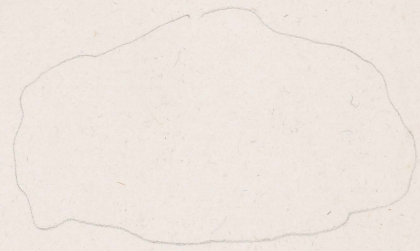
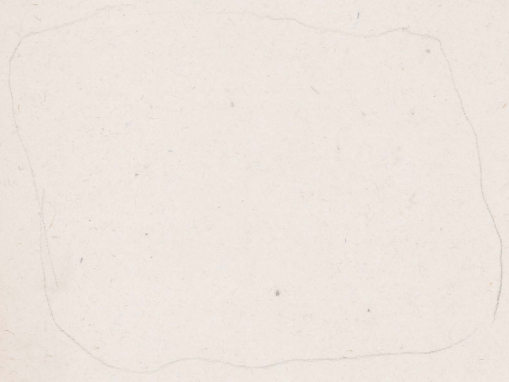
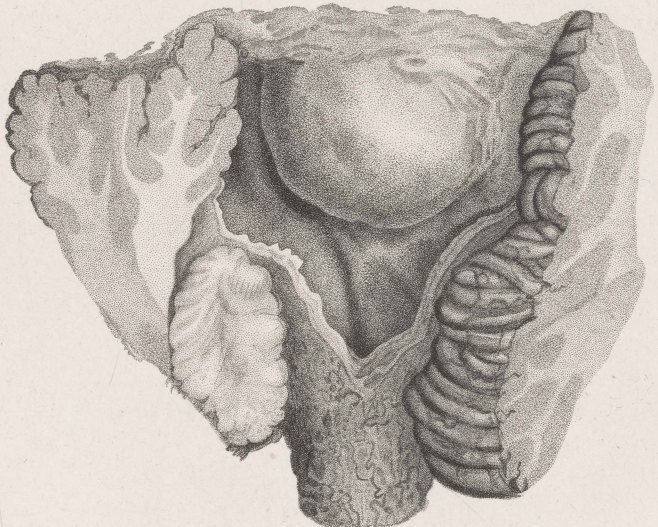
TUBERCLES OF THE BRAIN
and
DISEASES OF THE CHOROID PLEXUS AND PINEAL GLAND.

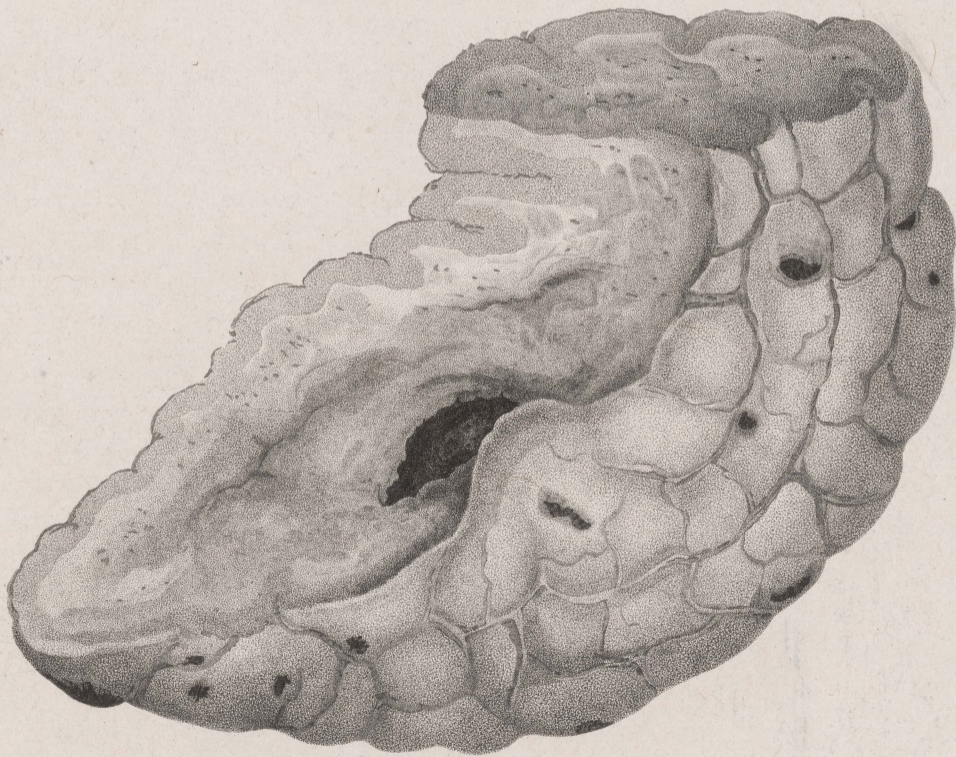
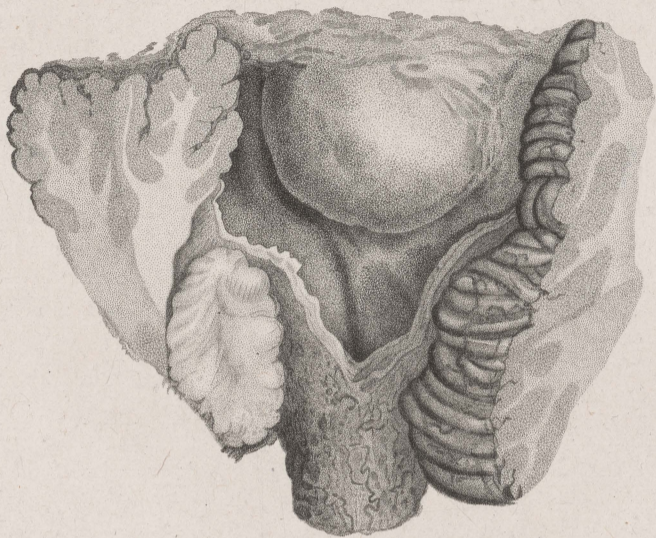
55

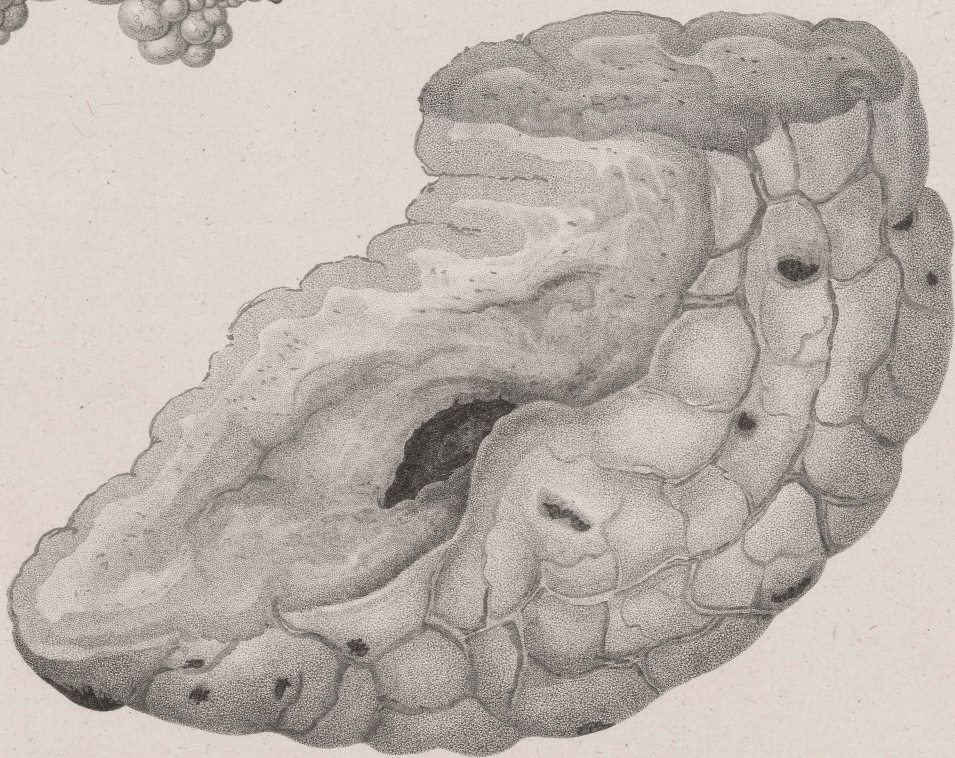
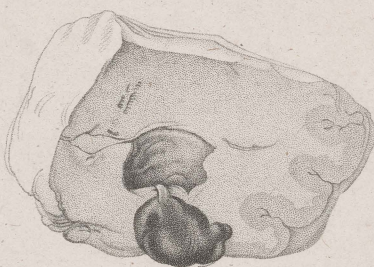
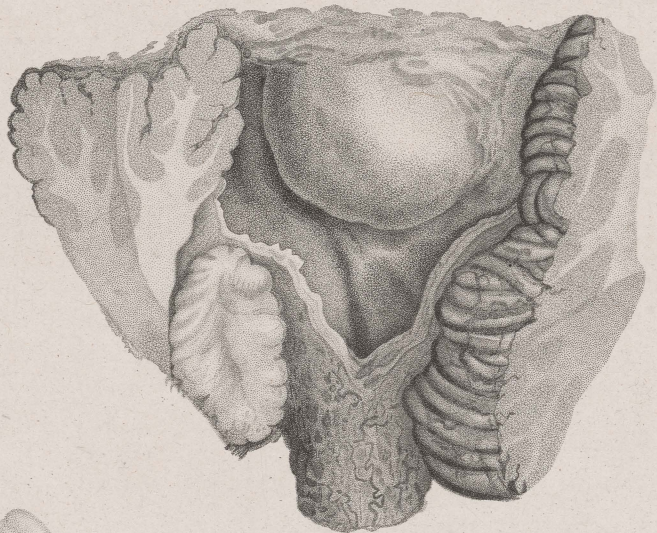


Part impression of a bony tumour
found in the Brain.

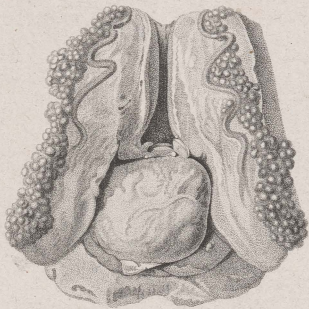








56



*Proof impression of
Dissected Pineal gland.*

Figure 1.

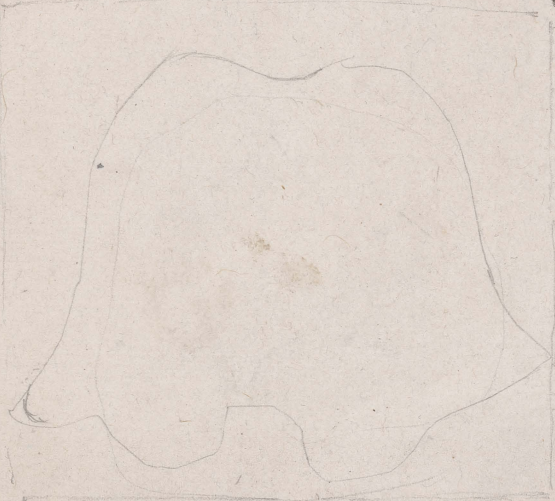
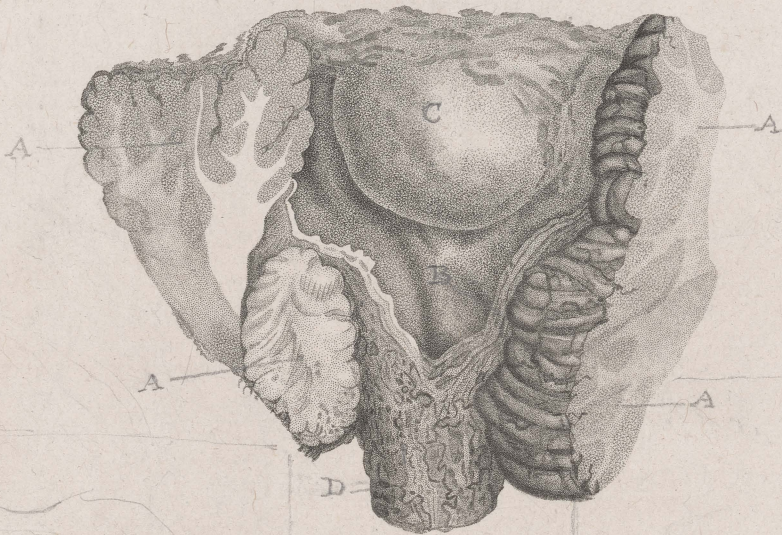


Figure 2.



TUBERCLES of the BRAIN.

PLATE XIV.



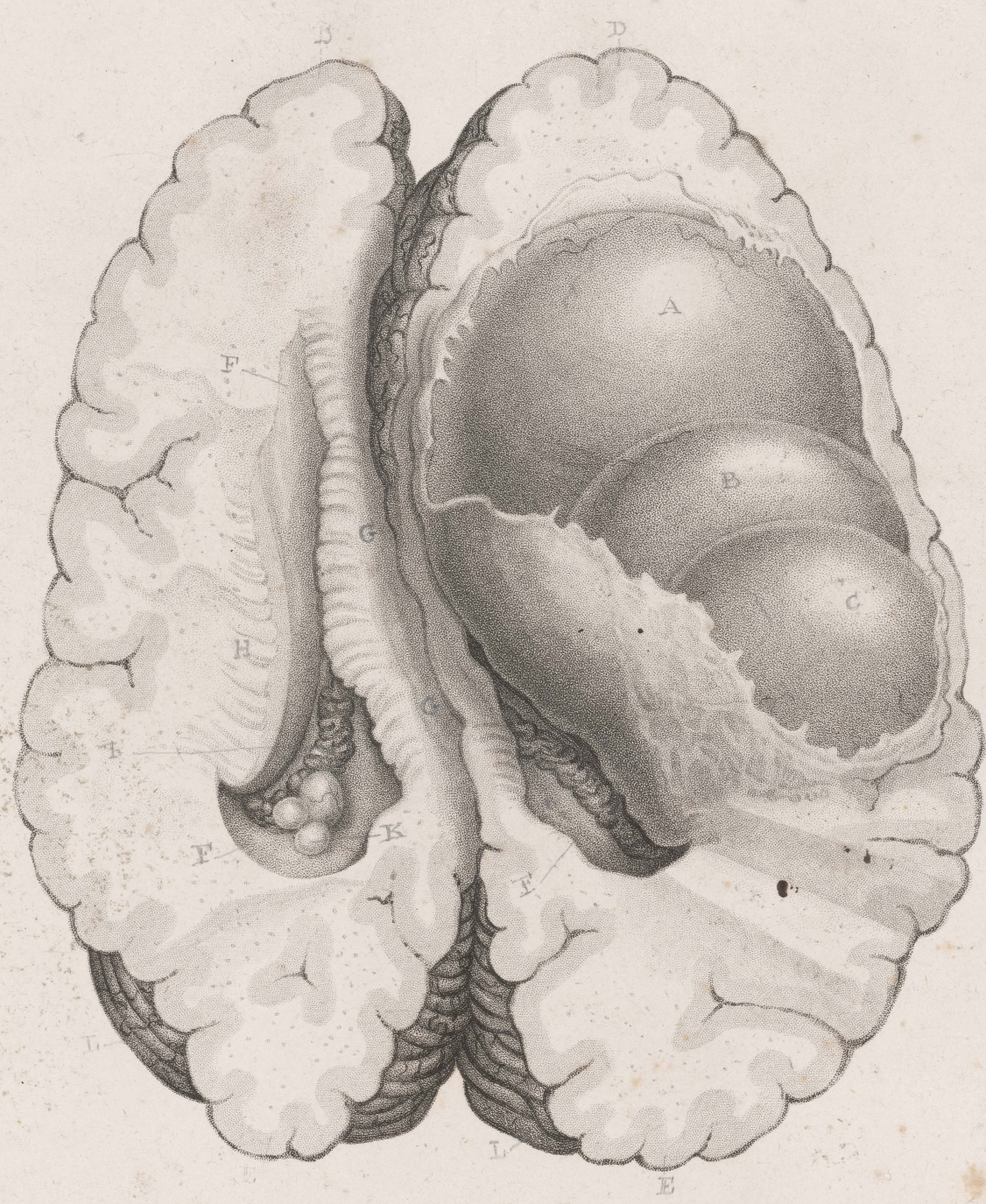
J. Howship, del.

J. Stewart, sculp.

VESICLES OF THE BRAIN.

Published by D^r. Hooper, Jan^r. 1826.

Plate XW



J. Horsley del

J. Stewart sculp

VESICLES OF THE BRAIN.

XIV

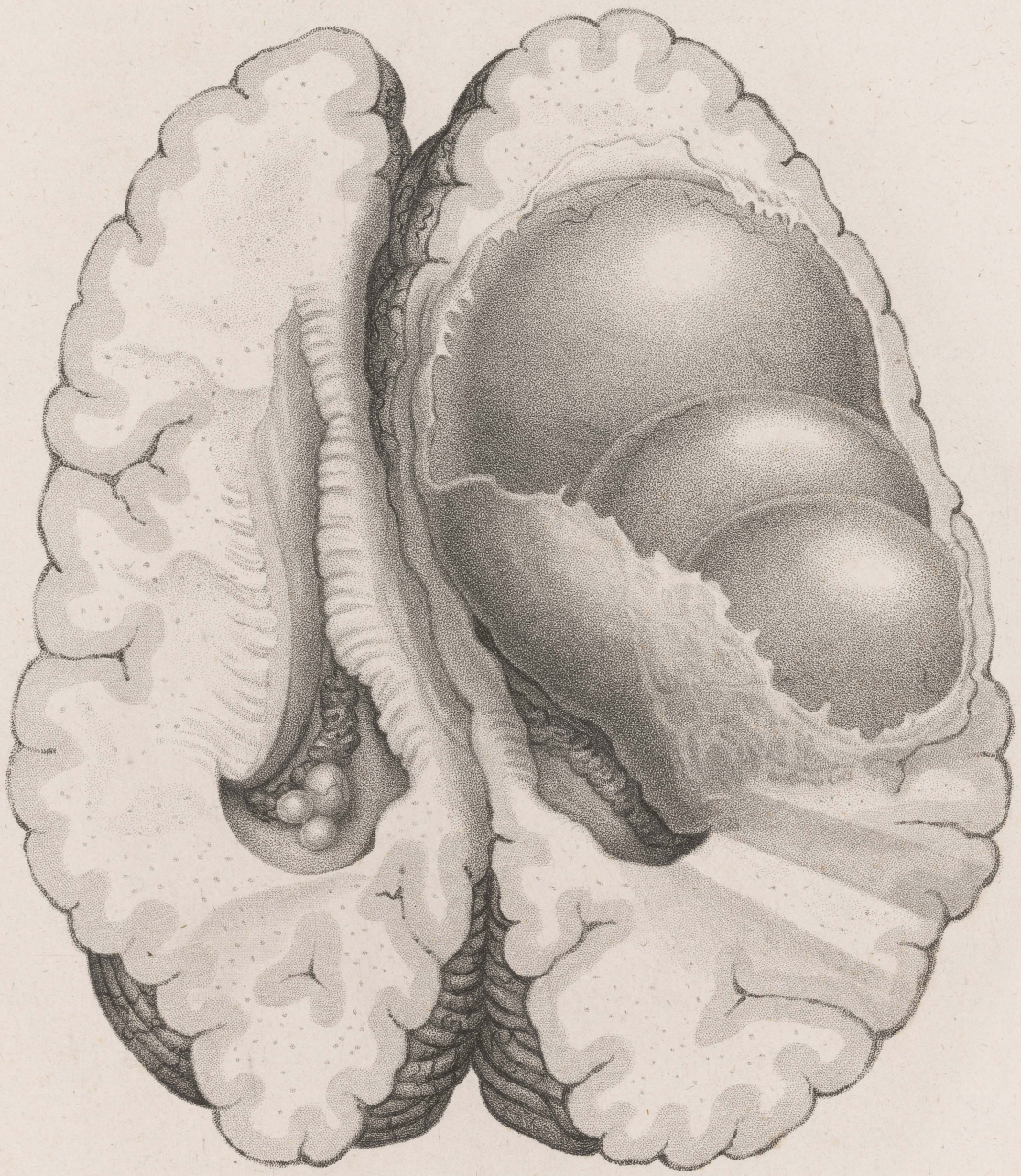


PLATE XV.



G. Kirtland del.

J. Wedgewood sculp.

EXTRAVASATION OF BLOOD
in the
BRAIN.

Published by D^r Hooper, Jan^y 1826.



