

GUELPH GENERAL HOSPITAL

Established 1875



Golden Jubilee

SCHOOL *for* NURSES

1888 - 1938



GUELPH GENERAL HOSPITAL

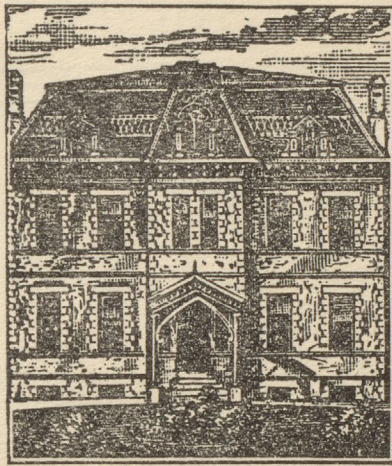
(Established 1875)

45^m
No
a1092
350

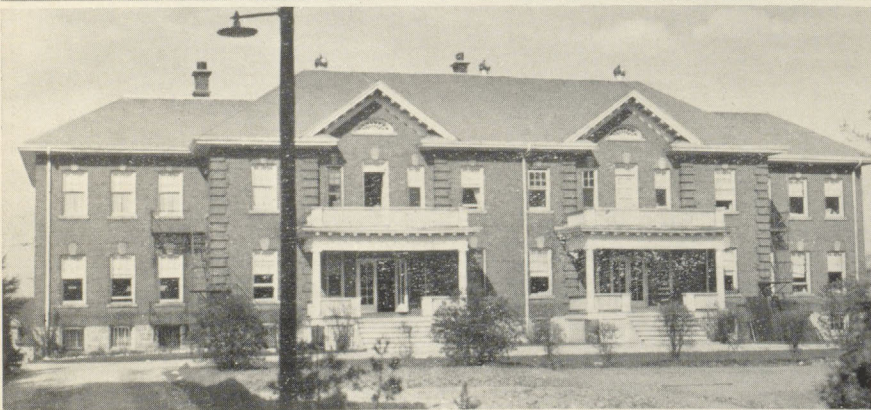
Golden Jubilee
School for Nurses



1888 - 1938



The original Hospital, 1875



The Present Buildings

Nurses' Residence

Main Building

Jr. Residence and Isolation Wing



Present Board of Commissioners

Top row—Mr. W. P. Gamble, Dr. W. J. R. Fowler (Chairman), Mr. G. L. Bush
Middle row—Mr. Jas. Myles, Mr. W. G. Taylor (Mayor)
Bottom row—Dr. T. R. Pickard (Medical Representative), Mr. J. Curzon

Guelph General Hospital

HISTORICAL SKETCH

The Guelph General Hospital was incorporated by Act of Parliament of the Province of Canada, 24 Vic., Chap. 111, and assented to 18th May, 1861, by which the following gentlemen were constituted a body corporate and politic by the name of "*The Guelph General Hospital.*"

The Hon. Adam Johnson Ferguson; David Stirton; James Ross, M.P.; Wm. Whitelaw, Warden of the County of Wellington; Thomas S. Parker, Mayor of the Town of Guelph; Rev. Arthur Palmer; Rev. John Douse; Rev. T. Adams; Rev. W. F. Clarke; Rev. John Clarke; Rev. John Holtzer; Rev. John Hogg; Rev. H. Melville; Rev. E. M. Stewart; Rev. Robert Torrance; Chas. Clarke, Reeve, Elora; W. Robertson, Reeve, Fergus; John Harvey, Reeve, Town of Guelph; N. Higinbotham; G. M. Keeling; Wm. Clarke, M.D.; H. W. Peterson; David Allan; Thos. Sandilands.

The act provided that there should be one hundred annual subscribers, of at least \$4.00 each, before any election of directors could take place; and it was not till November, 1872, that these were obtained, when a meeting of the subscribers was held in the Town Hall, November 19th, 1872—Mr. David Stirton in the chair, and Mr. John C. McLagan, secretary, and the following gentlemen were elected directors:

FIRST DIRECTORS

John Horsman	D. Stirton	Dr. Clarke	N. Higinbotham
F. W. Stone	James Massie	Charles Raymond	
George Elliott		Peter Gow	
Andrew Lemon	John McCrea	Robert Bell	

Mr. George Elliott was appointed chairman and John Horsman, vice-chairman; Chas. Raymond, treasurer; Andrew Lemon, secretary. Committees were appointed to select a site for the hospital, wait on the County Council and Town Council and to solicit subscriptions from the citizens generally. On the 11th of January, 1873, the offer of Dr. Clarke to sell four acres of land on Delhi Street for hospital purposes

for \$1,000 was accepted. This has proved an ideal site for the hospital. The buildings are situated in spacious grounds with shady lawns and bright flowers. The grounds being at the outskirts of the town and on a gently rising hillside command a charming view of the surrounding country. The County Council in the meantime having granted \$1,500 towards the building of the hospital, to be paid at its completion, the Board decided to get plans for a building to cost not more than \$6,000.

Plans were procured and tenders called for on the 27th October, Mr. Stewart's plan was accepted and he was instructed to prepare plans and specifications for central part of hospital, and the cost was not to exceed \$8,000 instead of \$6,000.

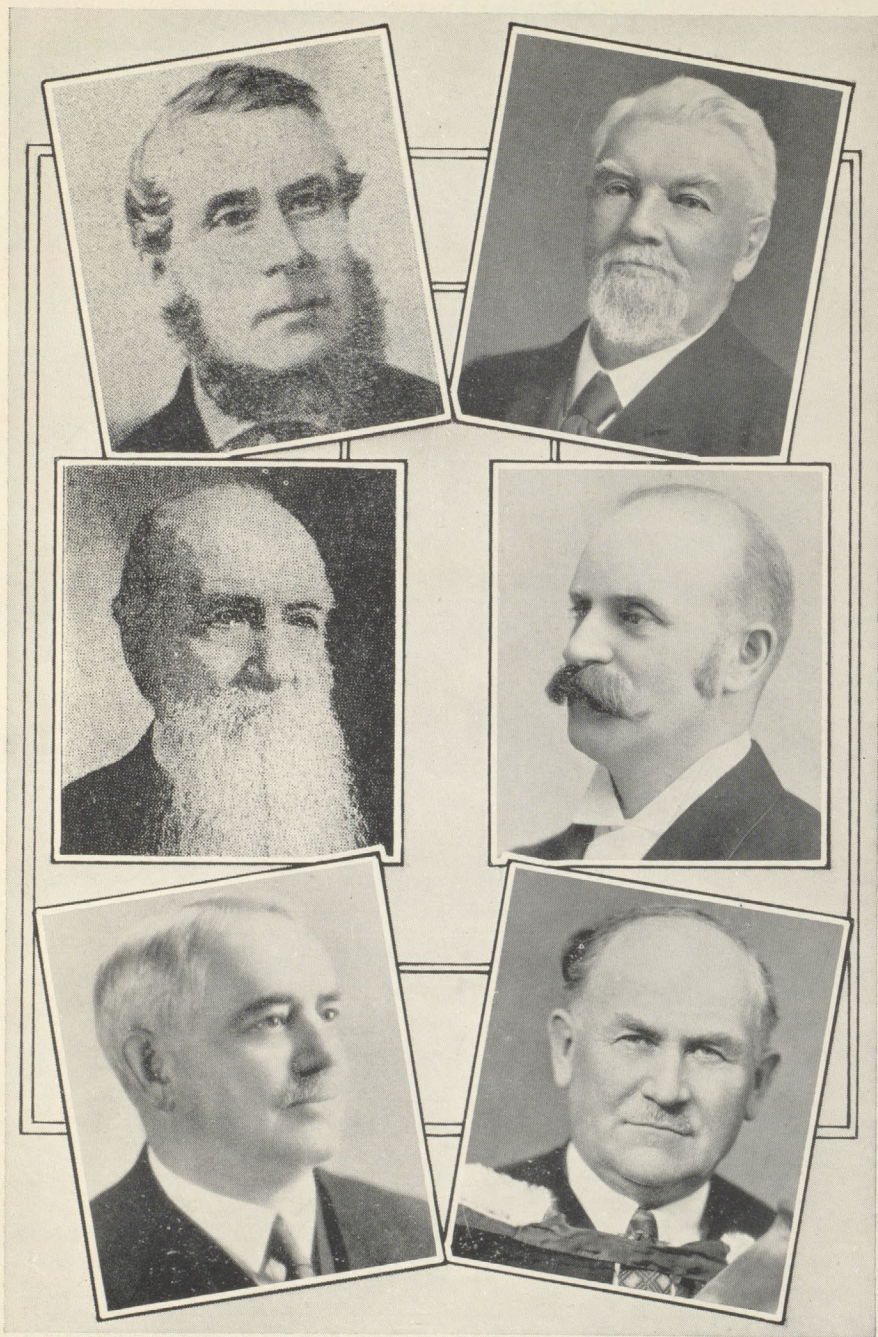
In addition to excavating, stone and brick work, carpentry, painting, glazing, etc., contracts were afterwards let for hot air furnace, plumbing, etc., making the total expenditure \$9,871.49 with funds to meet this as follows:

Subscriptions	\$3,046.00
Grants	3,600.00
From churches	326.27
Sundries	9.22
	<hr/>
	\$6,981.49

Leaving a balance of \$2,390 as a debt on the buildings and site.

The hospital was opened for the reception of patients on August 16th, 1875 with Miss Law as superintendent and a staff of two nurses—Mrs. Ford and Mrs. Fraser.

There were twelve beds for patients, and during the first year fifty-six patients were treated. There was no operating room proper, but there was a small infectious ward, a dispensary, and public wards for men and women, and two or three private wards, all plainly and comfortably furnished by the ladies of the city at a cost of about \$2,060.95, the total amount raised by subscription by them being \$2,271.13; the surplus of \$210.18 being donated by them to the building fund. The following ladies were among the active members of the furnishing committee: Mrs. Wilson, Mrs. Webster, Mrs. Dr. Clarke, Mrs. E.



Chairmen Board of Directors

George Elliott, 1872-1893; James Goldie, 1893-1901; R. Melvin, 1901-1903; A. W. Alexander, 1903-1922; J. M. Taylor, 1922-1930; W. J. R. Fowler, 1930-



Superintendents

Miss Elizabeth Law, 1875-1888; Miss Louisa Eastwood (Mrs. A. D. Bruce), 1888-1889; Miss Annie L. Locke, 1890-1892; Miss L. J. Sheppard (Mrs. W. O. Stewart), 1893-1906; Miss M. J. O'Neill, picture not obtainable, 1906-1908; Miss A. C. Smith, 1908-1911; Miss J. R. Reekie, 1911-1916; Miss A. Forgie, 1916-1920; Miss Mary C. Stewart, 1920-1923; Miss A. Schaefer (Mrs. W. Michael), 1923-1925; Miss Elizabeth Shortreed (Mrs. Lyle Watson), 1925-1928; Miss Mary F. Bliss, 1928-1932; Miss S. Agnes Campbell, 1932-

Newton, Mrs. George Newton, Mrs. Cormack, Mrs. Raymond, Mrs. Keatinge, Mrs. Melvin and others.

In November, 1875, the treasurer reported that a grant of \$500 had been received from the County of Wellington towards the maintenance of the hospital, and a similar amount from the Town of Guelph. In February, 1876, the County gave another grant of \$600 and the Ontario Government \$800, all towards the maintenance. These were the first public grants outside of grants to building fund.

At the beginning of 1886, Mr. B. Sinner was appointed steward, and continued in that position, as well as medical dispenser, until 1921, when he returned to his native land, Switzerland, where he passed away the following year. During his association with the hospital, Mr. Sinner became a familiar personality, not only in the hospital, where his advice was often sought, but also in Guelph, where he made a great many friends who deeply regretted his resignation and departure from their midst.

By 1886 the number of patients admitted had increased to such an extent that it was found necessary to enlarge the institution. A public meeting was held and it was decided to erect a wing on the east side to be called the Victoria Jubilee wing. Committees were appointed to canvas the city for funds and to prepare plans and specifications, and on June 14th, 1887, tenders were accepted calling for a total expenditure of \$9,869.00.

On July 19th, 1887, the corner stone was laid by the chairman, Mr. Geo. Elliott. In the receptacle of the stone were placed copies of the Toronto Mail and Globe, Guelph Mercury and Guelph Herald; the year of the reign of Her Majesty; the names of the Governor-General and Lieutenant-Governor; the Judge and Warden of the County of Wellington; the names of the Directors; members of the Building Committee and a statement of the fact that the wing was built as a jubilee memorial of the jubilee year of Her Majesty, Queen Victoria. There was a large concourse of spectators present, including the clergymen, judges and leading men of the city.

On the 1st of March, 1888, the new wing was opened for the reception of patients, a large number of citizens being present.

The building was plainly and comfortably furnished and was well adapted for the purpose, and has been a great blessing to the county and city. One room was set apart as an operating room; the hospital had not had one before, although many operations had previously been performed.

The attic in which were situated the nurses' bedrooms, and convalescent rooms for diphtheria patients, was not finished until three years afterwards, and cost when furnished \$1,200.

Early in the year 1888, Miss Law resigned and Miss Louisa Eastwood was appointed lady superintendent. Shortly after Miss Eastwood's appointment, the school for nurses was opened. One year later Miss Eastwood resigned, and Miss Locke, lady superintendent of the Pennsylvania University Hospital, assumed the position until November 29th, 1892, when she resigned, having obtained a similar position in Galveston, Texas. On January 3rd, 1893, Miss Shepherd, assistant lady superintendent of Toronto General Hospital, was appointed to succeed Miss Locke.

In the meantime, the number of patients continued to increase, and once more it was found necessary to enlarge the hospital. On June 4th, 1895, the house committee was instructed to procure a sketch and other necessary information having in view the erection of an additional wing to the hospital; also the erection of a kitchen and laundry. Plans were prepared and tenders were let February 26th, 1896.

When completed the total cost including furnishing, drainage, fixing grounds, etc., was close to \$22,000. The operating room was one of the best in the province, thoroughly equipped in every respect, the heating and ventilation, all that could be desired. On the first two floors, off the halls, were two fine sun rooms, and with nurses' rooms, elevators, etc., made one of the most complete institutions of the kind at that time, accommodating 90 patients. The late Geo. Elliott left the sum of \$10,000 to clear off the debt of the old building and to help build the new. The public opening took place on March 2nd, 1897, and on motion of Mayor Hewer and the warden of the county, it was called, The Albert Wing.

In 1904, the Elliott Home was erected by money left by the late George Elliott for that purpose. Mr. Elliott had always taken the

keenest interest in the hospital from its beginning, and according to his will, the home was to be erected on hospital grounds and governed by a board of directors to be selected by the hospital directors from their own members.

The next step toward improvement was the buying of the house and land adjoining the hospital, known as the "Winston property," in 1906. This house was later moved to Derry Street and in its place a modern and very attractive home for nurses was built in 1910-1911 and was named the "Forsyth-Hepburn Home" on account of money having been left for the purpose of securing a nurses' home by Mrs. Forsyth, whose maiden name was Hepburn.

In 1911-1912, the Isolation Hospital was built on hospital property. It is owned by the city and operated under hospital management.

Another big step was taken in 1914-1915 when the hospital building was once more enlarged and in every way improved. Several more semi-private and private rooms were added, some of the latter having their own bathrooms. In 1924 the operating rooms were enlarged and done over with all the latest equipment. At present there are two operating rooms and an anaesthetic room, also a splendid X-ray department, installed in 1921 through the efforts of the Red Cross Society, and was at first under the direction of Dr. W. A. Proud who was later succeeded by Dr. A. E. Broome.

In 1926 the X-ray department was extended and newer equipment added. During that year a Physio-Therapy department was installed. Owing to increasing demands on these departments a full-time Radiologist was appointed to have direction of the X-ray and Physio-Therapy departments with the assistance of a trained technician, Dr. L. C. Hacking, filled this position to the satisfaction of the medical staff from 1926 to 1937 when he resigned to assume a similar position in Regina, Sask.

In 1925 a by-law was passed by the City of Guelph giving a grant of \$45,000 toward the installation of a central heating plant and a refrigeration plant.

CHANGE OF MANAGEMENT

Owing to the increasing difficulty of meeting financial obligations and the consequent deterioration of the physical plant due to lack of revenue with which to keep buildings, grounds, etc., in repair, and to meet an ever-increasing demand for new, up-to-date equipment, the City of Guelph in 1930 took over the management of the hospital and assumed responsibility for its maintenance, thereby making of it a civic institution, supported by the taxpayers. The government of the hospital is vested in a Board of Commissioners appointed by the City Council and is composed of seven members which includes the mayor of the city who is on the board *ex-officio*. The appointments are made for a three-year term. Two members retire each year, but may be re-appointed.

The first Board of Commissioners appointed by the city: Dr. W. J. R. Fowler, chairman; Mayor R. B. Robson, *ex-officio*; Messrs. D. E. Kennedy; H. O. Howitt, M.D.; J. Curzon; Geo. L. Bush; Wm. Andrus (deceased). At the end of the first year, Mr. Kennedy retired to take his place on the city council.

In 1931, Mr. H. B. Higinbotham was appointed to the Board of Commissioners and was vice-chairman from that time until his death in 1937. Mr. Higinbotham gave freely of his time and ability as a business executive to hospital affairs. His passing came as a great shock not only to his associates on the Board of Directors and the hospital personnel, but to the whole community. To the nurses, he was a real friend and he manifested an interest in them and their affairs which will long be remembered.

During the past 8 years, many improvements involving a considerable outlay have been made. The installation of stokers in the power house, the building of cement driveway and walks, improvement to the grounds in well-kept lawns and shrubbery, all reflect the interest of the Board in the welfare of the hospital.

Owing to the great decrease of communicable diseases, the large building built for isolation purposes was very little occupied, one section only being used, and at certain seasons of the year the building was closed. With the consent of the public health authorities this building has been renovated and put in excellent condition and is now used in

In memory of
B. Sinner
 who for thirty six years was a
 faithful official of this institution
 Died July 22nd. 1922

IN MEMORY OF
James Cormack
 DIED. SEPTEMBER 28th 1907
 This Tablet
 IS ERECTED BY THE BOARD OF DIRECTORS
 IN A ACKNOWLEDGEMENT OF HIS LIBERALITY
 AND DEVOTION SHOWN TO THE INTERESTS OF
 THIS HOSPITAL

IN MEMORY OF
George Elliott
 WHO WAS
 CHAIRMAN OF THE BOARD OF DIRECTORS
 OF THIS HOSPITAL FROM DATE
 OF ITS INCEPTION UNTIL HIS DEATH.
 WAS A GENEROUS CONTRIBUTOR DURING HIS LIFE AND AT HIS
 DEATH LEFT A LIBERAL BEQUEST FOR THE BENEFIT OF THIS HOSPITAL.
 DIED 9th MAY 1895.

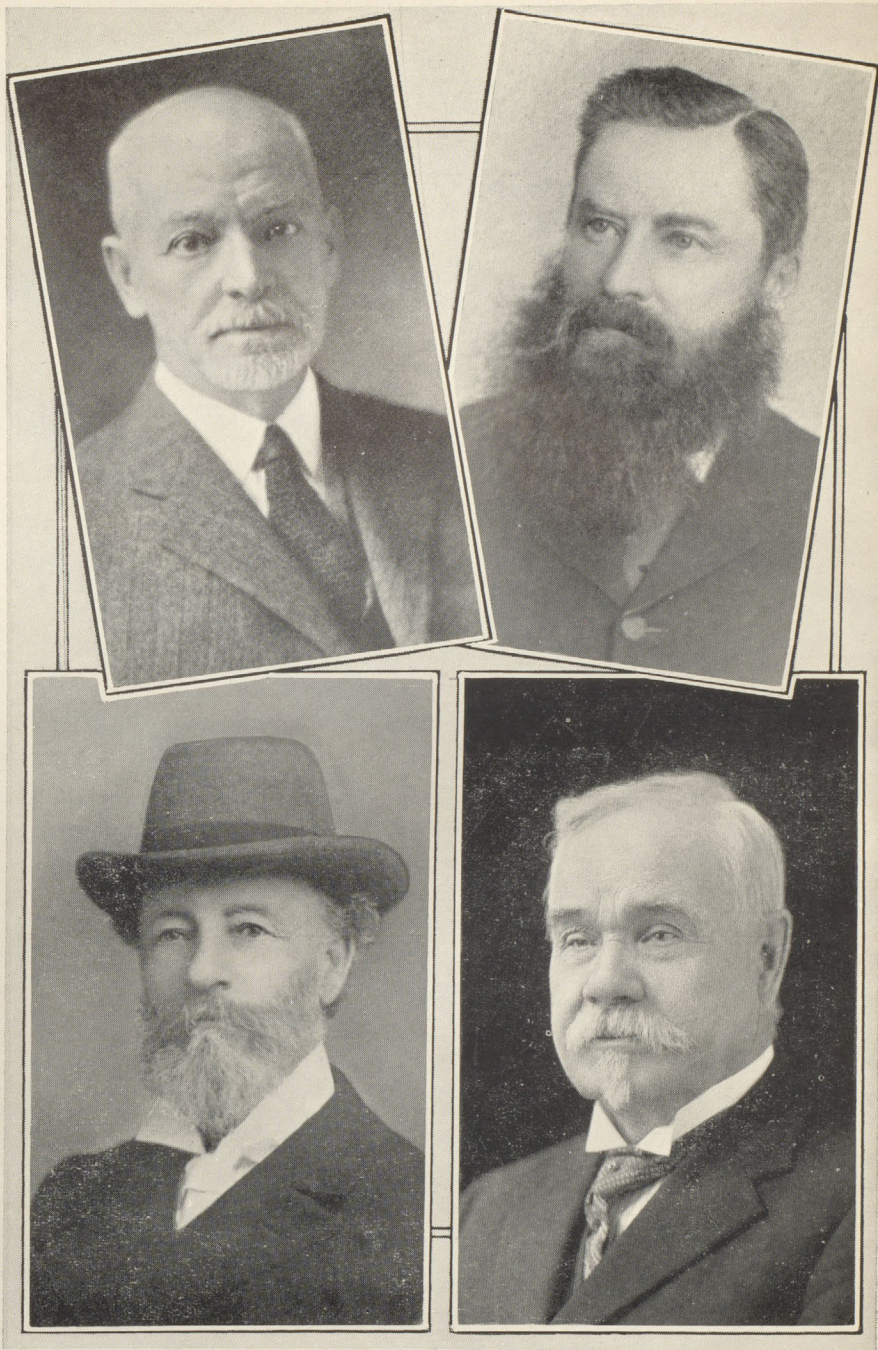
In Loving Remembrance of
The Nurses
 who died while giving their services during
 the Influenza Epidemic of 1918.

Pearl Calbot	Class 1910
Bella Mackenzie Huggill	Class 1913
Ella Ziegler	Class 1915
Marie Frances Aivy	Class 1918

ERECTED IN APPRECIATION OF
JOHN M. TAYLOR
 WHO FOR TWENTY-TWO YEARS
 DEVOTED HIS ENERGIES
 TOWARDS THE UPBUILDING AND
 WELFARE OF THIS HOSPITAL
 1908 - 1930

In memory of
A. W. Alexander
 who served on the Board as Director
 and Chairman for thirty-five years
 Died January 7th 1924

Memorial Tablets



The First Four Lecturers

Dr. H. Howitt

Dr. T. A. Keatinge

Dr. L. Brock

Dr. A. MacKinnon

part as an annex to the nurses' residence, as owing to increased activity in the hospital it has been necessary from time to time to augment the nursing staff. The west side on the main floor has been converted into a commodious, well lighted, finely-equipped class and lecture room, of which the nurses are very proud.

In the main building, a large room was set apart and very comfortably furnished for the exclusive use of the visiting medical staff.

In 1936 the Department of Radiology was completely replanned and up-to-date shock-proof equipment installed. This consists of a high-power tube rectified generator and a modern type of X-ray table with provision for fluoroscopy and radiography in all positions and a therapy tube for deep x-ray treatment. A shock-proof portable x-ray machine for use at the patient's bed-side or in the operating room was also installed at this time.

Through the generous bequest of the late Dr. Henry Howitt, the hospital was enabled to purchase a Howley Table which with the portable x-ray has given every possible aid to the surgeon in the reducing of fractures and the application of plaster splints, etc.

In the Physiotherapy Department new equipment is added from time to time to meet the demands of modern scientific medicine. This department provides:

Basal metabolism

High frequency apparatus for short wave and diathermy treatments

Ultra violet light—air and water cooled

Massage and manipulations

Radiant heat

Low frequency apparatus: Sinusoidal and Faradic and various combinations of these two currents

The x-ray and physiotherapy department is under the charge of a full-time radiologist assisted by a trained technician, and is a very important and active service. In 1937, on Dr. Hacking's resignation, Dr. P. T. Howell was appointed to the position and is giving every satisfaction to doctors and patients. The demands in this department are

growing rapidly, and it has proved a great boon to Guelph and the surrounding country.

In 1934 the main kitchens were entirely remodelled and fitted with terrazo floors and white tiled walls, and new equipment of stainless steel installed throughout. This very important part of the hospital is very well planned and splendidly equipped. In the nurses diet kitchen which adjoins the main kitchen, is an excellent laboratory table made of stainless steel and completely fitted up for the teaching of dietetics. This very fine piece of equipment was the gift of the Women's Hospital Aid. This organization has been actively engaged in work for the benefit of the hospital over a period of many years and is an organization to which the citizens of Guelph owe a debt of gratitude. Their generous and unselfish efforts throughout the years have been a great source of benefit to the hospital. In the early days of the hospital, they raised large sums of money which were devoted to the maintenance of the hospital, in linens, bedding, etc. Latterly some fine pieces of equipment are the result of their untiring efforts. Surgical dressing carriages, operating room equipment, diet kitchen furnishings, are only a few of the things contributed by this body of women.

INCREASING DEMANDS BRING CHANGES

Many changes have been made in the physical plant and the general set-up of hospital service with the passing of the years because of increased demands for more and better accommodation. Changes have been gradual.

The well-equipped operating room suite is situated on the top floor of the building and consists of two large operating rooms, both commanding a very wide view of the surrounding country. An anaesthetic room, supervisor's office, sterilizing room, nurses' work room, plaster splint room and doctors' suite are auxiliary to the operating rooms. This forms an entirely separate unit but is easily accessible to the rest of the hospital and the clinical laboratory.

The east half of the top floor is the obstetrical wing. The case-room, nursery, serving kitchen and patients' rooms (public, semi-private and private) are completely segregated from the other branches of nursing and are well adapted for their purpose.

The children's ward is situated on the main floor and, while limited to from eight to ten patients, is a large, cheerful, airy room with windows over-looking the hospital grounds.

The patients' rooms are comfortably furnished, large and well lighted but there has long been an insufficient number to supply the demand. At all seasons of the year, lack of a sufficient number of private rooms is a handicap and at certain times, from November until May, and usually during July, the situation is acute. Many patients, to our regret, have to seek hospitalization elsewhere.

The work done in the hospital is steadily growing from year to year. During the first year, the total number of patients cared for was fifty-six and during 1937, the record was 2,255 admissions with a total of 29,793 hospital days. These numbers would have been greater had space permitted. During the year past, over 1200 operations were performed. Guelph is very fortunate in having skillful, experienced surgeons. The x-ray department is increasing its activities month by month, a logical sequence to the installation of the very excellent new equipment under expert control.

The value of an organized dietary department, is well illustrated by the fact that during 1937, 3,016 therapeutic diets were prescribed and prepared. Diabetes Mellitus, heart and kidney diseases and many other disorders are yielding to the co-ordinated efforts of doctors, nurses and technicians, aided at all times by a loyal personnel. The clinical laboratory is widening its scope from year to year. New equipment is added as called for and the department is becoming an increasingly important feature in the hospital and is of great assistance to the doctors in making diagnoses, and of untold benefit to the patient.

BENEFACTORS

Throughout the years many organizations and individuals have, by gifts or bequests, given great financial assistance to the hospital. It is impossible to list those who have contributed generously, but it was largely through the generosity of individuals that the hospital was able to continue during certain periods.

School for Nurses

For the first thirteen years the nursing was done by a Graduate Staff and nursing assistants. Early in the year 1888—50 years ago—the School for Nurses was opened. Miss Louise Eastwood was Superintendent, with five nurses-in-training and two probationers. In July of that year, on the recommendation of the Medical Society, Dr. T. A. Keatinge, Dr. L. Brock, Dr. Angus MacKinnon and Dr. Henry Howitt were appointed lecturers to the nurses. On January 21st, 1889, the first examinations were held and two candidates, both of whom had been on the nursing staff prior to the establishment of the School passed with credit.

In the year 1896 the nursing course was lengthened from two to three years. In 1913 the School was incorporated, and ten years later, in 1923, was approved by the Provincial Association of Nurses. In 1906, the School was registered in the state of New York.

With the enlarging of the hospital from time to time to meet the growing needs of the community and to provide nursing service in keeping with the advance of Medical Science, came a demand for more nurses, so that for sometime past there has been a student body of from forty-five to fifty nurses.

In 1928 a full-time Instructress of Nurses was appointed, whose duties are primarily educational. In the same year fully qualified Registered Nurses were put in charge of the various departments whose responsibility is the systematic conduct of these departments and the supervision of the Student Nurses. The closer correlation of class-room instruction and nursing practise in the hospital results in a more efficient nursing service. Members of the Medical Staff give Courses of lectures to the students in the Sciences: Anatomy, Physiology, Bacteriology, Chemistry; and in Professional subjects: General Medicine, Communicable Diseases, Paediatrics, Dermatology, Tuberculosis, General and Orthopaedic Surgery, Gynaecology, Obstetrics, Eye, Ear, Nose and Throat, Mental Diseases and Public Health. One cannot estimate the great debt we and the citizens of Guelph owe to the doctors of this City for their continuous interest in the education of our students and the contributions made by them throughout the years to this end.

The School has at all times kept pace with the increased demands of the Profession. All graduates of the School are eligible to become

registered in the Province of Ontario after passing the prescribed examinations. All Graduate Nurses practising in the hospital are required to have Ontario Registration. Each student has three months intensive training in the Operating Room and three months in the Obstetrical Department; also nine weeks in the Diet Kitchen, which is well equipped for preparation of special diets and for the teaching of dietetics. A Course in Dietetics is given in the Junior year and Diet-therapy in the Intermediate or Senior year. This Department is in charge of a Graduate in Home Economics and is fully organized.

A course in Massage is given by the Physiotherapy Technician and a course in Laboratory Procedures by the Laboratory Technician. A course in Obstetrical Home Nursing is given by the Victorian Order and Public Health Nurses, which Course includes class room instruction followed by experience in the patients' homes.

EDUCATIONAL STANDARDS

ELECTIVE COURSE

In 1926 arrangements were made whereby our students might obtain by affiliation special training in the Prevention and Nursing Care of Tuberculosis as given in the Sanatorium at Weston. This is, at present, an elective Course. Several of the Graduates of the School have taken the Post-graduate Course, and have been retained on the permanent staff at Weston.

The educational standards of the School are becoming more clearly defined each year. The Canadian Nurses' Association, in paving the way for a Dominion Registration Act, is asking for Junior Matriculation as a minimum entrance requirement to the Schools of Nursing in Canada. On September 30th, 1937—the end of the hospital year—the educational standing of the students in this School was as follows: Senior Matriculation 12; Junior and part Senior 10; Junior 15; Normal Entrance 12. Since 1936 no candidates have been accepted with less than Junior Matriculation. The students are chosen with the greatest possible care. Equal consideration is given to educational standing, personality and executive ability, and the greatest of emphasis is laid on the importance of integrity and sincerity of purpose. She must also be well equipped physically, of good health and in sound physical condition, and is required to submit a certificate from her

family physician to that effect before entering the School. Before being accepted into the School, at the end of the probation period, each student has a complete physical examination by a member of the Guelph General Hospital Medical staff. This includes in all cases an X-ray examination of the chest. A close check-up is kept on the student's health throughout her training and health records which are checked monthly are filed in the permanent records of the School. Each nurse is again given a complete medical examination upon leaving the School. When students are ill they are cared for at the expense of the hospital for a reasonable time.

All nurses, upon graduation, identify themselves with the Alumnae Association, and with the Registered Nurses' Association of Ontario. The Guelph General Hospital Alumnae Association is quite a venerable institution coming into being in 1905, and was a fully organized body with a clearly defined constitution in 1909. The meetings are held monthly in the Nurses' Residence and are social and educational in character. The funds of the Association are raised by annual fees and by various social functions.

Since the organization of the School the number of nurses graduated (including the '38 Class) is 424. Many of the nurses have received positions of trust and responsibility elsewhere. Several were on active service over-seas during the Great War.

The consistent raising of educational standards for admission to the School, the soundness of the training, and the careful selection of students accepted, enables the nurses to enter any field of nursing which they may choose. Graduates of the School have taken graduate studies and have entered the field of Public Health Nursing, Victorian Order nursing, Administration and teaching in Schools for Nurses. Many have taken post-graduate work and are supervisors of hospital departments in various places.

The course of training covers a period of three years: Preliminary, Junior; Intermediate and Senior years.

The preliminary term is four months. This term gives time for class work and study as well as the practice of nursing and affords an opportunity for testing the aptitude, physical endurance, application and general fitness of the applicant. At the end of this period, work

and conduct being satisfactory, the student is accepted into the School.

The School is non-sectarian, but all students are required to attend morning and evening prayers; and time is given on Sunday to attend the place of worship they prefer.

EXAMINATIONS

Examinations are held at the end of the preliminary term and at the end of each Course of lectures. The standing of the student is based upon the standing and general character of her work and deportment throughout the year, together with the results of examinations. Students must pass in all subjects before receiving a diploma, and preliminary students must pass in all subjects before being accepted into the School.

The Diploma and Pin of the School will be awarded to those who have completed satisfactorily, the full term of training.

GRADUATION

The School of Nurses is indebted to the donors of the annual prizes so generously offered our students:

Graduating Class:

To the Board of Commissioners for the gold medal awarded in the senior year for highest standing in examinations, and the general proficiency gold medal.

To the Alumnae Association for the prize offered for obstetrical nursing.

To Dr. T. M. Savage for the prize given for operating-room technique.

To Dr. L. H. Leggett for the gold medal awarded for surgical nursing—practical and theoretical.

Under-graduates:

To the Women's Hospital Aid for general proficiency prizes offered in the first and second year's classes.

These annual prizes put on record the keen interest taken in the School and its advancement.

THE STAFF

At present the nursing staff consists of: 48 student nurses and graduate staff:

SUPERINTENDENT

S. Agnes Campbell, Reg. N.

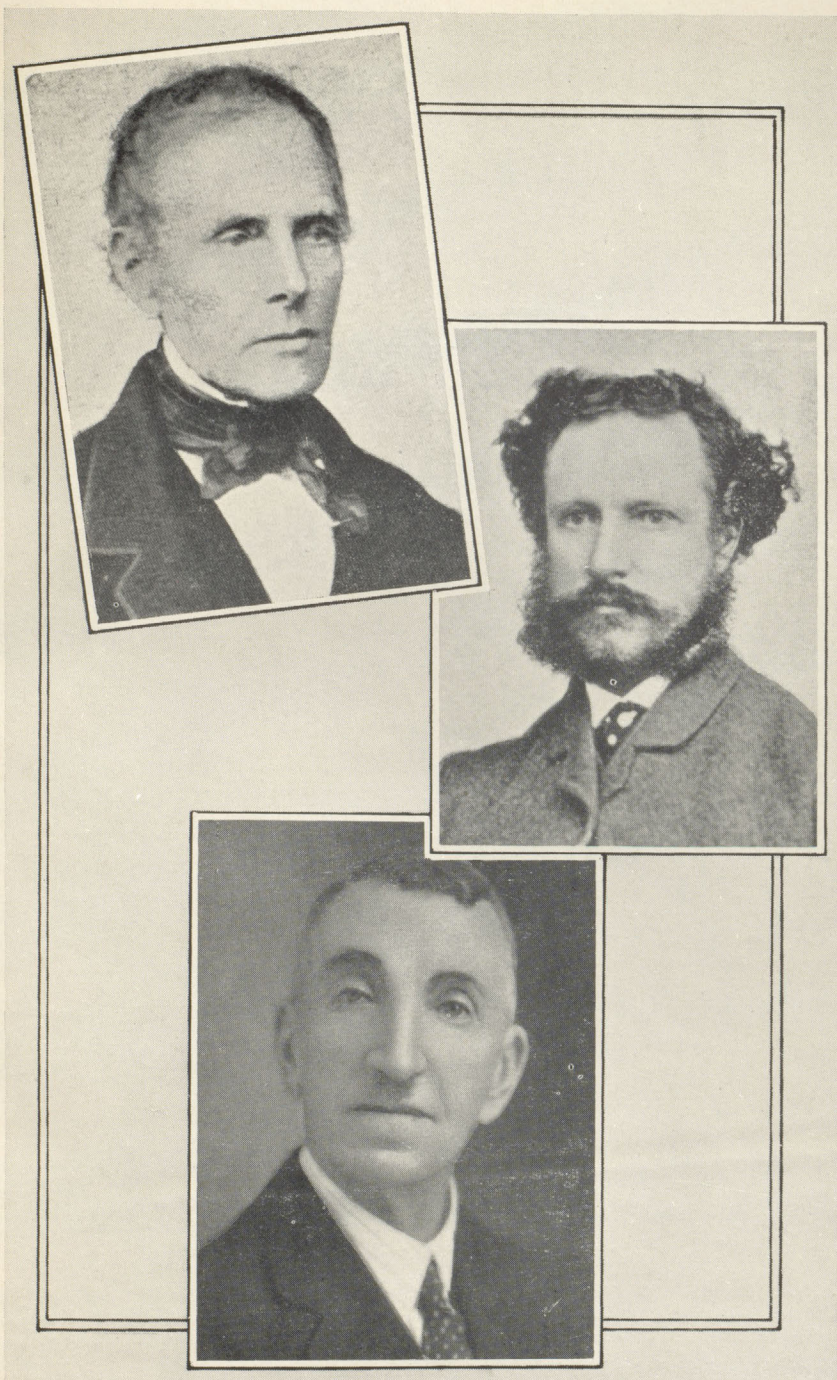
Ass't Superintendent - - E. M. Palliser, Reg. N.
Night Superintendent - - Mrs. J. M. Black, Reg. N.
Instructress of Nurses - - Miss E. W. Ewart, Reg. N.

SUPERVISORS

Obstetrical, Children's Ward - Miss N. K. Kenny, Reg. N.
Operating Room - - Miss M. Wood, Reg. N.
Medical and Surgical Wards - Miss E. M. Liphardt, Reg. N.
Laboratory Technician - - Miss L. Sinclair, Reg. N.

Dietitian - - - - Miss Vera Clark
X-ray and Physiotherapy Technician - Miss G. Beckett

Radiologist - - - - - Dr. P. T. Howell



Three Generations

Upper left—Dr. H. Orton, sr. (grandfather); centre—Dr. Henry Orton, jr. (father);
lower—Dr. T. H. Orton (son)



Graduating Class, Graduates and X-ray Staff

1. Helen Standing, 2. Lou Miller, 3. Thelma Cross, 4. Alice Dryden, 5. Marion Smith,
6. Helen Partridge, 7. Mary Lyon, 8. Alda Ruthven, 9. Jean Laidlaw, 10. Helen Hall
11. Isabel Firth, 12. Thelma Holmes, 13. Madeline Orr, 14. Kathleen Laird, 15. Harriet Lowry

Lower left—Miss G. Becket, Technician; Dr. P. Howell, Radiologist

Lower right—left to right—M. Wood, V. Clark, E. Ewart, N. Kenney, J. Black, L. Sinclair, E. Palliser, E. Liphardt



Student Nurses

Top—Intermediates

Centre—Probationers

Bottom—Juniors

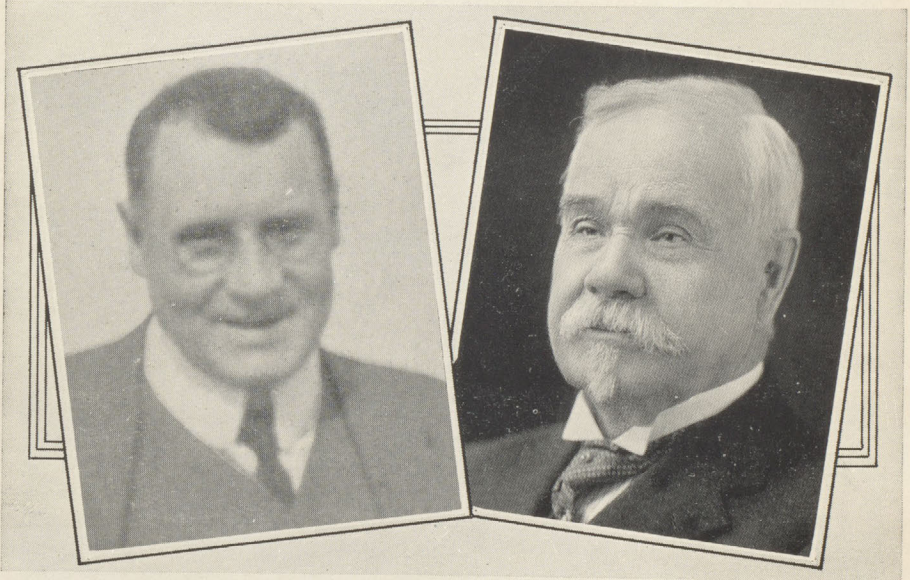


Three Generations

Florence Young 1907
Mrs. H. Cooke (deceased)

Lavina Burton 1888
Mrs. Johnstone

Margaret McNab 1931



Two Generations

Late Dr. Kenneth MacKinnon

Late Dr. Angus MacKinnon

LIST OF GRADUATE NURSES

- Burton, Vina
Mrs. Andrew Johnstone
- Young, Annie
- Duncan, Bella
Mrs. W. J. Dowker
- Young, Lizzie
Mrs. R. E. Peschel
- Barber, Mary
- Bird, Edith A.
Henderson, Elizabeth
- Douglas, Margaret
- Frew, Jean
- Rolston, Selina
- Trotter, Lizzie (*Deceased*)
- McGregor, Emily
- Aris, Augusta E.
- Anderson, Mary
- Coleman, Ada
- Field, Chrystia
- Allen, Margaret
- Anderson, Janet (*Deceased*)
- Borthwick, Margaret (*Deceased*)
Mrs. Dr. Elder
- Batho, Hattie
- Borden, Grace
Mrs. John Early
- Anderson, Carolyn
Mrs. Angus George
- Mitchell, Annie
Mrs. Colin Campbell
- Adcock, Minnie
- Armington, Allie
- Bushfield, Agnes
- Bussell, Bell
Mrs. J. M. Kains
- Ballantyne, Elizabeth (*Deceased*)
- Dyke, Susie
Mrs. Thos. Evans
- Fennell, Annie
Mrs. H. H. Perry
- Godkin, Maria
Mrs. Elliot
- Popham, Louisa
- McCallum, Margaret
- Winn, Lucy
Mrs. Geo. Lewis
- Walker, Olivia
- Laing, Kaniza
- Murray, Grace
- Turnbull, Jessie
Mrs. G. W. Robinson
- Wilson, Lillian
Mrs. Jas. Lockie
- Stirton, Etta
Mrs. Malcom MacVicar
- Tripp, Maria
- Natras, Maria (*Deceased*)
- Turnbull, Elizabeth
Mrs. H. G. Roberts
- Stork, H. P.
Mrs. Foley
- Wilkinson, Carrie
Mrs. Frank Armington
- Hipwell, Jane
Mrs. M. H. Loblaw
- Thompson, K. (*Deceased*)
Mrs. K. A. Dickinson
- Wilson, Etta (*Deceased*)

McLean, Annie
Mrs. Beachman
Moore, Annie
McCullough, Sarah
Mrs. Egbert Wheeler
Ransom, Alice
Mrs. Arthur McMillan

Engels, Charlotte
Bennett, Jane
Mrs. J. NewBigging

Adcock, Clara
Mrs. W. H. Gardiner
Crozier, Mary
Mrs. W. J. Abott
Leadley, Emma (*Deceased*)
Thompson, Julia
Mrs. W. D. Ross

Bond, Helen
Campbell, Emily
Mrs. W. J. Be
Gordon, Nellie (*Deceased*)
Mrs. A. A. Anderson
Gauld, Catharine
Mrs. W. A. Boyer
Graham, Edith
Mrs. Dr. Norman Johnson

Cowin, M. A. (*Deceased*)
Carleton, Etta
Mrs. W. C. Semple

Bessey, Clara
Grierson, Janet
Mrs. David McMillan
Kirkpatrick, Francis
Mrs. S. Ransom

Burling, Edith
Cannon, Ethel
Love, May D.
Mrs. Dayfoot

Taylor, Edith
Mrs. W. J. Whyte
Tye, Lila
Mrs. Robert Leslie
Willoughby, Ida

Walker, Margaret

Wilson, Edith (*Deceased*)
Mrs. Hackney
Watkins, Emma
Young, Bella
Mrs. E. W. Rodgers

McKnight, M. G. V.
Mrs. Colin McCrae
MacIntosh, Isabel (*Deceased*)
Neeve, Etta
Ross, Jessie
Turner, Annie
Mrs. J. J. Reid

Ford, Margaret

Leslie, Florence
Mrs. L. J. Roper
Stewart, Elizabeth (*Deceased*)
Stark, Alice S.

Watrous, Ida
Mrs. Rev. Ralph Craigmor

Bailey, Olive (*Deceased*)
Mrs. Dr. Whitchow

Caulfield, Annie
Mrs. Edwin Harris

Cunningham, Rebecca
Mrs. Louis Morenz

Gibson, Agnes

McMurray, Nellie

Brooking, Alice
Mrs. I. C. Preston

Caldwell, Annie (*Deceased*)

Grainger, Mabel (*Deceased*)

Kropf, Lavina
Mrs. K. A. Gerrard

Armstrong, Annie

Brown, J. J.

Philips, Nellie

Crabb, Mabel
Mrs. Frank J. W. Allison

Cordingley, Muriel (*Deceased*)
Mrs. W. Grant Leggett

Doyle, Annie
Mrs. G. A. Clark

Gwynne, Jessie
Mrs. Loggie

Eisle, Emily
Mrs. Alex Hutchins

Hussey, Edna
Mrs. J. W. McLeod

Hedge Alice,
Mrs. Arkell

Lyons, Elizabeth
Mrs. R. W. Gladstone

Arkell, Catharine
Mrs. A. C. Nortrop

Beck, Ella M. (*Deceased*)
Mrs. Gordon Peterson

Ferguson, L.

Griffin, Olive (*Deceased*)
Mrs. Dr. N. Kyle

Haggart, Jean
Mrs. Jean Davidson

Mailand, Ella
Mrs. Fred Hendley

Paton, Isobel
Mrs. T. P. Crutcher

Prosser, Beatrice

Robertson, Irene

Young, Florence (*Deceased*)
Mrs. Heber Cook

King, Francis
Mrs. Rev. Wallace Allison

Millar, Bessie

Richardson, Elizabeth

Richardson, Miriam

Patterson, Marion

Hanna, Myrtle

Liphardt, Emma

Mitchell, Edna
Mrs. Norman Wright

Talbot, Pearl (*Deceased*)

Taylor, Helen
Mrs. Dr. R. J. McEwen

Clendenning, Gertrude
Mrs. W. Ross

Galloway, Reba

Gordon, C. Mary
Mrs. Cummins

Hopkins, Louise

Holmes, K.
Mrs. Katharine Inglis

Irving, Nancy

Wilson, Ida
Mrs. Wm. Buchan

Herrlick, Hazel
Mrs. Hugh C. McLean

Inglis, Elizabeth
Mrs. Baldwin

Moore, Annie

May, Amy
Mrs. Bert Newstead

McEachern, Florence
Mrs. Dawson

Robertson, Mary
Mrs. Harry Pettit

Steele, Ethel

Stelck, M. B.

Armstrong, Ethel

Sunley, Mary E.

Orpen, Mabel M.

Mrs. A. R. Hockin

Pfaff, Mildred

Mrs. Robt. Wilson

Lyons, Ella

Black, Marie

Mrs. Archie Adair

Benson, Etta

Mrs. Harvey Moffatt

Howe, Myrtle

Mrs. Dr. A. B. Cooke

Willoughby, Cassie

Mrs. Donald McKinnon

Livingstone, S. S.

Bayne, Emma (*Deceased*)

Mrs. Robinson

Essery, Pauline

Mrs. Gerald Thomas

Philp, Estelle

Mrs. Dr. Harry

Grant, Margaret

Mrs. John Steele

Roddy, Myrtle

Mrs. Howard Kerr

Renton, Eleanor

Mrs. Swantiland

Simpson, Mary

Rixon, Dorothy

Mrs. Stephen Gapp

Agnew, Georgina

Kenney, Nora

Ryde, Victoria

Mrs. Currie

Awty, Marie (*Deceased*)

Small, Grace

Truesdale, Alice (*Deceased*)

Grieve, Eva D.

Gillespie, Priscilla

Kiteley, Estelle

Mrs. G. Coyne

Watt, Mary G.

McKenzie, Nellie (*Deceased*)

Mrs. Ernest Hugill

Shaw, Mrs. A. M. (*Deceased*)

Morton, Anne

Henry, Ann

Robertson, Jessie

Mrs. Raymond Zavitz

Demmon, Margaret

Mrs. Gallagher

Cross, M. Hope

Mrs. F. R. Sparks

Schaub, Eileen

Zeigler, Ella (*Deceased*)

Donellan, Esther

Snow, Florence B.

Mrs. Ray Thompson

Featherstone, Margaret

Mrs. W. L. Sager

Montgomery, Marguerite

Strong, Mina

Mrs. Orr

Tolton, Maude

Frizzell, Margaret (*Deceased*)

Mrs. Alden Johns

Cunningham, Ethel

Mrs. Hefkey

Irwin, Margaret E.

Mrs. Ken. Agnew

Pierson, Josephine

Speers, R. H.
Mrs. W. J. Fairweather

Eby, Ethel

Mann, Francis B.

Mrs. Bradley

Taylor, Hazel

Mrs. Robert Sinclair

Smith, Mary E.

Mrs. W. Pearce

Fennell, Anna

Sugden, Mary G.

Mrs. Charles Bremner

McPhail, Eva

Mrs. Wright

McPherson, Mary

Mrs. A. B. Lyon

Young, Hazel

Mrs. Otto Eberlin

Anderson, Clare (*Deceased*)

Duckworth, Annie (*Deceased*)

McKee, Alice

Cross, Annie B.

Mrs. Chas. Ogg

Urie, Mabel

Schaefer, Adeline L.

Mrs. Michael

Clark, Margaret

Partridge, Maud

Mrs. Dr. L. King

Weir, Margery

Mrs. Dr. McMaster

Broughton, Elizabeth M.

Mrs. Dr. N. Burrows

Broughton, Helen L.

Sprowl, Laura M.

Henderson, Annie

Mrs. G. Smith

Lane, Ina May

Mrs. A. R. Saaf

Stockford, Emily

Gallagher, Nellie

Bowen, Mabel A.

Mrs. J. C. Swancar

Wilhelm, Margaret L.

Mrs. Leslie MacDonald

Craik, Katharine

McLean, Winnifred

McCullough, Ethel

Mrs. W. J. Telford

Fraser, Ella

Fleming, Alma

Lawson, Miriam

Montgomery, Robina

Broughton, Mabel

Mrs. Harold Smith

McNeill, Katie

Mrs. Gordon Knetchel

McManus, Annie

Mrs. Wm. Watson

Anderson, Bessie

Mrs. Dr. Taylor

Cummer, Cora

Mendell, Nora

Mrs. Rupay

Morris, Bertha

Quinn, De Etta

Wenger, Mary (*Deceased*)

McKenzie, Louise

Nixon, Mary

Mrs. Soules

McDonald, S. Pearl

Mrs. Donald Hammond

Beam, Hilda

Mrs. Ralph Griffith

Eidt, Vera

Sparling, Elsie J.

Hough, Lillian

Leitch, Ella P.

Mrs. J. A. McLean

- McGillivray, Alma J.
Mrs. Gordon Alexander
- Mighton, Lyla V.
Mrs. Parker Smeltzer
- Simpson, Marjorie
- McPhail, Catharine
Mrs. John L. George
- Mendell, Orpha L. (*Deceased*)
- Cook, Nellie J.
Mrs. Dr. David W. Whaley
- Fletcher, Mamie J.
- Trask, Ida (*Deceased*)
Mrs. Wm. Gray
- Litt, Elfreda
- Johnson, Hazel
Mrs. Geo. Eby
- McCrea, L. Jean
Mrs. Earl Anderson
- Fasken, Gladys
Mrs. Russell Bard
- Rogers, Jessie L.
Mrs. Millar
- McDonald, Katharine
- Barron, Henrietta
Mrs. Geo. Beehoo
- Featherstone, Lauranette
- Kilpatrick, Francis
Mrs. Ed. Parsons
- McDuff, Florence
Mrs. Dr. Carr Harris
- Plowright, Alice M.
- Roelofson, Helen
- Drysdale, Cissy
- Walker, Thelma
- Kiel, Alice
Mrs. Louis Bald
- Humphrey, Florence
Mrs. Rev. John Thompson
- Pinkney, Edna
Mrs. Tom Peacock
- Garner, Mary H.
Mrs. Jas. R. Allan
- Dennis, Hazel E.
- Clark, Eileen G.
- Stewart, Mae
Mrs. Howard Bolton
- Albrecht, Norma
Mrs. Leslie Morrill
- Boyd, Mabel
Mrs. Chas. Wood
- McCrae, Katharine
- Brandy, Helen
Mrs. James O. Wilson
- Blair, Merle
- Stewart, Julia Etta
- MacDonald, Beatrice
Mrs. Stanley Hamilton
- Scales, Susie
- Paddison, Neola
Mrs. Clayton Jackson
- Hill, Mabel
Mrs. Hap Emms
- Prong, Maud (*Deceased*)
Mrs. Ralph Curzon
- Benham, Emma
Mrs. Bert Bartlett
- Penfold, Clara
- Milloy, Ada
- Tolton, Helen (*Deceased*)
- Anderson, Vera
Mrs. Crompton
- Smith, Margaret
Mrs. L. McNally
- Young, Olive
Mrs. Adolph Kolling
- Jones, Ethel B.
Mrs. Bert Lindo
- Clark, Mary
Mrs. E. Gray
- Hewitt, Margaret

Reid, Bernice
Jones, Ethel F.
Pringle, Isabel
Badke, Gertrude
Singer, Marguerite

McNiven, Isabelle

Cunningham, Mabel
Mrs. Ernest Hope
Thomas, M. Gertrude
Mrs. Chas. Powell
Reid, Ariel
Mrs. Lloyd Jackson
Dennis, Edena
Mrs. Elmer McCannell
Wood, E. Marion
Zeigler, Clara

Darby, Mary
Wilson, Isobel
Mrs. Lindsay Mercer
Lambert, Dora
Dyer, Amelia
Popplestone, Jeanette
Mrs. Dr. C. D. Kilpatrick
Fletcher, Dorothy
Mrs. George Whitehead
Henderson, Isabel

McNab, Margaret
Wood, Olive M.
Mrs. Clyde Scarrow
Pass, Helen F. (*Deceased*)
Stephenson, Alice
Cleghorn, Katharine
Chapman, Lyla J.
Mrs. Harold Jackson
Andrews, Ethel G.
Mrs. Herbert Ritchie

Creighton, May
Mrs. Walter Hylands
Diamond, Bessie
Inglis, Inez
Mrs. Walton Benham
Watson, Jeannette

McFarlane, Mary T.
Mrs. Walter Gordon

Powell, Ruth
Mrs. Arthur Hatch
Black, Lois
Winfield, Eva J.
Norrish, Mildred
Crozier, C. Jean
Mrs. Archie Service
Coker, Jeanette
Mrs. G. Black

Kilpatrick, Janet
Storey, Beatrice
Cockburn, Annie
Pearce, Isabel
Mrs. Gordon Hopper
Laidlaw, Katie
Mrs. Harvey Zeigler
Dedells, Florence
Mrs. Howard Kurtz

Moffatt, Olga H.
Thomas, Marguerite
Mrs. Archie G. Theaker
Bentley, K. Ena
Mrs. Jas. Boyd
Hall, Minnie
Hardy, Clara
Mrs. Dr. C. D. Heggie

- Hay, Jean E.
Mrs. Fred Stafford
- Brown, M. Hazel
Mrs. Ivor Foyl
- Forsythe, Vera Jean
Mrs. C. A. Gordon
- Elliott, Ena
Mrs. Nelson Couling
- Stephens, Margaret E.
Mrs. Clifford Wrigglesworth
- Schumann, Emma
- Brydon, Helen
- Howard, Evelyn
Mrs. Robt. Brydon
- Archibald, Margaret
Mrs. Jack Gardiner
- McIntosh, Marjorie
- Till, Margaret
Mrs. A. Kelly
- Boyd, Ethelyn
Mrs. A. L. Geffert
- Mallett, Francis
- Rowland, Phyllis
Mrs. John Orns
- Threndyle, Mary
Mrs. Jas. Grant
- Dent, Margaret
- Fletcher, Margaret
Mrs. Jas. Ling
- Lantz, Isabel
Mrs. Ray Gordon
- Todd, Helen L.
- Metcalfe, Elva
- Bryan, Lillian
- Shaw, Rose E.
- Pollock, Dorothy A.
- Henry, Marion
- Graham, Mary H.
- McBean, A. Jean
- Hall, Katharine E.
- Kennedy, Margaret K.
- Dent, Annie
Mrs. Wm. Kelso
- Pfohl, Florence C.
- Stark, Mary I.
- Wanless, Ella F.
- Thom, Margaret
Mrs. Campbell Thompson
- Whitmee, Daisy W.
- Cartwright, E.
- Green, Isabel
Mrs. Jim Perry
- Gladstone, Ruth
- McLean, Leone
Mrs. J. Scott
- Irwin, Louise
- Cook, Ethel
- McCuen, Ruby
- Frosch, Evelyn
- Sinclair, Loreen
- Grael, Mildred
- Pemberton, Peggy
- Kitching, Helen
Mrs. Roy Paddison
- Roszell, Anna
Mrs. Howard Rokeby-Thomas
- Caldwell, Bernice
Mrs. L. A. Fisher
- McKinnon, Mary
Mrs. Roy McConnell
- Muir, Margaret
- Hollinger, Helen
- Myles, Edith
- Laurens, Esther E.
- Yeager, Iona
- Scott, Cora
Mrs. Osborne
- Patterson, Fleda
- Phelps, Nina
Mrs. Roy E. Ridley



Two Generations

Late Dr. Henry Howitt

Dr. H. O. Howitt



Two Generations

Late Dr. W. F. Savage

Dr. T. M. Savage

Armstrong, Annie
Anderson, Carolyn
Lunau, Evelyn
Lush, Florence
Ray, Isabelle
Alpaugh, Beatrice
Cunningham, Helen

Cross, Thelma

Miller, Lulu
Partridge, Helen
Smith, Marion
Standing, Helen
Firth, Isobel
Hall, Helen
Holmes, Thelma

King, Donalda
Reid, Laura
 Mrs. John Woodcock
Thompson, Charlotte
Upward, Mary
Wood, Elva
Hamilton, Emma

Dryden, Alice

Laidlaw, Jean
Laird, Kathleen
Lowrie, Harriet
Lyons, Mary
Orr, Madeline
Ruthven, Alda

The Alumnae Association

The Alumnae Association of the Guelph General Hospital has for many years been a source of mutual help and pleasure to its members, but, although the association was organized over 30 years ago, no records are available to show its activities for the first few years of its existence. However, one need only peruse the secretaries' reports of the tasks accomplished since August 31, 1910, to learn that it has more than proven its worth to the graduate nurses, and the community at large, by its public-spirited attitude and keen interest in all matters pertaining to the nursing profession.

Searching through early records, one finds that the graduate nurses' registry was, previous to 1911 (and also for some time following, when set rules had to be adopted), looked after by one of the local down-town druggists. Later, when it was thought to be a more satisfactory plan, this was transferred to the office of the hospital, where it remains to the present day, carrying a much longer list of graduates, it is true, but still carrying some of the original obligations.

The monthly meetings throughout the years have been mostly under the educational, business and social headings, and the varied number of addresses by different members of the medical profession, as well as talks by representatives of many civil and professional organizations, have been of vast benefit, while the business and social element have also filled a great need and, through it, the association has been able to do considerable entertaining—at the same time having purchased much of its own equipment, such as silver, linen, china, bridge tables, etc., to be used on such occasions, aside from which the treasurer was able to put into a special fund a substantial sum with which to purchase debentures, and this is to be used as a Graduate Nurses' Loan Fund. This may be loaned to nurses wishing to take post-graduate work, providing they are graduates of the Guelph General Hospital, and members in good standing of the Alumnae Association. Originally this was a scholarship fund, but with the changing of conditions it was felt that a loan fund would be of greater benefit.

In November, 1914, at the suggestion of Miss Frew, the members began Red Cross work, and since that time have consistently helped materially with the work of that organization—with its western relief

and flood sufferers' relief work during more recent years, as well as other worthy enterprises, such as the Russian Relief, furnishing a room in the Y. W. C. A., Children's Aid Society, V. O. N. work, Canadian Institute for the Blind, Nurses' Permanent Education Fund, Florence Nightingale Memorial Fund, McGill School of Nursing and, in Public Health work. Special efforts were made to raise funds to pay for milk for underprivileged children in the community.

In 1919 a contribution was made towards a tablet in memory of nurses who had died during the flu epidemic in 1918, and this was subsequently erected and unveiled in the front hall of the hospital. It was also shortly after this time that the Association honored Dr. Sinner, who had served the hospital so faithfully for many years, by paying for the perpetual care of his mother's grave.

Previous to the year 1913, the members had furnished a room in the hospital which was to be used by nurses when ill, and had added articles of furniture, etc., from time to time, but, since that year, they have been able through many evenings of bridge, dances, teas and other activities, to raise funds for special donations to the hospital itself, endeavouring in this way to help keep the equipment up-to-date, and also to enable the doctors and nurses to carry out their treatments more efficiently. The two largest donations included a water-sterilizer for the service room and a new "Mary Chase" for the class room. For the use of the graduates themselves, a dressing-room in the basement of the hospital was furnished with lockers, chairs, mirrors, etc.

One of the annual events to which members always look forward is the spring banquet for the graduating class, and this proves to be a re-union of the older members, as well as an opportunity to greet the new members-to-be. Since November, 1910, (and possibly in previous years) at time of graduation, it has been the custom of the Alumnae Association to present a prize to the nurse graduating with highest honors. The first prize so presented, of which record was kept, was given to Miss Annie Armstrong, in 1910, for highest marks in Guelph General Hospital examinations, but the Board of Directors, for some years now, has presented this annual prize for theory. The Alumnae Association prize is now presented specifically for proficiency in obstetrical nursing.

With still greater things in view, the Association carries on, hoping in future years to follow with ever steadier and more faithful tread in the path of those who have been responsible for the work accomplished since the time of its inception.

It is fitting to pay tribute here to the graduates who have passed on to their reward.

Those who have held office in the Alumnae Association:

PRESIDENTS—Miss J. J. Frew, Miss Janet Anderson, Miss Annie Armstrong, Mrs. Margaret Douglas, Miss Annie G. Moore, Miss Emily Eisle, Mrs. A. R. Hockin, Miss C. Ziegler, Miss K. Cleg-horn, Miss E. Eby, Miss L. Ferguson.

SECRETARY—Miss Margaret Walker, Miss Bessie Millar, Miss E. M. Richardson, Miss L. Kropf, Miss L. M. Hopkings, Miss I. Watrous, Mrs. A. A. Anderson, Miss M. Simpson, Miss A. Fennell, Miss J. Pierson, Miss N. Kenney, Miss L. Sinclair.

TREASURER—Miss Margaret Walker, Miss Bessie Millar, Miss I. Watrous, Mrs. A. A. Anderson, Miss J. Watson, Miss M. Wood.



Miss L. Ferguson
Pres. Alumnae Ass'n



Late Mr. B. Sinner
Steward, Dispenser,
etc. 1881-1921



Mrs. Jane C. Budd
First President of
Women's Hospital Aid



Miss E. Wilma Grierson
Sec'y-Treas. Board of Commis-
sioners, 1915-



The Office Staff

Mrs. C. Watson, Miss E. Wilma Grierson, Miss Isabel Grieve



In Charge of Stores and Housekeeping



Engineers, Electrician, Painter, Carpenter, etc.

The Women's Aid

Women's Hospital Aids Association of Ontario Motto

"We do not want to run Hospitals. We want to make it easier for Hospital Boards and Superintendents to do so."

The Women's Aid of the Guelph General Hospital was formed in 1897 by Mrs. Jane C. Budd, who became its first president. The Guelph Aid became affiliated with the Women's Hospital Aids Association of Ontario at its inception in 1910.

The members of the Aid undertook the task of canvassing the city each year to collect money with which to supply linens for the hospital. The goods were purchased and the material cut out by members of the Aid who then attended to having the different articles made. These consisted of sheets, pillow slips, bed gowns, doctor's gowns and other things too numerous to mention. This practice was carried on until the hospital was taken over by the city in 1930.

The Aid has since been raising money by holding rummage sales, bridges, teas and home-made baking sales. The money so raised has gone into the purchasing of many pieces of equipment for the hospital thus aiding suffering humanity. In this manner the good work started by Mrs. Budd and her little band of workers is still bearing good fruit, forty-one years later.

The Guelph Aid has two charter members on its roll, viz., Mrs. Edmund Harvey and Miss Kate Till

Miss Till was made a Life Member of the Women's Hospital Aids Association of Ontario in 1935, their jubilee year, in honor of her long and faithful service. This membership is given for service only, money cannot buy it. Miss Till was secretary-treasurer for twenty-nine years, then treasurer and afterwards president of this Association.

The next longest in point of service was Mrs. R. Lucy who was president for nineteen years.

Active officers since inception are:

Presidents—Mrs. Jane C. Budd, Mrs. G. Jeffrey, Mrs. G. B. Ryan, Mrs. R. Lucy, Miss Jean Congalton, Miss K. Till, Mrs. W. Walker

Treasurers—Miss K. Till, Mrs. R. Lucy, Mrs. J. P. MacKinnon, Mrs. R. R. Dodds

Secretaries—Miss K. Till, Mrs. C. E. Hewer, Mrs. H. C. Allen



Cook and Maids



The Laundry Staff



Orderlies



The Farmers and their Herd

GREETINGS FROM MEDICAL STAFF

The Training School of the Guelph General Hospital was inaugurated in 1888 owing to the efforts of the late Doctors Henry Howitt, Angus MacKinnon, L. Brock and T. A. Keatinge. These men were largely responsible for the lectures to the nurses. Since that time the medical staff has increased greatly and their work in lecturing has therefore become less arduous. Many nurses have graduated and have gone out to carry on their chosen work, spreading the good name of the training school wherever they go.

The splendid work of the graduates has always been pleasing to the medical staff who extend to them all their best wishes for their continued success and that of the training school.

In Memoriam

DR. HENRY ORTON	DR. GERALD O'REILLY
DR. T. P. PARKER	DR. R. LUCY
DR. THOMAS ORTON	DR. KENNETH MacKINNON
DR. RICHARD ORTON	DR. W. J. ROBINSON
DR. JOHN HOWITT	DR. J. P. KIRBY
DR. S. V. KEATING	DR. PETER STUART
DR. MacGUIRE	DR. ANGUS MacKINNON
DR. NUNAN	DR. JAMES LINDSAY
DR. G. SAMUEL HEROD	DR. J. A. WILSON
DR. CORMACK	DR. W. O. STEWART
DR. TAMBLYN	DR. FRANK WALSH
DR. L. BROCK	DR. W. F. SAVAGE
DR. W. B. KENNEDY	DR. C. C. TATHAM
DR. H. G. ROBERTS	DR. ALLAN GIBSON
DR. W. H. LOWRY	DR. HENRY HOWITT

2633158

