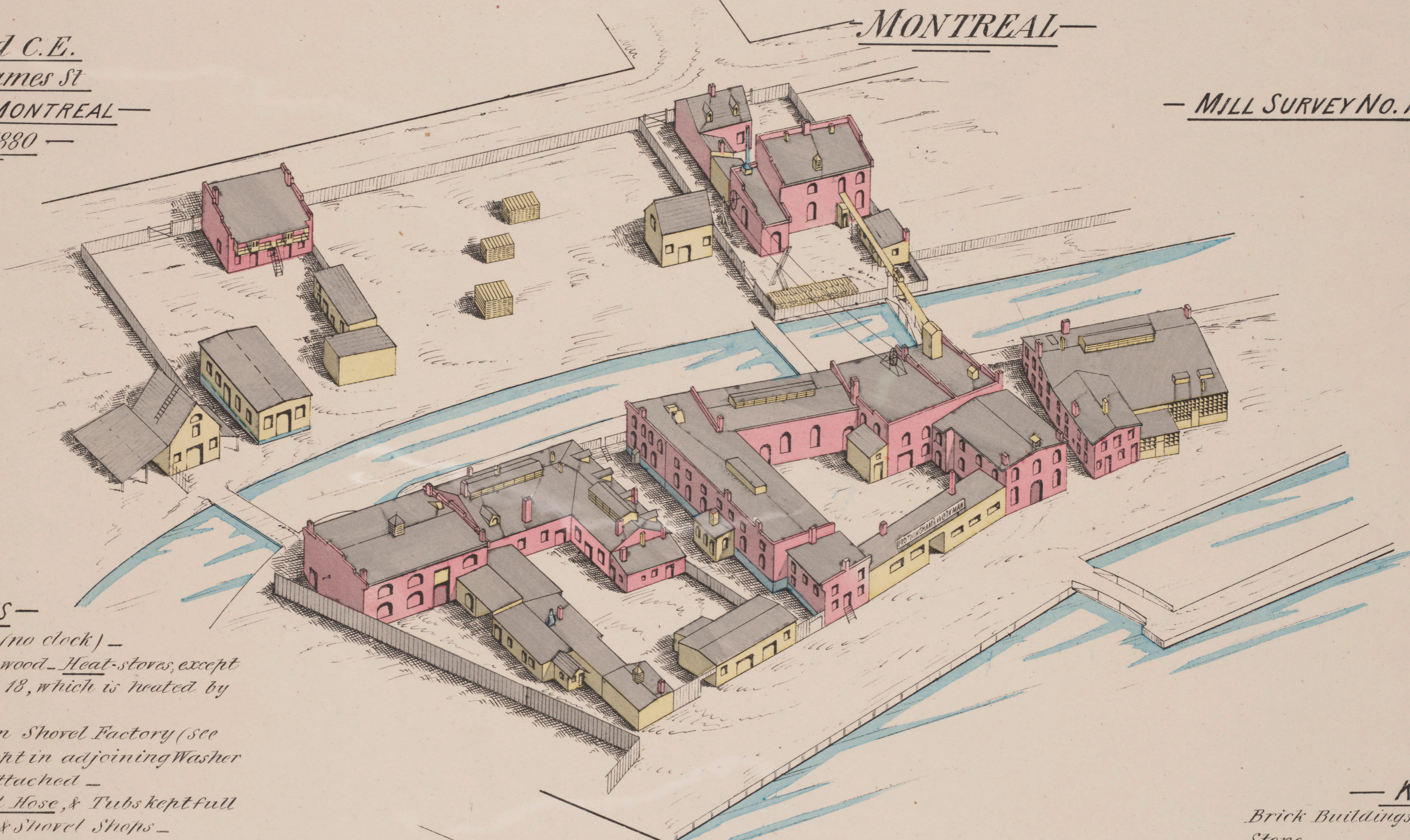


INSURANCE PLAN — of — MANUFACTURING PREMISES — Property — of — THE ESTATE JOHN FROTHINGHAM on Lachine Canal — Cote St. Paul —

Chas. E. Goad C.E.
162 St. James St
— MONTREAL —
— June 1880 —

— MILL SURVEY NO. 15. —

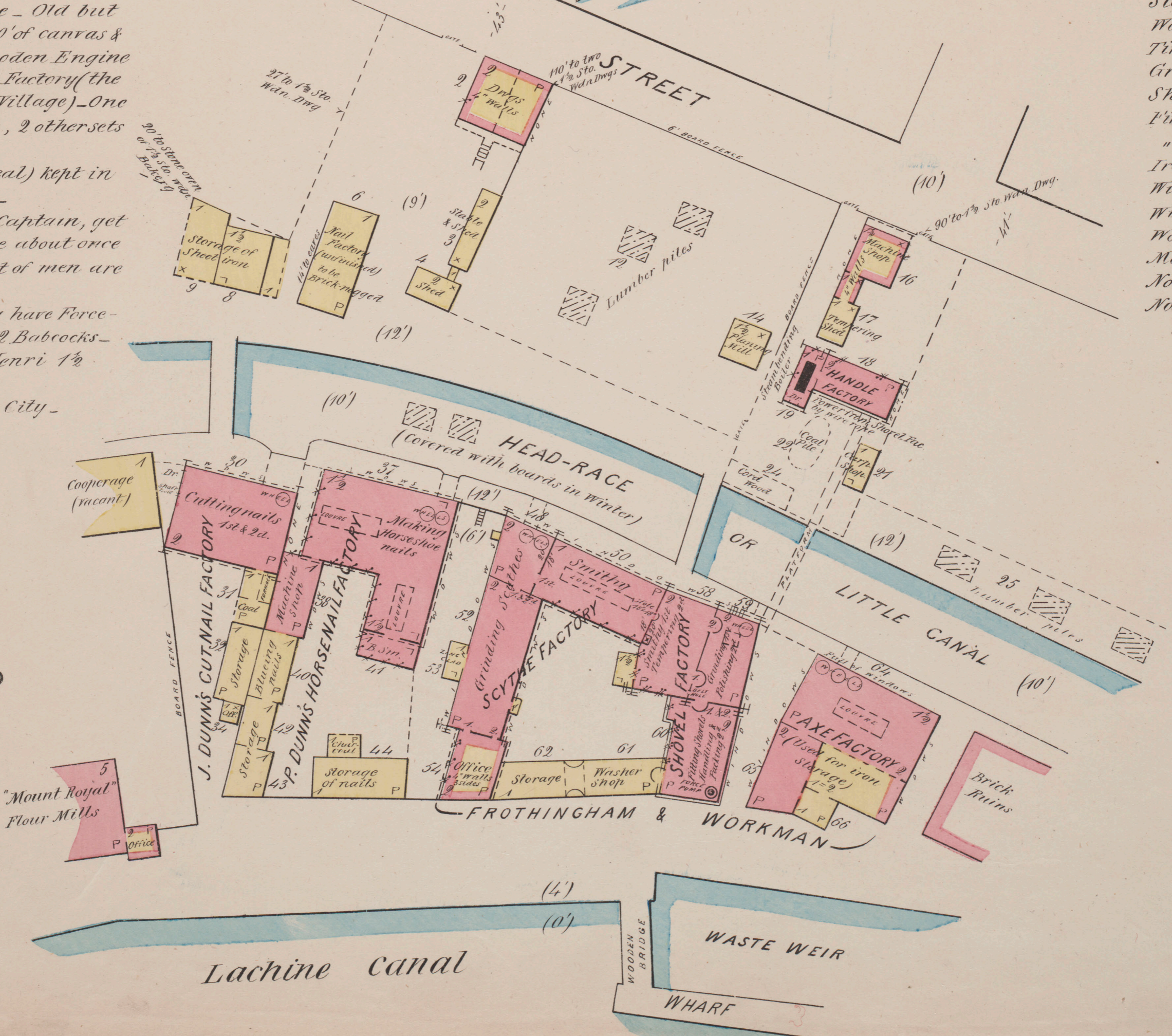


— REMARKS —

- 20 Hands — Watchman (no clock) —
- Power Water — Fuel — coal & wood — Heat — stoves, except in Handle Shop No. 18, which is heated by steam —
- Water power Force pumps in Shovel Factory (see Plan) 50' of Hose kept in adjoining Washer Shop, ready to be attached —
- Several lengths of small Hose, & Tubs kept full of water, in Scythe & Shovel Shops —
- Hand Fire Engine — English make — Old but kept in good repair, and 500' of canvas & 300' of leather Hose, kept at wooden Engine house about 200' West of Axe Factory (the joint property of Company & Village) — One set of Ladders in same house, 2 others sets in Village —
- Small Hand Engine (Perry Montreal) kept in Shed No. 21, near Handle Shop —
- Village Fire Company of 30 men & Captain, get uniform but no pay — Practise about once a month — Captain and most of men are in Company's employ —
- "Mount Royal Flour Mills" adjoining have Force Pump, Hose on each floor & 12 Babcocks —
- Nearest Steam Fire Engine at St. Henri 1 1/2 mile distant —
- Telegraph & Telephone in Office to City —

— KEY —

- Brick Buildings are Colored Red
- Stone " " " " Blue
- Wooden " " " " Yellow
- Tin or metal roof - - - - - 7
- Gravel - - - - - P
- Shingles - - - - - X
- Fire Wall 1' above roof [Symbol]
- " " 2' " " [Symbol]
- Iron door [Symbol]
- Window 1st floor [Symbol]
- Windows 1st & 2d [Symbol]
- Wooden Cornice [Symbol]
- Metal " [Symbol]
- Nos on buildings are Stories
- Nos in brackets (10') are heights above level of Canal



SCALE 50 FT TO ONE INCH
0 50 100 150