

Premises of MONTREAL ABATTOIR Co

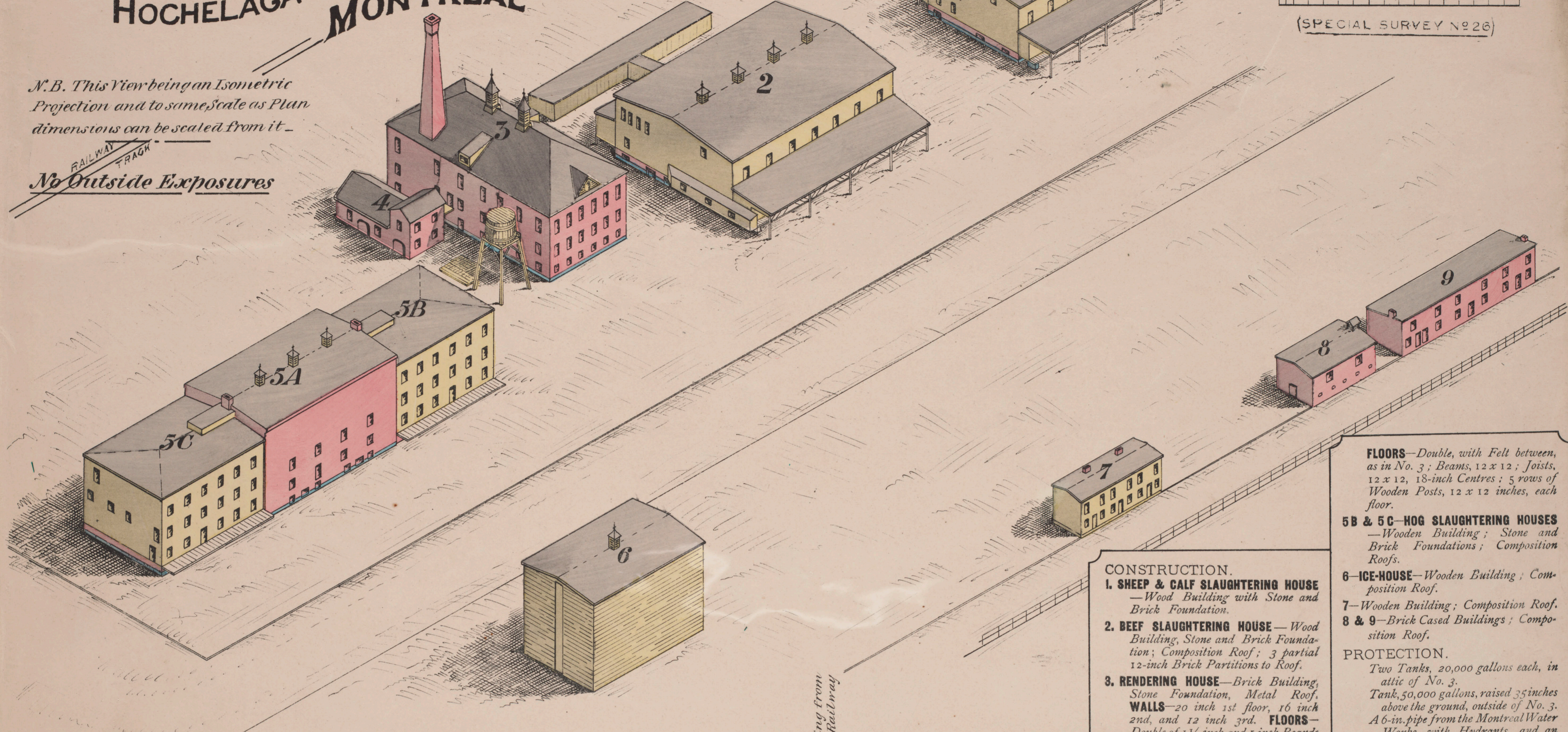
HOCHELAGA MONTREAL

SIDING FROM
Q.M.O. & O. RAILWAY

CHAS. E. GOAD C.E. MONTREAL.
— MAY 1881 —
— SCALE 50 FT. = 1 INCH —
(SPECIAL SURVEY No 26)

N.B. This View being an Isometric
Projection and to same Scale as Plan
dimensions can be scaled from it.

No Outside Exposures



— KEY —
Brick Buildings colored Red
Stone " " Blue
Wood " " Yellow
Composition roof — P
Metal " " — 7
Wooden Cornice — —

FLOORS—Double, with Felt between, as in No. 3; Beams, 12 x 12; Joists, 12 x 12, 18-inch Centres; 5 rows of Wooden Posts, 12 x 12 inches, each floor.

5B & 5C—HOG SLAUGHTERING HOUSES—Wooden Building; Stone and Brick Foundations; Composition Roofs.

6—ICE-HOUSE—Wooden Building; Composition Roof.

7—Wooden Building; Composition Roof.

8 & 9—Brick Cased Buildings; Composition Roof.

PROTECTION.
Two Tanks, 20,000 gallons each, in attic of No. 3.
Tank, 50,000 gallons, raised 35 inches above the ground, outside of No. 3.
A 6-in. pipe from the Montreal Water Works, with Hydrants, and an efficient system of Fire Protection will be established as soon as the Abattoirs are in operation.

LIGHT.
Gas (proposed.)

HEAT.
Steam.

HOURS OF WORK.
Day and Night.

The Abattoir is expected to be in operation during June, 1881.

CONSTRUCTION.

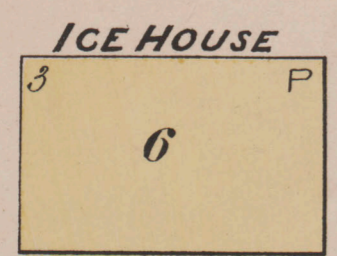
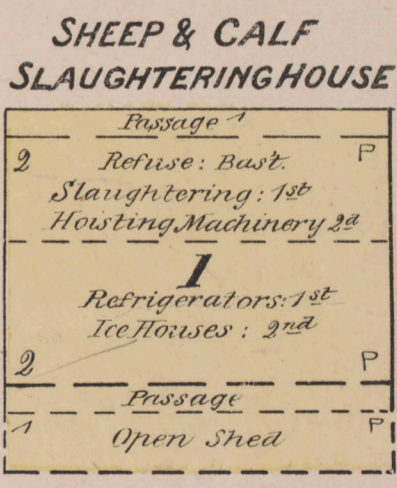
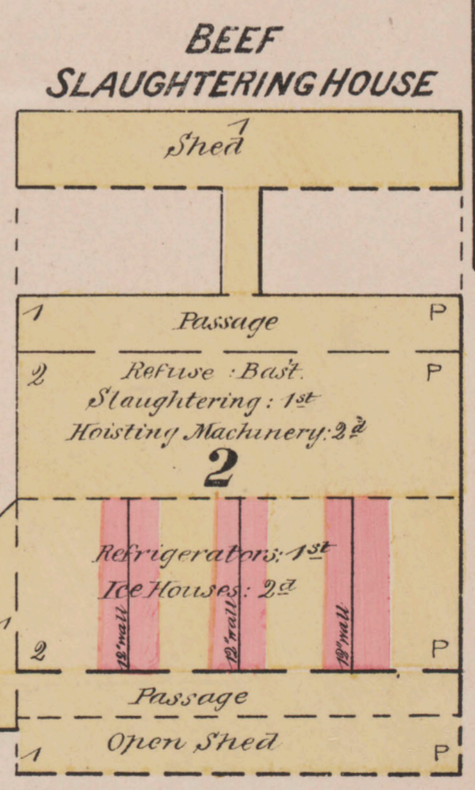
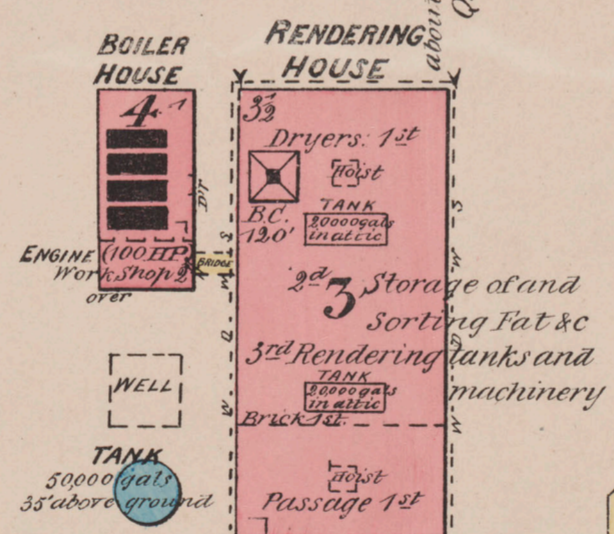
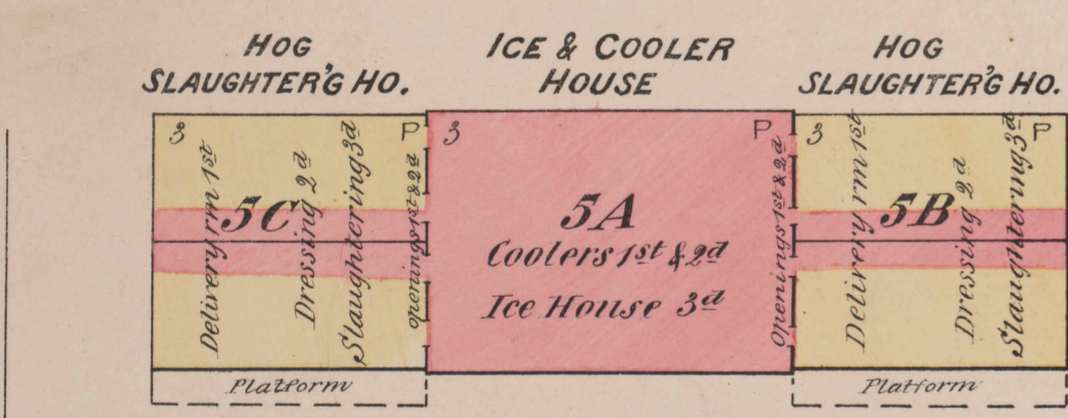
1. SHEEP & CALF SLAUGHTERING HOUSE—Wood Building with Stone and Brick Foundation.

2. BEEF SLAUGHTERING HOUSE—Wood Building, Stone and Brick Foundation; Composition Roof; 3 partial 12-inch Brick Partitions to Roof.

3. RENDERING HOUSE—Brick Building, Stone Foundation, Metal Roof.
WALLS—20 inch 1st floor, 16 inch 2nd, and 12 inch 3rd. **FLOORS**—Double of 1 1/4 inch and 1 inch Boards with Felt between; Beams, 12 x 12; Joists, 14 inch x 3 inch; two rows of 10-inch Cast-Iron Columns, 15-inch Centres 1st and 2nd floors; Wooden Posts 3rd floor.

4.—BOILER HOUSE—Brick Building, with Metal Roof.

5A—ICE AND COOLER HOUSE—Brick Building, Stone Foundation, Composition Roof; front and back Walls are 36 inches thick, with 12 inches space in centre, and solid piers every 5 inches; Side Walls are 20 inches.



ROAD-WAY

SCALE 50 FT TO ONE INCH
0 50 100 150

ROAD

