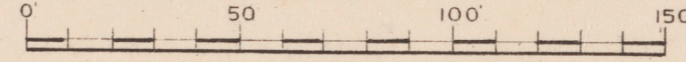


Chas. E. Goad. C.E.
Montreal.
October 1890

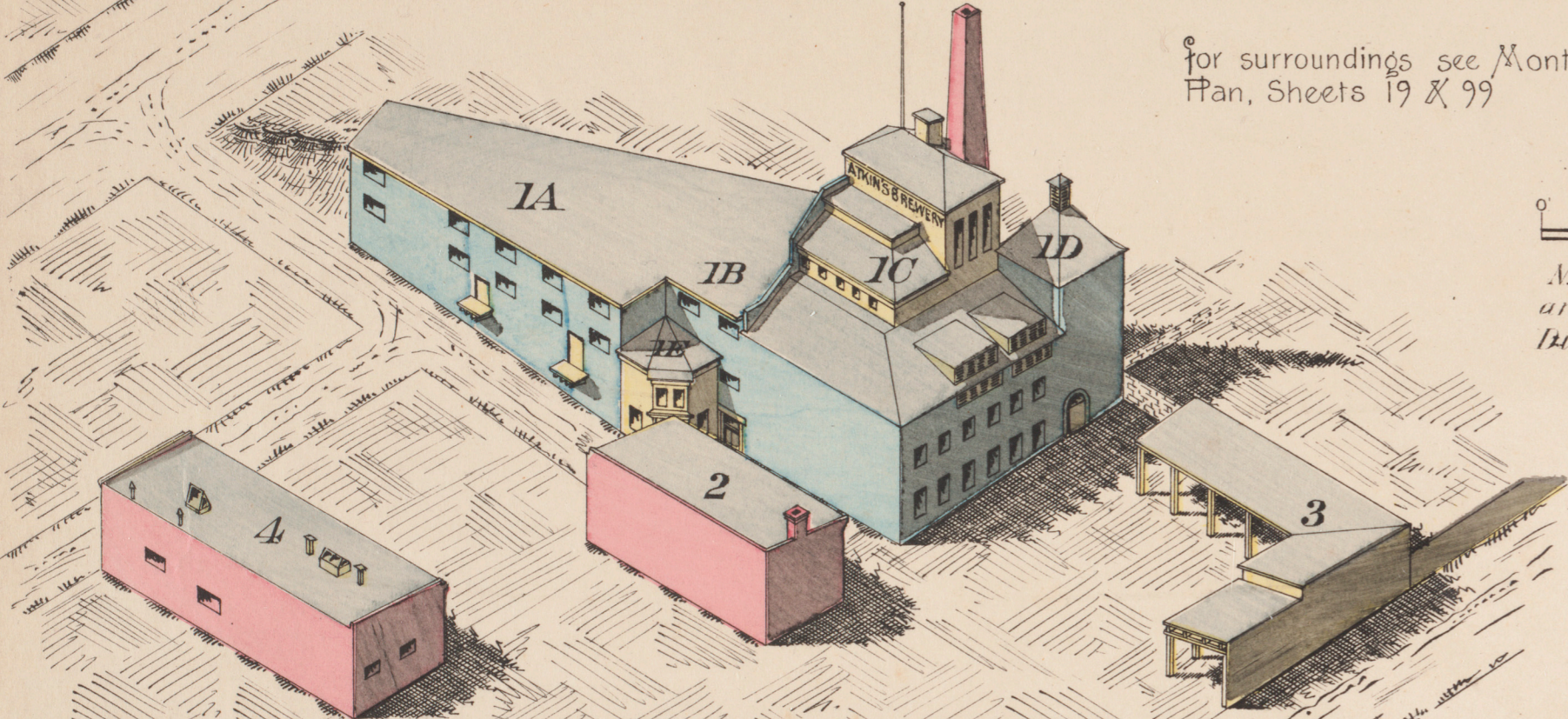
Adjacent buildings not shown on view; for exposures see plan.

for surroundings see Montreal Plan, Sheets 19 & 99

SCALE 50 FEET = 1 INCH



A.B. This being an Isometric Projection and to same Scale as Plan. Vertical Dimensions can be scaled from it.



OWNER:—John Atkin.
MANUFACTURE:—Ale and Porter.
STOCK:—Hops and Malt (not made on premises).
EMPLOYEES:—35 men.
HOURS OF WORK:—7 a.m. to 5 p.m.
POWER:—Steam.
LIGHT:—Gas.
FUEL:—Coal.
HEAT:—Steam pipes hung by iron straps 12 inches below joists.

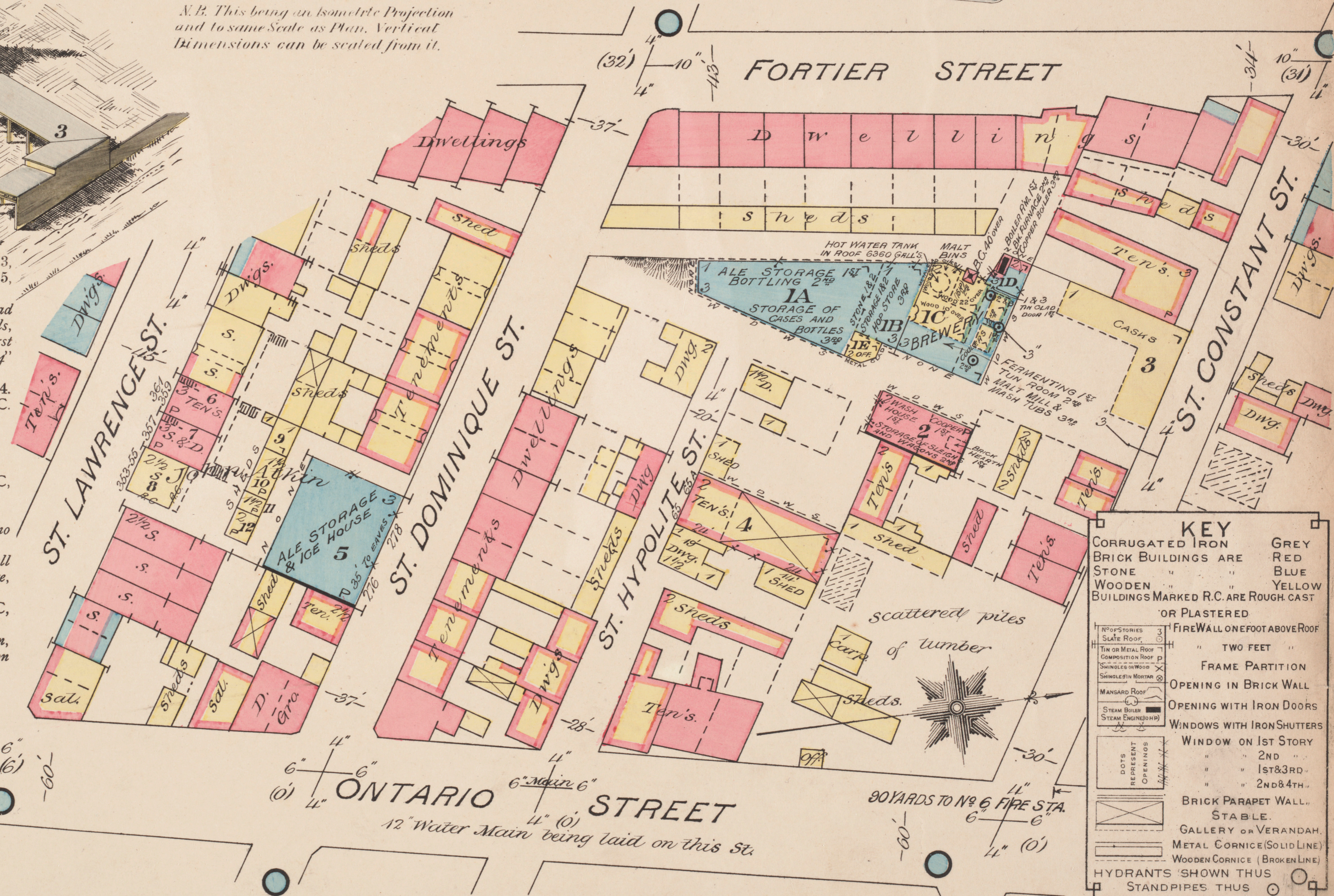
ROOFS:—Nos. 1A, 1B, 1C, 1D, 1E, 2 & 3, covered with Canada plate; No. 2 & 5, tar and gravel; No. 4, iron plate.
DOORS:—Folding doors completely tin-clad between Nos. 1B & 1C, posts and lintels, wood unprotected; single door on first floor between 1C & 1D has opening 24' by 24' over, boarded up.
CORNICES:—12" box cornices on No. 1A, 2 & 4.
ACCESS TO ROOF:—By scuttle on top of 1C. Walls are rough inside. No ceilings.

CONSTRUCTION.

AGE:—Nos. 1A, 1B, 1C, 1D, 1E, 2 & 3 built 1890, No. 4 1887, No. 5 1885.
WALLS:—No. 1A, 30" stone first, 24" stone over. No. 1B, 30" stone first, 24" stone over; party walls 24" stone. No. 1C, 36" stone first, 24" stone over on two sides, 12" brick on two sides; boiler room brick, arched ceiling. No. 2, 12" brick first, 8" brick second.
FLOORS:—No. 1A, 3" first, 2" second (in one thickness), supported on 11" by 3" joists on 12" by 12" wooden posts first, and 10" by 10" posts second floor. No. 1B, 2" (in one thickness), supported on 11" by 3" joists on 12" by 12" wooden posts first, and 10" by 10" posts second floor. No. 1C, Ground floor asphalt, 2" wood upper floors, supported on 11" by 3" joists on iron girders and 14" by 12" wooden beams on 8" C.I columns first, and wooden posts upper floors. No. 1D, furnace floor brick, over arched ceiling of boiler room. No. 2, 3" on 11" by 3" joists, supported by wooden beams 10" by 8" on 10" by 10" posts.

PROTECTION.

STANDPIPES:—2" diam. on each flat No. 1C, 1 1/2" rubber hose to be attached.
LIGHTNING RODS:—None.
WATCHMAN:—Night and Sunday; has no clock.
OUTSIDE HYDRANTS:—Adjacent streets well provided with city hydrants; pressure, 60 lbs. per square inch.
TANK:—Hot water tank in roof of No. 1C, 6360 gallons capacity.
OUTSIDE PROTECTION:—City Fire Station, No. 6, 170 yards from brewery on Ontario Street



KEY

CORRUGATED IRON	GREY
BRICK BUILDINGS ARE	RED
STONE	BLUE
WOODEN	YELLOW
BUILDINGS MARKED R.C. ARE ROUGH CAST OR PLASTERED	
1" FIRE WALL ON FOOT ABOVE ROOF	
2" TWO FEET	
FRAME PARTITION	
OPENING IN BRICK WALL	
OPENING WITH IRON DOORS	
WINDOWS WITH IRON SHUTTERS	
WINDOW ON 1ST STORY	
" " 2ND	
" " 1ST & 3RD	
" " 2ND & 4TH	
BRICK PARAPET WALL	
STABLE	
GALLERY OR VERANDAH	
METAL CORNICE (SOLID LINE)	
WOODEN CORNICE (BROKEN LINE)	
HYDRANTS SHOWN THUS	
STANDPIPES THUS	