

ALASOTMAPEGIATIMGEOEL

Paroissien Micmac

Noté

Singing Book

In Micmac

No. 1: 25 cents

1923

Book 6
2.00

Ind. 418



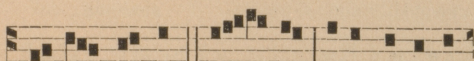
MESGIG ALAMES

teli maoi alasotmapegiatimg.

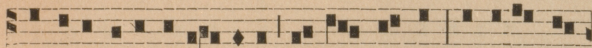
GRAND' MESSE

Elapaltingeoeigtog.

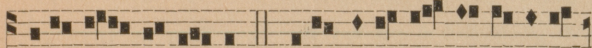
ASPERGES



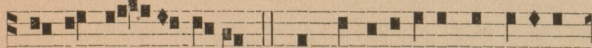
La - pa - li - tesg nsag-mam i-sôp eo-menel



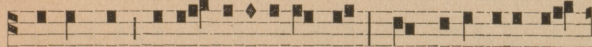
na ogtji gasa-pa - ta - si-tes; gsis - pa - li-tesg, na ogtji ptji-



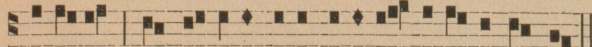
li oa - pe - tes oas - teo Te-li msegig gte-oli-tel - so-ti,



Nis-gam, e - oli - telmin. Gepmi emtôgoalanetj Oegoisit



ag Eogtjit ag Oe- tji-o-li Nisgam. Metj nigetj teli gpmi



nsetogsitj ag mo poni-anotj elmi-ag gepmi nse-to - an.

VIDI AQUAM

Ne-mito-a - peneg sa-mogoaneg oe - tji

to - i - a - gapeneg a - la - sotmô - go-ômng i - na - ga -

ne - gel, alle - loi - a; ag me-set tan tesi-titj

na oetji melmo-a-pa - ta - si-se-nig, oes - ta - ti -

senig tôgo i - tag, a - lle - loi-a, alle - loi-a.

O-la-gni metôgoalog Gsagma-mino, sa-pe-oit ô - gotj ;

ag iaptjio apteteg elmigenig ogteolitel - soti. Gepmi

emtôgoalanetj Oegoisit ag Eogtjit ag Oe-tji-o-li Nisgam

Metj nigetj te-li gpmi nseto-gsitj ag mo ponianotj elmi-ag

gepmi nse-to-an. Nemito-a - peneg samogoaneg.

V. **Ostende nobis, Domine, misericordiam tuam. T. P.**
Alleluia.

R. Et salutare tuum da nobis. *T. P.* Alleluia.

V. Domine, exaudi orationem meam.


R. Et clamor meus ad te veniat.

V. Dominus vobiscum.

R. Et cum spiritu tuo.

Pögtapegiemg.

INTROÏT (1)



Mo gpemaola - - tip atlasemoti gisgeg,
mo gigo-ag gotji to-atop tanel nei-opto-ôgôl; oeleg tan
gesi angôtgel atlasemoti gisgeg, ag goetjôtgel opitenel
ogeloltnen, ag oetgô-lsitj mo gôgoei ogpa-ta-ton.

V. Gepmi emtôgoalanetj Oegoisit ag Eogtjit ag Oetji-oli
Nisgam. Metj nigetj metj nigetj teli gpmi nsetogsitj ag mo
poni-anotj elmi-ag gepmi nseto-an. V. Nenoi-te-temog

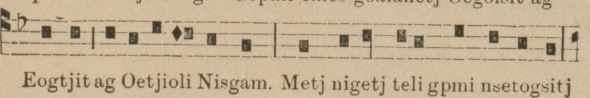
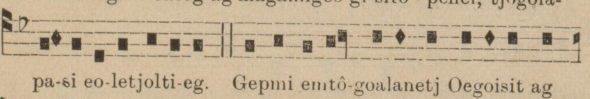
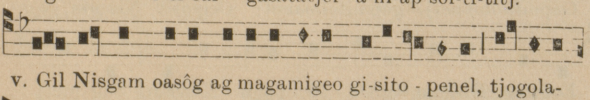
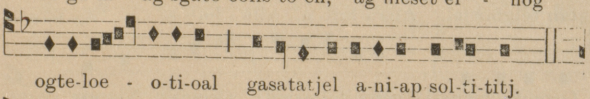
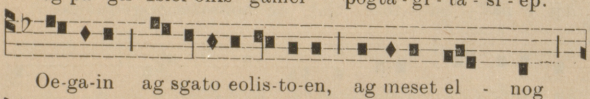
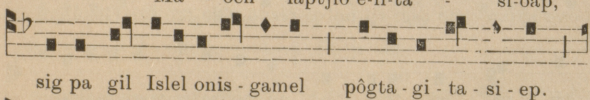
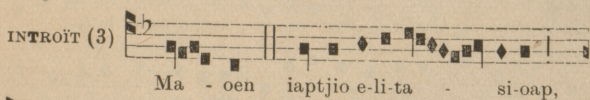
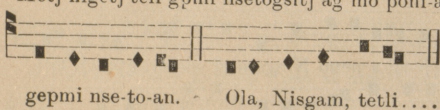
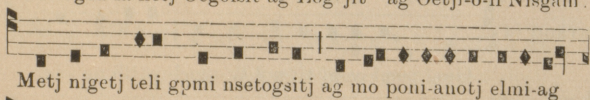
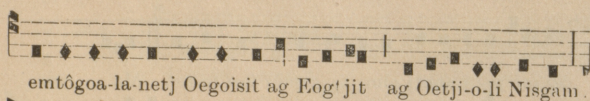


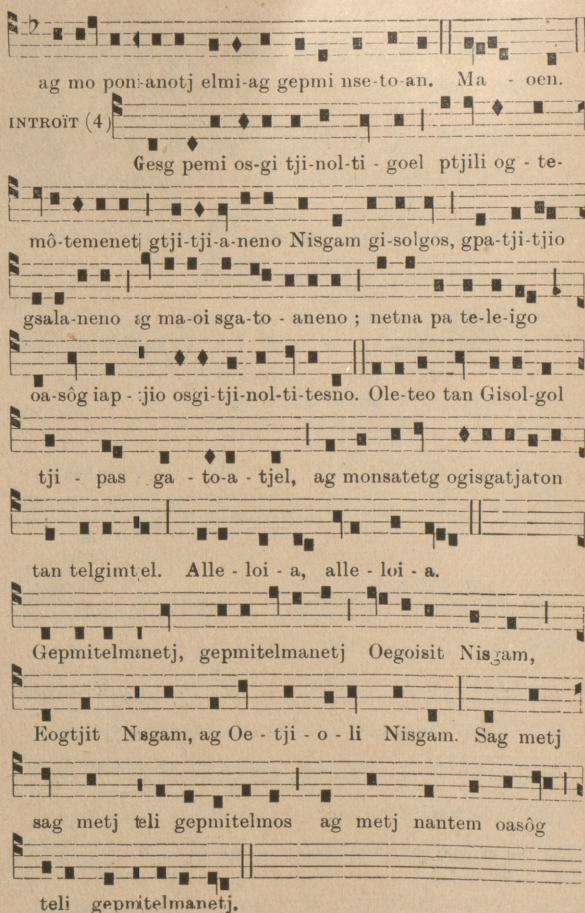
gepmi-te-teme-neo eloigenege-oei na-goeg, eln ôgotj na
Gtjisag-mao otat-la-semotim. Mo gpemaola

INTROÏT (2)



Ola, Nisgam, tetli maoei - eg a-lasomoleg
gteo-laminen eo-lôl-ti-eg. Ggois Sesogoli tan teloi-sit netna
e-loitemoleg mo gtanatel-mi nen pata-el-no-i-eg; tôg nigetj
noli oetogoagonen negem teli pgoatel-oi-nametep ta - neg
glo-tji-e-oe-igtog ôgôtgoetôtteg. Tôg aptj omaltem lapa-
toi-nametj ntjitjagamitjina, tôgo na ogtji gagi gsegatj
oinôtil tetli meso-aptemoi - egel ntini-nenag. V. Te-li
gsi e-o-li-te - te-gen, Nisgam, e - o-litel - min. V. Gepmi





ag mo pon-anotj elmi-ag gepmi nse-to-an. Ma - oen.

INTROÏT (4)

Gesg pemi os-gi tji-nol-ti - goel ptjili og - te-

mô-temenetj gtji-tji-a-neno Nisgam gi-solgos, gpa-tji-tjio

gsala-neno ag ma-oi sga-to - aneno ; netna pa te-le-igo

oa-sôg iap - :jio osgi-tji-nol-ti-tesno. Ole-teo tan Gisol-gol

tji - pas ga - to-a - tjel, ag monsateg ogisgatjaton

tan telgimtel. Alle - loi - a, alle - loi - a.

Gepmitelmenetj, gepmitelmanetj Oegoisit Nisgam,

Eogtjit Nisgam, ag Oe - tji - o - li Nisgam. Sag metj

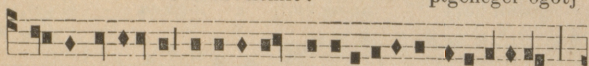
sag metj teli gepmitelmos ag metj nantem oasôg

teli gepmitelmanetj.

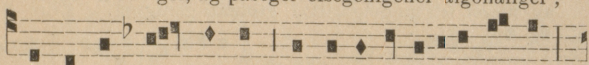
Graduel



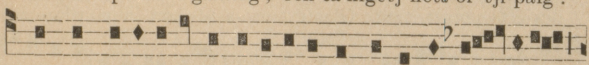
Oen ta nemit? pegenegel ôgotj



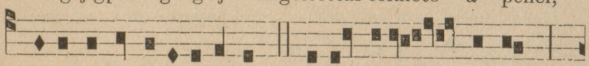
a - oi - a-to-i-gel, ag pasegel elsegenigenel algonaligel ;



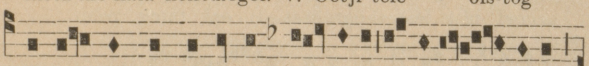
maoen elp an - gamiog ; oen ta nigetj neta-oi tji-palg ?



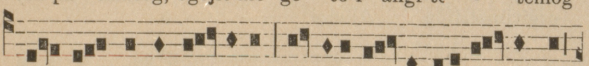
Tan gtjigpeta-ig eig tjeli migoitettal telmeto - a - penel,



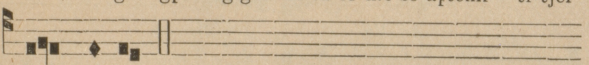
meta mo nala nenemogol. v. Oetji tele - ois-tôg



tan pa - tamtôg, ogtjit mo ge - to-i angi-te - temog



Gi - sol - gol ogpe - gigol ne-ta-oi me-so-aïtemi - ti-tjel

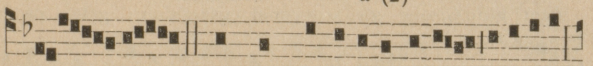


mset gô-goel.

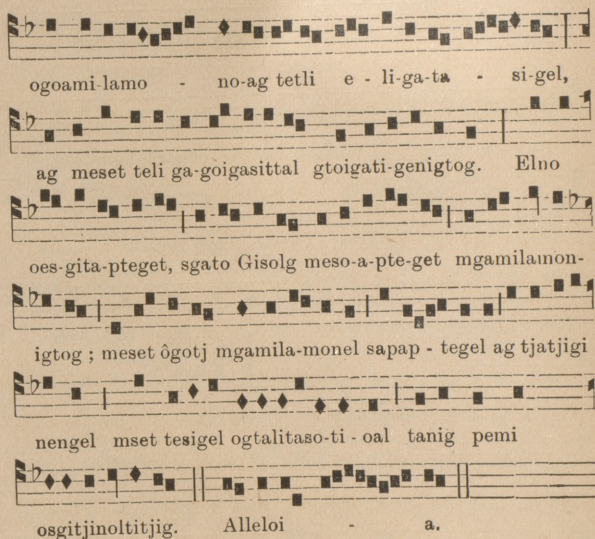


ALLELOIA (1)

Al-le-loi - a (2)

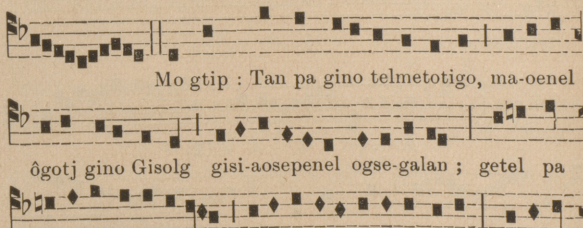


Nsagmam, gil pagaptemenel tanel elnog



ogoami-lamo - no-ag tetli e - li-ga-ta - si-gel,
 ag meset teli ga-goigasittal gtoigati-genigtog. Elno
 oes-gita-pteget, sgato Gisolg meso-a-pte-get mgamilanon-
 igtog ; meset ôgotj mgamila-monel sapap - tegel ag tjtajjigi
 nengel mset tesigel ogtalitaso-ti - oal tanig pemi
 osgitjinoltitjig. Alleloi - a.

ALLELOIA (2) 
 A - lle - loi - a (2)

Mo gtip : Tan pa gino telmetotigo, ma-oenel

 ôgotj gino Gisolg gisi-aosepenel ogse-galan ; getel pa
 maoenel gino Gisolg gisi-aosepenel ogse-galan ; elp e-ta

maoenel gino Gisolg oetji gisiaosepe-nel ogoaiagon. Mset
 tan tesigo Genisgamino peoatemolgos gusta-oi-goneno,
 tjatji-gi sгатemogol tan telgimolgol : pa sig neogtetjig
 gino gte-loeo-tino Alle - loi - a.

Latineoel.

VERSETS

v. Dominus vobiscum. R. Et cum spi-ri-tu tu o.

Amen. Sequentia sancti, etc. R. Glori-a tibi Domine.

Igatagating.

OFFERTOIRE (1)

Gil gonte-oin, ag o-la gon -

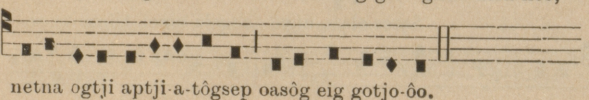
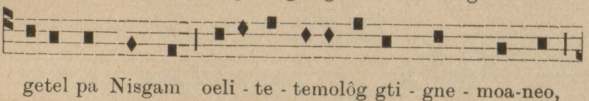
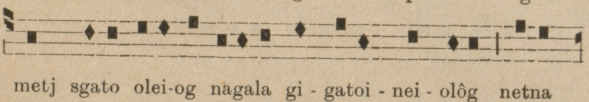
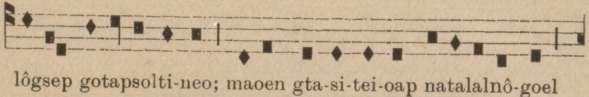
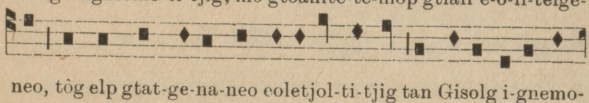
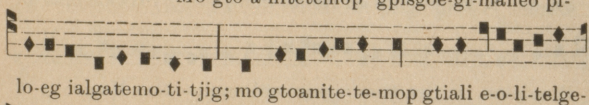
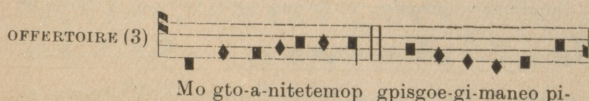
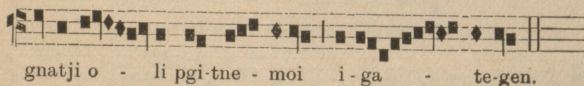
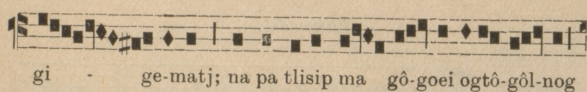
te-oig-tog tli oi-gattes nig, sante maoi-ô-mi og-tjia-teo.

Ag mento-a-gi tli ga - ga-nel ma natel gi-si pep-sô -

te-ge-no-gol. Ag ig-nemoltes apos-gi - genel
 ca - sôg. * Tan - nel tetli gtji-pi-le-menel
 osgitgamog oasôg elp gi-si gtji-pi-te-tal ; ag ta - nel osgi-
 tgamog tetli apgoa-tonel elp oasôg tli apgoa - to ten.
 Ag gil ig - ne-moltes apos - gi-genel oa - sôg
 * Ta - nel

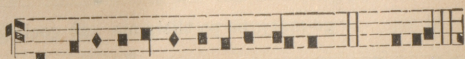
OFFERTOIRE (2)

Eli pgit - nemo-i i - ga-tegenel pat-go-i
 alasotmagan-igtog ntôgo ne - noi-te-temen gi - ge-matj
 gnata - li - tel-mogon, igato pel tan mes - ne-men
 i - ga - te-gem-geoei, semtog natji a-pig-sig - ta-tig

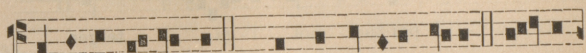


Latineoel.

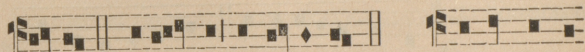
VERSETS



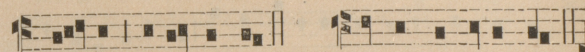
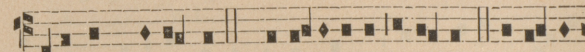
Per omni-a sæ-cu-la sæ-cu-lo-rum. R. Amen.



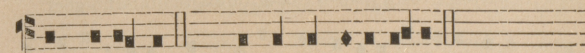
v. Domi-nus vo-bis-cum. R. Et cum spi-ri-tu tu-o. v. Sur-sum

cor-da. R. Ha-be-mus ad Do-mi-num. (*nepg.*) Ha-be-mus ad

Domi-num. v. Gra-ti-as a-ga-mus Domino Deo Nostro,

R. Di-gnum et jus-tum est. (*nepg.*) Dignum et justum est.

Et ne nos....ti-o-nem. R. Sed li-bera nos a ma-lo. Pax Domi-



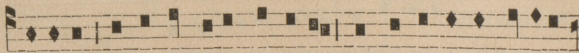
ni....vobiscum. R. Et cum spi-ri-tu tu-o.

Gisi gemnieoimg.

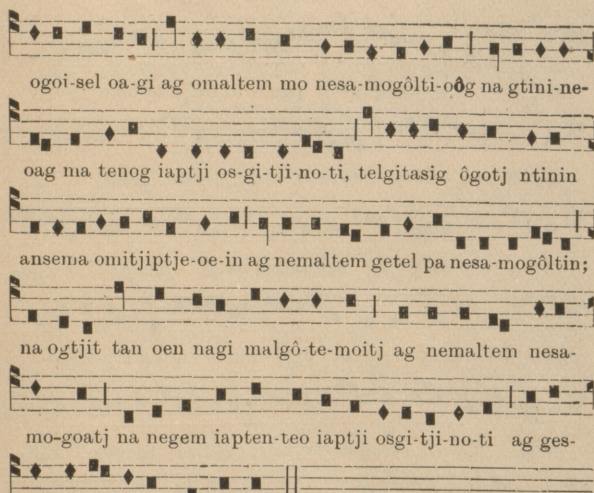
COMMUNION (1)



Sesos elase-niga negela maoi tjigse-ta-se-

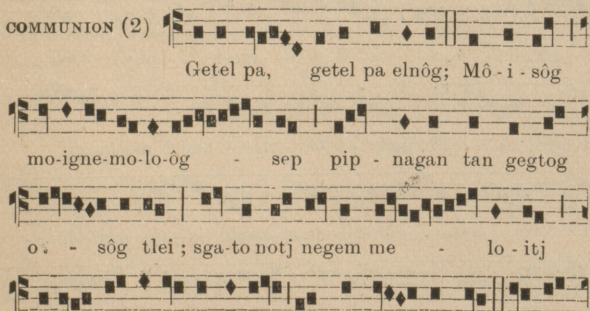


peniga : Getel pa, getel pa elnôg, mo malgô-te-mo-ôg elno



ogoi-sel oa-gi ag omaltem mo nesa-mogôlti-ôôg na gtini-ne-
 oag na tenog iaptji os-gi-tji-no-ti, telgitasig ôgotj ntinin
 ansema omitjijtje-oe-in ag nemaltem getel pa nesa-mogôltin;
 na ogtjit tan oen nagi malgô-te-moitj ag nemaltem nesa-
 mo-goatj na negem iapten-teo iaptji osgi-tji-no-ti ag ges-
 pi-gisgeg tlisip minoa-las.

COMMUNION (2)



Getel pa, getel pa elnôg; Mô-i - sôg
 mo-igne-mo-lo-ôg - sep pip - nagan tan gegtog
 o. - sôg tlei; sga-to notj negem me - lo - itj
 na es - e-molôg pipnagan geg-tog oa - sôg tlei. Eln ô.

gotj tan gis oasôg oetji pge - oi - et ag elno notji
os-gitji-noa - la-tji net-na ansema pi-pna - ganit. Tan
me-sa - tôg nagi ag nemaltem ne-sa - mo-goatj, na ne-
gem nti-nin-ig-tog ag nin ogti - nin - igtog iap-tagal -
ti-eg. Tli-atj, Nsagma-mi-nen, etjelite - te-megel te-li-
mi - egel ; mo sga-to iap-tjio gi - si poni get - lam-
sete-mo - e-gel te - li gi - na - mo-i - e-gel. Oen ta
aptj na - tji tjigse - to - a - tes - nen ? mo ta gil
gel-ne-mo-nel ge-lo-so-a-gan ia-ptjio osgi-tji-no-
tigtog tlel.? Gis get - lam - se - te-meg ag gis -

ne - ne-meg Glis-te-oin Gtjinis-gam Oe-goi-sit gti-nin.

COMMUNION (3)

Nin na pipnagani mimatji oetji ni-sa-si-ep

oasôg; tan oen malgôtg na pipnagan iaptjio pa osgi-tji-no-i-

teo. * Net ola pipnagan oetji nisatenges oa-sôg tan oen mal-

gôtg mo gi-si npog. Nin pipna-ga-ni no -tji osgi-tji-no-a-

lo-ei; tli-atj go-tji-oa-gig pagta-gamigtog tetli malgô-temi-ti-

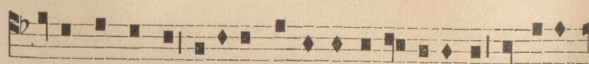
se-ni-gel pgeta-ig oetse-mo-se-nigel, metj sgato nepgig. *Net

COMMUNION (4)

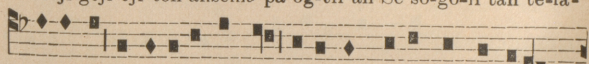
Mesgig getel pa tegô-temeneg, elno-in;

tan ôgotj telaptemogo netna nei-a-tôg te-li pagige-no-a-tôg

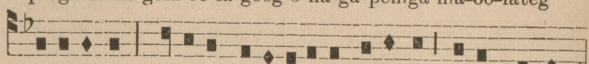
Oea-ta-olg te-li gsi-telmatjel gtji-tjagamitjel. Tlisip ôgotj



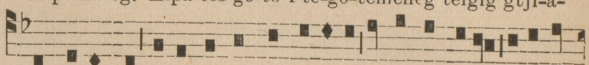
oetji gtji-tji-ton ansema pa og-tli-an Se so-go-li tan te-la-



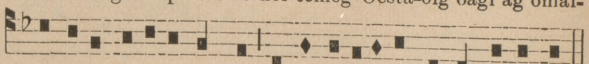
po-go-es ne-gela oe-la-goeg o-na-ga-pemga ma-oô-lateg



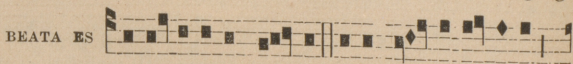
oi-pomateg. Elpa tes ge-to-i te-gô-temeneg telgig gtji-a-



la-sotmagan elpa tes ne-noi-temeg Oesta-olg oagi ag omal-

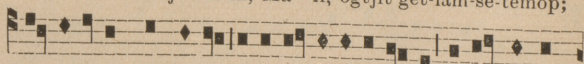


tem te-li tepgi-sa-tôg-sep, ne-ge-la gagama-ta-oal-se-olgoeg.

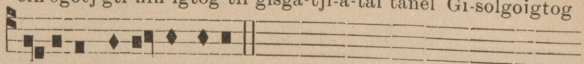


BEATA ES

Oe-tji o-le-in, Ma - li, ogtjit get-lam-se-temop;

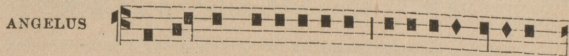


eln ôgotj gti-nin-igtog tli gisga-tji-a-tal tanel Gi-solgoigtog



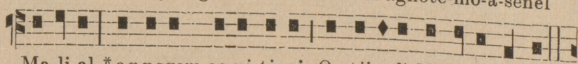
oetagno-te-molge-penel.

Gil epitjig.... *Alasotmanetj*.... Tôg, Nisgam....



ANGELUS

1. Gtji-sag-mao otansa-lemel agnote-mo-a-senel



Ma-li-al, * ag negem oe-ni-tjanis Oe-tji-o-li Nisgame-oigtog.

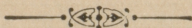


Go-le-in Ma-li sa-pe-o-til oa-tjo-pi-nel, Gsagma-mi-no te-
 goei-asg, epi-tjig patji-tji o-le-i-nig, ag oe-leg tan egtla-
 mi-log oetji-manit Se-sos. Petjili sa-pe-oin Mali oegoisin
 Oesta-olgop, nigetj alasote-mel-se-oin e-lo-e-ol-ti-eg, ag
 apis oi-goi-a - ti-eg a-la-sotmel se-oi-tesnen. 2. Nin Gtji-
 sagmao ona-ga-pemisgoömel, * tli-atj nti-ni-nigtog tan te-la-
 pogoe-sep. Go-le-in. 3. Ag Gtji-ge-lo-so-a-gan Nisgam ogoi-
 sel el-no-a-sis, * ag etlagatges tan eimotigo. Go-le-in.

v. Ora pro nobis, sancta Dei Genitrix.

R. Ut digni efficiamur promissionibus Christi.

Gisna, Alasotmelseoin.... Gotato, etamoleg....





ALASOTMAPEGIATIMGEOEL

AGANTIEOIMGEOEI

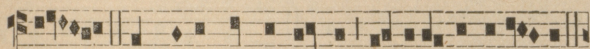
Messes des Dimanches

KYRIE

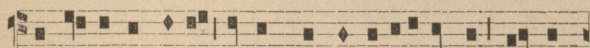
Nis - gam e - o-li-tel-min (3). Se - sos
- e - o-li-tel-min (3). Nis - gam e -
o-li - tel-min (2). Nis - gam e
o-li - tel-min.

GLORIA

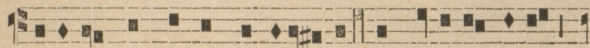
Ag osgi-tgamog tli o-langoa-titj elnog
tanig oeli gsalgoi-ti-tjel Gisolgol. Gep-mi-tel - moleg.
Em-tôgoalneg. Mesta peigoei gsitelmoleg. Me-gi - telmo-leg.



Gil mesta gse-gelmogsin, na oetji mo-io-al-neg.



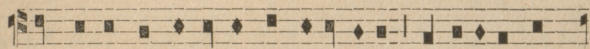
Gil oesagma-mi-eg Nis-gam pge-ta-ig e-le-ge-oin, Nisgam



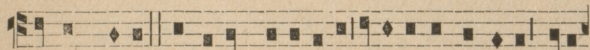
Oegoisin mset gôgoel ne-ta-oitonel. Gil oesagma-mi-eg



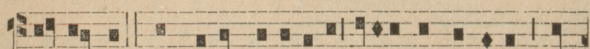
neogti-gin E-ogtjin Se-so-go-li. Gil sagma-oin nisga-me-oin



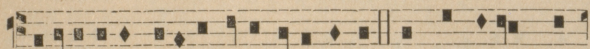
gil Gtjinisgam ogtjitjge-loe-ogtjitjemel, gil oegoisit Gtji-



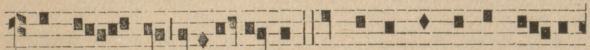
nisgam gtinin. Gil notji gsegatonel elno-i pa tamsotil, e-o-



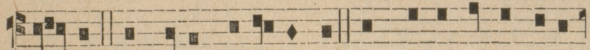
li-tel-min. Gil no-tji gsegatonel elno-i pa-tamso-til, tôg



te-li e-la-so-molegel e-o-liste-mo-in. Gil gotj ogti - na -



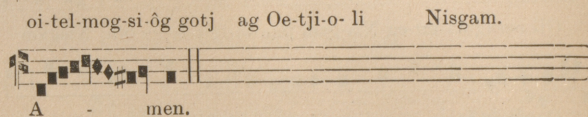
gang e - pin, e-o-li-telmin Gil ô-gotj neogti ptji-li sa-



pe - oin. Gil neogti gtjisagma-oin. Gil neogti peigoei gstel-



mogsin Se - so-go-li. Ag metj ni-getj tetpi sagma-
oi-tel-mog-si-ôg gotj ag Oe-tji-o-li Nisgam.

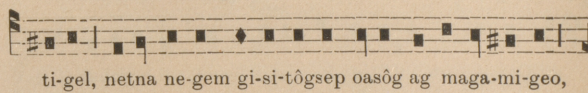


A - men.

CREDO

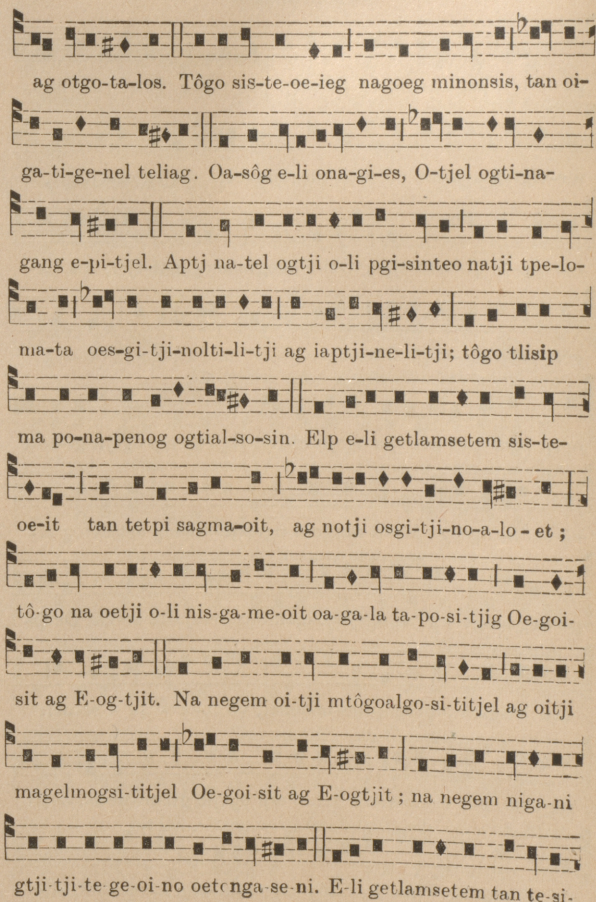


Oe goisit mset gôgoel tan telitetgel tela-

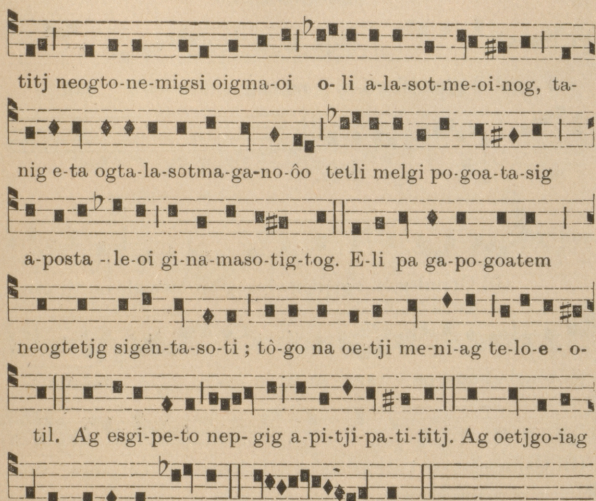


ti-gel, netna ne-gem gi-si-tôgsep oasôg ag maga-mi-geo,
mset tanel ne mitemgel ag mo ne-mite-megel tet-pi gi - si-
tôgse-pe-nel. E-li getlamsetem elp neogte-tjit tan mena-
gatj oesagmamoltigo, Se-so-go-li, na Gtjinisgam ogoisel
neogti-gi - li-tjel. Otjeg oetji os-gi-tji-no-it es-ge-menag
mset gôgoel gi-si-ta-si-nogoeg. Nisgame-oigtog oe-tji nis-

game-oit, pagtategigtog pa oetji pagta-teg, getel pa Nisga-
me-oigtog ansema pa oetji nisgame-oit. Otjeg oe-tji-git,
mo sga-to gi-si-ta-sigo, Otjel neogta-mogsi-ti-tjel, na ne-
gem oetji ma-oi gi-si-ta-sigse-pe-nel mset gôgoel. Oa-sôg
oetji pge-oi-es gino pa ogtjit el-nol-tigo ag elp ogtjit ge-to-i
og-se-ta-olgoeg. Ma-li nasgoet ogte-la-mi-log oetja-tôg-se-
pe-neg oa-gei-eg ag ogtjitja-gamitja oe-tja-la-se-na; Oetji-
o-li Nisgam piptôgôpsga-la-senel, el-no-a - la - se-nel;
tôgo na te-li el-no-a-sis. Gino elp ogtjit gti-ni-ne-no oetji
glo-tji-eogtôs, Pons Pi-latôg sagma-oi-teg, a-mas-goipelnos




ag otgo-ta-los. Tôgo sis-te-oe-ieg nagoeg minonsis, tan oi-
 ga-ti-ge-nel teliag. Oa-sôg e-li ona-gi-es, O-tjel ogti-na-
 gang e-pi-tjel. Aptj na-tel ogtji o-li pgi-sinteo natji tpe-lo-
 ma-ta oes-gi-tji-nolti-li-tji ag iaptji-ne-li-tji; tôgo tllisip
 ma po-na-penog ogtial-so-sin. Elp e-li getlamsetem sis-te-
 oe-it tan tetpi sagma-oit, ag notji osgi-tji-no-a-lo-et ;
 tô-go na oetji o-li nis-ga-me-oit oa-ga-la ta-po-si-tjig Oe-goi-
 sit ag E-og-tjit. Na negem oi-tji mtôgoalgo-si-titjel ag oitji
 magelmogsi-titjel Oe-goi-sit ag E-ogtjit ; na negem niga-ni
 gtji-tji-te ge-oi-no oetnga-se-ni. E-li getlamsetem tan te-si-



titj neogto-ne-migsi oigma-oi o-li a-la-sot-me-oi-nog, ta-
 nig e-ta ogta-la-sotma-ga-no-ôo telti melgi po-goa-ta-sig
 a-posta -le-oi gi-na-maso-tig-tog. E-li pa ga-po-goatem
 neogtetjg sigen-ta-so-ti; tò-go na oe-tji me-ni-ag te-lo-e - o-
 til. Ag esgi-pe-to nep-gig a-pi-tji-pa-ti-titj. Ag oetjgo-iag
 iaptji os-gi-tji - no-ti. A - men.

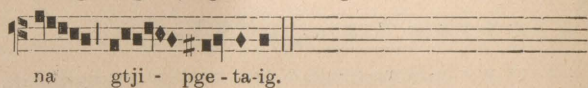
SANCTUS



Gtji-sa-pe-oin, gtji-sa-pe-oin, gtji-sa-pe-oin sag-
 ma-oin Nisgam sa - pôt. Oa - sôg ag ma - ga-
 mi-geo mesta oa-tjo-tegel teli gsegelmog-sin; ô-san-na
 gtji - pge-ta ig, Gpmi mo-io al-go-sitj tan nigetj Gi-



sol - gol el-gimtjel gti-ni - ne-nag; ô - san -



na gtji - pge - ta-ig.

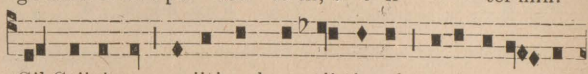
AGNUS



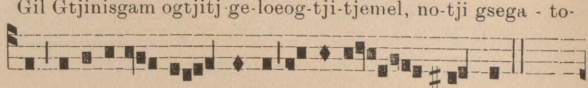
Gil Gtjinisgam ogtjitjge-loeog-tji-tjemel, no-tji gse-



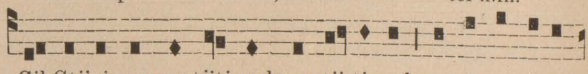
ga-tonel el-no-i pa - tam - so-til, e - o-li - tel-min.



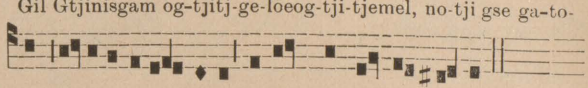
Gil Gtjinisgam ogtjitj-ge-loeog-tji-tjemel, no-tji gsega - to-



nel el-no-i pa - tam - so-til, e - o-li - tel-min.



Gil Gtjinisgam og-tjitj-ge-loeog-tji-tjemel, no-tji gse ga-to-

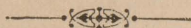


nel elno-i patam-sotil, ig-ne-moin no-lan- goa-nen.

ITE, MISSA EST



De - o gra-ti-as.



GALEMEOIMGEOEI

Dimanches de l'Avent et du Carême.

KYRIE




Nis-gam e - o-li-telmin (3).



Se - sos e - o-li-telmin (3). Nisgam e -



o-li-telmin (2). Nisgam e -



o-li-telmin.

CREDO — *Oegoisit* — N. 20.

SANCTUS



Gtji-sa-pe - oin, gtji-sa-pe-oin, gtji-sa- pe - oin sag-




ma-oin Nisgam sa - pôt. Oa-sôg ag maga-mi-geo



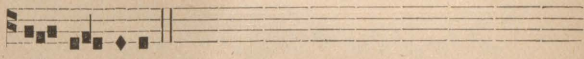
mesta oa-tjo-tegel teli gsegel-mog-sin ; ô - san - na



gtji-pge-ta-ig. Gpmi mo-io-al-go-sitj tan nigetj Gi-




solgol el-gimtjel gti-ni - nenog; ô-san - na




gtji- pge-ta-ig.


AGNUS




Gil Gtjinisgam ogtjitj-ge-loeog-tji-tjemel, notji gse-




ga-tonel elno-i pa-tam-so-til, e-o-li - tel-min. Gil




Gtjinisgam ogtjitj-ge-loeog-tji-tje-mel, notji gsega-to-nel



elno-i pa-tam-so-til, e-o-li - tel-min. Gil Gtjinisgam




ogtjitjge-loeogtji - tjemel, notji gsega-tonel elno-i pa-



tam-so-til, igne-mo-in nolangoa-nen.

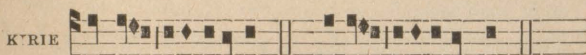
BENEDICAMUS



De - o gra-ti-as,

ANIAPSOAGANIGISGEGEL

Feries



Nis-gam e-o-litelmin (3). Sesos e-o-litelmin (3).



Nisgam e-o-litelmin (2). Nisgam e-o-litelmin.

Gtjisapeoin ag Gtjinisgam nepgigeoel.

PESTIEOIMGFOEI lei TELI MSEGIG (1)

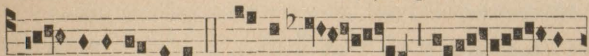
Messe Royale (1er ton).



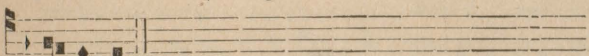
Nis - gam e - - e - o-li-tel-min. (3)



Sesos e - e - oli-tel-min. (3) Nisgam e - e -



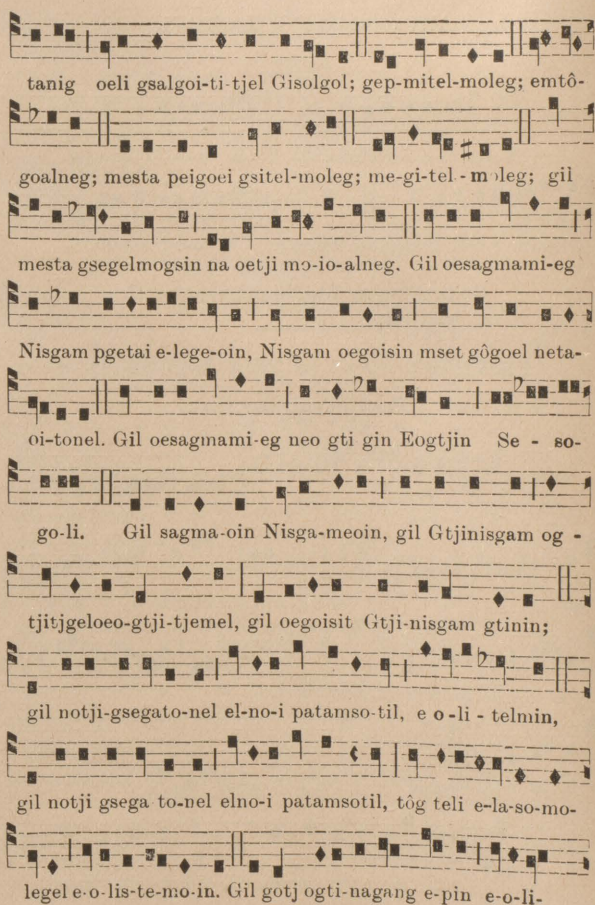
e - o-li-tel-min. (2 Nisgam e - e - o-



i tel - min.



Ag ogsit-gamog tli olan goatitj elnog



tanig oeli gsalgoi-ti-tjel Gisolgol; gep-mitel-moleg; emtô-
 goalneg; mesta peigoei gsitel-moleg; me-gi-tel-moleg; gil
 mesta gsegelmogsin na oetji mo-io-alneg. Gil oesagmami-eg
 Nisgam pgetai e-lege-oin, Nisgam oegoisin mset gôgoel neta-
 oi-tonel. Gil oesagmami-eg neo gti gin Eogtjin Se - so-
 go-li. Gil sagma-oin Nisga-meoin, gil Gtjinisgam og -
 tjitjgelo-o-gtji-tjemel, gil oegoisit Gtji-nisgam gtinin;
 gil notji-gsegato-nel el-no-i patamso-til, e o - li - telmin,
 gil notji gsega to-nel elno-i patamsotil, tóg teli e-la-so-mo-
 legel e-o-lis-te-mo-in. Gil gotj ogti-nagang e-pin e-o-li-

telmin; gil ôgotj neo-gti ptji li sa-pe-oin; gil neogti gtjisag-
ma-oin; gil neogti peigoei gsi-tele-mogsin Se-so-go-li.

Ag metj nigetj tetpi sagmaoi-tel-mog · si-ôg Gotj ag Oetji-
o-li Nisgam. A - - - men.

CREDO Oegoisit mset gôgoel tan teli-tetgel te la-

ti-gel netna negem gisitôgsep oasôg ag maga-mi geo, mset
tanel nemitemgel ag mo nemitemegel tetpi gi-sitôg-se-penel.

Eli getlamsetem elp neogtetjit tan menagatj oesagma-
mol-tigc Se-so-goli, na Gtjinisgam o-goisel neogti-gi - li-tjel.

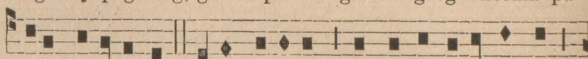
Otjeg oetji osgi-tji-no-it esgomenag meset gôgoel gisi-



tasi-nogoeg. Nisgame-oigtog oetji nisgame-oit, pagtategig-



tog oetji pagtateg, ge tel pa Nis-game-oigtog ansema pa



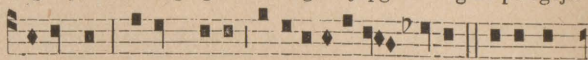
oetji nisgame-oit. Otjeg oetjigit, mo sgato gi-si-ta-sigo,



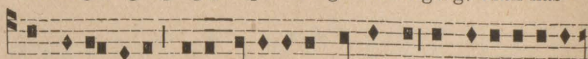
Otjel neogta-mog-si-ti-tjel; na negem oetji ma-oi gi-si-ta-



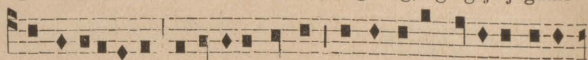
sig-sepenel mset gô-goel. Oasôg.oetji pge-oi-es gino pa ogtjit



elnoltigo, ag elp ogtjit ge-to-i ogse-ta - olgoeg, Mali nas-



goet ogtlamilog oetjatôgse peneg oagei-eg, ag ogtjitjagami-



tja oetjalasena; Oetji-o li Nisgam piptôgôpsga-la senel, elno-

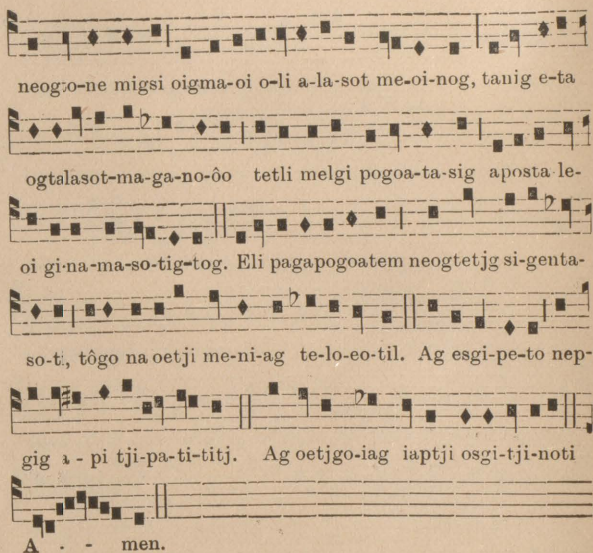


a-lasanel, tôgo na teli elno-asis. Gino elp ogtjit gtini-neno



oetji glotjieogtôs, Pons Pilatôg sagma-oiteg, amasgoi-pelnos

ag otgo - ta-los. Tôgo siste-oe-ieg nagoeg minonsis tan
oi - ga-ti-genel te-li-ag. Oasôg e-li ona-gi es, Otjel ogti-na-
gang e-pi-tjel. Aptj natel ogtji o li ppgisinteo natji tpelo
mata oesgi tji-nol - ti-li-tji ag iaptji ne-li-tji; tôgo tllisip ma
pona-pe-nog ogti-al-so-sin. Elp eli getlamsetem siste-oe-it
tan tet-pi sagmaoit ag notji osgi-tji no-a - lo-et; tôgo na
oetji oli nisga-me-oit oagala tapo si-tjig Oegoisit ag Eogtjit.
Na negem oitji mtôgoal-go-si - ti-tjel ag oitji magel-mog-
si - ti-tjel Oe - goisit ag Eogtjit; na negem nigani gtji-
tji-te-ge-oino oetonga-seni. Eli getlamse-tem tan te si-titj

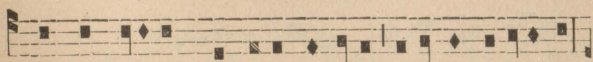


neog:one migsî oigma-oi o-li a-la-sot me-oi-nog, tanig e-ta
 ogtalasot-ma-ga-no-ôo tetli melgi pogoâ-ta-sig apostâ-le-
 oi gi-na-ma-so-tig-tog. Eli pagapogoatem neogtetjg si-genta-
 so-ti, tôgo na oetji me-ni-ag te-lo-eo-til. Ag esgi-pe-to nep-
 gig a - pi tji-pa-ti-titj. Ag oetjgo-iag iaptji osgi-tji-noti
 A . - men.

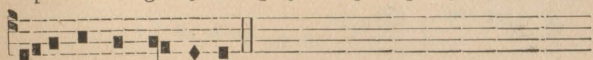
SANCTUS



Gtji - sa-pe - oin, gtji - sa-pe - oin, gtjisa-pe -
 oin sagma-oin Nisgam sapôt. Oasôg ag maga-migeo mes-ta
 oatjô tegel teli gsegelmog-sin: O - sana gtji gpe taig.



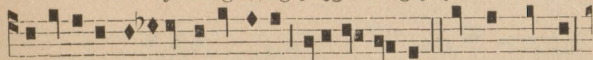
Gpmi mo-ialgositj tan nigetj Gisolgol elgimtjel ntinine nag:



O sa-na gtji-gpe-ta-ig.



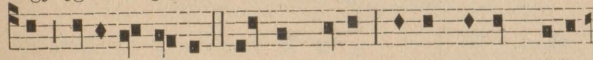
Gil Gtji-nis-gam ogtjitjge-loeogtjitjemel notji



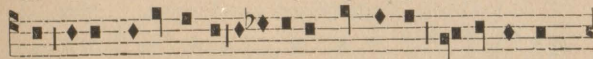
gsegatonel elno-i patamsotil, e-o-li-tel-min Gil Gtji-nisgam



ogjitjge-loe-ogtji-tjemel notji gse-ga tonel el-no-i pa-tamso-



til e-o-li-telmin. Gil Gtji-nisgam ogtjitj-geloeo-tjitje-



mel notji gsega-to-nel elno-i pa-tam-so-til, ig-ne mc-in



nolangoa-nen. De - o gra-ti-as.

PESTIEOIMGEOEI lei TELI MSEGIG (2)

Ire CLASSE (second ton).



Nis - gam e - e-o-li-tel-min (3).



Se - sos e - e - o-li-tel-min (3).



Nis - gam e - e - o-li-tel-min (2).

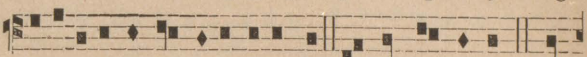


Nis - gam e - e - e - o-li-tel-min.

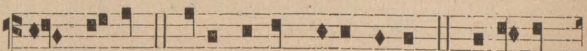
GLORIA



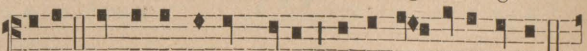
Ag ogsitgamog tli olangoa-titj elnog



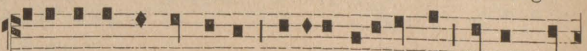
tanig oeli gsalgoi-titjel Gisol-gol. Ge-pmi-tel-moleg. Em-



tô-goal-neg. Mesta peigoei gsitel-moleg. Megi-tel-



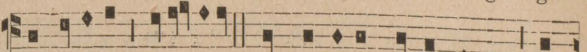
moleg. Gil mesta gsegel-mogsin, na oetji mo-io-alneg



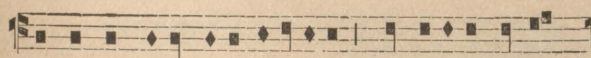
Gil oesagma-mi-eg Nisgam gpeta-ig e-le-ge-oin, Nisgam Oe-



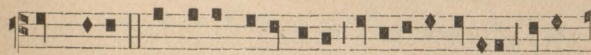
oisin mset gôgoel ne-ta-oitanel. Gil oesagma-mi-eg neogti-



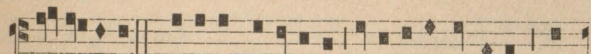
gin ð-ogtjin Se-so-goli. Gil sagmaoin Nisgam-me-oin, gil



Gtjinisgam ogtjitjgeloe-ogtjitjemel, gîl Oegoisit Gtjini-



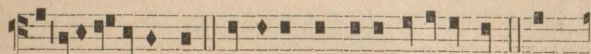
sgam gtinin. Gil notji gsega-tonel el-no-i patamsotil, e-o-



li-tel - min. Gil notji gseगतonel el-no-i patamsotil, tóg



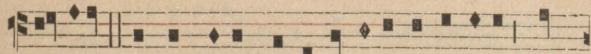
teli e-lasomo-legal e-o-lis-temo-in. Gil gotj og-ti-na-gang e-



pin, e-o-li-tel - min. Gil ôgotj neogti ptjili sape-oin. Gil



neogti gtji-sag-ma-oin. Gil neogti peigoei gsitel-mogsin Se-

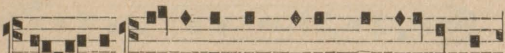


so-goli. Ag metj nigetj tet-pi sagmaoi-telmogsi-ôg Gotj

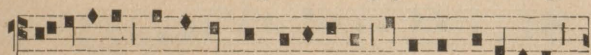


ag Oetji-o-li Nisgam. A - - - men.

CREDO



Oe-goisit mset gôgoel tan teli-tet-gel

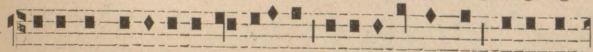


te-lati-gel; netna negem gisitôgsep oasôg ag magamigeo,

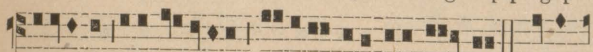
mset tanel nemitemgel ag mo nemitemegel tetpi gi-sitôgse-
 penel. Eli getlamsetem elp neogtetjit tan menagatj oesag-
 mamoltigo Seso-goli; na Gtji-nisgam ogoisel ne-o-gti-gi-
 litjel. Otjeg oetji os-gi;tji-no-it esgomenag meset gôgoel
 gi-si-ta-si-no-goeg. Nisgame-oigtog oetji nisgame-oit; pag-
 tategigtog pa oetji pag-ta-teg, getel pa Nisga-me-oigtog
 ansema pa oe-tji Nisga-me-oit. Otjeg oetjigit mo sgato gi-
 si-tasiog, otjel neogtamog-si-titjel; na negem oetji maoi
 gisi-tasigse-penel mset gôgoel. Oasôg oetji pge-oi-es gino
 pa ogtjit elnol-tigo, ag elp ogtjit geto-i ogse-ta - olgoeg.



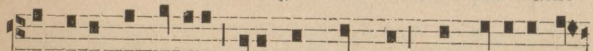
Mali nasgoet ogtla-mi-log oetjatôgse-peneg oa-gei-eg, ag



ogtji-tja-gamitja oetja-lasena; Oetji-o-li Nisgam piptôgôps-



galasanel elno-a-lasanel; tôgo na teli elno-a - sis. Gino



elp ogtjit gti-ni-neno oetji glo-tjiew-gtôs, Pons Pilatôg sag-



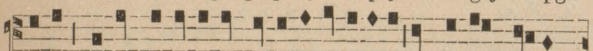
maoiteg, amasgoipelnos ag o-tgo-ta-los. Tôgo siste-oe-ieg-



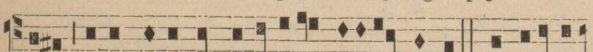
nagoeg minonsis tan oigati-genel te-li-ag. Oasôg e-li o-na-



gi-es Otjel ogti-nagang epi-tjei. Aptj natel ogtji oli pgi-



sinteo, natji tpeiomata oesgitjinoltititji ag iaptji ne-li-



tji; tôgo tllisip ma ponapenog ogtial-so-sin. Elp eli get-



lamsetem siste-oe-it tan tetpi sag-ma-oit ag notji osgitji-

no-a-lo-et; tōgo na oetji-o-li nisgame-oit oagala tapo-si-
 tjig Oegoisit ag Eogtjit; na negem oitji mtōgoal-go-si-ti-
 tjel ag oitji magelmog-si-titjel Oegoisit ag E-ogtjit; na ne-
 gem nigani gtjitji-te-ge-oino oeton-gaseni. E-li getlamse-tem
 tan tesitij neog-to-ne-migsi oigema-oi oli al-a-sot.ne-oi-
 nog ta-nig eta ogtalasot-ma-ga-no-ōo tetli melgi pogoata-sig
 apostale-oi gi-na-masotigtog. E-li paga-pogoa-tem neog-
 tetjg si-genta-so-ti; tōgo na oetji me-ni- ag te-loe-otil.
 Ag es-gi-peto nepgig apitji-pa-ti-titj; ag oetjgo-iag
 iaptji o-gi-tji- noti. A - men.

SANCTUS

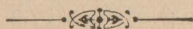


Gtji sa - pe-oin, gtji sa-pe - oin, gtji-
 sa-pe-oin sagma-oin Nisgam sapôt. Oasôg ag magamigeo
 mesta oatjo- tegel teli gsegel-mog-sin : Osa - na gtji-gpe-
 ta-ig. Gpmi mo-io-algositj tan nigetj Gisolgol elgimtjel gtj-
 ni-ne-nag : Osana gtjigpe - ta-ig.

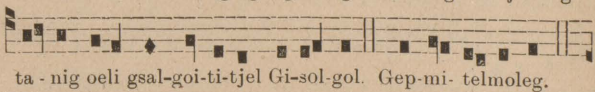
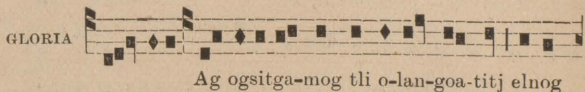
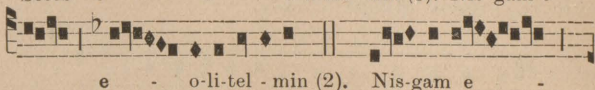
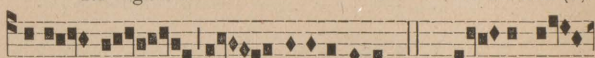
AGNUS



Gil Gtjinisgam ogtjitj-geloe-ogtji-tjemel, notji
 gsega-tonel elno-i patamsotil, e - o-li-tel-min. Gil
 Gtjinisgam ogtjitjgeloe-ogtjitjemel, notji gsegatonel elno-i
 pa-tamsotil, e - o-li-tel - min. Gil Gtjinisgam ogtjitjgeloe-
 ogtjitjemel, notji gsegatonel el-no-i pa-tamsotil, ig-ne -



PESTIEOIMGEOEI 2ei TELI MSEGIG

2e Classe

mo-leg. Gil mesta gsegelmogsin na oetji mo-

io - al - neg. Gil oesagmami-eg Nisgam pgeta-ig e-le-

ge - oin, Nis - gam Oegoisin, mset gôgoel neta-oi-to-nel.

Gil oesagma-mieg ne-ogti-gin E - ogtjin Se - so -

go-li. Gil sagma-oin Nisga-me-oin, gil Gtjinisgam

ogtjitjge-loe-o-tji-tjemel, gil oegoisit Gtjinis-gam gtinin.

Gil notji gse-ga-to-nel elno-i pa-tamso-til, e-o-li-tel - min.

Gil notji gse-ga-to-nel elno-i pa-tamsotil, tóg te-li e-laso-

mole-gel e-o-lis-te-mo-in. Gil Gotj ogti - na - gang e - pin

e-o-li - tel - min. Gil ôgotj ne-ogti ptjili sape-oin. Gil



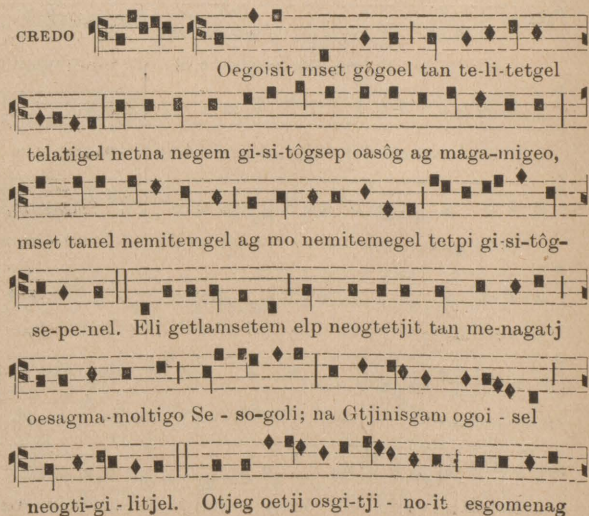
neogti gtji-sag-mao-in. Gil neogti peigoei gsi-tel-mog-sin

Se - so-go-li, Ag metj nigetj tetpi sagma-oi-

tel - mog - si-ôg Gotj ag Oetji-o-li Nisgam.

A - men

CREDO



Oegoisit mset gôgoel tan te-li-tetgel

telatigel netna negem gi-si-tôgsep oasôg ag maga-migeo,

mset tanel nemitemgel ag mo nemitemegel tetpi gi-si-tôg-


se-pe-nel. Eli getlamsetem elp neogtetjit tan me-nagatj

oesagma-moltigo Se - so-goli; na Gtjinisgam ogoi - sel

neogti-gi - litjel. Otjeg oetji osgi-tji - no-it esgomenag


meset gôgoel gisi-ta-sinogoeg. Nisgame-oigtog oetji Nis-
game-oit, pagtategigtog pa oetji pagtateg ; getel pa Nis-
game - oig tog ansema pa oetji Nisgame-oit. Otjeg oetji-
git, mo sgato gi-si-tasiog otjel ne-ogtamogsi-ti-tjel; na ne-
gem oetji ma-oi gisi-ta-sig sepe - nel mset gô-goel. Oasôg
oetji pge - oi - es gino pa ogtjit el-nol-tigo, ag elp og-
tjit - ge-to-i og se-ta-ol-goeg. Mali nas-goet ogtela-
milog oetja-tôgse-peneg oageieg, ag ogtjitjagamitja
oetja-la - sena; Oetji-o-li Nis-gam pip-tô-gôp-sga-la-se-nel,
el-no-a - la-se-nel; tôgo na teli el-no-asis, el-no-a-sis.

Gino elp ogtjit gtini-ne-no oetji glo - tji - eogtôs, Pons
 Pi-la-tôg sag-ma-oi-teg, amasgoipelnos ag ot-go-ta-los.
 Tôgo siste-oe-ieg nagoeg minon-sis, tan oi-ga - ti - genel
 te - li-ag. Oasôg eli o-na - gi-es, o-tjel ogti-na-gang
 e - pi-tjel. Aptj natel ogtji o-li pgi-sin-teo natji tpe-lo-
 ma-ta oesgi-tji-nolti-li-tji ag iaptji-ne-li tji, tôgo tli-sip
 mā po-na-pe-nog ogtial-so-sin. Elp e-li getlam-se-tem sis-
 te-oe-it tan tetpi sag-ma-oit ag notji osgi-tji - no-a-lo-et,
 tôgo na oetji o-li Nis - ga - me-oit oage-la tapo-si-tjig
 Oegoi-sit ag E ogtjit. Negem elp oitji mtôgoalgo-si-ti-tjel



ag oitji magelmogsi-ti-tjel Oegoi-sit ag E-og-tjit; na negem
nigani gtji-tji-te-ge-oi - no oe-ton-ga-se-ni. Eli getlamse-
tem tau te-si-titj neo-gto-pe-migsi oig-ma-oi o-li a-la-sot-
me-oi-nog, tanig eta ogtalasot-ma-ga-noôo tet - li mel-gi-
po-goa- ta-sig apostale-oi gi-namaso-tig-tog. E-li paga-
pogoatem neog-tetjg si-genta-soti; tôgo na oe-tji me-niag
te - lo - e - o - ti. Ag esgi-pe-to nep-gig a - pi-tji-
pati - titj. Ag oetj-go-iag iaptji os-gi-tji-no-ti. A -
men, a - men.

SANCTUS

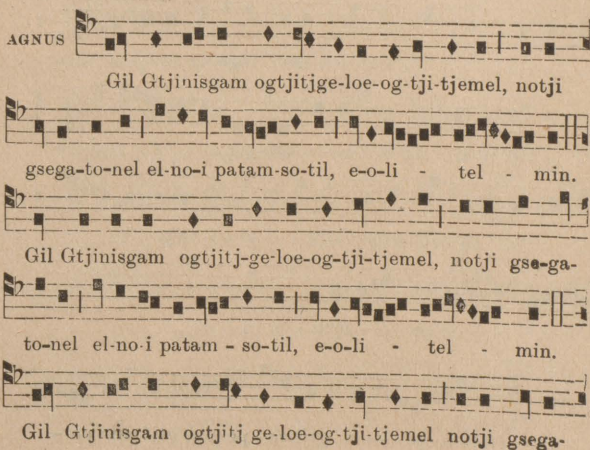


Gtji-sa - pe - oin, gtji-sa - pe-oin, gtji-sa - pe -

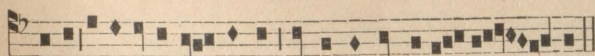


oin sagma-oin Nisgam sa - pôt. Oasôg ag maga-mi-geo
 mesta oatjo-te-gel te-li gsegel-mog-sin. O - sa-na
 gtji-pge - ta-ig. Gepmi moioalj-go-sit-
 tan ni-getj Gi sol - gol elgimtjel nti- ni-nenag. O -
 sa-na gtji - pge - ta-ig.

AGNUS



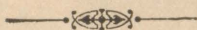
Gil Gtjinisgam ogtjitjge-loe-og-tji-tjemel, notji
 gsega-to-nel el-no-i patam-so-til, e-o-li - tel - min.
 Gil Gtjinisgam ogtjitj-ge-loe-og-tji-tjemel, notji gse-ga-
 to-nel el-no-i patam - so-til, e-o-li - tel - min.
 Gil Gtjinisgam ogtjitj ge-loe-og-tji-tjemel notji gsega-



tonel el-no-i pa-tam-so-til, ig-ne-mo-in nol-an-goa - nen.



ITE De - o - - - gra-ti-as.



GITJINO MALI OTALAMESEM

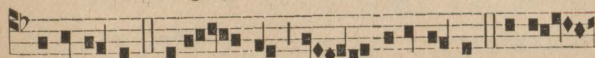
Elp agantieoti gisi toaltingeoei

Messes de la Sainte Vierge



KYRIE

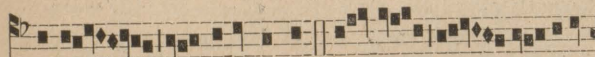
Nis - gam e - o-li-telmin. Nis-gam e -



o-li-telmin. Nis - gam e - o-li-telmin. Sesos



e - o-li-telmin. Se - sos e - o-li-telmin.



Sesos e - o-li-telmin. Nis-gam e - o-li-



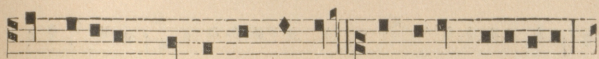
telmin. Nis - gam e - o-li-telmin. Nis-gam e -

e - e - o-li-

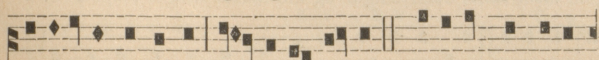
telmin.

GLORIA

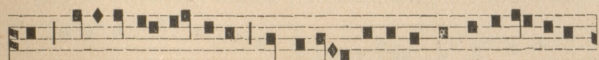
Ag ogsitga-mog tli olan-goatitj elnog
 tanig oeli gsalgoi-ti-tjel Gi - solgol. Gepmi - telmoleg. Em-
 tô - goalneg. Mesta peigoei gsi - telmoleg. Me - gi - tel -
 m leg. Gil mesta gse-gel - mogsin na oetji mo-io - al-
 neg. Gil oesagma-mi-eg Nis-gam pge-ta-ig e-le - ge-oin,
 Nisgam Oe-goisin mset gôgoel ne-ta-oi - to-nel. Gil oesag-
 ma-mi-eg neogti-gin E-og-tjin Se - so - go-li. Gil sagma-
 oin Nis-ga-me-oin, gil Gtji-nisgam ogtjitjgeloegtji-tjemel,



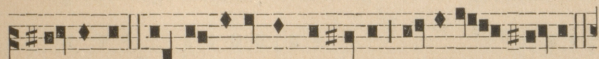
gil oegoi-sit Gtji-nisgam gti-nin. Gil notji gsegatonel



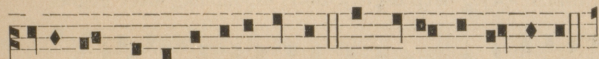
el-no-i patam-so-til, e - o-li - telmin. Gil notji gse-ga-to-



nel el-no-i patamsotil, tóg te-li e-la-so-mo-legel e-o-lis-



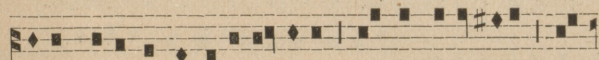
te-mo-in. Gil gotj ogti-nagang e-pin e - o-li - telmin.



Gil ô-gotj neogti ptji li sa-pe-oin. Gil neogti gtji sagma-oin.



Gil neogti peigoei gsi-tel-mogsin Se - so - go-li. Ag metj



nigetj tetpi sagma-oitelmogsi-ôg Gotj ag Oetji- o-li Nis-



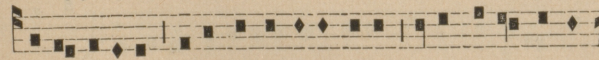
gam. A - men.



CREDO

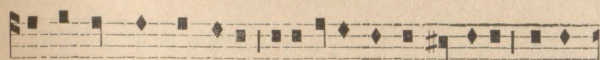
*Tan lei gisna 2ei teli
msegig nagela eomegel.*

Oe goisit mset gô-goel tan, te-li-tet-



gel te la-tigel, netna negem gi-si-tôgsep casôg ag ma-ga-mi-

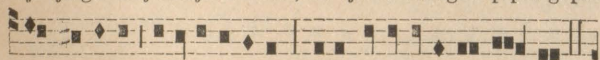
geo, mset tanel nemitemgel ag mo nemitemegel tetpi gi-si-
 tôg-se-penel. E-li getlamsetem elp neogte-tjit tan me-na-gatj
 oesagmamoltigo Se-so - go-li, na Gtjinisgam ogoisel neogti-
 gi li-tjel Otjeg oetji osgi-tji-no-it esgomenag mset gôgoel
 gi-si-ta-si-nogoeg. Nisgame-oigtog oetji nisgame-oit, pagta-
 tegigtog pa oetji pagta-teg; getel pa Nisga-me-oigtog anse-
 ma pa oetji nisgame-oit. Otjeg oetji-git, mo sga-to gi-si-ta-
 sigo, Otjel neogta-mog-si-ti-tjel; na negem oetji ma-oi gi-
 si-ta-sigsepenel mset gôgoel. Oasôg oetji pge-oi-es gi-no pa
 ogtjit elnoltigo, ag elp ogtjit ge-to-i og-se-ta-olgoeg, Ma-



li nasgoet ogte-la-milog oetjatôgse-pe-neg oa geieg, ag og-



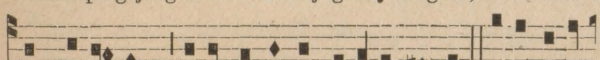
tji-tja-ga-mitja oetja-la-se-na, Oe-tji-o-li Nis-gam piptô-gôps-



ga - la-senel, elno-a-la-se-nel, tô-go na te-li el-no - a - sis.



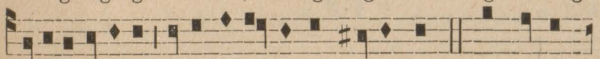
Gino elp ogtjit gti-ni-neno oetji glo-tji-e-ogtôs, Pons Pi-la-



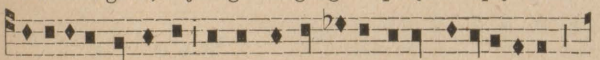
tôg sagma-oiteg, amasgoipelnos ag otgo- ta-los. Tôgo siste-



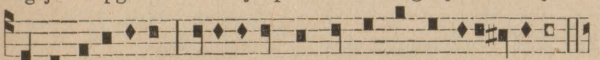
oe-ieg nagoeg mi-nonsis, tan oiga ti-ge-nel te-li-ag. Oa-sôg



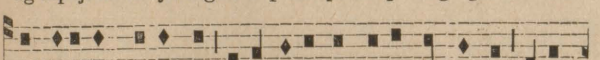
e-li o-na-gi-es, Otjel ogti-nagang e-pi-tjel. Aptj natel



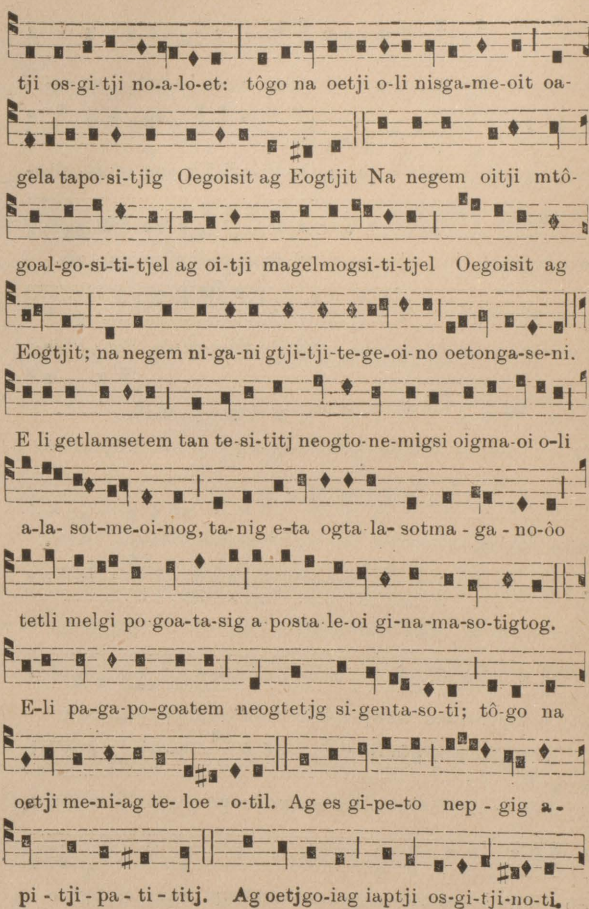
ogtji o-li pgisinteo na-tji tpe-lo-mata oesgi-tjinolti-li-tji



ag iaptji ne-li-tji: tôgo tllisip ma po-na-pe-nog ogtials-sin.



Elp e-li getlamse-tem siste-oe-it tan tetpi sagma oit ag no-



tji os-gi-tji no-a-lo-et: tōgo na oetji o-li nisga-me-oit oa-

gela tapo-si-tjig Oegoisit ag Eogtjit Na negem oitji mtō-

goal-go-si-ti-tjel ag oi-tji magelmogsi-ti-tjel Oegoisit ag

Eogtjit; na negem ni-ga-ni gtji-tji-te-ge-oi-no oetonga-se-ni.

E li getlamsetem tan te-si-titj neogto-ne-migsi oigma-oi o-li

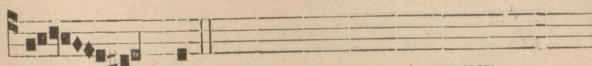
a-la-sot-me-oi-nog, ta-nig e-ta ogta-la-sotma-ga-no-ōo

tetli melgi po-goa-ta-sig a posta-le-oi gi-na-ma-so-tigtog.

E-li pa-ga-po-goatem neogtetjg si-genta-so-ti; tō-go na

oetji me-ni-ag te-loe-o-til. Ag es gi-pe-to nep-gig a-

pi-tji-pa-ti-titj. Ag oetjgo-iag iaptji os-gi-tji-no-ti.

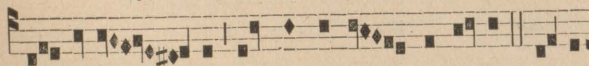


A - men.



SANCTUS

Gtji - sa - pe - oin, gtji - sa - pe - oin,



gtji - sa - pe - oin sag - ma - oin Nis - gam sa - pô - t. Oa - sô - g



ag ma - ga - mi - geo mes - ta oa - tjo - te - gel te - li gse - gel - mog -



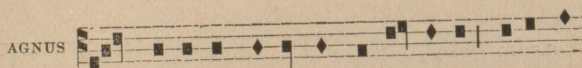
sin: O - san - na gtji - gpe - ta - ig. Gpmi mo - io - al - go - sitj



tan ni - getj Gi - sol - gol elgimtjel nti - ni - ne nag: O -



san - na gtji - gpe - ta - ig.

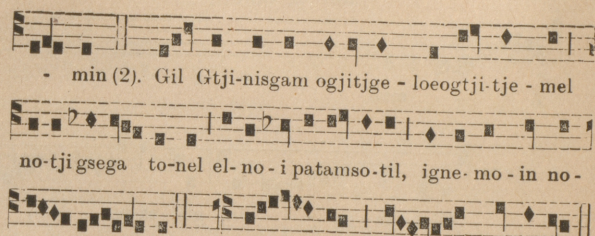


AGNUS

Gil Gtjinisgam ogtjitjge - loeogtji - tje - mel no - tji gse -



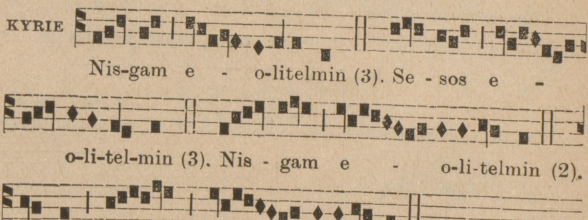
ga - to - nel el - no - i pa - tam - sotil, e - o - li - tel -



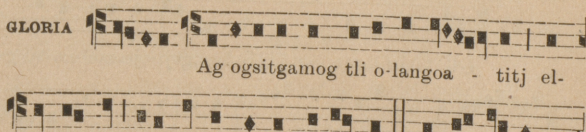
- min (2). Gil Gtji-nisgam ogjitjge - loogtji-tje - mel
no-tji gsega to-nel el-no-i patamso-til, igne-mo-in no-
lan - goa - nen. De - o gra-ti-as.

AGENTIEOIMGEOEI AG PESTIEOIMGEOEI
GISE PAGEOIMGEG

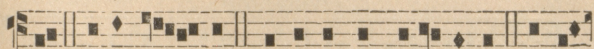
Messes du Temps Pascal.

KYRIE 

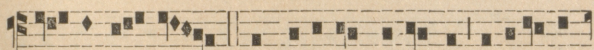
Nis-gam e - o-litelmin (3). Se - sos e -
o-li-tel-min (3). Nis - gam e - o-li-telmin (2).
Nisgam e - o-litelmin.

GLORIA 

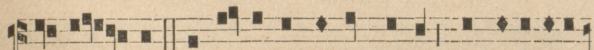
Ag ogsitgamog tli o-langoa - titj el-
nog ta-nig oeli gsalgoi-ti-tjel Gi-sol-gol. Gep-mi-tel-mo-



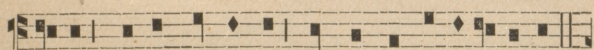
leg. Emtô-goal - neg. Mesta peigoei gsitele-moleg. Me-gi-



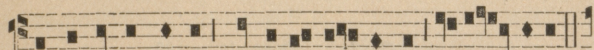
tel- mo-leg. Gil mesta gse-gelmogsin na oetji mo-



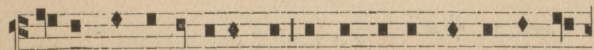
io- al - neg. Gil oe-sagma-mi-eg Nisgam pge-ta-ig e-le-



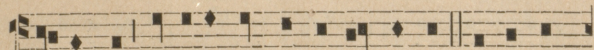
ge-oin, Nisgam Oe-goi-sin mset gô-goel ne-ta-oi-to-nel.



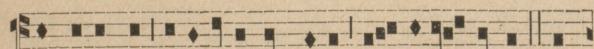
Gil oe-sagma-mi-eg neog-ti-gin E - og-tjin Se-so - go-li.



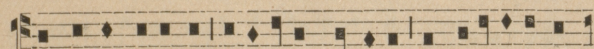
Gil sag-ma-oin Nisgame-oin, gil Gtjinisgam ogtjitj-ge-loeog-



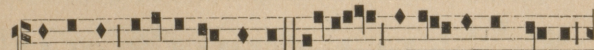
tji-tje-mel, gil oegoi-sit Gtjinisgam gti-nin. Gil no-tji



gse-ga-to-nel el-no-i patam-so-til, e - o-li - telmin. Gil



no-tji gse-ga-to-nel el-no-i pa-tamso-til, tóg te-li e-la-so-




mo-le-gel e-o-lis-te-mo-in. Gil Gotj og-ti-na-gange-pin,



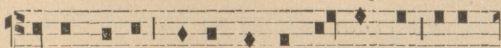
e - o-li-tel-min. Gil ô-gotj neogti ptji-li sa-pe-oin. Gil
 neogti gtji-sag- ma-oin. Gil neogti peigoei gsitelmogsin
 Se- so - go-li. Ag metj nigetj tetpi sagma-oi-telmog-si-ôg
 Gotj ag Oe-tji-o-li Nisgam. A - men.

Credo.... Oegoisit, n. 49.

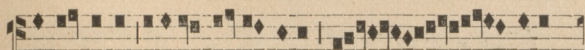
SANCTUS 

Gtji-sa-pe-oin, gtji-sa-pe-oin, gtji - a - pe-oin
 sagma-oin Nisgam sa - pôt. Oa - sôg ag ma-ja-mi-geo
 mesta oa-tjo-te-gel te-li gse-gelmogsin: O-sar-na gtji-
 pge-ta-ig ! Gepmi mo-io-al - go-sitj tan nigetj si-sol-gol
 elgimtjel nti-ni-ne-nag : O - sanna gtji - ge-ta-ig !

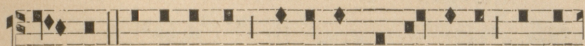
AGNUS



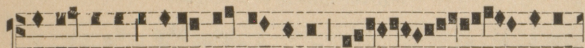
GilGtjinisgam ogtjitj-ge-loeogtji-tje-mel, notji



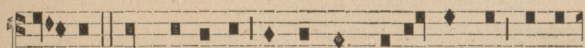
gsega-tonel elno-i patamsotil, e - - o-li-



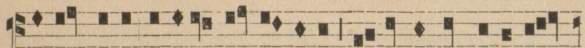
tel-min. Gl Gtjinisgam ogtjitjge-loeogtji-tjemel, no-tji



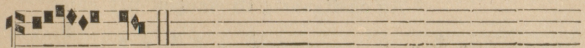
gse-ga-tonelelno-i pa-tamsotil, e - - o-li-



tel-min. Gl Gtjinisgam ogtjitj-ge-loeogtji-tje-mel, no-tji

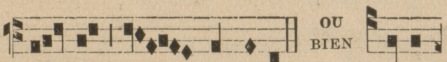


gse-ga-to-ne el-no-i pa-tamsotil, ig-ne-mo-in no-langoa-



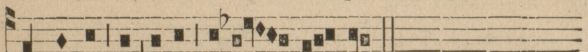
- nel.

ITE, MISSA EST



De - o gra-ti-as *gisna* De-o

OU BIEN



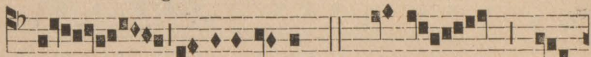
gra-ti-as, alllu-ia, alle - lu - ia.



PESTIEOIMGEOEI 3ei TELI MSEGIG

Messes des Fêtes Doubles (6e ton).

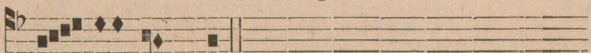
Nis - gam e - o-li-tel-min (3). Sesos



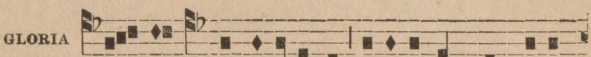
e - o-li-tel-min (3). Nis-gam e -



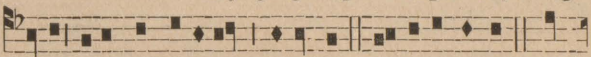
o - li - tel - min (2 . Nisgam e - - -



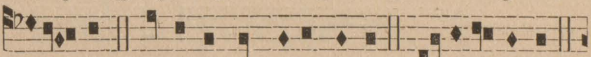
oli - tel - min.



Ag ogsitgamog tli olangoa - titj elnog



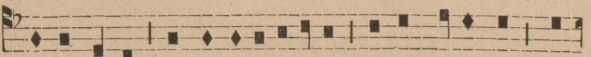
tanig oeli gsalgoi-titjel Gisol-gol. Gepmitelmoleg. Em-



tôgoalneg. Mesta peigoei gsitel-moleg. Me-gitel-moleg.



Gil mesta gsegelmogsin, na oetji moio-alneg Gil oesagma-

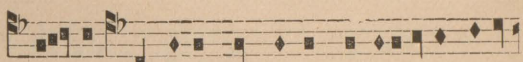


mi-eg Nisgam gpe-ta-ig elege-oin, Nisgam Oegoi-sin mset

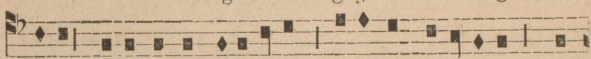
gôgoei ne-ta-oi-to-nel. Gil oesagmami-eg neogti-gin Eogtjin
 Se - so-goli. Gil sagma-oin Nisga-me-oin, gil Gtji-nis-
 gam ogtjitjge-loeogtji-tje-mel, gil Oegoisit Gtji-nis-gam
 gti-nin. Gil notji gse-ga-to-nel el-no-i patamsotil, e- o-li-
 telmin. Gil notji gsegatonel elnoi patamsotil, tôg teli e-la-
 somo-legel eolistemoin. Gil gotj ogtinagang epin e- o-li-
 telmin. Gil ôgotj neogti ptjili sapeoin. Gil neogti gtji-sag-
 maoin. Gil neogti peigoei gsitei-mogsin Sesogoli. Ag metj
 nigetj tetpi sagmaoi telmogsioğ Gotj ag Oetji-o-li Nisgam.

▲ - men.

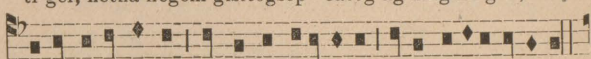
CREDO



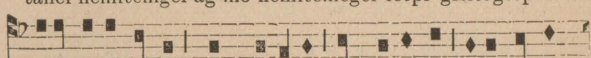
Oe-goisit mset gôgoel tan telitetgel te-la-



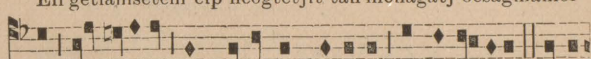
ti-gel; netna negem gisitôgsep oasôg ag magamigeo; mset



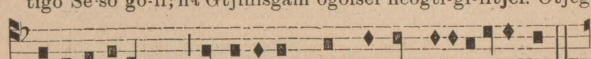
tanel nemitemgel ag mo nemitemgel tetpi gisitôgsepenel.



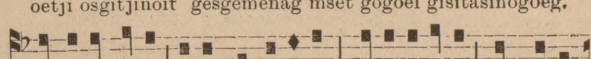
Eli getlamsetem elp neogtetjit tan menagatj oesagnamol-



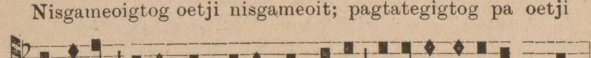
tigo Se-so go-li; na Gtjinisgam ogoisel neogti-gi-litjel. Otjeg



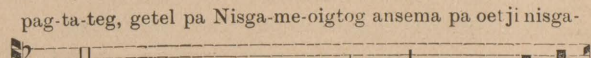
oetji osgitjinoit gesgemenag mset gôgoel gisitasinogoeg.



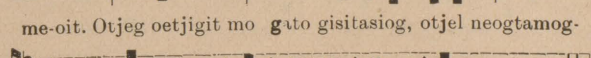
Nisgameoigtog oetji nisgameoit; pagtategigtog pa oetji



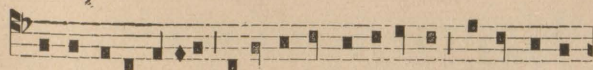
pag-ta-teg, getel pa Nisga-me-oigtog ansema pa oetji nisga-



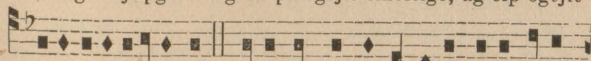
me-oit. Otjeg oetjigit mo guto gisitasiog, otjel neogtamog-



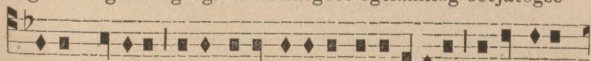
si-titjel; na negem oetji maoi gisitasigsepenel mset gôgoel.



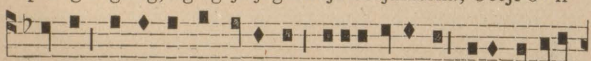
Oasôg oetji pgeioes gino pa ogtjit elnoltigo, ag elp ogtjit



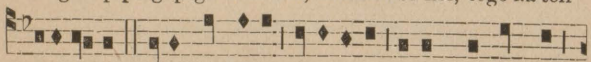
ge-to-i ogsetaolgoeg. Mali nasgoet ogtlamilog oetjatôgse-



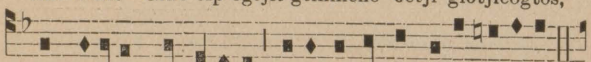
peneg oageieg, ag ogtjitjagamitja oetjalasena; Oetji-o - li



Nisgam piptôgôpsga-la-se-nel, elnoa-la-se-nel, tôgo na teli



elno-a-sis. Gino elp ogtjit gtinineno oetji glotjieogtôs,



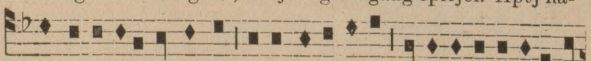
Pons Pilatôg sagmaoiteg, amasgoipelnos ag otgotalos.



Tôgo sisteoeieg nagoeg minonsis tan oigatigenel teliag.



Oa-sôg e-li o-na-gi-es, O-tjel ogtinagang epitjel. Aptj na-



tel ogtji oli pgsinteo natji tpelomata oesgitjinoltitiji ag



iaptji nelitji, tôgo tlisip ma ponapenog ogtialsosin. Elp



eli getlamsetem sisteoeit tan tetpi sagmaoit ag notji



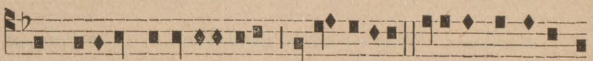
osgitjinoaloet, tô-go na oetji oli nisgameoit oagala tapo-



sitjig Oegoisit ag Eogtjit. Na negem oitji mtôgoalgosi-



titjel ag oitji magelmogsititjel Oegoisit ag Eogtjit; na ne-



gem nigani gtjitjitegeoino oetongaseni. Eli getlamsetem



tan tésititj neogtonemigsi oigmaoi oli alasotmeoinog,



tanig eta ogtalasotmaganoôo tetli melgipogoatasig a-pos-



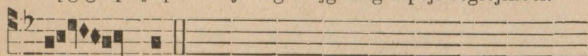
taleoi ginamasotigtog. Eli pagapogoatem neogtetjg sigen-



tasoti, tôgo na oetji meniag telo - e-o-til. Ag esgipeto



nepgig apitji-pa-tititj. Ag oetjgo-iag iaptji osgitjinoti.



A - men.

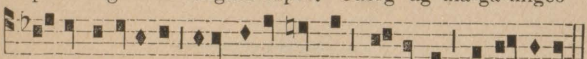


SANCTUS

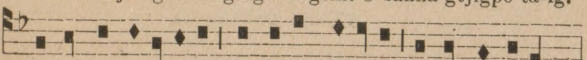
Gtji-sape - oin, Gtji - sape-oin, Gtji-sa -



peoin sagmaoin Nisgam sapôt. Oasôg ag ma-ga-migeo



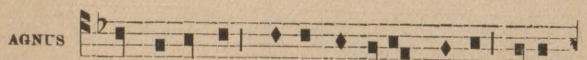
mesta oatjotegel teli gsegelmogsin: O-sanna gtjigpe-ta-ig.



Gepmi mo-io-algositj tan nigetj Gisolgol elgimtjel gtini-

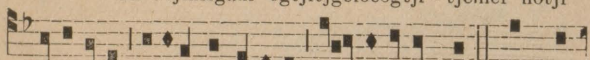


nenag: Osan - na gtjigpe-ta-ig.

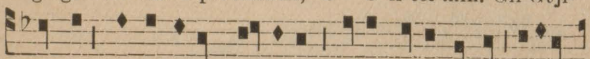


AGNUS

Gil Gtjinisgam ogtjitjgeloeogtji - tjemel notji



gsegatonel elno-i patamsotil, e - o - li-tel-min. Gil Gtji-

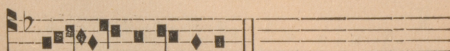


nisgam ogtjitjge-loeogtjitjemel, notji gsega-to-nel elno-i



patamsotil, e - o-li-telmin. Gil Gtjinisgam ogtjitjge-
 loeogtji-tjemel, notji gsegatonel elno-i pa-tamsotil, igne-
 moin nolangoanen.

ITE MISSA EST



De - o gra-ti-as.



ANSALEOITEOEI

Messe des Anges.

KYRIE



Nis - gam e - - - o-li - tel -
 min (3). Se-sos e - - - o-li-telmin (3).
 Nis-gam e - - - o - li - telmin (2). Nis -
 gam e - - - o-li-telmin.



