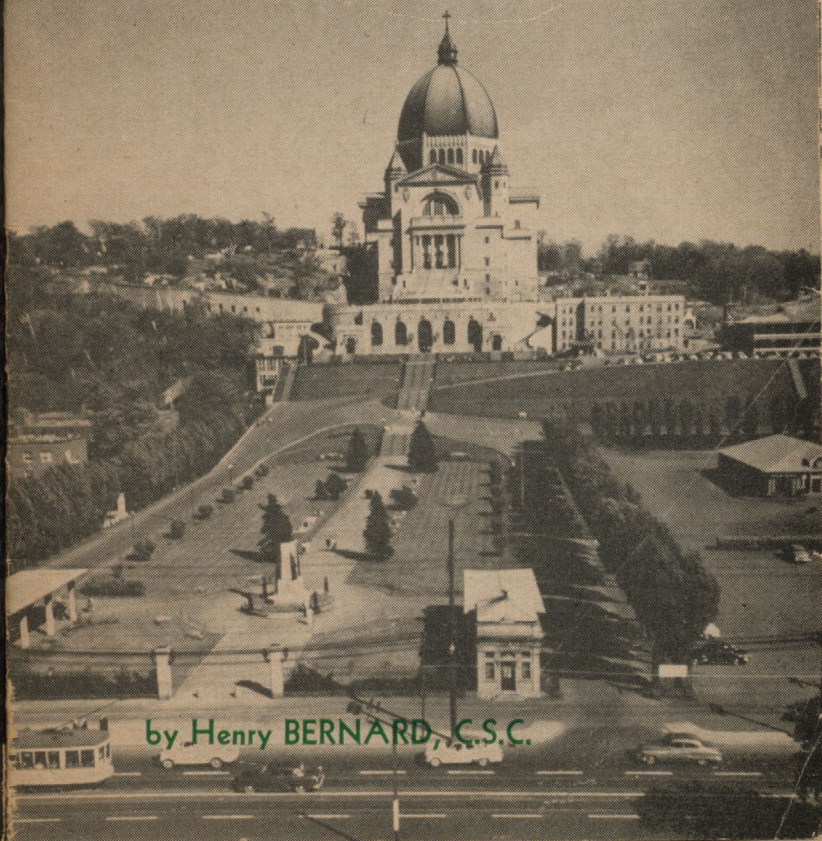


Your

ARROW-GUIDE

15¢

at
SAINT JOSEPH'S ORATORY
of MOUNT ROYAL



by Henry BERNARD, C.S.C.

R.B.D. DUNCAN 10470

Dorothy E. Jusler.
Canadiana Collection
Quebec Prov.

Welcome
to Saint Joseph's Oratory!

THE RELIGIOUS OF HOLY CROSS in charge of this world-famed Shrine in honor of Saint Joseph extend a most cordial welcome to you. We hope you enjoy your visit of the Shrine. This little ARROW-GUIDE book precisely aims to help make your tour of the premises both pleasant and spiritually beneficial.

Whether you profess the Catholic Faith or not, we like to believe that your visit of the Oratory will profit you in more ways than one, and primarily in exemplifying the need and the power of spiritual values in our present-day world.

Catholic visitors, we know, will want to make this a devotional tour or pilgrimage. Needless to say we thoroughly favor this approach.

Non-Catholic guests on the other hand no doubt will wish to observe the reverence and quiet becoming surroundings so holy, and to avoid anything that might distract the pilgrims in prayer.

-
- NIHIL OBSTAT :
Pierre-M. Poisson, C.S.C., *Censor.*
Montreal, July 18, 1955.
 - IMPRIMI POTEST :
Armand Grou, C.S.C., *Vice-Sup. Prov.*
Montreal, July 19, 1955.
 - IMPRIMATUR :
Paul Touchette, P.A., V.G.
Montreal, July 19, 1955.

Third printing

40th
thousandth



PLEASE NOTE

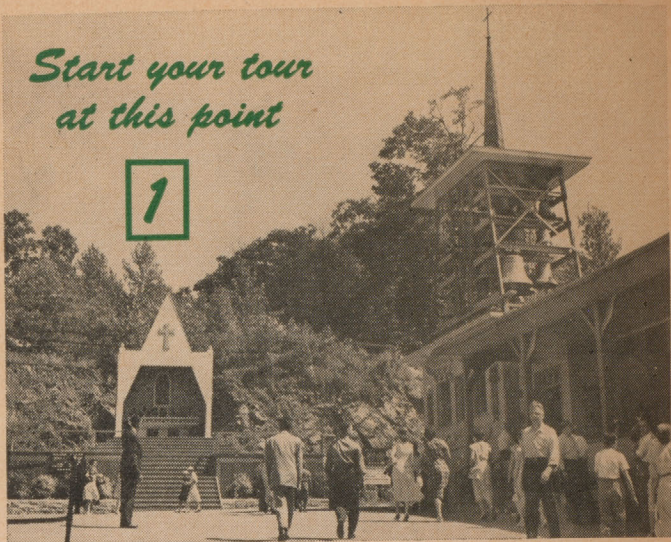
- 1 —** Visitors are requested to be modestly attired; shorts, pedal-pushers and sun dresses are not considered as proper on the grounds.
- 2 —** The ladies are further requested to wear a hat or kerchief in church.
- 3 —** Kindly avoid walking through the church during services.
- 4 —** Flash pictures may be taken indoors except during services.

15.
MOU
T L
2862-VBS

1953

*Start your tour
at this point*

1



- **OPEN-AIR ALTAR** for outdoor services on occasions.

Benediction of the Blessed Sacrament is given here at the close of the candlelight processions conducted on the grounds in the evening on festive occasions during the Summer season.

- **THE CARILLON** : This 60-bell chime set is the third largest in North America. The inaugural concert was given in the Spring, 1955. These bells, originally intended for the Eiffel Tower in Paris, were cast by the famous firm Paccard Bros. at Annecy-le-Vieux in France.

The present location of the bells is but temporary. Plans have already been drawn for a 200 ft. tower later to adorn a vast esplanade on the mountain-side.

Concerts on the chime set are scheduled regularly in the summertime every afternoon at 11.40, 2.30 and at 7.45 p.m.

Visitors are allowed inside during concert hours to watch the chime master at the keyboard.

A) ENTRANCE to the votive chapel. This ramp entrance enables wheelchair patients and stretcher cases to accede easily to the crypt-church level. Ambulances may also drive right up to the door.

Facilities for invalids :

1) Every Wednesday afternoon a well-trained group of members of the Montreal Fire Department are on hand to act as stretcher-bearers.

2) At all times throughout the year, a competent staff of nurses and volunteer orderlies offer their services free of charge to pilgrims requiring special attention.

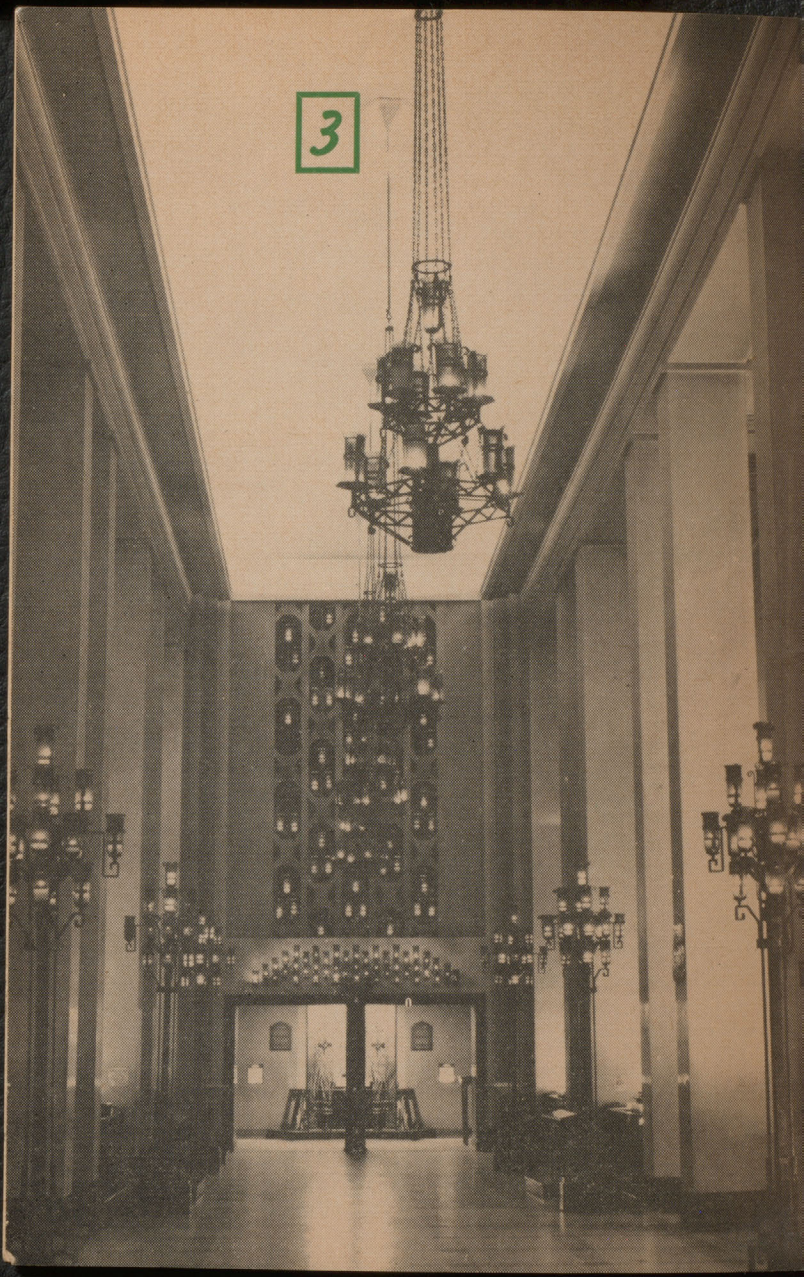
3) A dispensary is also kept open year round during services. The infirmary is located on the right hand side of this corridor.



B) CENTER OF RESEARCH and Documentation on St. Joseph : On the first floor above this hallway are located the headquarters of the Shrine's research center which has collected a wealth of documents concerning Saint Joseph. This Center carries out its activities in the various fields of art, theology and devotion connected with Saint Joseph. *Members of the clergy* are invited to visit the Center ; entrance through the sacristy on your left.

C) EDITORIAL OFFICE : On the second storey above this corridor is the editorial office of the Shrine's popular illustrated monthly boasting a circulation exceeding 200,000 copies. Published both in French and English, this magazine keeps its readers informed of events and progress at the Oratory, and features top quality articles on Saint Joseph.

3



The Votive Chapel

A) VIGIL LIGHTS : There are some 10,000 of them altogether in this annex. These vigil lights are lit by the pilgrims as so many *symbols* of their wish to remain in prayer. Life's duties make it impossible to pray for hours on end, so the pilgrims offer this symbol of their prayerful intentions.

B) THE PLAQUES or bas-reliefs above the lamp racks illustrate the titles which Holy Mother Church attributes to Saint Joseph in the Litany. An appropriate prayer for the various circumstances of life may be found on the kneeling benches before each plaque, for the convenience of the pilgrims wishing to pray to Saint Joseph in their needs.

C) TOKENS OF CLAIMS OF CURES : The crutches, braces and casts hanging between the pillars were left at the Shrine by grateful devotees who claim physical relief obtained through the intercession of Saint Joseph. The Shrine operates a Medical Record Bureau to ensure a scientific control of these claims of cures. For thorough information on the work of this Bureau, we recommend you avail yourself of the pamphlet entitled "What's What About the Oratory", on one of our pamphlet racks.

D) THE MAIN LAMP RACK : It carries 7,000 vigil lights. Overlooking the rack is a lovely statue of Saint Joseph in a quite significant attitude : Saint Joseph is pictured with his arms outstretched as if he were dispensing his blessings on those who have recourse to his intercession. The pedestal of the statue is a modern styling of a lily referring to the Saint's purity. The flow of water is also a symbol of the graces the Saint showers on his devotees.

E) THE RELIC OF ST. JOSEPH : On the railing in front of the main lamp rack is an authenticated relic of the Saint : a tiny particle of his clothes. The veneration or kissing of the relic is simply a *mark of respect* shown to this bit of cloth that belonged to a man who was great in the eyes of God.

4

Brother André's Tomb

DIRECTLY behind this main lamp rack one will find the nortuary chamber in which rest at peace the remains of Brother André, the Founder of the Oratory (1845-1937). No public or official cult may yet be given Brother André, since he is not beatified. However, it is the individual's privilege to pray to Brother André.

The fresco painting above the tomb is meant to illustrate Brother André's foremost devotion to the Passion of Christ.

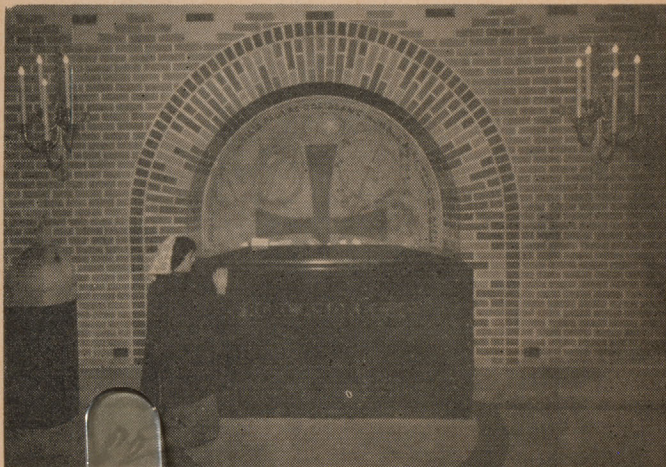
May we now suggest you offer here this prayer for Brother André's beatification ?

PRAYER

O Jesus, Thou who hast wished to propagate devotion to thine adopted father, Saint Joseph, through the efforts of Brother André, grant that the Church may glorify at the earliest opportunity, this faithful friend of the poor, the sick, and the afflicted! Amen.

You are also invited to add your name to the petition ist for Brother André's beatification, on the desk behind you.

Please turn right on leaving this alcove.



5

Saint Joseph's Oil



A) THE STATUETTE of Saint Joseph blessed for the Oratory by Saint Pius the Xth back in 1909. This little statue was officially crowned on August the 9th, 1955, by His Eminence Paul-Emile Cardinal Léger, Archbishop of Montreal, on authority of the Holy See. The coronation of this statue was one of the highlights of the Shrine's Golden Jubilee celebrations.

B) THE OIL BASIN

- 1) The use of oil to friction ailing limbs in a symbolic gesture of faith *originated* with Brother André who would recommend the use of oil in this manner to those seeking his help.
- 2) *Particulars* : The oil burns here at least 24 hours before it is bottled. After obtaining the oil (which may be had at the Pilgrims' Pavilion), pilgrims generally have it blessed at the General Office.



6

The Crypt-Church

A) PARTICULARS

Built in 1916, with a seating capacity of 1,000. This is called a crypt-church, because of its vault-like appearance and its position at the foot of the huge basilica.

B) THE STATUE OVER THE MAIN ALTAR

Cut out of white Carrara marble by an Italian artist, in 1917. Portrays Saint Joseph as the Patron of the Universal Church.

C) THE STAINED-GLASS WINDOWS

They describe various Gospel episodes with which Saint Joseph was connected: the dream of the saintly Patriarch, the Birth of Christ, the Circumcision, the Presentation in the Temple, the Flight into Egypt, Jesus found among the Doctors, Life at Nazareth and the Death of Saint Joseph.

SCHEDULE OF SERVICES

1 — *Week-days :*

Masses at 6.00, 6.30, 7.00, 7.30, 8.00, 8.30 a.m. and at 12.15, 9.15 p.m.

Novena devotions in French and Benediction at 3.00 p.m. and 8.15 p.m.

Novena devotions in English for pilgrimage groups at any time by special arrangement with the Pilgrimage Director.

2 — *Wednesdays :*

Special service for invalids at 2.30 p.m.

3 — *Fridays :*

Holy Hour at 8.15 p.m.

4 — *Sundays :*

Masses every hour on the hour from 6.00 to 11.00 a.m. Last Mass at 12.30 p.m.

Novena devotions in French at 3.00 and 8.15 p.m.

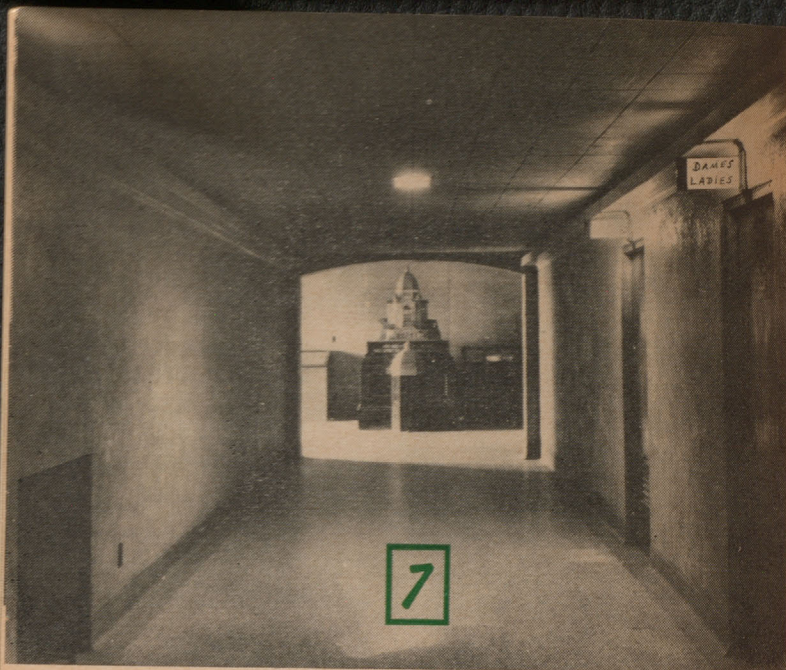
Novena devotions in English at 4.15 p.m.

5 — *Solemn Annual Novenas :*

In English, March 10 to 19, and August 1 to 9, at 8.15 p.m.

6 — *Confessions* are heard all day except at lunch and dinner hours.

*Leave through the exit underneath
the organ left.*



A) REST and POWDER ROOMS

We beg your co-operation in maintaining the utmost cleanliness of the rest-room facilities.

B) SCALE MODELS

● Over-all view of the building as it now stands.

In excess of \$8,000,000. have already gone into this project. The building funds are contributed voluntarily by visitors and pilgrims, either claiming or seeking favors through Saint Joseph and Brother André. Sizeable donations should be turned in at the General Office (*refer to no. 17*) where they will be duly acknowledged with an official receipt.

●● Length and side views of the interior of the basilica as it is presently being decorated. The two alternating lighting systems show how the upper church will look in the daytime and at night.

The plans of the interior decoration were sketched by a French artist, the late Father Paul Bellot, o.s.b., and their materialization has been awarded to the Labouret Studios of Paris.



C) FRESCO PAINTING

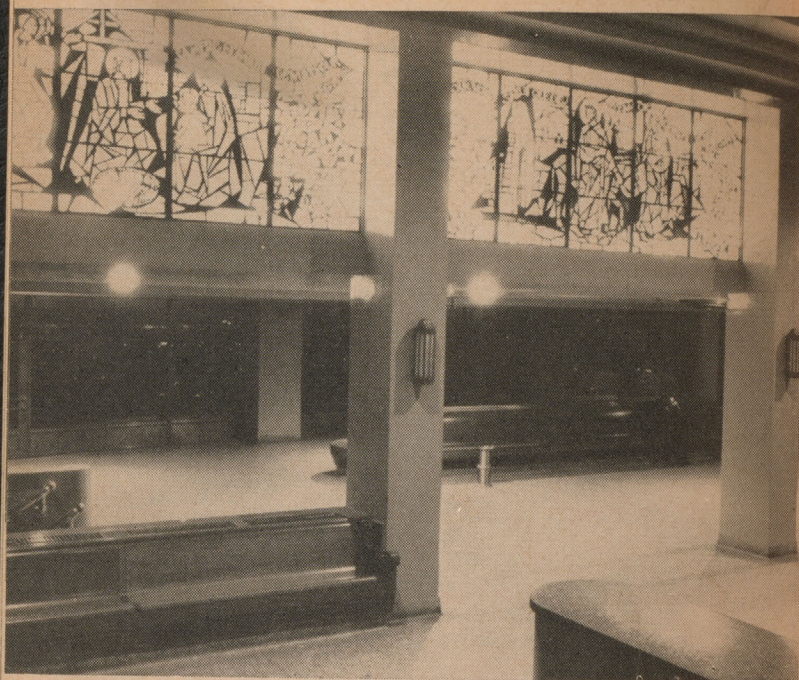
The fresco painting on the wall above the escalators was done by a French artist of Lille. It highlights the Shrine's Golden Jubilee in 1954-55 and portrays the part Saint Joseph plays in all walks of Christian life.

D) STATUE OF B.V.M.

The statue of the Blessed Virgin Mary at the bottom of the escalators was donated to the Oratory practically at the outset of the Shrine. It first stood outside close to the original chapel, was then removed under the portico of the basilica and was recently renovated and installed in this entrance hall as a witness of the Shrine's progress over the years.



*And now, ride up
the escalators.*



8

The Concourse Hall

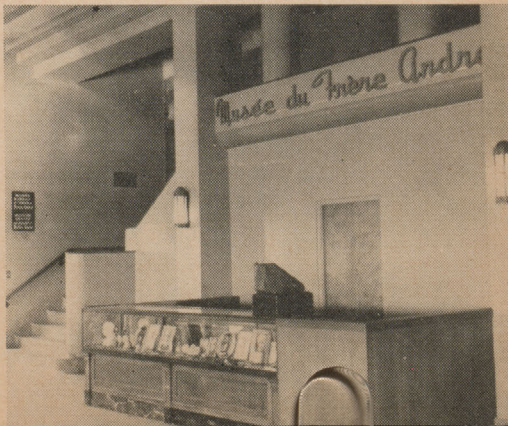
- This hall affords the visitors facilities for a few moments of pleasant relaxation on their tour of the premises. Seats overlooking the crypt roof, drinking taps and rest-rooms are conveniently located here.
- At the far end of this hall is an alternate entrance to the Auditorium one flight down.
- The stained-glass windows at ceiling level illustrate the Flight into Egypt, the Holy Family's sojourn in the land of the Pharaoh and the safe return to the Holy Land. Credit for these windows done in the style of the best craftsmen of old goes to the Labouret Studios of Paris.

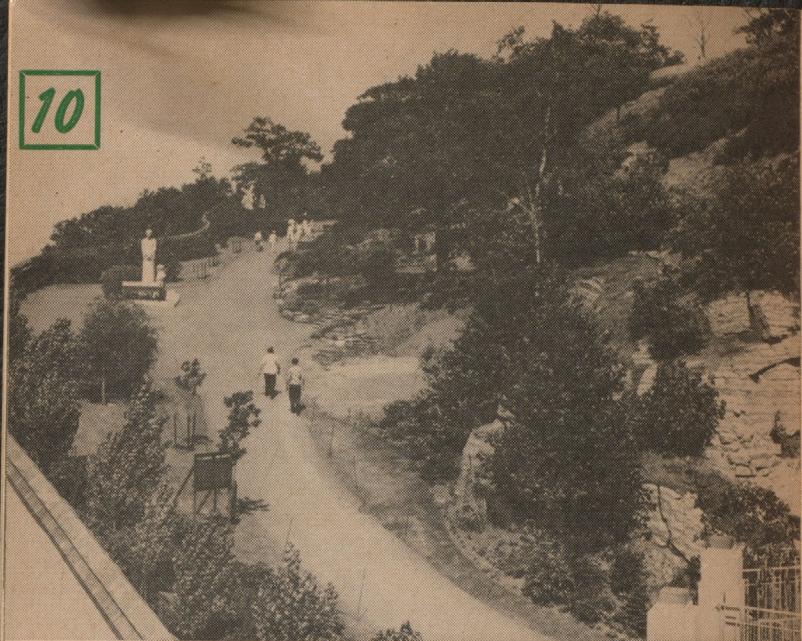
The Museum of Brother André

- A) **THE SHOWCASES** in both the entrance and exit hallways contain exhibits of odds and ends connected with the Founder of the Shrine : pictures of him, various documents, his clothes, etc.
- B) **HIS DOORKEEPER'S CELL** an exact reproduction of the little room he occupied for some forty years across the road at Notre Dame College.
- C) **HIS OFFICE** : This is the office where Brother André used to keep his appointments with pilgrims. This office was originally located next to the primitive chapel.
- D) **THE HOSPITAL ROOM** in which he died in 1937. The walls, the floor and the furnishings are original and were released to the Oratory by the nursing Sisters of Hope.
- E) **HIS HEART**, preserved in an alcohol compound, has been kept as a symbol of Brother André's love for his fellow-beings. Many pilgrims drop petitions of all sorts behind the wrought-iron enclosure.
- F) **THE AUDITORIUM**, with a seating capacity for 250, serves for motion picture showings of a film on Brother André to organized pilgrimage groups.

The museum entrance

The life-like figures in the exhibits are plaster models covered with a thin layer of wax. They were cast by a Montreal artist, Mr. Joseph Guardo.





The Stations of the Cross

on the mountain-side

- A) **Origin** : The glorified materialization of one of Brother André's pet projects.
- B) **Purpose** : To afford pilgrims the seclusion and surroundings conducive to prayer out in the open.
- C) **The statues** adorning the grotto, the stations and the fountain have been hailed as a credit to Canadian art.

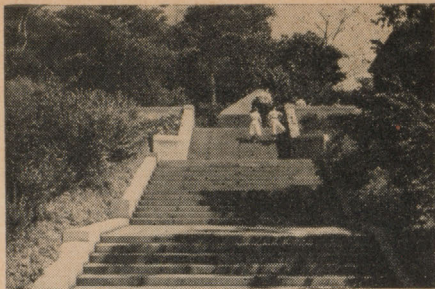
Models by Mr. Louis Parent, a native French-Canadian artist.

Stone-cutting by Mr. Ercolo Barbieri.

Material : Indiana-buff stone.

Landscaping by the late Frederick G. Todd.

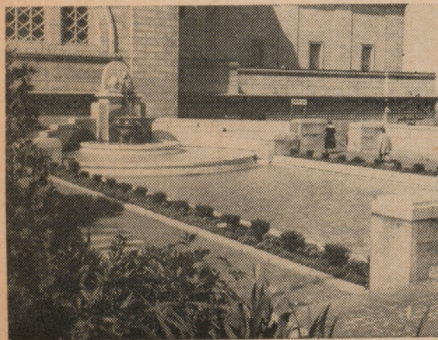
D) *The monument of the Resurrection* graces the crest of the mountain as a symbol of Christ's glorification following his Passion.



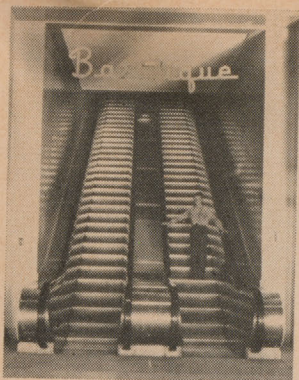
E) *The pool and fountain* offer suggestions for a wealth of meditation on Christian life. From the golden lamb's side flows a stream of water, symbolic of the grace of God. The fawns symbolize respectively the virtues of faith, hope and charity. The four sets of fishes in the pool exemplify justice, prudence, fortitude and temperance.

Kindly refrain from the superstitious practice of throwing coins in the fountain.

These mountain gardens thus enable pilgrims to reflect on the Agony of Christ, his Passion, his Glorification and the predominant virtues of the Christian way of life.



Exit at the far right hand corner of the pool and fountain. Go back to the Concourse Hall for no. 11.



Permanent Exhibition on Saint Joseph

The world's first permanent exhibition on Saint Joseph is open to all visitors and pilgrims.

Organization : The numerous exhibits have been carefully prepared by the Shrine's artistic committee along with the co-operation of all the Canadian religious institutes.

Exhibits :

- The life of Saint Joseph (9 life-size scenes)
- Devotion to St. Joseph in the history of Canada (10 model settings and 9 cut-out panels)
- Devotion to St. Joseph in the religious institutes of Canada (40 exhibits)
- Canadian religious orders under St. Joseph's patronage (15 displays)
- Canadian shrines dedicated to St. Joseph (10 panels)
- Saint Joseph's apparitions
- Saint Joseph in art

Visiting hours :

From 9.00 a.m. to 10.00 p.m. except during the evening Mass.

*The admission
fee includes
the cost of
a detailed guide
booklet.*



12

The Basilica

Cornerstone laid in 1924. The exterior is completed and the interior decoration is underway.

Built of solid Canadian silver granite and reinforced concrete.

Main heating system : radiant heat in the floor.

Date of completion : unknown.

Dimensions :

Over-all length : 341 ft.

Width across the wings : 210 ft.

Width of the nave : 120 ft.

Height from floor to ceiling in the nave : 100 ft.

Height from floor to top of inner dome : 195 ft.

Height from floor to cross atop the outer dome :
316 ft.

Capacity : 10,000 standees.

Dome :

The *inner* shell is 85 ft. in diameter.

The *outer* dome :

Diameter : 125 ft., which makes this second in size only to Saint Peter's in Rome.

Height : 146 ft.

Towers over 500 ft. above the street level.

Style of architecture : Predominantly Renaissance with a few modern features particularly as regards the cupola. The colonnade on the façade is Corinthian.

We suggest you take a look at the panorama from the portico before you proceed to no. 13 out through the exit in the right wing.



13

The Original Chapel



- The original shrine consisted only of the sanctuary of the chapel as it now appears. It was only 18 x 15 ft. in size. Built in 1904 by Brother André and a confrère, the late Brother Abundius, c.s.c.
- The nave and steeple were added in 1910.
- The altar and other furnishings in the sanctuary are original.
- The chapel was severely damaged by fire in February 1951, but painstakingly restored to its original condition.
- It was relocated three times, and this no doubt will remain its permanent location much akin to the original, secluded surroundings.

*Mass is offered every morning at 7 o'clock,
and the Blessed Sacrament is permanently
kept here.*

Priests wishing to say Mass on this altar may do so by arrangement with the sacristan.

AND NOW, in order that your visit of the Oratory may be a truly *devotional* tour, may we suggest that you take advantage of the peace and quiet of these surroundings to offer a few prayers to your first host at the Shrine, namely, Saint Joseph.

For your convenience, we include here the prayers of the perpetual novena in honor of Saint Joseph.

Prayers to Saint Joseph

The Memorare

REMEMBER, O most chaste Spouse of the Virgin Mary, that never was it known that any one who implored thy help and sought thy intercession was left unassisted. Full of confidence in thy power, I fly unto thee, and beg thy protection. Despise not, O Foster-Father of the Redeemer, my humble supplication, but in thy bounty, hear and answer me. Amen.

(500 days ind.)

An Act of Consecration

GLORIOUS Saint Joseph, august head of the Holy Family, God chose thee among men to be the protector of the Child Jesus and the guardian of the Blessed Virgin. To thee whom the Church honors as its patron, we joyfully come to consecrate ourselves to thy love and to be thine adopted children. We feel the great need of thy benevolent protection. Alas! our weakness and proneness to evil, amid the scandals of our day, would cause us to perish, but for thy protecting arm. O good Saint Joseph, look down on us from heaven, where thou dost reign with Jesus and Mary. Cast a pitying look on thy poor children of earth, prostrate at thy feet, who promise to follow thy example. Grant, O loving Saint, that after fulfilling our Christian duties on earth, we shall have the happiness of dying with the sweet names of Jesus, Mary, Joseph on our lips. Amen.

For the Sanctification of Our Labor

GLORIOUS Saint Joseph, model of all who are destined to labor, obtain for me the grace to work in the spirit of penance in expiation of my manifold sins ; to do my work conscientiously, putting my creed of duty above my inclinations ; to work in gratitude and joy, considering it an honor to develop by work the gifts we have received from God ; to work orderly, peacefully, and in moderation and patience, never faltering before tediousness and difficulties ; most of all, to work with purity of intention and detachment from self, always remembering death and the account I shall have to give of time lost, talents unused, good not done, and vain complacency in success so baneful to the work of God. All for Jesus, all for Mary, all in imitation of thee, O Patriarch Saint Joseph ! Such will be my motto in life and in death. Amen.

(500 days ind.)

To Lead a Pure Life

GUARDIAN of virgins and father, holy Joseph, to whose faithful care Christ Jesus, Innocence itself, and Mary, Virgin of virgins, were committed : I pray and beg of thee, by these dear pledges, Jesus and Mary, free me from all uncleanness, and make me with spotless mind, pure heart and chaste body, ever most chastely to serve Jesus and Mary, all the days of my life. Amen.

(3 years ind.)

For the Universal Church

O GLORIOUS Saint Joseph, chosen by God to be the Foster-Father of Jesus, the chaste Spouse of Mary ever Virgin, and the head of the Holy Family and then appointed by the Vicar of Christ to be the heavenly patron and defender of the Church founded by Jesus, most confidently do I implore at this moment thy powerful aid for all the Church Militant on earth. Do thou shield with thy truly paternal love especially the Supreme Pontiff and all the Bishops and priests who are in union with the Holy See of Peter. Be the defender of all who labor for souls amidst the trials and tribulations of this life, and cause all the peoples of the earth to submit themselves

in a docile spirit to that Church which is the ark of salvation for all men.

Be pleased also, dear Saint Joseph, to accept this dedication of myself which I now make unto thee. I dedicate myself wholly to thee, that thou mayest ever be my father, my patron and my guide in the way of salvation. Obtain for me great purity of heart and a fervent devotion to the interior life. Grant that, following thine example, I may direct all my actions to the greater glory of God, in union with the Sacred Heart of Jesus and the immaculate heart of Mary and in union with thee. Finally, pray for me that I may be a partaker in the peace and joy which were thine at the hour of thy holy death. Amen.

(100 days ind.)

The Litany of St. Joseph

LORD, have mercy on us.

Christ, have mercy on us.

Lord, have mercy on us.

Christ, hear us.

Christ, graciously hear us.

God, the Father of Heaven, have mercy on us.

God, the Son, Redeemer of the world, have mercy on us.

God, the Holy Ghost, have mercy on us.

Holy Trinity, one God, have mercy on us.

Holy Mary, pray for us.

Saint Joseph, " " "

Illustrious Son of David, " " "

Splendor of Patriarchs, " " "

Spouse of the Mother of God, " " "

Chaste Guardian of the Virgin, " " "

Foster-Father of the Son of God, " " "

Watchful Defender of Christ, " " "

Head of the Holy Family, " " "

St. Joseph most just, " " "

St. Joseph most pure, " " "

St. Joseph most prudent, " " "

St. Joseph most courageous, " " "

St. Joseph most obedient, " " "

St. Joseph most faithful, " " "

Mirror of patience, " " "

Lover of poverty, " " "

<i>Model of all who labor,</i>	pray for us.
<i>Glory of family life,</i>	” ” ”
<i>Preserver of virgins,</i>	” ” ”
<i>Mainstay of families,</i>	” ” ”
<i>Solace of the afflicted,</i>	” ” ”
<i>Hope of the sick,</i>	” ” ”
<i>Patron of the dying,</i>	” ” ”
<i>Terror of demons,</i>	” ” ”
<i>Protector of the Holy Church,</i>	” ” ”
<i>Lamb of God, Who takest away the sins of the world,</i> spare us, O Lord.	
<i>Lamb of God, Who takest away the sins of the world,</i> graciously hear us, O Lord.	
<i>Lamb of God, Who takest away the sins of the world,</i> have mercy on us.	
<i>He hath made him master of His house.</i>	
And ruler of all His possessions.	

PRAYER

O God, Who in Thine ineffable providence didst vouchsafe to choose Blessed Joseph to be the spouse of Thy most Holy Mother ; grant, we beseech Thee, that we may be made worthy to have him for our intercessor in Heaven whom on earth we venerate as our protector. Who livest and reignest world without end. Amen. (5 years ind.)

For a Special Favor

O BLESSED Saint Joseph, tender-hearted father, faithful guardian of Jesus, chaste spouse of the Mother of God, I pray and beseech thee to offer to God the Father, His divine Son, bathed in blood on the cross for sinners, and through the thrice holy Name of Jesus, obtain for us of the eternal Father the favor we implore . . .

Appease the divine anger so justly inflamed by our sins ; beg of Jesus mercy for thy children. Amid the splendors of eternity, forget not the sorrows of those who suffer, those who pray, those who weep. Stay the almighty arm which smites us, that by thy prayers and those of thy most holy Spouse the Heart of Jesus may be moved to pity and to pardon. Amen.

Saint Joseph of Mount Royal, pray for us.



14

Brother André's Room

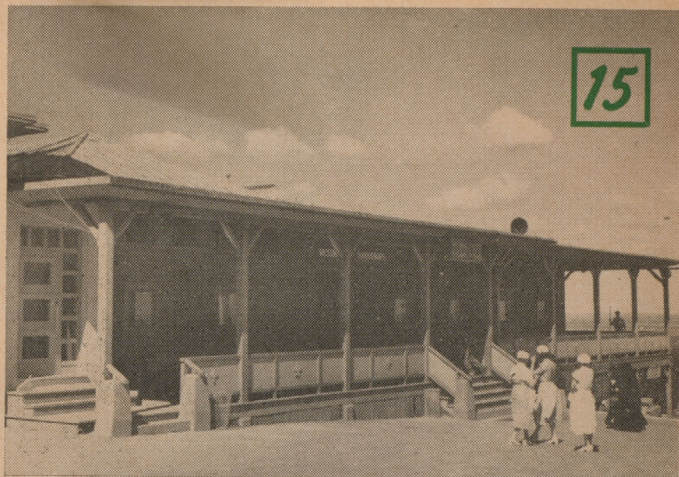
● On the second floor of the original chapel, underneath the steeple, is located the little room which Brother André occupied at the outset of the Shrine.

●● These quarters are just as Brother André left them.

Notice the simple furnishings, the oil stove on which he used to cook his own scanty meals, the straight chairs on which he would sometimes manage to snatch a few minutes' rest. On the table are the few books he ever read, for Brother André had very little schooling.

●●● One of the cots was used by Brother André, the other was used occasionally by some pilgrim who would need a rest after a long trip to the Oratory.

●●●● Brother André's humble way of life can best be grasped in the atmosphere of this modest abode.



The Pilgrims' Pavilion

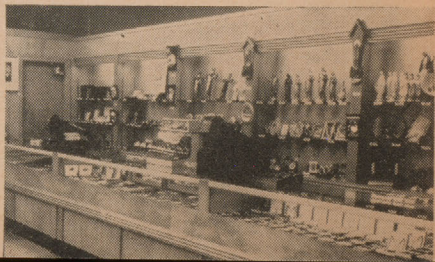
For the convenience of visitors and pilgrims, the Oratory maintains a building wherein are located the souvenir shop, a book store, a snack bar and a modern cafeteria.

These various services are not concessions, but are entirely operated by the Shrine, so that all profits derived therefrom are entirely applied to the building fund.

A) SOUVENIR SHOP

The souvenir shop offers a wide variety of religious articles. Lovely post cards of the Shrine may also be had here. One may also find a writing table to the left of the entrance. Post stamps are sold in vending machines and at the Post Office located underneath the porch of this building.

Open from 8.00 a.m.
to 10.30 p.m.



B) BOOK STORE

Our book store carries a fine selection of books on religious topics. We especially recommend you browse around the counter on which are displayed the Shrine's numerous publications.

There are any number of books, booklets and pamphlets on Brother André and the Oratory.

Open from 9.00 a.m. to 9.30 p.m.



C) SNACK BAR

For refreshments or a quick lunch, the snack bar is the place. Vending machines are also at your disposal to dispense certain items like cigarettes, gum, small change, kerchiefs, etc...

Open from
8.30 a.m.
to
10.00 p.m.



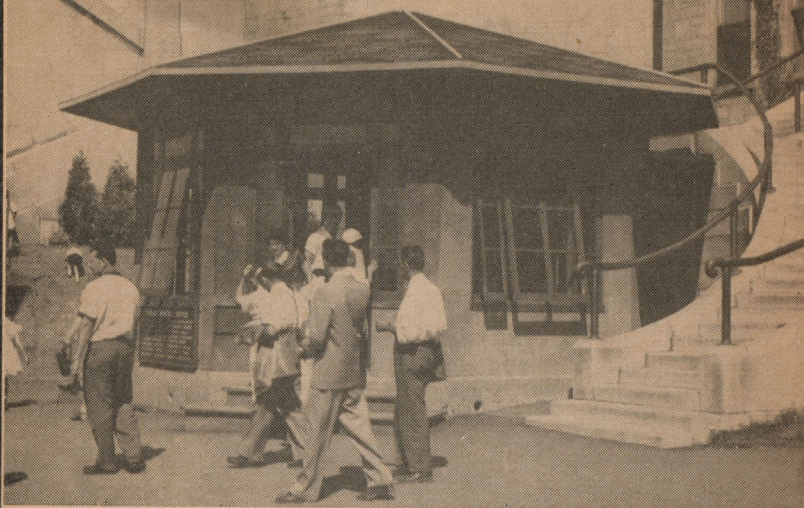
D) CAFETERIA

Full-course meals may be had at the cafeteria downstairs. The year-round services of a French chef is your guarantee of excellent food prepared according to the best recipes of the French cuisine. The various courses are appetizingly displayed on self-service steam tables.

There are tables on the porch for those wishing to eat outside while enjoying a breath-taking view over the city.

Open from 7.00 a.m.
to 7.00 p.m.



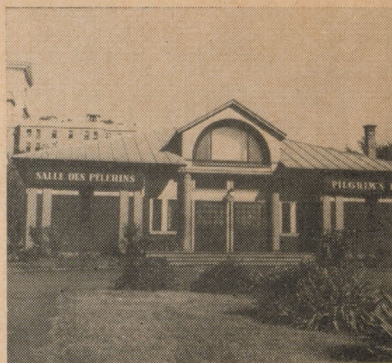


The General Office

- LOCATION : In front of the monastery, just off the parking lot.
- SERVICES OFFERED :
 A priest is in attendance there to
 bless religious articles,
 acknowledge donations and offerings,
 take in subscriptions to the Shrine's monthly,
 accept Mass stipends, etc...
- OPEN daily from 8.30 a.m. to 9.30 p.m. in
 the summertime ;
 from 8.30 a.m. to 5.30 p.m. in
 the off-season.

Miscellanea

THE PILGRIMS' HALL on the lower terrace serves as a playhouse for *Les Jongleurs de la Montagne*, a drama group attached to the Oratory. *Les Jongleurs* on occasions put on religious plays somewhat in the manner and spirit of the theatre guilds of the mediaeval ages.



A HOSTELRY located on the Shrine grounds offers pilgrims overnight accommodations at reasonable rates. Inquiries for room rental may be made at the Information Booth. Out-of-town pilgrimage groups may book reservations either directly or by mail.

THE INFORMATION BOOTH is at the service of visitors and pilgrims from 8.00 a.m. till 9.00 p.m. throughout the summer season. A competent guide is on duty to supply information on the Shrine, travel routes, lodging accommodations, etc.



'Twas a pleasure

to have you visit the Oratory! The presence of visitors and pilgrims always proves gratifying to the Shrine's personnel. We dare hope you've enjoyed your tour as much as we've enjoyed having you around. If so, why wouldn't you tell your relatives and friends back home about your thrilling experience; we feel certain they also might draw great spiritual benefits from a similar visit.

And by the way, wouldn't you like to prolong your visit at the Shrine? One excellent way of so doing is to keep informed on events and progress at the Oratory. Hence our suggestion that you subscribe to *THE ORATORY* magazine, a monthly publication that keeps our friends posted on doings at the Shrine. This fully illustrated, gravured magazine is rated tops among publications of the kind.

Subscribers are further listed among the benefactors of the Oratory, and as such are entitled to share in the prayers and Masses offered here daily. Sample copies and subscription blanks are available at the General Office.

And once again, thanks a million for visiting with us. We are looking forward to the pleasure of welcoming you again in the near future.

We wish you a pleasant journey homeward!

AFZ 9781

"the Oratory"

The official review of the world's greatest Shrine
dedicated to Saint Joseph.
It reflects the spirit of the late
Brother André. C.S.C.,
the "Miracle Man of Mount Royal".

FEATURES

- ★ Circulation : 200,000 copies monthly.
- ★★ Hailed by the Canadian and American hierarchy as the outstanding periodical of its kind.
- ★★★ Keeps its readers informed of the events at St. Joseph's Shrine of Mount Royal, where an estimated 3,000,000 pilgrims and visitors flock each year.
- ★★★★ The modern pictorial technique of secular publications, we use in matters of the soul.

RATE OF SUBSCRIPTION : *Only \$2.00 a year,*
the Shrine's full color calendar included as a premium.

Send your subscription in care of :

The Editor
St. Joseph's Oratory
Montreal — Canada

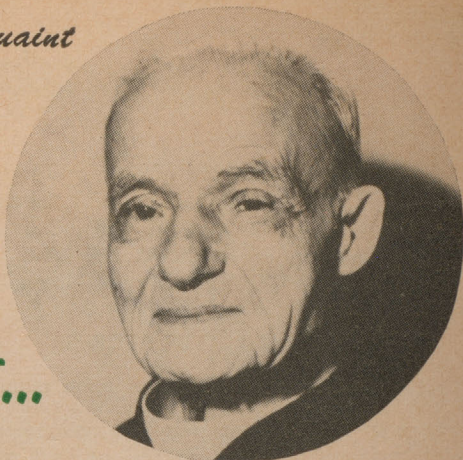
I enclose two dollars for a subscription to "*The Oratory*"
and calendar.

Name :
(Please print)

Address :
.....

*To better acquaint
you with the
late Founder
of the Shrine.*

**WE
PRESENT...**



- THE WONDER MAN, by H. P. Bergeron, c.s.c.
A pocket-book edition of Brother André's life story. Price : 35¢
- BROTHER ANDRÉ AND HIS WORK, by Arnold Toner, c.s.c.
A 90-page booklet lavishly illustrated. Price : 35¢
- BROTHER ANDRÉ, by A. Legault, c.s.c.
A 32-page pamphlet. Price : 10¢
- THE WONDER MAN WHO FOUNDED SAINT JOSEPH'S ORATORY. Story by Henry Bernard, c.s.c., and illustrations by Jacques Gagnier.
A 64-page "comic book" in full color. Price : 25¢
- WHAT'S WHAT ABOUT BROTHER ANDRÉ, by Henry Bernard, c.s.c.
A pamphlet answering various queries about the Shrine's Founder. Price : 10¢

*All correspondence with the Shrine
should be addressed as follows :*

SAINT JOSEPH'S ORATORY
MONTREAL 26, P.Q.
CANADA