

# ATLAS ANTIQUUS.

TWELVE MAPS  
OF THE  
**ANCIENT WORLD**

FOR  
SCHOOLS AND COLLEGES

BY  
**DR. HEINRICH KIEPERT.**  
M. R. ACAD. BERLIN.

SIXTH EDITION  
IMPROVED CORRECTED AND ENLARGED.

## CONTENTS:

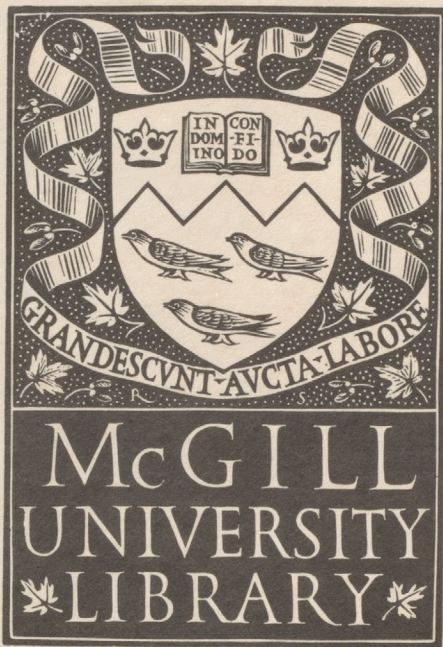
- |  |  |
|--|--|
| 1. Orbis terrarum antiquis notus.            | 7. Italia.                                     |
| 2. Imperia Persarum et Macedonum.            | 8. Italiae pars media et inferior cum Sicilia. |
| 3. Aegyptus. — Phoenice et Palaestina.       | 9. Roma urbs.                                  |
| 4. Asia citerior.                            | 10. Hispania, Mauretania et Africa.            |
| 5. Graecia cum insulis et oris maris Aegaei. | 11. Gallia, Britannia, Germania.               |
| 6. Graecia ampliore modulo descripta.        | 12. Imperium Romanum.                          |



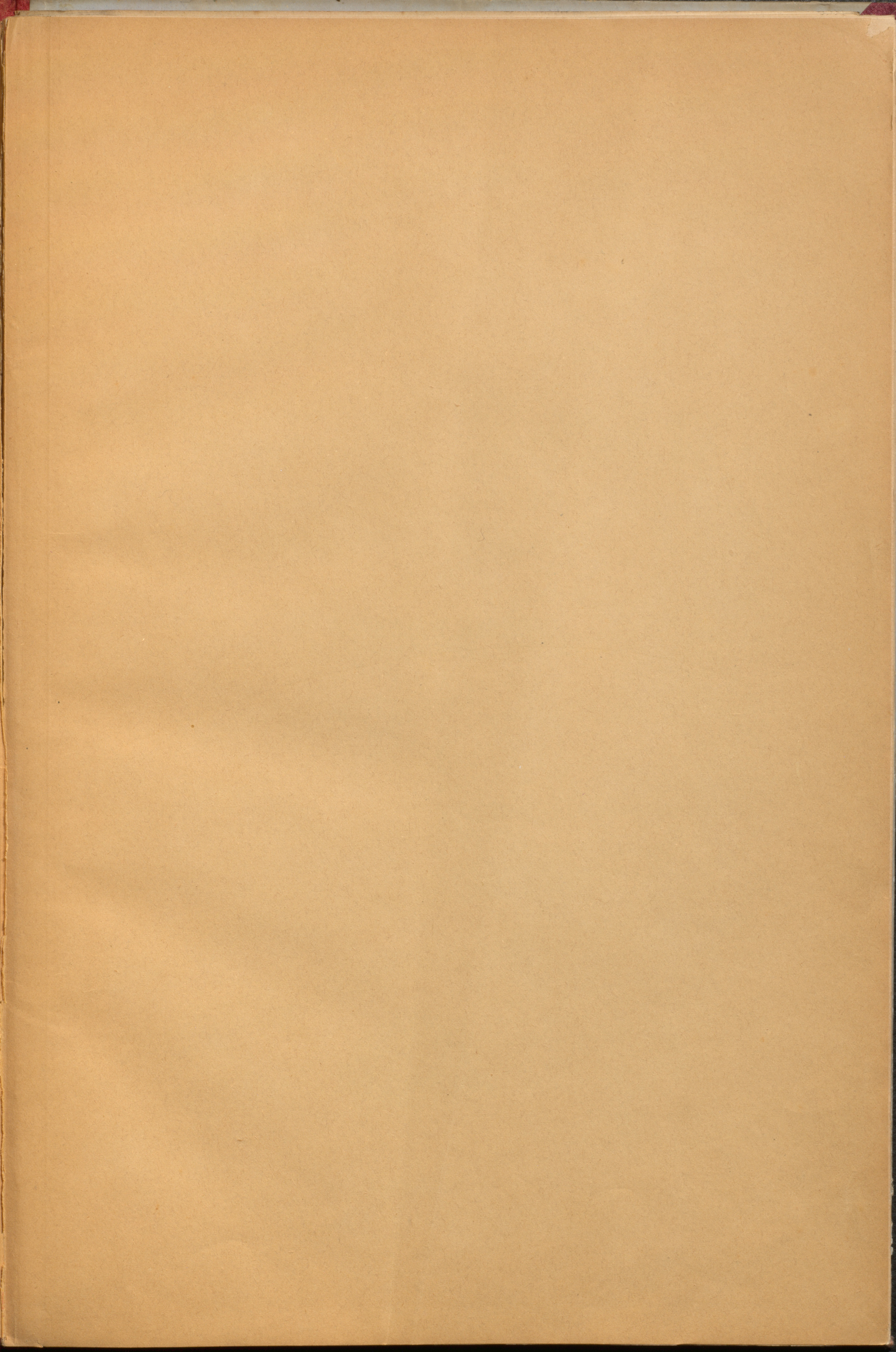
WILLIAMS AND NORGATE.  
14. HENRIETTA STREET, COVENT GARDEN, LONDON;  
AND  
20. SOUTH FREDERICK STREET, EDINBURGH.

BERLIN, DIETRICH REIMER.  
1876.

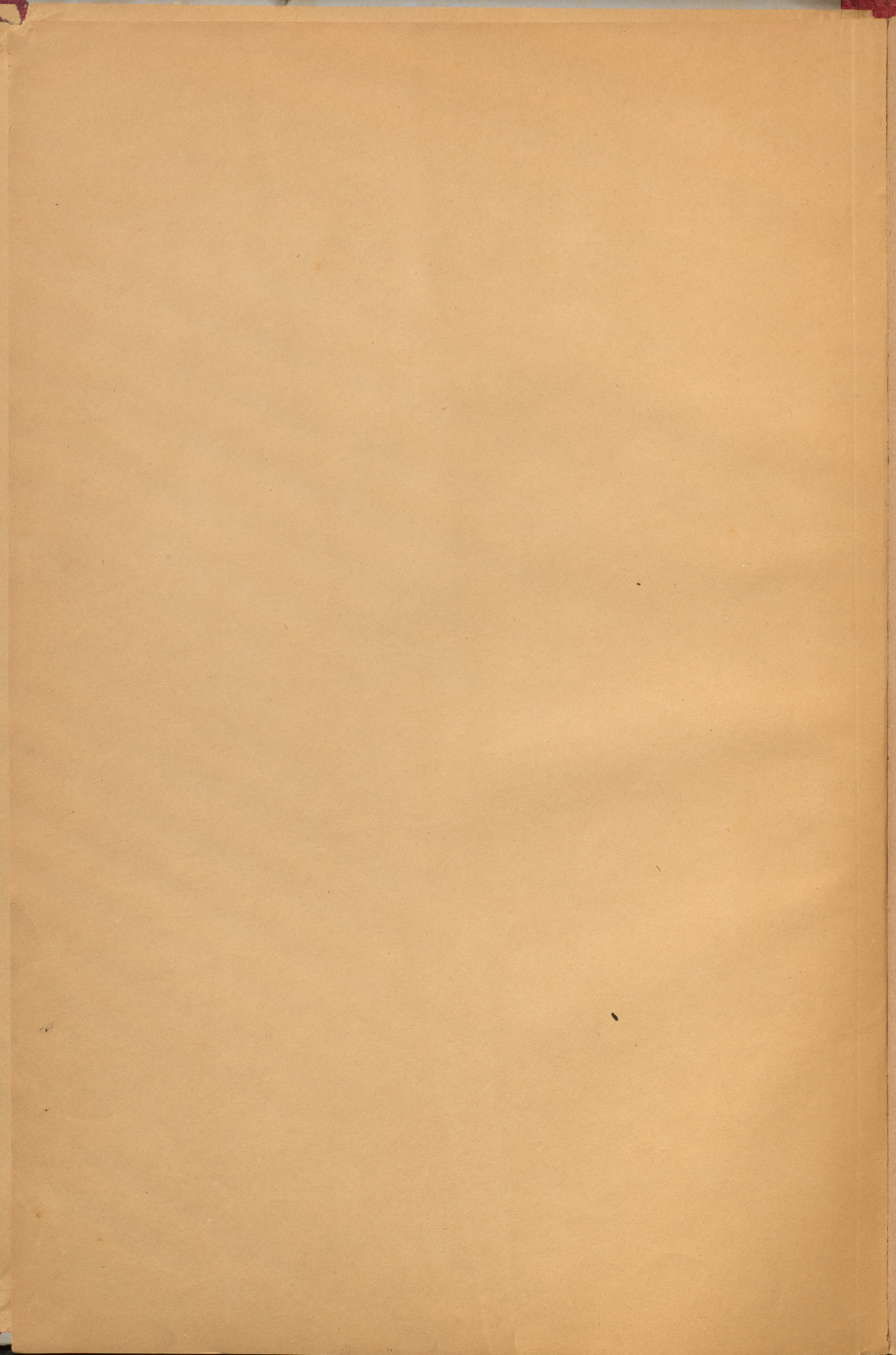














# ATLAS ANTIQUUS.

---

TWELVE MAPS

OF THE

# ANCIENT WORLD

FOR

SCHOOLS AND COLLEGES

BY

**DR. HEINRICH KIEPERT.**

M. R. ACAD. BERLIN.

---

## CONTENTS:

- |  |  |
|--|--|
| 1. Orbis terrarum antiquis notus.            | 7. Italia.                                     |
| 2. Imperia Persarum et Macedonum.            | 8. Italiae pars media et inferior cum Sicilia. |
| 3. Aegyptus. — Phoenice et Palaestina.       | 9. Roma urbs.                                  |
| 4. Asia citerior.                            | 10. Hispania, Mauretania et Africa.            |
| 5. Graecia cum insulis et oris maris Aegaei. | 11. Gallia, Britannia, Germania.               |
| 6. Graecia ampliore modulo descripta.        | 12. Imperium Romanum.                          |
- 



BERLIN,

DIETRICH REIMER.



STUDY IN A ...

... ..

... ..

... ..

... ..

... ..

... ..

... ..

... ..

... ..

... ..

... ..

... ..

... ..

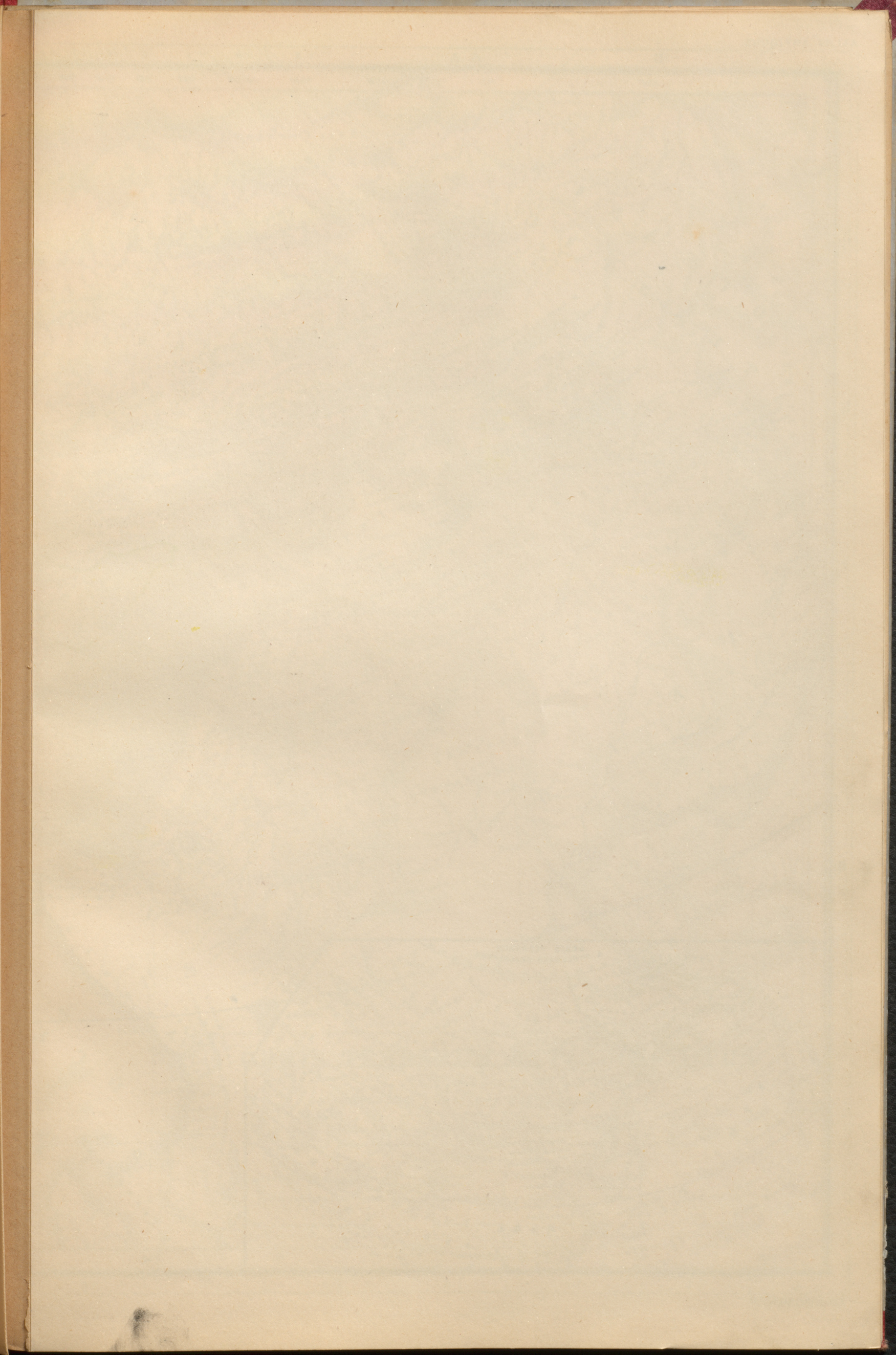
... ..

... ..

... ..

... ..













# ORBIS TERRARUM ANTIQUIS NOTUS

altero p. Chr. n. seculo

AUCTORE HENRICO KIEPERT BEROLINENSI.

- Gentes Aricae quae vulgo Indogermanicae vocantur
- Gentes Semiticae
- Reliqua hominum coloris albi genera quae neque Aetii nec Semitis adnumeranda videntur

Regnorum limites qui erant altero p. C. seculo

- Imperii Romani
- Regni Parthici Arsacidarum
- R. Scytharum in Bactriane et India
- Regni Sinici

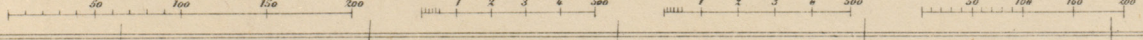
Quae locorum vel gentium vocabula apud auctores graecos et latinos non inveniuntur, ea reclinibus literis scripta sunt.

Miliaria Germanica (stadiorum 40)

M. Passuum Roman.

Miliaria Anglica

Leugae Francicae













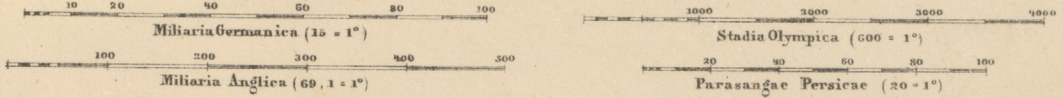




# IMPERIA PERSARUM ET MACEDONUM

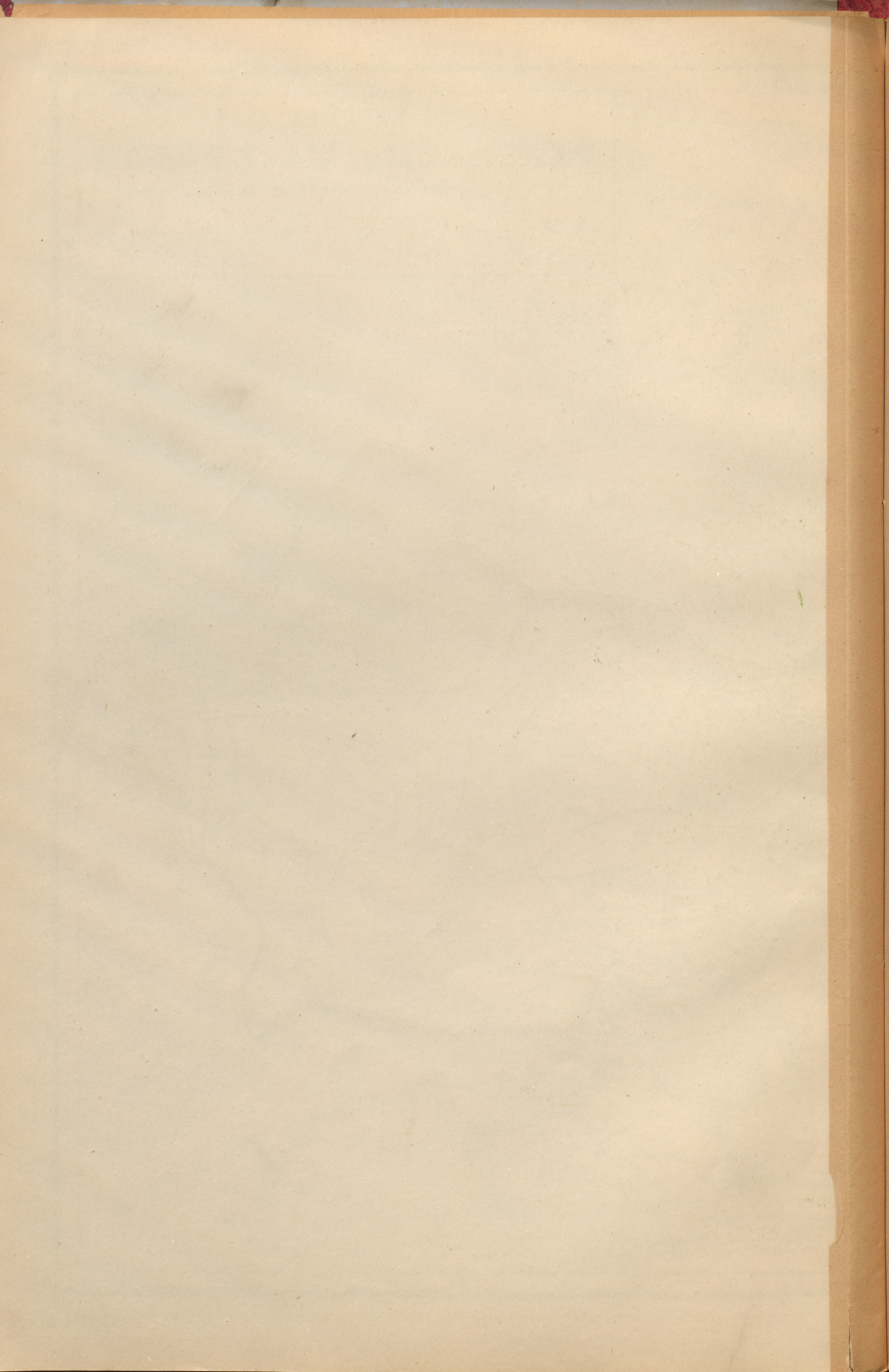
Auctore HENRICO KIEPERT Berolinensi.

Modulus 1:12,000,000



inferiores } Imperii Persici  
superiores }  
Imperii Alexandri M. Coloniae Graecae  
et ceterorum praefecturae Macedonum  
a Susa usque (Herod. V. 49.)  
Alexandri vel post Alexandrum addita, exilibus liberis  
et ceteris asiaticis tantum obvia relictibus litteris  
scripta sunt.







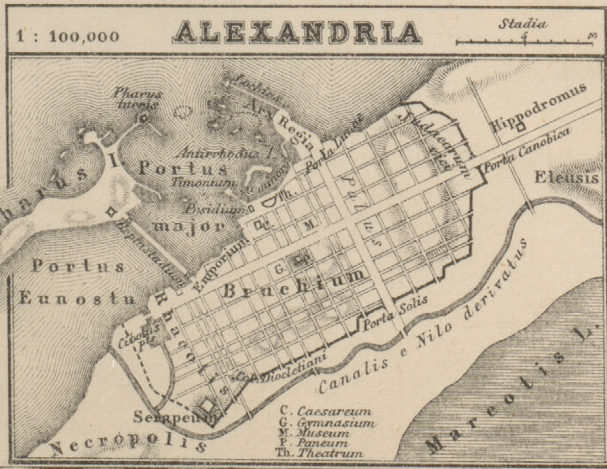
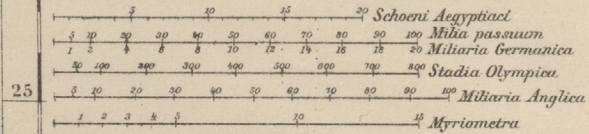






# AEGYPTVS

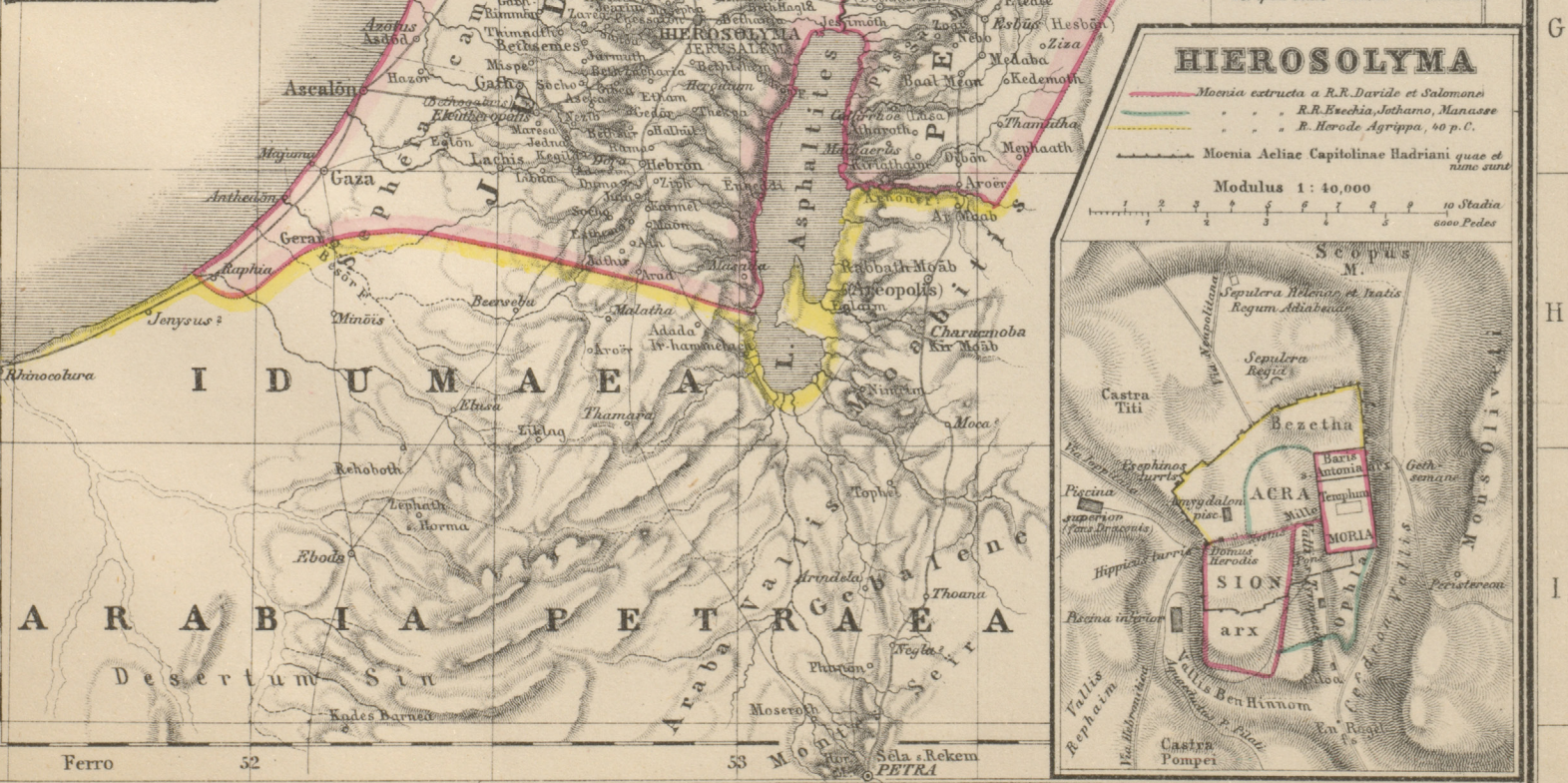
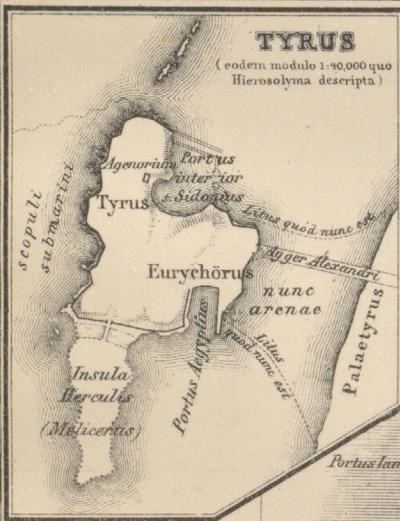
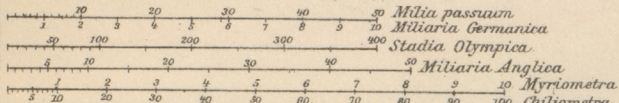
Modulus = 1 : 3,000,000.



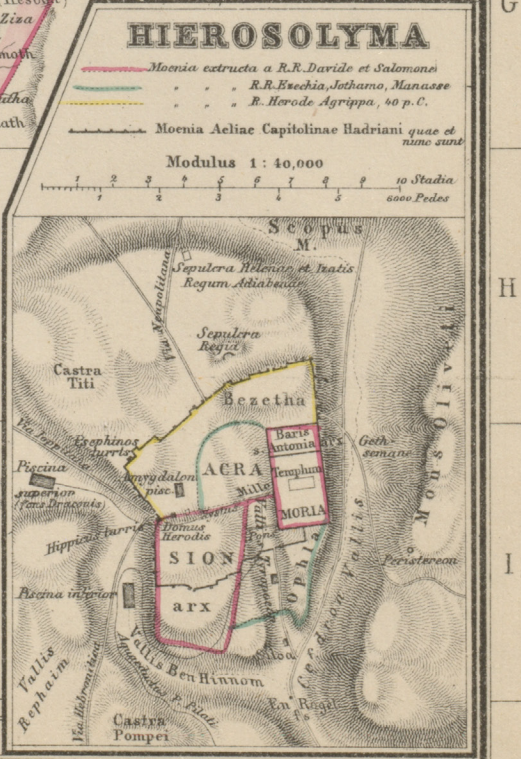


# PHOENICE ET PALAESTINA

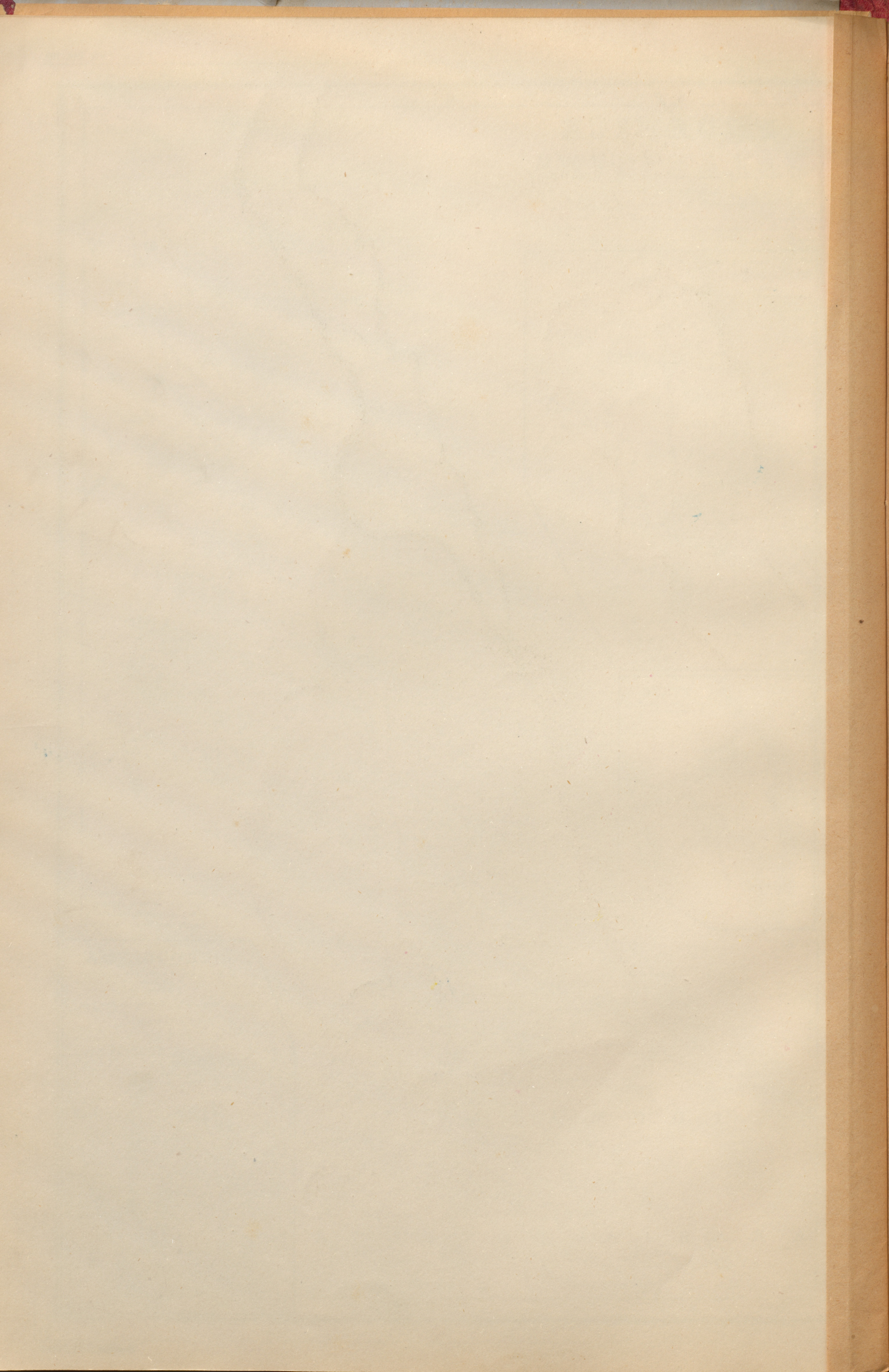
Modulus 1: 1,500,000



*Nomina e soto V.T. cognita quae apud auctores Graecos et Romanos non inveniuntur scripta sunt litoris reclimibus.*



















# ASIA CITERIOR

Auctore HENRICO KIEPERT Berolinensi.

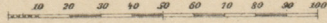
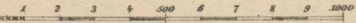
Tabulae modulus 1 : 4,000,000.

Miliaria Germanica, 15 = 1°.

Milia passuum Romana, 75 = 1°.

Stadia Olympica, 600 = 1°.

Miliaria Anglica, 69 1/2 = 1°.



Nomina oppidorum a Romanis addita exhibitis literis, locorum nomina e monumentis asiaticis desumpta, quorum nulla apud graecos et latinos auctores fit mentio, reclinibus literis scripta sunt.

..... Cyri minoris et Xm. Graecorum itinera secundum Xenophontem.













**GRAECIA**  
 CUM INSULIS  
 ET ORIS MARIS AEGAEI

Auctore HENRICO KIEPERT Berolinensi.

Modulus - 1 : 2,500000

Stadia Olympica 600 - 1°  
 100 200 300 400 500

Milia passuum Romanorum 15 - 1°  
 10 20 30 40 50

Miliaria Germanica (geographica) 15 - 1°  
 1 2 3 4 5 6 7 8 9 10

Leugae nauticae 20 - 1°  
 1 2 3 4 5 6 7 8 9 10

Myriametra 114 - 1°  
 1 2 3 4 5 6 7 8 9 10  
 5 10 Chilometra

Miliaria Anglica 66 - 1°  
 10 20 30 40 50





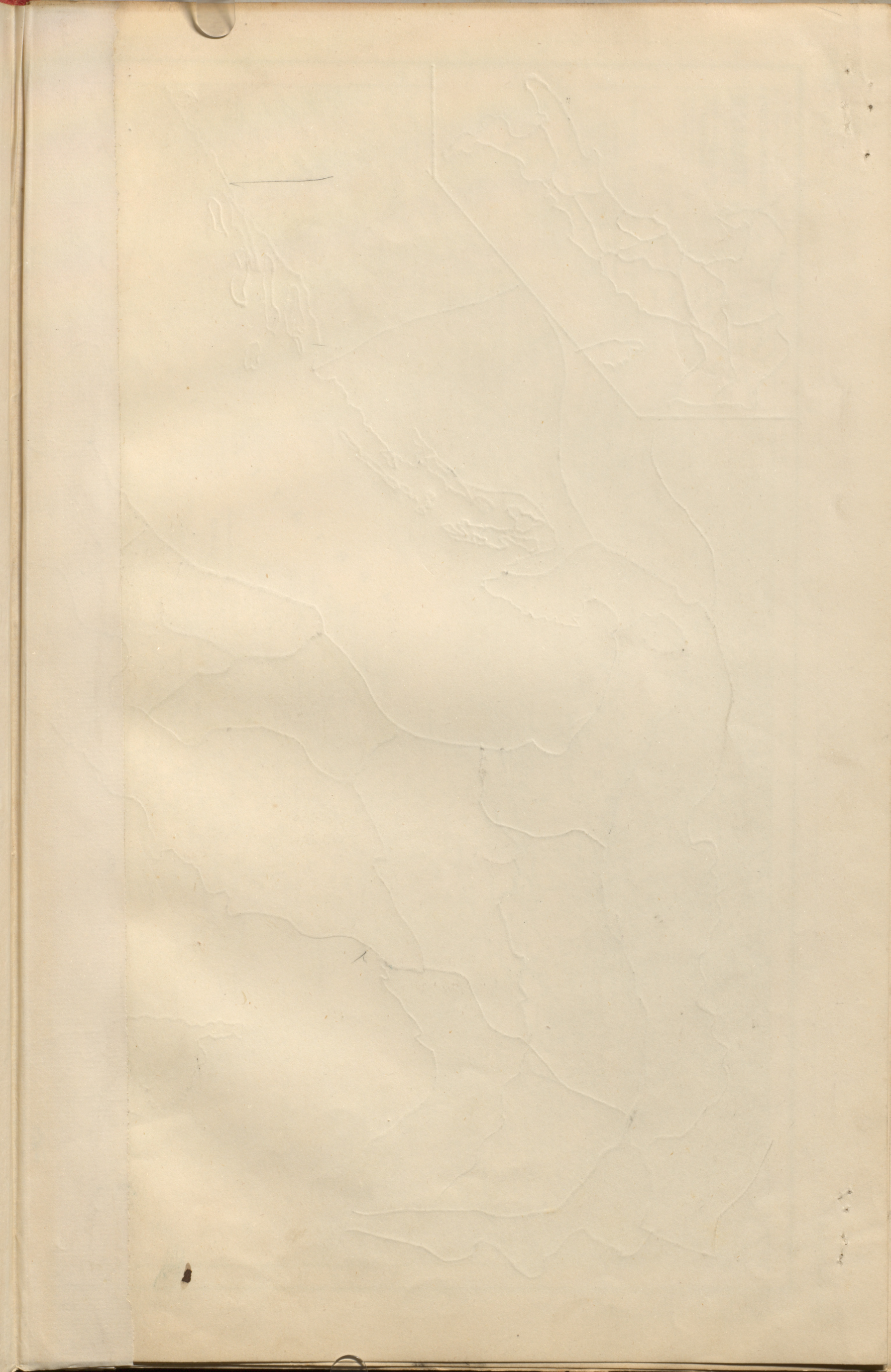
Civitates Graecae  
 D Doricae     I Ionicae     A Aeolicae cum Achaeis  
 Regni Macedoniae fines ante bellum Persicum  
 Philippum II regem

Oppidorum post Alexandrum M. et a regibus et a Romanis conditorum nomina et quae ab usdem nova nomina oppidis antiquis imposita sunt ea hac in tabula a ceteris distinguuntur oculibus literis.











UNDECIM REGIONES  
**ITALIAE**  
ab Augusto Imp.  
institutaee.



13 Paris

11

10

9

8

7

6

5

46

A

B

C

D

E

F

n

m

l

k

i

h

g

f

e

d

c

b

a

44

43

42

MARE

LIGUSTICUS

SINUS

MARE ADRIATICUM

SUPERUM

12

11

10

9

8

7

6

5

46

A

B

C

D

E

F

n

m

l

k

i

h

g

f

e

d

c

b

a

44

43

42

MARE

LIGUSTICUS

SINUS

MARE ADRIATICUM

SUPERUM

12

11

10

9

8

7

6

5

46

A

B

C

D

E

F

n

m

l

k

i

h

g

f

e

d

c

b

a

44

43

42

MARE

LIGUSTICUS

SINUS

MARE ADRIATICUM

SUPERUM

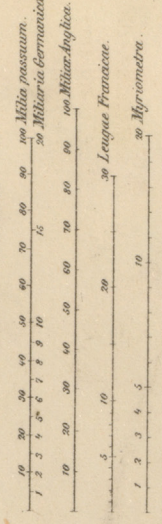




# ITALIA

Auctore HENRICO KIEPERT Berolinensi.

Modulus 3,000,000.



Coloniae Graecae Coloniae Romanae ante bellum sociale conditae.

Greenwich



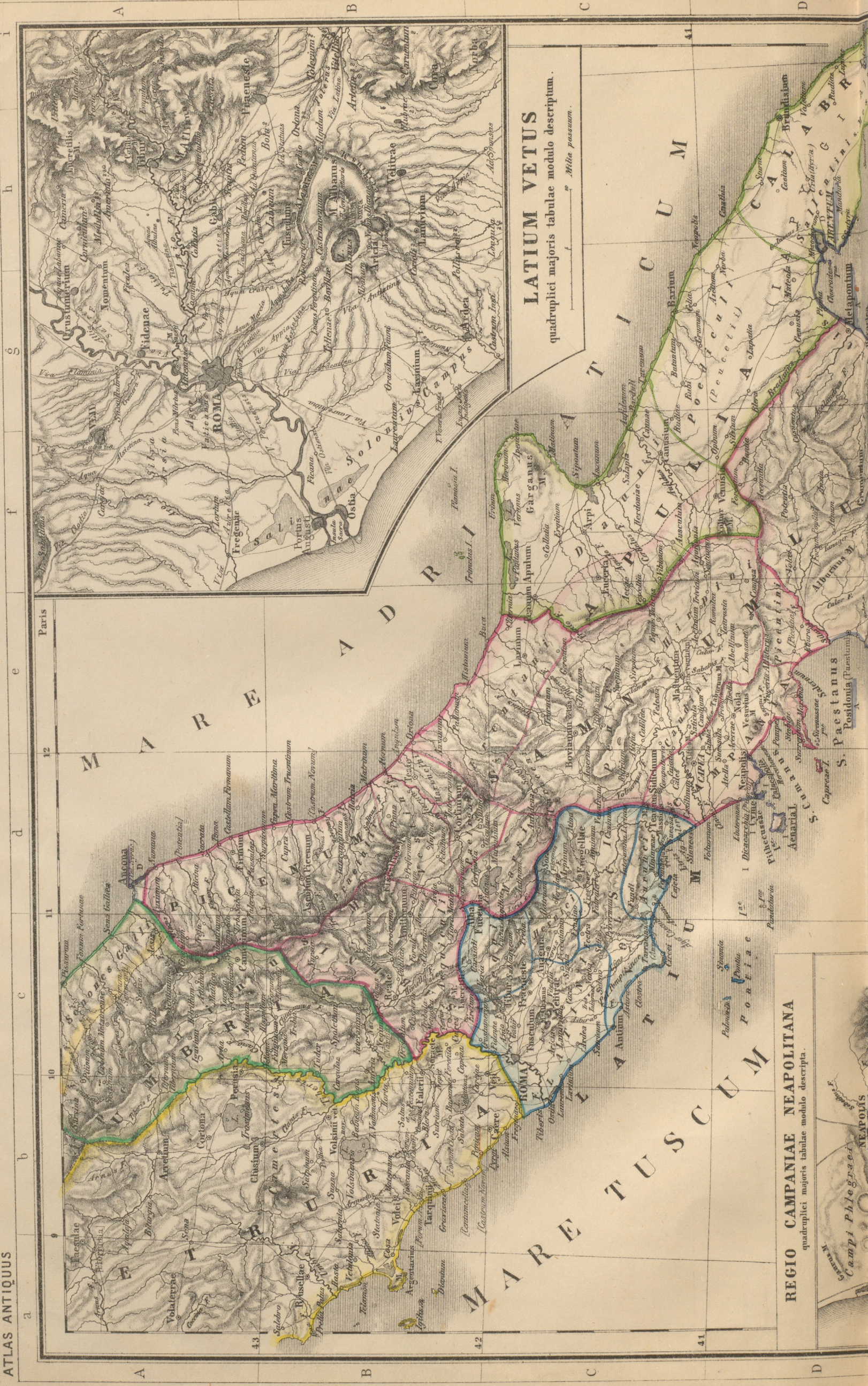
ALPATI

100









LATIUM VETVS

quadruplici majoris tabulae modulo descriptum.

REGIO CAMPANIAE NEAPOLITANA

quadruplici majoris tabulae modulo descripta.

Campi Phlegraei NEAPOLIS





# ITALIAE

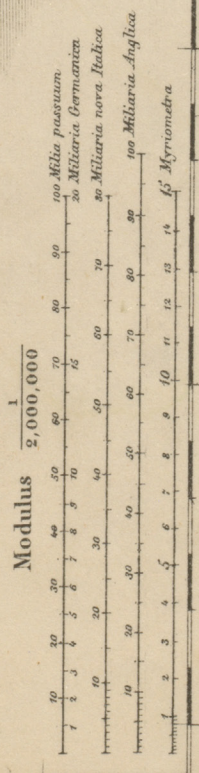
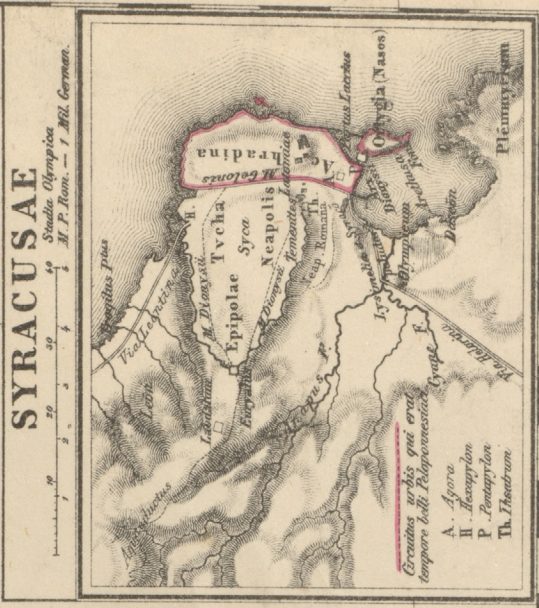
## PARS MEDIA ET INFERIOR CUM SICILIA

ad illustrandam potissimum antiquiorem Romanorum  
et coloniarum Graecarum historiam.

Auctore HENRICO KIEPERT Berolinensi.



- Gentes Sabellicae  
*plerumque Osa lingua utentes*
- Coloniae Graecae
- D. Dorianarum
- I. Ioniensium
- A. Achaeorum
- Coloniae Phoenicium













# ROMA VRBS

ab Augusti Imp tempore  
cum muris ab Aureliano et Honorio conditis.

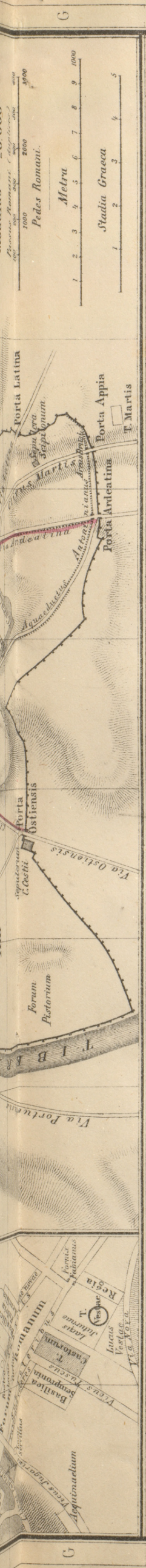
- Regiones Augusti**
- I. Porta Capena
  - II. Caelimontium
  - III. Isis et Serapis
  - IV. Templum Pacis
  - V. Esquiliae
  - VI. Alta Semita
  - VII. Via Lata
  - VIII. Forum Romanum
  - IX. Circus Flaminius
  - X. Palatium
  - XI. Circus Maximus
  - XII. Piscina Publica
  - XIII. Aventinus
  - XIV. Trans Tiberim



**FORUM ROMANVM**  
quo statu tempore liberae republicae fuisse videtur.

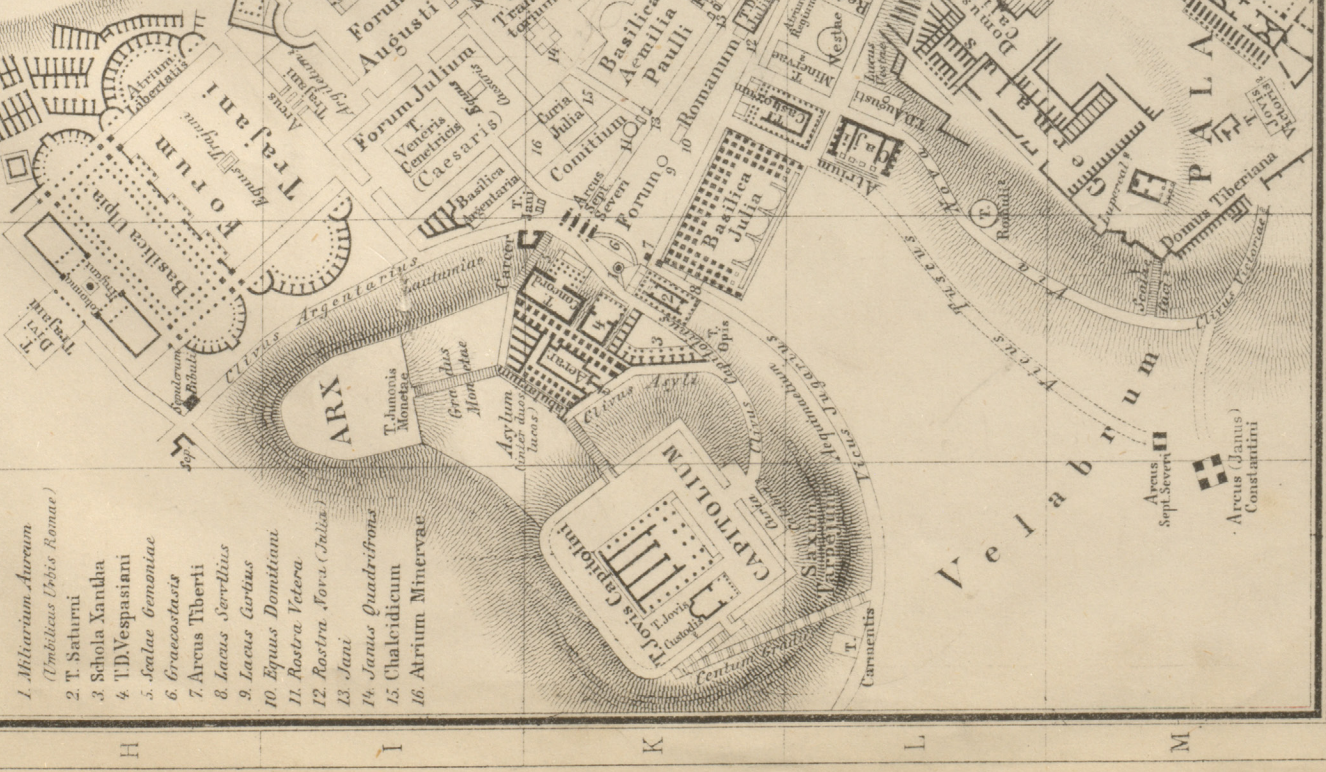
Modulus = 20,000  
Pascus Romani (asipice)





**FORUM ROMANUM  
ET FORA CAESARUM  
CUM  
CAPITOLIO  
ET REGIONE CIRCUMJACENTE**

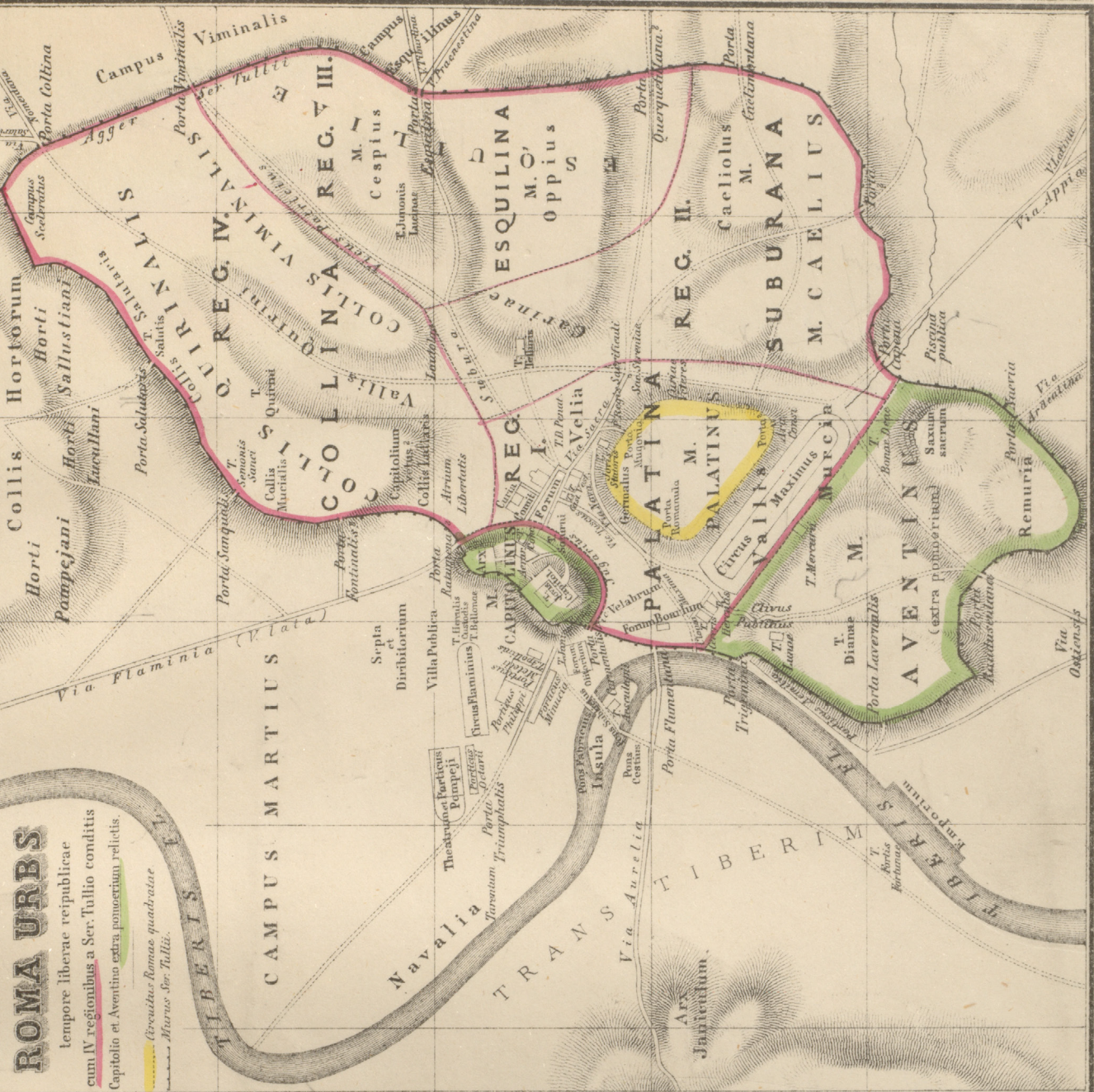
quadruplici majoris tabulae modulo descripta  
Pases Romanorum  
Metra  
Pedes Romani



1. Milivarium Arcuum (Umbilicus Urbis Romae)
2. T. Saturni
3. Schola Xanthia
4. T.D. Vespasiani
5. Scalae Trajanicae
6. Graecostasis
7. Arcus Tiberii
8. Lacus Serranus
9. Lacus Curtius
10. Equus Domitiani
11. Rostra Vetera
12. Rostra Nova (Julia)
13. Jani
14. Janus Quadrifrons
15. Chalcoedicum
16. Atrium Minervae

**ROMA URBS**  
tempore liberae reipublicae  
cum IV regionibus a Ser. Tulio conditis  
Capitolio et Aventino extra pomerium relictis.

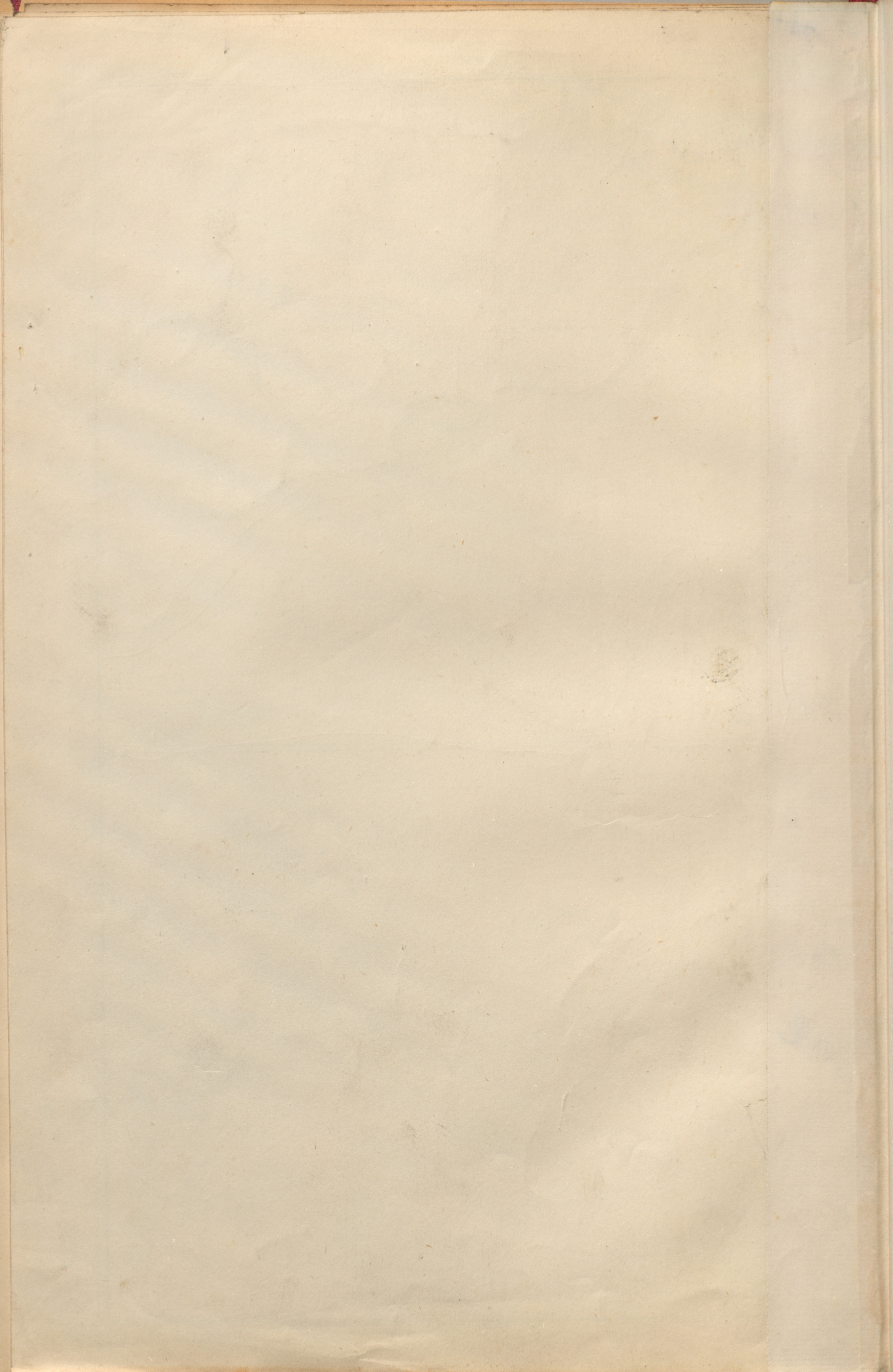
(Aventina Romae quadratae  
Murus Ser. Tullii)



ROMA URBS  
tempore liberae reipublicae  
cum IV regionibus a Ser. Tulio conditis  
Capitolio et Aventino extra pomerium relictis.

(Aventina Romae quadratae  
Murus Ser. Tullii)









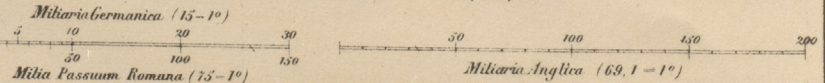


# HISPANIA MAURETANIA ET AFRICA

auctore HENRICO KIEPERT, Berolinensi



Tabulae modulus — 5,000,000.







**Provinciae  
CARTHAGINIENSIBUS  
subditae.**

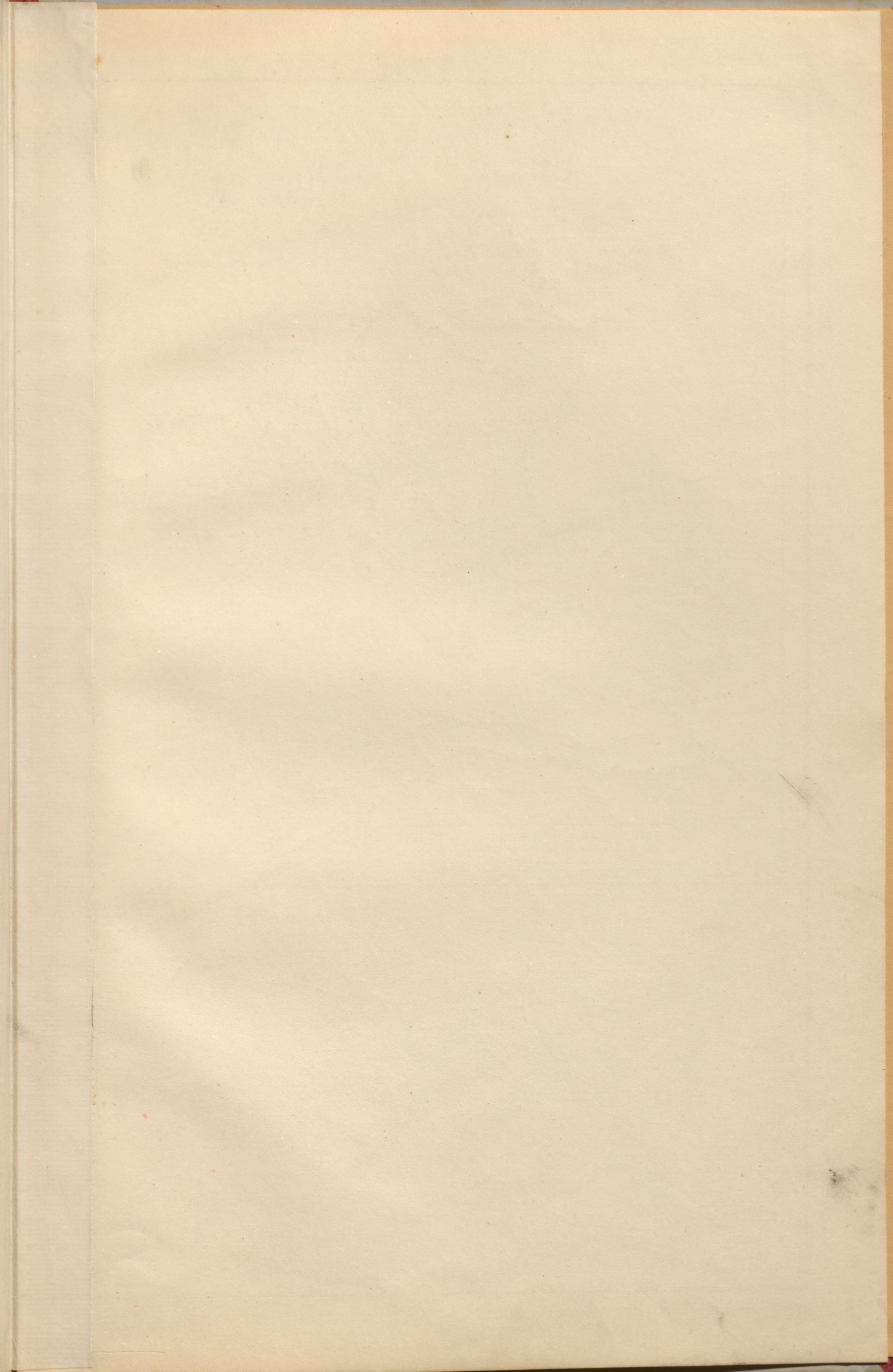
- amissae bello Punico primo
- posthac imperio additae
- Gr. Civitates Graecae

- Provinciae Hispanienses
- Gentes Ibericae extra Hispaniam
- Gentes Celticae extra Galliam
- Iter Hannibalis ex Hispania in Italiam

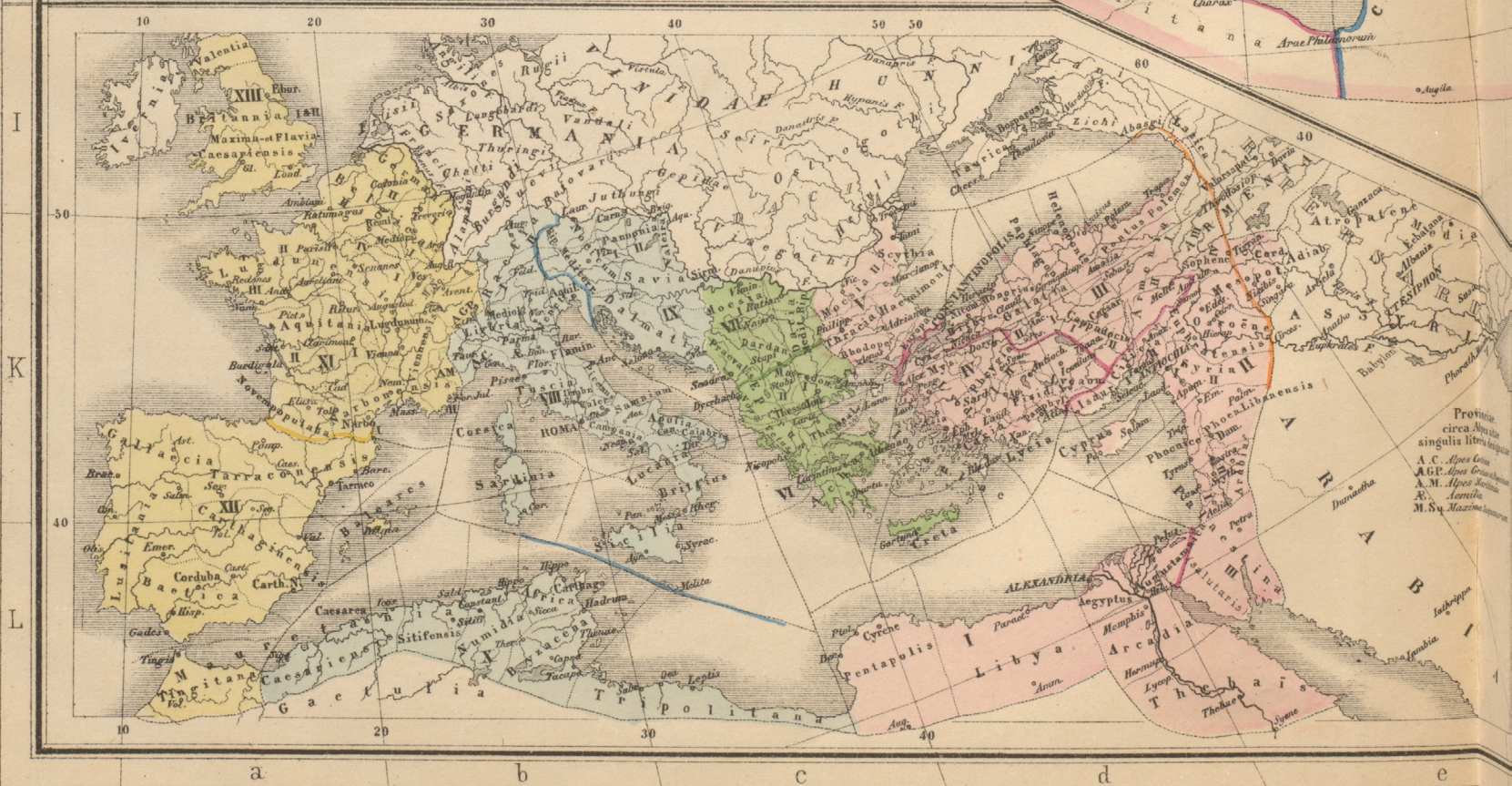










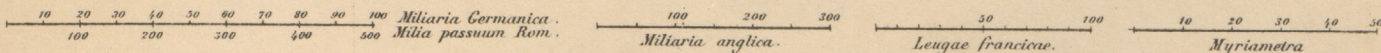




# IMPERIUM ROMANUM

Auctore HENRICO KIEPERT Berolinensi.

Tabulae modulus 1-15000000.



### U. c. a.Cn. In Europae parte occidentali

- 513 (241) Sicilia pars occidentalis
- 544 (210) orientalis
- 516 (238) Sardinia Corsica
- 530 (224) Gallia cisalpina (206) Venetia
- 549 (205) Hispaniae pars orientalis et meridionalis
- 616 (138) Lusitania
- 631 (123) Insulae Baleares
- 636 (118) Galliae Narbonensis pars orientalis
- 648 (106) occidentalis
- 700 (54) Aquitania Celtica Belgica Germania sup.
- 715 (39) Germania inferior.
- 730 (24) Hispaniae ora septentrionalis
- 730 (15) Raetia Fendelicia Noricum
- 797 (44 p. Cn.) Britannia inferior.
- 838 (85 p. Cn.) superior
- c. 90 Agri Decumates

### In Europae parte orientali

- 525 (229) Corcyra et ora occid. Macedoniae
- 565 (189) Aetolia Icaronia Ambracia
- 577 (177) Isthria 589 (165) Epirus
- 587 (167) Balmatiae ora
- 608 (148) Macedonia, Achaia
- 624 (130) Chersonesus Thracica
- 679 (75) Dardania
- 687 (67) Creta
- 720 (34) Liburnia, Dalmatia interior
- 725 (29) Moesia superior
- 761 (8 p. Cn.) Pannonia
- 765 (6 p. Cn.) Moesia inferior
- 799 (46) Thracia
- 859 (106) Dacia

### Singulae provinciae

quibus annis sub ditionem populi Romani venerint.

#### U. c. a.Cn.

#### In Asia

- 625 (129) Mysia Lydia Caria (prov. Asia)
- 634 (c. 120) Pamphlytia, c. 90. Phrygia
- 670 (74) Bithynia
- 691 (63) Syria Cilicia Paphlagonia Ponti pars occid.
- 697 (57) Cyprus
- 705 (49) Phrygia
- 729 (25) Galatia, Lycaonia
- 746 (7) Paphlagonia interior Pontus Galaticus.
- 770 (77 p. Cn.) Cappadocia
- 797 (44) Lycia Rhodus, Iudaea
- 817 (64) Pontus-Polemoniacus, Armenia minor
- 826 (73) Commagene. 833 (80) Coelestria
- 859 (106) Arabia, Palmyra
- 918 (165) Mesopotamia
- 1050 (297) Sophena, Corduene

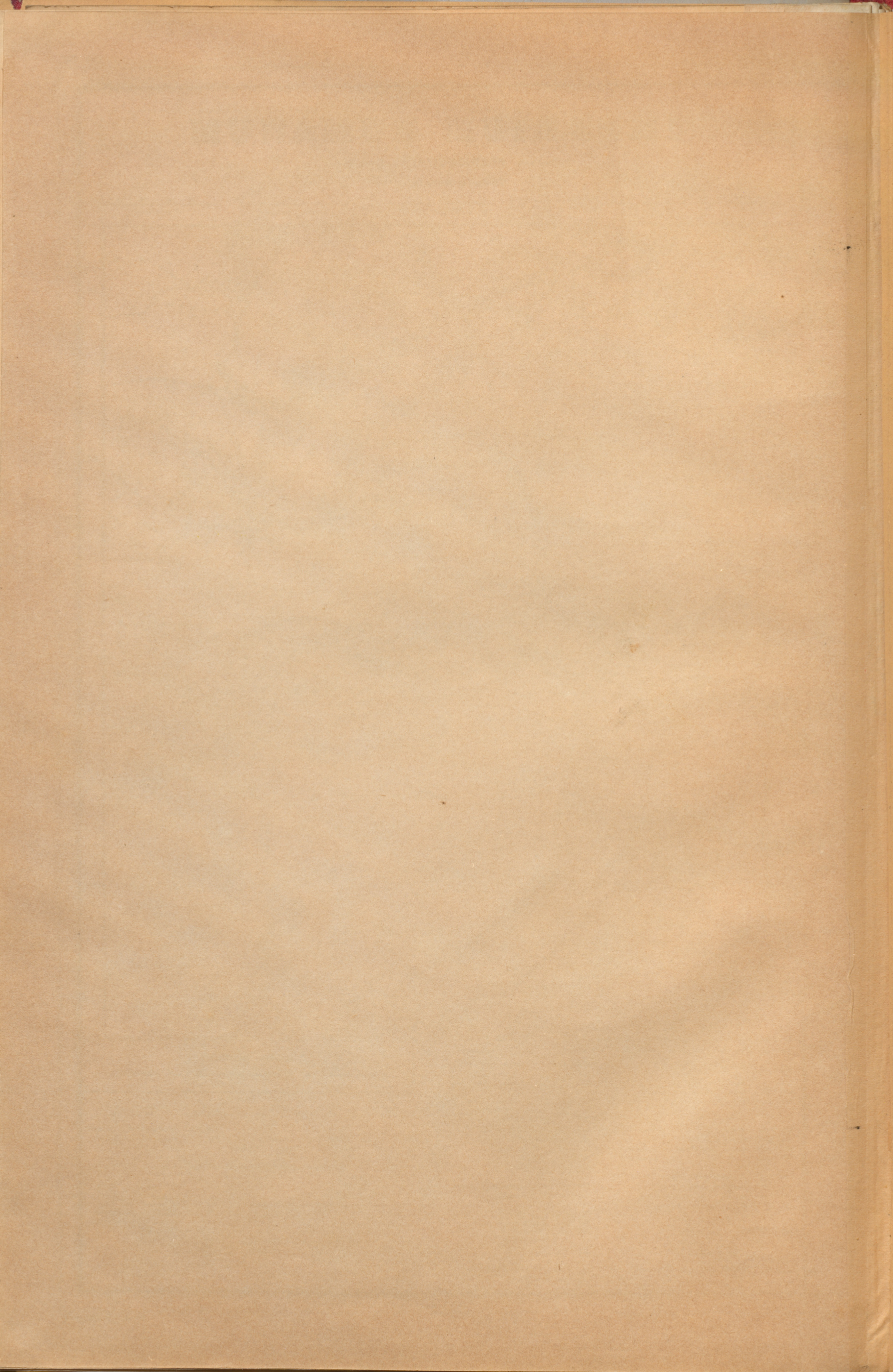
#### U. c. a.Cn.

#### In Africa

- 608 (146) Africa (regio Carthagenensis) provincia proconsularis.
- 680 (74) Cyrenaica
- 724 (30) Aegyptus
- 729 (25) Africae pars occidentalis (Numidia) et meridionalis
- 795 (92 p. Cn.) Mauritania

Imperii Romani fines qui erant imp. Caes. Octav. Augusto.  
post Augustum prolati.

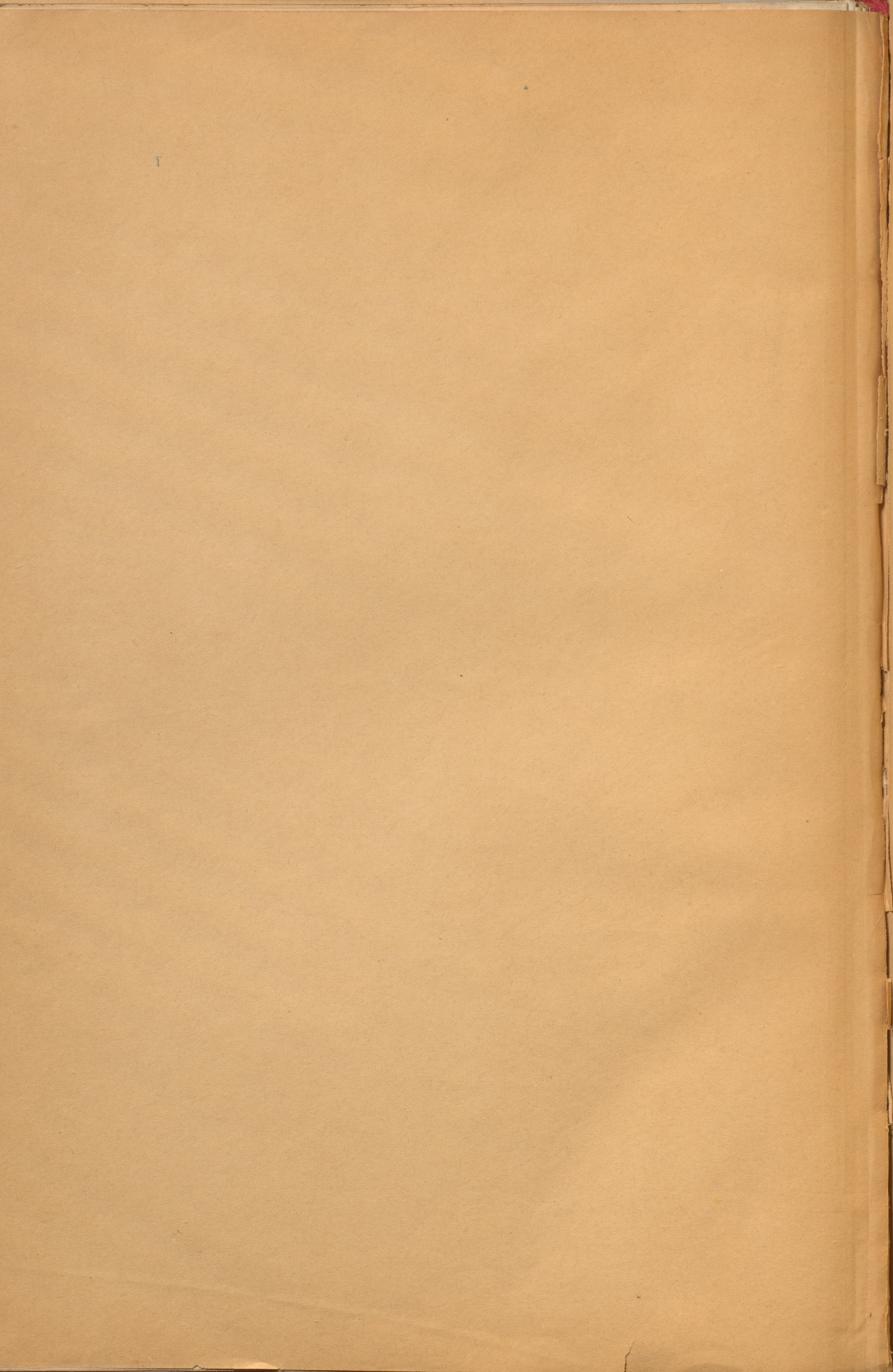














\* G1033  
K54  
1876  
folio



H. KIEPERT'S  
WALL MAPS OF ANCIENT HISTORY.

---

I.

WALL MAP OF ANCIENT GREECE

in 9 sheets. Second improved Edition. 12 s.

Mounted and on Rollers 22 s.

---

II.

WALL MAP OF THE ROMAN EMPIRE

in 9 sheets. 12 s.

Mounted and on Rollers 22 s.

---

III.

WALL MAP OF THE ANCIENT WORLD

for the periods anteceding the Roman Empire

in 6 sheets. 9 s.

Mounted and on Rollers 17 s.

---

IV.

WALL MAP OF THE ANCIENT ITALY

in 6 sheets. 9 s.

Mounted and on Rollers 17 s.

---

V.

NEW WALL MAP OF PALESTINE

in 8 sheets. Fourth Edition. 8 s.

Mounted and on Rollers 17 s.

---

The Maps published by Dietrich Reimer of Berlin are the only editions of  
**WALL MAPS OF ANCIENT GEOGRAPHY**  
for which I desire to be responsible, and which have been corrected by me in accordance with the requirements of the present day. Similar Maps published 20 years ago under my name have not been corrected by me, and I do not consider myself answerable for them in their actual state.

BERLIN.

**Henry Kiepert.**

---