

McGILL UNIVERSITY LIBRARY

Notable art auction...

W. Scott & sons, Montreal.

N8650
F84
1938
Blaokdr

McGill University
N 8650 F84 1938
Three hundred distinctive and v



3 000 942 900 F

THE LIBRARY

BY

Prof. R. Traquair.



Sam. not Acc.

1939

R. Traquair
Montreal Catalogue
CATALOGUE

**Greatest
Art Auction in Montreal's History**

Three Hundred Distinctive and Valuable

Oil Paintings
and
Water Colors

Comprising The Entire Stock of

Messrs. W. SCOTT & SONS

Canada's Oldest Established & Most Reliable Art Dealers
Who Have Recently Sold Their Art Galleries

FRASER BROS., LTD., Auctioneers.

Please retain this Catalogue for your use at the Sales.

N
T
||
||
||

NOTABLE - ART - AUCTION

By Order of

W. SCOTT & SONS

Three Hundred Distinctive and Valuable

Oil Paintings & Water Colors

With Representative Masterpieces by World Renowned
Artists of the English, French, Dutch and Canadian Schools

THE PICTURES WILL BE EXHIBITED
FOR FOUR DAYS

At The W. Scott & Sons, Galleries
1490 Drummond St., Montreal.

On Mon., Tues., Wed., Thurs., March 28th, 29th, 30th & 31st.
Mon. & Tues., 9 A.M.-6 P.M. — Wed. & Thurs., 9 A.M.-10 P.M.

THE PICTURES WILL BE SOLD AT THREE SESSIONS

In the York Room, Windsor Hotel

On Friday Evening, April 1st, at 8 P.M., on Saturday
Afternoon, April 2nd, at 2 P.M., and also on
Saturday Afternoon April 9th, at 2 P.M.

FRASER BROS. LTD., Auctioneers
901 St. James St. W., Montreal.

As a convenience to persons who may be unable to attend any session,
the Auctioneers will faithfully execute all orders without charge.

Conditions of Sale

1. The highest bidder to be the buyer, and if any dispute arise between two or more bidders, the decision of the Auctioneer shall be final.
2. Buyers to give names and addresses on adjudication and make such cash payments on account as may be required; in default of which, the lots purchased shall be resold immediately.
3. Purchases to be removed at the buyers' expense and risk within 24 hours from the conclusion of the sale, and the balance of the purchase money to be paid before delivery; in default of which, the auctioneers will not hold themselves responsible for any loss, breakage or damage whatsoever, but the lot or lots will be held at the sole risk of the purchaser.
4. All lots will be placed on public exhibition for examination by intending purchasers, and Fraser Bros. Ltd. will not be responsible for the correctness of description, authenticity, genuineness, or for any defect or fault in or concerning any lot and make no warranty whatsoever but will sell each lot exactly as it is, WITHOUT RECOURSE.
5. To prevent inaccuracy in delivery and inconvenience in settlement of purchases, no lot can on any account be removed prior to the conclusion of the Sale.
6. Purchasers to pay the Auctioneers 3% over and above the purchase price.
7. Upon failure to comply with the foregoing conditions, any sum deposited as part payment shall be forfeited; any lot or lots uncleared within the time aforesaid shall be resold by either public or private sale without further notice, and any deficiency arising therefrom shall be made good by the defaulter together with all expenses incurred.
8. The Auctioneers will not be responsible for the means of transportation of any lot or lots bought at this sale or charges thereon.

FIRST SESSION

The York Room - Windsor Hotel
Friday Evening, April 1st, at 8 p.m.

Messrs. Scott & Sons, without qualification whatsoever,
guarantee the authenticity of every picture in this Catalogue.

*Dimensions of Pictures are given in inches: the first figure
denoting the width, the second denoting the height.*



FRAMED PRINTS

- 1 **SNIFE**
A. P. Woodcut by Felix Shea.

- 2 **LONG WATER, HAMPTON COURT**
A. P. Etching by Dorothy E. G. Woollard.

- 3 **CHAPEL OF HOTEL BIRON, PARIS**
A. P. Etching by Caroline Armington.

- 4 **WIFE OF PHILIP LE ROI**
A. P. Mezzotint by Fred Miller after Vandyke.

- 5 **JOHN WESLEY**
A. P. Mezzotint by T. Hamilton Crawford.

- 6 **KEW BRIDGE**
A. P. Etching by Frank Brangwyn, R.A.

- 7 **THE HARVESTERS**
A. P. Mezzotint by D. E. G. Woollard,
after Wm. Shayer, Sr.
- 8 **JOHN TAYLOR, GOLFER**
A. P. Mezzotint by Will Henderson.
- 9 **THE DOGE**
A. P. Mezzotint by Clifford R. James, after Bellini.
- 10 **GIRL WITH DOVES**
A. P. Mezzotint by Sydney E. Wilson, after Greuze.
- 11 **THE ROMPS**
A. P. Mezzotint by Sydney E. Wilson, after W. R. Bigg.
- 12 **THE TRUANTS**
A. P. Mezzotint by Sydney E. Wilson, after W. R. Bigg.
- 13 **LORD MANSFIELD**
A. P. Mezzotint by T. Hamilton Crawford,
after Reynolds.
- 14 **SIR WM. BLACKSTONE**
A. P. Mezzotint by T. Hamilton Crawford,
after Reynolds.
- 15 **MONTREAL 1811**
Colored print, published by Ackermann.
- 16 **DAHLIAS**
A. P. Woodcut in color by Phillips.
- 17 **VENETIAN GALLEONS**
Colored A. P. by Frank Brangwyn, R.A.

ZIMMERMAN

- 18 INTERIOR WITH FIGURES, after Josef Israels.
Charcoal, signed, 26¼ x 17½.

JAN VAN ESSEN
Dutch 1854-

- 19 GREEN LANDSCAPE WITH LION
Oil on Canvas, signed, 15¾ x 24¾.

SIR JOHN LAVERY, R.A.
English (Living Artist)

- 20 CAMP ON FEZ ROAD
Oil on Canvas, signed, 13¾ x 5¼.

J. H. WEISSENBRUCH
Dutch 1824-1903

- 21 RIVER AND LANDSCAPE, MAN IN BOAT
Oil on Canvas, signed, 6½ x 13¼.

A. DES FONTAINES
French (Living Artist)

- 22 HARVEST SCENE
Pastel, signed, 15¾ x 10¼.

R. C. CRAWFORD
Scotch

- 23 LOCH LOMOND, NEAR COULPORT
Oil on Panel, unsigned, 17½ x 11½.

J. Y. JOHNSTONE
Canadian 1887-1930

- 24 BRUGES, MOONLIGHT
Oil on Panel, signed, 7¼ x 9⅜.

J. Y. JOHNSTONE
Canadian 1887-1930

- 25 **VOLENDAM**
Oil on Panel, signed, dated 1912, 9 $\frac{3}{8}$ x 7 $\frac{1}{4}$.

J. W. MORRICE
Canadian 1865-1924

- X 26 **WASHING DAY**
Oil on Canvas, mounted, unsigned, 16 $\frac{7}{8}$ x 11 $\frac{3}{8}$.

A. SUZOR-COTE
Canadian 1869-1937

- 27 **THE BUSH NEAR ARTHABASKA**
Oil on Canvas, signed, dated 1910, 25 x 19.

J. H. WEISSENBRUCH
Dutch 1824-1903

- 28 **THE TWO WINDMILLS**
Water Color, signed, 13 $\frac{1}{2}$ x 20 $\frac{1}{2}$.

TH. DE BOCK
Dutch 1851-1904

- 29 **ROAD IN LANDSCAPE**
Oil on Canvas, signed, 39 $\frac{1}{8}$ x 52.

ALBERT NEUHUYS
Dutch 1844-1908

- 30 **INTERIOR, MOTHER AND CHILD**
(Madame Neuhuys)
Water Color, signed, 13 $\frac{3}{4}$ x 17 $\frac{1}{4}$.

JAN VOERMAN
Dutch 1857-

- 31 **LANDSCAPE AND COWS**
Water Color, signed with initials, 18 x 11 $\frac{1}{2}$.

J. H. JURRES
Dutch (Living Artist)

- 32 **THE PLUNDERERS**
Oil on Canvas, signed, 15¼ x 9.

B. DE HOOG
Dutch (Living Artist)

- 33 **INTERIOR, MOTHER AND CHILDREN**
Oil on Canvas, signed, 19 x 25.

W. P. ROBBINS
English (Living Artist)

- \$60
34 **MONKTON**
Water Color, signed, dated 1924, 14¼ x 10¼.

SIR GEORGE CLAUSEN, R.A.
English (Living Artist)

- 35 **FROST AT CAMBLAIN L'ABBEE**
Water Color, signed, 11¾ x 8¾.

S. CURSITER
English (Living Artist)

- 36 **RESTING**
Oil on Canvas, dated, 18 x 16.

JOSEF ISRAELS
Dutch 1824-1911

- 37 **YOUNG GIRL SEATED IN ARMCHAIR READING**
Water Color, signed, 11¾ x 17⅛.

J. W. MORRICE
Canadian 1865-1924

- 38 **THE WOMAN IN THE GRAY HAT**
Oil on Canvas, signed, 20⅛ x 24¼.

F. P. TER MEULEN
Dutch 1843-1927

- 39 **LANDSCAPE AND SHEEP**
Oil on Canvas, signed, 40½ x 43¼.

EMILE-CHARLES LAMBINET
French 1815-1878

- 40 **LANDSCAPE, CATTLE AND BRIDGE**
Oil on Panel, signed, 14 x 9½.

HENRI HARPIGNIES
French 1819-1916

- 41 **THE VALLEY**
Oil on Canvas, dated '97, 39½ x 18.

J. F. MILLET
French 1814-1874

- 42 **GATHERING LOBSTER POTS**
Drawing, signed, 9 x 5.

J. SCHERREWITZ
Dutch (Living Artist)

- 43 **LANDSCAPE, EVENING, WITH HORSES, CART AND FIGURE**
Oil on Canvas, signed, 19½ x 12.

CORNELIUS KRIEGHOFF
Canadian 1812-1872

- 44 **CROSSING THE ICE, QUEBEC**
Oil on Canvas, signed, 15¾ x 12¼.
(Illustrated)

J. W. MORRICE
Canadian 1865-1924

- 45 **FISHING PORT AND LIGHTHOUSE**
Water Color, initialed J.W.M., 11 x 8⅞.

)

\$



[NUMBER 44]

J. W. MORRICE
Canadian 1865-1924

- 46 LANDSCAPE
Water Color, unsigned, 12 x 9.

\$100.00

JOSEF ISRAELS
Dutch 1824-1911

- 47 SAILING THE TOY BOAT
Water Color, signed, and inscribed, 8¼ x 3⅝.

JOSE WEISS
Dutch 1859-1919

- 48 POOL NEAR ARUNDEL, SUSSEX
Oil on Canvas, signed, 14½ x 9½.

McGill University
N
T
GEORG OEDER
German 1846-

- 49 LANDSCAPE
Oil on Canvas, signed, 8¾ x 12½.

C. F. DAUBIGNY
French 1817-1878

- 50 LANDSCAPE
Oil on Canvas, signed, dated 1874, 12½ x 7.

FELIX ZIEM
French 1822-1911

- 51 NEAR CONSTANTINOPLE
Oil on Canvas, signed, 26 x 16½.

CHARLES-EMILE JACQUE
French 1813-1894

- 52 SHEEP GRAZING
Oil on Panel, signed, 12 x 6¼.

H. FANTIN-LATOURE
French 1836-1902

- 53 LA CIGALE
Oil on Canvas, signed, 18½ x 22.

FRANK BRANGWYN, R.A.
English (Living Artist)

- 54 THE GAME OF EUCHRE
Oil on Canvas, signed with initials F.B., 35 x 34.

SIR D. Y. CAMERON, R.A.
English (Living Artist)

- 55 LOCH AYLORT
Oil on Canvas, signed, 12¾ x 10½.

M. A. J. BAUER
Dutch 1867-1932

We have a Bauer work drawn

- X 56 **THE WALLS OF JERUSALEM, DAMASCUS GATE**
Water Color, signed, 36 x 24.

\$ 150

SIR JOHN LAVERY, R.A.
English (Living Artist)

- 57 **AFTERGLOW**
Oil on Canvas, signed, 30 x 25.

GEORGE WRIGHT
English (Living Artist)

- 58 **FULL CRY**
Oil on Canvas, signed, 13 x 9.

J. C. MAGGS
English

- 59 **COACHING SCENE**
Oil on Canvas, signed, dated, 24 x 12.

J. C. MAGGS
English

- 60 **COACHING SCENE**
Oil on Canvas, signed, dated 1873, 24 x 12.

LEON LHERMITTE
French 1844-1925

- 61 **LES GLANEUSES**
Oil on Canvas, signed, dated 1909, 49¼ x 38.
(Illustrated)

F. ROYBET
French 1840-1920

- 62 **THE PRINT COLLECTOR**
Oil on Panel, signed, 11¾ x 15¾.



[NUMBER 61]

W. RUSSELL FLINT, R.A.
English (Living Artist)

- 63 ARTEMISIA
Water Color, signed, 23 $\frac{1}{8}$ x 12 $\frac{7}{8}$.

JOHN ZOFFANY
English 1733-1810

- 64 PORTRAIT OF A YOUNG MAN
Oil on Canvas, painted oval, unsigned, 15 x 18.

WM. SHAYER, SR.
English 1788-1879

- 65 STONEY CROSS, NEW FOREST
Oil on Canvas, signed, 36 x 28.

\$600

J. W. MORRICE
Canadian 1865-1924

- 66 MAISONS, CUBA
Oil on Canvas, signed, 24 x 20.
(Illustrated)

\$800 - 900

J. W. MORRICE
Canadian 1865-1924

- 67 YOUNG ARAB
Oil on Panel, unsigned, 9 $\frac{1}{4}$ x 13.

J. J. HENNER
French 1829-1905

- 68 NUDE SEATED IN LANDSCAPE
Oil on Panel, signed, 9 $\frac{1}{4}$ x 15 $\frac{3}{4}$.

J. W. MORRICE
Canadian 1865-1924

- 69 NUDE SEATED
Oil on Panel, unsigned, 12 $\frac{7}{8}$ x 20.

N
T
I
I



[NUMBER 66]

CORNELIUS KRIEGHOFF
 Canadian 1812-1872

- 70 **INDIAN AND SQUAWS, WINTER**
Oil on Canvas, signed, 22¼ x 15¾.

\$75

X

PAUL KANE (Att'd to)
 Canadian 1810-1883

- 71 **INDIAN ENCAMPMENT, EARLY MORNING**
Oil on Canvas, unsigned, 53 x 33.

M. CULLEN
 Canadian 1866-1934

- 72 **AFTERNOON, EARLY WINTER**
Oil on Canvas, signed, 21½ x 17½.

ALEXANDRE BERCOVITCH
Canadian (Living Artist)

- 73 **ROCKY COAST, GASPE**
Oil on Canvas, signed, 28½ x 22¼.

B. DE HOOG
Dutch (Living Artist)

- 74 **INTERIOR, MOTHER AND BABIES**
Oil on Canvas, signed, 9¾ x 7¾.

E. LIGTELYN
Dutch (Living Artist)

- 75 **YOUNG HOUSEWIFE SEWING**
Oil on Canvas, signed, 9¾ x 11¾. \$600

A. J. T. MONTICELLI
French 1824-1866

- 76 **FETE CHAMPETRE**
Oil on Panel, signed, 18 x 12.

SIR HENRY RAEBURN
Scotch 1755-1823

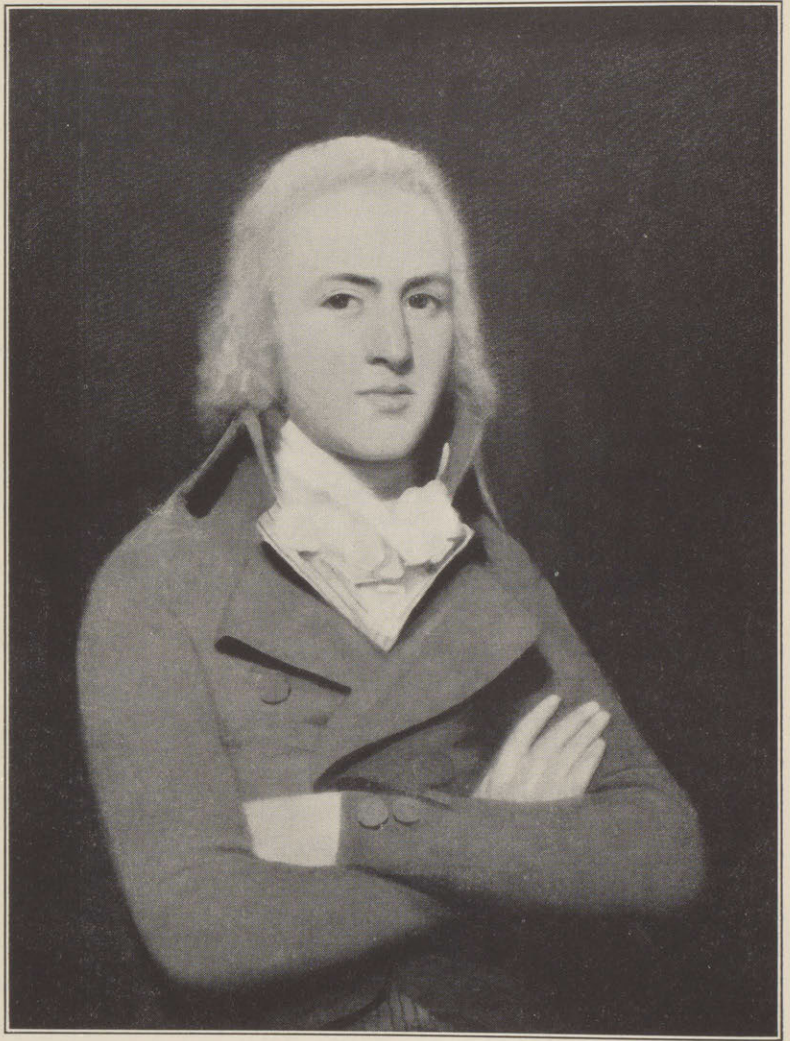
- 77 **PORTRAIT OF SIR JOHN SINCLAIR, BT.,
AS A YOUNG MAN**
Oil on Canvas, 25 x 30.
(Illustrated)

J. W. MORRICE
Canadian 1865-1924

- 78 **WOMAN IN BROWN, PORTRAIT OF _____**
Oil on Canvas, unsigned, 20 x 36½.

F. P. TER MEULEN
Dutch 1843-1927

- 79 **LEAFY LANDSCAPE WITH COWS**
Water Color, signed, 27¼ x 17.



[NUMBER 77]

\$300
+
W. RUSSELL FLINT, R.A.
English (Living Artist)

- 80 CREW OF THE SUZETTE AT MORNING EXERCISE
Water Color, signed, 30½ x 21½.

FRANK BRANGWYN, R.A.
English (Living Artist)

- 500
+
81 THE CHESS PLAYERS, EASTERN SCENE
Oil on Canvas, signed with initials, F.B., 38 x 28. X

ARCHIBALD BARNES, R.C.A.
Canadian (Living Artist)

- 82 THE YELLOW SHAWL
Oil on Canvas, signed, 20 x 24. \$600

ALEXANDRE BERCOVITCH
(Canadian Living Artist)

- 83 ON THE GASPE COAST
Tempera, signed, 19½ x 15. 300

J. W. MORRICE
Canadian 1865-1924

- 84 PAYSAGE, TRINIDAD
Oil on Canvas, signed, 32 x 24¼.

G. LOISEAU
French 1865-1928

- 85 LA RUE DE CLIGANCOURT, PARIS
Oil on Canvas, signed, dated 1924, 23½ x 28¼.

RAOUL DUFY
French (Living Artist)

- 85a EPSOM
Water Color, signed, dated 1930, 25½ x 19.

M. L. E. MAUFRA
French 1861-1918

- 86 LE PORT DE HAVRE
Oil on Canvas, signed, 32 x 24.

RAOUL DUFY
French (Living Artist)

- 86a GOLFE JUAN, LE GRAND PIN
Water Color, signed, 13½ x 19¼.

HENRI MORET
French 1856-1913

- 87 OUESSANT, JOUR CALME
Oil on Canvas, signed, 29 x 36½.

ANDRE DERAÏN
French (Living Artist)

- 87a TETE DE JEUNE FILLE
Oil on Panel, signed, 13 x 16.

M. UTRILLO
French (Living Artist)

- 88 CLAIR DE LUNE, EGLISE DE TASSENIERE, JURA
Gouache, signed, 17½ x 12½.

D. KLOTZ
Austrian (Living Artist)

- 89 LANDSCAPE
Oil on Canvas, signed, dated 1927, 18 x 22½.

HENRI MORET
French 1856-1913

- 90 PECHEURS A LA LIGNE
Oil on Canvas, signed, 23½ x 18.

ALEXANDRE BERCOVITCH
Canadian (Living Artist)

- 91 RED FLOWERS IN GREEN JAR
Oil on Canvas, signed, 20 x 23½.

S. BORENSTEIN
Canadian (Living Artist)

- 92 NEAR PARK RANGER'S HOUSE, MOUNT ROYAL,
AUTUMN
Gouache, signed, 26¼ x 19½.

EMMA CIARDI
Italian 1879-1932

- 93 VENICE
Oil on Panel, signed, 15 x 11.

J. H. JURRES
Dutch (Living Artist)

- 94 HORSEMEN
Oil on Panel, signed, 5⅞ x 9¼.

J. SCHERREWITZ
Dutch (Living Artist)

- 95 HORSE AND CART ON THE DUNES
Oil on Panel, signed, 9⅞ x 6¼.

J. Y. JOHNSTONE
Canadian 1887-1930

- 96 NEAR MANIWAKI
Oil on Panel, signed, 7¼ x 5⅝.

W. S. MAXWELL, R.C.A.
Canadian (Living Artist)

- 97 ASCENSION, P. Q.
Water Color, signed, 11¾ x 8¾.

END OF FIRST SESSION

SECOND SESSION

The York Room . . . Windsor Hotel
Saturday Afternoon, April 2nd, at 2 p.m.

Messrs. Scott & Sons, without qualification whatsoever, guarantee the authenticity of every picture in this Catalogue.

Dimensions of Pictures are given in inches: the first figure denoting the width, the second denoting the height.

- †
- 98 **LANDSCAPE AND SHEEP**
Colored Facsimile.
- 99 **CORFE CASTLE**
A. P. Aquatint by Joseph Kirkpatrick.
- 100 **DIEPPE**
A. P. Etching by Wesley Manning.
- 101 **THE CONNOISSEUR**
A. P. Etching by Percy Lancaster.
- 102 **MRS. ECKENALL**
Colored A. P. by E. Leslie Haynes.
- 103 **MRS. BROMHEAD**
A. P. Stipple engraving by Eugene Tily,
after John Downman.
- 104 **LITTLE MOZART**
A. P. Mezzotint by Jessie Furber after Carmontelle.

- 105 **DUCHESS OF MARLBOROUGH**
A. P. Mezzotint by Percy H. Martindale,
after Reynolds.
- 106 **VICOMTE DE POLIGNAC**
A. P. Mezzotint by Will Henderson after Nattier.
107. **MISS FERGUSON**
A. P. Stipple engraving by Payran,
after John Downman.
- 108 **MISS KEMBLE**
A. P. Stipple engraving by Eugene Tily,
after John Downman.
- 109 **MISS MUIR**
A. P. Stipple engraving by Payran,
after John Downman.
- 110 **MRS. JENKINS**
A. P. Stipple engraving by Leon Salles,
after John Downman.
- 111 **MRS. SMITH-NIECE**
A. P. Mezzotint by Arthur Hogg after Reynolds.
- 112 **NELSON**
A. P. Mezzotint by Wright after Hoppner.
- 113 **MADONNA OF THE TREES**
A. P. Mezzotint by T. G. Stevenson after Bellini.
- 114 **TWO AMBASSADORS**
A. P. Mezzotint by Blackall, after Holbein.

- McGill University
- N
T
- 115 **HEART OF PERTHSHIRE**
A. P. Etching by Sir D. Y. Cameron, R.A.
- 116 **A WEST HIGHLANDER**
A. P. Etching by Herbert Dicksee.
- 117 **SIR RONALD and ROBERT FERGUSON of RAITH**
A. P. Mezzotint by Arthur Hogg after Raeburn.
- 118 **JAPANESE PEONIES**
A. P. Woodcut in color by Y. Urushibara.
- 119 **PEVENSEY LEVEL**
A. P. Etching by Wesley Manning.
- 120 **DRINSAN**
A. P. Etching by Sir D. Y. Cameron, R.A.
- 121 **TANTALLON**
A. P. Etching by Sir D. Y. Cameron, R.A.

ZIMMERMAN

- 122 **INTERIOR WITH FIGURES**, after Josef Israels
Charcoal, signed, dated 1885, 25 $\frac{3}{4}$ x 17 $\frac{3}{4}$.

JOHN FR. HULK
Dutch 1855-

- 123 **DUCK AND DUCKLINGS**
Water Color, signed, 23 $\frac{5}{8}$ x 15 $\frac{5}{8}$.

J. Y. JOHNSTONE
Canadian 1887-1930

- 124 **OLD MILL**
Oil on Panel, signed, 7 $\frac{1}{8}$ x 5 $\frac{3}{8}$.

J. Y. JOHNSTONE
Canadian 1887-1930

- 125 **VOLENDAM**
Oil on Panel, signed with initials, dated 1912,
8⁵/₈ x 6¹/₄.

WILLEM STEELINK
Dutch 1856-1928

- 126 **LANDSCAPE AND SHEEP**
Oil on Canvas, signed, 13³/₈ x 9¹/₂.

F. W. HUTCHISON, N.A.
Canadian (Living Artist)

- 127 **OLD HOUSE AT RIGAUD, QUE.**
Oil on Board, unsigned, 12 x 9.

JOHN HAMMOND, R.C.A.
Canadian (Living Artist)

- 128 **DRYING THE NETS**
Oil on Canvas, signed, dated 1882, 23¹/₂ x 15.

F. A. VERNER
Canadian 1836-1928

- 129 **INDIAN CAMP AND CANOES**
Water Color, signed, dated 1892, 23³/₄ x 11³/₈.

G. NORWELL
Canadian (Living Artist)

- 130 **WINTER LANDSCAPE**
Water Color, signed, 17⁷/₈ x 16¹/₈.

G. NORWELL
Canadian (Living Artist)

- 131 **WINTER LANDSCAPE**
Water Color, signed, 17⁷/₈ x 16¹/₈.

ALEXANDRE BERCOVITCH
Canadian (Living Artist)

- 132 STILL LIFE, FLOWERS
Oil, signed, 20 x 22.

J. SCHERREWITZ
Dutch (Living Artist)

- 133 LANDSCAPE, HORSE AND CART ON THE DUNES
Oil on Panel, signed, 10 x 4 $\frac{7}{8}$.

A. M. GORTER
Dutch 1866-1932

- 134 SUNNY WOODLAND ROAD AND COWS
Oil on Canvas, signed, 10 x 14 $\frac{1}{2}$.

TH. DE BOCK
Dutch 1851-1904

- 135 LANDSCAPE AND BUILDINGS
Charcoal, signed, 17 x 10 $\frac{1}{8}$.

J. H. WEISSENBRUCH
Dutch 1824-1903

- 136 COAST SCENE AND BOAT
Water Color, signed, 20 $\frac{1}{4}$ x 13 $\frac{1}{4}$.

JAMES MARIS
Dutch 1837-1899

- 137 LANDSCAPE, CLOUDY SKY
Oil on Panel, signed, 12 $\frac{1}{2}$ x 7 $\frac{1}{4}$.

J. H. WEISSENBRUCH
Dutch 1824-1903

- 138 LANDSCAPE, WITH MAN IN BOAT AND CHURCH
TOWER
Oil on Canvas, signed, 16 $\frac{1}{2}$ x 11 $\frac{1}{2}$.

W. B. THOLEN
Dutch 1860-1930

- 139 **YACHTING**
Oil on Canvas, mounted on panel, signed and dated
'13, 14½ x 7½.

HENRI HARPIGNIES
French 1819-1916

- 140 **LANDSCAPE**
Water Color, signed, 6⅞ x 8⅞.

JAN VOERMAN
Dutch 1857-

- 141 **RIVER SCENE WITH CATTLE DRINKING AND
VILLAGE IN DISTANCE**
Oil on Canvas, signed, 30 x 18½.

CORNELIUS KRIEGHOFF
Canadian 1812-1872

- 142 **INDIANS AND SQUAWS, WINTER**
Oil on Canvas, signed, 12¾ x 9½.

UNKNOWN

- 143 **THE WOUNDED VETERAN**
Oil on Panel, signed, 5 x 6¾.

B. DE HOOG
Dutch (Living Artist)

- 144 **THE LITTLE FAMILY**
Oil on Canvas, signed, 16 x 12.

J. H. VAN MASTENBROEK
Dutch (Living Artist)

- 145 **CANAL AT DELFSHAVEN**
Oil on Canvas, signed, 24 x 16.

F. P. TER MEULEN
Dutch 1843-1927

- 146 LANDSCAPE AND SHEEP
Oil on Canvas, signed, 30 x 21.

IVAN F. CHOULTSE
Russian (Living Artist)

- 147 THE POOL OF SILENCE
Oil on Canvas, signed, 25 x 20 $\frac{3}{4}$.

WILLEM MARIS
Dutch 1884-1910

- 148 LANDSCAPE AND COW DRINKING
Oil on Canvas, signed, 20 $\frac{1}{2}$ x 15 $\frac{1}{2}$.

ALICE FANNER
English (Living Artist)

- 149 STRAND-ON-THE-GREEN, CHISWICK, LONDON
Water Color, signed, 13 $\frac{1}{4}$ x 9 $\frac{1}{4}$.

A. N. FOWERAKER
English (Living Artist)

- 150 GIBRALTAR, MOONLIGHT
Water Color, signed, 13 $\frac{7}{8}$ x 10.

SIR D. Y. CAMERON, R.A.
English (Living Artist)

- 151 ARDGOUR
Oil on Canvas, signed, 35 x 25 $\frac{1}{2}$.
(Illustrated)

J. W. MORRICE
Canadian 1865-1924

- 152 IN THE ORCHARD, LE POLDU
Oil on Canvas, signed, 32 x 24.

152a-

\$70



[NUMBER 151]

J. W. MORRICE
Canadian 1865-1924

- 153 LANDSCAPE
Water Color, signed, dated '90, 11¼ x 8¾.

J. H. WEISSENBRUCH
Dutch 1824-1903

- 154 COUNTRY ROAD, SUNSET
*Water Color, signed, 10¾ x 15¾.
(Illustrated)*

WILLEM MARIS
Dutch 1884-1910

- 155 RIVER AND MEADOW WITH WINDMILLS
AND COWS DRINKING
Oil on Canvas, signed, 14½ x 10½.

HENRI HARPIGNIES
French 1819-1916

- 156 LANDSCAPE
Oil on Canvas, signed and dated '97, 12 x 17.

WILLEM MARIS
Dutch 1884-1910

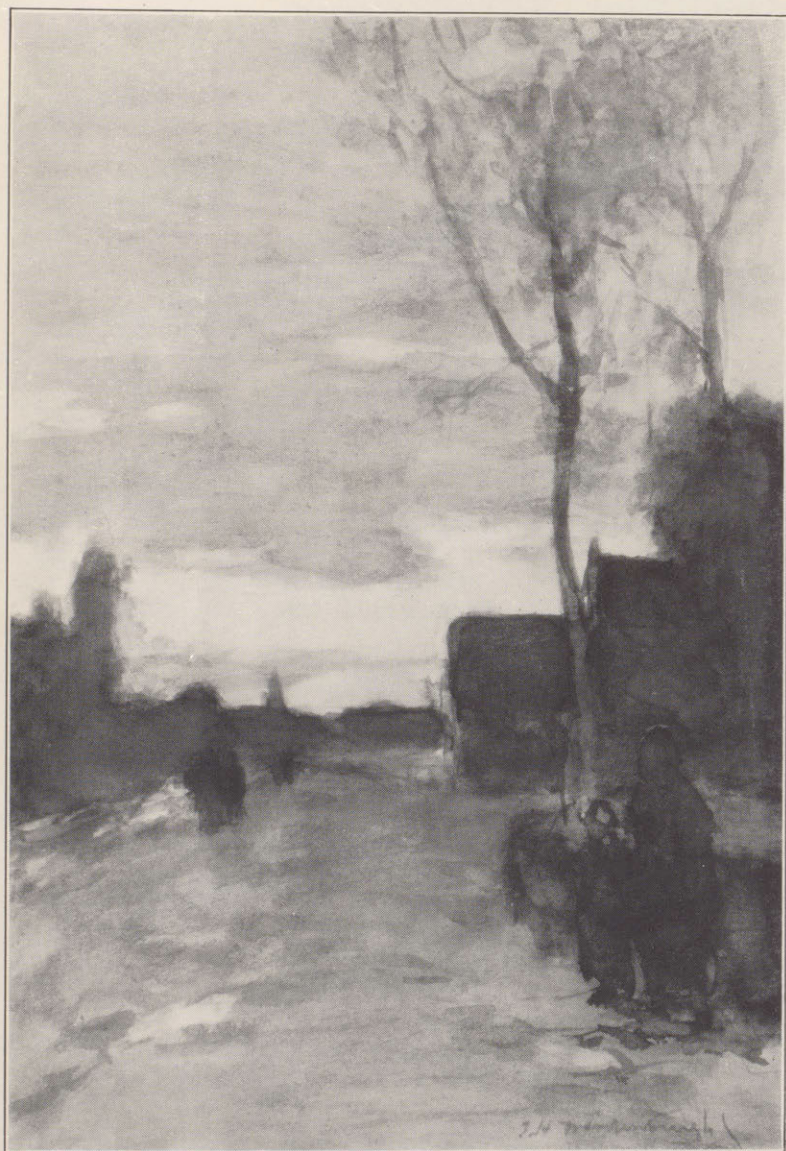
- 157 LANDSCAPE AND COWS, MORNING
Oil on Canvas, signed, 68 x 34½.

J. H. WEISSENBRUCH
Dutch 1824-1903

- 158 LANDSCAPE AND CANAL WITH COWS
Oil on Canvas, signed, 13 x 8.

J. W. MORRICE
Canadian 1865-1924

- 159 MAPLE SUGAR CAMP
Oil on Canvas, signed, 20 x 16.



[NUMBER 154]

G. LOISEAU
French 1865-1928

- 160 THE SEINE
Oil on Canvas, signed, 21½ x 29.

M. L. E. MAUFRA
French 1861-1918

- 161 SOLEIL COUCHANT SUR L'OISE
Oil on Canvas, signed, 22 x 19.

HENRI LE SIDANER
French (Living Artist)

- 162 SAN GEORGIA, VENICE
Oil on Canvas, signed, 25 x 18.

G. LOISEAU
French 1865-1928

- 163 PORT DE FECAMP
Oil on Canvas, signed, dated 1910, 24¼ x 18½.

J. W. MORRICE
Canadian 1865-1924

- 164 THE BOOKSTALLS, PARIS, AUTUMN
Oil on Canvas, signed, 18 x 15.

S. V. E. LEPINE
French 1836-1892

- 165 ON THE SEINE
Oil on Canvas, signed, 8½ x 12¼.

J. W. MORRICE
Canadian 1865-1924

- 166 GIRL'S HEAD
Oil on Canvas, unsigned, 9 x 12¼.

FRANCOIS BONVIN
French 1817-1887

- 167 THE BLACKSMITH
Oil on Canvas, signed, dated 1883, 10¼ x 15½.

ETIENNE-PIERRE-THEODORE ROUSSEAU
French 1812-1867

- 168 THE FISHERMAN
Sepia Drawing, signed, 11½ x 8¾.

A. J. T. MONTICELLI
French 1824-1886

- 169 FETE CHAMPETRE
Oil on Canvas, signed, 10½ x 14.

W. B. THOLEN
Dutch 1860-1931

- 170 LANDSCAPE, EVENING
Oil on Canvas, signed, 30 x 20.

J. SCHERREWITZ
Dutch (Living Artist)

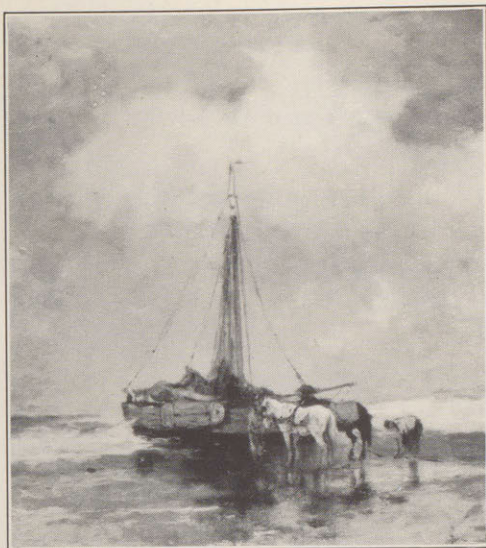
- 171 BOAT ON THE SHORE, HOLLAND
Oil on Canvas, signed, 21½ x 23½.
(Illustrated)

ALBERT NEUHUYS
Dutch 1844-1908

- 172 INTERIOR, MINDING BABY
Oil on Canvas, signed, dated 1887, 12½ x 16½.

J. H. JURRES
Dutch (Living Artist)

- 173 JEZEBEL
Charcoal Drawing, unsigned, 14½ x 23¼.



[NUMBER 171]

JAMES MARIS
Dutch 1837-1899

- 174 **THE YOUNG ARTIST**
Water Color, signed, 19½ x 17¾

KAREL KLINKENBERG
Dutch 1852-

- 175 **LEIDEN**
Oil on Panel, signed, 13½ x 5½.

W. B. THOLEN
Dutch 1861-1931

- 176 **THE ANGLERS**
Oil on Canvas, signed, 16 x 12½.

ARCHIBALD BARNES, R.C.A.
Canadian (Living Artist)

- 177 **BOYS' HEAD**
Oil on Canvas, signed, 8¾ x 11½.

S. J. LAMORNA BIRCH, R.A.
English (Living Artist)

- 178 **OLD SEDGES, TROUT POOL**
Oil on Canvas, signed, 23½ x 19½.

CORNELIUS KRIEGHOFF
Canadian 1812-1872

- 179 **ON THE TRAIL, WINTER**
Oil on Canvas, signed, 18 x 13.

CORNELIUS KRIEGHOFF
Canadian 1812-1872

- 180 **THE PORTAGE, AUTUMN**
Oil on Canvas, signed, 18¼ x 13.

J. PALARDY
Canadian (Living Artist)

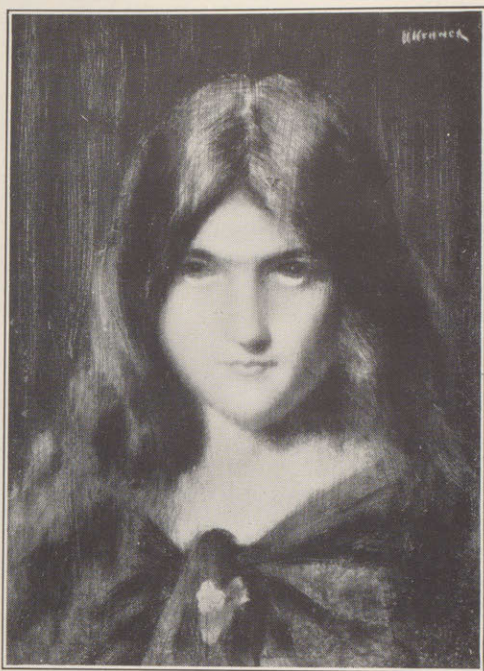
- 181 **COUNTRY SCHOOL AND CHILDREN**
Oil on Canvas, signed, dated '34, 20 x 16.

ALEXANDRE BERCOVITCH
Canadian (Living Artist)

- 182 **WINTER LANDSCAPE, OUTREMONT**
Tempera, unsigned, 23½ x 18.

M. CULLEN
Canadian 1866-1934

- 183 **MONTREAL FROM THE RIVER**
Oil on Canvas, signed, 18 x 15.



[NUMBER 185]

J. W. MORRICE
Canadian 1865-1924

- 184 **THE ORCHARD**
Oil on Canvas, unsigned, 12¼ x 17¼.

J. J. HENNER
French 1829-1905

- 185 **HEAD OF A GIRL**
Oil on Panel, signed, 9½ x 13.
(Illustrated)

J. W. MORRICE
Canadian 1865-1924

- 186 **HEAD OF A GIRL**
Oil on Canvas, unsigned, 11½ x 8½.

SYDNEY STARR
English (Living Artist)

- 187 **YOUNG WOMAN**
Oil on Panel, signed, dated '86, 5 x 8½.

ALGERNON TALMAGE, R.A.
English (Living Artist)

- 188 **HUNTSMAN AND HOUNDS**
Oil on Canvas, signed, dated '26, 24½ x 20¼.

B. J. BLOMMERS
Dutch 1845-1914

- 189 **THE PET BIRD**
Oil on Canvas, signed, 5½ x 8¼.

JOSE WEISS
Dutch 1859-1919

- 190 **NEAR ARUNDEL, SUSSEX**
Oil on Canvas, signed, 14¾ x 9¾.

BERTRAM PRIESTMAN, R.A.
English (Living Artist)

- 191 **SUFFOLK FLOODS, AUGUST 1912**
Oil on Canvas, signed, 30 x 25.

TH. RIBOT
French 1863-1891

- 192 **THE GUITAR PLAYER**
Oil on Canvas, signed, 18 x 14¼.

R. P. BONINGTON
English 1801-1828

- 193 **A SAILOR**
Oil on Canvas, unsigned, 14 x 18.

BERNARD DE HOOG
Dutch (Living Artist)

- 194 **WOMAN PRAYING**
Oil on Canvas, signed, 39½ x 31½.

J. W. MORRICE
Canadian 1865-1924

- 195 **JAMAICA**
Oil on Canvas, unsigned, 28½ x 24¼.

M. CULLEN
Canadian 1866-1934

- 196 **BEHIND MOUNT ROYAL, WINTER**
Oil on Canvas, signed, 21¾ x 17¼.

ALEXANDRE BERCOVITCH
(Canadian Living Artist)

- 197 **ROCKBOUND COAST, GASPE**
Oil on Canvas, signed, 23 x 19½.

W. RUSSELL FLINT, R.A.
English (Living Artist)

- 198 **BARBARA AT IONA**
Water Color, signed, 21¾ x 14½.

WM. SHAYER, SR.

- 199 **LOCH AT LYNDHURST**
Oil on Canvas, 23¾ x 18.

EMMA CIARDI
Italian 1879-1932

- 200 VENICE
Oil on Panel, signed, 15½ x 11½.

A. Y. JACKSON
Canadian (Living Artist)

- 201 BIRCHES, LAC MAZINAWE
Oil on Panel, signed, 10½ x 8.

MONTAGU DAWSON
English (Living Artist)

- 202 SONG OF THE SEA, THE OBERON
Oil on Canvas, signed, 26 x 24.

B. J. BLOMMERS
Dutch 1845-1914

- 203 INTERIOR, THE EVENING MEAL
Oil on Canvas, signed, 19 x 16.

BERNARD DE HOOG
Dutch (Living Artist)

- 204 FEEDING BABY
Oil on Canvas, signed, 8¼ x 10¼.

LOUIS B. HURT
English (Living Artist)

- 205 EDGE OF LOCH AWE, WITH HIGHLAND CATTLE
Oil on Canvas, signed, 40¼ x 24.

E. M. WIMPERIS, R.I.
English

- 206 LANDSCAPE AND TREES
Water Color, unsigned, 14 x 9¾.

E. RENAUD

- 207 **THE ORCHARD**
Oil on Canvas, signed, 30 x 21.

R. C. CRAWFORD
Scotch

- 208 **FARM AT GANOCH HEAD, BUTE**
Oil on Canvas, initialed R.C.C., 1893, 36 x 24.

J. PALARDY
Canadian (Living Artist)

- 209 **SHADOWS**
Oil on Canvas, signed, dated '35, 16 x 12.

A. MACDONALD
Canadian (Living Artist)

- 210 **STILL LIFE**
Wated Color, signed, 13 $\frac{3}{4}$ x 17 $\frac{3}{4}$.

J. Y. JOHNSTONE
Canadian 1887-1930

- 211 **IN HOLLAND**
Oil on Panel, signed, dated 1912, 9 $\frac{3}{4}$ x 7 $\frac{1}{4}$.

HENRY H. MUHRMAN
American 1854-

- 212 **FROM THE TERRACE**
Pastel, signed, 10 $\frac{3}{4}$ x 8.

JAMES MARIS
Dutch 1837-1899

- 213 **INTERIOR, WITH HALBERDIERS**
Oil on Canvas, signed, dated, 8 $\frac{1}{2}$ x 11 $\frac{1}{2}$.

S. BORENSTEIN
Canadian (Living Artist)

- 214 NEAR PARK RANGER'S HOUSE, MOUNT ROYAL,
SPRING
Gouache, signed, 18 x 17½.

J. H. VAN MASTENBROEK
Dutch (Living Artist)

- 215 CANAL SCENE, HOLLAND
Lithograph, 25¾ x 28.

END OF SECOND SESSION

THIRD SESSION

The York Room . . . Windsor Hotel
Saturday Afternoon, April 9th, at 2 p.m.

Messrs. Scott & Sons, without qualification whatsoever,
guarantee the authenticity of every picture in this Catalogue.

*Dimensions of Pictures are given in inches: the first figure
denoting the width, the second denoting the height.*



- 216 **COMING STORM**
A. P. Etching by H. Mulready Stone.
- 217 **SISTINE MADONNA**
Colored Facsimile after Raphael.
- 218 **THE OLD LADY OF THREADNEEDLE STREET**
A. P. Etching by Fred Farrell.
- 219 **LONDON FROM PARLIAMENT HILL**
A. P. Etching by C. R. W. Nevinson.
- 220 **THE TYNE**
A. P. Etching by Wm. Walcott.
- 221 **ROYAL CALPE HUNT**
Colored A. P. by Lionel Edwards.
- 222 **THE FLINT AND DENBIGH HUNT**
Colored A. P. by Lionel Edwards.

\$20

- 223 **THE HEYTHORP HUNT**
Colored A. P. by Lionel Edwards.
- 224 **THE KILKENNY HUNT**
Colored A. P. by Lionel Edwards.
- 225 **THE ROMPS**
A. P. Mezzotint by Sydney E. Wilson
after W. R. Bigg.
- 226 **THE TRUANTS**
A. P. Mezzotint by Sydney E. Wilson
after W. R. Bigg.
- 227 **SIR RONALD ROBERT FERGUSON OF RAITH**
A. P. Mezzotint by Arthur Hogg, after Raeburn.
- 228 **SIR WM. BLACKSTONE**
A. P. Mezzotint by T. Hamilton Crawford
after Reynolds.
- 229 **THE GOLDEN HORN**
Colored A. P. by Frank Brangwyn, R.A.
- 230 **THE BALLET**
A. P. Etching in color by L. Brouet.

J. H. WEISSENBRUCH
Dutch 1824-1903

- 231 **STABLE INTERIOR**
Oil on Panel, signed, 12½ x 8¾.

W. G. F. JANSEN
Dutch

- 232 **HARNESSING THE HORSE**
Oil on Panel, signed, 13¼ x 9½.

A. M. GORTER
Dutch 1868-1932

- 233 WOODLAND ROAD AND COWS
Oil on Canvas, signed, 10 x 14.

R. C. CRAWFORD
Scotch

- 234 FISHING SMACK AT PORTAN CROSS
Oil on Canvas, initialed R.C.C., dated '86, 30 x 18.

ALEXANDRE BERCOVITCH
Canadian (Living Artist)

- 235 ROCKY COAST, GASPE
Tempera, signed 19 x 16.

J. PALARDY
Canadian (Living Artist)

- 236 JOUR DE PARDON EN BRETAGNE
Oil on Canvas, signed, dated '35, 16 x 12.

S. BORENSTEIN
Canadian (Living Artist)

- 237 ON DORCHESTER STREET, MONTREAL
Gouache, signed, 18 x 17½.

J. Y. JOHNSTONE
Canadian 1887-1930

- 238 ALKMAAR, HOLLAND
Oil on Panel, signed, dated 1912, 9¾ x 7¼.

J. Y. JOHNSTONE
Canadian 1887-1930

- 239 OUTSIDE THE BARRACKS, NIGHT
Oil on Panel, signed, 7 x 5.

SIR GEORGE CLAUSEN, R.A.
English (Living Artist)

- 240 NEAR PALERMO
Water Color, signed, 11¾ x 8¾.

J. H. WEISSENBRUCH
Dutch 1824-1903

- 241 GREEN LANDSCAPE WITH TREES AND FIGURES
Water Color, signed, 21¼ x 13.

J. SCHERREWITZ
Dutch (Living Artist)

- 242 LANDSCAPE, EDGE OF THE WOODS
Oil on Canvas, signed, 15½ x 11.

TH. DE BOCK
Dutch 1851-1904

- 243 LANDSCAPE AND CANAL
Oil on Canvas, signed, 15¾ x 24.

W. STEELINK
Dutch 1856-1928

- 244 LANDSCAPE AND SHEEP
Oil on Canvas, signed, 18½ x 12½.

KARL HEFFNER
German 1849-1920

- 245 SURREY FLOODS
Oil on Canvas, signed, 32½ x 46.

WILLEM MARIS
Dutch 1884-1910

- 246 LANDSCAPE AND COWS
Water Color, signed, 9½ x 14¼.

J. W. MORRICE
Canadian 1865-1924

\$75 X

- 247 **CLIFFS**
Water Color, unsigned, 13 $\frac{3}{4}$ x 9 $\frac{3}{4}$.

J. W. MORRICE
Canadian 1865-1924

- 248 **FIGURE**
Oil on Canvas, unsigned, 12 x 19.

JAMES MARIS
Dutch 1837-1899

- 249 **VIEW OF A TOWN**
Water Color, signed, 11 $\frac{1}{2}$ x 13 $\frac{3}{4}$.
(Illustrated)

SIR JOHN LAVERY, R.A.
English (Living Artist)

- 250 **MARKET PLACE, TANGIERS**
Oil on Canvas, signed, 30 x 25.

CORNELIUS KRIEGHOFF
Canadian 1812-1872

- 251 **INDIAN TRAPPER ON SNOWSHOES**
Oil on Canvas, signed, 9 $\frac{1}{4}$ x 11 $\frac{1}{4}$.

J. SCHERREWITZ
Dutch (Living Artist)

- 252 **LANDSCAPE WITH SHEPHERD AND SHEEP ON
THE DUNES**
Oil on Canvas, signed, 43 x 25 $\frac{1}{4}$.

M. CAZIN
French 1845-

- 253 **OLD WOODEN BRIDGE, PARIS**
Oil on Canvas, initialed M.C., 12 $\frac{1}{4}$ x 15 $\frac{3}{4}$.



[NUMBER 249]

S. V. E. LEPINE
French 1836-1892

- 254 ON THE BANKS OF THE SEINE
Oil on Canvas, signed, 17½ x 10.

EMMA CIARDI
Italian 1879-1932

- 255 VENICE
Oil on Panel, signed, 14 x 10¼.

J. B. JONGKIND
Dutch 1819-1891

- 256 CANAL A L'OURCQ
Oil on Canvas, signed, dated 1860, 13 x 10.

HENRI MORET
French 1856-1913

- 257 QUIMPER, LE QUAI
Oil on Canvas, 22 x 19.

J. W. MORRICE
Canadian 1865-1924

- 258 LOUISE SEATED
Oil on Canvas, signed, 18¼ x 25½.

J. C. MAGGS
English

- 259 LONDON TO GLOUCESTER COACH
Oil on Canvas, signed, 16 x 8.

J. C. MAGGS
English

- 260 LONDON TO BATH COACH
Oil on Canvas, signed, 16 x 8.



[NUMBER 262]

WILLEM MARIS
Dutch 1884-1910

- 261 **LANDSCAPE, COWS DRINKING**
Water Color, signed, 15 x 9 $\frac{3}{4}$.

JOHANNES BOSBOOM
Dutch 1844-1910

- 262 **HAARLEM CHURCH**
Oil on Panel, signed, 6 x 7 $\frac{1}{2}$.
(Illustrated)

Dutch 1824-1903
J. H. WEISSENBRUCH

- 263 **HARBOUR SCENE, EVENING**
Water Color, signed, 19 $\frac{1}{4}$ x 10 $\frac{1}{2}$.

J. SCHERREWITZ
Dutch (Living Artist)

- 264 MILKING TIME, LANDSCAPE AND COWS
Oil on Canvas, signed, 19½ x 25½.

WALTER GREAVES
English 1846-1930

- 265 OLD BATTERSEA BRIDGE
Oil on Canvas, signed, 19¾ x 11¾.

EUGENE BOUDIN
French 1825-1898

- 266 VIEW OF ROTTERDAM
Oil on Canvas, signed, 23 x 14.

LEON LHERMITTE
French 1844-1925

- 267 THE FIELD OF GRAIN
Pastel, signed, 13¼ x 10.

S. J. LAMORNA BIRCH, R.A.
English (Living Artist)

- 268 UNCLE TOM'S CABIN
Oil on Canvas, signed, 24 x 20.

CECIL LAWSON
English 1851-1882

- 269 WATER MEADOWS, SUNSET
Oil on Canvas, signed, 27 x 24.

SIR D. Y. CAMERON, R.A.
English (Living Artist)

- 270 THE SOUND OF MULL
Oil on Canvas, signed, 17¾ x 10.

W. RUSSELL FLINT, R.A.
English (Living Artist)

- 271 FIELD WORKER'S QUARTERS
Water Color, signed, 26½ x 19½.

X \$300

S. J. LAMORNA BIRCH, R.A.
English (Living Artist)

- 272 CLOUDS OVER THE RIVER
Oil on Canvas, signed, 24 x 20.

SIR D. Y. CAMERON, R.A.
English (Living Artist)

- 273 THE OCHILLS
Water Color, signed, 13 x 4.

C. F. DAUBIGNY
French 1818-1878

- 274 ON THE OISE
Oil on Panel, signed, 16¾ x 8¾.

SIR JOHN LAVERY, R.A.
English (Living Artist)

- 275 FRENCH GUNBOATS, TANGIER BAY
Oil on Canvas, signed, 44 x 33.

KAREL KLINKENBERG
Dutch 1852-

- 276 DORDRECHT
Oil on Panel, signed, 5¼ x 7¼.

G. LOISEAU
French 1865-1928

- 277 L'AVANT PORT DE DIEPPE
Oil on Canvas, signed, 21½ x 18.

J. W. MORRICE
Canadian 1865-1924

- 278 ALGERIAN GIRL
Oil on Panel, unsigned, 9¼ x 13.

M. CULLEN
Canadian 1861-1934

- 279 LANDSCAPE, WINTER
Oil on Canvas, signed, dated '96, 24 x 19¾.

J. W. MORRICE
Canadian 1865-1924

- 280 THE REGATTA AT CANCALE
Oil on Canvas, signed, 24 x 20.
(Illustrated)

ANTONIA CASANOVA Y ESTORACH
Spanish, 19th Century

- 281 ON THE TERRACE
Oil on Canvas, signed, 12½ x 15.

SIR D. Y. CAMERON, R.A.
English (Living Artist)

- 282 KINLOCH HILLS
Water Color, signed, 14½ x 5½.

SIR D. Y. CAMERON, R.A.
English (Living Artist)

- X 283 LOCH ARIENAS
Water Color, signed, 12¼ x 9.

\$100

S. VAN ABBE
English (Living Artist)

- 284 THE GOSSIP PAGE
Water Color, signed, 10¼ x 10¼.



[NUMBER 280]

W. RUSSELL FLINT, R.A.
English (Living Artist)

- 285 A YOUNG IBERIAN
Water Color, signed, 24 x 13.

E. HANDLEY-REID
English (Living Artist)

- 286 SIGNED WATER COLOR DRAWINGS OF THE
GREAT WAR:
Cambrai, Hotel de Ville. 18 x 11½.
Looking Down on Albert. 18 x 11½.
Albert. 12 x 18.
Mametz. 18 x 11½.
Poperinghe, Grand Place. 18 x 11½.
Tank in High Wood, Somme. 17¾ x 11¼.
Ablain St. Nazaire. 18 x 11¼.
Albert 1916. 18 x 12.
Delville Wood, September 1916. 18 x 11¼.

WALTER GREAVES
English 1846-1930

- 287 EARLY MORNING ON THE THAMES
Oil on Canvas, signed, 25 x 21.

S. J. LAMORNA BIRCH, R.A.
English (Living Artist)

- 288 MAY DAY ON THE DEVERON
Oil on Canvas, signed, 20 x 24.

ALEXANDRE BERCOVITCH
Canadian (Living Artist)

- 289 SUNNY DAY, GASPE COAST
Oil on Canvas, signed, 28½ x 22¼.

LEON LHERMITTE
French 1844-1925

- 290 PURSE EN MARNE
Pastel, signed, 16½ x 11½.

J. W. MORRICE
Canadian 1865-1924

- 291 TANGIERS
Oil on Canvas, signed, 21½ x 26.

WILLEM MARIS
Dutch 1844-1910

- 292 COWS IN LANDSCAPE
Oil on Canvas, signed, 11¼ x 8½.

BERNARD DE HOOG
Dutch (Living Artist)

- 293 PEELING POTATOES
Oil on Canvas, signed, 20 x 16.

J. W. MORRICE
Canadian 1865-1924

- 294 LANDSCAPE AND BUILDINGS
Oil on Panel, signed, 16 x 12.

F. P. TER MEULEN
Dutch 1843-1927

- 295 RETURN OF THE FLOCK
Oil on Canvas, signed, 35 x 32.

CORNELIUS KRIEGHOFF
Canadian 1812-1872

- 296 INDIANS AROUND CAMPFIRE, MOONLIGHT
Oil on Canvas, unsigned, 30 x 21½.
(Illustrated)



[NUMBER 296]

A. LISMER
Canadian (Living Artist)

- 297 PINES AT SUNSET, MACGREGOR BAY
Oil on Panel, signed, 16 x 12.

J. W. MORRICE
Canadian 1865-1924

- X 298 LANDSCAPE AND CATTLE, LE POLDU
Oil on Panel, unsigned, 13 x 9¼.

\$75

S. VAN ABBE
English (Living Artist)

- 299 FISHWIFE, BIARRITZ
Water Color, signed, 10¼ x 10¼.

JACOB KEVER
Dutch 1854-

- 300 INTERIOR, MINDING BABY
Oil on Canvas, signed, 26 x 20.

J. W. MORRICE
Canadian 1865-1924

- 301 WOMAN IN BROWN
Oil on Canvas, unsigned, 14 x 18¼.

ALEXANDRE BERCOVITCH
Canadian (Living Artist)

- 302 IN THE WOODS, AUTUMN
Gouache, signed, dated 1936, 22 x 20.

CORNELIUS KRIEGHOFF
Canadian 1812-1872

- 303 ST. HENRY'S FALLS, ETCHEMIN RIVER,
NEAR QUEBEC
Oil on Canvas, signed, dated 1858, 21 x 14¼.

ALEXANDRE BERCOVITCH
Canadian (Living Artist)

- 304 TREES, AUTUMN
Gouache, signed, 22½ x 20½.

J. Y. JOHNSTONE
Canadian 1887-1930

- 305 VOLENDAM
Oil on Panel, signed, 16 x 12.

A. LISMER
Canadian (Living Artist)

- 306 LITTLE MOUNTAIN LAKE, ONTARIO
Oil on Panel, signed, 16 x 12.

LAURA MUNTZ
Canadian 1860-1930

- 307 YOUNG GIRL WITH GOLDEN CURLS
Oil on Canvas, painted oval, signed, 15½ x 19½.

NORWICH SCHOOL

- 308 LANDSCAPE
Oil on Canvas, unsigned, 20½ x 15½.

A. MACDONALD
Canadian (Living Artist)

- 309 STILL LIFE
Water Color, signed, 13¾ x 17¾.

R. C. CRAWFORD
Scotch

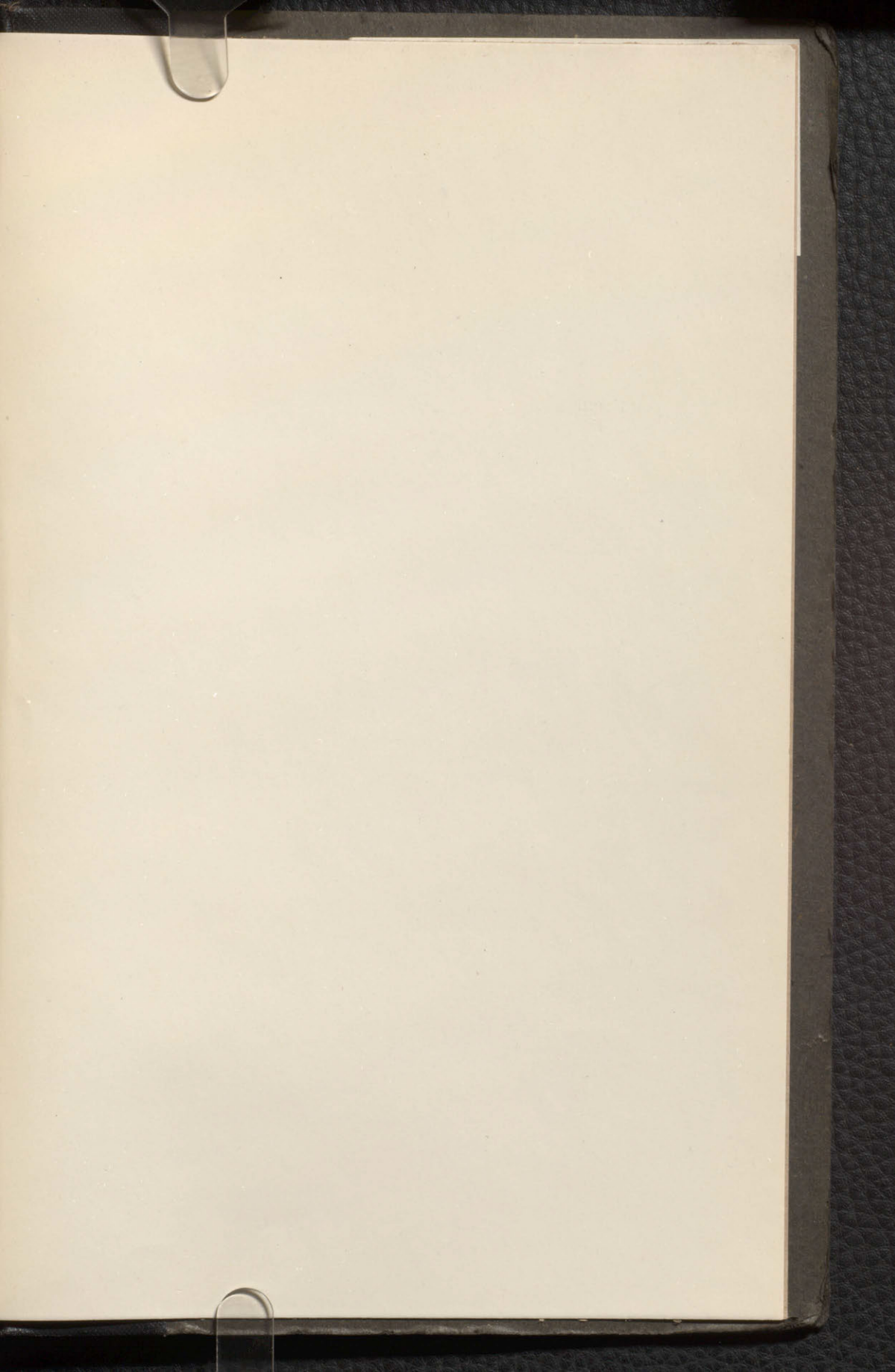
- 310 COUNTRY ROAD IN SUAN
Oil on Canvas, unsigned, 12 x 18.

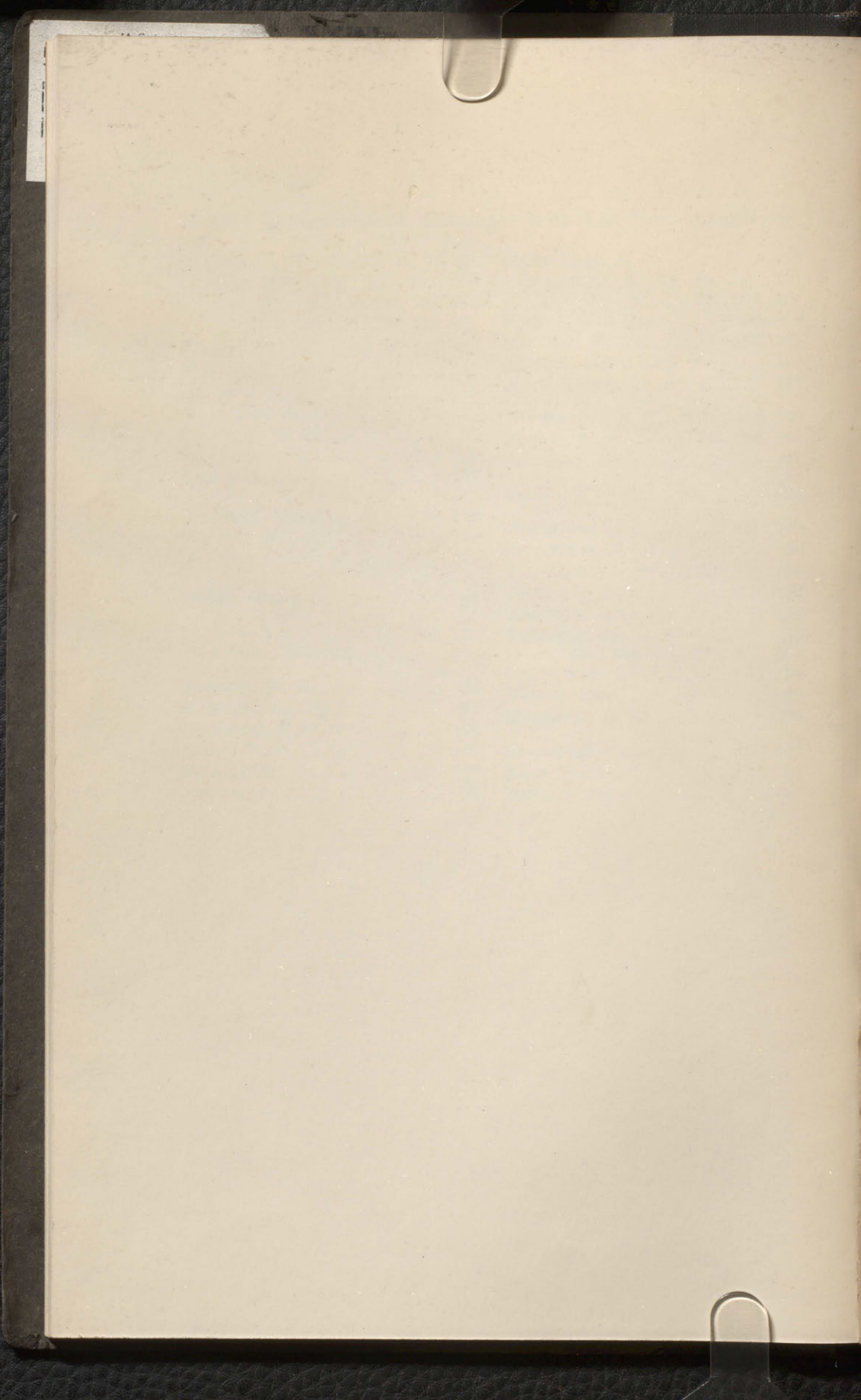
Artists Represented in Catalogue with Lot Nos.

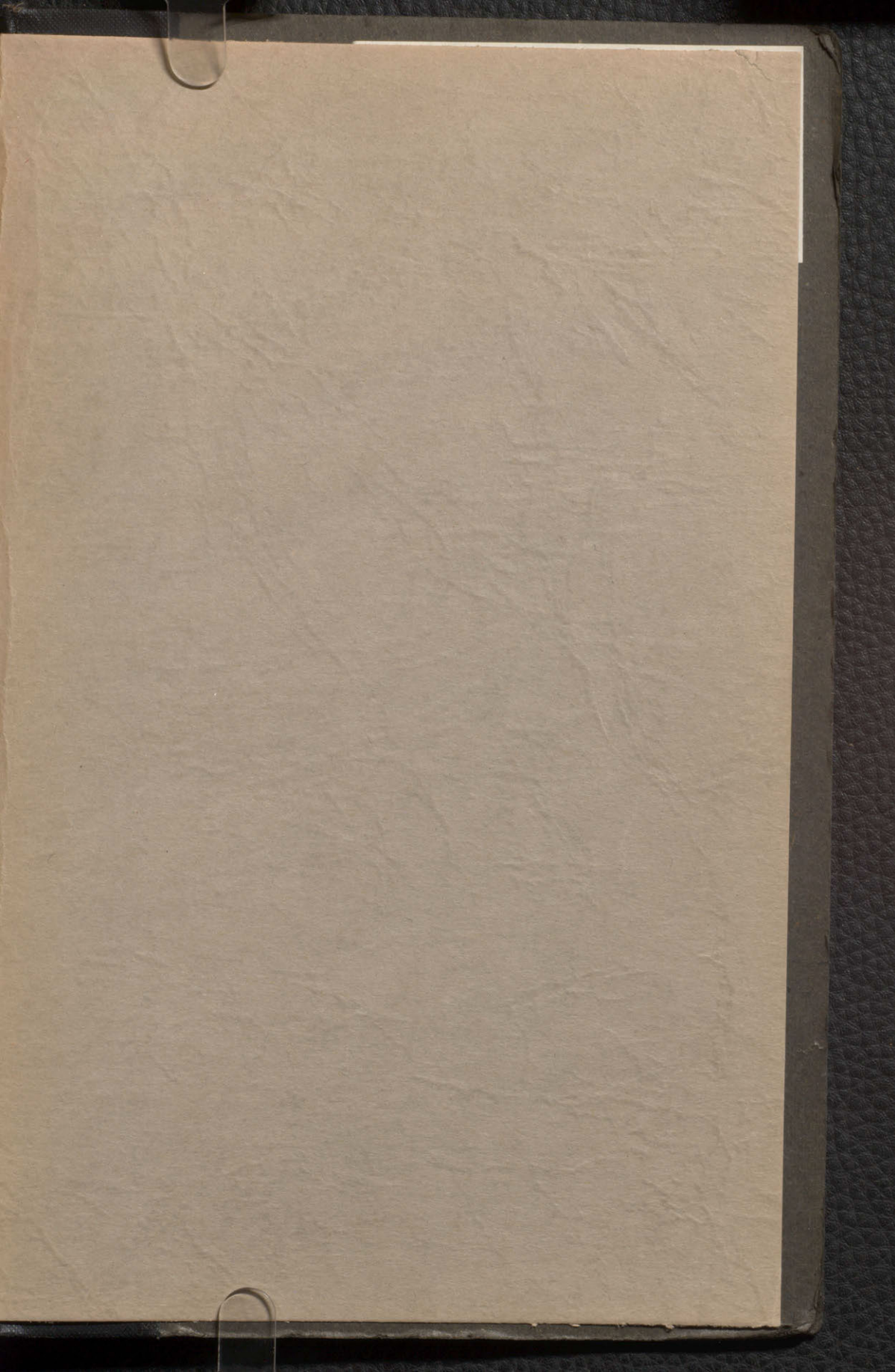
Bosboom, Johannes	262	Hurt, Louis B.	205
Bonnington, R. P.	193	Hulk, John Fr.	123
Blommers, B. J.	189, 203	Harpignies, Henri	41, 140, 156
Birch, S. J. Lamorna	178, 268 272, 288	Henner, J. J.	68, 185
Bonvin, Francois	167	Hutchison, F. W.	127
Borenstein, S.	92, 214, 237	Hammond, John	128
Barnes, Arch.	82, 177	Heffner, Karl	245
Bercovitch, Alex.	73, 83, 91, 132 182, 197, 235, 289, 302, 304	Handley-Reid, E.	286
Bauer, M. A. J.	56	Israels, Jos.	37, 47
Brangwyn, Frank	54, 81	Jansen, W. G. F.	232
Boudin, Eugene	266	Johnstone, J. Y.	24, 25, 96, 124, 125, 211, 238, 239, 305
Cazin, M.	253	Jurres, J. H.	32, 94, 173
Ciardi, Emma	93, 200, 255	Jacque, C. E.	52
Cullen, M.	72, 183, 196, 279	Jackson, A. Y.	201
Cursiter, S.	36	Jongkind, J.	250
Crawford, R. C.	23, 208, 234, 310	Krieghoff, Cornelius	44, 70, 142 179, 180, 251, 296, 303
Clausen, Sir George	35, 240	Kane, Paul	71
Cameron, Sir D. Y.	55, 151, 270 273, 282, 283	Klotz, D.	89
Choultse, Ivan F.	147	Klinkenberg, K.	175, 276
de Bock, Th.	29, 135, 144, 243	Kever, Jacob	300
Des Fontaine, A.	22	Lismer, A.	297, 306
de Hoog, B.	33, 74, 194, 204, 293	Lawson, Cecil	269
Dufy, Raoul	85a, 86a, 87a	Lepine, S. V. E.	165, 254
Daubigny, C. F.	50, 274	Lambinet, E. C.	40
Dawson, Montagu	202	Lavery, Sir John	20, 57, 250, 275
Estorach, Antoine Casanova J.	281	Lhermitte, Leon	61, 267, 290
Flint, W. Russell	80 63	Ligtelyn, E.	75
Fanner, Alice	149	Loiseau, G.	85, 160, 163, 277
Foweraker, A. N.	150	Maris, Willem	148, 155, 157, 246 261, 292
Fantin-Latour, H.	53	Maris, James	137, 174, 213, 249
Gorter, A. M.	134, 233	Moret, Henri	87, 90, 257
Greaves, Walter	265, 287	Maufra, M. L. E.	86, 161

Artists Represented in Catalogue with Lot Nos.—Continued.

Morrice, J. W.	26, 38, 45, 46, 66, 67, 78, 84, 152, 153, 159, 164 166, 184, 186, 195, 247, 248, 258 278, 280, 291, 294, 298, 301	Suzor-Cote, A.	27
Maggs, J. C.	59, 60, 259, 260	Scherrewitz, J.	43, 95, 133, 171 242, 252, 264
Muhrman, Henry H.	212	Shayer, Wm. Sr.	65, 199
Millet, J. F.	42	Steelink, Willem	126, 244
Monticelli, A. J. T.	76, 179	Sidaner, Henri Le	162
Maxwell, W. S.	97	Starr, Sidney	187
MacDonald, A.	210, 309	Ter Meulen, F. P.	39, 79, 146, 295
Muntz, Laura	307	Tholen, W. B.	139, 170, 176
Neuhuys, Albert	30, 172	Talmage, Algernon	188
Norwell, G.	130, 131	Utrillo, M.	88
Norwich School	308	Van Abbe, S.	284, 289
Oeder, Georg.	49	Van Essen, J.	19
Palardy, J.	181, 209, 236	Van Mastenbroek, J. H.	145, 215
Priestman, Bertram	191	Verner, F. A.	129
Robbins, W. D.	34	Voerman, Jan	31, 141
Raeburn, Sir Hy.	77	Weissenbruck, J. H.	21, 28, 136 138, 154, 158, 231, 241, 263
Rousseau, E. P. T.	168	Weiss, Jose	48, 190
Ribot, Theo.	192	Wright, Geo.	58
Renaud, E.	207	Wimperis, E. M.	206
Roybet, F.	62	Zimmerman	18, 122
		Ziem, Felix	51
		Zoffany, John	64







1880

N8650 F84 1938 Blackdr
Scott (W.) & Sons, Montreal.
Three hundred distinctive
and valuable oil paintings &
WP/S43 71294126

McGill University Library



3 102 994 551 M