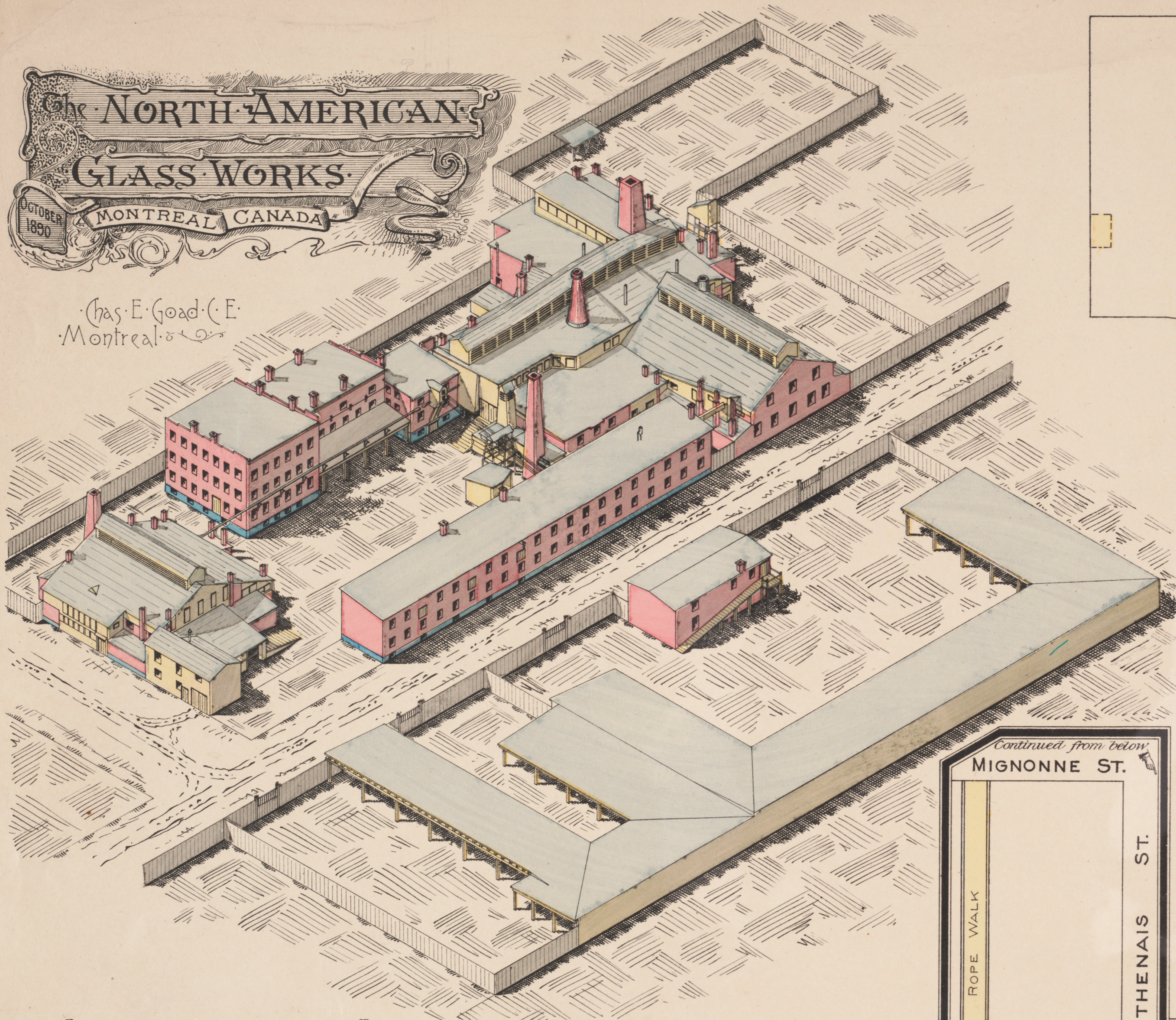


The NORTH-AMERICAN GLASS WORKS MONTREAL CANADA

Chas. E. Goad, C. E.
Montreal.



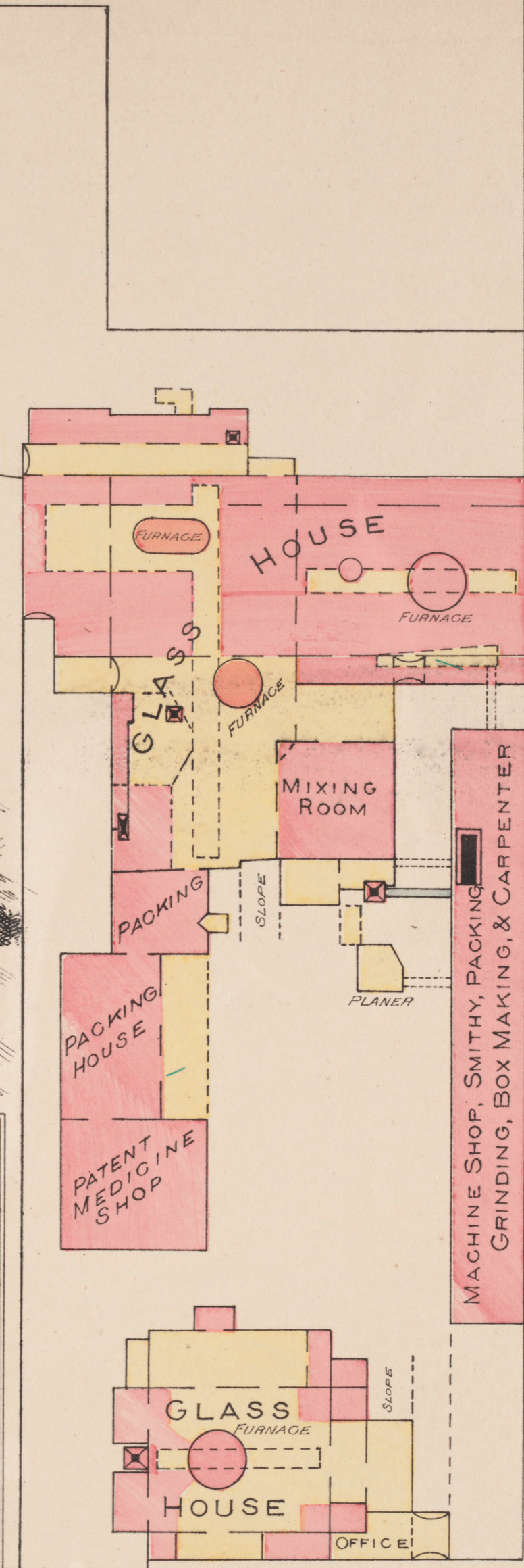
KEY	
BRICK BUILDINGS ARE	
STONE	
WOODEN	

SCALE 50 FEET = 1 INCH

N.B. This being an Isometric Projection and to same Scale as Plan, Vertical Dimensions can be scaled from it.

Continued from below
MIGNONNE ST.
ROPE WALK
PARTHENAIS ST.
ST. CATHERINE ST.

this part to Scale of 100 ft. to 1 Inch



MIGNONNE STREET

Continued above to Scale of 100 ft. to 1 Inch

PARTHENAIS STREET

