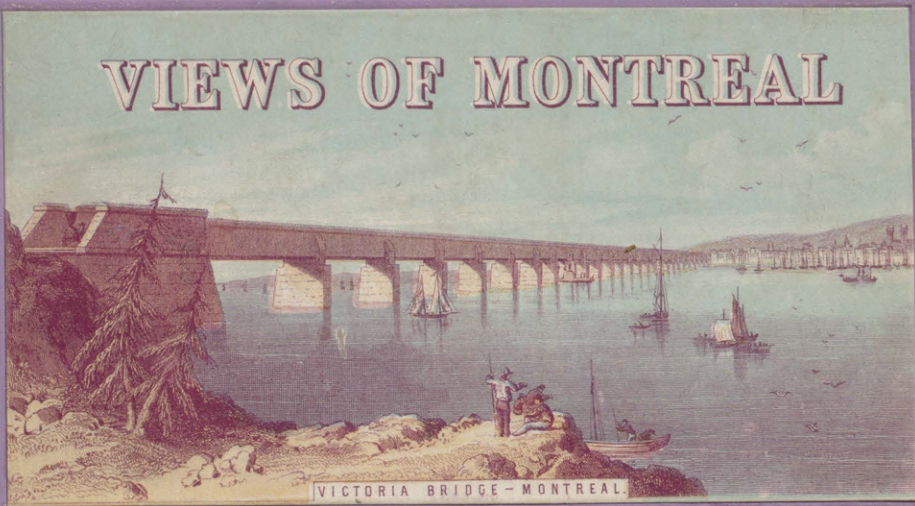


NELSON'S VIEW-BOOKS FOR TOURISTS

# VIEWS OF MONTREAL



VICTORIA BRIDGE - MONTREAL

T. NELSON & SONS, LONDON & EDINBURGH

40-

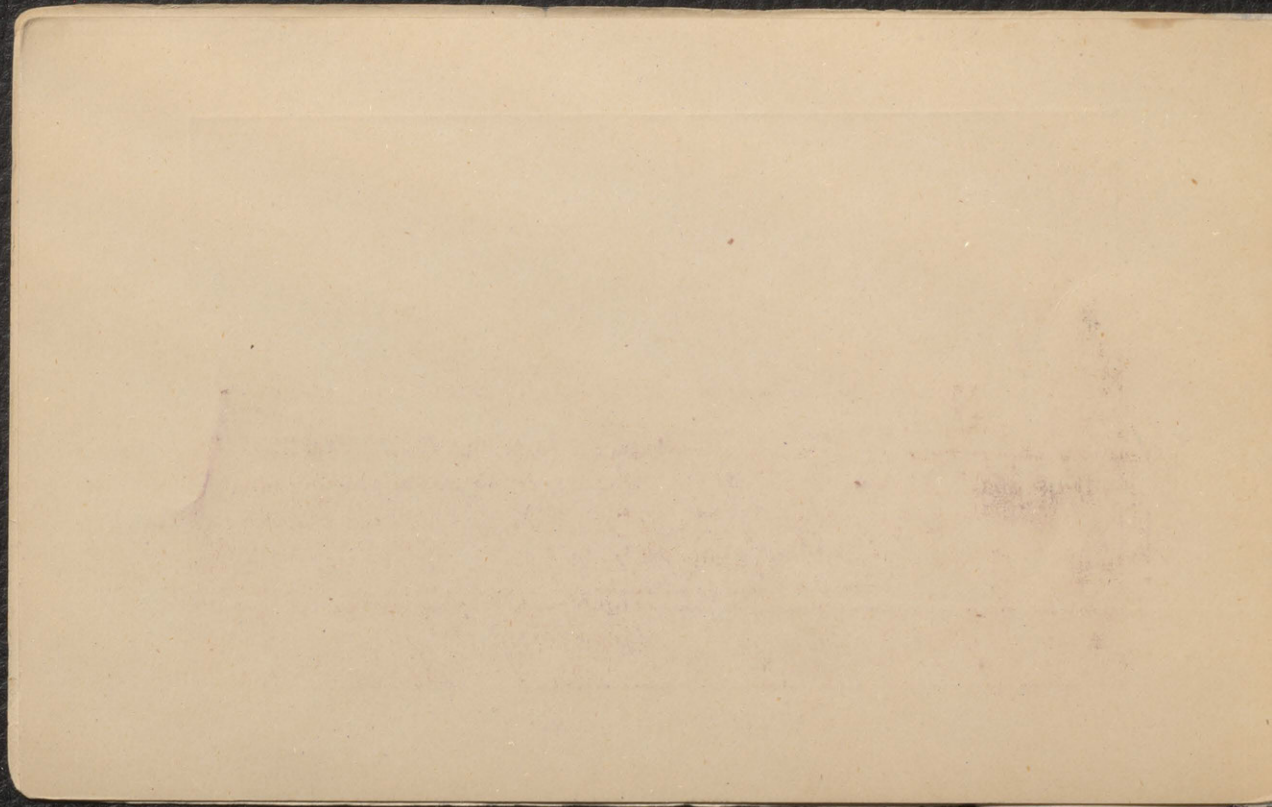
WILSON'S VIEW-CARDS FOR TOURISTS

L. NELSON & SONS, LONDON & EDINBURGH



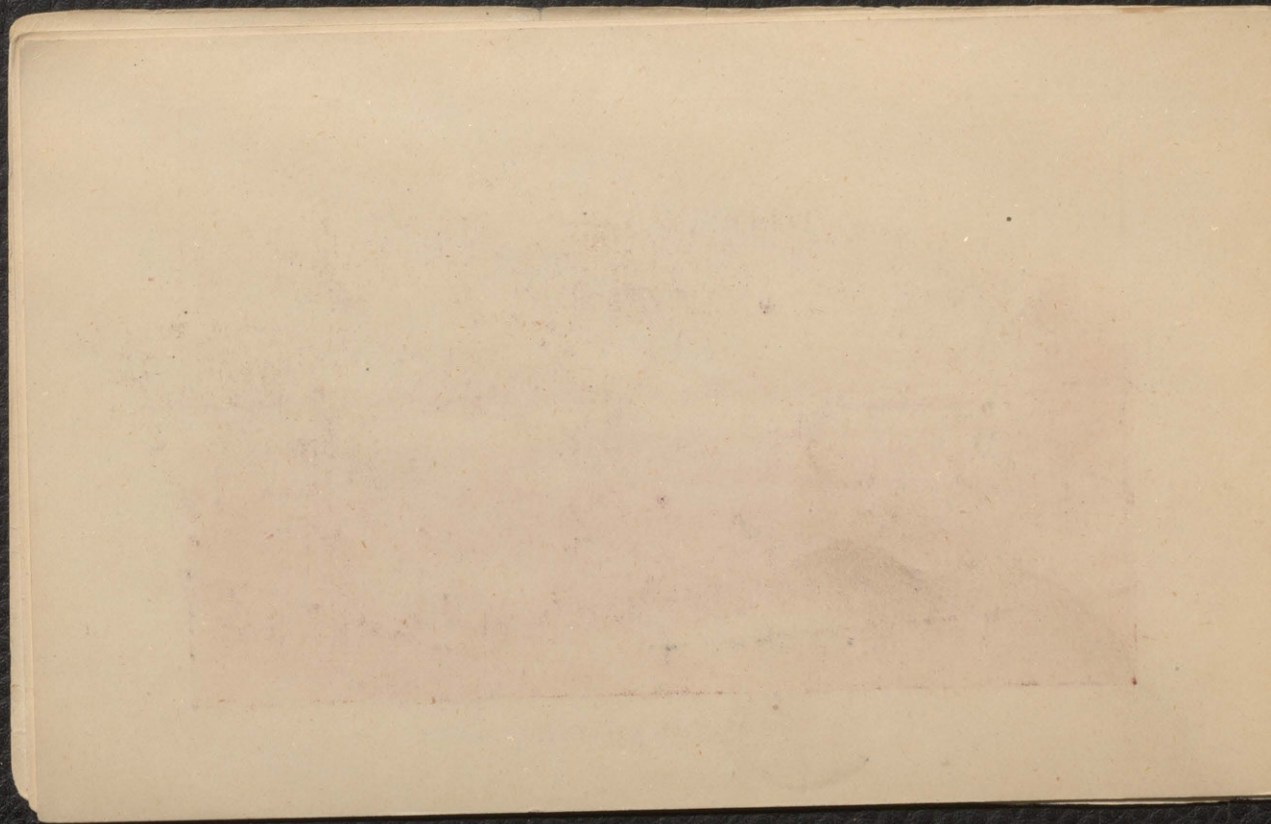
MONTREAL FROM THE MOUNTAIN.

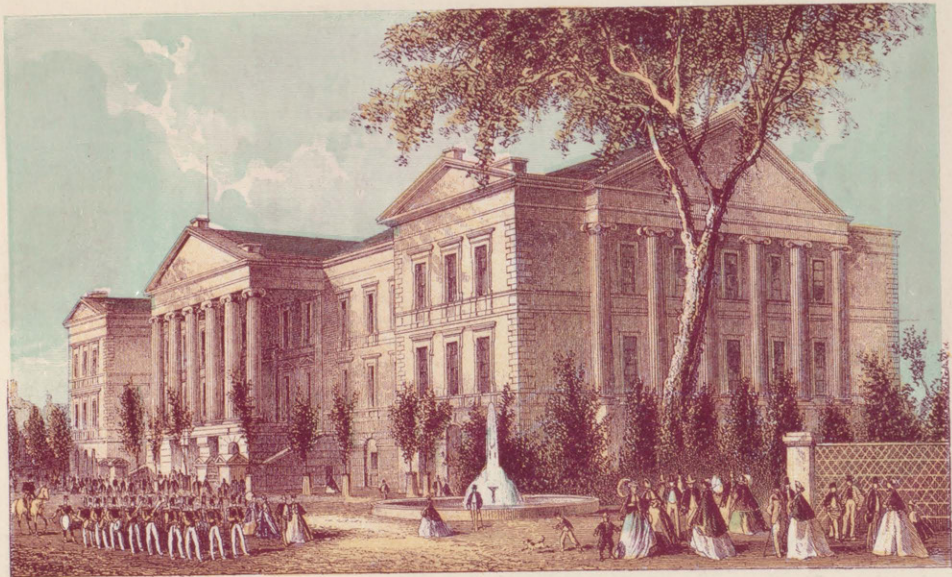
1 St. Helen's Island. 2 Court House & Bousecour's Market. 3 Cathedral of Notre-Dame. 4 Victoria Bridge.



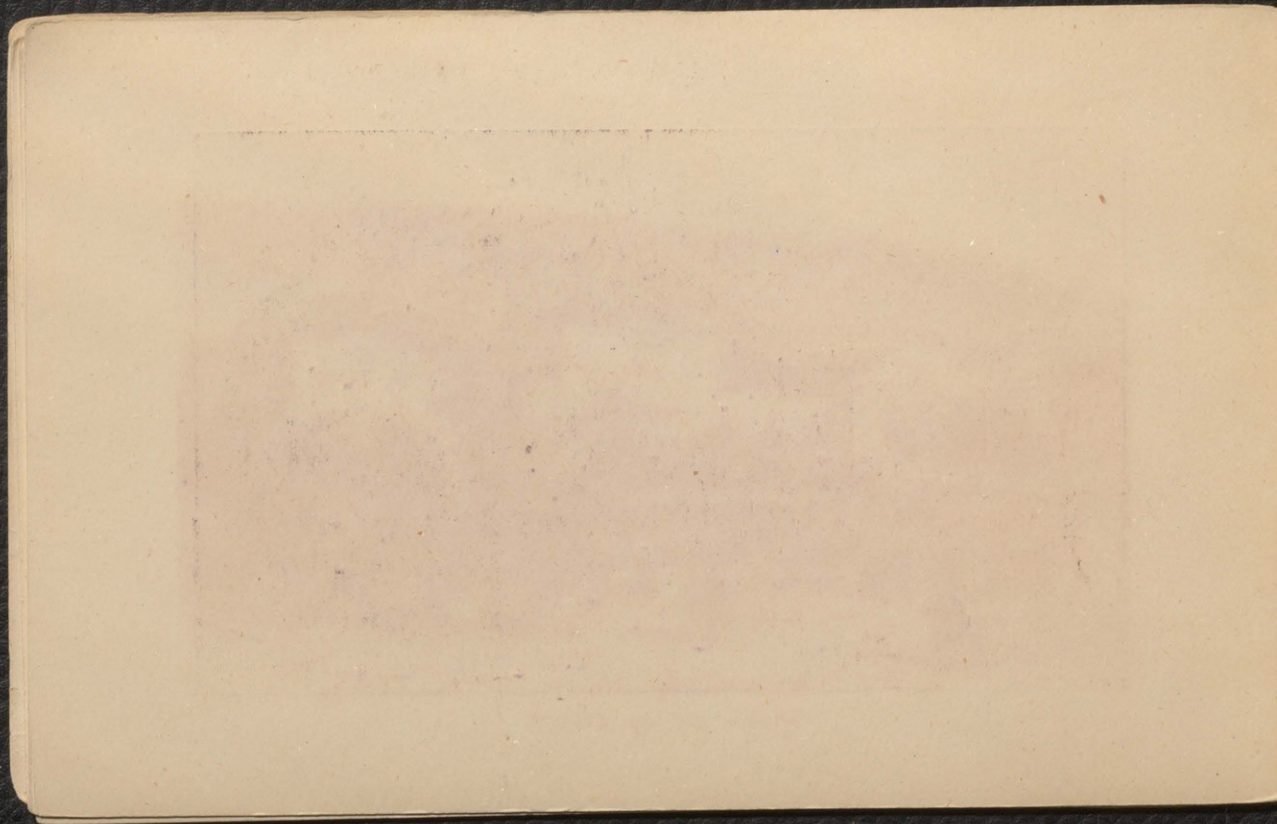


MCCILL COLLEGE, MONTREAL.

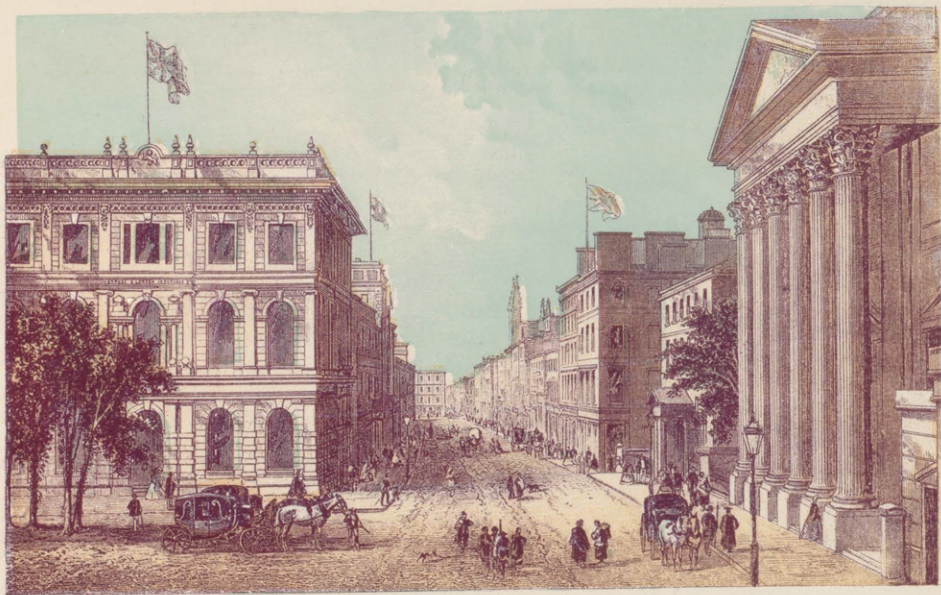




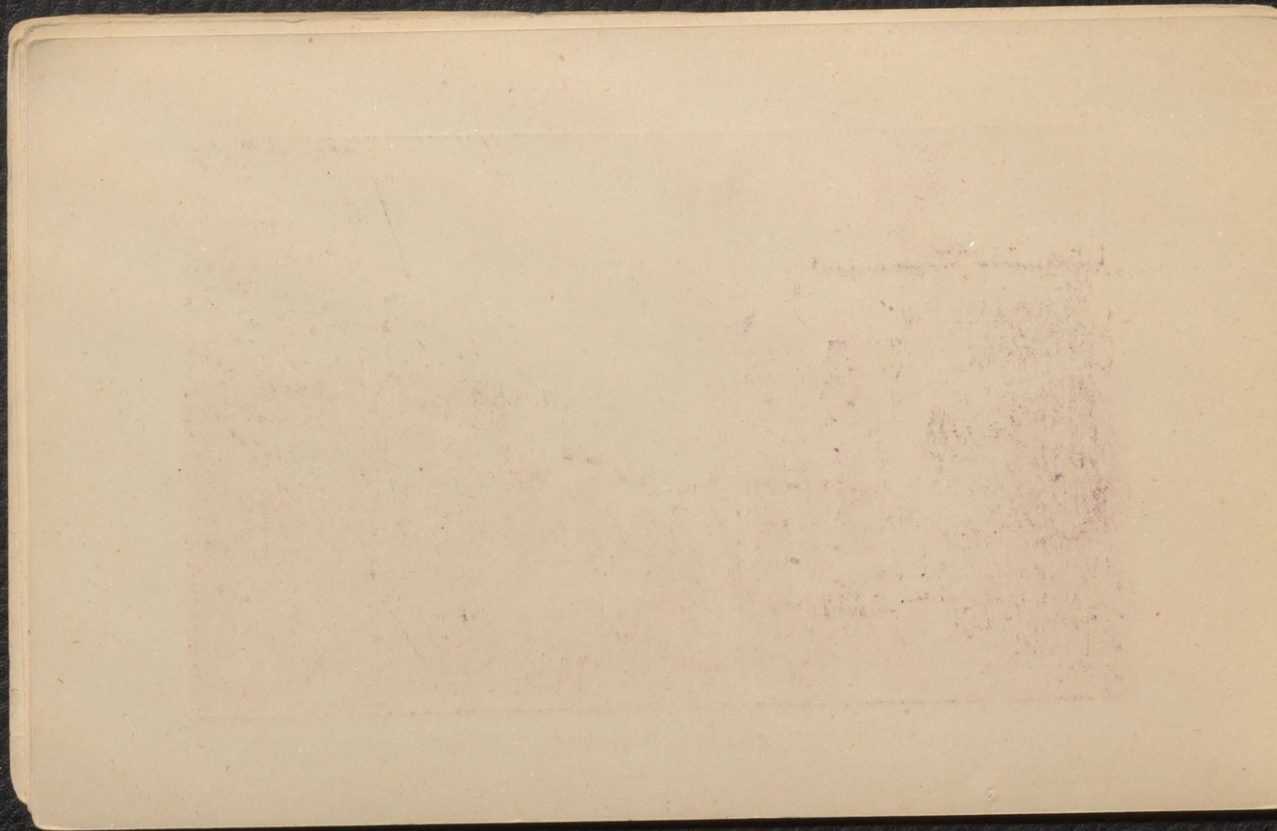
COURT HOUSE, MONTREAL.





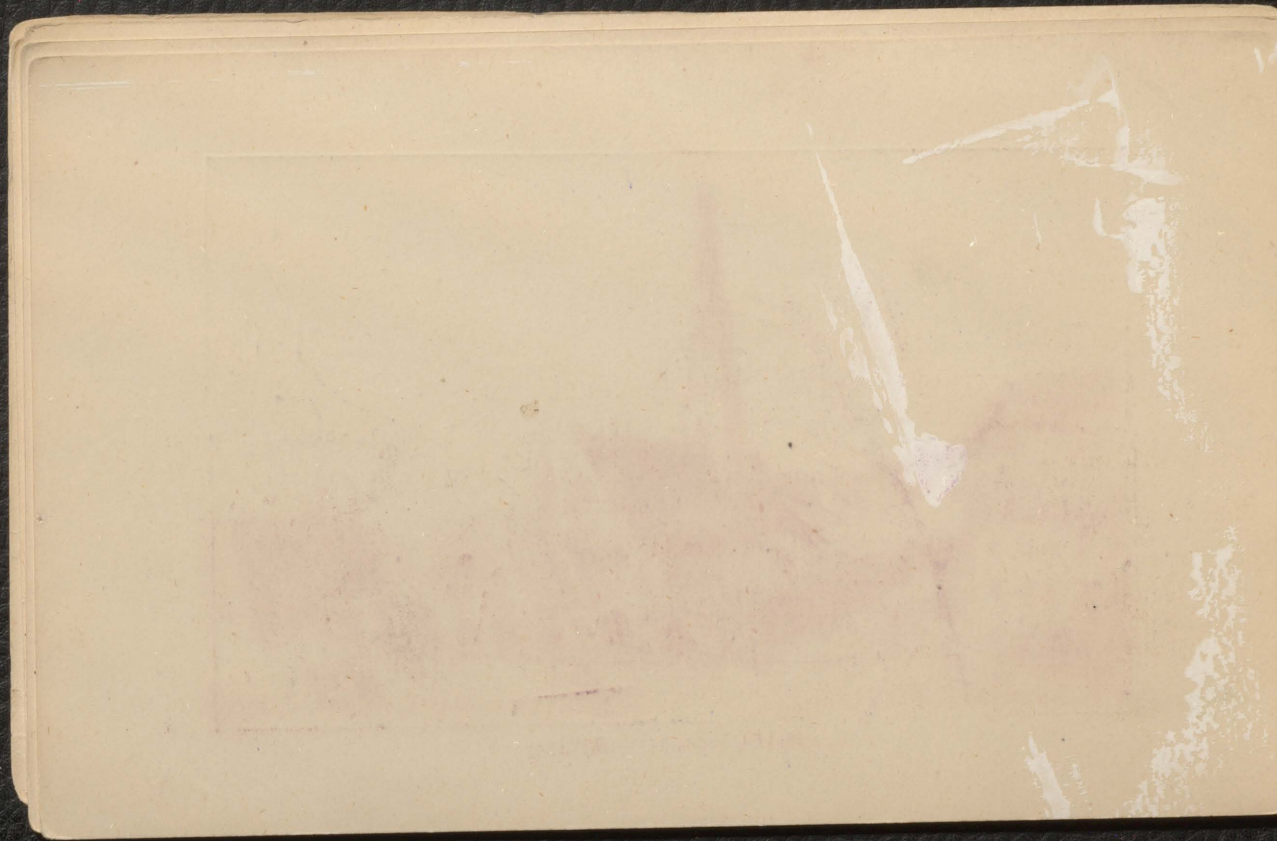


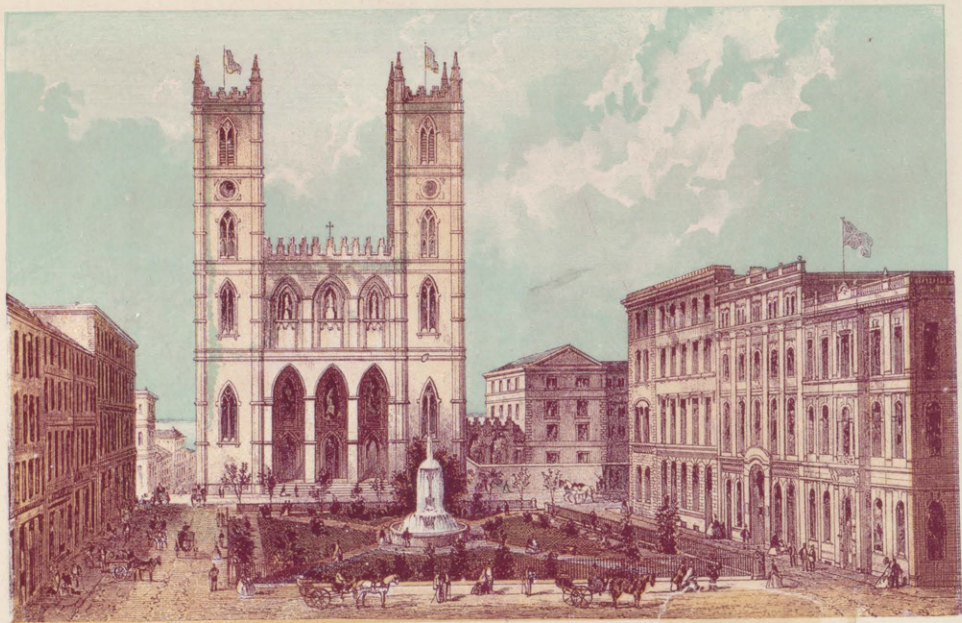
GREAT ST. JAMES' STREET, FROM PLACE D'ARMES, MONTREAL.



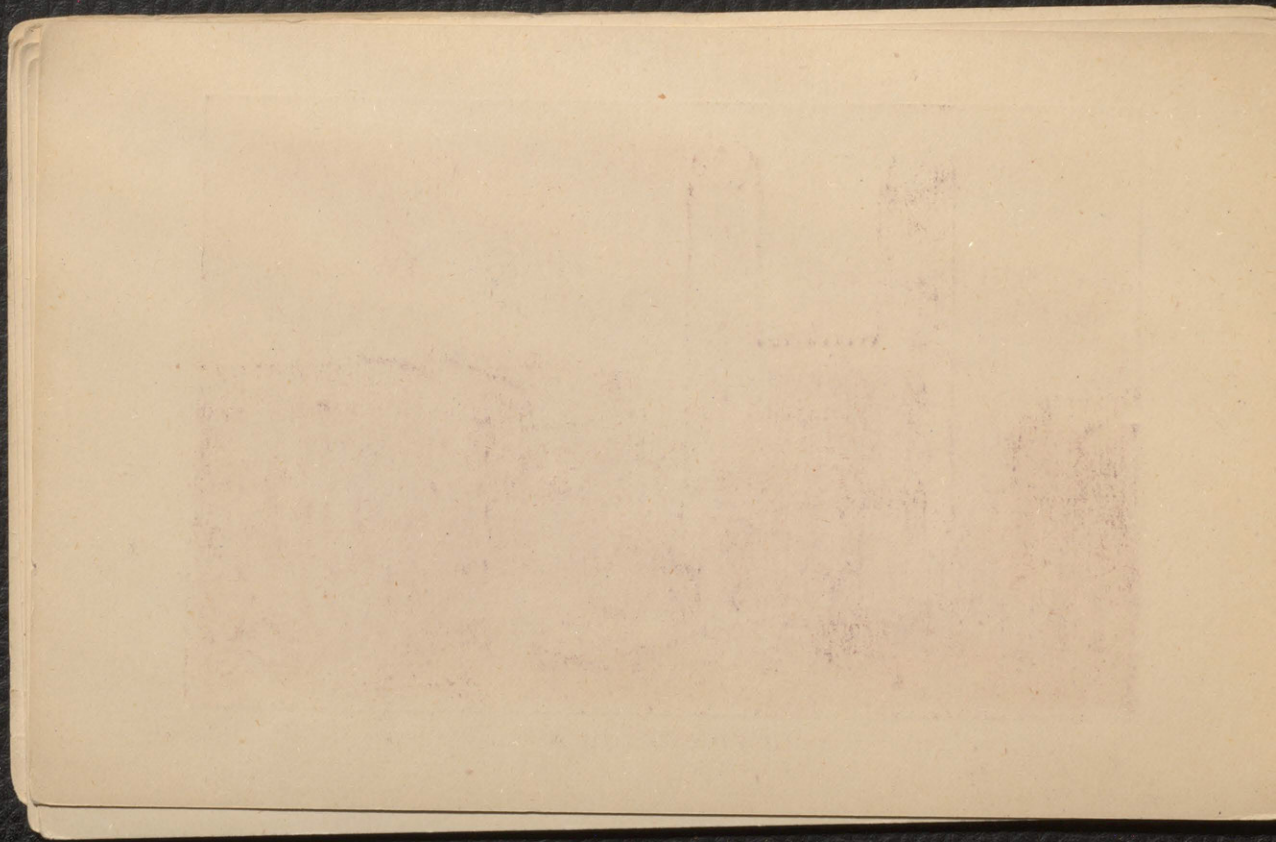


VICTORIA SQUARE, MONTREAL.



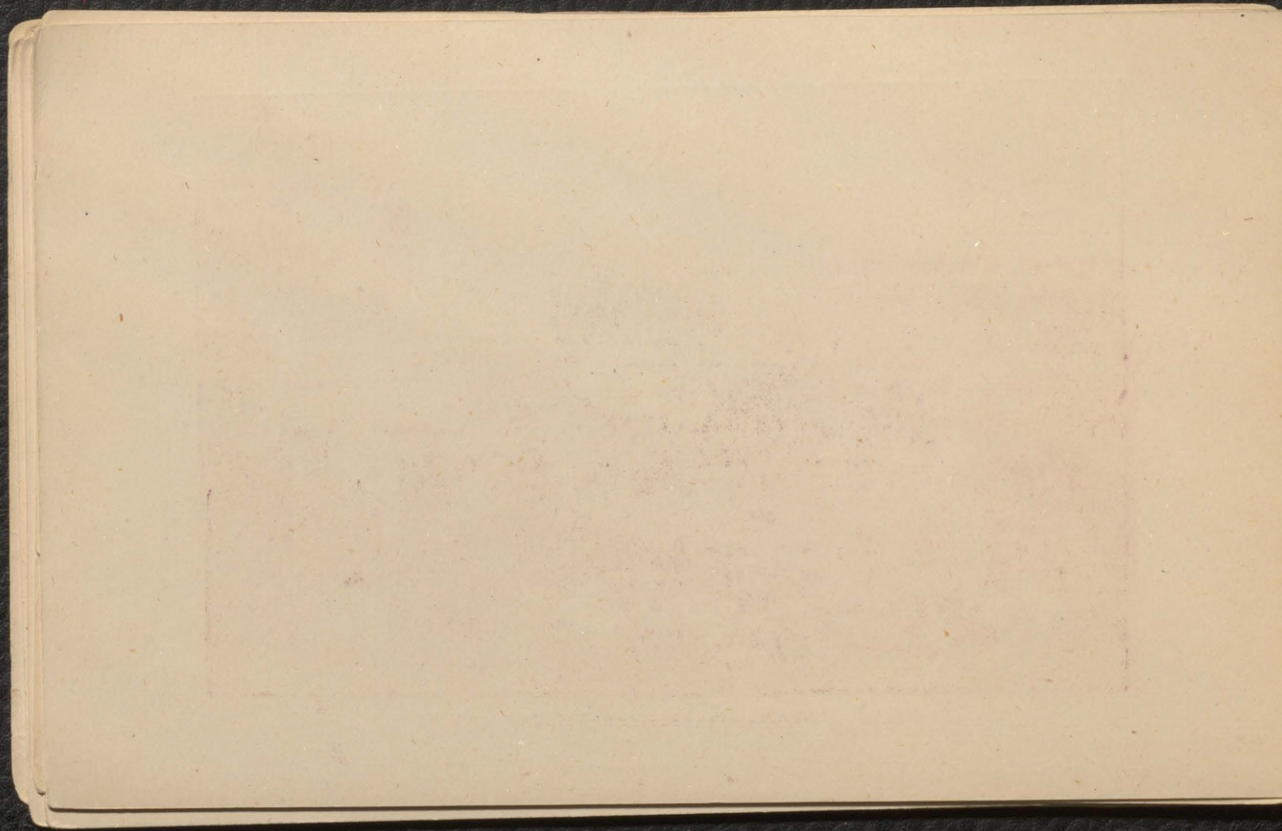


PLACE D'ARMES, MONTREAL.





ENGLISH CATHEDRAL, MONTREAL.

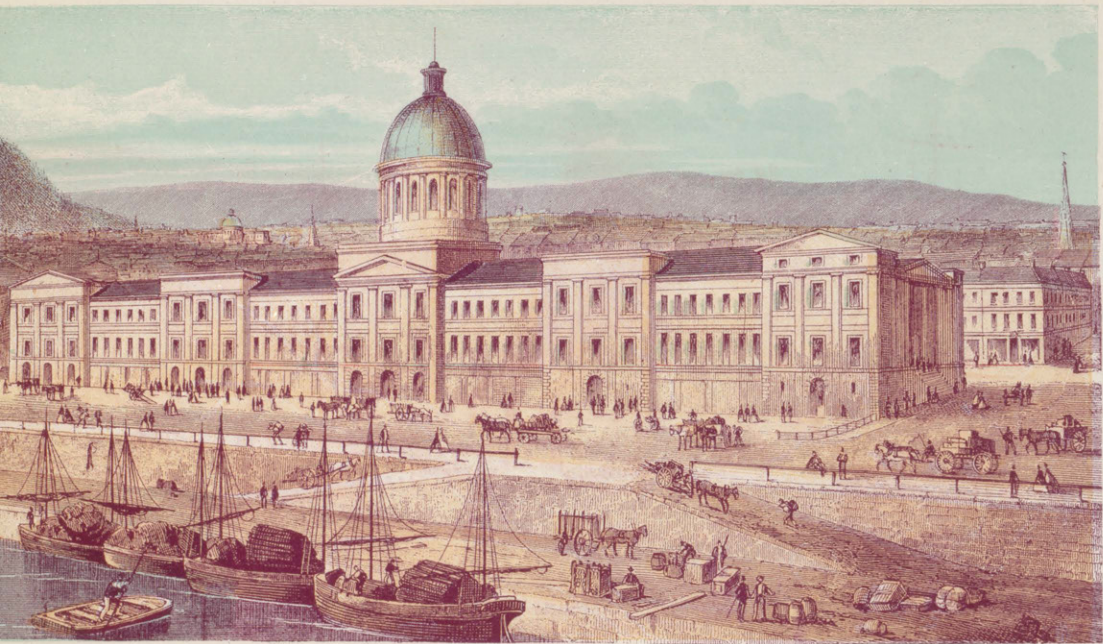




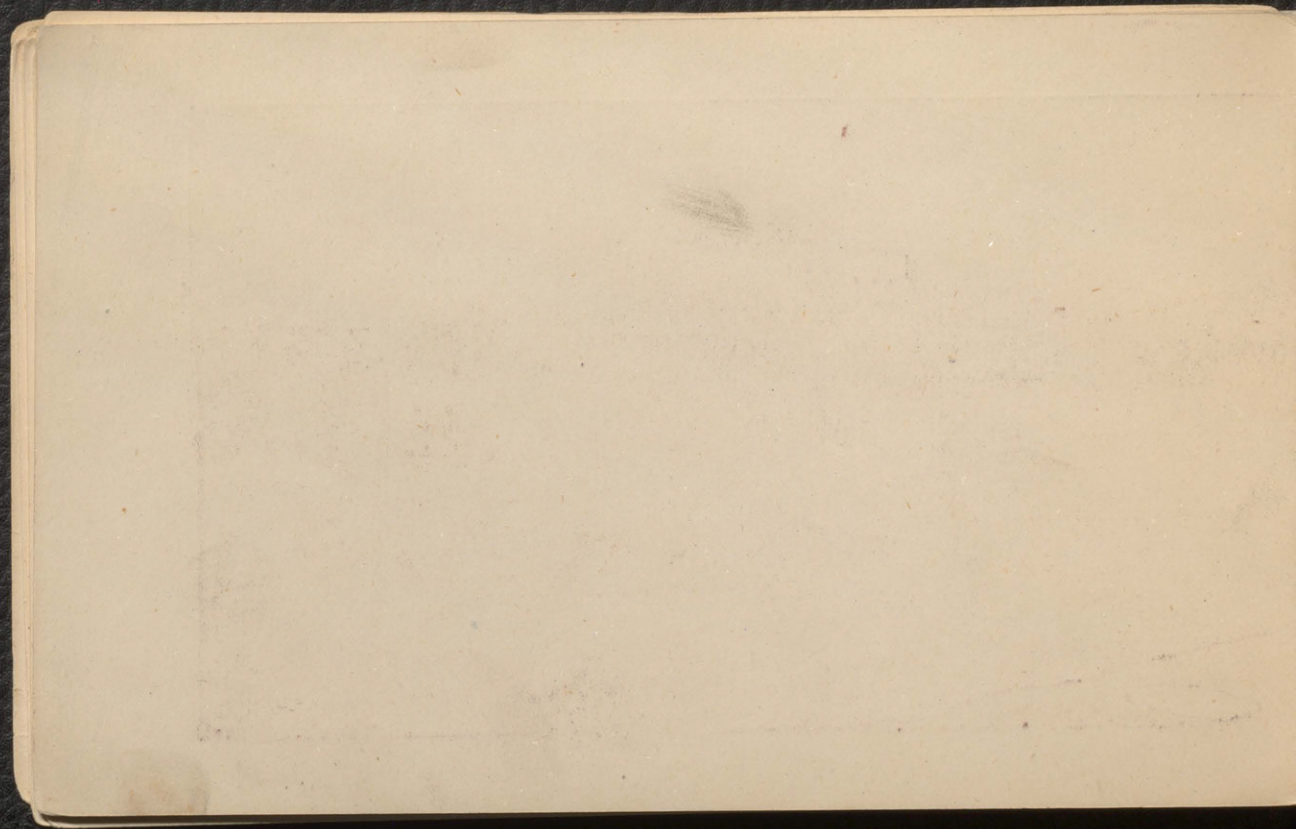


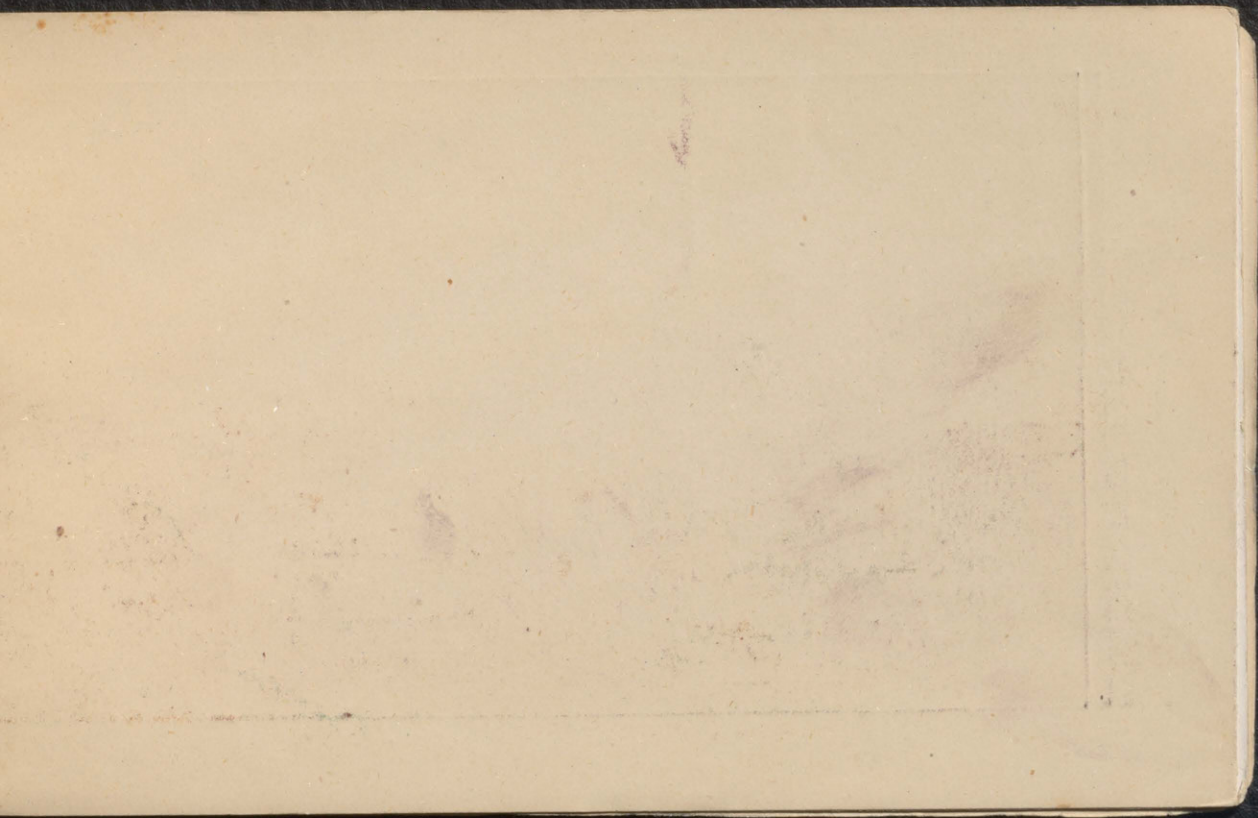


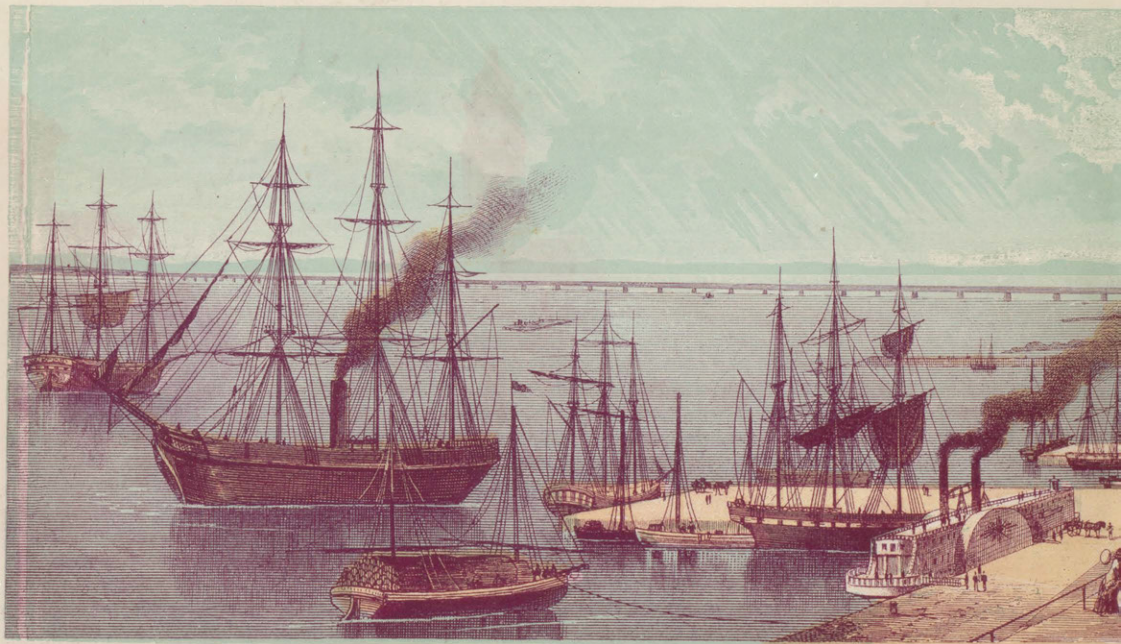
HARBOUR



MONTREAL.



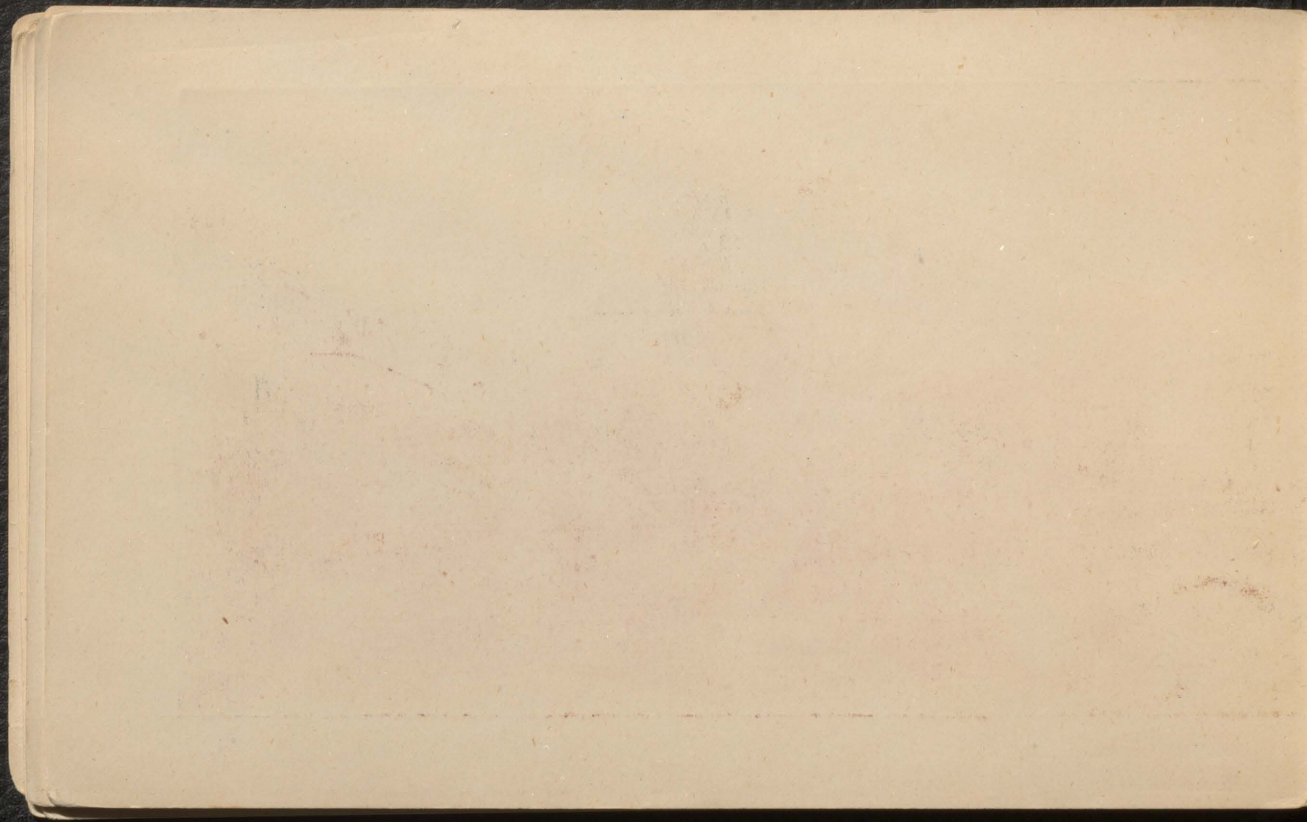




HARBOUR OF MONT



AL, LOOKING WEST.





#163925923

